



Pioneer Energy Services

Microresistivity Log

Company TDI, Inc.
Well Marsha #1
Field Schoenchen West
County Ellis **State** Kansas

Location 330' FSL & 850' FWL
Sec: 21 **Twp:** 15 S **Rge:** 18 W
Other Services CNL/CDL DIL

API No. 15-051-26559-00-00
Permanent Datum Ground Level **Elevation** 1950
Log Measured From Kelly Bushing **10 Ft. Above Perm. Datum**
Drilling Measured From Kelly Bushing

Date	08-26-2013		
Run Number	Two		
Depth Driller	3695		
Depth Logger	3693		
Bottom Logged Interval	3692		
Top Log Interval	2800		
Casing Driller	8.625 @ 1135		
Casing Logger	1131		
Bit Size	7.875		
Type Fluid in Hole	Chemical		
Salinity, ppm CL	3500		
Density / Viscosity	9.2 59		
pH / Fluid Loss	10.5 7.6		
Source of Sample	Flowline		
Rm @ Meas. Temp	0.60 @ 86		
Rmf @ Meas. Temp	0.45 @ 86		
Rmc @ Meas. Temp	0.81 @ 86		
Source of Rmf / Rmc	Charts		
Rm @ BHT	0.45 @ 115		
Operating Rig Time	3 Hours		
Max Rec. Temp. F	115		
Equipment Number	91		
Location	Hays		
Recorded By	D. Schmidt		
Witnessed By	Tom Denning	Herb Deines	

<<< Fold Here >>>

All interpretations are opinions based on inferences from electrical or other measurements and we cannot and do not guarantee the accuracy or correctness of any interpretation, and we shall not, except in the case of gross or willful negligence on our part, be liable or responsible for any loss, costs, damages, or expenses incurred or sustained by anyone resulting from any interpretation made by any of our officers, agents or employees. These interpretations are also subject to our general terms and conditions set out in our current Price Schedule.

Comments

Thank you for using Log-Tech, Inc.
 (785) 625-3858

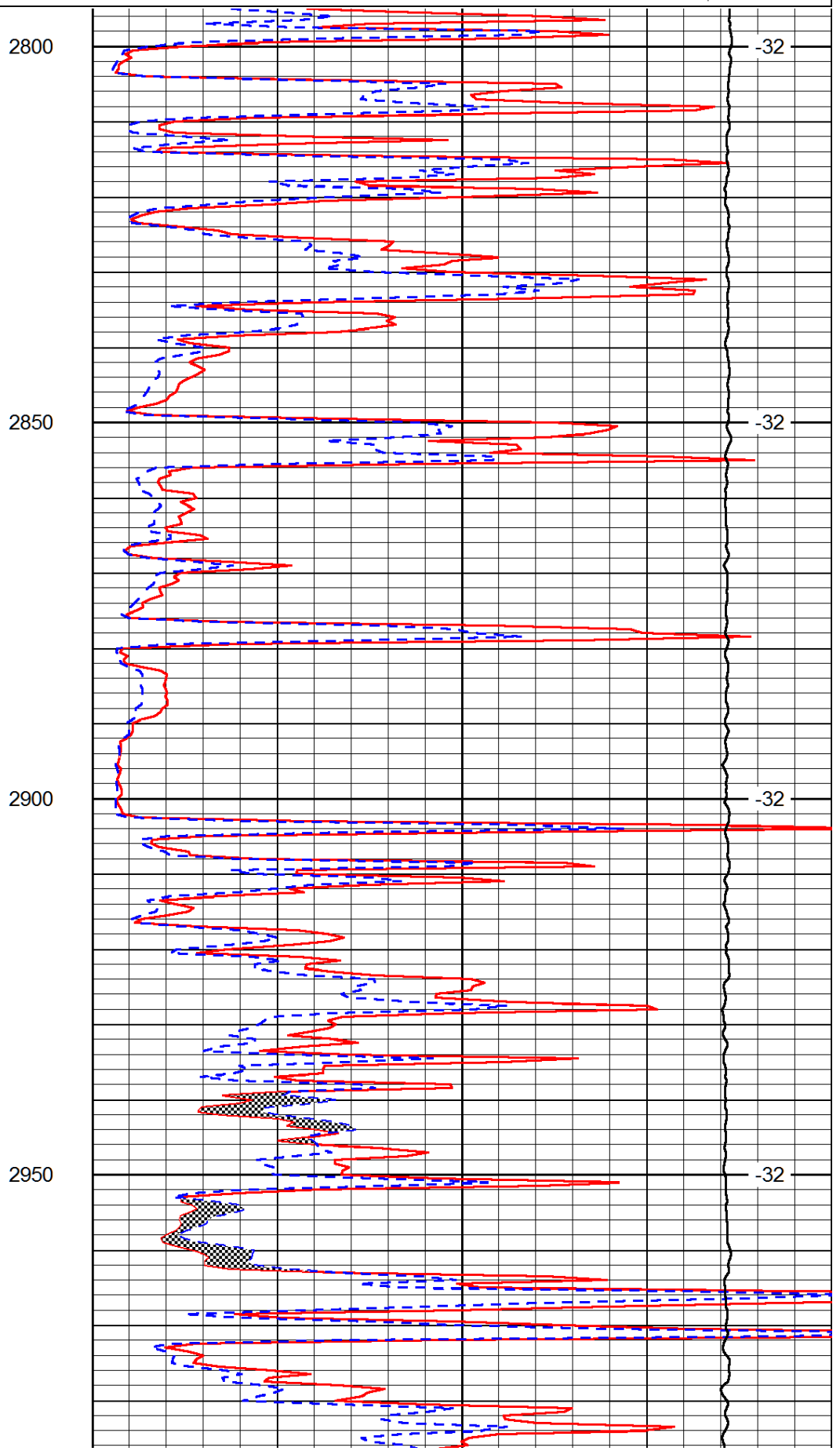
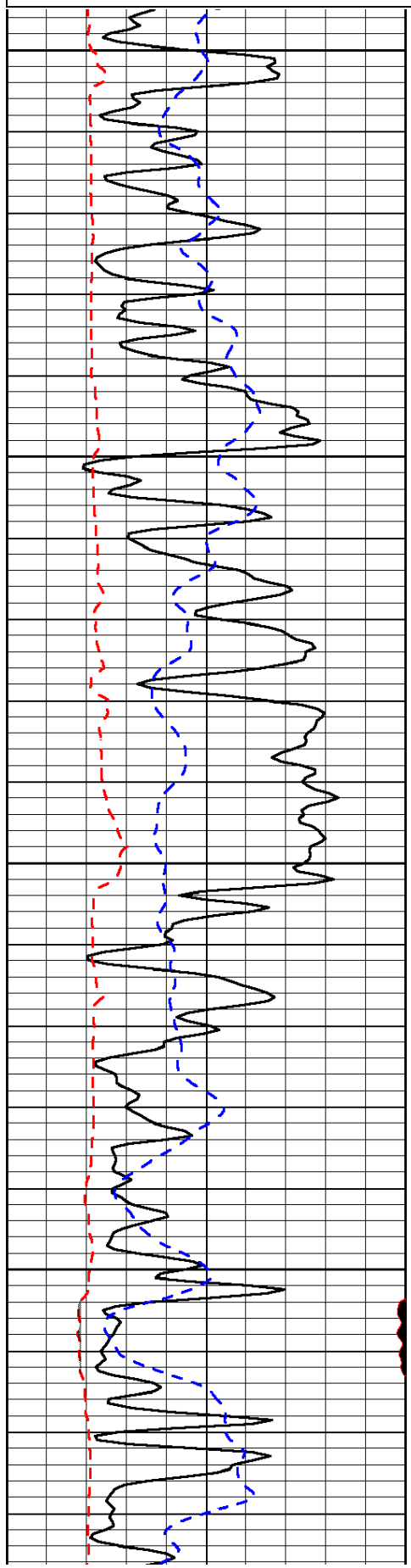
 Hays,
 South on Hwy 183 to Smoky Hill River Rd, 3/4 West,
 North into

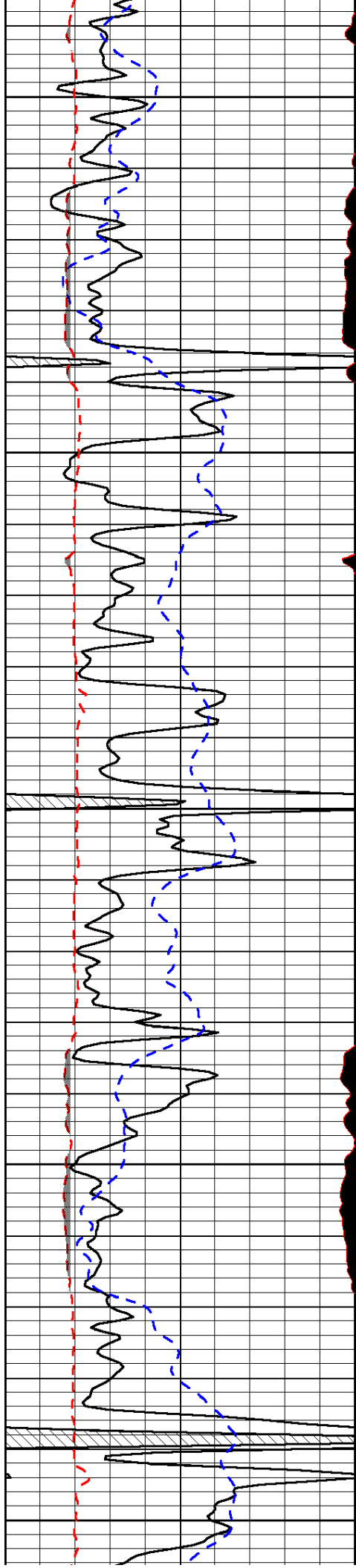
Database File: tdi_082613hd.db
 Dataset Pathname: dil/tdistck
 Presentation Format: micro
 Dataset Creation: Mon Aug 26 18:14:27 2013
 Charted by: Depth in Feet scaled 1:240

0	Gamma Ray (GAPI)	150
6	MCAL (in)	16
2.875	Mud Cake (in)	7.875
-200	SP (mV)	0

0	Micro Inverse 1 X 1 (Ohm-m)	40
0	Micro Normal 2" (Ohm-m)	40
10000	Line Weight (lb)	0

LSPD
(ft/min)





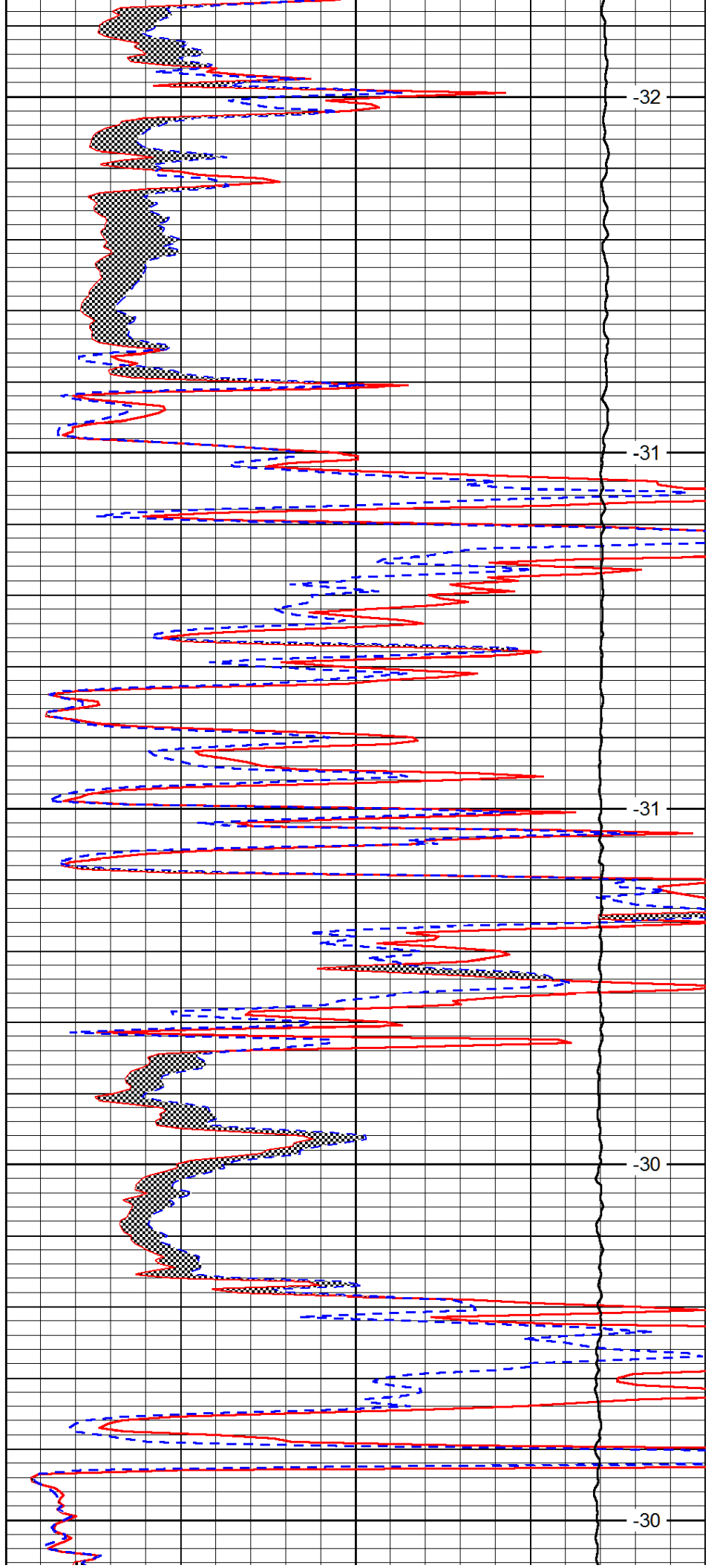
3000

3050

3100

3150

3200



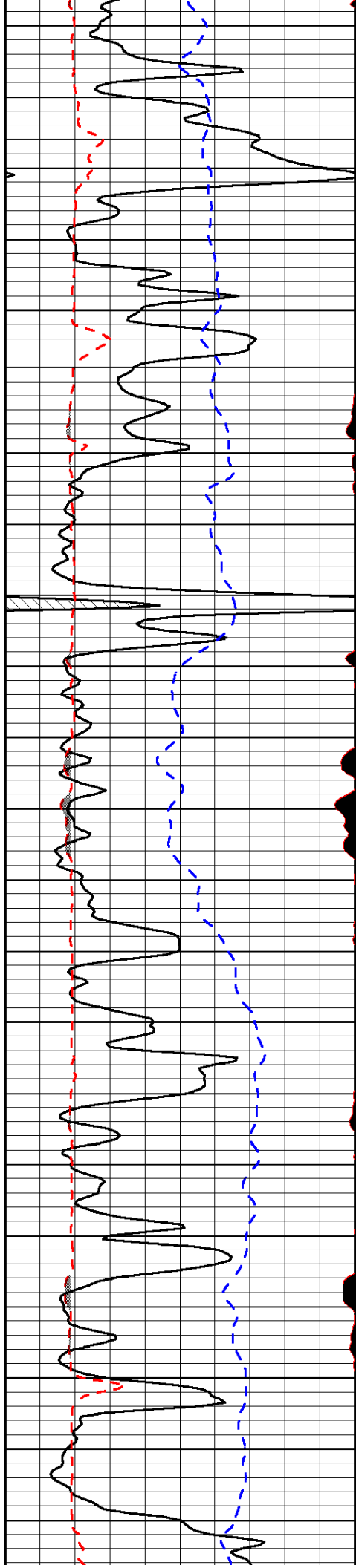
-32

-31

-31

-30

-30

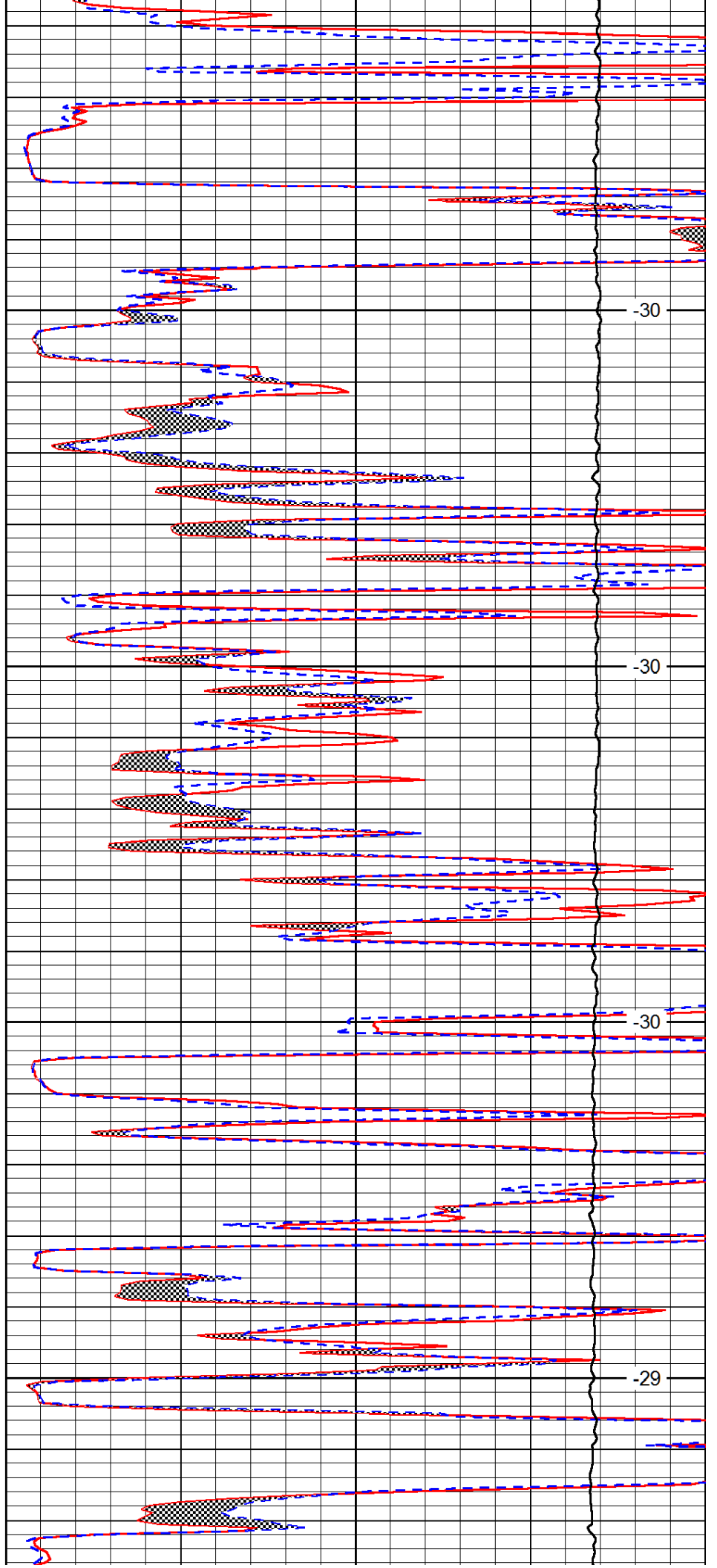


3250

3300

3350

3400

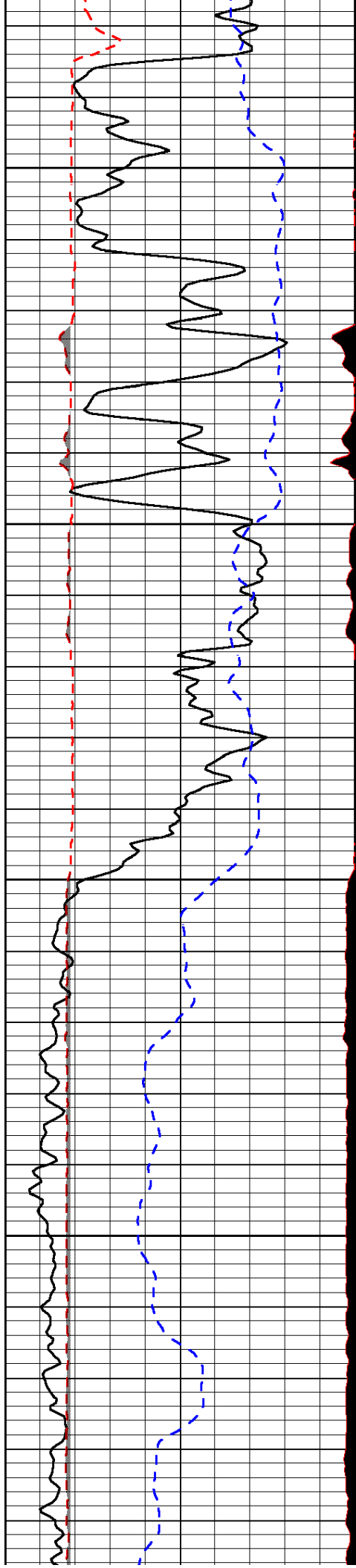


-30

-30

-30

-29

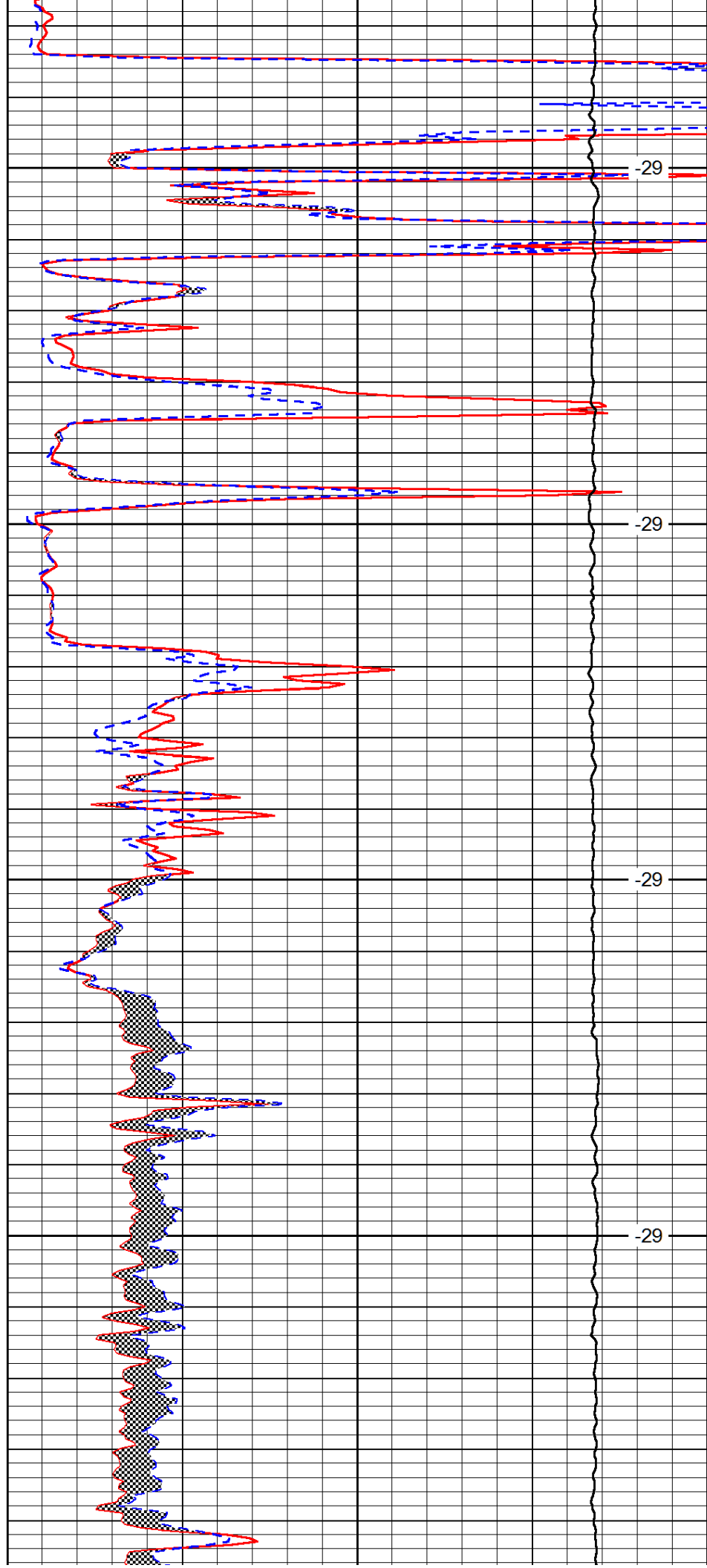


3450

3500

3550

3600

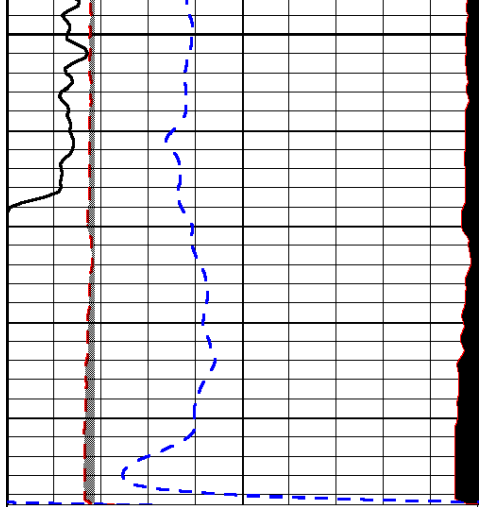


-29

-29

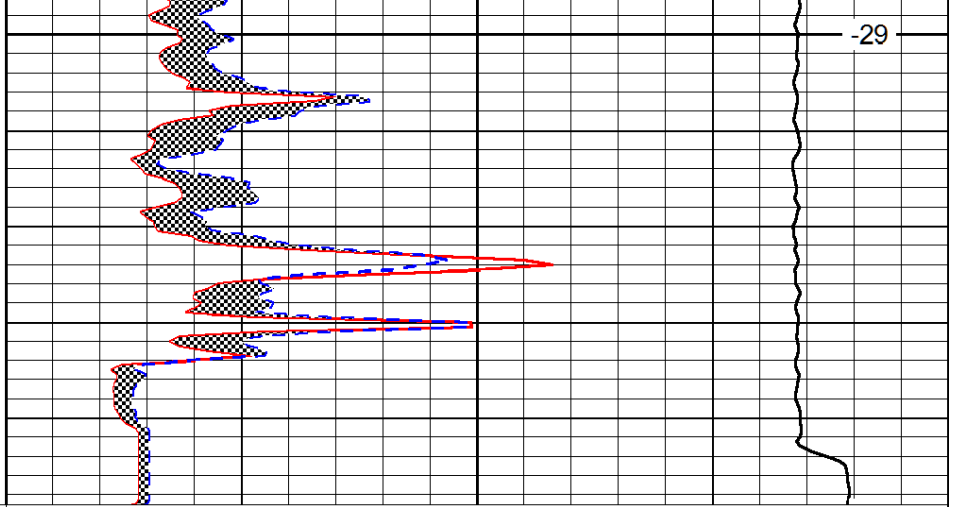
-29

-29



0	Gamma Ray (GAPI)	150
6	MCAL (in)	16
2.875	Mud Cake (in)	7.875
-200	SP (mV)	0

3650



0	Micro Inverse 1 X 1 (Ohm-m)	40
0	Micro Normal 2" (Ohm-m)	40
10000	Line Weight (lb)	0

-29

LSPD (ft/min)
