



Pioneer Energy Services

Dual Compensated Porosity Log

API No.	15-051-26559-00-00		
Company	TDL, Inc.		
Well	Marsha #1		
Field	Schoenchen West		
County	Elilis		
Location	330' FSL & 850' FWL		
Other Services	DILMEL		
Sec: 21	Twp: 15 S	Rge: 18 W	
Permanent Datum	Ground Level	Elevation	1950
Log Measured From	Kelly Bushing	10 Ft. Above Perm. Datum	
Drilling Measured From	Kelly Bushing		
Date	08-26-2013		
Run Number	One		
Type Log	CNL / CDL		
Depth Driller	3695		
Depth Logger	3693		
Bottom Logged Interval	3672		
Top Logged Interval	2800		
Type Fluid In Hole	Chemical		
Salinity, PPM CL	3500		
Density	9.2		
Level	Full		
Max. Rec. Temp. F	115		
Operating Rig Time	3 Hours		
Equipment -- Location	91 Hays		
Recorded By	D. Schmidt		
Witnessed By	Tom Denning		

Borehole Record				Casing Record			
Run No.	Bit	From	To	Size	Wgt.	From	To
One	12.25	00	1135	8.625	23#	00	1135
Two	7.875	1135	TD				

<<< Fold Here >>>

All interpretations are opinions based on inferences from electrical or other measurements and we cannot and do not guarantee the accuracy or correctness of any interpretation, and we shall not, except in the case of gross or willful negligence on our part, be liable or responsible for any loss, costs, damages, or expenses incurred or sustained by anyone resulting from any interpretation made by any of our officers, agents or employees. These interpretations are also subject to our general terms and conditions set out in our current Price Schedule.

Comments

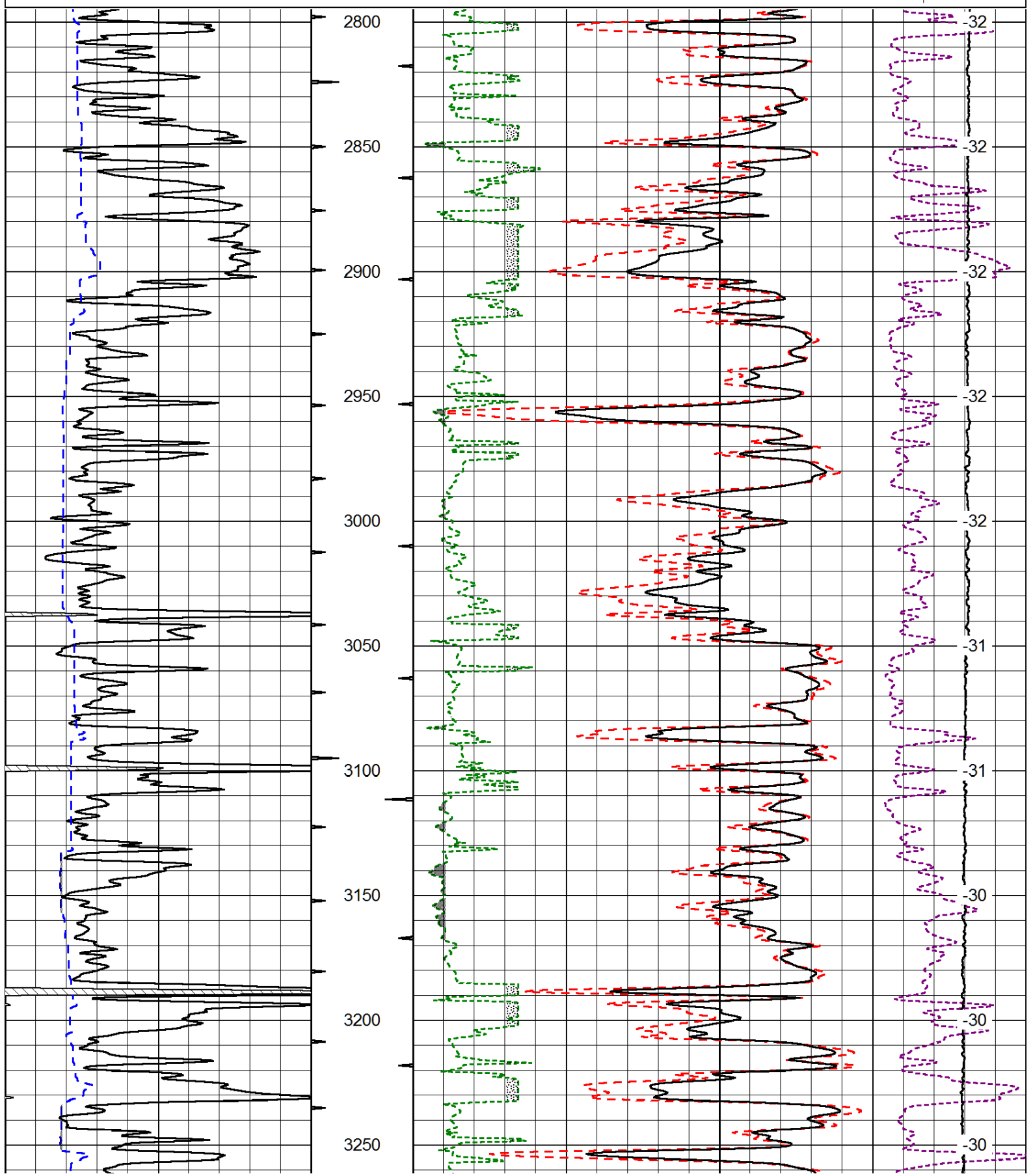
Thank you for using Log-Tech, Inc.
(785) 625-3858

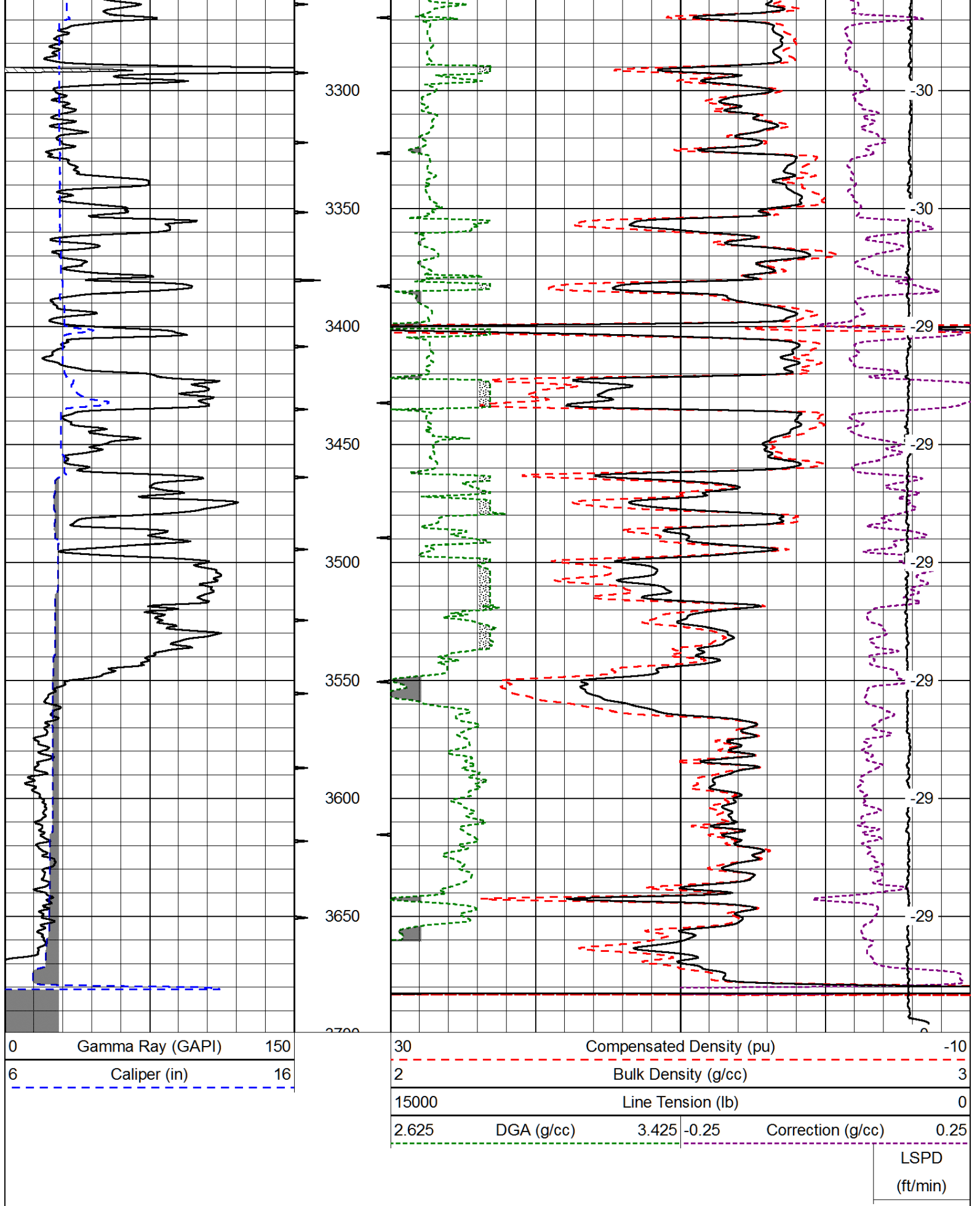
Hays,
South on Hwy 183 to Smoky Hill River Rd, 3/4 West,
North into

0	Gamma Ray (GAPI)	150
6	Caliper (in)	16

30	Compensated Density (pu)			-10	
2	Bulk Density (g/cc)			3	
15000	Line Tension (lb)			0	
2.625	DGA (g/cc)	3.425	-0.25	Correction (g/cc)	0.25

LSPD
(ft/min)





Database File: tdi_082613hd.db
 Dataset Pathname: dil/tdistck
 Presentation Format: endline

0	Gamma Ray (GAPI)	150
6	Caliper (in)	16

30	CNLS (pu)		-10
30	Compensated Density (2.71 ma) (pu)		-10
2.625	DGA (g/cc)	3.425	Correction (g/cc) 0.25
10000	Line Tension (lb)		0

LSPD
(ft/min)

