



Triple Combo  
Kansas Petrophysical Analysis

API WELL NO. 15077217970100

CLIENT: SANDRIDGE EXP & PROD  
 COMPANY: TERESIA 3509 1-16H  
 WELL: WILDCAT  
 FIELD: HARPER  
 COUNTY: HARPER STATE: KANSAS

LOCATION: TWP.: 35 S - Range: 9 W - Sec. 16  
 200 FSL 666 FEL  
 SHL

OTHER COMPUTATIONS  
 Rw = 0.03

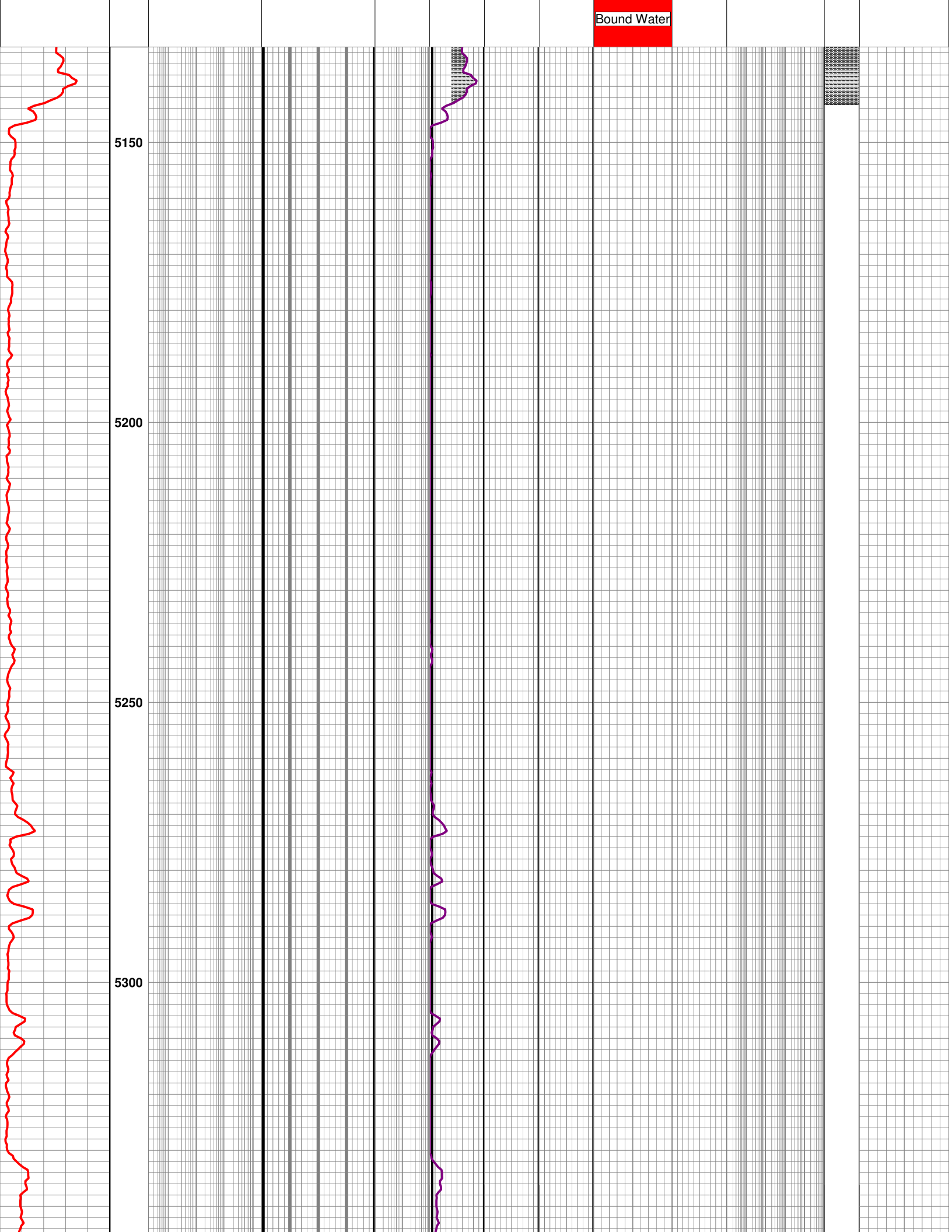
PERMANENT DATUM GR \_\_\_\_\_ ELEV. -999.25  
 LOG MEASURED FROM KB \_\_\_\_\_ ABOVE PERM DATUM  
 DRILLING MEASURED FROM KB \_\_\_\_\_

ELEV. K.B. 1246  
 D.F. \_\_\_\_\_  
 G.L. 1228

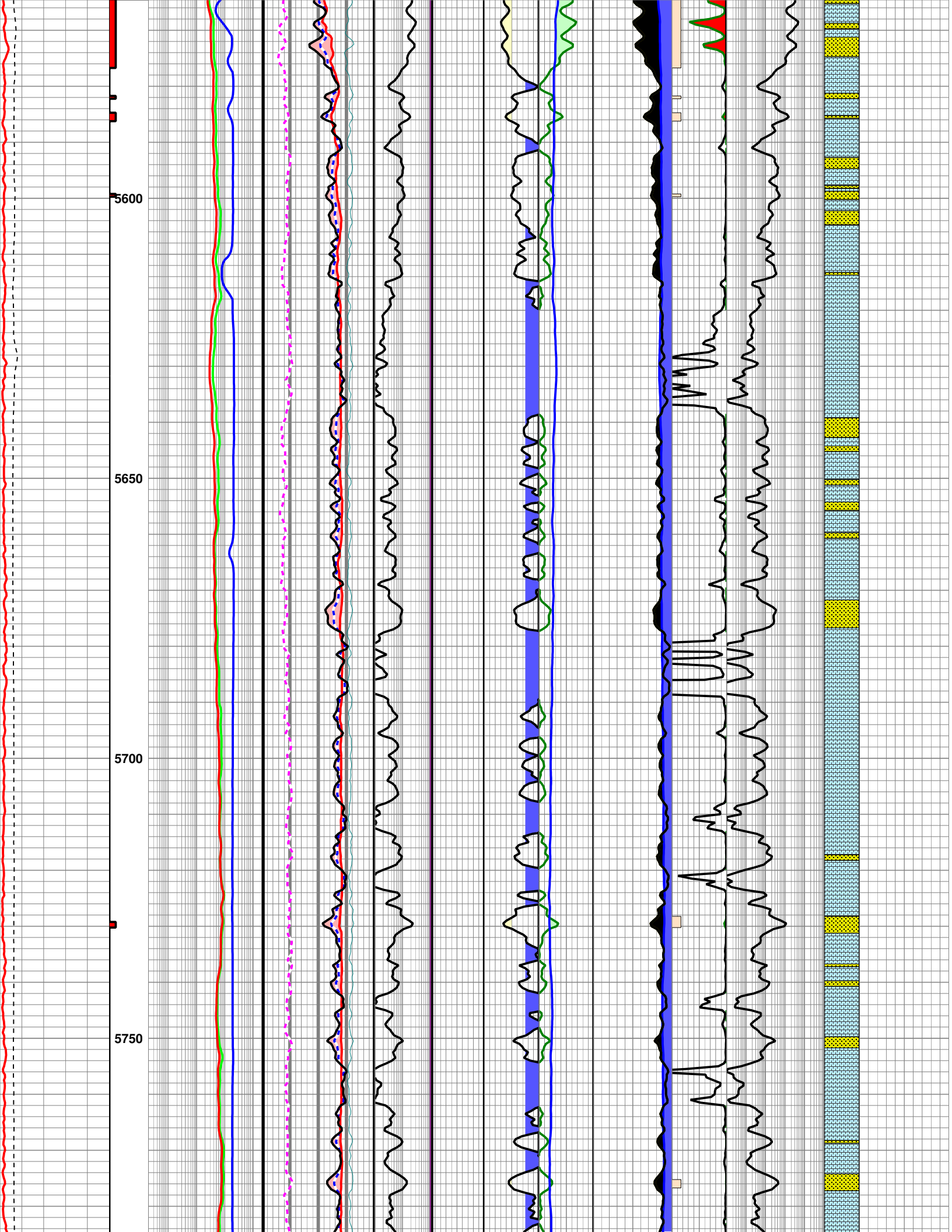
|   |                       |
|---|-----------------------|
| DATE                                    | 30 - DEC - 1899       |
| RUN NO.                                 |                       |
| DEPTH - DRILLER                         |                       |
| DEPTH - LOGGER                          | 9029                  |
| BOTTOM LOGGED INTERVAL                  | 9029                  |
| TOP LOGGED INTERVAL                     | 3000                  |
| CASING - DRILLER                        |                       |
| CASING - LOGGER                         |                       |
| BIT SIZE                                |                       |
| TYPE FLUID IN HOLE                      |                       |
| CASING SIZE                             | CASING WEIGHT         |
| DENSITY                                 | VISCOSITY             |
| PH                                      | FLUID LOSS            |
| SOURCE OF SAMPLE                        |                       |
| R <sub>m</sub> @ MEASURED TEMP.         | @                     |
| R <sub>mp</sub> @ MEASURED TEMP.        | @                     |
| R <sub>mc</sub> @ MEASURED TEMP.        | @                     |
| SOURCE: R <sub>mp</sub> R <sub>mc</sub> | @                     |
| R <sub>m</sub> @ BHT                    | @                     |
| CIRCULATION STOP DATE                   |                       |
| MAX. REC. TEMP                          |                       |
| Company                                 | LOCATION ThruBit LLC. |
| RECORDED BY                             |                       |
| WITNESSED BY                            |                       |

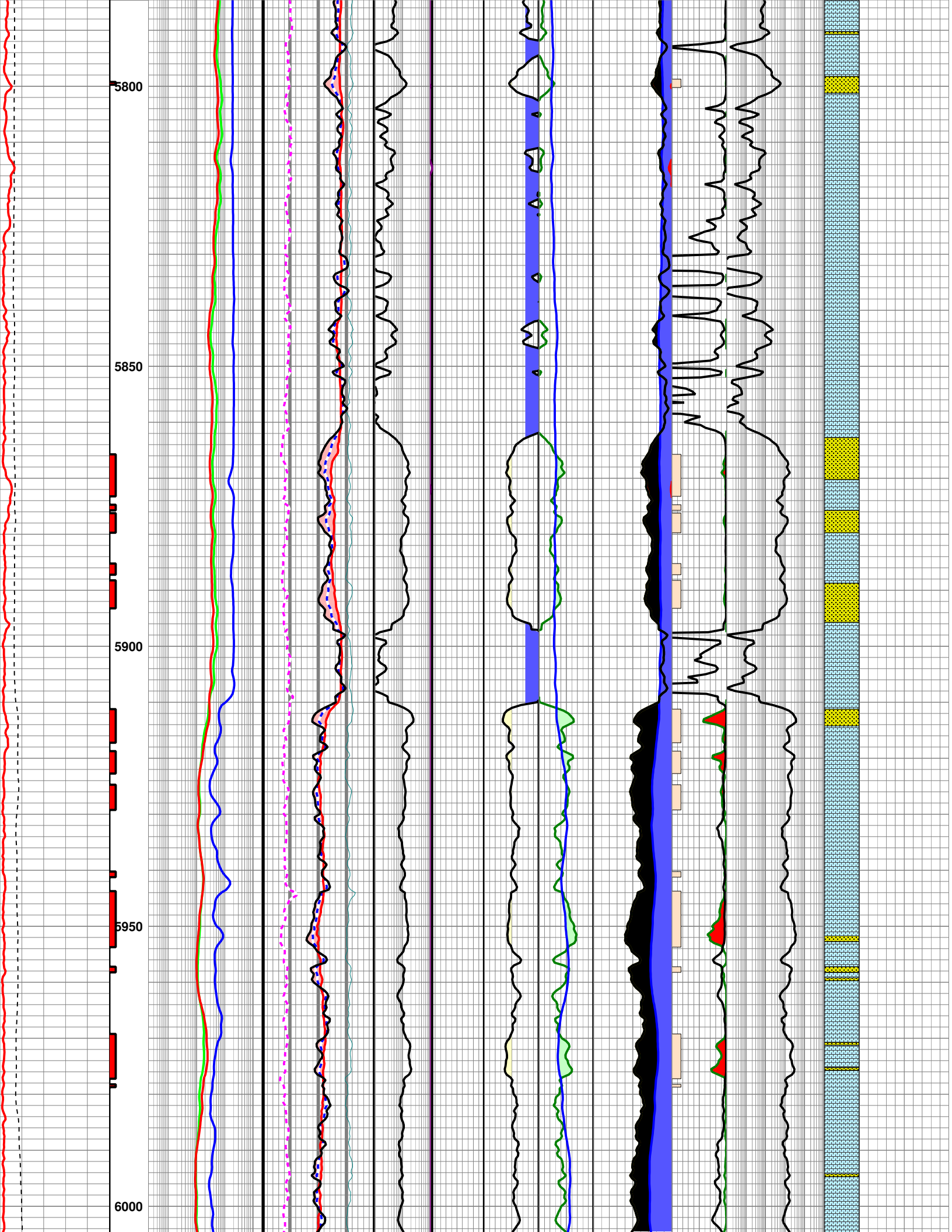
FOLD HERE

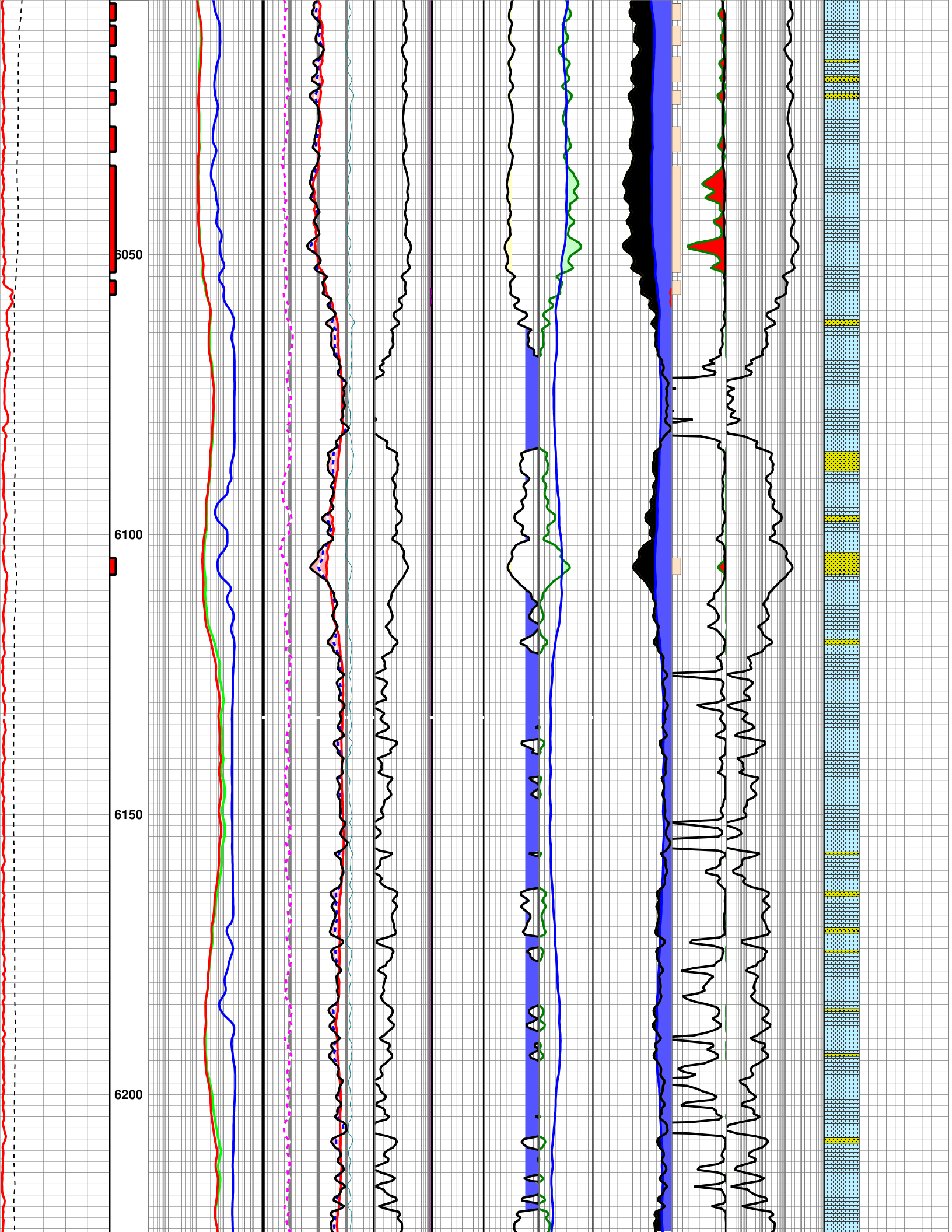
| Correlation | Depth   | O-H Resistivity  | O-H Porosity | RWA Flag | Vclay    | Sw      | BVw      | Pore Space    | RP       | K(Coats) | NT-LIT | Mudlog Data |         |
|-------------|---------|------------------|--------------|----------|----------|---------|----------|---------------|----------|----------|--------|-------------|---------|
| CGR(N/A)    | MD      | ResD(90IN_2FT_R) | PHID         | RWA_SXF  | Vshl     | SwE     | BVW      | PHIT          | Kwtr     | K        | Indsto | C1(N/A)     |         |
| 150         |         | 0.2 OHM-M 2000   | 0.3          | -0.1     | 10.01    | 10      | 10       | 0.1           | 0.2      | 01       | 00.1   | 10000       | 0.0 250 |
| GR          | BHF     | ResM(30IN_2FT_R) | PHIN         |          | Vshl>40% | Sw>=75% | BVhc     | PHIA          | Khc      |          | nestor | C2(N/A)     |         |
| 150         |         | 0.2 OHM-M 2000   | 0.3          | -0.1     |          |         | 0        | 0.1           | 0.2      | 01       | 0      |             | 0.0 250 |
| GAPI        | Net Pay | ResS(10IN_2FT_R) | SXP          |          |          | Sw<50%  | Vhc > BV | BVW           | Khc>Kwtr |          | olomit | C3(N/A)     |         |
| 15          |         | 0.2 OHM-M 2000   | 0.3          | -0.1     |          |         |          | 0.2           | 0        |          |        |             | 0.0 250 |
| CALI(DCAL)  |         |                  | PEF          |          |          |         |          | PHIE          | Khc>Kwtr |          | Shale  | C4(N/A)     |         |
| IN          |         |                  | 0.0          | BARN     | 20       |         |          | 0.2           | 0        |          |        |             | 0.0 250 |
|             |         |                  | DRHO         |          |          |         |          | BVWb          |          |          |        | OIL_CURVE   |         |
|             |         |                  | 0.75         | G/CC     | -0.25    |         |          | 0.2           | 0        |          |        |             | 0.0 1   |
|             |         |                  | Crossover    |          |          |         |          | Hydrocarbon   |          |          |        | ROP2        |         |
|             |         |                  |              |          |          |         |          | Clk Volume Wa |          |          |        | 150         | 0       |
|             |         |                  |              |          |          |         |          | Clay Water    |          |          |        |             |         |

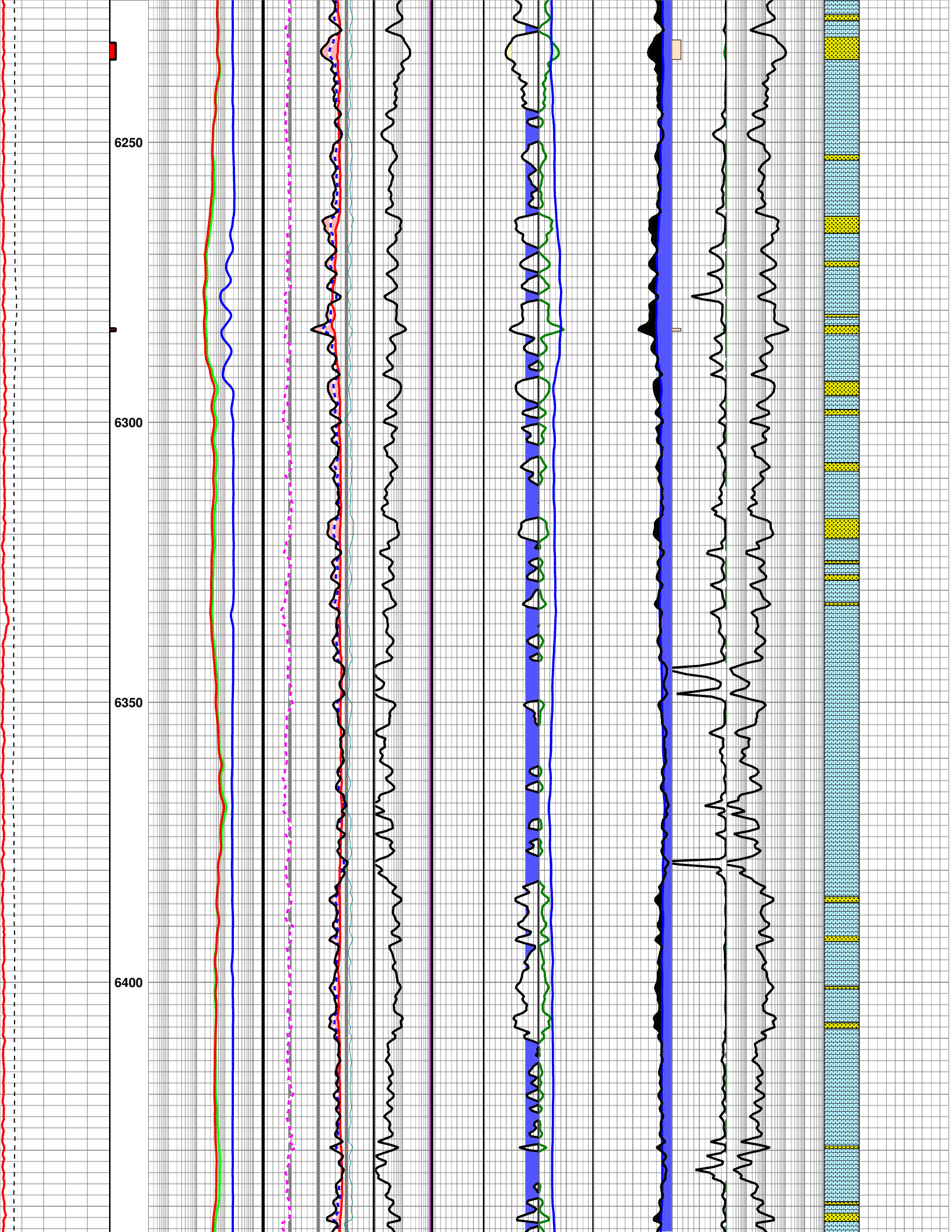


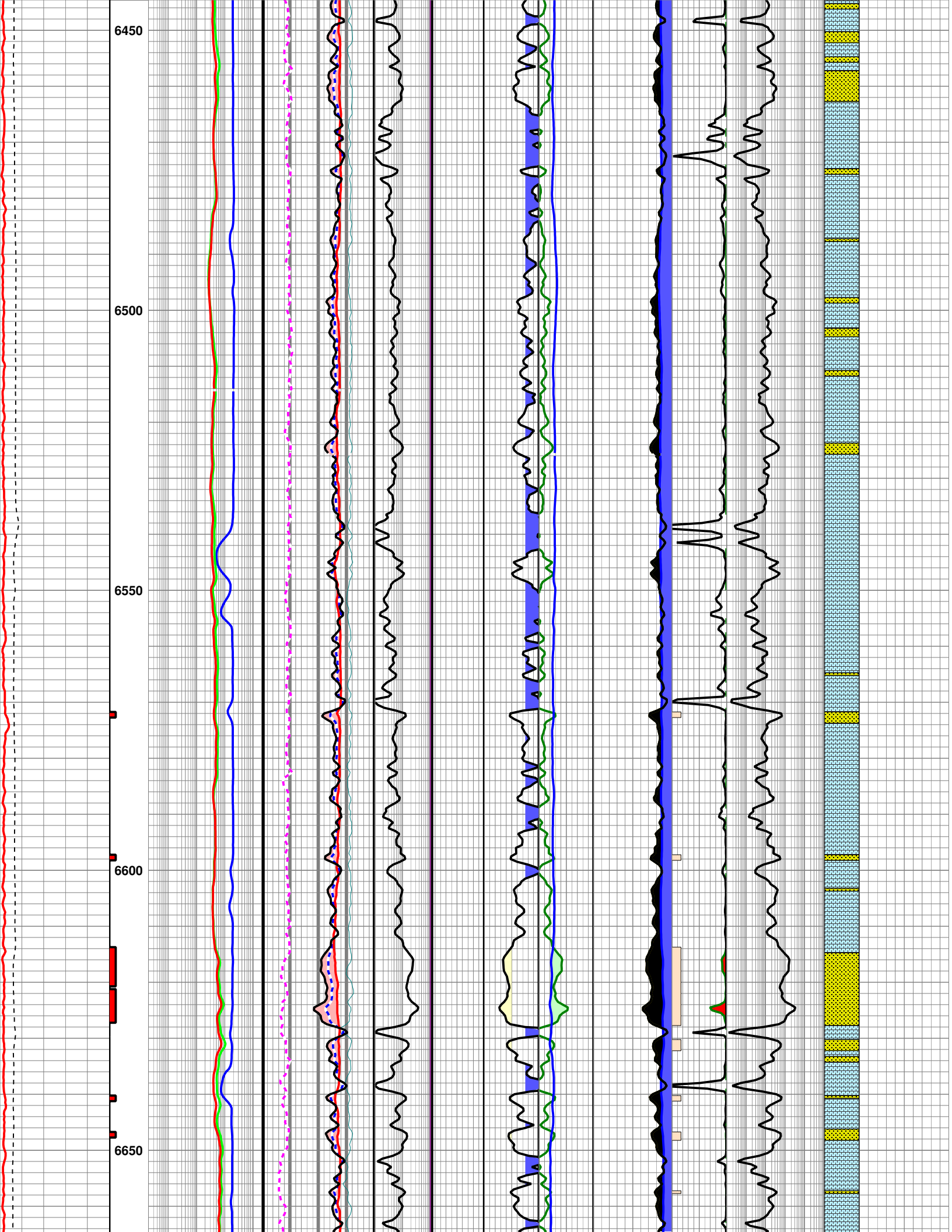


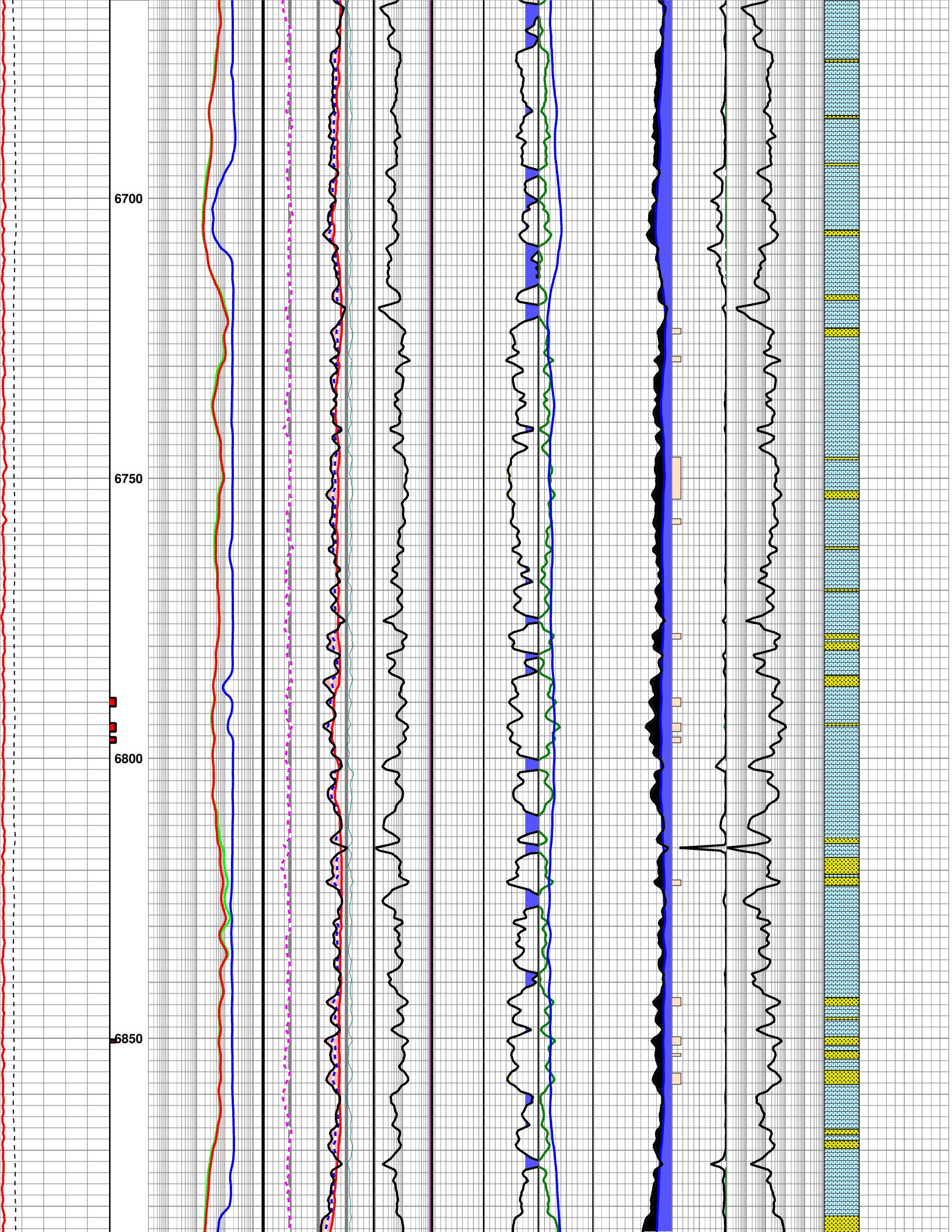


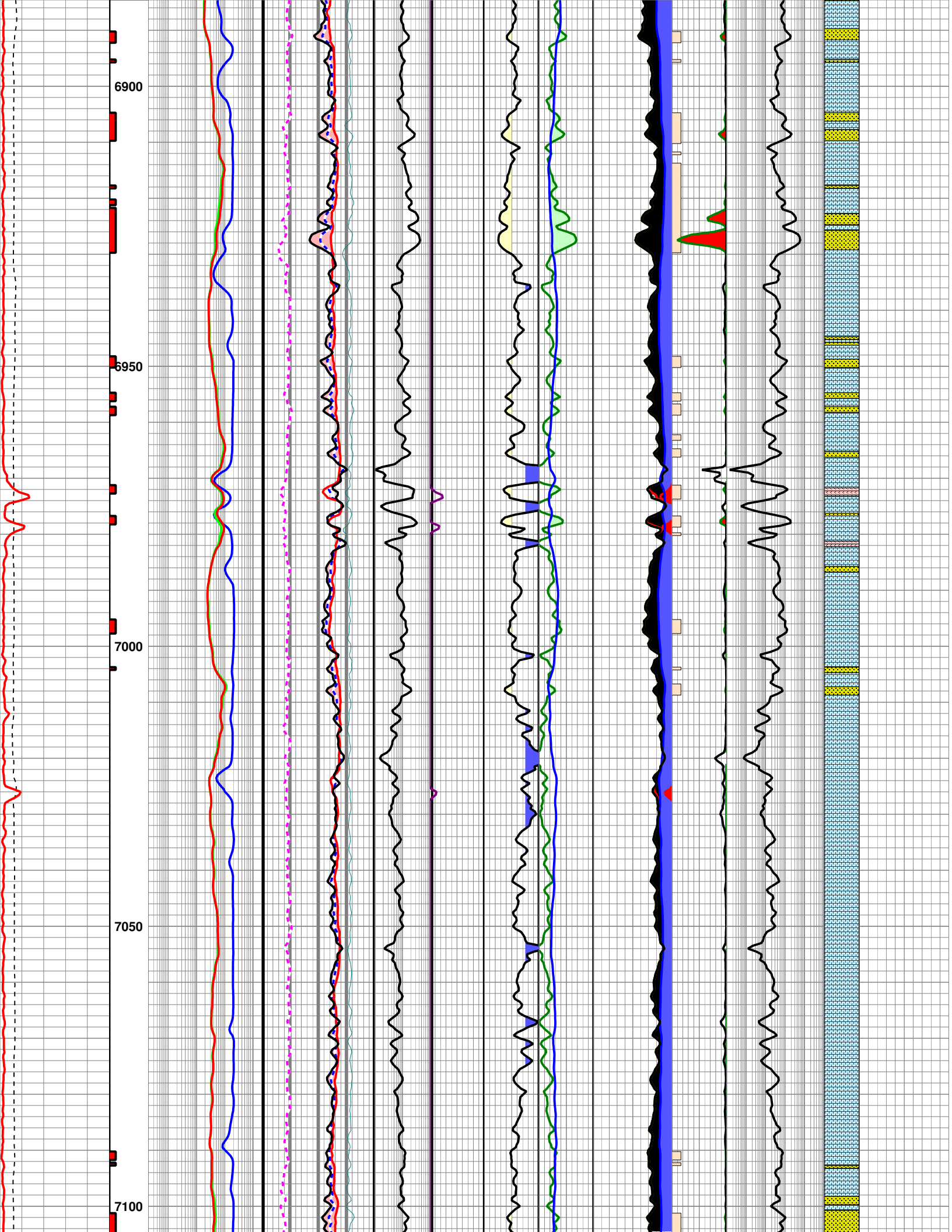


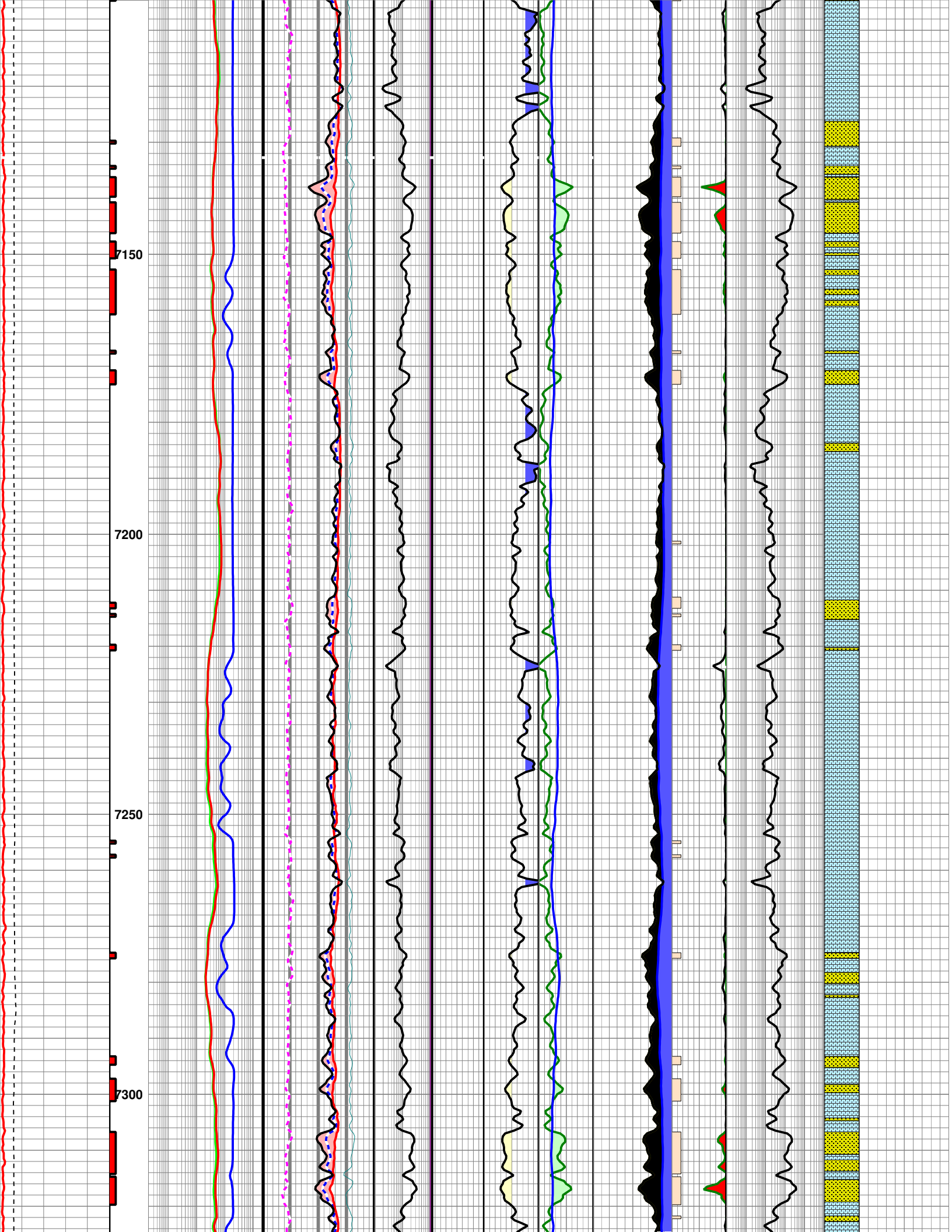


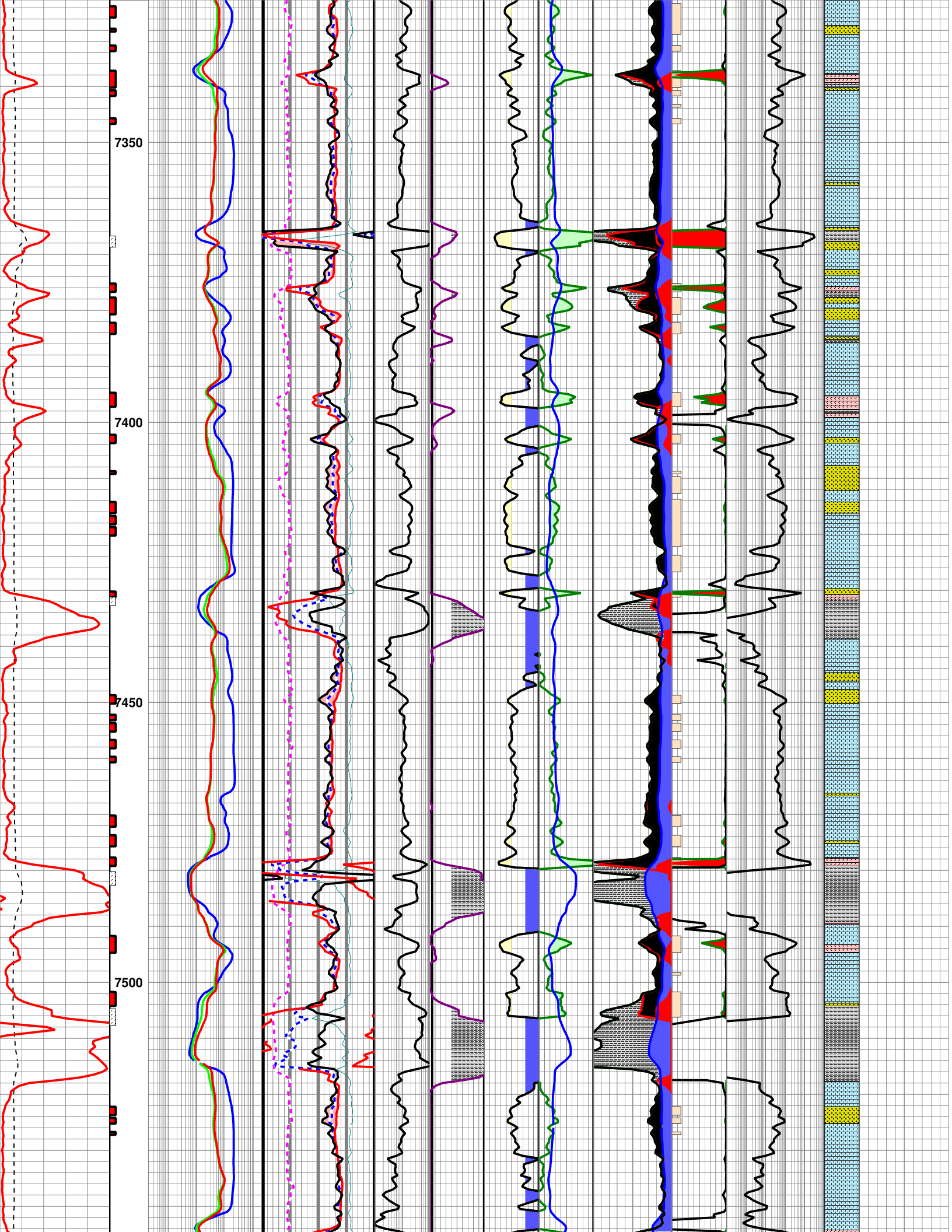


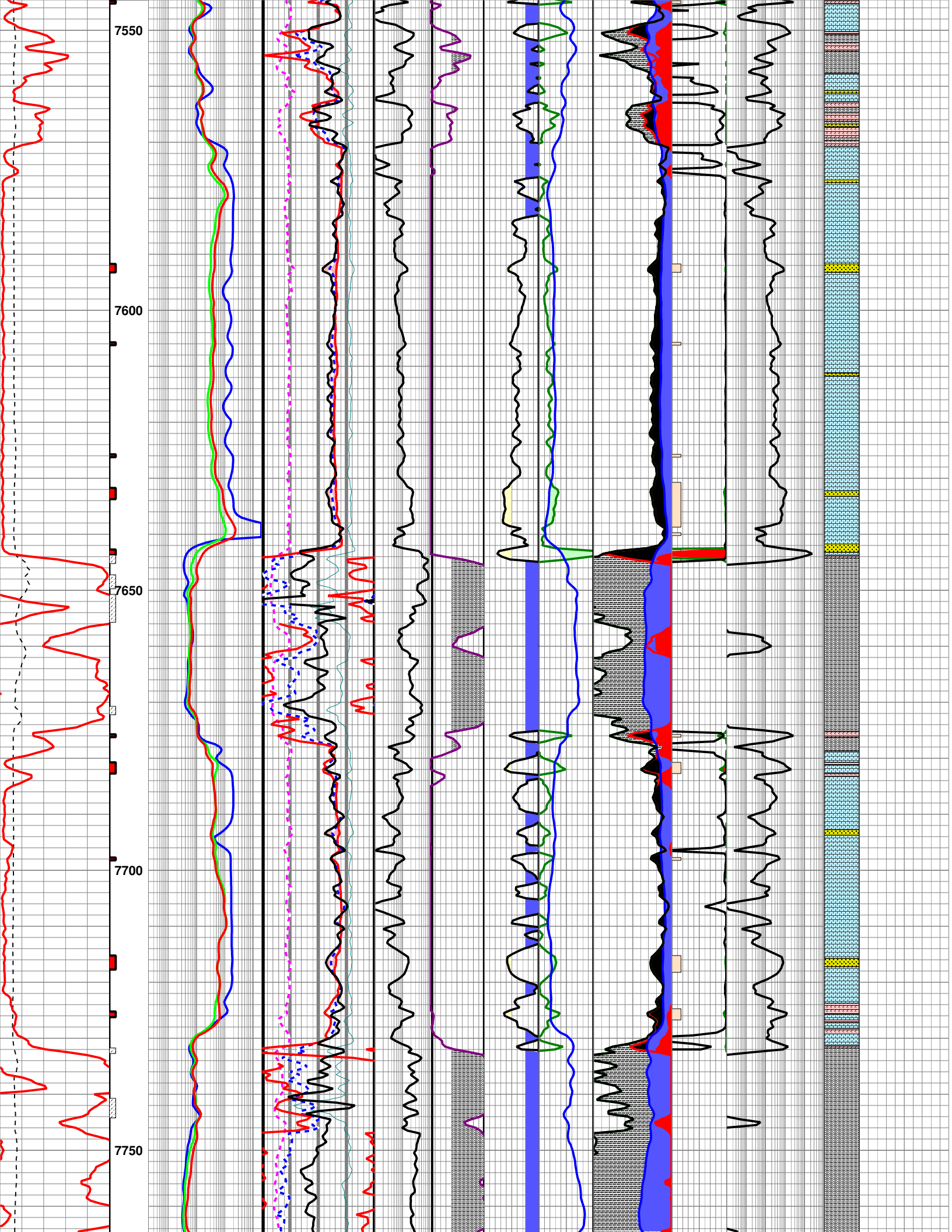


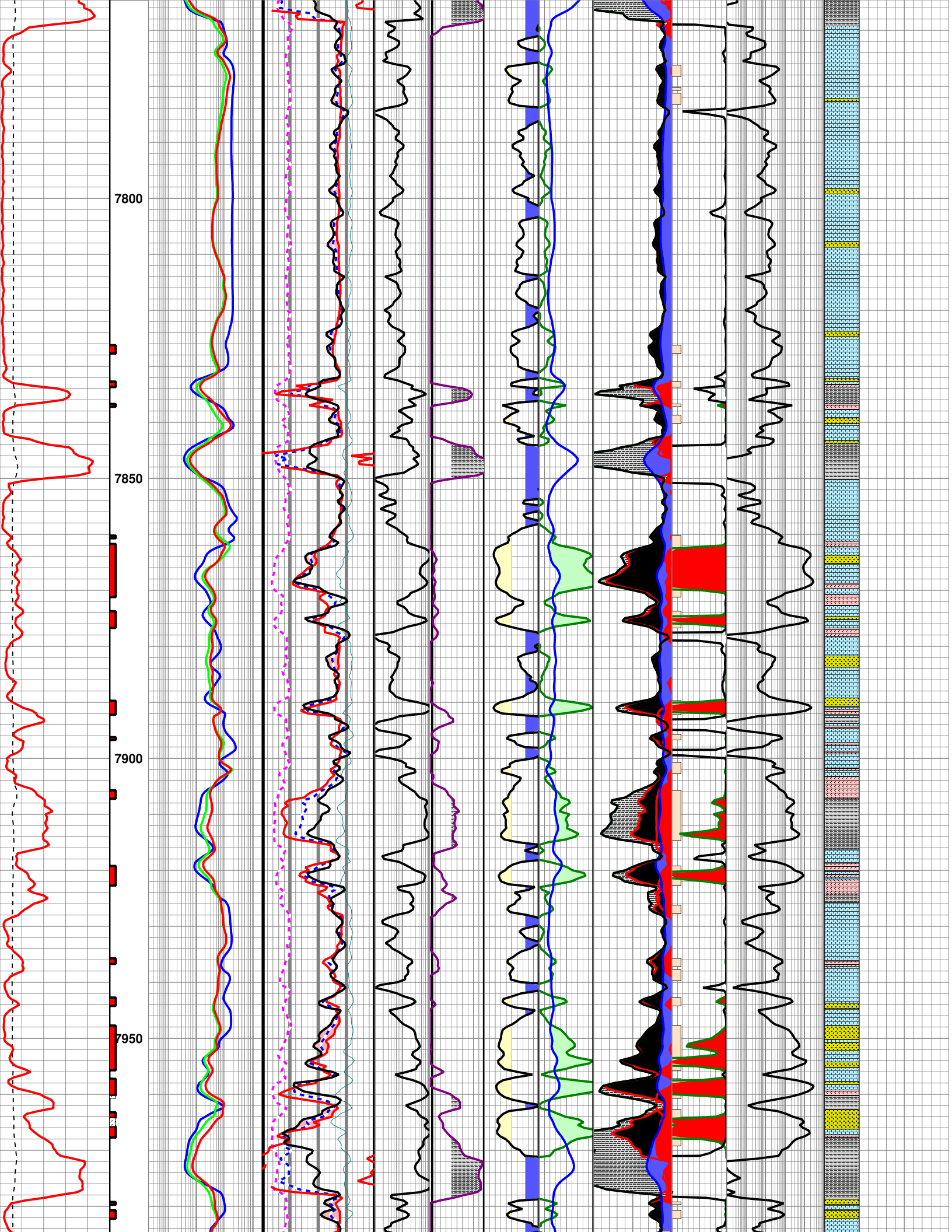


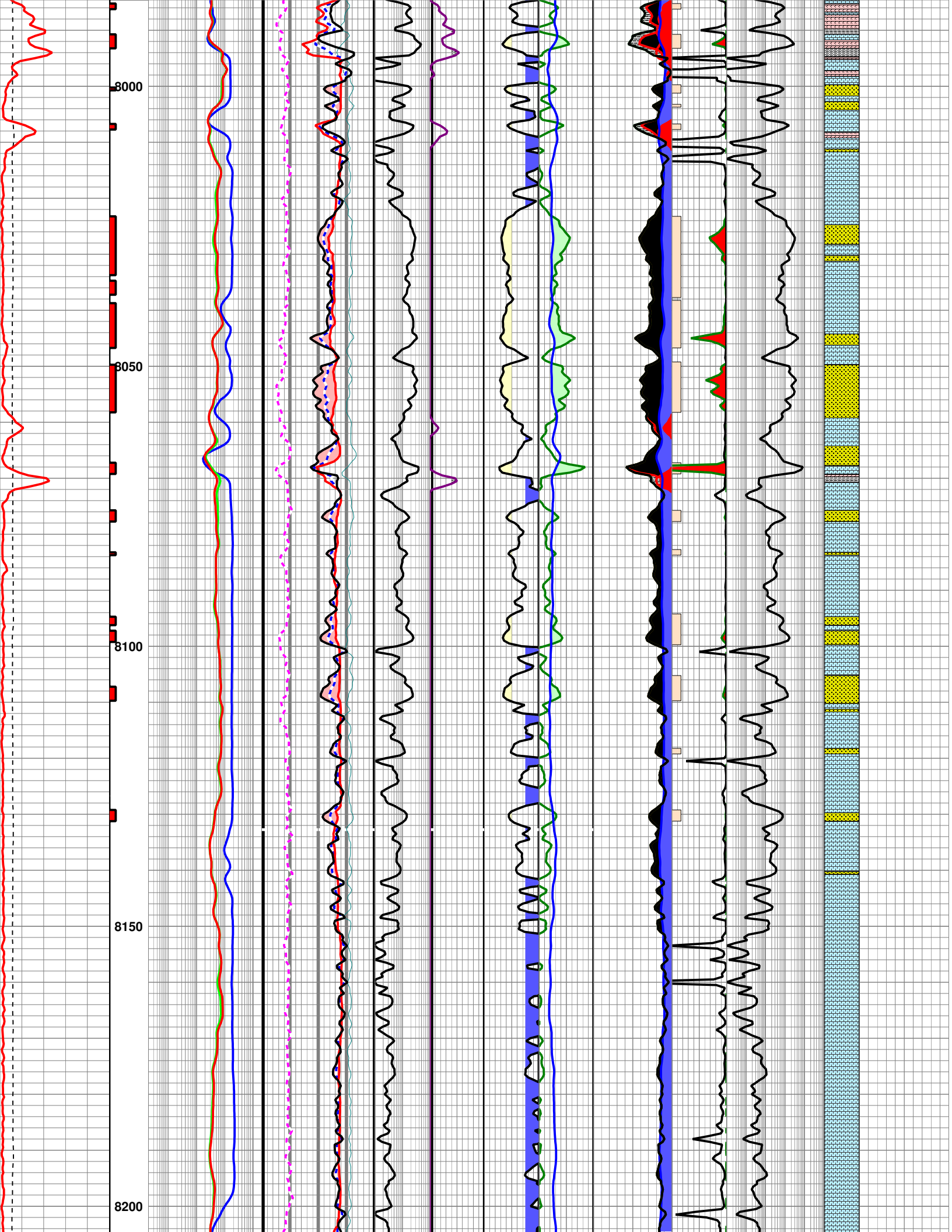


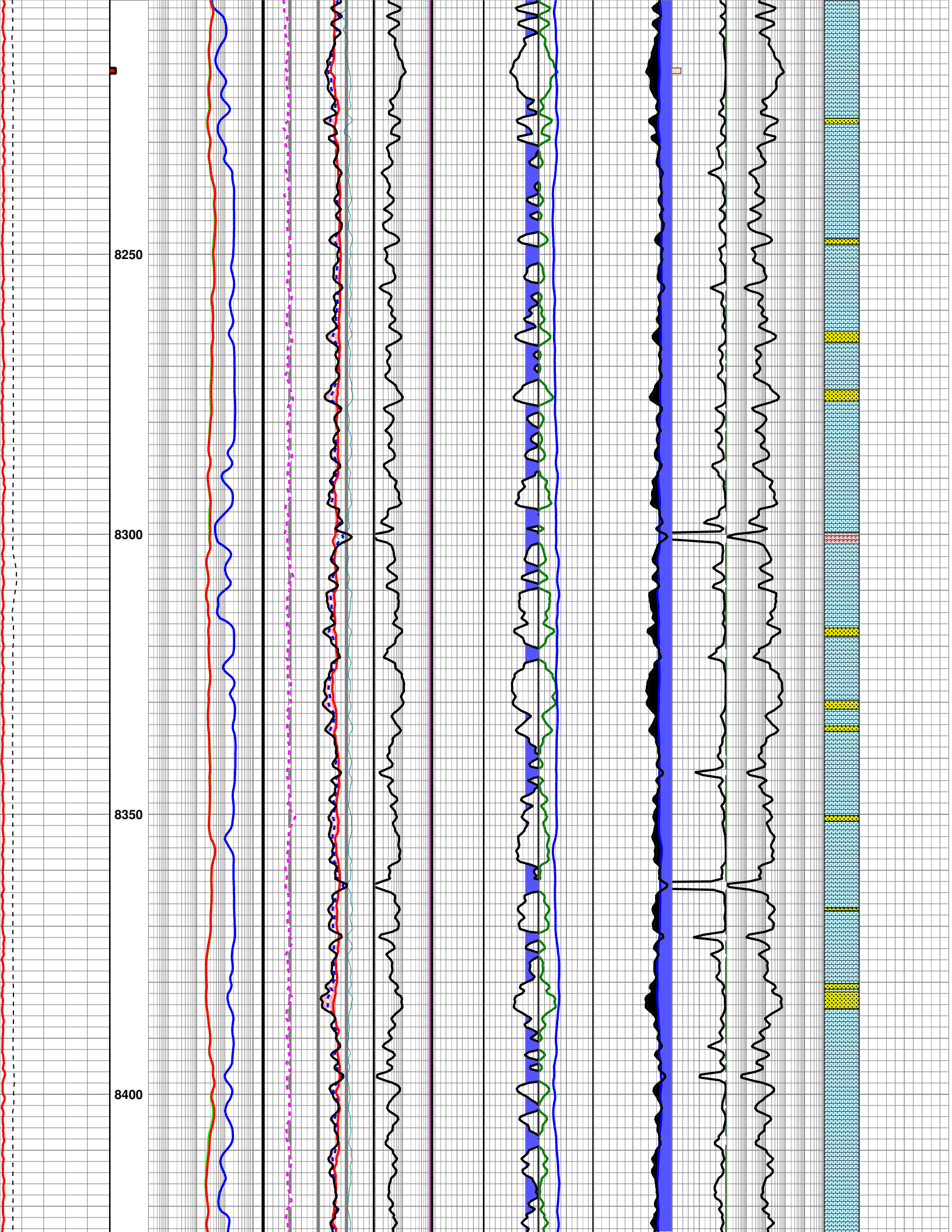


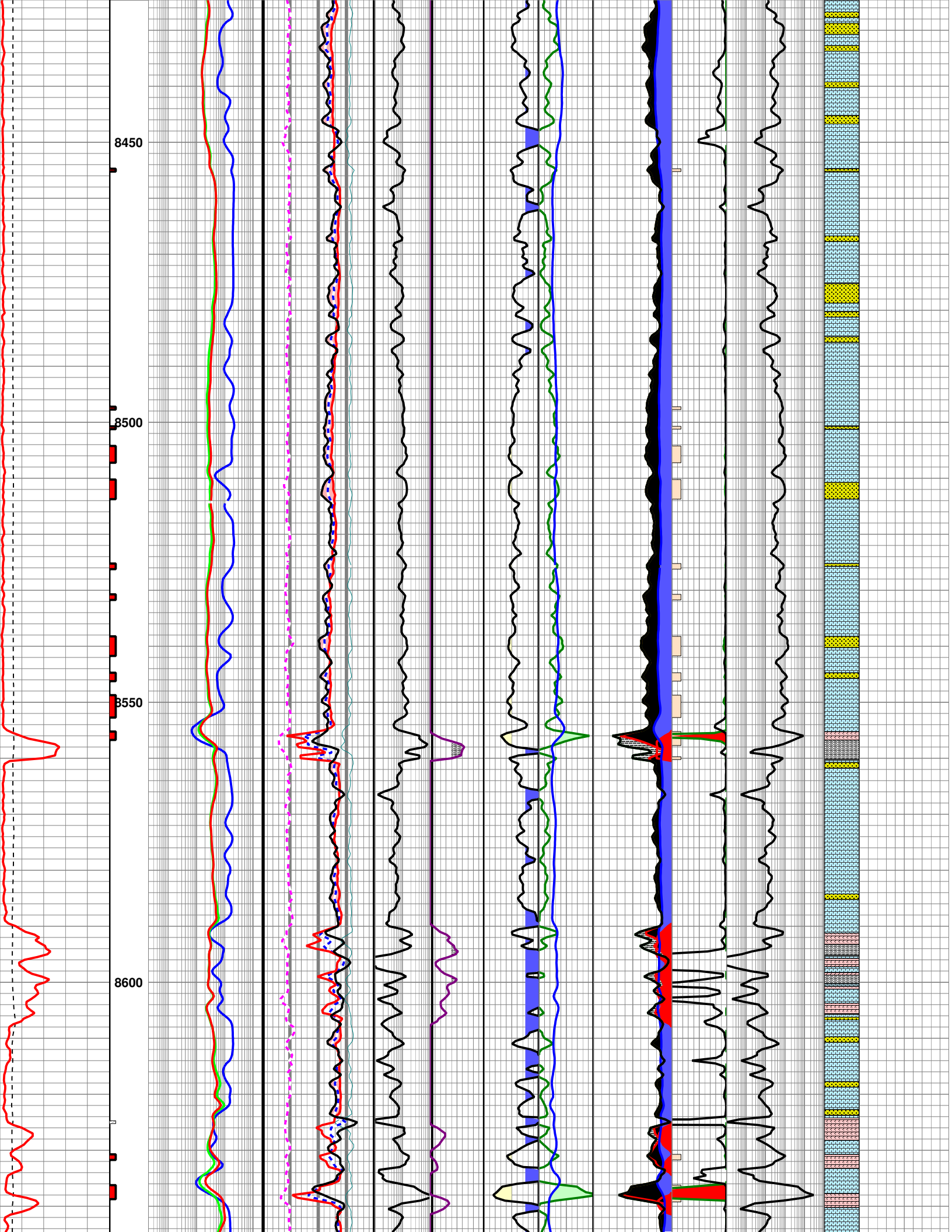


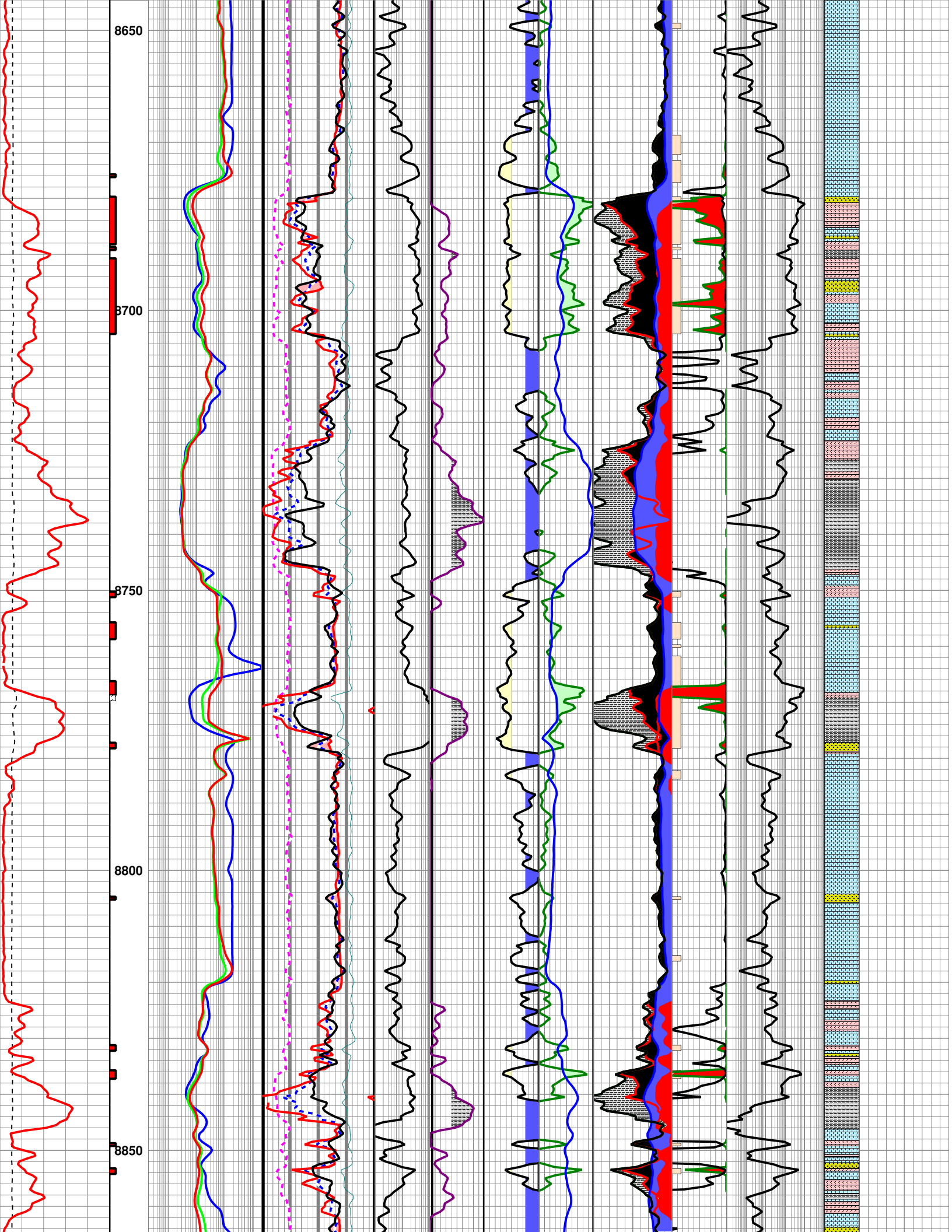


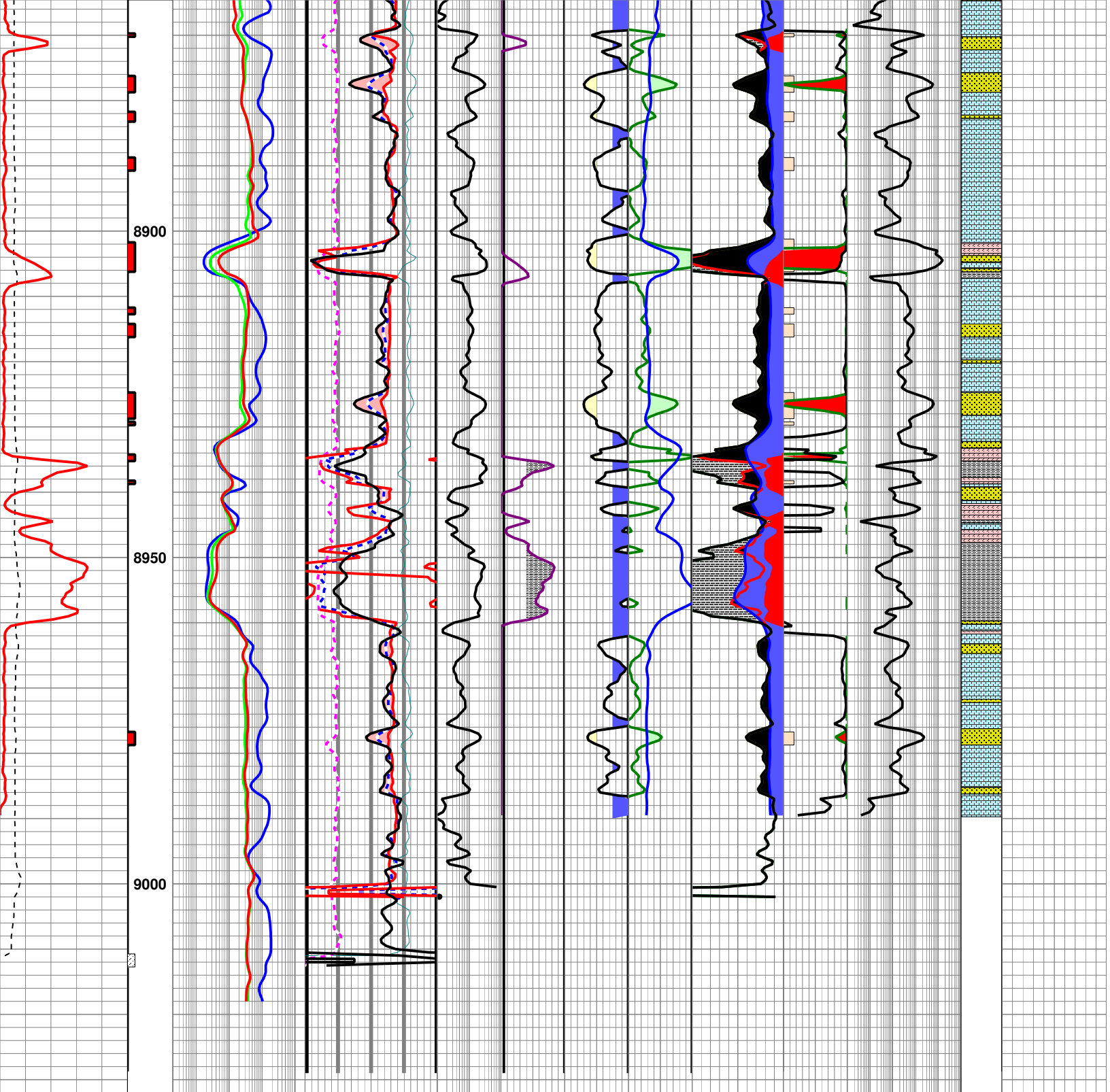








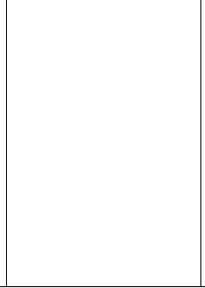




| Correlation | Depth   | O-H Resistivity  | O-H Porosity | RWA Flag | Vclay    | Sw      | BVw      | Pore Space | RP       | K(Coats) | NT-LIT | Mudlog Data |
|-------------|---------|------------------|--------------|----------|----------|---------|----------|------------|----------|----------|--------|-------------|
| CGR(N/A)    | MD      | ResD(90IN_2FT_R) | PHID         | RWA_SXF  | Vshl     | SwE     | BVW      | PHIT       | Kwtr     | K        | ndsto  | C1(N/A)     |
| 0           | 150     | 0.2 OHM-M 2000.3 | -0.10        | 0.01     | 10.000   | 10      | 10       | 0.2        | 01       | 00.1     | 10000  | 0.0 250     |
| GR          | BHF     | ResM(30IN_2FT_R) | PHIN         |          | Vshl>40% | Sw>=75% | BVhc     | PHIA       | Khc      |          | nesto  | C2(N/A)     |
| 0           | 150     | 0.2 OHM-M 2000.3 | -0.1         |          |          |         | 0        | 0.2        | 01       | 0        |        | 0.0 250     |
| CALI(DCAL)  | Net Pay | ResS(10IN_2FT_R) | SXP          |          |          | Sw<50%  | Vhc > BV | BVW        | Khc>Kwtr |          | olomit | C3(N/A)     |
| 5           | 15      | 0.2 OHM-M 2000.3 | -0.1         |          |          |         |          | 0.2        | 0        |          |        | 0.0 250     |
|             |         |                  | PEF          |          |          |         |          | PHIE       | Khc>Kwtr |          | Shale  | C4(N/A)     |
|             |         |                  | 0.0 BARN 20  |          |          |         |          | 0.2        | 0        |          |        | 0.0 250     |
|             |         |                  | DRHO         |          |          |         |          | BVWb       |          |          |        | OIL_CURVE   |

0.75 G/CC -0.25

Crossover



0.2 0

Hydrocarbon

lk Volume Wa

Clay Water

Bound Water

0.0

ROP2

150 0