



**COMPLETION
& PRODUCTION
SERVICES CO.**

**DUAL
INDUCTION
LOG**

Company OIL COMPANY OF AMERICA, INC.
Well SLIMMER #6
Field BEMIS-SHUTTS
County ELLIS
State KANSAS

Company OIL COMPANY OF AMERICA, INC.
Well SLIMMER #6
Field BEMIS-SHUTTS
County ELLIS State KANSAS

Location: API # : 15-051-26336-00-00
SW - NE - SW
1650' FSL & 3580' FEL
SEC 12 TWP 11S RGE 17W
Permanent Datum GROUND LEVEL Elevation 1817
Log Measured From KELLY BUSHING 7' A.G.L.
Drilling Measured From KELLY BUSHING
Other Services CDL/CNL
Elevation
K.B. 1824
D.F. 1822
G.L. 1817

Date	10/29/12		
Run Number	ONE		
Depth Driller	3400		
Depth Logger	3400		
Bottom Logged Interval	3398		
Top Log Interval	00		
Casing Driller	8 5/8" @ 1017		
Casing Logger	1016		
Bit Size	7 7/8		
Type Fluid in Hole	CHEMICAL MUD		
Density / Viscosity	9.3/53	CHLORIDES 5000 PPM	
pH / Fluid Loss	9.0/9.6		
Source of Sample	FLOWLINE		
Rim @ Meas. Temp	0.60@75F		
Rmf @ Meas. Temp	0.45@75F		
Rmc @ Meas. Temp	0.72@75F		
Source of Rmf / Rmc	MEASURED		
Rim @ BHT	0.41@110F		
Time Circulation Stopped	2 HOURS		
Time Logger on Bottom			
Maximum Recorded Temperature	110F		
Equipment Number	680		
Location	HAYS, KS.		
Recorded By	IAN MABB	JEFF GRONEMEG	
Witnessed By	ROGER MOSES		

<<< Fold Here >>>

All interpretations are opinions based on inferences from electrical or other measurements and we cannot and do not guarantee the accuracy or correctness of any interpretation, and we shall not, except in the case of gross or willful negligence on our part, be liable or responsible for any loss, costs, damages, or expenses incurred or sustained by anyone resulting from any interpretation made by any of our officers, agents or employees. These interpretations are also subject to our general terms and conditions set out in our current Price Schedule.

Comments

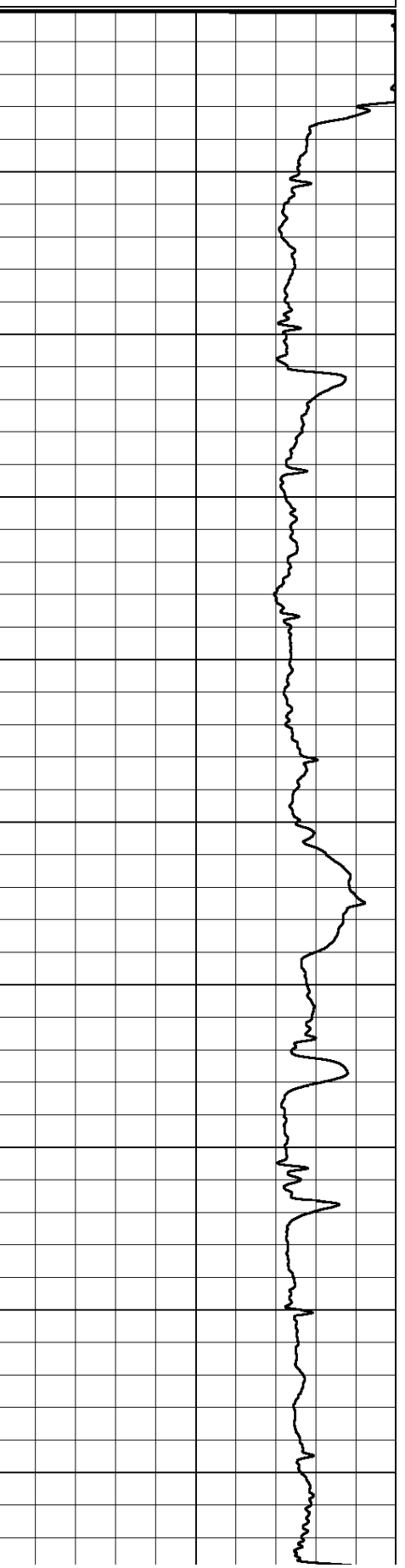
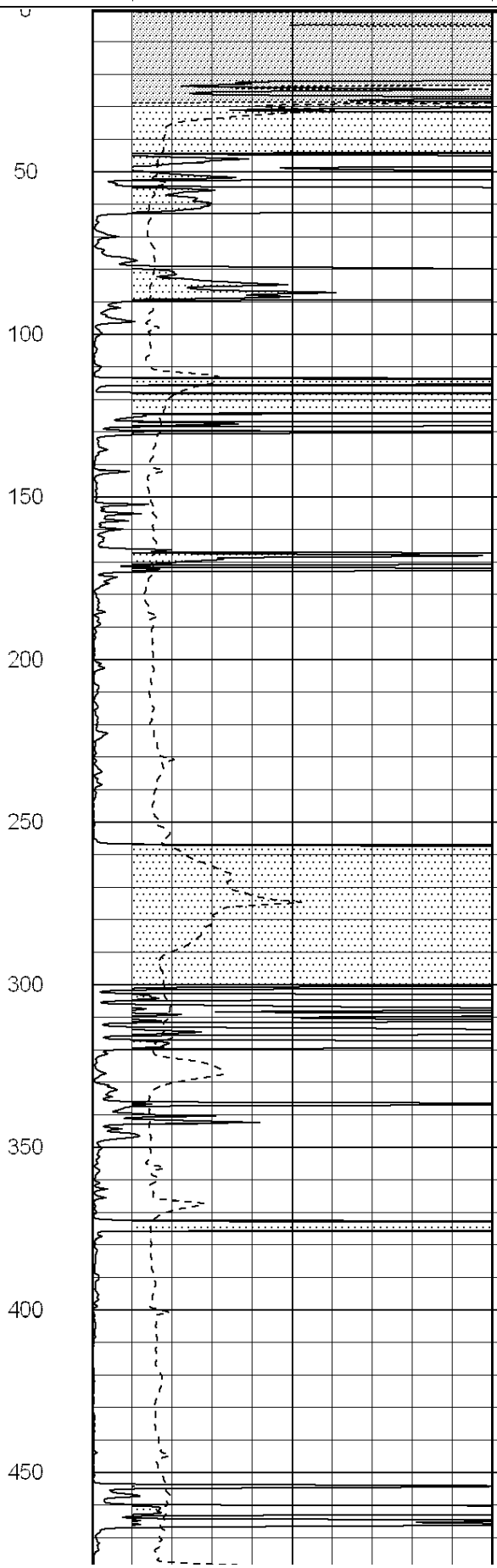
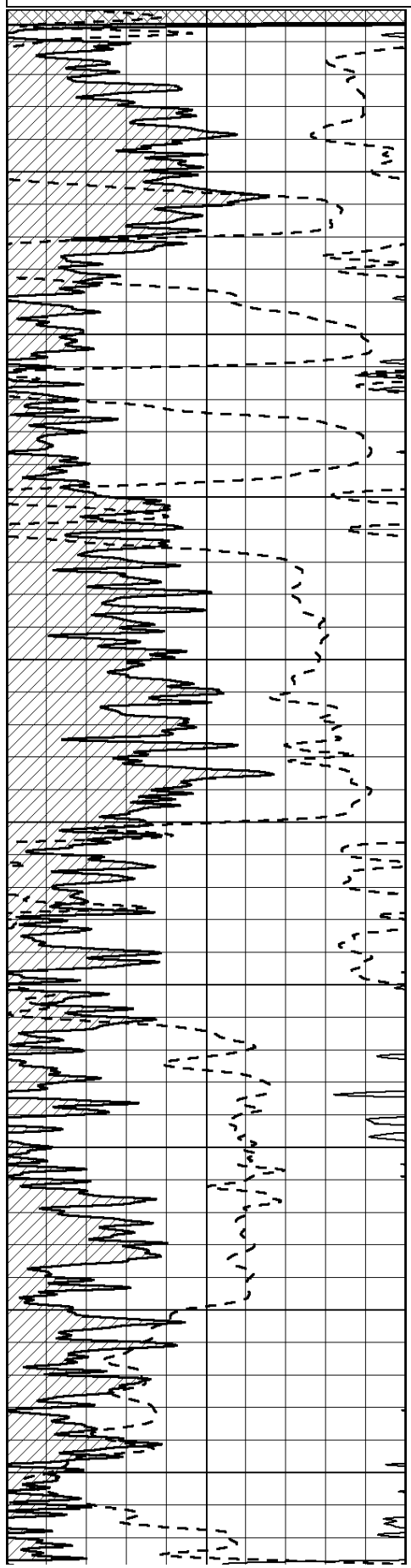
THANK YOU FOR USING SUPERIOR WELL SERVICE (785) 628-6395
DIRECTIONS
HAYS, KS - NORTH TO SALINE RIVER RD - EAST TO CODELL RD - 1 1/2 MILES EAST- NORTH INTO

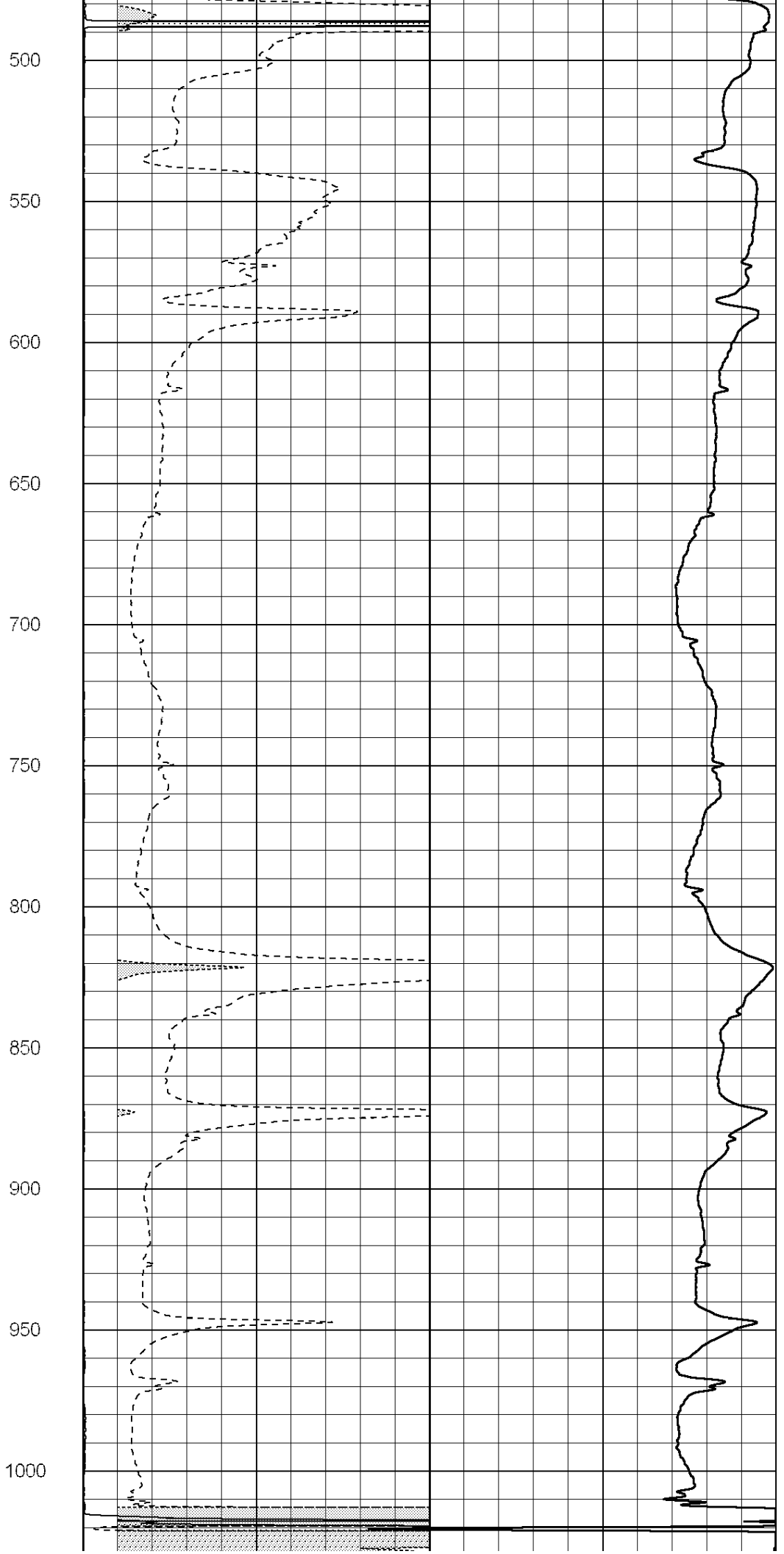
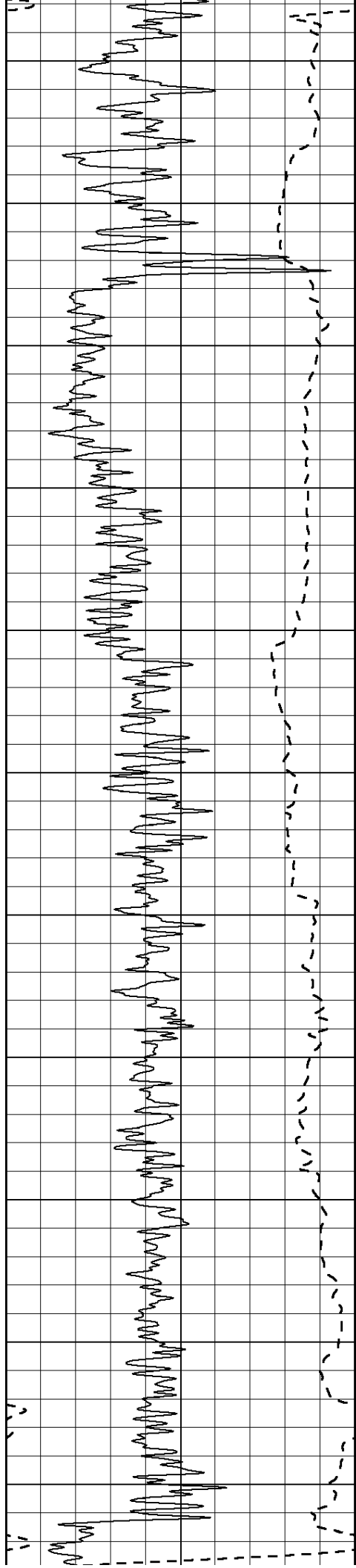
0	Gamma Ray (GAPI)	150
-100	SP (mV)	100

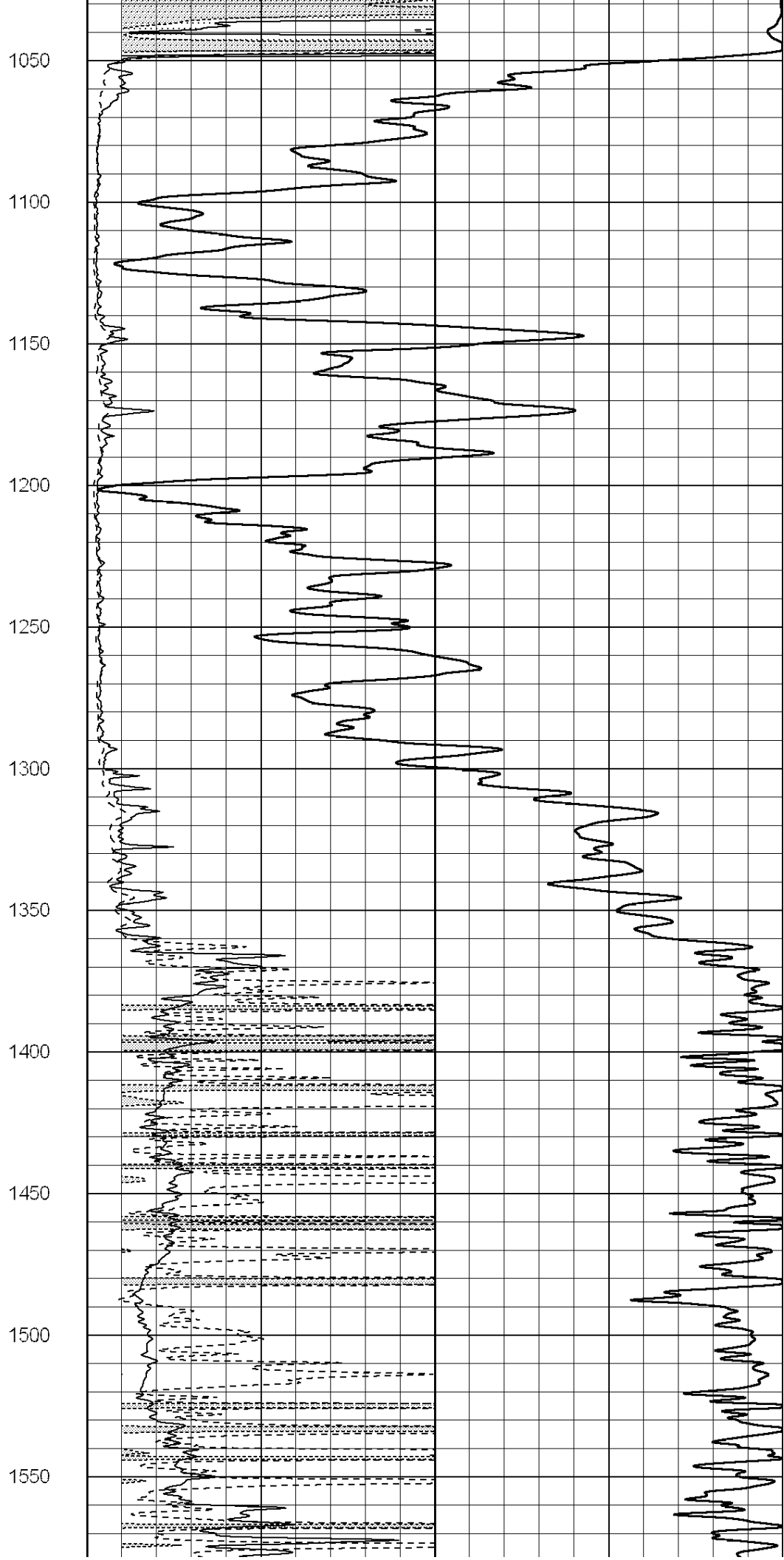
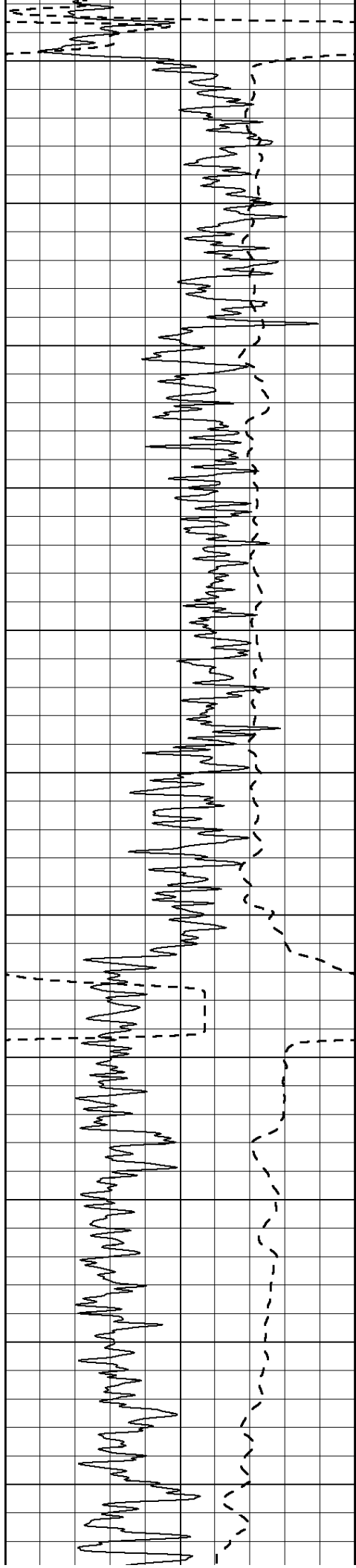
0	RLL3 (Ohm-m)	50
0	Deep Induction (Ohm-m)	50

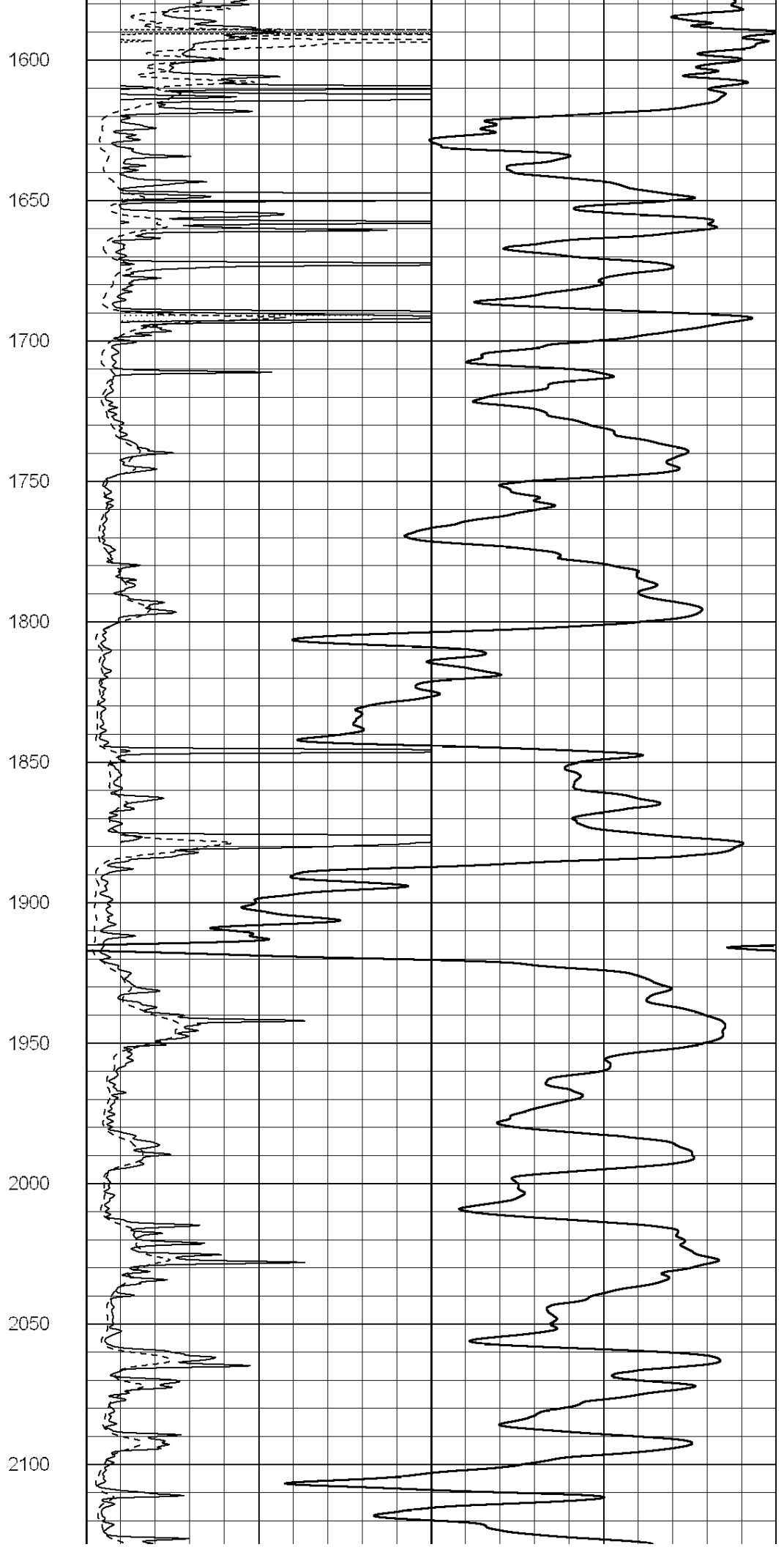
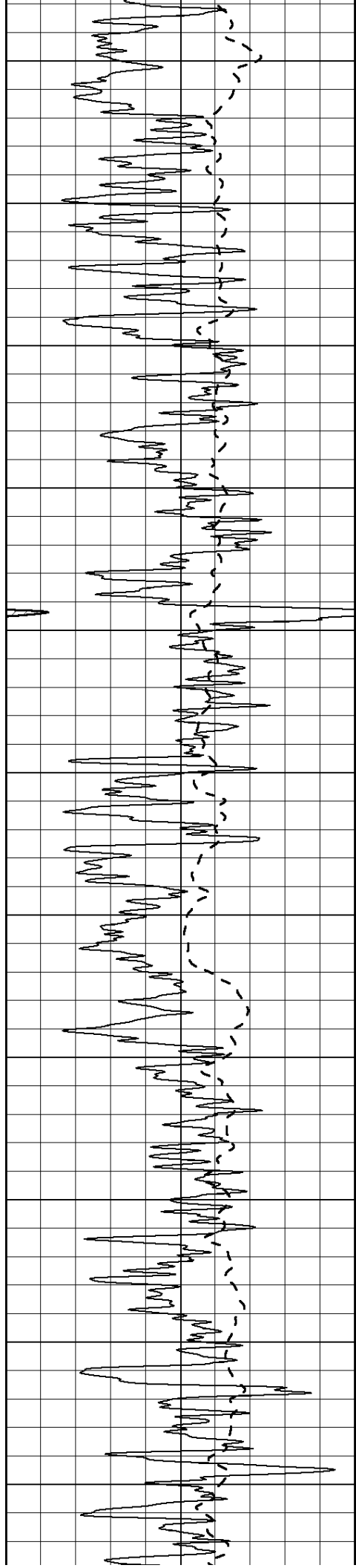
1000	CILD (mmho/m)	0
------	---------------	---

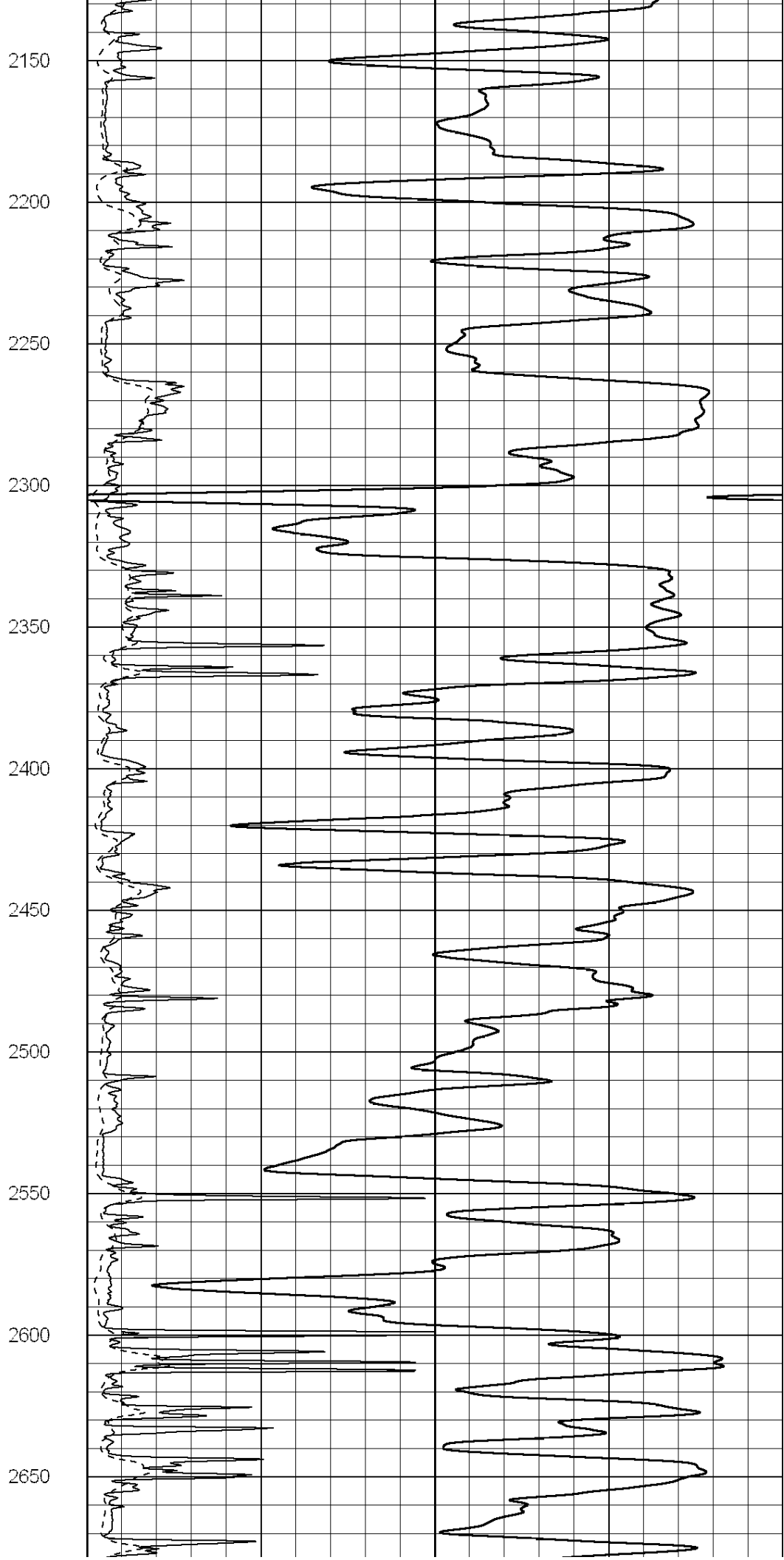
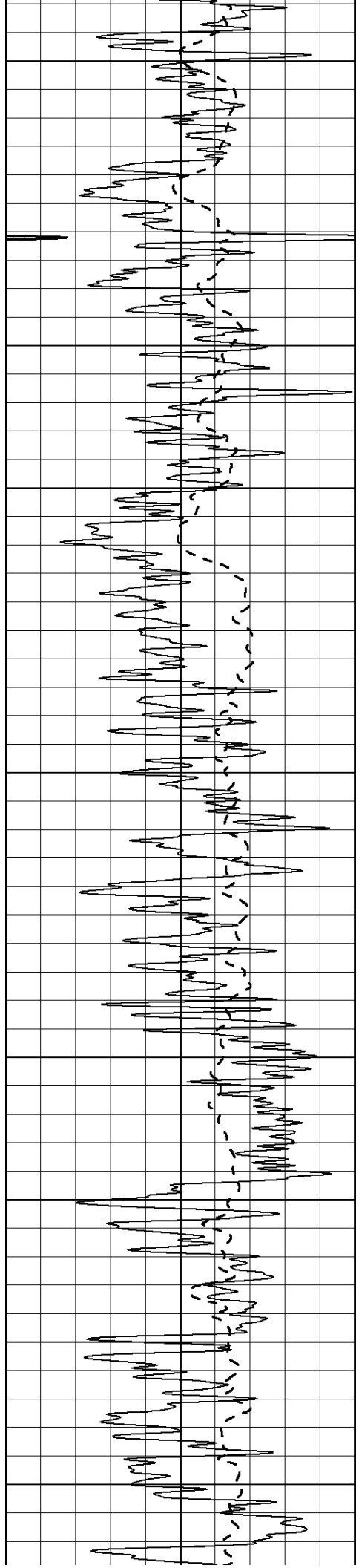
50	RILD X10 (Ohm-m)	500
50	RLL3 X10 (Ohm-m)	500

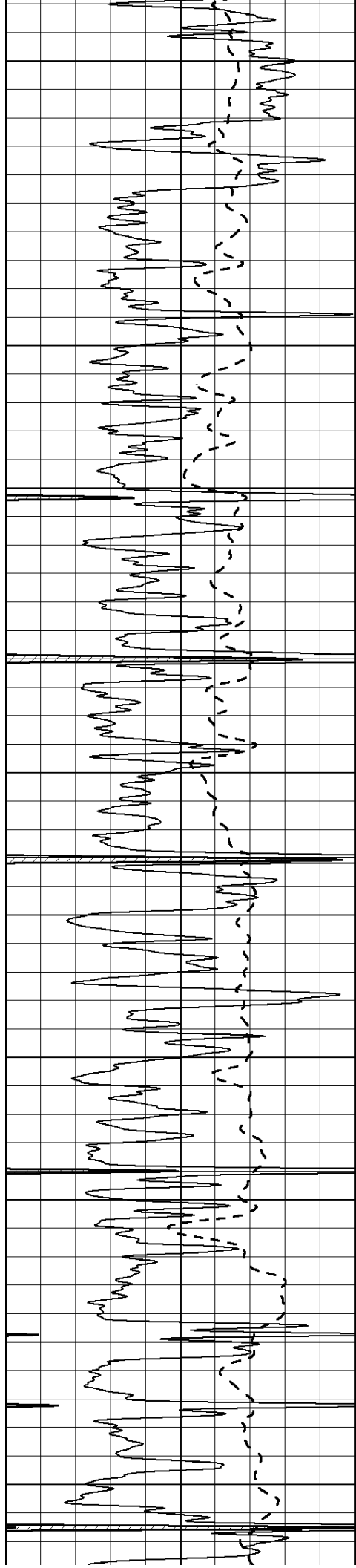












2700

2750

2800

2850

2900

2950

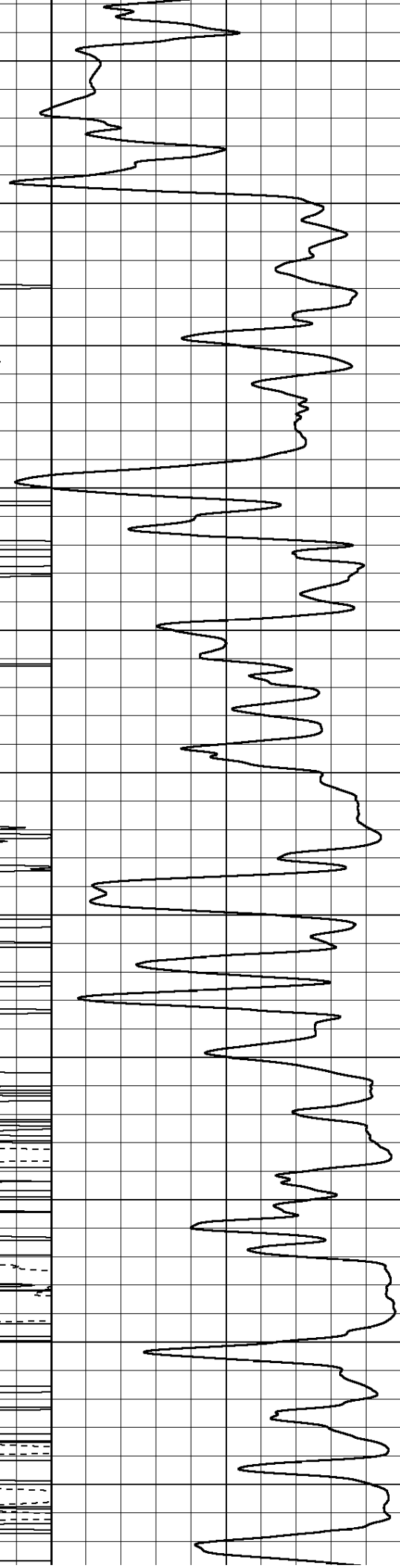
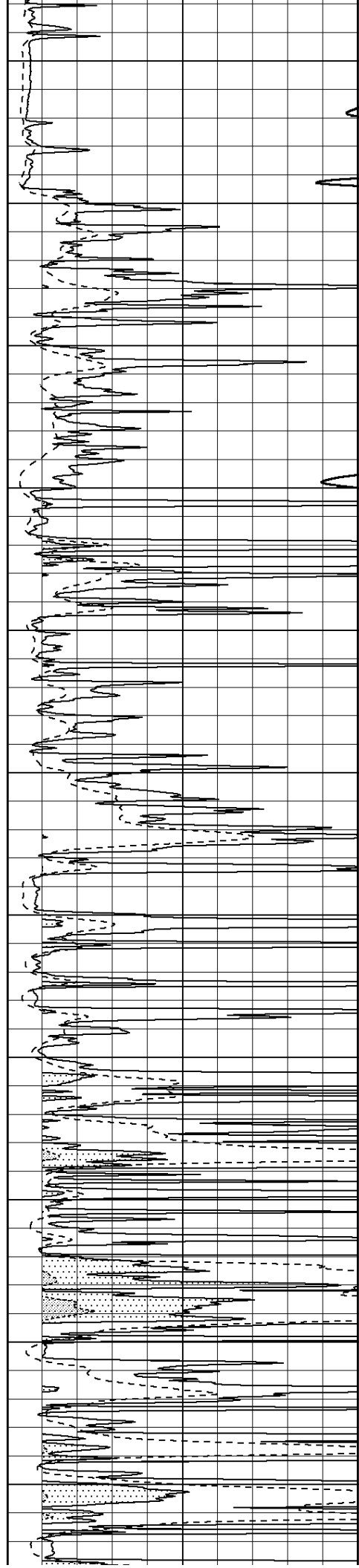
3000

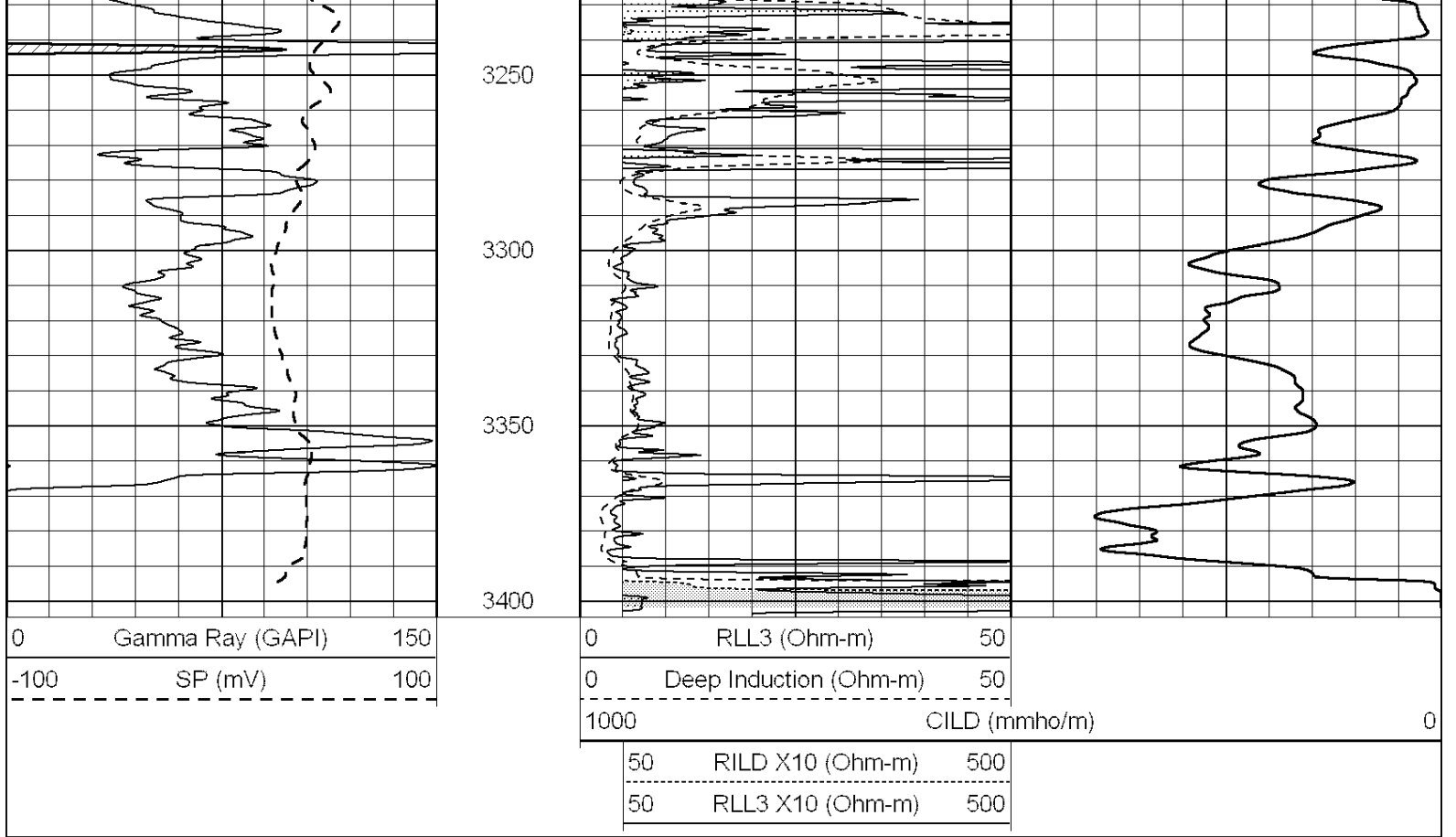
3050

3100

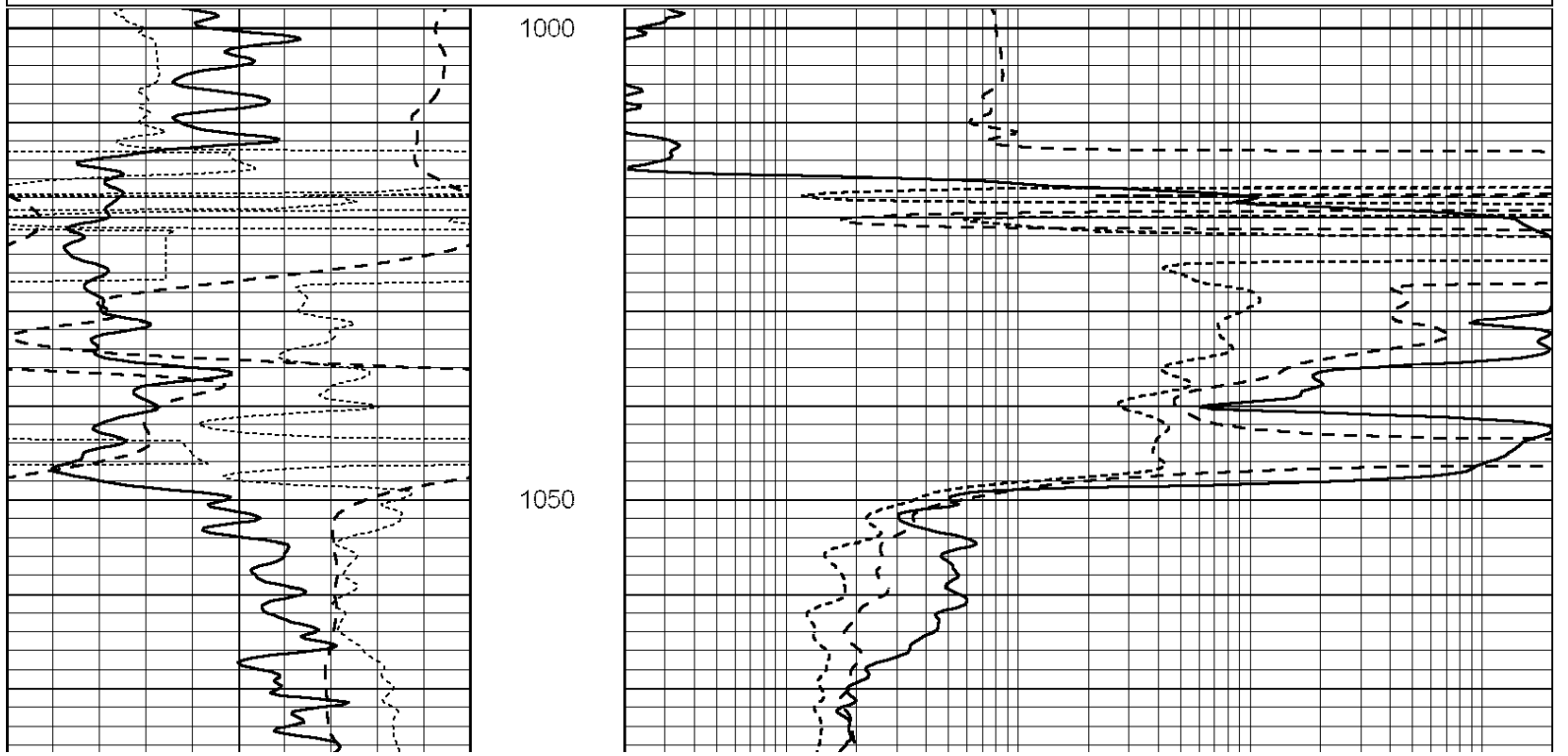
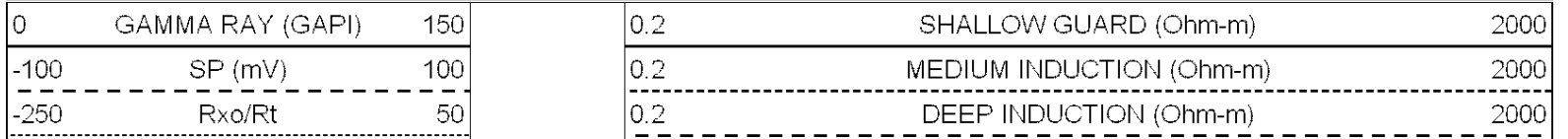
3150

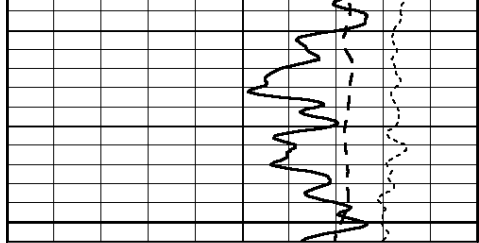
3200





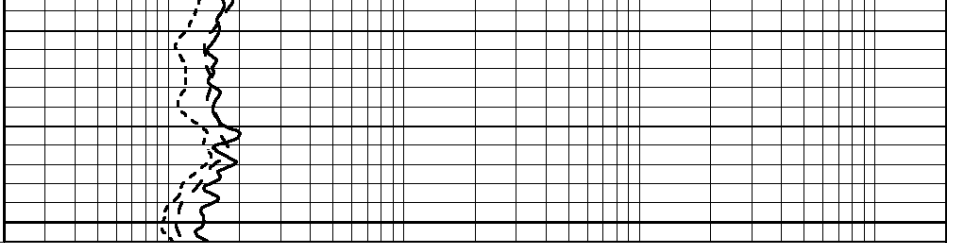
Database File: 009987ddn.db
 Dataset Pathname: pass3.2
 Presentation Format: _dil
 Dataset Creation: Mon Oct 29 15:17:37 2012 by Calc Open-Cased 090629
 Charted by: Depth in Feet scaled 1:240





1100

0	GAMMA RAY (GAPI)	150
-100	SP (mV)	100
-250	Rxo/Rt	50

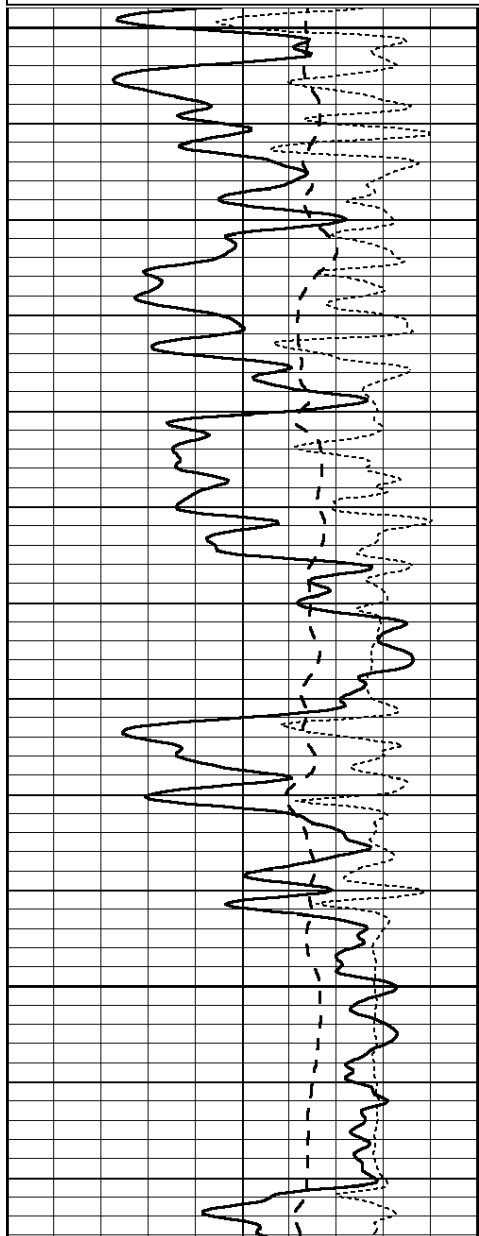


0.2	SHALLOW GUARD (Ohm-m)	2000
0.2	MEDIUM INDUCTION (Ohm-m)	2000
0.2	DEEP INDUCTION (Ohm-m)	2000

Database File: 009987ddn.db
 Dataset Pathname: pass3.1
 Presentation Format: _dil
 Dataset Creation: Mon Oct 29 14:51:13 2012 by Calc Open-Cased 090629
 Charted by: Depth in Feet scaled 1:240

0	GAMMA RAY (GAPI)	150
-100	SP (mV)	100
-250	Rxo/Rt	50

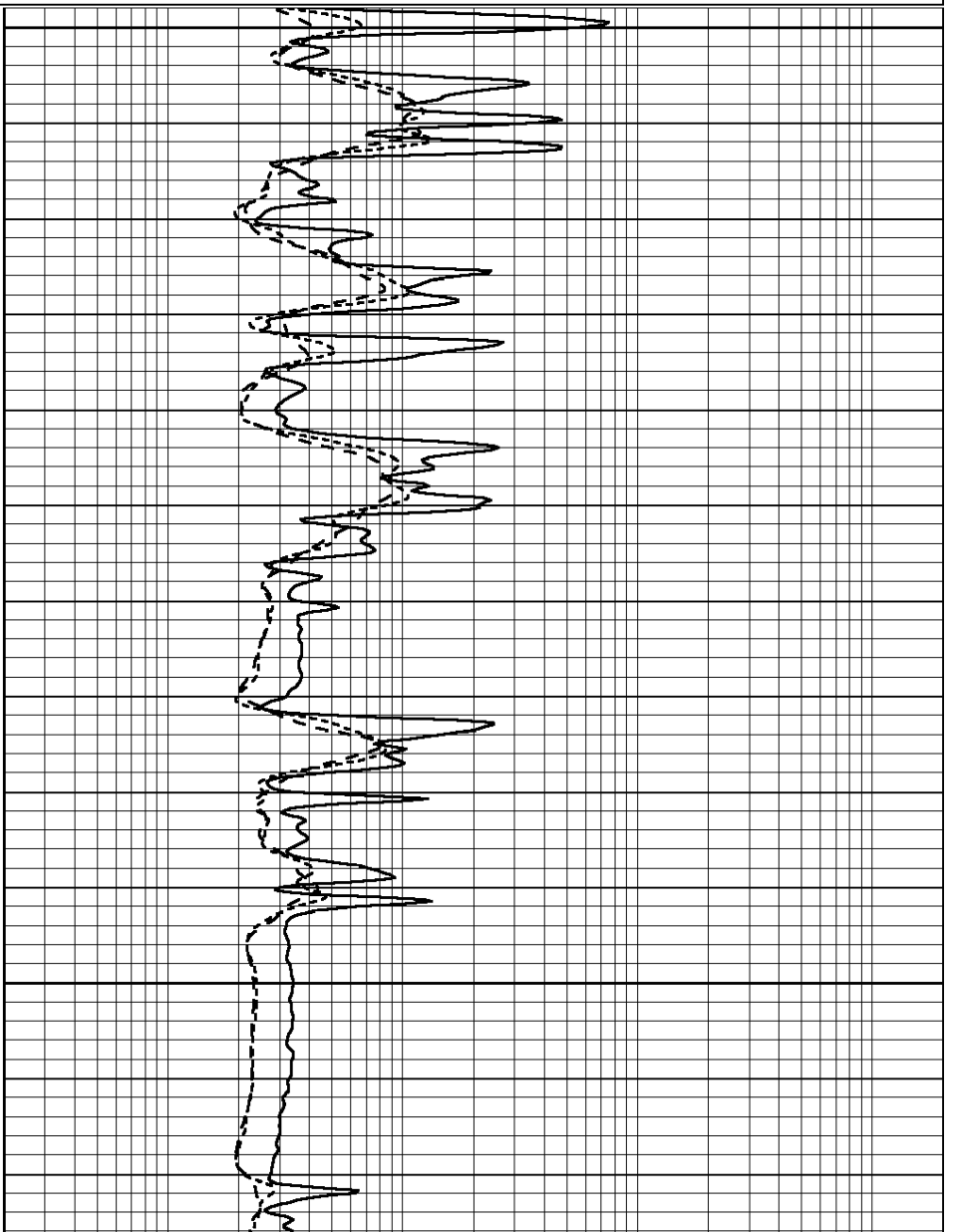
0.2	SHALLOW GUARD (Ohm-m)	2000
0.2	MEDIUM INDUCTION (Ohm-m)	2000
0.2	DEEP INDUCTION (Ohm-m)	2000

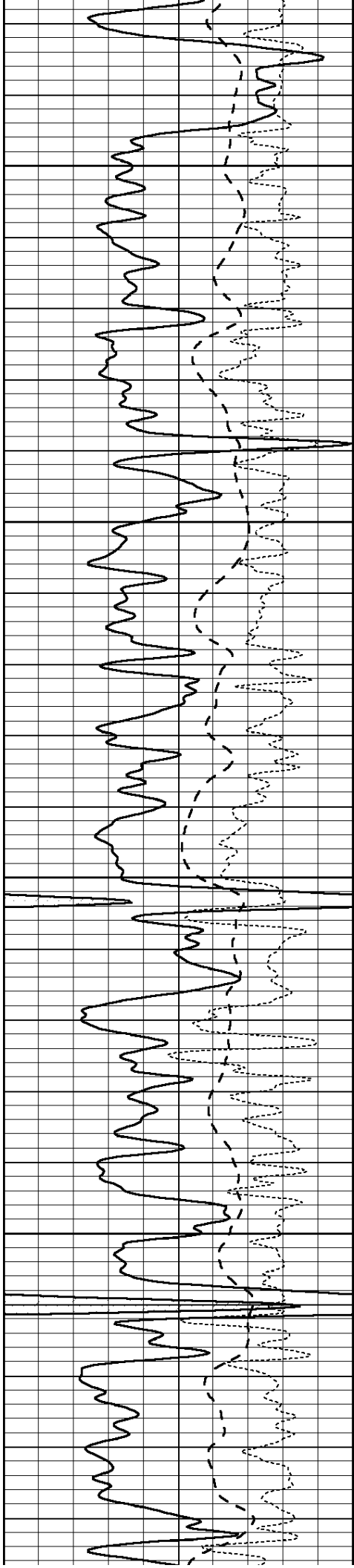


2600

2650

2700



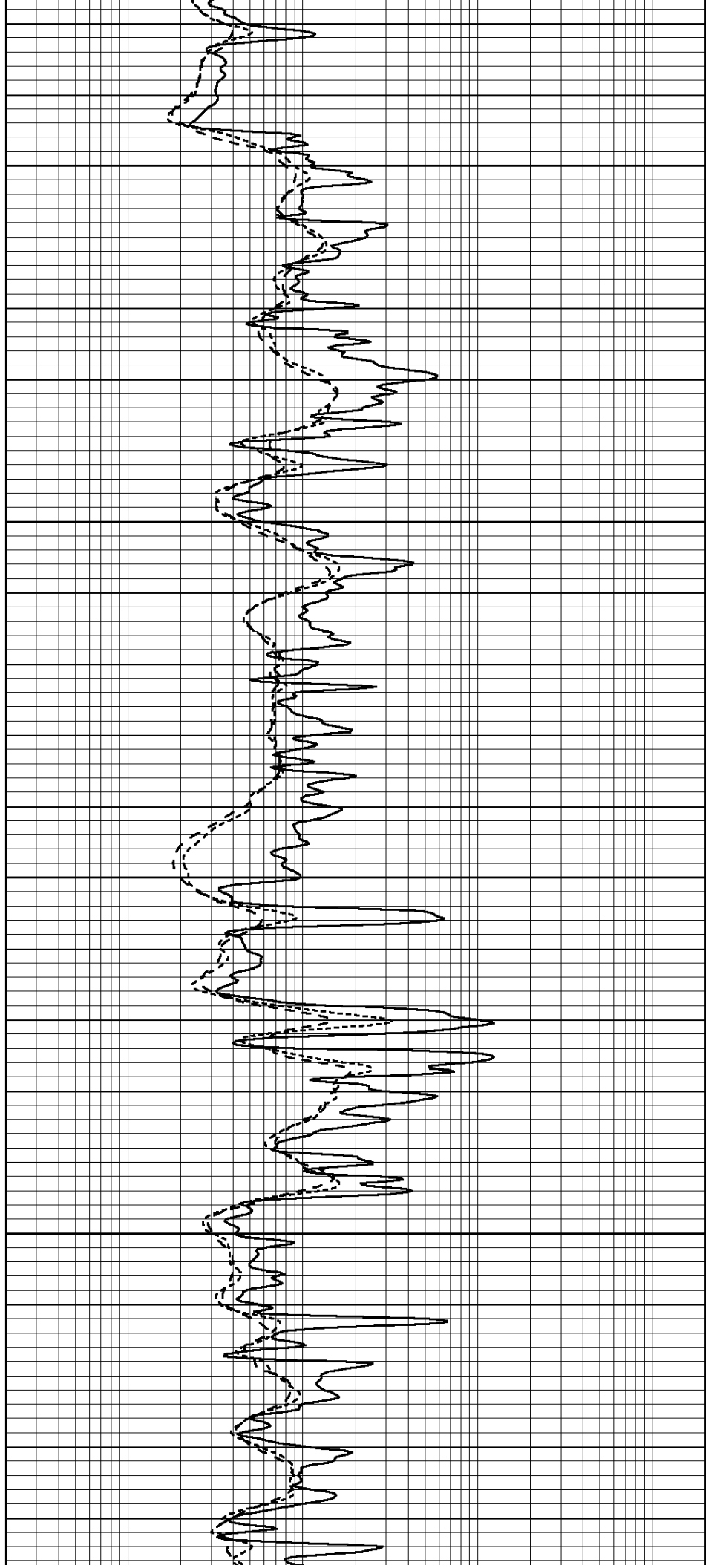


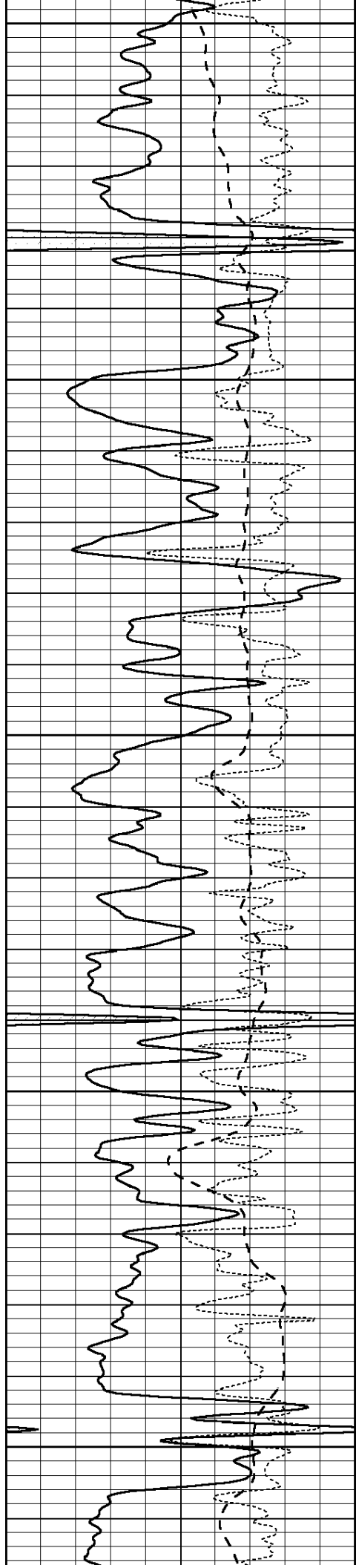
2750

2800

2850

2900





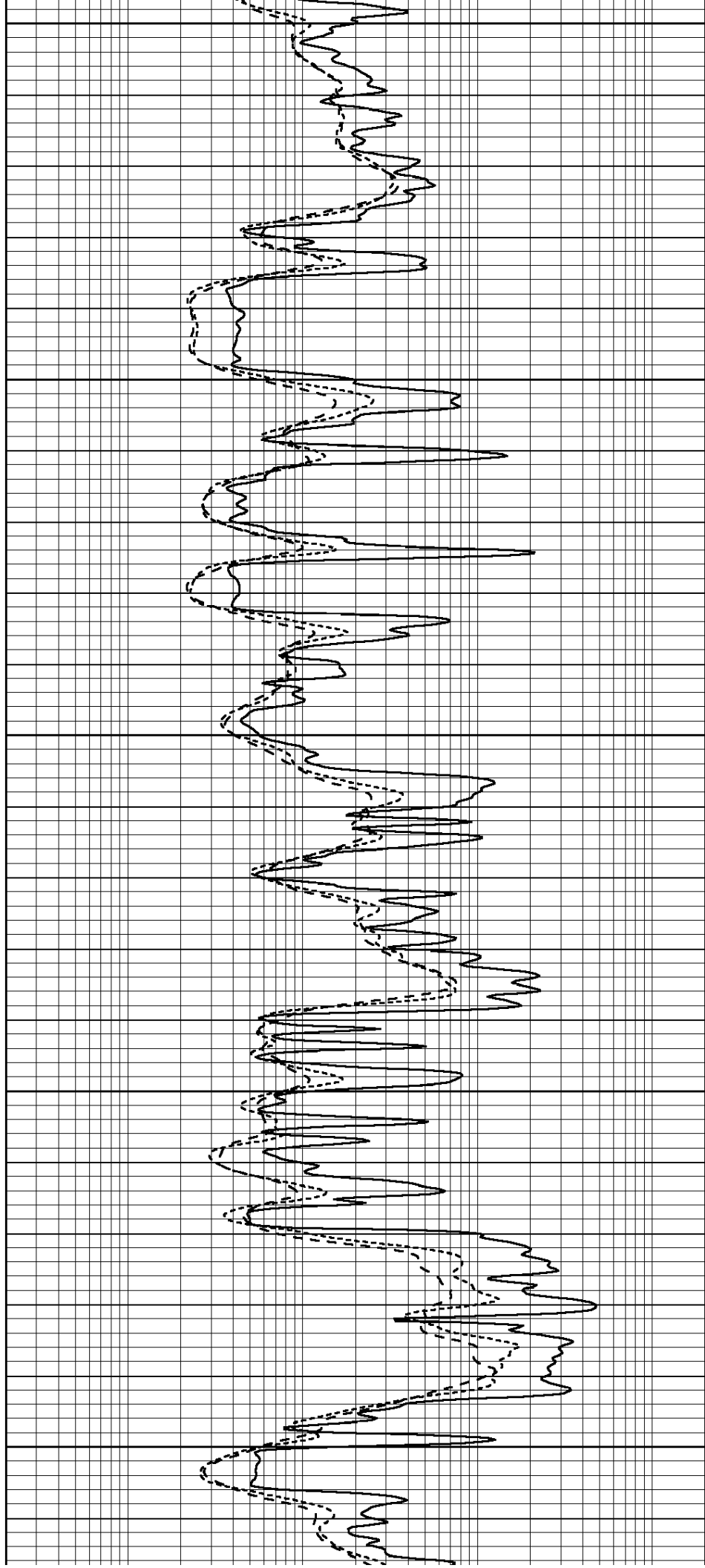
2950

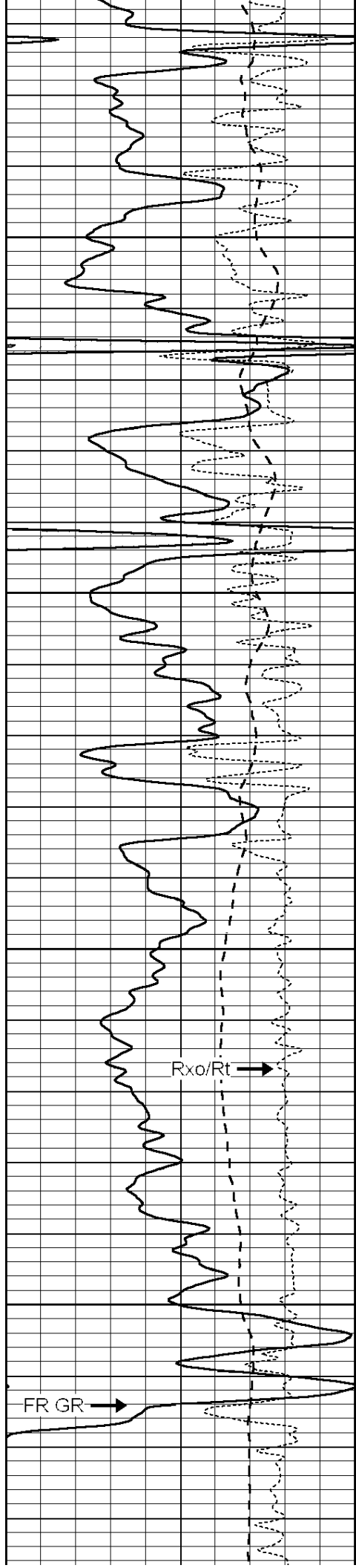
3000

3050

3100

3150



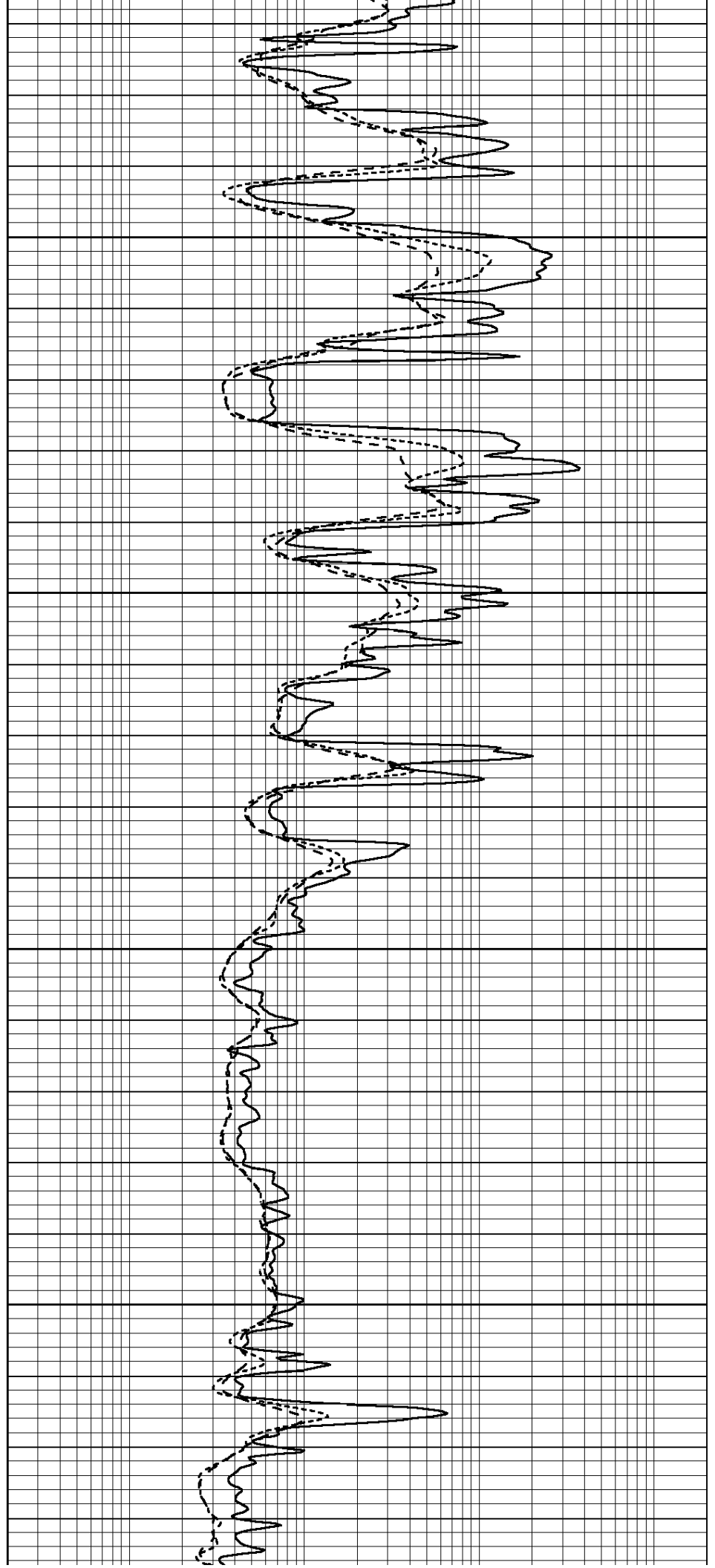


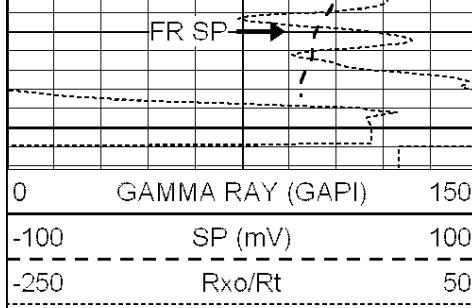
3200

3250

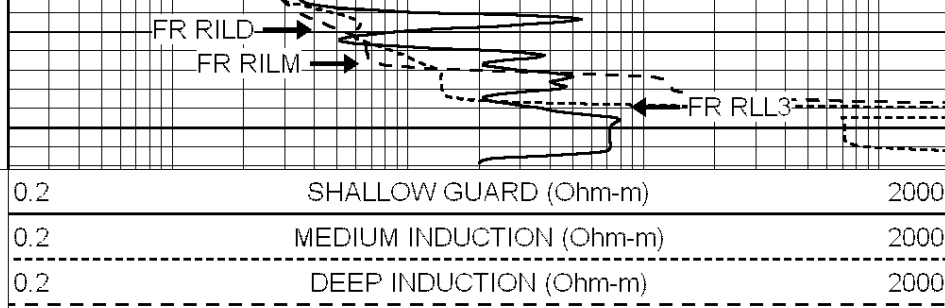
3300

3350



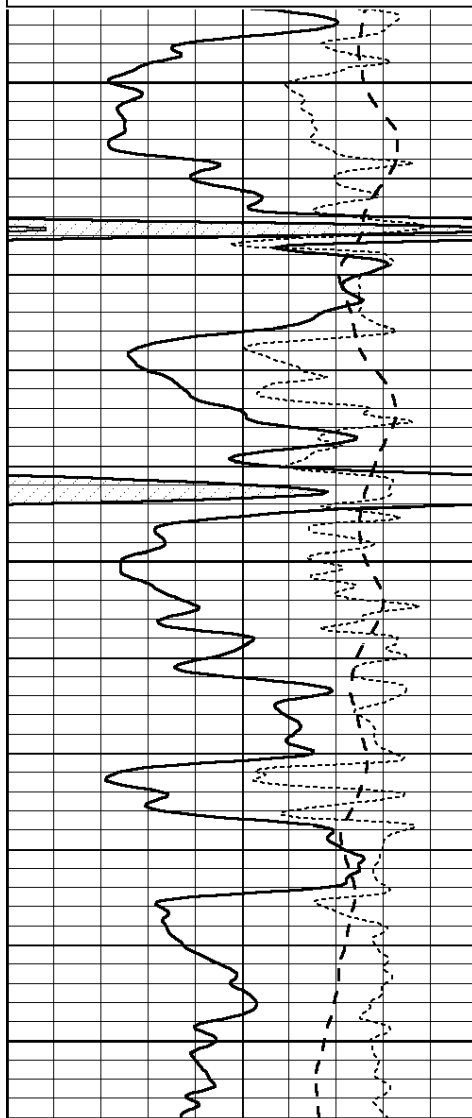
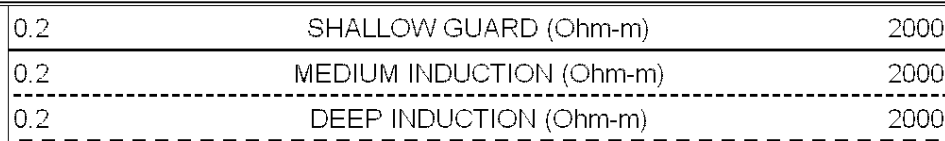
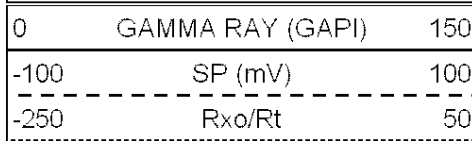


LTD 3400
3400



REPEAT SECTION

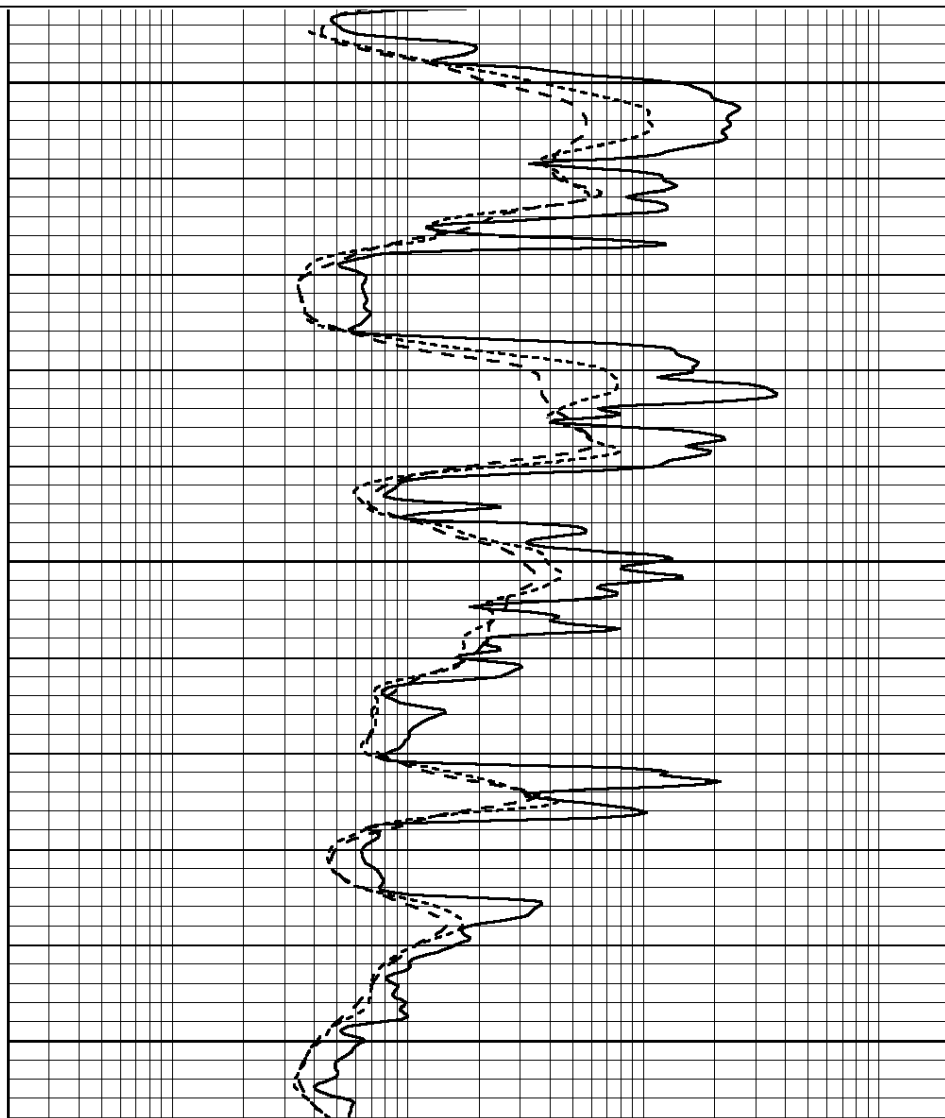
Database File: 009987ddn.db
 Dataset Pathname: pass2.3
 Presentation Format: _dil
 Dataset Creation: Mon Oct 29 14:21:18 2012 by Calc Open-Cased 090629
 Charted by: Depth in Feet scaled 1:240

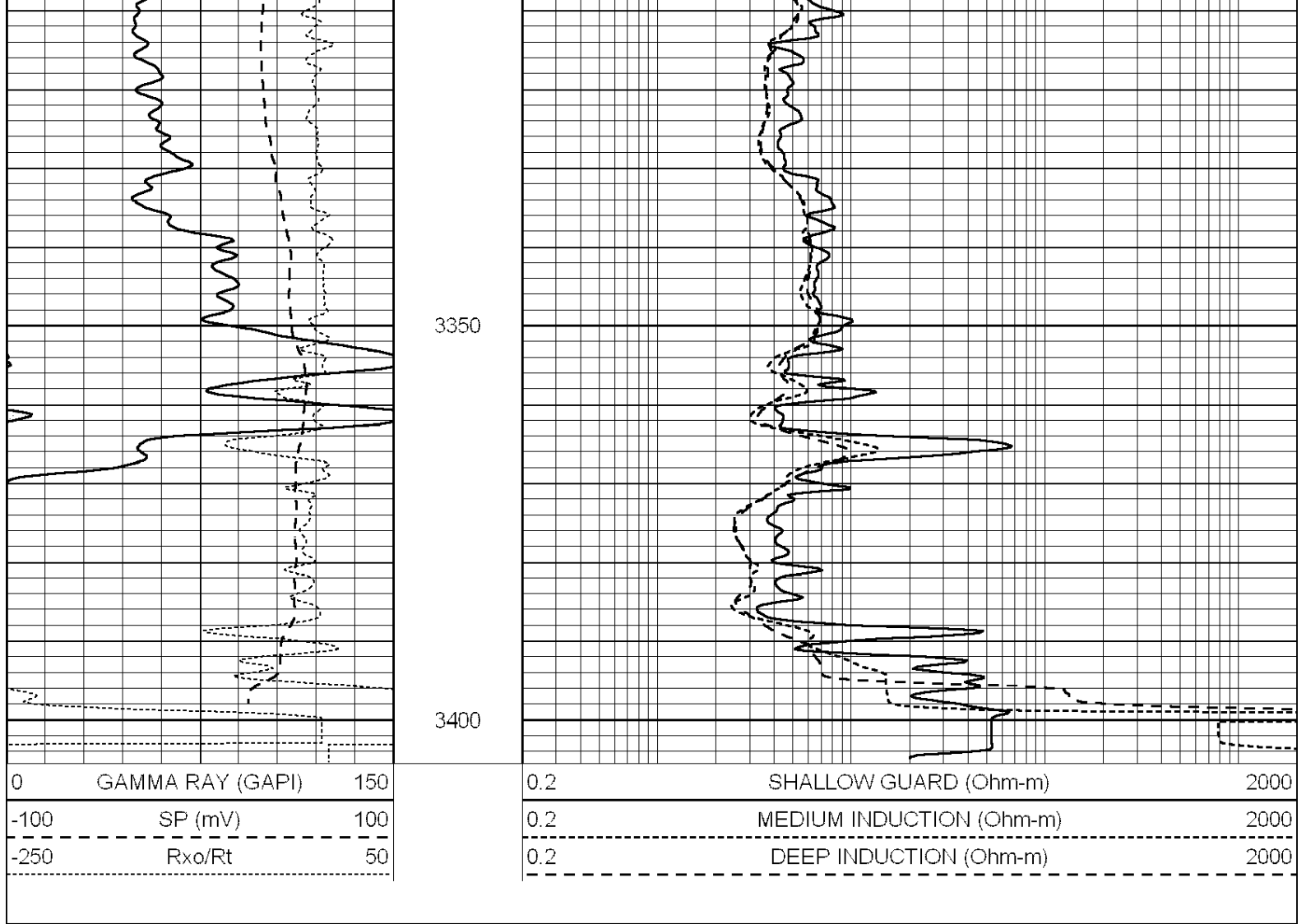


3200

3250

3300





Calibration Report

Database File: 009987ddn.db
 Dataset Pathname: pass3.2
 Dataset Creation: Mon Oct 29 15:17:37 2012 by Calc Open-Cased 090629

Dual Induction Calibration Report

Serial-Model: PROBE8-DILG
 Surface Cal Performed: Fri Aug 01 06:33:19 2008
 Downhole Cal Performed: Mon Jul 28 11:08:27 2008
 After Survey Verification Performed: Mon Jul 28 11:08:27 2008

Surface Calibration

Loop:	Readings				References		Results	
	Air	Loop	V		Air	Loop	m	b
Deep	0.015	0.648	V	0.000	400.000	mmho/m	632.616	-9.730
Medium	0.029	0.796	V	0.000	464.000	mmho/m	605.049	-17.680
Internal:	Zero	Cal		Zero	Cal		m	b
Deep	0.017	0.657	V	0.000	400.000	mmho/m	625.153	-10.619
Medium	0.016	0.757	V	0.000	464.000	mmho/m	625.992	-9.739

Downhole Calibration

	Readings				References		Results	
	Zero	Cal	V		Zero	Cal	m'	b'
Deep	0.000	0.000	V	0.000	100.000	mmho/m	1.000	0.000
Medium	0.000	0.000	V	0.000	100.000	mmho/m	1.000	0.000

Deep	0.000	0.000	mmho/m	2.011	405.777	mmho/m	1.000	0.000
Medium	0.000	0.000	mmho/m	7.590	503.393	mmho/m	1.000	0.000
LL3		7.500	V		1500.000	Ohm-m		
		0.000	V		20.000	Ohm-m		
		-7.200	V		3800.000	mmho-m		

After Survey Verification								
	Readings			Targets			Results	
	Zero	Cal		Zero	Cal		m'	b'
Deep	0.000	0.000	mmho/m	0.000	0.000	mmho/m	0.000	0.000
Medium	0.000	0.000	mmho/m	0.000	0.000	mmho/m	0.000	0.000
LL3		1.000	Ohm-m		1.000	Ohm-m		
		0.000	Ohm-m		0.000	Ohm-m		
		1.000	mmho-m		1.000	mmho-m		

Compensated Density Calibration Report

Serial-Model:	GEAR4-GEARHART
Source / Verifier:	143 / 143
Master Calibration Performed:	Mon Mar 19 19:07:19 2012

Master Calibration					
	Density		Far Detector	Near Detector	
	Magnesium	1.710	g/cc	1015.91	497.51
Aluminum	2.600	g/cc	227.67	350.20	cps
Spine Angle = 76.79			Density/Spine Ratio = 0.579		
	Size		Reading		
Small Ring	8.00	in	3.21	V	
Large Ring	14.00	in	5.46	V	

Compensated Neutron Calibration Report

Serial Number:	6I
Tool Model:	G

CALIBRATION						
Detector	Readings		Target	Normalization		
Short Space	1.00	cps	1.00	cps	1.0000	
Long Space	1.00	cps	1.00	cps	1.0000	

Gamma Ray Calibration Report

Serial Number:	#8	
Tool Model:	OPEN	
Performed:	Mon Jun 13 16:56:43 2011	
Calibrator Value:	150.0	GAPI
Background Reading:	0.0	cps
Calibrator Reading:	175.0	cps
Sensitivity:	0.8371	GAPI/cps