



**COMPLETION
& PRODUCTION
SERVICES CO.**

**COMPENSATED
DENSITY/NEUTRON
LOG**

Company	OIL COMPANY OF AMERICA, INC.	
Well	SLIMMER #6	
Field	BEMIS-SHUTTS	
County	ELLIS	State KANSAS
Location:	API # : 15-051-26336-00-00 SW - NE - SW 1650' FSL & 3580' FEL	Other Services DIL
Permanent Datum	GROUND LEVEL	Elevation 1817
Log Measured From	KELLY BUSHING 7' A.G.L.	K.B. 1824
Drilling Measured From	KELLY BUSHING	D.F. 1822
		G.L. 1817

Date	10/29/12
Run Number	ONE
Depth Driller	3400
Depth Logger	3400
Bottom Logged Interval	3376
Top Log Interval	2600
Casing Driller	8 5/8" @ 1017
Casing Logger	1016
Bit Size	7 7/8
Type Fluid in Hole	CHEMICAL MUD
Density / Viscosity	9.3/53
pH / Fluid Loss	9.0/9.6
Source of Sample	FLOWLINE
Rim @ Meas. Temp	0.60@75F
Rmf @ Meas. Temp	0.45@75F
Rmc @ Meas. Temp	0.72@75F
Source of Rmf / Rmc	MEASURED
Rim @ BHT	0.41@110F
Time Circulation Stopped	2 HOURS
Time Logger on Bottom	
Maximum Recorded Temperature	110F
Equipment Number	680
Location	HAYS, KS.
Recorded By	IAN MABB
Witnessed By	ROGER MOSES

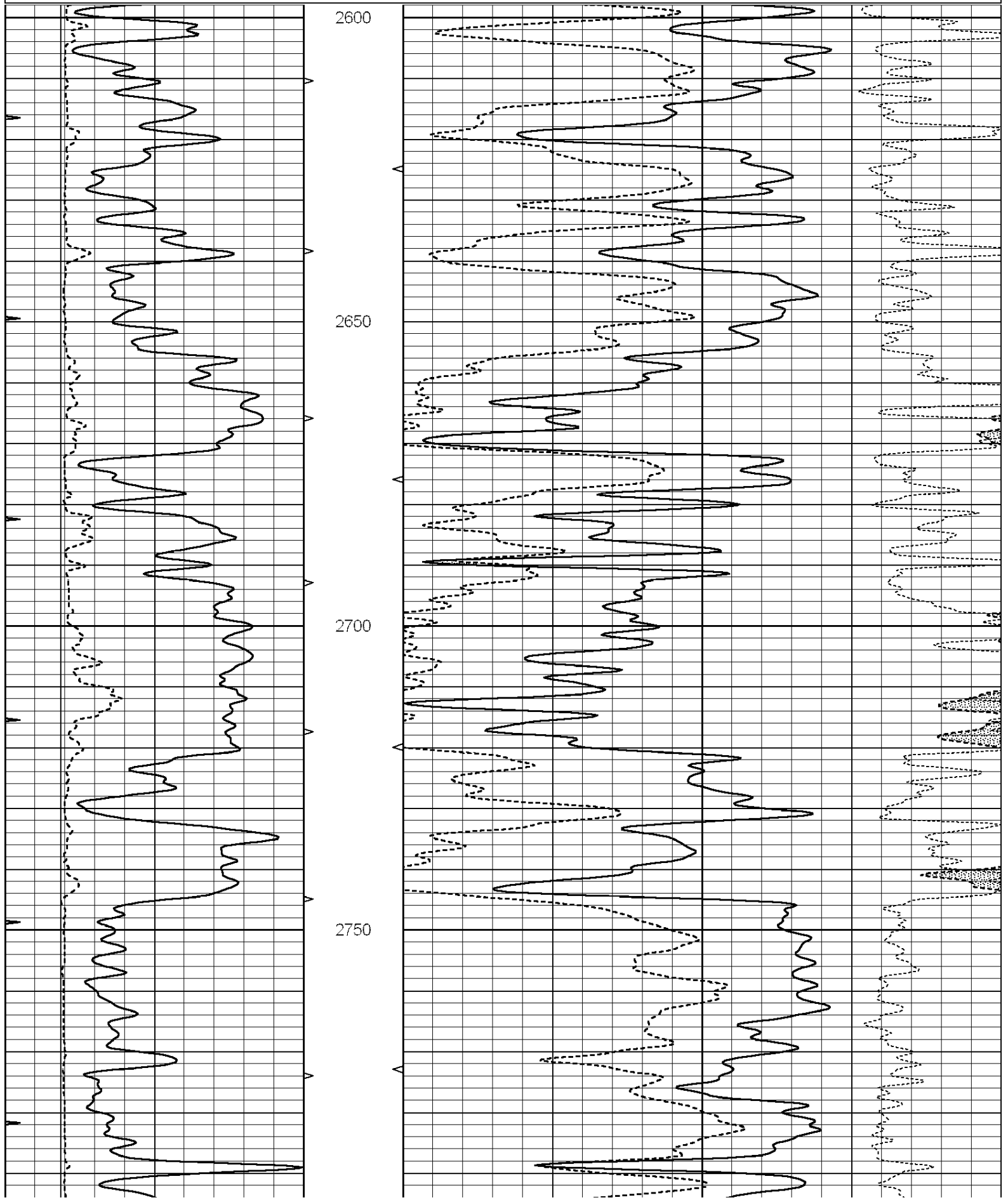
<<< Fold Here >>>

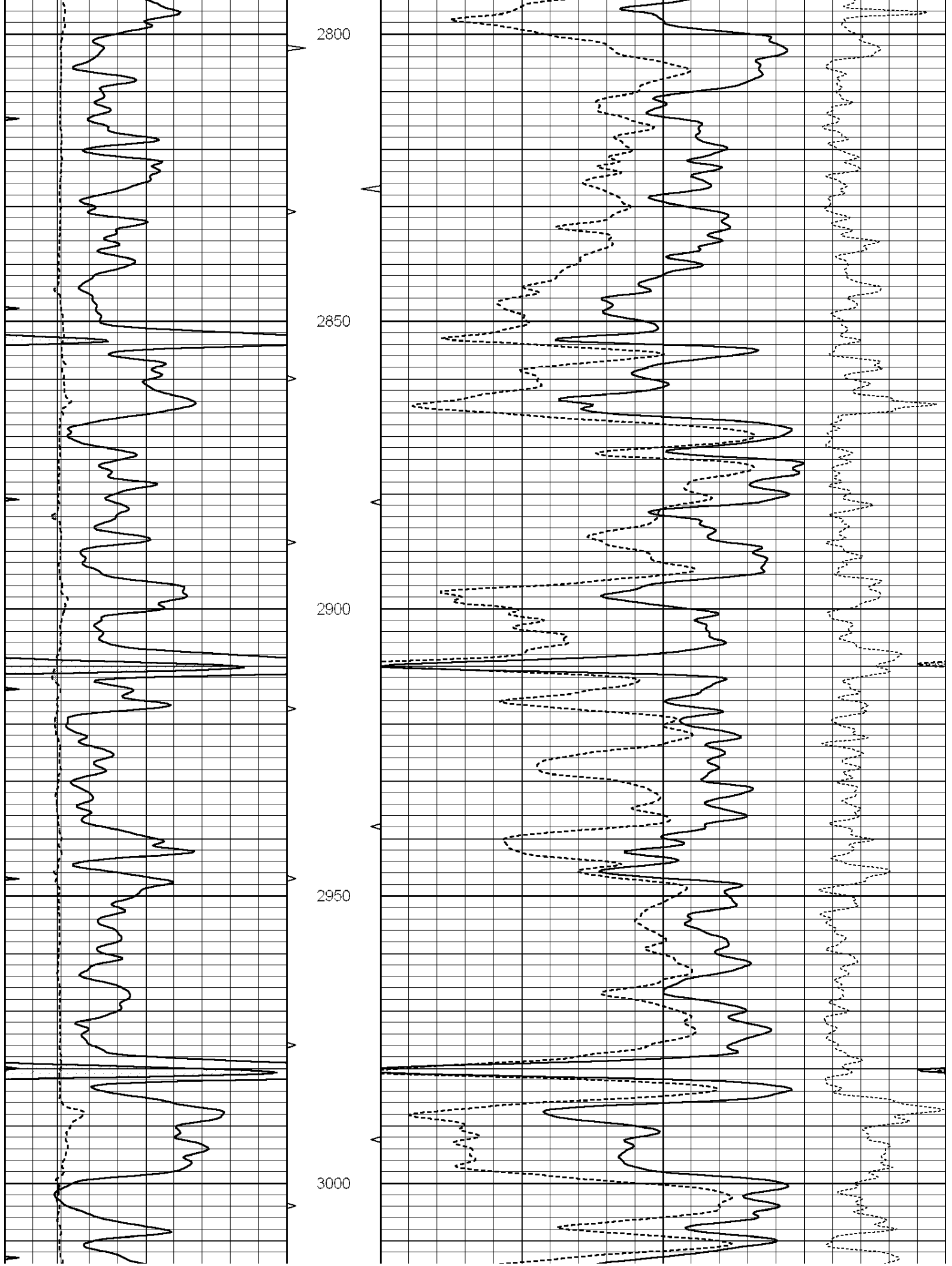
All interpretations are opinions based on inferences from electrical or other measurements and we cannot and do not guarantee the accuracy or correctness of any interpretation, and we shall not, except in the case of gross or willful negligence on our part, be liable or responsible for any loss, costs, damages, or expenses incurred or sustained by anyone resulting from any interpretation made by any of our officers, agents or employees. These interpretations are also subject to our general terms and conditions set out in our current Price Schedule.

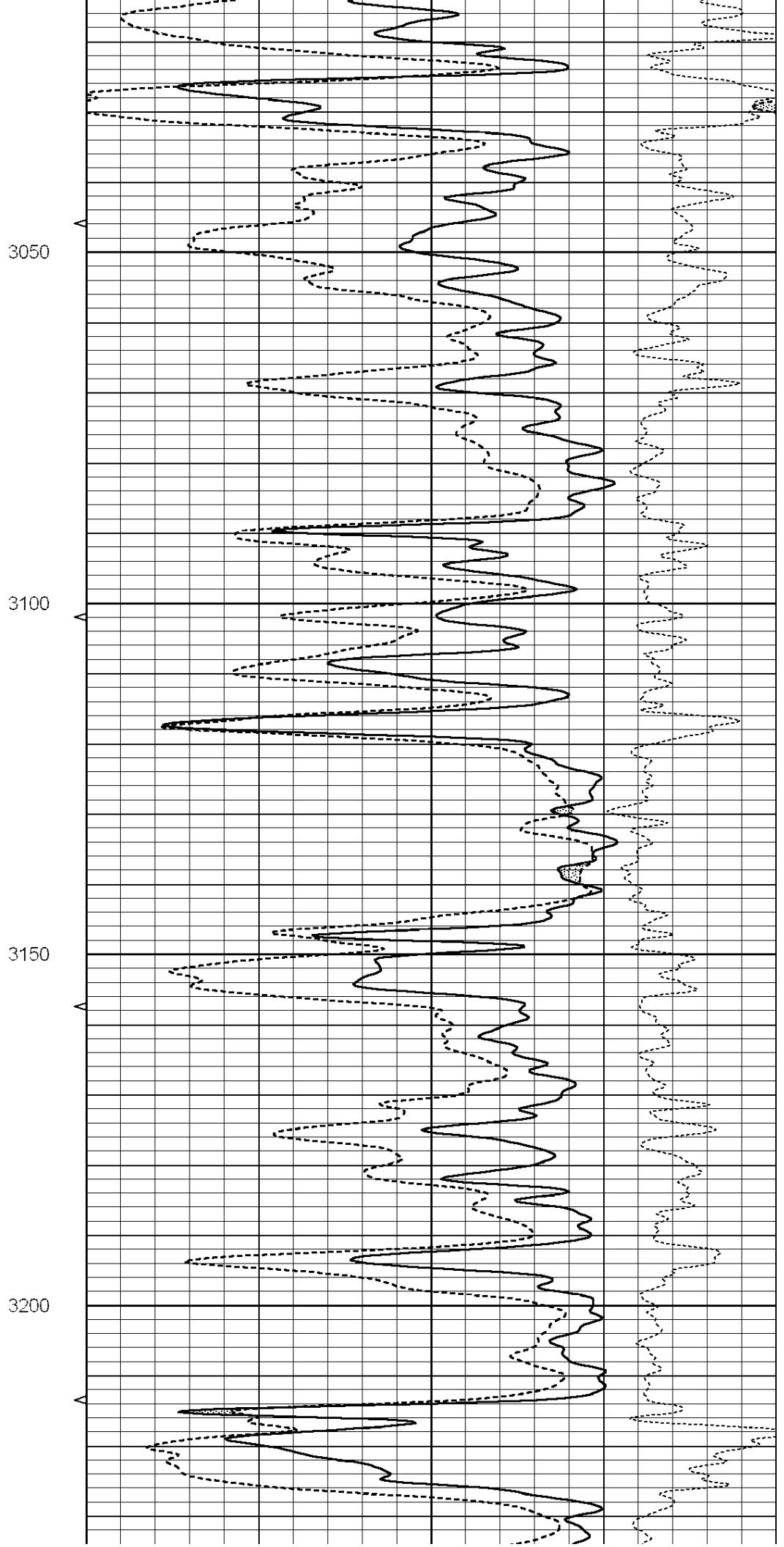
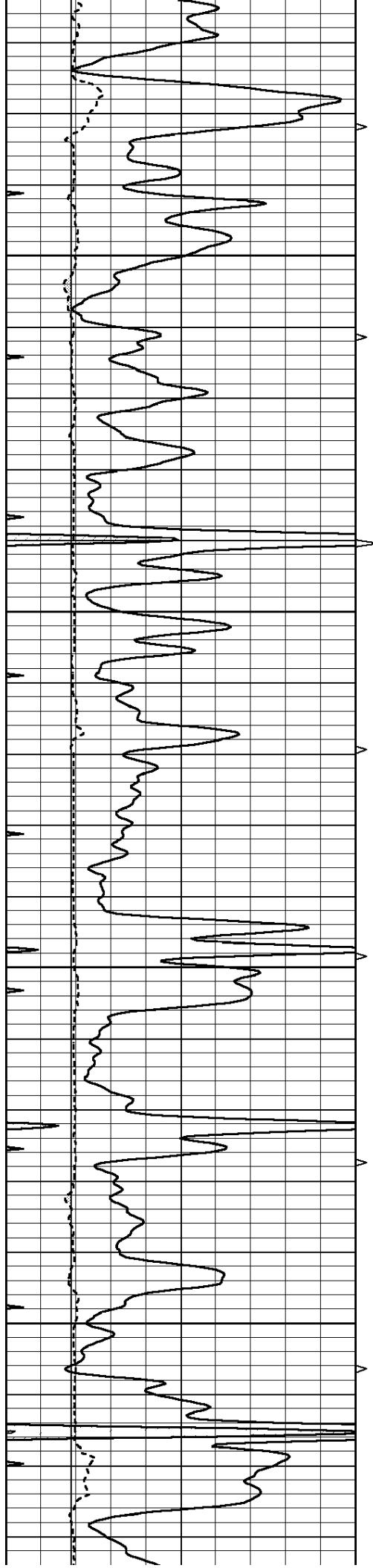
Comments

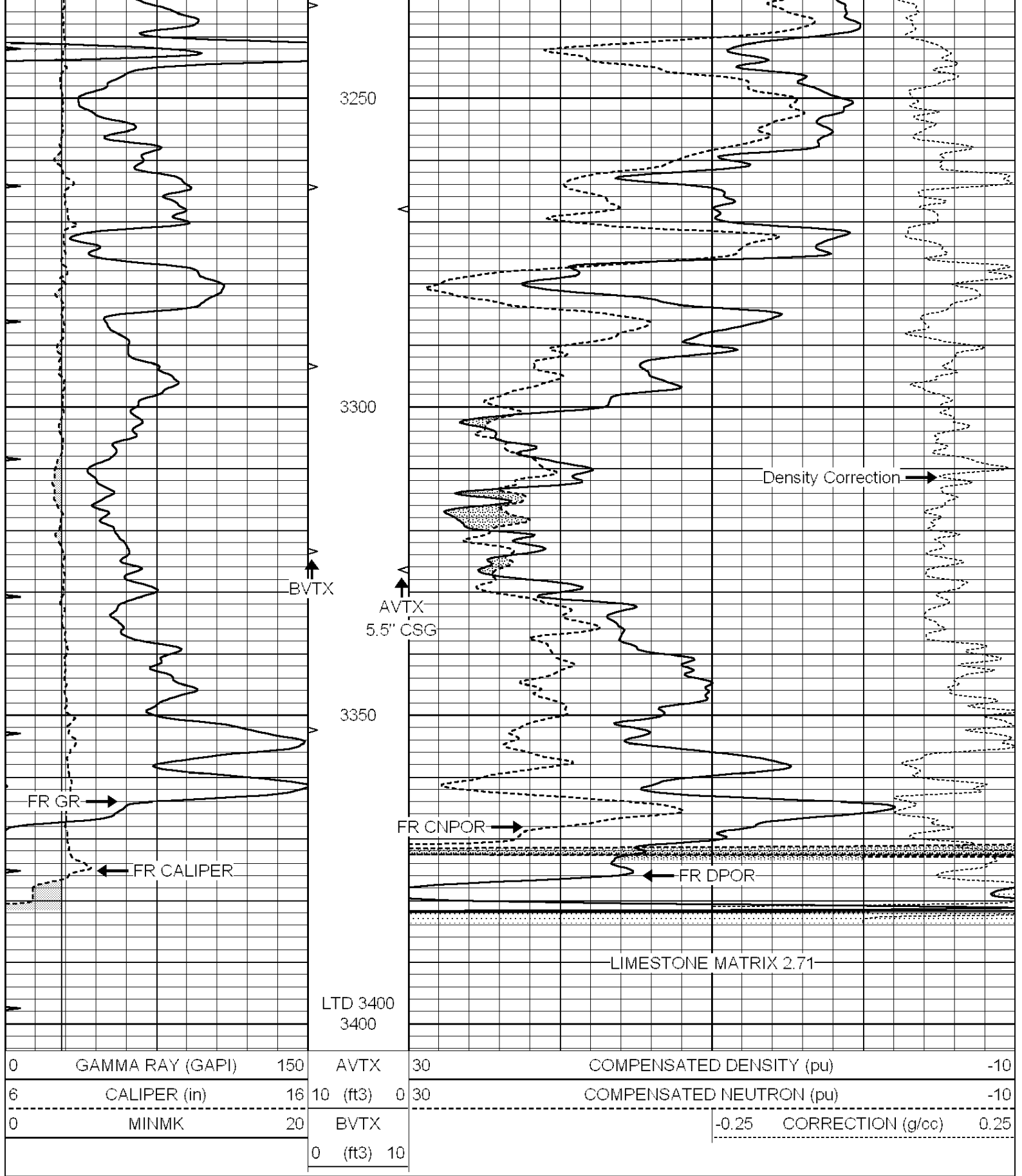
THANK YOU FOR USING SUPERIOR WELL SERVICE (785) 628-6395
DIRECTIONS
HAYS, KS - NORTH TO SALINE RIVER RD - EAST TO CODELL RD - 1 1/2 MILES EAST- NORTH INTO

0	GAMMA RAY (GAPI)	150	AVTX	30	COMPENSATED DENSITY (pu)	-10
6	CALIPER (in)	16	10 (ft3)	0 30	COMPENSATED NEUTRON (pu)	-10
0	MINMK	20	BVTX		-0.25 CORRECTION (g/cc)	0.25
			0 (ft3)	10		



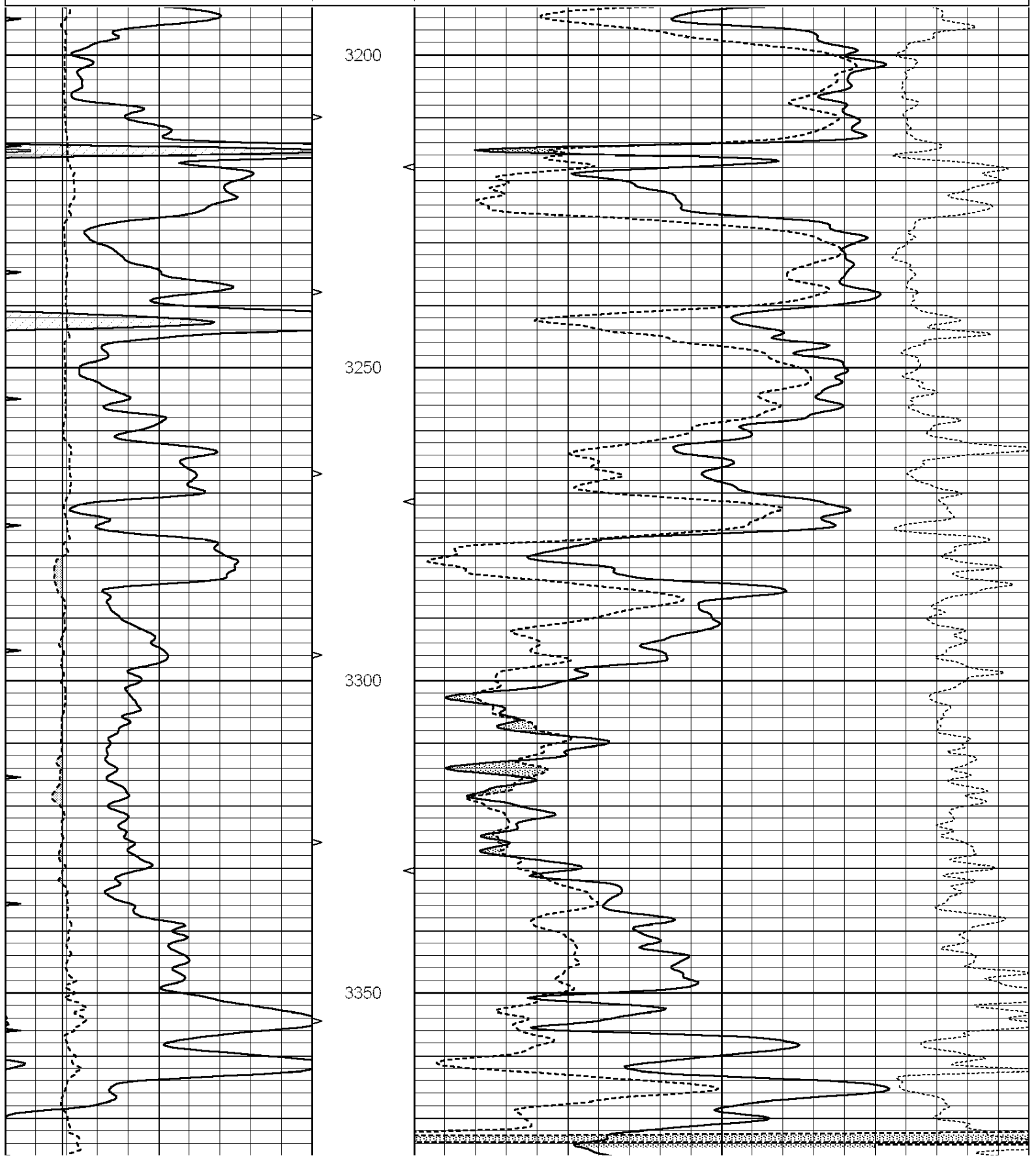






Dataset Pathname: pass2.3
 Presentation Format: _den_neu
 Dataset Creation: Mon Oct 29 14:21:18 2012 by Calc Open-Cased 090629
 Charted by: Depth in Feet scaled 1:240

0	GAMMA RAY (GAPI)	150	AVTX	30	COMPENSATED DENSITY (pu)	-10	
6	CALIPER (in)	16	10 (ft3)	0	30	COMPENSATED NEUTRON (pu)	-10
0	MINMK	20	BVTX		-0.25	CORRECTION (g/cc)	0.25
			0 (ft3)	10			



		3400			
0	GAMMA RAY (GAPI)	150	AVTX	30	COMPENSATED DENSITY (pu) -10
6	CALIPER (in)	16	10 (ft3) 0	30	COMPENSATED NEUTRON (pu) -10
0	MINMK	20	BVTX		-0.25 CORRECTION (g/cc) 0.25
			0 (ft3) 10		

Calibration Report

Database File: 009987ddn.db
 Dataset Pathname: pass3.1
 Dataset Creation: Mon Oct 29 14:51:13 2012 by Calc Open-Cased 090629

Dual Induction Calibration Report

Serial-Model: PROBE8-DILG
 Surface Cal Performed: Fri Aug 01 06:33:19 2008
 Downhole Cal Performed: Mon Jul 28 11:08:27 2008
 After Survey Verification Performed: Mon Jul 28 11:08:27 2008

Surface Calibration

		Readings			References			Results	
Loop:	Air	Loop		Air	Loop		m	b	
Deep	0.015	0.648	V	0.000	400.000	mmho/m	632.616	-9.730	
Medium	0.029	0.796	V	0.000	464.000	mmho/m	605.049	-17.680	
Internal:	Zero	Cal		Zero	Cal		m	b	
Deep	0.017	0.657	V	0.000	400.000	mmho/m	625.153	-10.619	
Medium	0.016	0.757	V	0.000	464.000	mmho/m	625.992	-9.739	

Downhole Calibration

		Readings			References			Results	
	Zero	Cal		Zero	Cal		m'	b'	
Deep	0.000	0.000	mmho/m	2.011	405.777	mmho/m	1.000	0.000	
Medium	0.000	0.000	mmho/m	7.590	503.393	mmho/m	1.000	0.000	
LL3		7.500	V		1500.000	Ohm-m			
		0.000	V		20.000	Ohm-m			
		-7.200	V		3800.000	mmho-m			

After Survey Verification

		Readings			Targets			Results	
	Zero	Cal		Zero	Cal		m'	b'	
Deep	0.000	0.000	mmho/m	0.000	0.000	mmho/m	0.000	0.000	
Medium	0.000	0.000	mmho/m	0.000	0.000	mmho/m	0.000	0.000	
LL3		1.000	Ohm-m		1.000	Ohm-m			
		0.000	Ohm-m		0.000	Ohm-m			
		1.000	mmho-m		1.000	mmho-m			

Compensated Density Calibration Report

Serial-Model: GEAR4-GEARHART
 Source / Verifier: 143 / 143
 Master Calibration Performed: Mon Mar 19 19:07:19 2012

Master Calibration

	Density		Far Detector	Near Detector	
Magnesium	1.710	g/cc	1015.91	497.51	cps
Aluminum	2.600	g/cc	227.67	350.20	cps
Spine Angle = 76.79			Density/Spine Ratio = 0.579		
	Size		Reading		
Small Ring	8.00	in	3.21	V	
Large Ring	14.00	in	5.46	V	

Compensated Neutron Calibration Report

Serial Number: 6I
Tool Model: G

CALIBRATION

Detector	Readings		Target		Normalization
Short Space	1.00	cps	1.00	cps	1.0000
Long Space	1.00	cps	1.00	cps	1.0000

Gamma Ray Calibration Report

Serial Number: #8
Tool Model: OPEN
Performed: Mon Jun 13 16:56:43 2011

Calibrator Value: 150.0 GAPI

Background Reading: 0.0 cps
Calibrator Reading: 175.0 cps

Sensitivity: 0.8371 GAPI/cps