



**COMPLETION
& PRODUCTION
SERVICES CO.**

**RADIATION
GUARD
LOG**

Company OIL COMPANY OF AMERICA, INC.
Well SLIMMER #6
Field BEMIS-SHUTTS
County ELLIS
State KANSAS

Company	OIL COMPANY OF AMERICA, INC.	Location:	API # : 15-051-26336-00-00	Other Services
Well	SLIMMER #6		SW - NE - SW 1650' FSL & 3580' FEL	
Field	BEMIS-SHUTTS			
County	ELLIS	State	KANSAS	
Permanent Datum		GROUND LEVEL		Elevation
Log Measured From		KELLY BUSHING 7' A.G.L.		K.B. 1824
Drilling Measured From		KELLY BUSHING		D.F. 1822
				G.L. 1817

Date	10/31/12
Run Number	ONE
Depth Driller	3903
Depth Logger	3904
Bottom Logged Interval	3903
Top Log Interval	3300
Casing Driller	8 5/8" @ 1017
Casing Logger	1016
Bit Size	7 7/8
Type Fluid in Hole	CHEMICAL MUD
Density / Viscosity	9.3/47
pH / Fluid Loss	8.5/11.4
Source of Sample	FLOWLINE
Rim @ Meas. Temp	0.75@70F
Rmf @ Meas. Temp	0.56@70F
Rmc @ Meas. Temp	0.93@70F
Source of Rmf / Rmc	MEASURED
Rim @ BHT	0.46@115F
Time Circulation Stopped	2 HOURS
Time Logger on Bottom	
Maximum Recorded Temperature	115F
Equipment Number	680
Location	HAYS, KS.
Recorded By	IAN MABB
Witnessed By	ROGER MOSES
	JEFF GRONEMEG

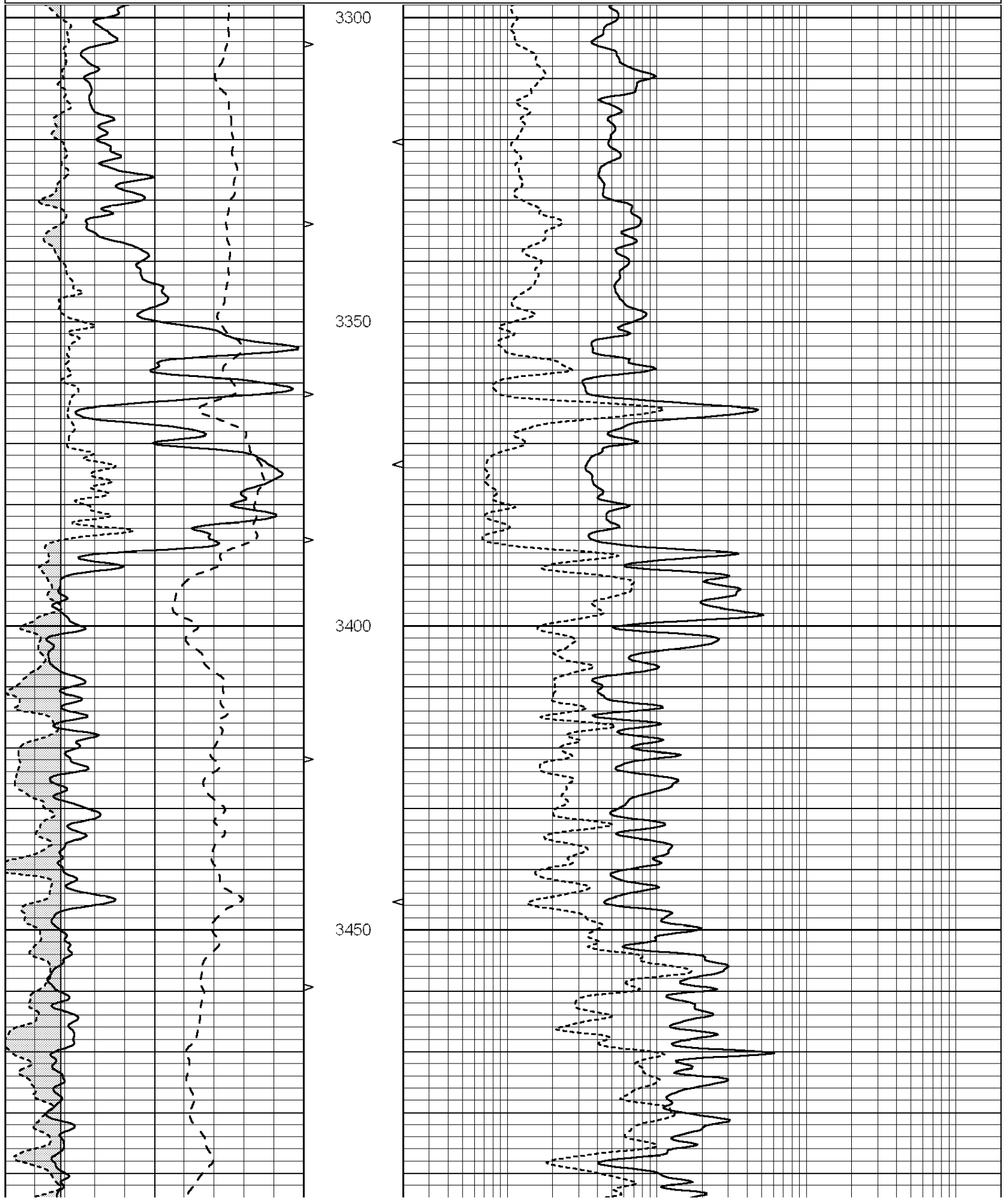
<<< Fold Here >>>

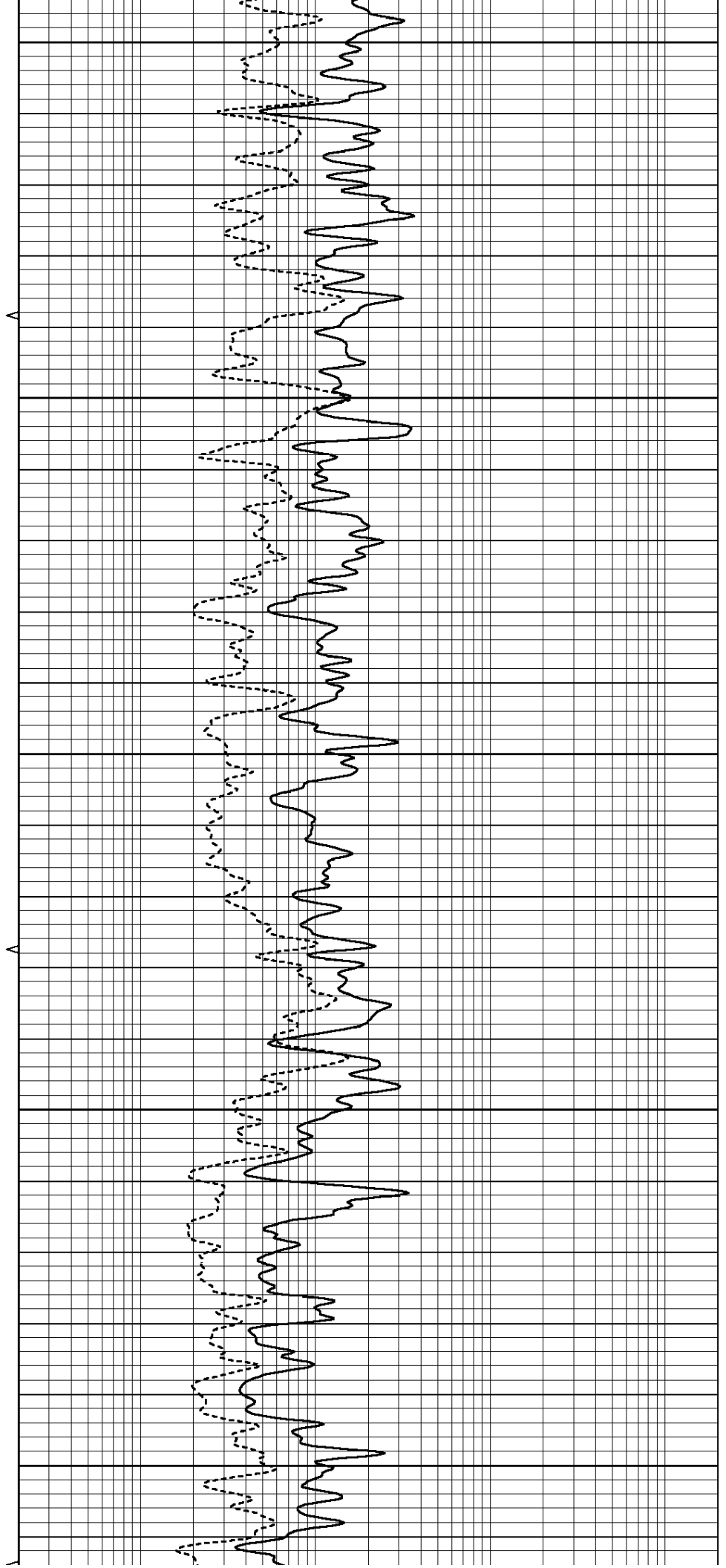
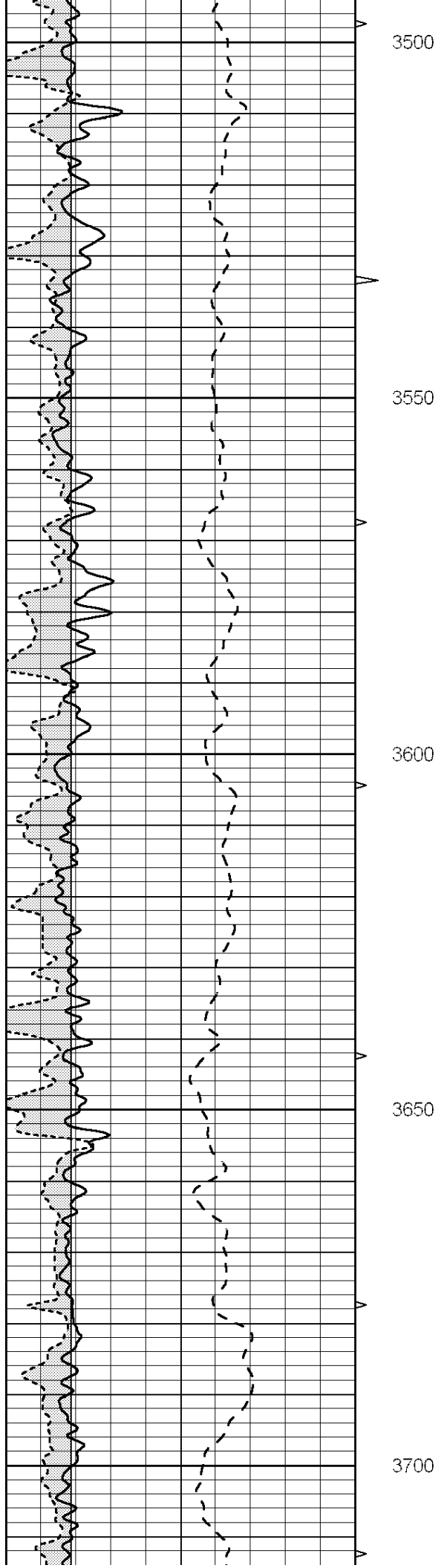
All interpretations are opinions based on inferences from electrical or other measurements and we cannot and do not guarantee the accuracy or correctness of any interpretation, and we shall not, except in the case of gross or willful negligence on our part, be liable or responsible for any loss, costs, damages, or expenses incurred or sustained by anyone resulting from any interpretation made by any of our officers, agents or employees. These interpretations are also subject to our general terms and conditions set out in our current Price Schedule.

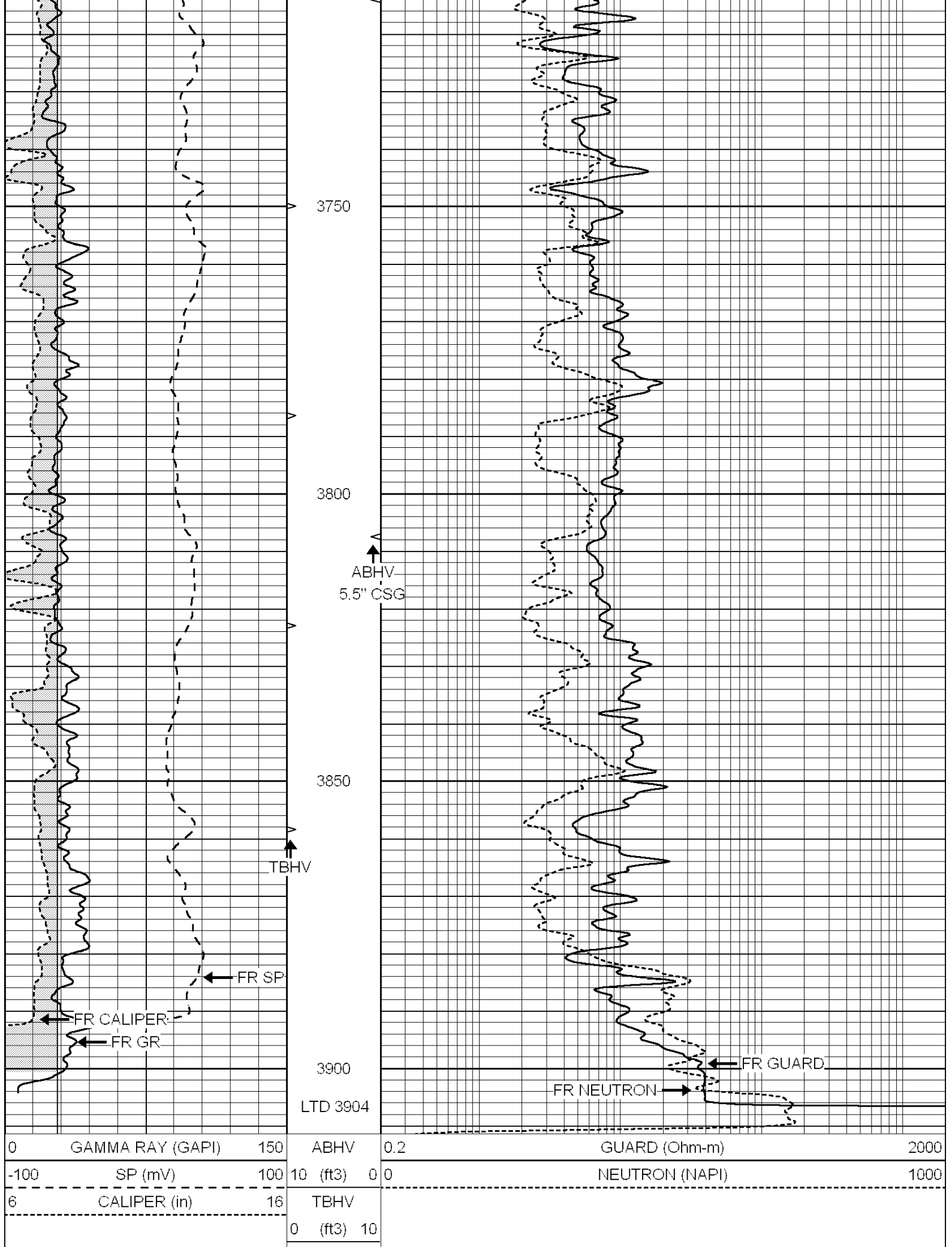
Comments

THANK YOU FOR USING SUPERIOR WELL SERVICE (785) 628-6395
DIRECTIONS
HAYS, KS - NORTH TO SALINE RIVER RD - EAST TO CODELL RD - 1 1/2 MILES EAST- NORTH INTO

0	GAMMA RAY (GAPI)	150	ABHV	0.2	GUARD (Ohm-m)	2000
-100	SP (mV)	100	10 (ft3)	0 0	NEUTRON (NAPI)	1000
6	CALIPER (in)	16	TBHV			
			0 (ft3)	10		







0	GAMMA RAY (GAPI)	150	ABHV	0.2	GUARD (Ohm-m)	2000
-100	SP (mV)	100	10 (ft3)	0 0	NEUTRON (NAPI)	1000
6	CALIPER (in)	16	TBHV			
			0 (ft3)	10		



**COMPLETION
& PRODUCTION
SERVICES CO.**

REPEAT SECTION

Database File: 009989rag.db
 Dataset Pathname: pass3.1.1
 Presentation Format: rag
 Dataset Creation: Wed Oct 31 04:54:52 2012
 Charted by: Depth in Feet scaled 1:240

0	GAMMA RAY (GAPI)	150	ABHV	0.2	GUARD (Ohm-m)	2000
-100	SP (mV)	100	10 (ft3) 0	0	NEUTRON (NAPI)	1000
6	CALIPER (in)	16	TBHV			
			0 (ft3) 10			

