



Dual Induction Log

DIGITAL LOG (785) 625-3858

API No.	15-163-23,995-00-00		
Company	American Patriot Oil		
Well	Carpenter No.1		
Field	Wildcat		
County	Rooks	State	Kansas
Location	700' FSL & 1650' FEL		
Sec: 19	Twp: 6S	Rge: 19W	Other Services CNL/CDL
Permanent Datum	Ground Level	Elevation 2098	Elevation K.B. 2103
Log Measured From	Kelly Bushing	5 Ft. Above Perm. Datum	D.F. G.L. 2098
Drilling Measured From	Kelly Bushing		

Date	11/2012	
Run Number	One	
Depth Driller	3630	
Depth Logger	3635	
Bottom Logged Interval	3634	
Top Log Interval	250	
Casing Driller	8.625 @ 259	
Casing Logger	260	
Bit Size	7.875	
Type Fluid in Hole	Chemical	
Salinity, ppm CL	1,000	
Density / Viscosity	9.3	55
pH / Fluid Loss	10.5	6.4
Source of Sample	Flowline	
Rm @ Meas. Temp	1.8 @ 51	
Rmf @ Meas. Temp	1.35 @ 51	
Rmc @ Meas. Temp	2.43 @ 51	
Source of Rmf / Rmc	Charts	
Rm @ BHT	.82 @ 112	
Operating Rig Time	3 Hours	
Max Rec. Temp. F	112	
Equipment Number	17	
Location	Hays	
Recorded By	C. Desaire	
Witnessed By	Doug Stewart	
Marked By	Mark Torr	

<<< Fold Here >>>

All interpretations are opinions based on inferences from electrical or other measurements and we cannot and do not guarantee the accuracy or correctness of any interpretation, and we shall not, except in the case of gross or willful negligence on our part, be liable or responsible for any loss, costs, damages, or expenses incurred or sustained by anyone resulting from any interpretation made by any of our officers, agents or employees. These interpretations are also subject to our general terms and conditions set out in our current Price Schedule.

Comments

Thank you for using Log-Tech, Inc.
 (785) 625-3858
 Stockton KS,
 4 N to E Rd, 10 1/2 W, N Into

Database File: americanhd.db
 Dataset Pathname: dil/ampatstk
 Presentation Format: dil2in
 Dataset Creation: Sun Jan 01 11:38:47 2012
 Charted by: Depth in Feet scaled 1:600

0 Gamma Ray 150
-200 SP 0

0 Shallow Resistivity 50
0 Deep Resistivity 50

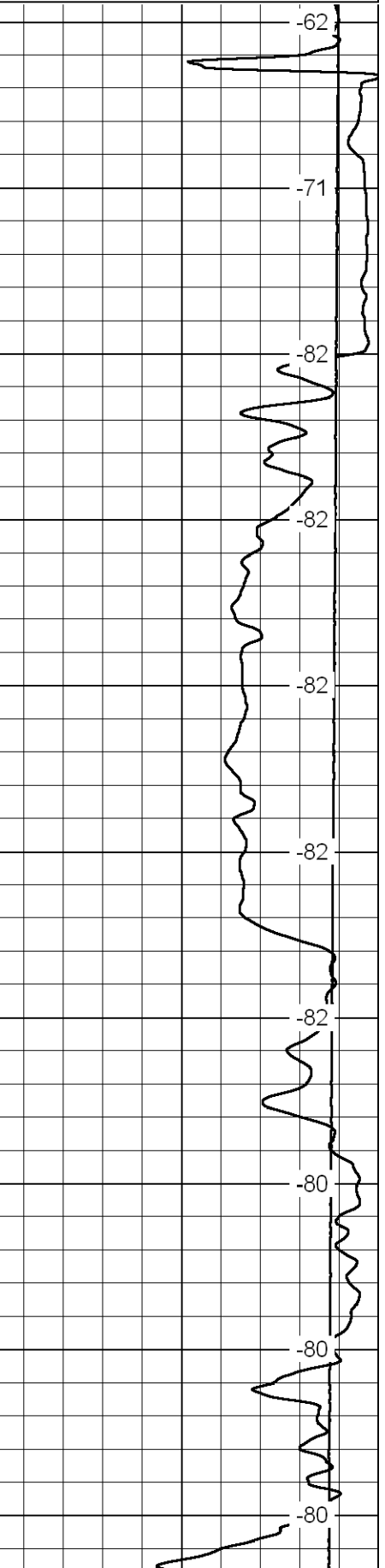
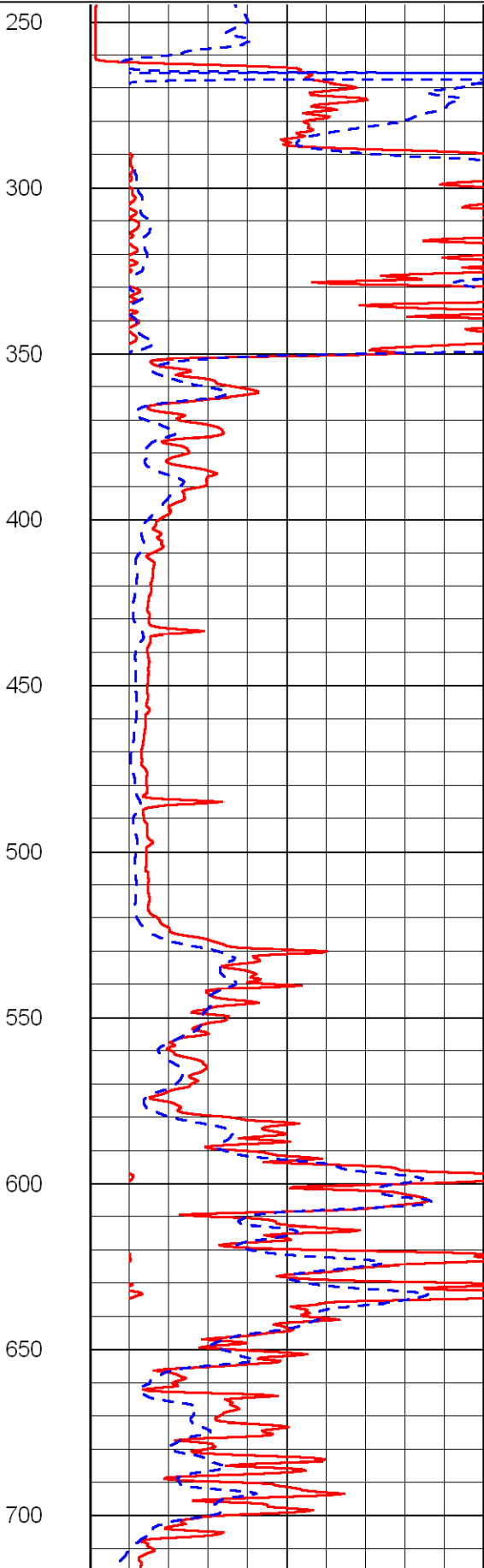
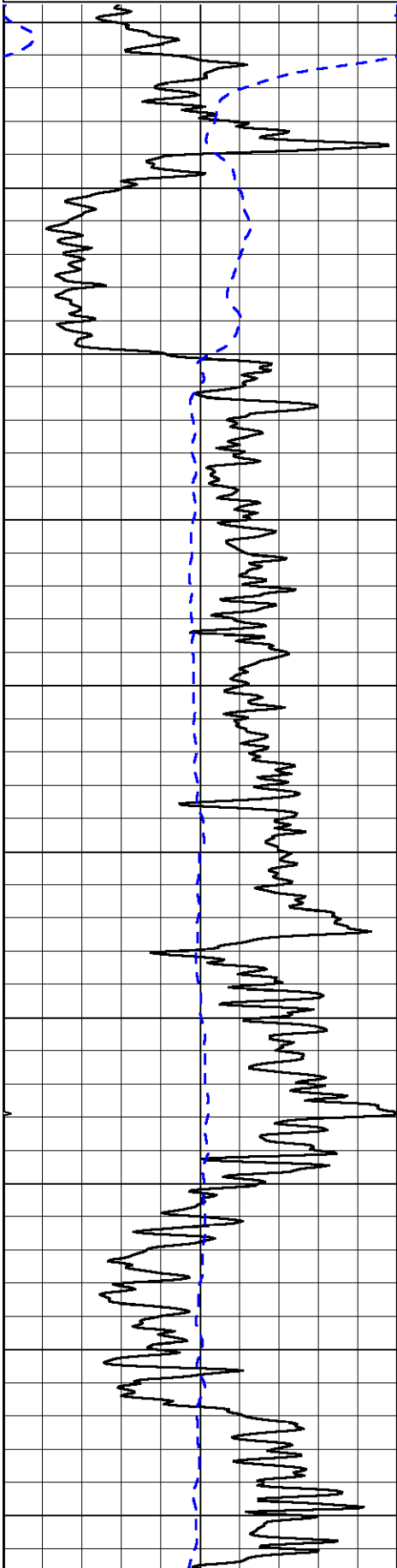
LSPD

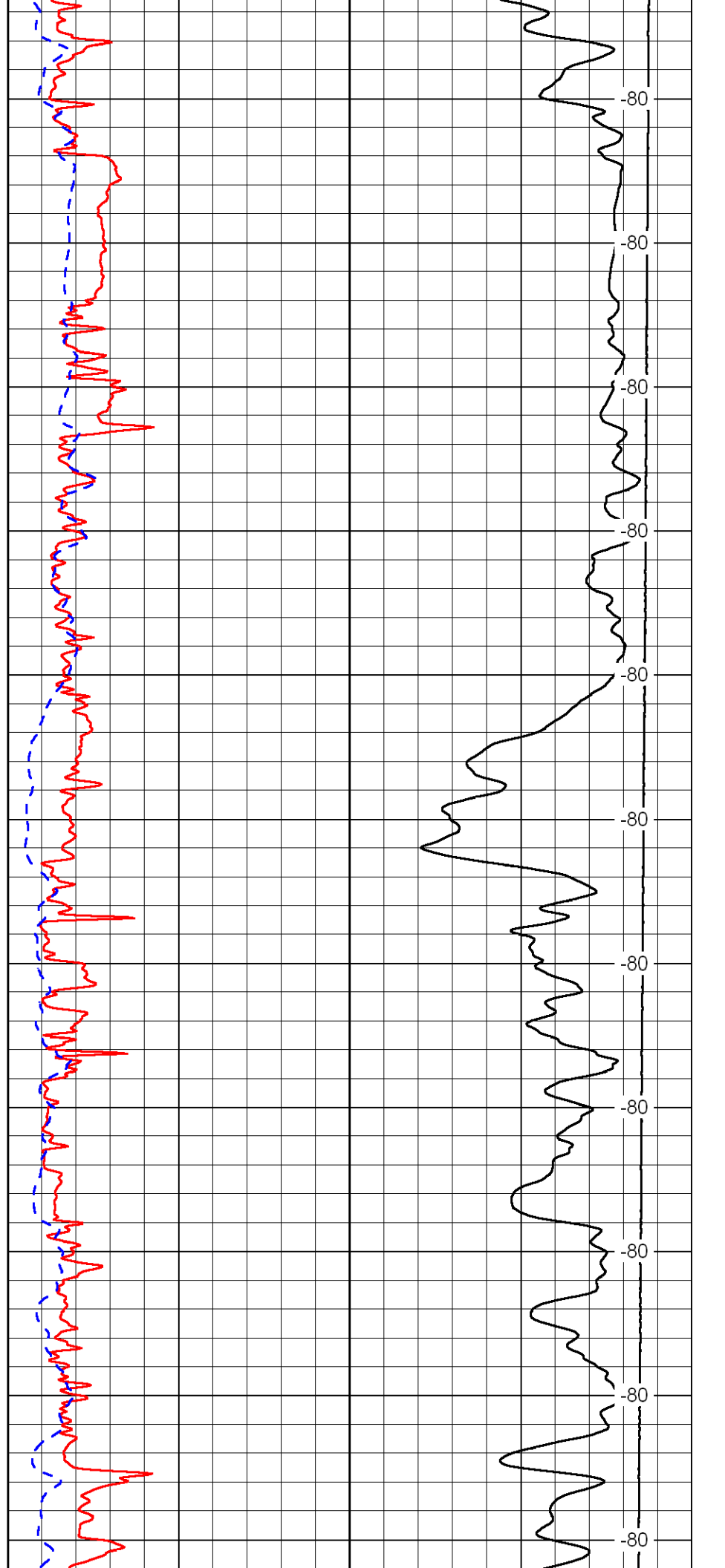
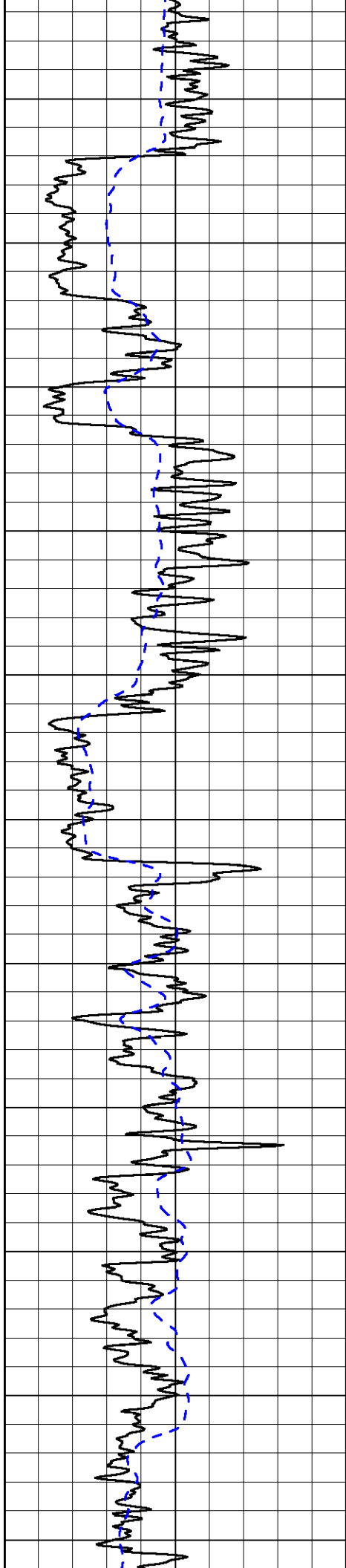
1000 Conductivity 0

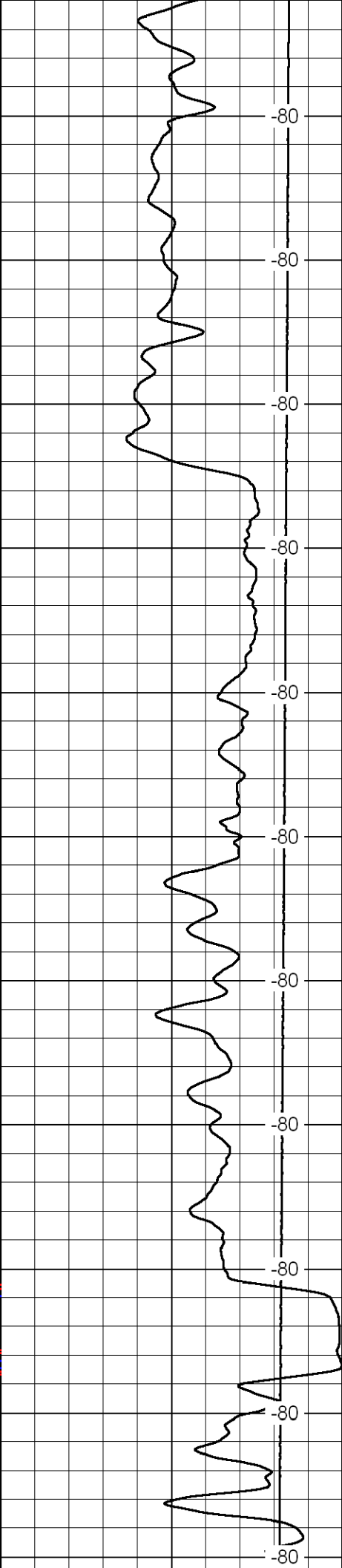
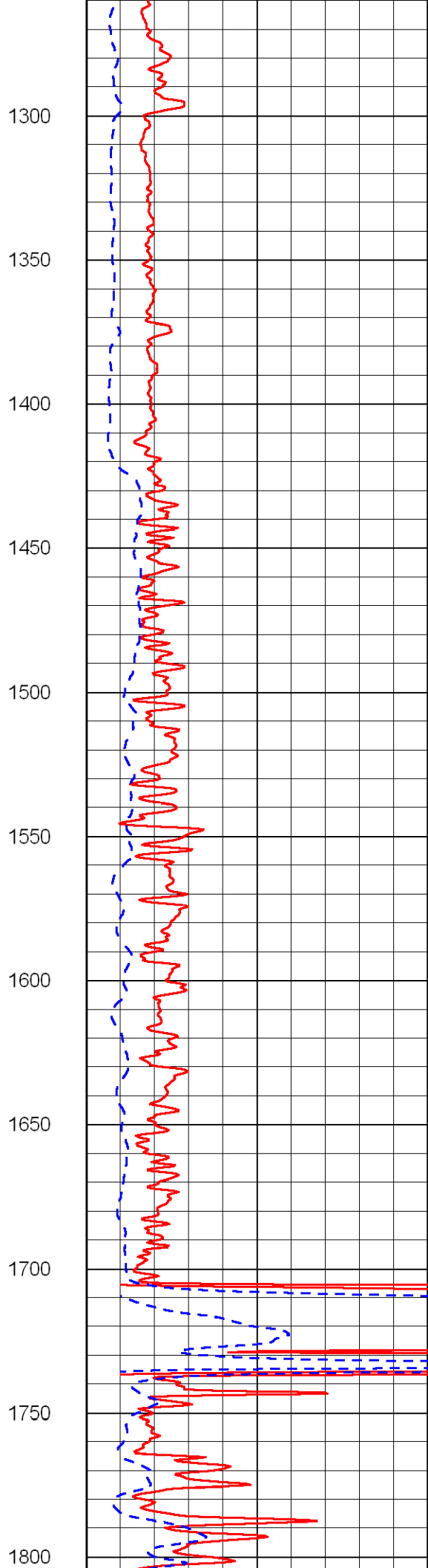
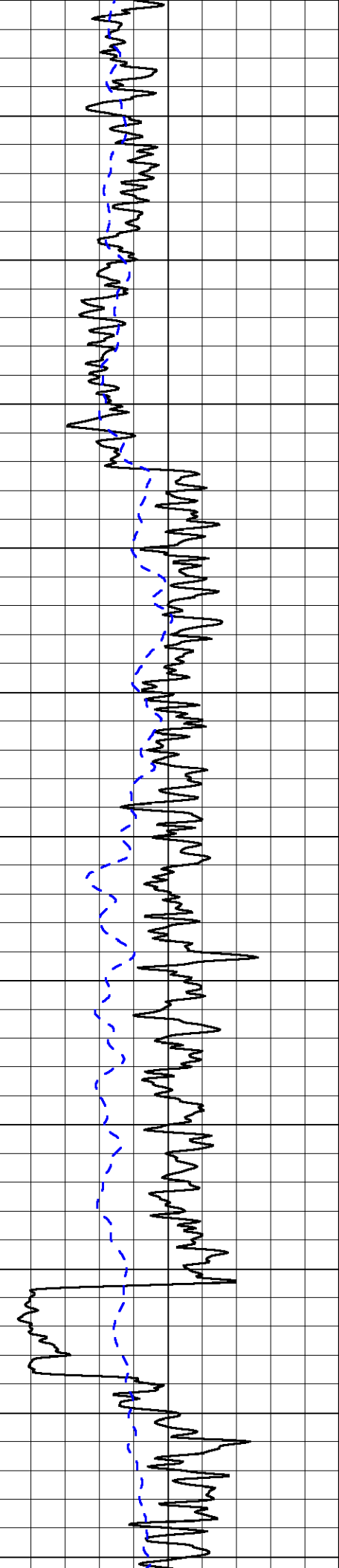
15000 Line Tension 0

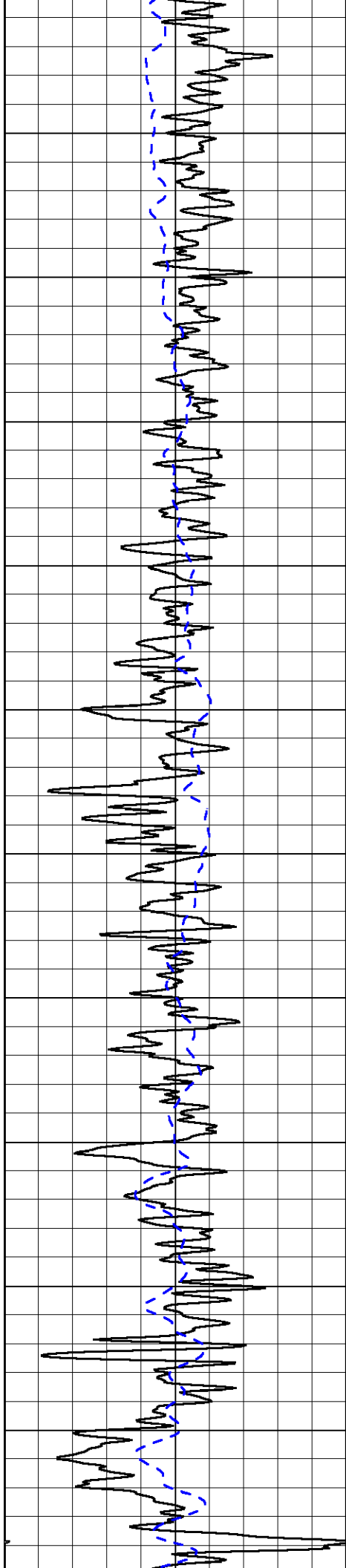
50 Shallow Resistivity 500

50 Deep Resistivity 500

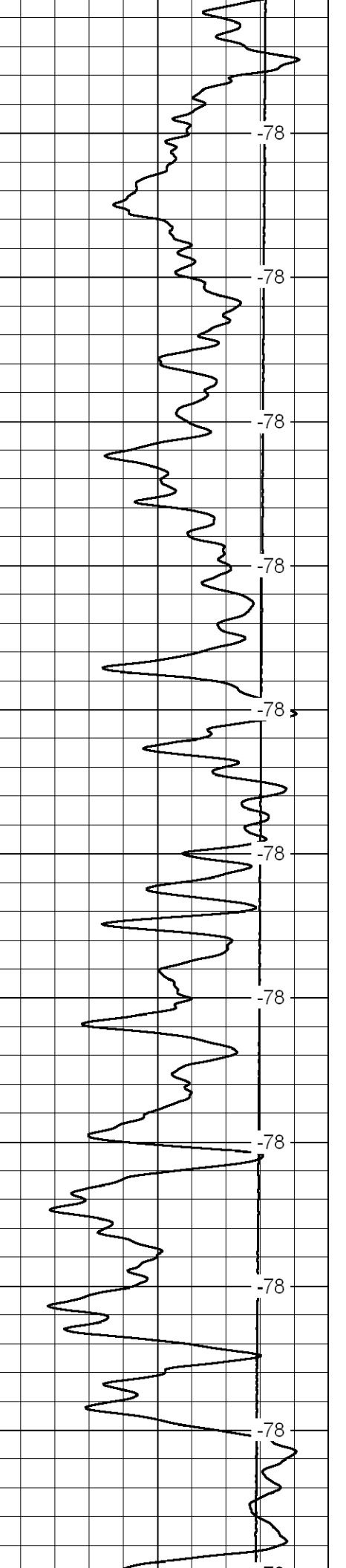
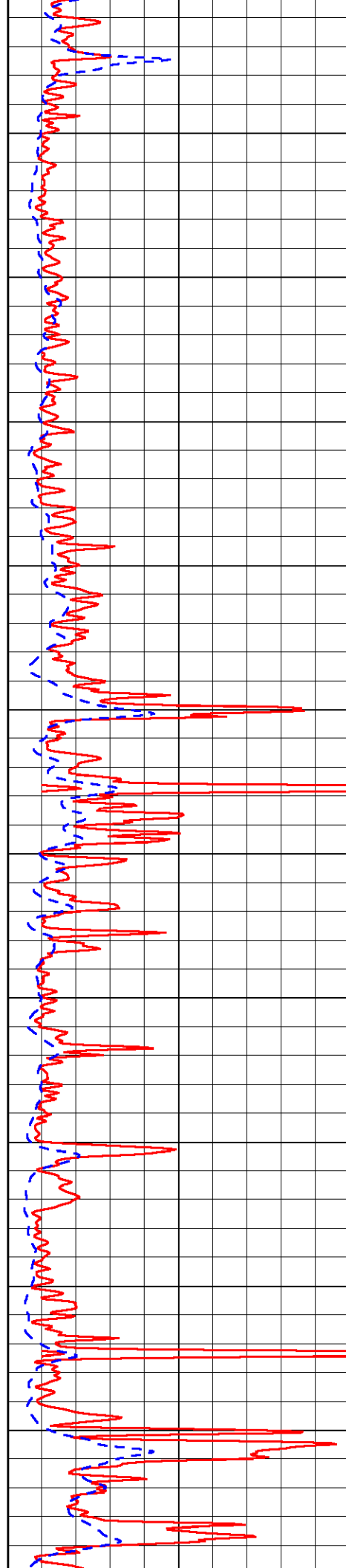




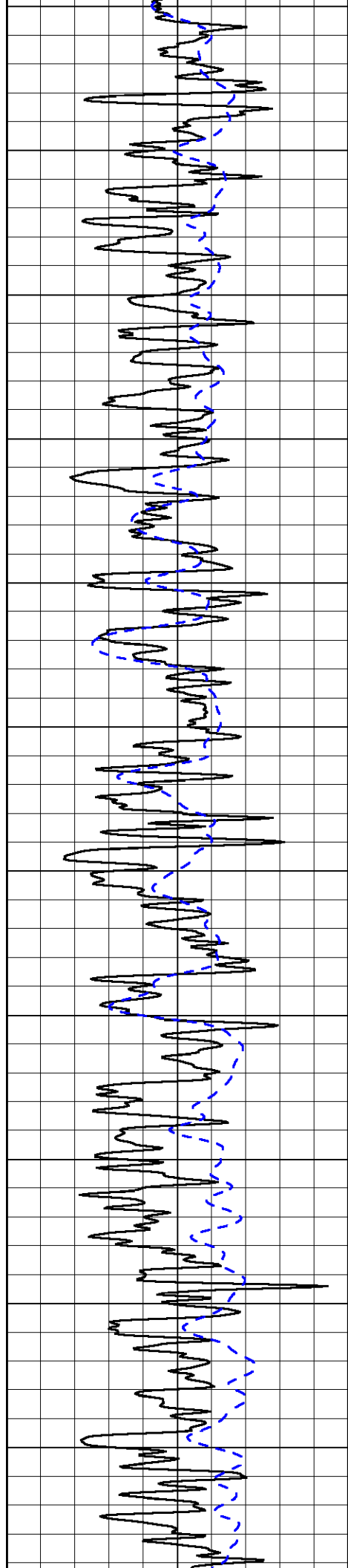




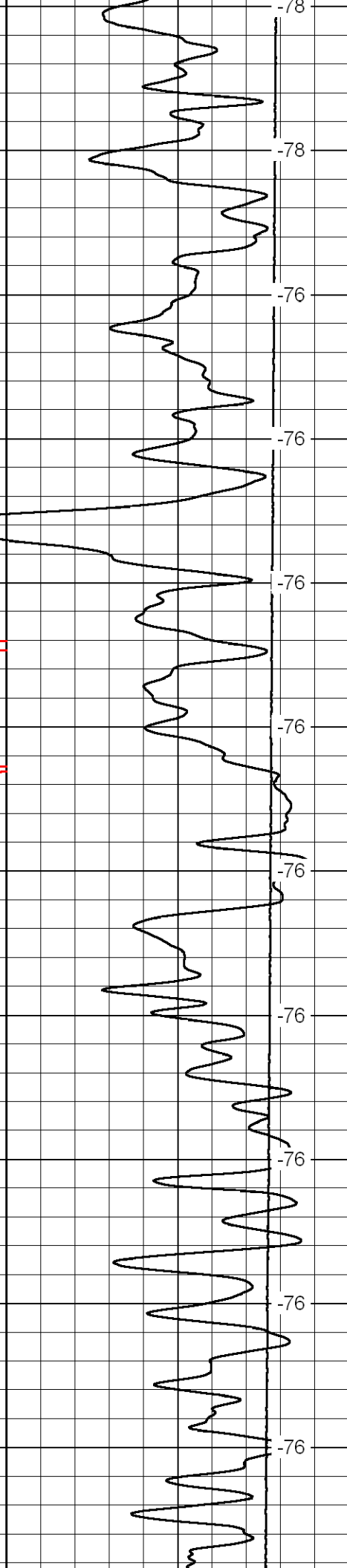
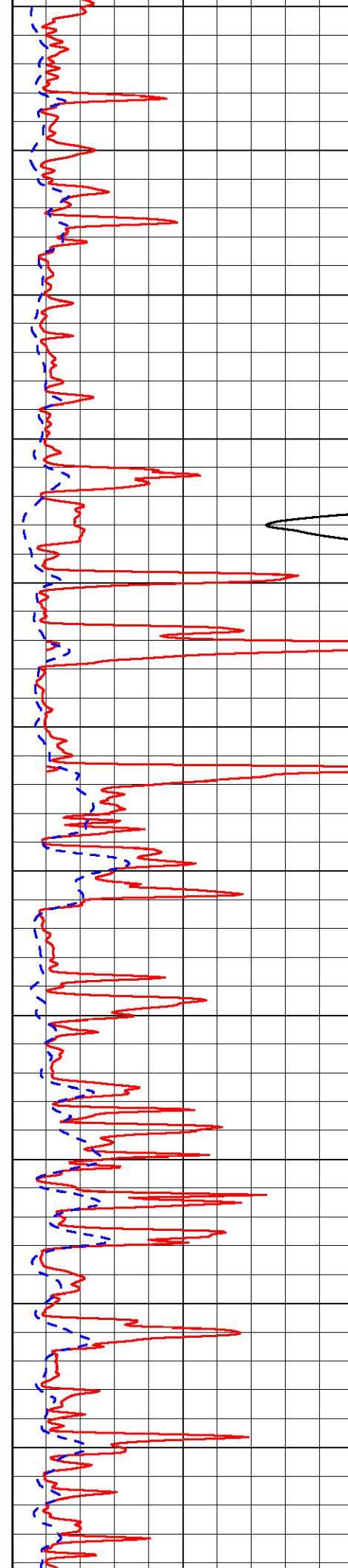
1850
1900
1950
2000
2050
2100
2150
2200
2250
2300



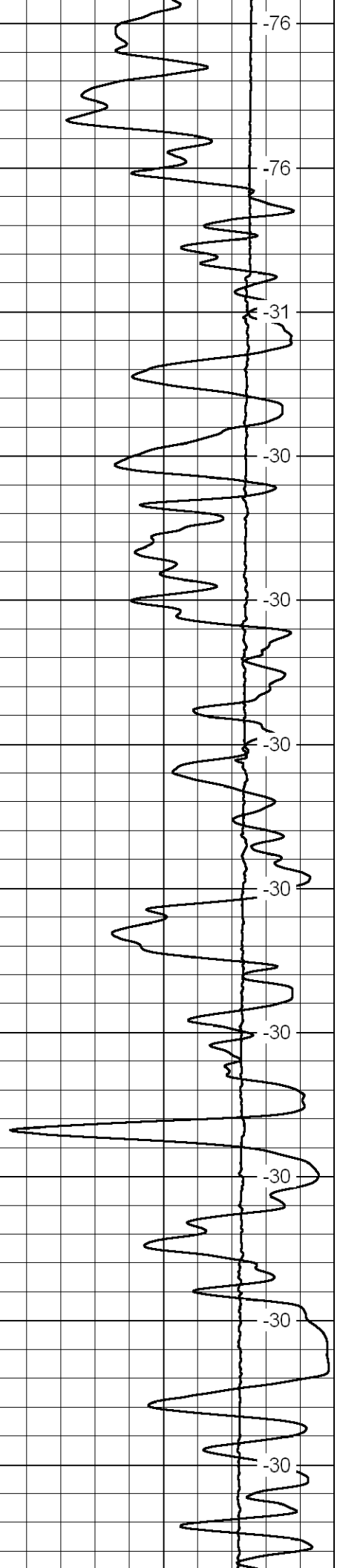
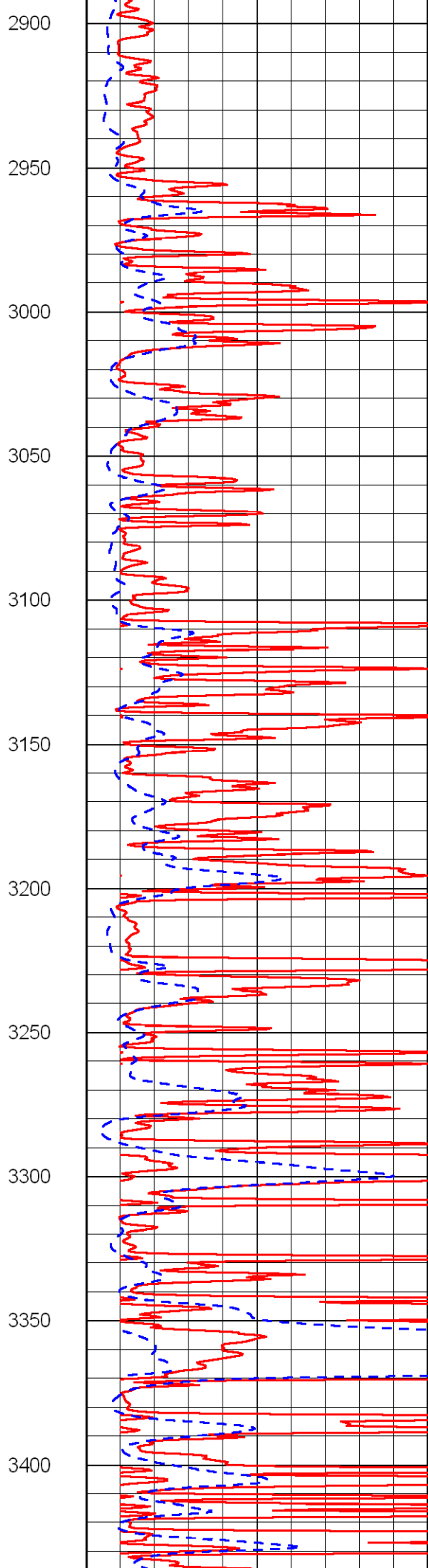
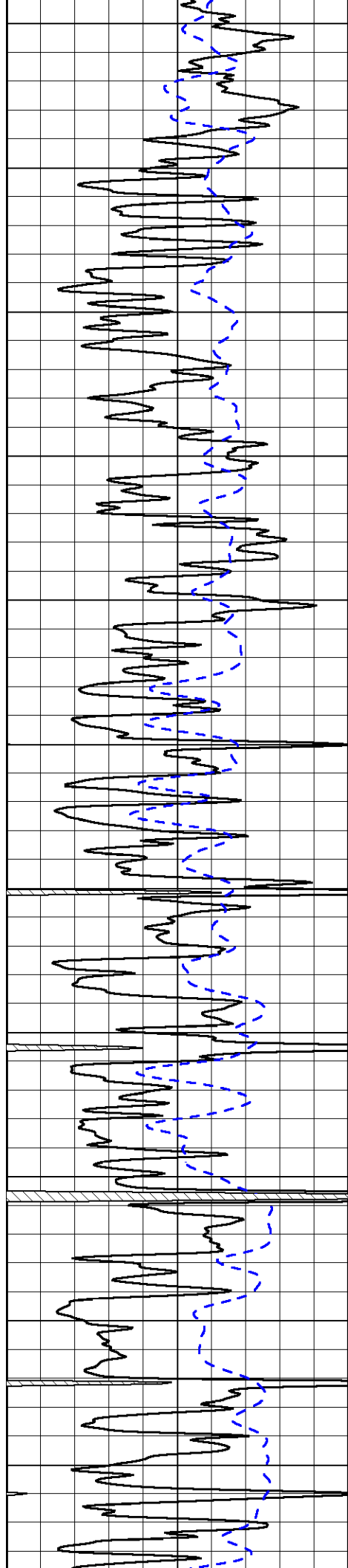
-78
-78
-78
-78
-78
-78
-78
-78
-78
-78

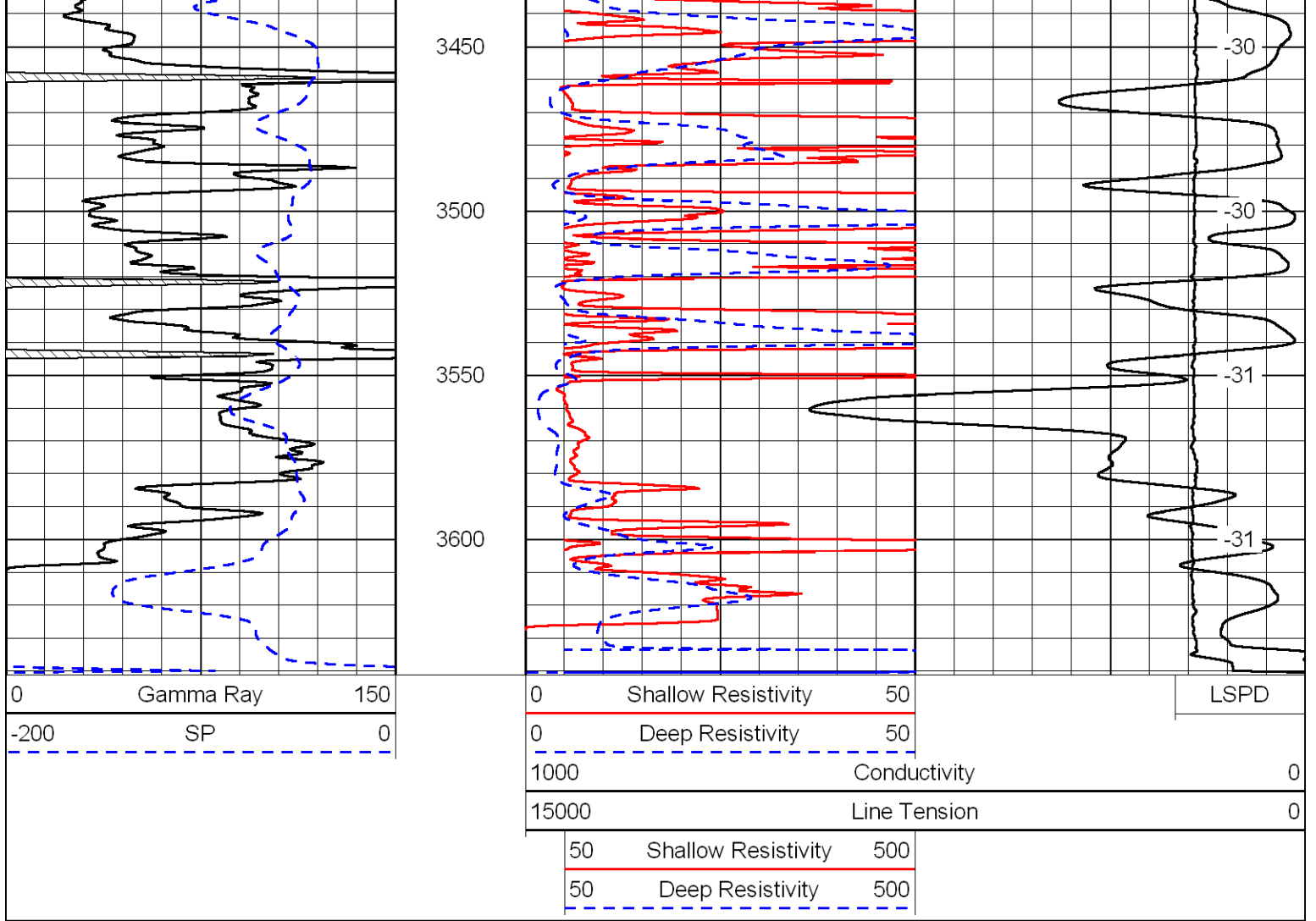


2350
2400
2450
2500
2550
2600
2650
2700
2750
2800
2850

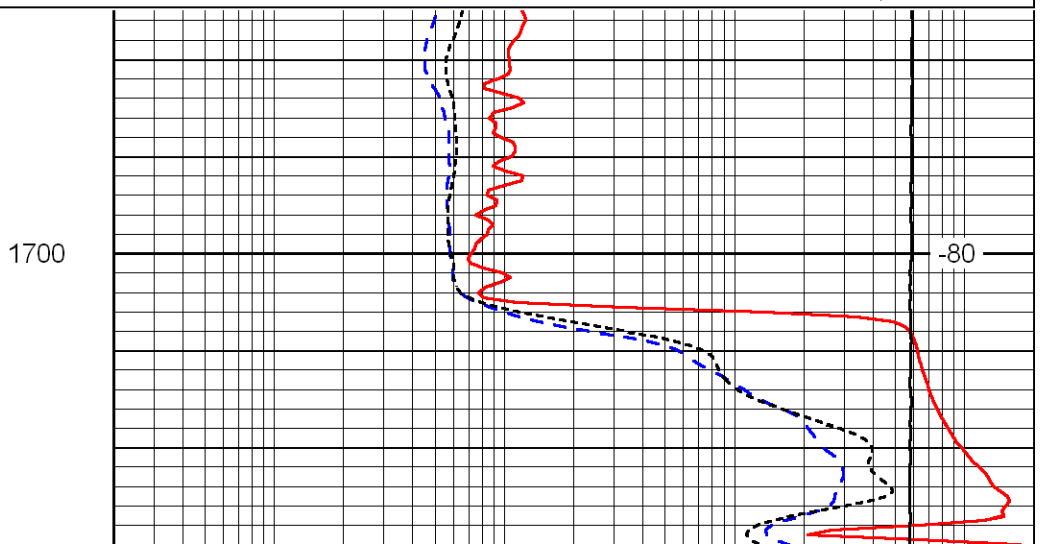
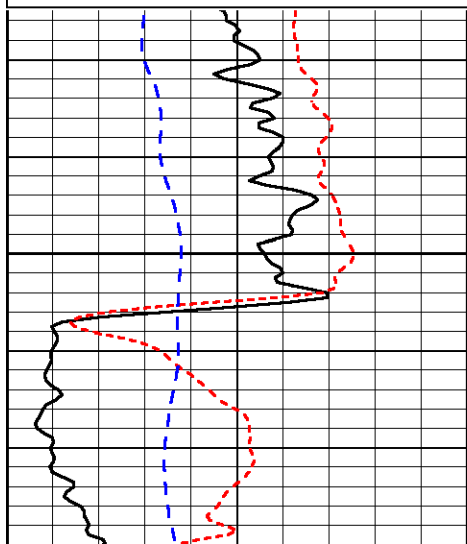
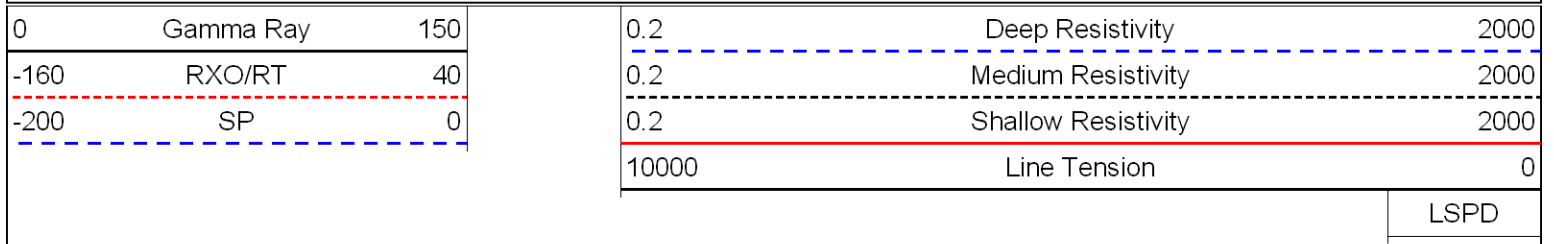


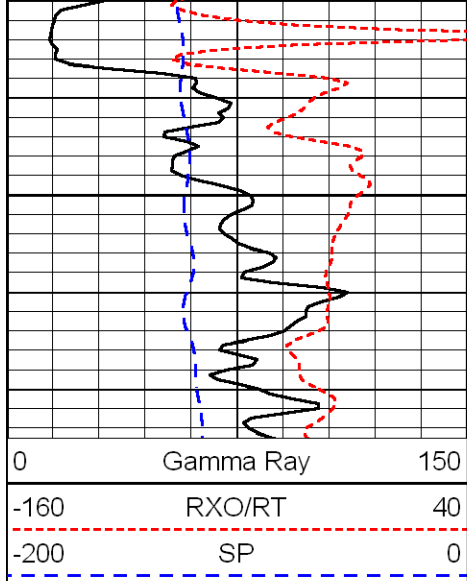
-78
-78
-76
-76
-76
-76
-76
-76
-76
-76
-76
-76



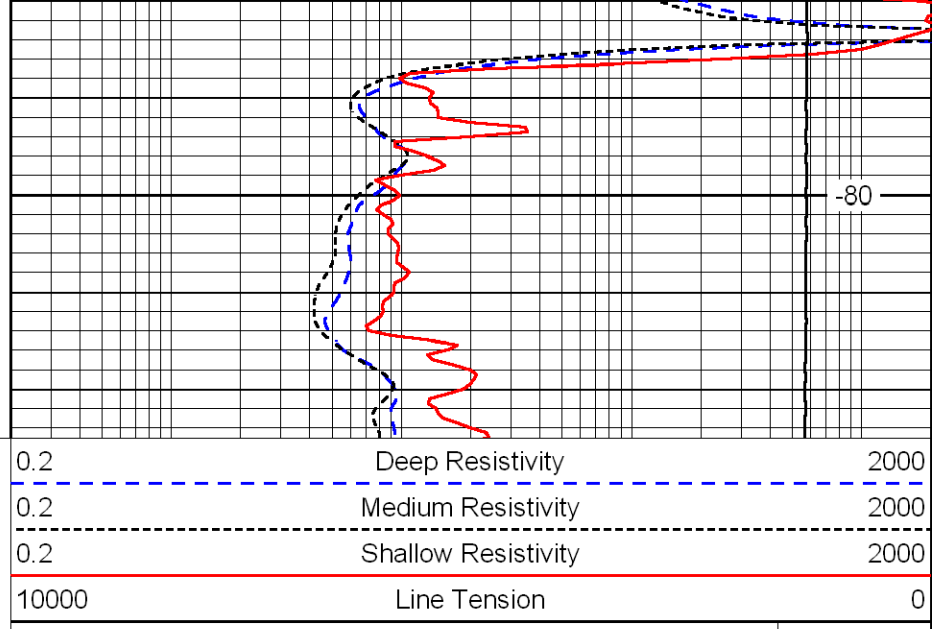


Database File: americanhd.db
 Dataset Pathname: dil/ampatstk
 Presentation Format: dil
 Dataset Creation: Sun Jan 01 11:38:47 2012
 Charted by: Depth in Feet scaled 1:240





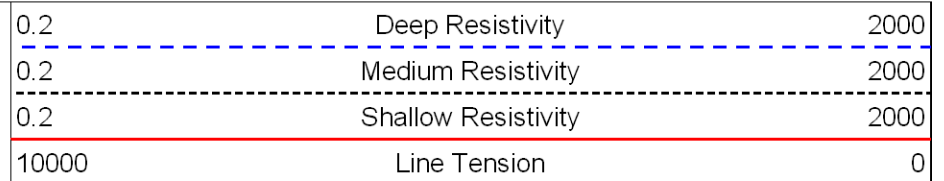
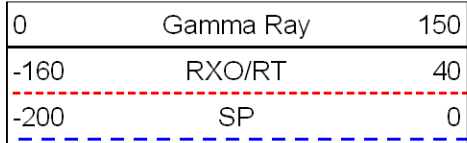
1750



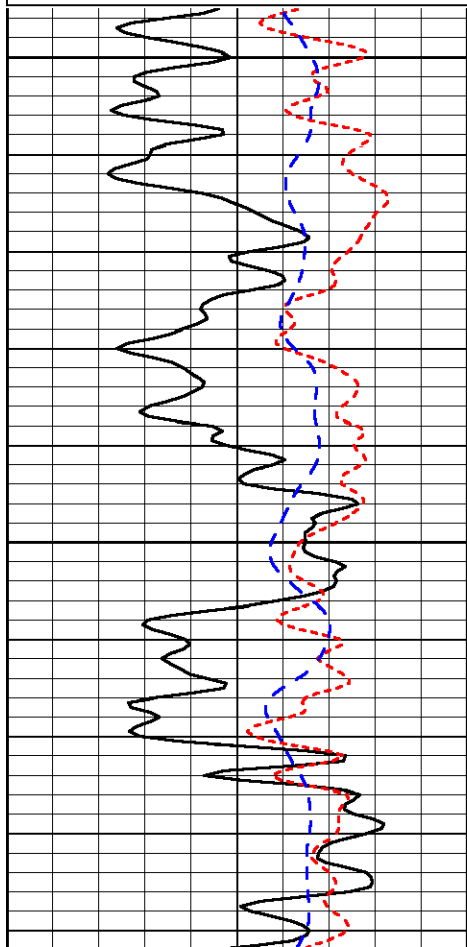
-80

LSPD

Database File: americanhd.db
 Dataset Pathname: dil/ampatstk
 Presentation Format: dil
 Dataset Creation: Sun Jan 01 11:38:47 2012
 Charted by: Depth in Feet scaled 1:240

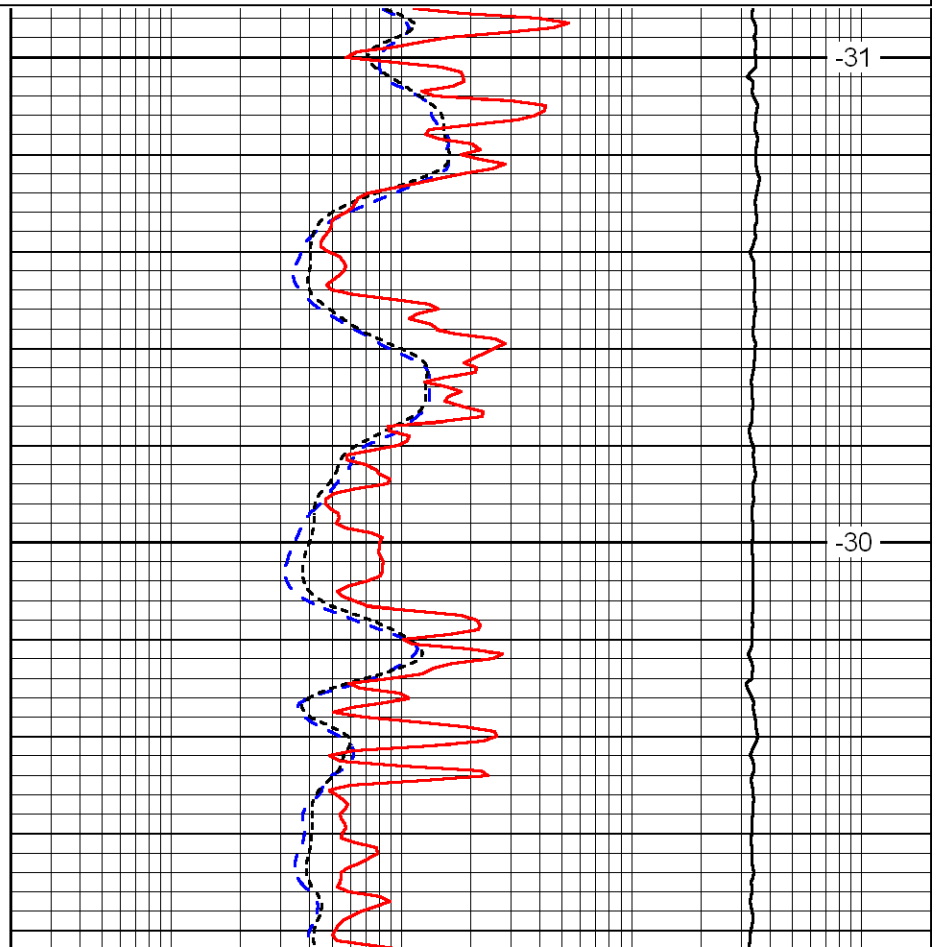


LSPD



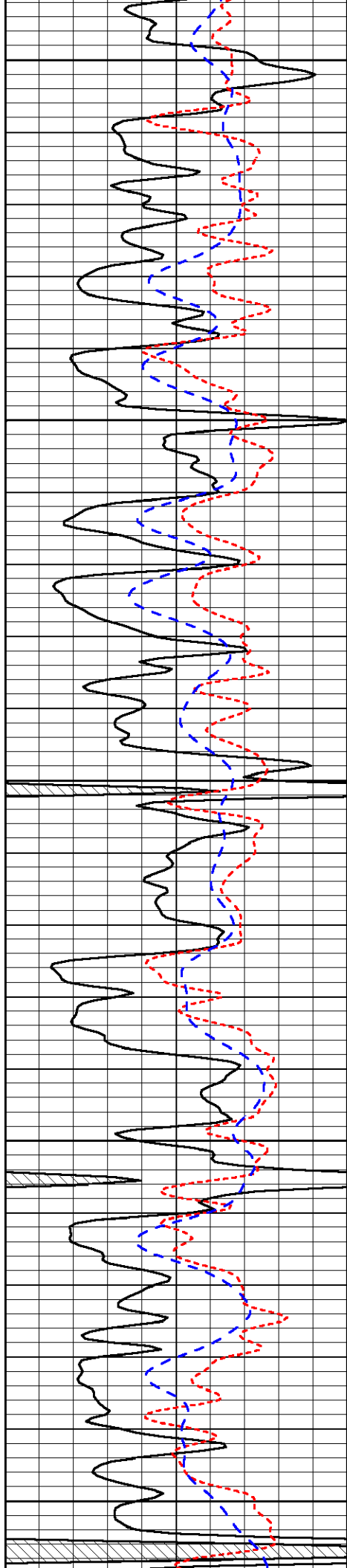
3000

3050



-31

-30



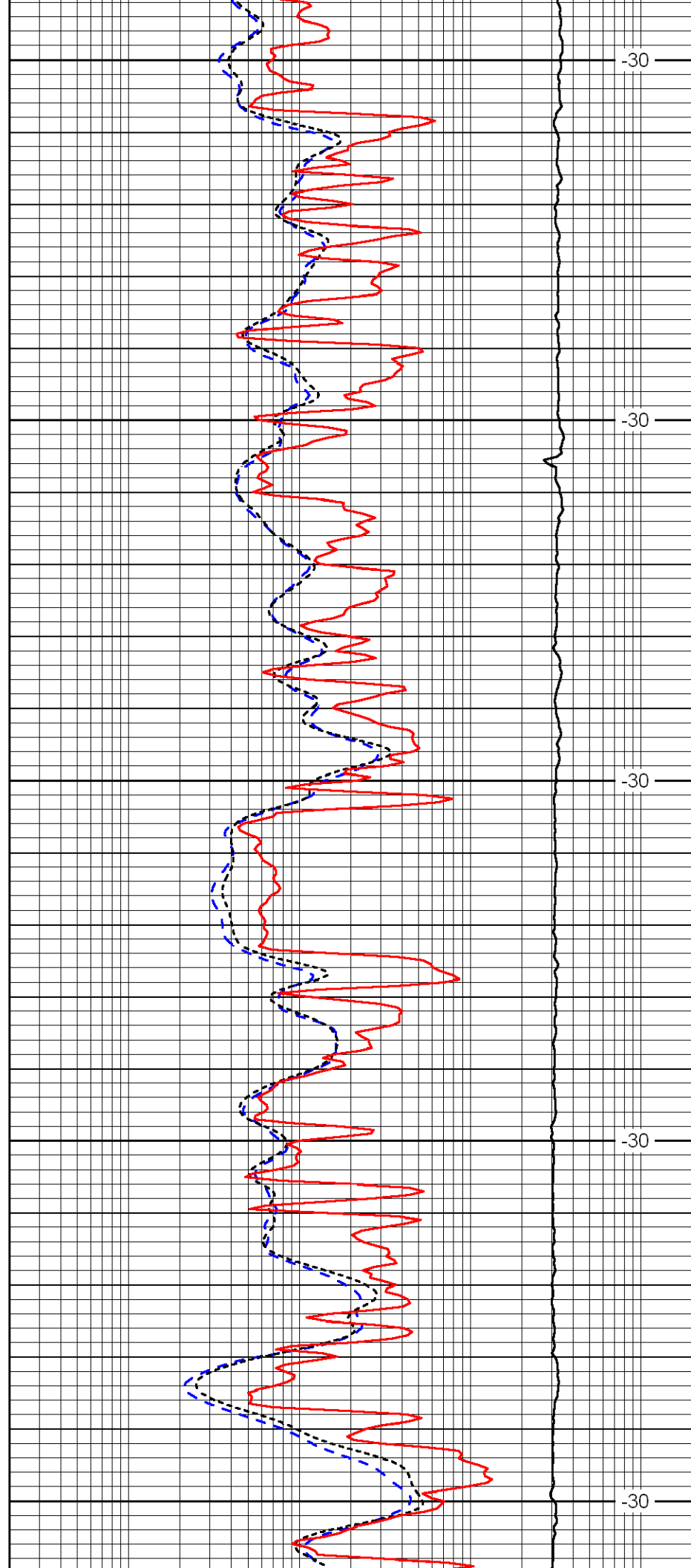
3100

3150

3200

3250

3300



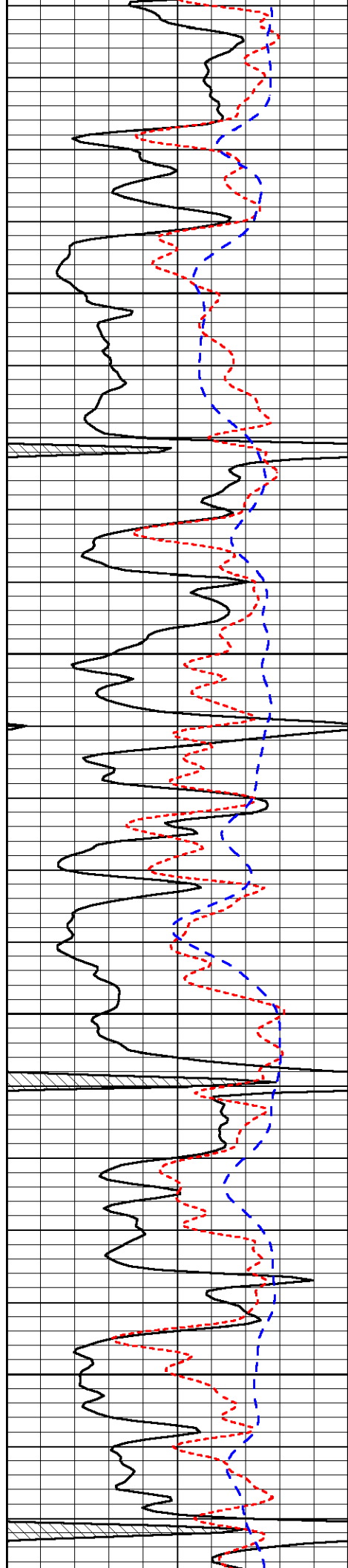
-30

-30

-30

-30

-30

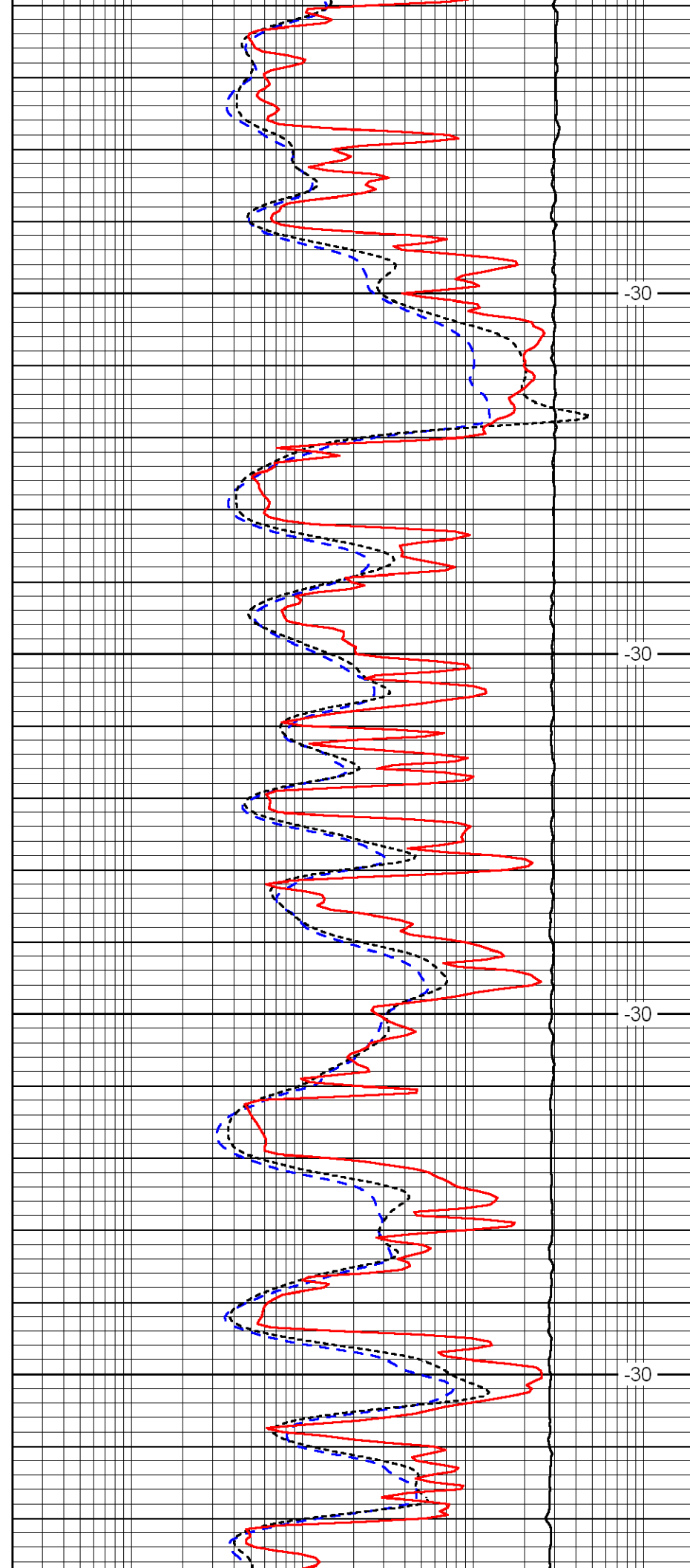


3350

3400

3450

3500

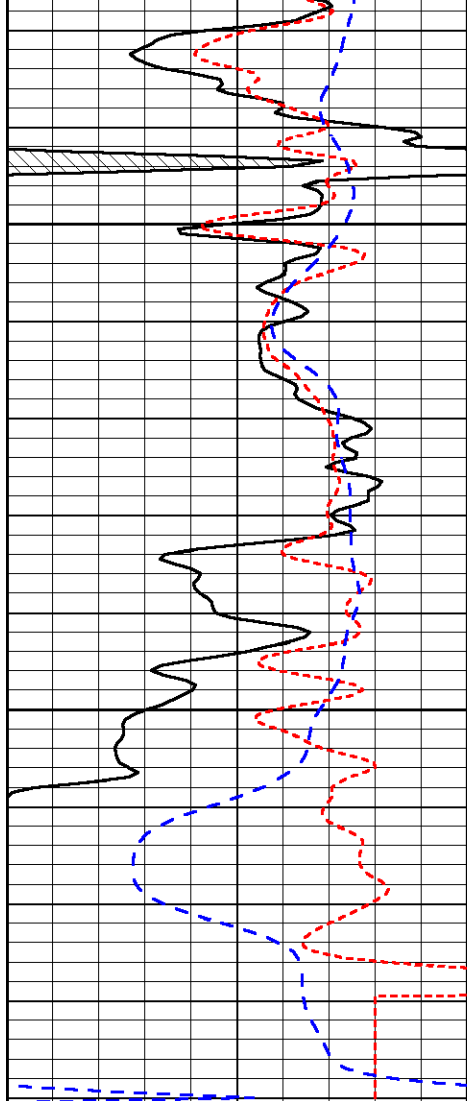


-30

-30

-30

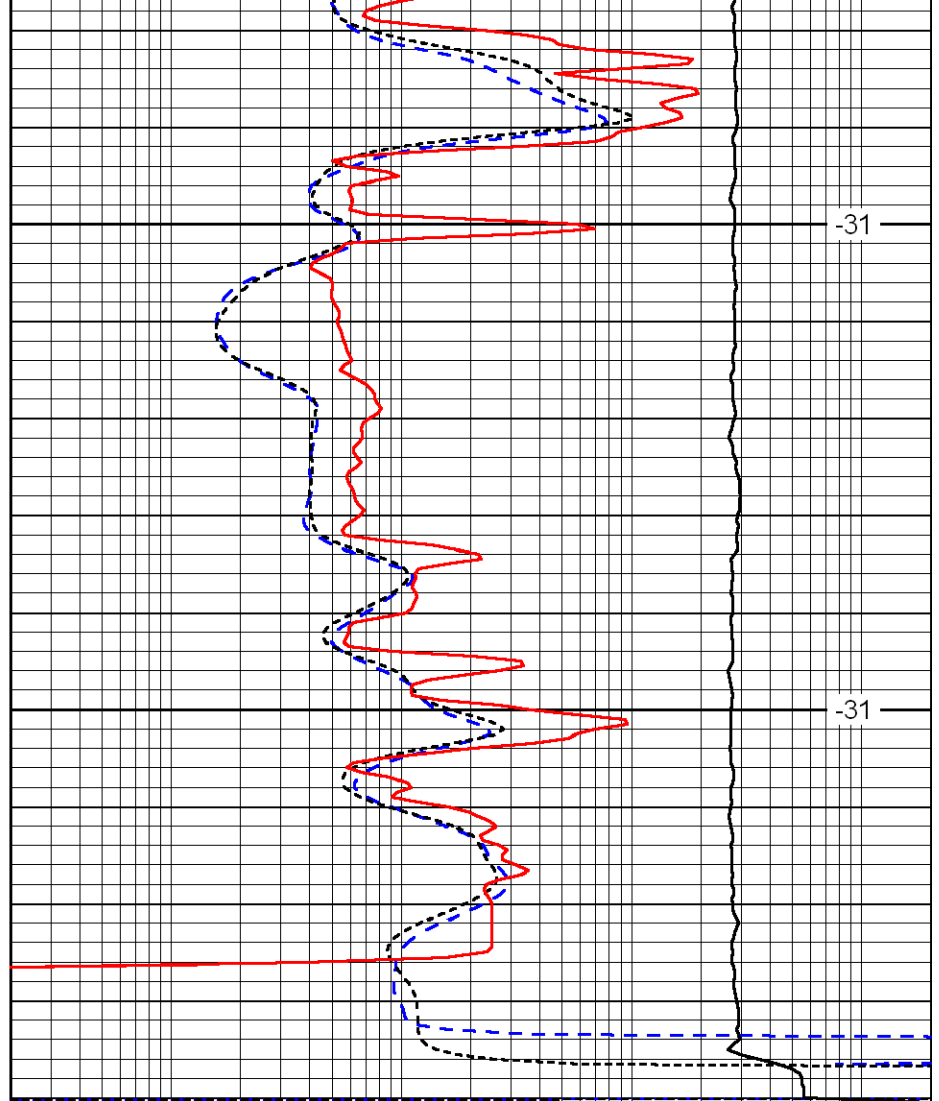
-30



3550

3600

0	Gamma Ray	150
-160	RXO/RT	40
-200	SP	0



-31

-31

0.2	Deep Resistivity	2000
0.2	Medium Resistivity	2000
0.2	Shallow Resistivity	2000
10000	Line Tension	0

LSPD