



Gamma Ray Ccl/Radial Cement Bond Log

Company: B-C Steel, LLC.		Well: Walton # 36-2 SWD		Field: Cowley		County: Cowley		State: Kansas	
Location:		API #:		Other Services:		SEC 36		TWP 22S	
Permanent Datum		Ground Level		Elevation		N/A		K.B. ---	
Log Measured From		Ground Level		Elevation		N/A		D.F. ---	
Drilling Measured From		Ground Level		Elevation		N/A		G.L. N/A	
Date:	7 July '11	Run Number:	2300	Depth Driller:	One	Bottom Logger:	2288	Bottom Logger Interval:	4.25'
Open Hole Size:	6.34"	Type Fluid:	Water	Density / Viscosity:		Max. Recorded Temp.:	138.0'	Estimated Cement Top:	Upon Arrival
Time Well Ready:		Time Well Ready:		Time Well Ready:		Time Well Ready:		Time Well Ready:	
Equipment Number:	OW4	Running Record By:	Kristal	Running Record By:	Kristal	Running Record By:	Kristal	Running Record By:	Kristal
Witnessed By:	Mr. Carlson	Witnessed By:	Mr. Carlson	Witnessed By:	Mr. Carlson	Witnessed By:	Mr. Carlson	Witnessed By:	Mr. Carlson
Run Number:	Bit	From:	To:	Size:	Weight:	From:	To:	From:	To:
Casing Record	Surface String	Size:	Weight:	From:	To:	From:	To:	From:	To:
Production String	Surface String	Size:	Weight:	From:	To:	From:	To:	From:	To:
Production String	Surface String	Size:	Weight:	From:	To:	From:	To:	From:	To:

All interpretations are opinions based on inferences from electrical or other measurements and we cannot and do not guarantee the accuracy or correctness of any interpretation, and we shall not, except in the case of gross or willful negligence on our part, be liable or responsible for any loss, costs, damages, or expenses incurred or sustained by anyone resulting from any interpretation made by any of our officers, agents or employees. These interpretations are also subject to our general terms and conditions set out in our current Price Schedule.

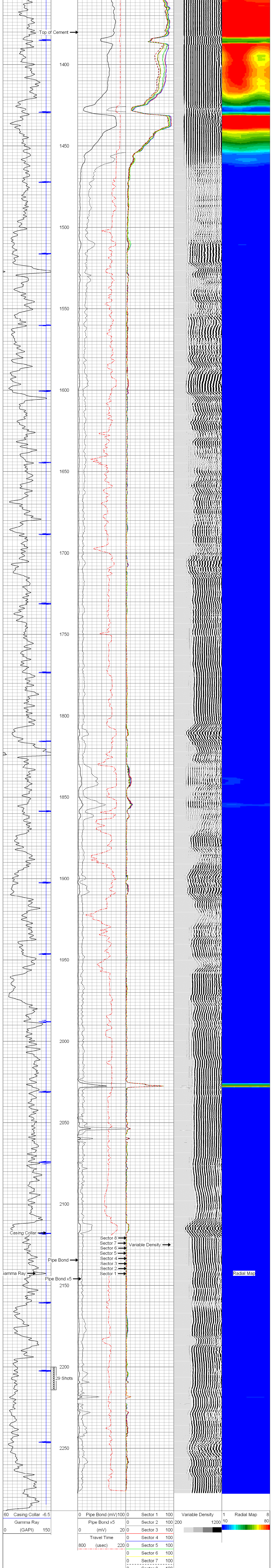
Comments

File #OW4-1709rbl
Thank You for using Osage Wireline!!

Gr/Ccl/Radial

Database File:	c:\warrior\data\ow4\ow4-1709rbl b c steel.db
Dataset Pathname:	pass4
Presentation Format:	0w4 crbt
Dataset Creation:	Thu Jul 07 14:07:21 2011 by Log Open-Cased 090629
Charted by:	Depth in Feet scaled 1:240

60 Casing Collar -6.5	0 Pipe Bond (mV) 100	0 Sector 1	100	Variable Density	1	Radial Map	8
Gamma Ray	0 Pipe Bond x5	0 Sector 2	100	200	10	80	
0 (GAPI) 150	0 (mV) 20	0 Sector 3	100				
	Travel Time	0 Sector 4	100				
	800 (usec) 220	0 Sector 5	100				
		0 Sector 6	100				
		0 Sector 7	100				
		0 Sector 8	100				



60 Casing Collar -6.5	0 Pipe Bond (mV) 100	0 Sector 1	100	Variable Density	1	Radial Map	8
Gamma Ray	0 Pipe Bond x5	0 Sector 2	100	200	10	80	
0 (GAPI) 150	0 (mV) 20	0 Sector 3	100				
	Travel Time	0 Sector 4	100				
	800 (usec) 220	0 Sector 5	100				
		0 Sector 6	100				
		0 Sector 7	100				
		0 Sector 8	100				

Gr/Ccl/Radial

Sensor	Offset (ft)	Schematic	Description	Len (ft)	OD (in)	Wt (lb)
			STNDRD Standard Cable Head	1.00	1.69	10.00
			Probe Probe 1 11/16 Centralizer	3.17	1.69	20.00
			RBT-Probe (070566) Prototype Probe Radial Bond Tool with Digital Telemetry	8.75	2.75	90.00
			Probe Probe 1 11/16 Centralizer	3.17	1.69	20.00
			GR_CCL-PRB275SINGLEPIN (060611) 2 3/4 GR CCL SINGLE PIN	4.54	2.75	57.00
WVF3FT	11.90					
WVF3AL	11.90					
WVFS1	11.90					
WVFS2	11.90					
WVFS3	11.90					
WVFS4	11.90					
WVFS5	11.90					
WVFS6	11.90					
WVFS7	11.90					
WVFS8	11.90					
WVF5FT	10.90					
CCL	3.63					
GR	0.90					

Dataset: ow4-1709rbl b c steel.db; field/well/run/pass4
 Total Length: 20.63 ft
 Total Weight: 197.00 lb
 O.D.: 2.75 in