



MIDWEST SURVEYS
 LOGGING - PERFORATING - CONSULTING SERVICES
 P. O. Box 68, Osawatomie, KS 68084
 913 / 755 - 2128

GAMMA RAY / NEUTRON / CCL

File No. Company **Atavista Energy, Inc.**
 Well **Early No. A1-5**
 Field **Baldwin**
 County **Douglas** State **Kansas**

Location **4150' FSL & 980' FEL**
SE-SWANE-NE
 Sec. 11 Twp. 15S Rge. 20E
 Permian Datum **GL** Elevation **1085'**
 Log Measured From **GL**
 Drilling Measured From **GL** Elevation **GL 1085'**

Date **04-22-2014**
 Run Number **One**
 Depth Driller **1000.0**
 Depth Logger **924.0**
 Bottom Logged Interval **923.0**
 Top Log Interval **20.0**
 Fluid Level **Full**

Type Fluid **Water**
 Density / Viscosity **NA**
 Salinity - PPM Cl **NA**
 Max Recorded Temp **NA**
 Equipment No. **0.0**
 Estimated Cement Top **0.0**
 Location **102 Osawatomie**
 Recorded By **Gary Windisch**
 Witnessed By **Doug Evans**

BORE-HOLE RECORD		CASING RECORD		
Run	BIT	TO	SIZE	
No.	FROM	FROM	WGT.	
		TO	FROM	
One	9 875"	97.0	7.00"	0.0
Two	3 825"	97.0	2.875"	6.5 #
		1000.0		0.0
			Baffle	Set
				At
				930.25

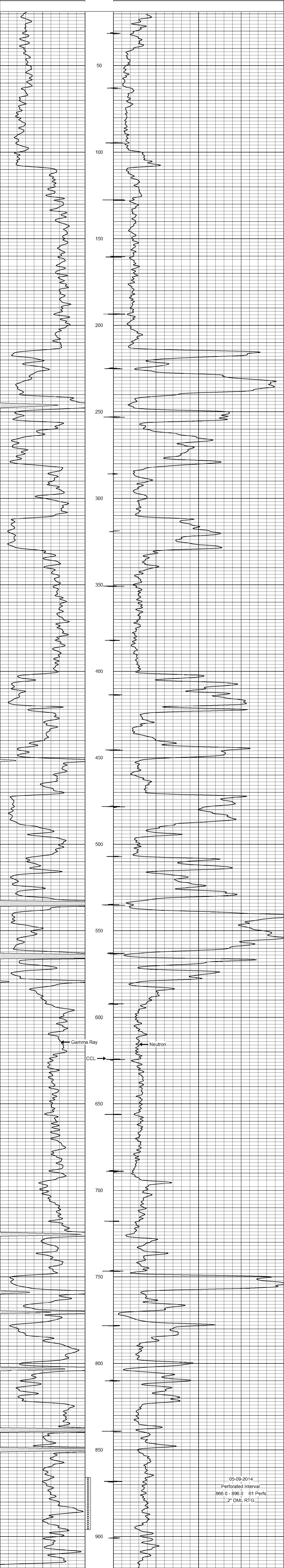
<<< Fold Here >>>

All interpretations are opinions based on inferences from electrical or other measurements and we cannot and do not guarantee the accuracy or correctness of any interpretation, and we shall not, except in the case of gross or willful negligence on our part, be liable or responsible for any loss, costs, damages, or expenses incurred or sustained by anyone resulting from any interpretation made by any of our officers, agents or employees. These interpretations are also subject to our general terms and conditions set out in our current Price Schedule.

Comments

Drilling Contractor :
Town Oilfield Services, Inc.

Database File: early5ai.db
 Dataset Pathname: pass1
 Presentation Format: gr-n-ccl
 Dataset Creation: Tue Apr 22 13:08:06 2014 by Log SCH 111116
 Charted by: Depth in Feet scaled 1:240



05-09-2014
 Perforated Interval
 866.0 - 896.0 61 Perfs.
 2" DML RTG