



Pioneer Energy Services

Microresistivity Log

15-145-21,763-00-00

API No.

Company **Downing-Nelson Oil Company, Inc.**

Well **Brenda #1-8**

Field **Browns Grove**

County **Pawnee** State **Kansas**

Location **1370' FSL & 2310' FEL**

Other Services
CNL/CDL
DIL/BHCS

Sec: **8** Twp: **20S** Rge: **20W**

Permanent Datum **Ground Level** Elevation **2180**
Log Measured From **Kelly Bushing** **8** Ft. Above Perm. Datum
Drilling Measured From **Kelly Bushing**

Elevation
K.B. 2188
D.F. 2188
G.L. 2180

Date	4/21/2104	
Run Number	Two	
Depth Driller	4336	
Depth Logger	4337	
Bottom Logged Interval	4336	
Top Log Interval	3400	
Casing Driller	8.625 @ 1171	
Casing Logger	1168	
Bit Size	7.875	
Type Fluid in Hole	Chemical	
Salinity, ppm CL	5000	
Density / Viscosity	9.5 50	
pH / Fluid Loss	9.5 9.2	
Source of Sample	Flowline	
Rm @ Meas. Temp	0.71 @ 87	
Rmf @ Meas. Temp	0.53 @ 87	
Rmc @ Meas. Temp	0.96 @ 87	
Source of Rmf / Rmc	Charts	
Rm @ BHT	0.52 @ 119	
Operating Rig Time	6 Hours	
Max Rec. Temp. F	119	
Equipment Number	15	
Location	Hays	
Recorded By	D.Kerr	
Witnessed By	AI Downing	

<<< Fold Here >>>

All interpretations are opinions based on inferences from electrical or other measurements and we cannot and do not guarantee the accuracy or correctness of any interpretation, and we shall not, except in the case of gross or willful negligence on our part, be liable or responsible for any loss, costs, damages, or expenses incurred or sustained by anyone resulting from any interpretation made by any of our officers, agents or employees. These interpretations are also subject to our general terms and conditions set out in our current Price Schedule.

Comments

Thank you for using Log-Tech, Inc.
(785) 625-3858

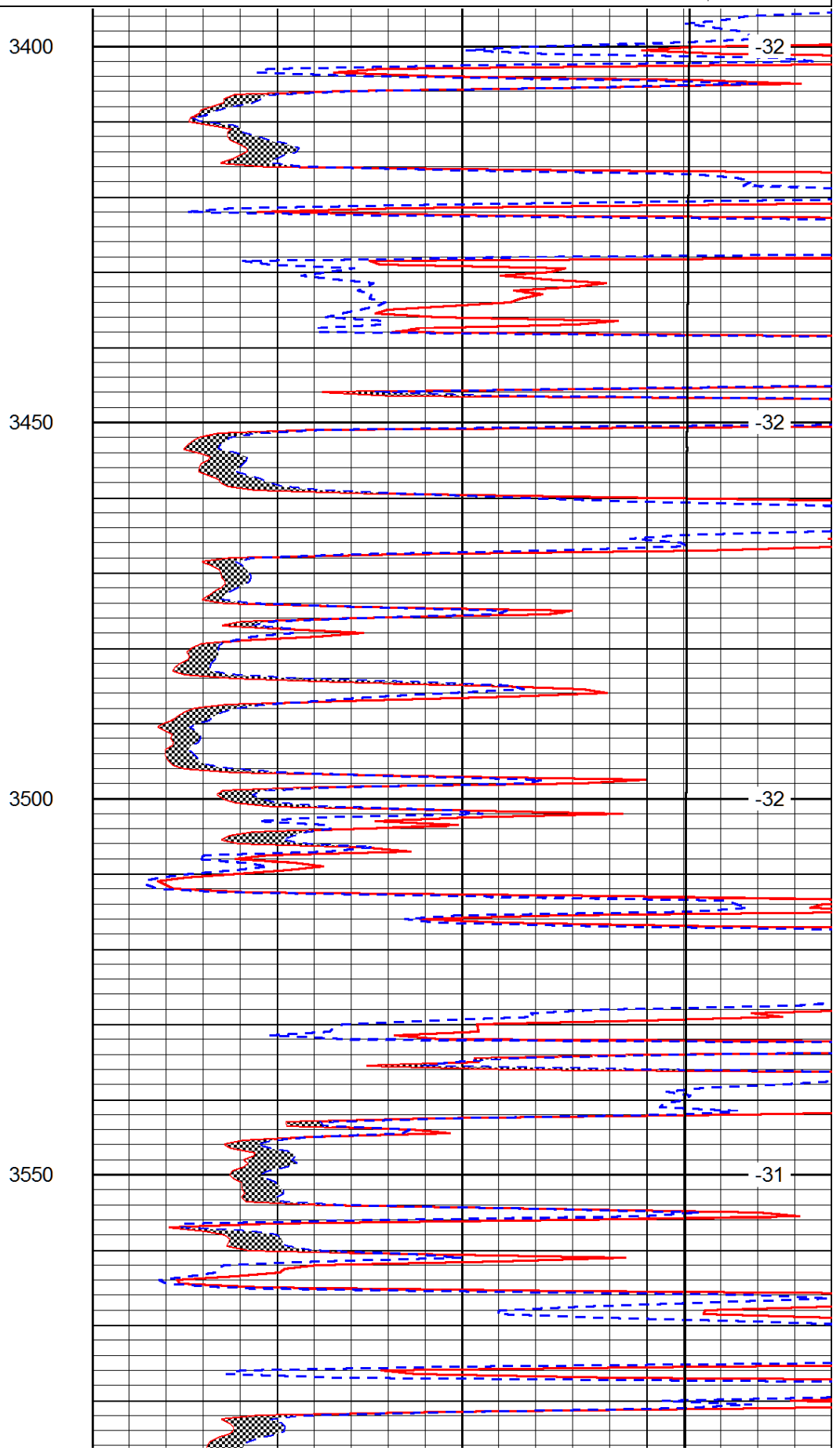
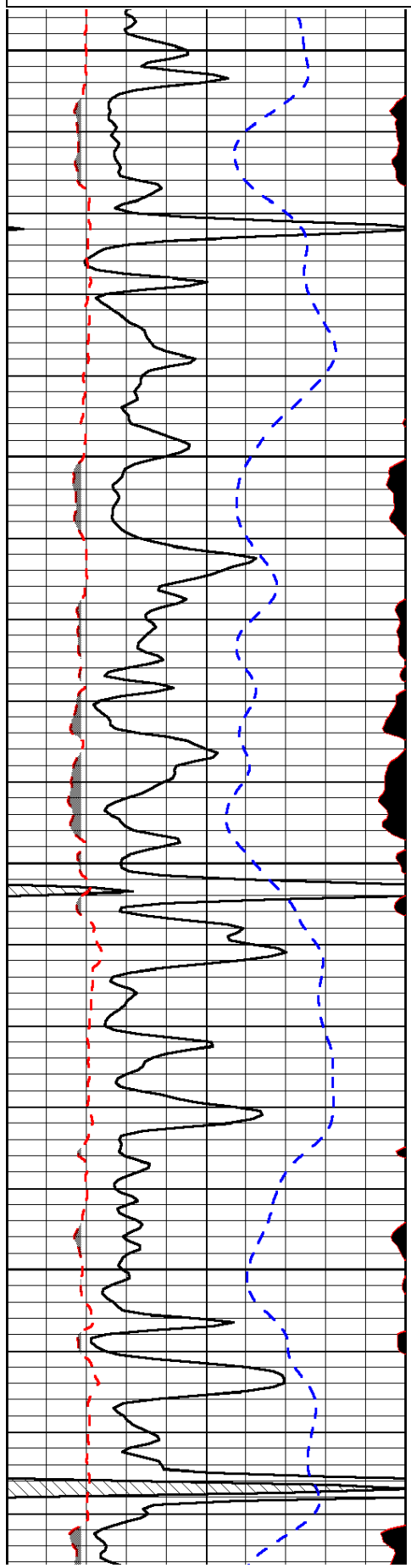
Alexander KS, 10 South to X RD,
1/4 West, North Into

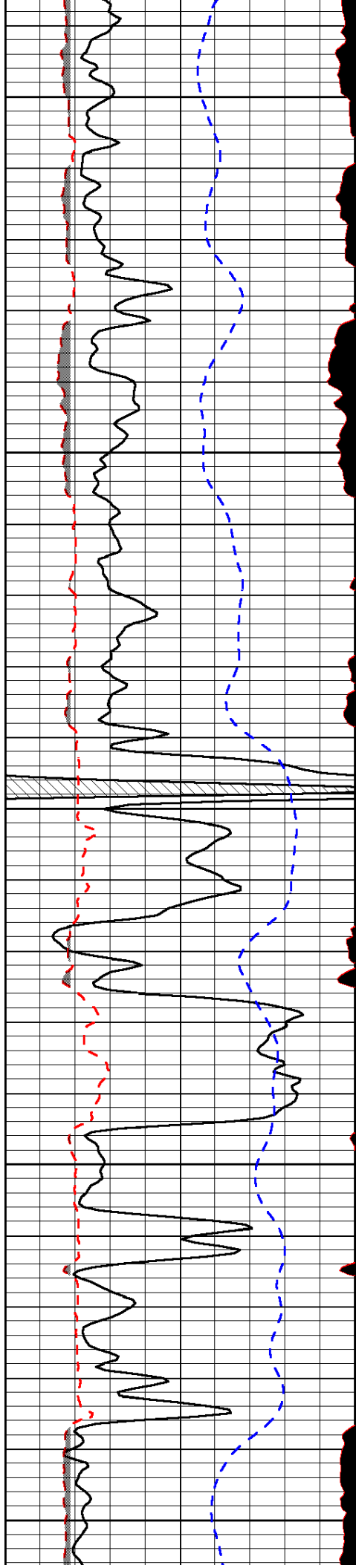
Database File: downingnelson_brenda_1_8hd.db
 Dataset Pathname: DIL/dnstk
 Presentation Format: micro
 Dataset Creation: Mon Apr 21 22:14:22 2014
 Charted by: Depth in Feet scaled 1:240

0	Gamma Ray (GAPI)	150
6	MCAL (in)	16
2.875	Mud Cake (in)	7.875
-200	SP (mV)	0

0	Micro Inverse 1 X 1 (Ohm-m)	40
0	Micro Normal 2" (Ohm-m)	40
10000	Line Weight (lb)	0

LSPD
(ft/min)





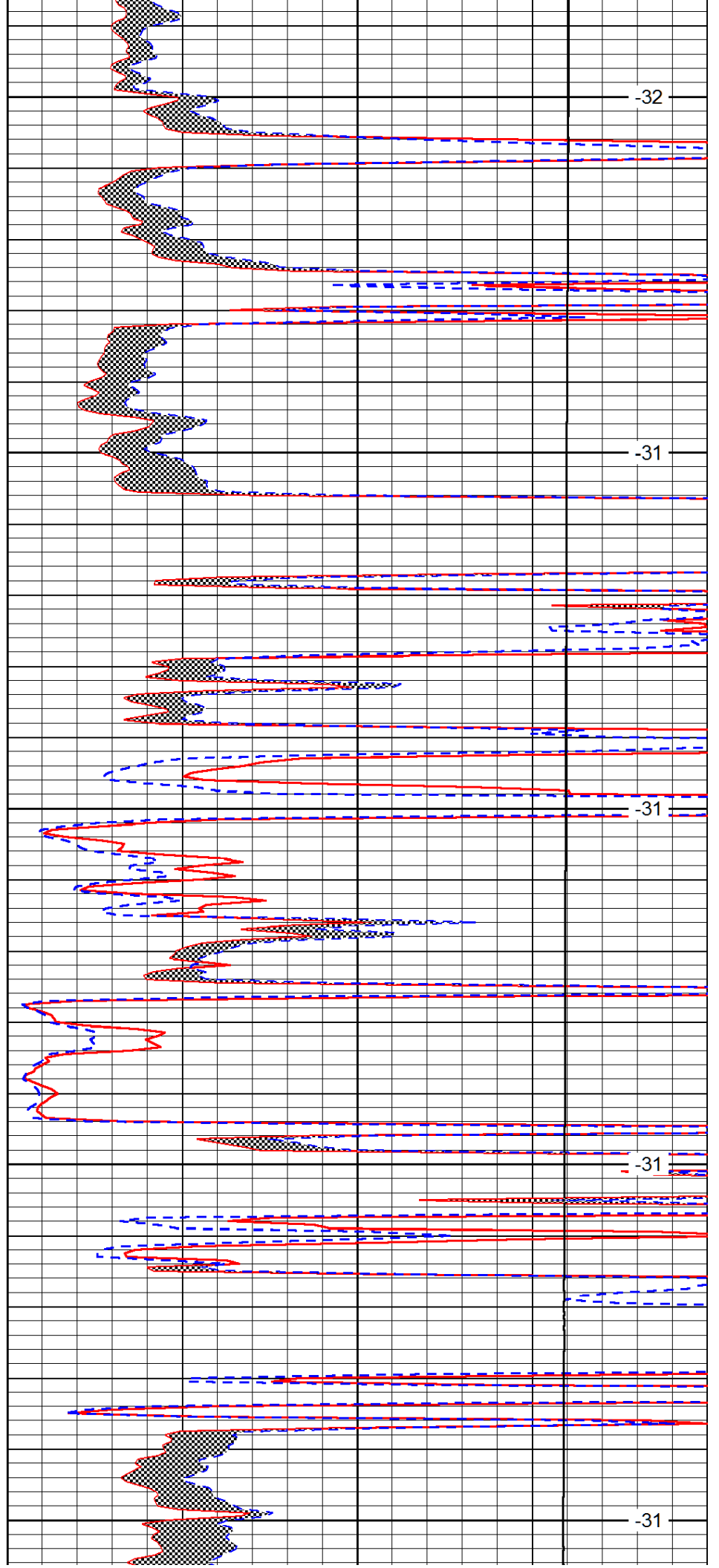
3600

3650

3700

3750

3800



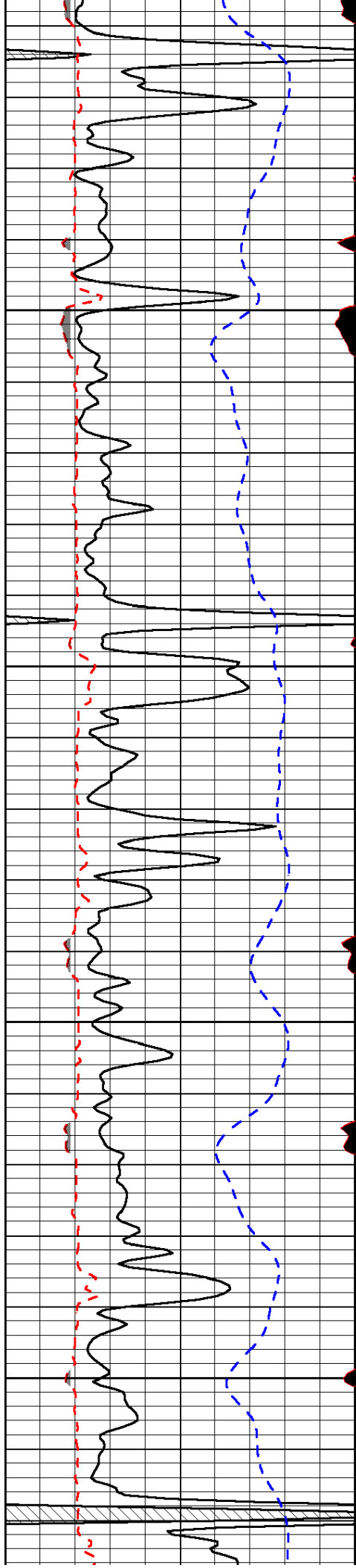
-32

-31

-31

-31

-31

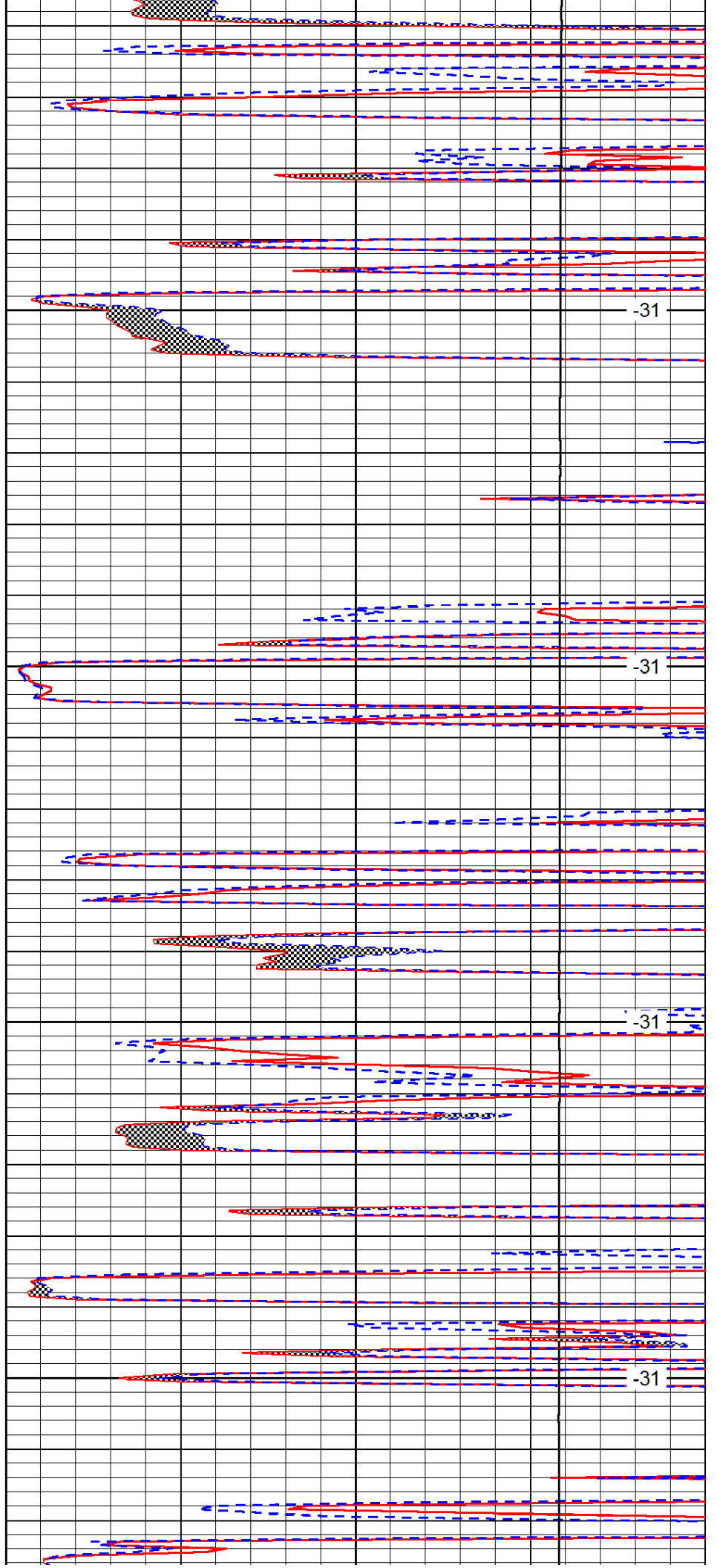


3850

3900

3950

4000

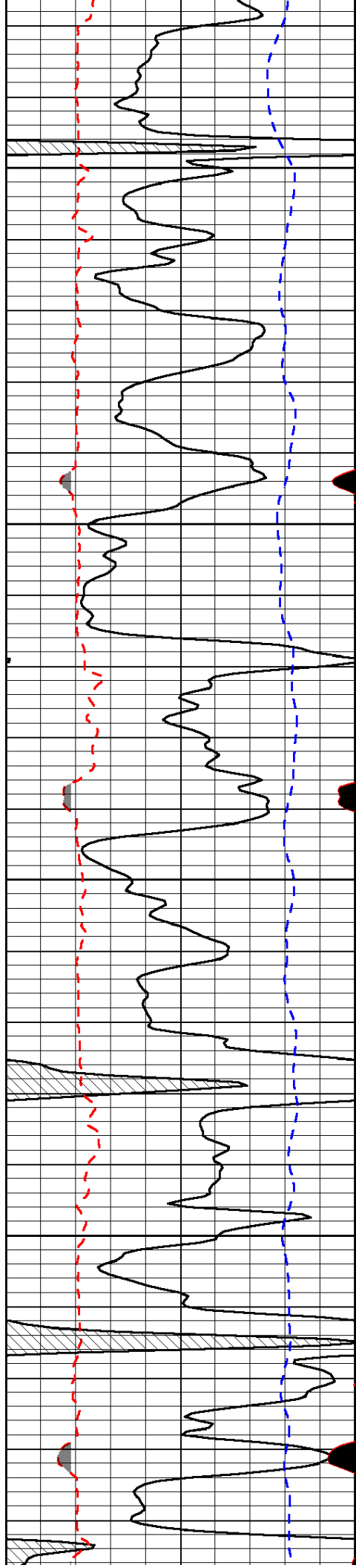


-31

-31

-31

-31

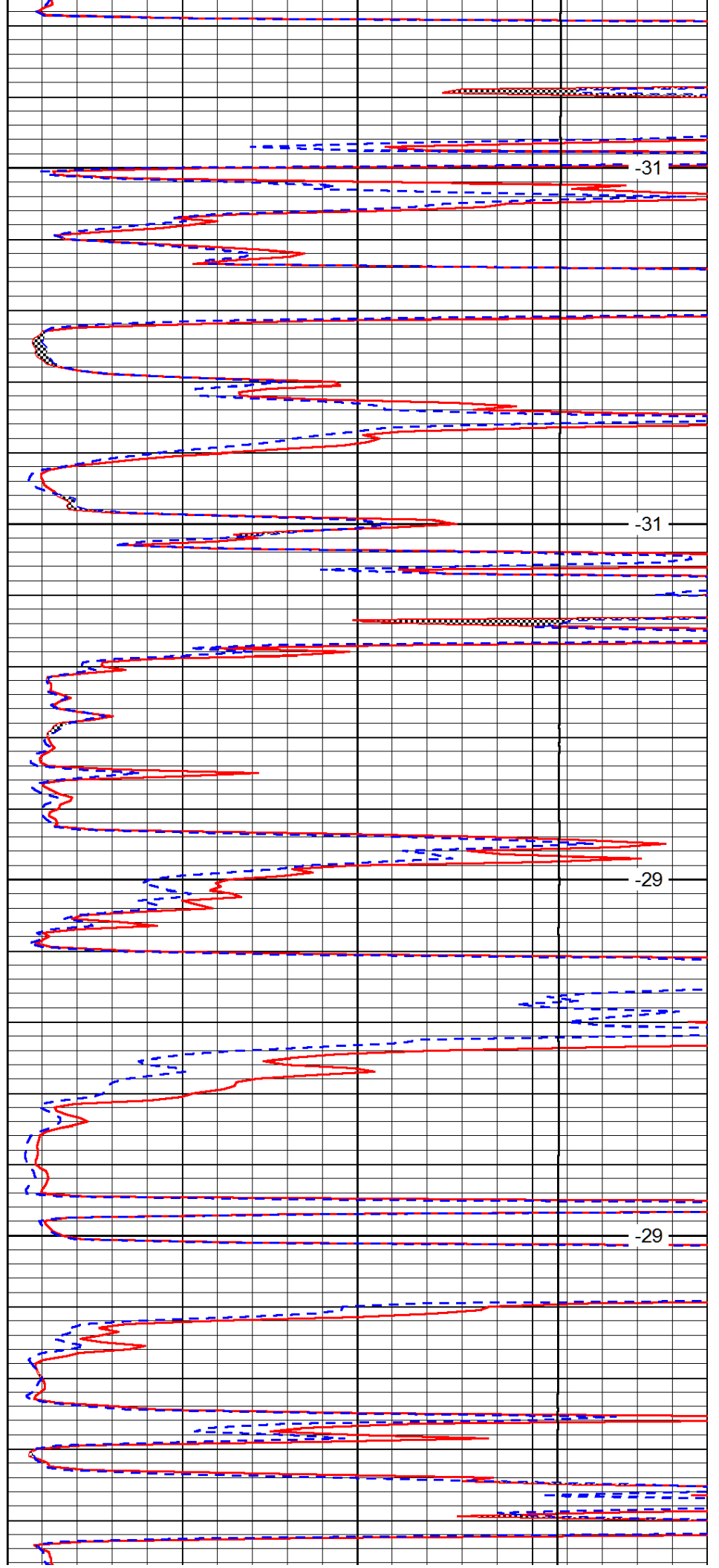


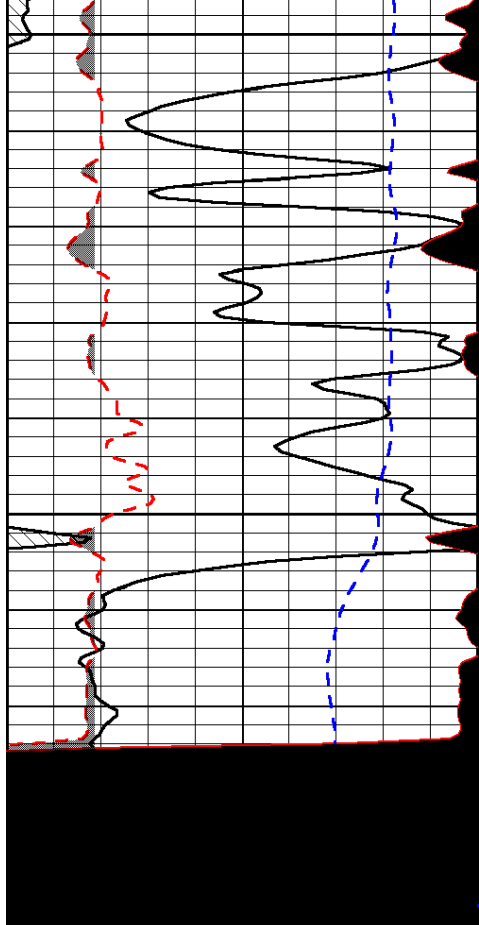
4050

4100

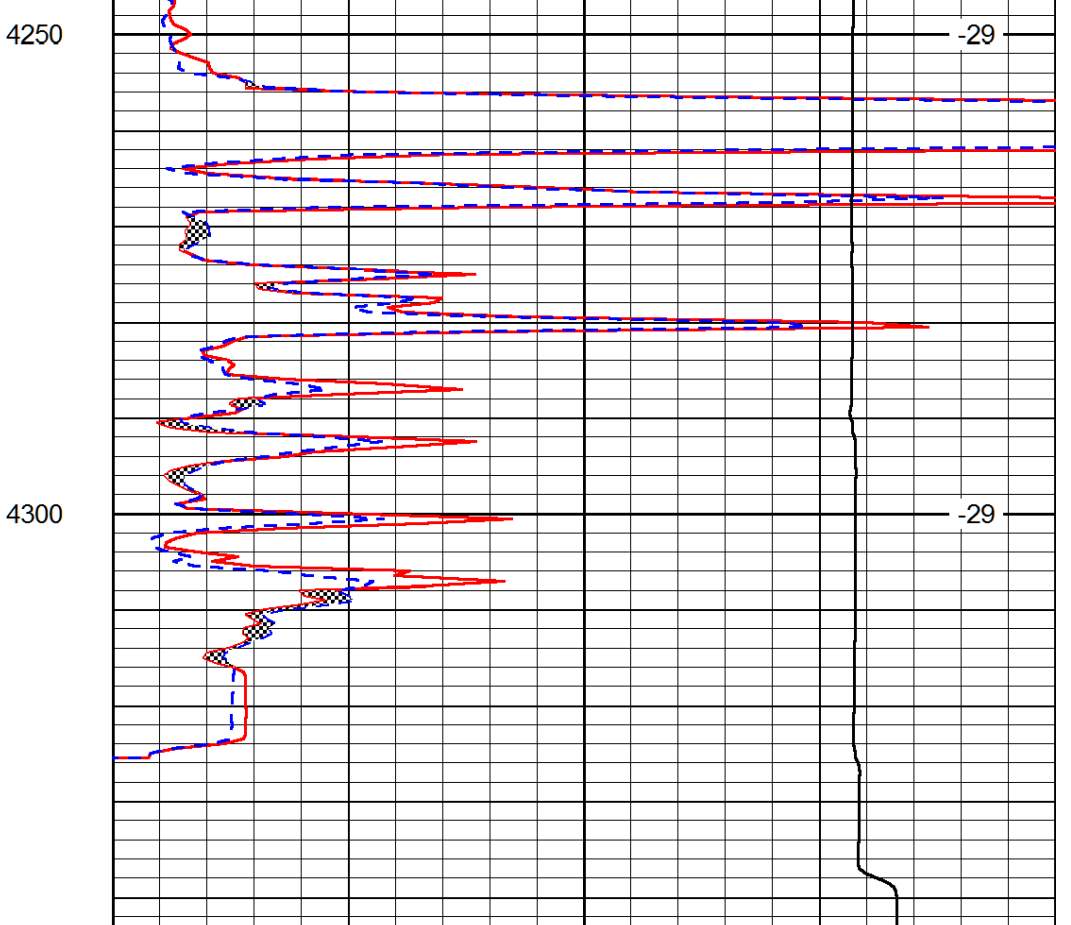
4150

4200





0	Gamma Ray (GAPI)	150
6	MCAL (in)	16
2.875	Mud Cake (in)	7.875
-200	SP (mV)	0



0	Micro Inverse 1 X 1 (Ohm-m)	40
0	Micro Normal 2" (Ohm-m)	40
10000	Line Weight (lb)	0

LSPD (ft/min)
