



Pioneer Energy Services

Dual Induction Log

15-145-21,763-00-00

Company Downing-Nelson Oil Company, Inc.
Well Brenda #1-8
Field Browns Grove
County Pawnee **State** Kansas
Location 1370' FSL & 2310' FEL
Sec: 8 **Twp:** 20S **Rge:** 20W
Other Services
 CNL/CDL
 MEL/BHCS
Elevation
 K.B. 2188
 D.F. 2180
 G.L. 2180

API No.	15-145-21,763-00-00	
Permanent Datum	Ground Level	Elevation 2180
Log Measured From	Kelly Bushing	8 Ft. Above Perm. Datum
Drilling Measured From	Kelly Bushing	
Date	4/21/2104	
Run Number	One	
Depth Driller	4336	
Depth Logger	4337	
Bottom Logged Interval	4336	
Top Log Interval	1150	
Casing Driller	8.625 @ 1171	
Casing Logger	1168	
Bit Size	7.875	
Type Fluid in Hole	Chemical	
Salinity, ppm CL	5000	
Density / Viscosity	9.5 50	
pH / Fluid Loss	9.5 9.2	
Source of Sample	Flowline	
Rm @ Meas. Temp	0.71 @ 87	
Rmf @ Meas. Temp	0.53 @ 87	
Rmc @ Meas. Temp	0.96 @ 87	
Source of Rmf / Rmc	Charts	
Rm @ BHT	0.52 @ 119	
Operating Rig Time	6 Hours	
Max Rec. Temp. F	119	
Equipment Number	15	
Location	Hays	
Recorded By	D.Kerr	
Witnessed By	AI Downing	

<<< Fold Here >>>

All interpretations are opinions based on inferences from electrical or other measurements and we cannot and do not guarantee the accuracy or correctness of any interpretation, and we shall not, except in the case of gross or willful negligence on our part, be liable or responsible for any loss, costs, damages, or expenses incurred or sustained by anyone resulting from any interpretation made by any of our officers, agents or employees. These interpretations are also subject to our general terms and conditions set out in our current Price Schedule.

Comments

Thank you for using Log-Tech, Inc.
 (785) 625-3858

 Alexander KS, 10 South to X RD,
 1/4 West, North Into

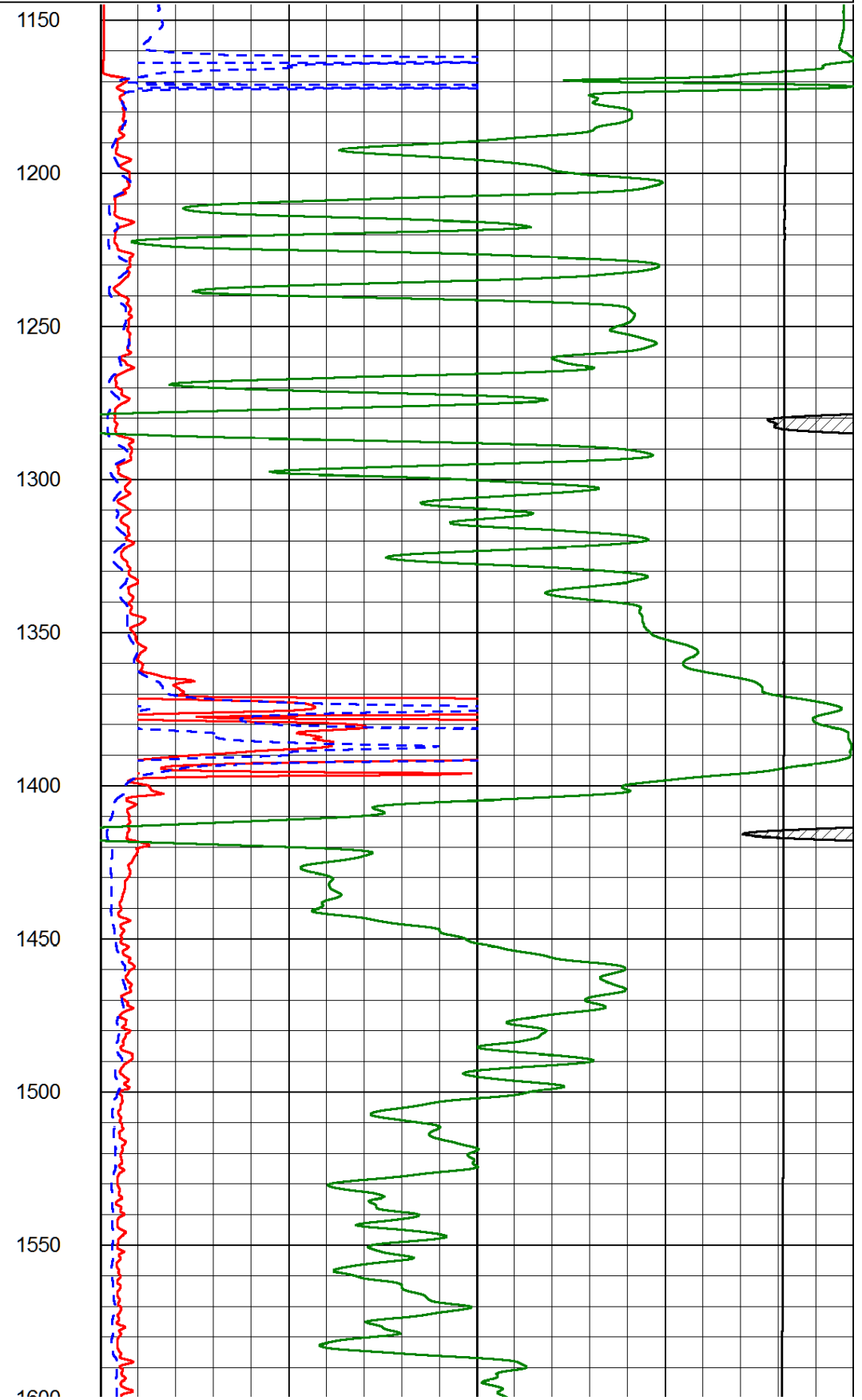
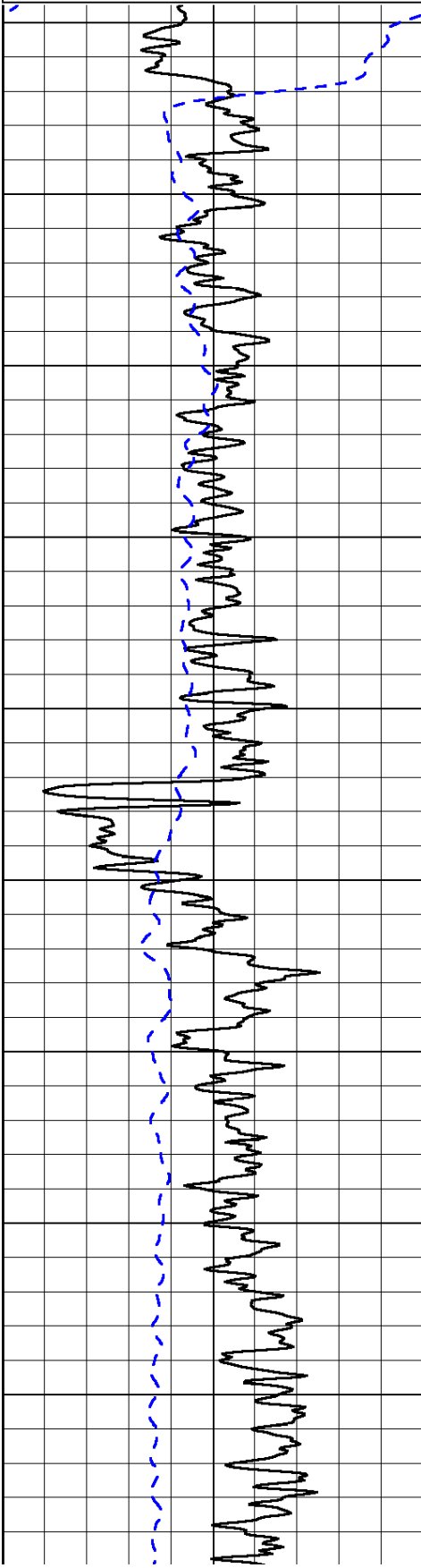
Database File: downingnelson_brenda_1_8hd.db
 Dataset Pathname: DIL/dnstk
 Presentation Format: dil2in
 Dataset Creation: Mon Apr 21 22:14:22 2014
 Charted by: Depth in Feet scaled 1:600

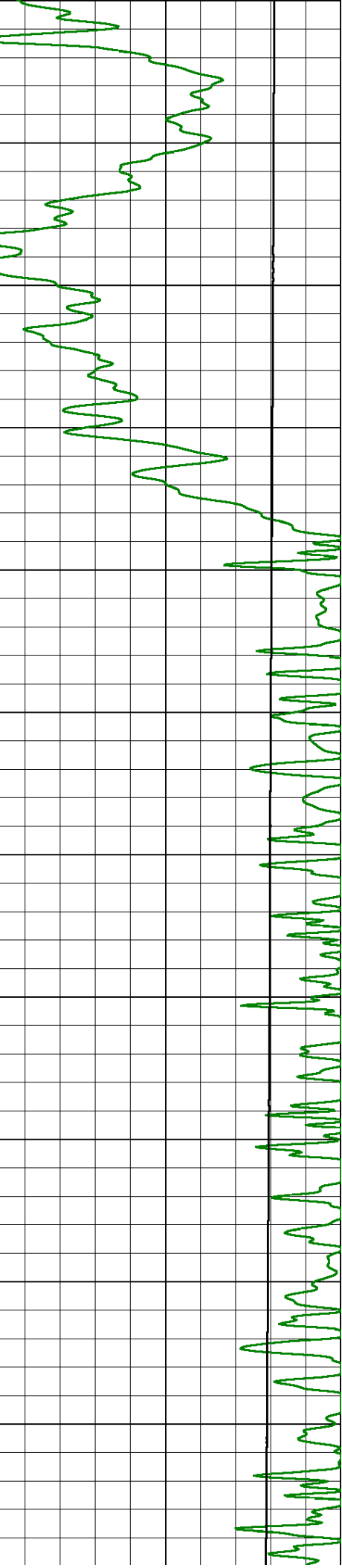
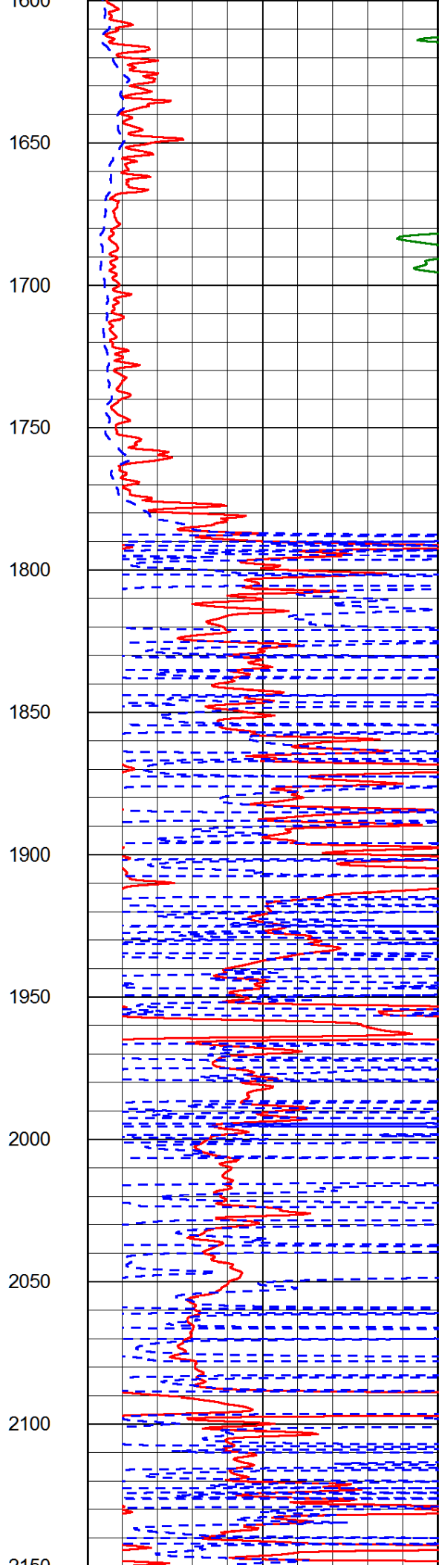
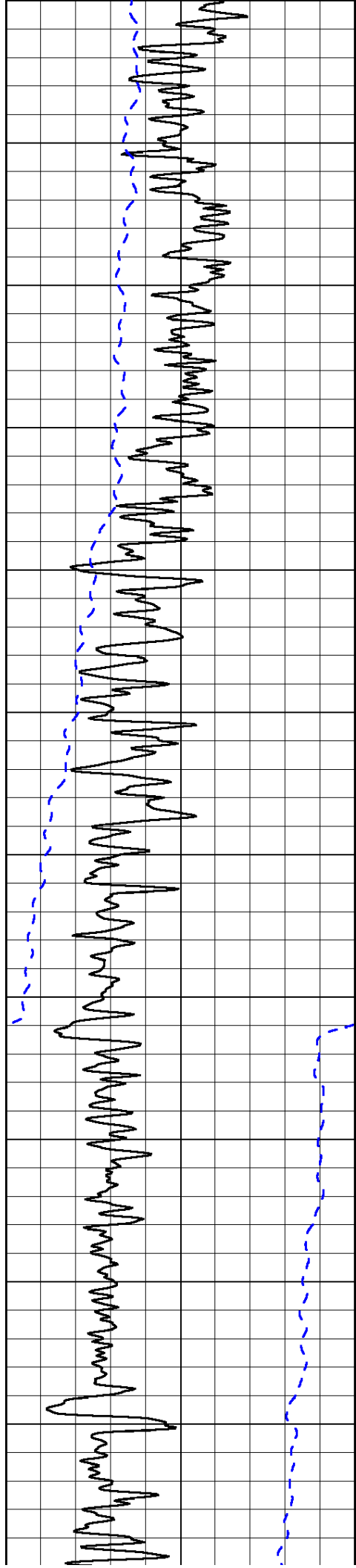
0	Gamma Ray (GAPI)	150
-200	SP (mV)	0

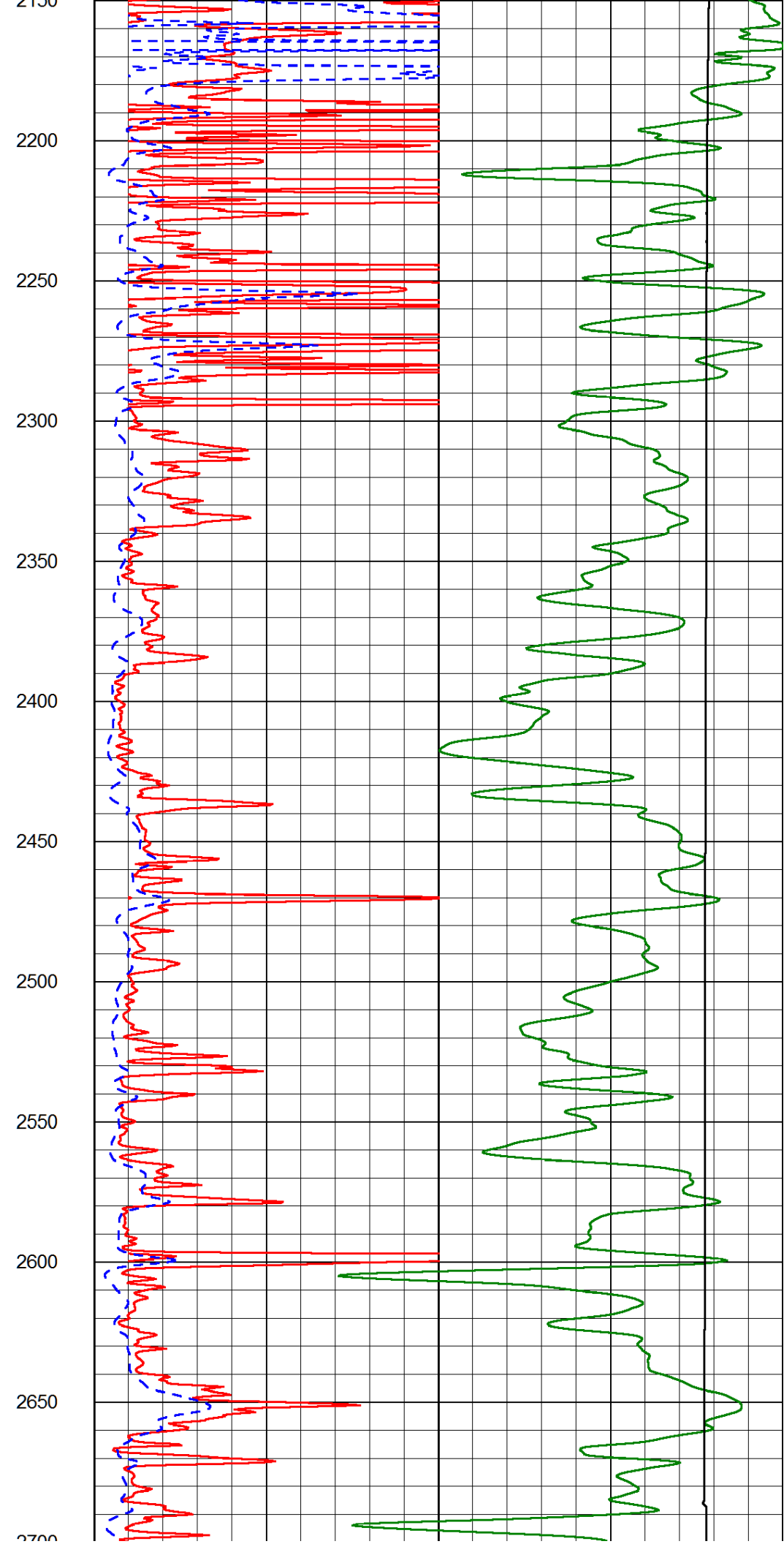
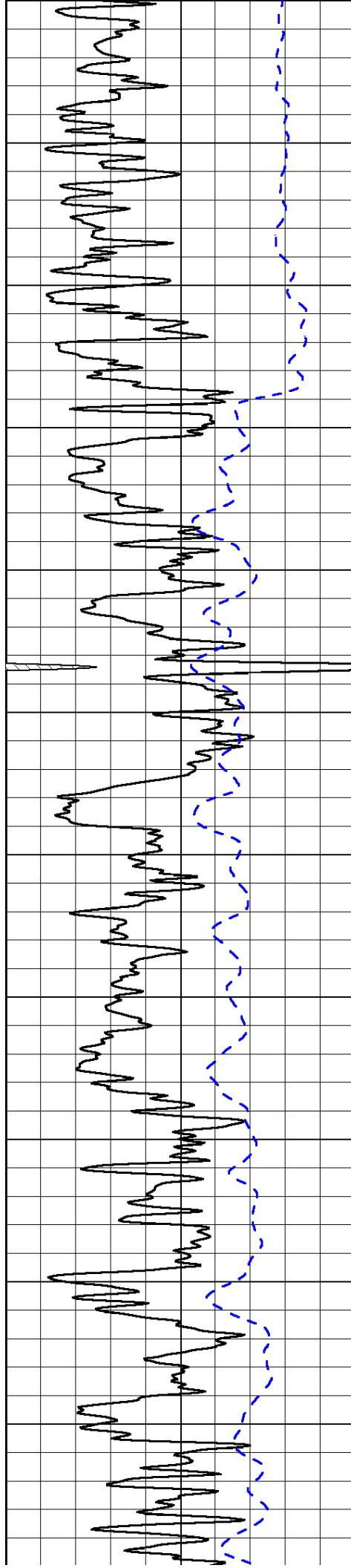
0	Shallow Resistivity (Ohm-m)	50
0	Deep Resistivity (Ohm-m)	50

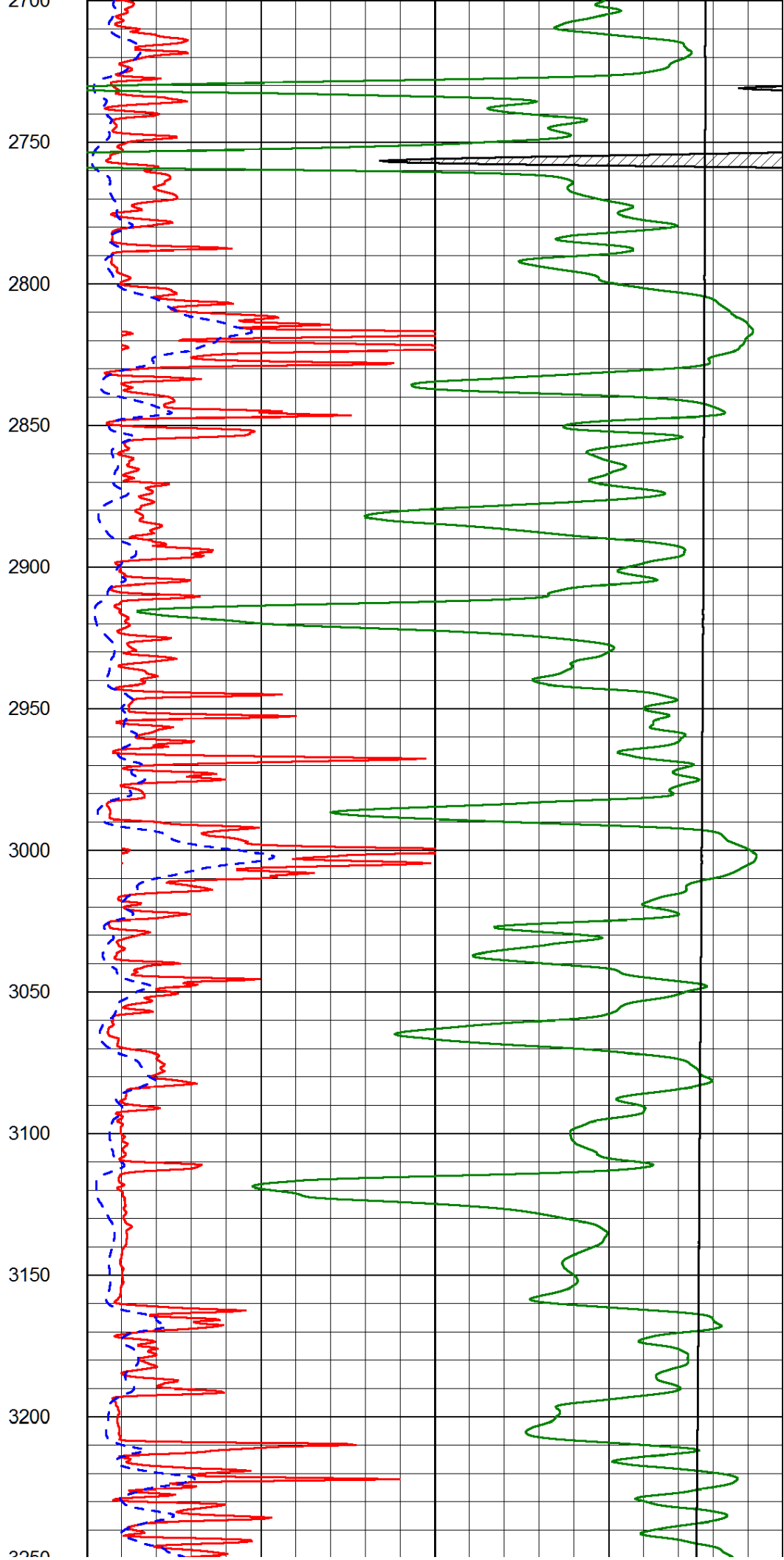
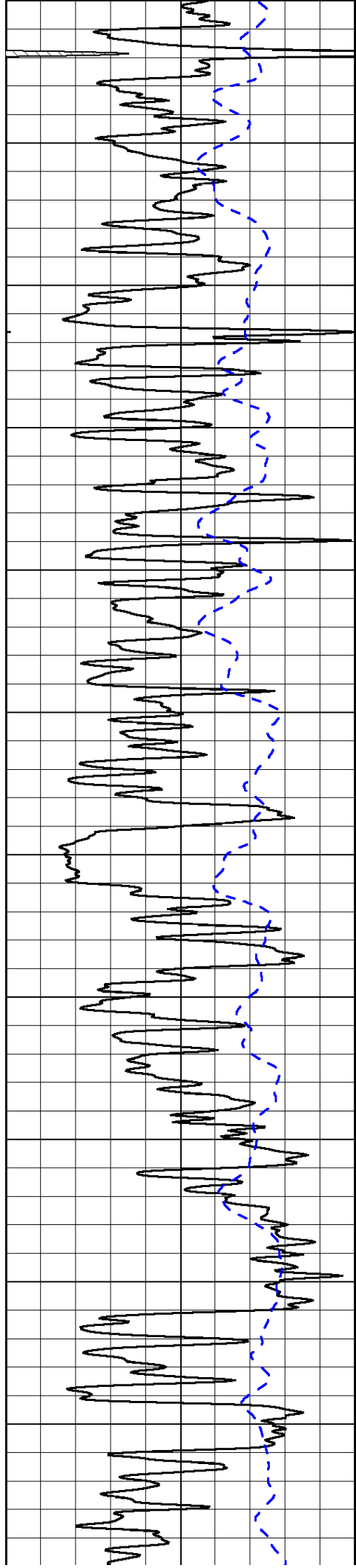
1000	Conductivity (Ohm-m)	0
15000	Line Tension (lb)	0

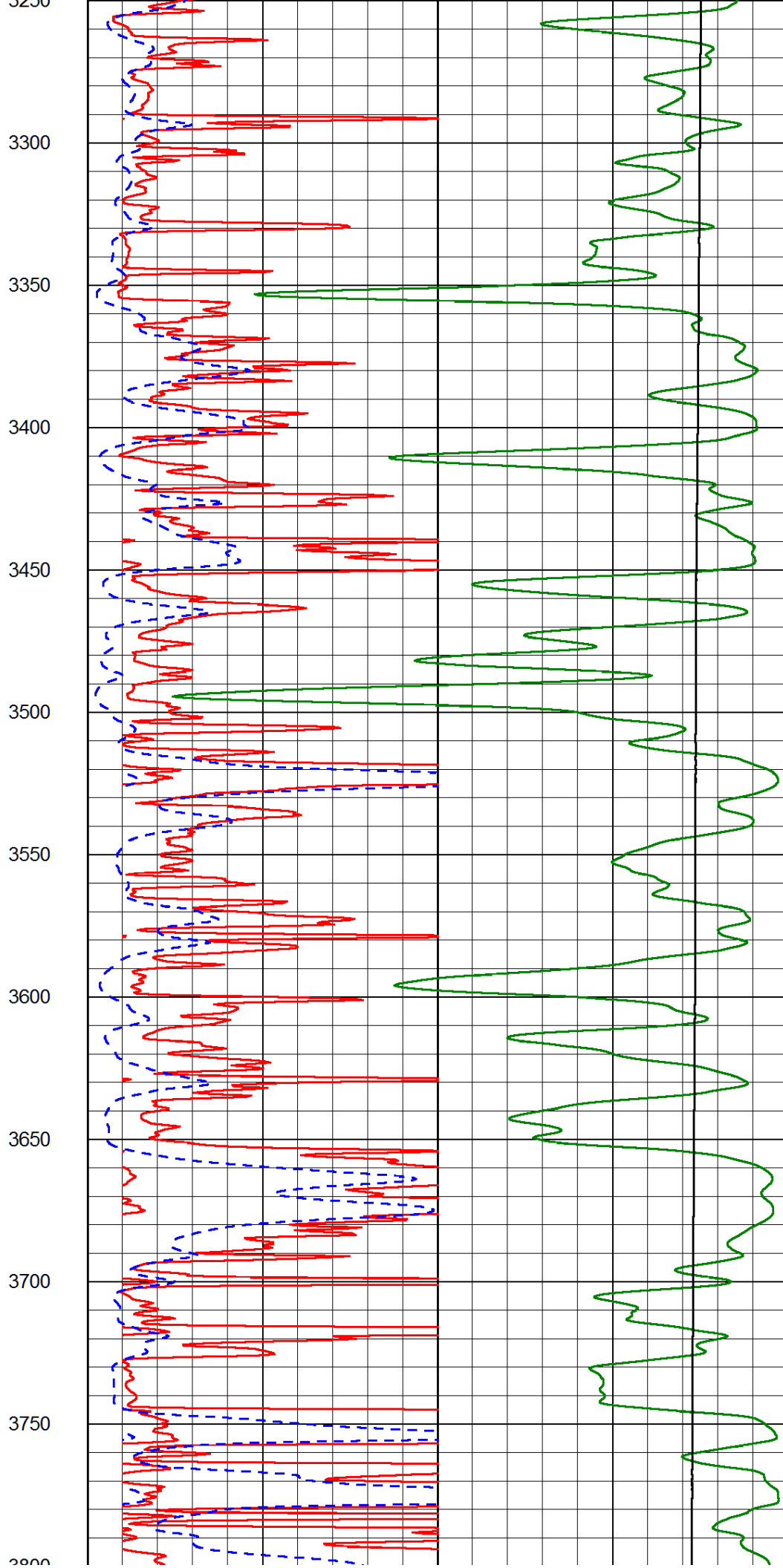
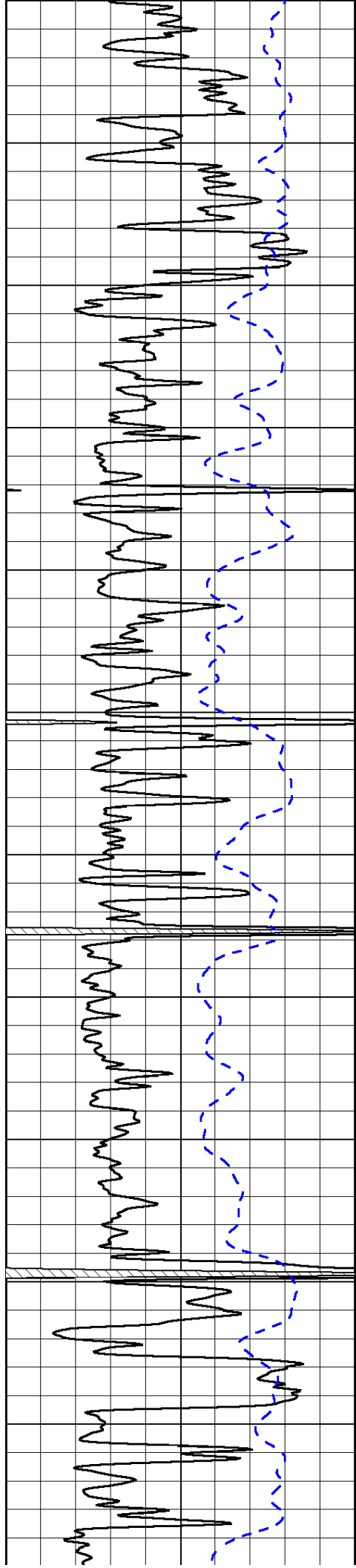
Shallow Resistivity		
50	(Ohm-m)	500
50	Deep Resistivity (Ohm-m)	500

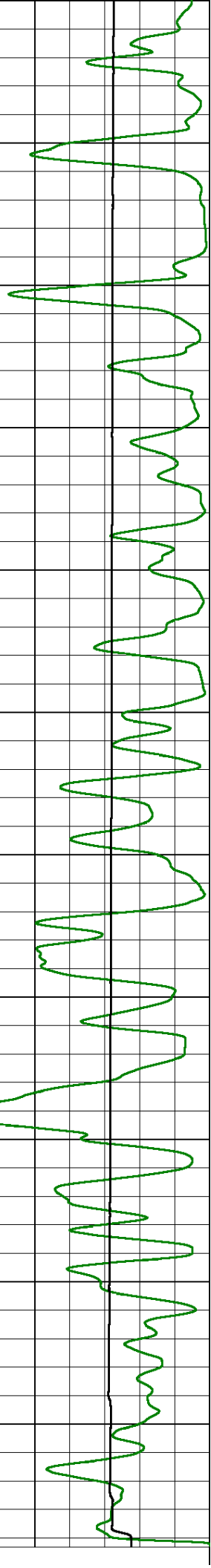
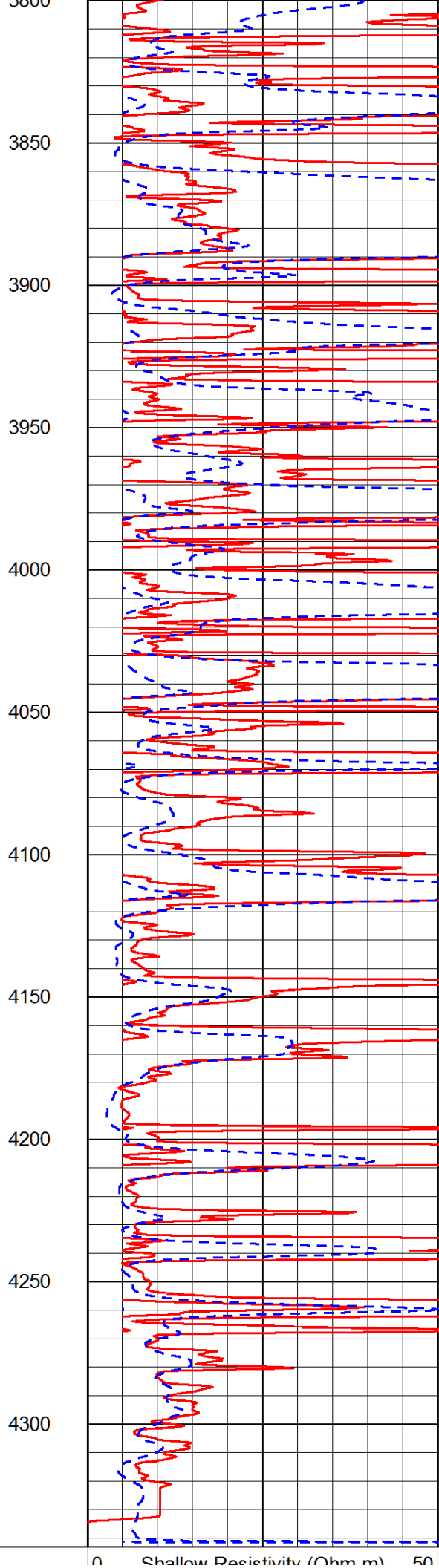
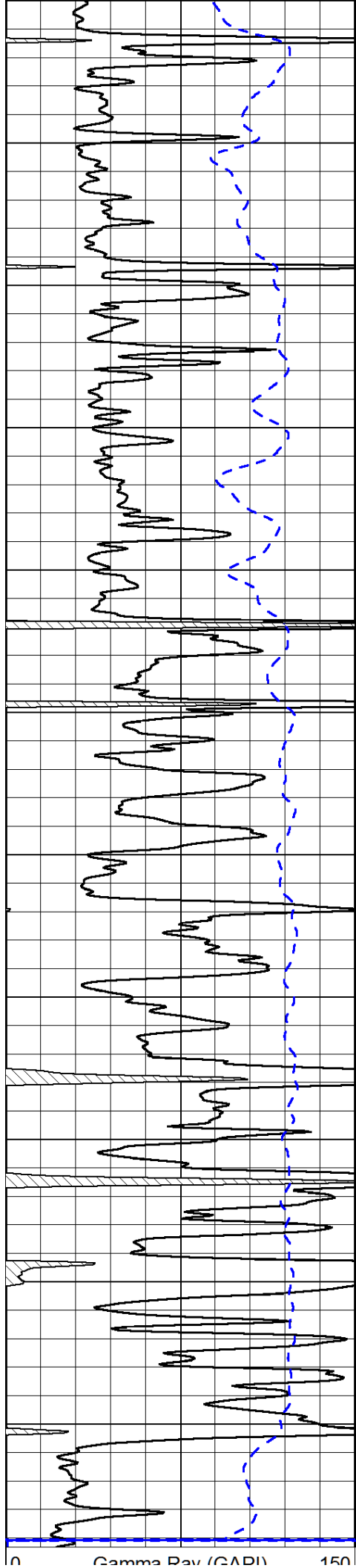












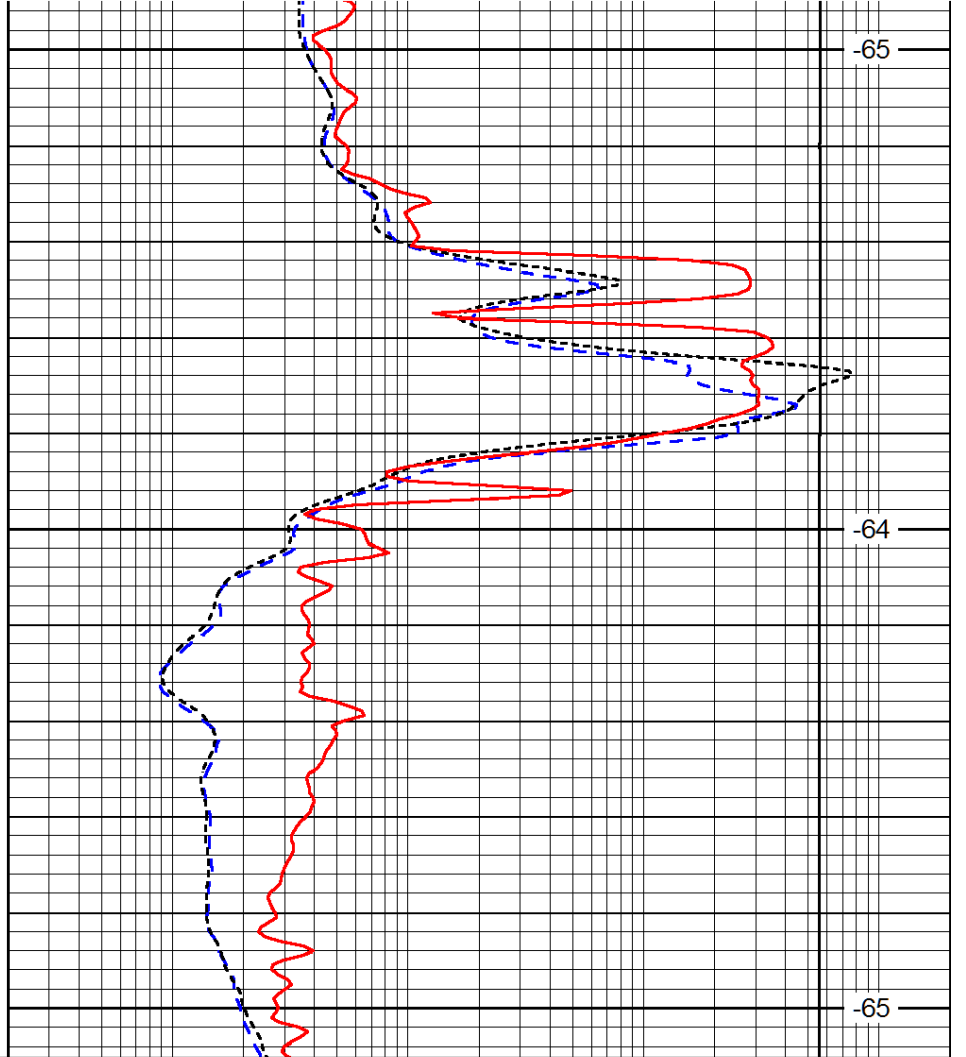
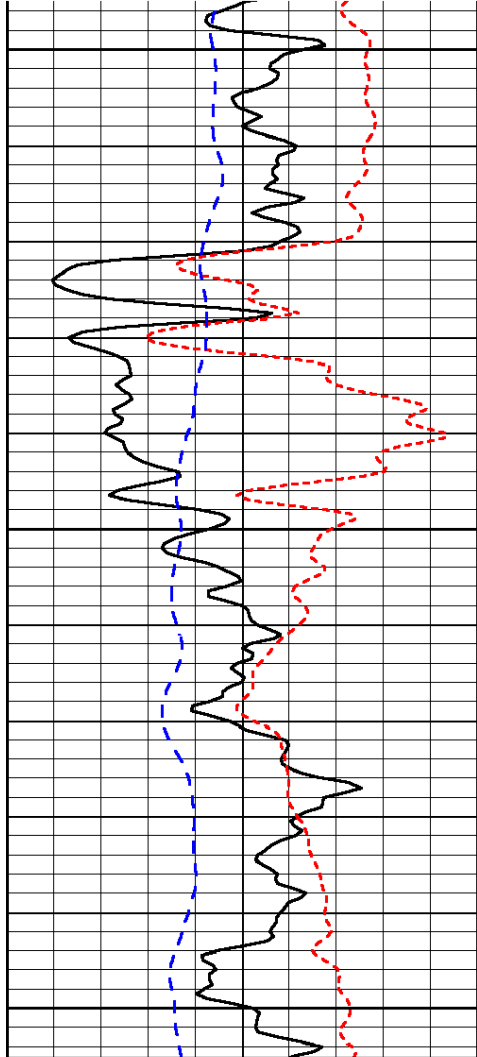
0	Shallow Resistivity (Ohm-m)	50
-200	SP (mV)	0

0	Deep Resistivity (Ohm-m)	50
1000	Conductivity (Ohm-m)	0
15000	Line Tension (lb)	0
50	Shallow Resistivity (Ohm-m)	500
50	Deep Resistivity (Ohm-m)	500

Database File: downingnelson_brenda_1_8hd.db
 Dataset Pathname: DIL/dnstk
 Presentation Format: dil
 Dataset Creation: Mon Apr 21 22:14:22 2014
 Charted by: Depth in Feet scaled 1:240

0	Gamma Ray (GAPI)	150
-160	RXO/RT	40
-200	SP (mV)	0

0.2	Deep Resistivity (Ohm-m)	2000
0.2	Medium Resistivity (Ohm-m)	2000
0.2	Shallow Resistivity (Ohm-m)	2000
10000	Line Tension (lb)	0
	LSPD (ft/min)	



0	Gamma Ray (GAPI)	150
-160	RXO/RT	40
-200	SP (mV)	0

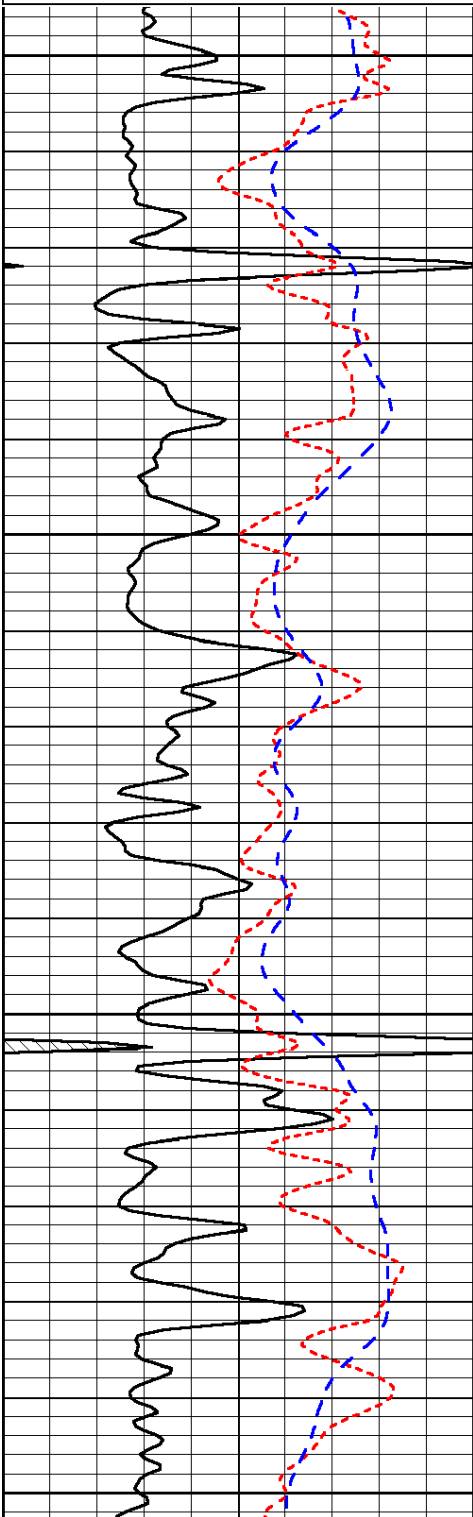
0.2	Deep Resistivity (Ohm-m)	2000
0.2	Medium Resistivity (Ohm-m)	2000
0.2	Shallow Resistivity (Ohm-m)	2000
10000	Line Tension (lb)	0
	LSPD	

Database File: downingnelson_brenda_1_8hd.db
Dataset Pathname: DIL/dnstk
Presentation Format: dil
Dataset Creation: Mon Apr 21 22:14:22 2014
Charted by: Depth in Feet scaled 1:240

0	Gamma Ray (GAPI)	150
-160	RXO/RT	40
-200	SP (mV)	0

0.2	Deep Resistivity (Ohm-m)	2000
0.2	Medium Resistivity (Ohm-m)	2000
0.2	Shallow Resistivity (Ohm-m)	2000
10000	Line Tension (lb)	0

LSPD
(ft/min)

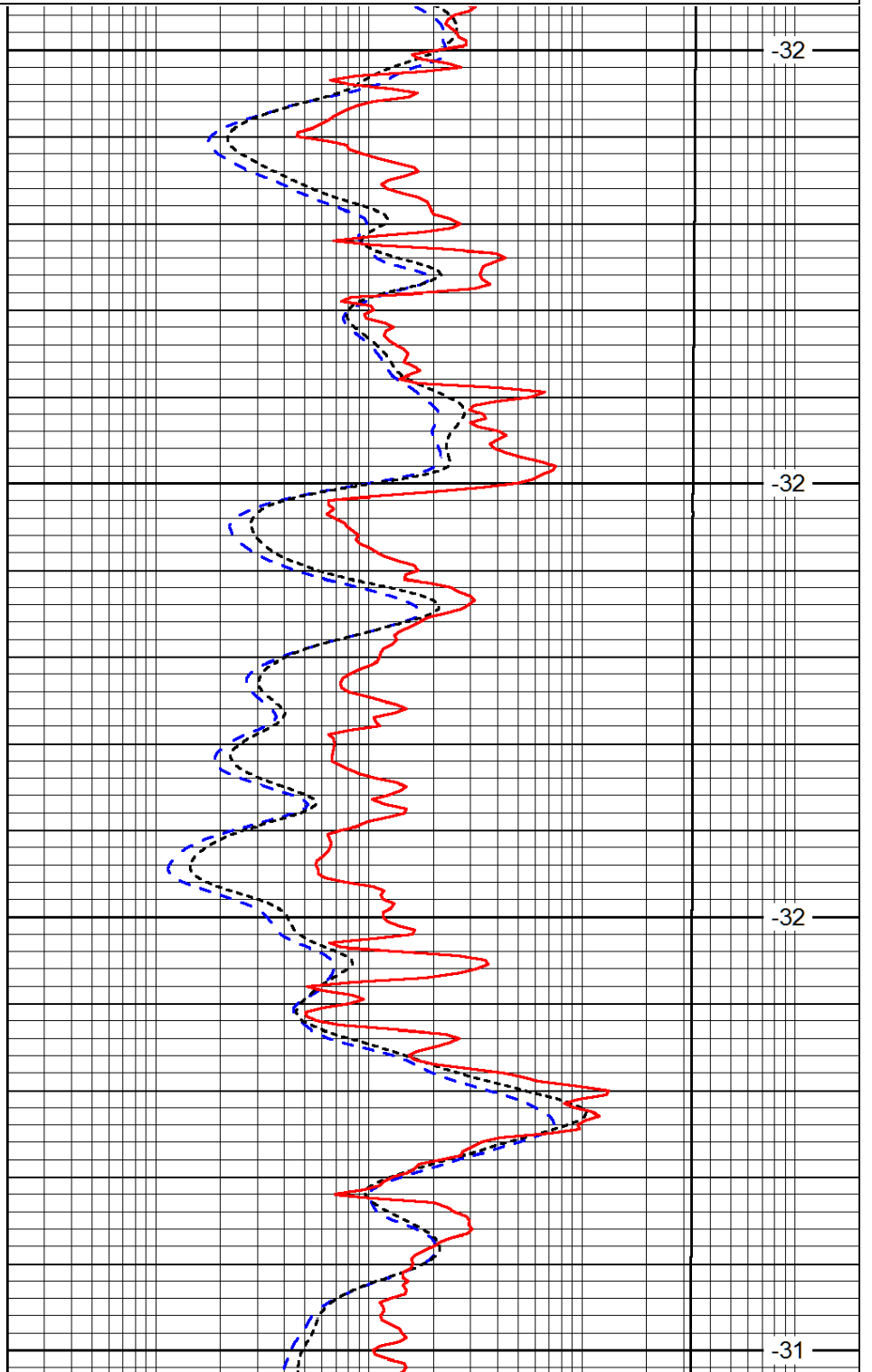


3400

3450

3500

3550

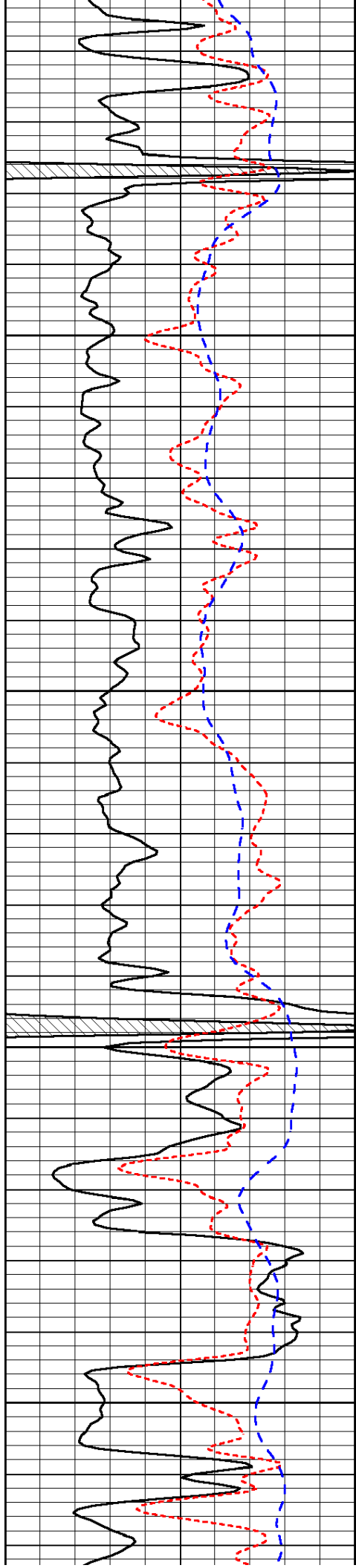


-32

-32

-32

-31

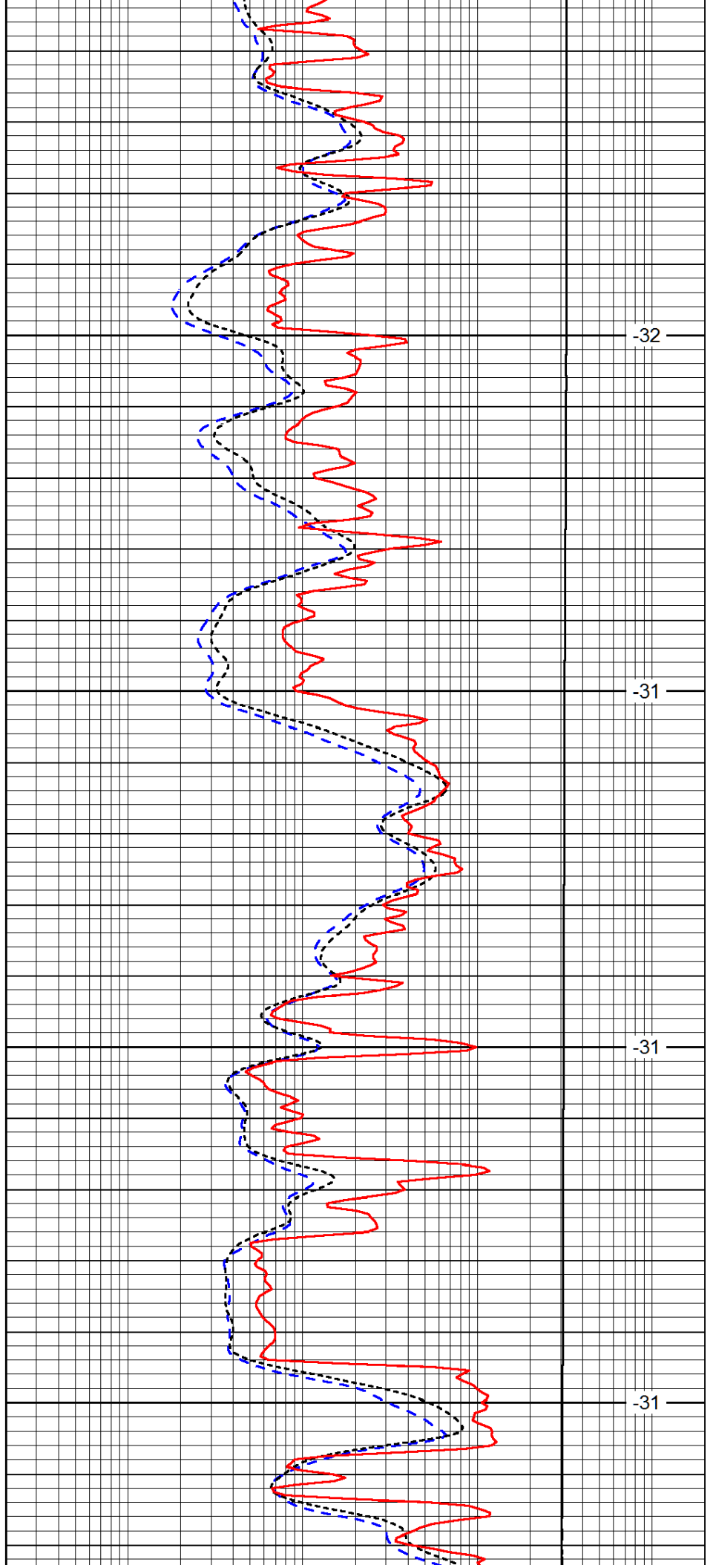


3600

3650

3700

3750

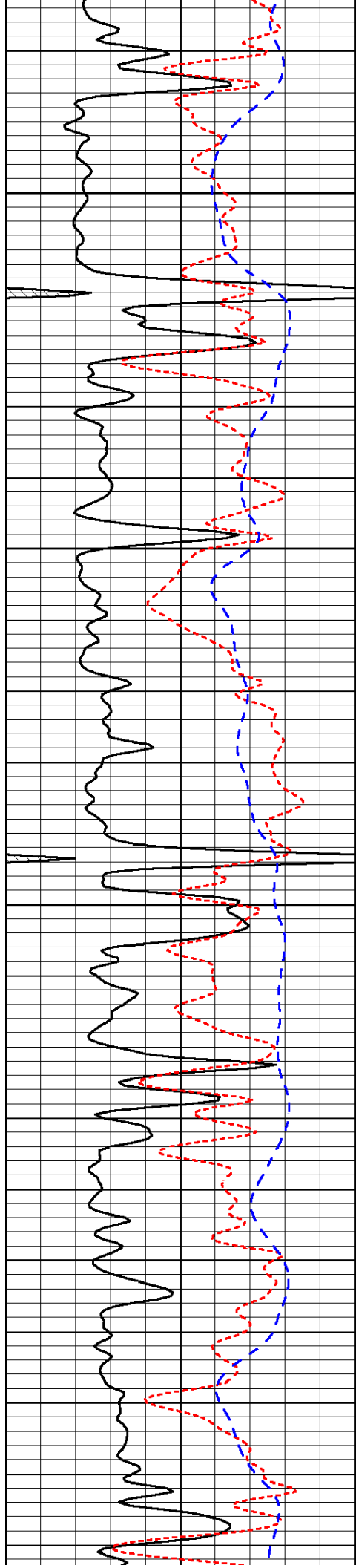


-32

-31

-31

-31

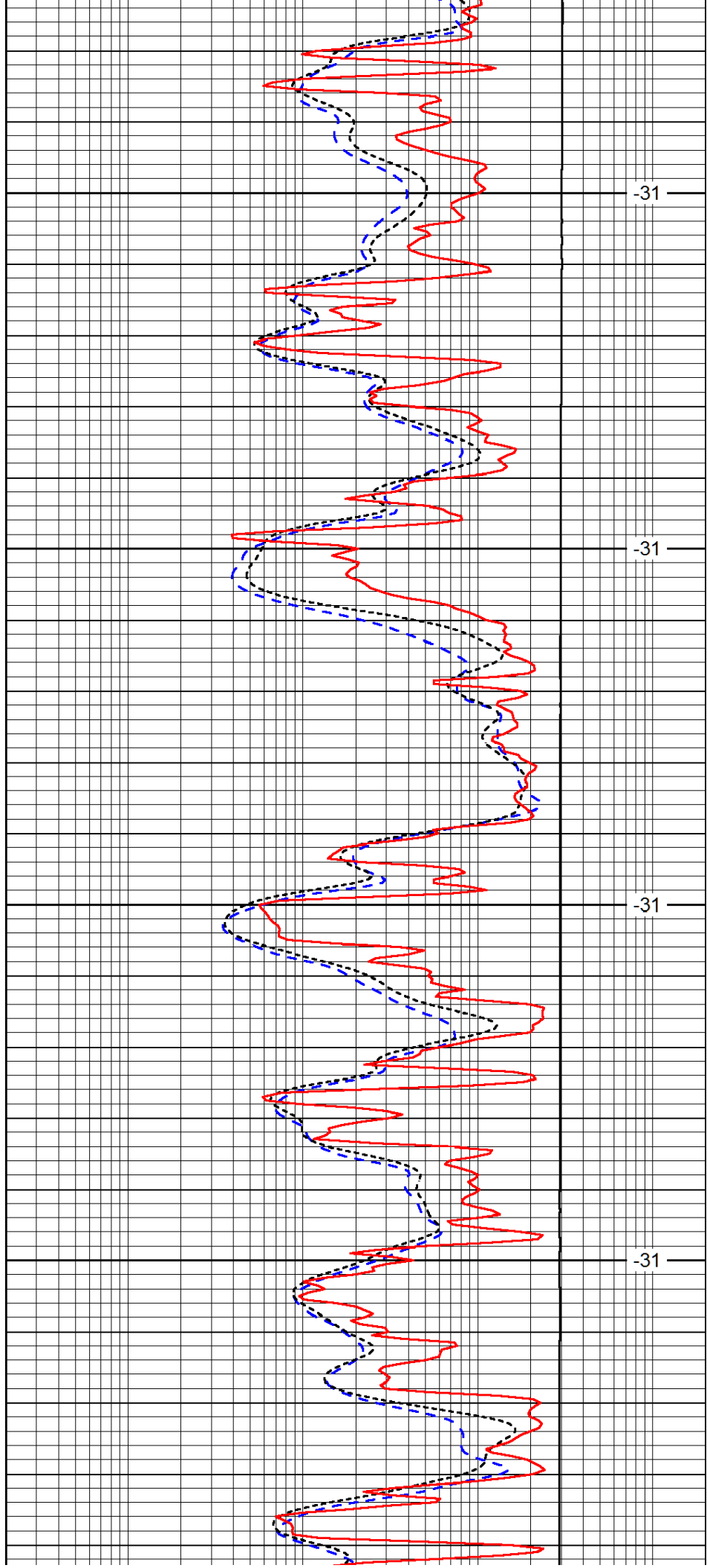


3800

3850

3900

3950

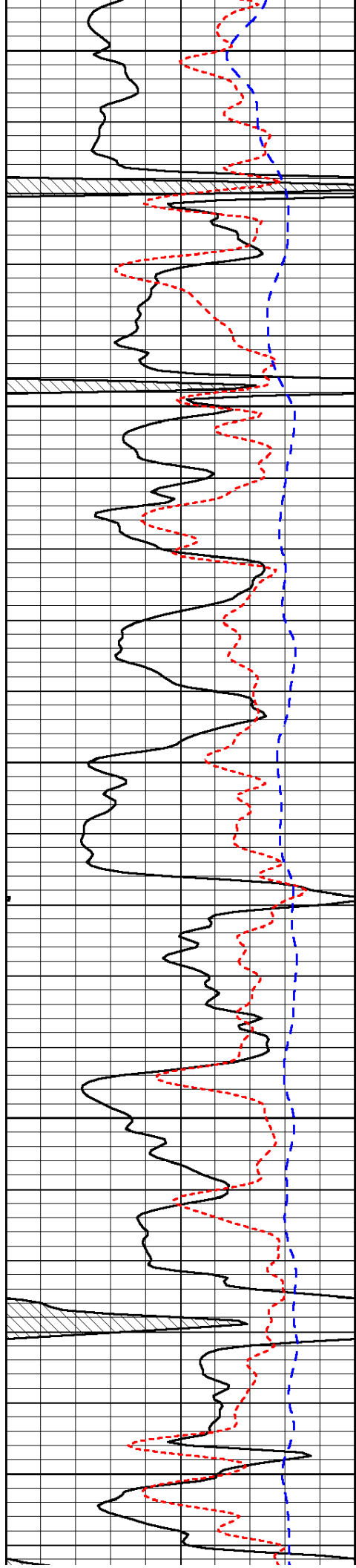


-31

-31

-31

-31



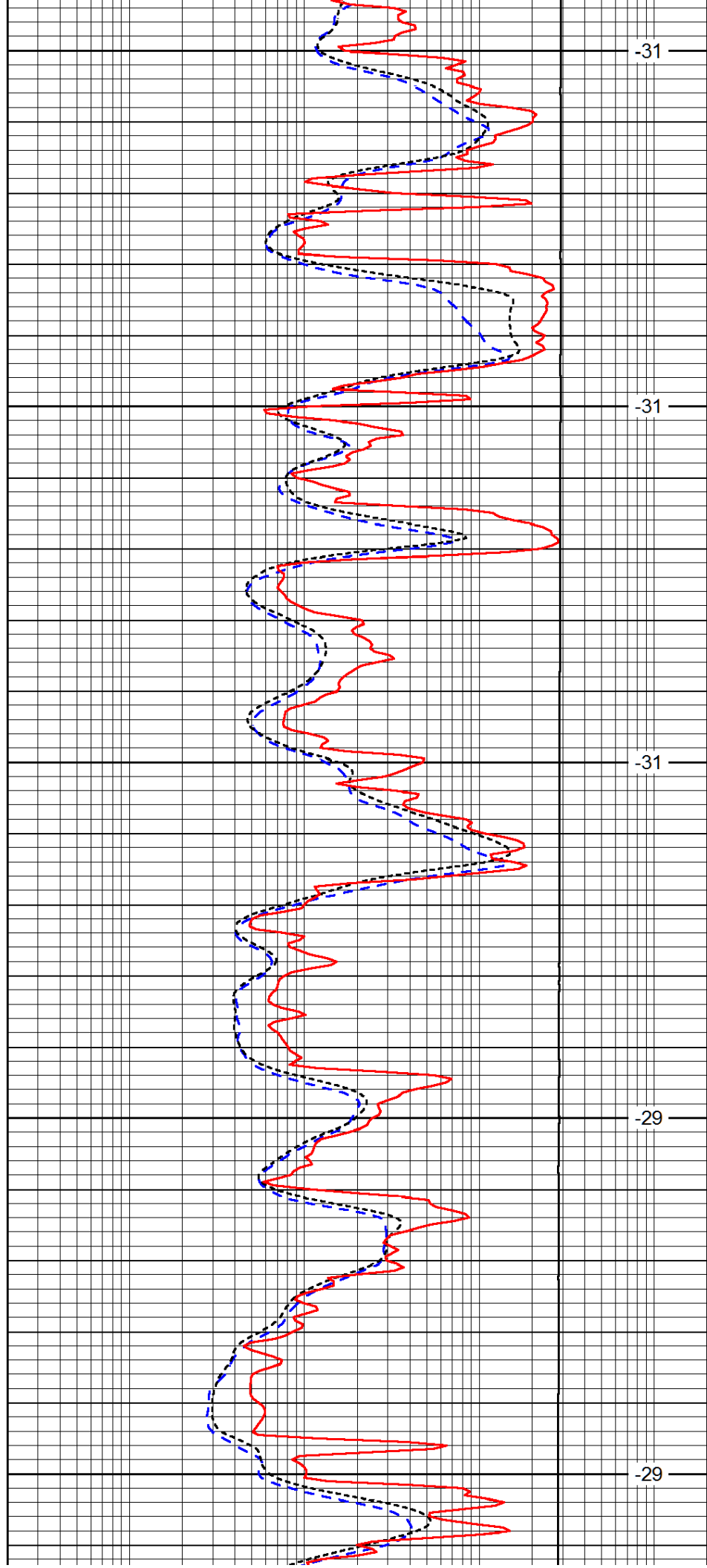
4000

4050

4100

4150

4200



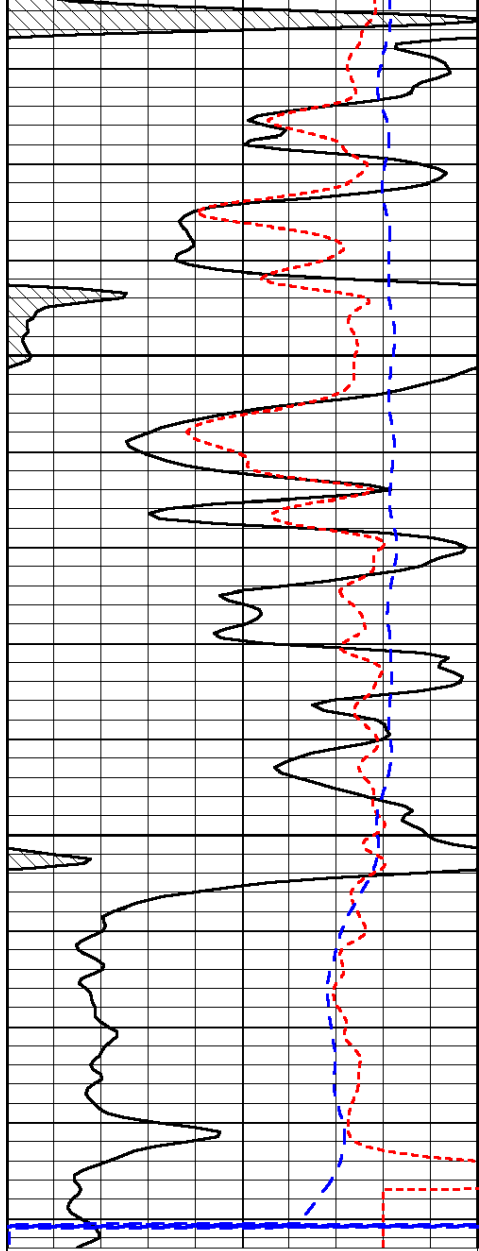
-31

-31

-31

-29

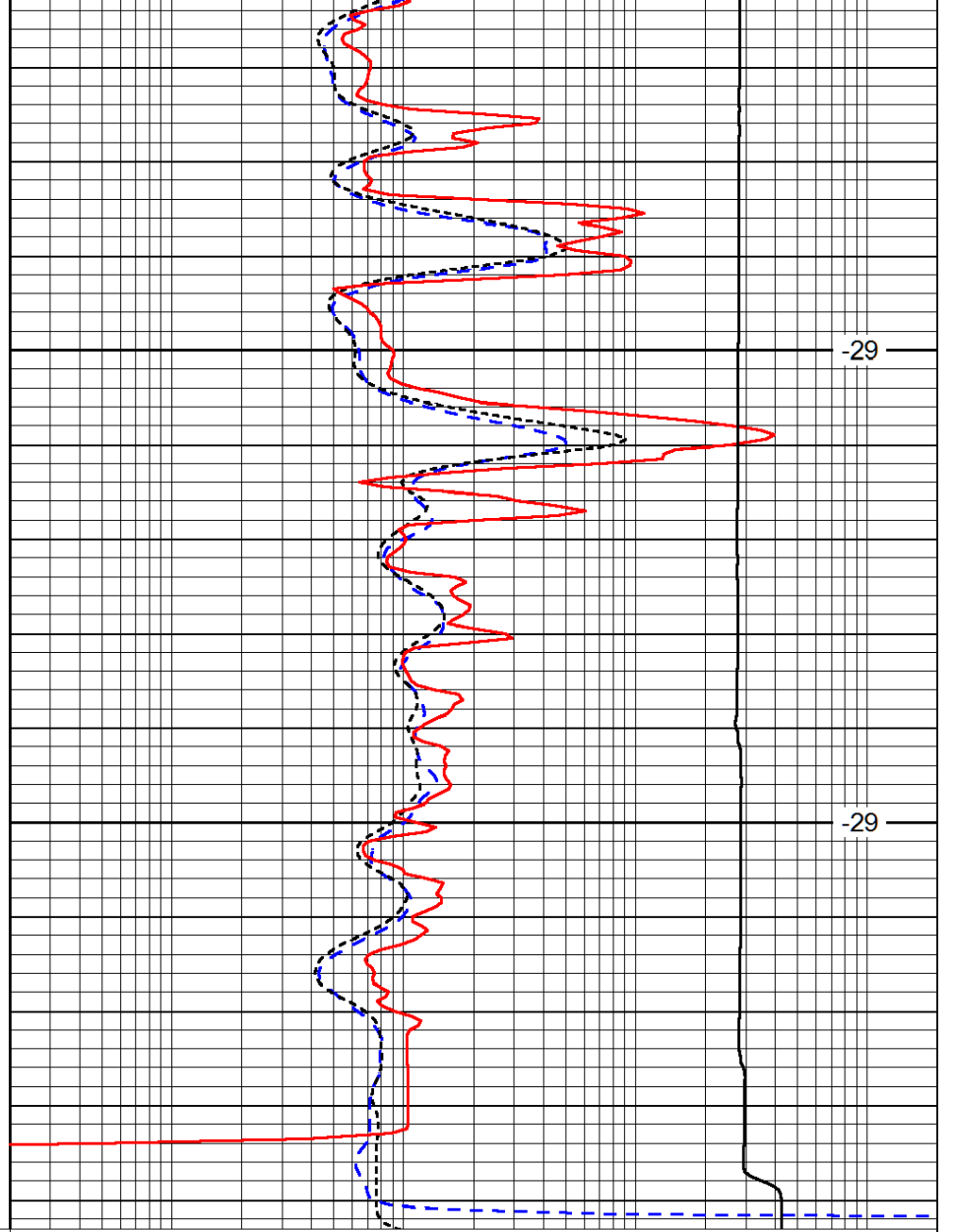
-29



0	Gamma Ray (GAPI)	150
-160	RXO/RT	40
-200	SP (mV)	0

4250

4300



-29

-29

0.2	Deep Resistivity (Ohm-m)	2000
0.2	Medium Resistivity (Ohm-m)	2000
0.2	Shallow Resistivity (Ohm-m)	2000
10000	Line Tension (lb)	0

LSPD
(ft/min)