



**COMPLETION
& PRODUCTION
SERVICES CO.**

**SONIC
LOG**

Company CHARTER ENERGY, INC.
Well WELLS #1
Field CONVERSE
County BARTON
State KANSAS

Company CHARTER ENERGY, INC.
Well WELLS #1
Field CONVERSE
County BARTON
State KANSAS

Location: API # : 15-009-25960-0000
1120' FSL & 1627' FEL
NE - NE - SW - SE
SEC 18 TWP 20S RGE 15W
Permanent Datum GROUND LEVEL Elevation 2067
Log Measured From KELLY BUSHING 7' A.G.L.
Drilling Measured From KELLY BUSHING
Other Services
CDL/CNL
DIL/MEL
Elevation
K.B. 2074
D.F. 2072
G.L. 2067

Date	4/8/14		
Run Number	TWO		
Depth Driller	3890		
Depth Logger	3892		
Bottom Logged Interval	3882		
Top Log Interval	1050		
Casing Driller	8 5/8" @ 1080		
Casing Logger	1080		
Bit Size	7 7/8"		
Type Fluid in Hole	CHEMICAL MUD	CHLORIDES 7300 PPM	
Density / Viscosity	9.0/51		
pH / Fluid Loss	9.0/7.2		
Source of Sample	FLOWLINE		
Rm @ Meas. Temp	.60 @ 80F		
Rmt @ Meas. Temp	.45 @ 80F		
Rmc @ Meas. Temp	.72 @ 80F		
Source of Rmf / Rmc	MEASUREMENT		
Rm @ BHT	.41 @ 115F		
Time Circulation Stopped	2 HOURS		
Time Logger on Bottom			
Maximum Recorded Temperature	115F		
Equipment Number	4010		
Location	HAYS, KANSAS		
Recorded By	JASON CAPPELLUCCI		
Witnessed By	WYATT URBAN		

<<< Fold Here >>>

All interpretations are opinions based on inferences from electrical or other measurements and we cannot and do not guarantee the accuracy or correctness of any interpretation, and we shall not, except in the case of gross or willful negligence on our part, be liable or responsible for any loss, costs, damages, or expenses incurred or sustained by anyone resulting from any interpretation made by any of our officers, agents or employees. These interpretations are also subject to our general terms and conditions set out in our current Price Schedule.

Comments

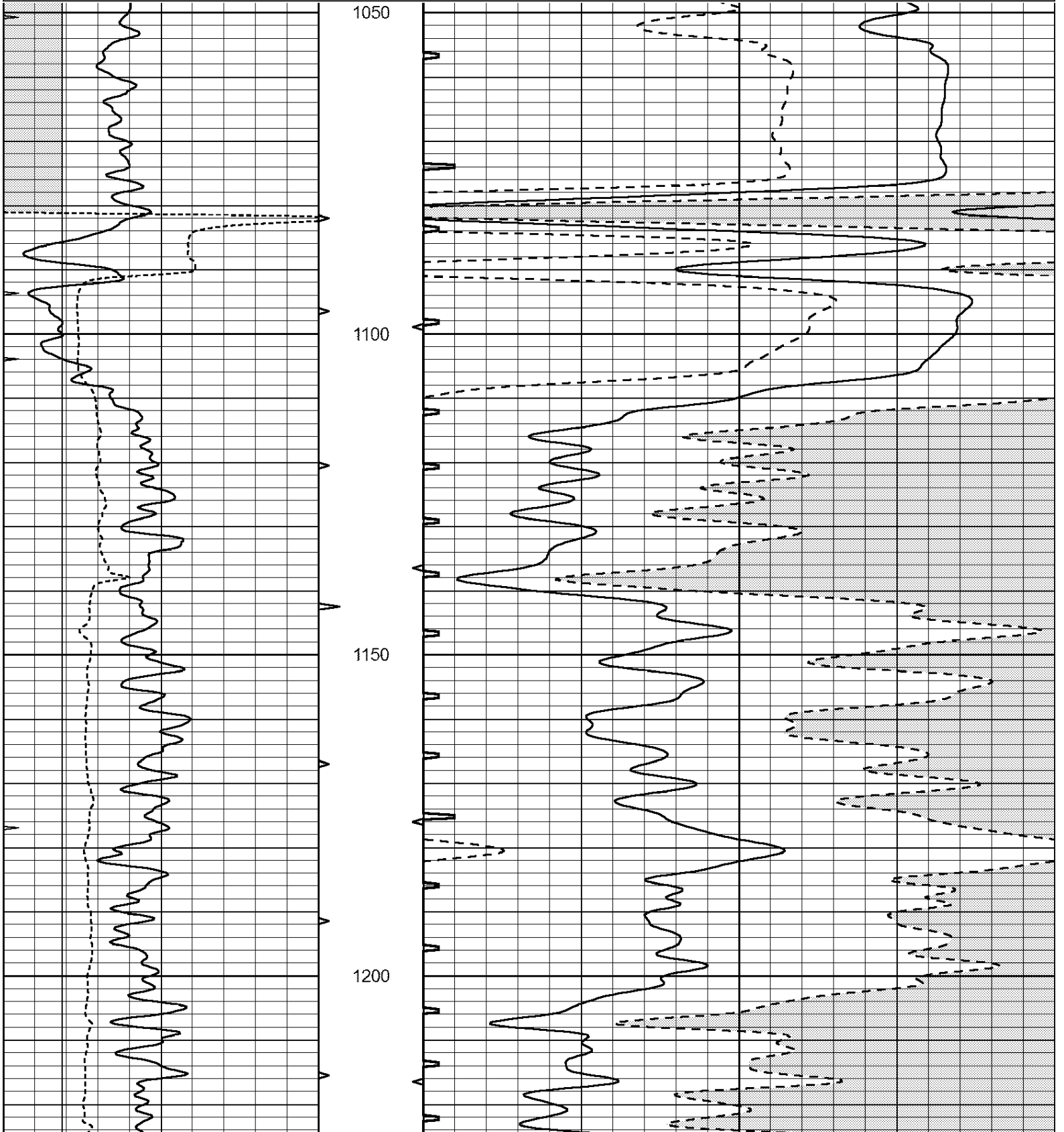
THANK YOU FOR USING NABORS, HAYS, KS. (785) 628-6395
DIRECTIONS:
PAWNEE ROCK, KS. - ON EAST SIDE (RD. SW 110) 3 NORTH TO RD. 40
2 1/2 WEST - NORTH INTO

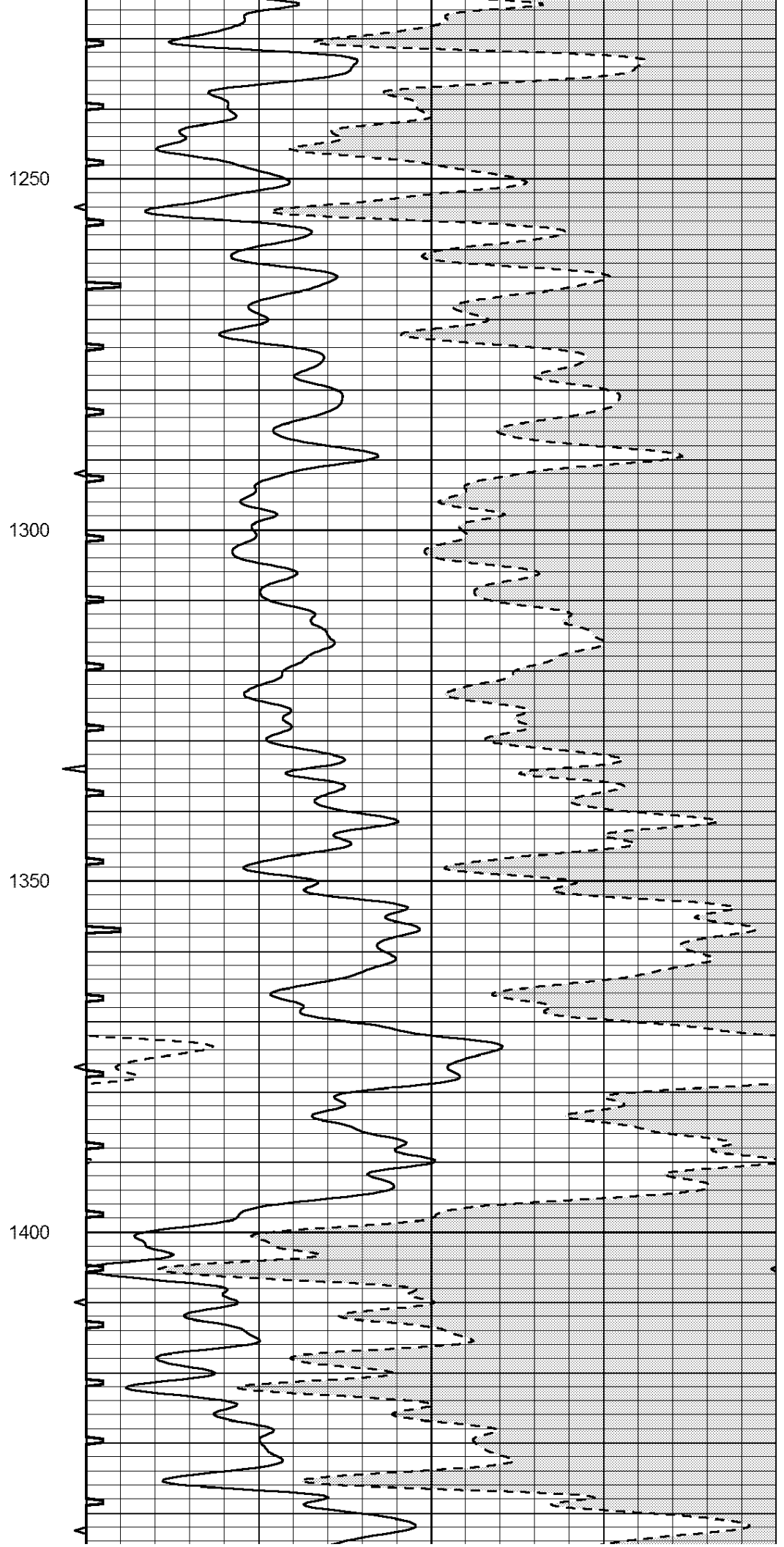
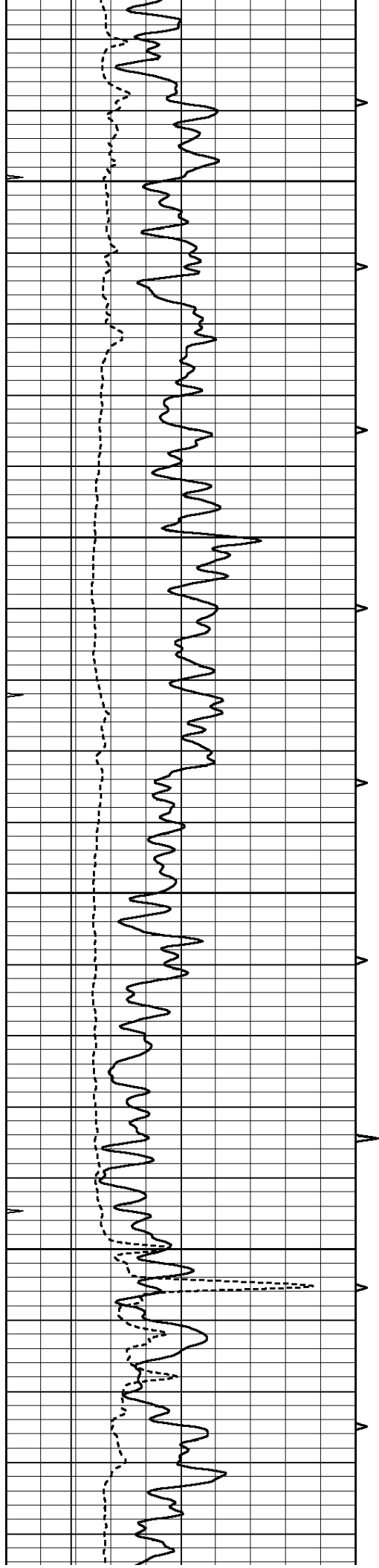


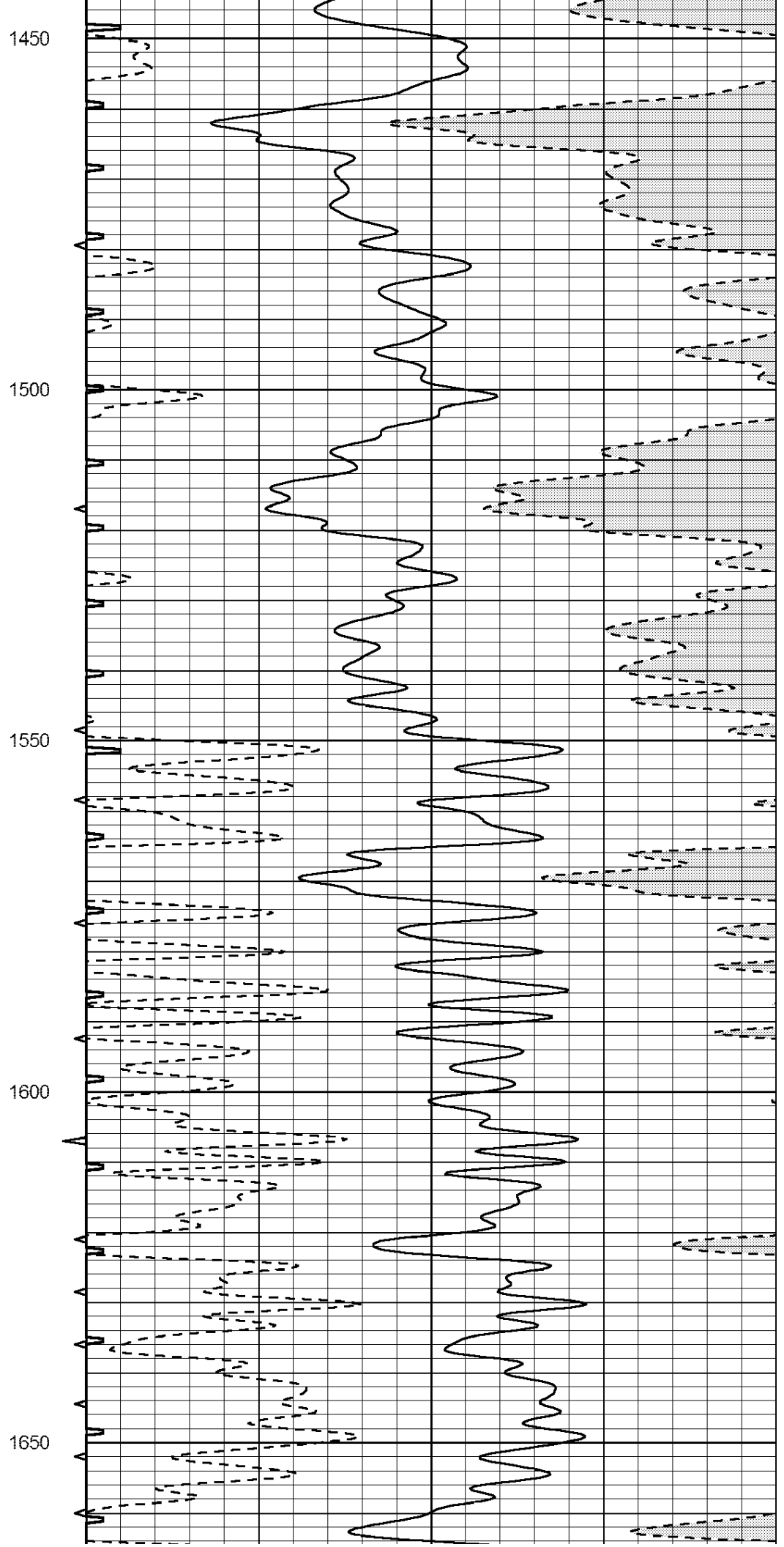
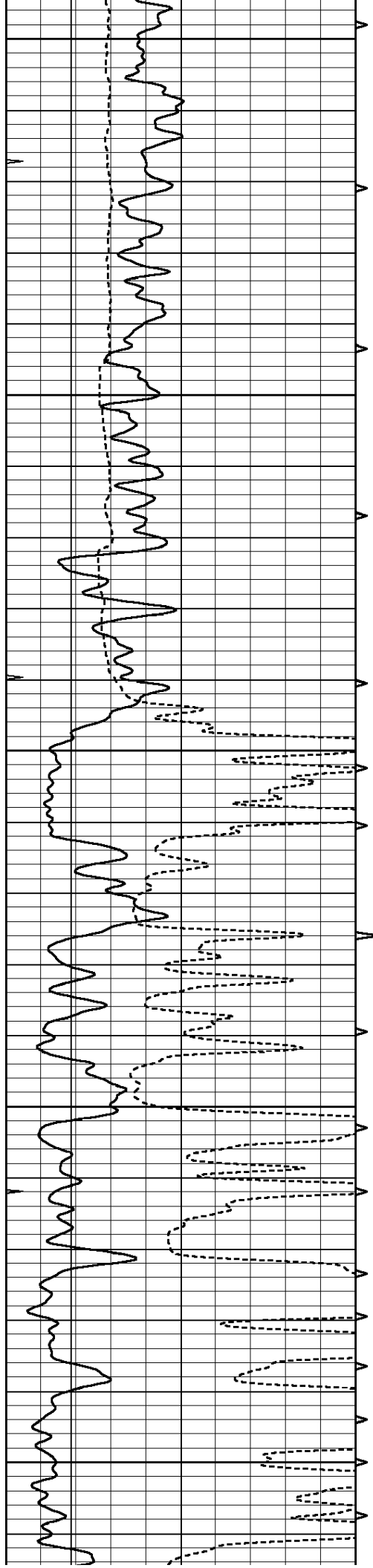
MAIN SECTION

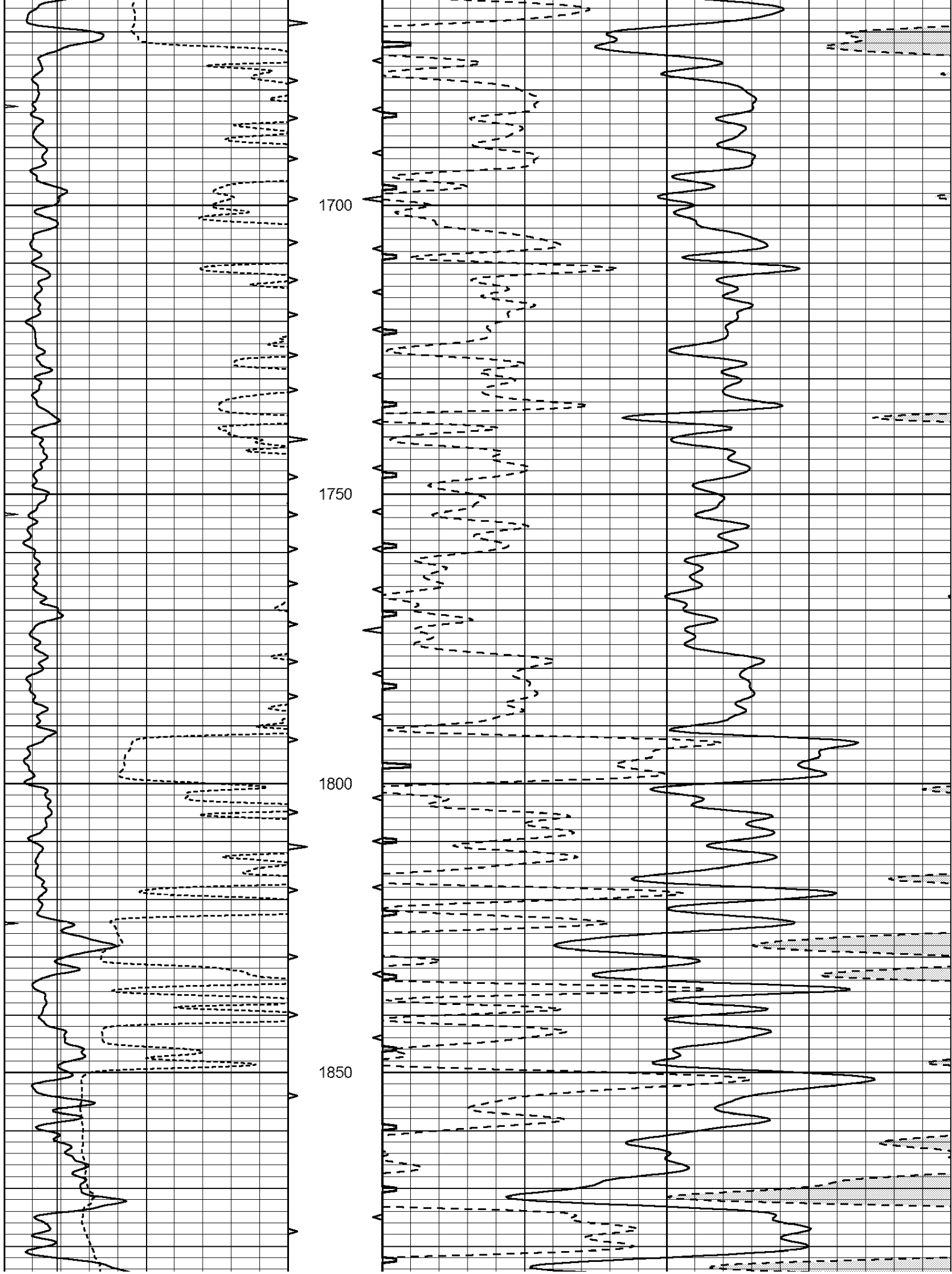
Database File: 24021ddn.db
 Dataset Pathname: pass6.2
 Presentation Format: _slt
 Dataset Creation: Tue Apr 08 19:25:27 2014 by Calc Open-Cased 090629
 Charted by: Depth in Feet scaled 1:240

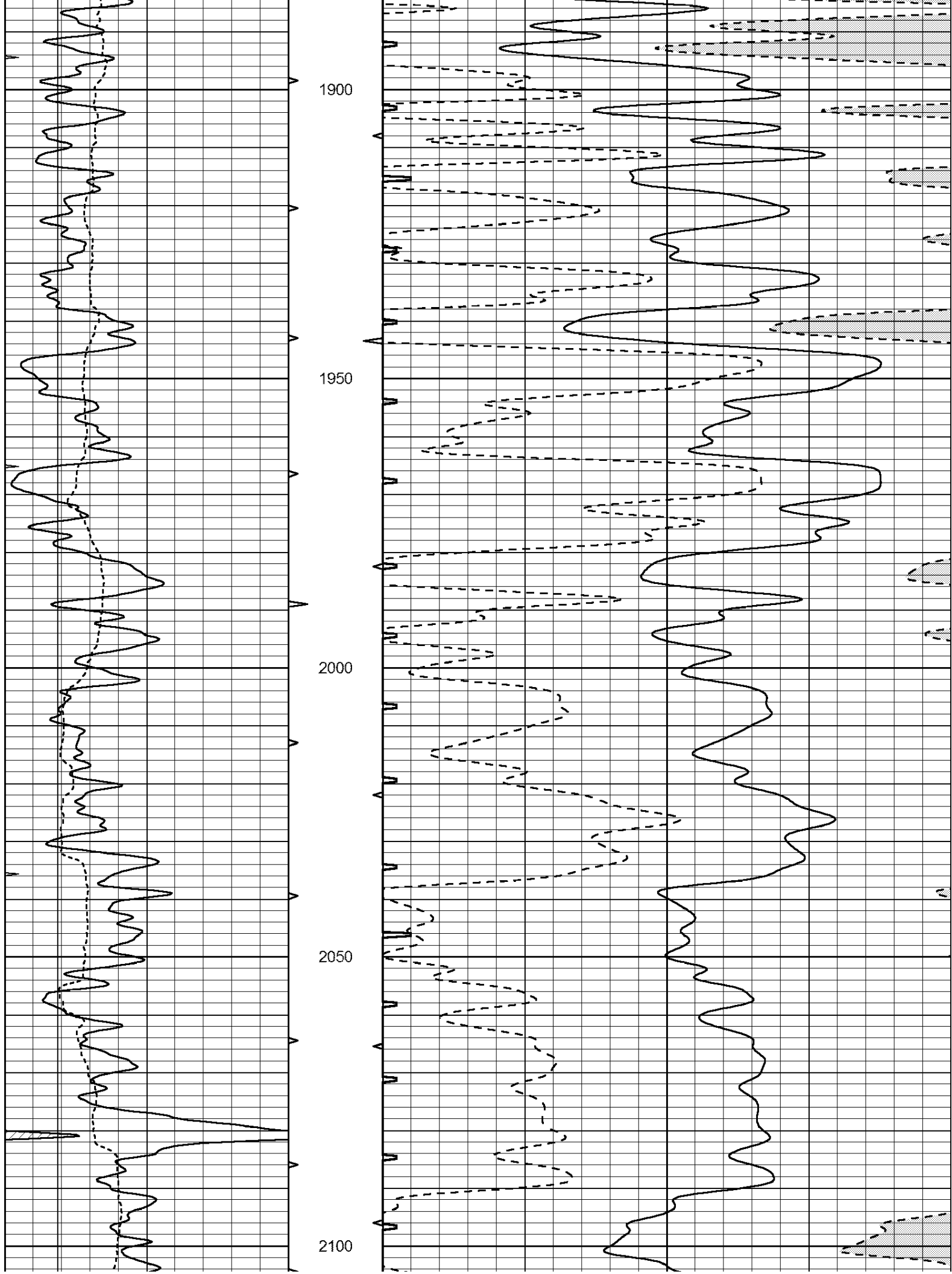
0	GAMMA RAY (GAPI)	150	ABHV	140	DELTA TIME (usec/ft)	40
6	CALIPER (in)	16	10 (ft3)	0	30	SONIC POROSITY (pu)
0	MINMK	20	TBHV	0	ITT (msec)	20
			0 (ft3)	10		

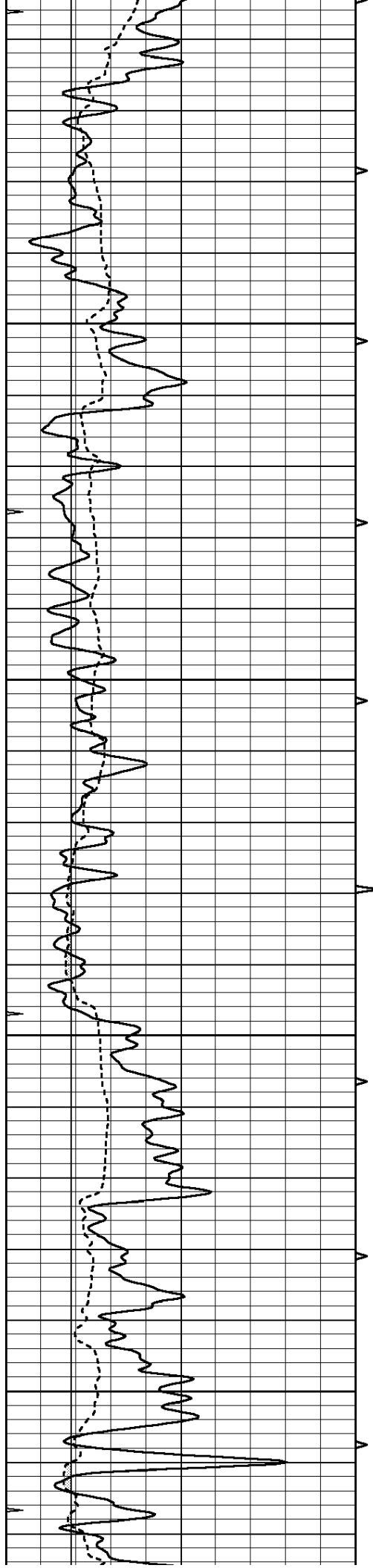










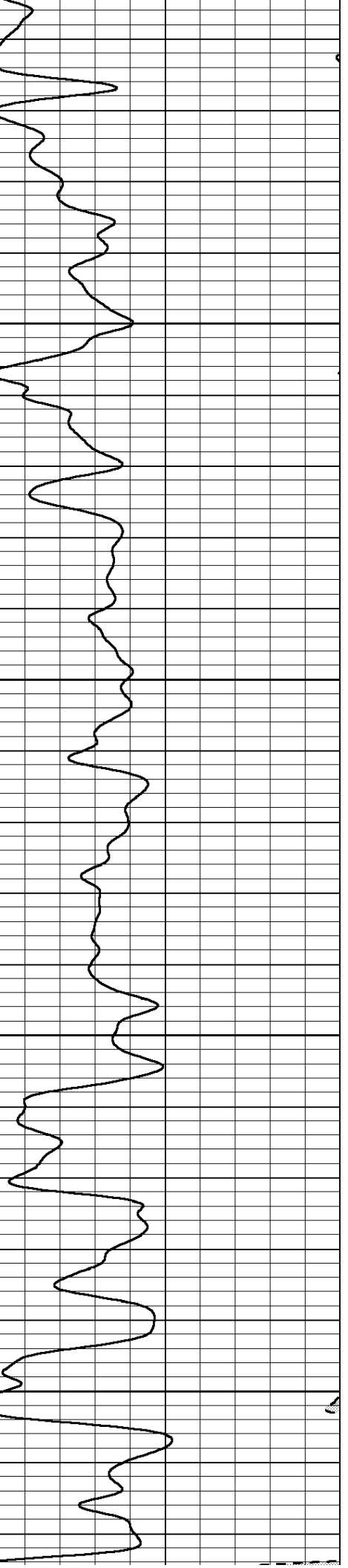
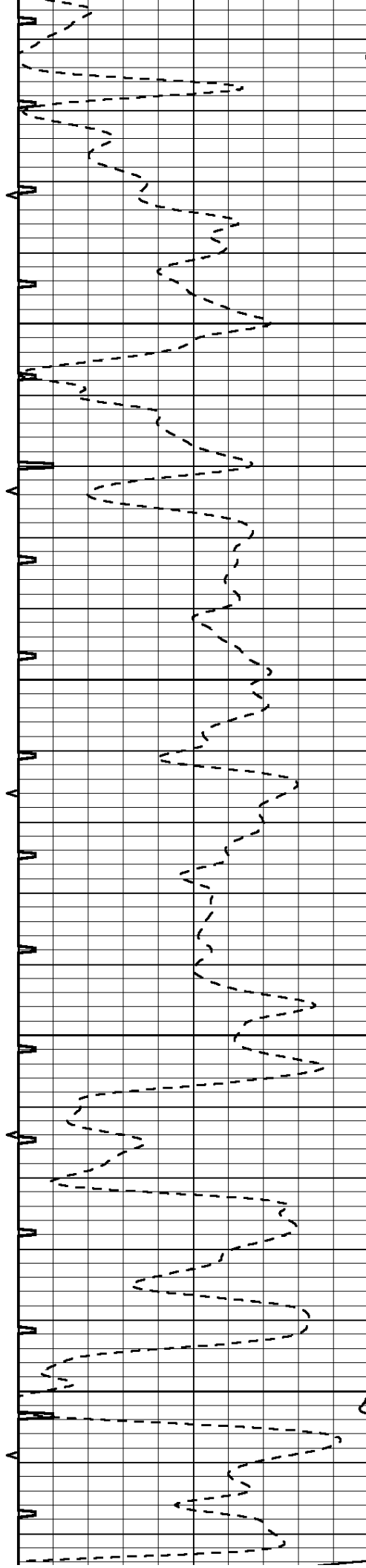


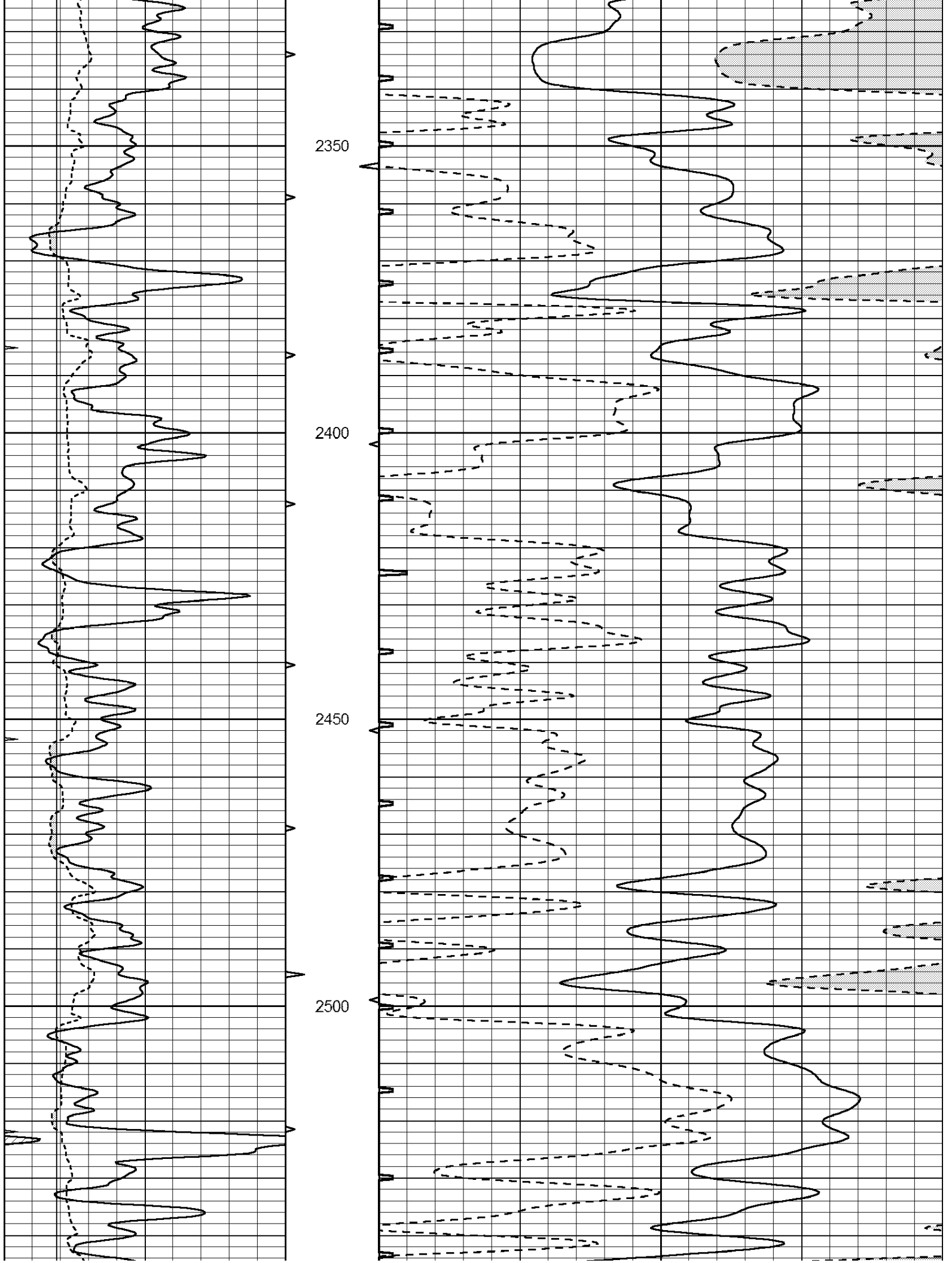
2150

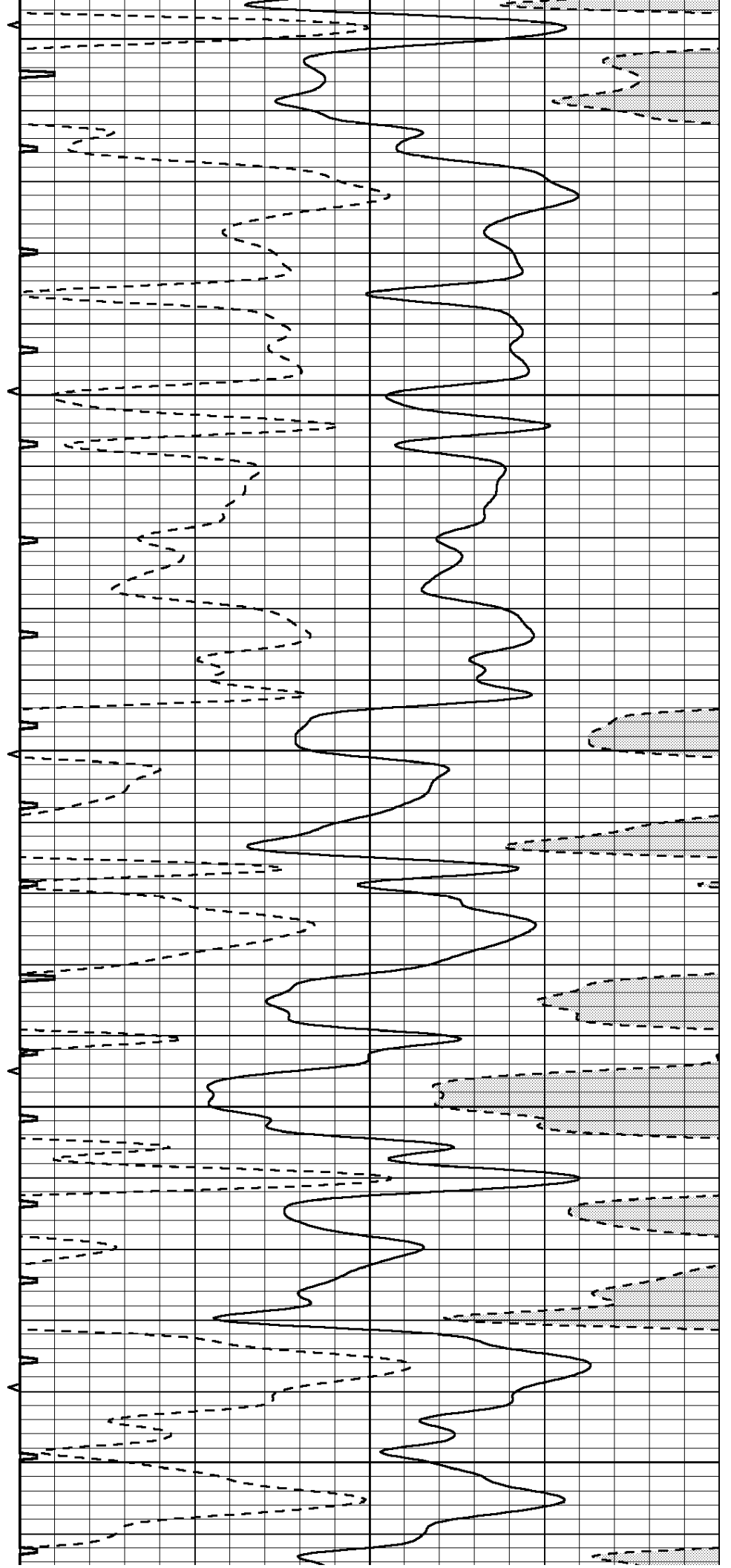
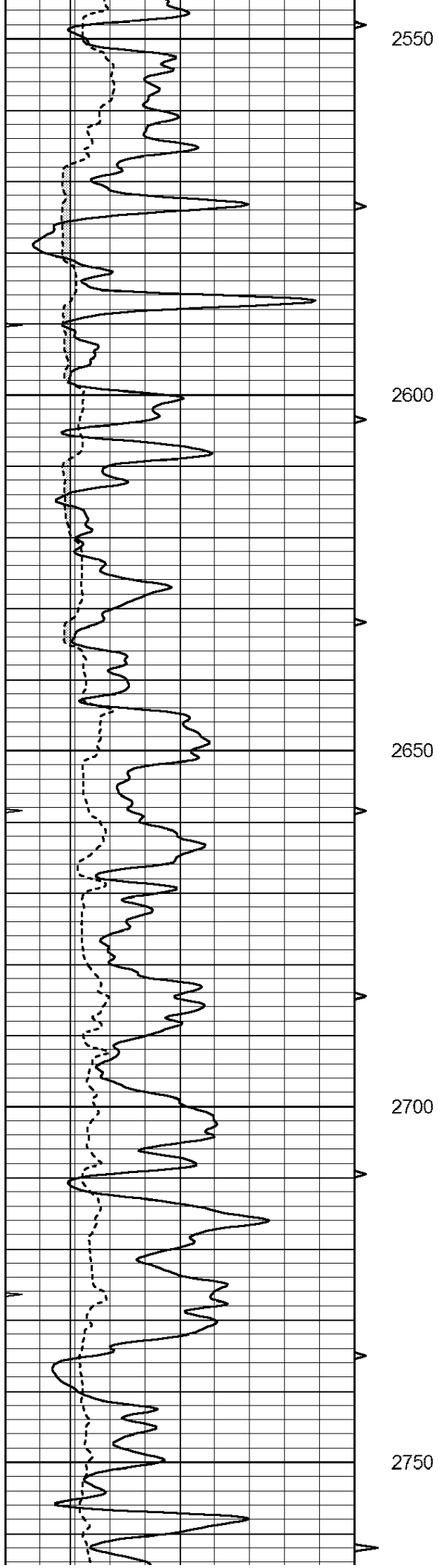
2200

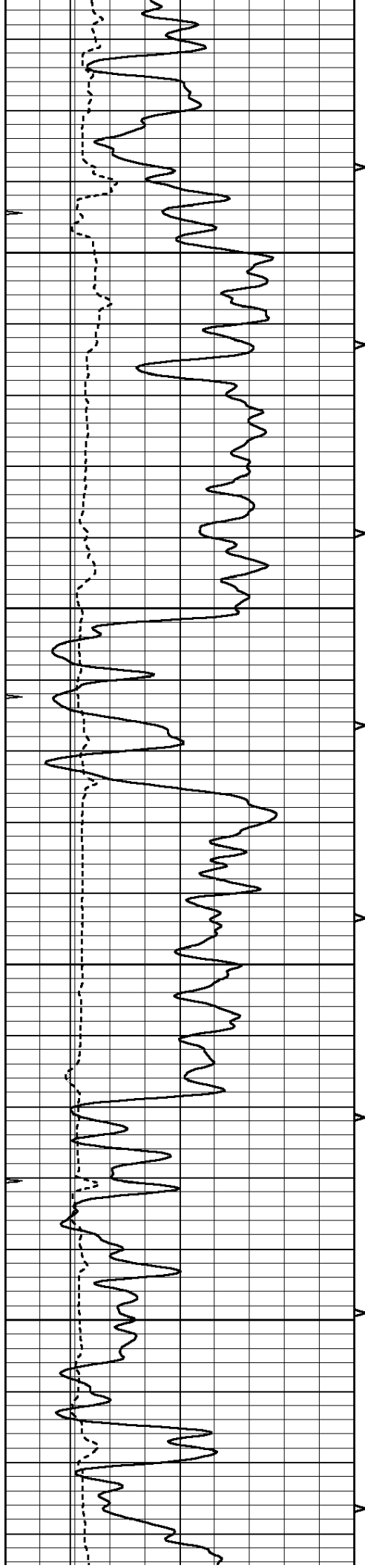
2250

2300







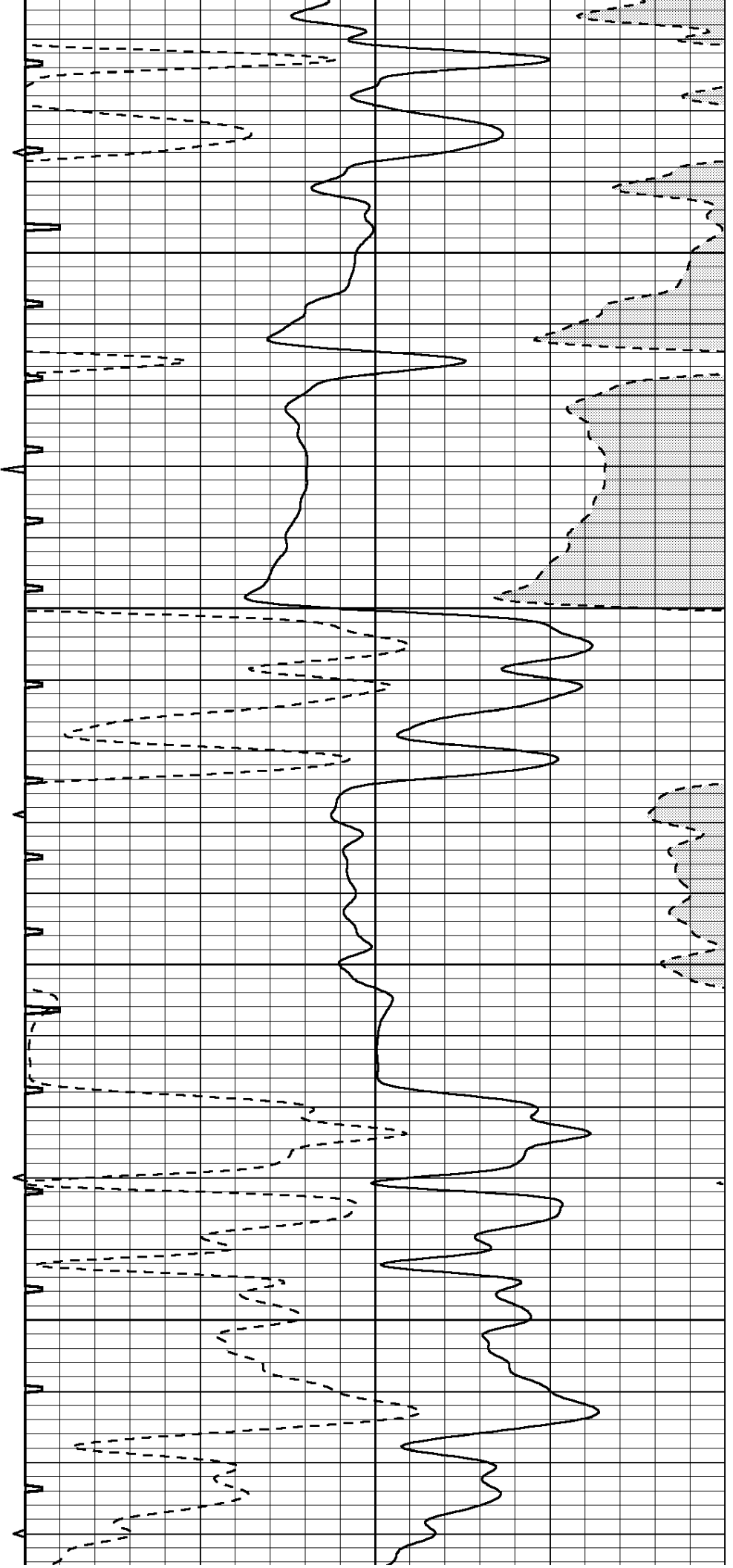


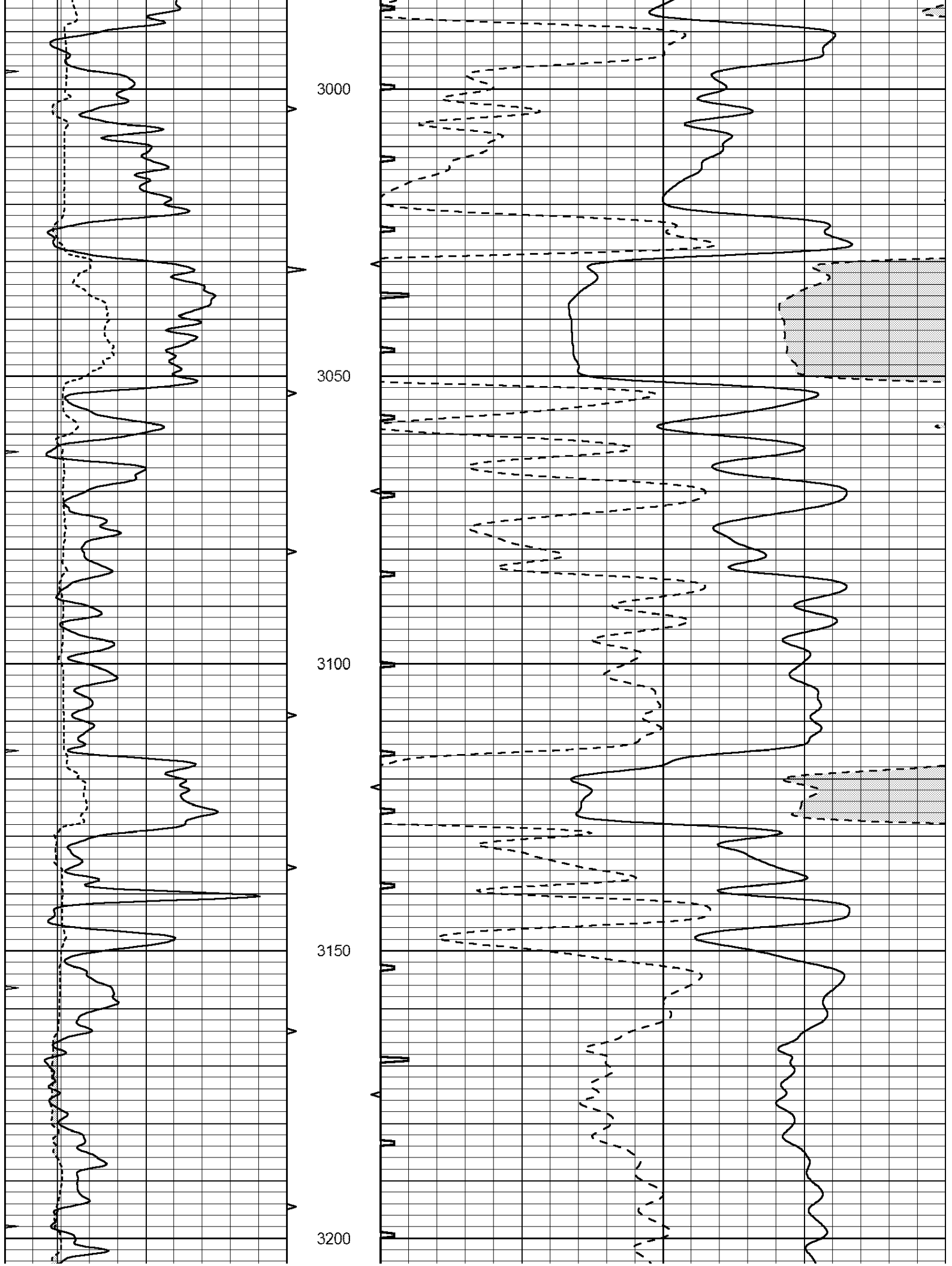
2800

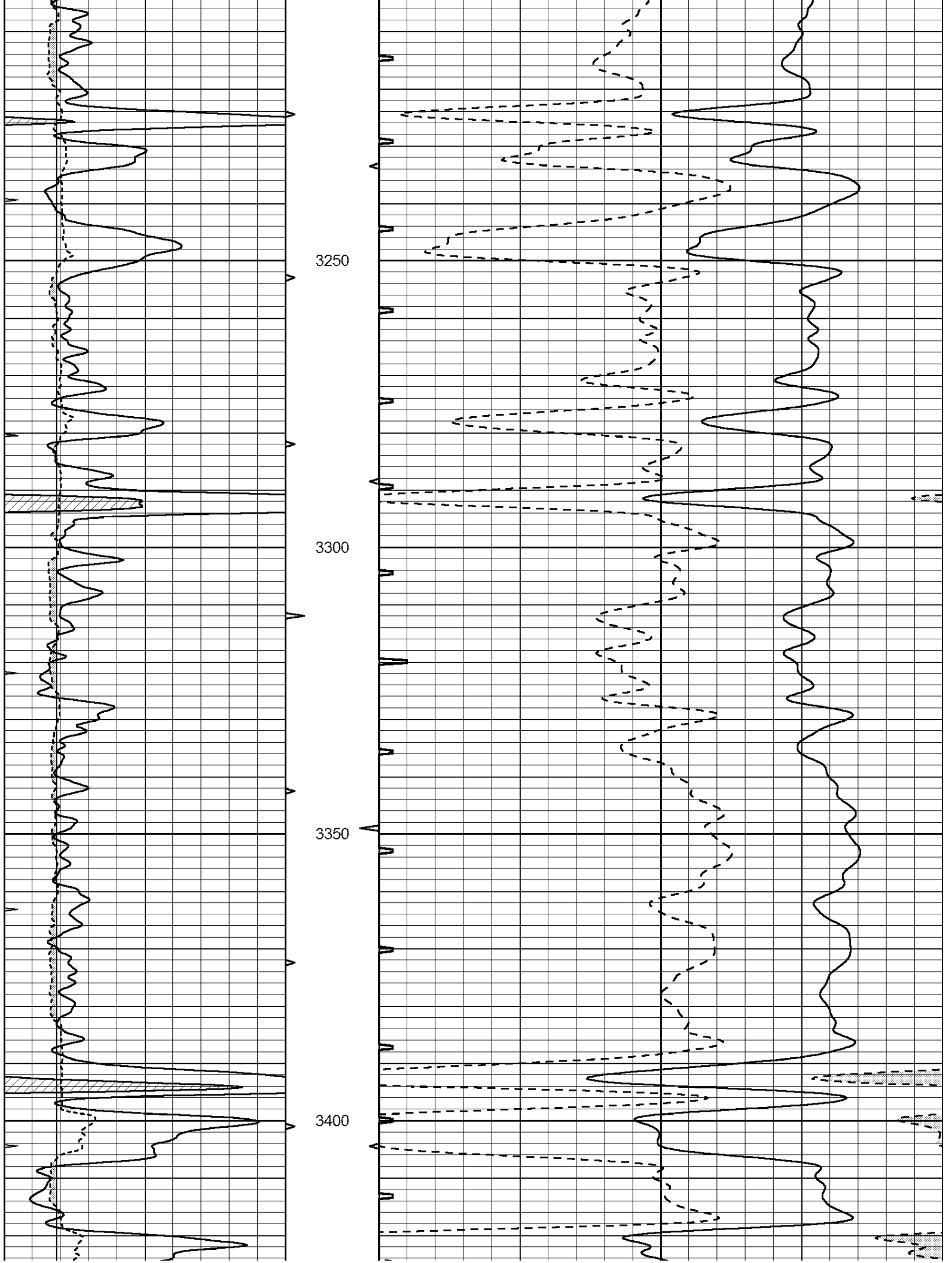
2850

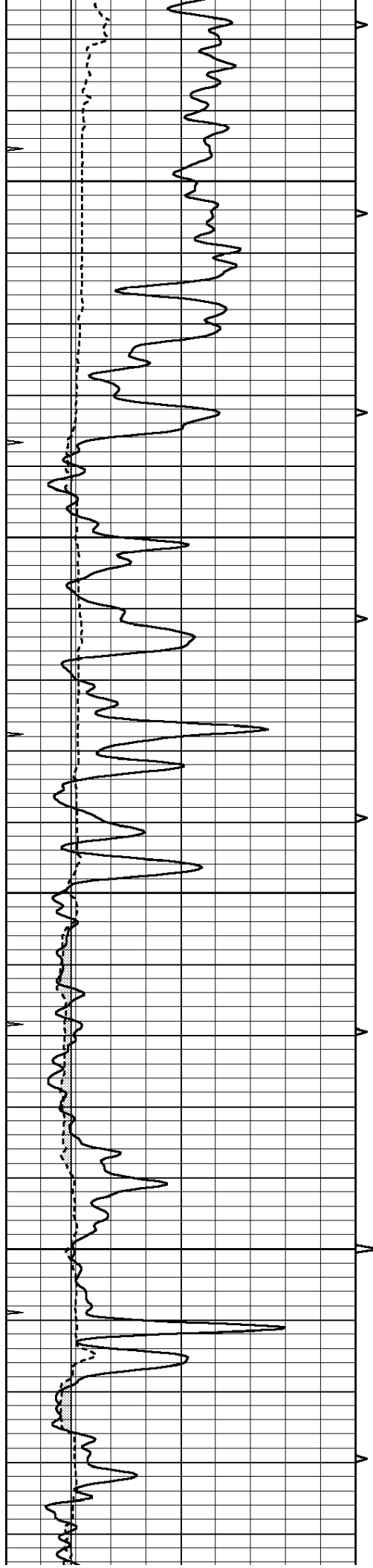
2900

2950







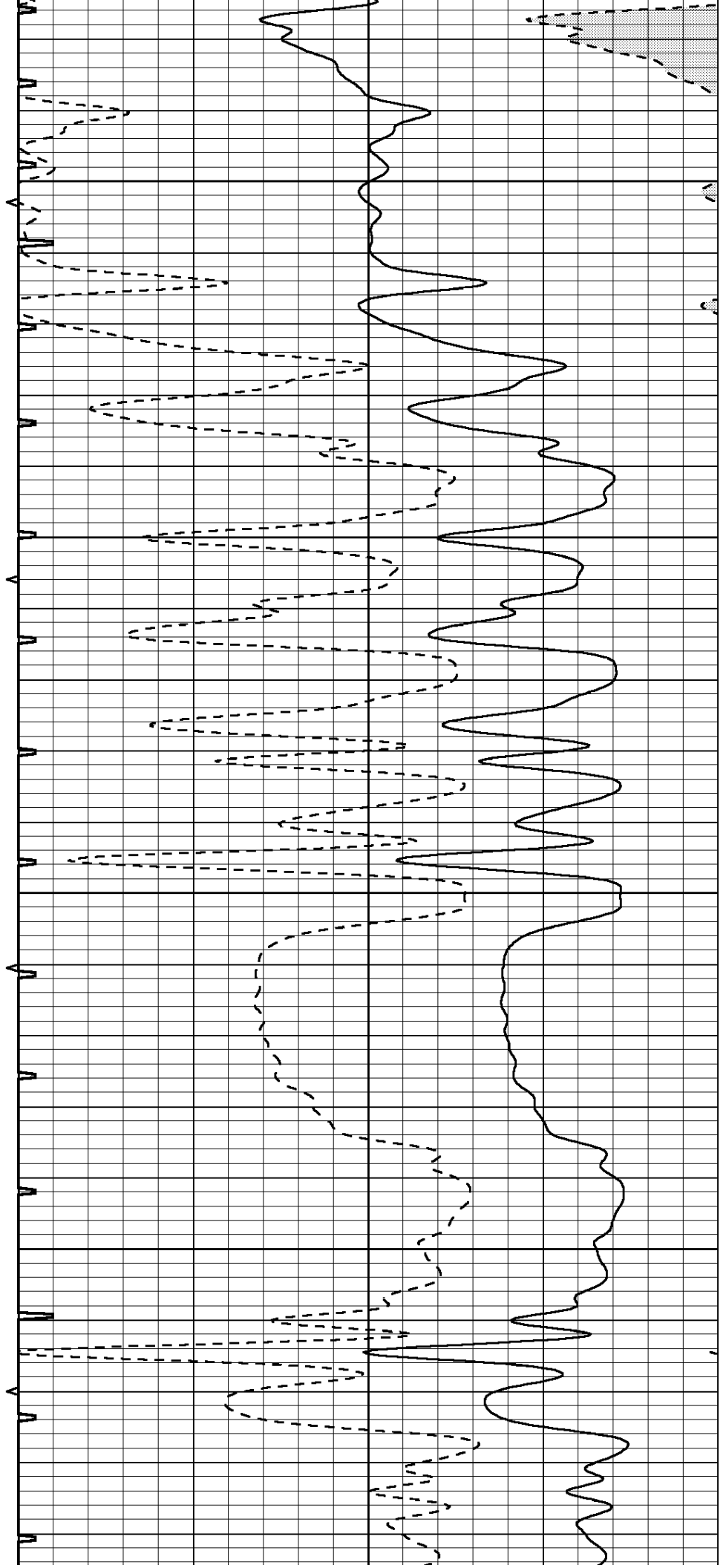


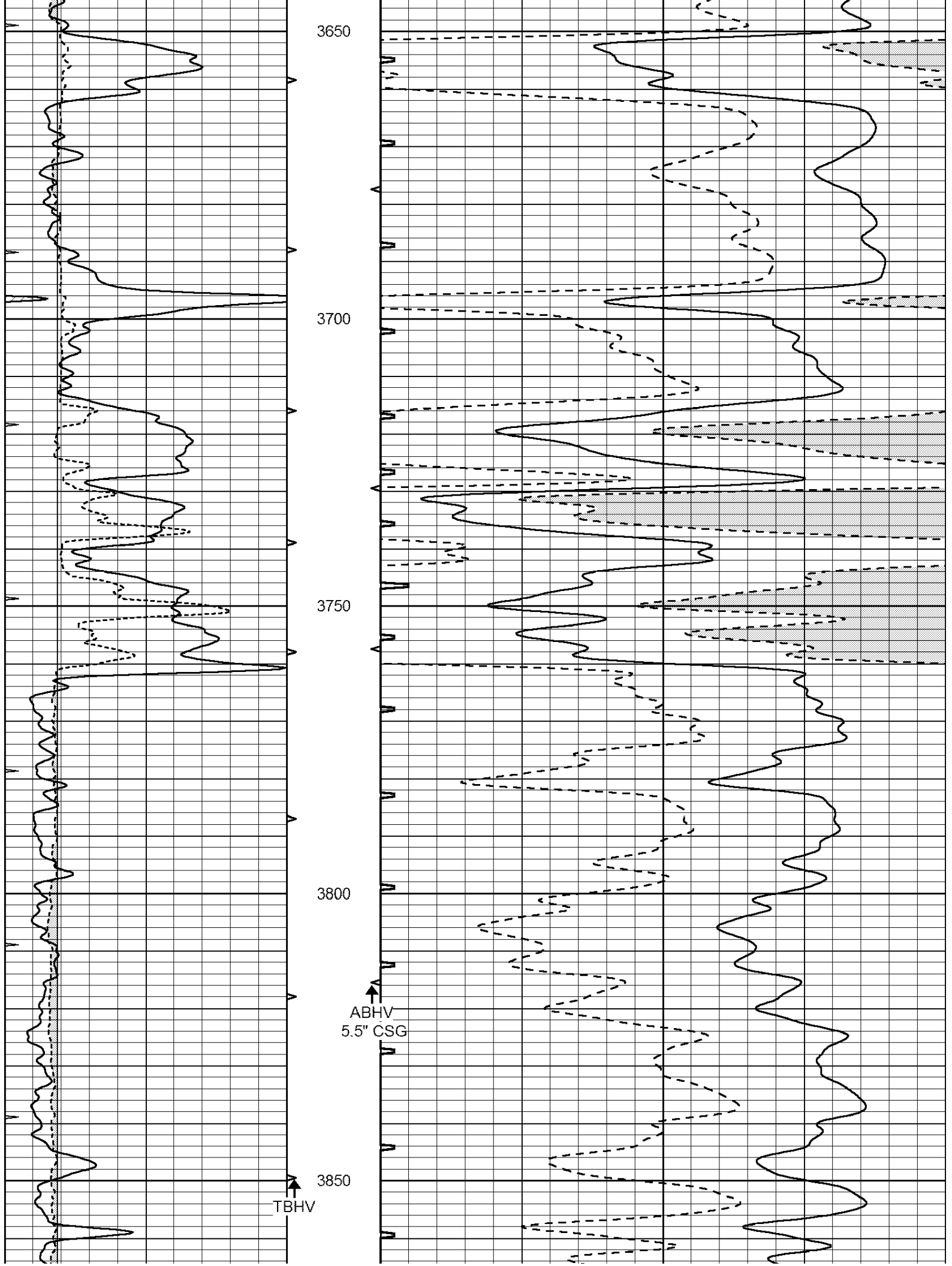
3450

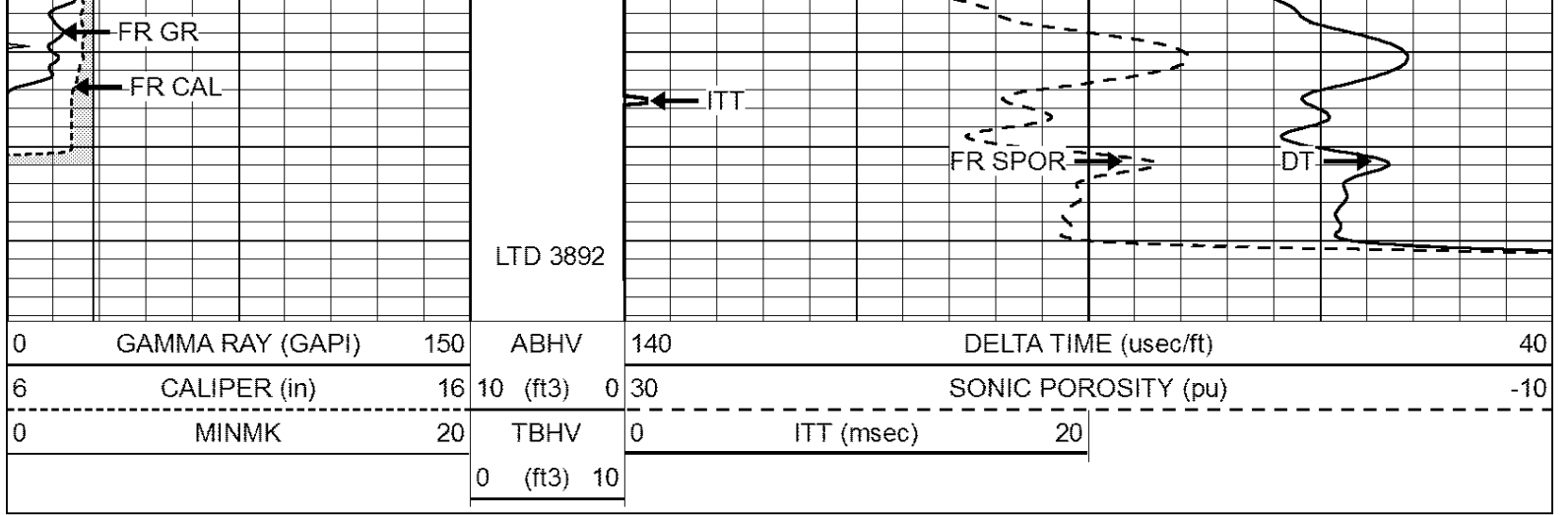
3500

3550

3600







REPEAT SECTION

Database File: 24021ddn.db
 Dataset Pathname: pass5.1
 Presentation Format: _slt
 Dataset Creation: Tue Apr 08 18:45:24 2014 by Calc Open-Cased 090629
 Charted by: Depth in Feet scaled 1:240

0	GAMMA RAY (GAPI)	150	ABHV	140	DELTA TIME (usec/ft)	40	
6	CALIPER (in)	16	10 (ft3)	0	30	SONIC POROSITY (pu)	-10
0	MINMK	20	TBHV	0	ITT (msec)	20	
			0 (ft3)	10			

