



**COMPLETION
& PRODUCTION
SERVICES CO.**

**MICRO
LOG**

Company CHARTER ENERGY, INC.
Well WELLS #1
Field CONVERSE
County BARTON
State KANSAS

Company CHARTER ENERGY, INC.
Well WELLS #1
Field CONVERSE
County BARTON
State KANSAS

Location: API # : 15-009-25960-0000
1120' FSL & 1627' FEL
NE - NE - SW - SE
SEC 18 TWP 20S RGE 15W
Permanent Datum GROUND LEVEL Elevation 2067
Log Measured From KELLY BUSHING 7' A.G.L.
Drilling Measured From KELLY BUSHING
Other Services
CDL/CNL
DIL/SON
Elevation
K.B. 2074
D.F. 2072
G.L. 2067

Date	4/8/14		
Run Number	TWO		
Depth Driller	3890		
Depth Logger	3892		
Bottom Logged Interval	3874		
Top Log Interval	3100		
Casing Driller	8 5/8" @ 1080		
Casing Logger	1080		
Bit Size	7 7/8"		
Type Fluid in Hole	CHEMICAL MUD	CHLORIDES 7300 PPM	
Density / Viscosity	9.0/51		
pH / Fluid Loss	9.0/7.2		
Source of Sample	FLOWLINE		
Rm @ Meas. Temp	.60 @ 80F		
Rmt @ Meas. Temp	.45 @ 80F		
Rmc @ Meas. Temp	.72 @ 80F		
Source of Rmf / Rmc	MEASUREMENT		
Rm @ BHT	.41 @ 115F		
Time Circulation Stopped	2 HOURS		
Time Logger on Bottom			
Maximum Recorded Temperature	115F		
Equipment Number	4010		
Location	HAYS, KANSAS		
Recorded By	JASON CAPPELLUCCI		
Witnessed By	WYATT URBAN		

<<< Fold Here >>>

All interpretations are opinions based on inferences from electrical or other measurements and we cannot and do not guarantee the accuracy or correctness of any interpretation, and we shall not, except in the case of gross or willful negligence on our part, be liable or responsible for any loss, costs, damages, or expenses incurred or sustained by anyone resulting from any interpretation made by any of our officers, agents or employees. These interpretations are also subject to our general terms and conditions set out in our current Price Schedule.

Comments

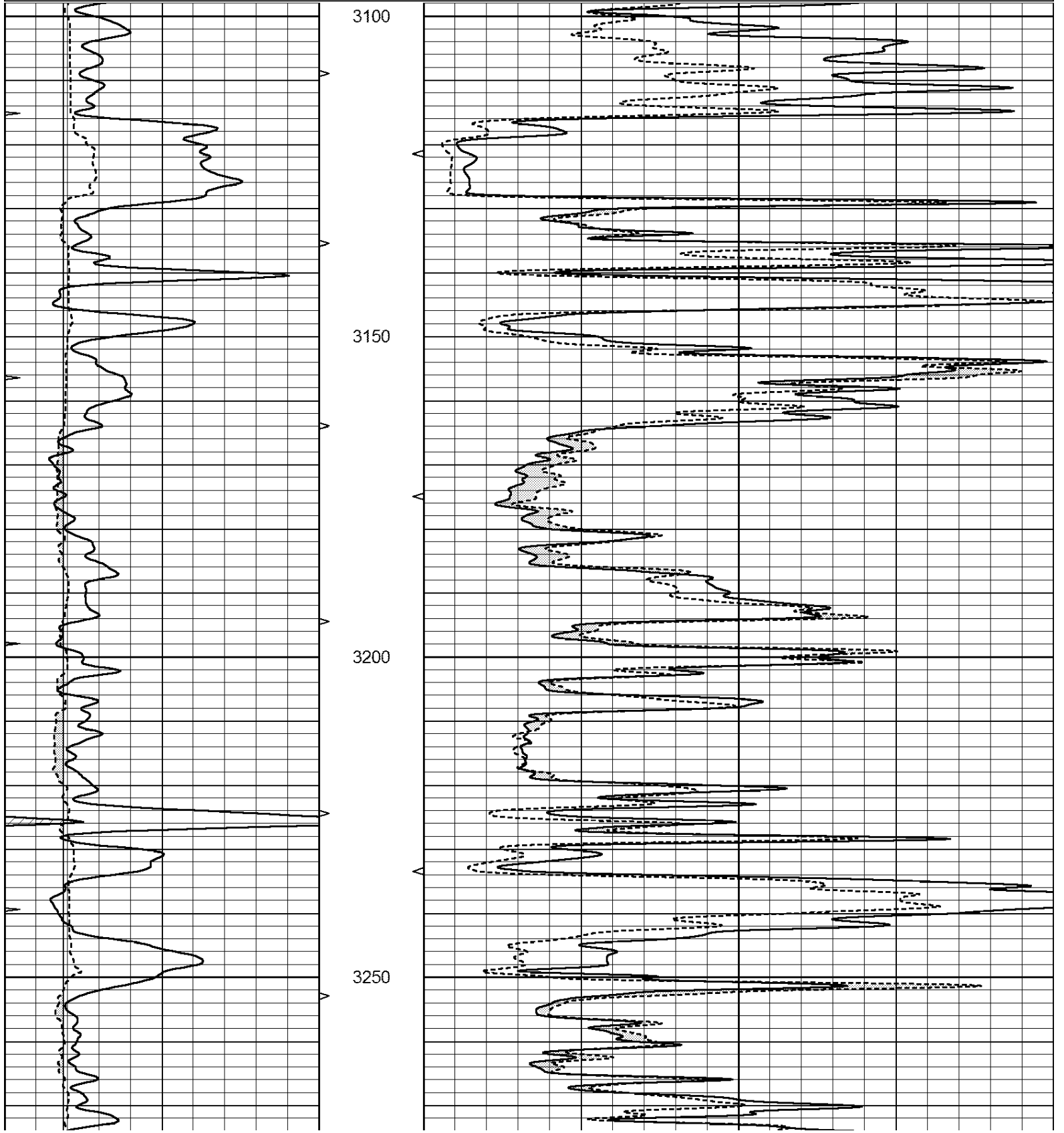
THANK YOU FOR USING NABORS, HAYS, KS. (785) 628-6395
DIRECTIONS:
PAWNEE ROCK, KS. - ON EAST SIDE (RD. SW 110) 3 NORTH TO RD. 40
2 1/2 WEST - NORTH INTO

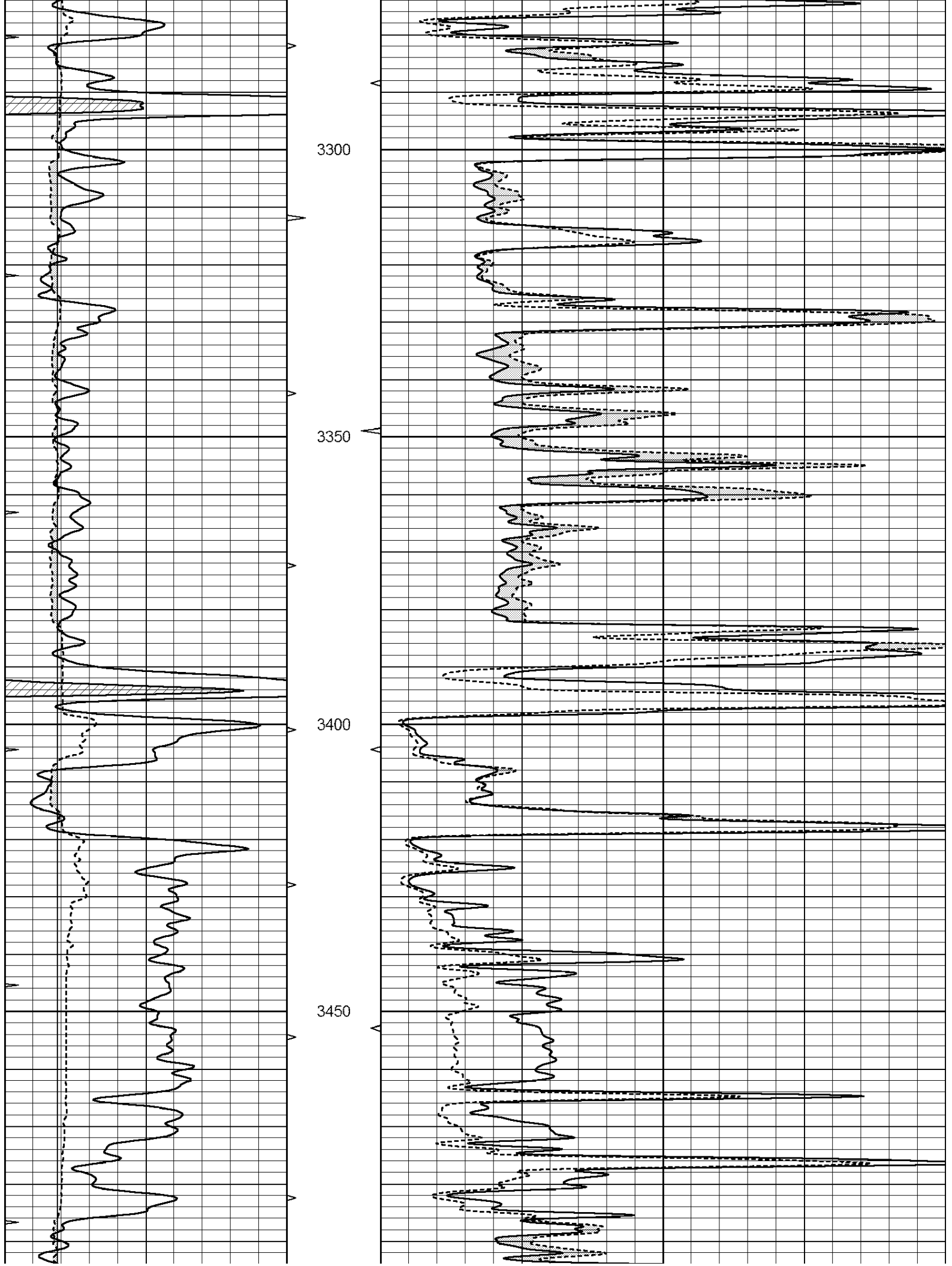


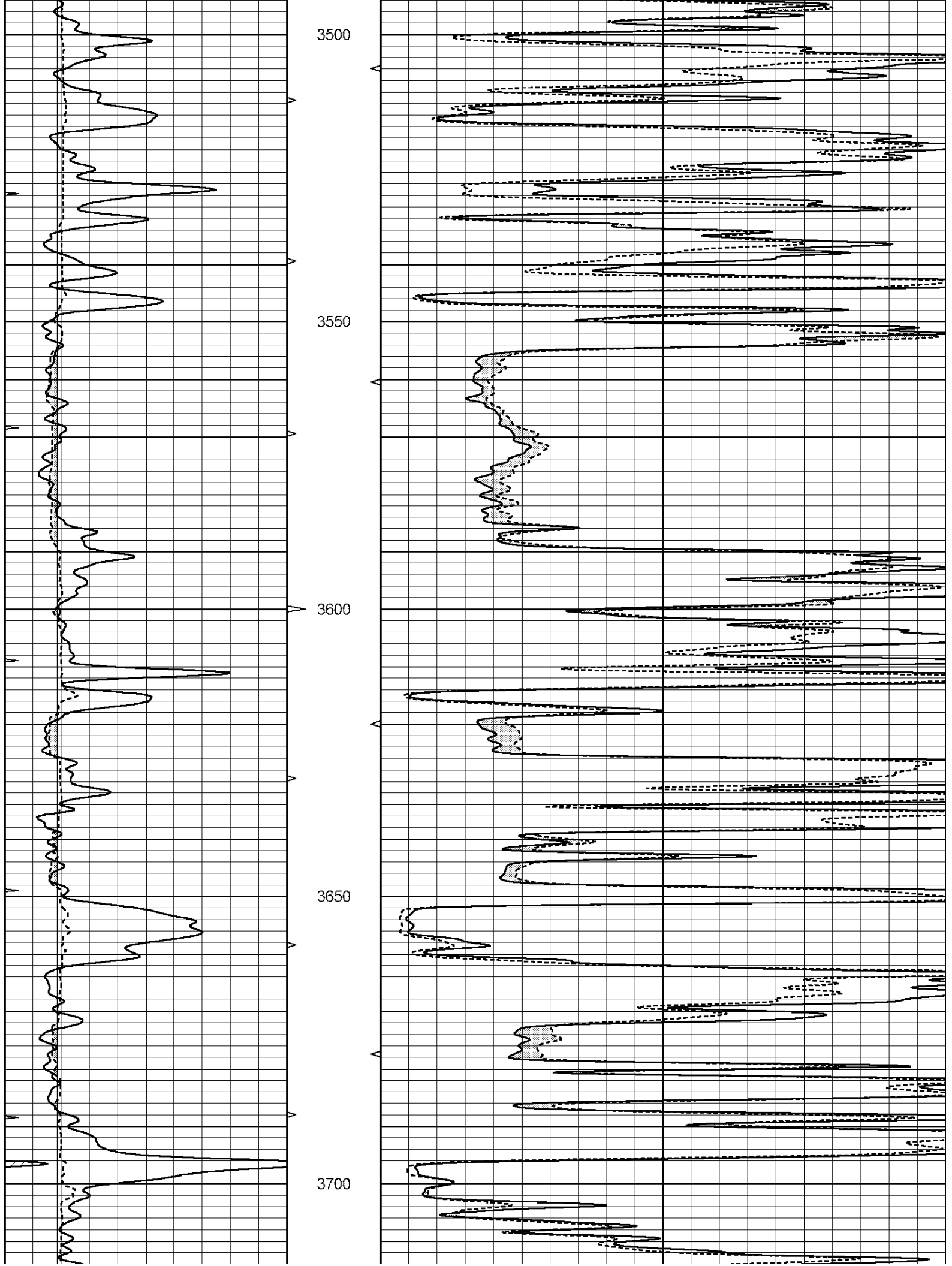
MAIN SECTION

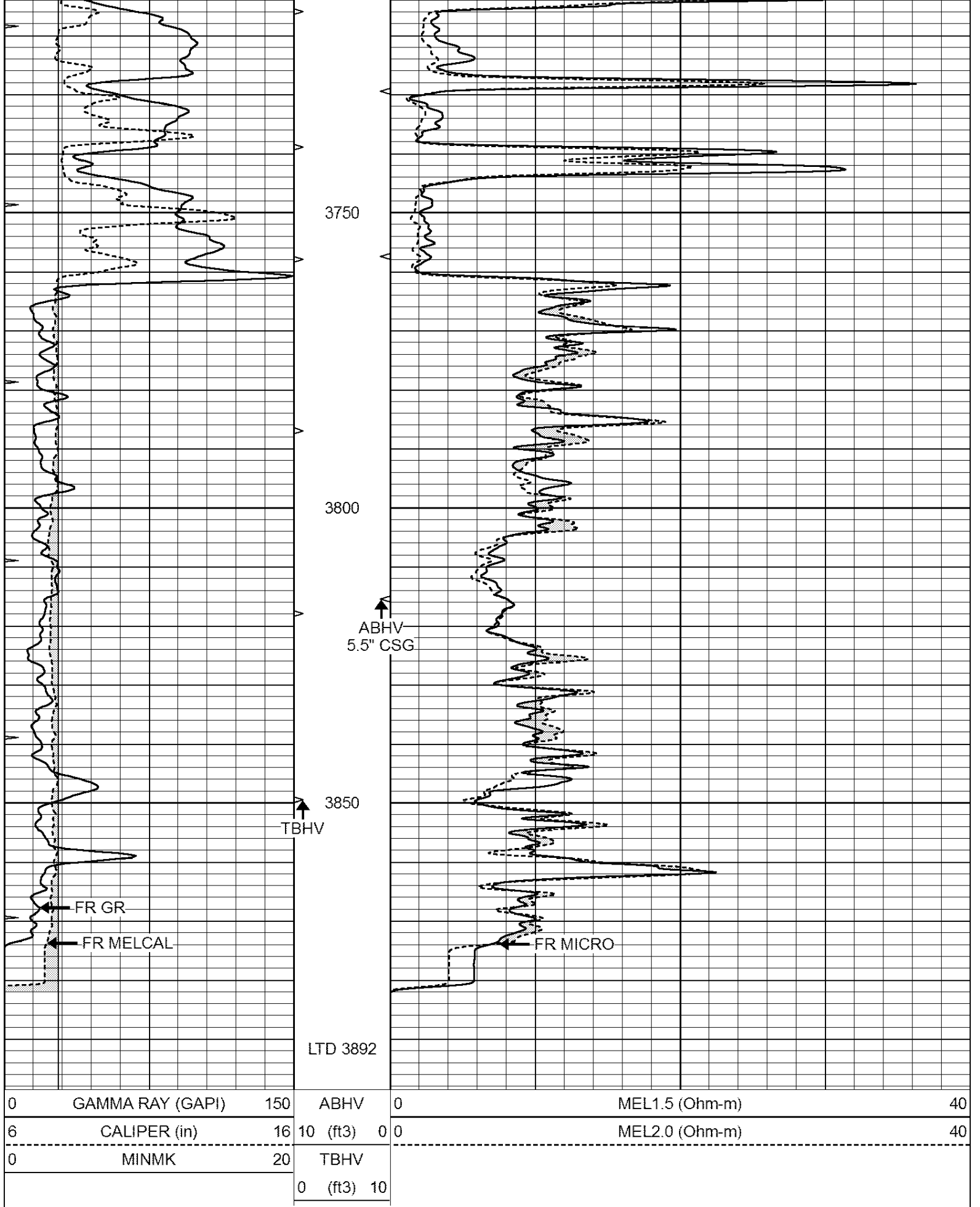
Database File: 24021ddn.db
 Dataset Pathname: pass6.1
 Presentation Format: _micro
 Dataset Creation: Tue Apr 08 18:54:51 2014 by Calc Open-Cased 090629
 Charted by: Depth in Feet scaled 1:240

0	GAMMA RAY (GAPI)	150	ABHV	0	MEL1.5 (Ohm-m)	40
6	CALIPER (in)	16	10 (ft3)	0	MEL2.0 (Ohm-m)	40
0	MINMK	20	TBHV			
			0 (ft3)	10		



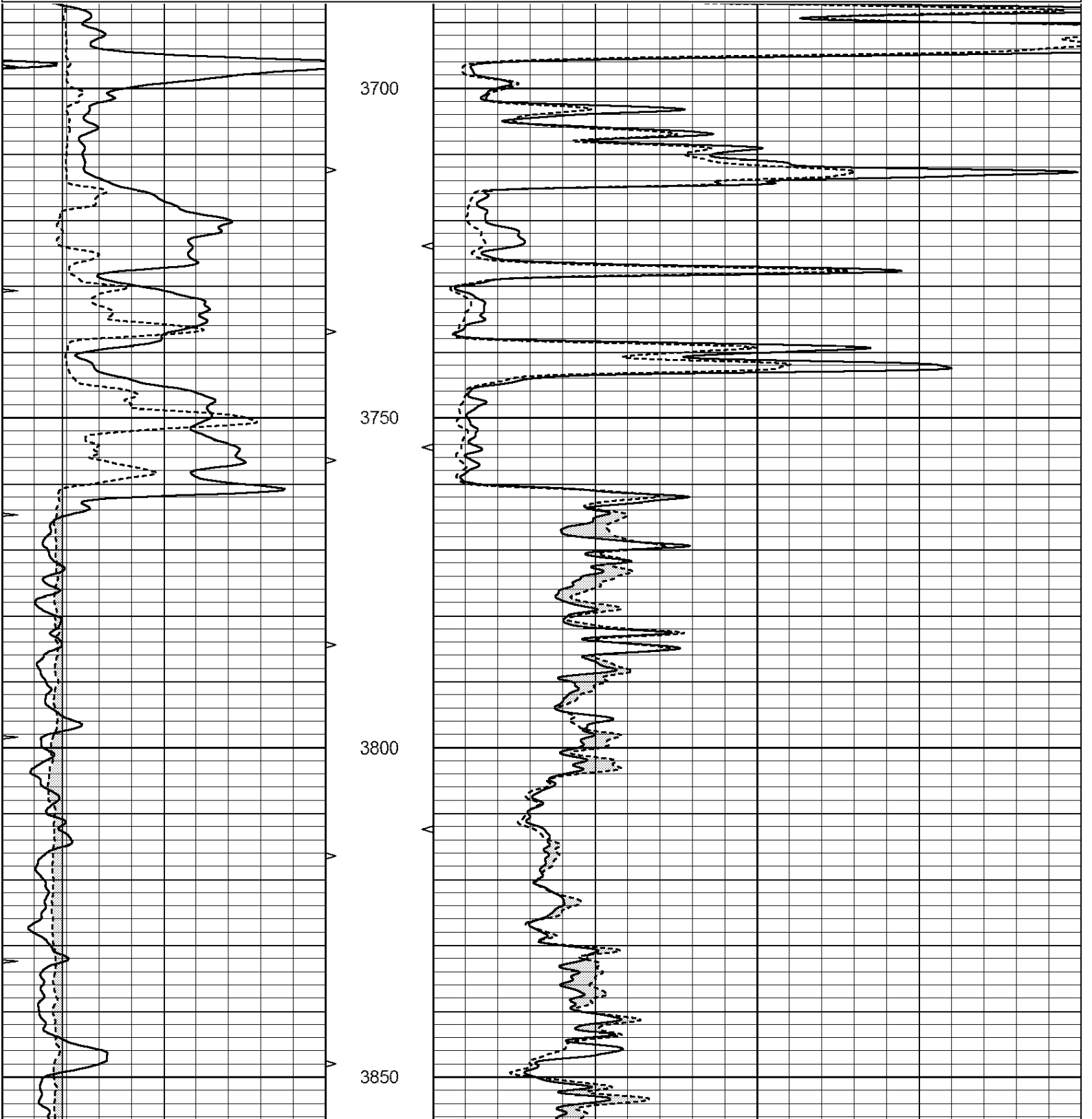


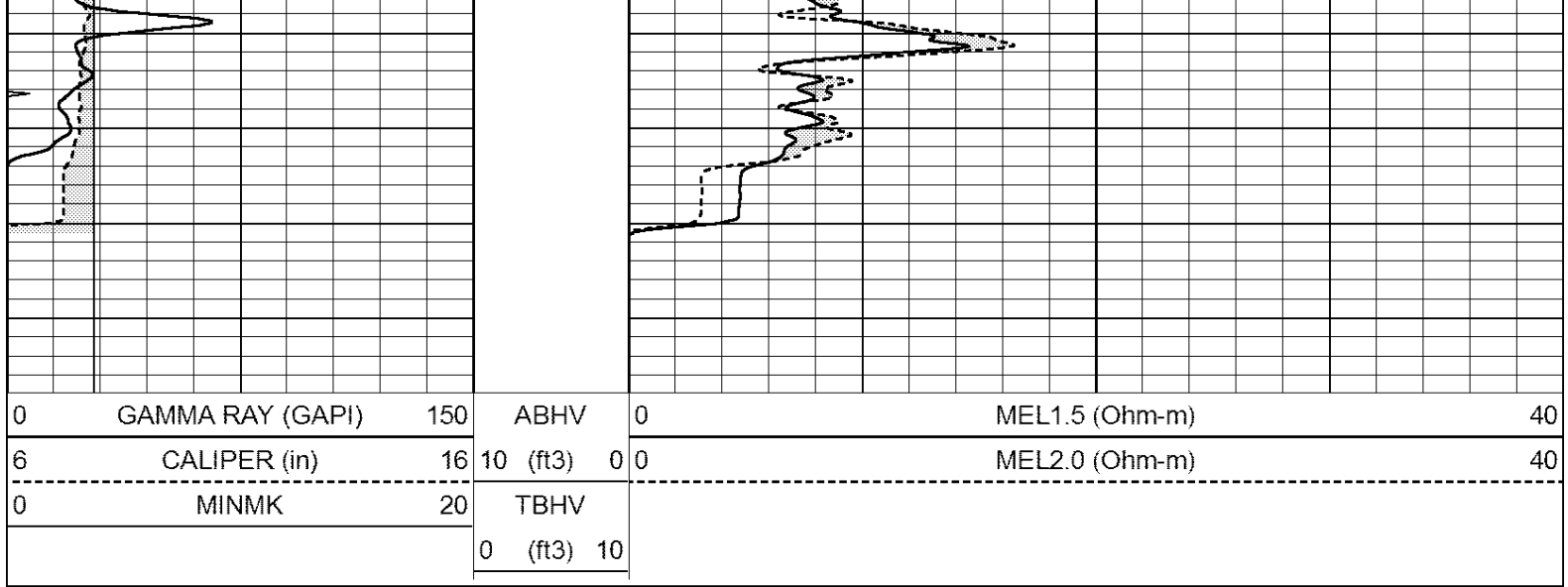




Database File: 24021ddn.db
 Dataset Pathname: pass5.1
 Presentation Format: _micro
 Dataset Creation: Tue Apr 08 18:45:24 2014 by Calc Open-Cased 090629
 Charted by: Depth in Feet scaled 1:240

0	GAMMA RAY (GAPI)	150	ABHV	0	MEL1.5 (Ohm-m)	40
6	CALIPER (in)	16	10 (ft3)	0	MEL2.0 (Ohm-m)	40
0	MINMK	20	TBHV			
			0 (ft3)	10		





Calibration Report

Database File: 24021ddn.db
 Dataset Pathname: pass5.1
 Dataset Creation: Tue Apr 08 18:45:24 2014 by Calc Open-Cased 090629

MICRO Calibration Report

Serial Number: MICRO6
 Tool Model: PROBE
 Performed: Fri Mar 14 21:54:54 2014

Caliper Calibration: Gain=5.542 Offset=-0.920
 References Low Cal 8.000 High Cal 14.000
 Readings 1.431 2.513

1.5" Calibration: Gain=38.075 Offset=0.000
 References Low Cal 0.000 High Cal 20.000
 Readings 0.004 1.196

2" Calibration: Gain=44.000 Offset=-0.600
 References Low Cal 0.000 High Cal 20.000
 Readings 0.006 0.913

Gamma Ray Calibration Report

Serial Number: GR6
 Tool Model: OPEN
 Performed: Fri Nov 29 08:34:37 2013
 Calibrator Value: 150.0 GAPI
 Background Reading: 0.0 cps
 Calibrator Reading: 276.0 cps
 Sensitivity: 0.6035 GAPI/cps