



Pioneer Energy Services

Microresistivity Log

15-159-22,768-00-00

API No.

Company **Carrie Exploration and Development**

Well **Cemetery # C-2**

Field **Chase-Silica**

County **Rice** State **Kansas**

Location **NW SW NW
1,650' FNL & 330' FWL**

Sec: **28** Twp: **19S** Rge: **10W**

Permanent Datum **Ground Level** Elevation **1768**

Log Measured From **Kelly Bushing** 7 Ft. Above Perm. Datum

Drilling Measured From **Kelly Bushing**

Other Services
CNL/CDL
DIL
Elevation
K.B. 1775
D.F. 1768
G.L. 1768

Date **3/22/2014**

Run Number **Two**

Depth Driller **3360**

Depth Logger **3379**

Bottom Logged Interval **3378**

Top Log Interval **2500**

Casing Driller **8.625 @ 277**

Casing Logger **272**

Bit Size **7.875**

Type Fluid in Hole **Chemical**

Salinity,ppm CL **N/A**

Density / Viscosity **9.1 56**

pH / Fluid Loss **N/A N/A**

Source of Sample **Flowline**

Rm @ Meas. Temp **.34 @ 60**

Rmf @ Meas. Temp **.26 @ 60**

Rmc @ Meas. Temp **.46 @ 60**

Source of Rmf / Rmc **Charts**

Rm @ BHT **.19 @ 110**

Operating Rig Time **4 Hours**

Max Rec. Temp. F **110**

Equipment Number **108**

Location **Hays**

Recorded By **J. Long**

Witnessed By **Steve Reed**

<<< Fold Here >>>

All interpretations are opinions based on inferences from electrical or other measurements and we cannot and do not guarantee the accuracy or correctness of any interpretation, and we shall not, except in the case of gross or willful negligence on our part, be liable or responsible for any loss, costs, damages, or expenses incurred or sustained by anyone resulting from any interpretation made by any of our officers, agents or employees. These interpretations are also subject to our general terms and conditions set out in our current Price Schedule.

Comments

Thank you for using Pioneer Energy Services
www.pioneer.com
785 625 3858

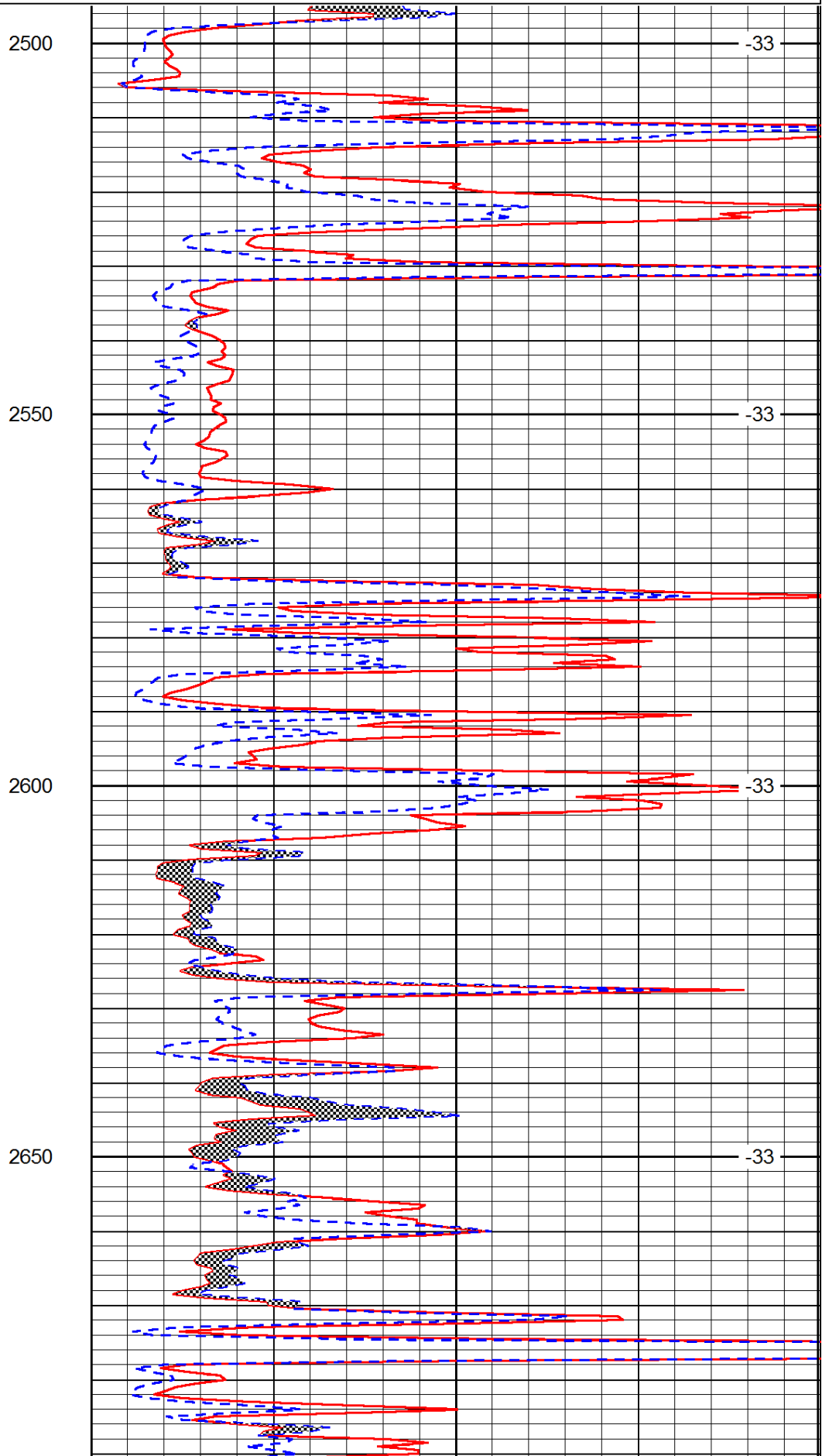
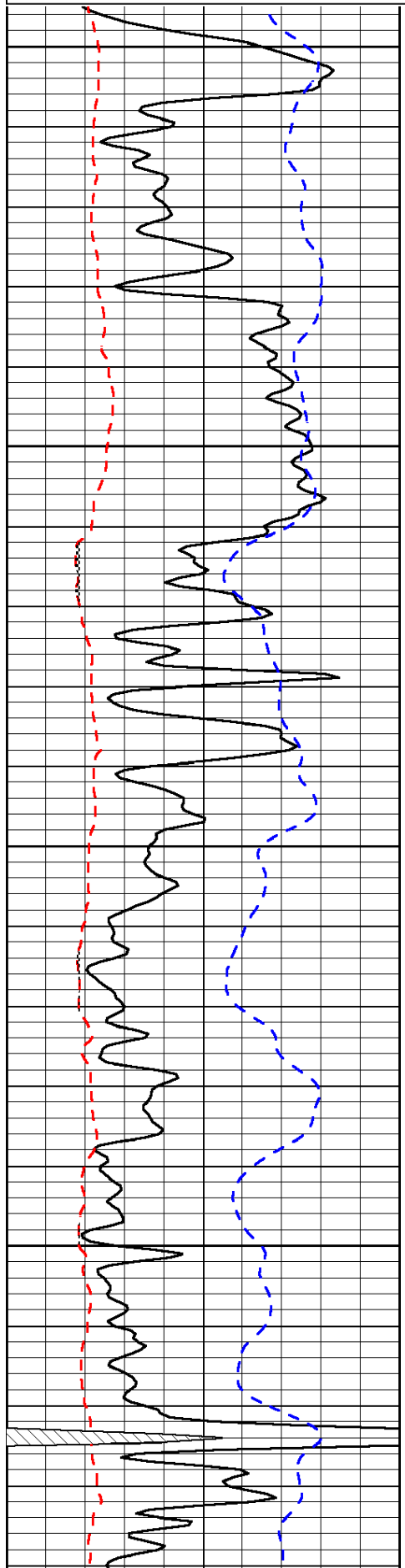
Ellinwood, East to County Line, 2 East to 3 Road, 1 3/4 North, East Into

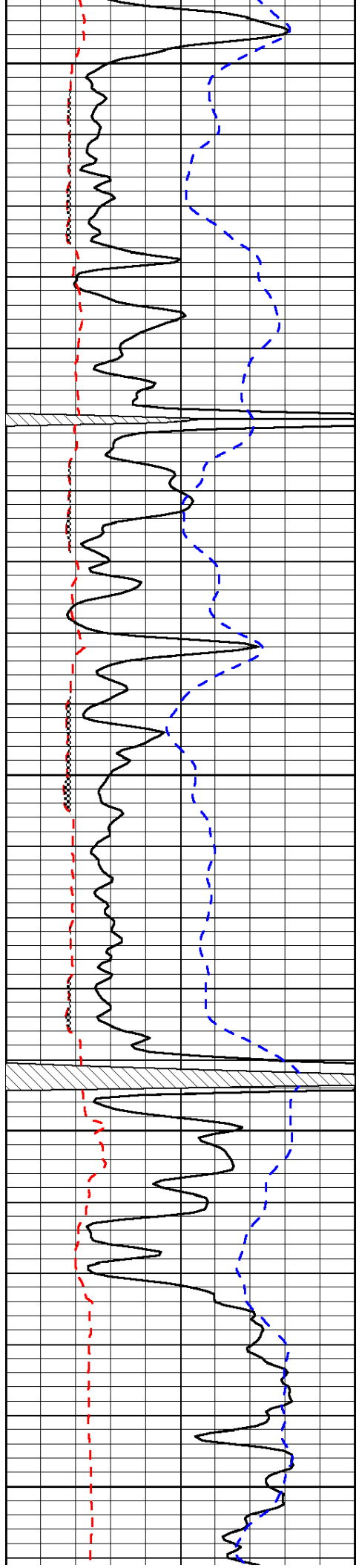
Database File: c:\warrior\data\carrie exp_cemetery #c-2\carrie_cemetery_c-2hd.db
Dataset Pathname: dil/carrstck
Presentation Format: micro
Dataset Creation: Sat Mar 22 09:20:29 2014
Charted by: Depth in Feet scaled 1:240

0	Gamma Ray	150
6	Micro Log Caliper (GAPI)	16
-200	SP (mV)	0

0	Micro Inverse 1 X 1	40
0	Micro Normal 2"	40
15000	Line Weight	0

LSPD





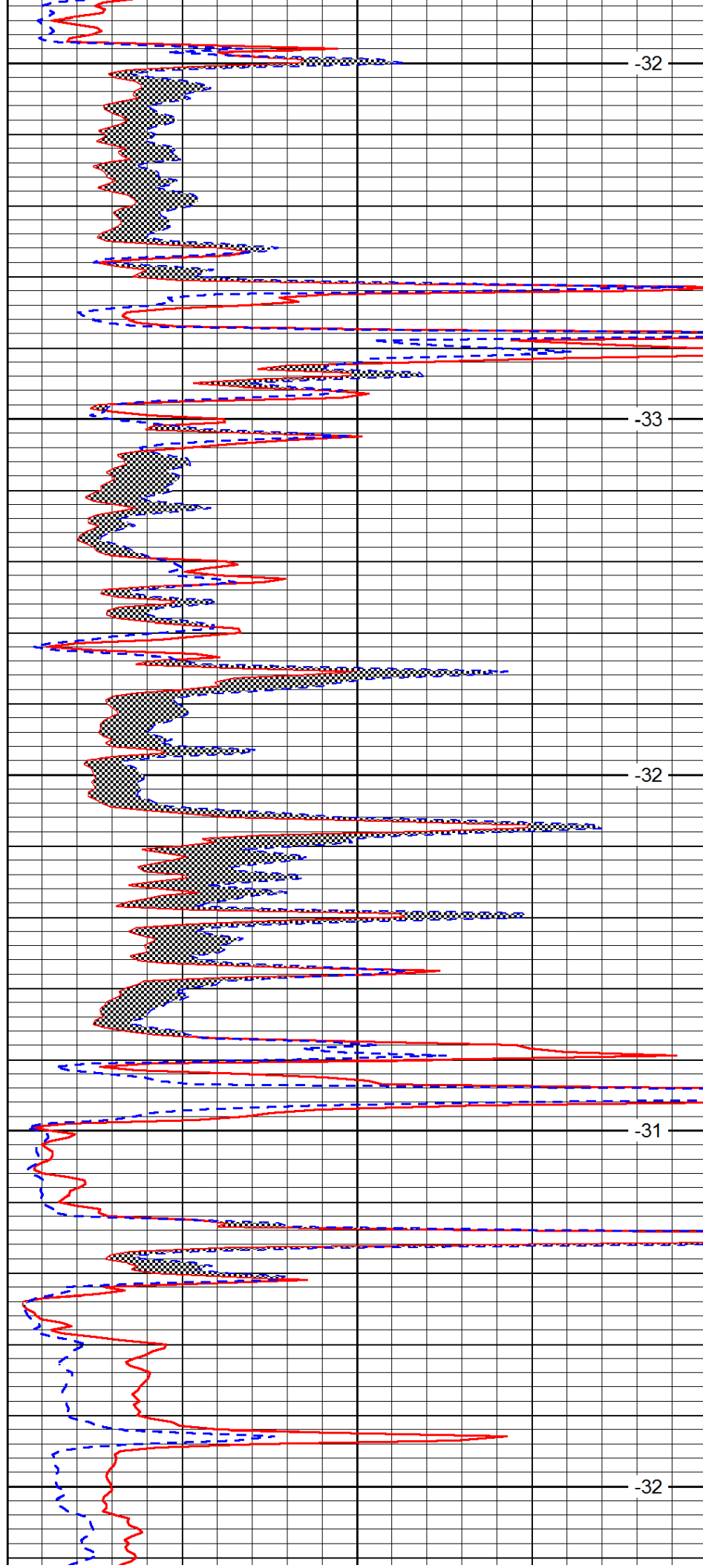
2700

2750

2800

2850

2900



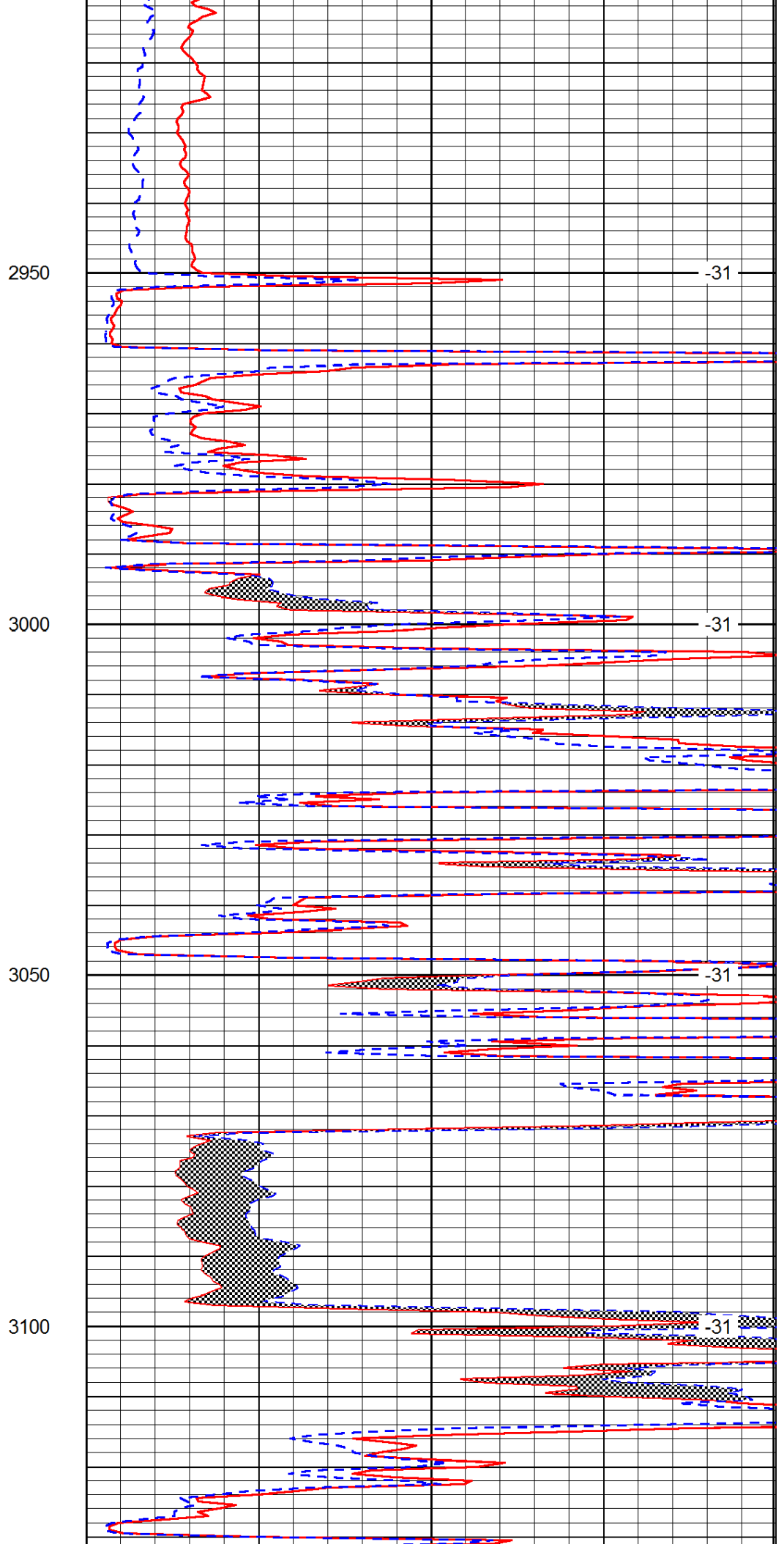
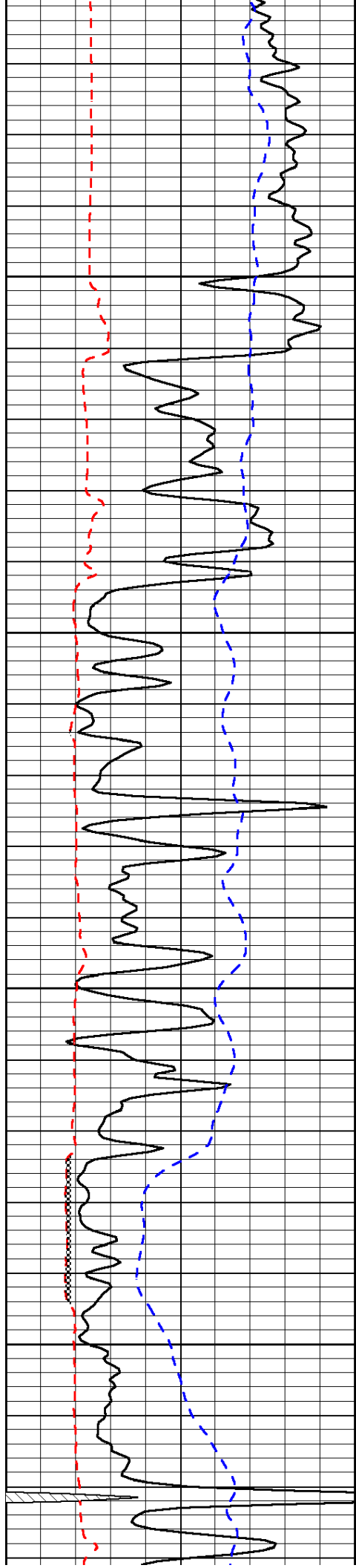
-32

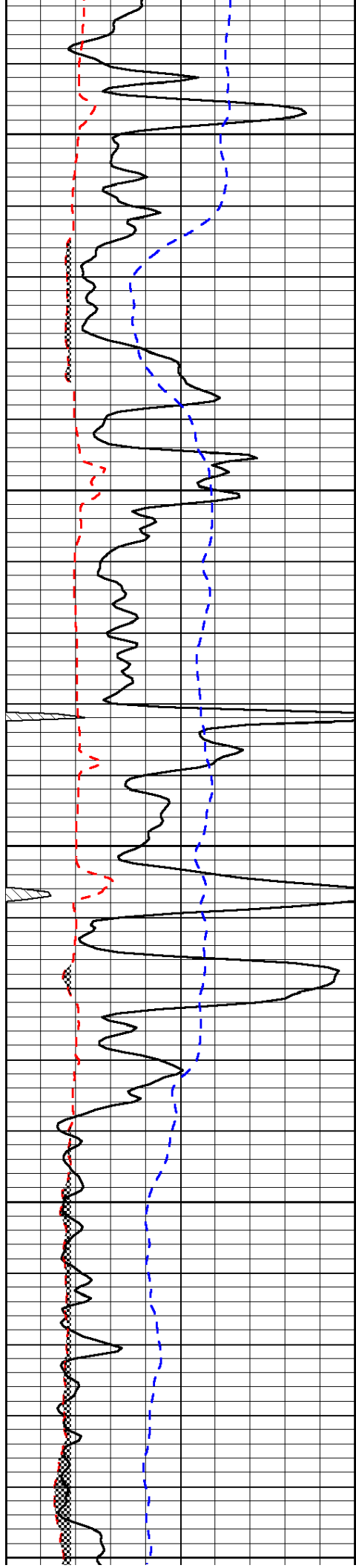
-33

-32

-31

-32





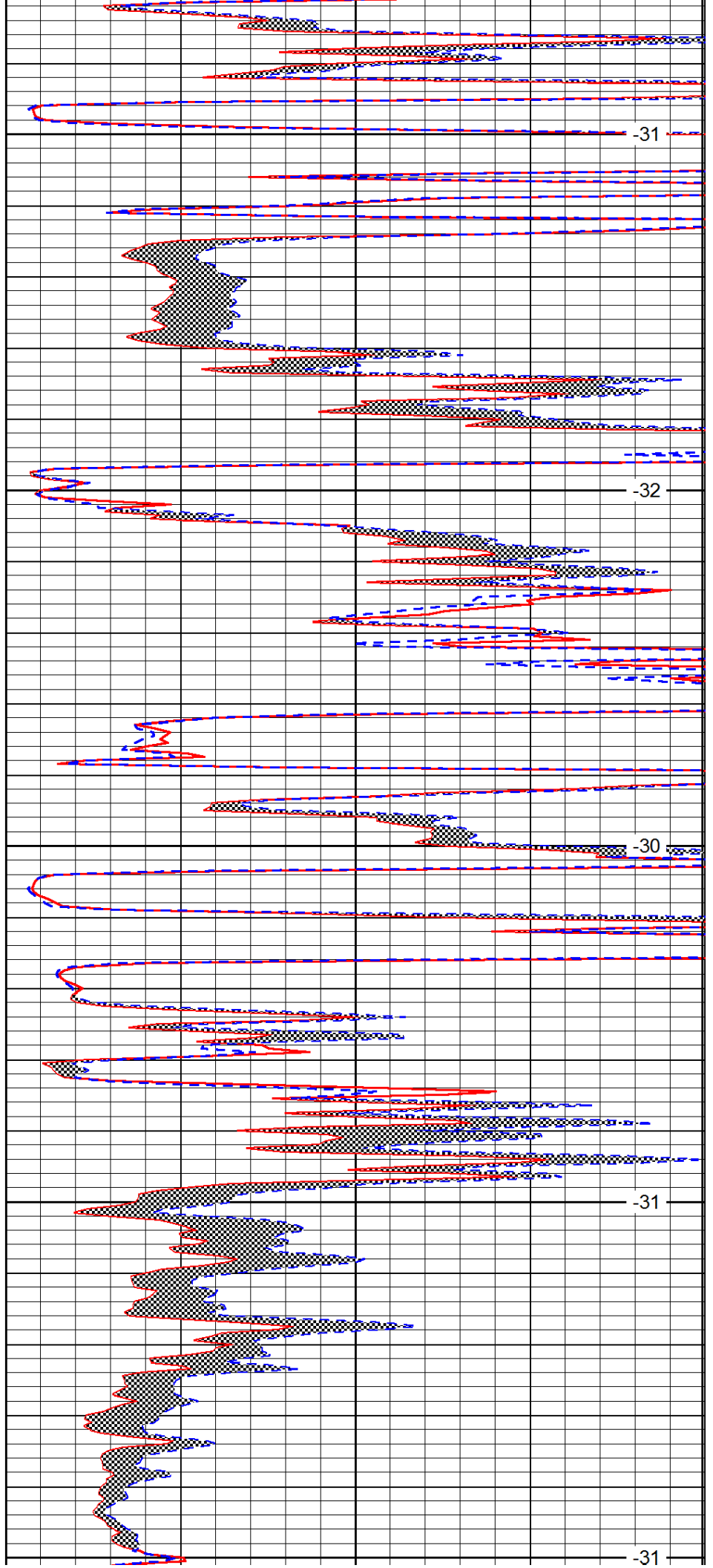
3150

3200

3250

3300

3350



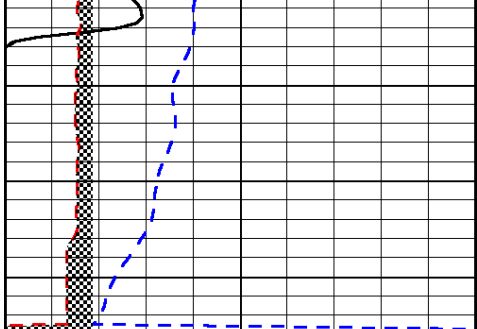
-31

-32

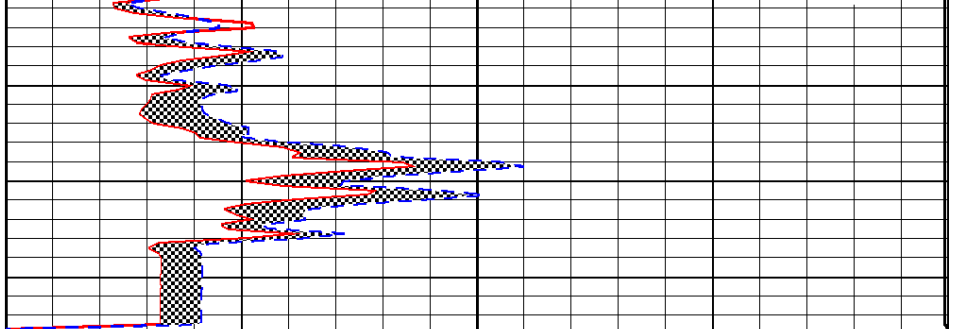
-30

-31

-31



0	Gamma Ray	150
6	Micro Log Caliper (GAPI)	16
-200	SP (mV)	0



0	Micro Inverse 1 X 1	40
0	Micro Normal 2"	40
15000	Line Weight	0

LSPD