

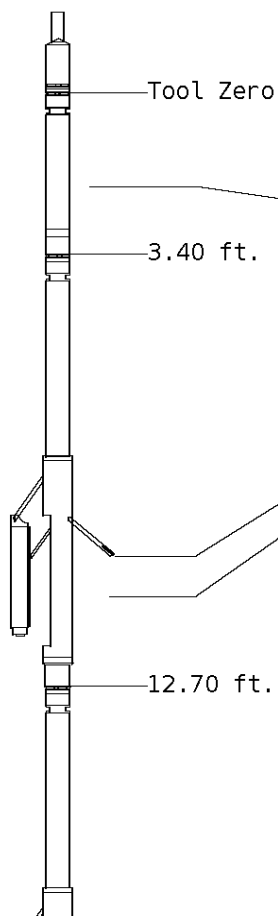
ALL PRESENTATIONS AS PER CUSTOMER REQUEST
 GRT, CNT, LDT, MLT, CST AND PIT RUN IN COMBINATION.
 CALIPERS ORIENTED ON X-Y AXIS.
 2.71 G/CC USED TO CALCULATED POROSITY.
 ANNULAR HOLE VOLUME CALCULATED USING 5.500" PRODUCTION CASING.
 PHIN IS CALIPER CORRECTED

GRT: GRP.
 CNT: PHIN, CLCNIN.
 LDT: PORL,LCORN,PECLN,LDENN,PORLLS,CLLDIN.
 MLT: NOR_RF, INV_RF, MSCLPIN.
 CST: PORS, CDTF, TT1PF, TT2PF, TT3PF, TT4PF, ITT.
 PIT: ILD, ILM, SPU, SFLAEC, CIRD

OPERATORS:
 P.JACOBS
 A. DJAHO

Tool String Schematic

Total Tool Length - 66.95 ft.
Maximum Outside diameter - 6.00 in.
Net Weight in Air - 1171.00 lbs.



Tool: GRT-B **Length:** 3.40 ft. **O.D.** 3.60 in.
 Gamma Ray Controller

Sonde ID :GRT-BB-006

Measure Point	Tool Offset	Stack Offset	Bottom Offset
GRP	2.00	2.00	64.95

Tool: CNT-AA **Length:** 9.30 ft. **O.D.** 4.36 in.
 Compensated Neutron A Pad on NDT-A

Sonde ID :NDT-AE-403

Source ID :N-1044

Pad ID :CNP-AA-103

Measure Point	Tool Offset	Stack Offset	Bottom Offset
CLCN	6.00	9.40	57.55
PHIN	6.80	10.20	56.75

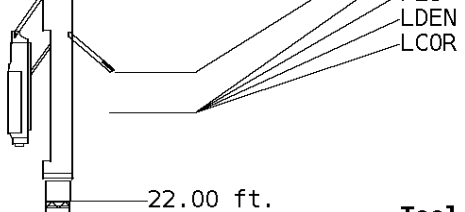
Tool: LDT-DA **Length:** 9.30 ft. **O.D.** 4.80 in.
 Litho Density D Pad on NDT-A

Sonde ID :NDT-AH-116

Source ID :CSV-587

Pad ID :LDP-DA-47

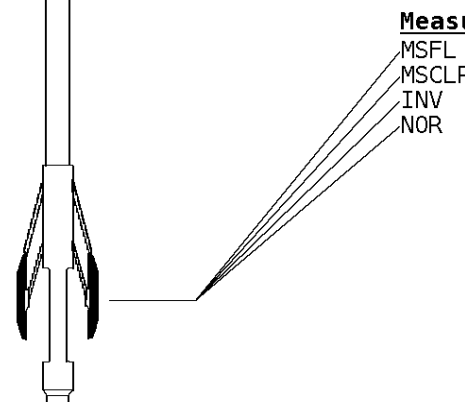
Measure Point	Tool Offset	Stack Offset	Bottom Offset
CLLD	6.00	18.70	48.25
PEL	7.00	19.70	47.25
PES	7.40	20.10	46.85



7.20 19.90 47.05
 7.20 19.90 47.05

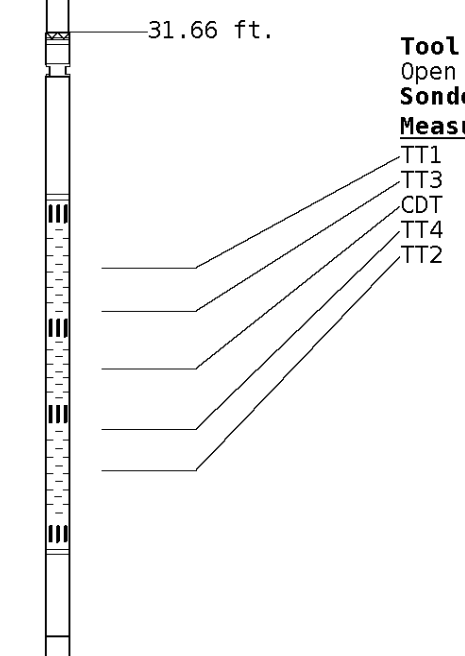
Tool: MST-DA **Length:** 9.66 ft. **O.D.** 6.00 in.
 Micro Spherically Focused (IC)
Sonde ID :MST-DA-36

Measure Point	Tool Offset	Stack Offset	Bottom Offset
MSFL	7.60	29.60	37.35
MSCLP	7.60	29.60	37.35
INV	7.60	29.60	37.35
NOR	7.60	29.60	37.35



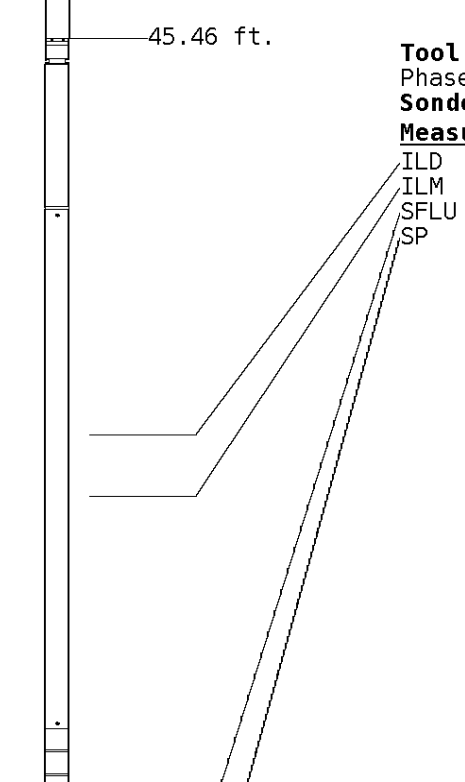
Tool: CST-AD **Length:** 13.80 ft. **O.D.** 3.60 in.
 Open Hole Sonic
Sonde ID :CST-AB-012

Measure Point	Tool Offset	Stack Offset	Bottom Offset
TT1	4.80	36.46	30.49
TT3	5.80	37.46	29.49
CDT	7.30	38.96	27.99
TT4	8.80	40.46	26.49
TT2	9.80	41.46	25.49



Tool: PIT-CA **Length:** 21.49 ft. **O.D.** 3.62 in.
 Phased Dual Induction w/ RM & D
Sonde ID :PIT-AB-18

Measure Point	Tool Offset	Stack Offset	Bottom Offset
ILD	8.92	54.38	12.56
ILM	10.10	55.56	11.39
SFLU	17.49	62.95	4.00
SP	20.60	66.06	0.88



LWT 66.95 ft.

Well File: RFP C HEIM 2-19D AUG 24 QUINT

Scale: 1:240

Format: NLD-240

Segment: V1.D1.S7 MAIN

Acquired: 2013-08/24 08:47 3.3.0-12261

Reference: 0

Processed: 2013-08/24 09:51 3.3.0-12261

CALIPER MICRO INCHES (IN)	
16	26
6	16

BIT SIZE INCHES (IN)	
6	16

NEUTRON (Y) CALIPER INCHES (IN)	
16	26
6	16

NORMAL OHMM	
0	40
INVERSE OHMM	
0	40

DENSITY (X) CALIPER INCHES (IN)	
16	26
6	16

Volume Quartz	PE CROSS-SECTION BARN/ELECTRON
0	10

DENSITY CORRECTION G/CC
-0.25
0.25

TENSION LBS	
10000	0

Volume Calcite	DENSITY POROSITY (2.71g/cc) PERCENT
70	30
30	-10
-10	-50

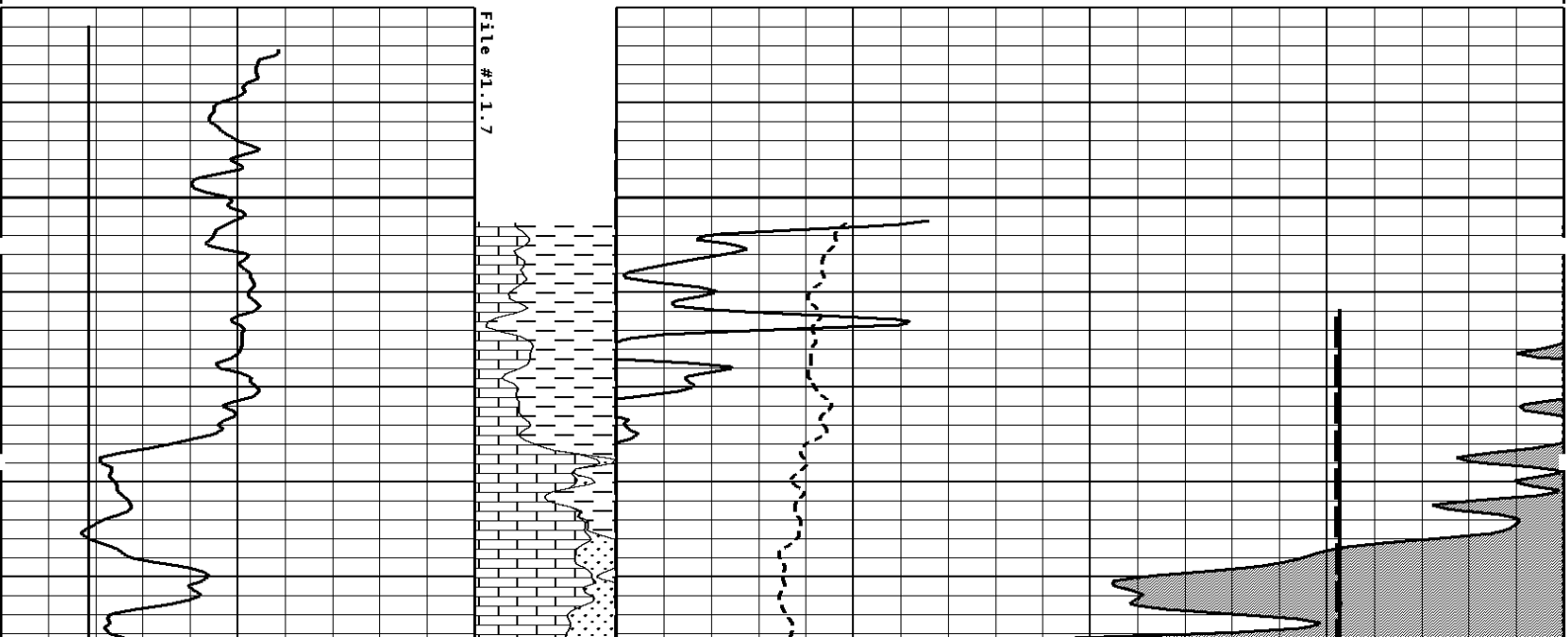
DENSITY POROSITY (2.71g/cc) PERCENT
30
-10
-50

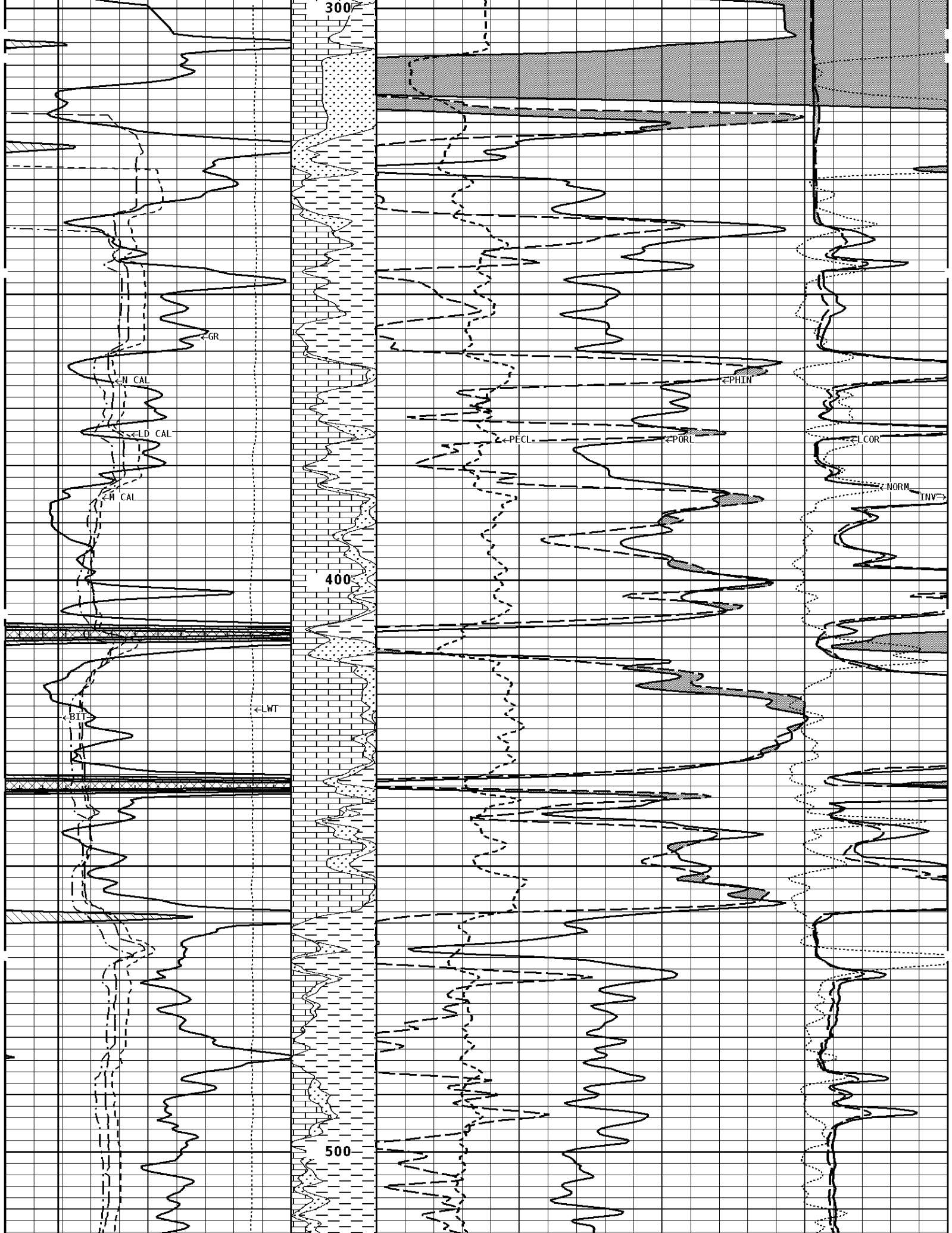
GAMMA RAY API UNITS	
150	300
0	150

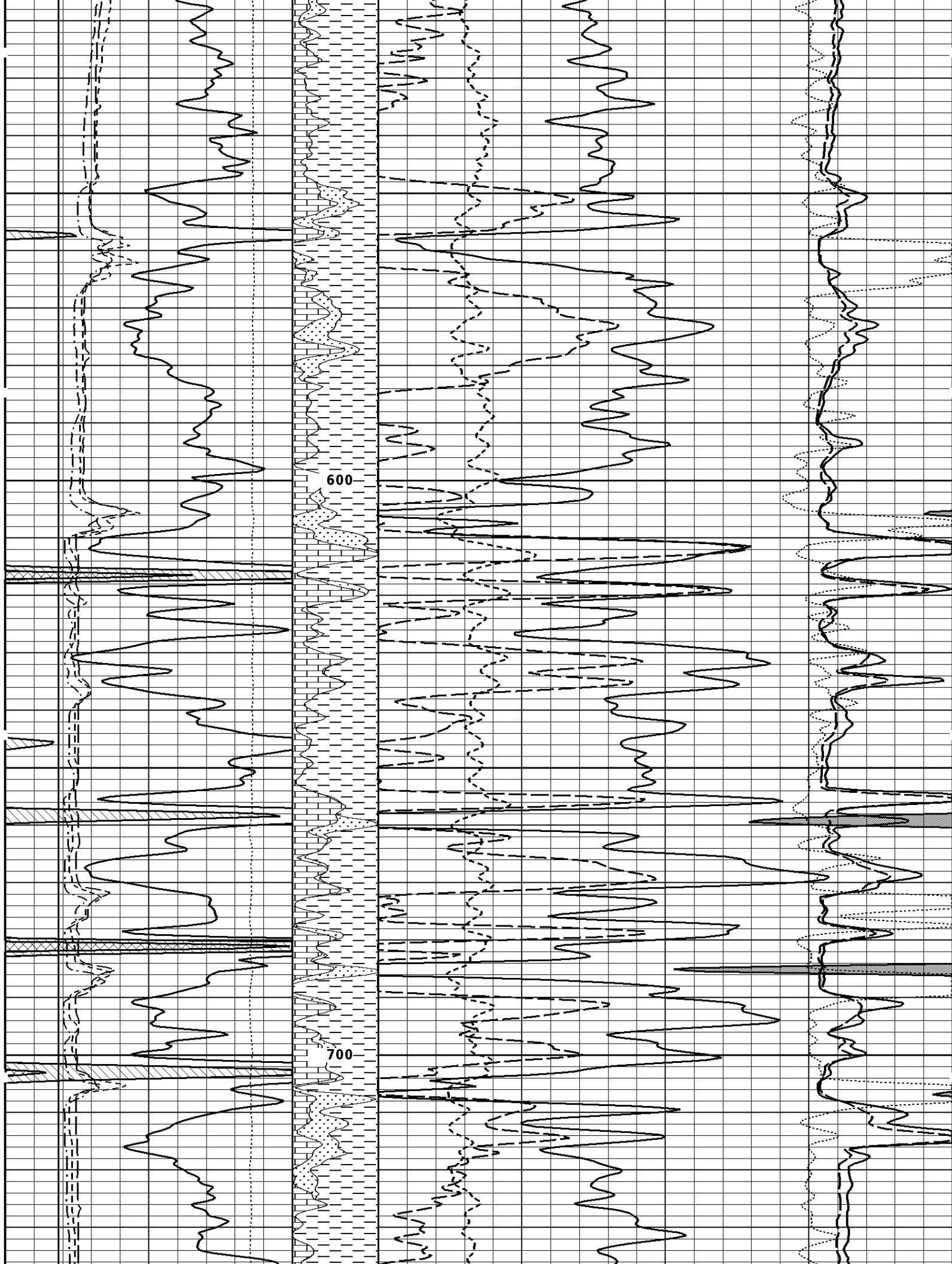
Volume Dolo/Shale	NEUTRON POROSITY (LIMESTONE) PERCENT
30	-10

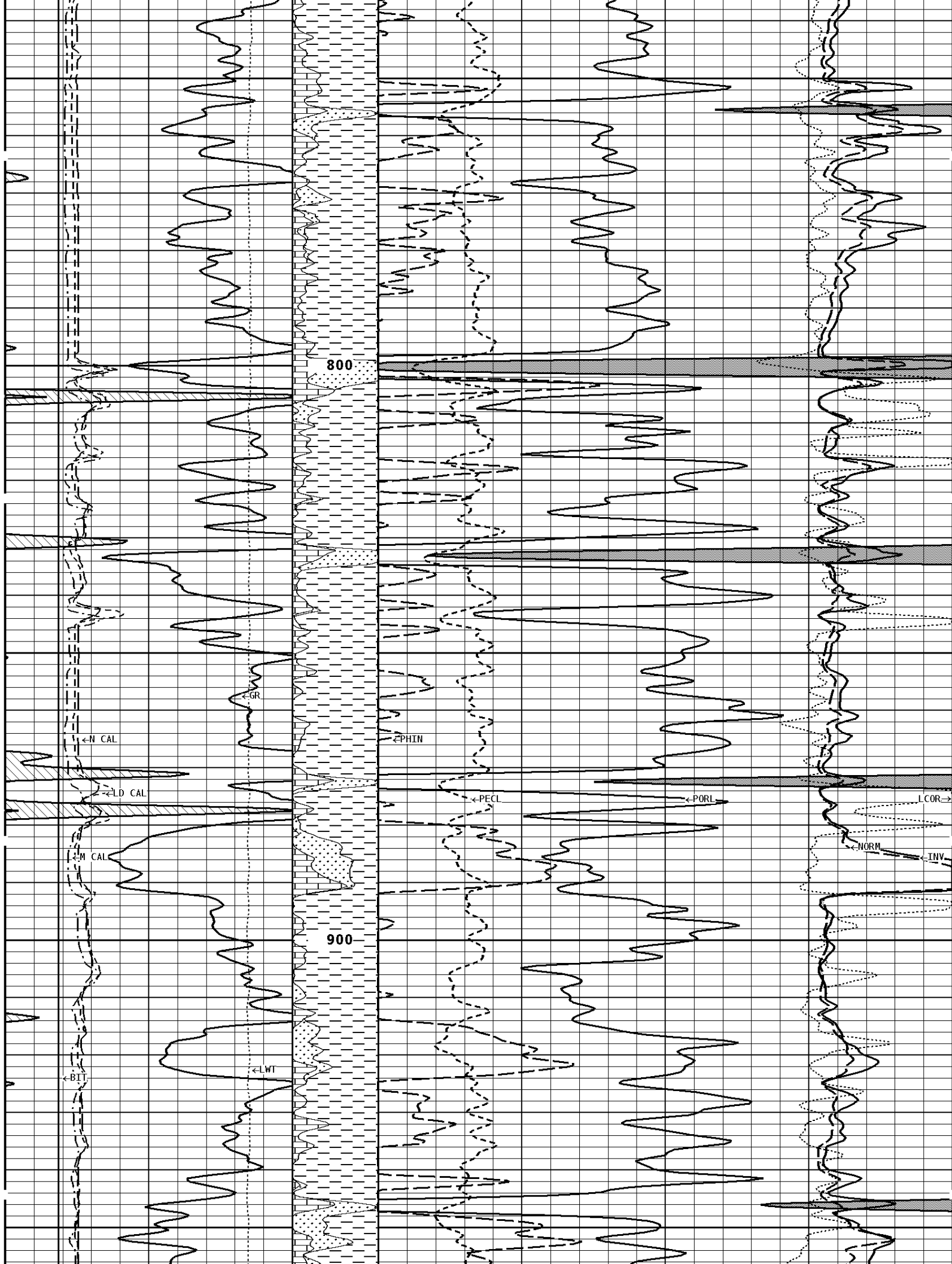
NEUTRON POROSITY (LIMESTONE) PERCENT
-10

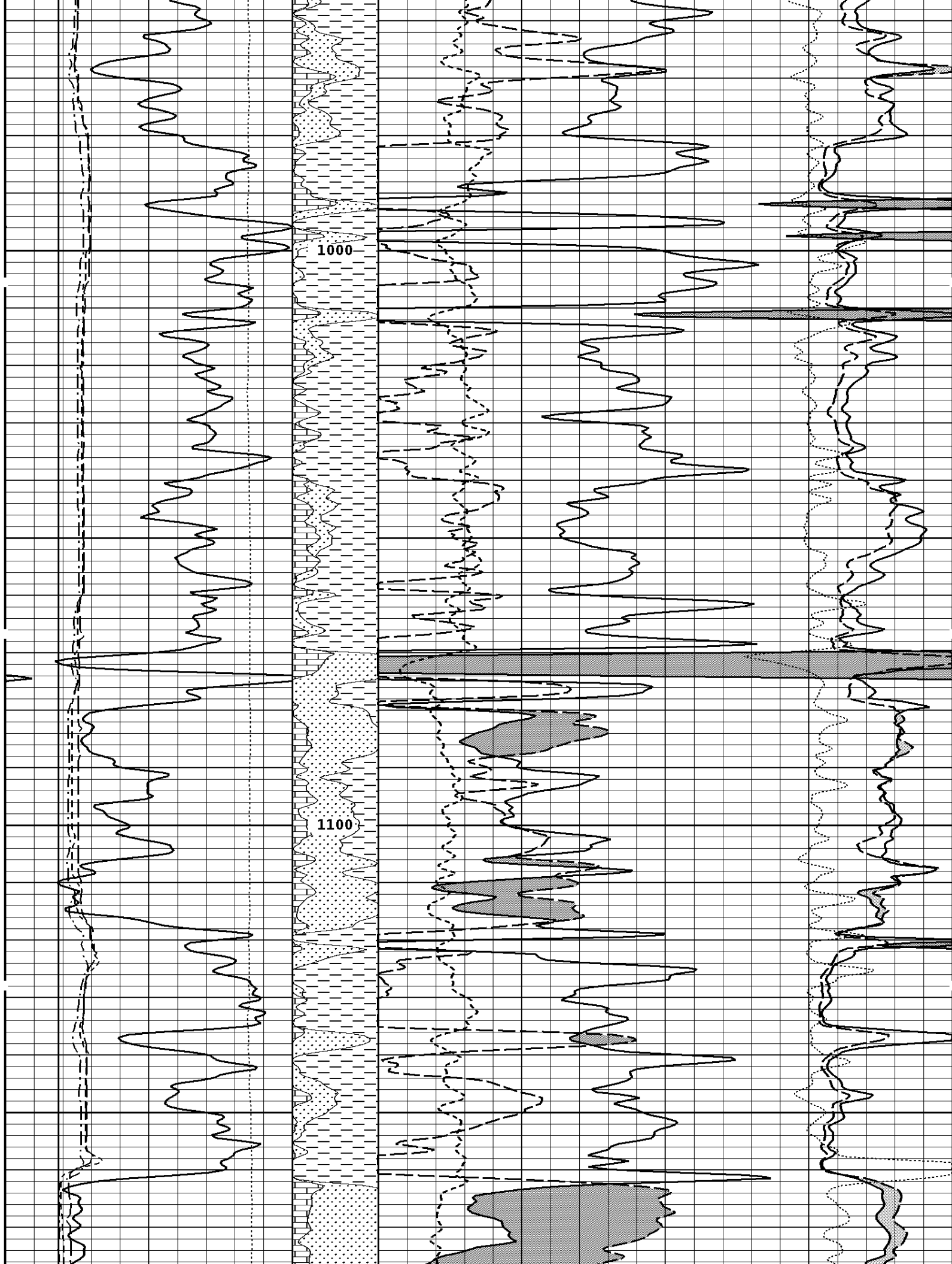
1:240 MAIN SECTION

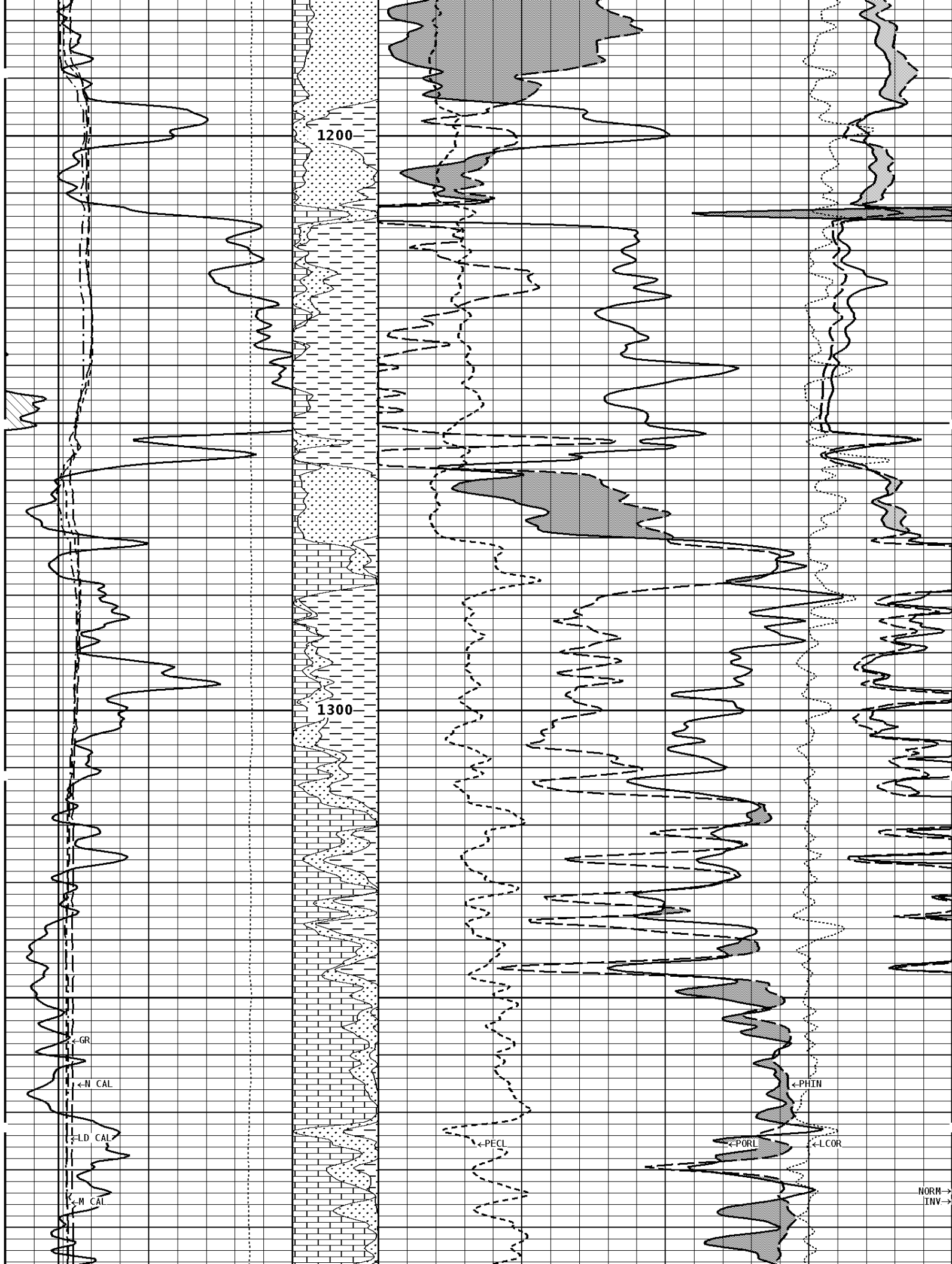












1200

1300

← GR

← N CAL

← LD CAL

← M CAL

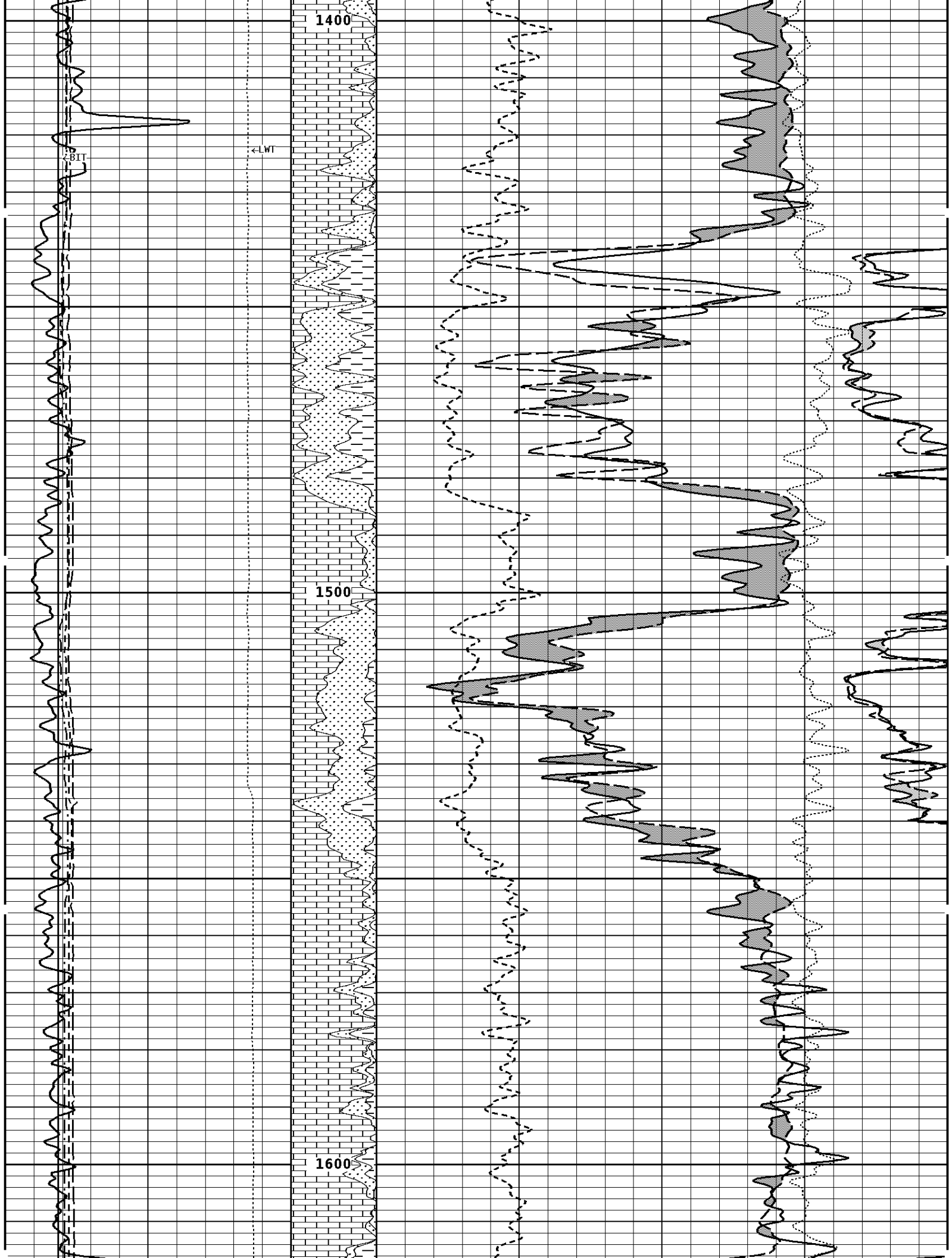
← PECL

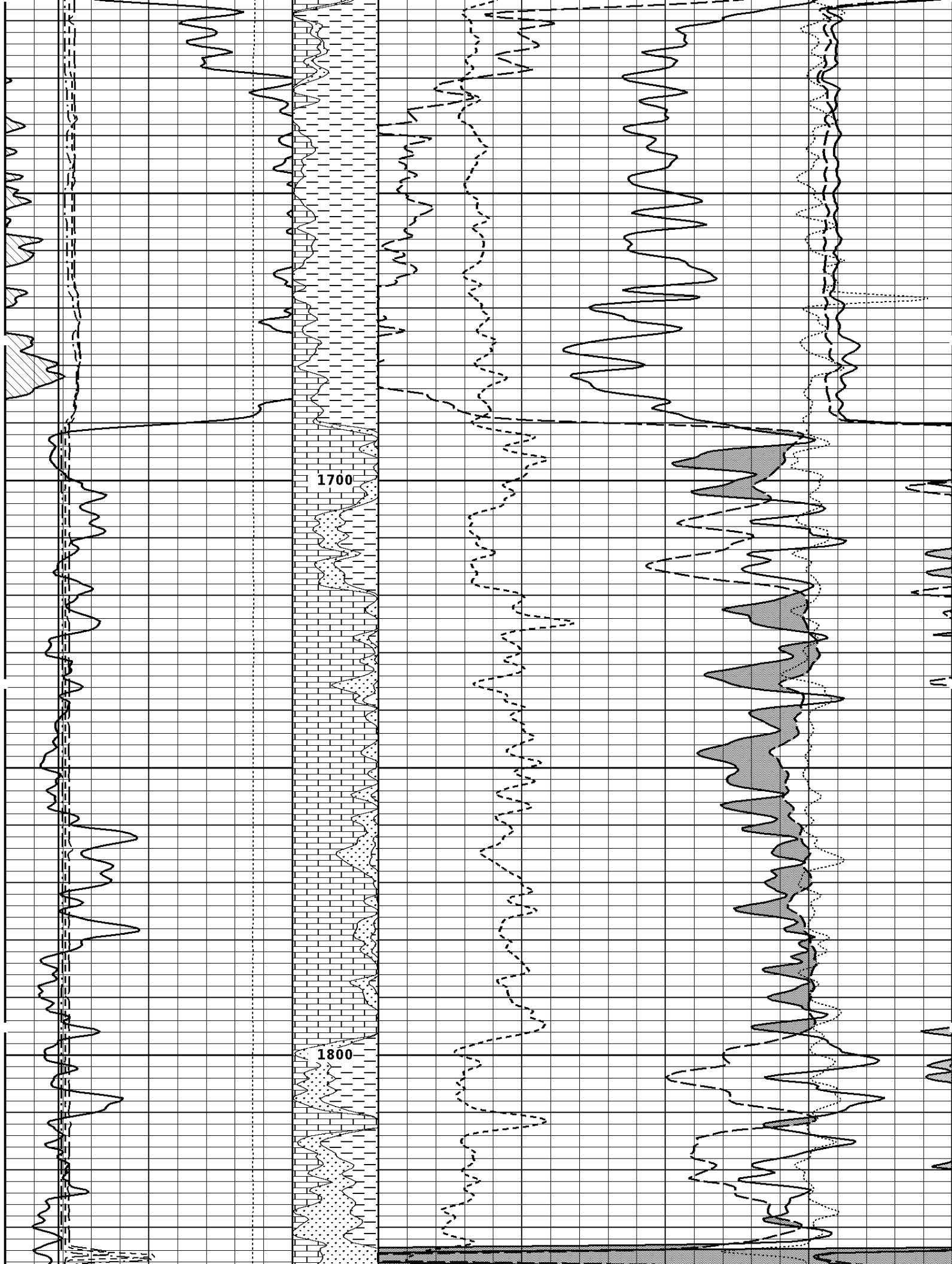
← PORL

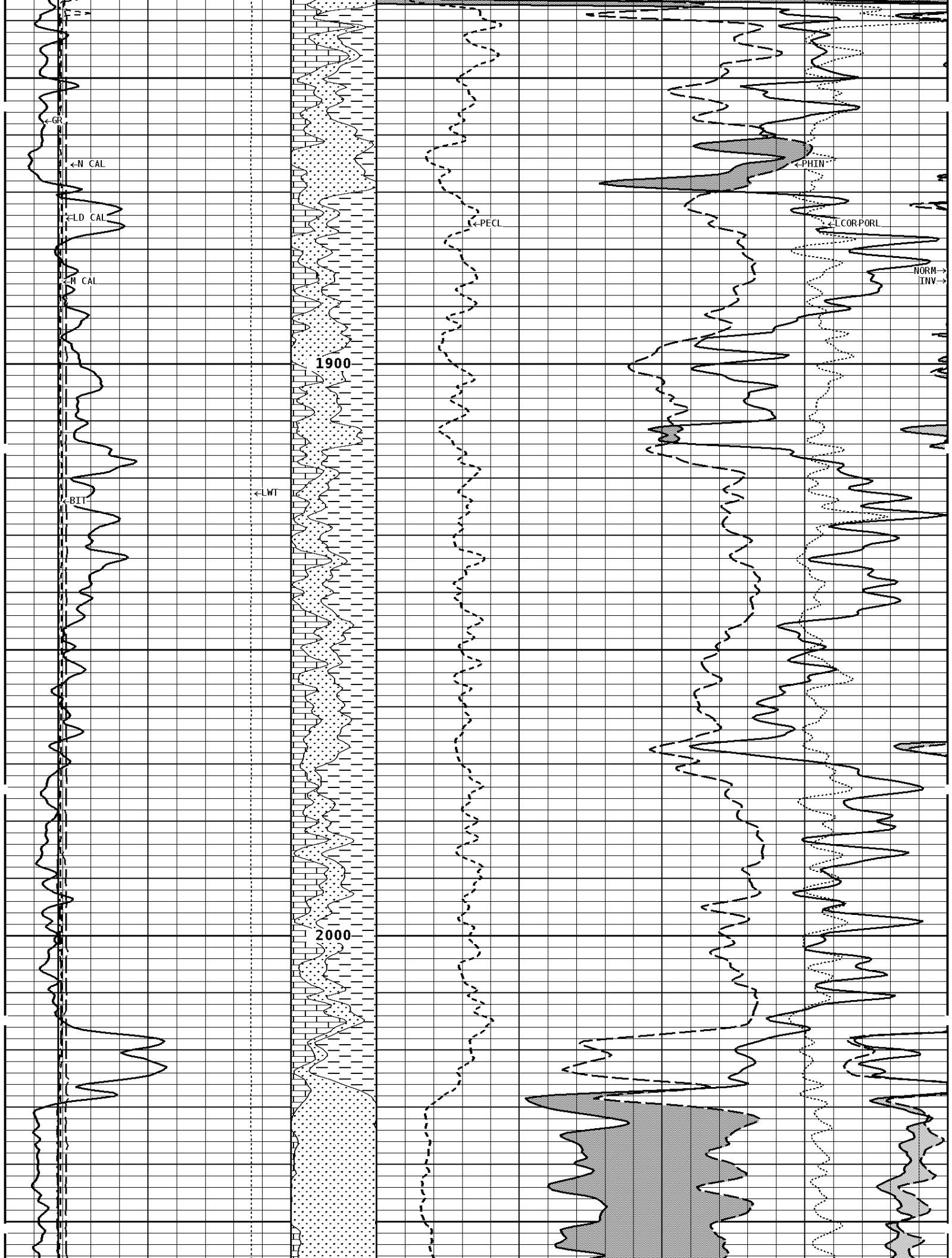
← PHIN

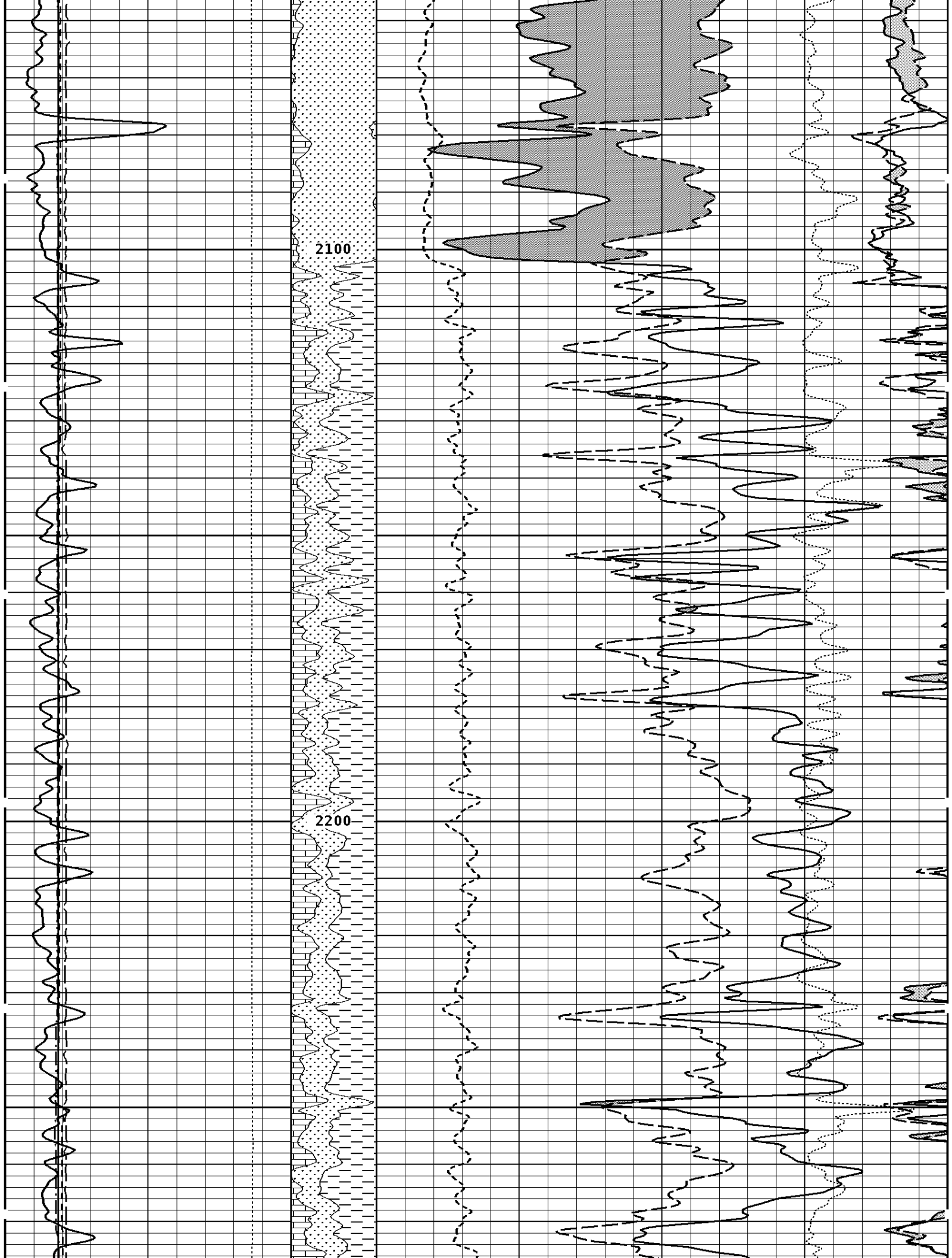
← L COR

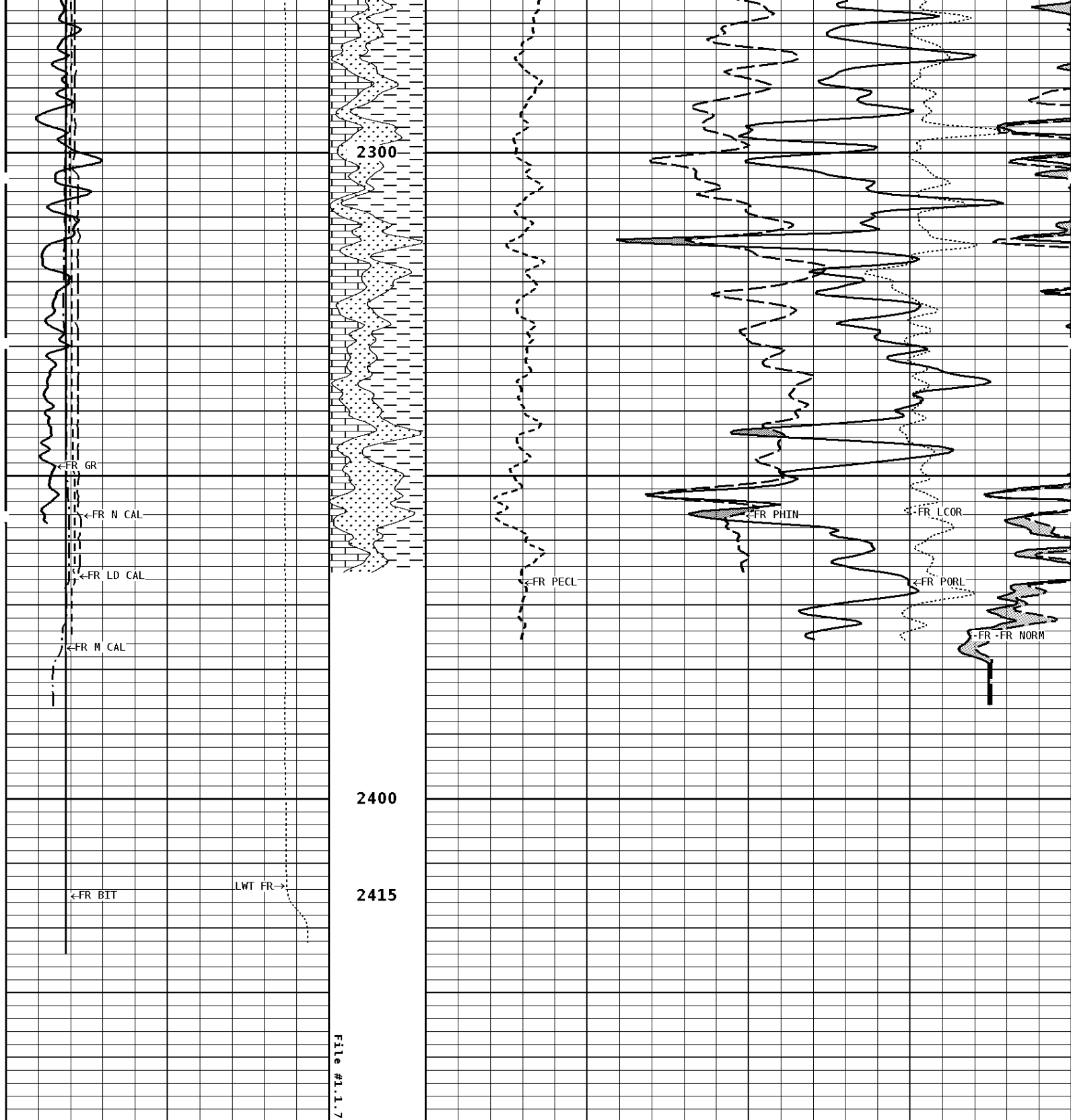
NORM ->
INV ->











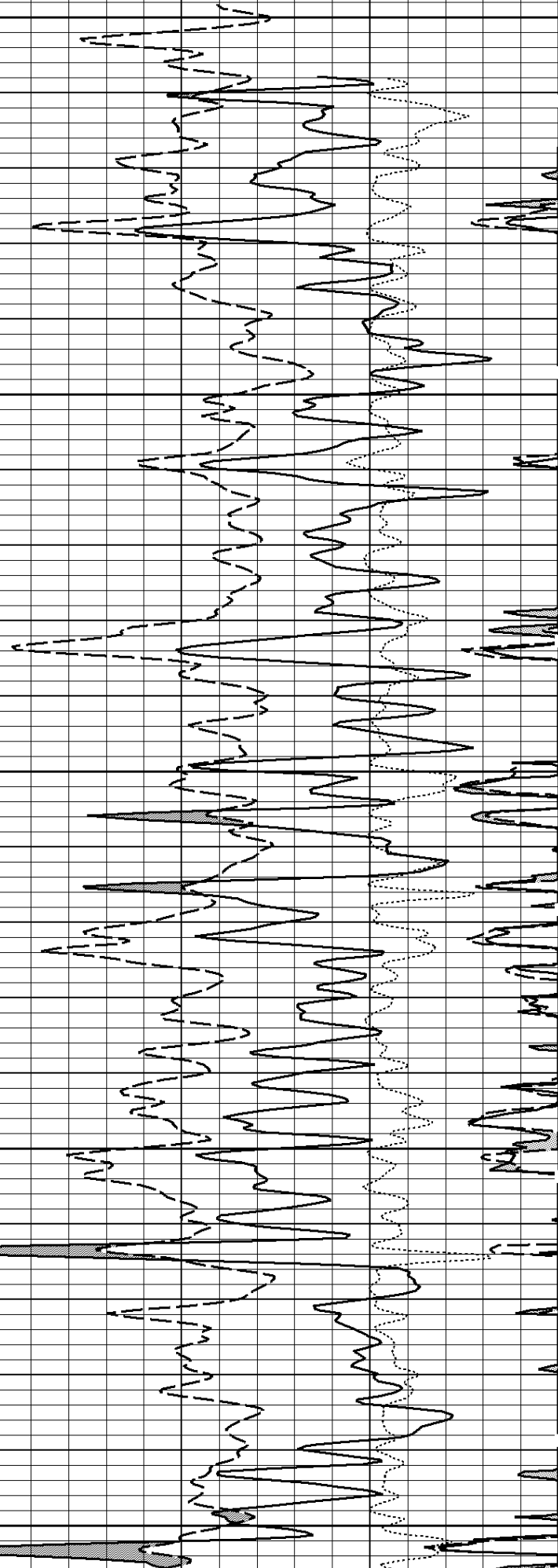
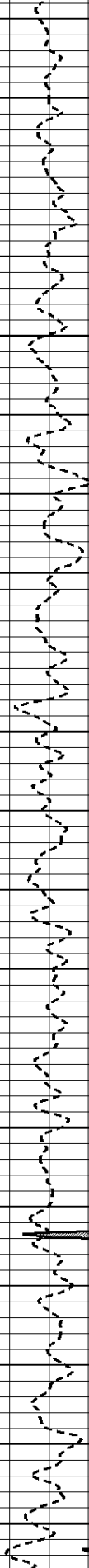
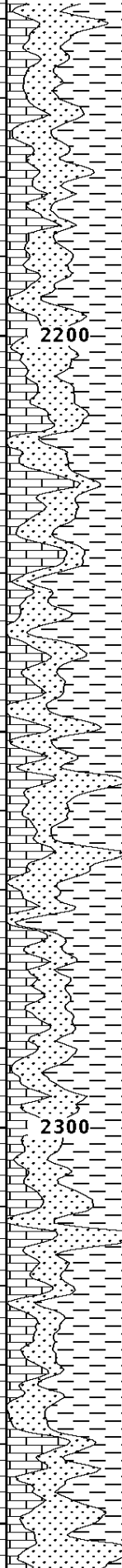
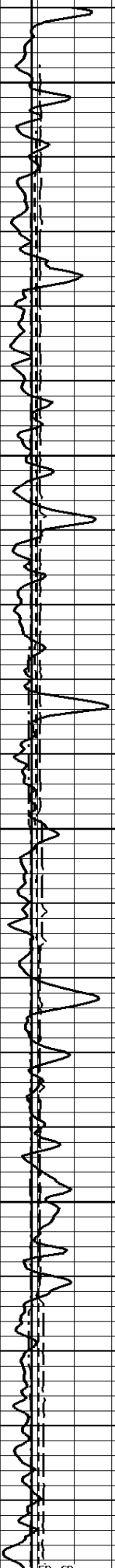
1:240 MAIN SECTION

<p>GAMMA RAY API UNITS</p> <p>150 0 300 150</p>	<p>Volume Dolo/Shale</p> <p>30</p>	<p>NEUTRON POROSITY (LIMESTONE) PERCENT</p> <p>-10</p>
<p>TENSION LBS</p> <p>10000 0</p>	<p>Volume Calcite</p> <p>70 30 -10</p>	<p>DENSITY POROSITY (2.71g/cc) PERCENT</p> <p>30 -10 -50</p>

9 T TA

2200

2300

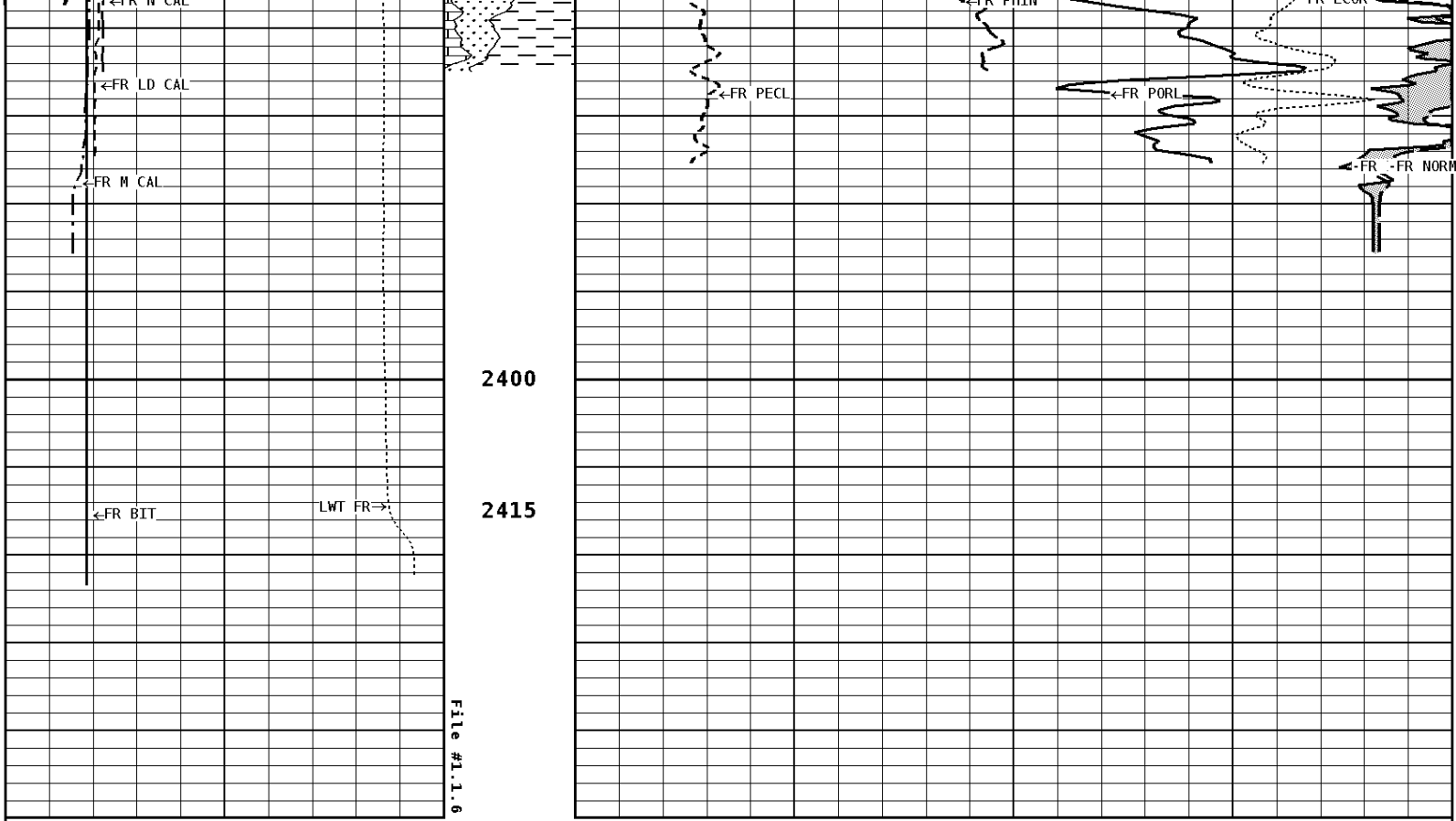


FR GR

FR N CA

FR DTH

FR LCOB



1:240 REPEAT SECTION

GAMMA RAY API UNITS 150 0 300 150		Volume Dolo/Shale 30	NEUTRON POROSITY (LIMESTONE) PERCENT ----- -10	
TENSION LBS 10000 0		Volume Calcite 70 30 -10	DENSITY POROSITY (2.71g/cc) PERCENT ----- 30 -10 -50	
DENSITY (X) CALIPER INCHES (IN) 16 6 26 16		Volume Quartz 0	PE CROSS-SECTION BARNS/ELECTRON 10	DENSITY CORRECTION G/CC ----- -0.25 0.25
NEUTRON (Y) CALIPER INCHES (IN) 16 6 26 16				INVERSE OHM 0 40
BIT SIZE INCHES (IN) 6 16				NORMAL OHM 0 40
CALIPER MICRO INCHES (IN) 16 6 26 16				

*** Borehole Zone Factors ***

Zone 1 99999.0 to 0.0 Feet			
Matrix Density	_____	2.71	g/cc
Fluid Density	_____	1.00	g/cc
Formation Matrix	_____	Limestone	

Formation Matrix	Limestone
Drill Bit Size	7.875 in
Casing Diameter	4.500 in
Casing Thickness	0.250 in
Casing Correction (PHI N)	Disable

Well File: RFP C HEIM 2-19D AUG 24 QUINT

Scale: 1:240 Format: LDT-240

Segment: V1.D1.S7 MAIN

Acquired: 2013-08/24 08:47 3.3.0-12261

Reference: 0

Processed: 2013-08/24 09:51 3.3.0-12261

BIT SIZE INCHES (IN)	
6	16

NEUTRON (Y) CALIPER INCHES (IN)	
16	26
6	16

DENSITY (X) CALIPER INCHES (IN)	
16	26
6	16

TENSION LBS	
10000	0

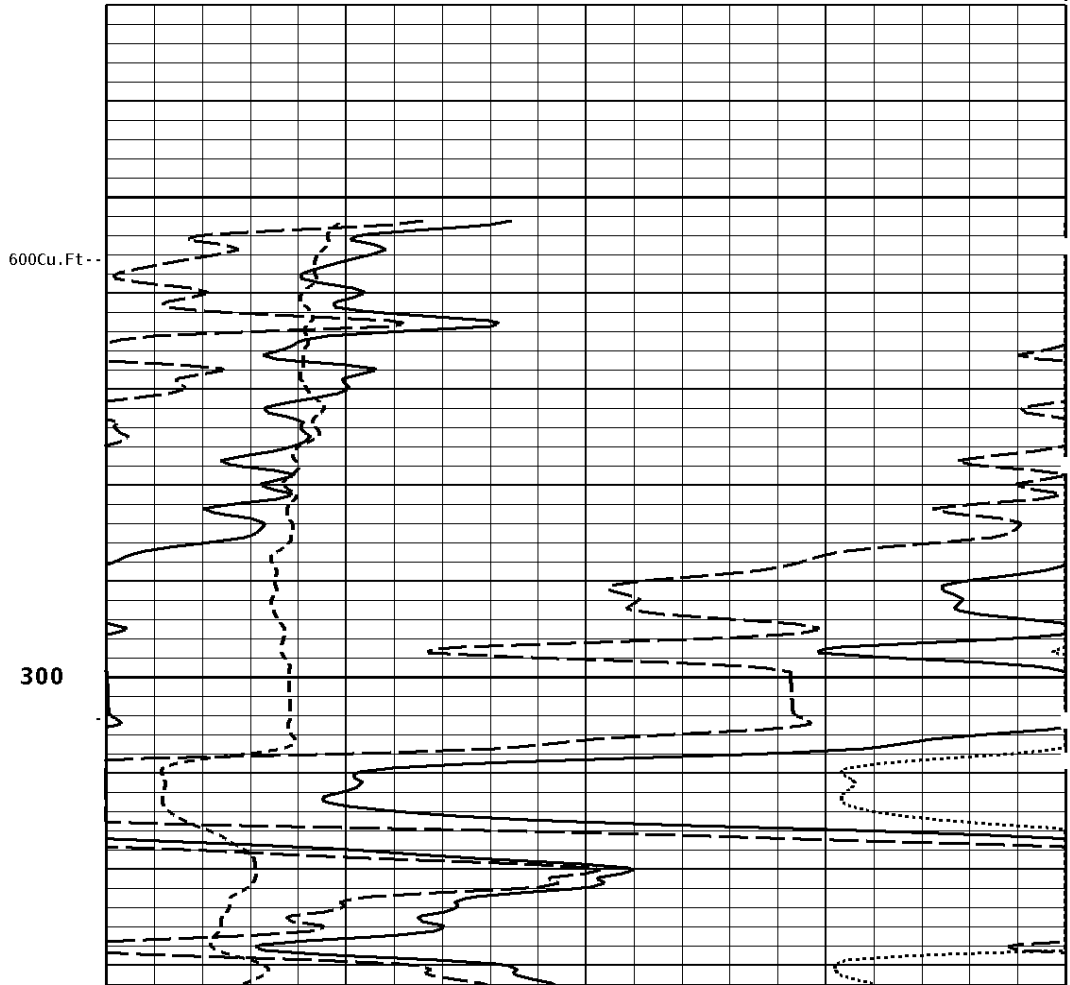
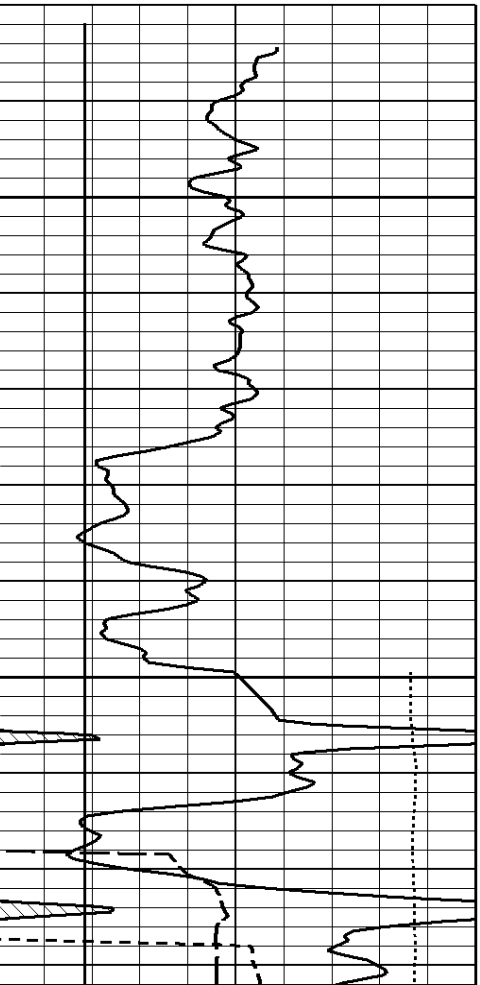
GAMMA RAY API UNITS	
150	300
0	150

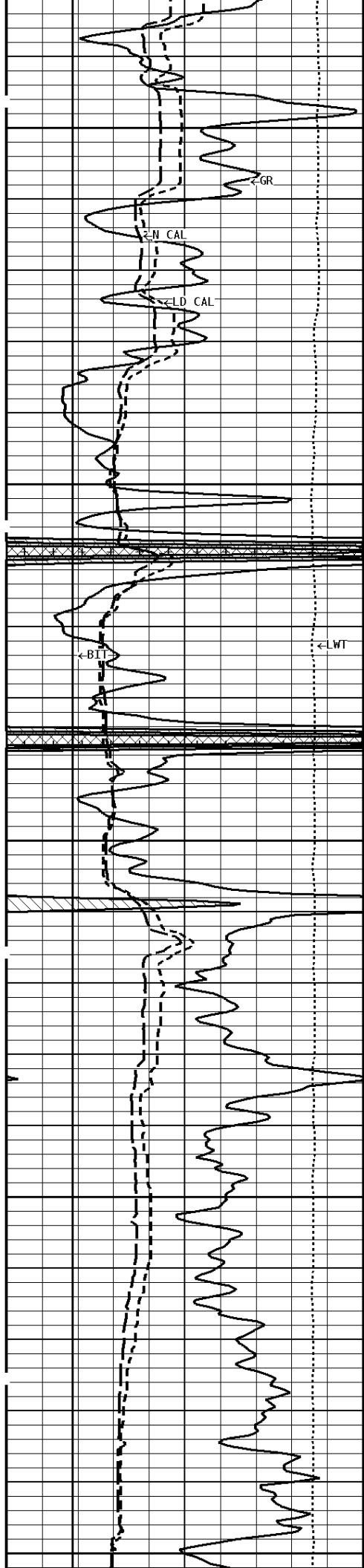
PE CROSS-SECTION BARN/ELECTRON	DENSITY CORRECTION G/CC
0	10 -0.25
	0.25

COMPENSATED BULK DENSITY G/CC	
3.0	4.0
2.0	3.0
1.0	2.0

DENSITY POROSITY (2.71g/cc) PERCENT	
70	30
30	-10
-10	-50

1:240 MAIN SECTION
BULK DENSITY





-800Cu.Ft

←GR

←EN CAL

←FLD CAL

←BIT

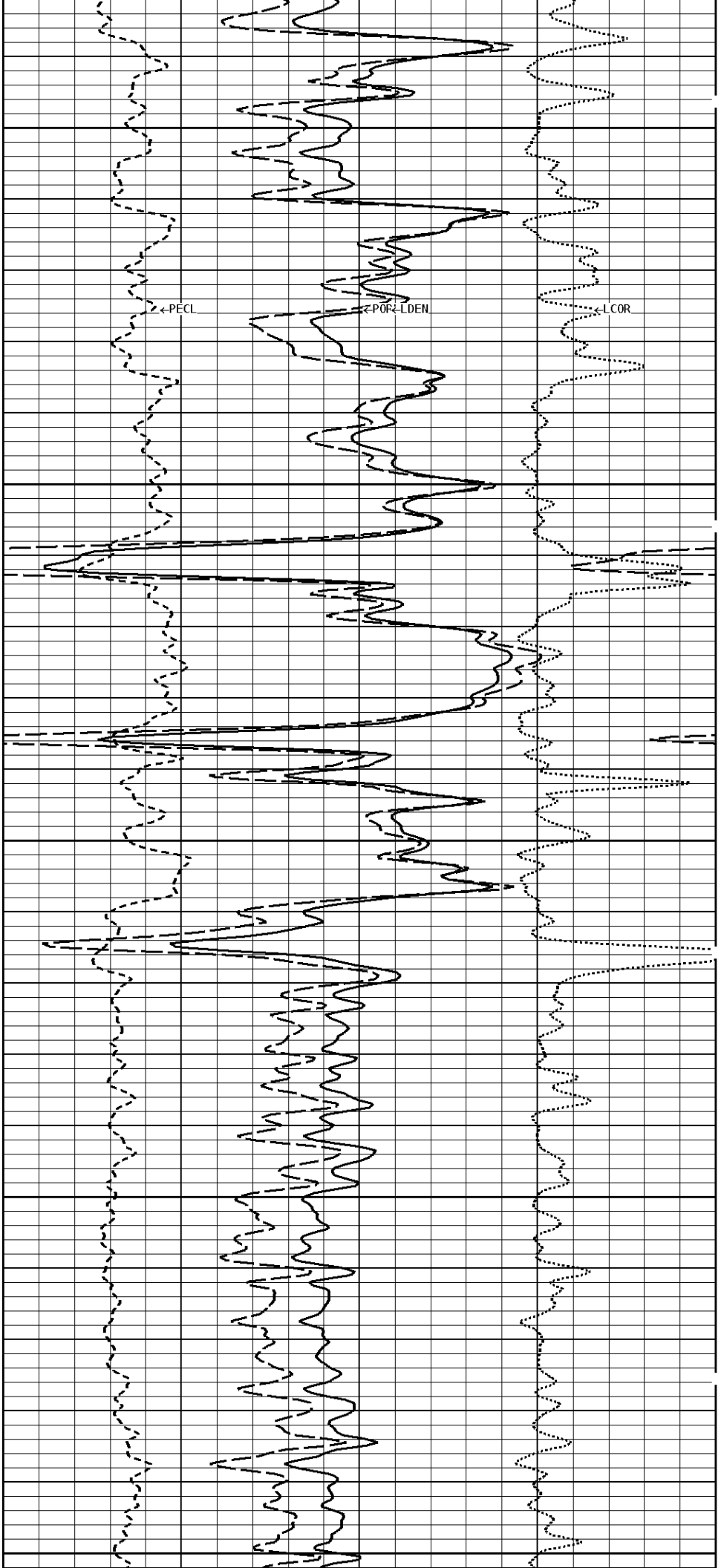
←LWT

400

500

500Cu.Ft

-700Cu.Ft



←PECL

←POF L DEN

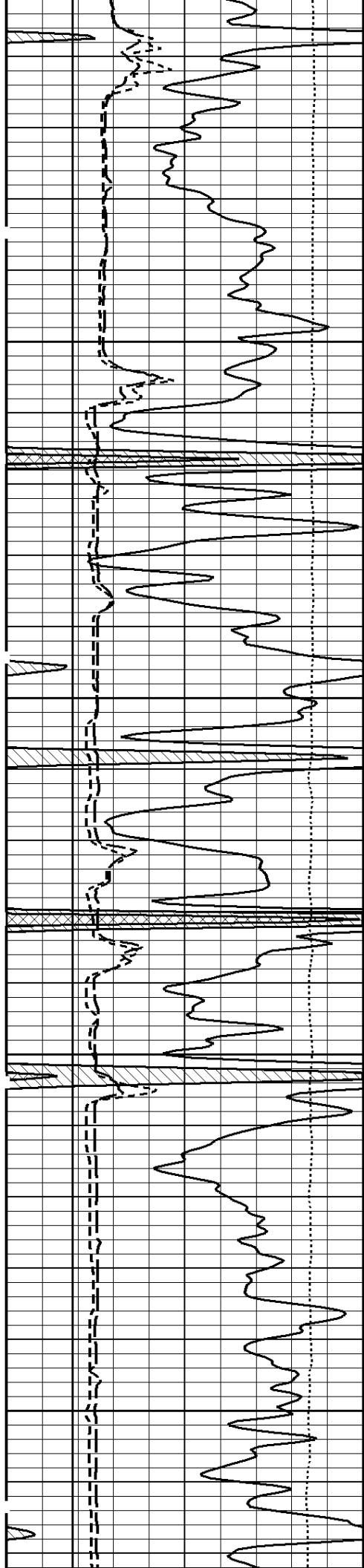
←L COR

400

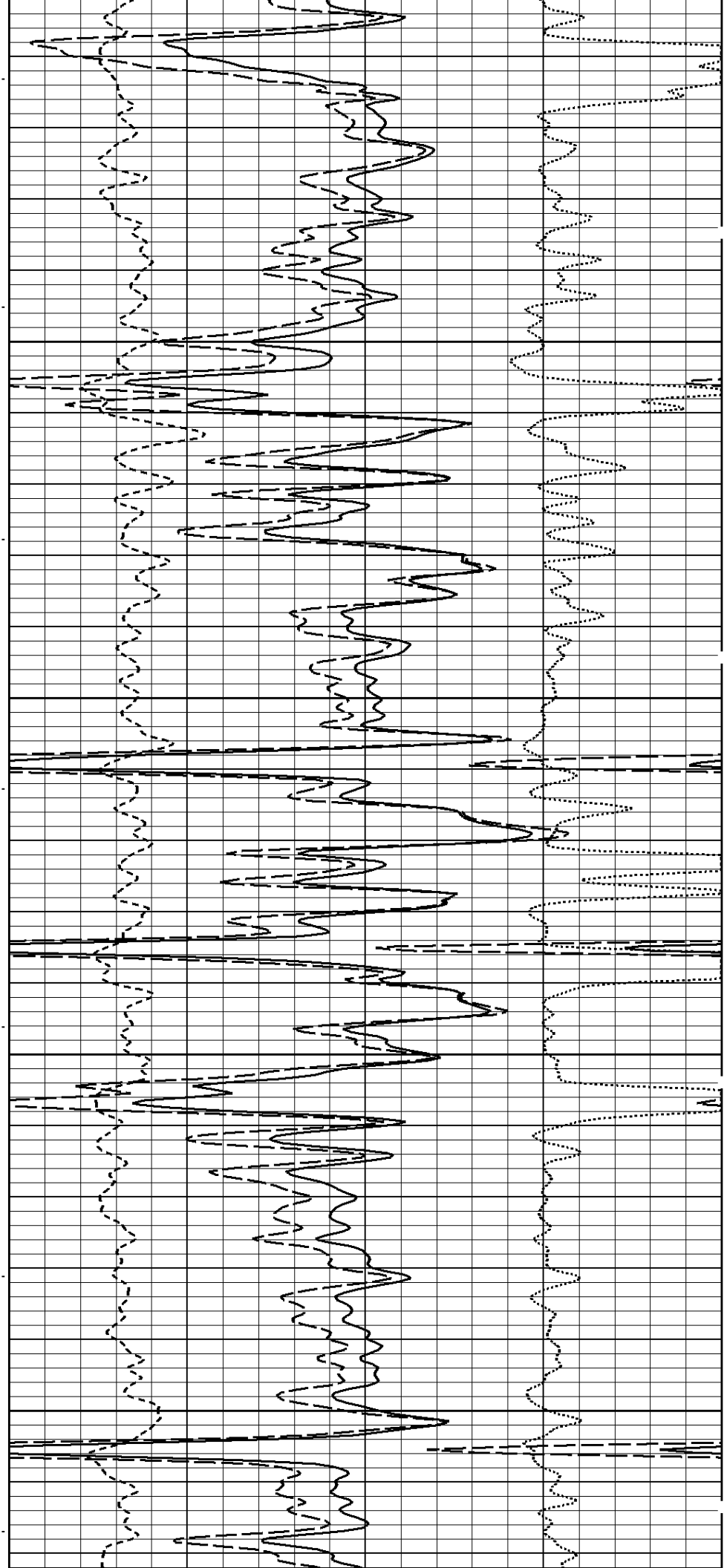
500

500Cu.Ft

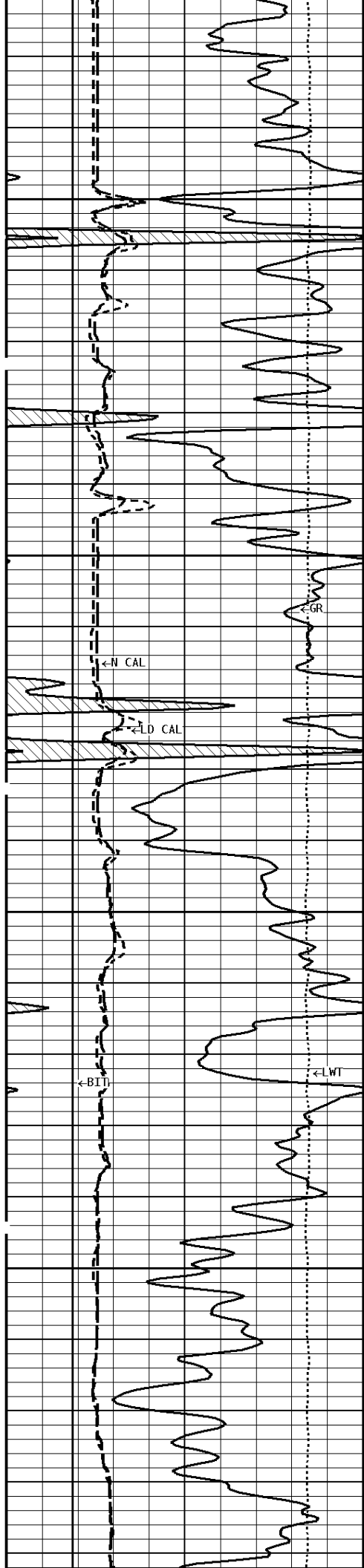
-700Cu.Ft



600



700

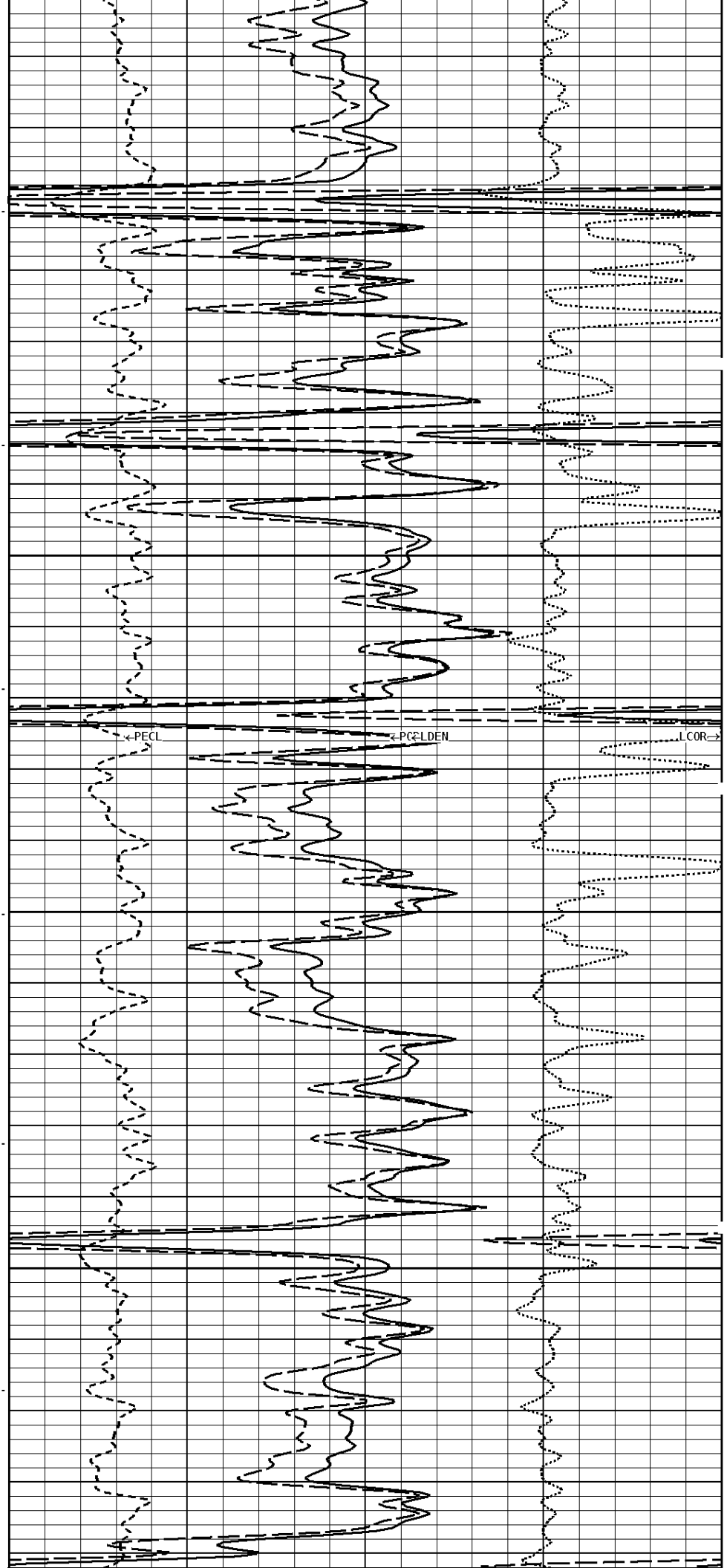


-600Cu.Ft

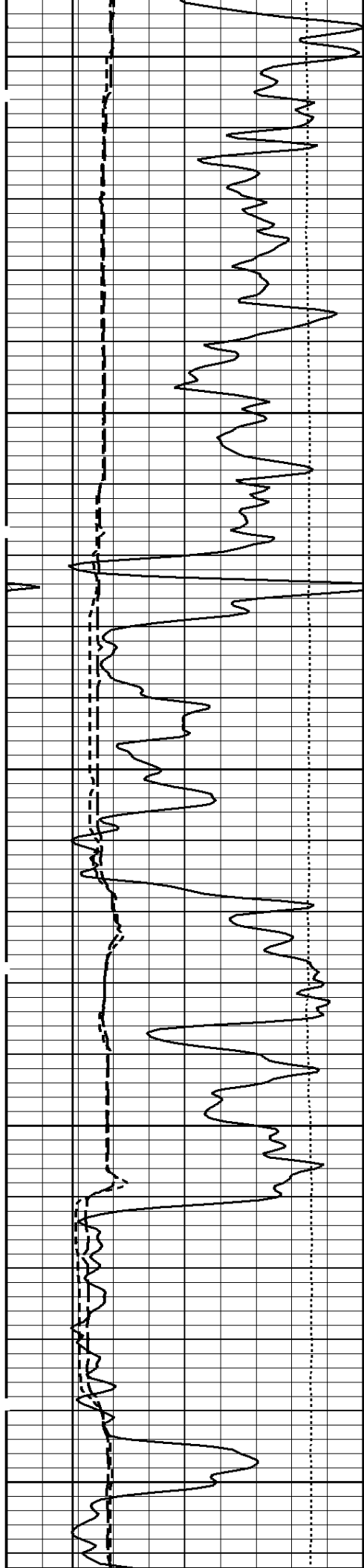
800

400Cu.Ft

900



L COR

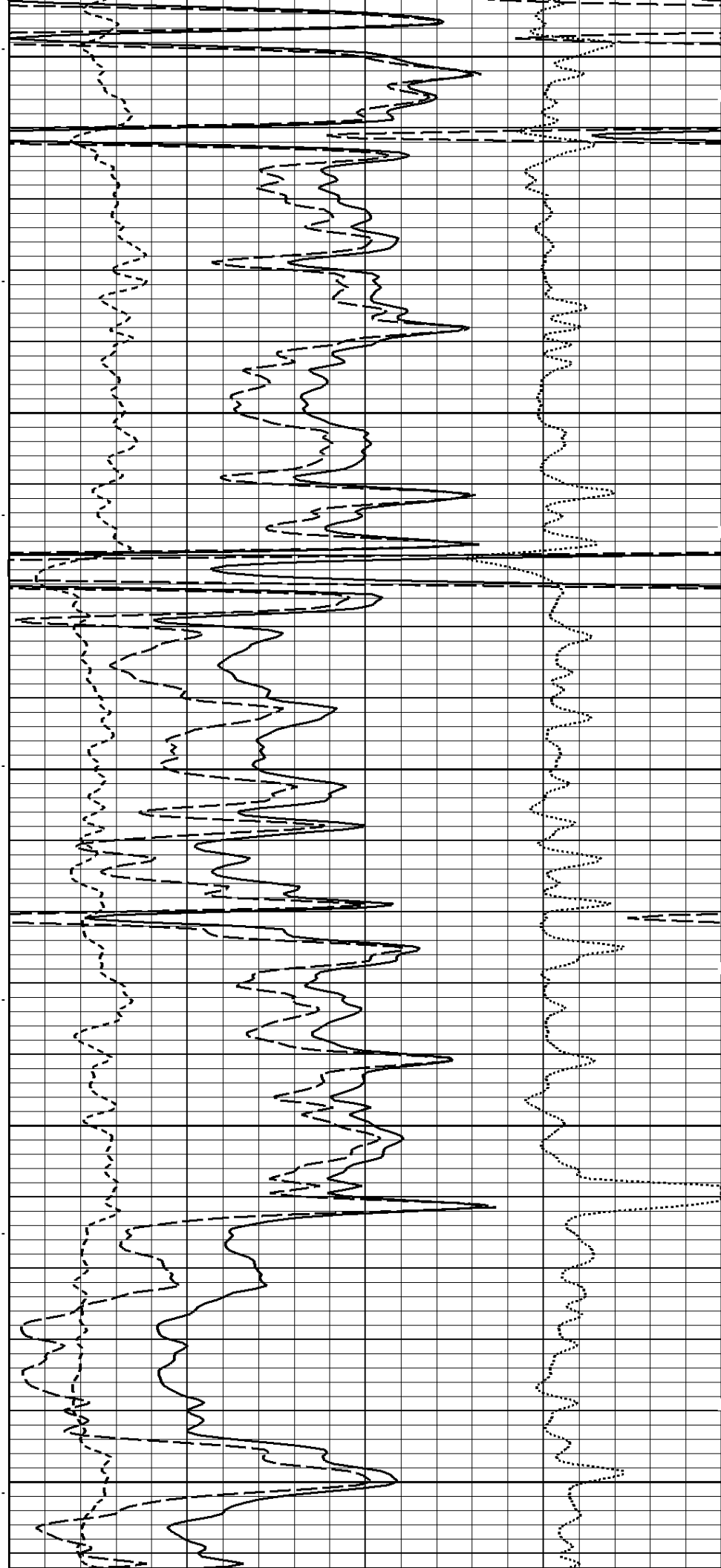


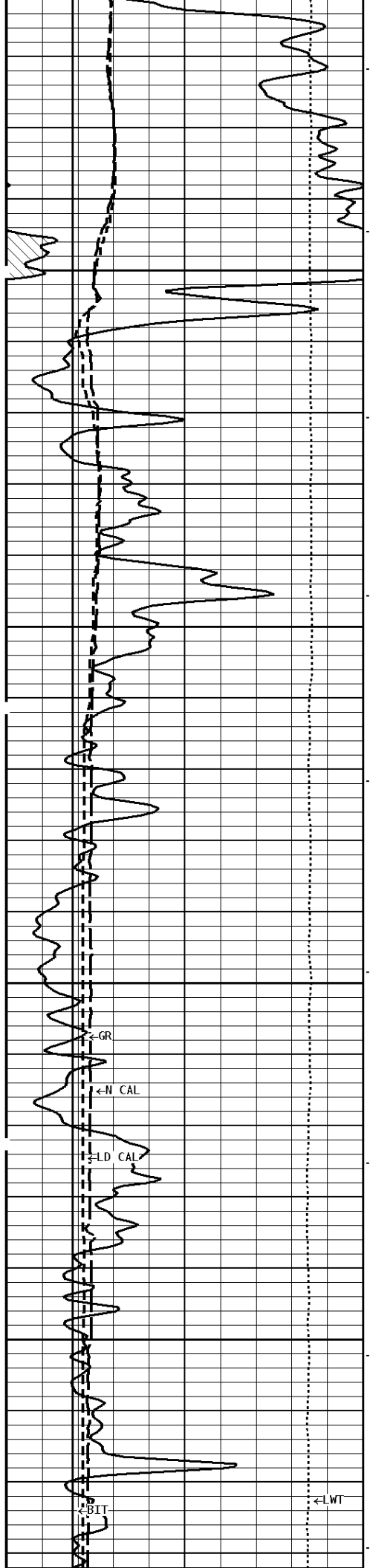
1000

-500Cu.Ft

1100

1200
300Cu.Ft

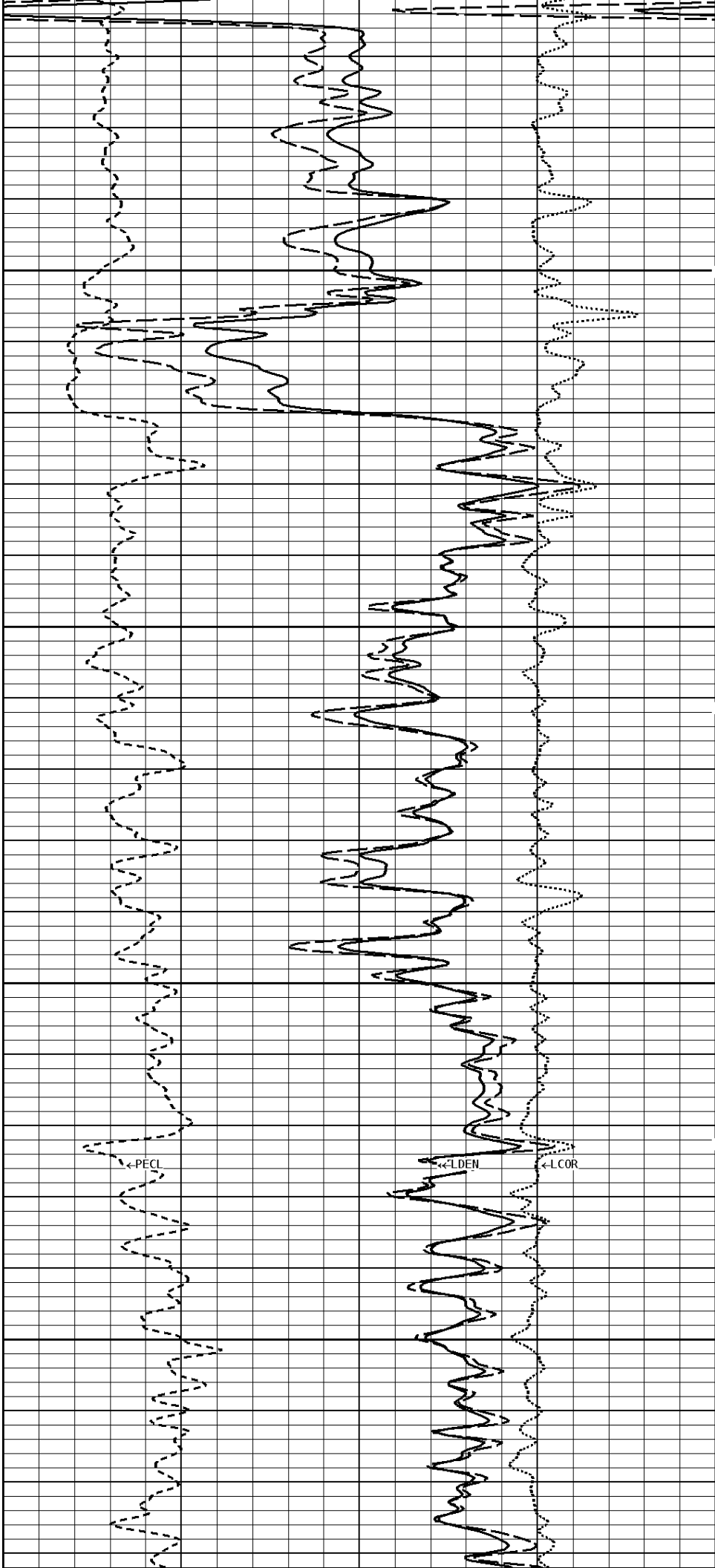




-400Cu.Ft

1300

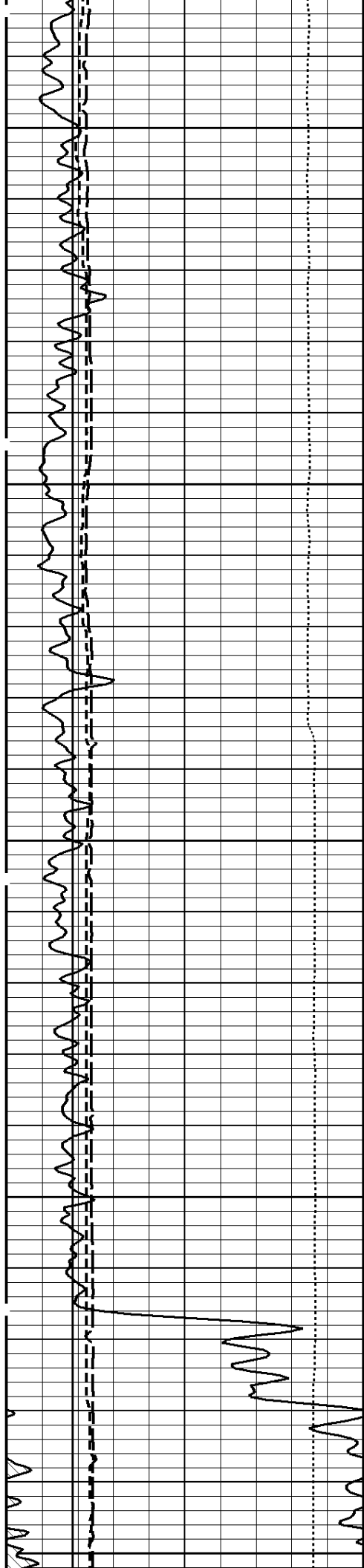
1400



←PECL

←L DEN

←L COR

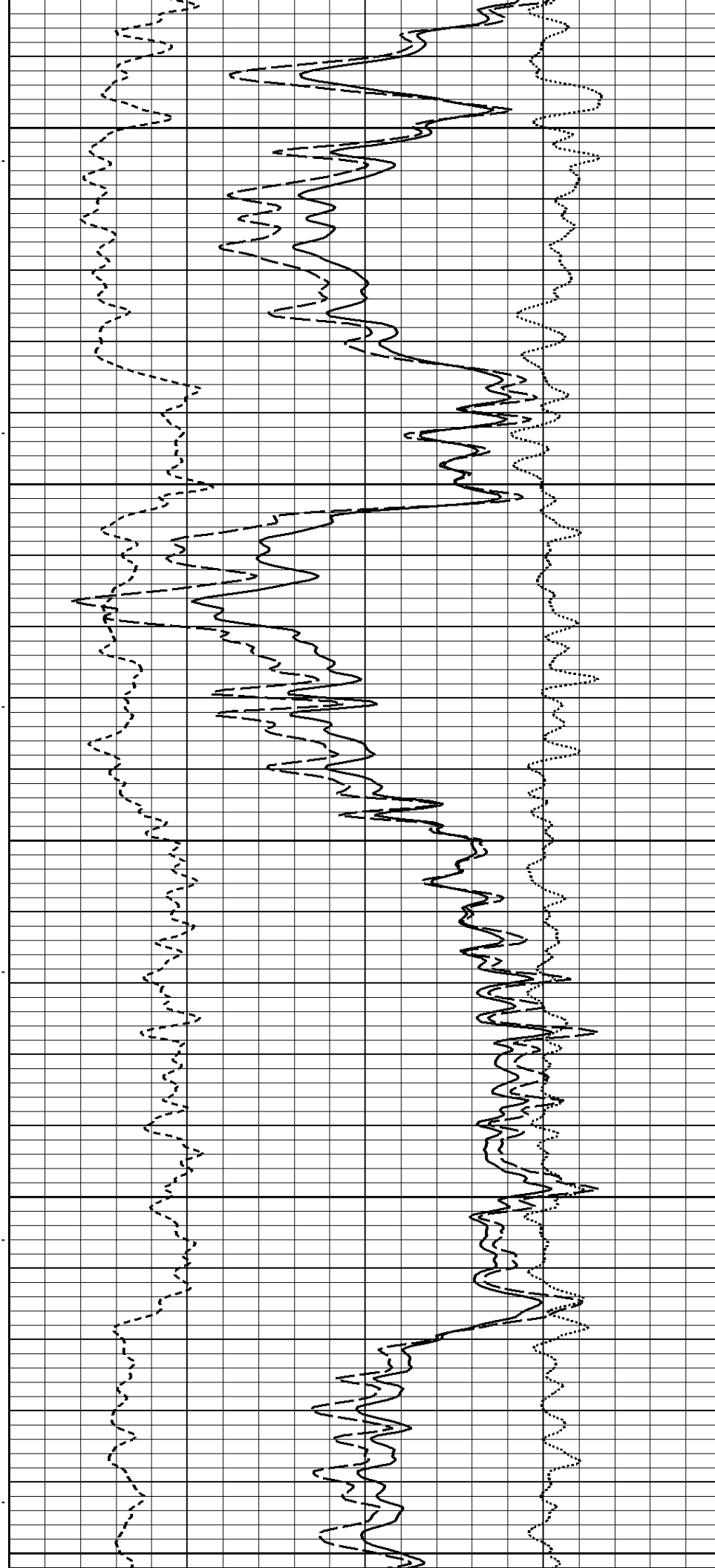


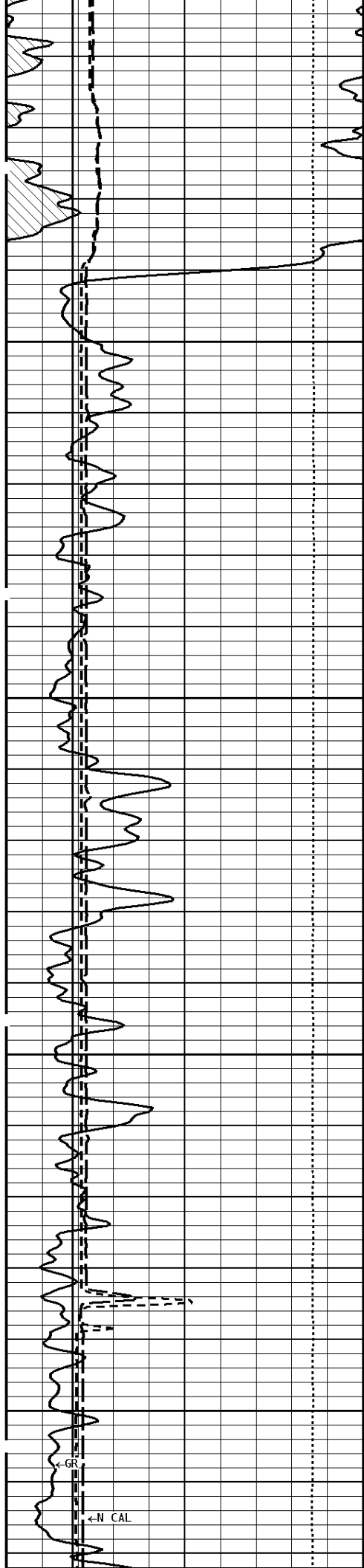
1500

300Cu.Ft

200Cu.Ft

1600

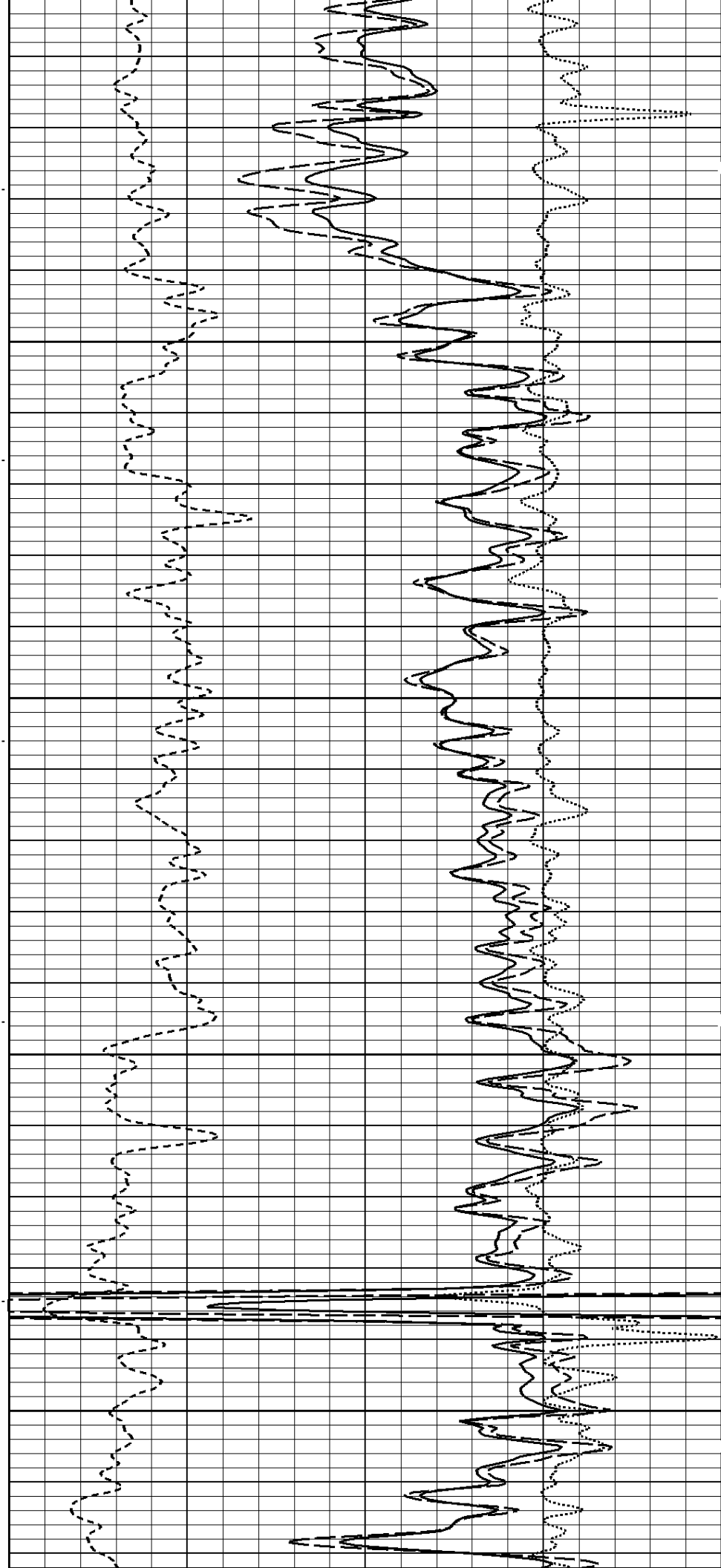


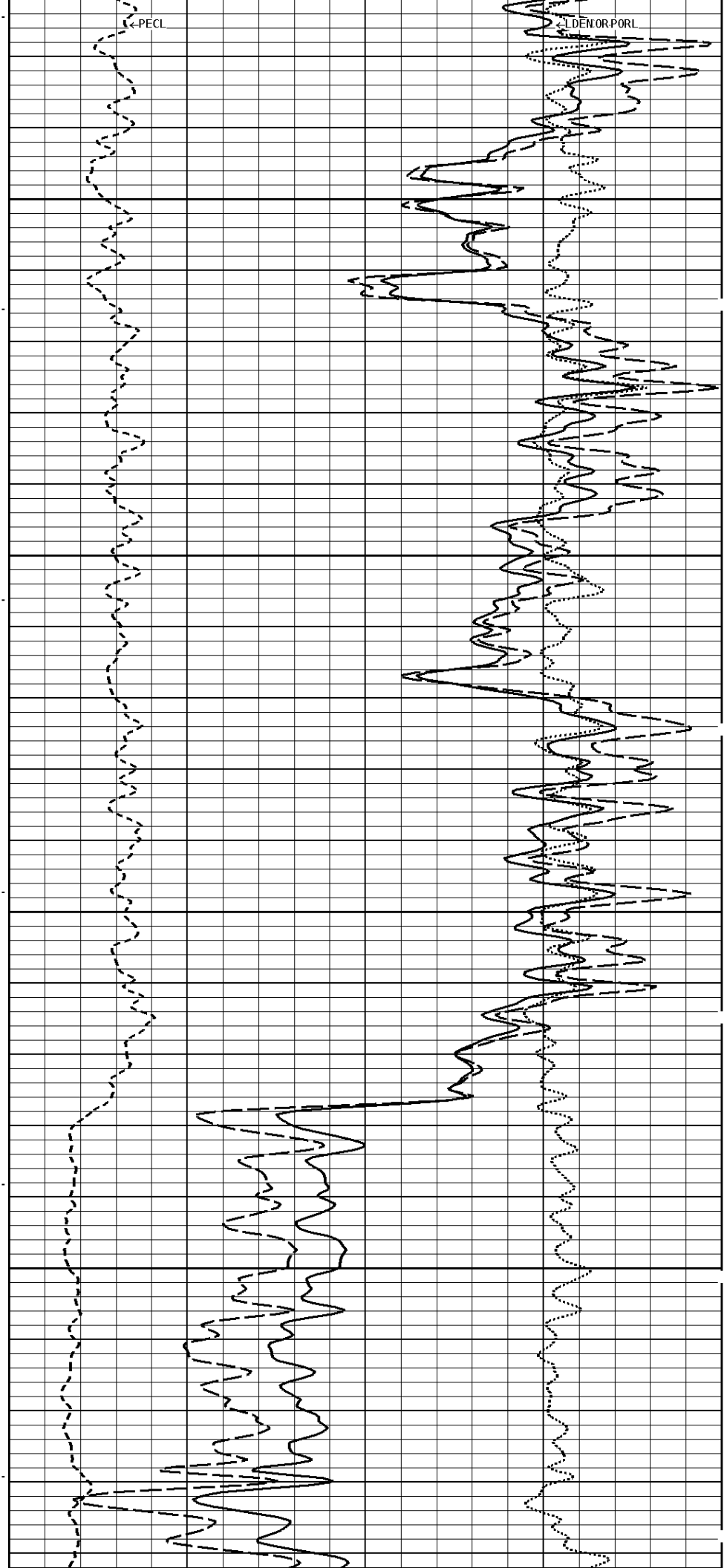
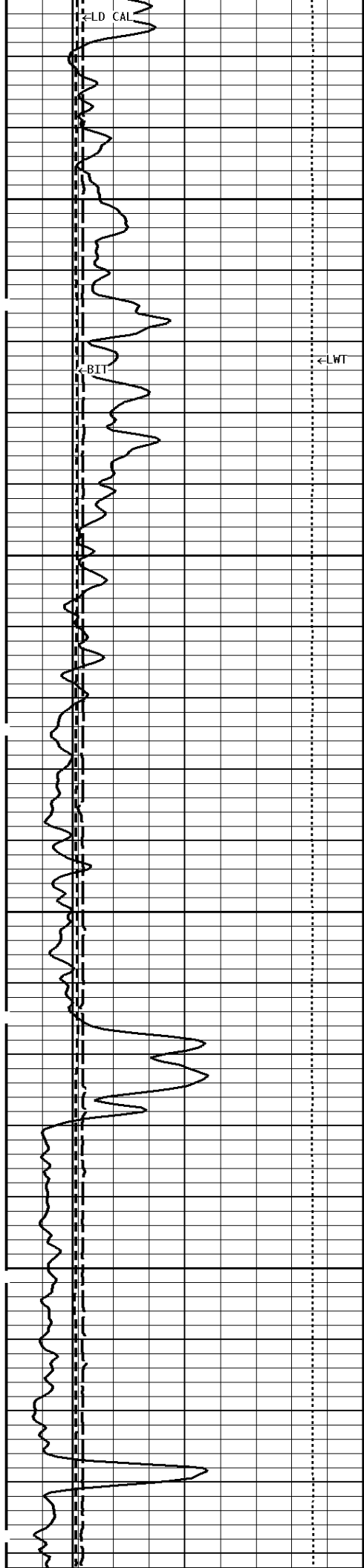


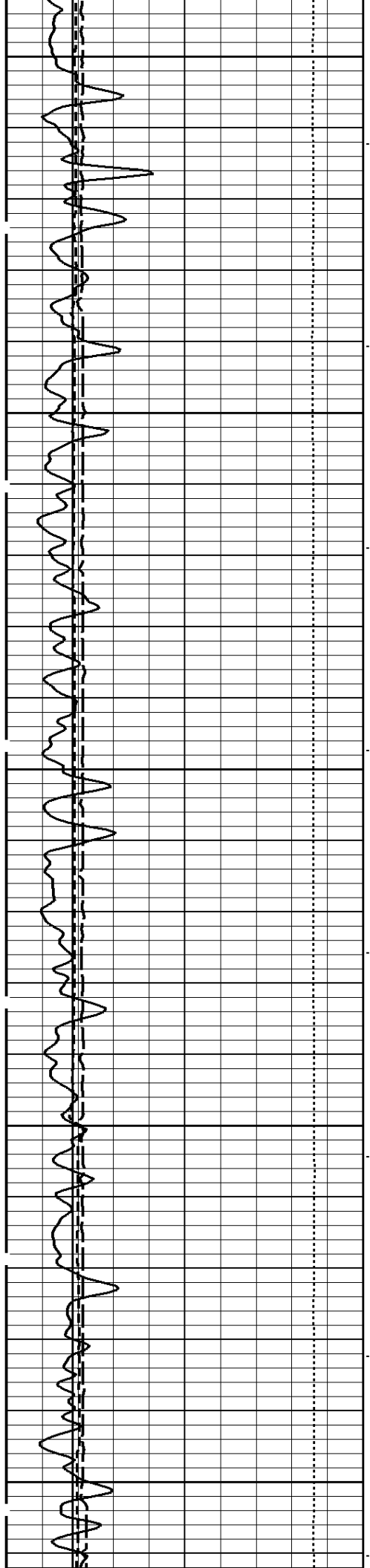
1700

1800

-200Cu.Ft



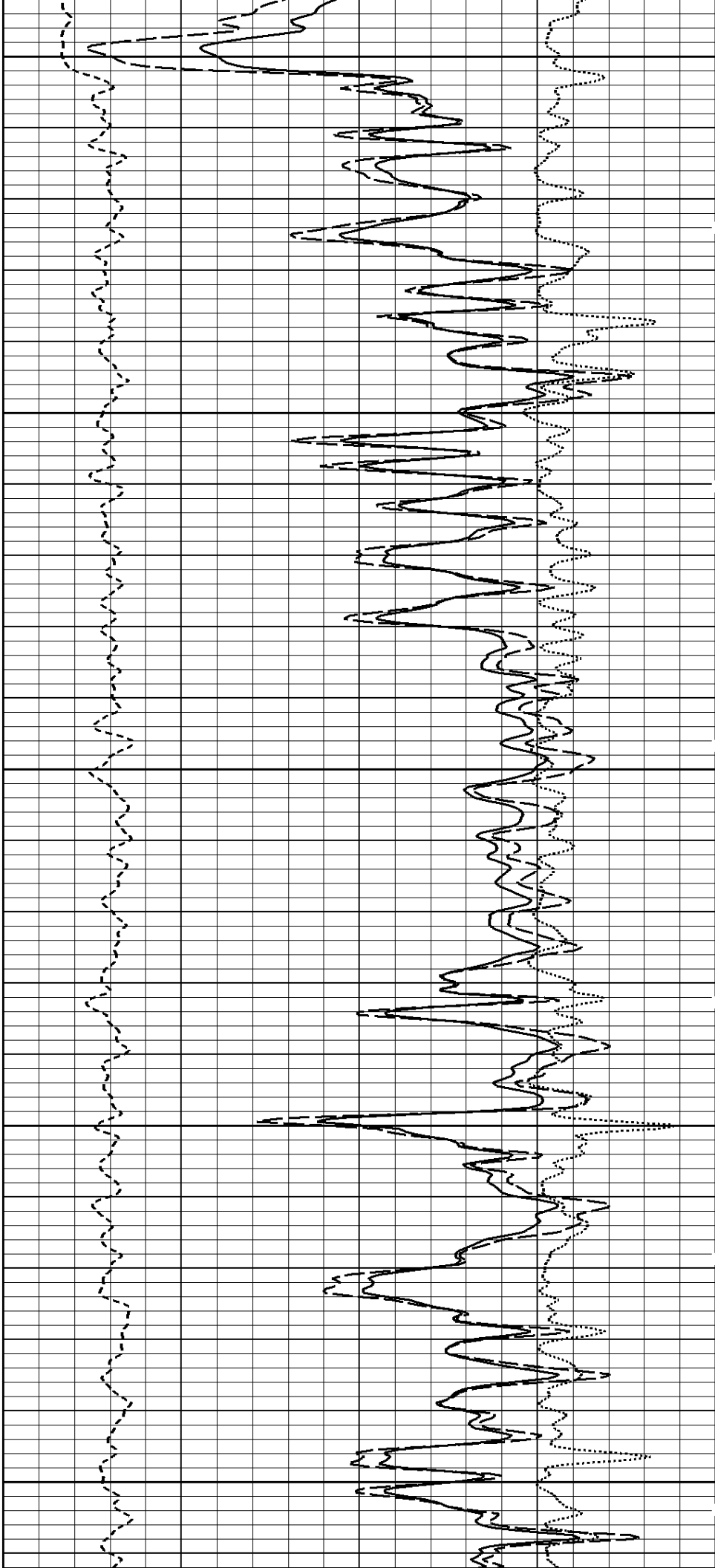


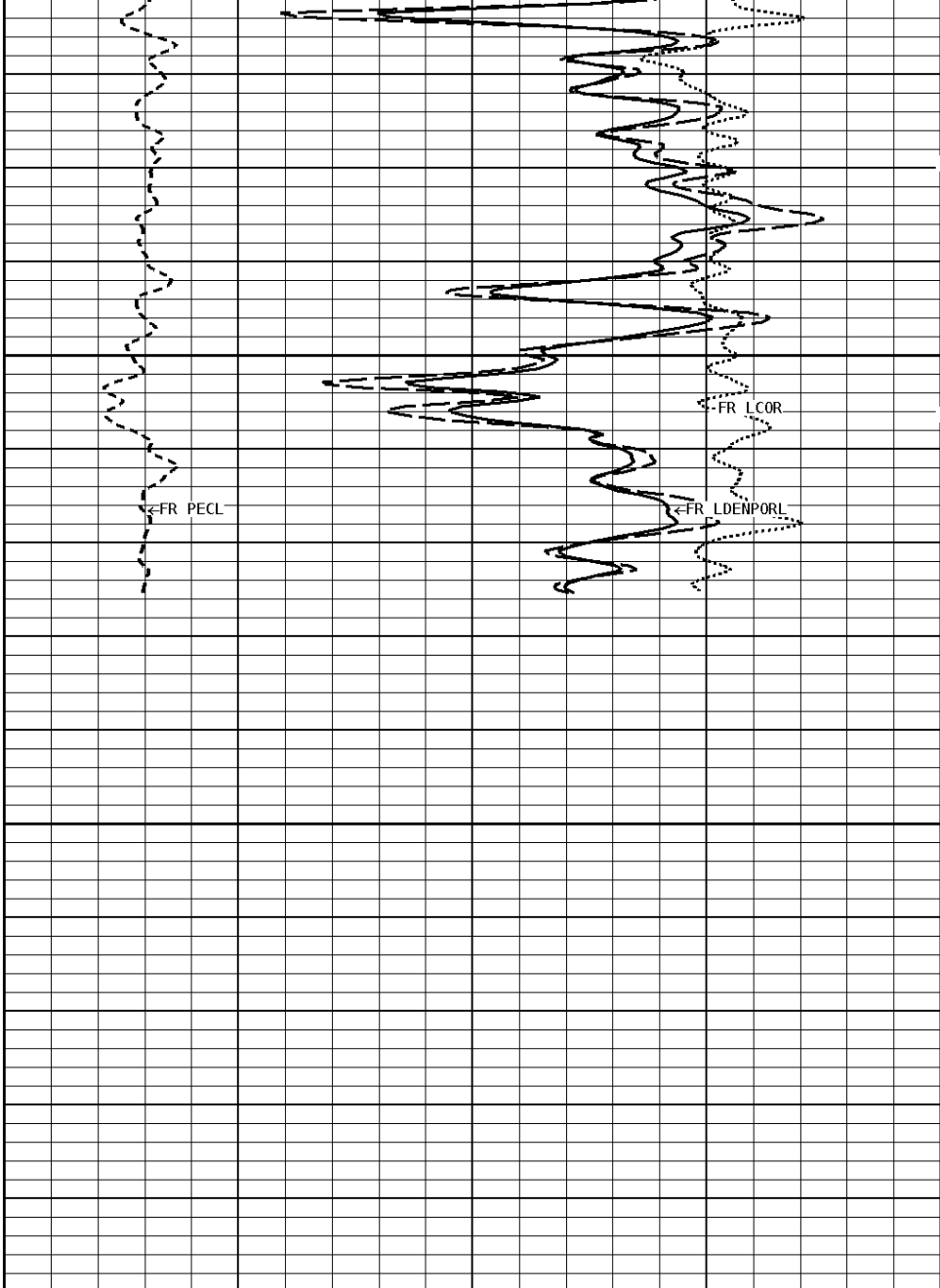
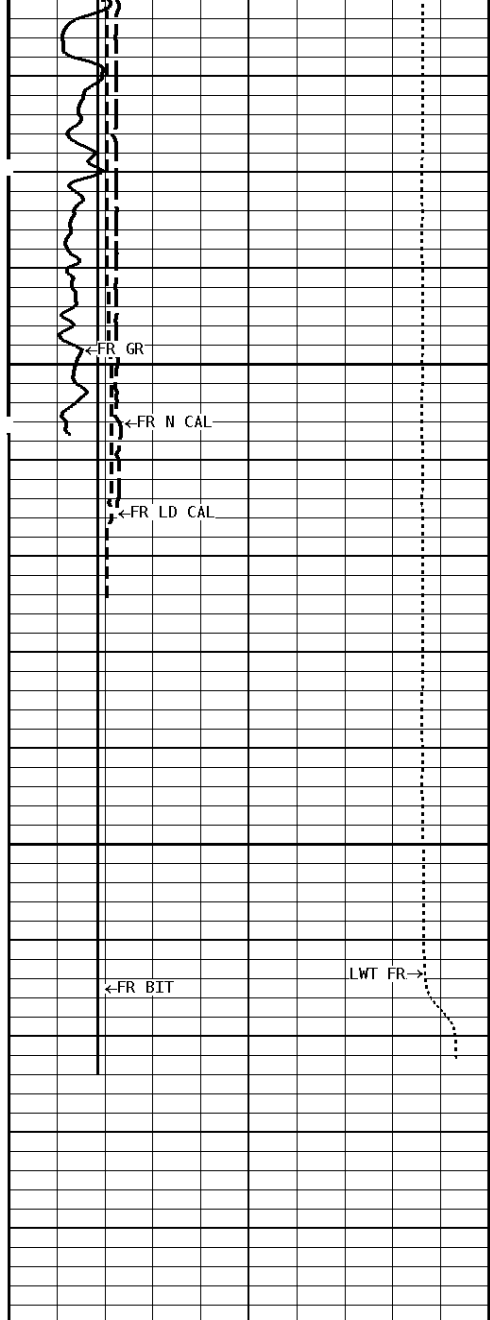


2100

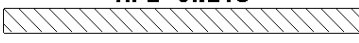
2200

2300





1:240 MAIN SECTION
BULK DENSITY

GAMMA RAY API UNITS 150 0  300 0 150	
TENSION LBS 10000 0	
DENSITY (X) CALIPER INCHES (IN) 16 26 6 16	
NEUTRON (Y) CALIPER INCHES (IN) 16 26 6 16	
BIT SIZE INCHES (IN)	

- BHV AHV - CU. FT	DENSITY POROSITY (2.71g/cc) PERCENT 70 30 -10 -50	
	COMPENSATED BULK DENSITY G/CC 3.0 4.0 2.0 3.0 1.0 2.0	
	PE CROSS-SECTION BARNS/ELECTRON 0 10	DENSITY CORRECTION G/CC -0.25 0.25

* Borehole Zone Factors *

Zone 1 99999.0 to 0.0 Feet		
Matrix Density	_____	2.71 g/cc
Fluid Density	_____	1.00 g/cc
Formation Matrix	_____	Limestone
Drill Bit Size	_____	7.875 in
Casing Diameter	_____	4.500 in
Casing Correction (PHI N)	_____	Disable

* Calibration Summary *

Shop Calibration					
GRT-B					
Performed : 05-Aug-2013		Time : 09:36			
Sensor Suite : GR-GR5		ID : GRT-BB-006			
	Measured	Units	Calibrated	Units	
GR	Background	Jig	Jig		
	60	375	175		GRAPI
		CPS			
Shop Calibration					
CNT-AA					
Performed : 04-AUG-2013		Time : 21:33			
Sensor Suite : CALI-BCN		ID : NDT-AE-403			
	Jig - Measured		Jig - Calibrated	Units	
	Ring#1	Ring#2	Ring#1	Ring#2	
CL # 1	7.7	13.7	6.0	12.0	IN.
Shop Calibration					
LDT-AA					
Performed : 04-Aug-2013		Time : 21:38			
Sensor Suite : BHC NEUT		ID : CNP-AA-103			
Source ID : N-1044					
	Measured	Tank	Verification	Units	
N/F	4.1030	Calibrated	Jig		
Porosity	27.3	3.6893	3.7078		%
		20.5	20.8		
Shop Calibration					
LDT-DA					
Performed : 04-Aug-2013		Time : 21:25			
Sensor Suite : CALI-LTH		ID : NDT-AH-116			
	Jig - Measured		Jig - Calibrated	Units	
	Ring#1	Ring#2	Ring#1	Ring#2	
CL # 1	8.0	11.0	6.0	12.0	IN.
Performed : 04-Aug-2013		Time : 20:12			
Sensor Suite : BHCPENLNG		ID : LDP-DA-47			
Source ID : CSV-587					
Short Space					
	BKGD	Al	Mg	Al+Fe	Units
LSW1	71	397	631	282	CPS
LSW2	77	488	770	365	CPS
LSW3	282	1252	1956	1077	CPS
LSW4	348	1208	1681	1078	CPS
LSW5	33	42	42	39	CPS
LSW6	91	93	91	92	CPS
LSW7	55	61	60	60	CPS
LSW8	2	3	3	3	CPS
QS	0.241	0.208	0.207	0.216	
PES			2.778	5.967	
SSDN		2.600	1.680		G/CC
Long Space					
	BKGD	Al	Mg	Al+Fe	Units
LLW1	102	448	1770	299	CPS
LLW2	114	837	3443	611	CPS
LLW3	444	1841	6717	1610	CPS
LLW4	597	1164	2951	1084	CPS
LLW5	67	70	83	69	CPS
LLW6	188	186	179	185	CPS
LLW7	118	117	117	119	CPS
LLW8	4	5	10	5	CPS
OL	0.230	0.228	0.209	0.219	

PEL	0.250	0.220	0.205	0.215
LSDN	2.600	1.680	5.458	G/CC

**Shop Calibration
MST-DA**

Performed : 30-MAY-2013 Time : 14:43
 Sensor Suite : CALI-MSN ID : MST-DA-36

CL # 1	Jig - Measured		Jig - Calibrated		Units
	Ring#1	Ring#2	Ring#1	Ring#2	
	6.8	12.8	6.0	12.0	IN.

Performed : 30-MAY-2013 Time : 14:44
 Sensor Suite : MSTDA-NI ID : MST-DA-36

	Zero	Measured		Units	Calibrated		Units
		Reference			Zero	Reference	
INV-V	221.0	21282.7			0.00	1946.00	MV
NOR-V	164.0	21140.6			0.00	1546.00	MV
IN-C	157.3	21367.2			0.00	15.46	UA

INV-R					40.71		OHMM
NOR-R					55.11		OHMM

Performed : 30-MAY-2013 Time : 14:44
 Sensor Suite : MSTDAMSF ID : MST-DA-36

	Zero	Measured		Units	Calibrated		Units
		Reference			Zero	Reference	
MSFC	150.0	58600.0			0.00	1522.00	UA
MSFB	32800.0	62500.0			0.00	1522.00	MA
MOM1	150.0	5950.0			0.00	1522.00	MV

MSFRA					43.30		OHMM
-------	--	--	--	--	-------	--	------



Company: RUNNING FOXES PETROLEUM INC.
 Well: C HEIM #2-19D
 Location: 990' FNL & 1650' FEL
 Logged: 08-24-2013
 K.B. Elev: 870.0 Ft