

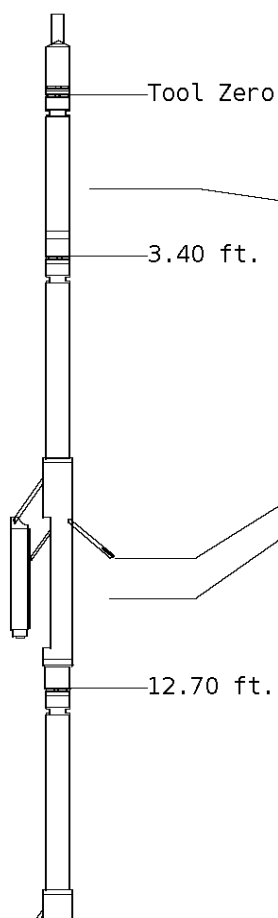
ALL PRESENTATIONS AS PER CUSTOMER REQUEST
 GRT, CNT, LDT, MLT, CST AND PIT RUN IN COMBINATION.
 CALIPERS ORIENTED ON X-Y AXIS.
 2.71 G/CC USED TO CALCULATED POROSITY.
 ANNULAR HOLE VOLUME CALCULATED USING 5.500" PRODUCTION CASING.
 PHIN IS CALIPER CORRECTED

GRT: GRP.
 CNT: PHIN, CLCNIN.
 LDT: PORL,LCORN,PECLN,LDENN,PORLLS,CLLDIN.
 MLT: NOR_RF, INV_RF, MSCLPIN.
 CST: PORS, CDTF, TT1PF, TT2PF, TT3PF, TT4PF, ITT.
 PIT: ILD, ILM, SPU, SFLAEC, CIRD

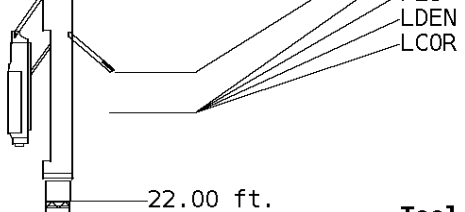
OPERATORS:
 P.JACOBS
 A. DJAHO

Tool String Schematic

Total Tool Length - 66.95 ft.
Maximum Outside diameter - 6.00 in.
Net Weight in Air - 1171.00 lbs.



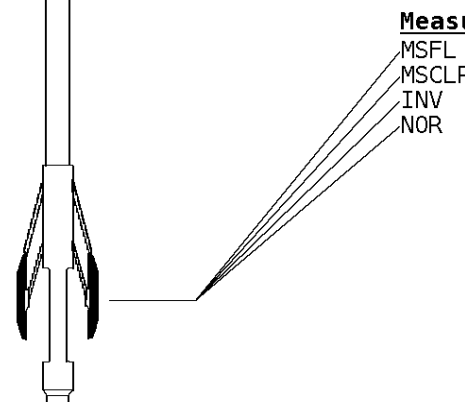
| | | | | | |
|------------------------------------|--------------------|---------------------|----------------------|-------------|----------|
| Tool: GRT-B | | Length: | 3.40 ft. | O.D. | 3.60 in. |
| Gamma Ray Controller | | | | | |
| Sonde ID | | :GRT-BB-006 | | | |
| Measure Point | Tool Offset | Stack Offset | Bottom Offset | | |
| GRP | 2.00 | 2.00 | 64.95 | | |
| Tool: CNT-AA | | Length: | 9.30 ft. | O.D. | 4.36 in. |
| Compensated Neutron A Pad on NDT-A | | | | | |
| Sonde ID | | :NDT-AE-403 | | | |
| Source ID | | :N-1044 | | | |
| Pad ID | | :CNP-AA-103 | | | |
| Measure Point | Tool Offset | Stack Offset | Bottom Offset | | |
| CLCN | 6.00 | 9.40 | 57.55 | | |
| PHIN | 6.80 | 10.20 | 56.75 | | |
| Tool: LDT-DA | | Length: | 9.30 ft. | O.D. | 4.80 in. |
| Litho Density D Pad on NDT-A | | | | | |
| Sonde ID | | :NDT-AH-116 | | | |
| Source ID | | :CSV-587 | | | |
| Pad ID | | :LDP-DA-47 | | | |
| Measure Point | Tool Offset | Stack Offset | Bottom Offset | | |
| CLLD | 6.00 | 18.70 | 48.25 | | |
| PEL | 7.00 | 19.70 | 47.25 | | |
| PES | 7.40 | 20.10 | 46.85 | | |



7.20 19.90 47.05
 7.20 19.90 47.05

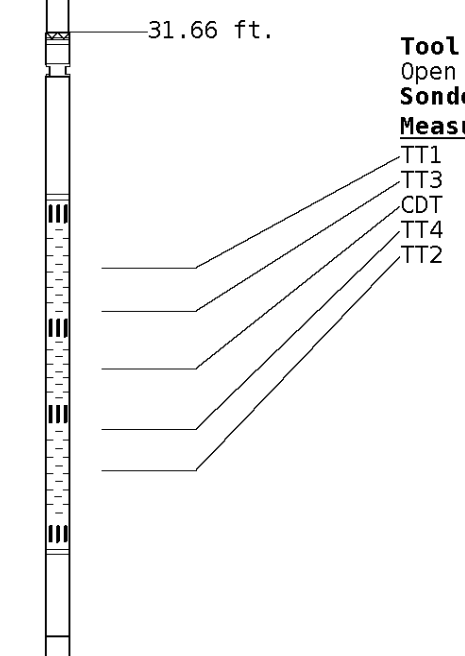
Tool: MST-DA **Length:** 9.66 ft. **O.D.** 6.00 in.
 Micro Spherically Focused (IC)
Sonde ID :MST-DA-36

| Measure Point | Tool Offset | Stack Offset | Bottom Offset |
|---------------|-------------|--------------|---------------|
| MSFL | 7.60 | 29.60 | 37.35 |
| MSCLP | 7.60 | 29.60 | 37.35 |
| INV | 7.60 | 29.60 | 37.35 |
| NOR | 7.60 | 29.60 | 37.35 |



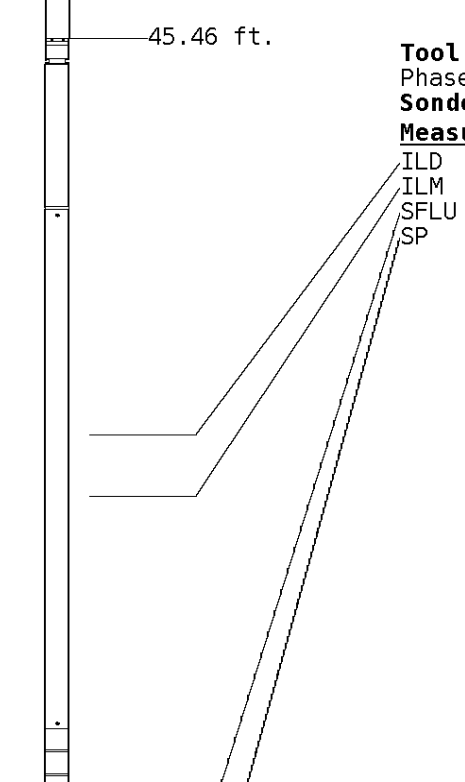
Tool: CST-AD **Length:** 13.80 ft. **O.D.** 3.60 in.
 Open Hole Sonic
Sonde ID :CST-AB-012

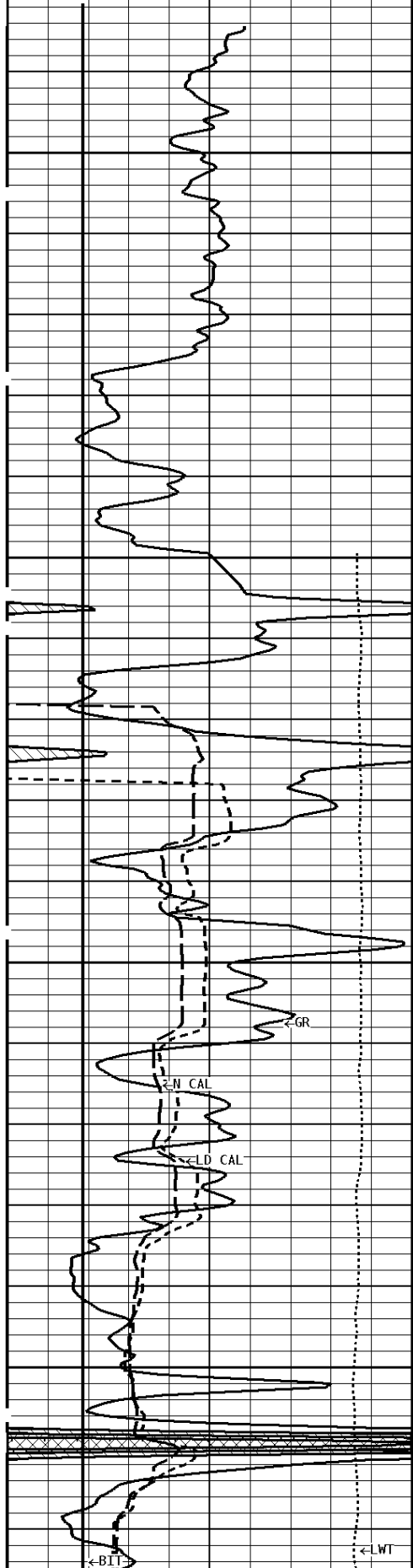
| Measure Point | Tool Offset | Stack Offset | Bottom Offset |
|---------------|-------------|--------------|---------------|
| TT1 | 4.80 | 36.46 | 30.49 |
| TT3 | 5.80 | 37.46 | 29.49 |
| CDT | 7.30 | 38.96 | 27.99 |
| TT4 | 8.80 | 40.46 | 26.49 |
| TT2 | 9.80 | 41.46 | 25.49 |



Tool: PIT-CA **Length:** 21.49 ft. **O.D.** 3.62 in.
 Phased Dual Induction w/ RM & D
Sonde ID :PIT-AB-18

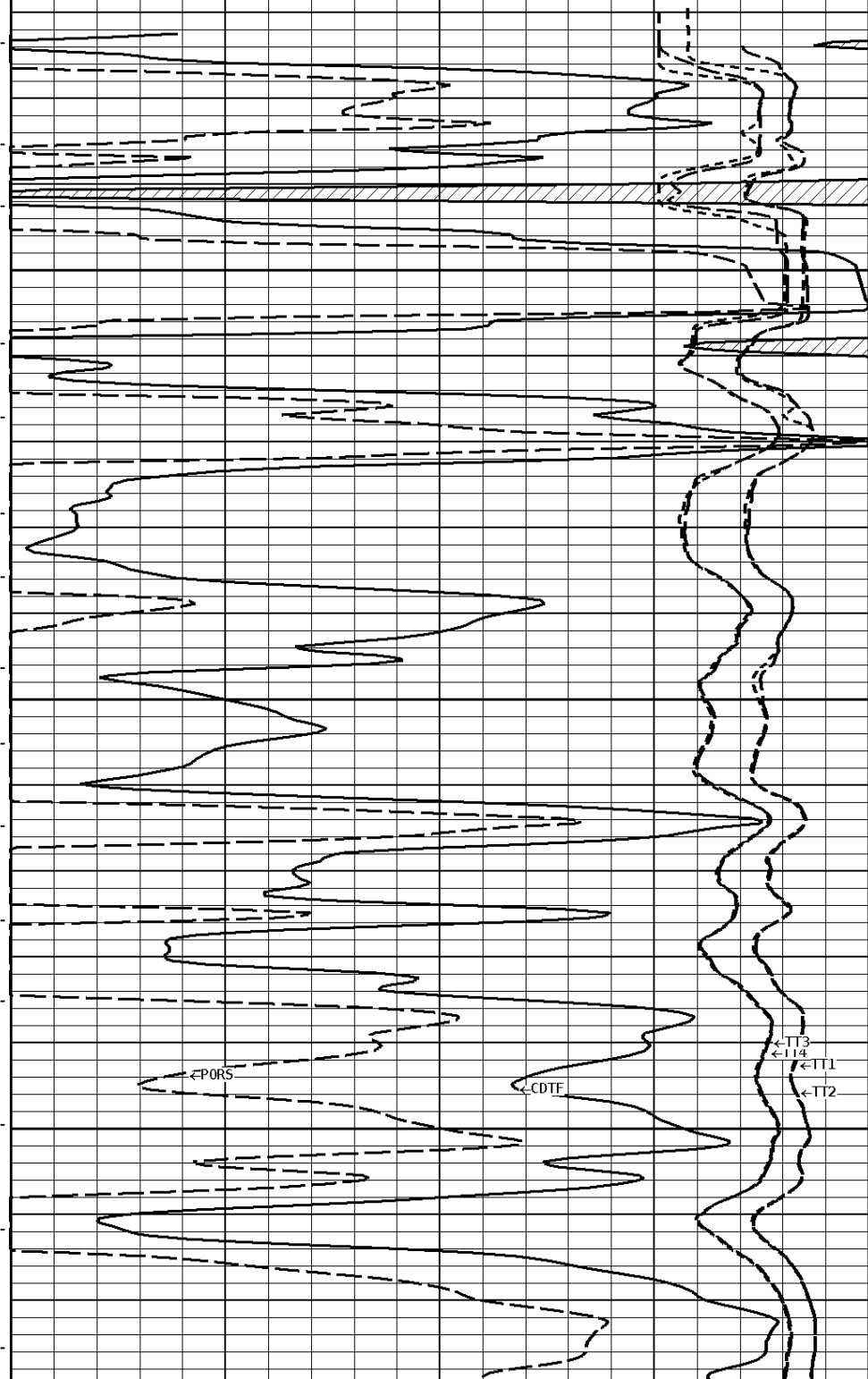
| Measure Point | Tool Offset | Stack Offset | Bottom Offset |
|---------------|-------------|--------------|---------------|
| ILD | 8.92 | 54.38 | 12.56 |
| ILM | 10.10 | 55.56 | 11.39 |
| SFLU | 17.49 | 62.95 | 4.00 |
| SP | 20.60 | 66.06 | 0.88 |

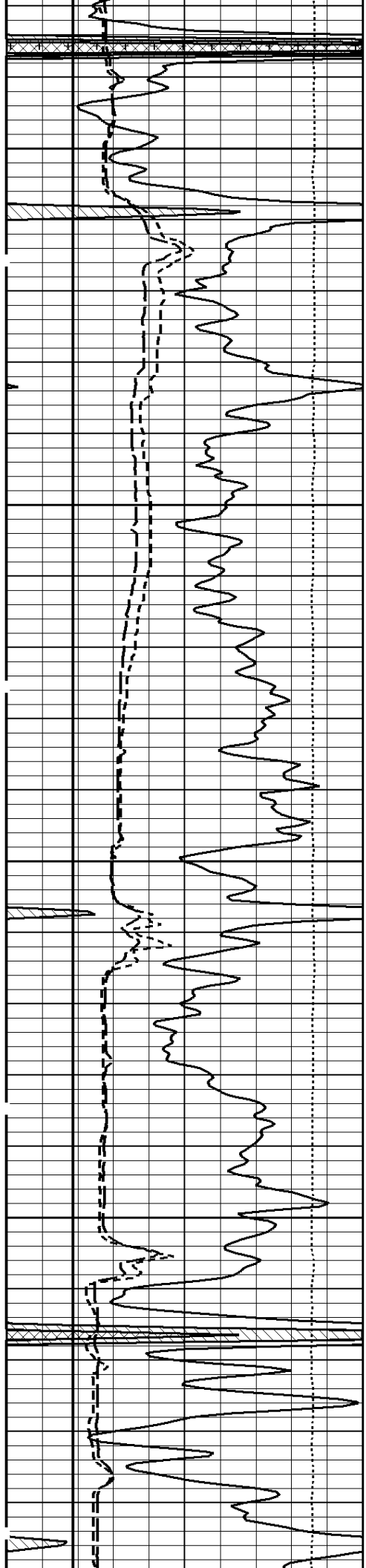




300

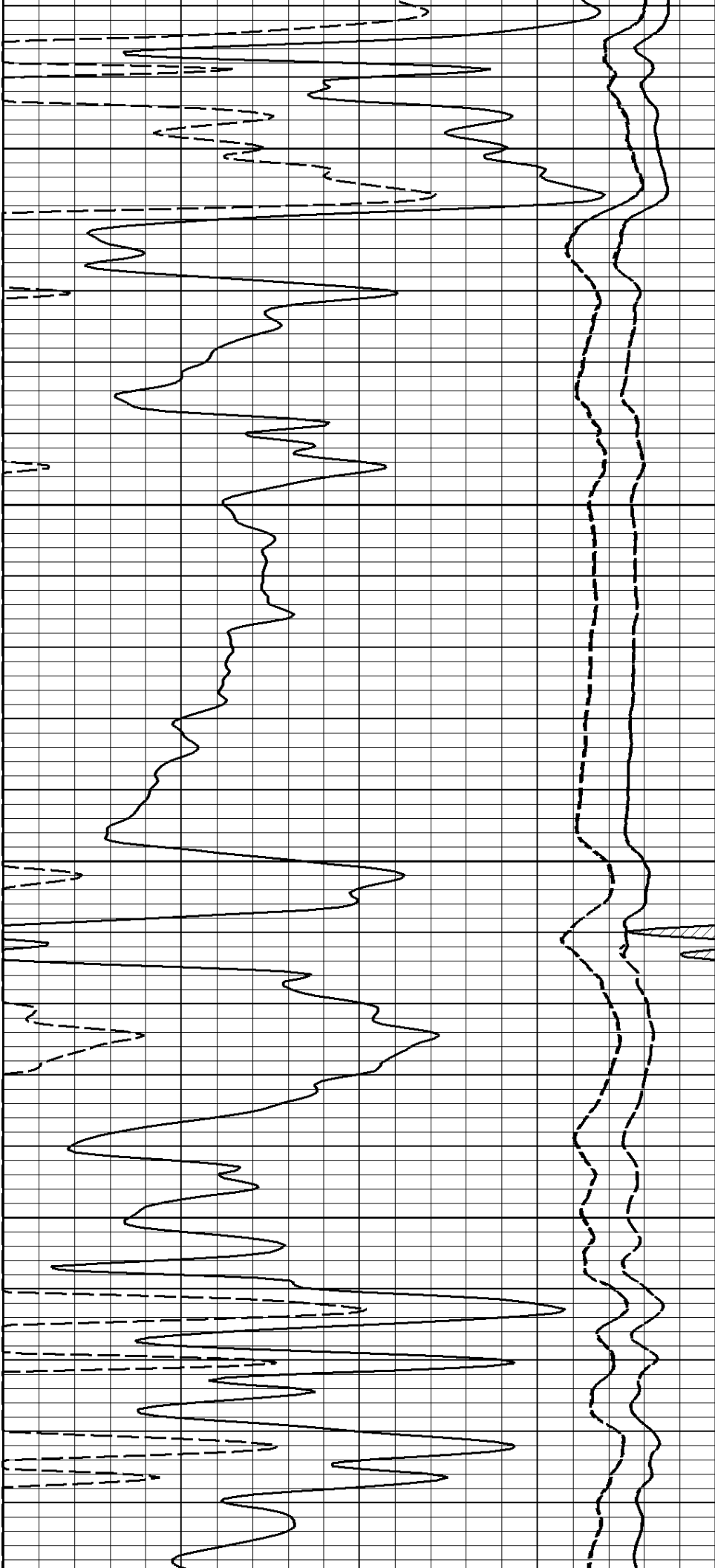
400

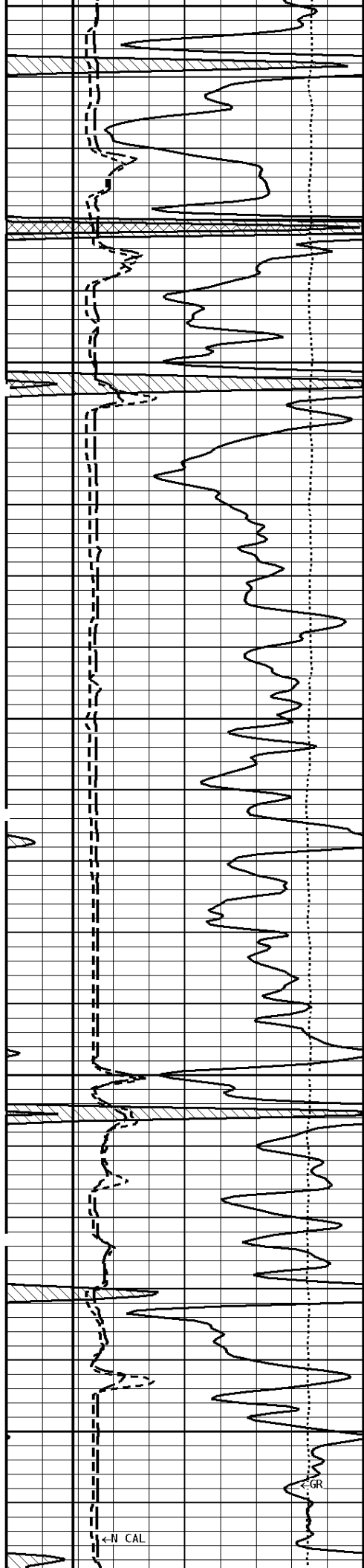




500

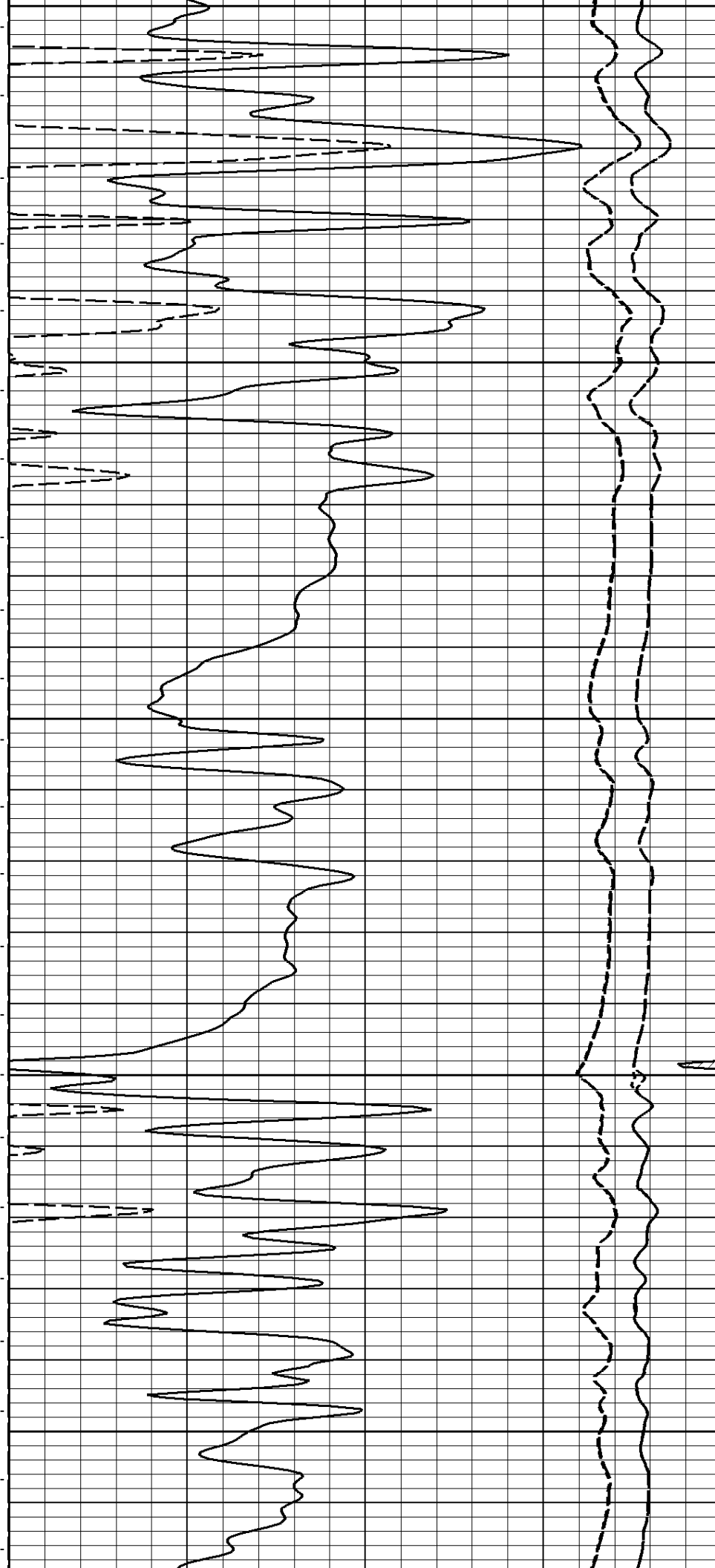
600

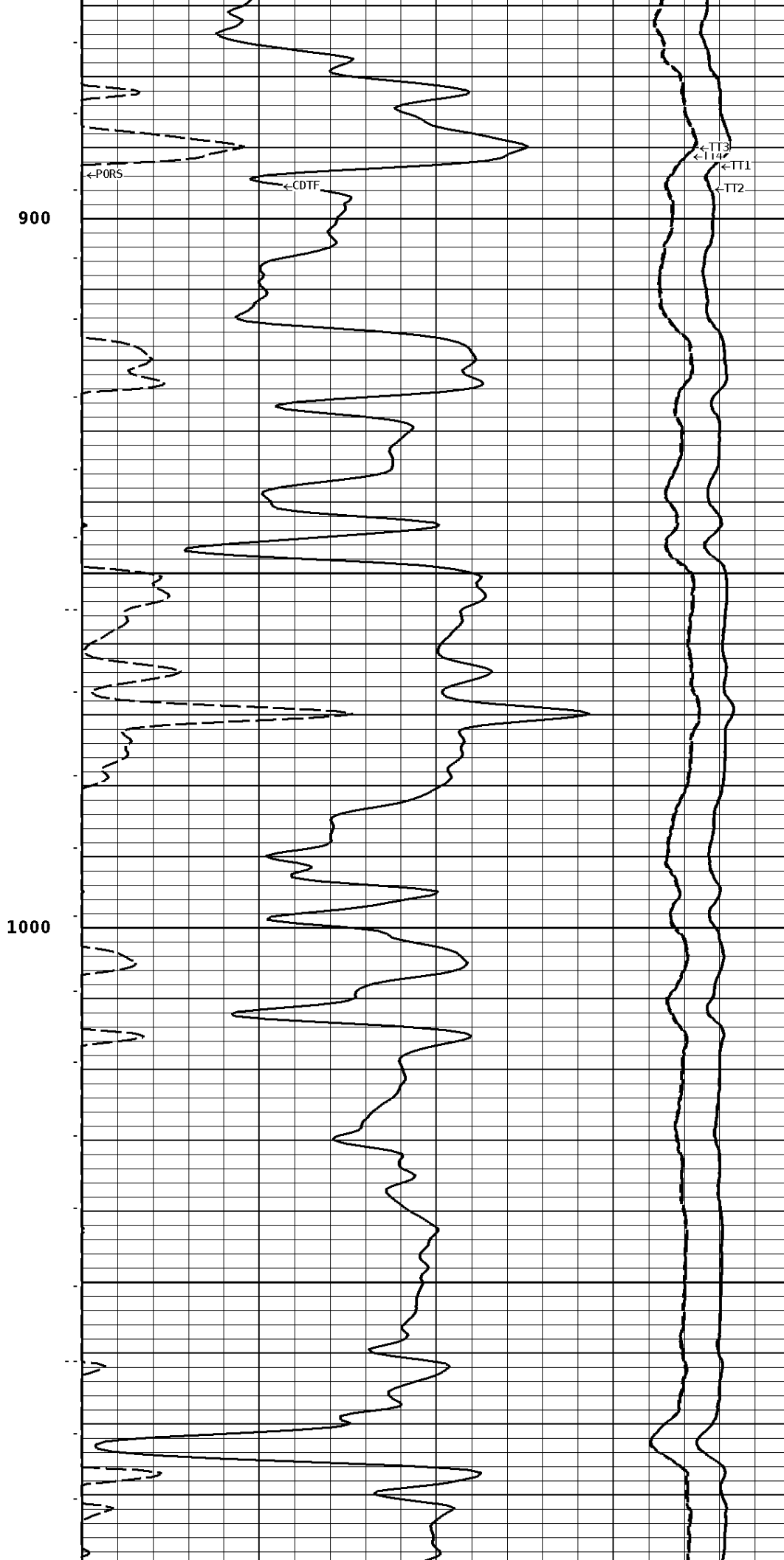
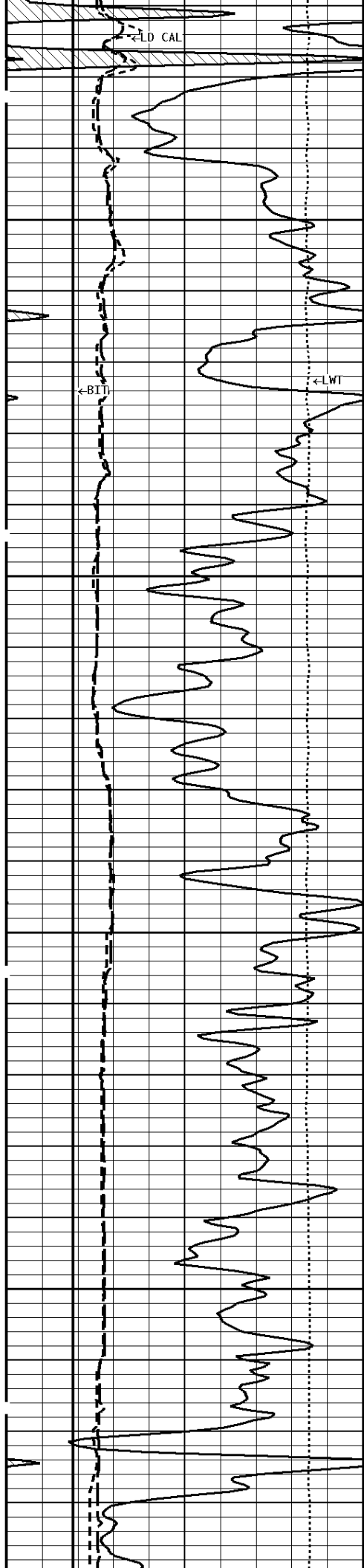


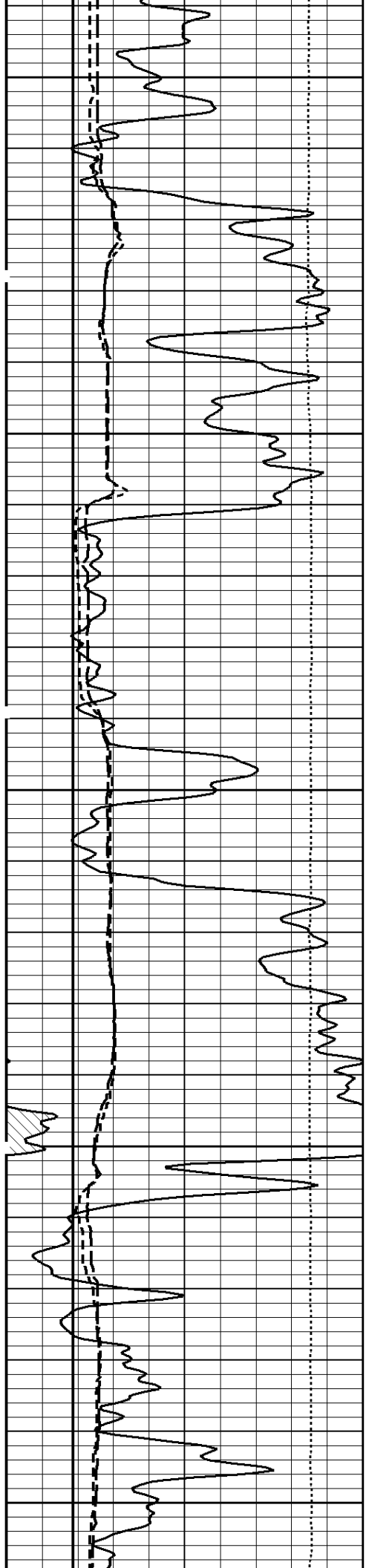


700

800



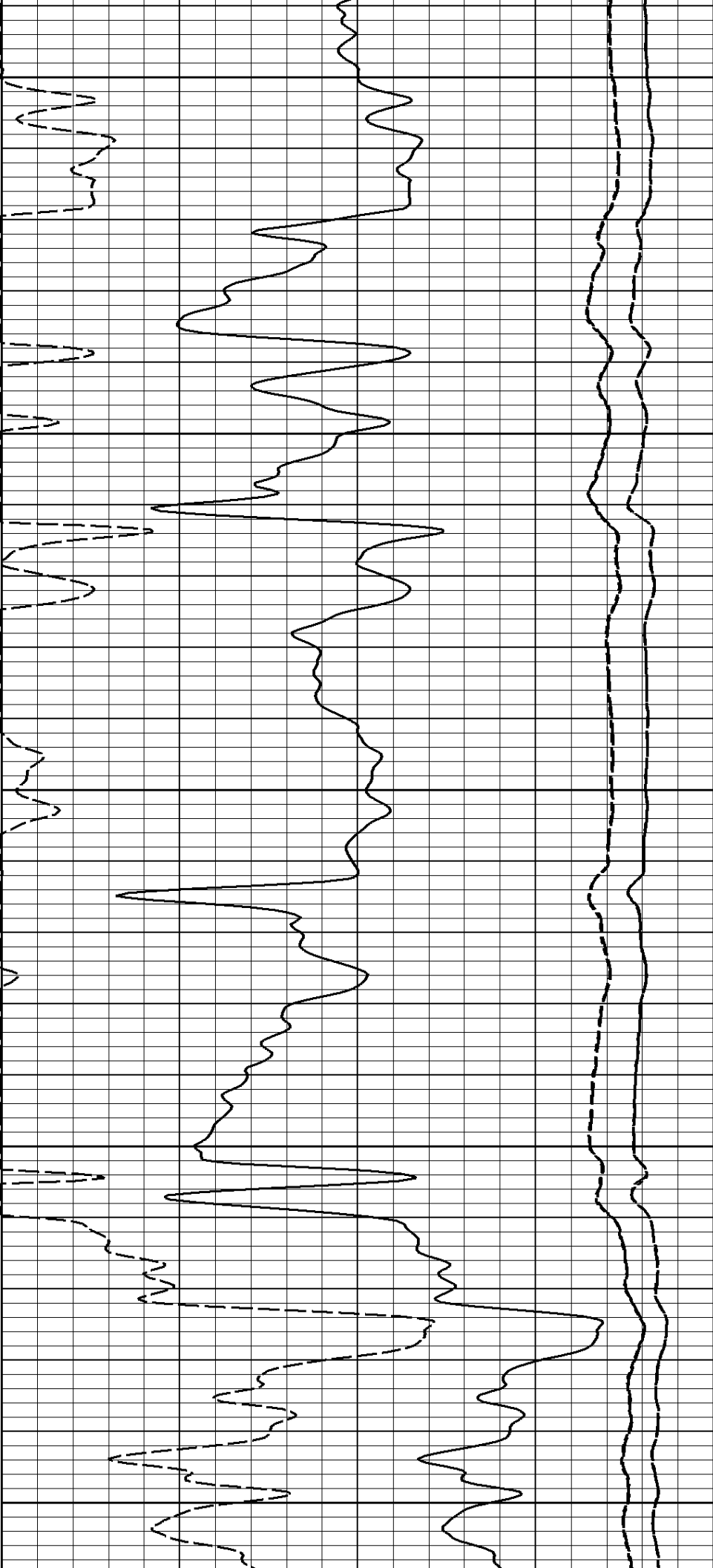


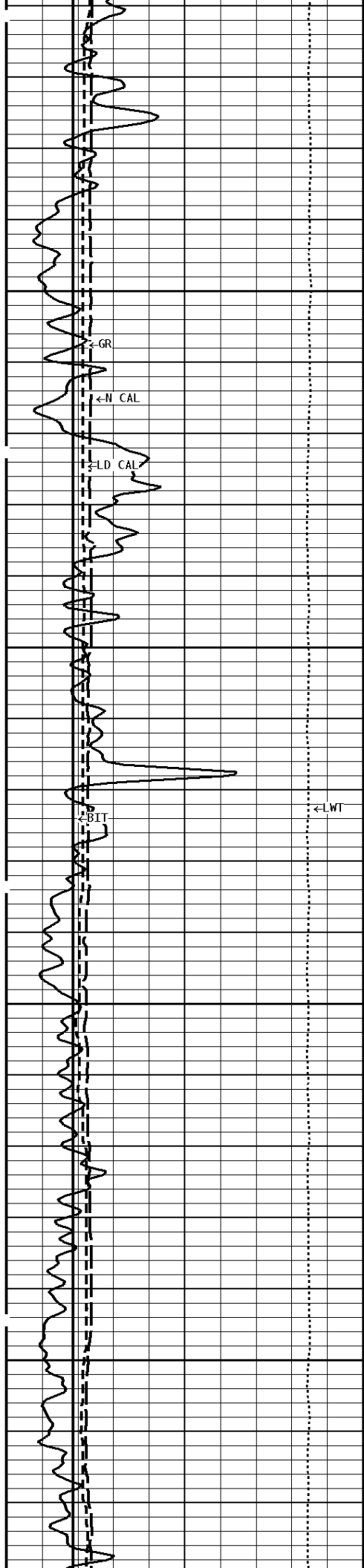


1100

1200

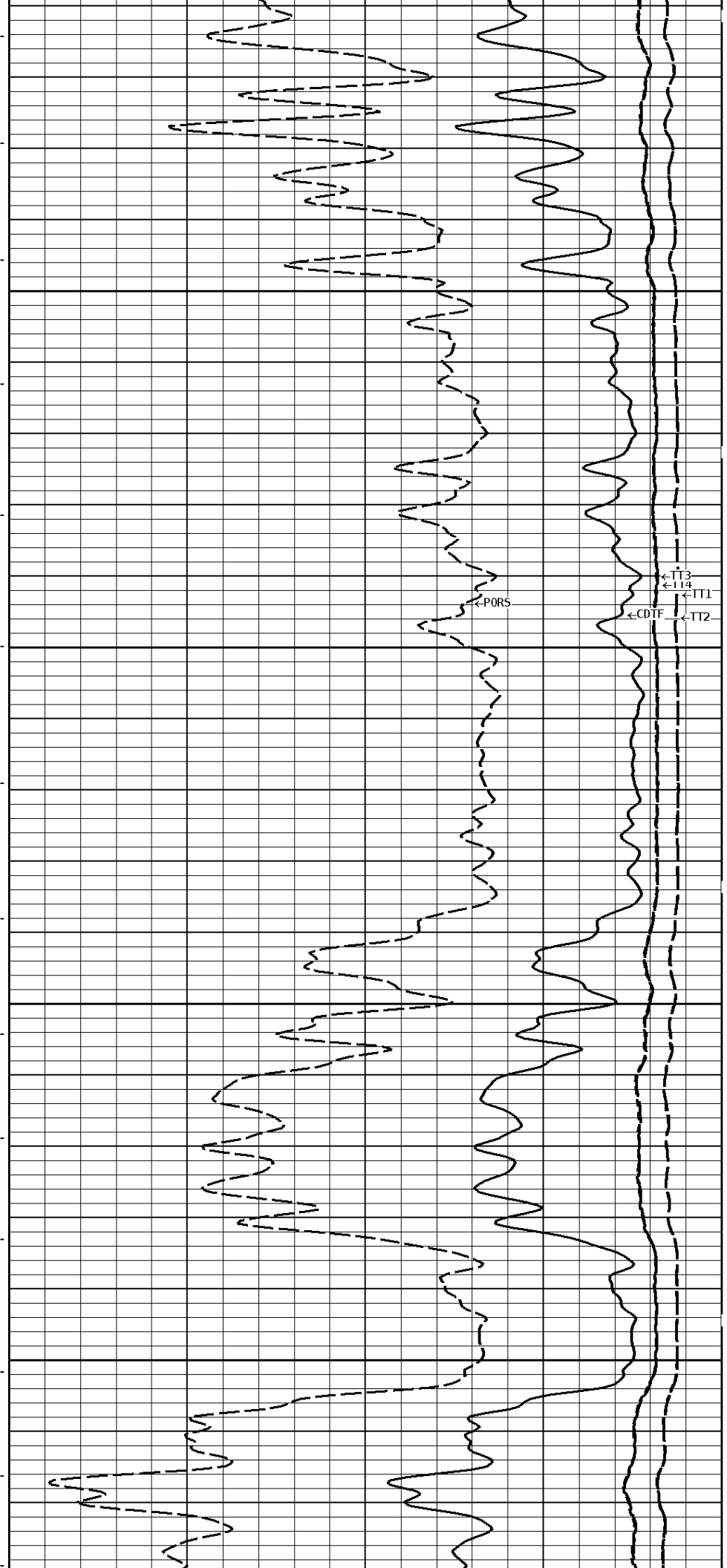
1300





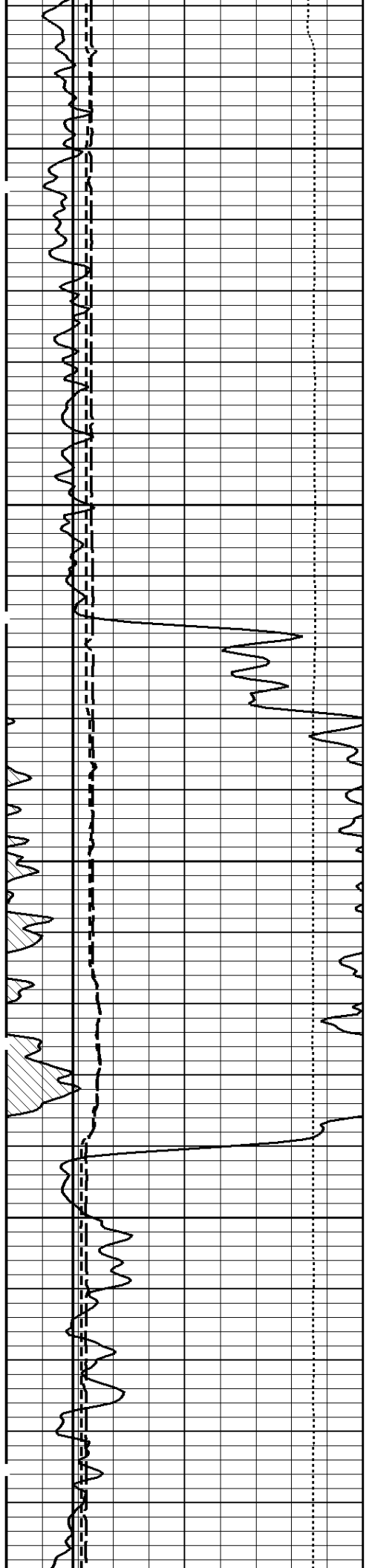
1400

1500



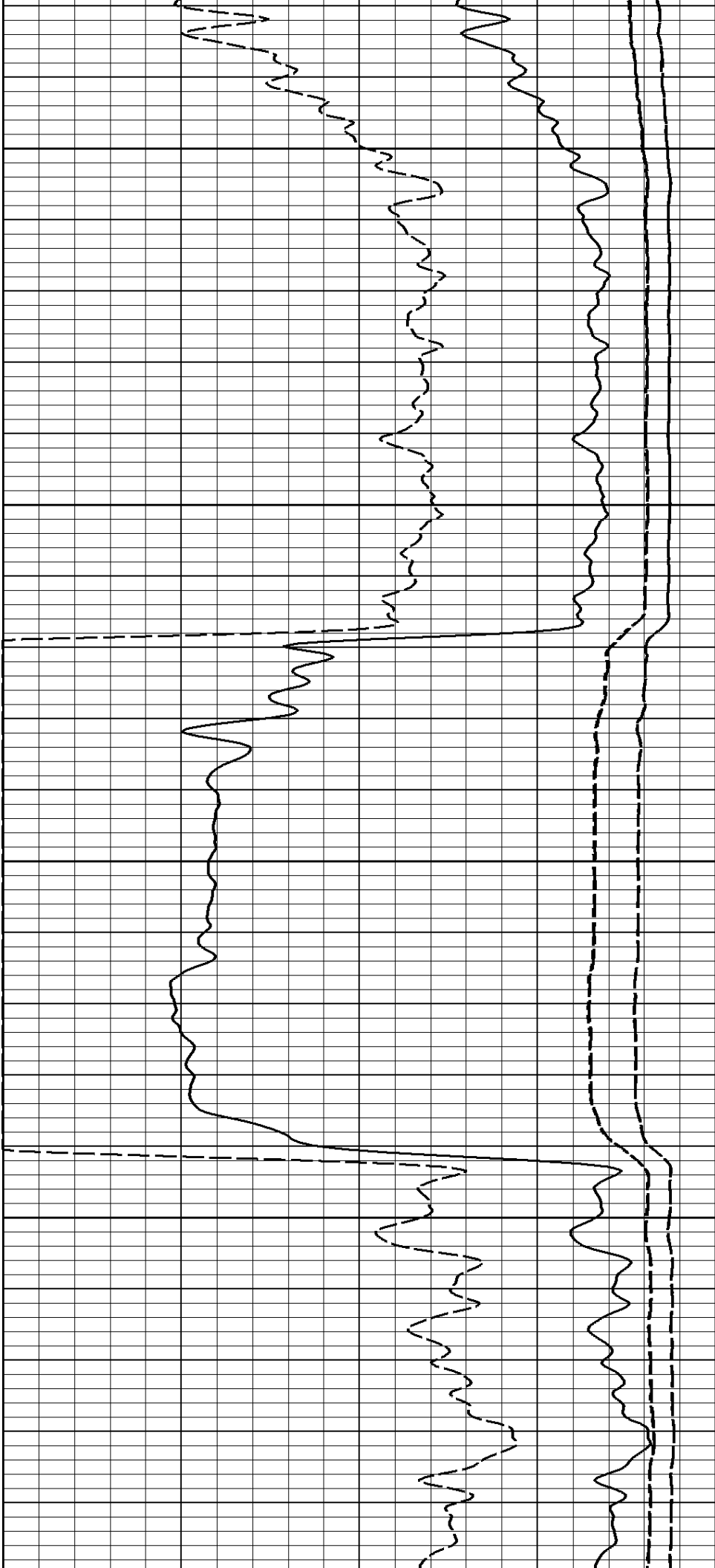
TT3
TT1
TT2

PORS
CDTF



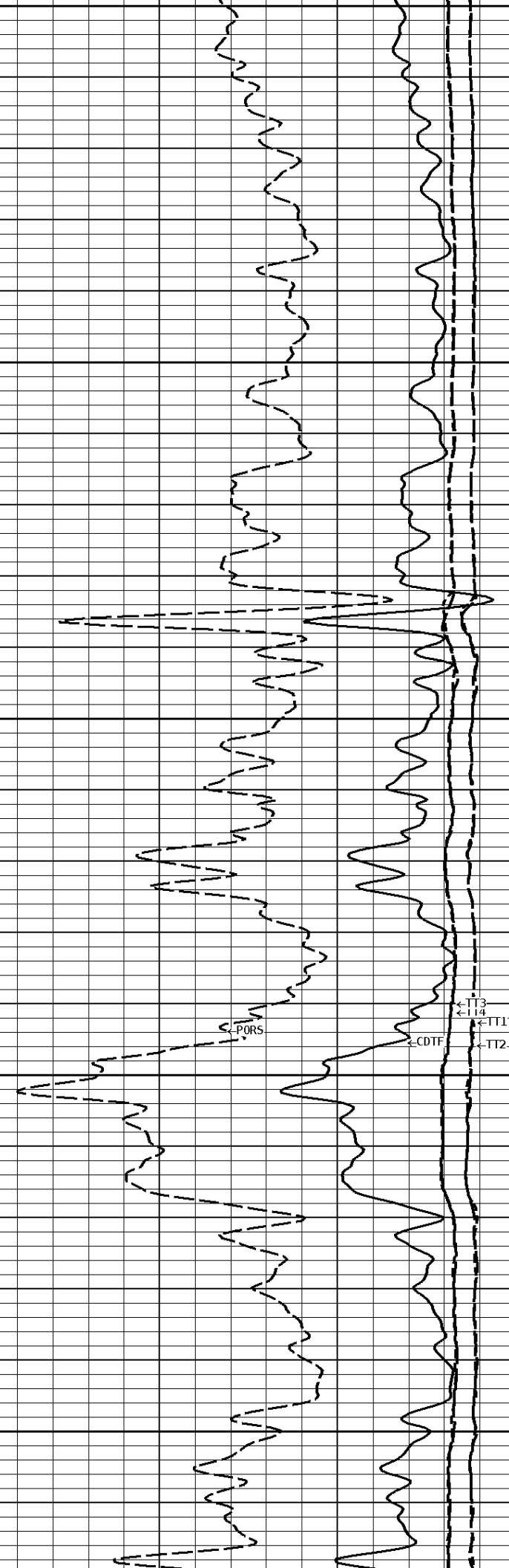
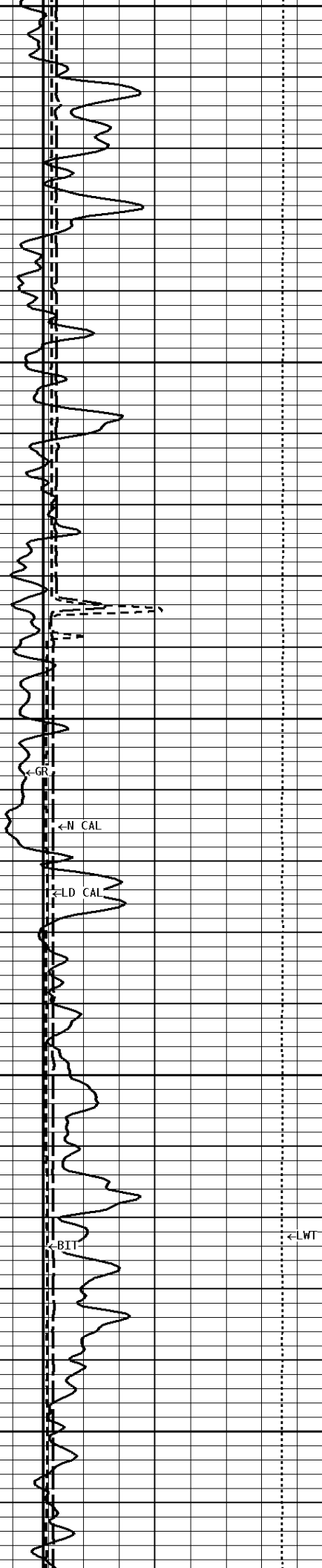
1600

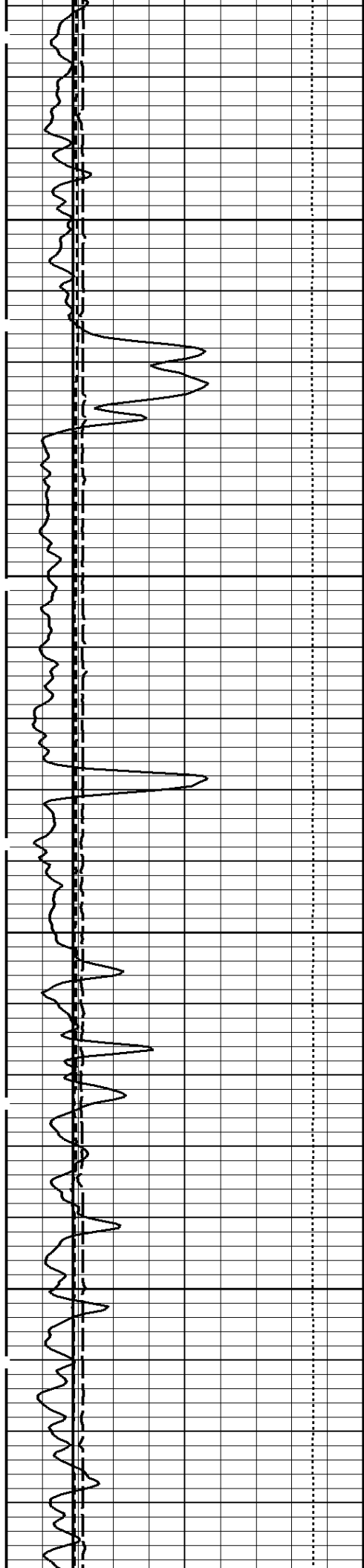
1700



1800

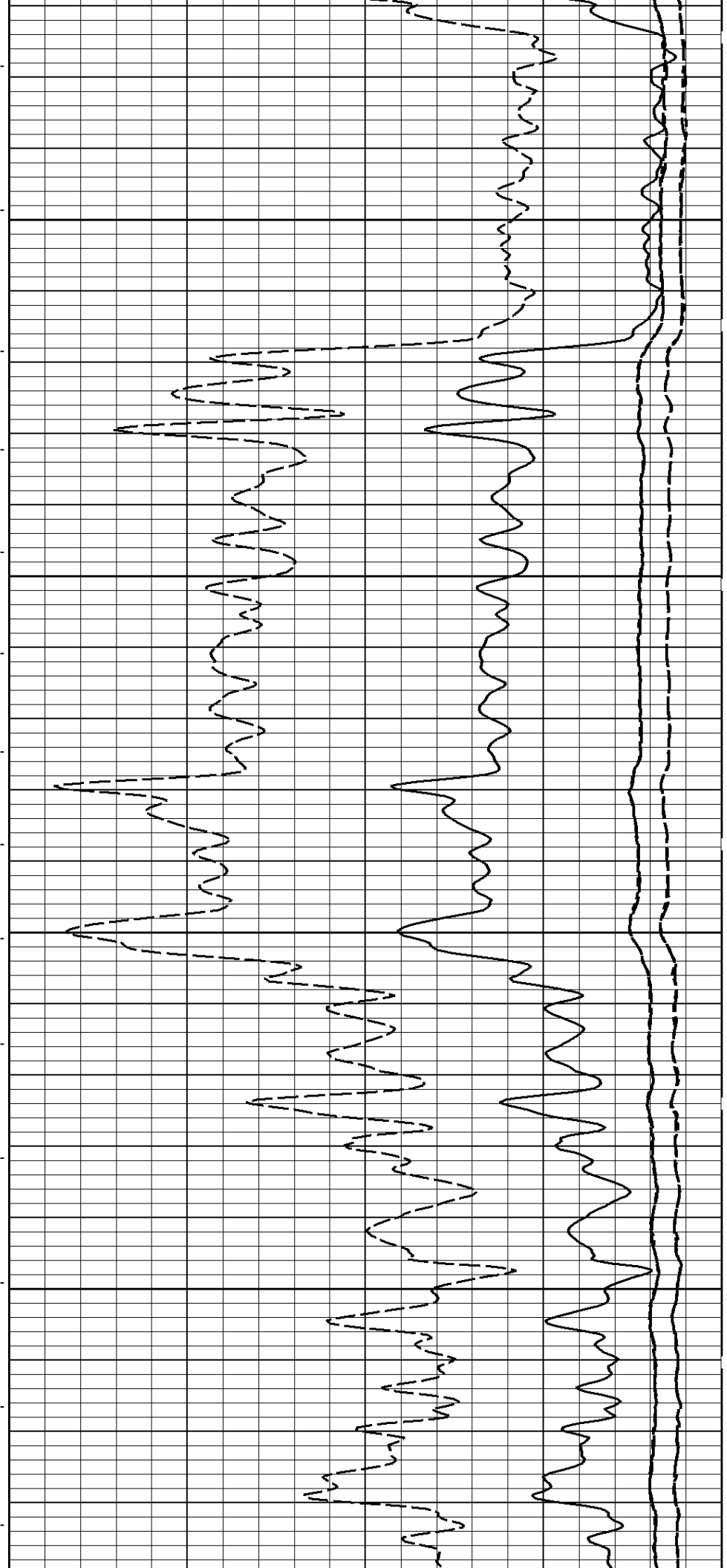
1900





2000

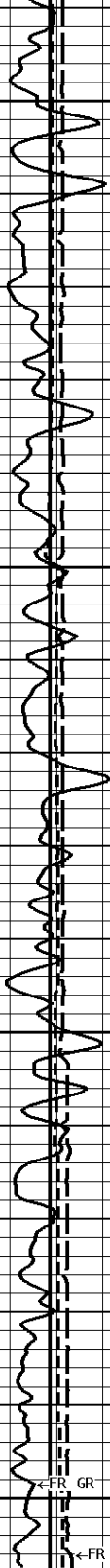
2100



2200

2300

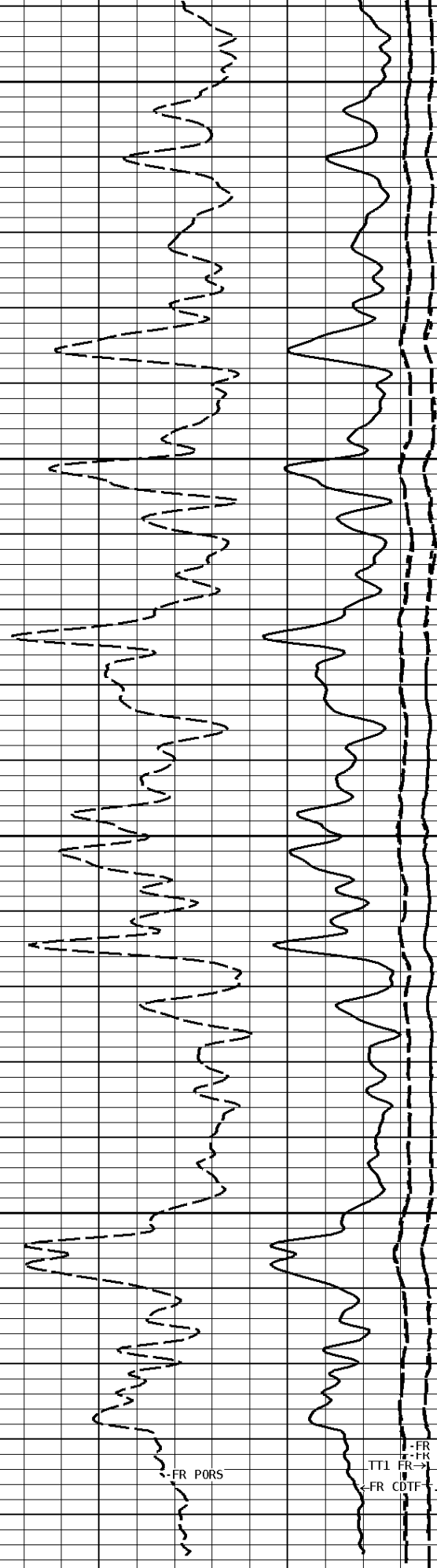
2400



←FR GR

←FR N CAL

←FR LD CAL

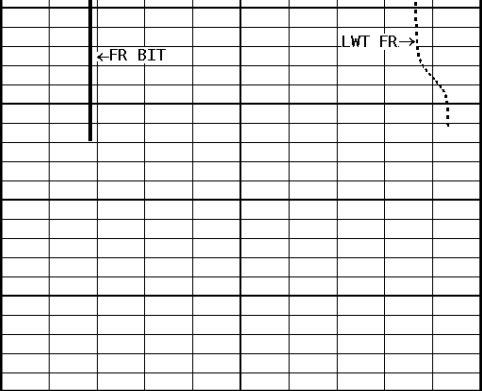


←FR PORS

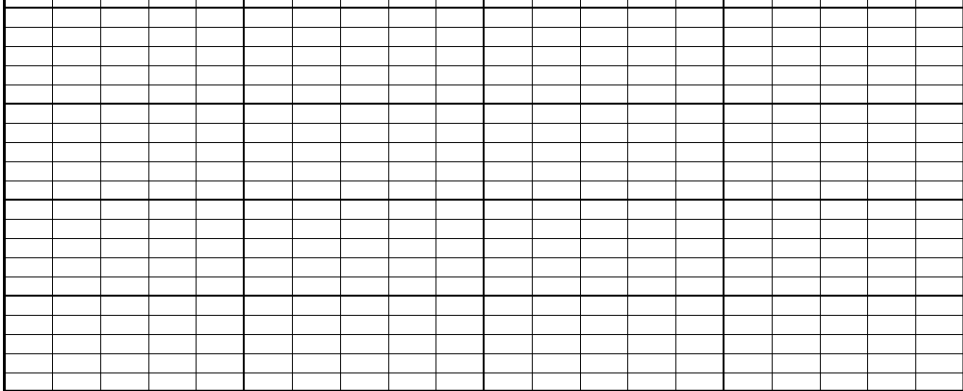
←FR TT3
←FR TT4

TT1 ←FR→

←FR CDTF ←FR TT2



2415



1:240 MAIN SECTION

| | |
|--|------------|
| GAMMA RAY API UNITS | |
| 150 0 | 300 150 |
| TENSION LBS | |
| 10000 | 0 |
| BIT SIZE INCHES (IN) | |
| 6 | 16 |
| DENSITY (X) CALIPER INCHES (IN) | |
| 16 6 | 26 16 |
| NEUTRON (Y) CALIPER INCHES (IN) | |
| 16 6 | 26 16 |

| | |
|--|-----------|
| SONIC POROSITY PERCENT | |
| 30 | -10 |
| COMPENSATED SONIC TRAVEL TIME uSEC/FT | |
| 240 140 | 140 40 |

| | | |
|---------------------|-----|----|
| TT1 uSEC | 950 | 50 |
| TT2 uSEC | 950 | 50 |
| TT3 uSEC | 950 | 50 |
| TT4 uSEC | 950 | 50 |

*** Borehole Zone Factors ***

| | | | | |
|---------------------|----------------|-----------|------------|-------------|
| Zone 1 | 99999.0 | to | 0.0 | Feet |
| Matrix Transit Time | | | 47.5 | us/ft |
| Fluid Transit Time | | | 189.0 | us/ft |

Well File: RFP_C HEIM 2-19D AUG_24_ QUINT Scale: 1:240 Format: CST-240
 Segment: V1.D1.S6 REPEAT Acquired: 2013-08/24 08:34 3.3.0-12261
 Reference: 0 Processed: 2013-08/24 09:51 3.3.0-12261

| | |
|--|----------|
| NEUTRON (Y) CALIPER INCHES (IN) | |
| 16 6 | 26 16 |
| DENSITY (X) CALIPER | |

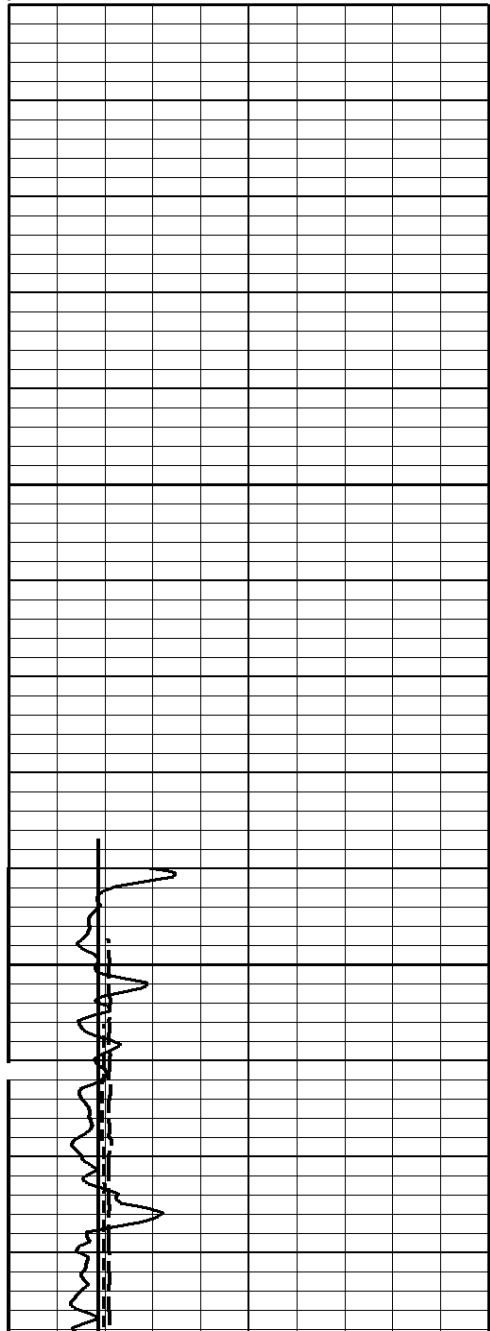
| | | |
|---------------------|-----|----|
| TT4 uSEC | 950 | 50 |
| TT3 uSEC | 950 | 50 |
| TT2 | | |

| | |
|------------------------------------|-----|
| DENSITY (X) CALIBER INCHES (IN) | |
| 16 | 26 |
| 6 | 16 |
| ----- | |
| BIT SIZE INCHES (IN) | |
| 6 | 16 |
| TENSION LBS | |
| 10000 | 0 |
| ----- | |
| GAMMA RAY API UNITS | |
| 150 | 300 |
| 0 | 150 |

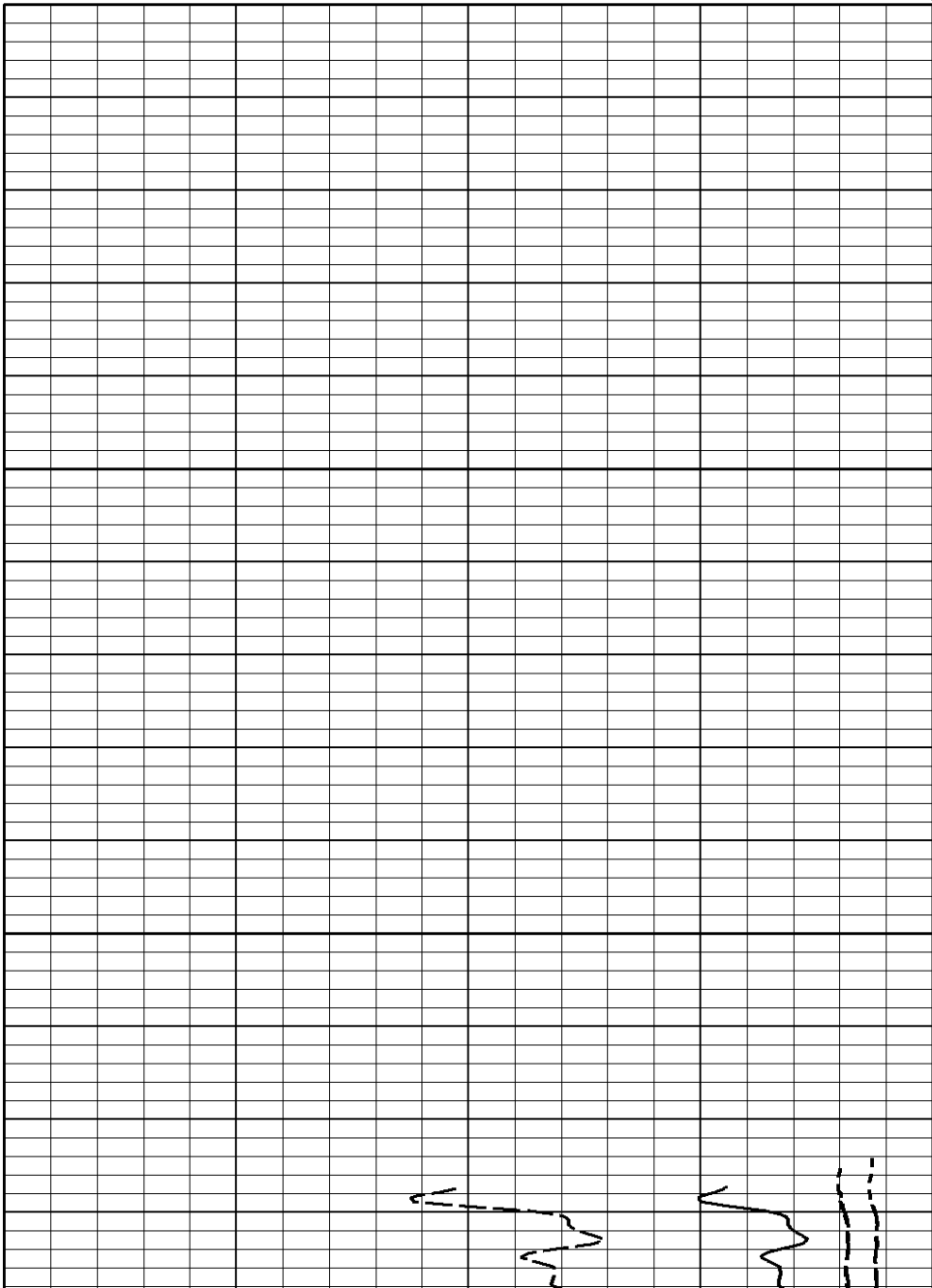
| | |
|-------------|----|
| TT2 uSEC | |
| 950 | 50 |
| ----- | |
| TT1 uSEC | |
| 950 | 50 |
| ----- | |

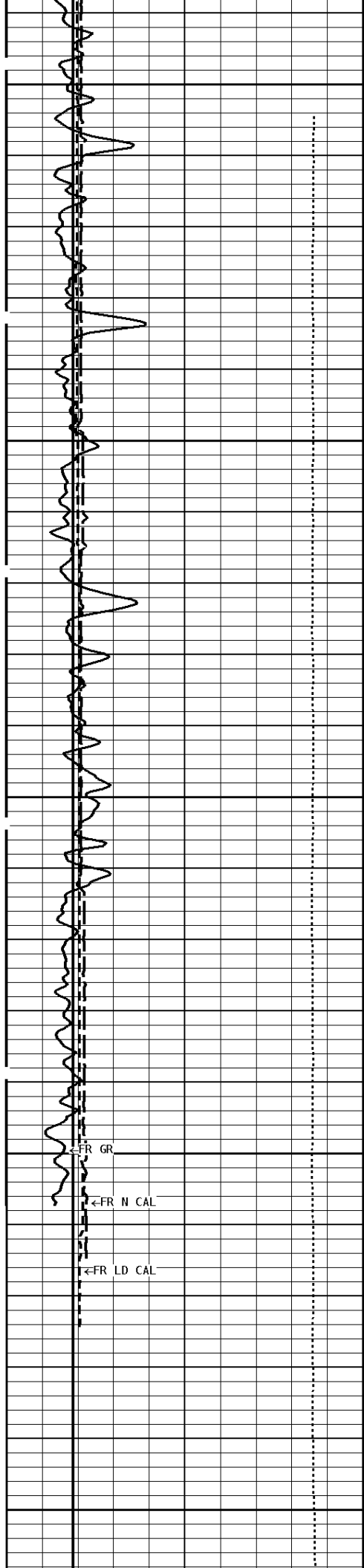
| | |
|--|-----|
| COMPENSATED SONIC TRAVEL TIME uSEC/FT | |
| 240 | 140 |
| 140 | 40 |
| ----- | |
| SONIC POROSITY PERCENT | |
| 30 | -10 |
| ----- | |

1:240 REPEAT SECTION



2100





2200

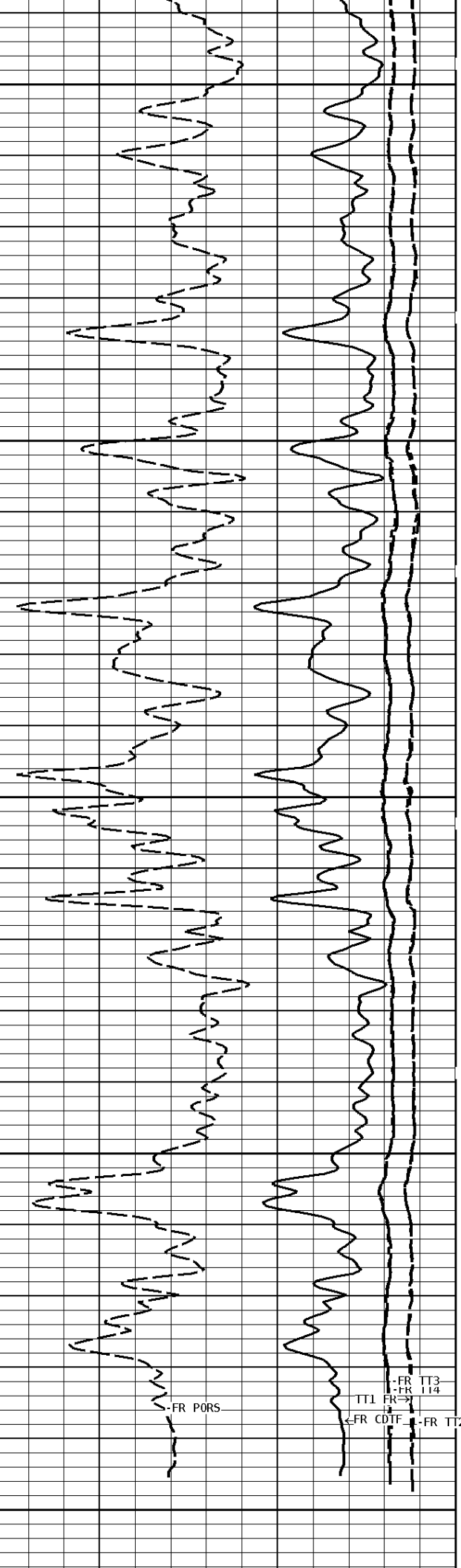
2300

2400

FR GR

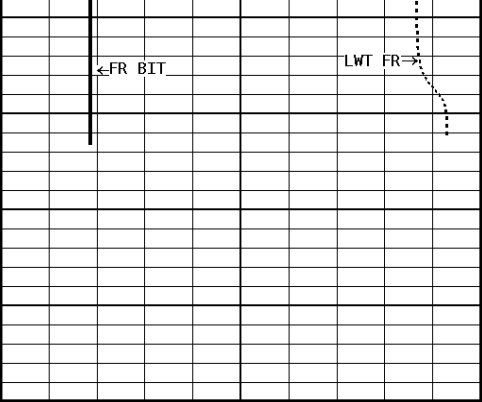
FR N CAL

FR LD CAL



FR PORS

FR TT3
FR 114
FR TT1
FR CDIF
FR TT2



2415

1:240 REPEAT SECTION

| | |
|--|------------|
| GAMMA RAY API UNITS | |
| 150 0 | 300 150 |
| TENSION LBS | |
| 10000 | 0 |
| BIT SIZE INCHES (IN) | |
| 6 | 16 |
| DENSITY (X) CALIPER INCHES (IN) | |
| 16 6 | 26 16 |
| NEUTRON (Y) CALIPER INCHES (IN) | |
| 16 6 | 26 16 |

| | |
|--|-----------|
| SONIC POROSITY PERCENT | |
| 30 | -10 |
| COMPENSATED SONIC TRAVEL TIME uSEC/FT | |
| 240 140 | 140 40 |

| | | |
|---------------------|-----|----|
| TT1 uSEC | 950 | 50 |
| TT2 uSEC | 950 | 50 |
| TT3 uSEC | 950 | 50 |
| TT4 uSEC | 950 | 50 |

*** Borehole Zone Factors ***

| | | | | |
|---------------------|----------------|-----------|------------|-------------|
| Zone 1 | 99999.0 | to | 0.0 | Feet |
| Matrix Transit Time | | | 47.5 | us/ft |
| Fluid Transit Time | | | 189.0 | us/ft |

*** Calibration Summary ***

| | | | | | |
|-------------------------|------------|-------|-----------------|-------|--|
| Shop Calibration | | | | | |
| GRT-B | | | | | |
| Performed : 05-Aug-2013 | | | Time : 09:36 | | |
| Sensor Suite : GR-GR5 | | | ID : GRT-BB-006 | | |
| | Measured | Units | Calibrated | Units | |
| GR | Background | Jig | Jig | GRAPI | |
| | 60 | 375 | 175 | | |

| | | | | | |
|-------------------------|--|--|-----------------|--|--|
| Shop Calibration | | | | | |
| CST-AD | | | | | |
| Performed : 30-MAY-2013 | | | Time : 15:49 | | |
| Sensor Suite : SONLAMA | | | ID : CST-AB-013 | | |

| T/R Pair | Transit Time | | Units |
|----------|--------------|------------|-------|
| | Measured | Calibrated | |
| T1R1 | 208.5 | 208.5 | uS |
| T2R2 | 208.5 | 208.5 | uS |
| T1R2 | 322.5 | 322.5 | uS |
| T2R1 | 322.5 | 322.5 | uS |

| T/R Pair | Amplitude | | Units |
|----------|-----------|------------|-------|
| | Measured | Calibrated | |
| T1R1 | 90.00 | 90.00 | mV |
| T2R2 | 90.00 | 90.00 | mV |
| T1R2 | 78.00 | 78.00 | mV |
| T2R1 | 78.00 | 78.00 | mV |



Tucker
WIRELINE SERVICES

Company: RUNNING FOXES PETROLEUM INC.

Well: C HEIM #2-19D

Location: 990' FNL & 1650' FEL

Logged: 08-24-2013

K.B. Elev: 870.0 Ft