



**COMPLETION  
& PRODUCTION  
SERVICES CO.**

**SONIC  
LOG**

Company MUSTANG ENERGY CORPORATION  
Well GOTTSCHALK "A" #1  
Field WILDCAT  
County RUSH  
State KANSAS

Company MUSTANG ENERGY CORPORATION  
Well GOTTSCHALK "A" #1  
Field WILDCAT  
County RUSH State KANSAS

Location: API # : 15-165-22041-0000  
720' FSL & 2310' FEL  
S/2 - NW - SW - SE  
SEC 2 TWP 16S RGE 19W  
Permanent Datum GROUND LEVEL Elevation 2033  
Log Measured From KELLY BUSHING 8' A.G.L.  
Drilling Measured From KELLY BUSHING  
Other Services  
CDL/CNL  
DIL/MEL  
Elevation  
K.B. 2041  
D.F. 2039  
G.L. 2033

Date	9/9/13		
Run Number	TWO		
Depth Driller	3718		
Depth Logger	3714		
Bottom Logged Interval	3702		
Top Log Interval	1200		
Casing Driller	8 5/8" @1242'		
Casing Logger	1242		
Bit Size	7 7/8"		
Type Fluid in Hole	CHEMICAL MUD	CHLORIDES 5,000 PPM	
Density / Viscosity	9.2/46		
pH / Fluid Loss	10.5/8.8		
Source of Sample	FLOWLINE		
Rim @ Meas. Temp	.500 @ 90F		
Rmf @ Meas. Temp	.375 @ 90F		
Rmc @ Meas. Temp	.600 @ 90F		
Source of Rmf / Rmc	MEASUREMENT		
Rim @ BHT	.398 @ 113F		
Time Circulation Stopped	3.5 HOURS		
Time Logger on Bottom	4:45 P.M.		
Maximum Recorded Temperature	113F		
Equipment Number	4854		
Location	HAYS, KANSAS		
Recorded By	JEFF LUEBBERS		
Witnessed By	CHRIS NEELEY		

<<< Fold Here >>>

All interpretations are opinions based on inferences from electrical or other measurements and we cannot and do not guarantee the accuracy or correctness of any interpretation, and we shall not, except in the case of gross or willful negligence on our part, be liable or responsible for any loss, costs, damages, or expenses incurred or sustained by anyone resulting from any interpretation made by any of our officers, agents or employees. These interpretations are also subject to our general terms and conditions set out in our current Price Schedule.

**Comments**

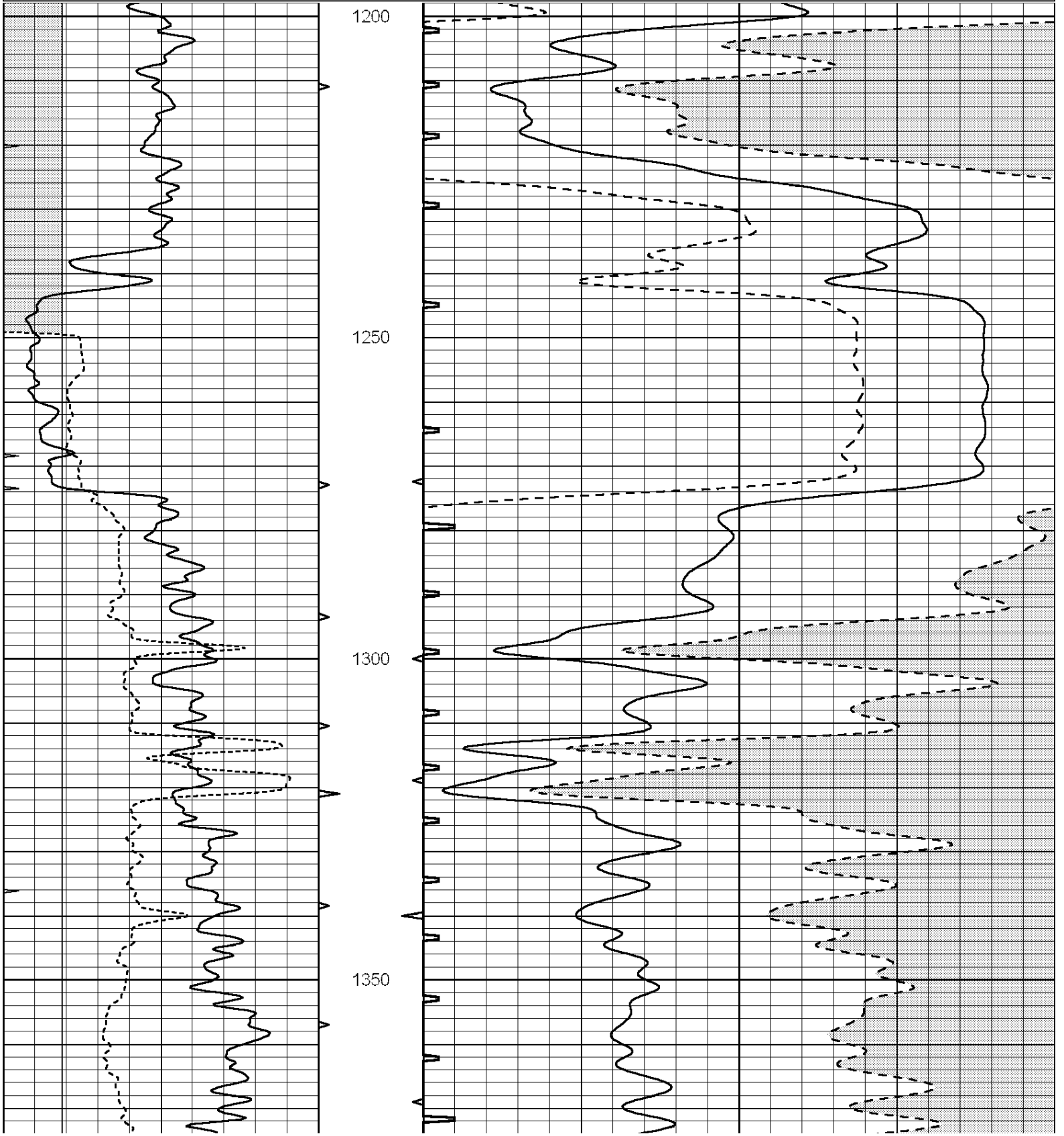
THANK YOU FOR USING "NABORS" HAYS, KANSAS (785) 628-6395  
DIRECTIONS  
SCHOENCHEN, KS. & HWY 183, S. ON 183 1 MILE PAST COUNTY LINE, 3W., N. INTO

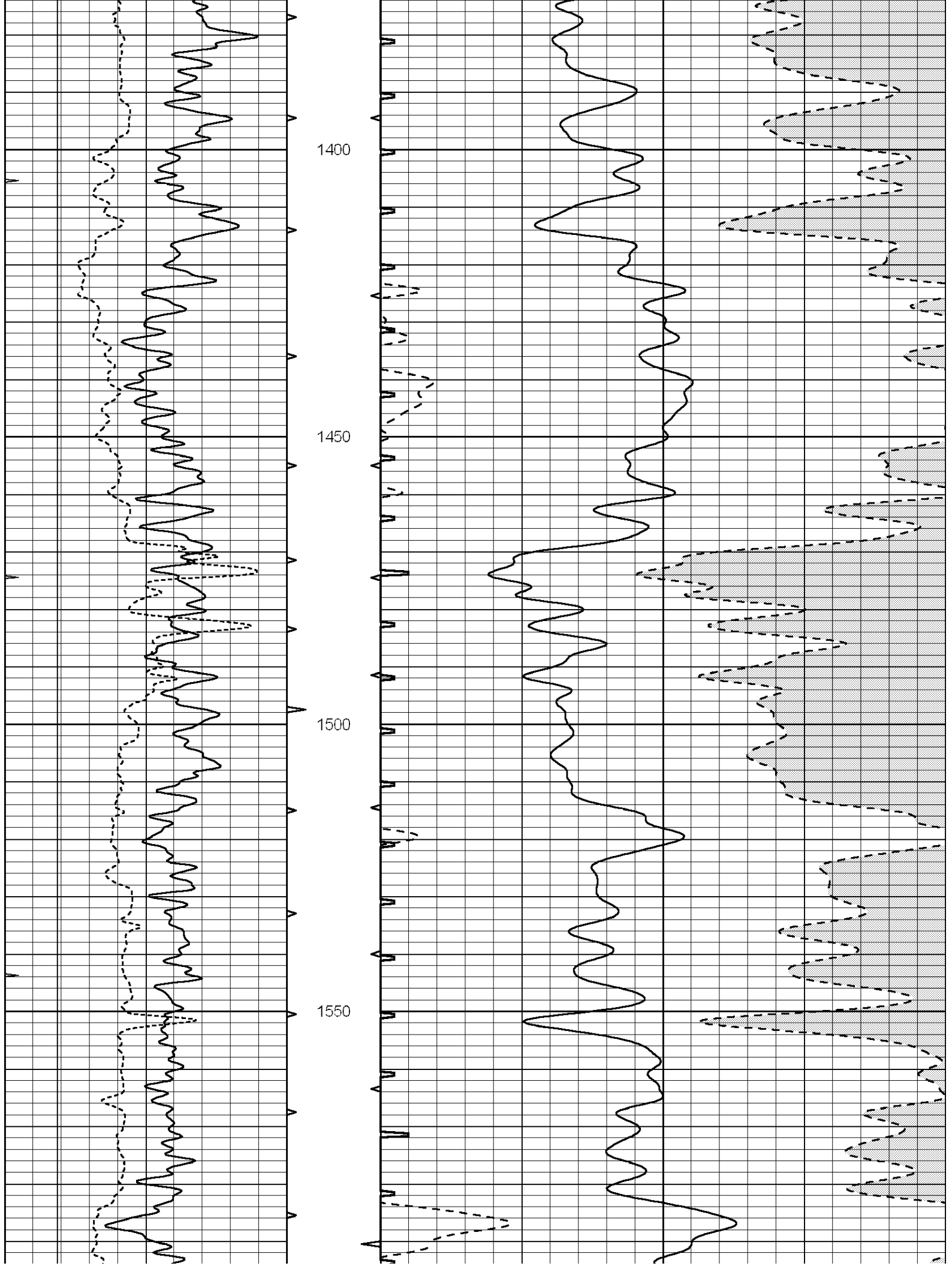


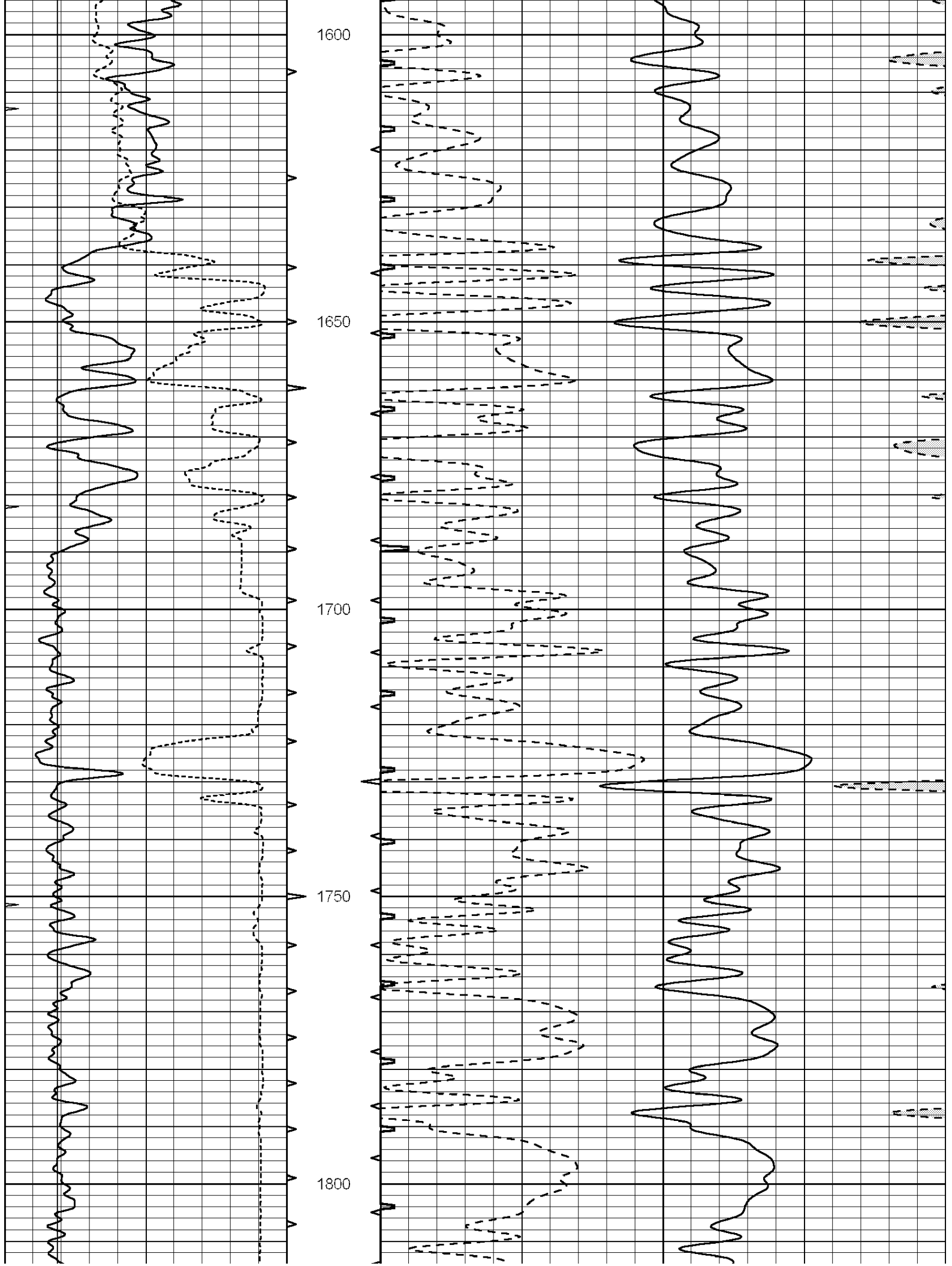
**MAIN SECTION**

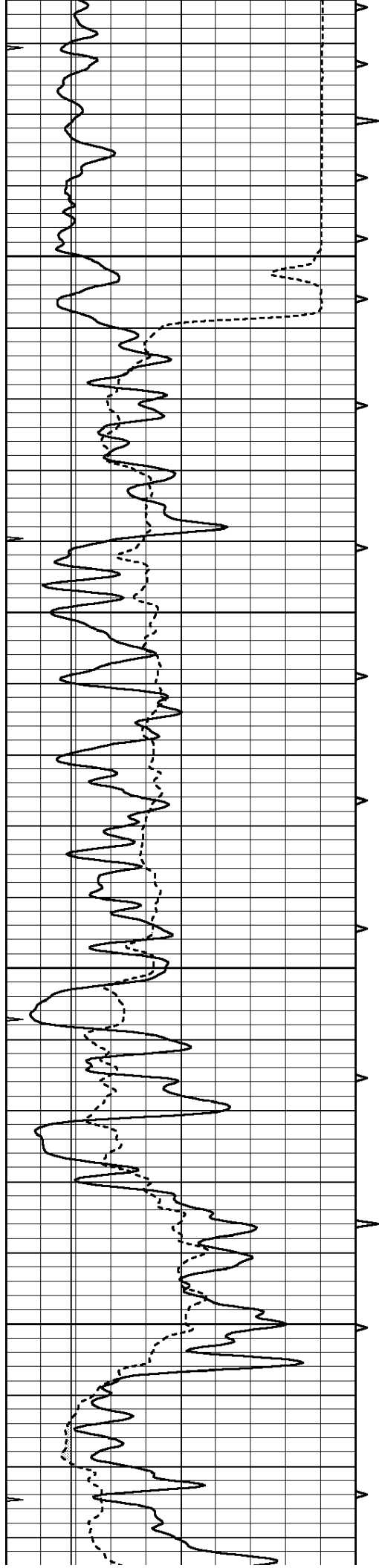
Database File: 011668ddn.db  
 Dataset Pathname: pass6.3  
 Presentation Format: slt  
 Dataset Creation: Mon Sep 09 19:54:25 2013  
 Charted by: Depth in Feet scaled 1:240

0	GAMMA RAY (GAPI)	150	ABHV	140	DELTA TIME (usec/ft)	40	
6	CALIPER (in)	16	10 (ft3)	0	30	SONIC POROSITY (pu)	-10
0	MINMK	20	TBHV	0	ITT (msec)	20	
			0 (ft3)	10			







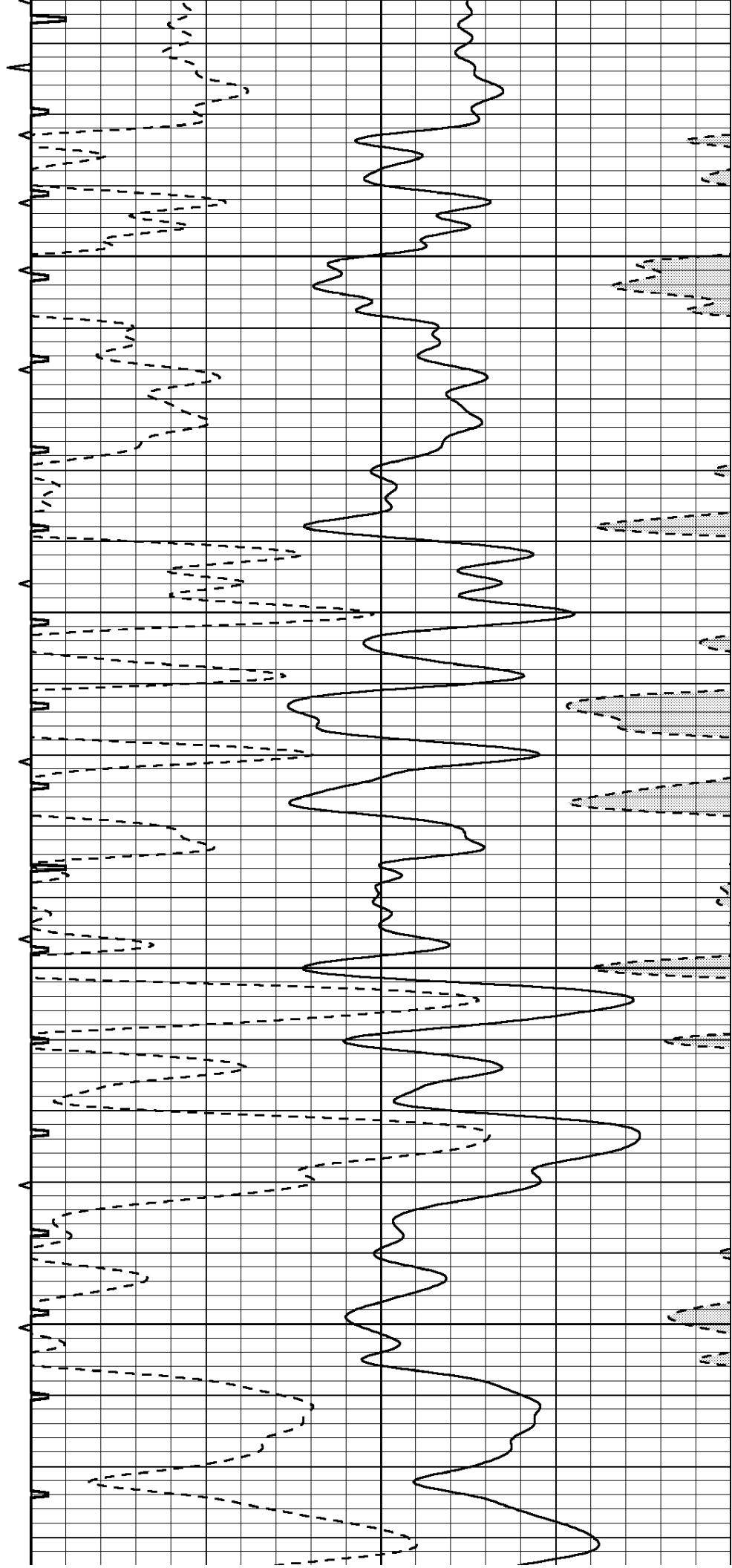


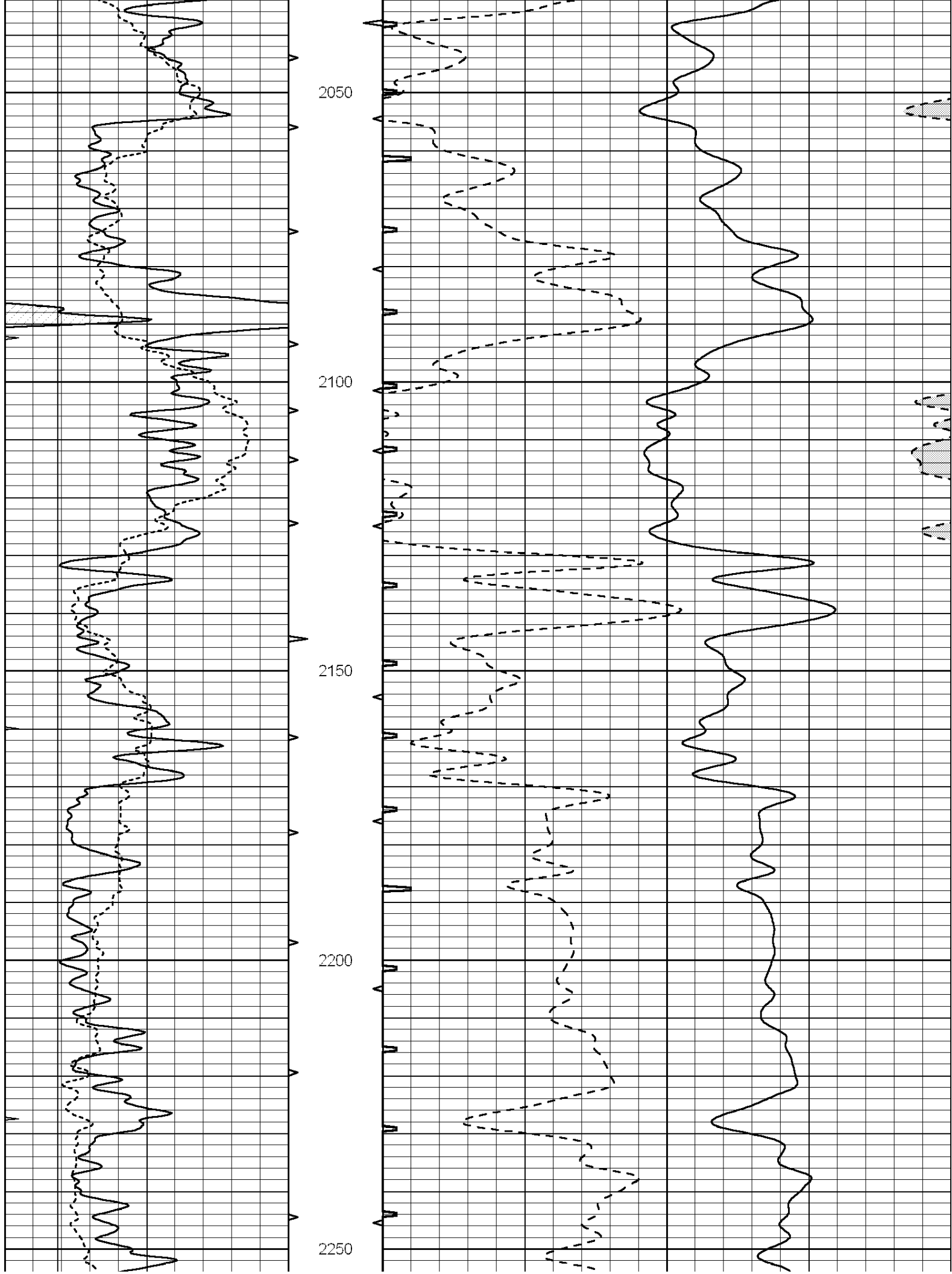
1850

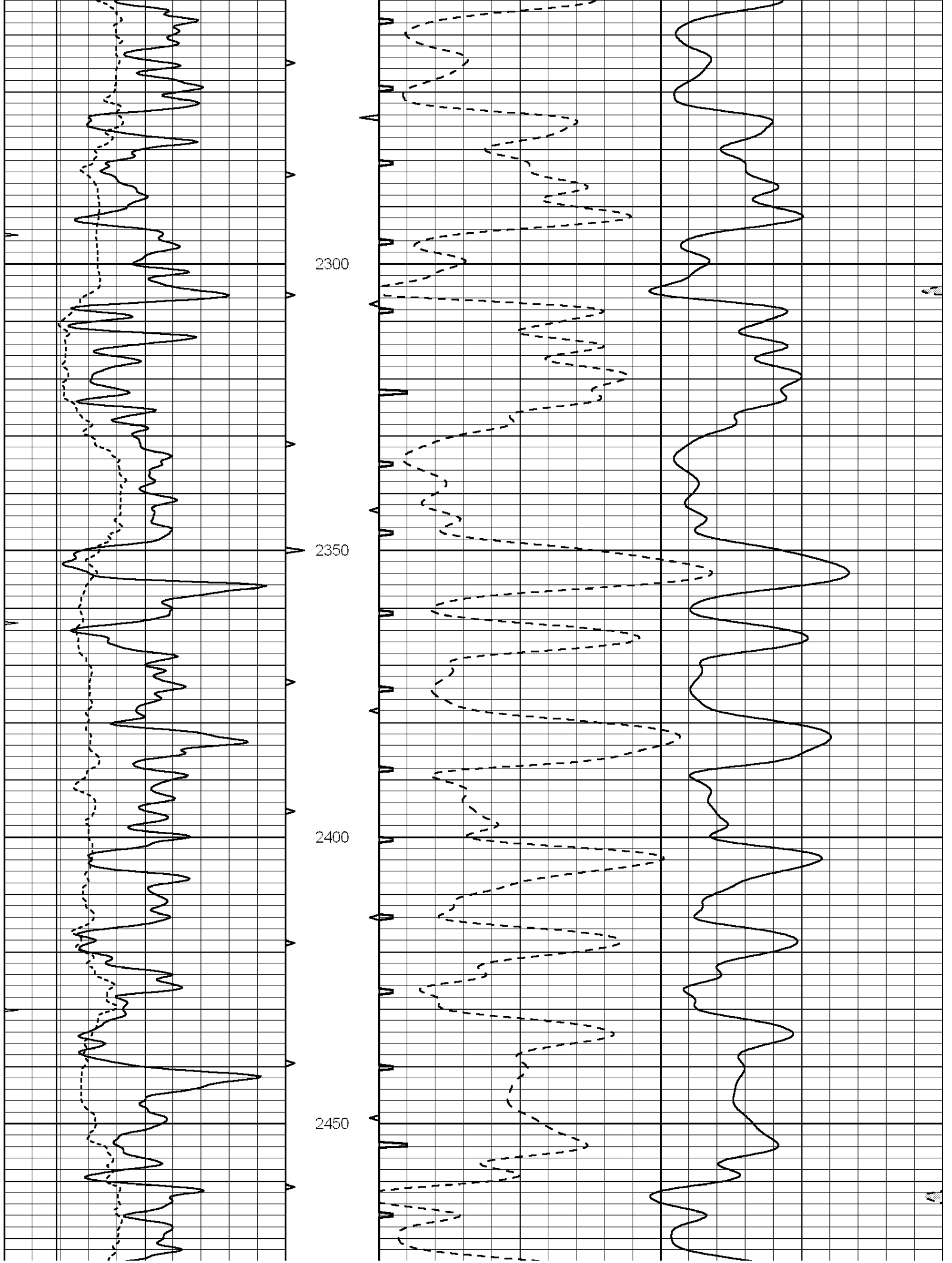
1900

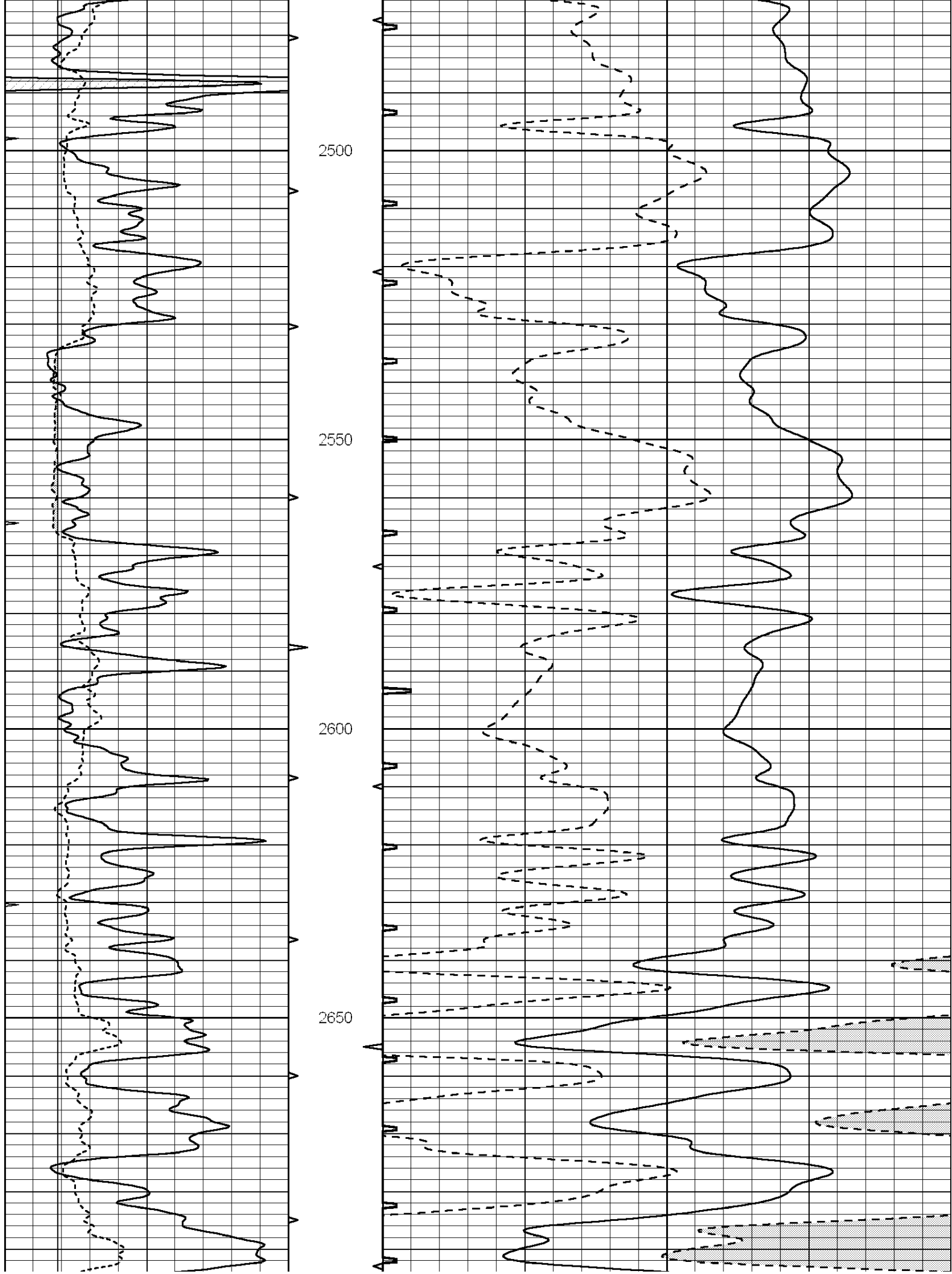
1950

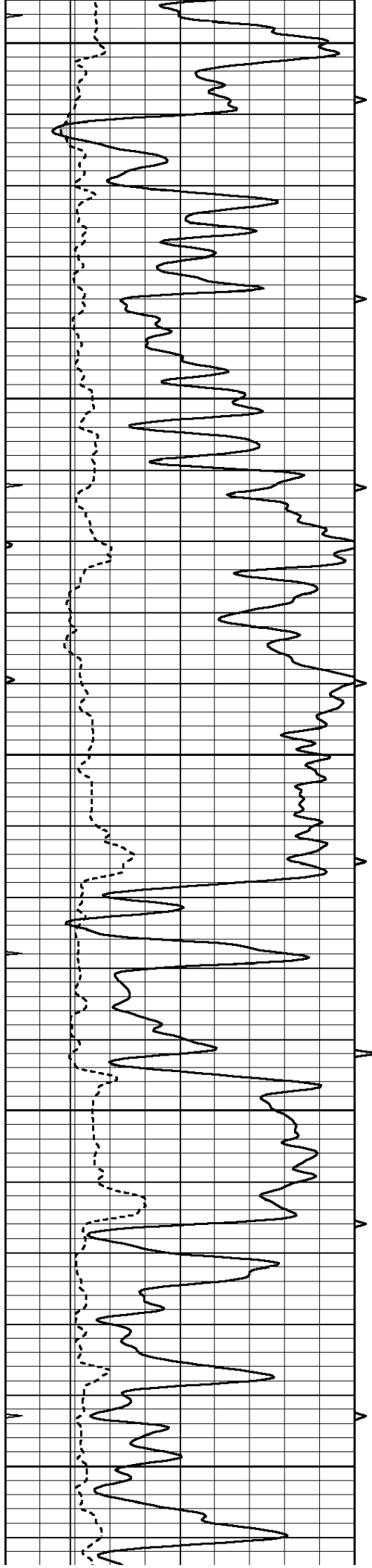
2000











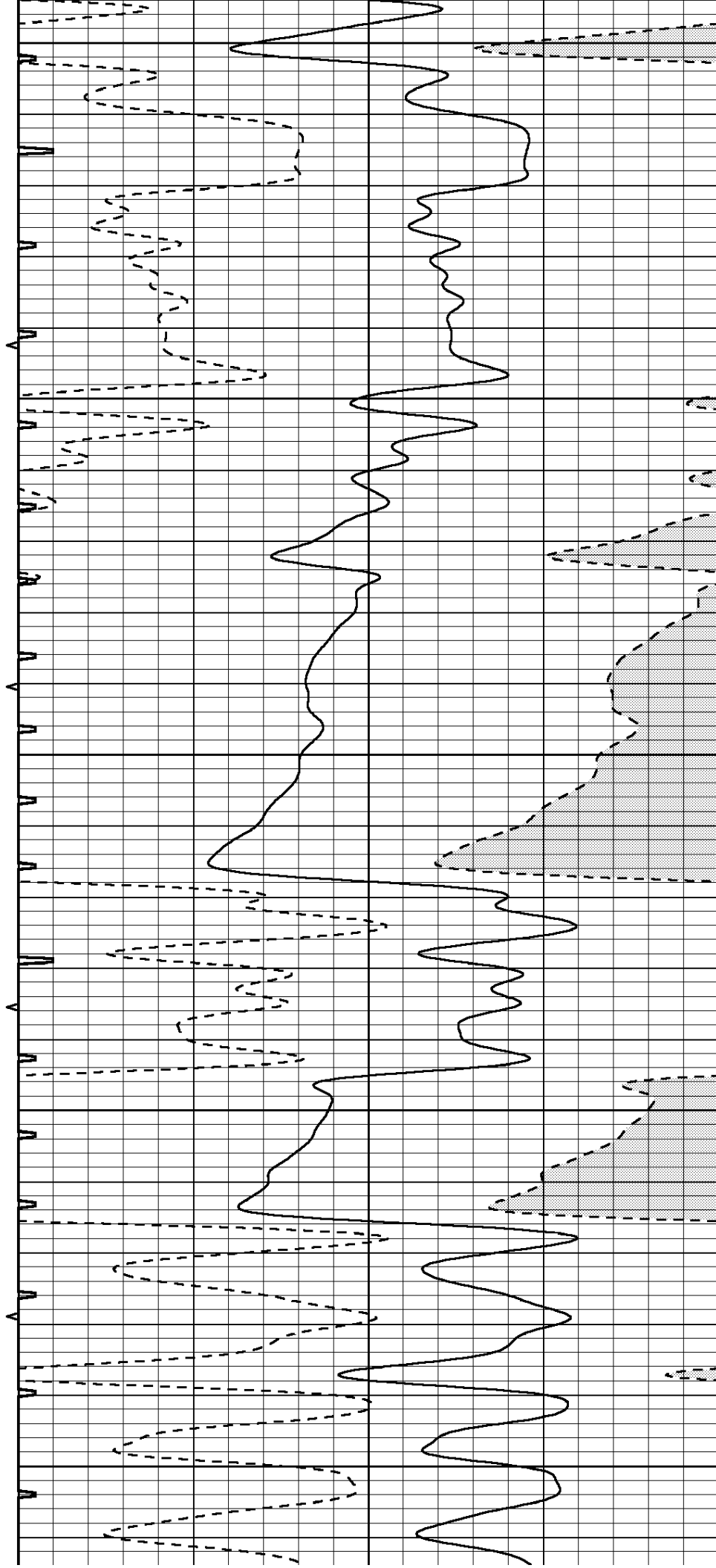
2700

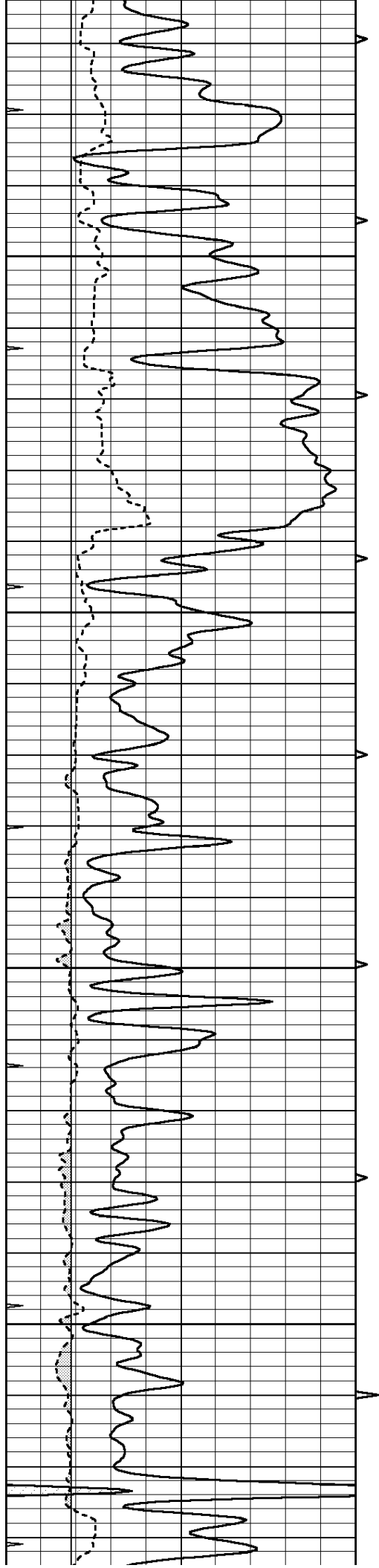
2750

2800

2850

2900



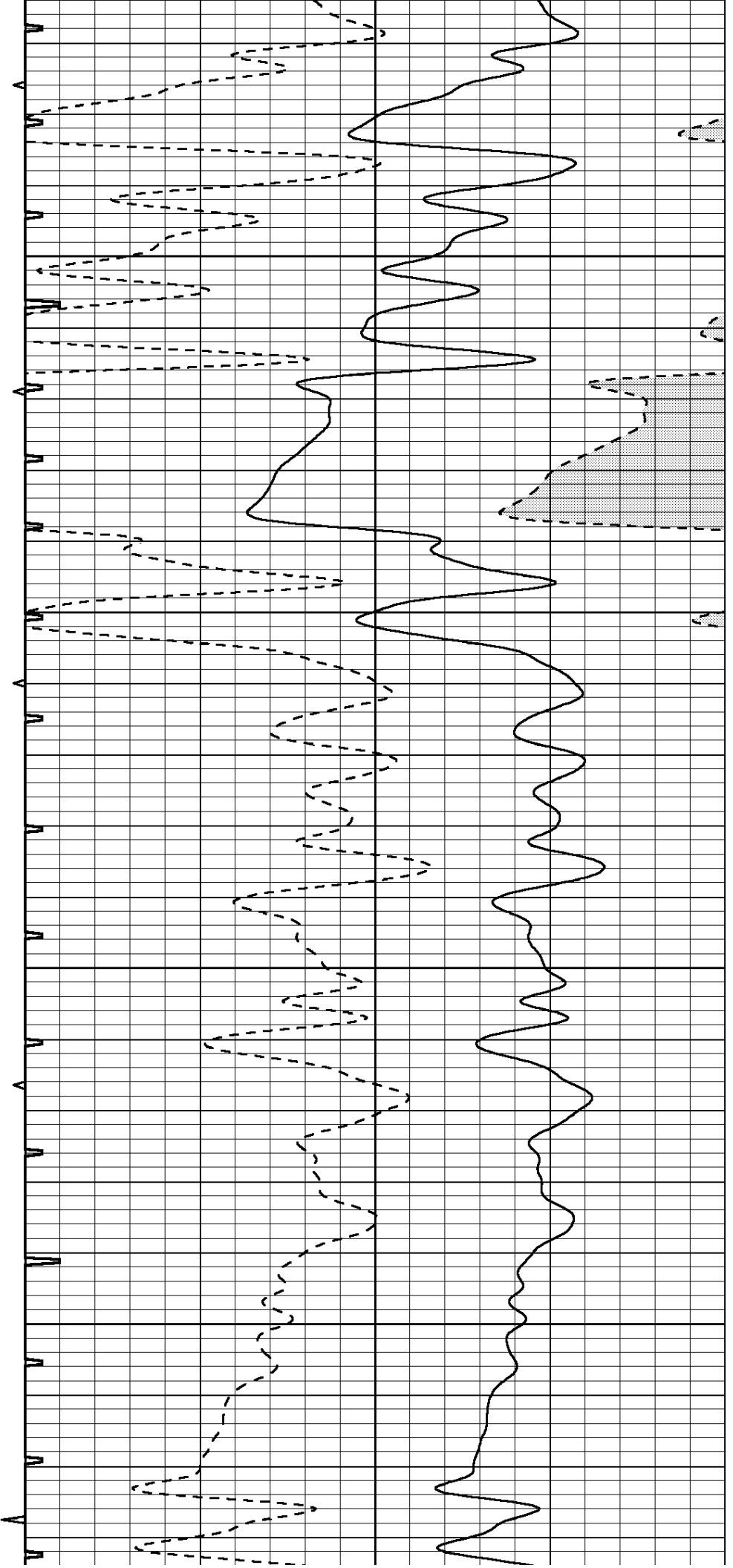


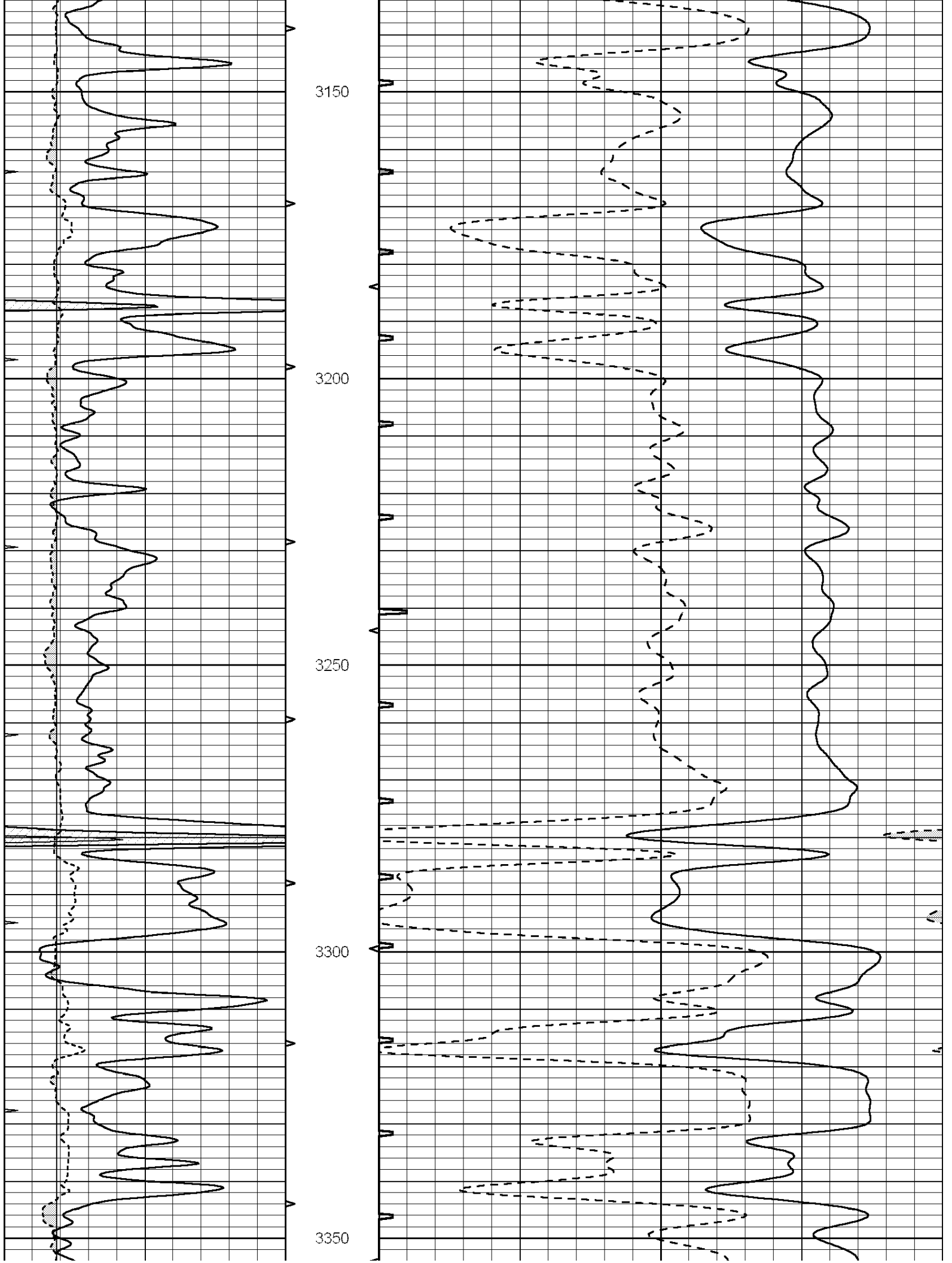
2950

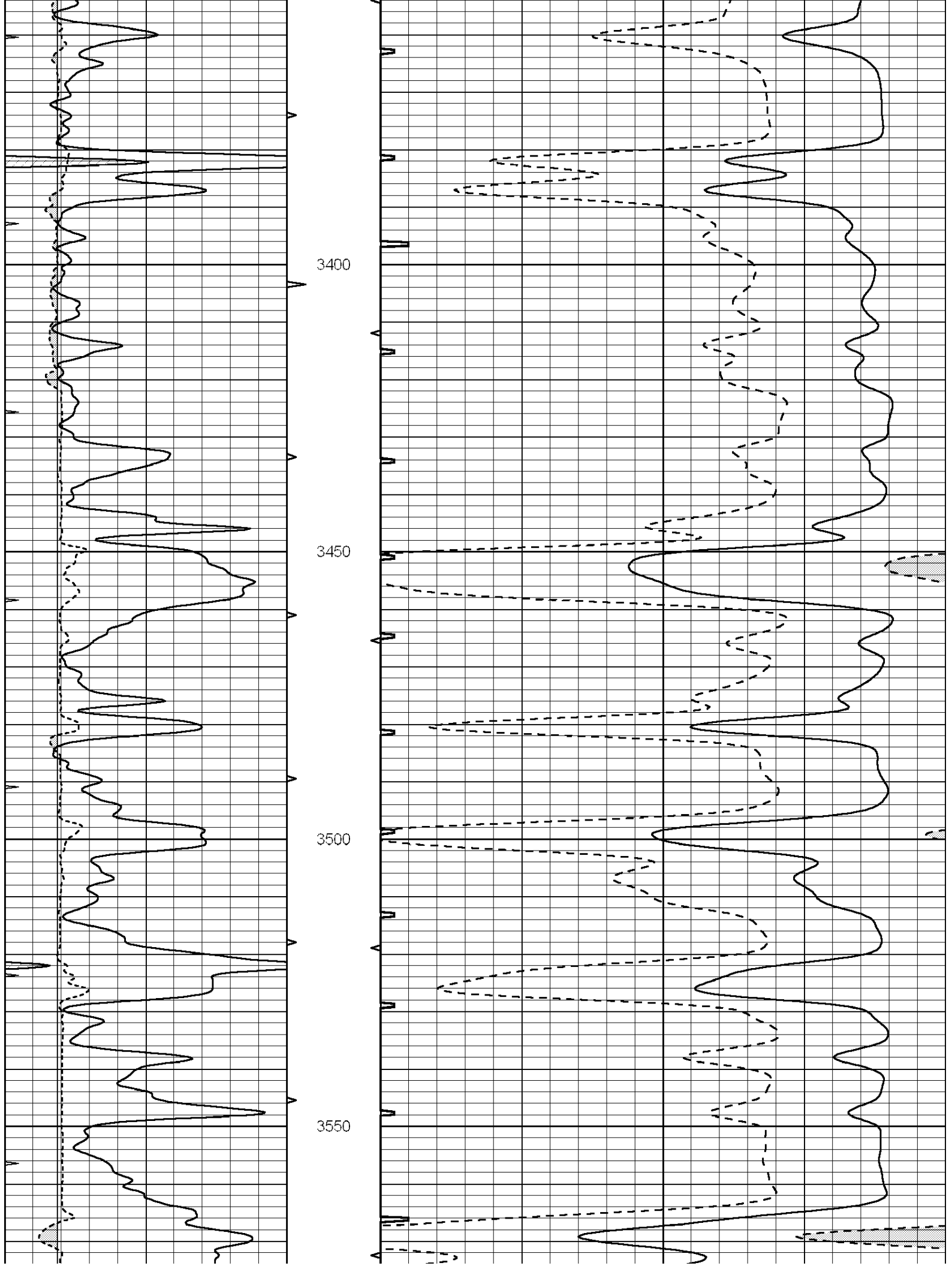
3000

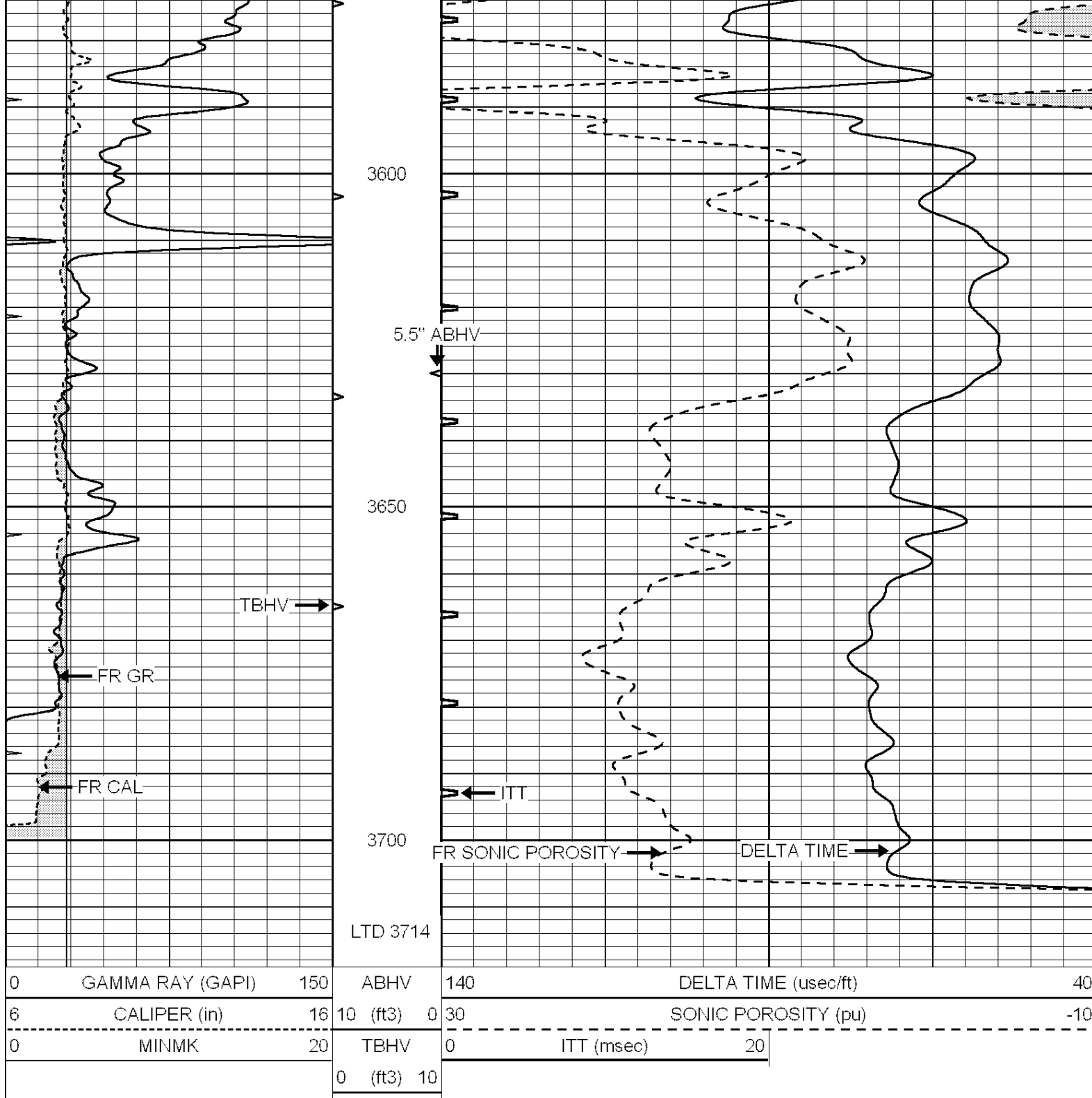
3050

3100









# REPEAT SECTION

Database File: 011668ddn.db  
 Dataset Pathname: pass5.2  
 Presentation Format: slt  
 Dataset Creation: Mon Sep 09 19:06:33 2013  
 Charted by: Depth in Feet scaled 1:240

0	GAMMA RAY (GAPI)	150	ABHV	140	DELTA TIME (usec/ft)	40
6	CALIPER (in)	16	10 (ft3)	0 30	SONIC POROSITY (pu)	-10

