



**COMPLETION  
& PRODUCTION  
SERVICES CO.**

**COMPENSATED  
DENSITY / NEUTRON  
LOG**

Company MUSTANG ENERGY CORPORATION  
Well GOTTSCHALK "A" #1  
Field WILDCAT  
County RUSH  
State KANSAS

Company MUSTANG ENERGY CORPORATION  
Well GOTTSCHALK "A" #1  
Field WILDCAT  
County RUSH State KANSAS

Location: API # : 15-165-22041-0000  
720' FSL & 2310' FEL  
S/2 - NW - SW - SE  
SEC 2 TWP 16S RGE 19W  
Permanent Datum GROUND LEVEL Elevation 2033  
Log Measured From KELLY BUSHING 8' A.G.L.  
Drilling Measured From KELLY BUSHING  
Other Services  
DIL/MEL  
SONIC  
Elevation  
K.B. 2041  
D.F. 2039  
G.L. 2033

Date	9/9/13		
Run Number	ONE		
Depth Driller	3718		
Depth Logger	3714		
Bottom Logged Interval	3690		
Top Log Interval	2900		
Casing Driller	8 5/8" @ 1242'		
Casing Logger	1242		
Bit Size	7 7/8"		
Type Fluid in Hole	CHEMICAL MUD	CHLORIDES 5,000 PPM	
Density / Viscosity	9.2/46		
pH / Fluid Loss	10.5/8.8		
Source of Sample	FLOWLINE		
Rim @ Meas. Temp	.500 @ 90F		
Rmf @ Meas. Temp	.375 @ 90F		
Rmc @ Meas. Temp	.600 @ 90F		
Source of Rmf / Rmc	MEASUREMENT		
Rim @ BHT	.398 @ 113F		
Time Circulation Stopped	2 HOURS		
Time Logger on Bottom	4:45 P.M.		
Maximum Recorded Temperature	113F		
Equipment Number	4854		
Location	HAYS, KANSAS		
Recorded By	JEFF LUEBBERS		
Witnessed By	CHRIS NEELEY		

<<< Fold Here >>>

All interpretations are opinions based on inferences from electrical or other measurements and we cannot and do not guarantee the accuracy or correctness of any interpretation, and we shall not, except in the case of gross or willful negligence on our part, be liable or responsible for any loss, costs, damages, or expenses incurred or sustained by anyone resulting from any interpretation made by any of our officers, agents or employees. These interpretations are also subject to our general terms and conditions set out in our current Price Schedule.

**Comments**

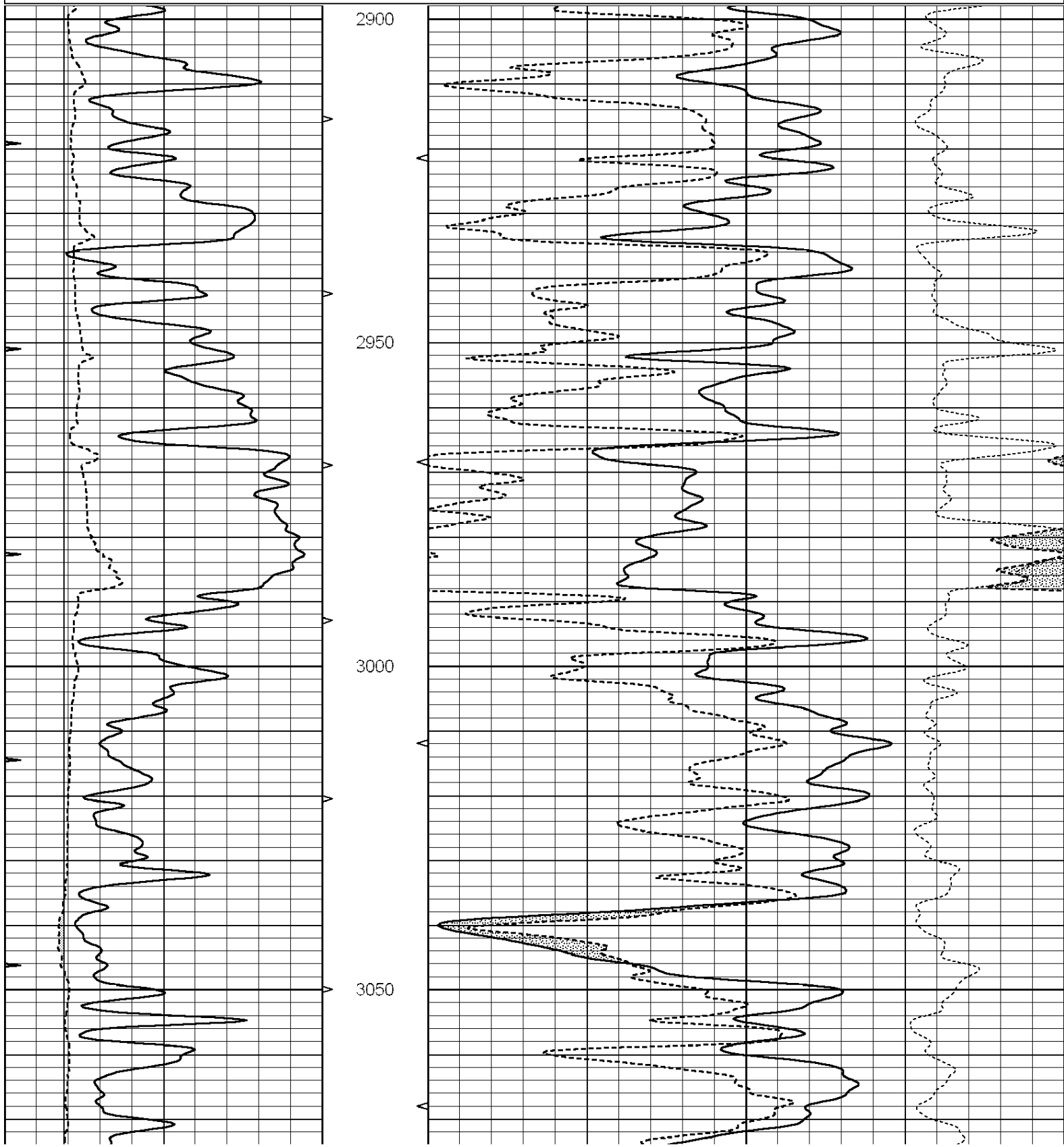
THANK YOU FOR USING "NABORS" HAYS, KANSAS (785) 628-6395  
DIRECTIONS  
SCHOENCHEN, KS. & HWY 183, S. ON 183 1 MILE PAST COUNTY LINE, 3W., N. INTO

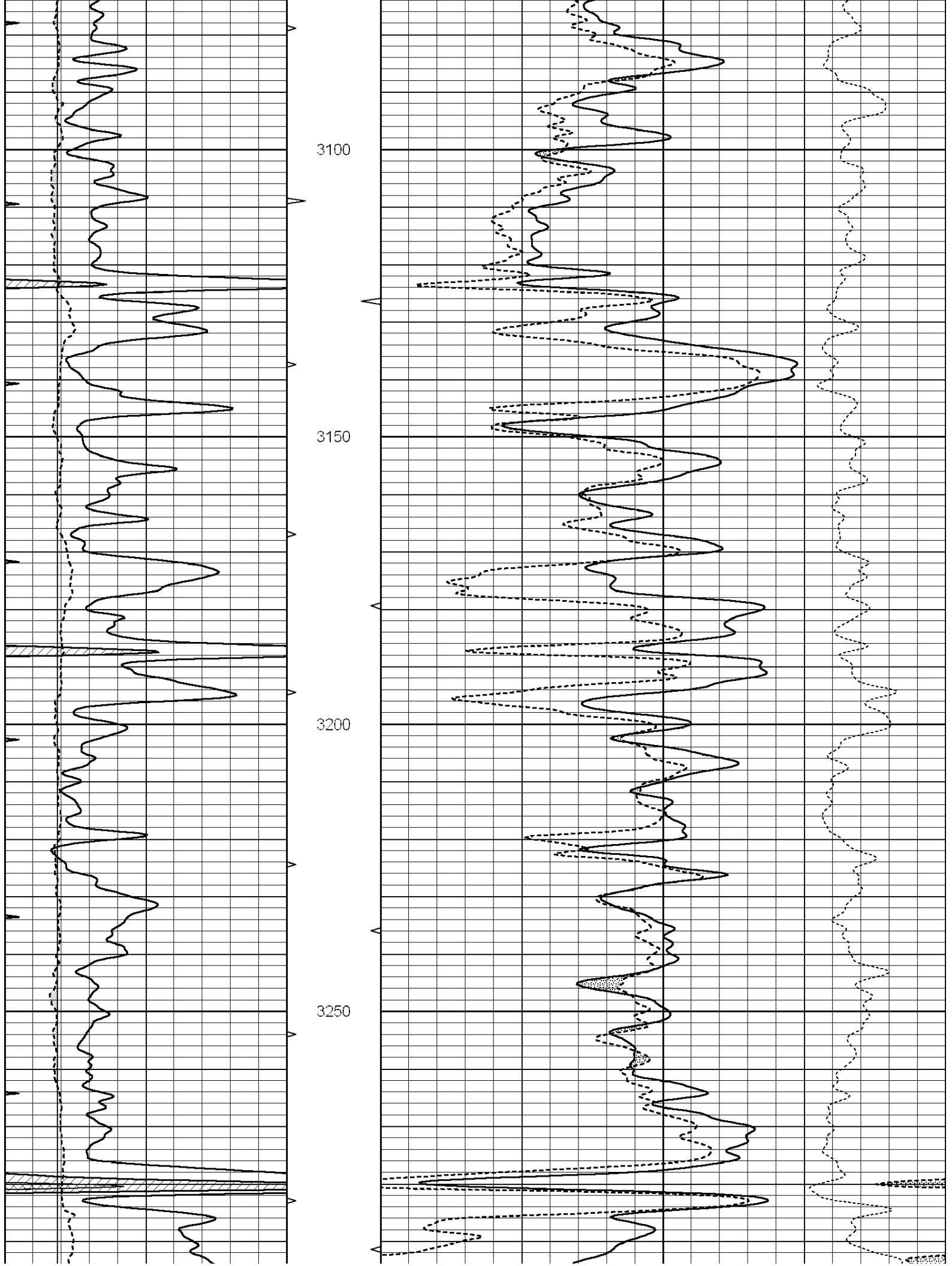


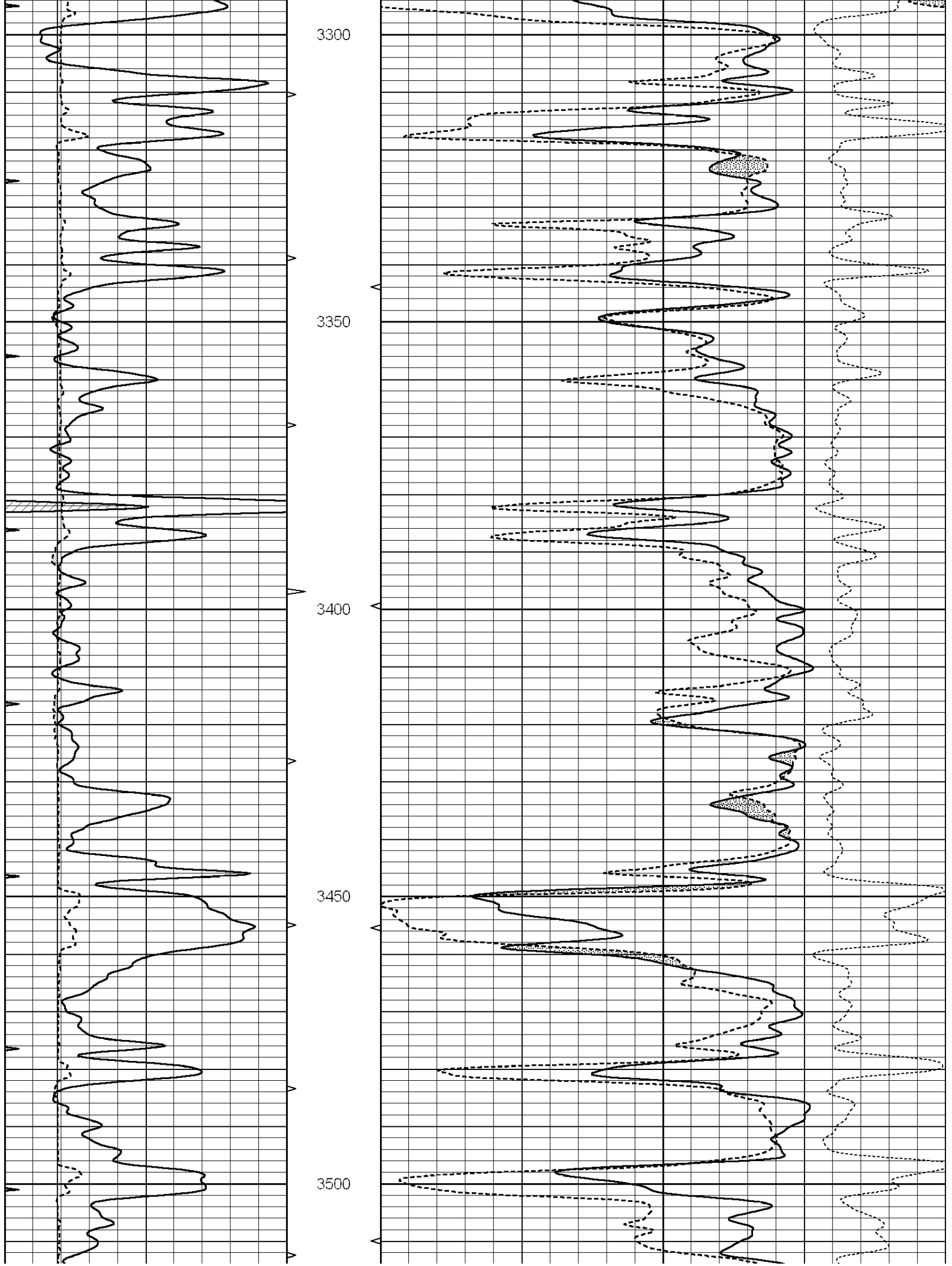
**MAIN SECTION**

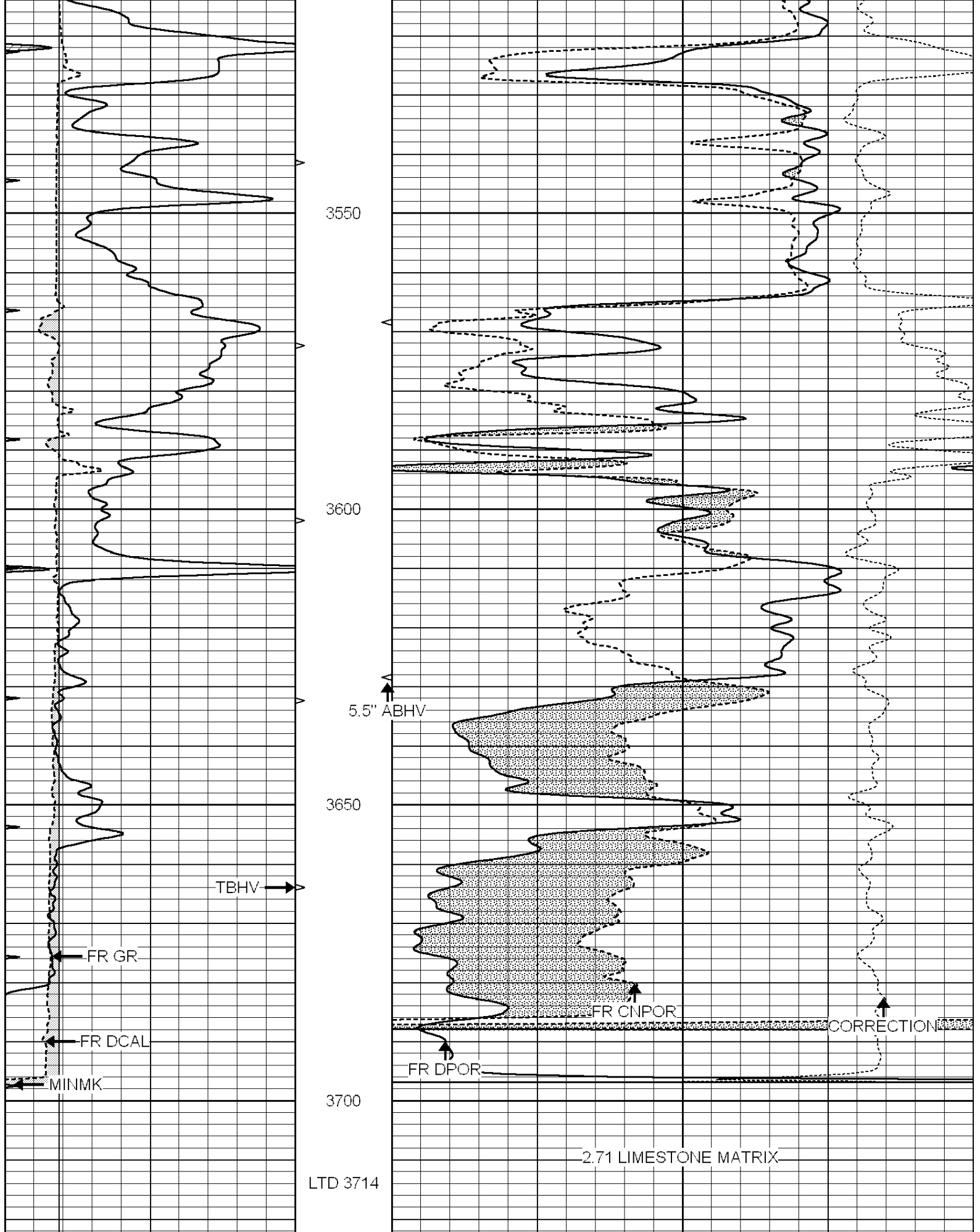
Database File: 011668ddn.db  
 Dataset Pathname: pass3.7  
 Presentation Format: den\_neu  
 Dataset Creation: Mon Sep 09 18:02:23 2013  
 Charted by: Depth in Feet scaled 1:240

0	GAMMA RAY (GAPI)	150	ABHV	30	COMPENSATED DENSITY (pu)	-10
6	CALIPER (in)	16	10 (ft3)	0 30	COMPENSATED NEUTRON (pu)	-10
0	MINMK	20	TBHV		-0.25 CORRECTION (g/cc)	0.25
			0 (ft3)	10		









0	GAMMA RAY (GAPI)	150	ABHV	30	COMPENSATED DENSITY (pu)	-10
6	CALIPER (in)	16	10 (ft3)	0 30	COMPENSATED NEUTRON (pu)	-10
0	MINMK	20	TBHV	0.25	CORRECTION (pu)	0.25

0	MINMK	20	TBHV	0	(ft3)	10
---	-------	----	------	---	-------	----

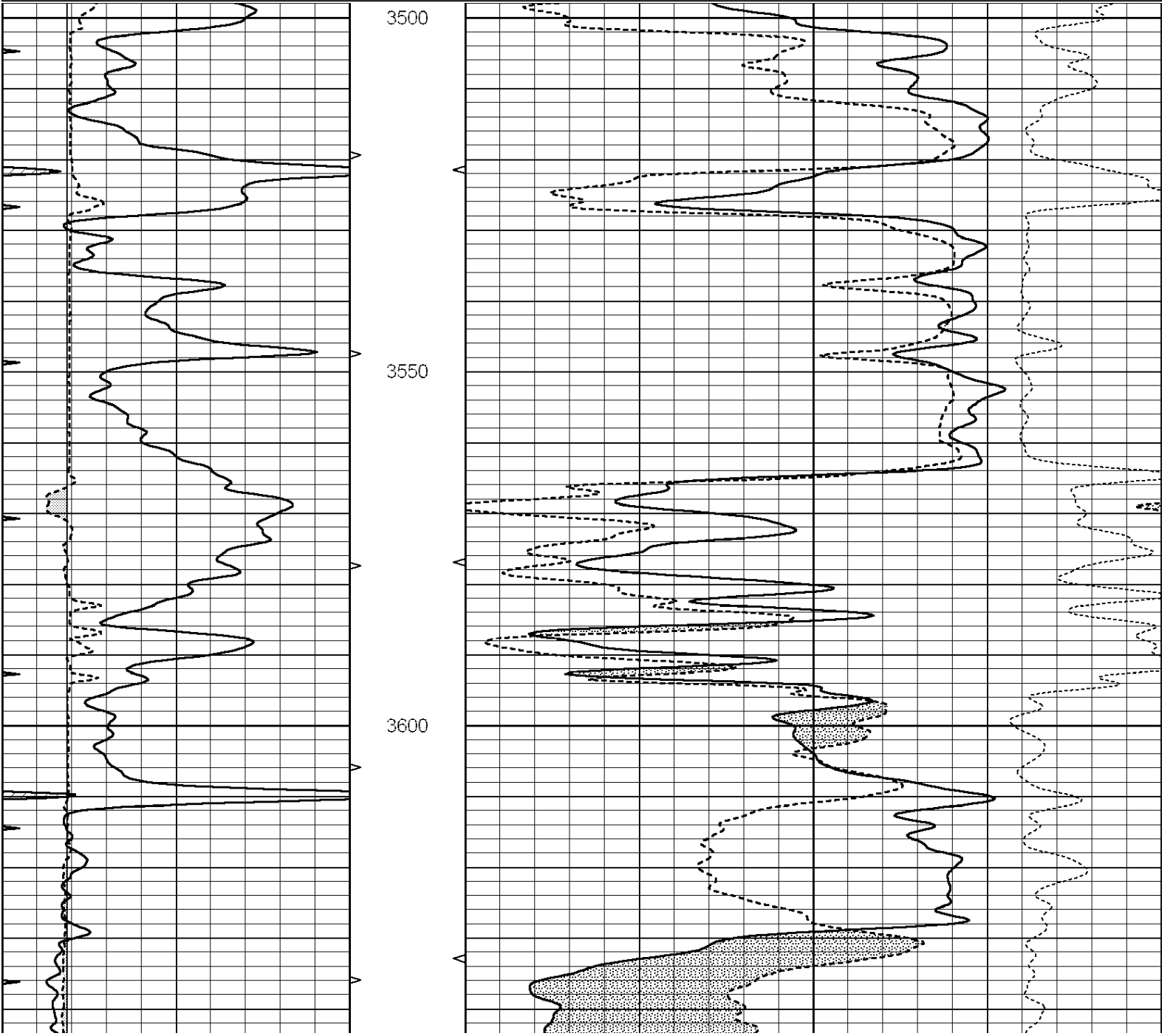
-0.25	CORRECTION (g/cc)	0.25
-------	-------------------	------

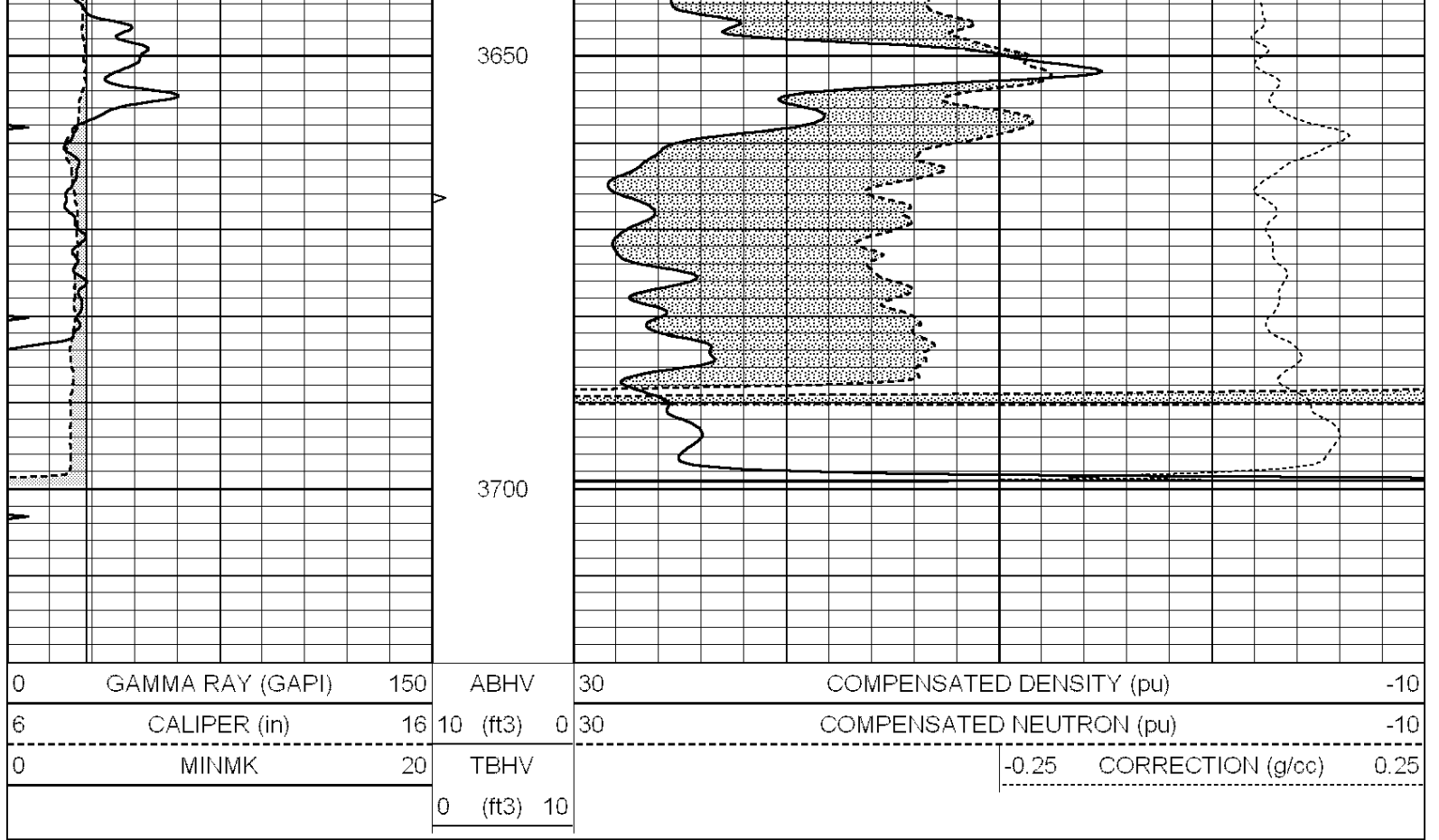


# REPEAT SECTION

Database File: 011668ddn.db  
 Dataset Pathname: pass2.5  
 Presentation Format: den\_neu  
 Dataset Creation: Mon Sep 09 17:03:53 2013 by Calc SOC 120430  
 Charted by: Depth in Feet scaled 1:240

0	GAMMA RAY (GAPI)	150	ABHV	30	COMPENSATED DENSITY (pu)	-10
6	CALIPER (in)	16	10 (ft3)	0 30	COMPENSATED NEUTRON (pu)	-10
0	MINMK	20	TBHV		-0.25 CORRECTION (g/cc)	0.25
			0 (ft3)	10		





Calibration Report

Database File: 011668ddn.db  
 Dataset Pathname: pass3.7  
 Dataset Creation: Mon Sep 09 18:02:23 2013

Dual Induction Calibration Report

Serial-Model: PROBE9-DILG  
 Surface Cal Performed: Mon Sep 09 16:08:22 2013  
 Downhole Cal Performed: Mon Jul 28 12:02:56 2008  
 After Survey Verification Performed: Mon Jul 28 12:02:56 2008

Surface Calibration

Loop:	Readings			References			Results	
	Air	Loop	V	Air	Loop	mmho/m	m	b
Deep	-0.014	0.629	V	0.000	400.000	mmho/m	621.923	-4.000
Medium	0.039	0.728	V	0.000	464.000	mmho/m	640.000	-11.000
Internal:	Zero	Cal		Zero	Cal		m	b
Deep	0.011	0.610	V	0.000	400.000	mmho/m	667.135	-7.256
Medium	0.005	0.712	V	0.000	464.000	mmho/m	655.677	-3.102

Downhole Calibration

	Readings			References			Results	
	Zero	Cal	V	Zero	Cal	mmho/m	m'	b'
Deep	0.000	0.000	V	14.508	388.384	mmho/m	1.000	0.000
Medium	0.000	0.000	V	166.367	504.400	mmho/m	1.000	0.000
LL3		7.500	V		1400.000	Ohm-m		
		0.000	V		20.000	Ohm-m		
		-7.200	V		4000.000	mmho-m		

After Survey Verification

	Readings			Targets			Results	
	Zero	Cal		Zero	Cal		m'	b'
Deep	0.000	0.000	mmho/m	0.000	0.000	mmho/m	0.000	0.000
Medium	0.000	0.000	mmho/m	0.000	0.000	mmho/m	0.000	0.000
LL3		1.000	Ohm-m		1.000	Ohm-m		
		0.000	Ohm-m		0.000	Ohm-m		
		1.000	mmho-m		1.000	mmho-m		

Litho Density Calibration Report  
Serial: 004N Model: PRB

Master Calibration

Performed Mon Jun 03 09:36:56 2013

	Background	Magnesium	Aluminum	Sandstone	
Window 1	1417.6	10391.4	3464.6	11537.5	cps
Window 2	1295.0	8959.7	3050.1	9816.4	cps
Window 3	1105.1	5464.2	2051.0	5838.8	cps
Window 4	315.0	317.7	312.9	319.8	cps
Long Space	0.0	7664.6	1755.0	8521.3	cps
Short Space	1.8	1582.4	1040.8	1699.4	cps
Rho		1.7100	2.5900	1.3800	g/cc
Pe		0.0000	2.5700	1.5500	
Rib Angle	: 44.1	Rib Slope	: 0.970	Density/Spine Ratio	: 0.574
Spine Angle	: 74.1	Spine Slope	: 3.519	Spine Intercept	: -17.0

Before Survey Verification

Performed Wed Dec 31 18:00:00 1969

Window 1	0.0	0.0	0.0	0.0	cps
Window 2	0.0	0.0	0.0	0.0	cps
Window 3	0.0	0.0	0.0	0.0	cps
Window 4	0.0	0.0	0.0	0.0	cps
Long Space	0.0	0.0	0.0	0.0	cps
Short Space	0.0	0.0	0.0	0.0	cps
Measured Rho		0.0000	0.0000	0.0000	g/cc
Measured Correction		0.0000	0.0000	0.0000	g/cc
Measured Pe			0.0000	0.0000	

After Survey Verification

Performed Wed Dec 31 18:00:00 1969

Window 1	0.0	0.0	0.0	0.0	cps
Window 2	0.0	0.0	0.0	0.0	cps
Window 3	0.0	0.0	0.0	0.0	cps
Window 4	0.0	0.0	0.0	0.0	cps
Long Space	0.0	0.0	0.0	0.0	cps
Short Space	0.0	0.0	0.0	0.0	cps
Measured Rho		0.0000	0.0000	0.0000	g/cc
Measured Correction		0.0000	0.0000	0.0000	g/cc
Measured Pe			0.0000	0.0000	

Compensated Neutron Calibration Report

Serial Number: 070808  
Tool Model: Probe

PRE-SURVEY VERIFICATION

Detector Readings Measured Target

Short Space  
Long Space

cps  
cps

pu

pu

POST-SURVEY VERIFICATION

Detector

Readings

Measured

Target

Short Space  
Long Space

cps  
cps

pu

pu

Gamma Ray Calibration Report

Serial Number: 070559  
Tool Model: OPEN\_GR  
Performed: Wed Jun 12 18:25:42 2013

Calibrator Value: 1.0 GAPI

Background Reading: 0.0 cps  
Calibrator Reading: 1.0 cps

Sensitivity: 0.3500 GAPI/cps