



**COMPLETION
& PRODUCTION
SERVICES CO.**

**MICRO
LOG**

Company MUSTANG ENERGY CORPORATION
Well GOTTSCHALK "A" #1
Field WILDCAT
County RUSH
State KANSAS

Company MUSTANG ENERGY CORPORATION
Well GOTTSCHALK "A" #1
Field WILDCAT
County RUSH State KANSAS

Location: API # : 15-165-22041-0000
720' FSL & 2310' FEL
S/2 - NW - SW - SE
SEC 2 TWP 16S RGE 19W
Permanent Datum GROUND LEVEL Elevation 2033
Log Measured From KELLY BUSHING 8' A.G.L.
Drilling Measured From KELLY BUSHING
Other Services
CDL/CNL
DIL/SONIC
Elevation
K.B. 2041
D.F. 2039
G.L. 2033

Date	9/9/13
Run Number	TWO
Depth Driller	3718
Depth Logger	3714
Bottom Logged Interval	3692
Top Log Interval	2900
Casing Driller	8 5/8" @1242'
Casing Logger	1242
Bit Size	7 7/8"
Type Fluid in Hole	CHEMICAL MUD
Density / Viscosity	9.2/46
pH / Fluid Loss	10.5/8.8
Source of Sample	FLOWLINE
Rim @ Meas. Temp	.500 @ 90F
Rmf @ Meas. Temp	.375 @ 90F
Rmc @ Meas. Temp	.600 @ 90F
Source of Rmf / Rmc	MEASUREMENT
Rim @ BHT	.398 @ 113F
Time Circulation Stopped	3.5 HOURS
Time Logger on Bottom	4:45 P.M.
Maximum Recorded Temperature	113F
Equipment Number	4854
Location	HAYS, KANSAS
Recorded By	JEFF LUEBBERS
Witnessed By	CHRIS NEELEY

<<< Fold Here >>>

All interpretations are opinions based on inferences from electrical or other measurements and we cannot and do not guarantee the accuracy or correctness of any interpretation, and we shall not, except in the case of gross or willful negligence on our part, be liable or responsible for any loss, costs, damages, or expenses incurred or sustained by anyone resulting from any interpretation made by any of our officers, agents or employees. These interpretations are also subject to our general terms and conditions set out in our current Price Schedule.

Comments

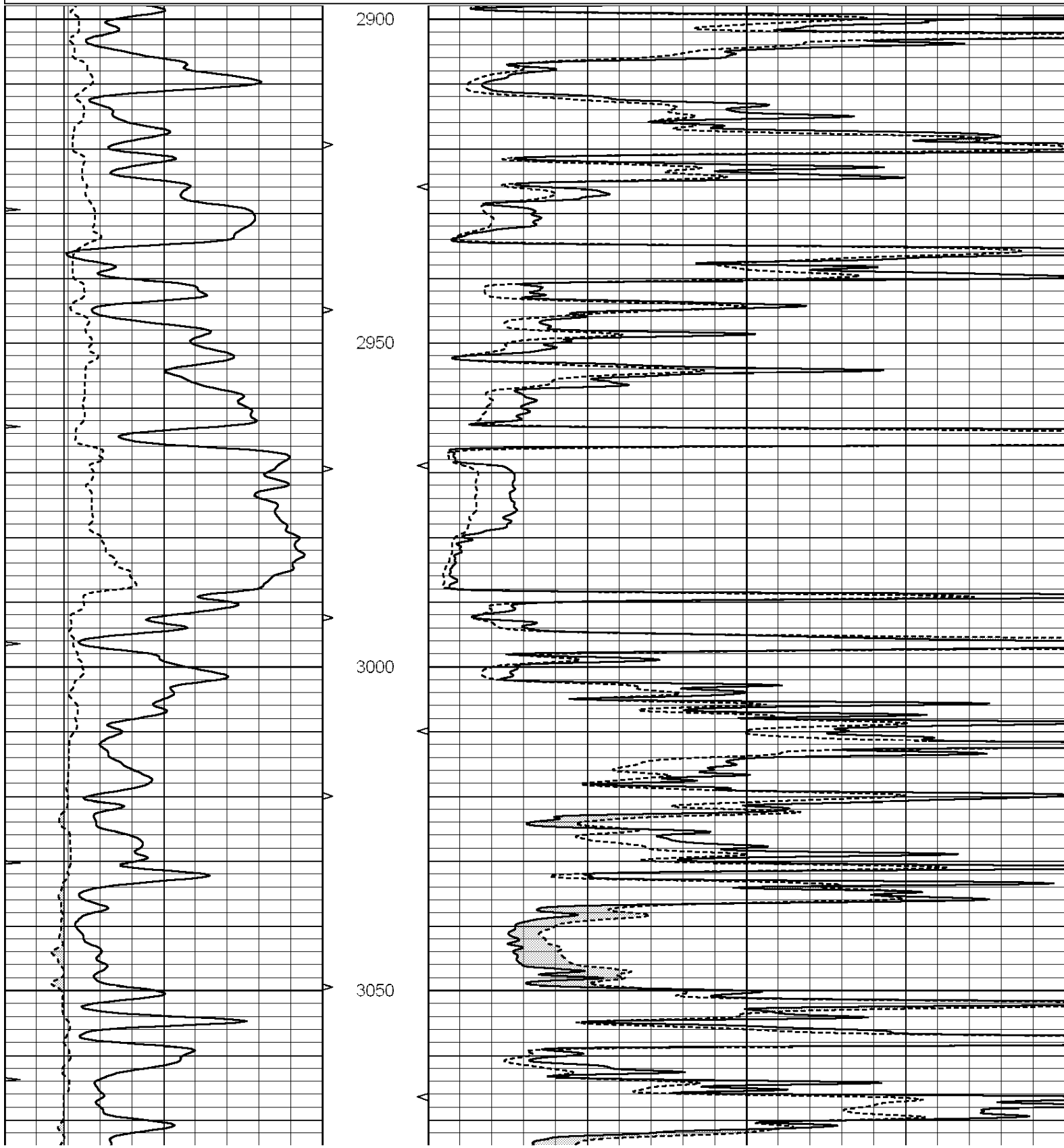
THANK YOU FOR USING "NABORS" HAYS, KANSAS (785) 628-6395
DIRECTIONS
SCHOENCHEN, KS. & HWY 183, S. ON 183 1 MILE PAST COUNTY LINE, 3W., N. INTO

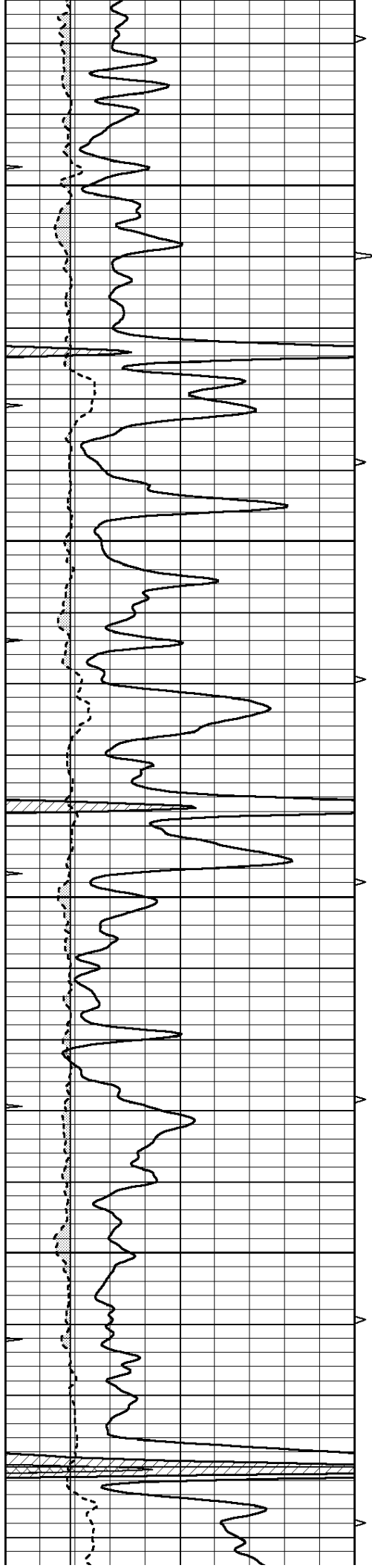


MAIN SECTION

Database File: 011668ddn.db
 Dataset Pathname: pass6.3
 Presentation Format: micro
 Dataset Creation: Mon Sep 09 19:54:25 2013
 Charted by: Depth in Feet scaled 1:240

0	GAMMA RAY (GAPI)	150	ABHV	0	MEL1.5 (Ohm-m)	40
6	CALIPER (in)	16	10 (ft3)	0	MEL2.0 (Ohm-m)	40
0	MINMK	20	TBHV			
			0 (ft3)	10		



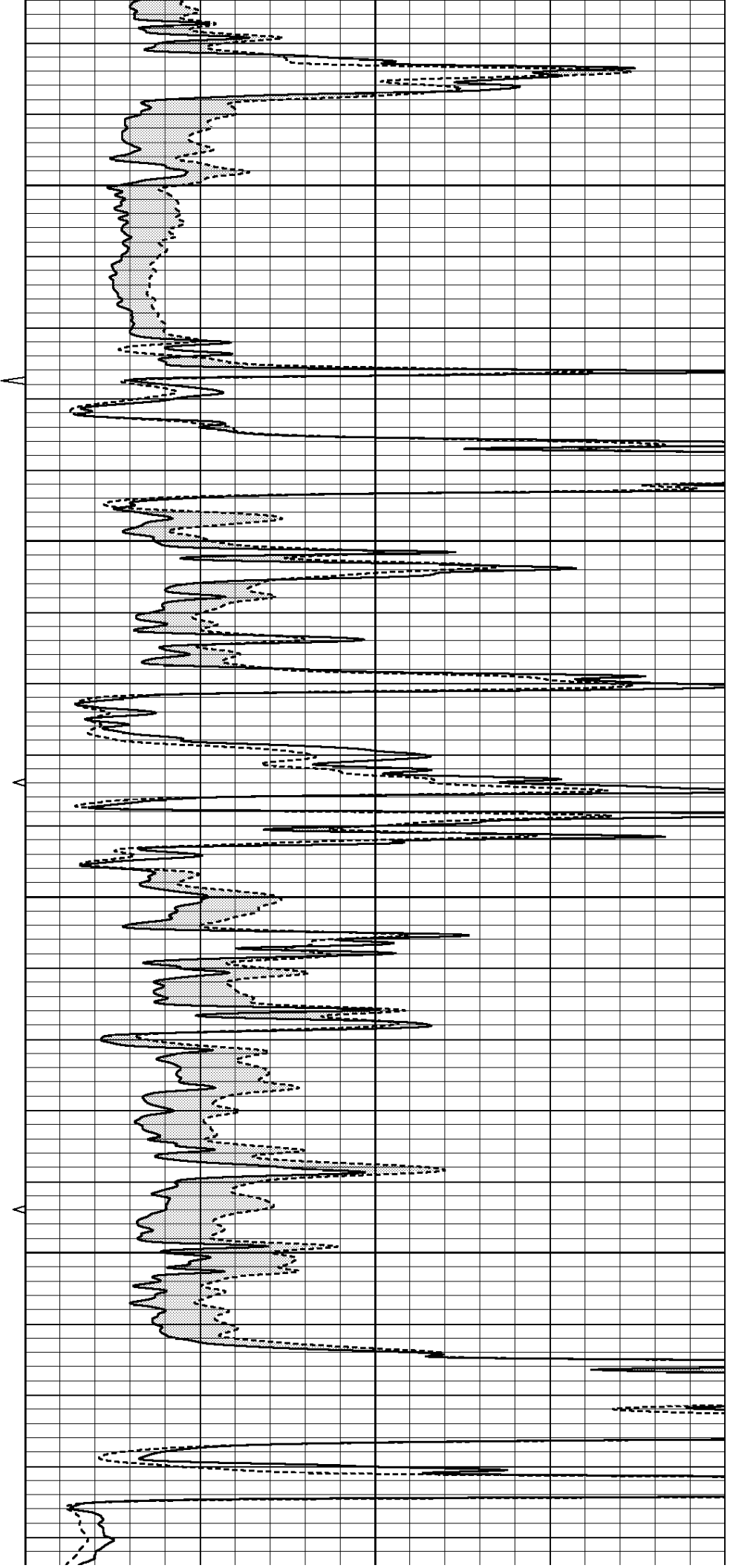


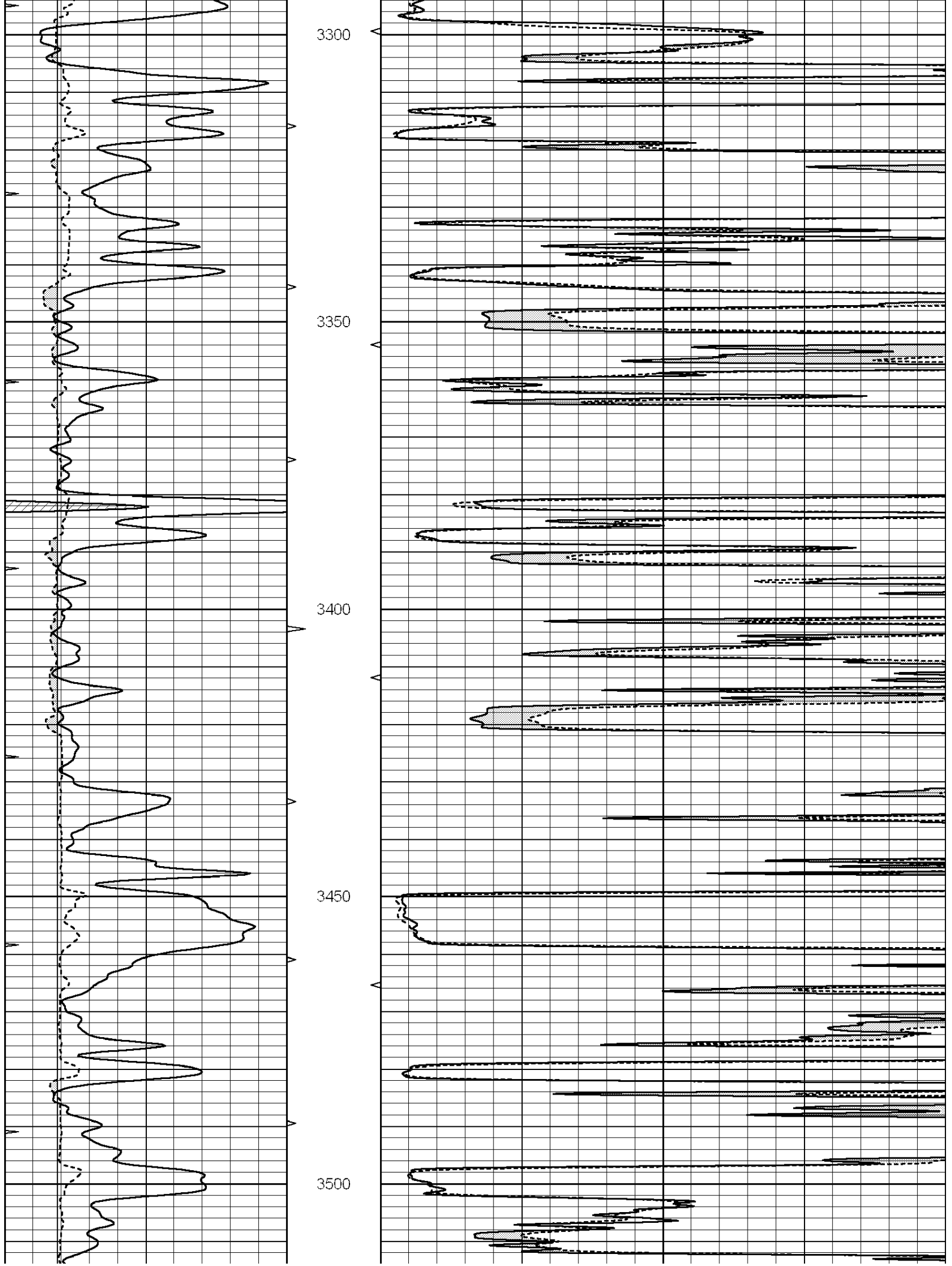
3100

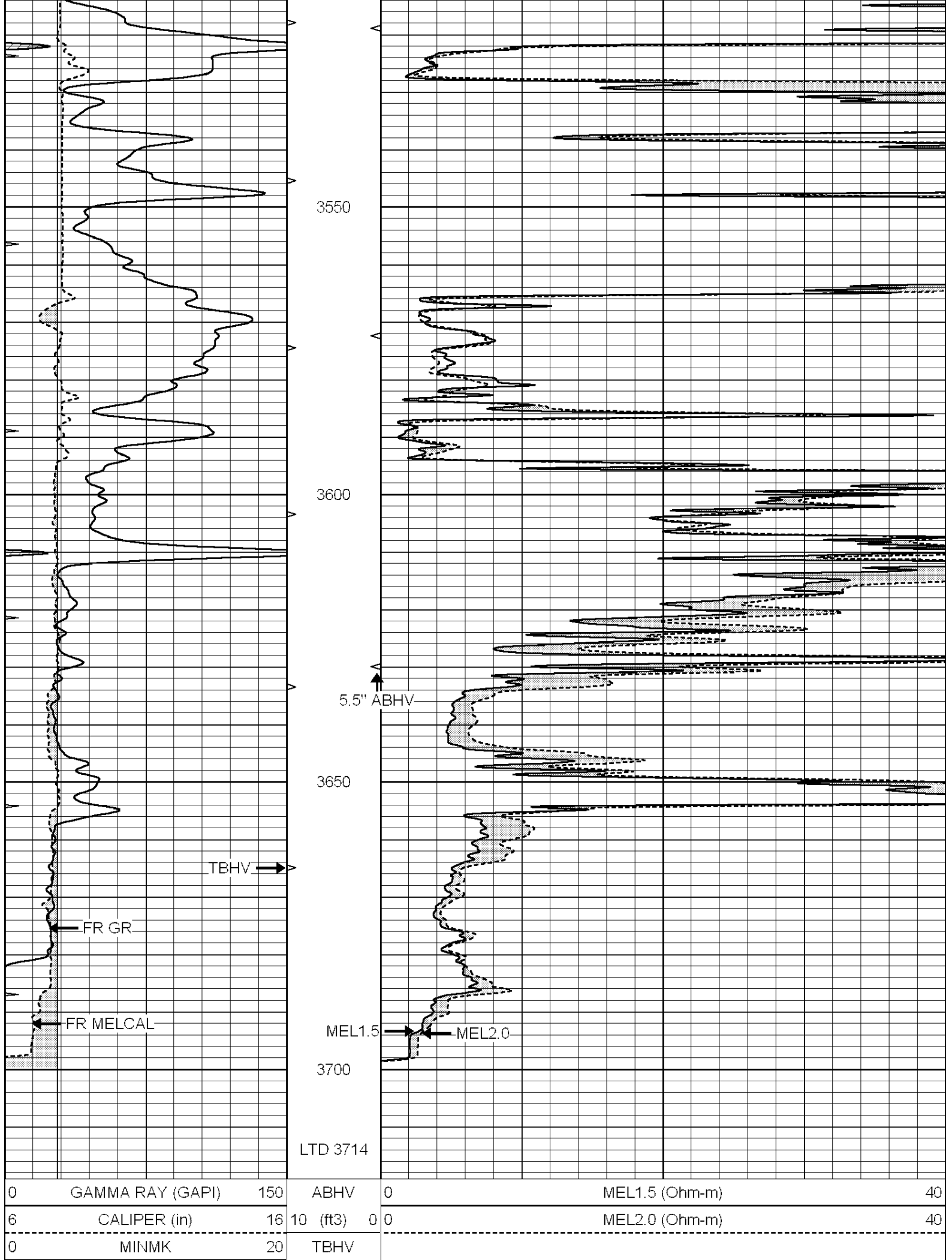
3150

3200

3250







LTD 3714

0	GAMMA RAY (GAPI)	150	ABHV	0	MEL1.5 (Ohm-m)	40
6	CALIPER (in)	16	10 (ft3)	0 0	MEL2.0 (Ohm-m)	40
0	MINMK	20	TBHV			

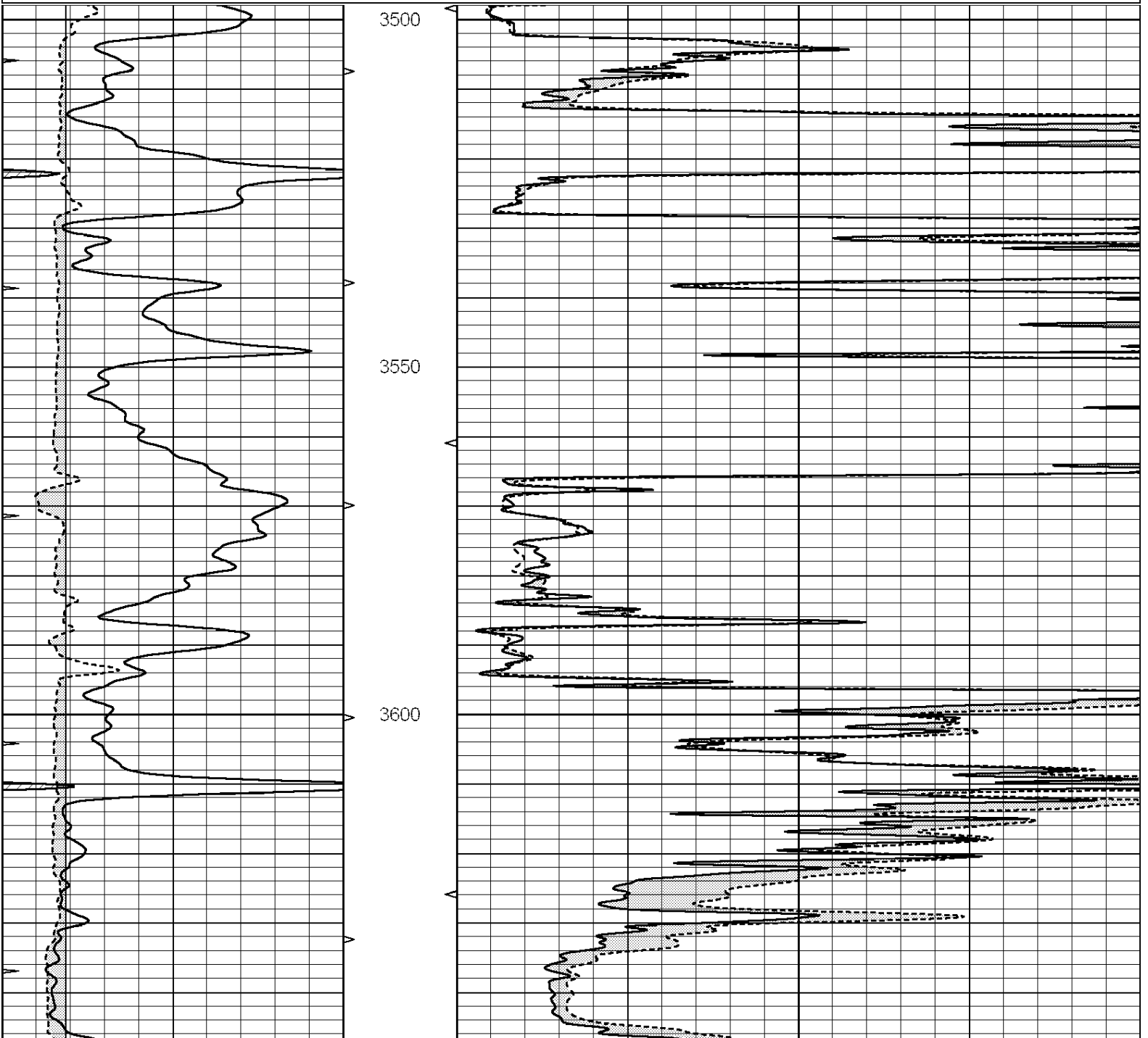


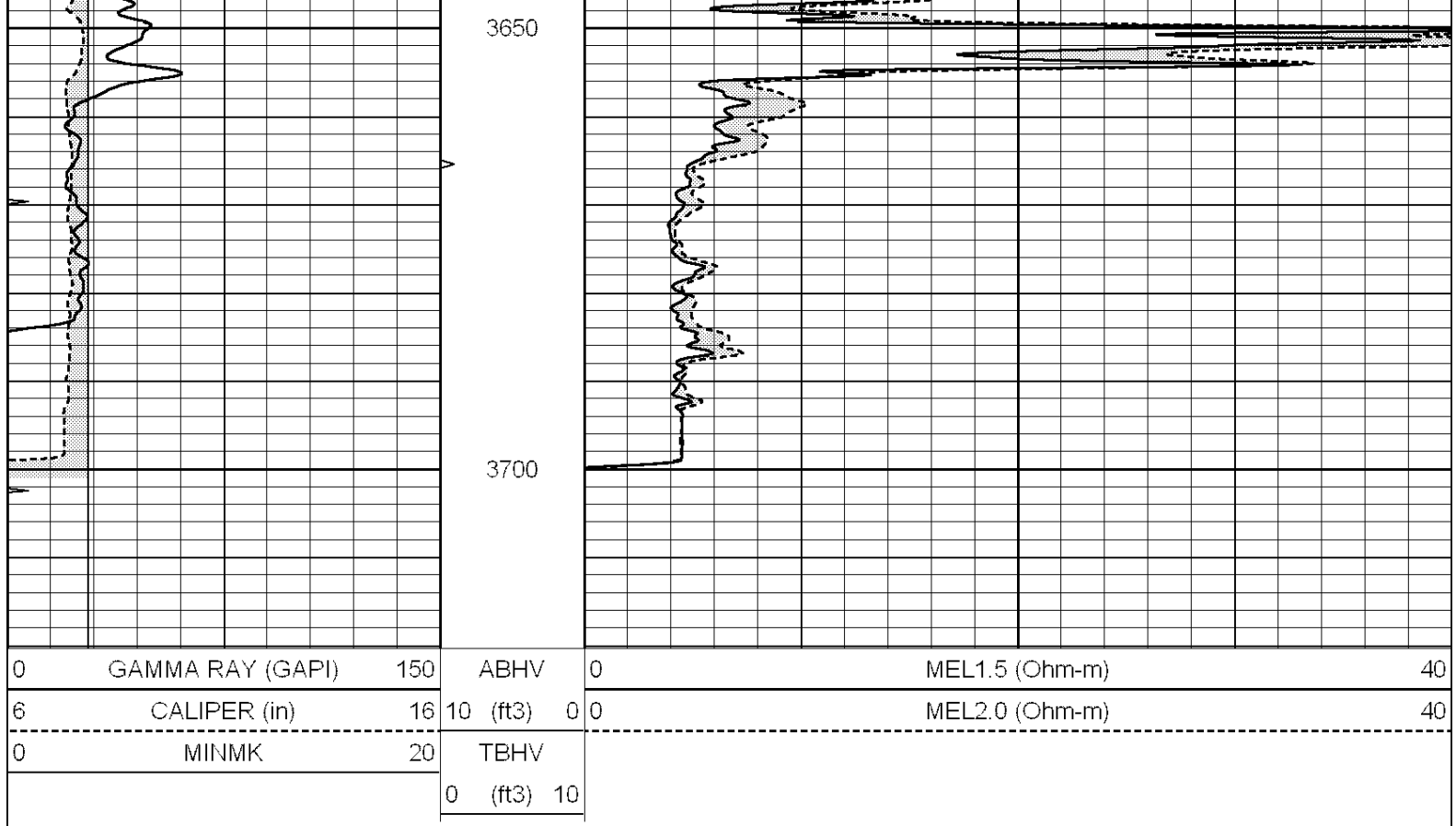
**COMPLETION
& PRODUCTION
SERVICES CO.**

REPEAT SECTION

Database File: 011668ddn.db
 Dataset Pathname: pass5.2
 Presentation Format: micro
 Dataset Creation: Mon Sep 09 19:06:33 2013
 Charted by: Depth in Feet scaled 1:240

0	GAMMA RAY (GAPI)	150	ABHV	0	MEL1.5 (Ohm-m)	40
6	CALIPER (in)	16	10 (ft3)	0	MEL2.0 (Ohm-m)	40
0	MINMK	20	TBHV			
			0 (ft3)	10		





Calibration Report

Database File: 011668ddn.db
 Dataset Pathname: pass6.3
 Dataset Creation: Mon Sep 09 19:54:25 2013

MICRO Calibration Report

Serial Number:	MICRO5	
Tool Model:	PROBE	
Performed:	Thu Aug 22 06:51:09 2013	
Caliper Calibration:	Gain=3.502	Offset=-6.179
References	Low Cal	High Cal
Readings	8.200	15.000
	4.106	6.048
1.5" Calibration:	Gain=42.000	Offset=-1.000
References	Low Cal	High Cal
Readings	0.000	20.000
	0.015	1.005
2" Calibration:	Gain=58.000	Offset=-1.500
References	Low Cal	High Cal
Readings	0.000	20.000
	0.009	0.910

Gamma Ray Calibration Report

Serial Number:	GR3	
Tool Model:	OPEN	
Performed:	Sat Sep 07 19:39:53 2013	
Calibrator Value:	200.0	GAPI
Background Reading:	3.0	one

Background Reading:	0.0	cps
Calibrator Reading:	186.0	cps
Sensitivity:	1.7000	GAPI/cps