



Pioneer Energy Services

Dual Compensated Porosity Log

15-101-22,455-00-00

API No.

Company **Larson Engineering, Inc.**
 Well **Eugene #1-27**
 Field **Wildcat**
 County **Lane** State **Kansas**

Location **E/2 SE SW SW
 330' FSL & 1060' FWL**
 Sec: **27** Twp: **18S** Rge: **28W**

Other Services
 DIL
 MEL

Permanent Datum **Ground Level** Elevation **2724**
 Log Measured From **Kelly Bushing** 7 Ft. Above Perm. Datum
 Drilling Measured From **Kelly Bushing**

Elevation
 K.B. 2731
 D.F. G.L. 2724

Date	8/24/2013	
Run Number	One	
Type Log	CNL / CDL	
Depth Driller	4625	
Depth Logger	4626	
Bottom Logged Interval	4605	
Top Logged Interval	3600	
Type Fluid In Hole	Chemical	
Salinity, PPM CL	2500	
Density Level	9.1	
Level	Full	
Max. Rec. Temp. F	122	
Operating Rig Time	4 Hours	
Equipment -- Location	15 Hays	
Recorded By	D Kerr	
Witnessed By	Vern Schrag	

Borehole Record				Casing Record			
Run No.	Bit	From	To	Size	Wgt.	From	To
1	12.25	00	272	8.625	24#	00	272
2	7.875	272	4625				

<<< Fold Here >>>

All interpretations are opinions based on inferences from electrical or other measurements and we cannot and do not guarantee the accuracy or correctness of any interpretation, and we shall not, except in the case of gross or willful negligence on our part, be liable or responsible for any loss, costs, damages, or expenses incurred or sustained by anyone resulting from any interpretation made by any of our officers, agents or employees. These interpretations are also subject to our general terms and conditions set out in our current Price Schedule.

Comments

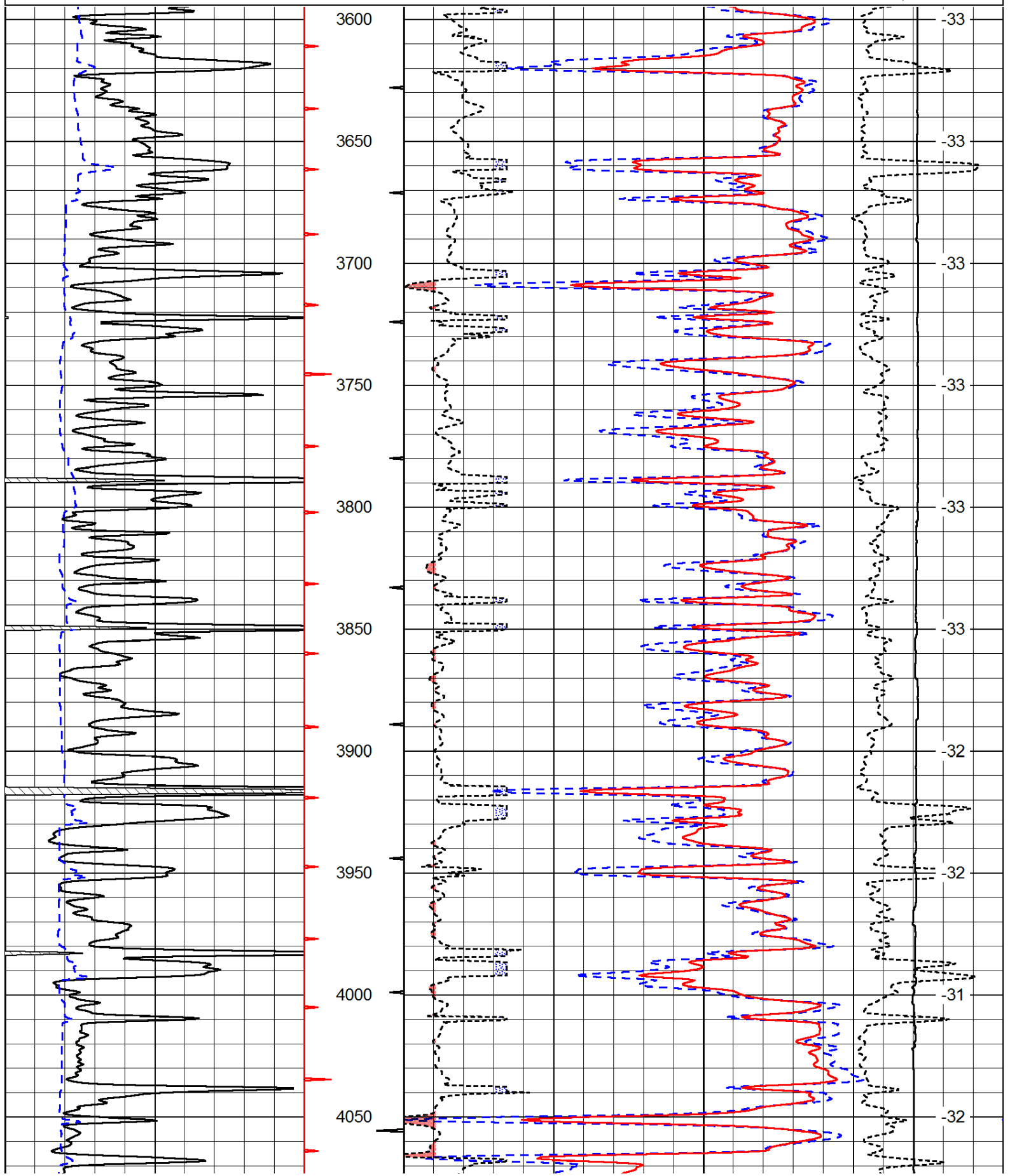
Thank you for using Pioneer Energy Services
 www.pioneerres.com
 785 625 3858

Dighton KS, 2 East to Mustang RD,
 2 South to 130 RD, 1 1/4 East, North Into

Database File: c:\warrior\data\larson_eugene #1-27\larson_eugene_1_27hd.db
 Dataset Pathname: DIL\larstk
 Presentation Format: cdl
 Dataset Creation: Sat Aug 24 14:55:03 2013
 Charted by: Depth in Feet scaled 1:600

0	Gamma Ray	150
6	Caliper (GAPI)	16

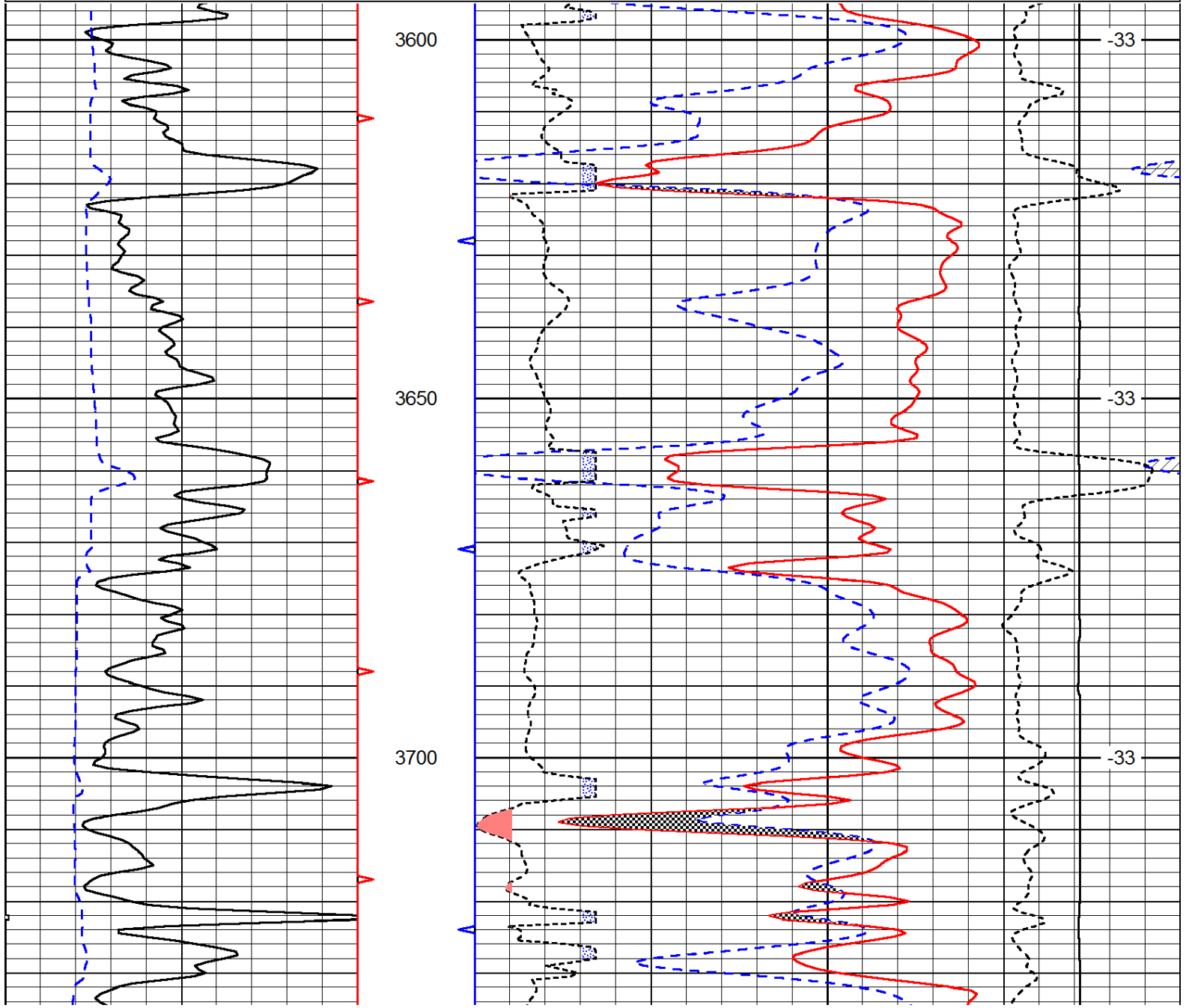
30	Compensated Density		-10
2	Bulk Density		3
15000	Line Tension		0
2.625	DGA	3.425	-0.25
			Correction
			LSPD

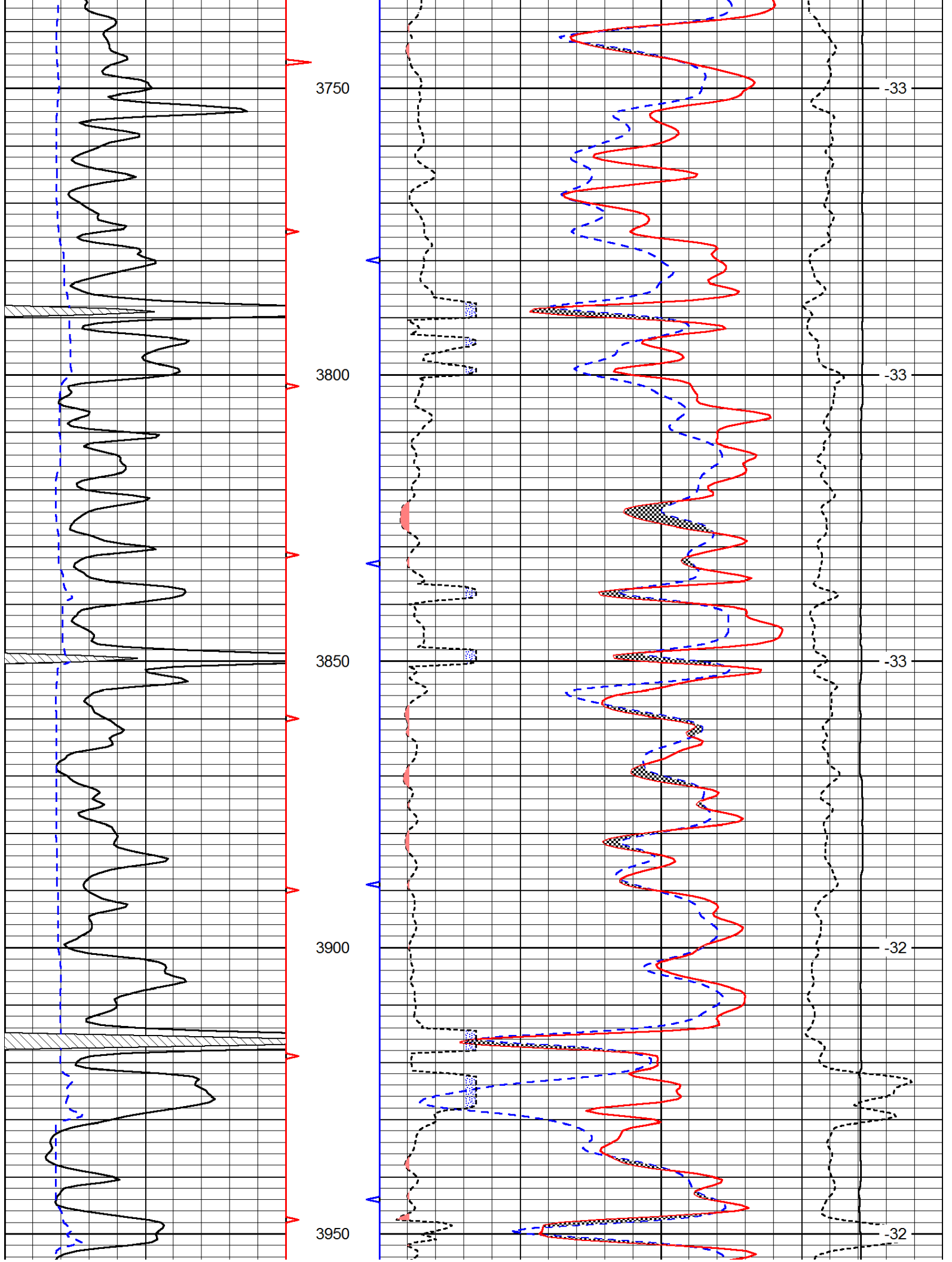


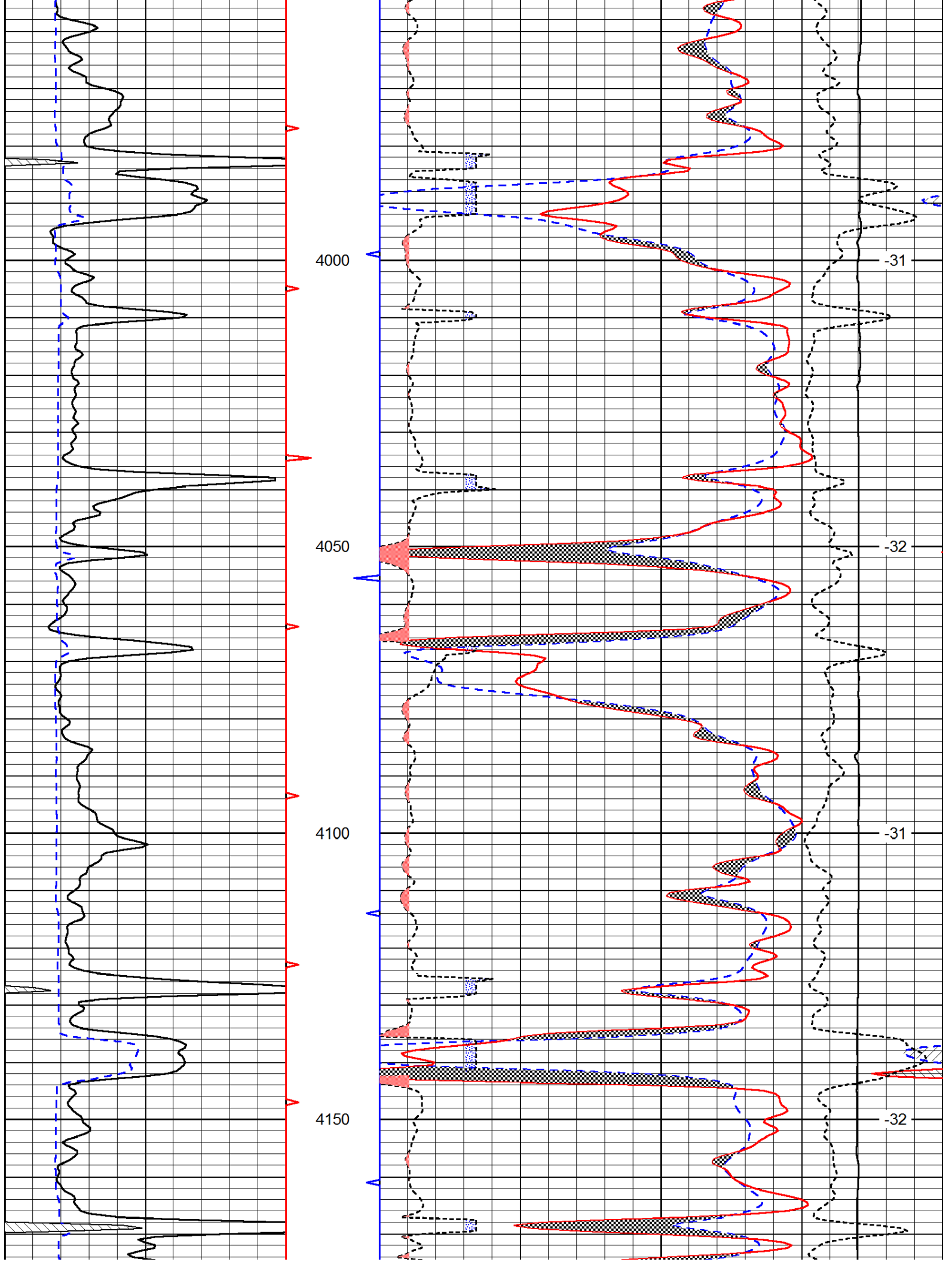
0	Gamma Ray	150	30	Compensated Density	-10
6	Caliper (GAPI)	16	2	Bulk Density	3
			15000	Line Tension	0
			2.625	DGA	3.425
			-0.25	Correction	0.25
LSPD					

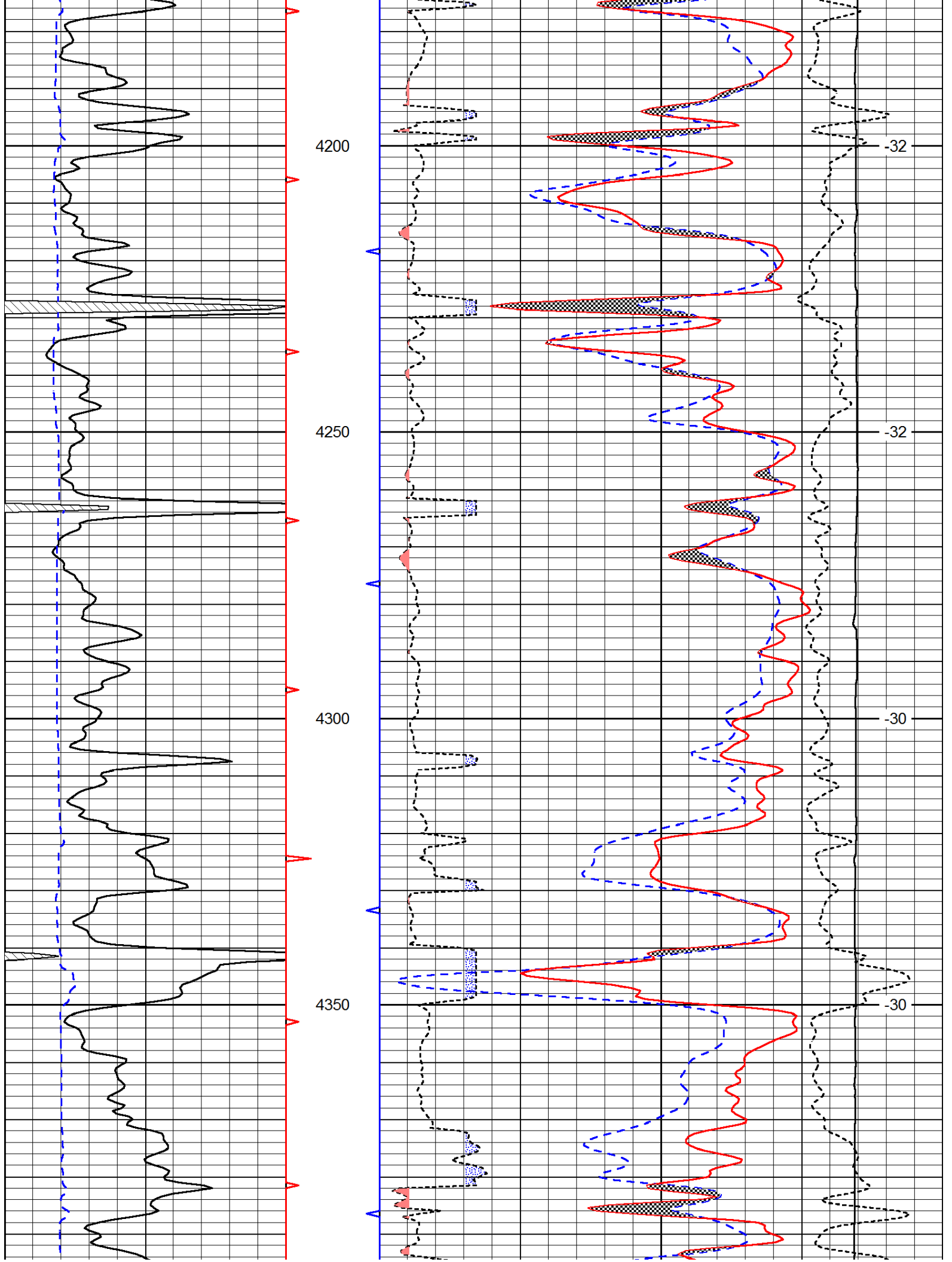
Database File: c:\warrior\data\larson_eugene #1-27\larson_eugene_1_27hd.db
 Dataset Pathname: DIL\larstk
 Presentation Format: cndlspec
 Dataset Creation: Sat Aug 24 14:55:03 2013
 Charted by: Depth in Feet scaled 1:240

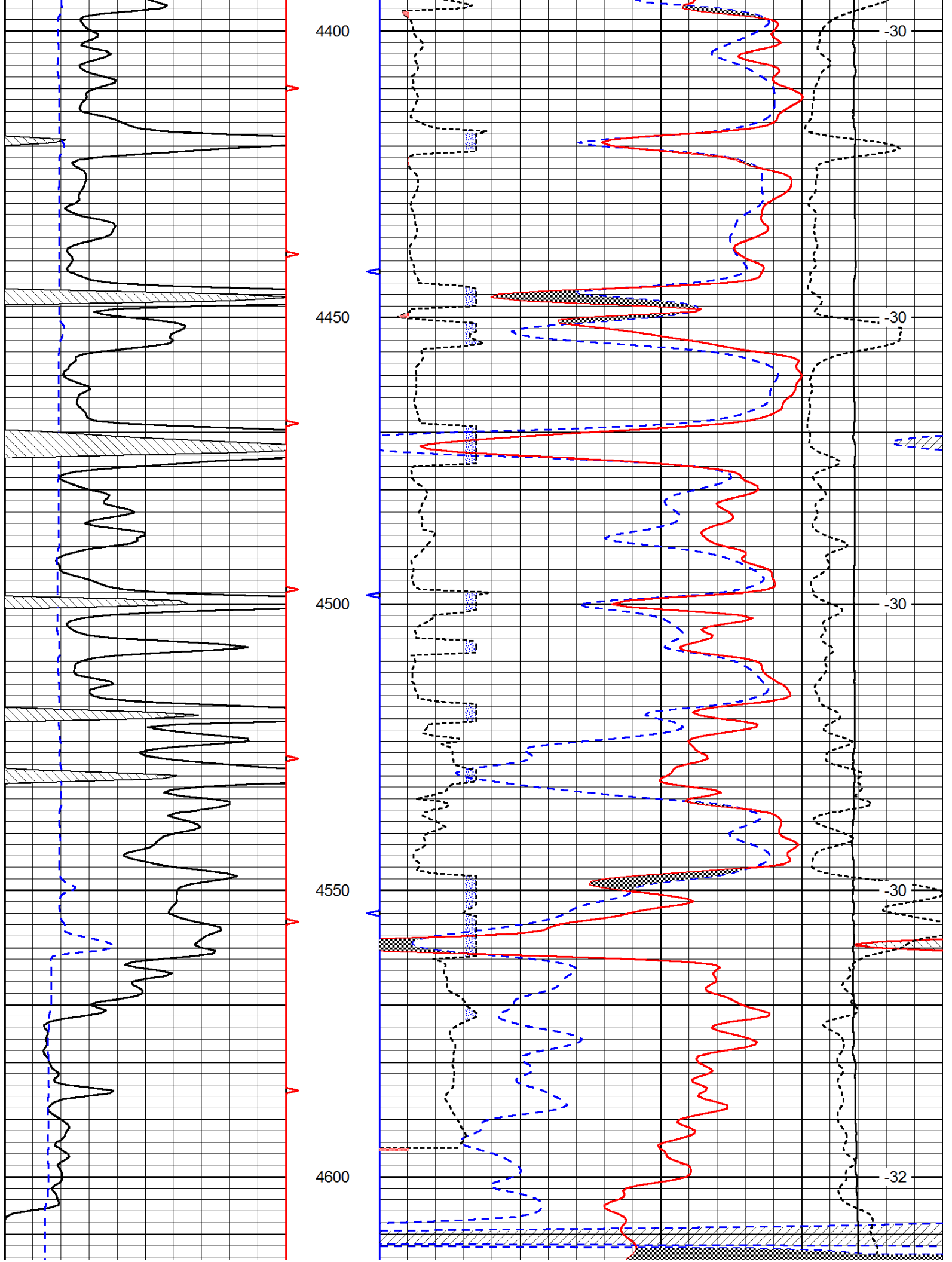
0	Gamma Ray	150	30	Compensated Neutron (Limestone)	-10
6	Caliper (GAPI)	16	30	Compensated Density (Limestone)	-10
			2.625	DGA	3.425
			-0.25	Correction	0.25
			15000	Line Tension	0
LSPD					

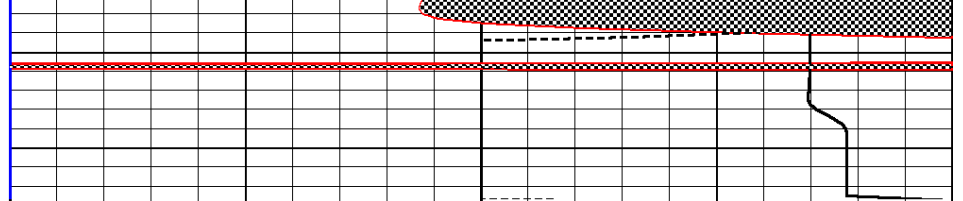
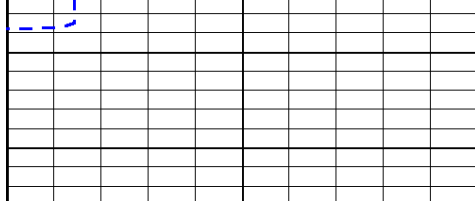












0	Gamma Ray	150
---	-----------	-----

6	Caliper (GAPI)	16
---	----------------	----

30	Compensated Neutron (Limestone)	-10
----	---------------------------------	-----

30	Compensated Density (Limestone)	-10
----	---------------------------------	-----

2.625	DGA	3.425	-0.25	Correction	0.25
-------	-----	-------	-------	------------	------

15000	Line Tension	0
-------	--------------	---

LSPD
