



Pioneer Energy Services

Dual Induction Log

15-101-22,455-00-00

API No.

Company Larson Engineering, Inc.

Well Eugene #1-27

Field Wildcat

County Lane State Kansas

Location E/2 SE SW SW
330' FSL & 1060' FWL

Sec: 27 Twp: 18S Rge: 28W

Permanent Datum Ground Level Elevation 2724

Log Measured From Kelly Bushing 7 Ft. Above Perm. Datum

Drilling Measured From Kelly Bushing

Other Services
CNL/CDL
MEL

Elevation
K.B. 2731
D.F.
G.L. 2724

Date 8/24/2013

Run Number One

Depth Driller 4625

Depth Logger 4626

Bottom Logged Interval 4625

Top Log Interval 250

Casing Driller 8.625 @ 272

Casing Logger 269

Bit Size 7.875

Type Fluid in Hole Chemical

Salinity,ppm CL 2500

Density / Viscosity 9.1 55

pH / Fluid Loss 10.5 8.0

Source of Sample Flowline

Rm @ Meas. Temp 0.52 @ 86

Rmf @ Meas. Temp 0.39 @ 86

Rmc @ Meas. Temp 0.70 @ 86

Source of Rmf / Rmc Charts

Rm @ BHT 0.37 @ 122

Operating Rig Time 4 Hours

Max Rec. Temp. F 122

Equipment Number 15

Location Hays

Recorded By D.Kerr

Witnessed By Vern Schrag

<<< Fold Here >>>

All interpretations are opinions based on inferences from electrical or other measurements and we cannot and do not guarantee the accuracy or correctness of any interpretation, and we shall not, except in the case of gross or willful negligence on our part, be liable or responsible for any loss, costs, damages, or expenses incurred or sustained by anyone resulting from any interpretation made by any of our officers, agents or employees. These interpretations are also subject to our general terms and conditions set out in our current Price Schedule.

Comments

Thank you for using Pioneer Energy Services
www.pioneerenergy.com
 785 625 3858

Dighton KS, 2 East to Mustang RD,
 2 South to 130 RD, 1 1/4 East, North Into

Database File: c:\warrior\data\larson_eugene #1-27\larson_eugene_1_27hd.db
 Dataset Pathname: DIL\larstk
 Presentation Format: dil2in
 Dataset Creation: Sat Aug 24 14:55:03 2013
 Charted by: Depth in Feet scaled 1:600

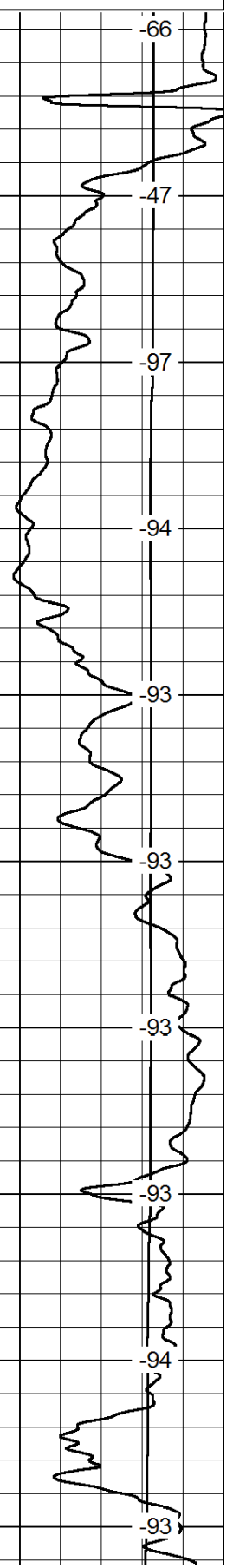
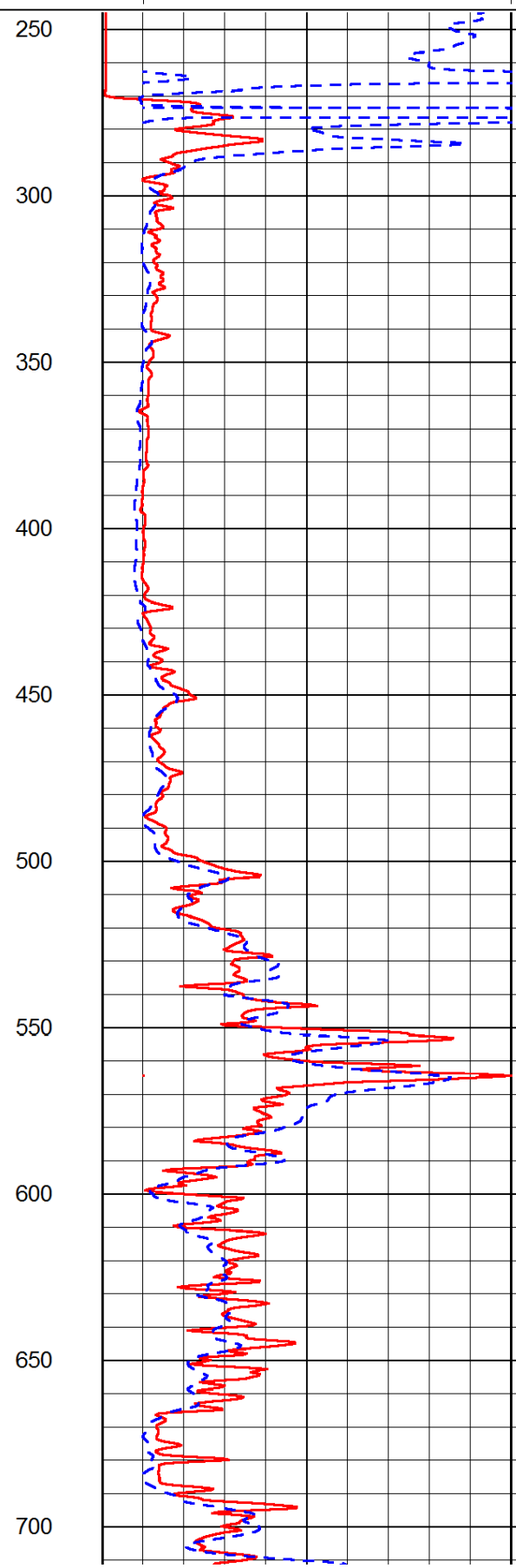
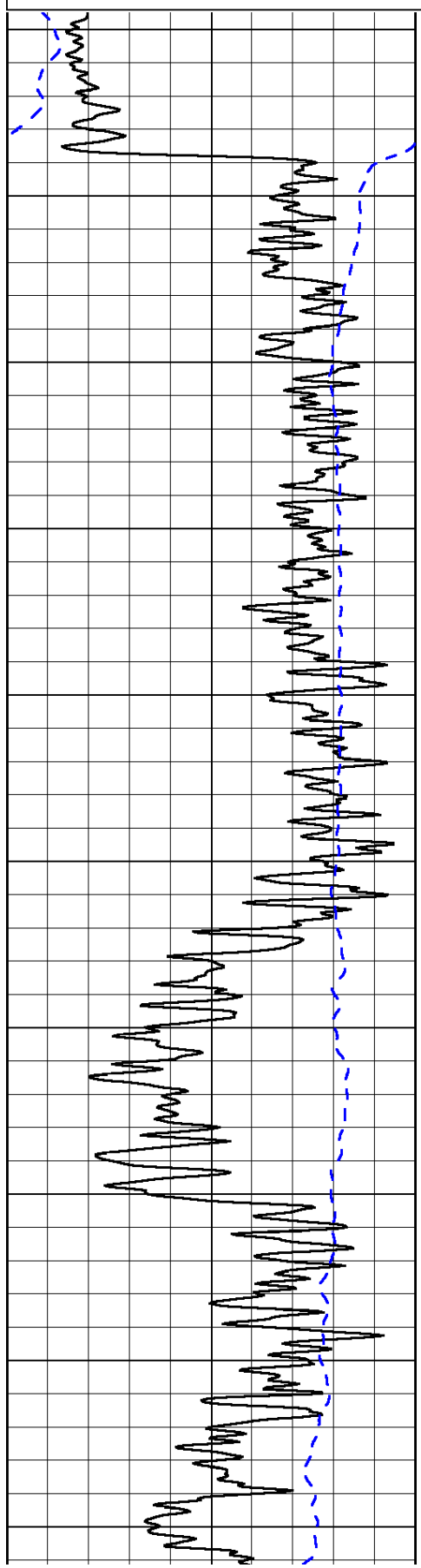
0	Gamma Ray	150
-200	SP (mV)	0

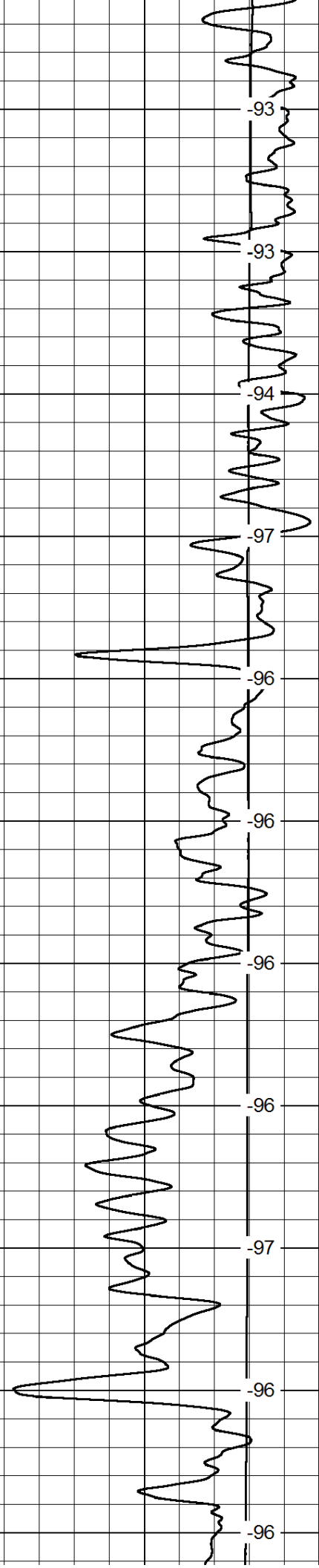
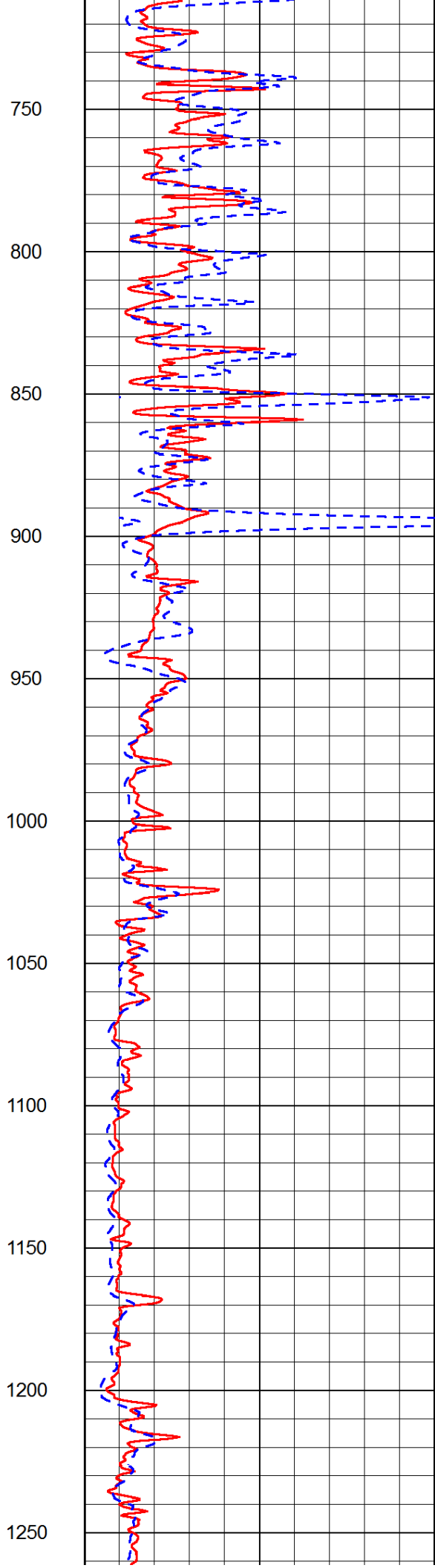
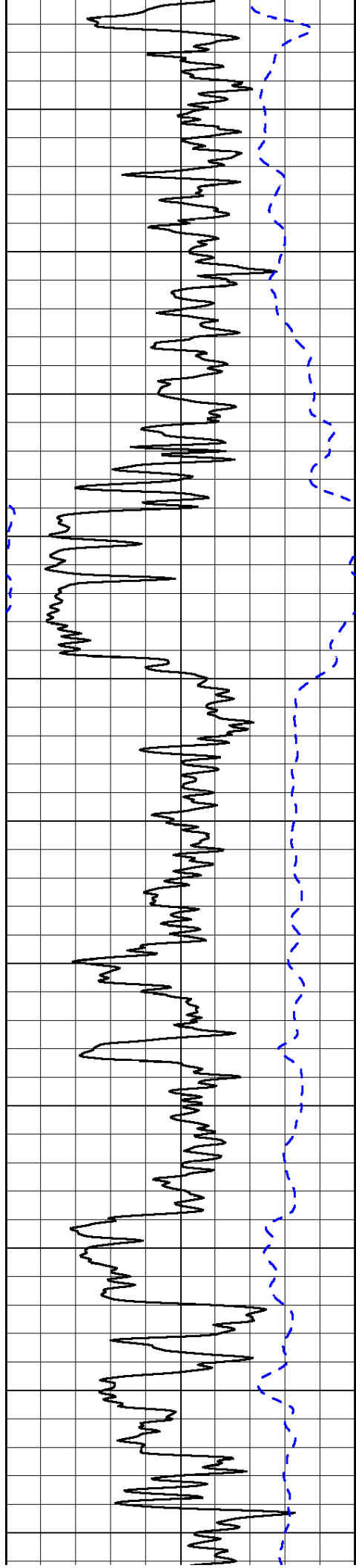
0	Shallow Resistivity	50
0	Deep Resistivity	50

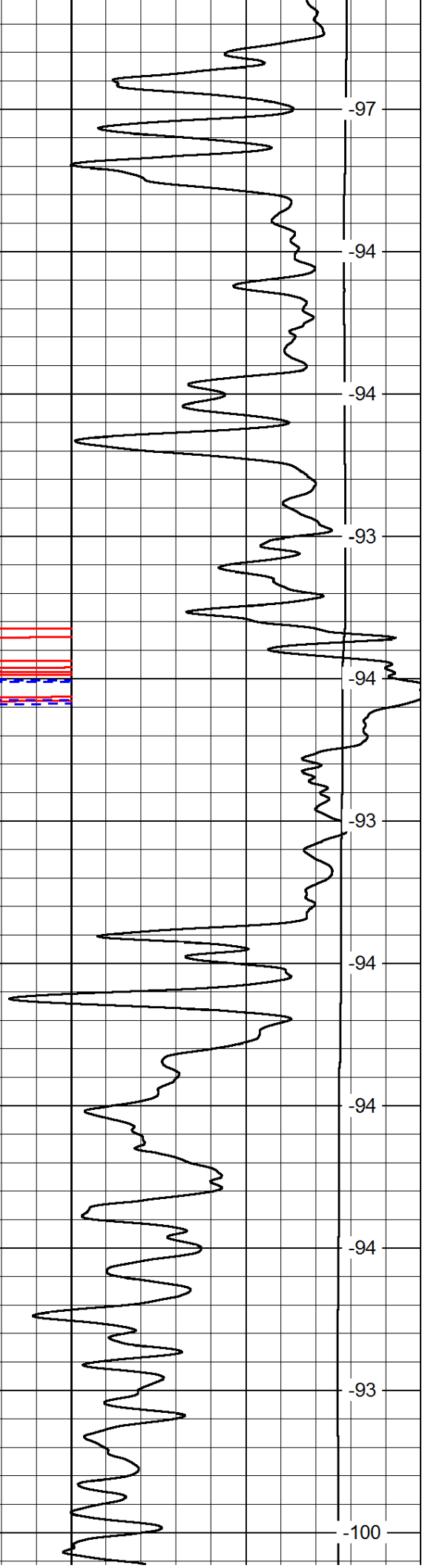
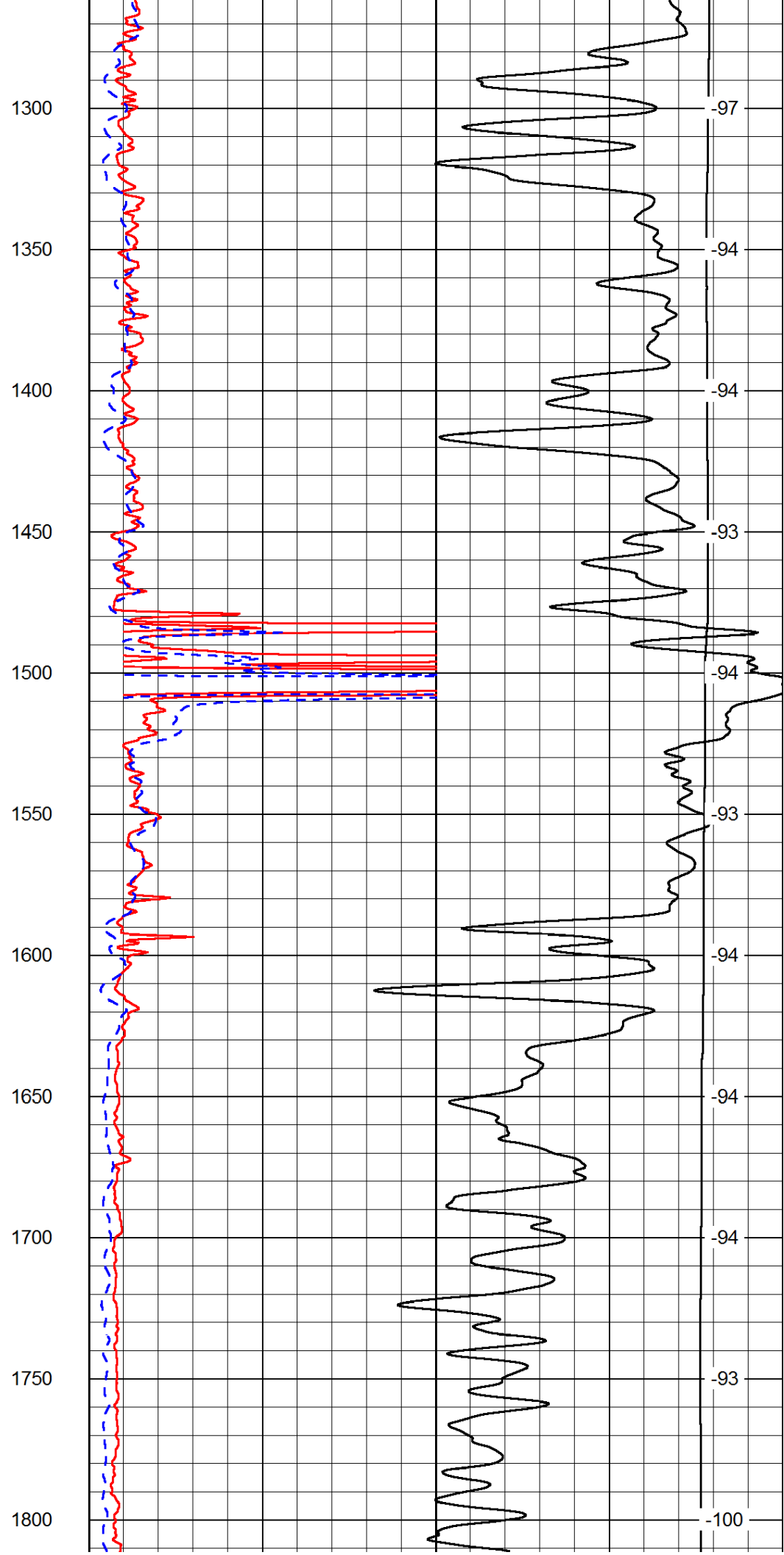
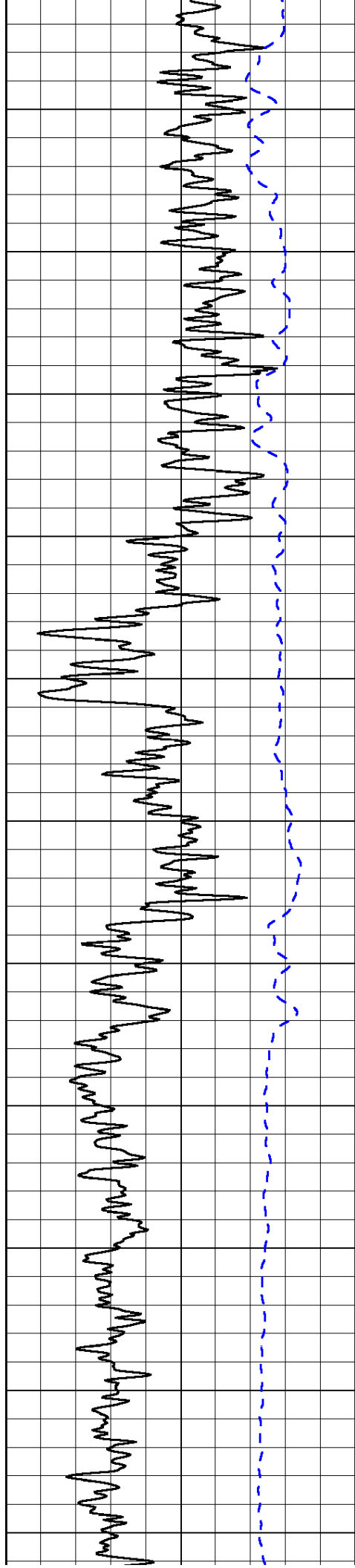
LSPD

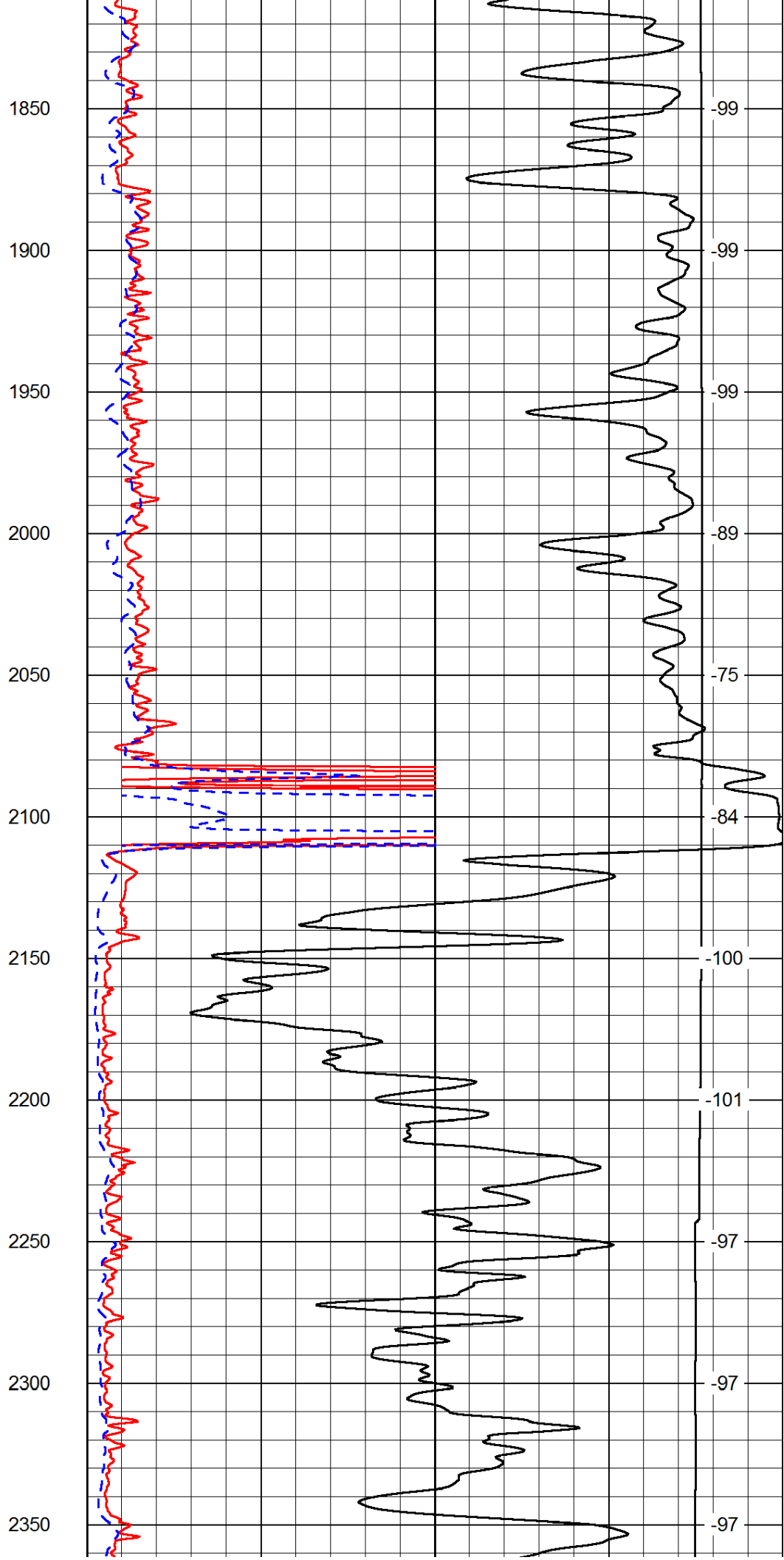
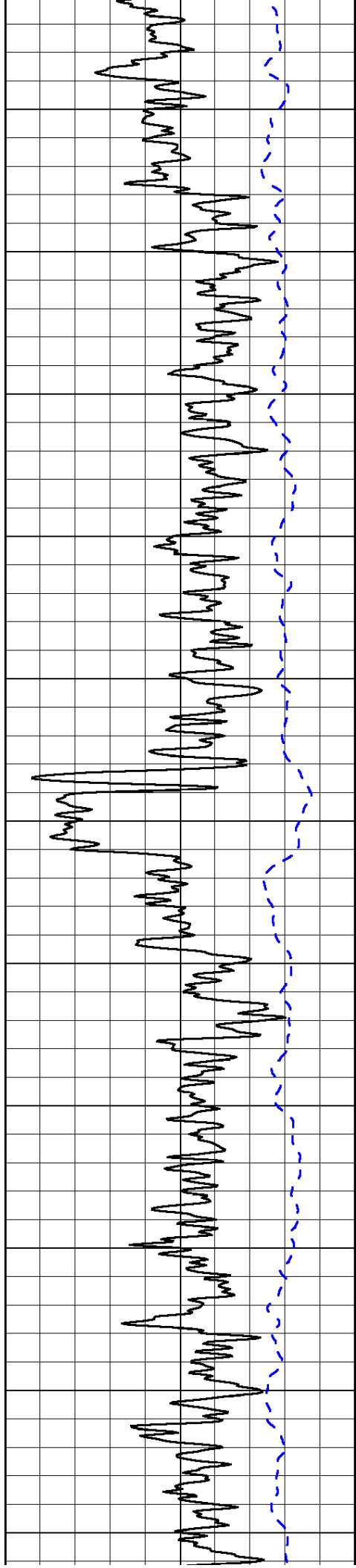
1000	Conductivity	0
15000	Line Tension	0

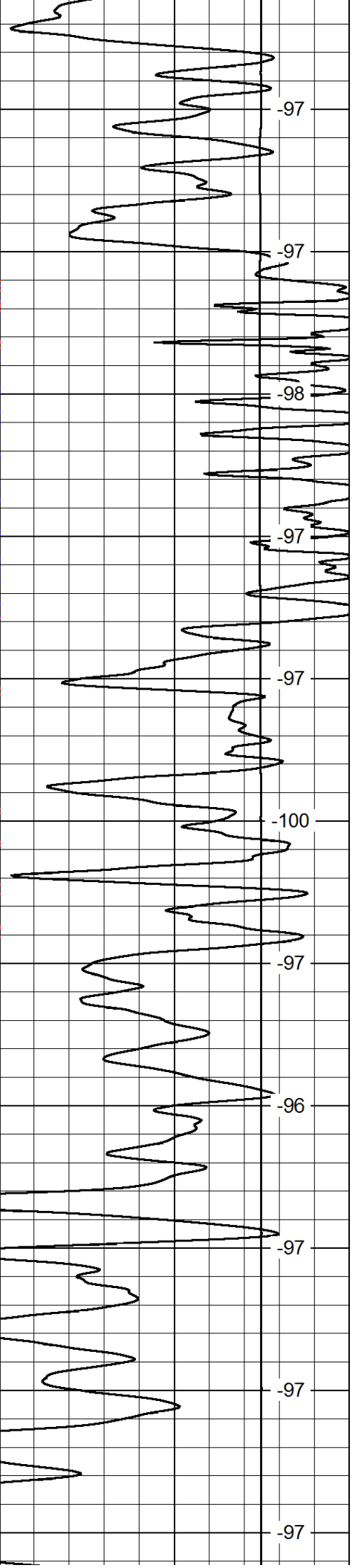
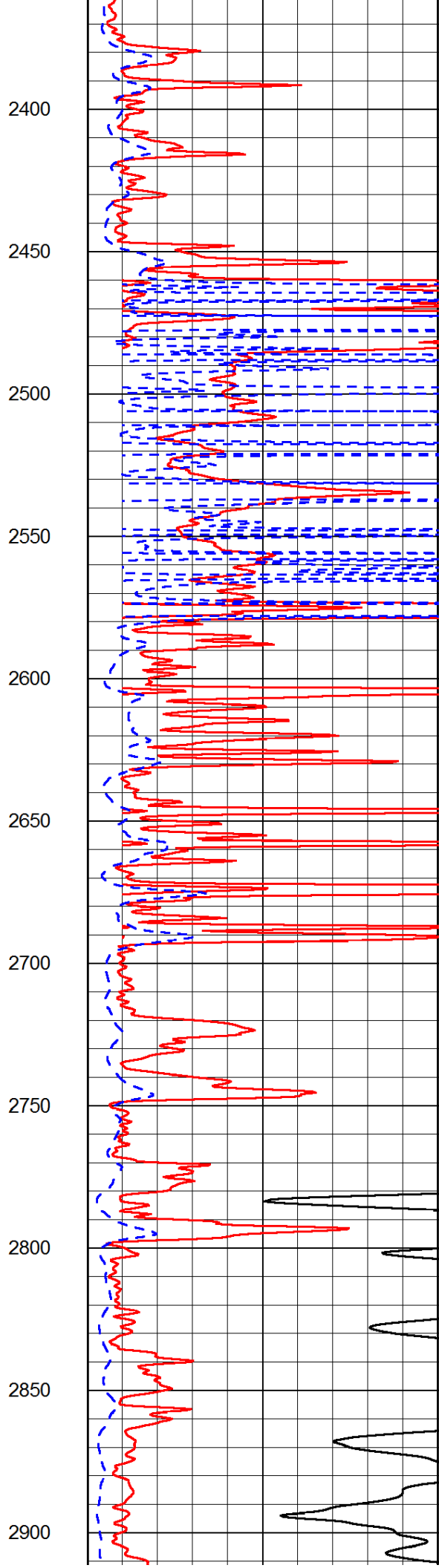
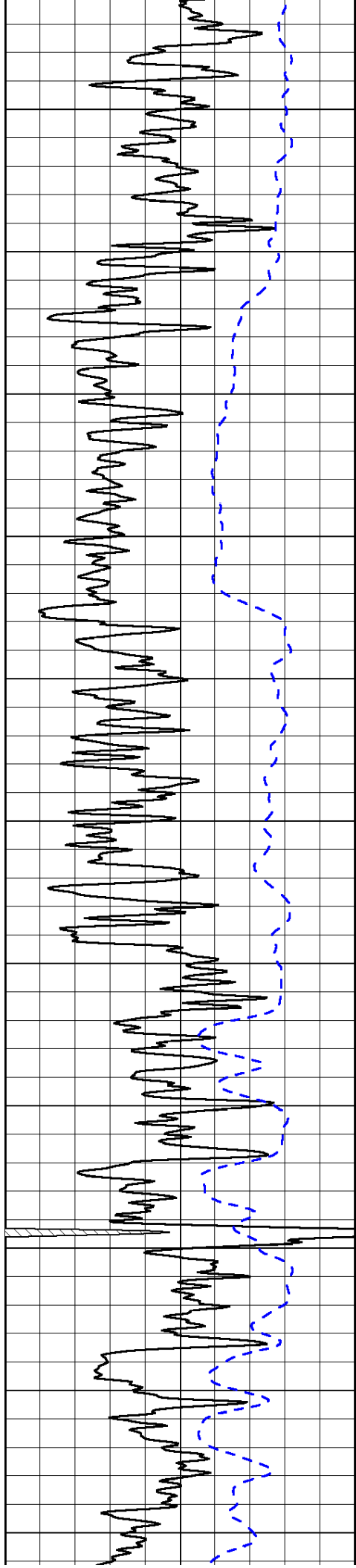
50	Shallow Resistivity	500
50	Deep Resistivity	500

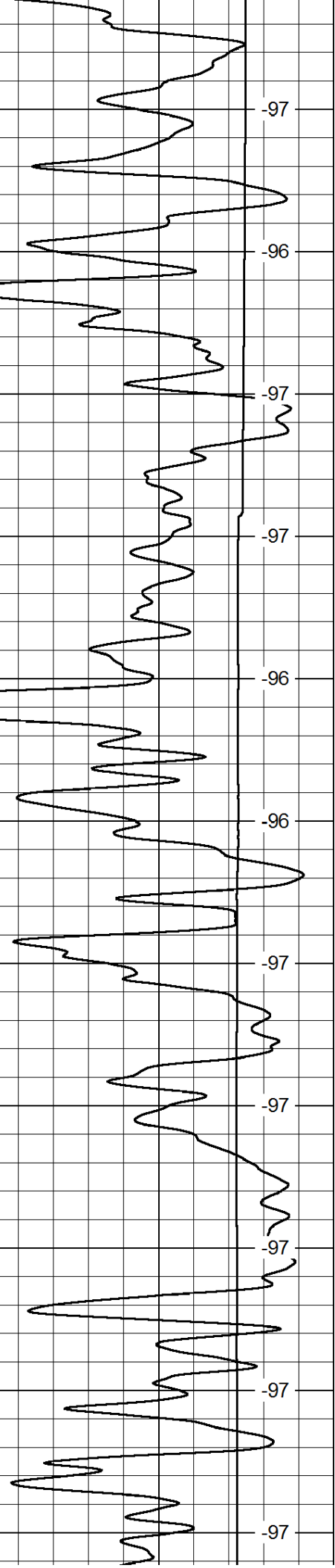
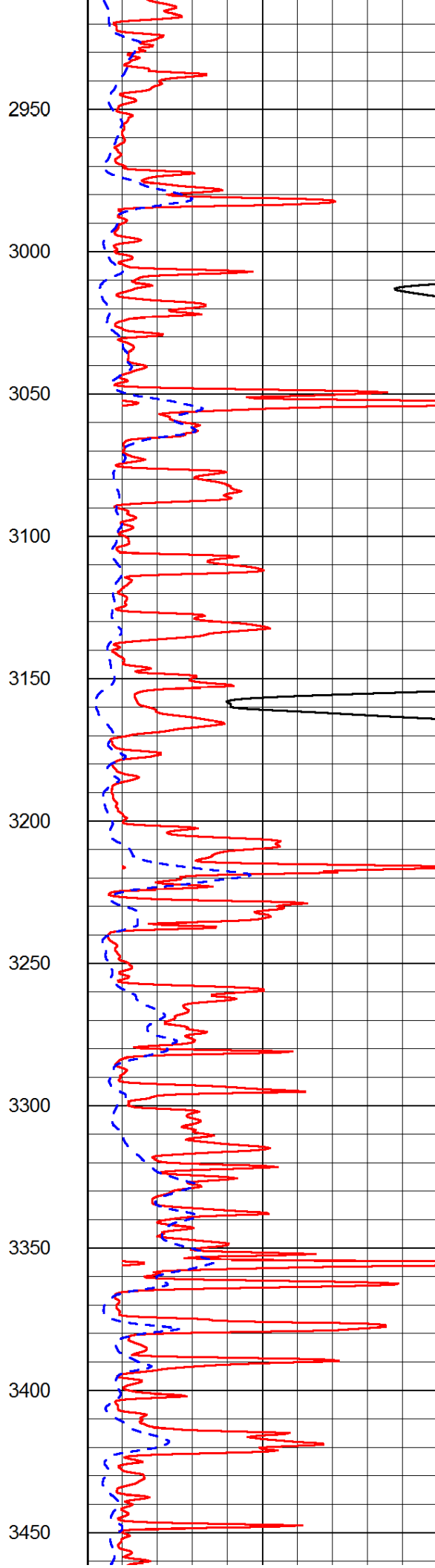
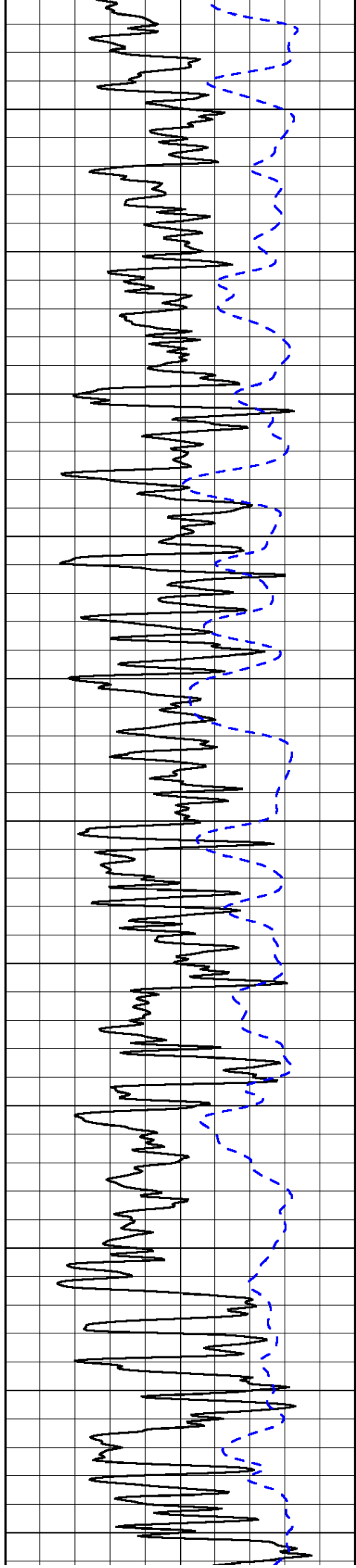


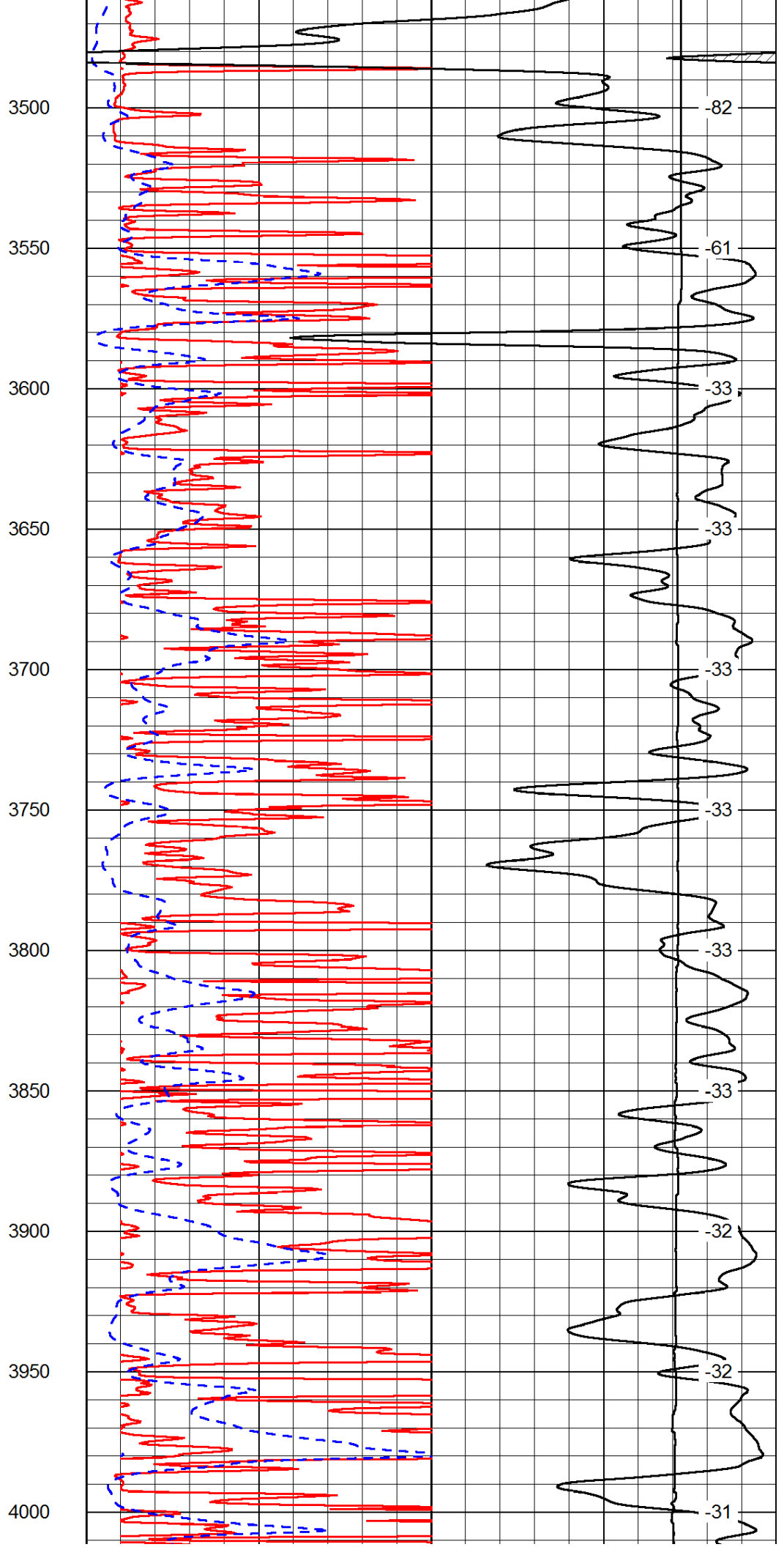
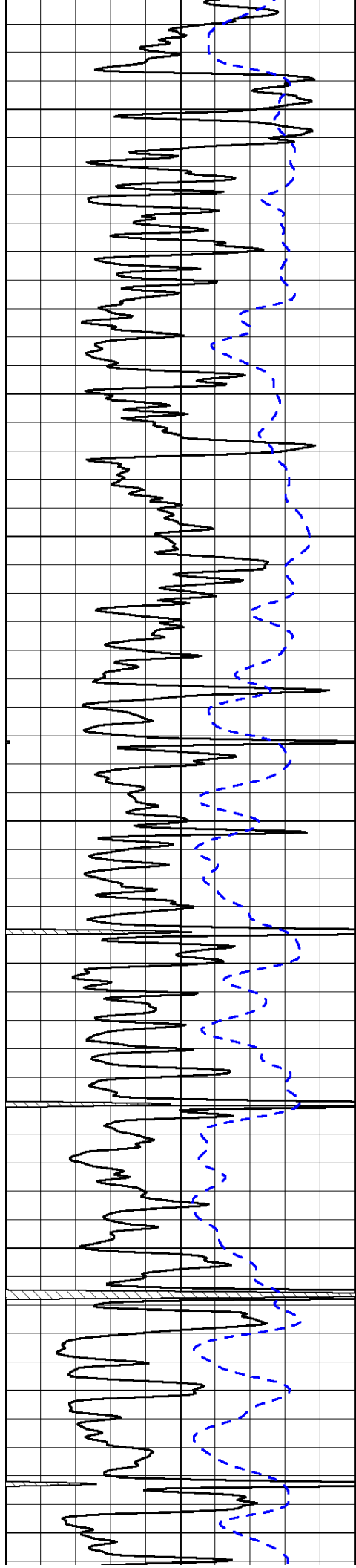


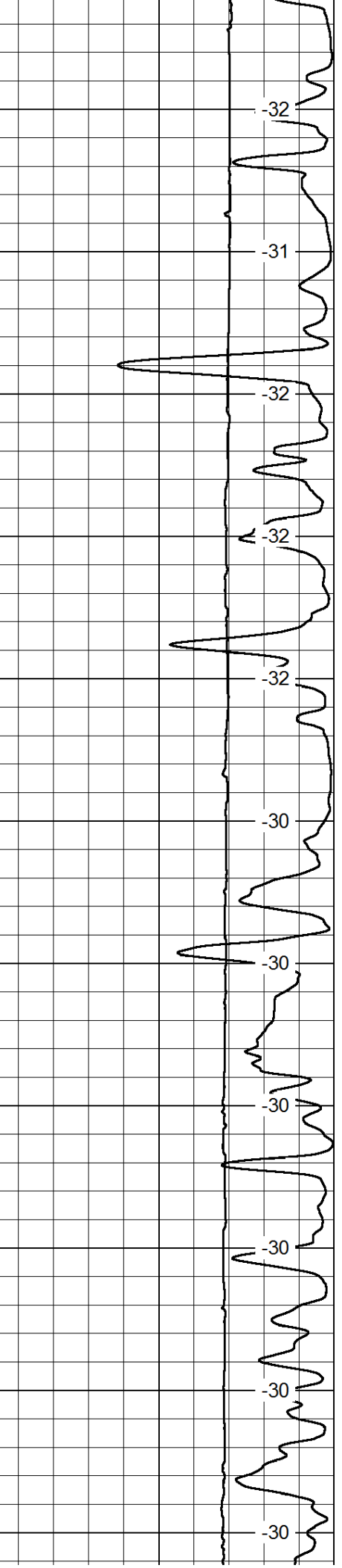
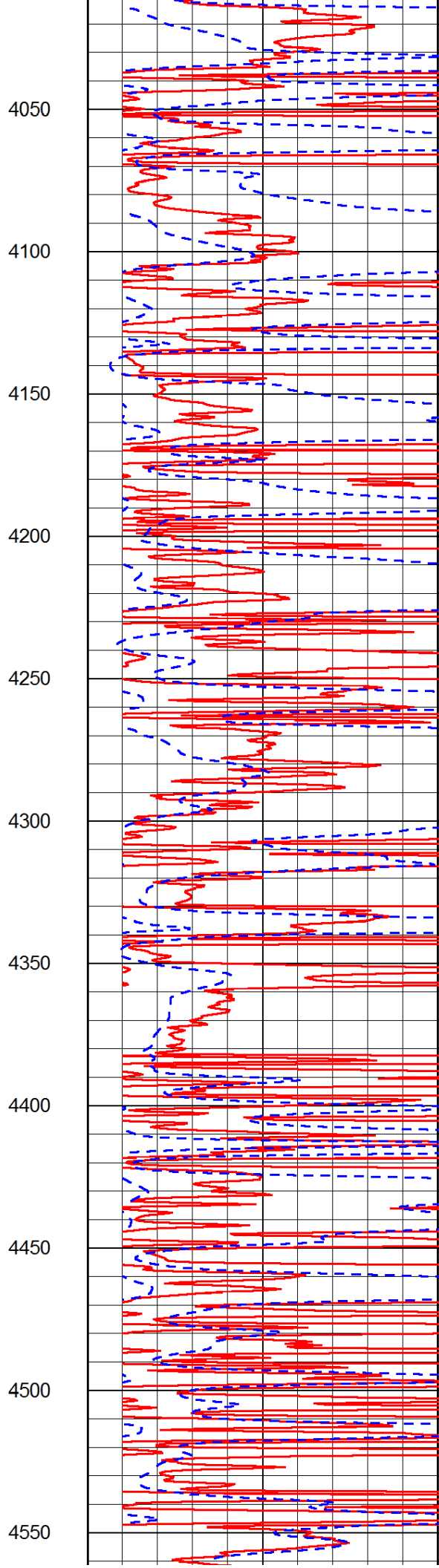
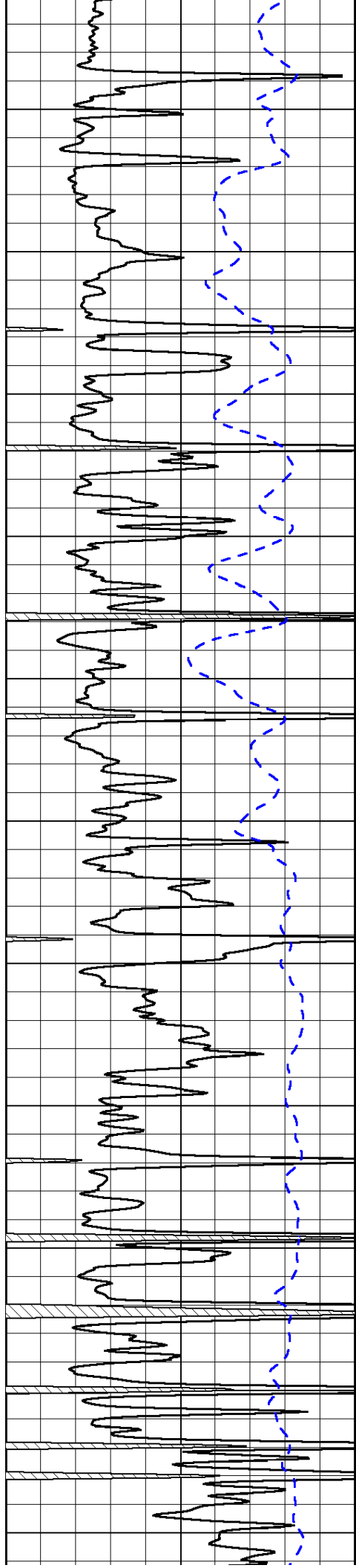


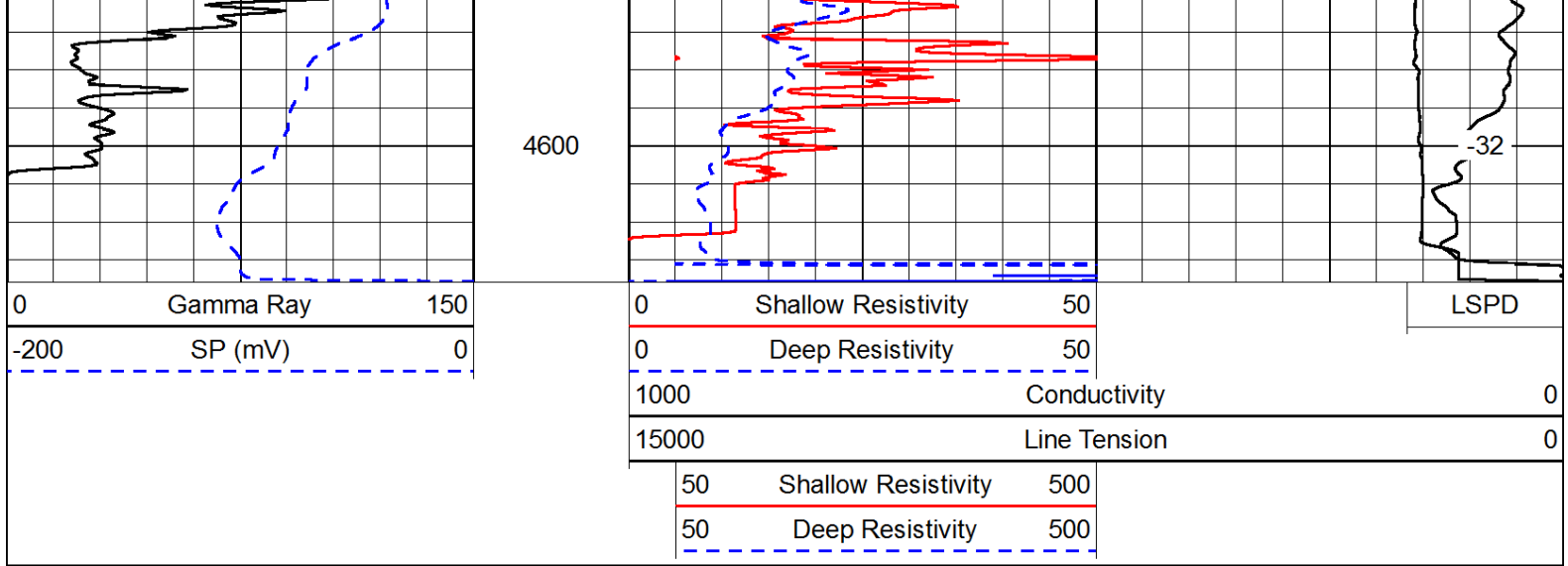




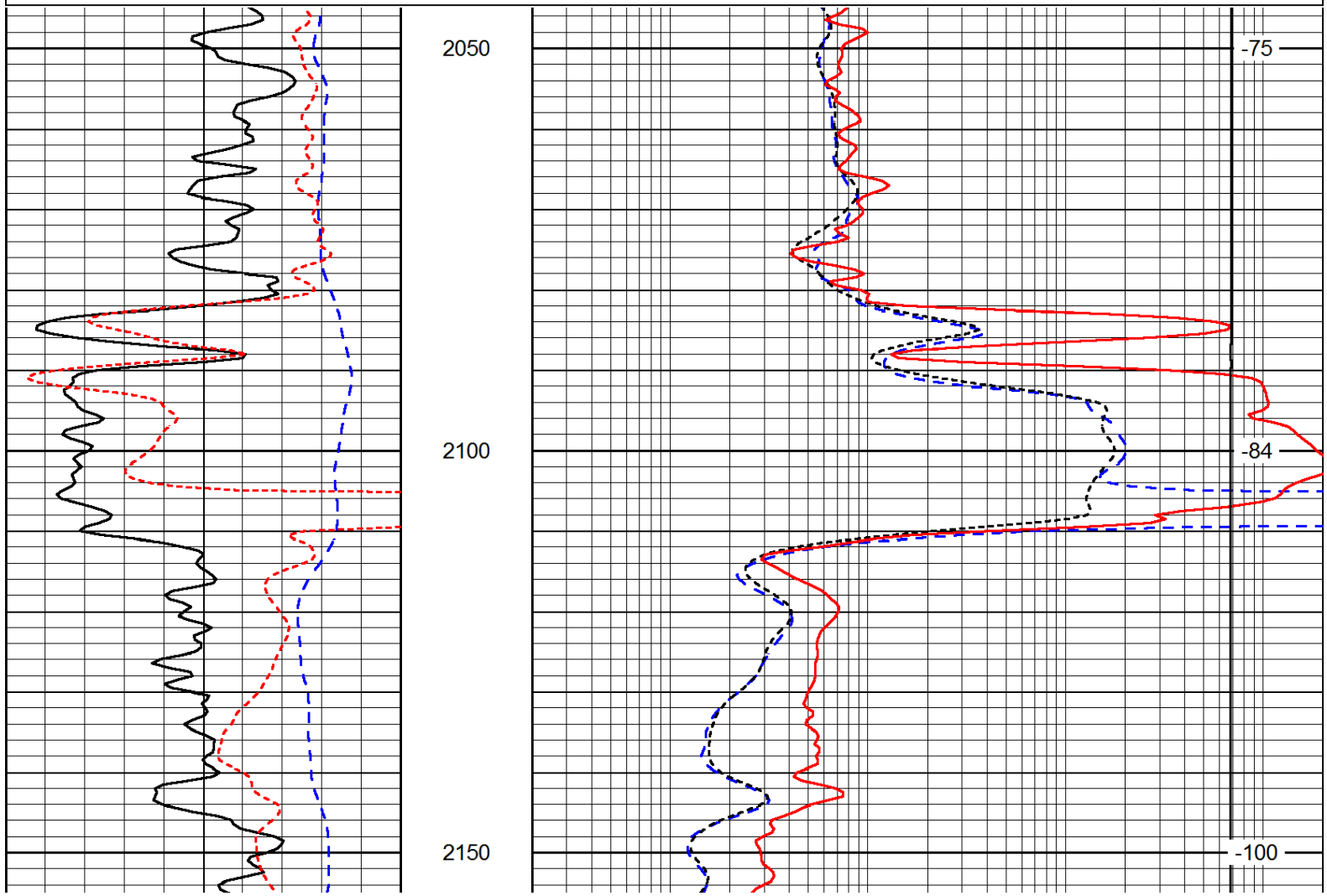
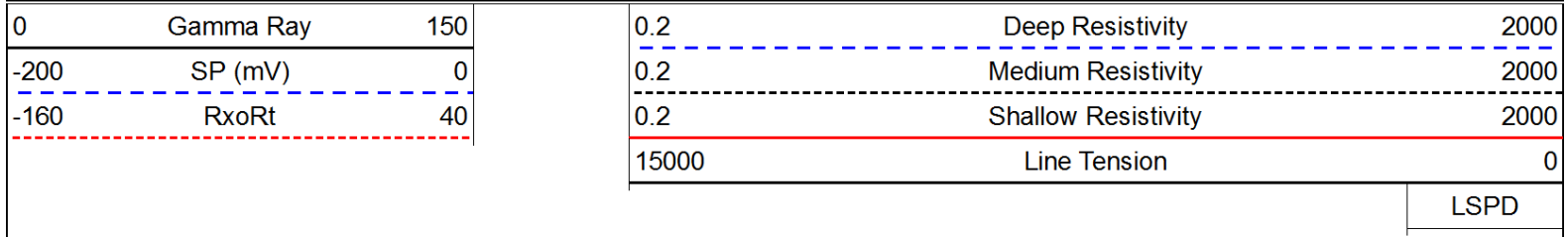








Database File: c:\warrior\data\larson_eugene #1-27\larson_eugene_1_27hd.db
 Dataset Pathname: DIL\larstk
 Presentation Format: dil
 Dataset Creation: Sat Aug 24 14:55:03 2013
 Charted by: Depth in Feet scaled 1:240



0	Gamma Ray	150
-200	SP (mV)	0
-160	RxoRt	40

0.2	Deep Resistivity	2000
0.2	Medium Resistivity	2000
0.2	Shallow Resistivity	2000
15000	Line Tension	0

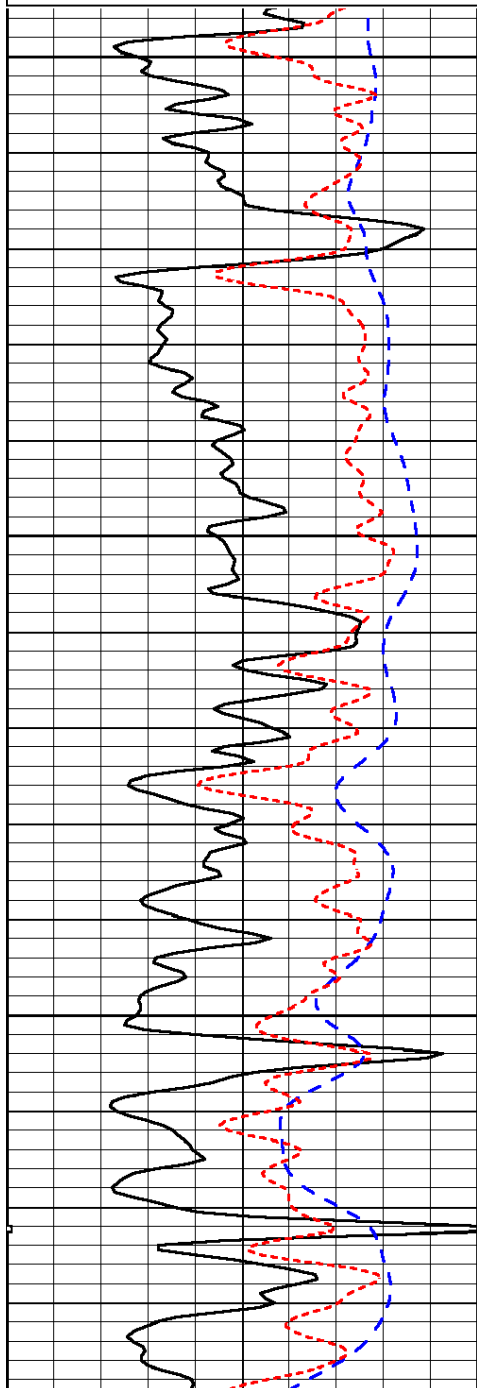
LSPD

Database File: c:\warrior\data\larson_eugene #1-27\larson_eugene_1_27hd.db
 Dataset Pathname: DIL/larstk
 Presentation Format: dil
 Dataset Creation: Sat Aug 24 14:55:03 2013
 Charted by: Depth in Feet scaled 1:240

0	Gamma Ray	150
-200	SP (mV)	0
-160	RxoRt	40

0.2	Deep Resistivity	2000
0.2	Medium Resistivity	2000
0.2	Shallow Resistivity	2000
15000	Line Tension	0

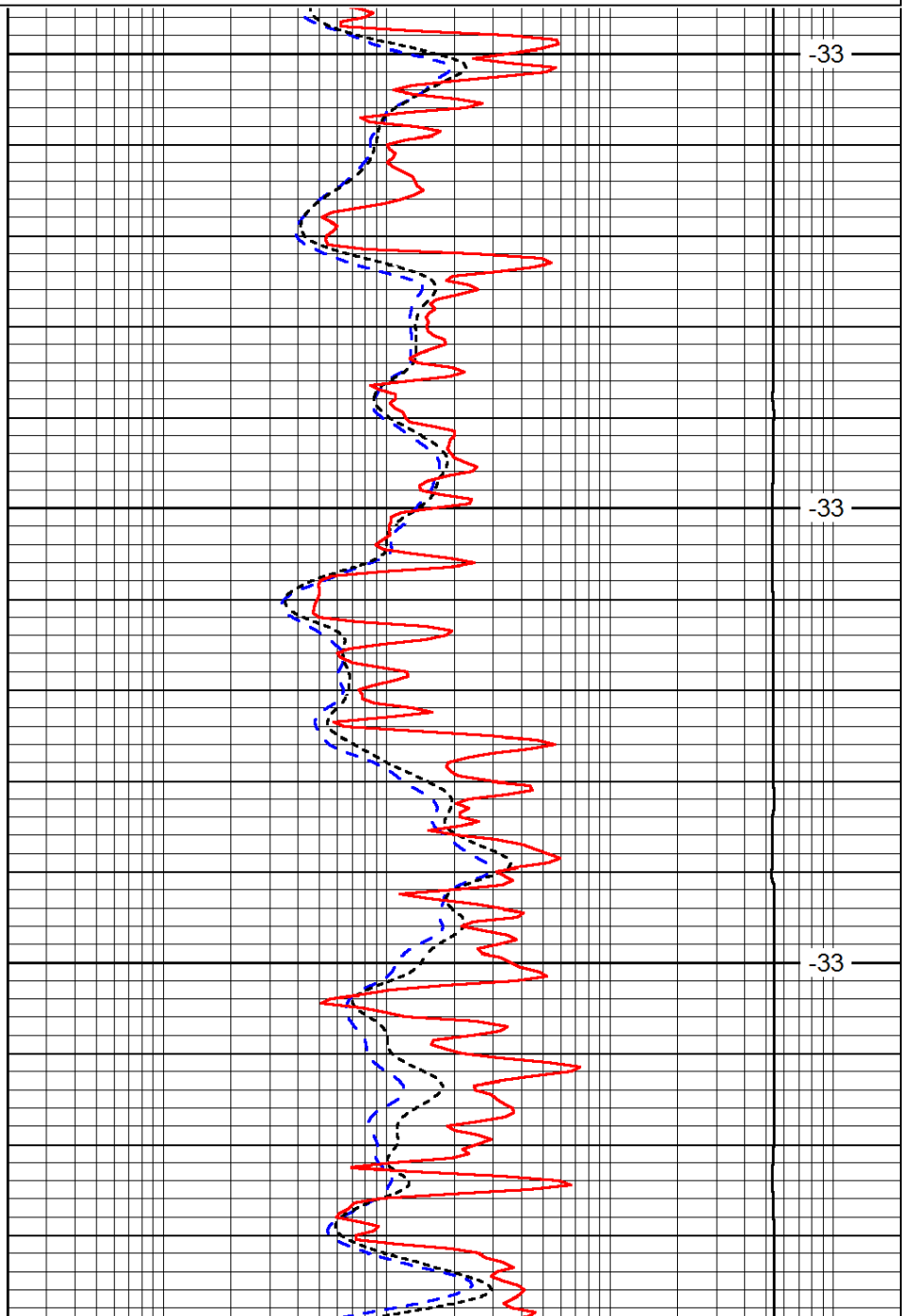
LSPD



3600

3650

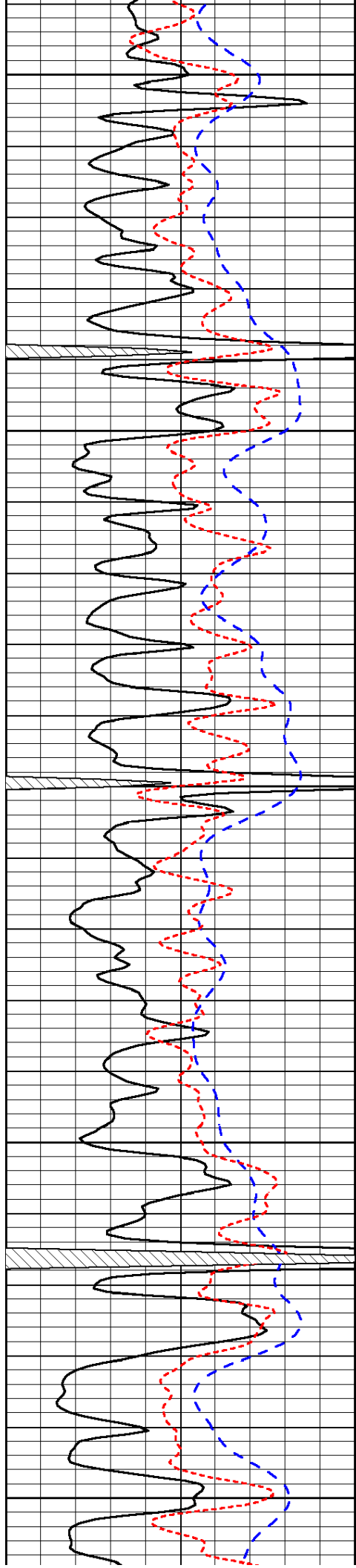
3700



-33

-33

-33



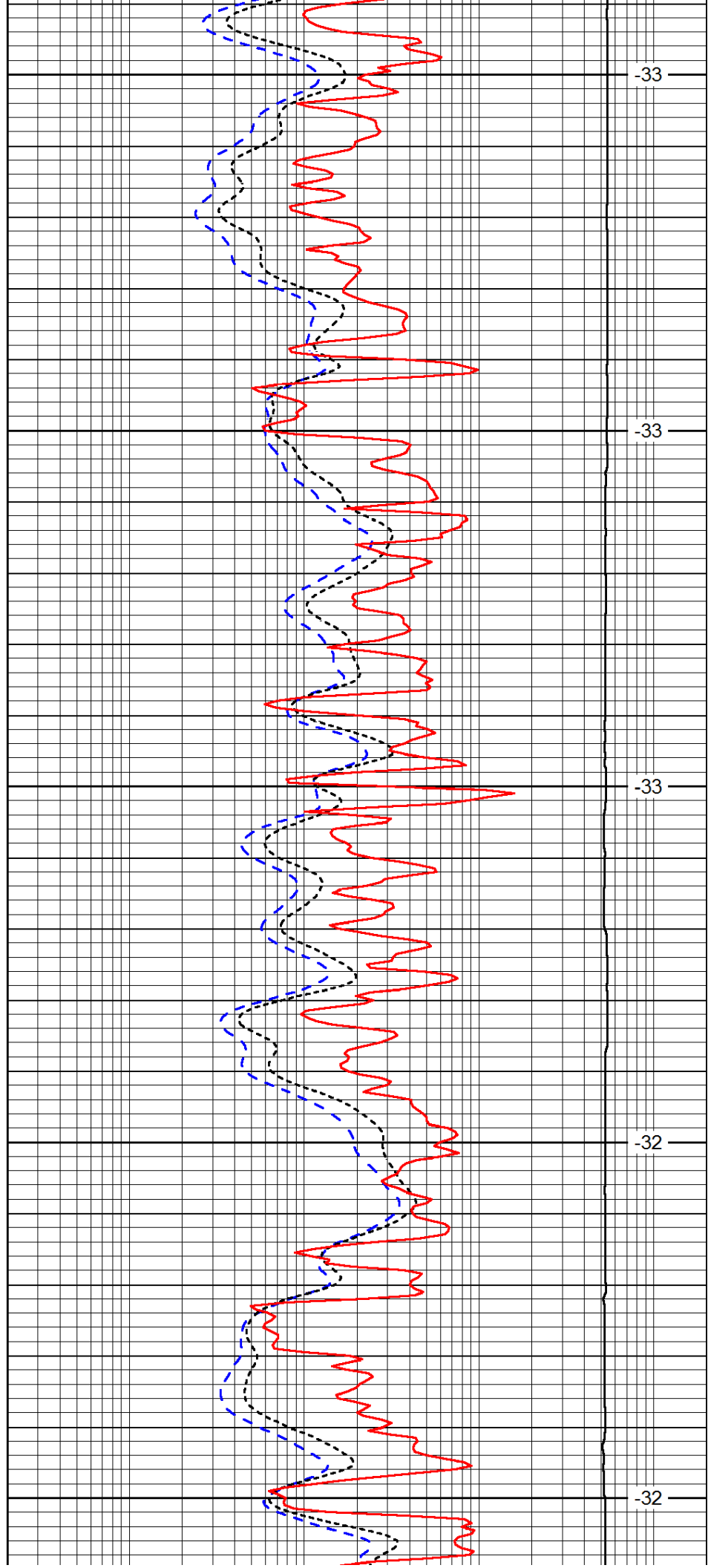
3750

3800

3850

3900

3950



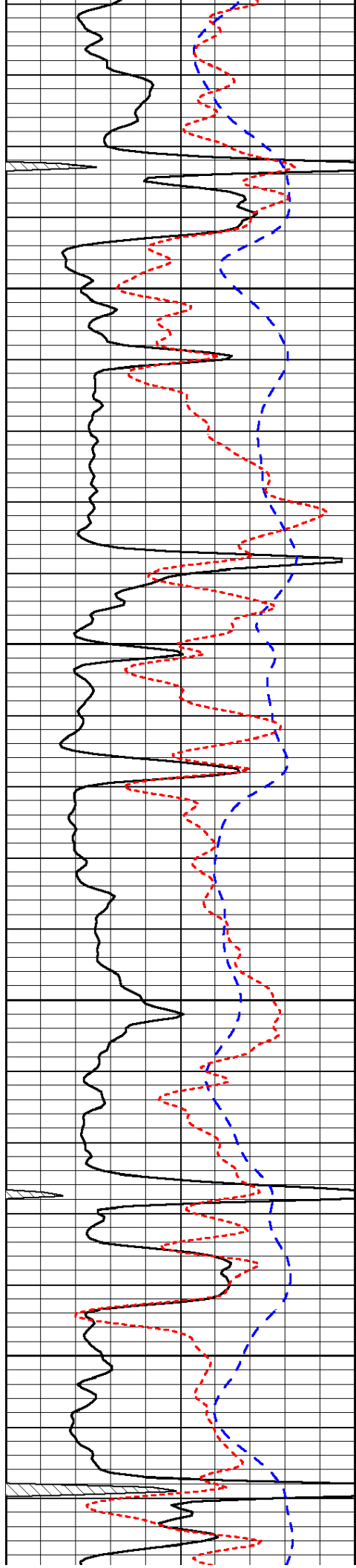
-33

-33

-33

-32

-32

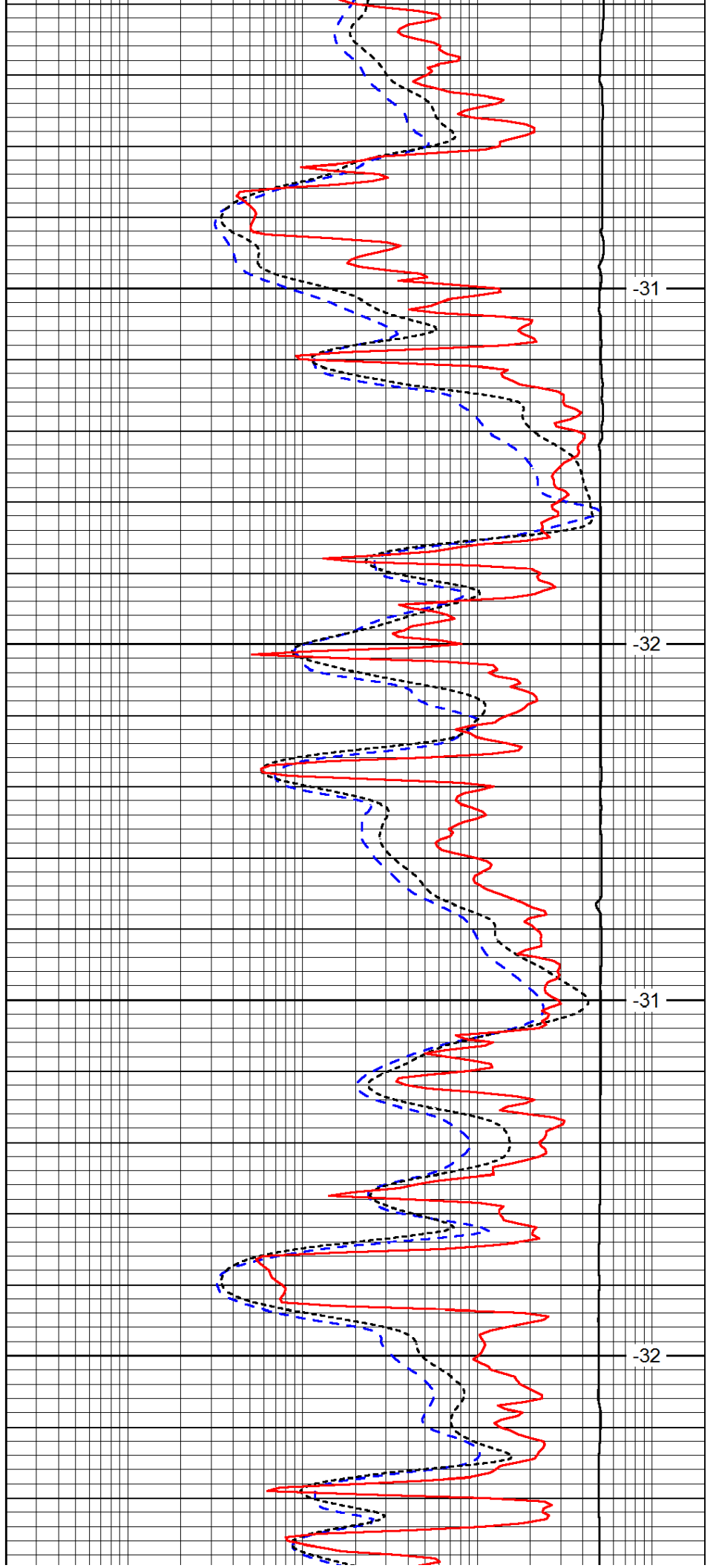


4000

4050

4100

4150

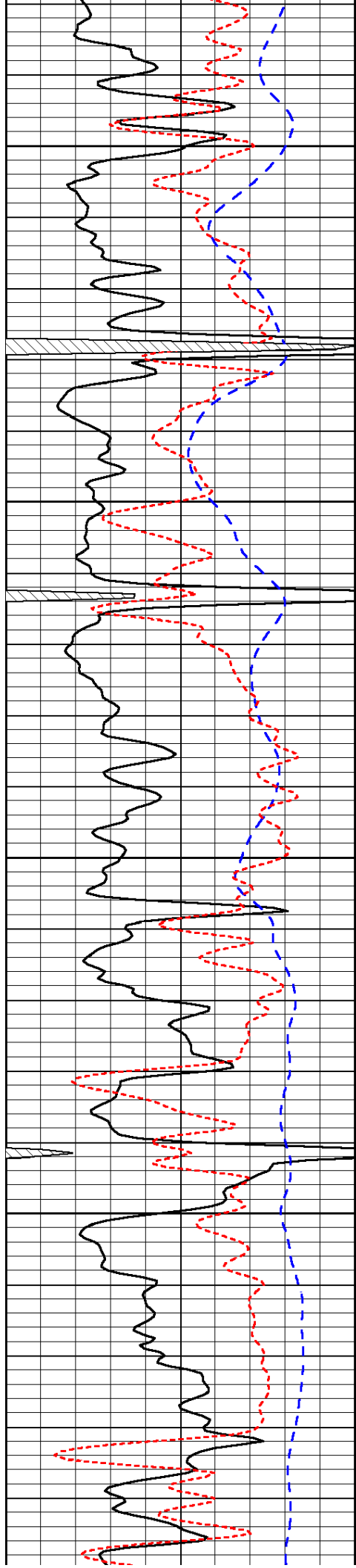


-31

-32

-31

-32



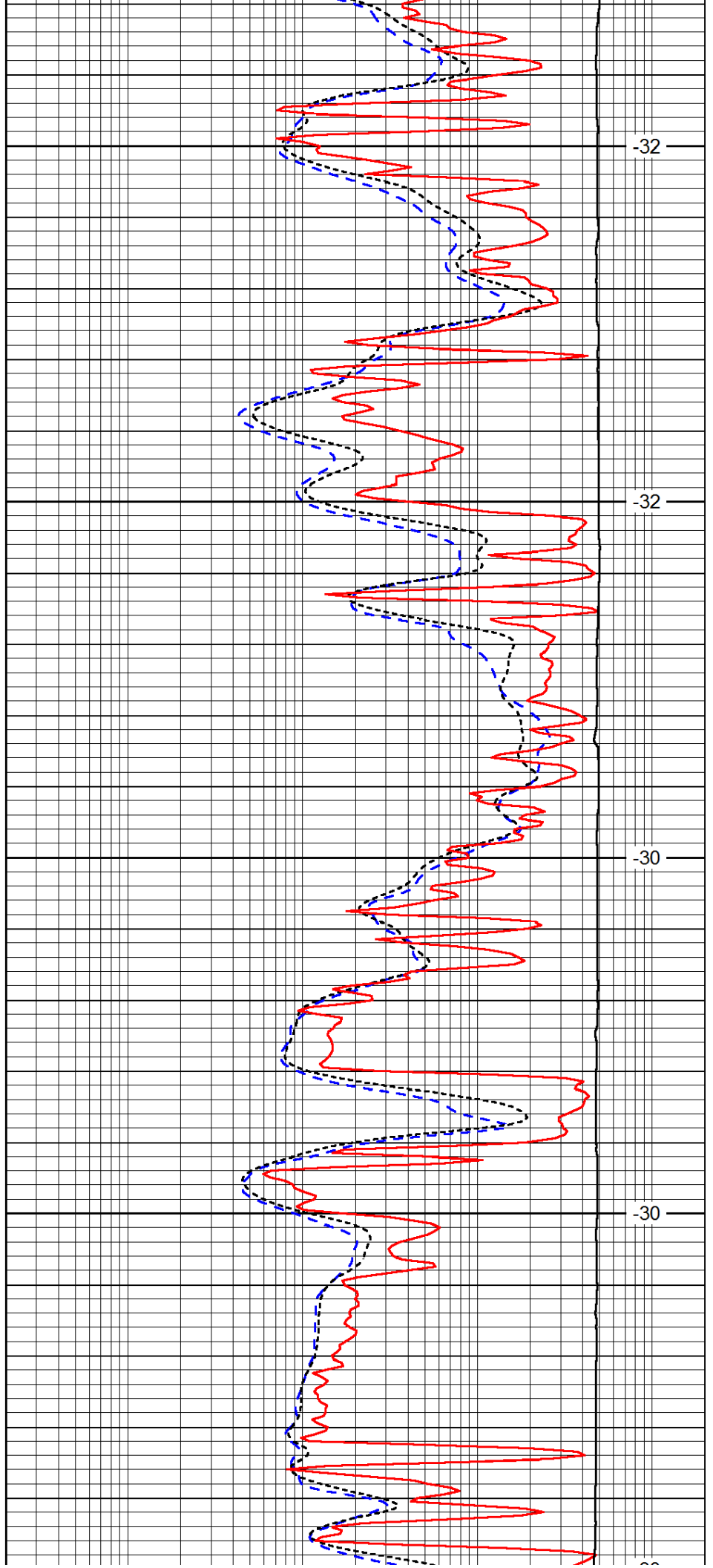
4200

4250

4300

4350

4400



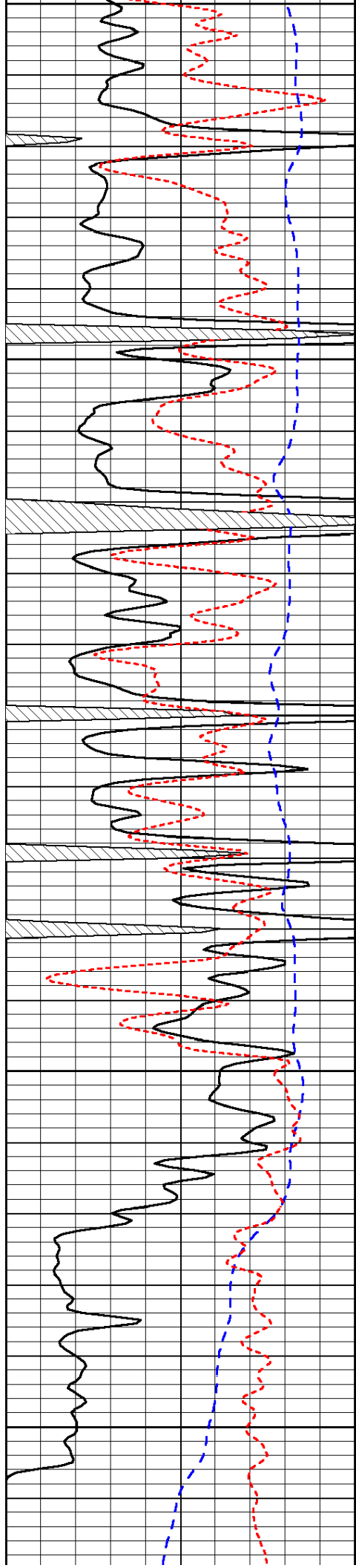
-32

-32

-30

-30

-32



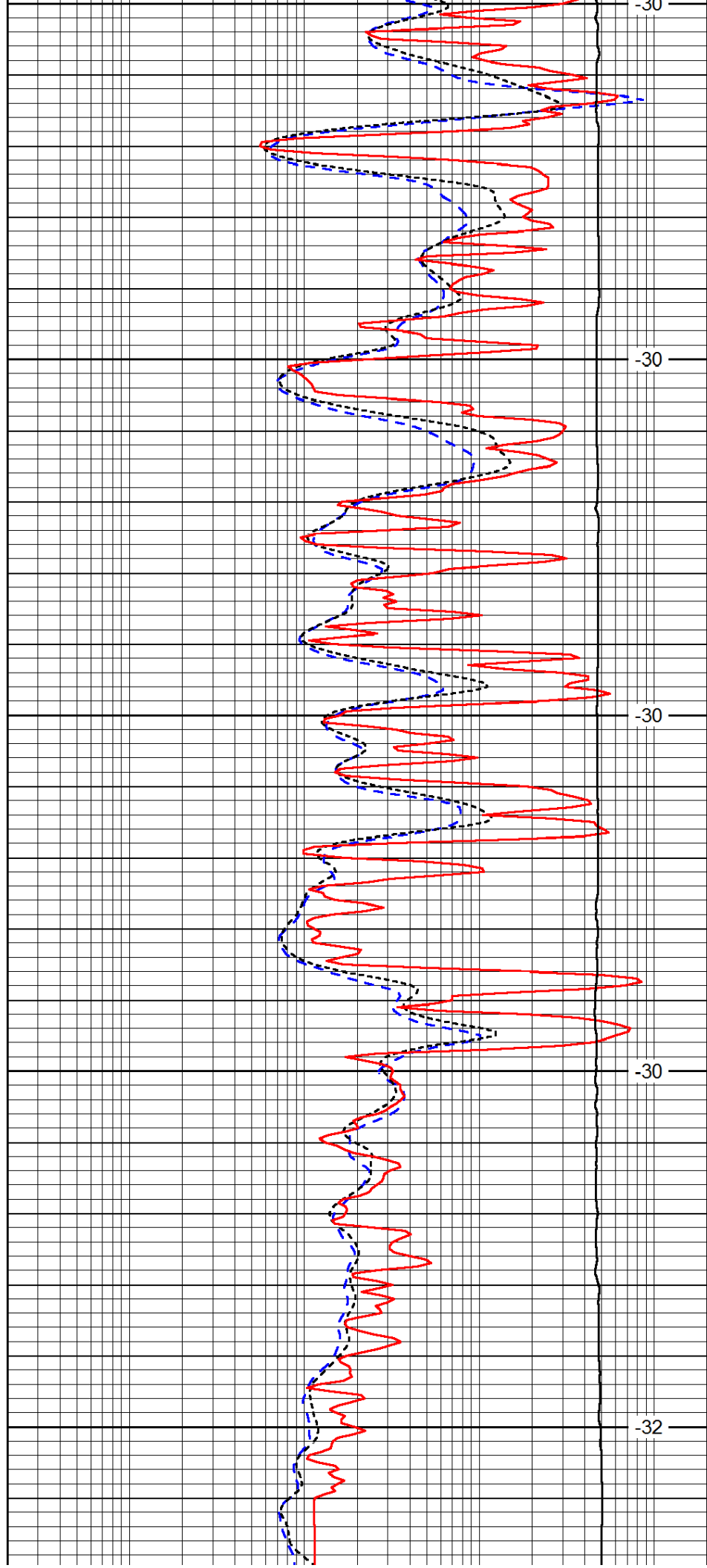
4400

4450

4500

4550

4600



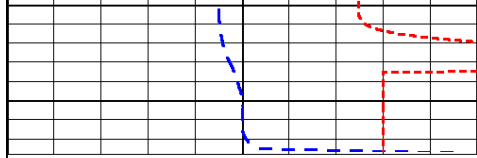
-30

-30

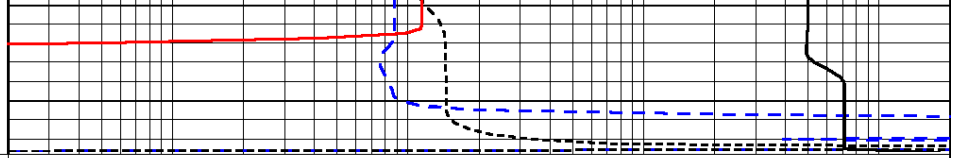
-30

-30

-32



0	Gamma Ray	150
-200	SP (mV)	0
-160	RxoRt	40



0.2	Deep Resistivity	2000
0.2	Medium Resistivity	2000
0.2	Shallow Resistivity	2000
15000	Line Tension	0

LSPD