



Pioneer Energy Services

# Microresistivity Log

15-101-22,455-00-00

API No.

Company Larson Engineering, Inc.

Well Eugene #1-27

Field Wildcat

County Lane State Kansas

Location E/2 SE SW SW  
330' FSL & 1060' FWL

Sec: 27 Twp: 18S Rge: 28W

Permanent Datum Ground Level Elevation 2724

Log Measured From Kelly Bushing 7 Ft. Above Perm. Datum

Drilling Measured From Kelly Bushing

Other Services  
CNL/CDL  
DIL

Elevation

K.B. 2731  
D.F.  
G.L. 2724

Date 8/24/2013

Run Number Two

Depth Driller 4625

Depth Logger 4626

Bottom Logged Interval 4625

Top Log Interval 3600

Casing Driller 8.625 @ 272

Casing Logger 269

Bit Size 7.875

Type Fluid in Hole Chemical

Salinity, ppm CL 2500

Density / Viscosity 9.1 55

pH / Fluid Loss 10.5 8.0

Source of Sample Flowline

Rm @ Meas. Temp 0.52 @ 86

Rmf @ Meas. Temp 0.39 @ 86

Rmc @ Meas. Temp 0.70 @ 86

Source of Rmf / Rmc Charts

Rm @ BHT 0.37 @ 122

Operating Rig Time 4 Hours

Max Rec. Temp. F 122

Equipment Number 15

Location Hays

Recorded By D.Kerr

Witnessed By Vern Schrag

<<< Fold Here >>>

All interpretations are opinions based on inferences from electrical or other measurements and we cannot and do not guarantee the accuracy or correctness of any interpretation, and we shall not, except in the case of gross or willful negligence on our part, be liable or responsible for any loss, costs, damages, or expenses incurred or sustained by anyone resulting from any interpretation made by any of our officers, agents or employees. These interpretations are also subject to our general terms and conditions set out in our current Price Schedule.

### Comments

Thank you for using Pioneer Energy Services  
www.pioneerres.com  
785 625 3858

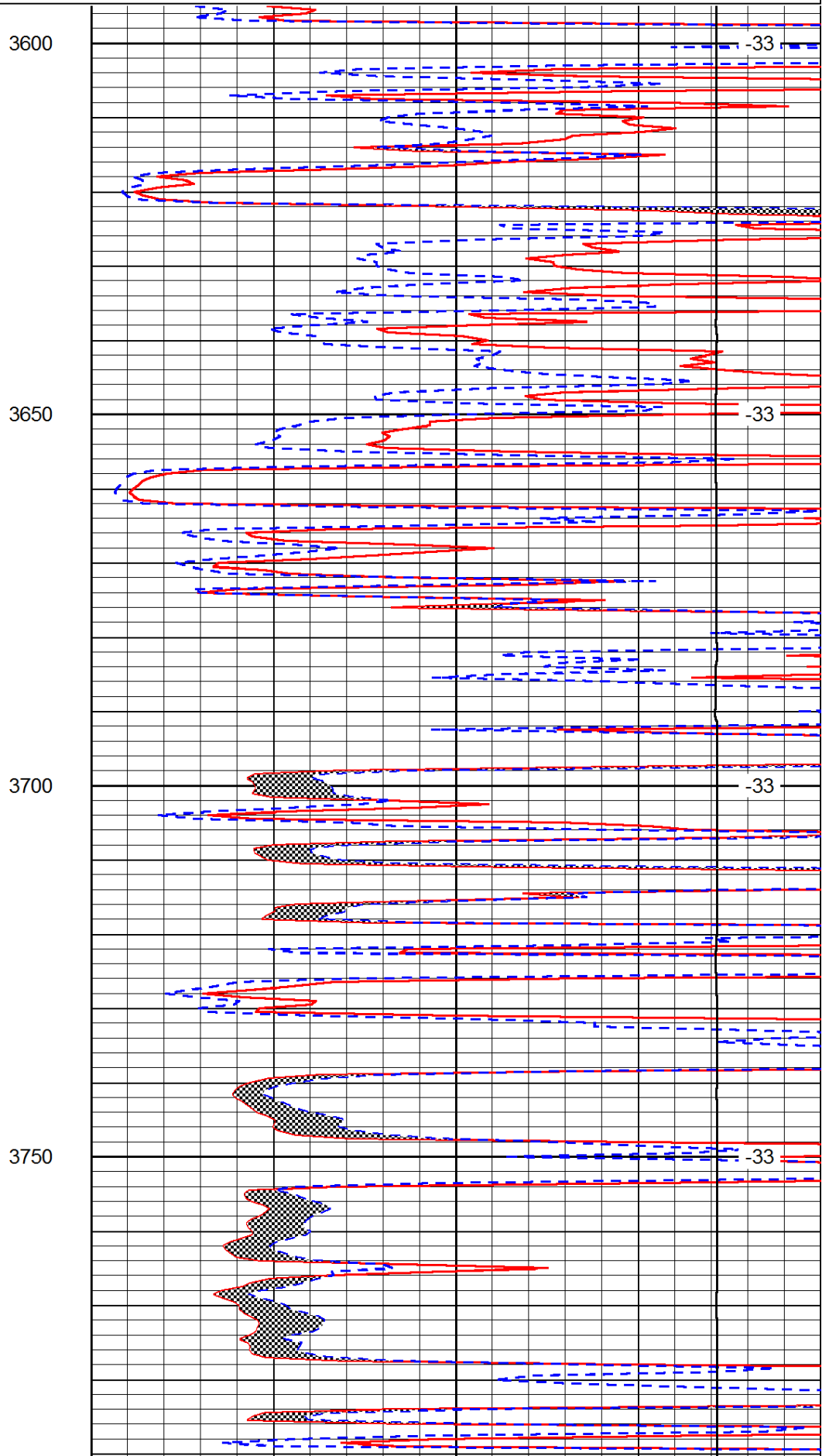
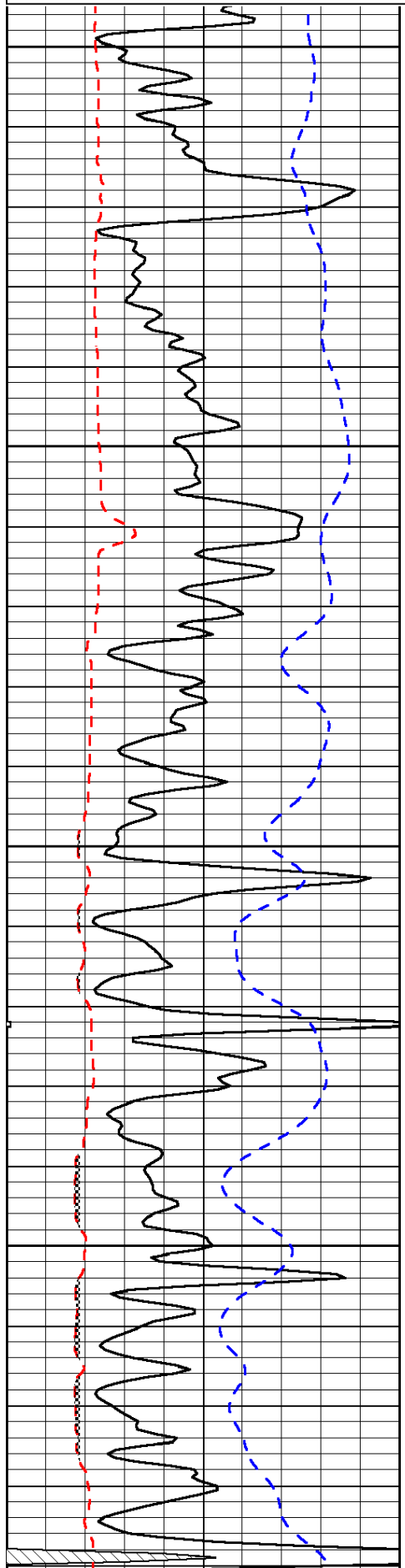
Dighton KS, 2 East to Mustang RD,  
2 South to 130 RD, 1 1/4 East, North Into

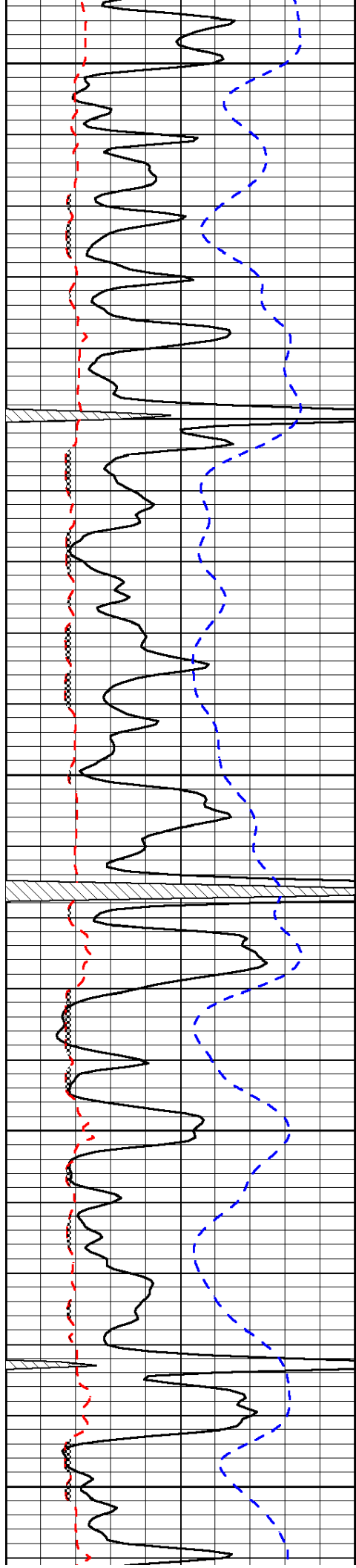
Database File: c:\warrior\data\larson\_eugene #1-27\larson\_eugene\_1\_27hd.db  
Dataset Pathname: DIL\larstk  
Presentation Format: micro  
Dataset Creation: Sat Aug 24 14:55:03 2013  
Charted by: Depth in Feet scaled 1:240

|      |                          |     |
|------|--------------------------|-----|
| 0    | Gamma Ray                | 150 |
| 6    | Micro Log Caliper (GAPI) | 16  |
| -200 | SP (mV)                  | 0   |

|       |                     |    |
|-------|---------------------|----|
| 0     | Micro Inverse 1 X 1 | 40 |
| 0     | Micro Normal 2"     | 40 |
| 15000 | Line Weight         | 0  |

LSPD





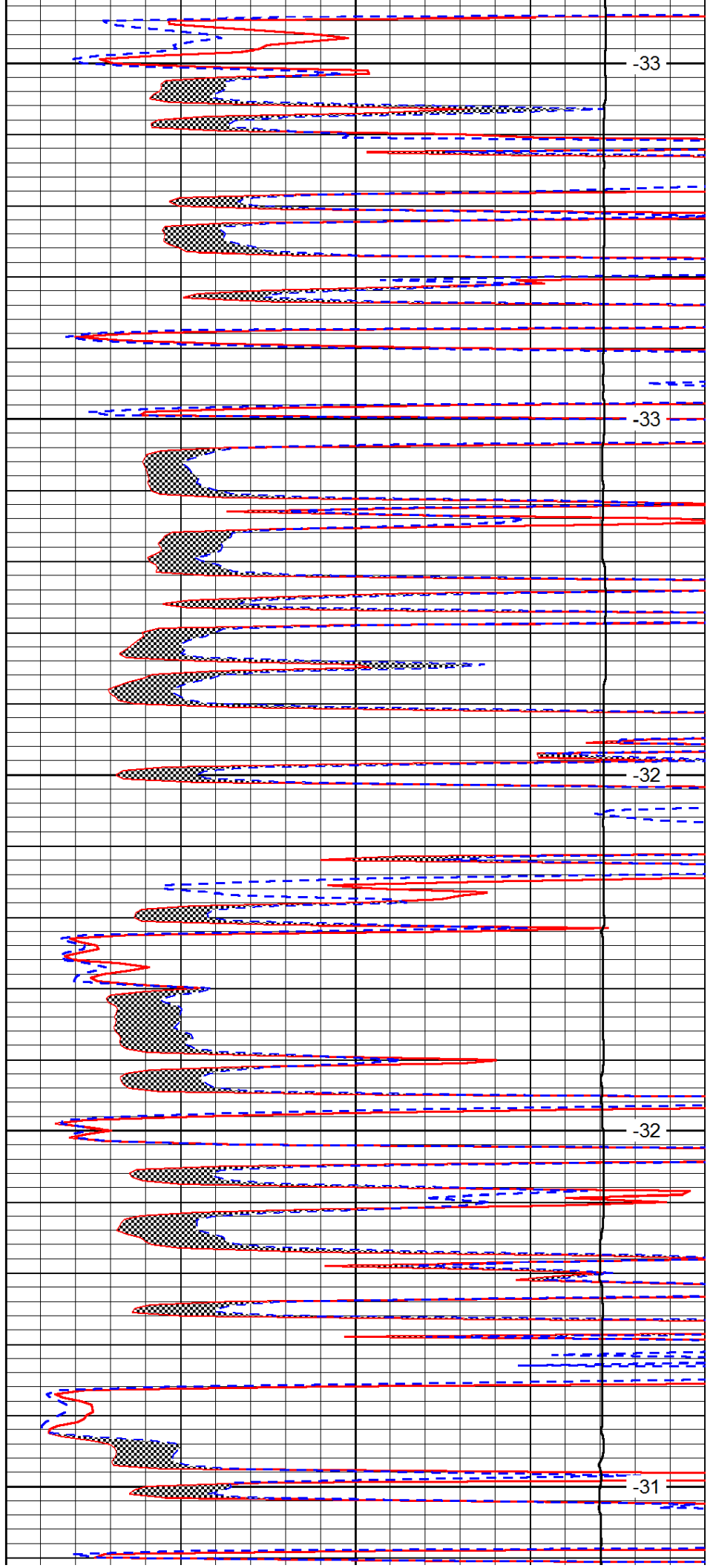
3800

3850

3900

3950

4000



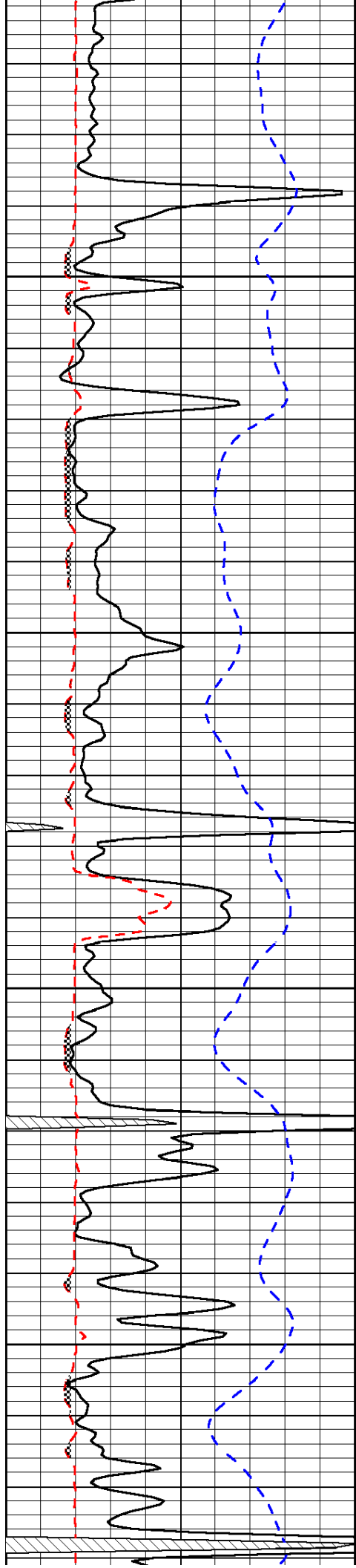
-33

-33

-32

-32

-31

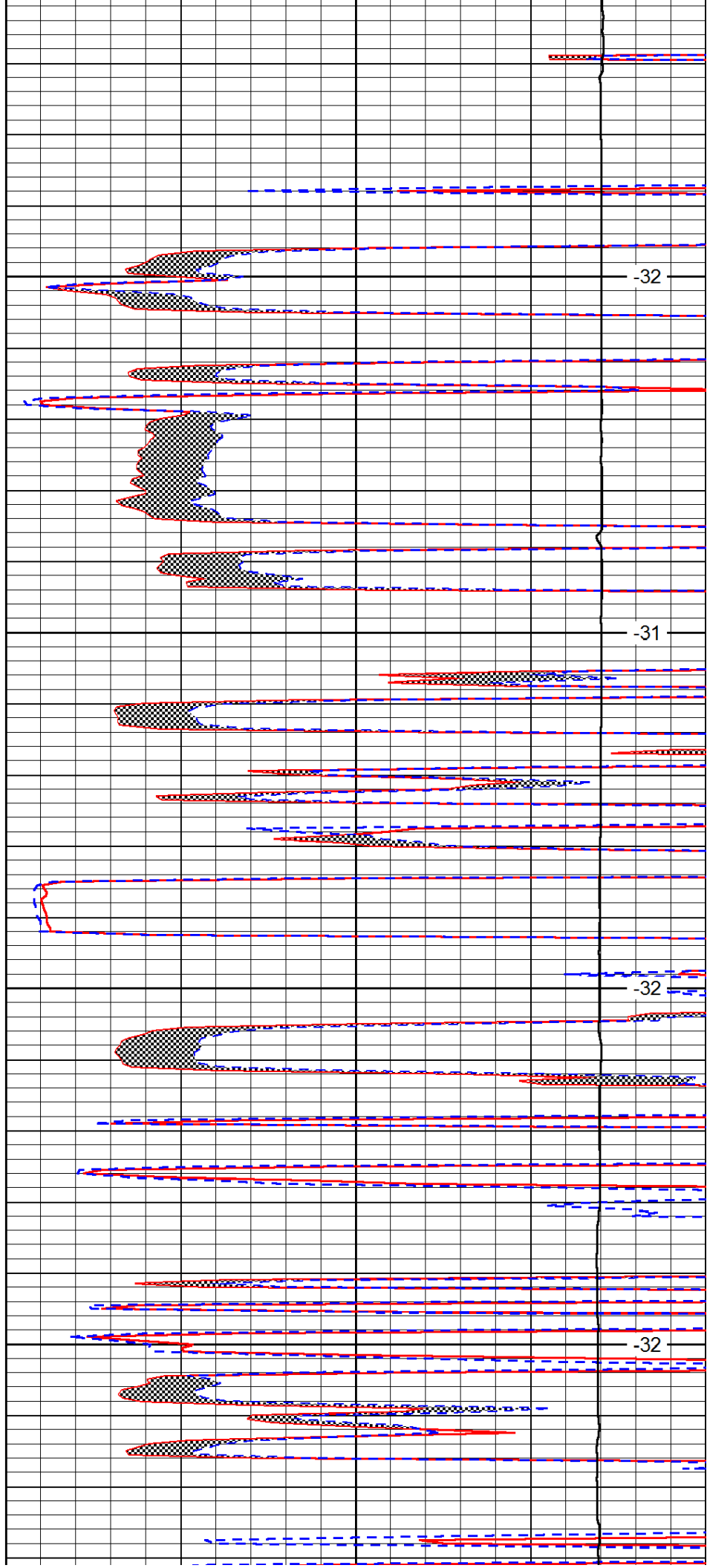


4050

4100

4150

4200

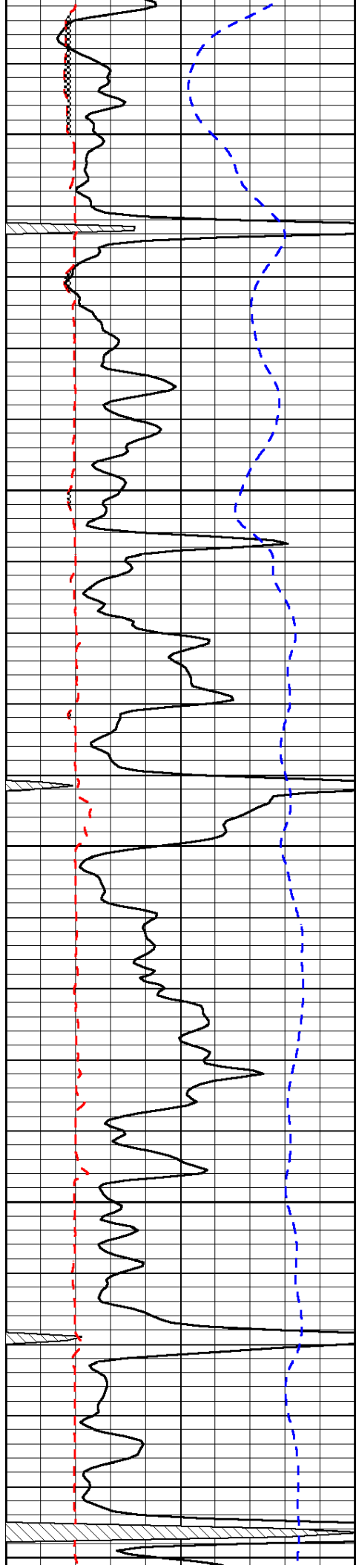


-32

-31

-32

-32



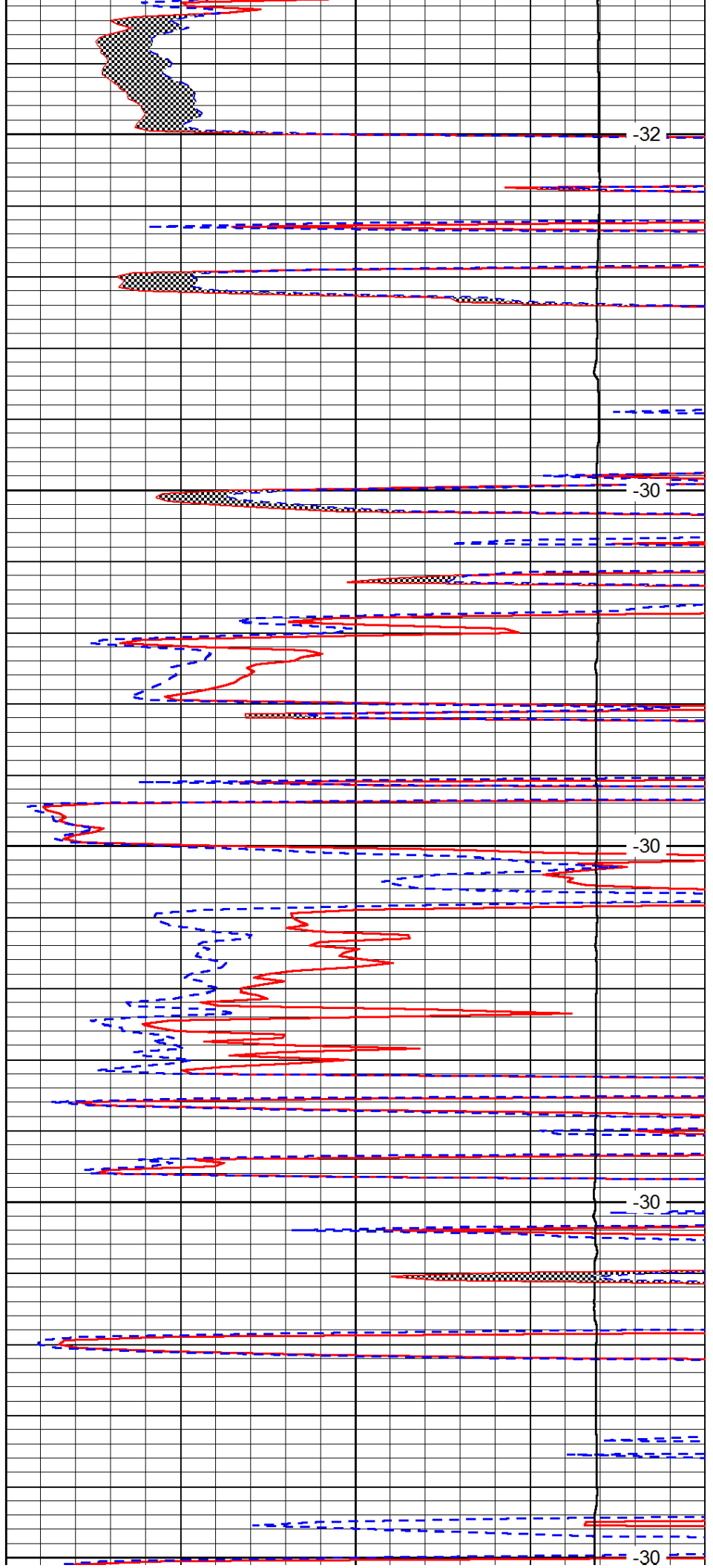
4250

4300

4350

4400

4450



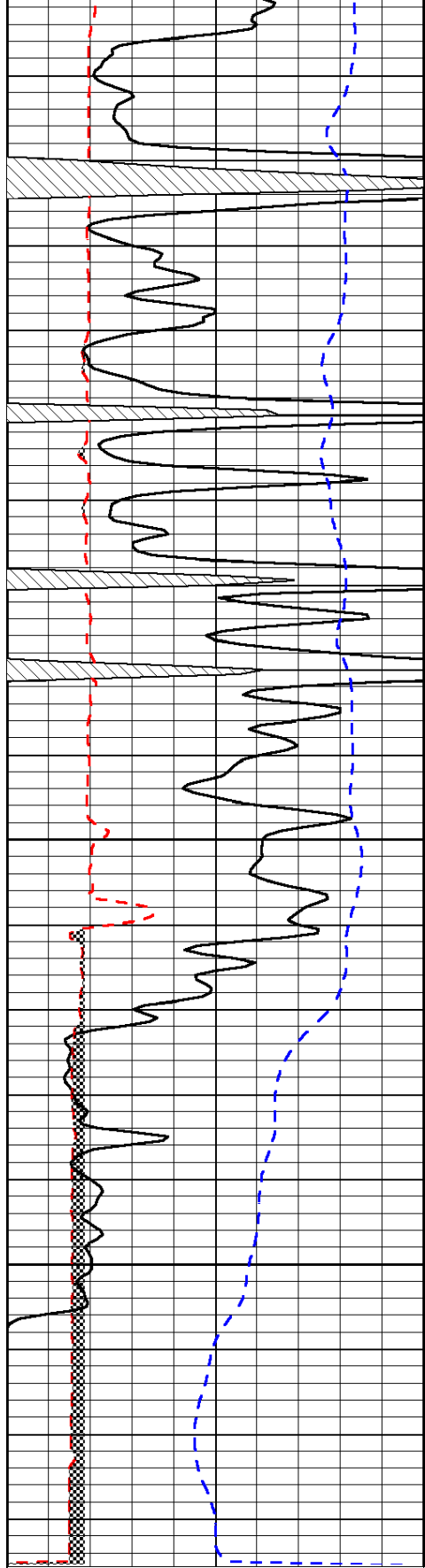
-32

-30

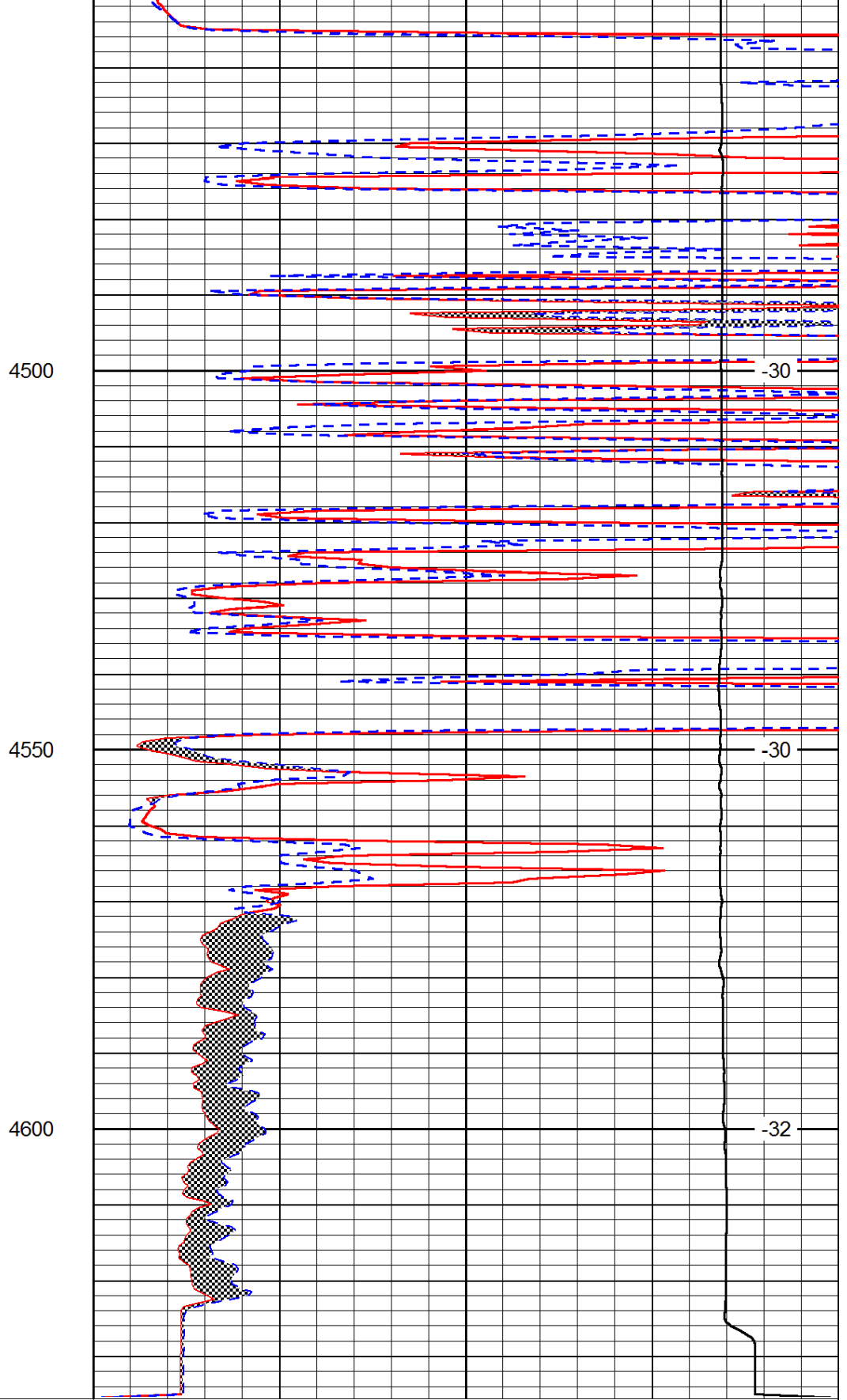
-30

-30

-30



|      |                          |     |
|------|--------------------------|-----|
| 0    | Gamma Ray                | 150 |
| 6    | Micro Log Caliper (GAPI) | 16  |
| -200 | SP (mV)                  | 0   |



|       |                     |    |
|-------|---------------------|----|
| 0     | Micro Inverse 1 X 1 | 40 |
| 0     | Micro Normal 2''    | 40 |
| 15000 | Line Weight         | 0  |

LSPD