



Microresistivity Log

DIGITAL LOG (785) 625-3858

API No.	15-009-25440-00-00		
Company	LB Exploration, Inc.		
Well	Hiss No. 2		
Field	Merten Northeast		
County	Barton	State	Kansas
Location	SE - SW - NE - NE		
Sec: 36	Twp: 18 S	Rge: 15 W	
Permanent Datum	Ground Level	Elevation	1899
Log Measured From	Kelly Bushing	8 Ft. Above Perm. Datum	
Drilling Measured From	Kelly Bushing		
		K.B. 1907	
		D.F. 1899	
		G.L. 1899	

Date	6/27/2010	
Run Number	Two	
Depth Driller	3610	
Depth Logger	3616	
Bottom Logged Interval	3615	
Top Log Interval	2800	
Casing Driller	8.625 @ 904	
Casing Logger	900	
Bit Size	7.875	
Type Fluid in Hole	Chemical	
Salinity, ppm CL	8000	
Density / Viscosity	9.2	51
pH / Fluid Loss	10.0	8.0
Source of Sample	Flowline	
Rm @ Meas. Temp	0.50 @ 80	
Rmf @ Meas. Temp	0.38 @ 80	
Rmc @ Meas. Temp	0.68 @ 80	
Source of Rmf / Rmc	Charts	
Rm @ BHT	0.36 @ 112	
Operating Rig Time	3 Hours	
Max Rec. Temp. F	112	
Equipment Number	15	
Location	Hays	
Recorded By	B. Becker	
Witnessed By	Josh Austin	

<<< Fold Here >>>

All interpretations are opinions based on inferences from electrical or other measurements and we cannot and do not guarantee the accuracy or correctness of any interpretation, and we shall not, except in the case of gross or willful negligence on our part, be liable or responsible for any loss, costs, damages, or expenses incurred or sustained by anyone resulting from any interpretation made by any of our officers, agents or employees. These interpretations are also subject to our general terms and conditions set out in our current Price Schedule.

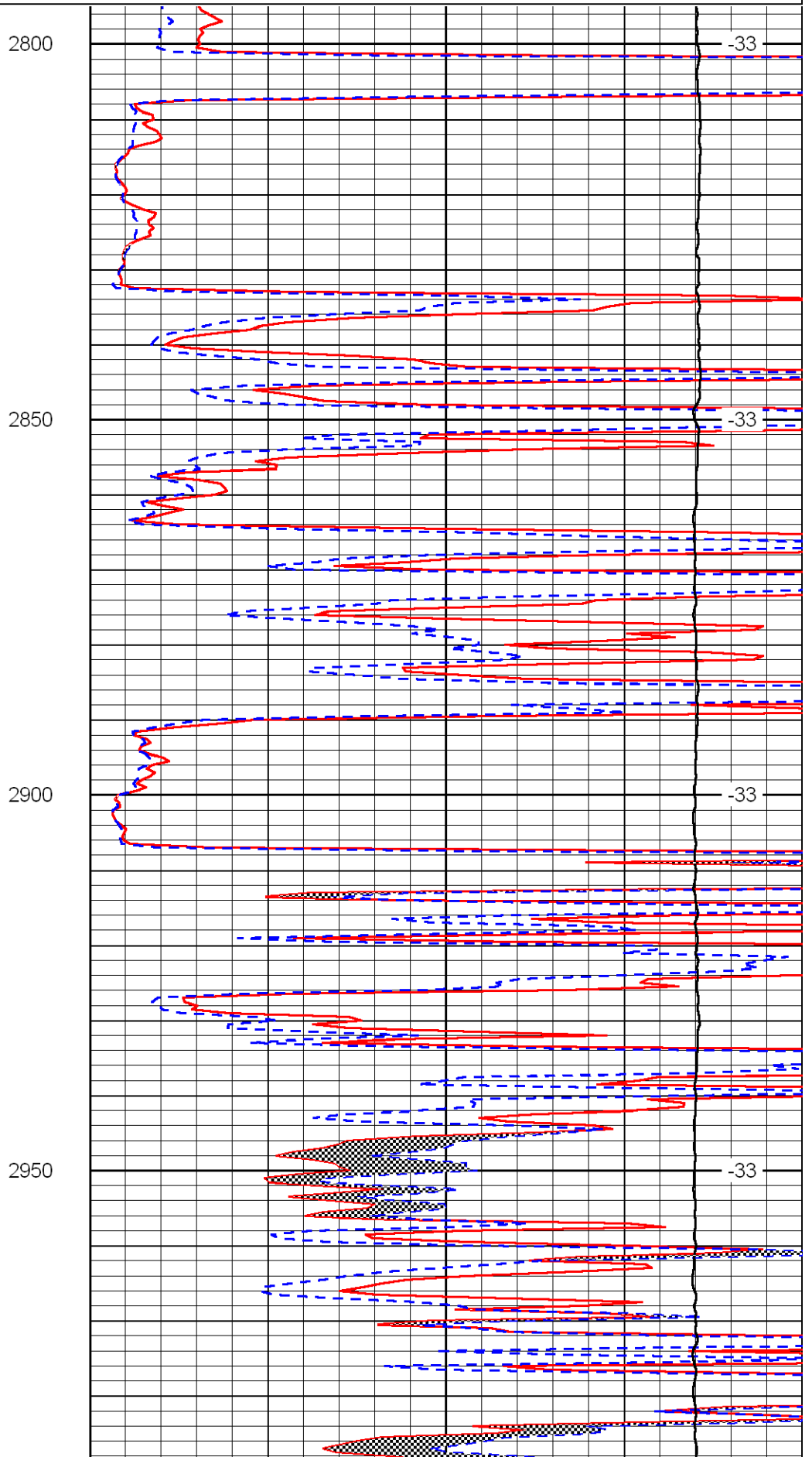
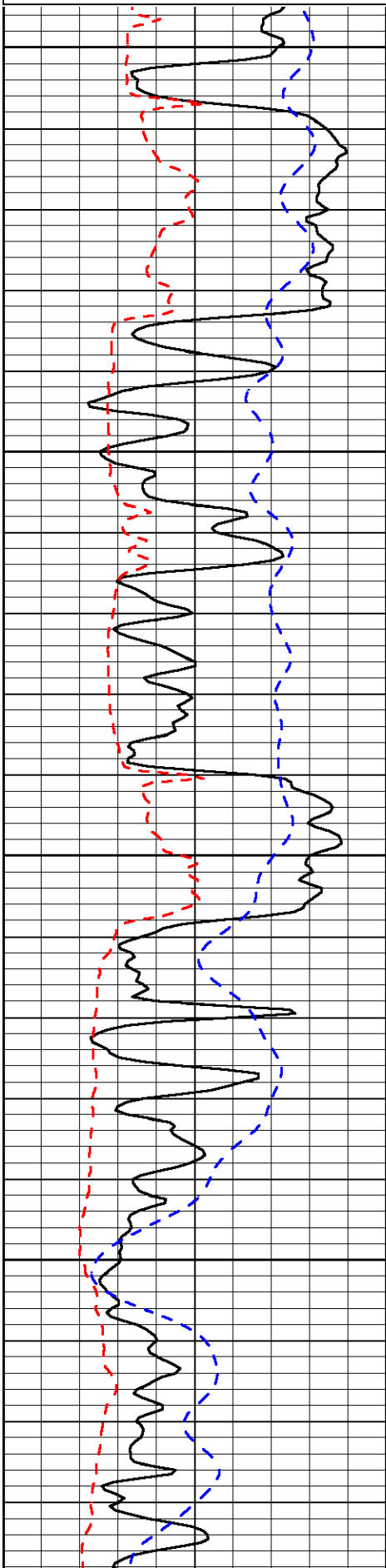
Comments

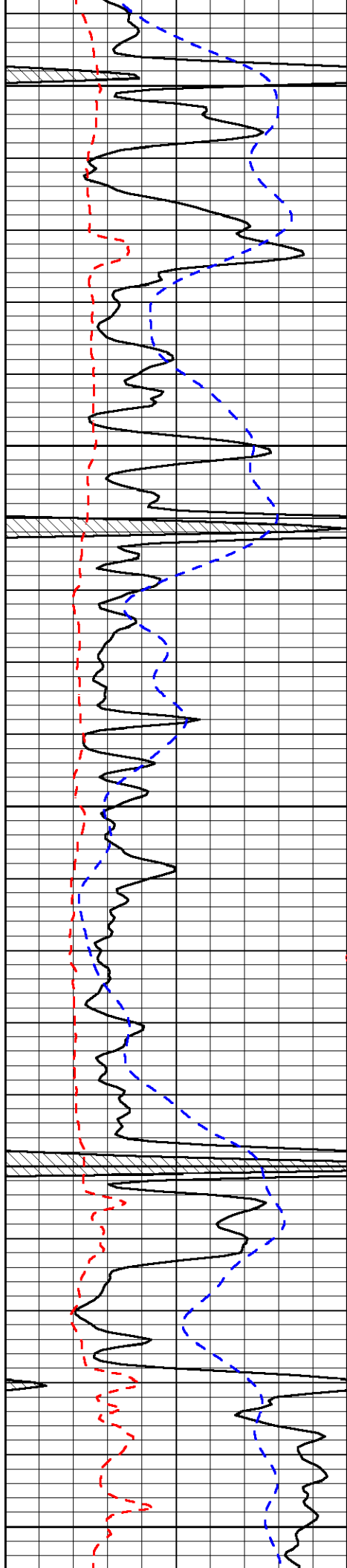
Thank you for using Log-Tech, Inc.
 (785) 625-3858
 Rush Center, Ks;
 East on 96 to Olmits Blacktop
 3/8 North;
 West Into along trees (just south of bridge)

Database File:	lb hd.db
Dataset Pathname:	DIL/lbstk
Presentation Format:	micro
Dataset Creation:	Sun Jun 27 23:59:45 2010
Charted by:	Depth in Feet scaled 1:240

0	Gamma Ray	150
6	MCAL (GAPI)	16
2.875	Mud Cake (GAPI)	7.875
-200	SP	0

0	Micro Inverse 1 X 1	40
0	Micro Normal 2"	40
10000	Line Weight	0
		LSPD





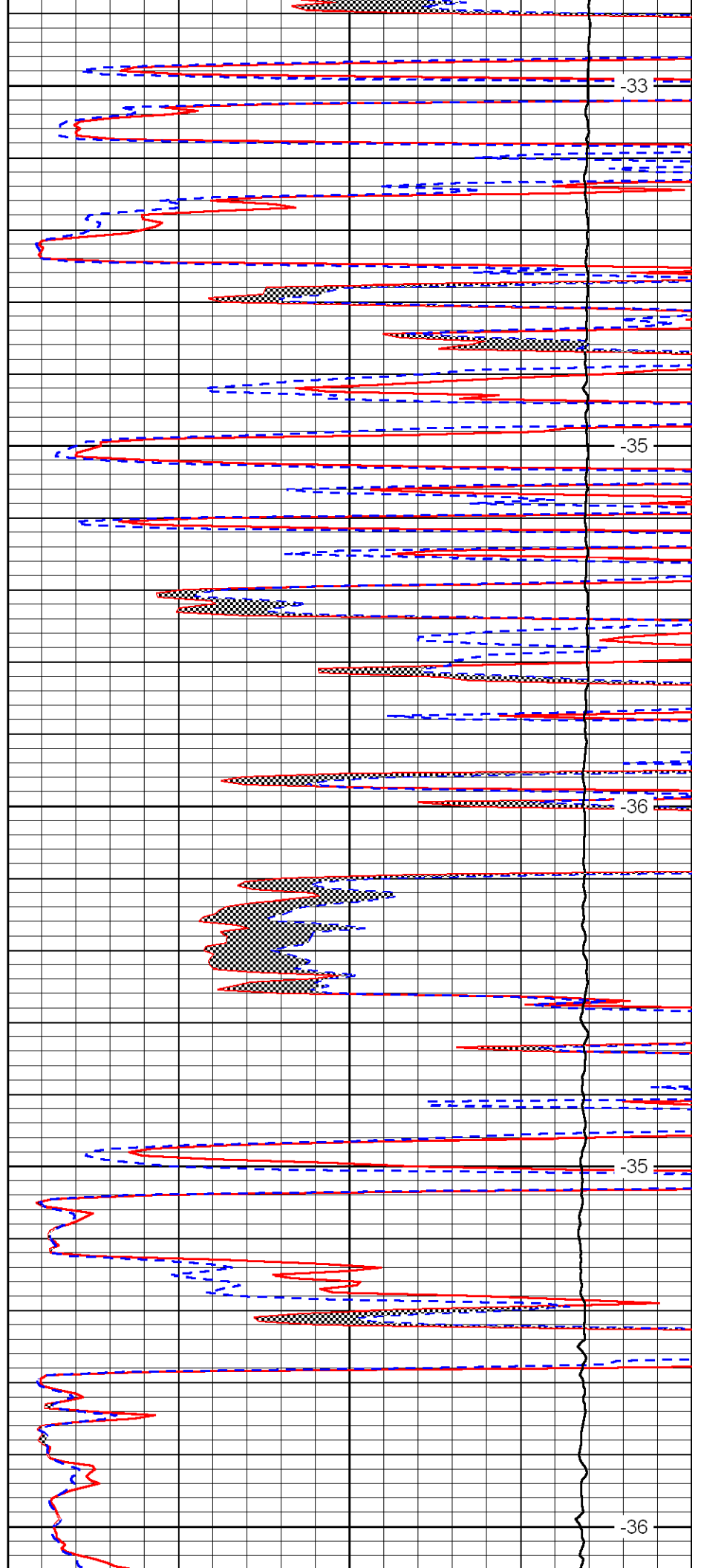
3000

3050

3100

3150

3200



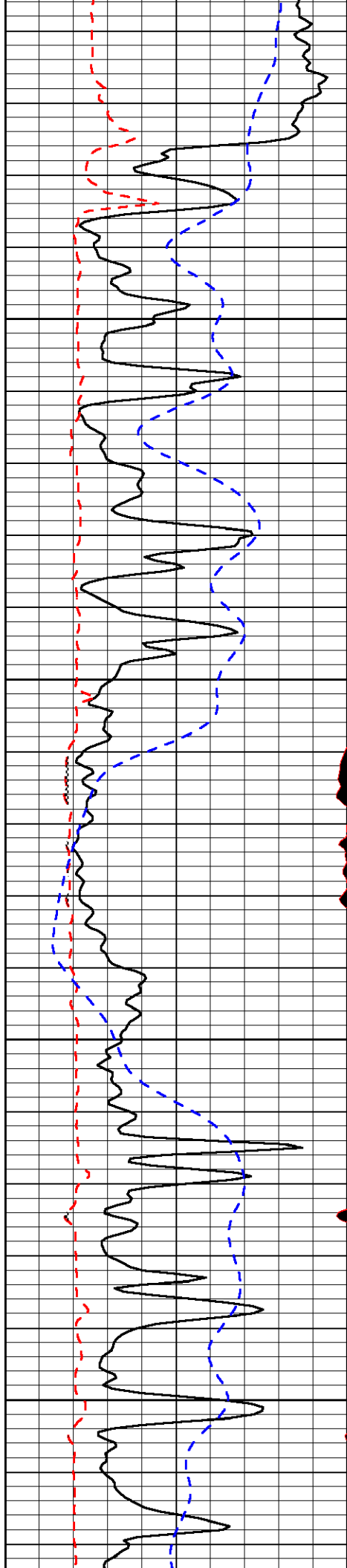
-33

-35

-36

-35

-36

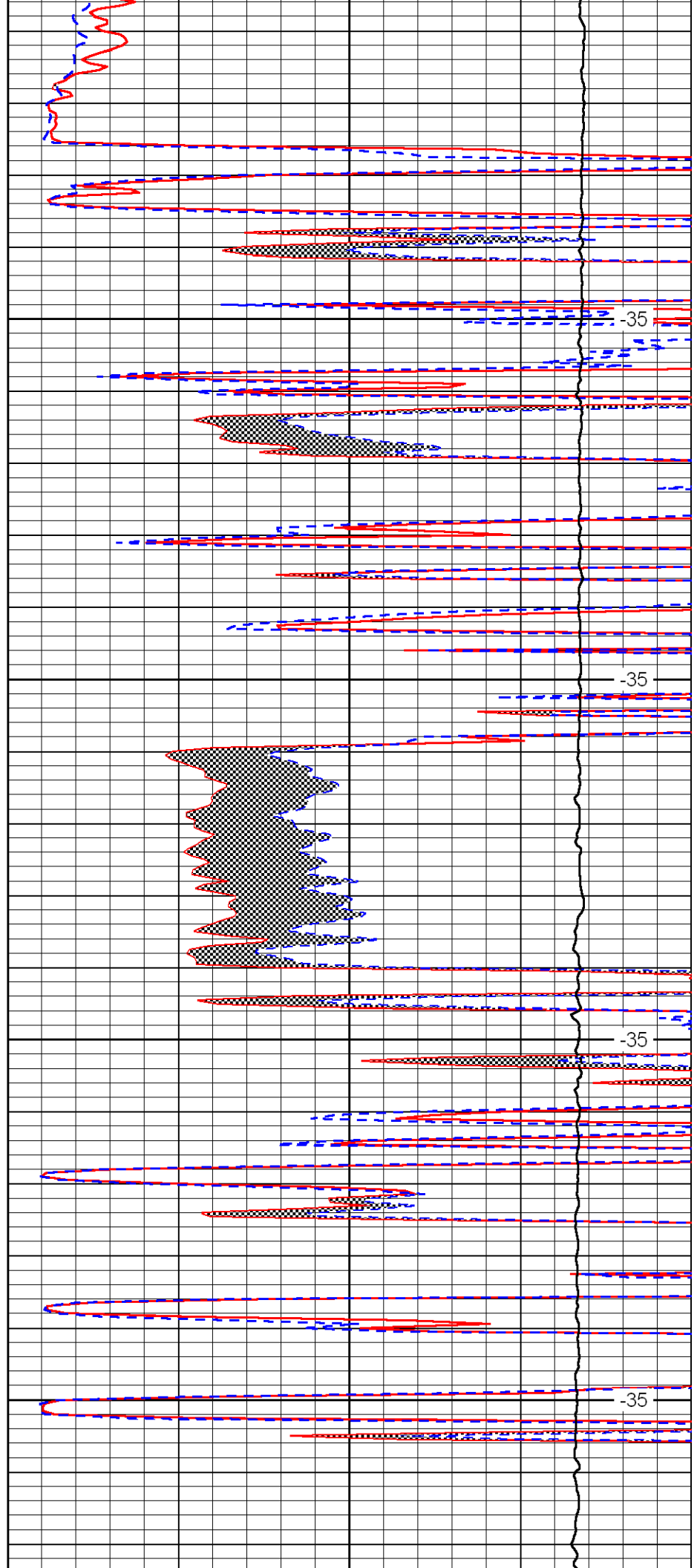


3250

3300

3350

3400

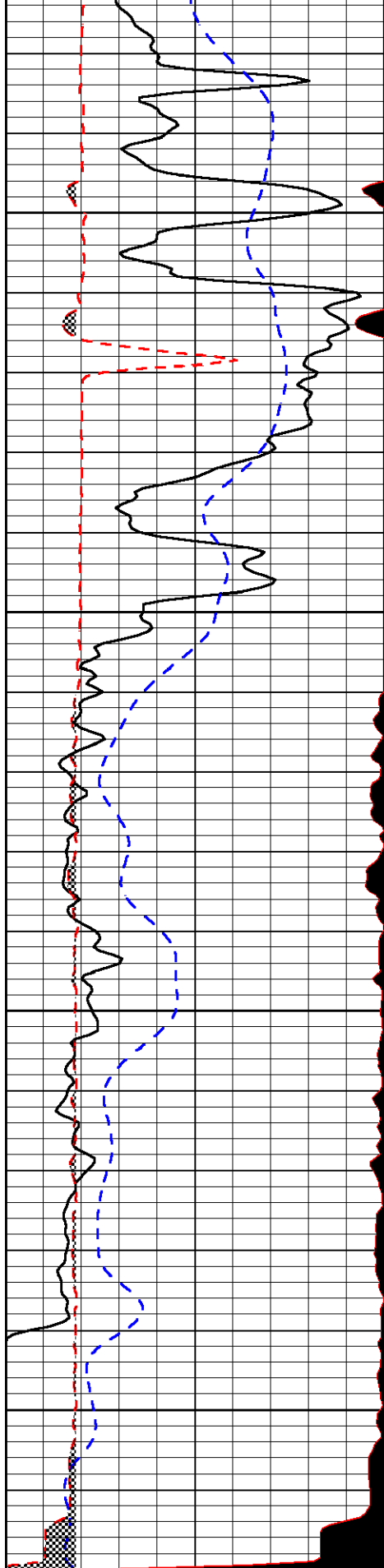


-35

-35

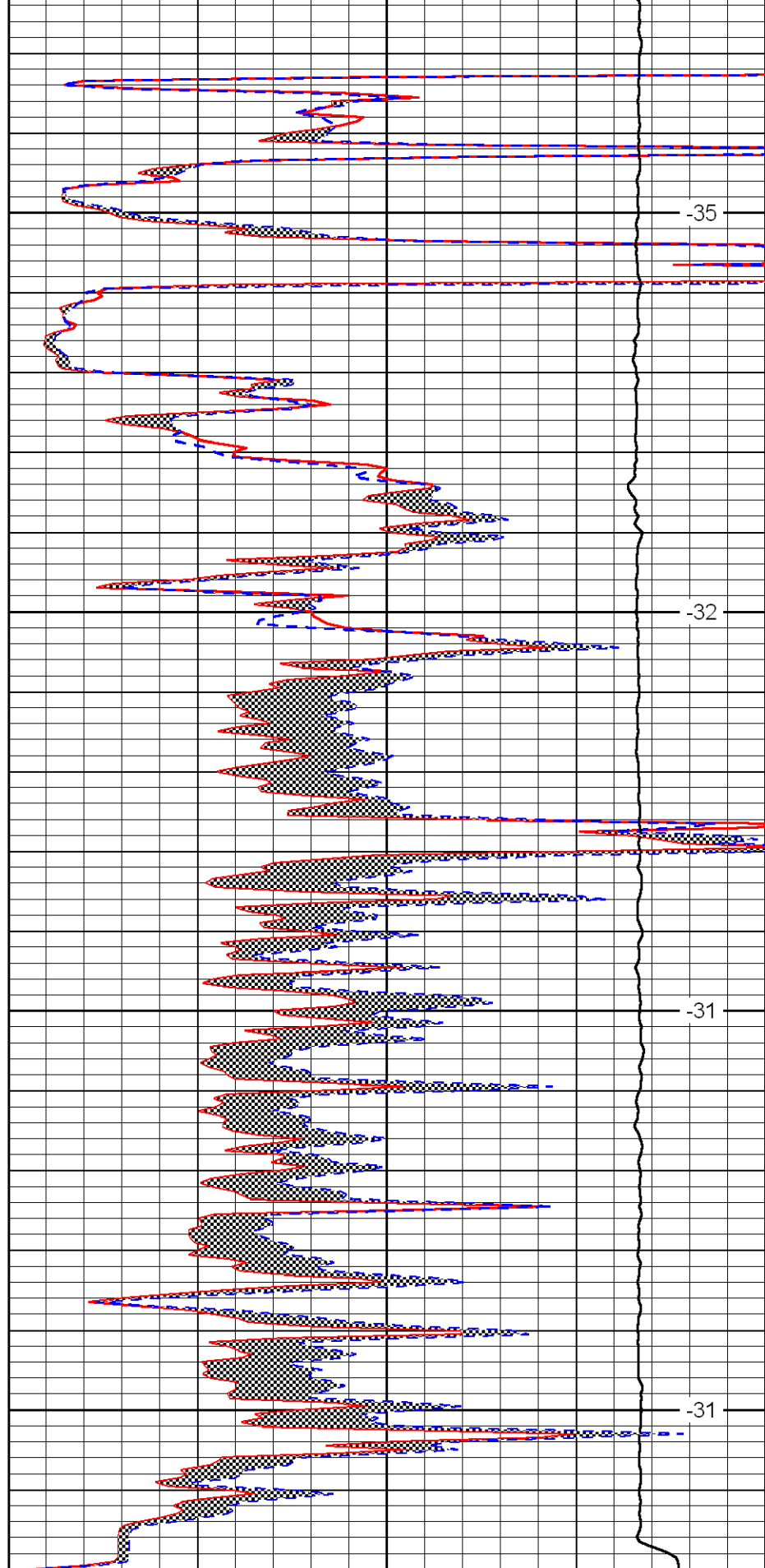
-35

-35



0	Gamma Ray	150
6	MCAL (GAPI)	16
2.875	Mud Cake (GAPI)	7.875
-200	SP	0

3450
3500
3550
3600



0	Micro Inverse 1 X 1	40
0	Micro Normal 2''	40
10000	Line Weight	0

-35
-32
-31
-31

LSPD

