



Dual Compensated  
Porosity Log

DIGITAL LOG (785) 625-3858

API No. 15-009-25440-00-00

Company LB Exploration, Inc.  
Well Hiss No. 2  
Field Merten Northeast  
County Barton  
State Kansas

Location SE - SW - NE - NE

Other Services DIL/MEL

Sec: 36 Twp: 18 S Rge: 15 W

Permanent Datum Ground Level Elevation 1899  
Log Measured From Kelly Bushing 8 Ft. Above Perm. Datum  
Drilling Measured From Kelly Bushing

Elevation K.B. 1907  
D.F. 1899  
G.L. 1899

Date 6/27/2010

Run Number One

Type Log CNL / CDL

Depth Driller 3610

Depth Logger 3616

Bottom Logged Interval 3595

Top Logged Interval 2800

Type Fluid In Hole Chemical

Salinity, PPM CL 8000

Density 9.2

Level Full

Max. Rec. Temp. F 112

Operating Rig Time 3 Hours

Equipment -- Location 15 Hays

Recorded By B. Becker

Witnessed By Josh Austin

Borehole Record				Casing Record			
Run No	Bit	From	To	Size	Wgt.	From	To
One	12.25	00	904	8.625	23#	00	904
Two	7.875	904	TD				

<<< Fold Here >>>

All interpretations are opinions based on inferences from electrical or other measurements and we cannot and do not guarantee the accuracy or correctness of any interpretation, and we shall not, except in the case of gross or willful negligence on our part, be liable or responsible for any loss, costs, damages, or expenses incurred or sustained by anyone resulting from any interpretation made by any of our officers, agents or employees. These interpretations are also subject to our general terms and conditions set out in our current Price Schedule.

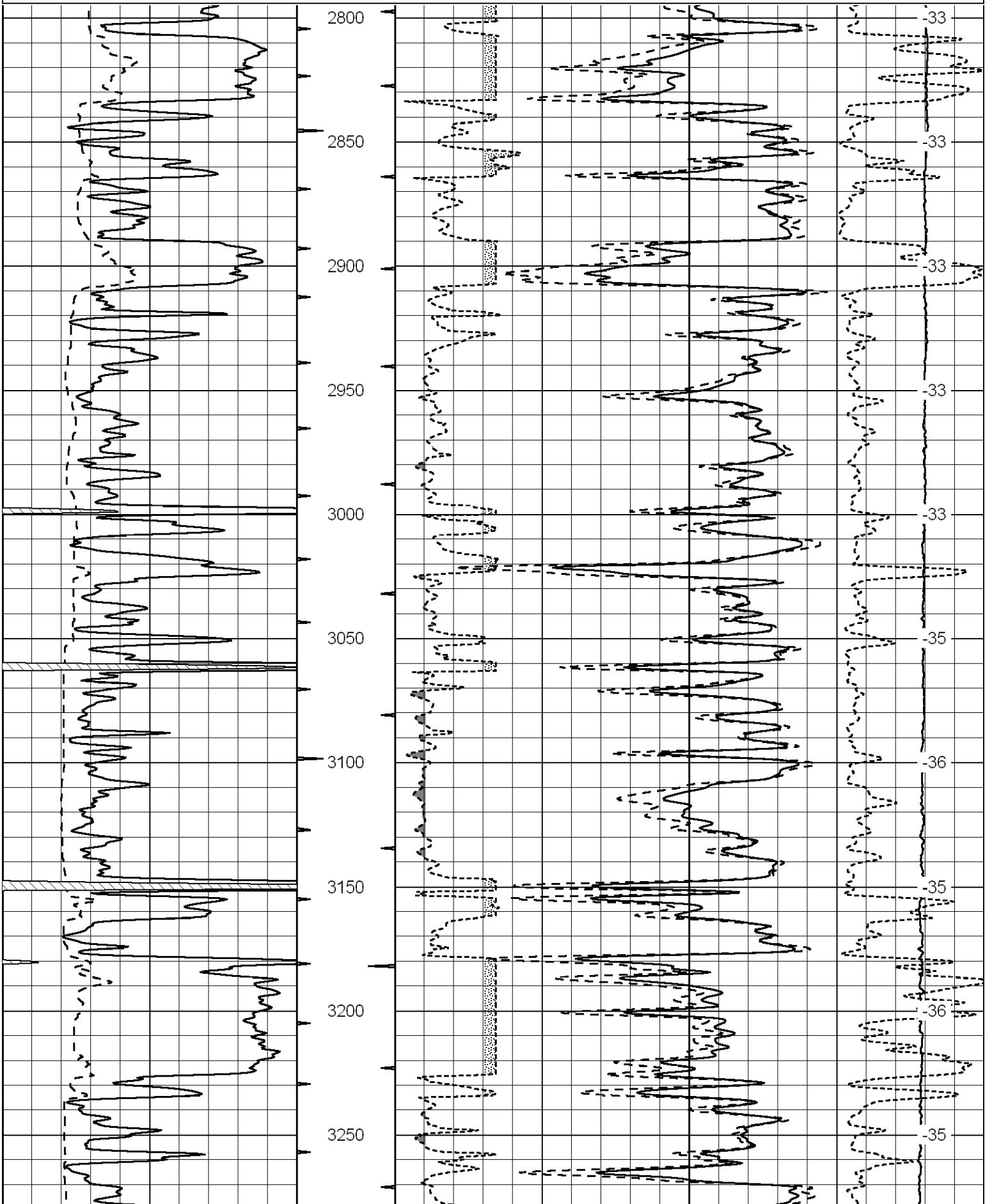
Comments

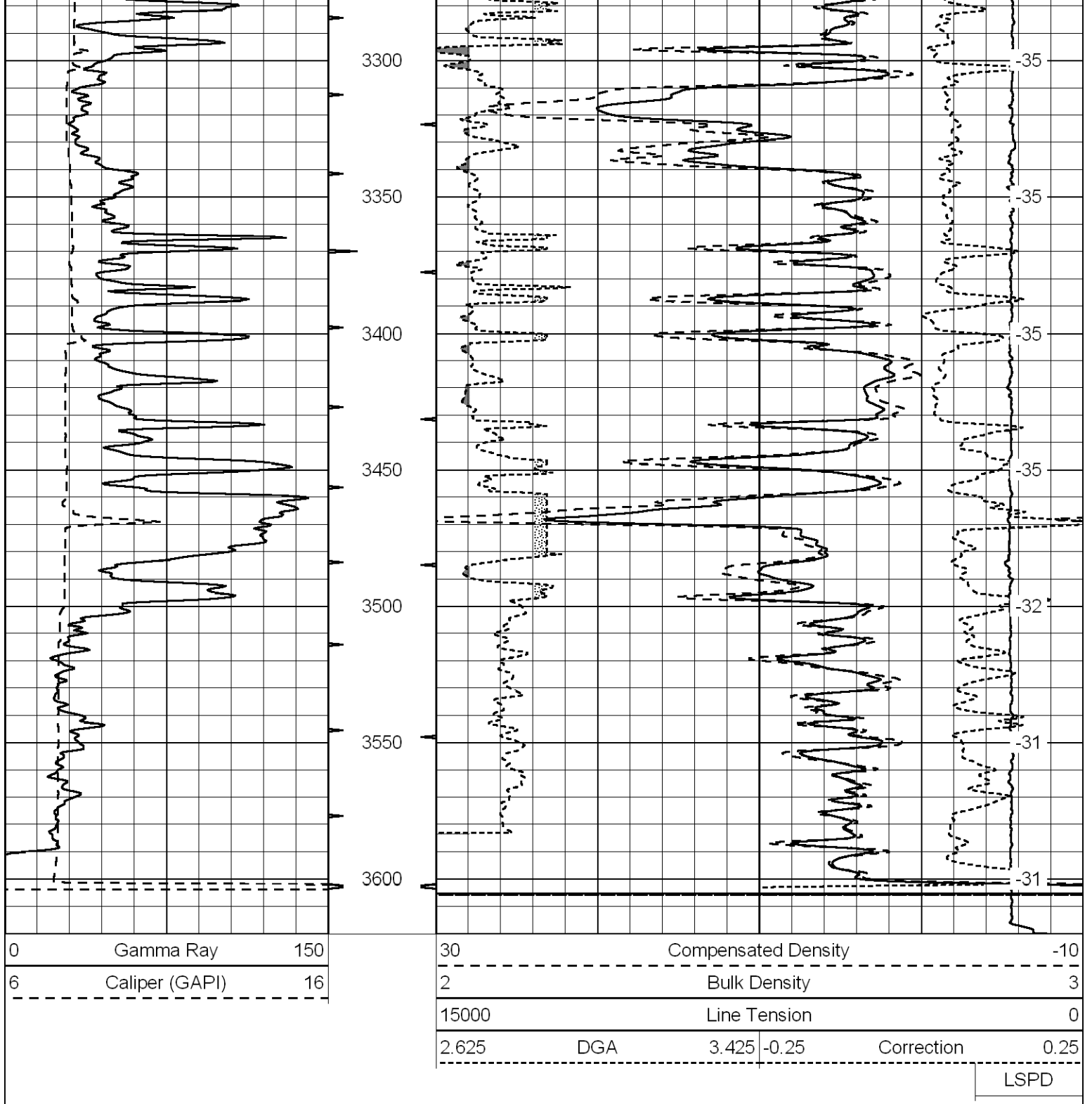
Thank you for using Log-Tech, Inc.  
(785) 625-3858  
Rush Center, Ks;  
East on 96 to Olmits Blacktop  
3/8 North;  
West Into along trees (just south of bridge)

Database File: lb hd.db  
Dataset Pathname: DIL/lbstk  
Presentation Format: cdl  
Dataset Creation: Sun Jun 27 23:59:45 2010  
Charted by: Depth in Feet scaled 1:600

0	Gamma Ray	150
6	Caliper (GAPI)	16

30	Compensated Density		-10
2	Bulk Density		3
15000	Line Tension		0
2.625	DGA	3.425	-0.25
Correction			0.25
LSPD			





Database File: lb hd.db  
 Dataset Pathname: DIL/lbstk  
 Presentation Format: cndlspec  
 Dataset Creation: Sun Jun 27 23:59:45 2010  
 Charted by: Depth in Feet scaled 1:240

0	Gamma Ray	150	30	CNLS	-10
6	Caliper (GAPI)	16	30	Compensated Density (2.71 ma)	-10
2.625	DGA	3.425 -0.25	Correction	0.25	
10000	Line Tension	0			

