



# Dual Induction Log

DIGITAL LOG (785) 625-3858

API No.	15-009-25440-00-00	
Company	LB Exploration, Inc.	
Well	Hiss No. 2	
Field	Merten Northeast	
County	Barton	State
Location	SE - SW - NE - NE	
	Sec: 36	Twp: 18 S Rge: 15 W
Other Services	CNL/CDL MEL	
Elevation	K.B. 1907 D.F. 1899 G.L. 1899	

Permanent Datum	Ground Level	Elevation	1899
Log Measured From	Kelly Bushing	8	Ft. Above Perm. Datum
Drilling Measured From	Kelly Bushing		
Date	6/27/2010		
Run Number	One		
Depth Driller	3610		
Depth Logger	3616		
Bottom Logged Interval	3615		
Top Log Interval	900		
Casing Driller	8.625 @ 904		
Casing Logger	900		
Bit Size	7.875		
Type Fluid in Hole	Chemical		
Salinity, ppm CL	8000		
Density / Viscosity	9.2	51	
pH / Fluid Loss	10.0	8.0	
Source of Sample	Flowline		
Rm @ Meas. Temp	0.50	@	80
Rmf @ Meas. Temp	0.38	@	80
Rmc @ Meas. Temp	0.68	@	80
Source of Rmf / Rmc	Charts		
Rm @ BHT	0.36	@	112
Operating Rig Time	3 Hours		
Max Rec. Temp. F	112		
Equipment Number	15		
Location	Hays		
Recorded By	B. Becker		
Witnessed By	Josh Austin		

<<< Fold Here >>>

All interpretations are opinions based on inferences from electrical or other measurements and we cannot and do not guarantee the accuracy or correctness of any interpretation, and we shall not, except in the case of gross or willful negligence on our part, be liable or responsible for any loss, costs, damages, or expenses incurred or sustained by anyone resulting from any interpretation made by any of our officers, agents or employees. These interpretations are also subject to our general terms and conditions set out in our current Price Schedule.

### Comments

Thank you for using Log-Tech, Inc.  
 (785) 625-3858  
 Rush Center, Ks;  
 East on 96 to Olmits Blacktop  
 3/8 North;  
 West Into along trees (just south of bridge)

Database File: lb hd.db  
 Dataset Pathname: DIL/lbstk  
 Presentation Format: dil2in  
 Dataset Creation: Sun Jun 27 23:59:45 2010  
 Charted by: Depth in Feet scaled 1:600

0 Gamma Ray 150  
-200 SP 0

0 Shallow Resistivity 50  
0 Deep Resistivity 50

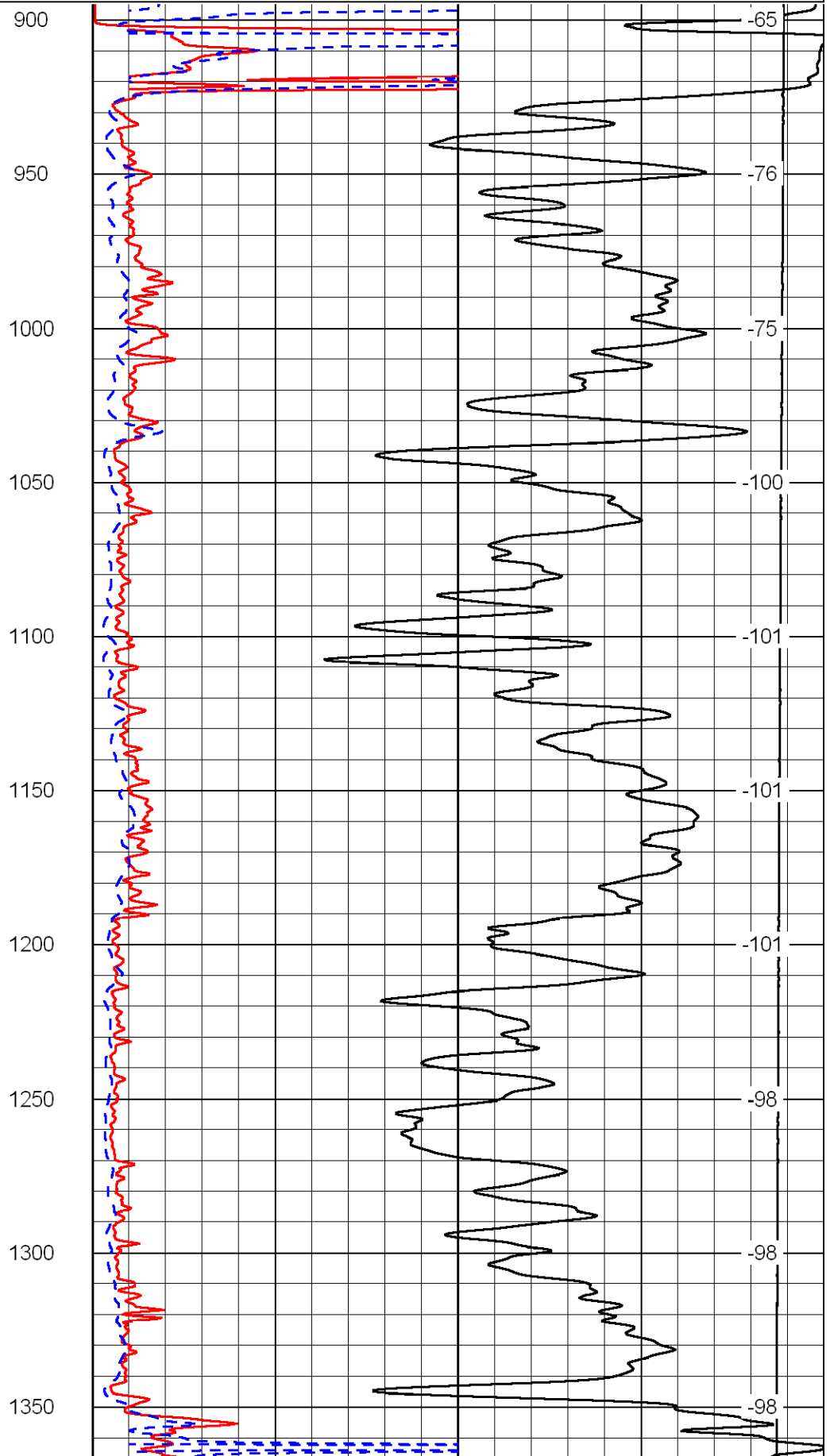
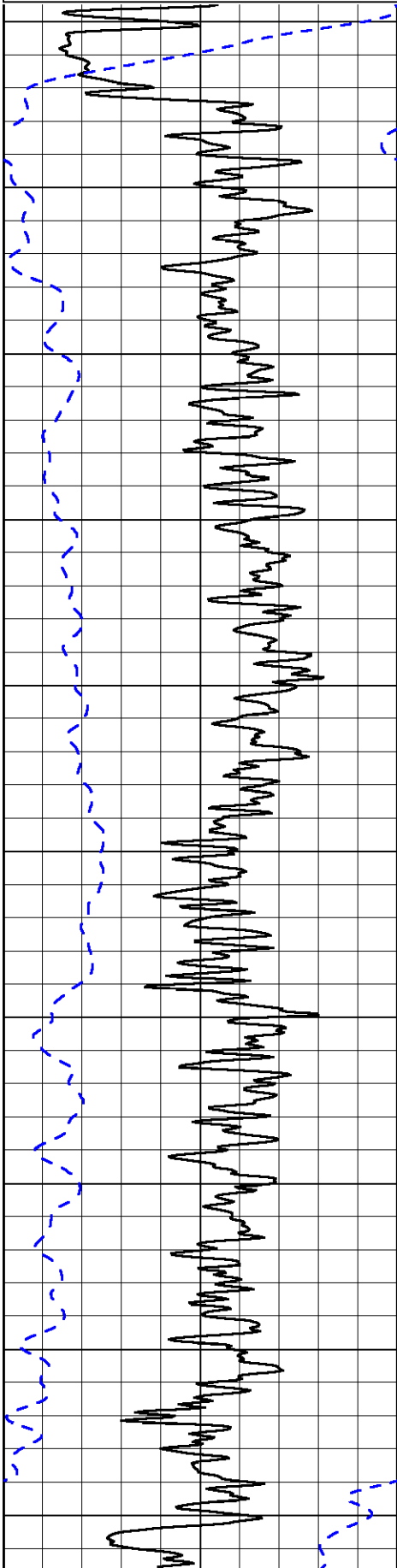
LSPD

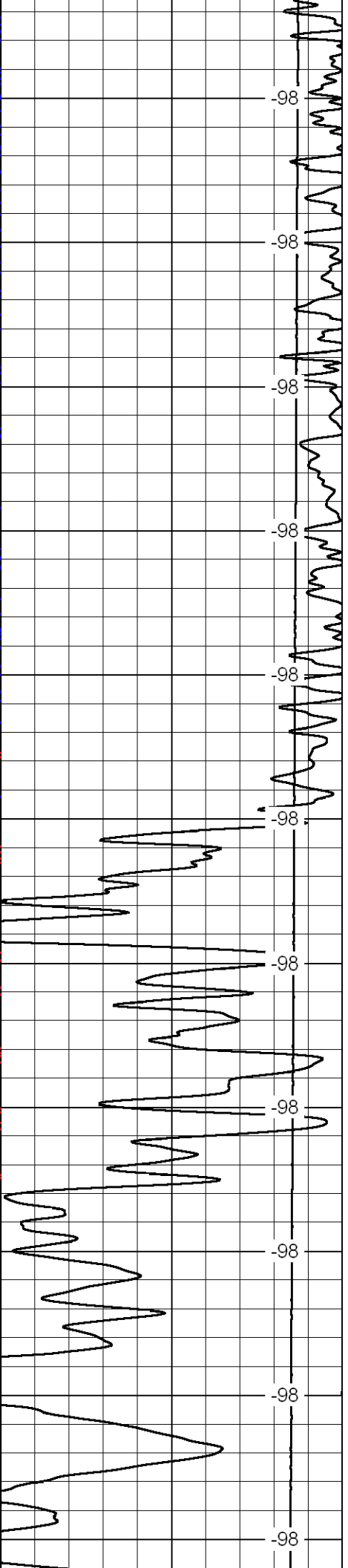
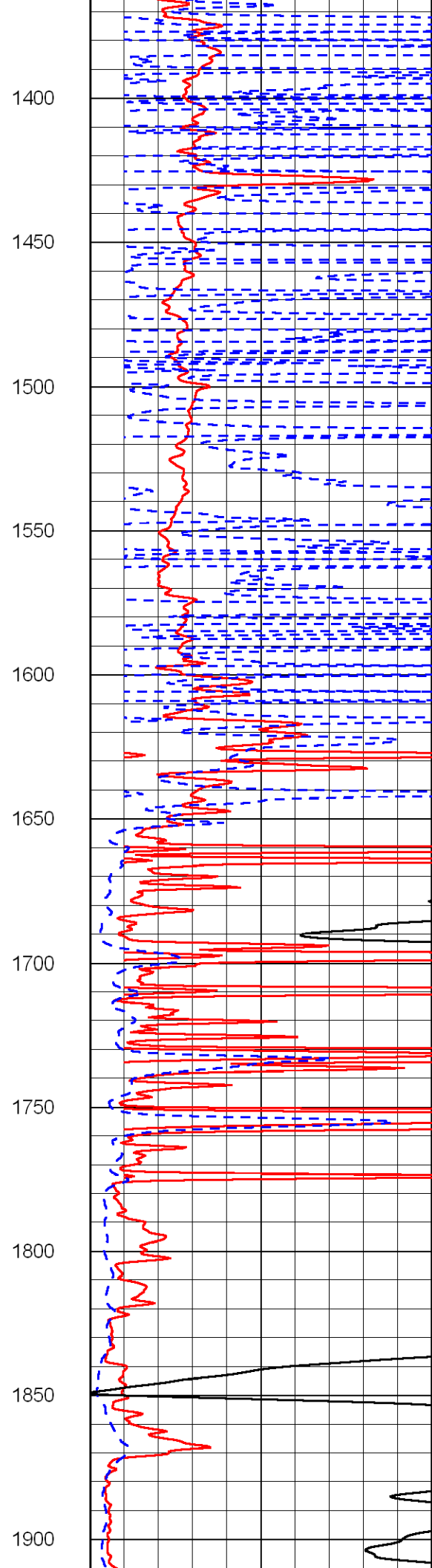
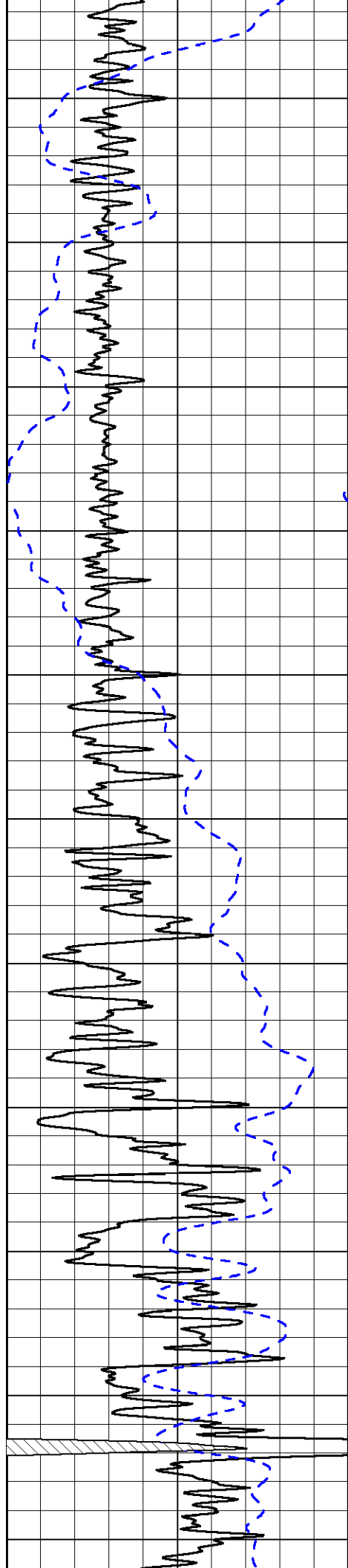
1000 Conductivity 0

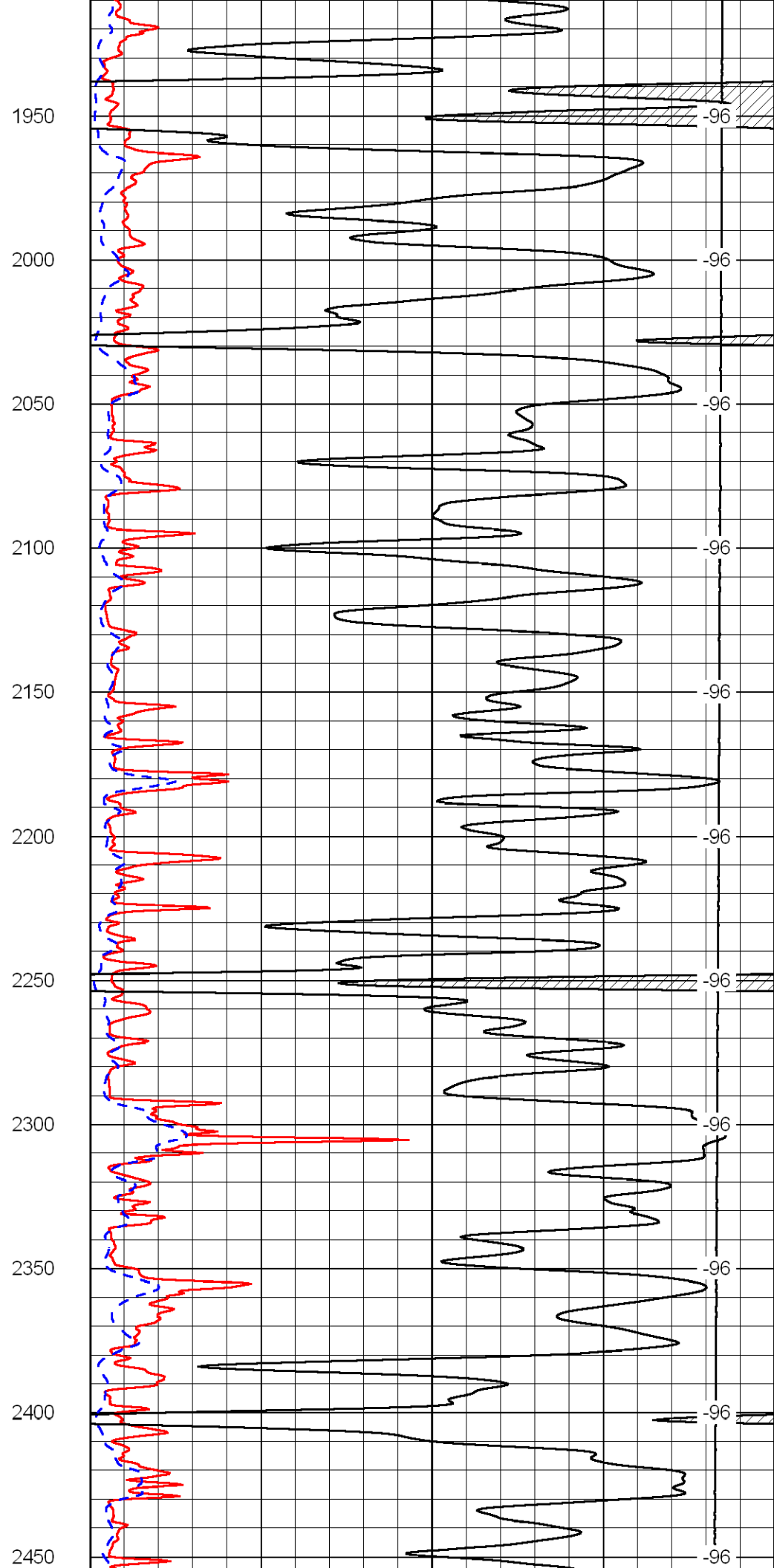
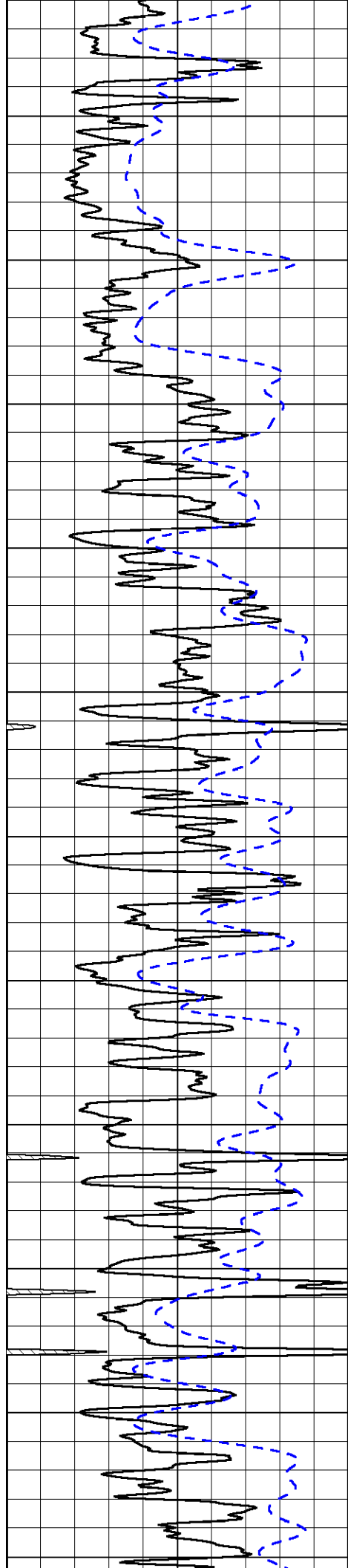
15000 Line Tension 0

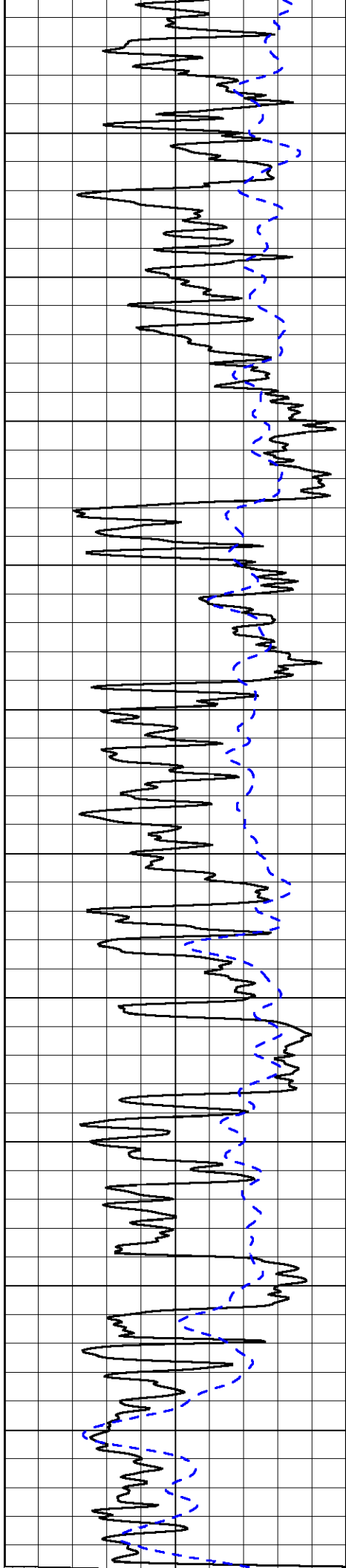
50 Shallow Resistivity 500

50 Deep Resistivity 500









2500

2550

2600

2650

2700

2750

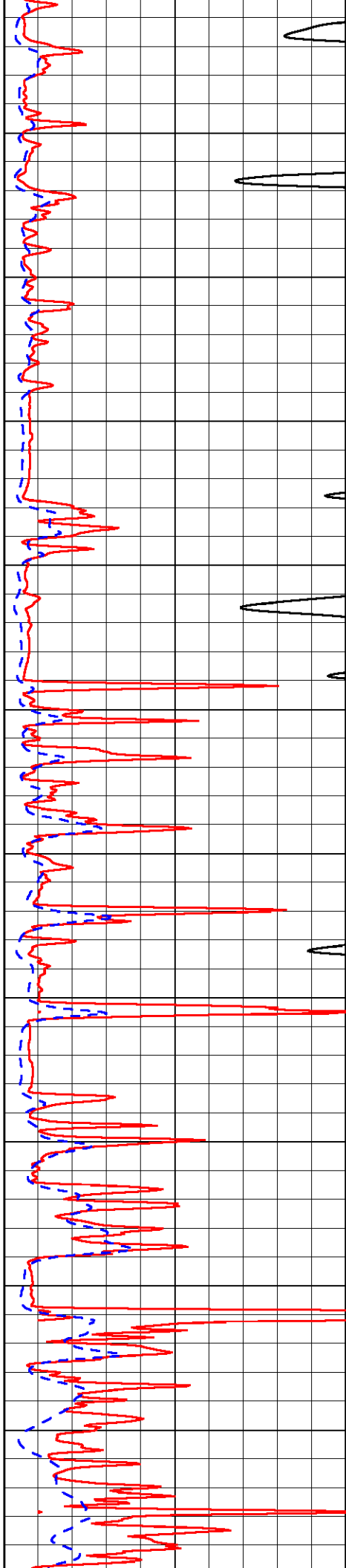
2800

2850

2900

2950

3000



-96

-96

-94

-93

-93

-60

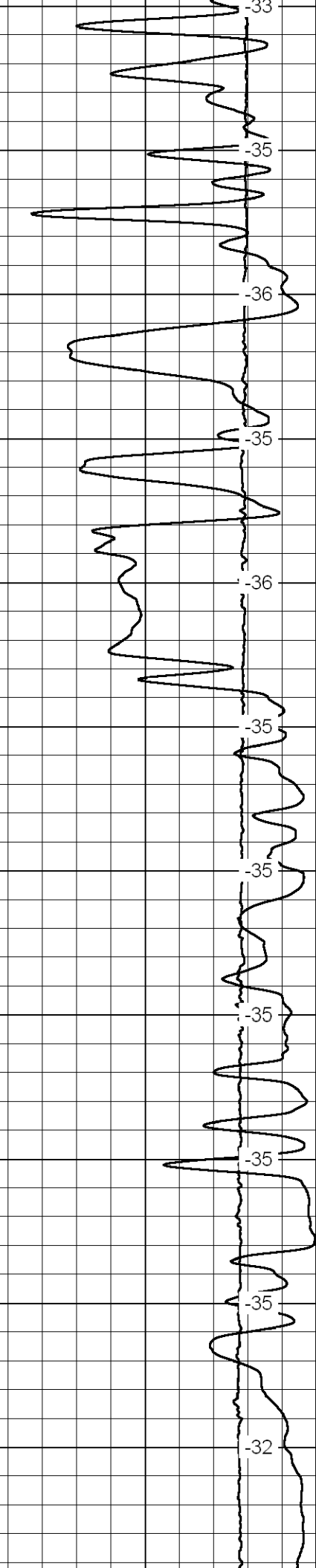
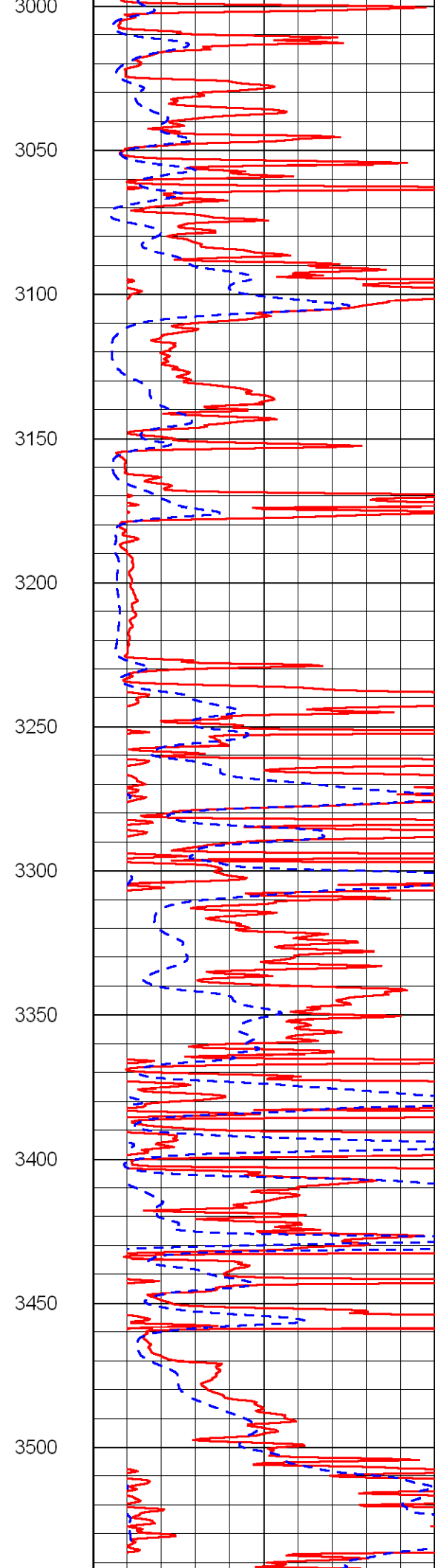
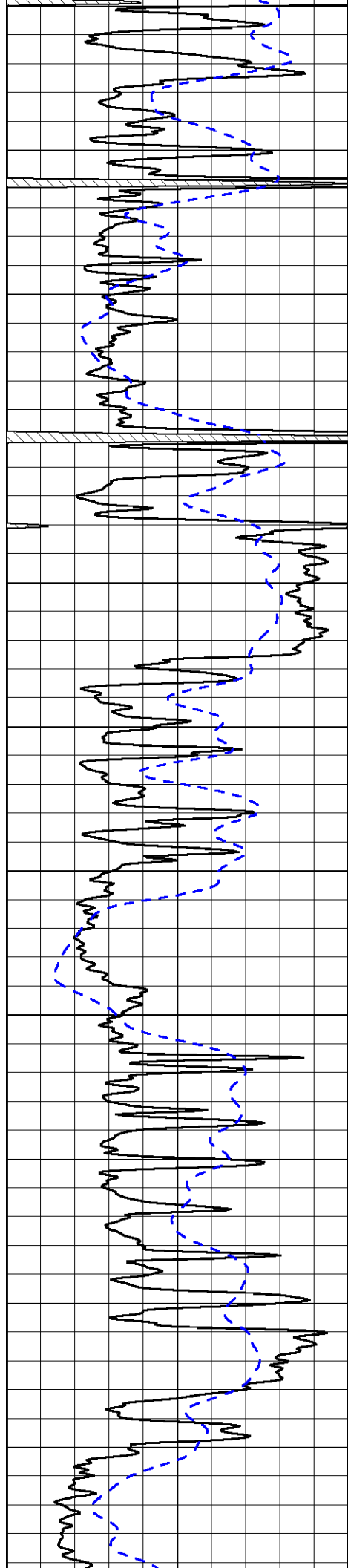
-33

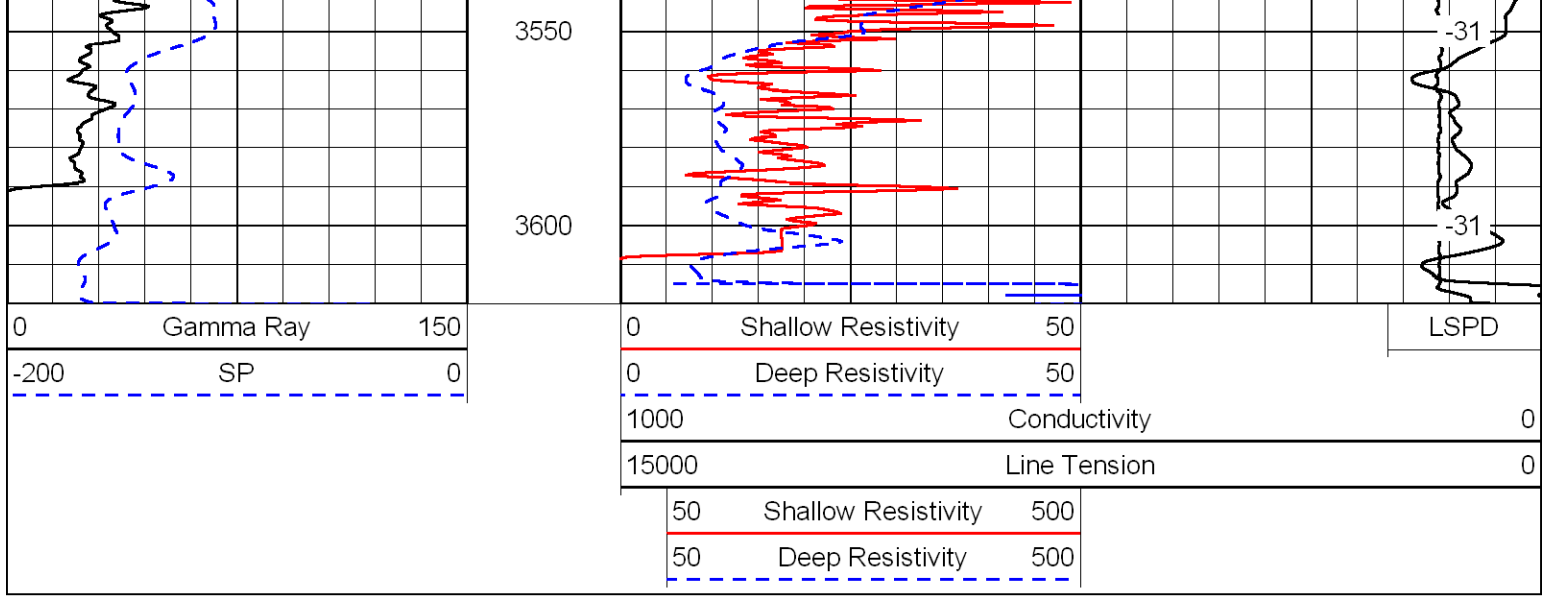
-33

-33

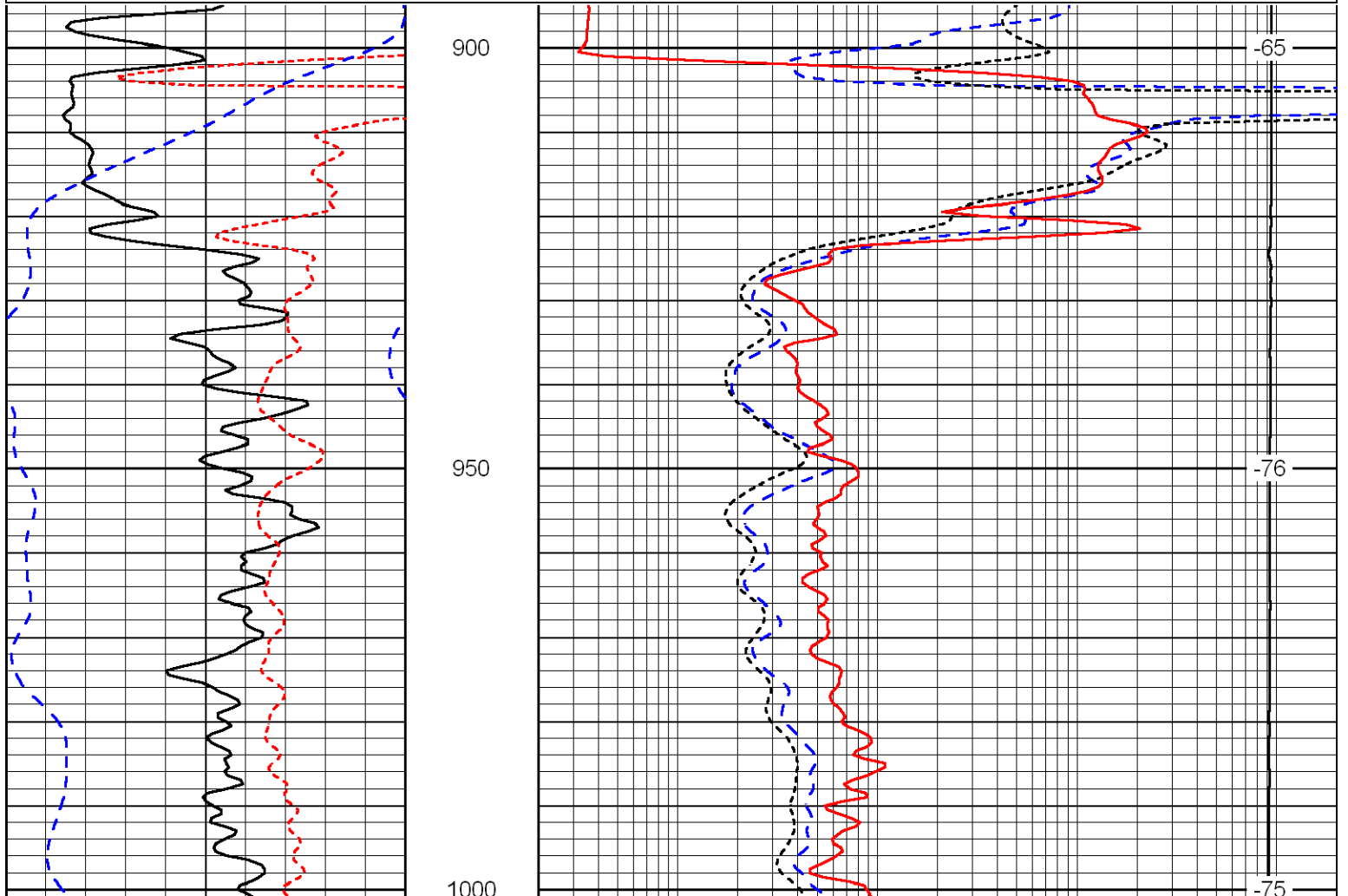
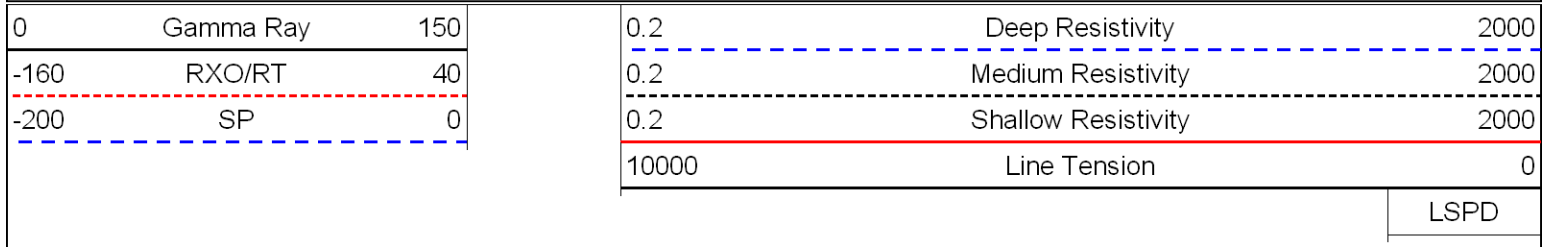
-33

-33





Database File: lb hd.db  
 Dataset Pathname: DIL/lbstk  
 Presentation Format: dil  
 Dataset Creation: Sun Jun 27 23:59:45 2010  
 Charted by: Depth in Feet scaled 1:240



0	Gamma Ray	150
-160	RXO/RT	40
-200	SP	0

0.2	Deep Resistivity	2000
0.2	Medium Resistivity	2000
0.2	Shallow Resistivity	2000
10000	Line Tension	0

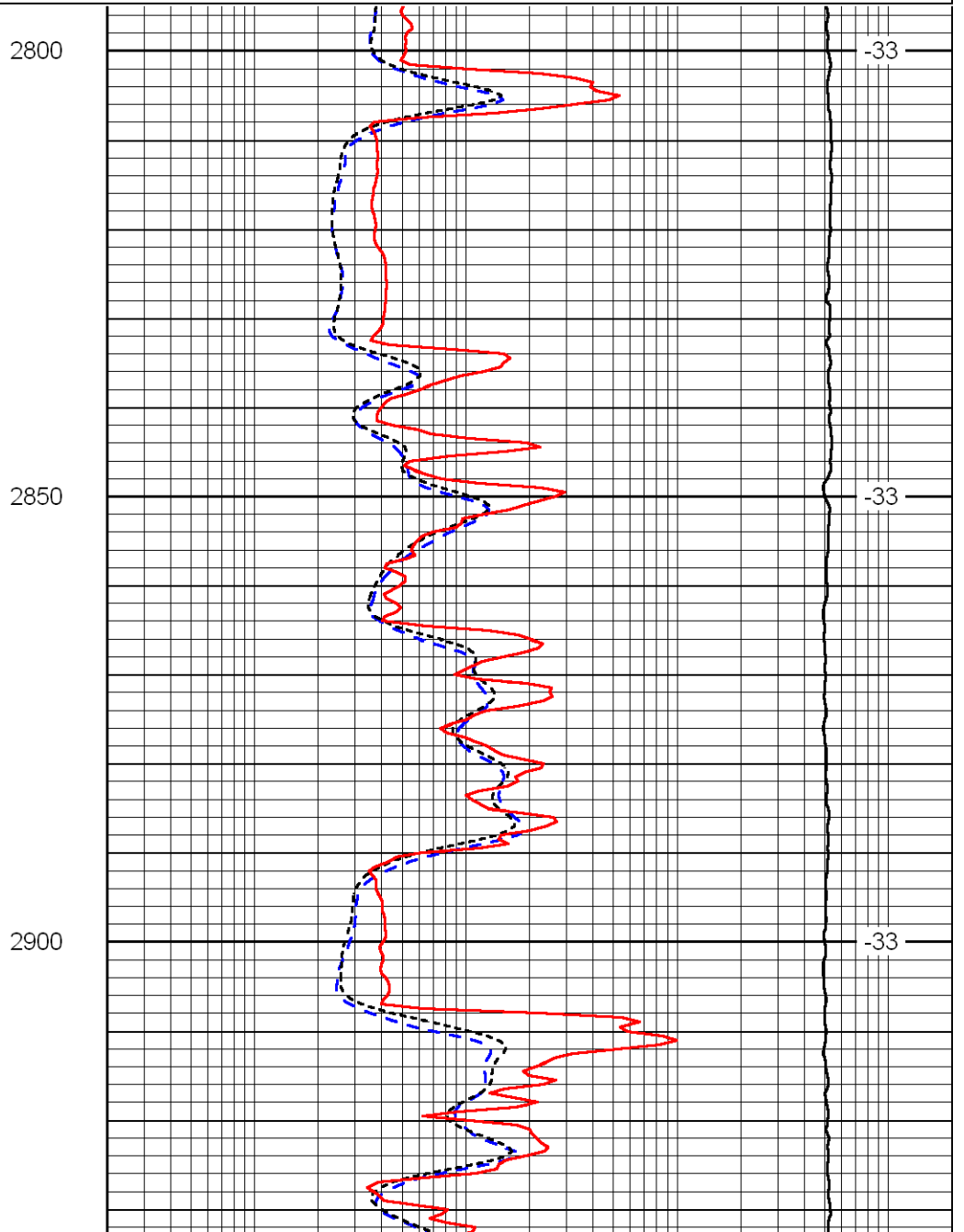
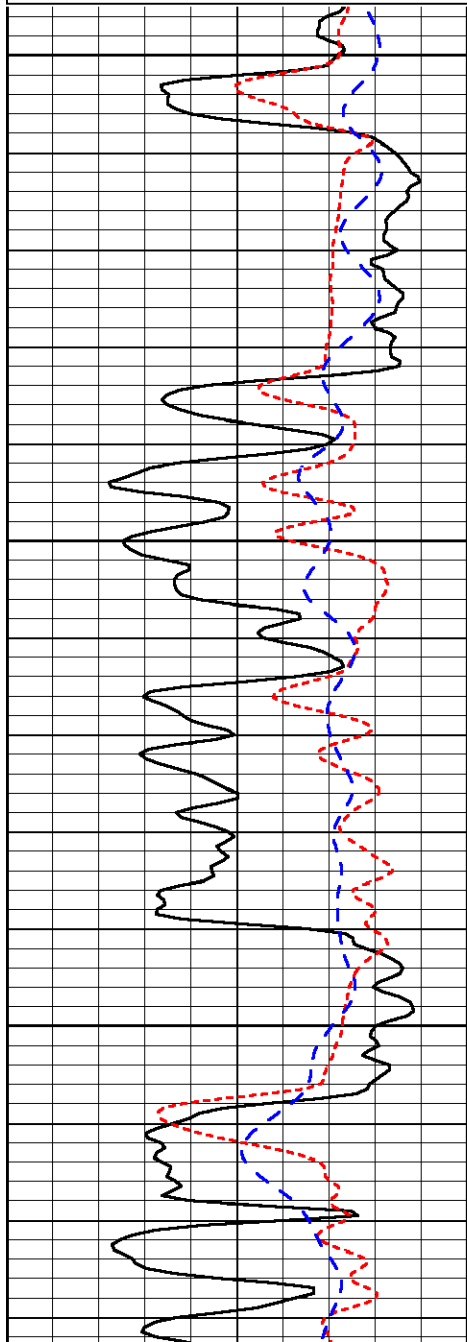
LSPD

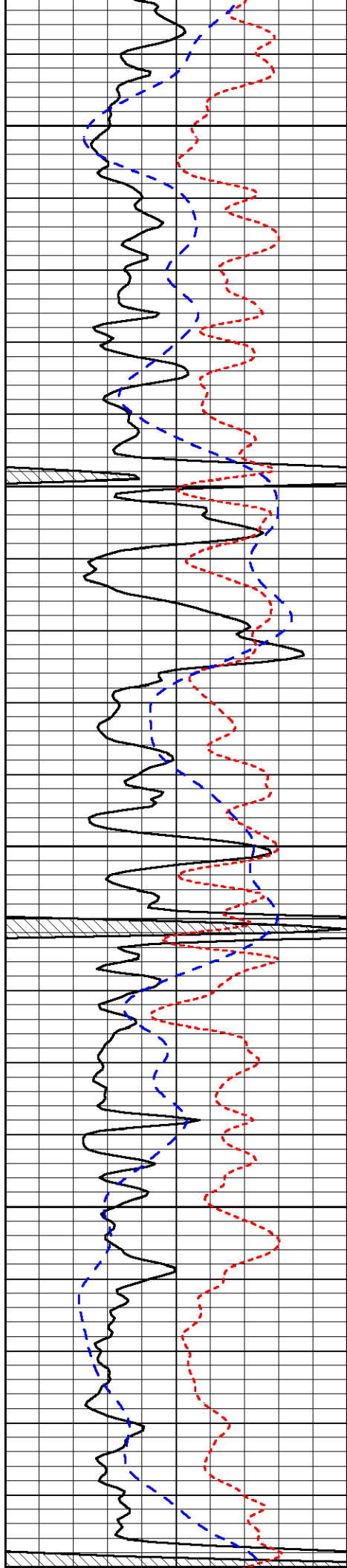
Database File: lb hd.db  
 Dataset Pathname: DIL/lbstk  
 Presentation Format: dil  
 Dataset Creation: Sun Jun 27 23:59:45 2010  
 Charted by: Depth in Feet scaled 1:240

0	Gamma Ray	150
-160	RXO/RT	40
-200	SP	0

0.2	Deep Resistivity	2000
0.2	Medium Resistivity	2000
0.2	Shallow Resistivity	2000
10000	Line Tension	0

LSPD





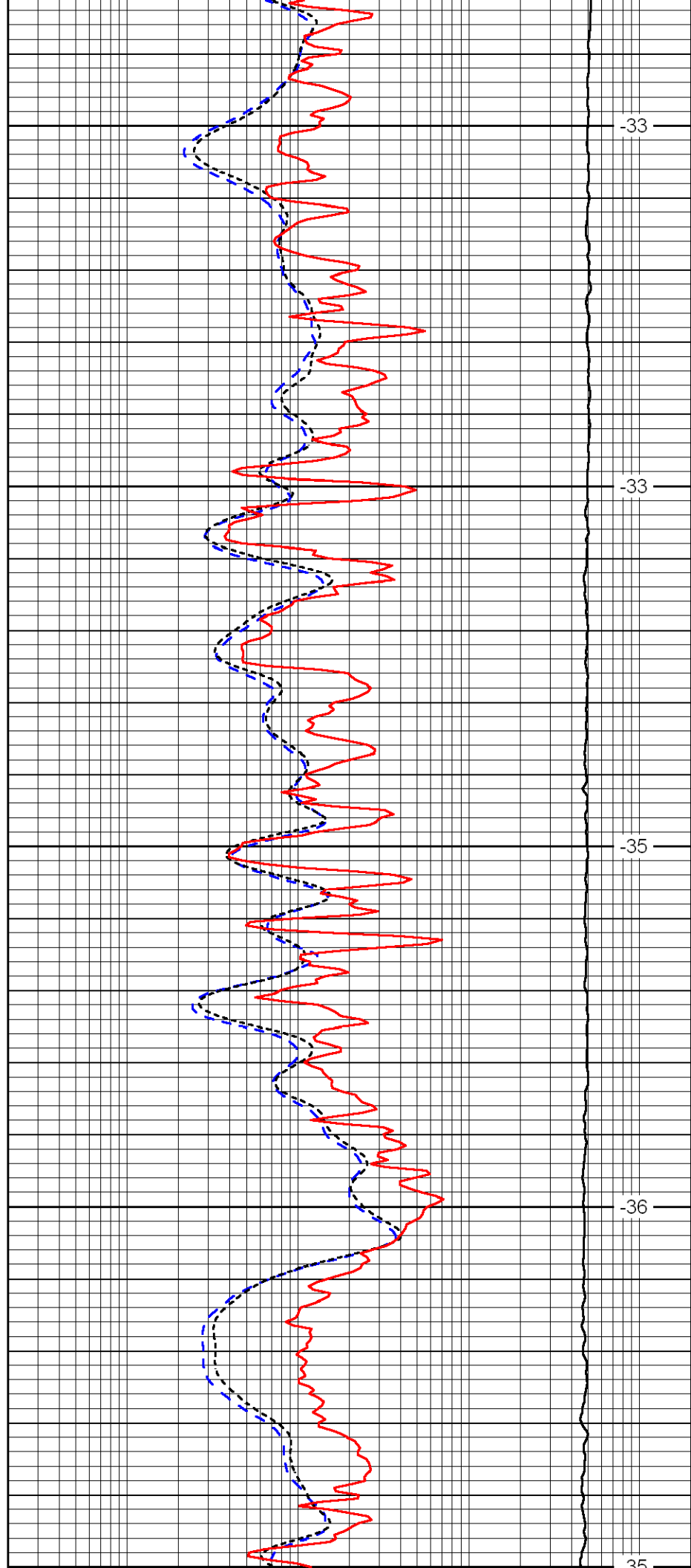
2950

3000

3050

3100

3150



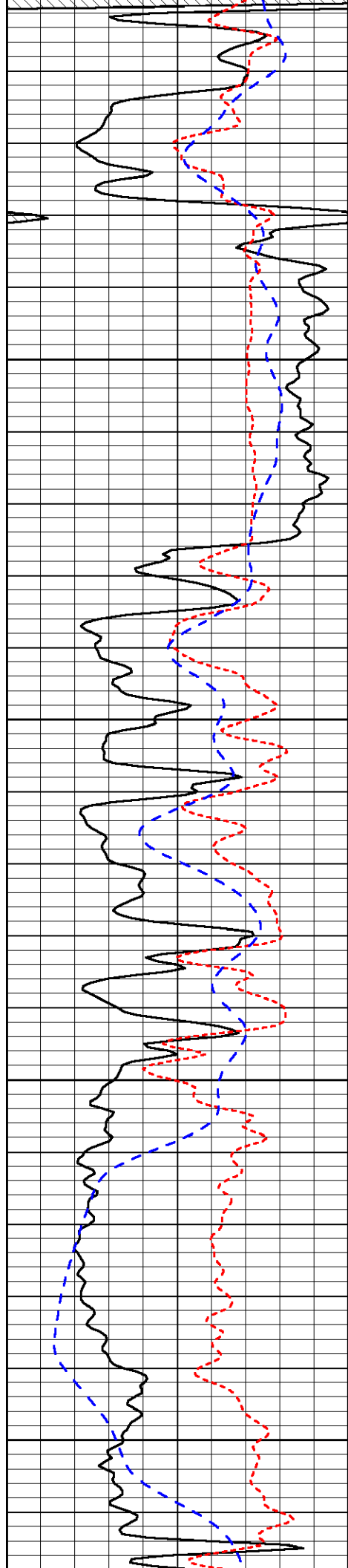
-33

-33

-35

-36

-35



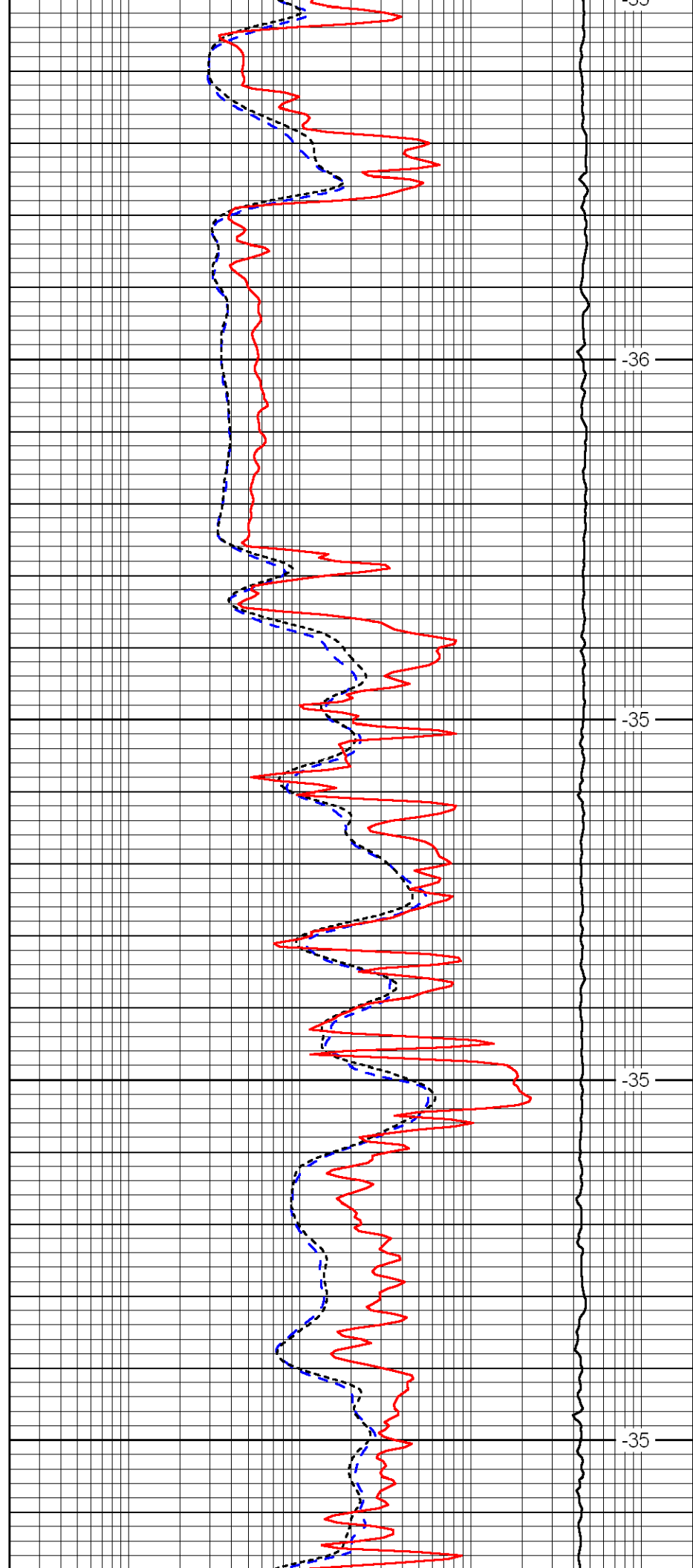
3150

3200

3250

3300

3350



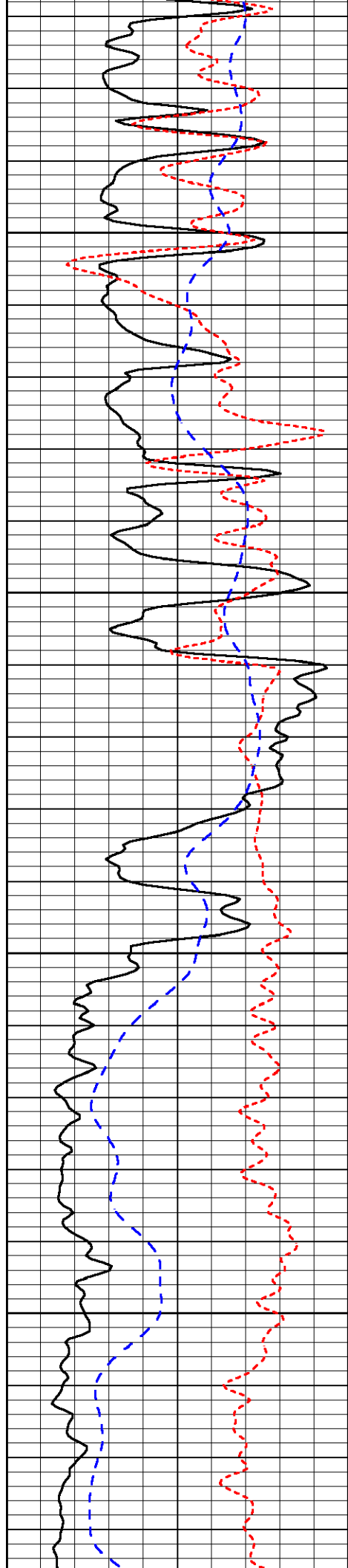
-33

-36

-35

-35

-35

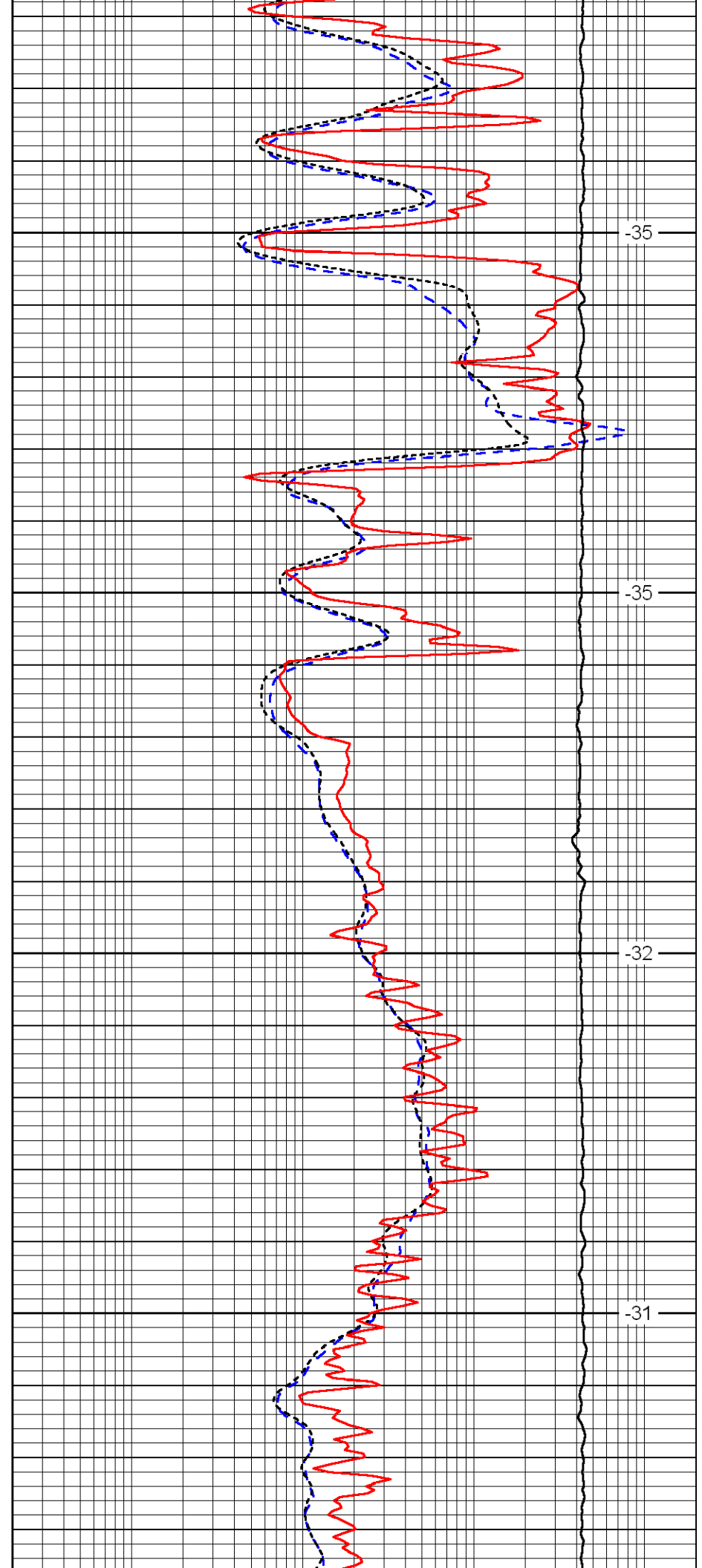


3400

3450

3500

3550

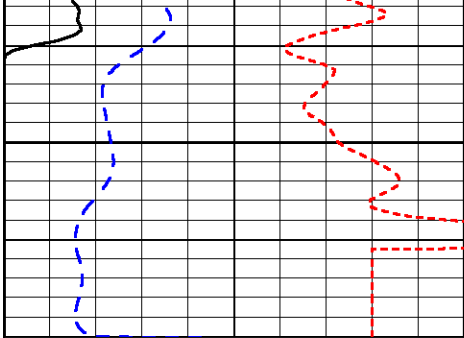


-35

-35

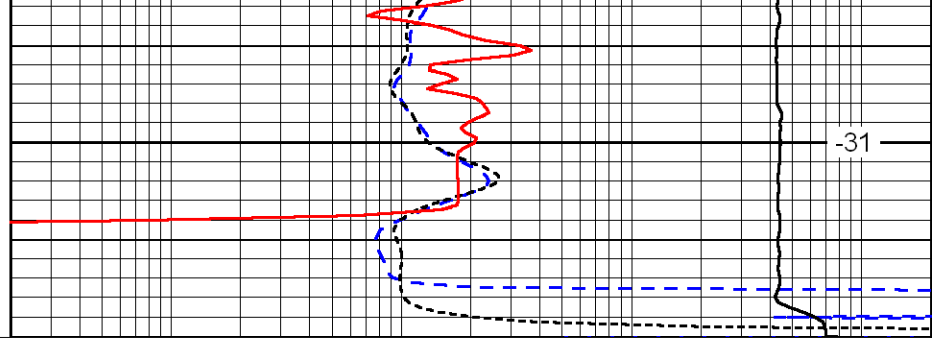
-32

-31



3600

0	Gamma Ray	150
-160	RXO/RT	40
-200	SP	0



-31

0.2	Deep Resistivity	2000
0.2	Medium Resistivity	2000
0.2	Shallow Resistivity	2000
10000	Line Tension	0

LSPD