



Microresistivity Log

DIGITAL LOG (785) 625-3858

API No.	15-095-22,208-00-00		
Company	Messenger Petroleum, Inc.		
Well	LeRoy No. 1		
Field	Willowdale		
County	Kingman	State	Kansas
Location	1320' FNL & 330' FEL		
Sec: 15	Twp: 29S	Rge: 9W	
Permanent Datum	Ground Level	Elevation	1686
Log Measured From	Kelly Bushing	9 Ft. Above Perm. Datum	
Drilling Measured From	Kelly Bushing		
		Other Services	CNL/CDL DIL
		Elevation	K.B. 1695 D.F. 1686 G.L. 1686

Date	06/13/2010	
Run Number	Two	
Depth Driller	4505	
Depth Logger	4506	
Bottom Logged Interval	4505	
Top Log Interval	200	
Casing Driller	8.625 @ 222	
Casing Logger	222	
Bit Size	7.875	
Type Fluid in Hole	Chemical	
Salinity, ppm CL	5,000	
Density / Viscosity	9.2	42
pH / Fluid Loss	9.5	11.2
Source of Sample	Flowline	
Rm @ Meas. Temp	.58 @	82
Rmf @ Meas. Temp	.44 @	82
Rmc @ Meas. Temp	.78 @	82
Source of Rmf / Rmc	Charts	
Rm @ BHT	.37 @	123
Operating Rig Time	6 Hours	
Max Rec. Temp. F	123	
Equipment Number	10	
Location	Hays	
Recorded By	Jerrold Long	
Witnessed By	Jon Messenger	
		Jim Schuller

<<< Fold Here >>>

All interpretations are opinions based on inferences from electrical or other measurements and we cannot and do not guarantee the accuracy or correctness of any interpretation, and we shall not, except in the case of gross or willful negligence on our part, be liable or responsible for any loss, costs, damages, or expenses incurred or sustained by anyone resulting from any interpretation made by any of our officers, agents or employees. These interpretations are also subject to our general terms and conditions set out in our current Price Schedule.

Comments

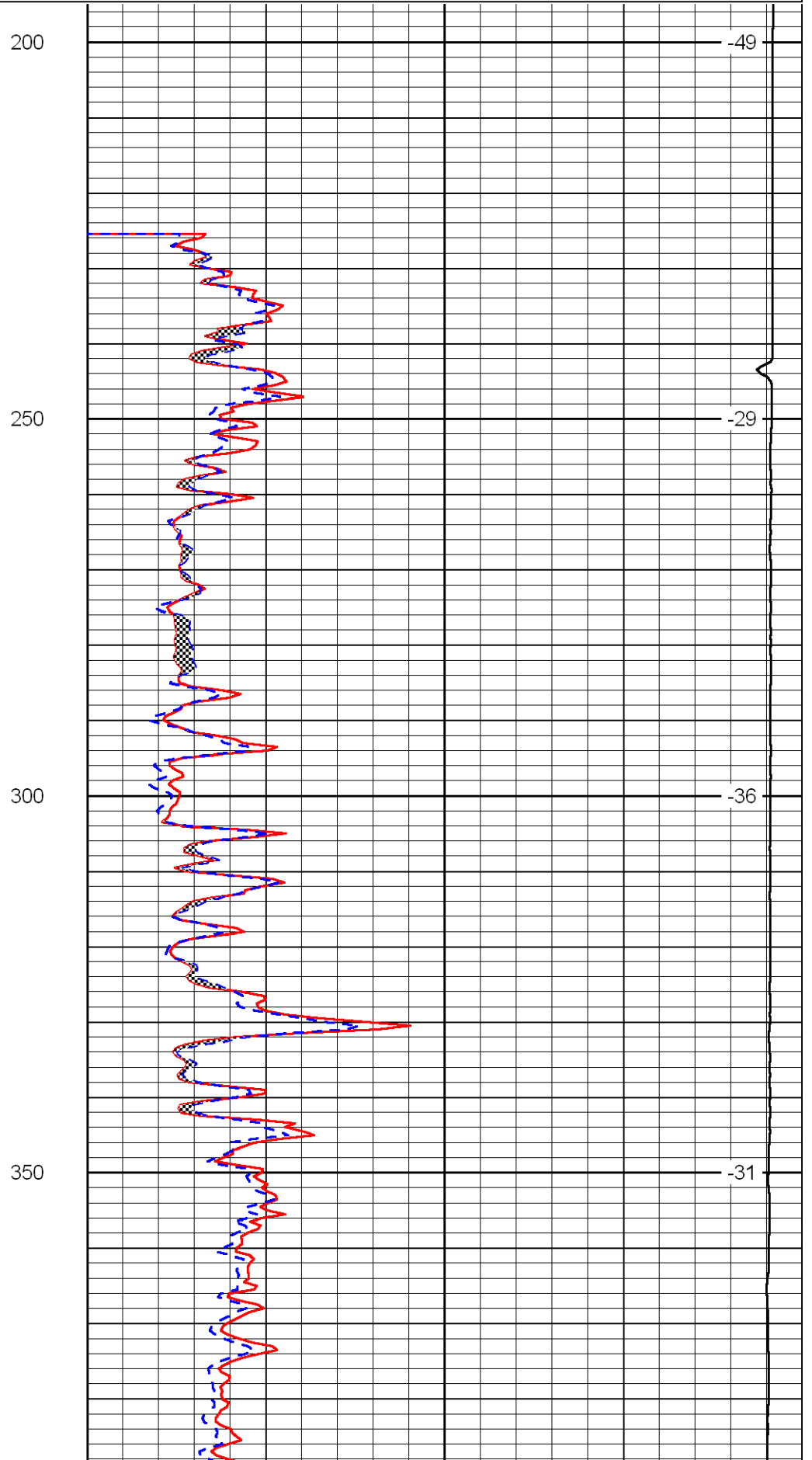
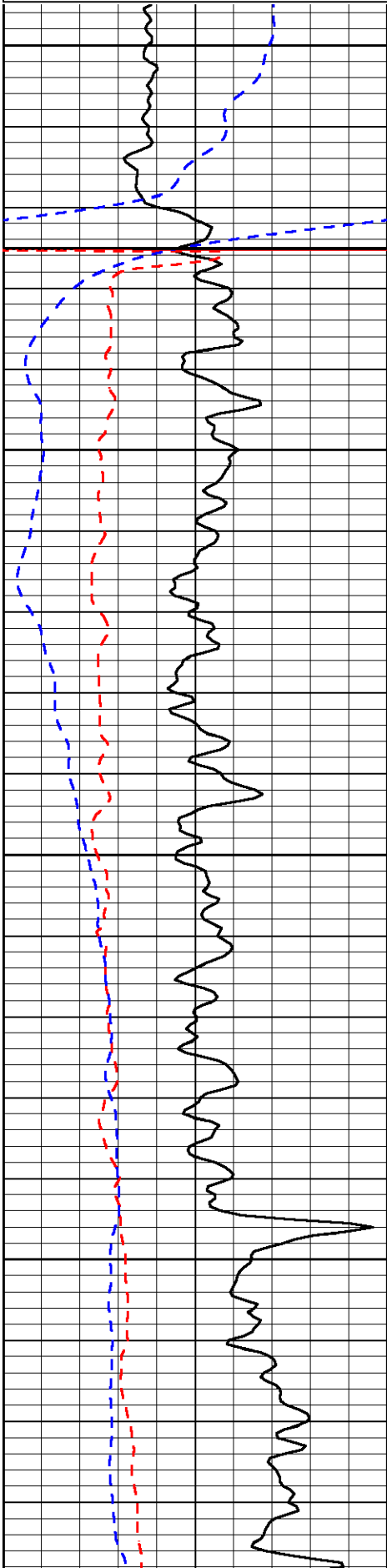
Thank you for using Log-Tech, Inc.
(785) 625-3858

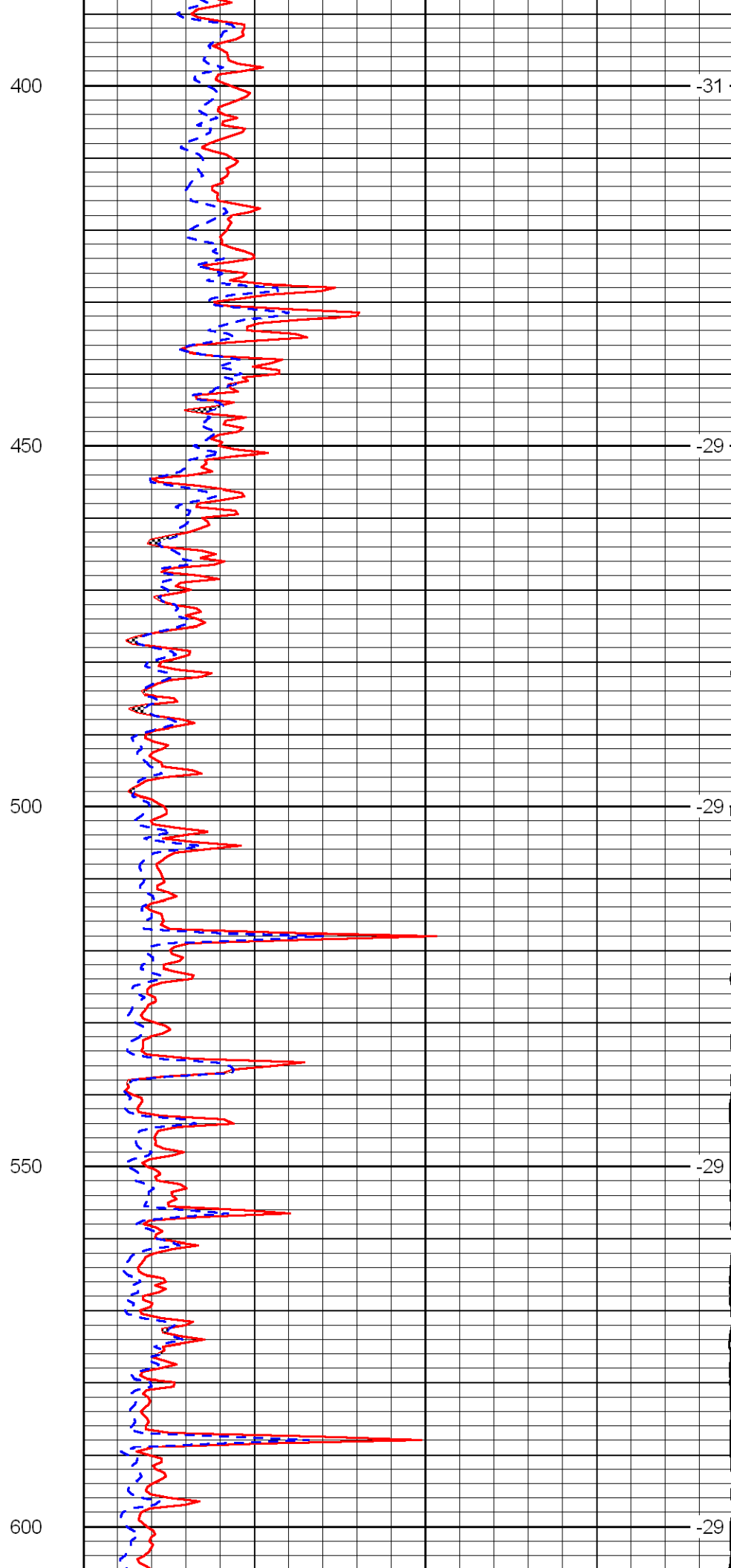
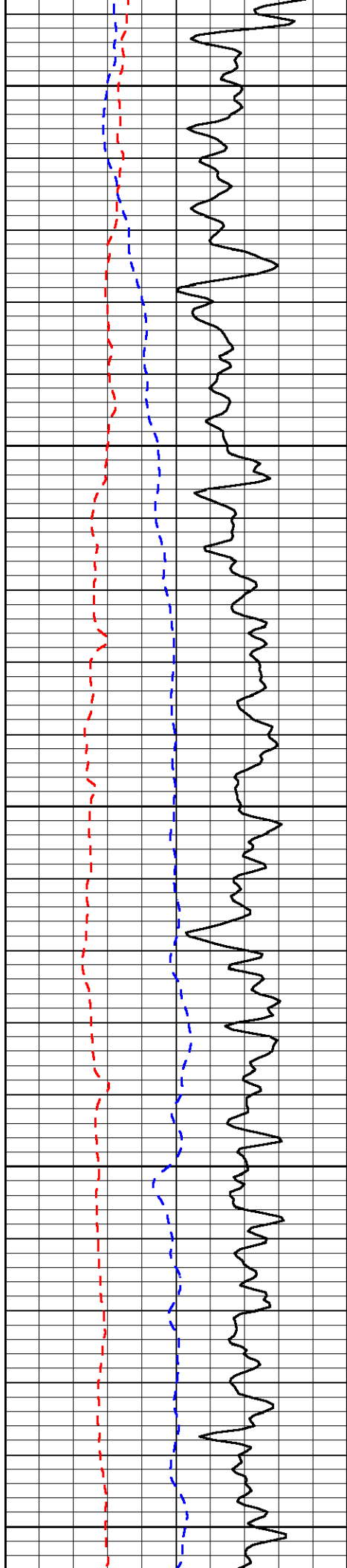
8 1/4 S of 54 on Zenda Blacktop, W into

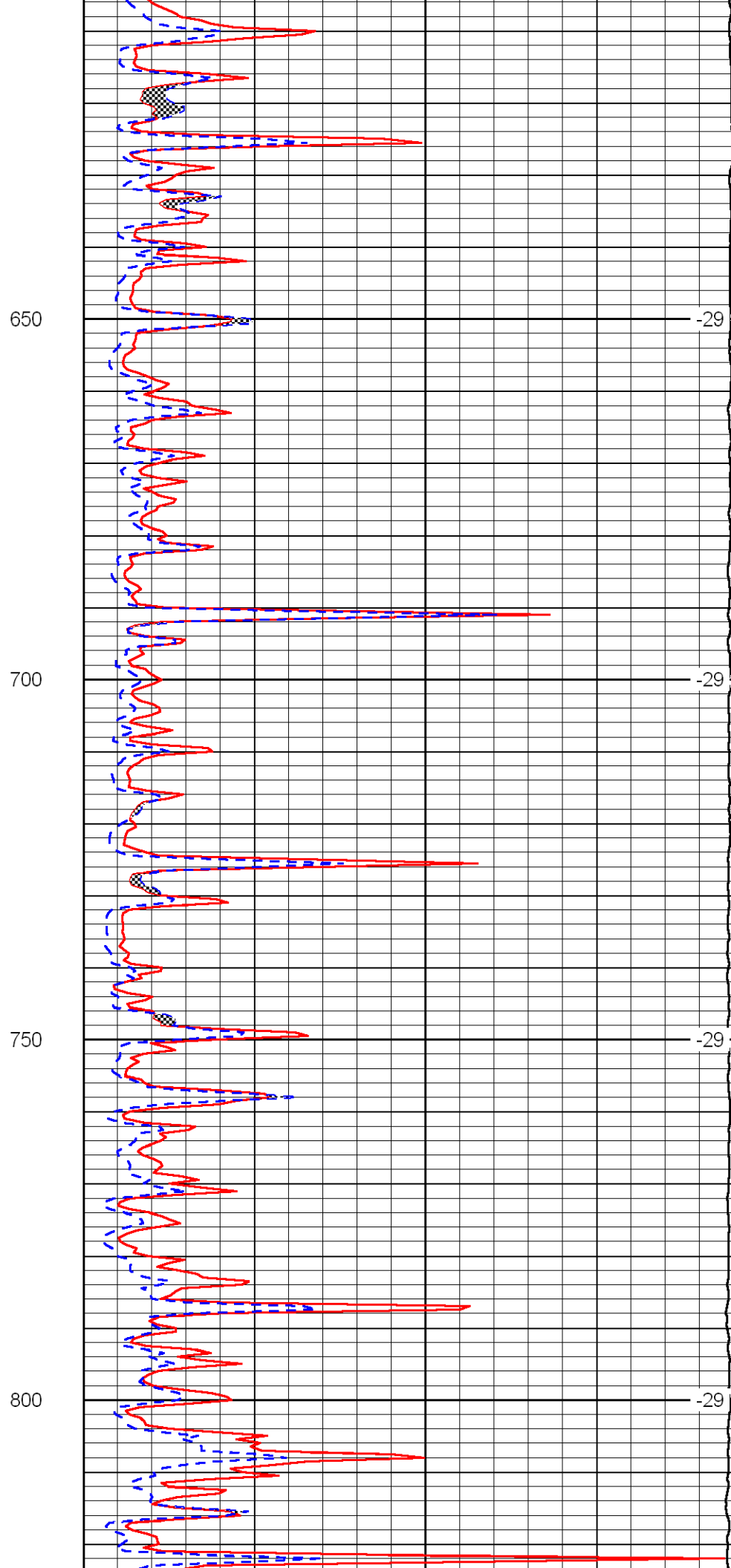
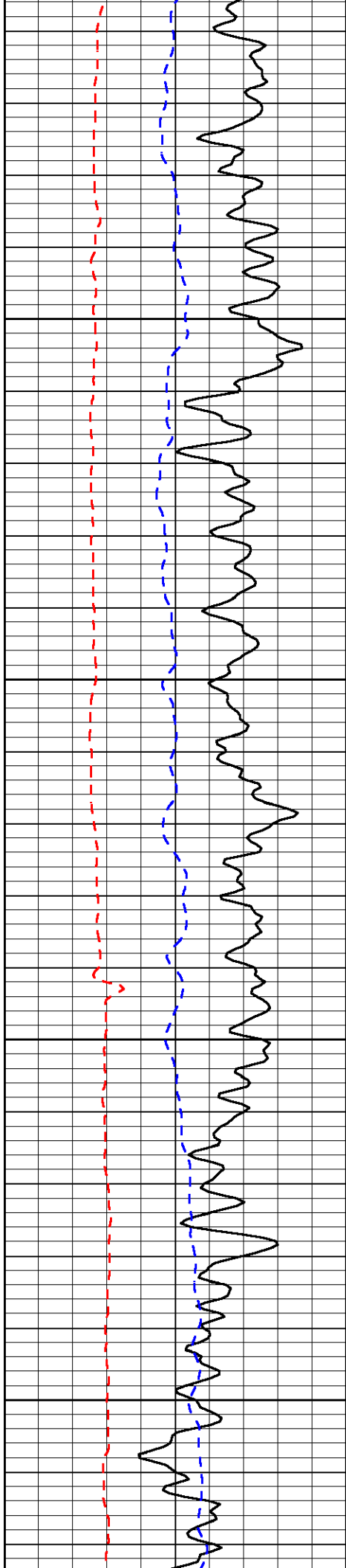
Database File: messenger_leroy_1hd.db
 Dataset Pathname: dil/messstck
 Presentation Format: micro
 Dataset Creation: Mon Jun 14 00:23:10 2010
 Charted by: Depth in Feet scaled 1:240

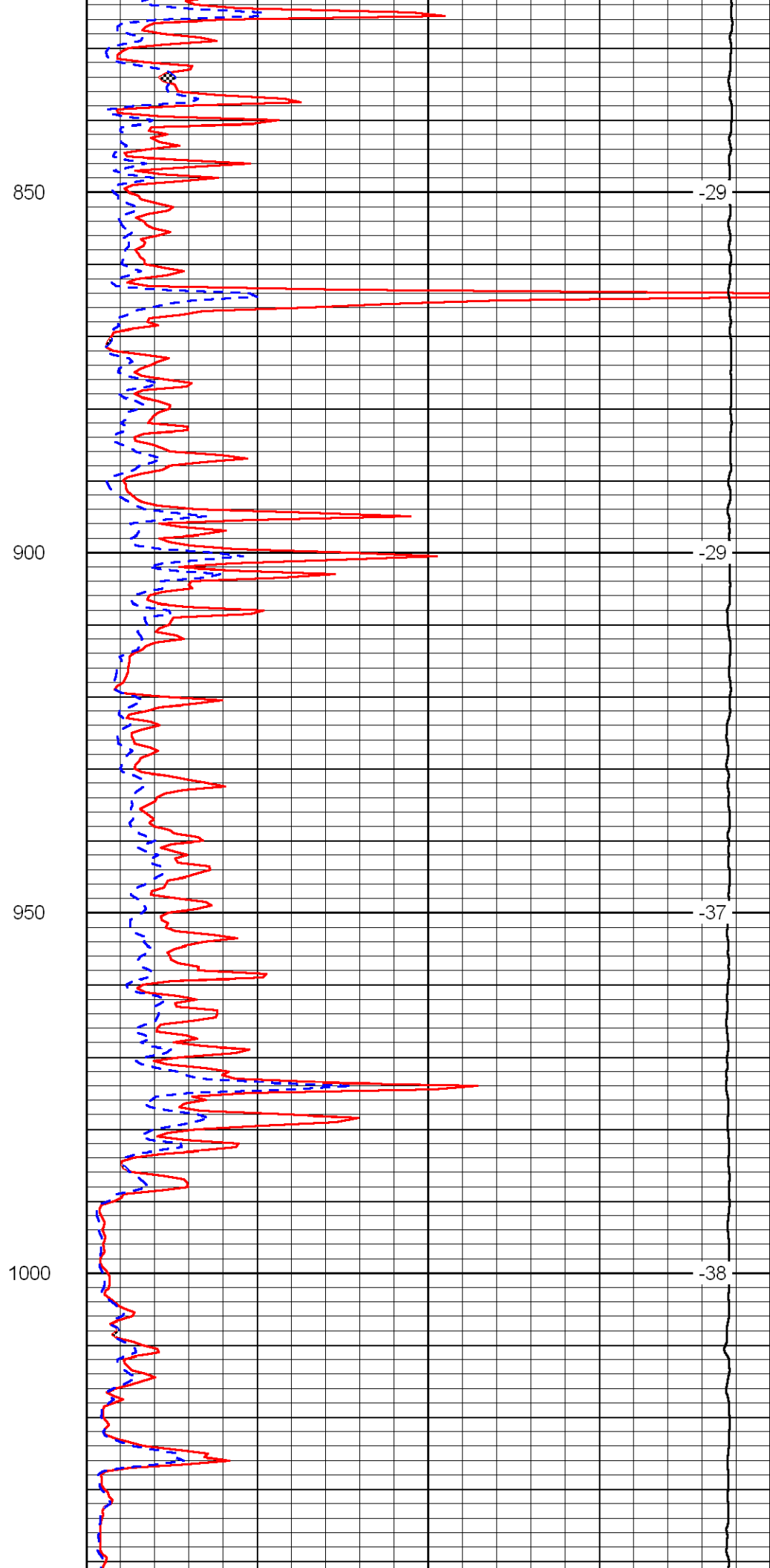
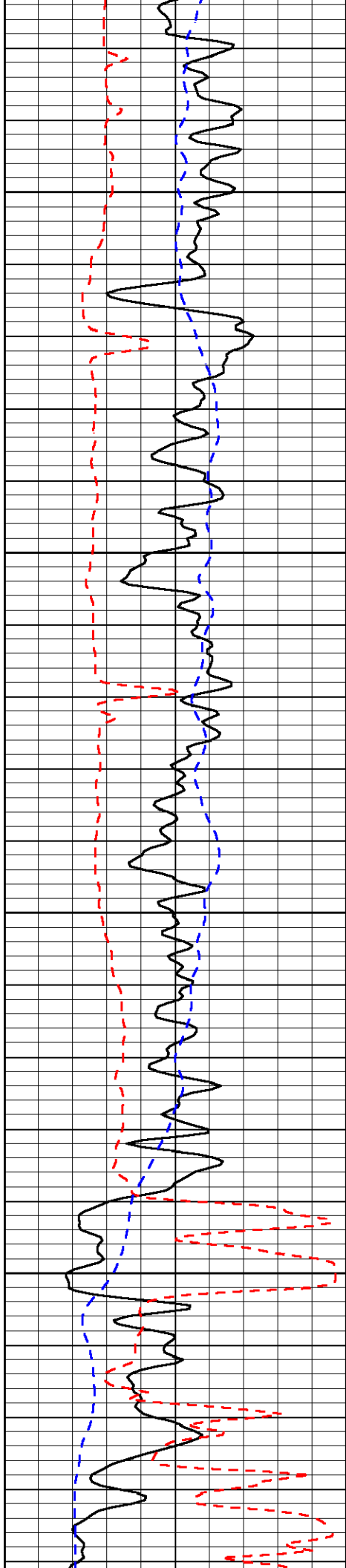
0	Gamma Ray	150
6	MCAL (GAPI)	16
2.875	Mud Cake (GAPI)	7.875
-200	SP	0

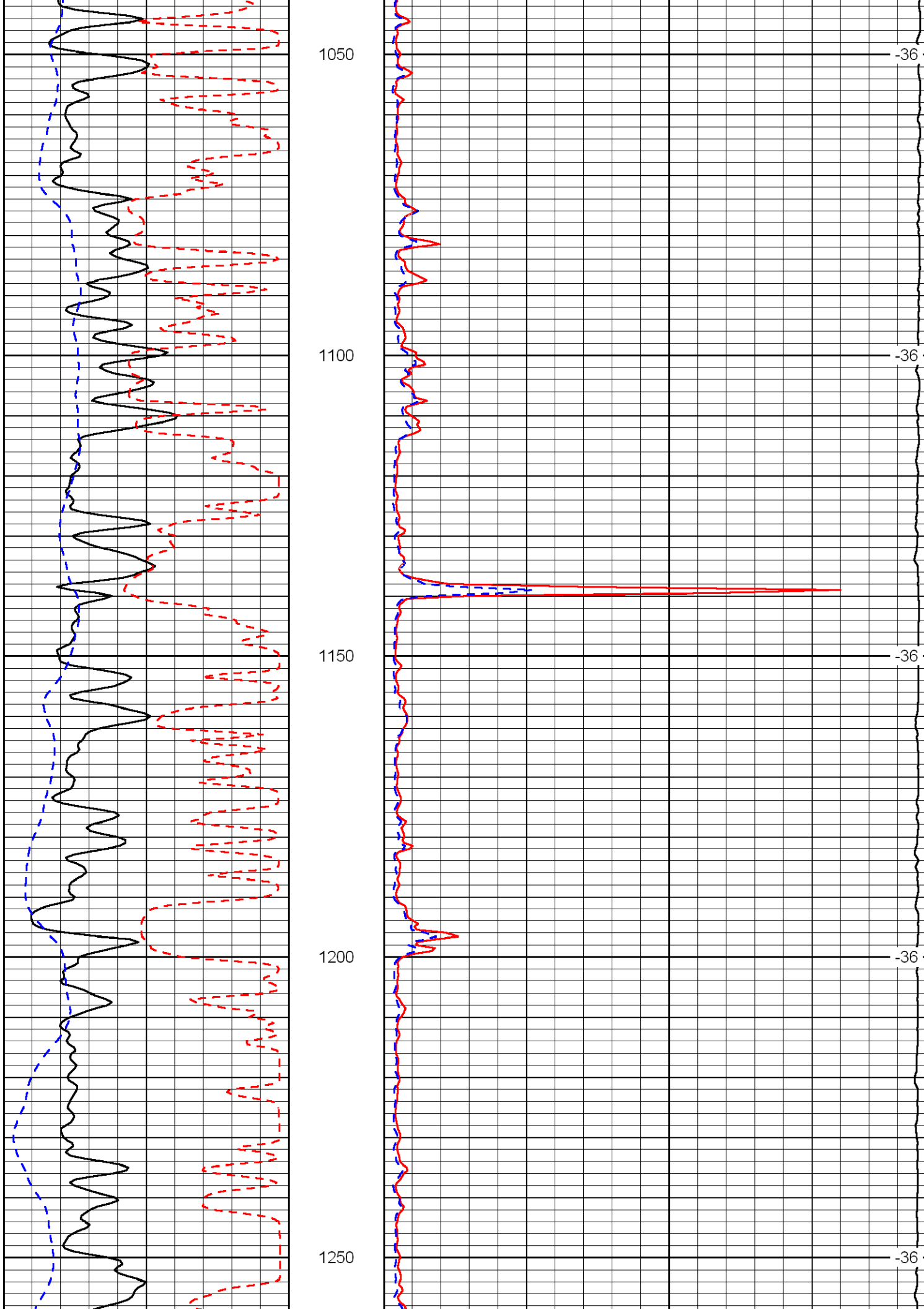
0	Micro Inverse 1 X 1	40
0	Micro Normal 2"	40
10000	Line Weight	0
		LSPD

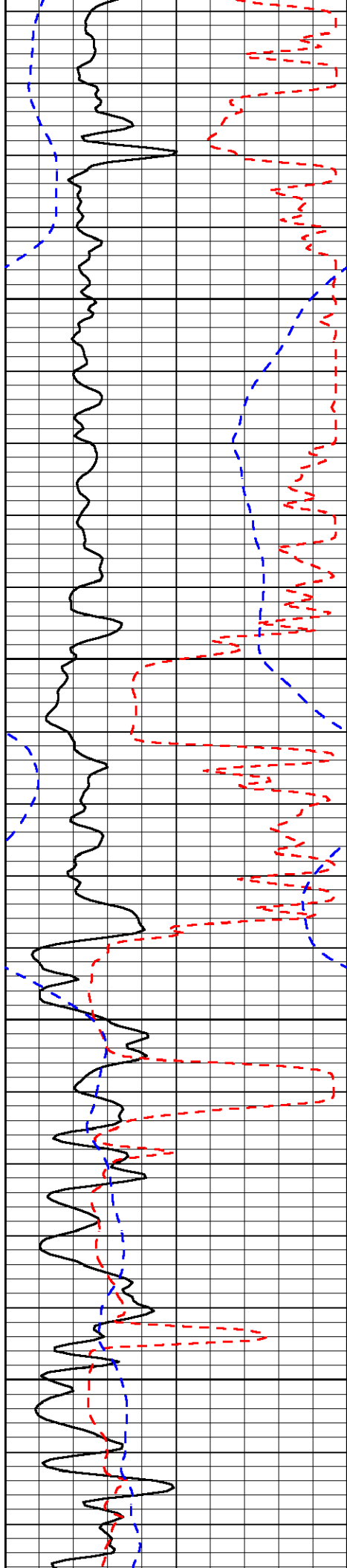










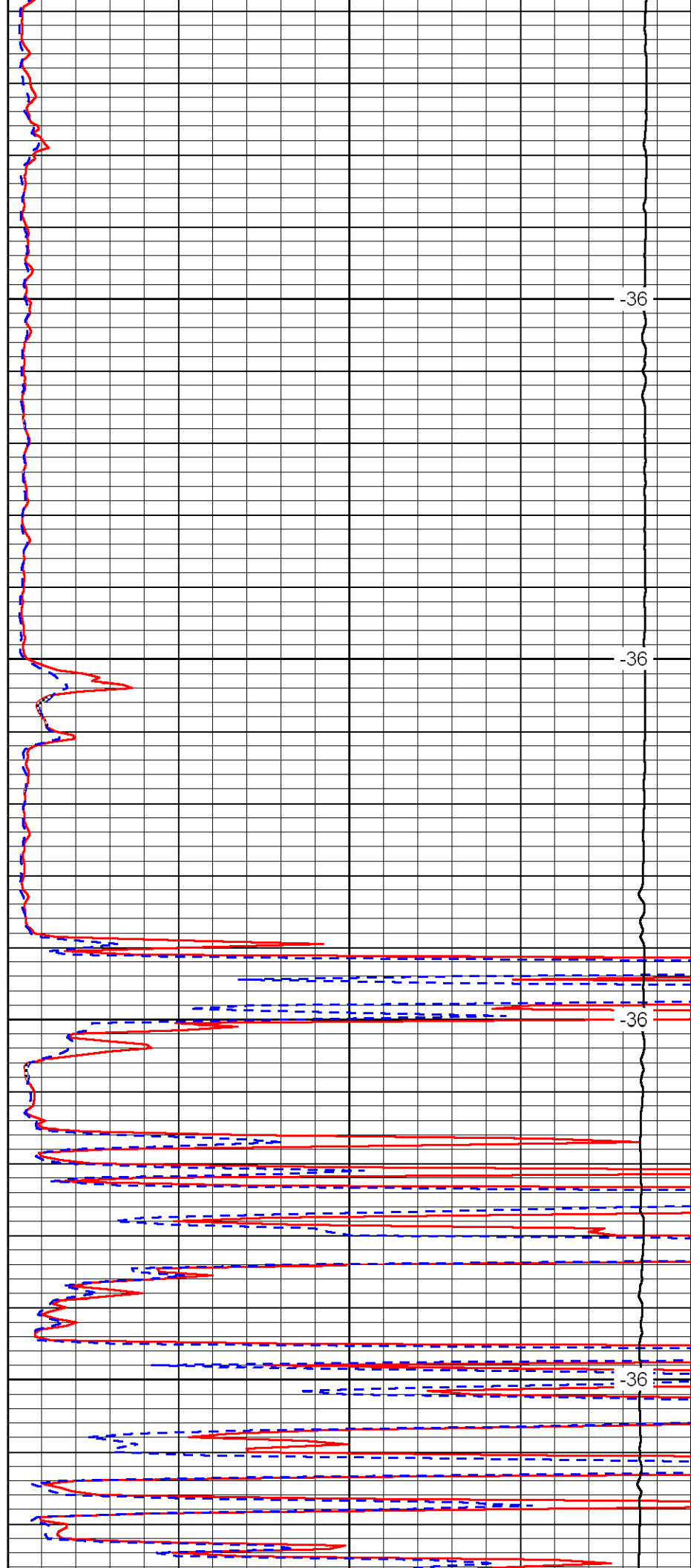


1300

1350

1400

1450

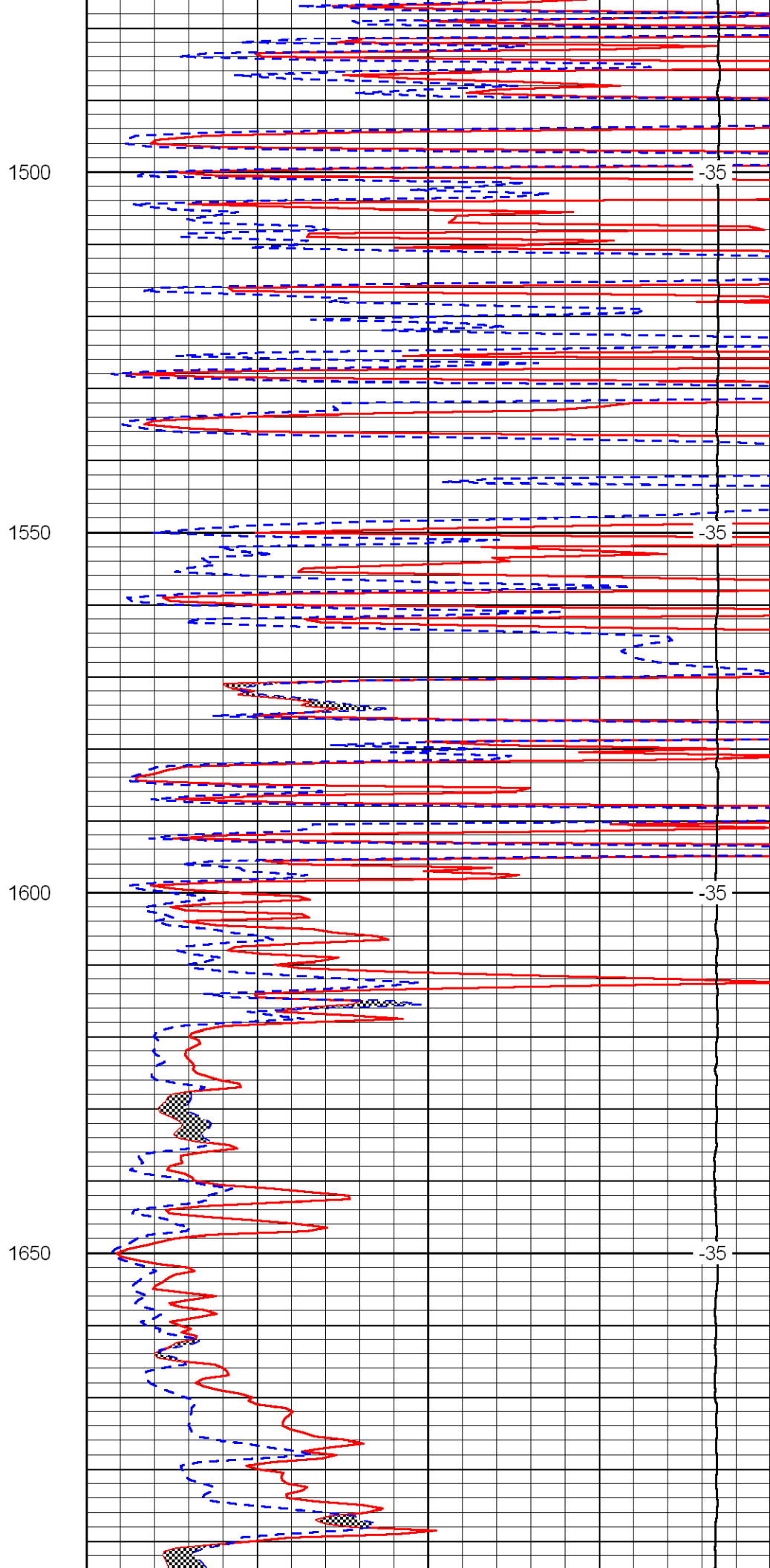
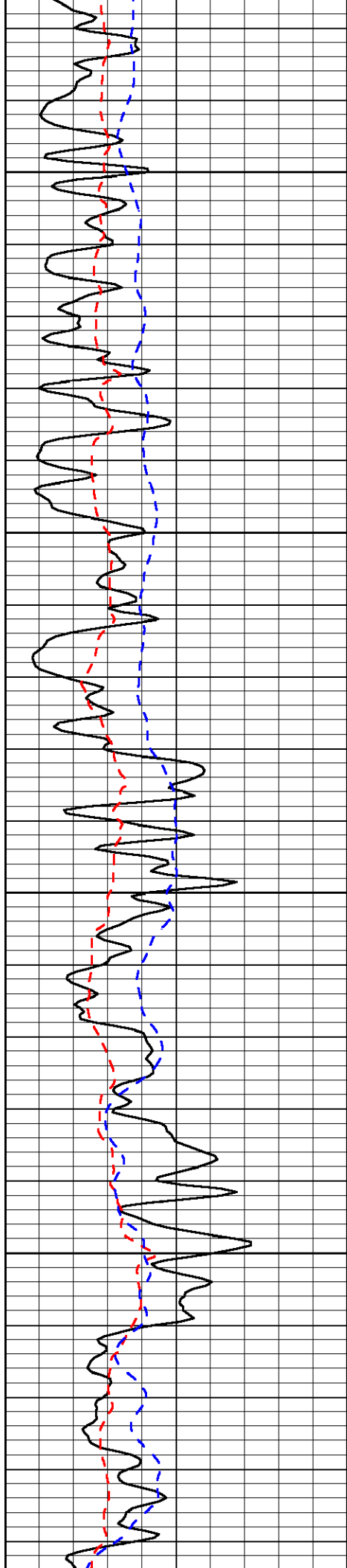


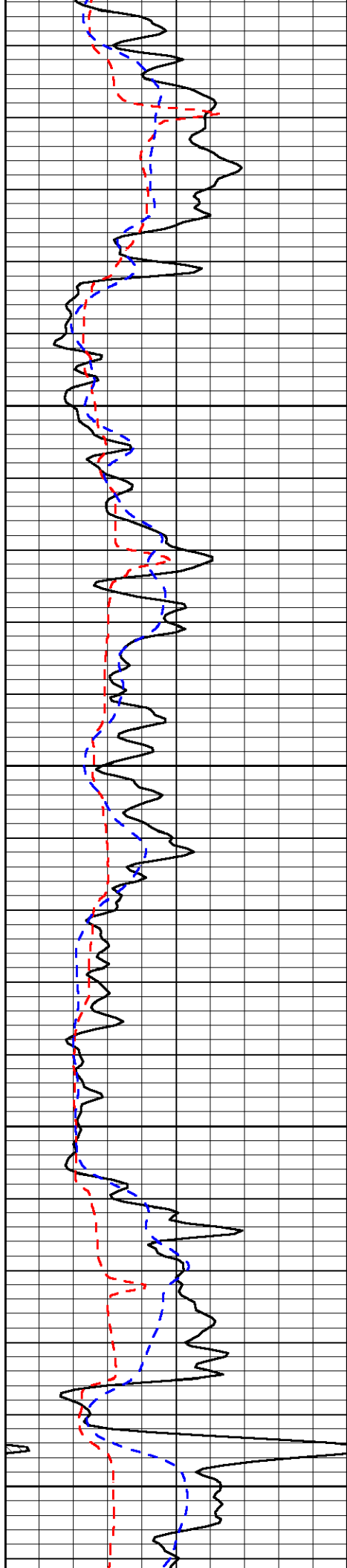
-36

-36

-36

-36





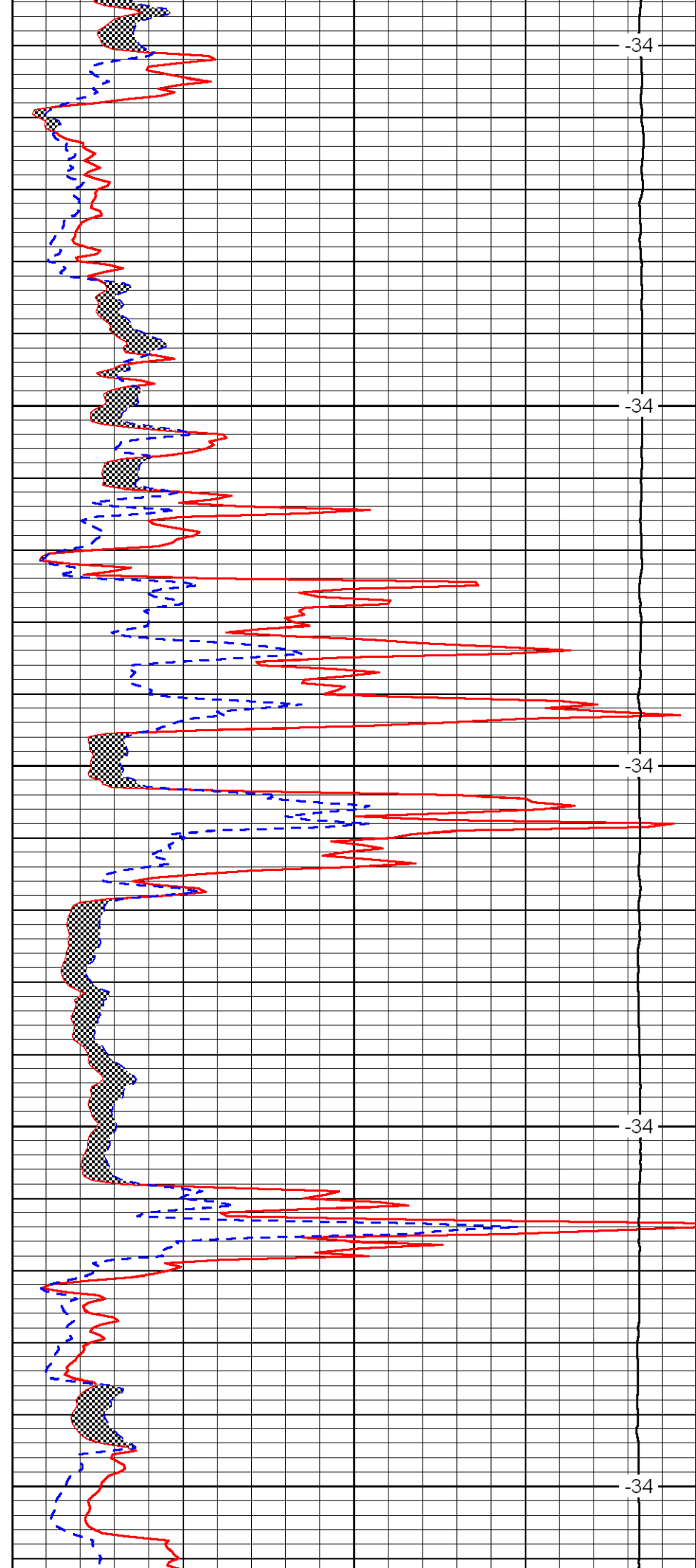
1700

1750

1800

1850

1900



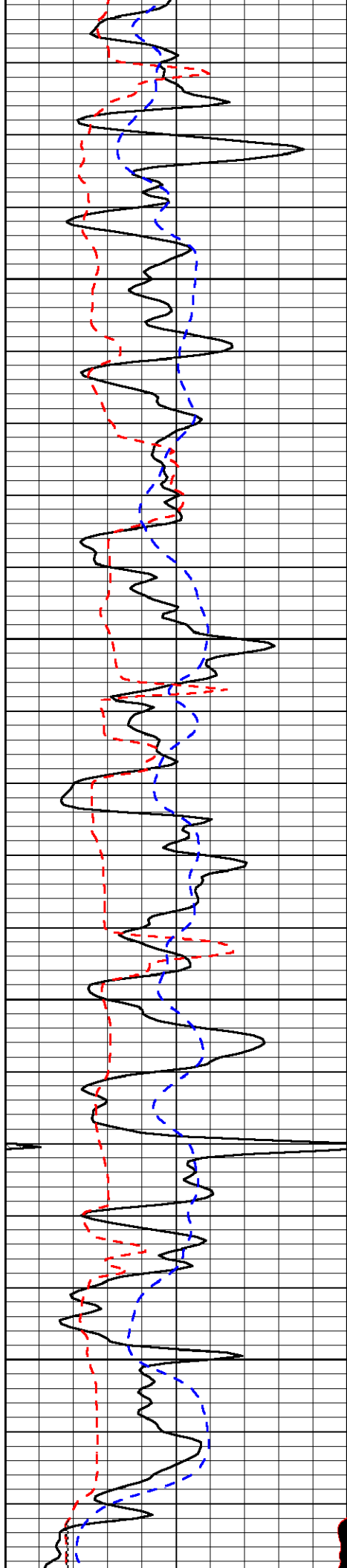
-34

-34

-34

-34

-34

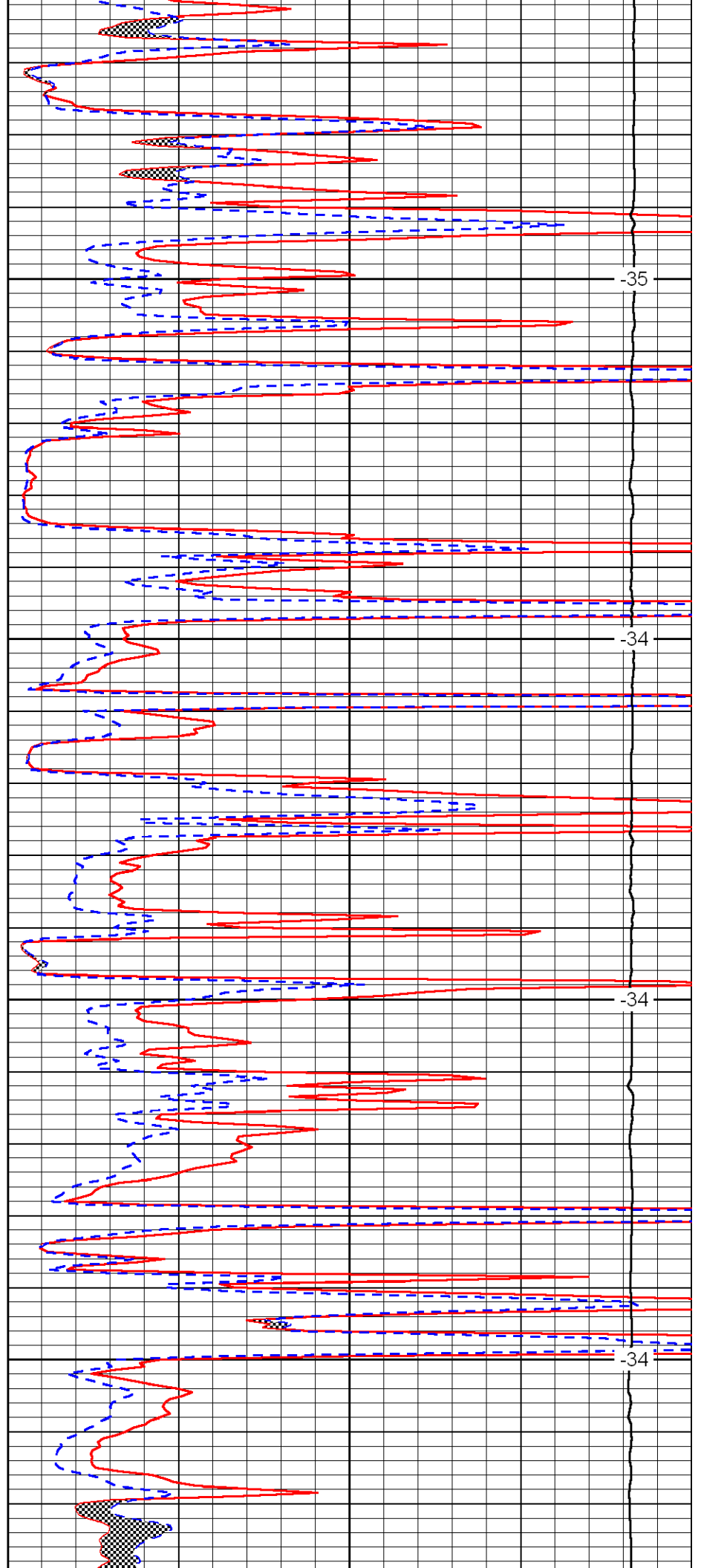


1950

2000

2050

2100

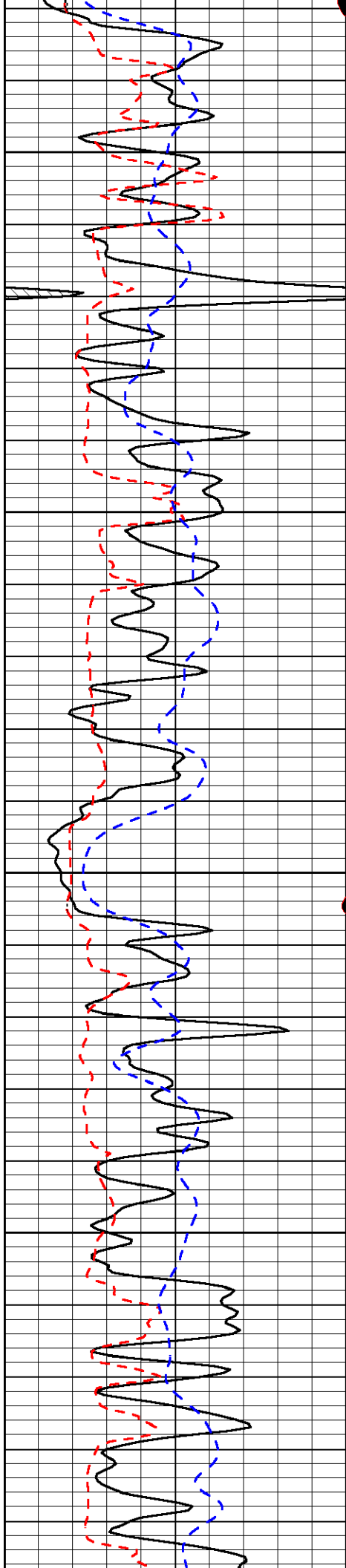


-35

-34

-34

-34

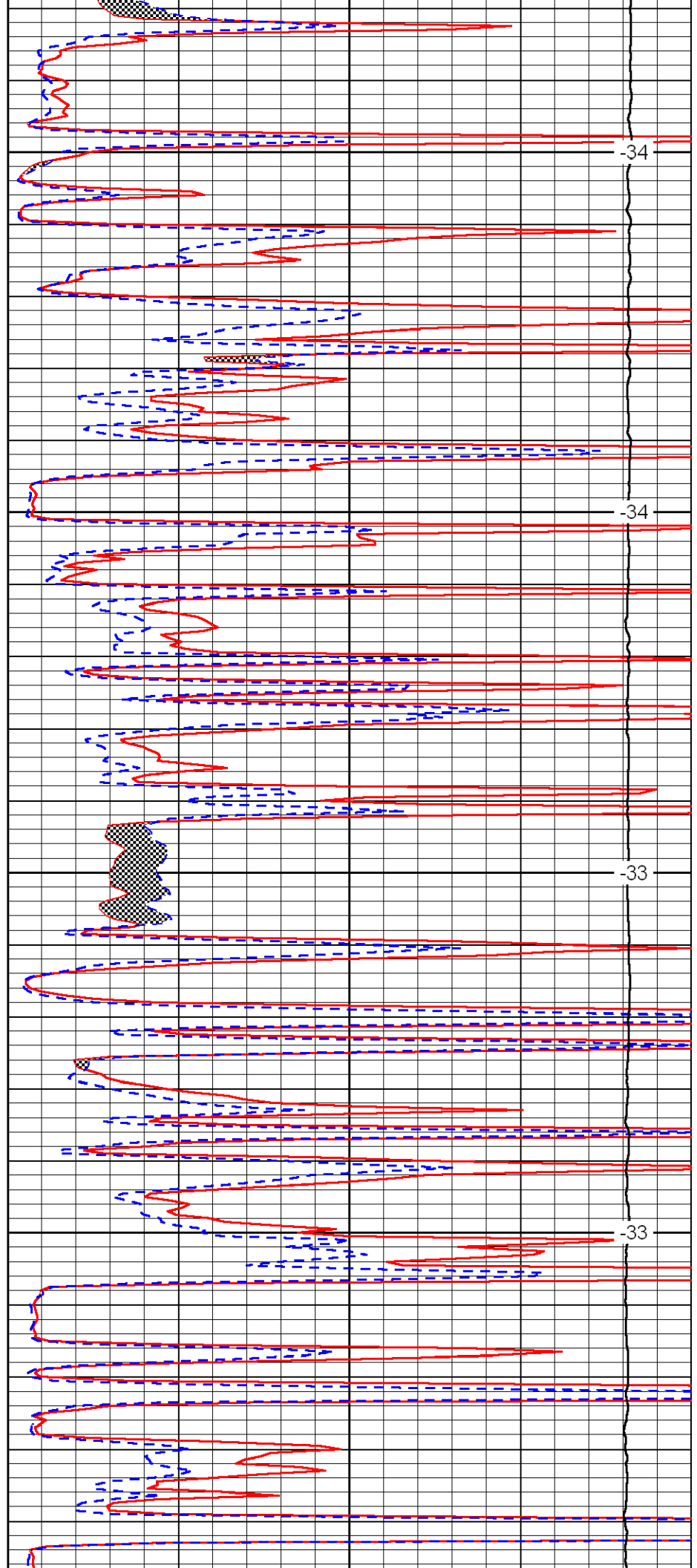


2150

2200

2250

2300

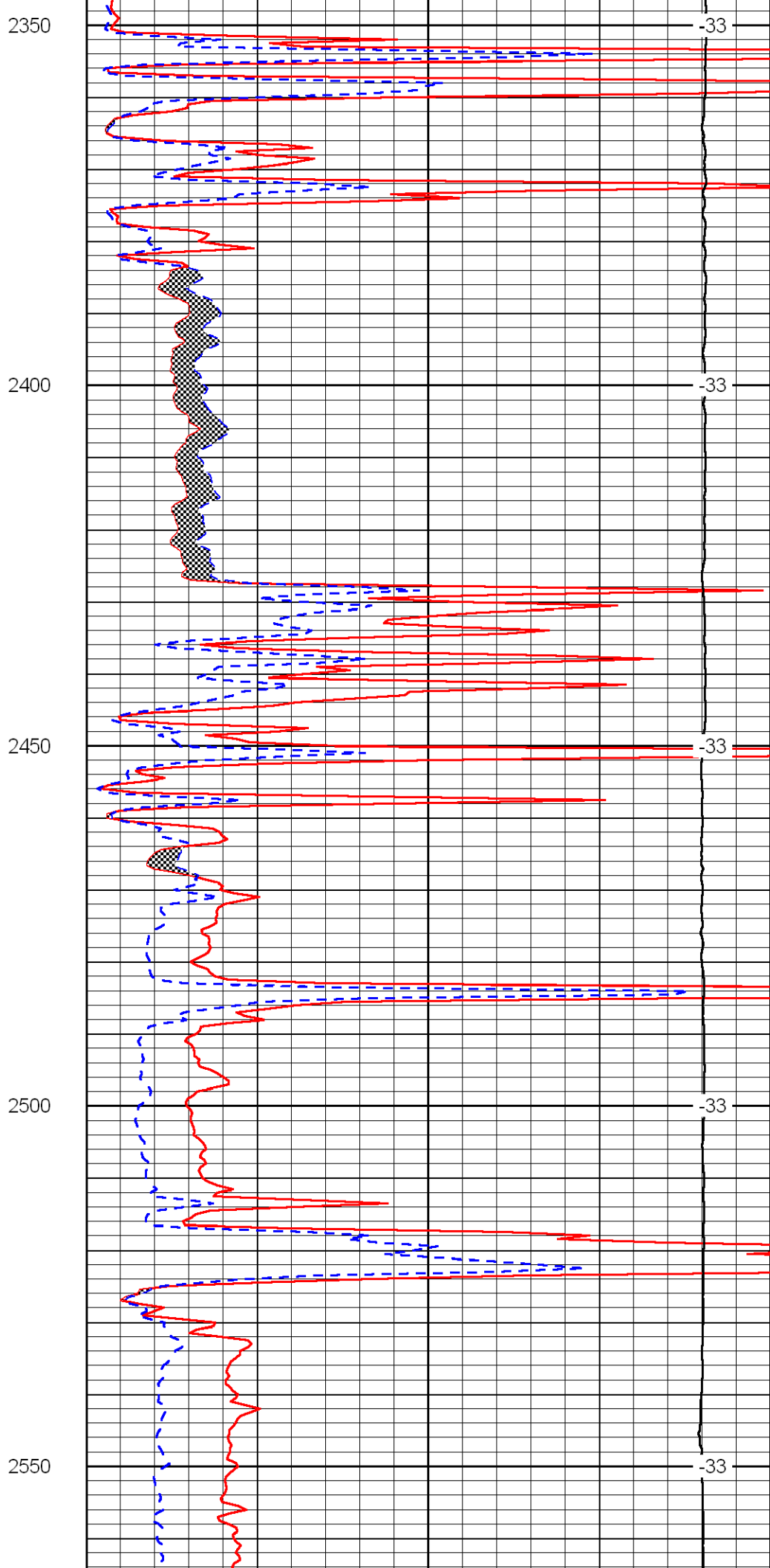
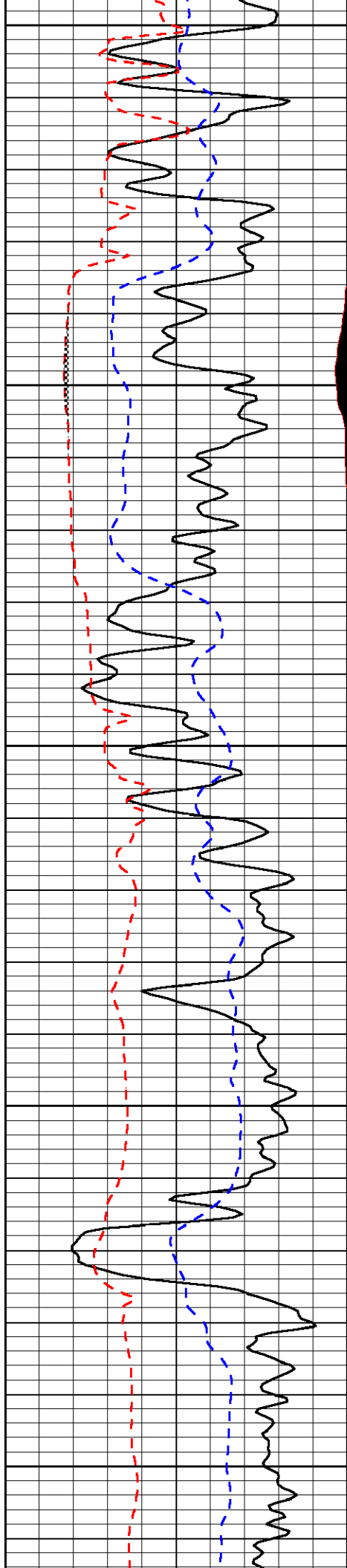


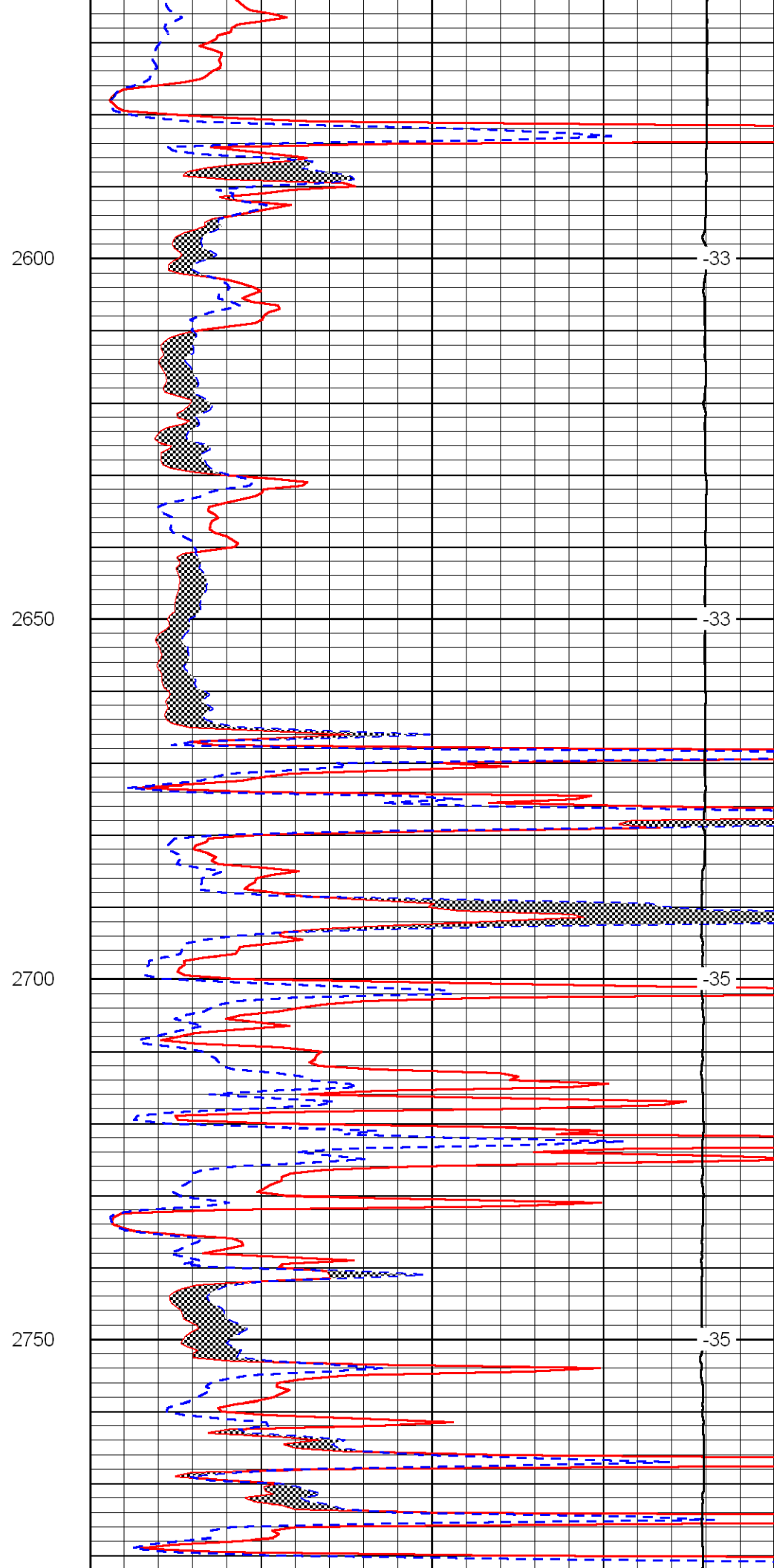
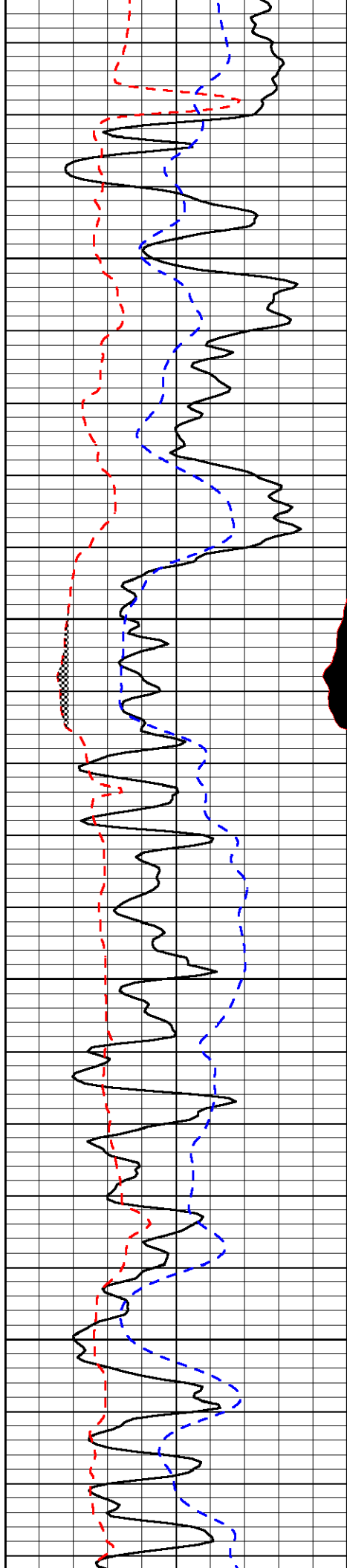
-34

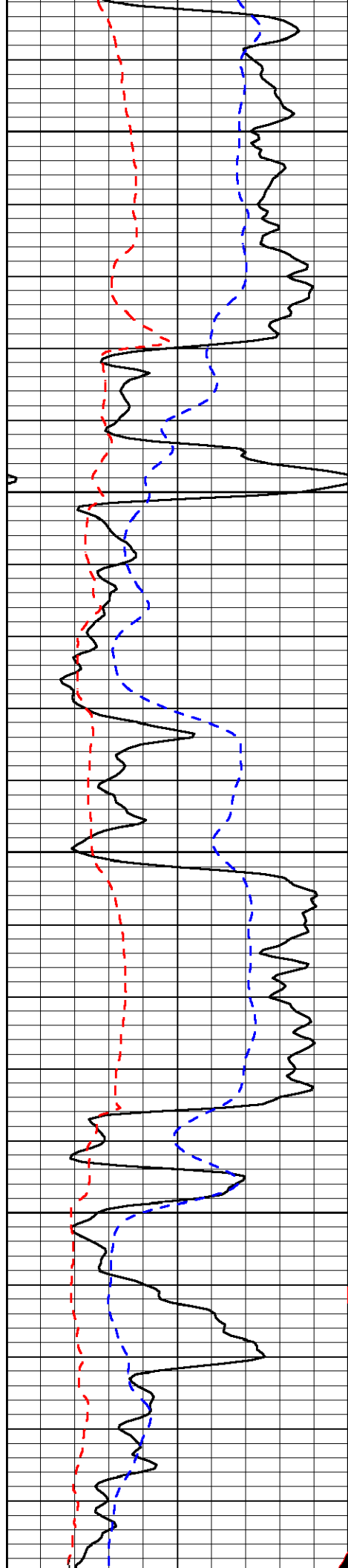
-34

-33

-33







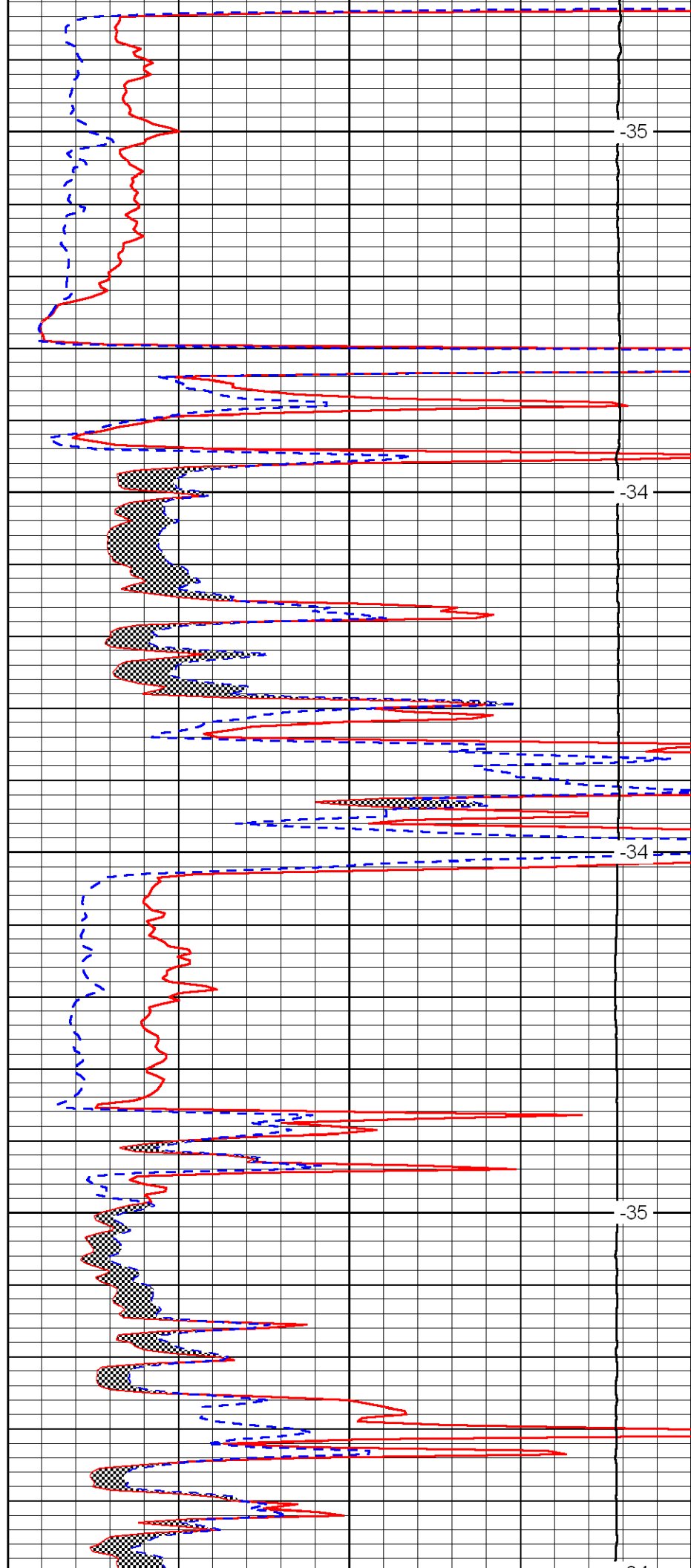
2800

2850

2900

2950

3000



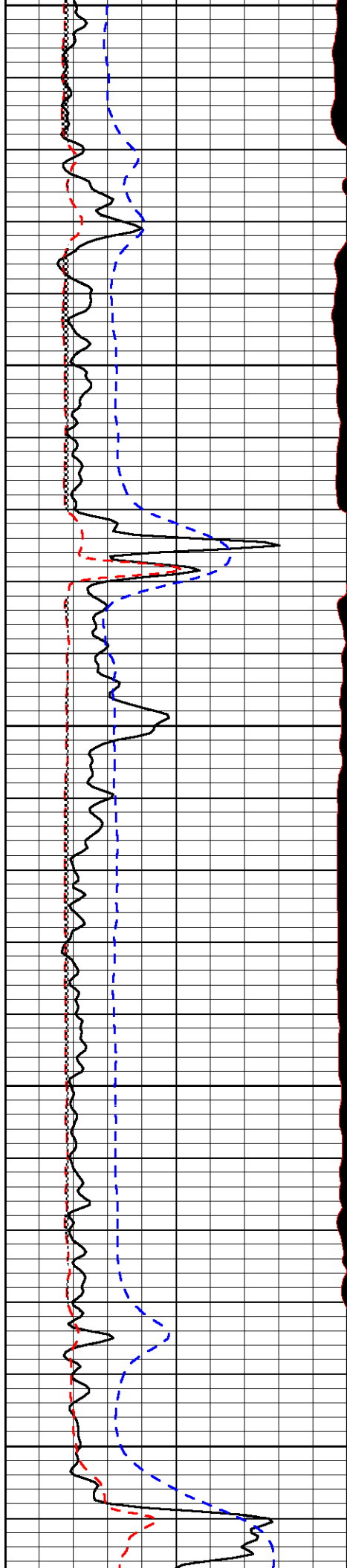
-35

-34

-34

-35

-34



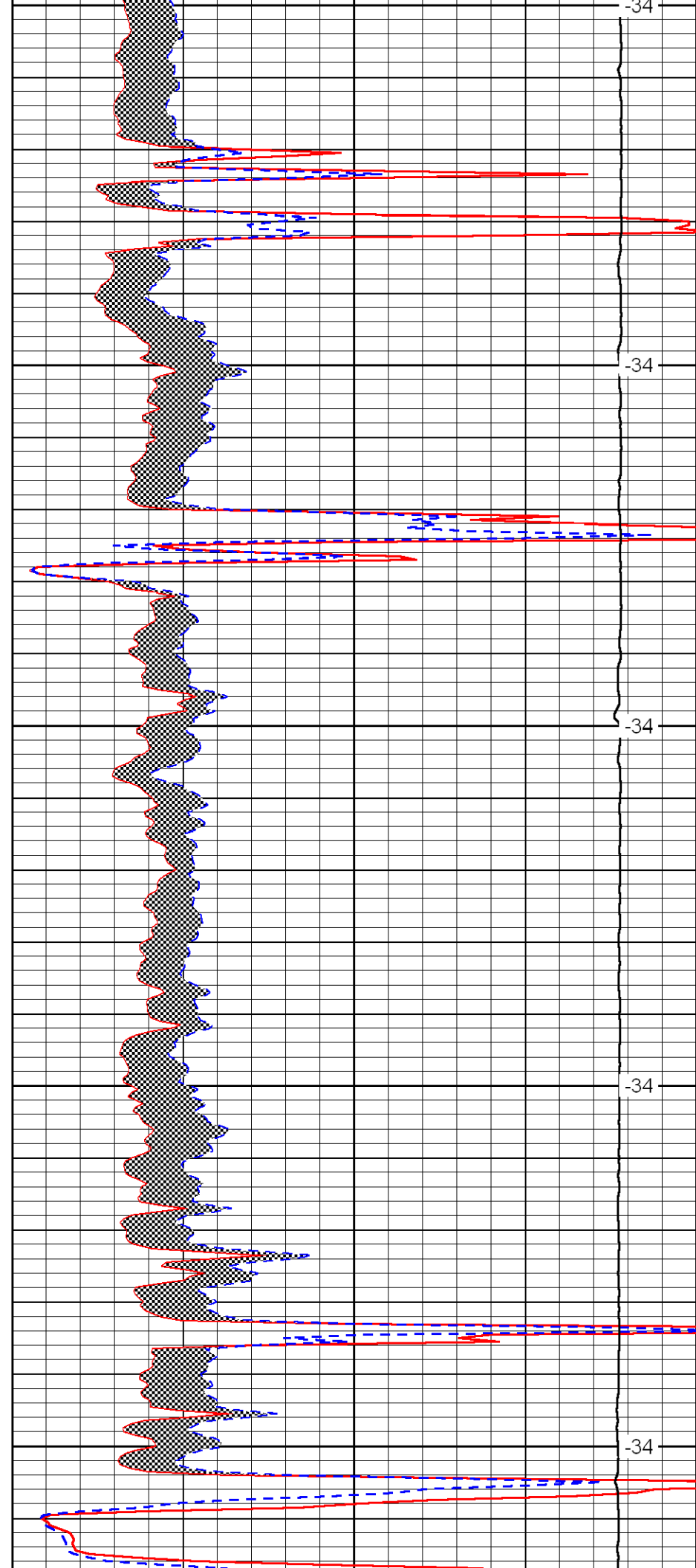
3000

3050

3100

3150

3200



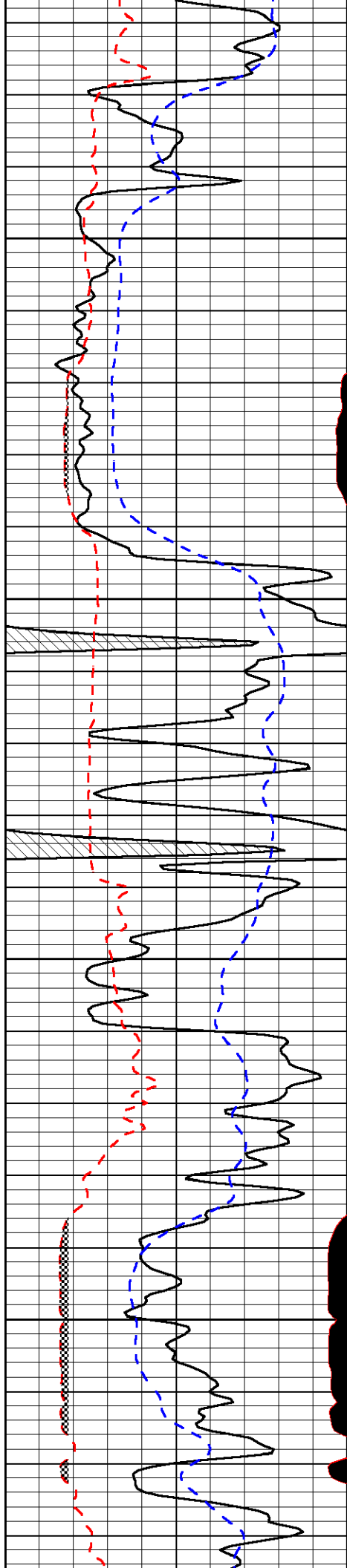
-34

-34

-34

-34

-34

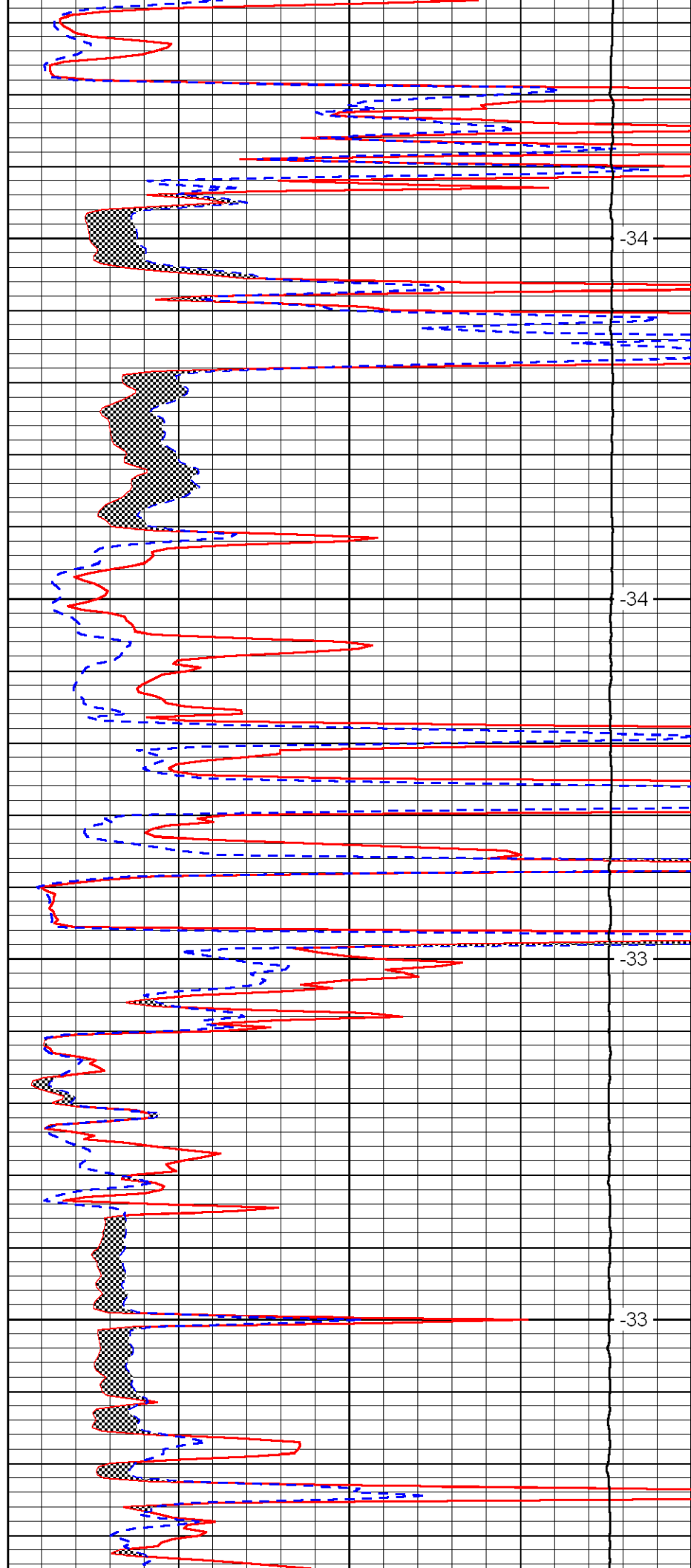


3250

3300

3350

3400

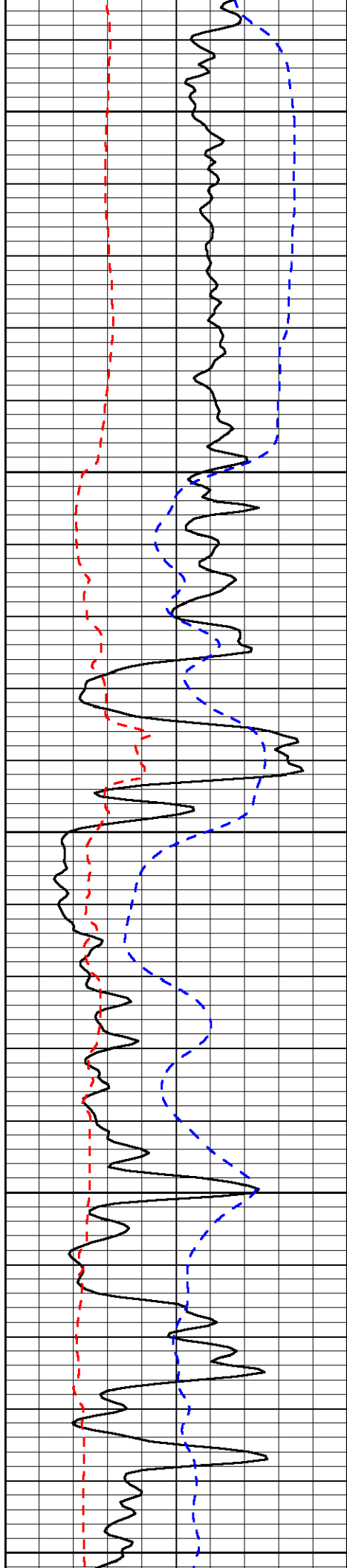


-34

-34

-33

-33



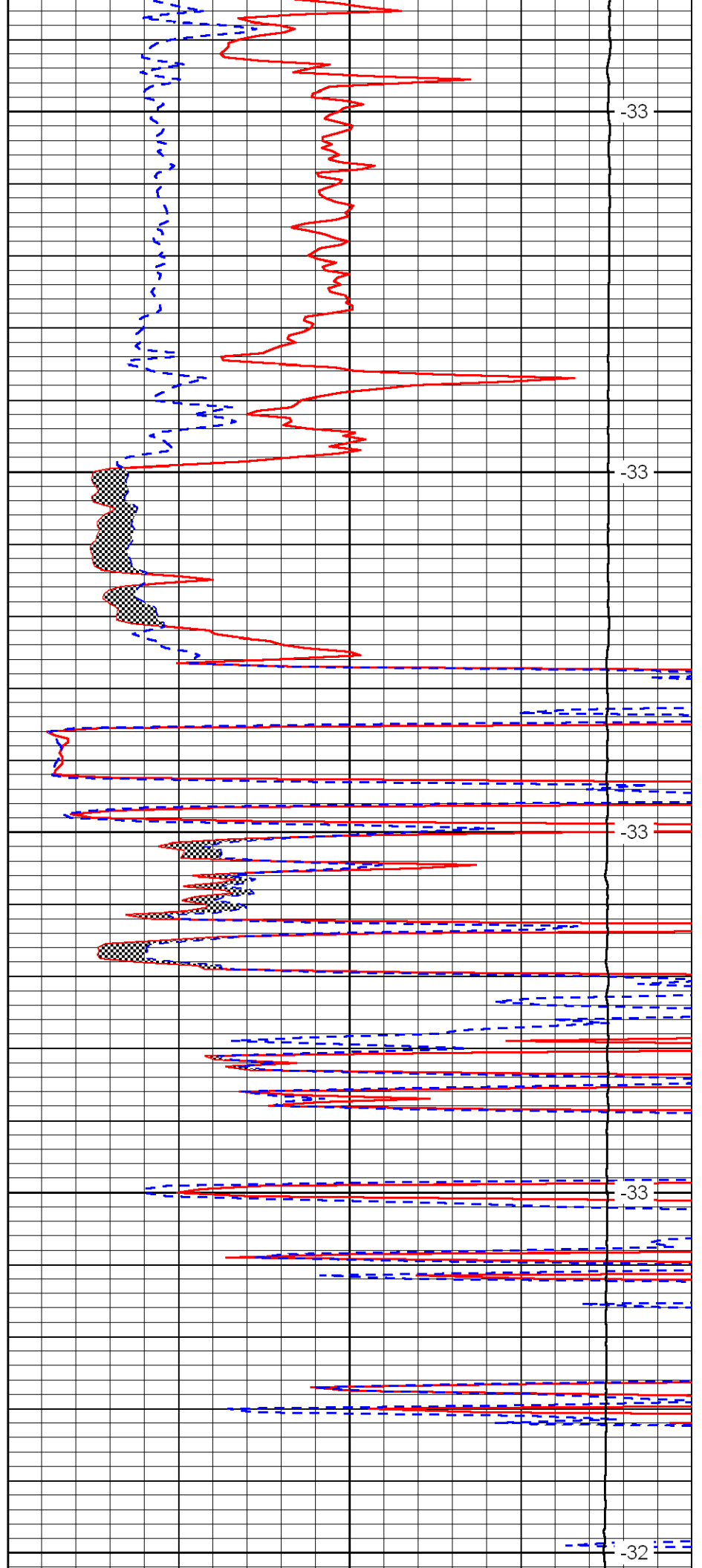
3450

3500

3550

3600

3650



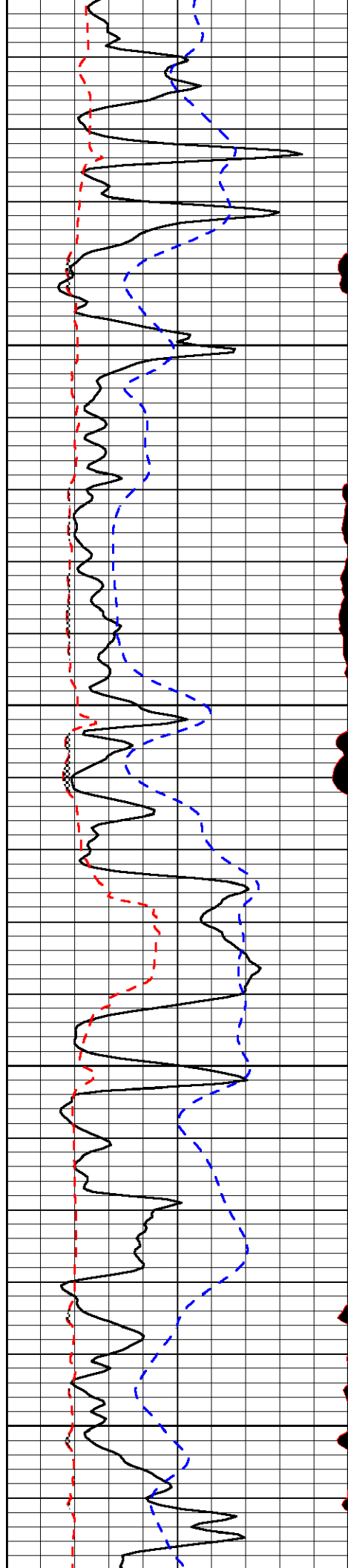
-33

-33

-33

-33

-32

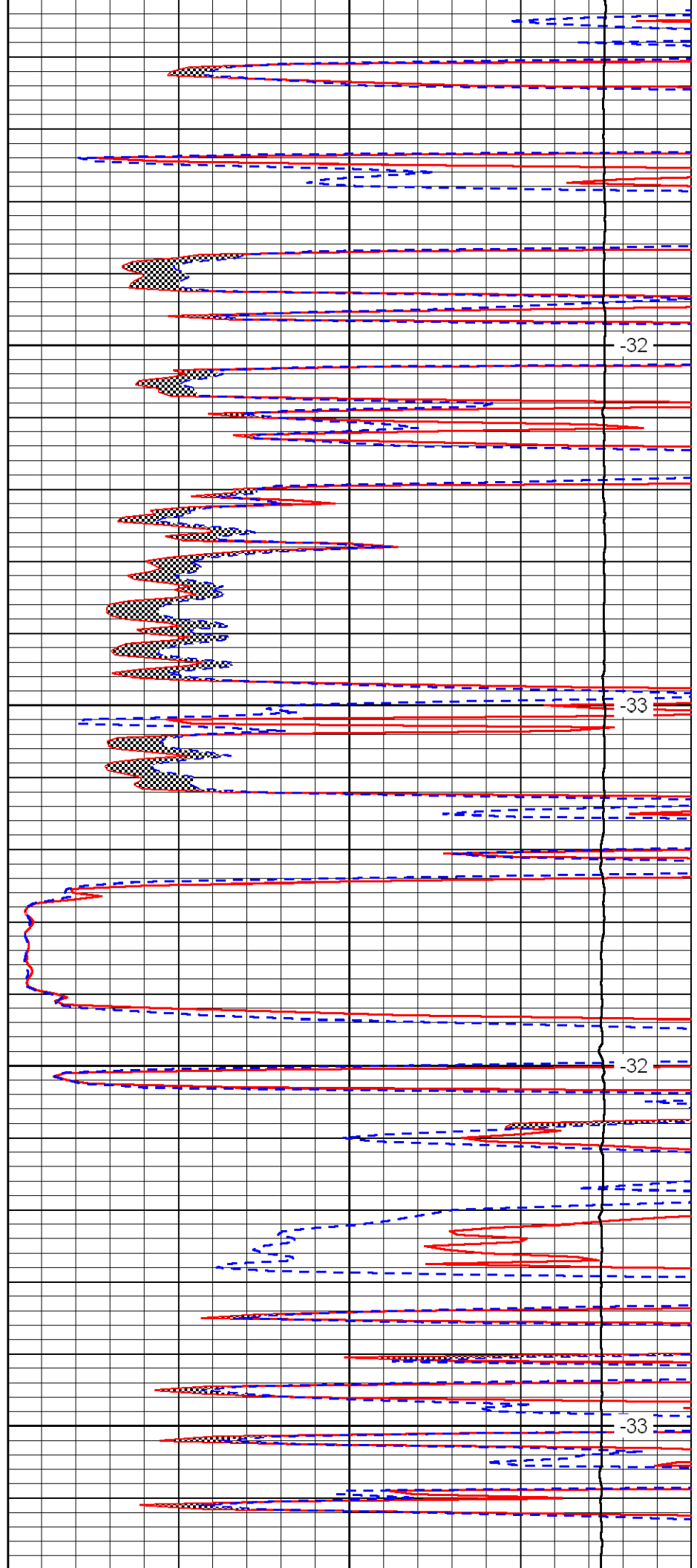


3700

3750

3800

3850

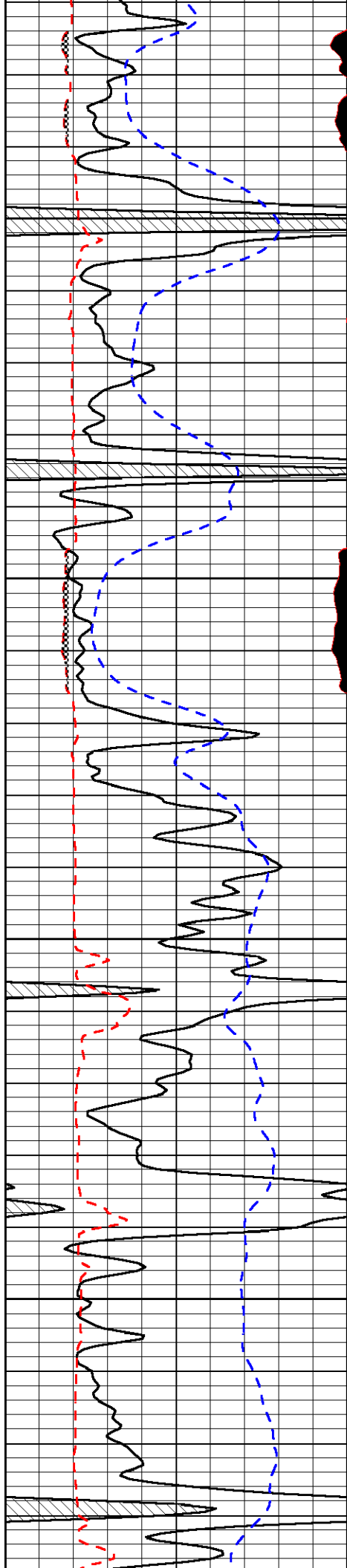


-32

-33

-32

-33

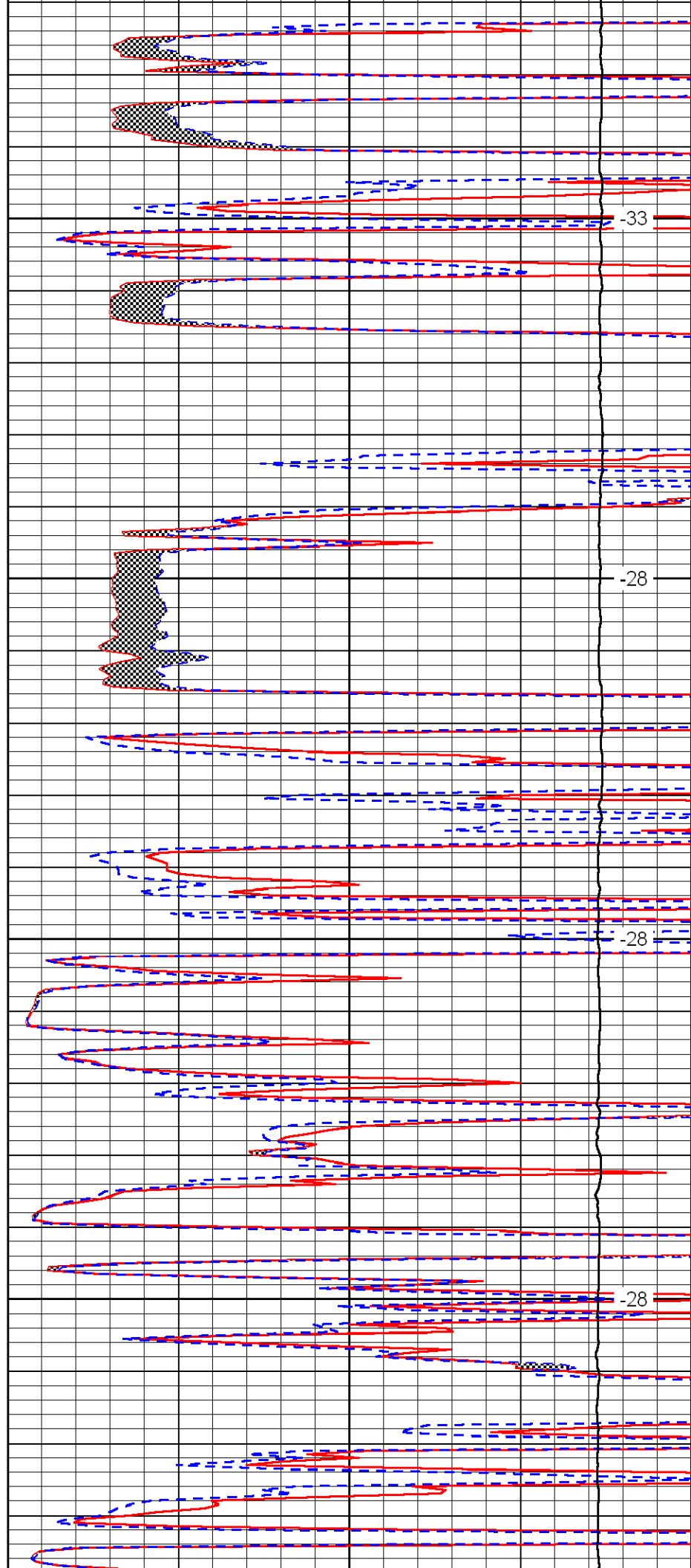


3900

3950

4000

4050

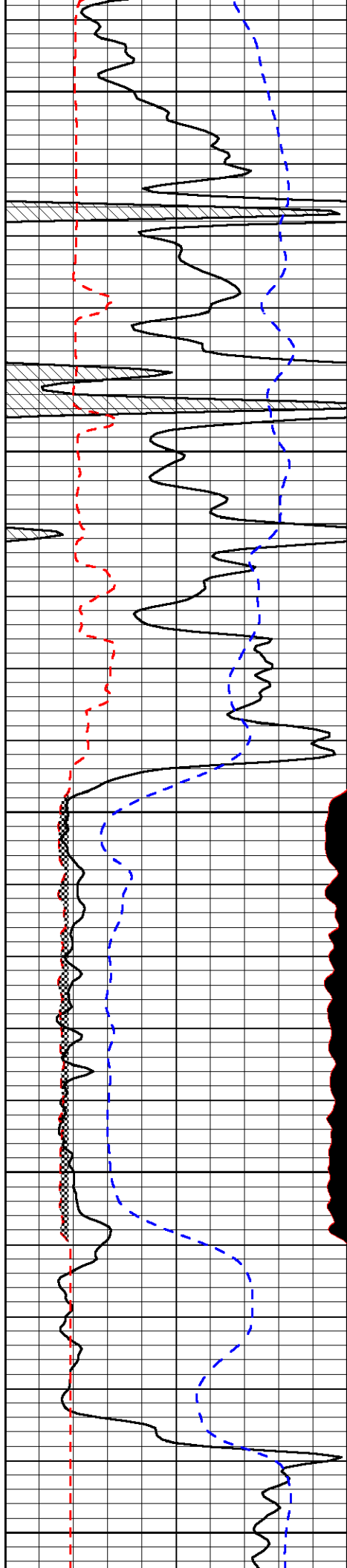


-33

-28

-28

-28



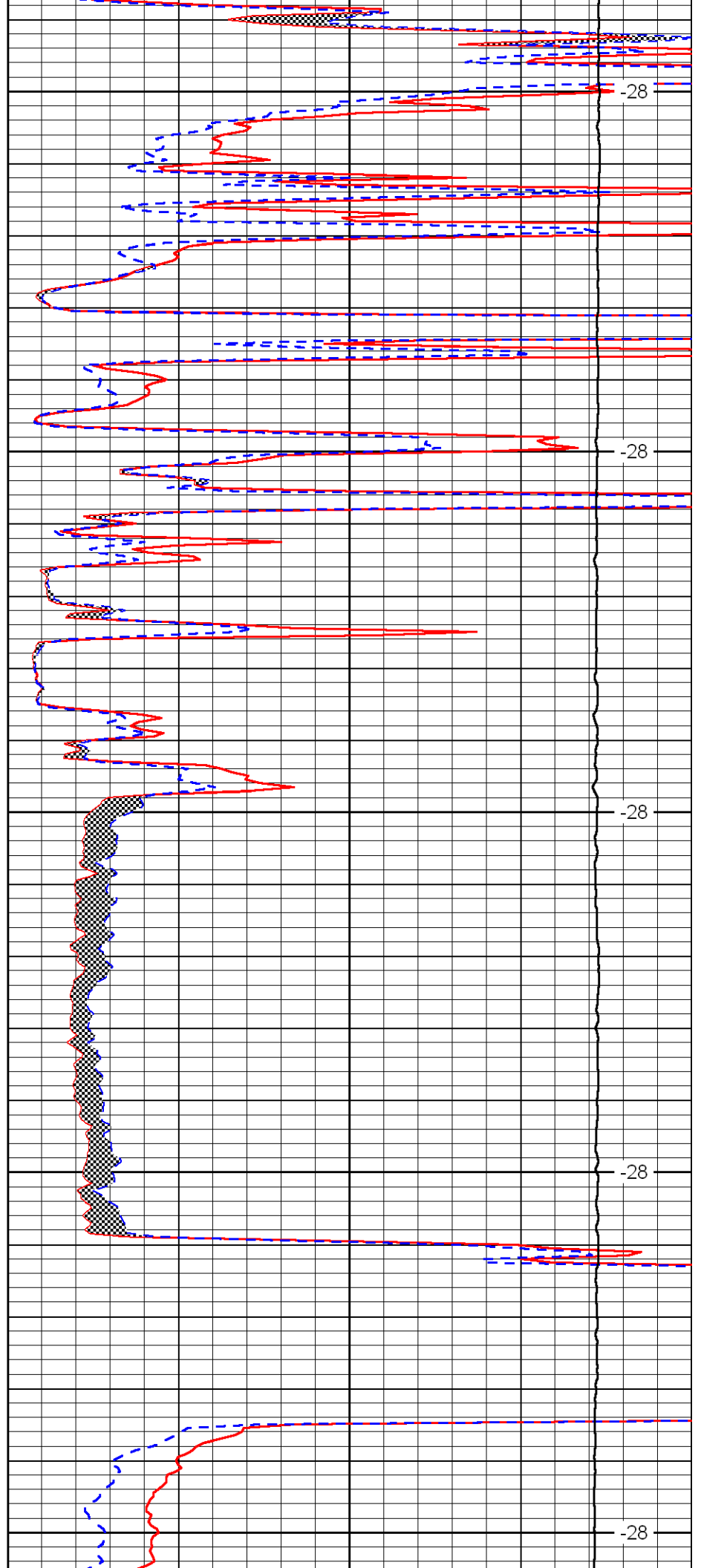
4100

4150

4200

4250

4300



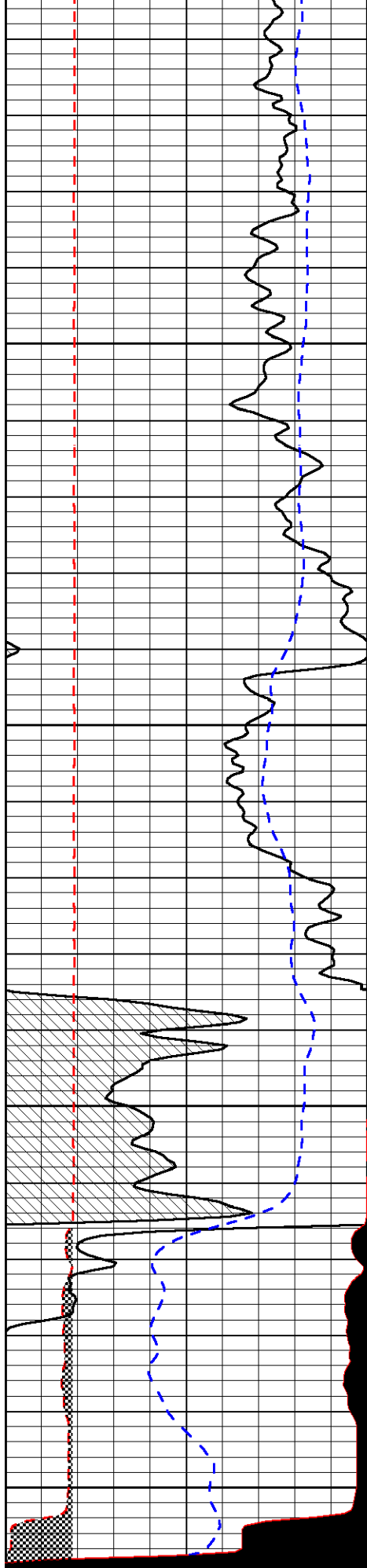
-28

-28

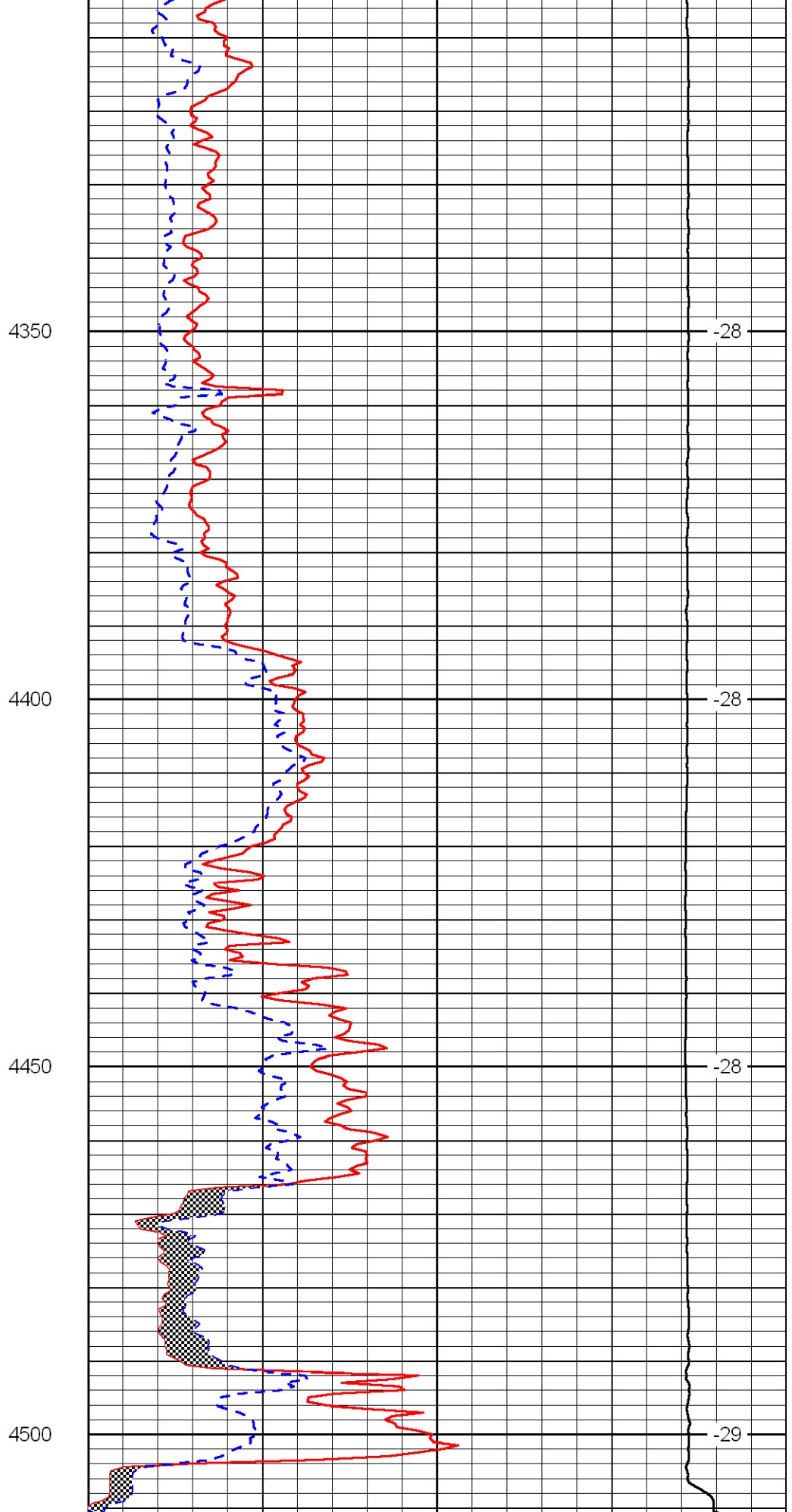
-28

-28

-28



0	Gamma Ray	150
6	MCAL (GAPI)	16
2.975	Micro Inverse 1 X 1	7.975



0	Micro Inverse 1 X 1	40
0	Micro Normal 2''	40
10000	Line Weight	0

2.875	Mud Cake (GAPI)	7.875
-200	SP	0

10000	Line weight	0
	LSPD	