



**COMPLETION  
& PRODUCTION  
SERVICES CO.**

**COMPENSATED  
DENSITY / NEUTRON  
LOG**

Company RITCHIE EXPLORATION, INC.  
Well LAMPE 3B #1  
Field RACCOON  
County FORD State KANSAS

Company RITCHIE EXPLORATION, INC.  
Well LAMPE 3B #1  
Field RACCOON  
County FORD  
State KANSAS

Location: 3140' FSL & 1320' FWL  
S2 - NW  
SEC 3 TWP 26S RGE 22W  
API #: 15-057-20912-00-00  
Other Services  
DIL  
Elevation  
Permanent Datum GROUND LEVEL Elevation 2401  
Log Measured From KELLY BUSHING 10' A.G.L.  
Drilling Measured From KELLY BUSHING  
G.L. 2401

Date	10/8/13		
Run Number	ONE		
Depth Driller	5001		
Depth Logger	5003		
Bottom Logged Interval	4979		
Top Log Interval	3400		
Casing Driller	8 5/8 @ 360		
Casing Logger	357		
Bit Size	7.875		
Type Fluid in Hole	CHEMICAL MUD	CHLORIDES 5.300	
Density / Viscosity	9.2 / 63		
pH / Fluid Loss	10.5 / 8.8		
Source of Sample	FLOWLINE		
Rim @ Meas. Temp	0.60 @ 84F		
Rmf @ Meas. Temp	0.45 @ 84F		
Rmc @ Meas. Temp	0.72 @ 84F		
Source of Rmf / Rmc	MEASURED		
Rim @ BHT	0.40 @ 125F		
Time Circulation Stopped	2 HOURS		
Time Logger on Bottom			
Maximum Recorded Temperature	125F		
Equipment Number	860		
Location	HAYS, KS.		
Recorded By	IAN MABB		
Witnessed By	ADAM ELDANI		

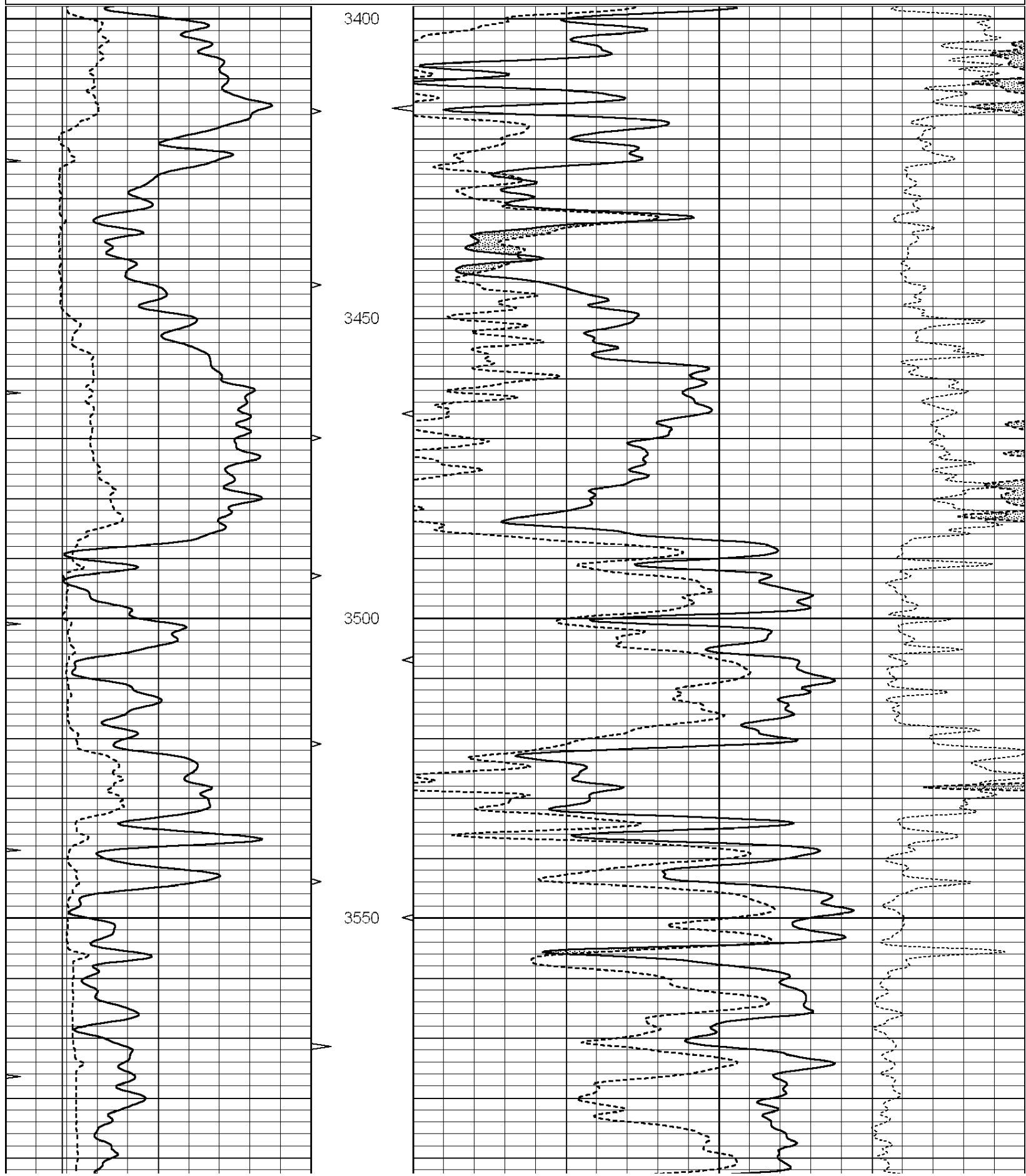
<<< Fold Here >>>

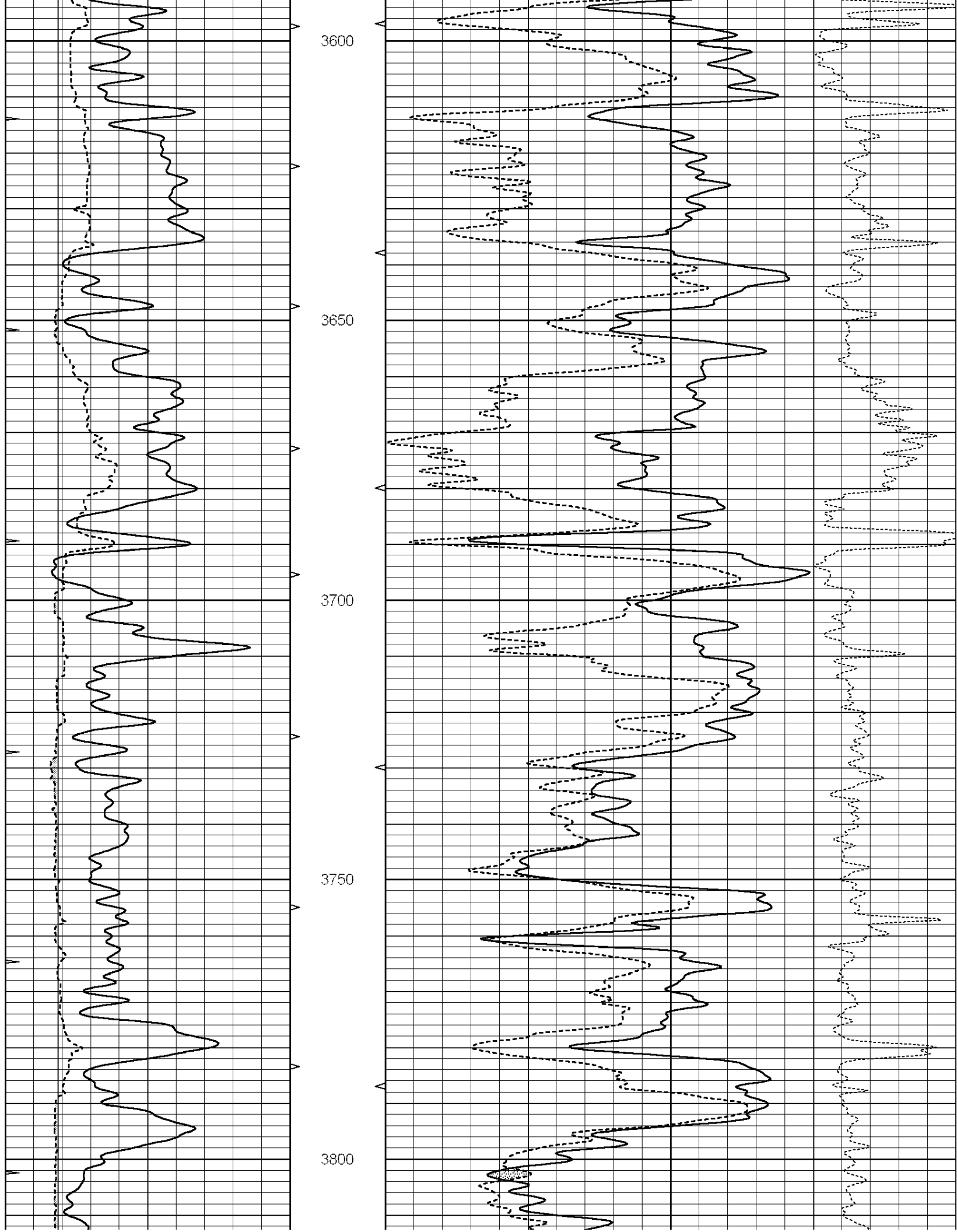
All interpretations are opinions based on inferences from electrical or other measurements and we cannot and do not guarantee the accuracy or correctness of any interpretation, and we shall not, except in the case of gross or willful negligence on our part, be liable or responsible for any loss, costs, damages, or expenses incurred or sustained by anyone resulting from any interpretation made by any of our officers, agents or employees. These interpretations are also subject to our general terms and conditions set out in our current Price Schedule.

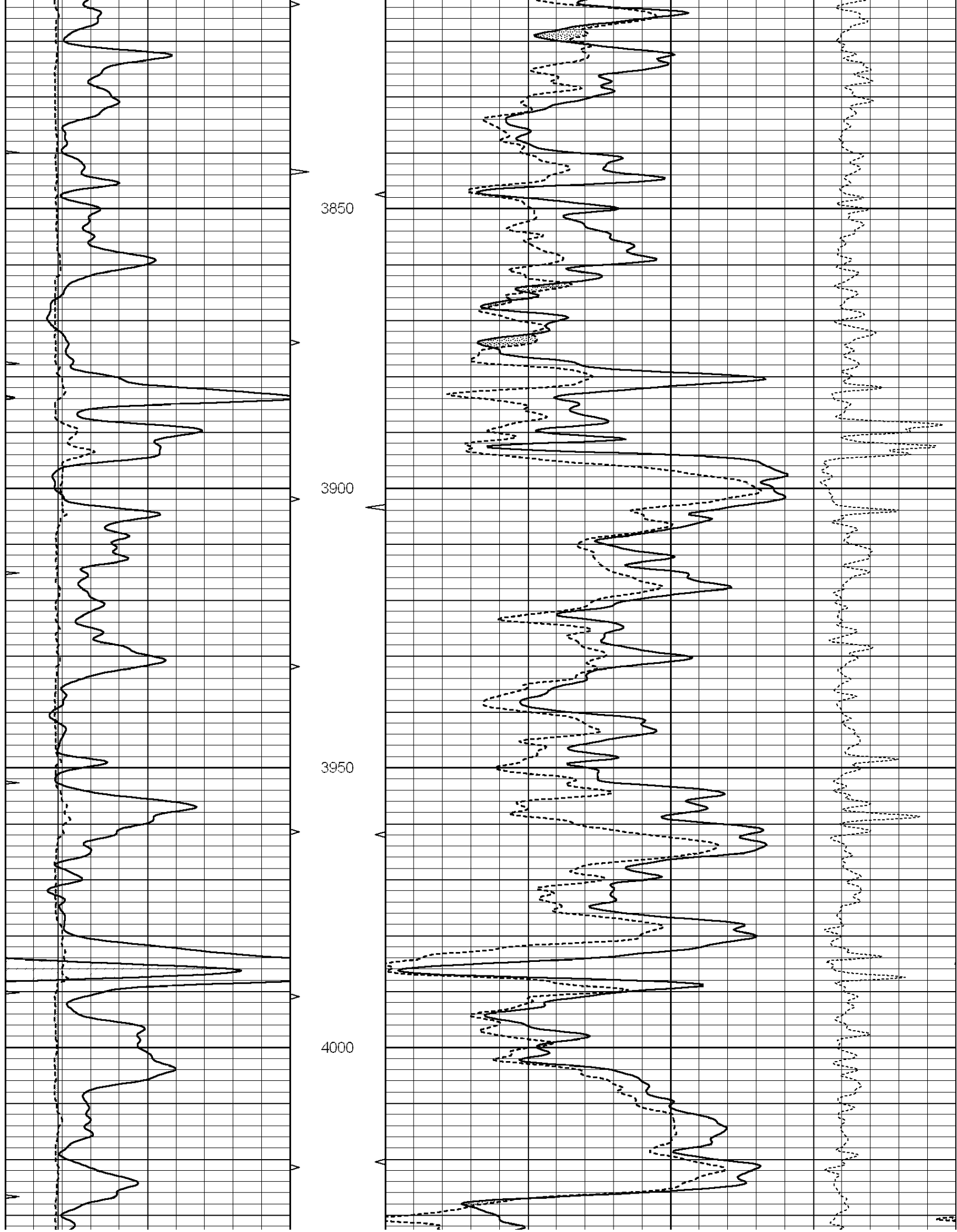
Comments

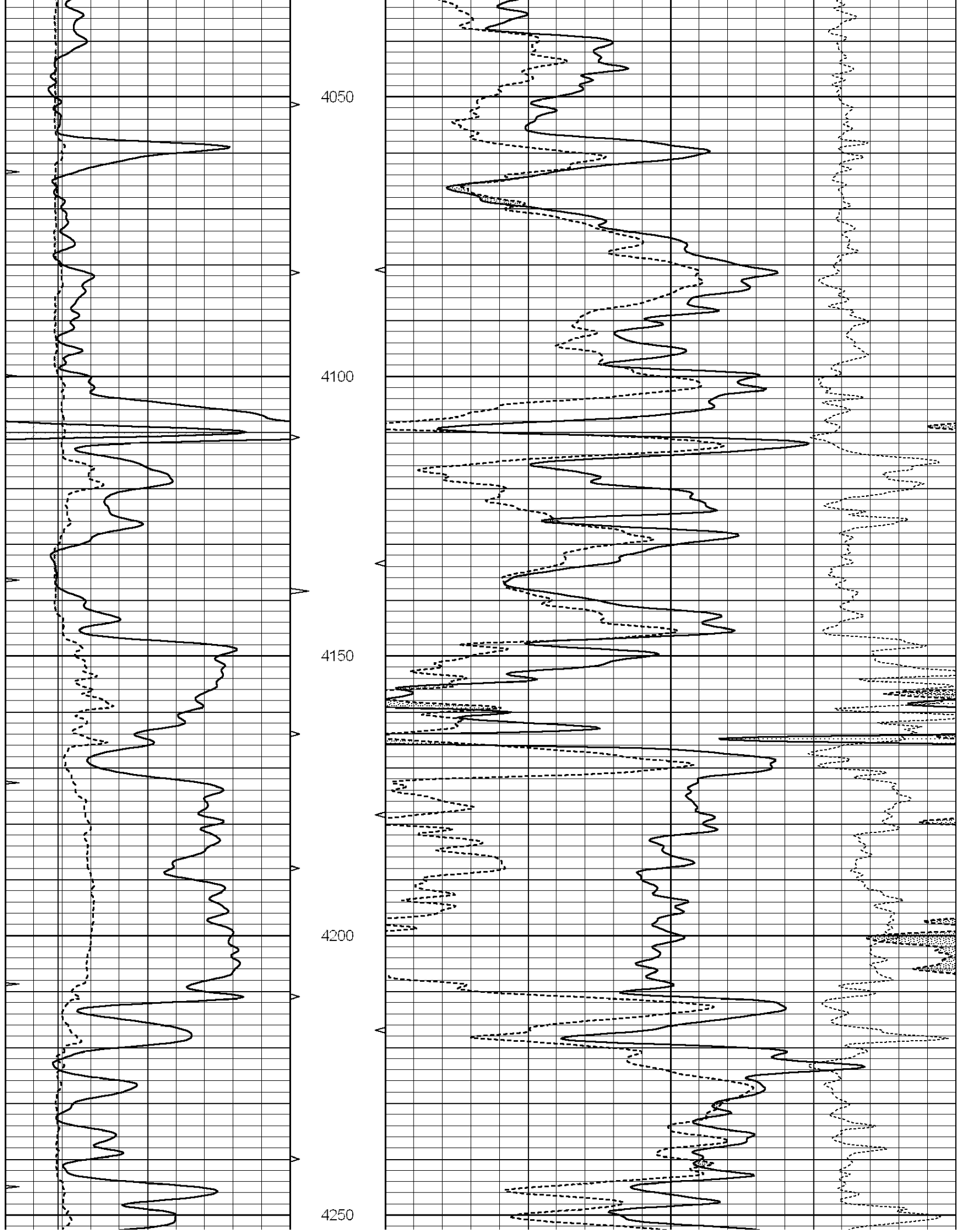
NABORS COMPLETION & PRODUCTION SERVICES  
785-628-6395  
THANK YOU FOR YOUR BUSINESS  
DIRECTIONS: SPEARVILLE, KS. - 1 MILE SOUTH - 1 MILE EAST - 1/2 MILE SOUTH - EAST INTO

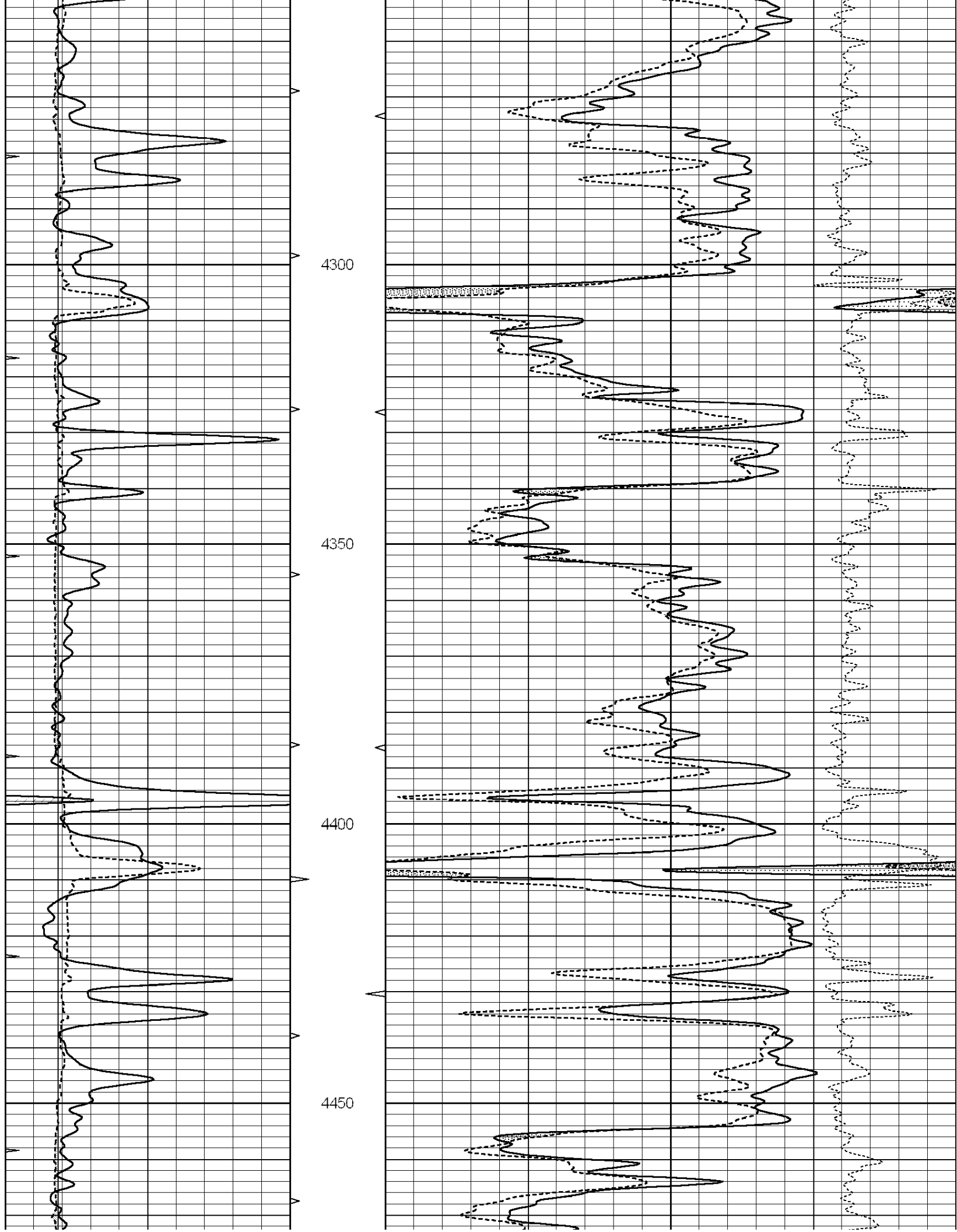
0	GAMMA RAY (GAPI)	150	ABHV	30	COMPENSATED DENSITY (pu)	-10
6	CALIPER (in)	16	10 (ft3)	0 30	COMPENSATED NEUTRON (pu)	-10
0	MINMK	20	TBHV		-0.25 CORRECTION (g/cc)	0.25
			0 (ft3)	10		

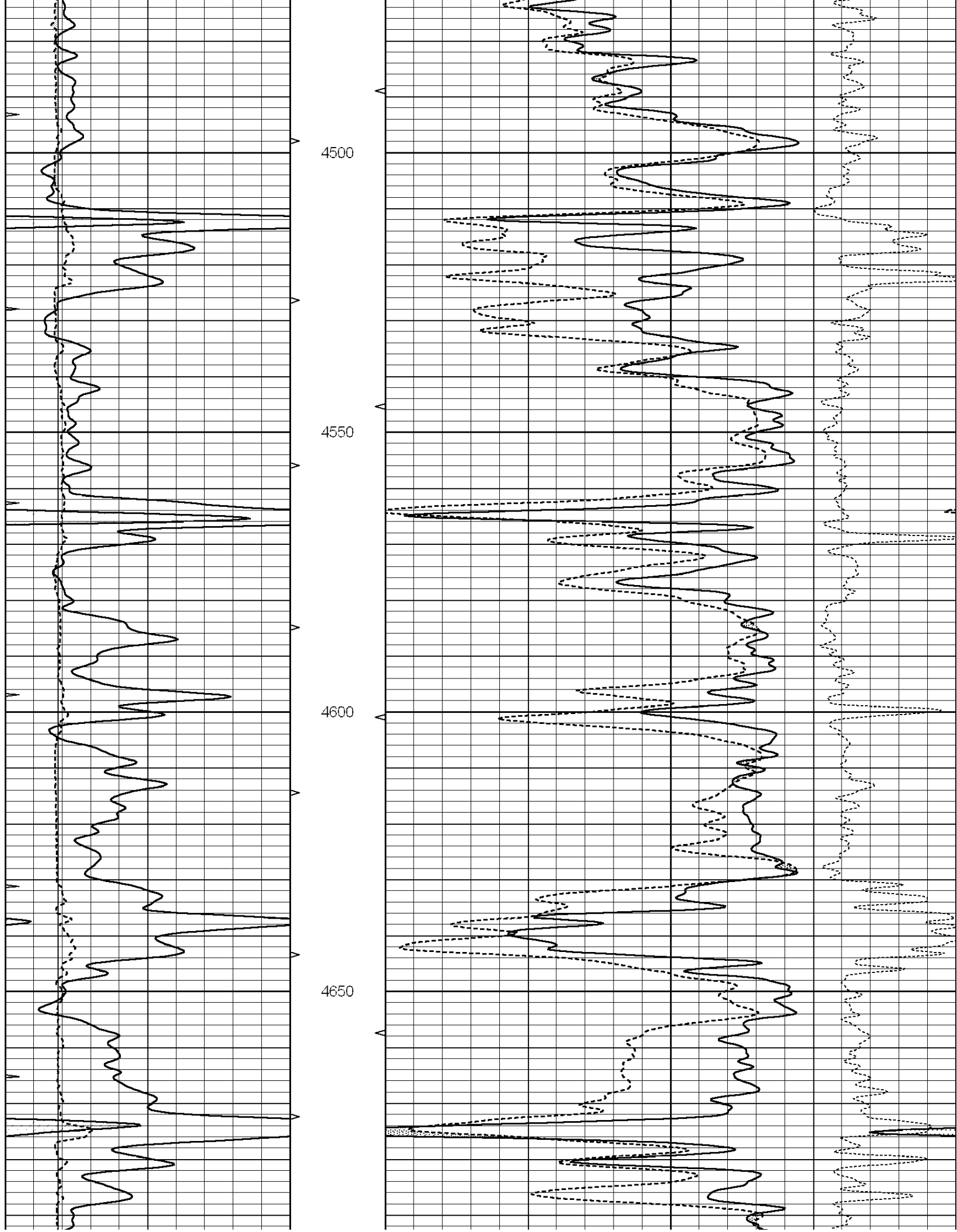


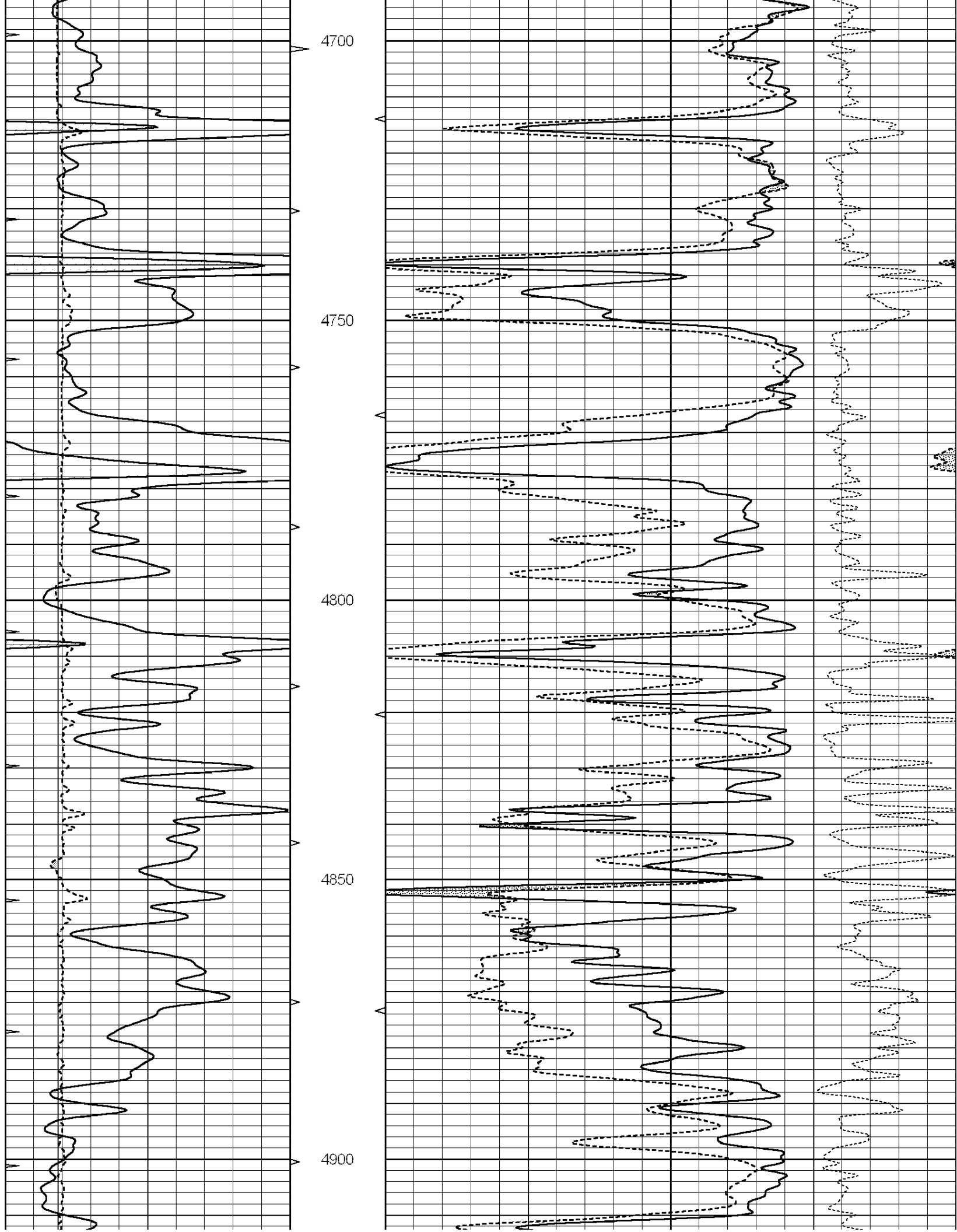


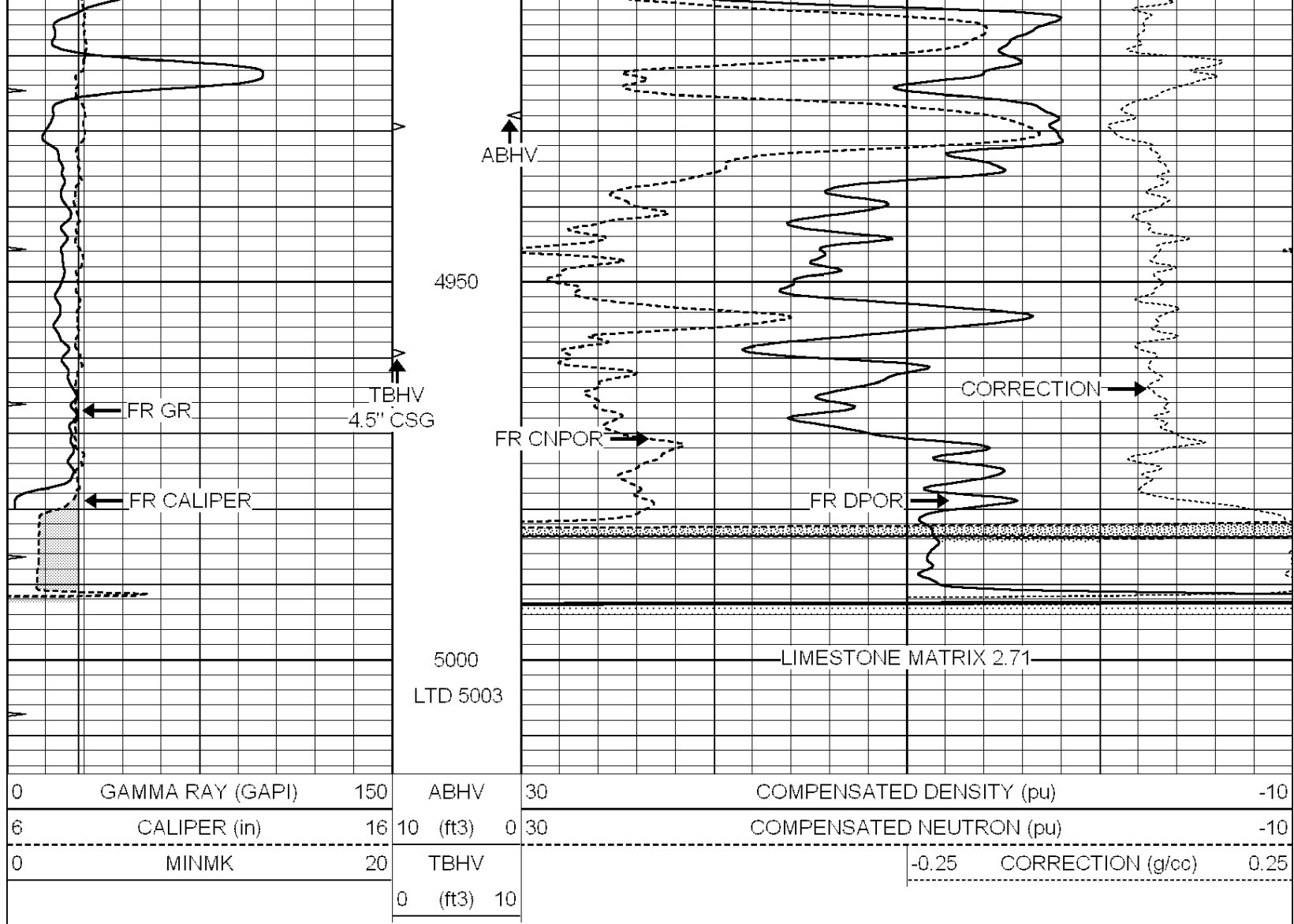










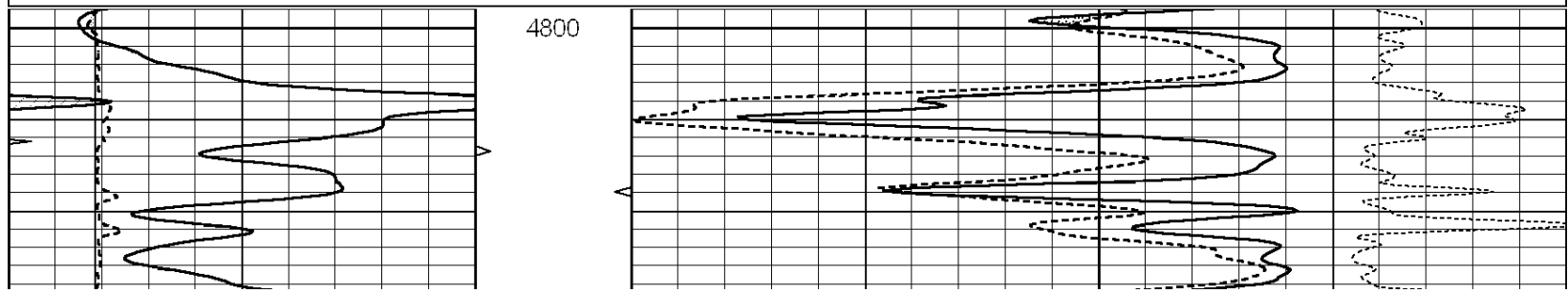


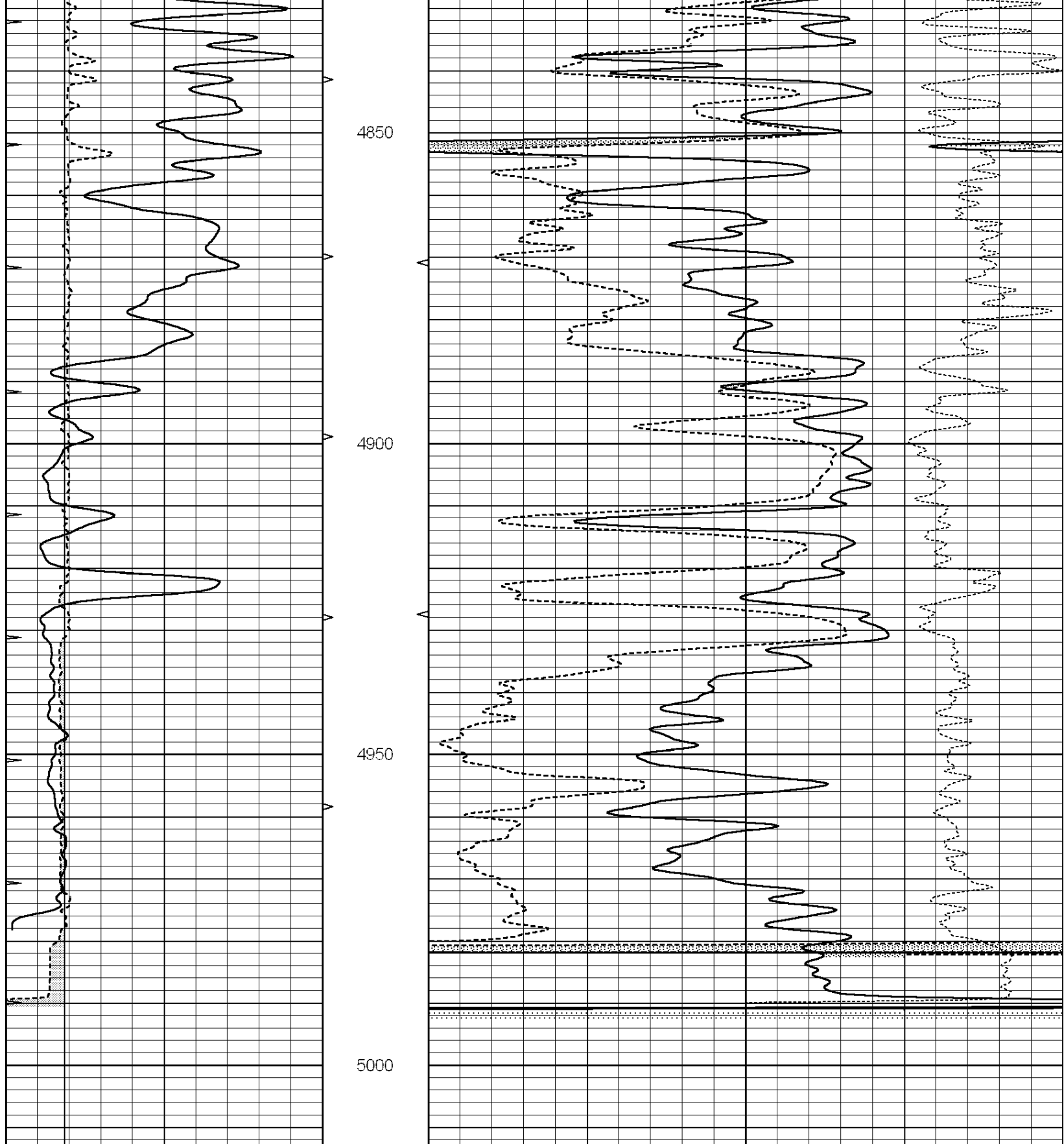
**NABORS**  
**COMPLETION & PRODUCTION SERVICES CO.**

# REPEAT SECTION

Database File: 010212ddn.db  
 Dataset Pathname: pass2.8  
 Presentation Format: \_den\_neu  
 Dataset Creation: Tue Oct 08 12:35:15 2013 by Calc Open-Cased 090629  
 Charted by: Depth in Feet scaled 1:240

0	GAMMA RAY (GAPI)	150	ABHV	30	COMPENSATED DENSITY (pu)	-10
6	CALIPER (in)	16	10 (ft3)	0 30	COMPENSATED NEUTRON (pu)	-10
0	MINMK	20	TBHV		-0.25	CORRECTION (g/cc) 0.25
			0 (ft3)	10		





0	GAMMA RAY (GAPI)	150	ABHV	30	COMPENSATED DENSITY (pu)	-10
6	CALIPER (in)	16	10 (ft3)	0 30	COMPENSATED NEUTRON (pu)	-10
0	MINMK	20	TBHV		-0.25 CORRECTION (g/cc)	0.25
			0 (ft3)	10		

Calibration Report

### Dual Induction Calibration Report

Serial-Model: DIL3-GEAR  
 Performed: Fri Oct 04 10:52:47 2013

Loop:	Readings			References			Results	
	Air	Loop		Air	Loop		m	b
Deep	0.011	0.656	V	0.000	400.000	mmho/m	440.000	6.000
Medium	0.013	0.740	V	0.000	462.500	mmho/m	510.000	7.000
Internal:	Zero	Cal		Zero	Cal		m	b
Deep	0.002	0.645	V	0.000	400.000	mmho/m	560.000	-1.071
Medium	0.007	0.740	V	0.000	462.500	mmho/m	540.000	-4.000

### Compensated Density Calibration Report

Serial-Model: GEAR1-GEARHART  
 Source / Verifier: 147 / 147  
 Master Calibration Performed: Fri Oct 04 10:04:49 2013

#### Master Calibration

	Density		Far Detector	Near Detector	
Magnesium	1.710	g/cc	1205.77	610.74	cps
Aluminum	2.570	g/cc	271.21	419.72	cps
Spine Angle = 75.89			Density/Spine Ratio = 0.559		
	Size		Reading		
Small Ring	8.20	in	4.83	V	
Large Ring	14.00	in	7.01	V	

### Compensated Neutron Calibration Report

Serial Number: NEU\_4I  
 Tool Model: G

#### CALIBRATION

Detector	Readings		Target		Normalization
Short Space	1.00	cps	1.00	cps	1.0000
Long Space	1.00	cps	1.00	cps	1.0000

### Gamma Ray Calibration Report

Serial Number: GR5  
 Tool Model: OPEN  
 Performed: Fri Oct 04 13:15:45 2013

Calibrator Value: 1.0 GAPI

Background Reading: 0.0 cps  
 Calibrator Reading: 1.0 cps

Sensitivity: 0.8800 GAPI/cps