



**COMPLETION
& PRODUCTION
SERVICES CO.**

**COMPENSATED
DENSITY / NEUTRON
LOG**

Company DOLOMITE RESOURCES CORP.
Well RIEDEL #33-1
Field WILDCAT
County GRAHAM
State KANSAS

Company DOLOMITE RESOURCES CORPORATION
Well RIEDEL #33-1
Field WILDCAT
County GRAHAM State KANSAS

Location: API # : 15-065-24106-0000
2970' FSL & 1123' FWL
E/2 - SE - SW - NW
SEC 33 TWP 10S RGE 25W

Permanent Datum GROUND LEVEL Elevation 2478
Log Measured From KELLY BUSHING 8' A.G.L.
Drilling Measured From KELLY BUSHING

Other Services
DIL/MEL
SONIIC
Elevation

Date	8/25/75
Run Number	ONE
Depth Driller	4400
Depth Logger	4400
Bottom Logged Interval	4376
Top Log Interval	3500
Casing Driller	8 5/8" @ 218'
Casing Logger	218
Bit Size	7 7/8"
Type Fluid in Hole	CHEMICAL MUD
Density / Viscosity	9.2/55
pH / Fluid Loss	10.0/8.0
Source of Sample	FLOWLINE
Rim @ Meas. Temp	.650 @ 90F
Rmf @ Meas. Temp	.488 @ 90F
Rmc @ Meas. Temp	.780 @ 90F
Source of Rmf / Rmc	MEASUREMENT
Rim @ BHT	.488 @ 120F
Time Circulation Stopped	2.5 HOURS
Time Logger on Bottom	9:15 A.M.
Maximum Recorded Temperature	120F
Equipment Number	4854
Location	HAYS, KANSAS
Recorded By	JEFF LUEBBERS
Witnessed By	TOM PRONOLD

<<< Fold Here >>>

All interpretations are opinions based on inferences from electrical or other measurements and we cannot and do not guarantee the accuracy or correctness of any interpretation, and we shall not, except in the case of gross or willful negligence on our part, be liable or responsible for any loss, costs, damages, or expenses incurred or sustained by anyone resulting from any interpretation made by any of our officers, agents or employees. These interpretations are also subject to our general terms and conditions set out in our current Price Schedule.

Comments

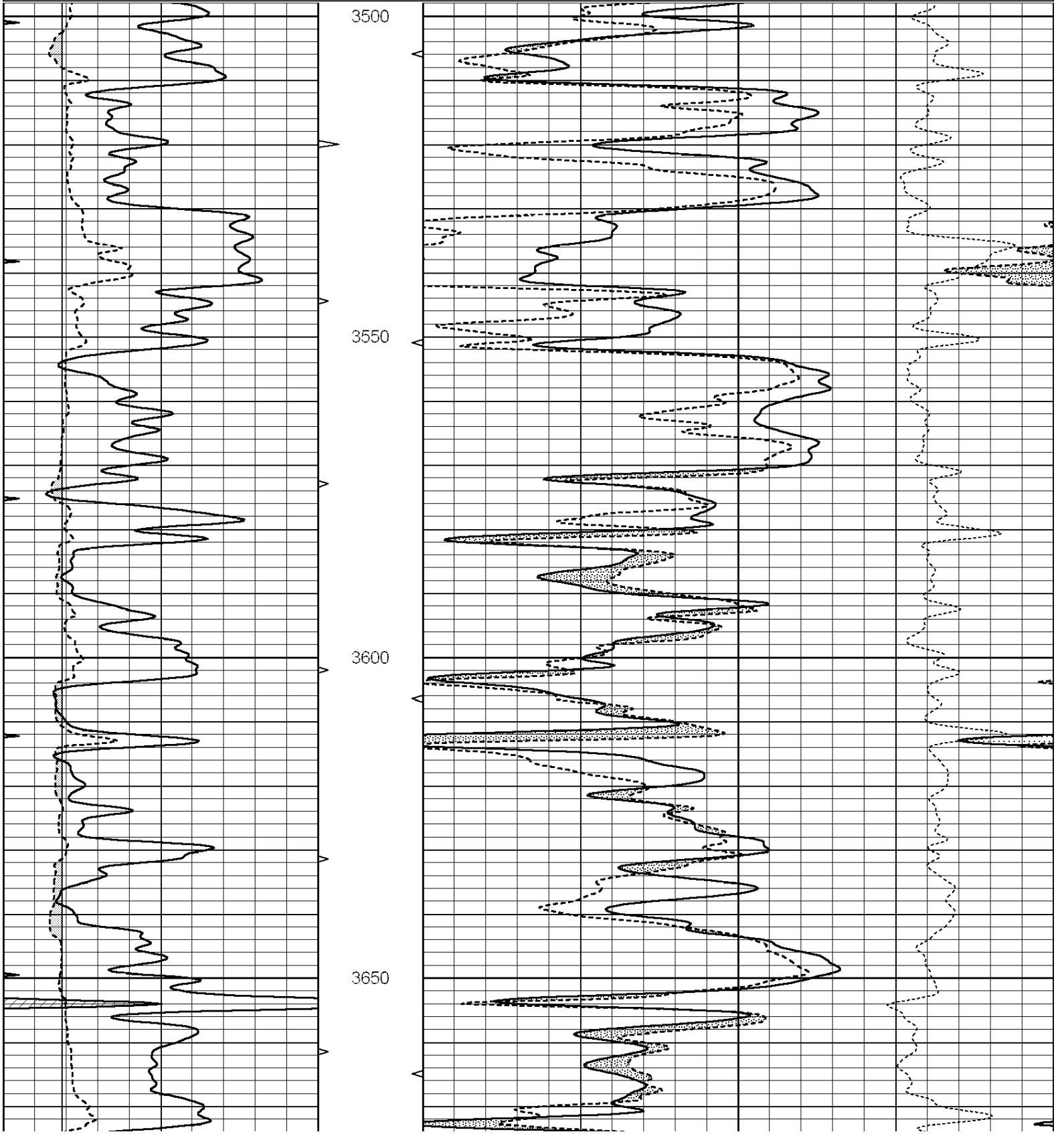
THANK YOU FOR USING "NABORS" HAYS, KANSAS (785) 628-6395
DIRECTIONS
COLLYER, KS. & I-70, 1/2N. TO STOP SIGN, E. TO "140 RD.", (ST. PETER RD.) 7N. TO "A RD.", 3W. AT
CURVE, 1/2N., E. INTO

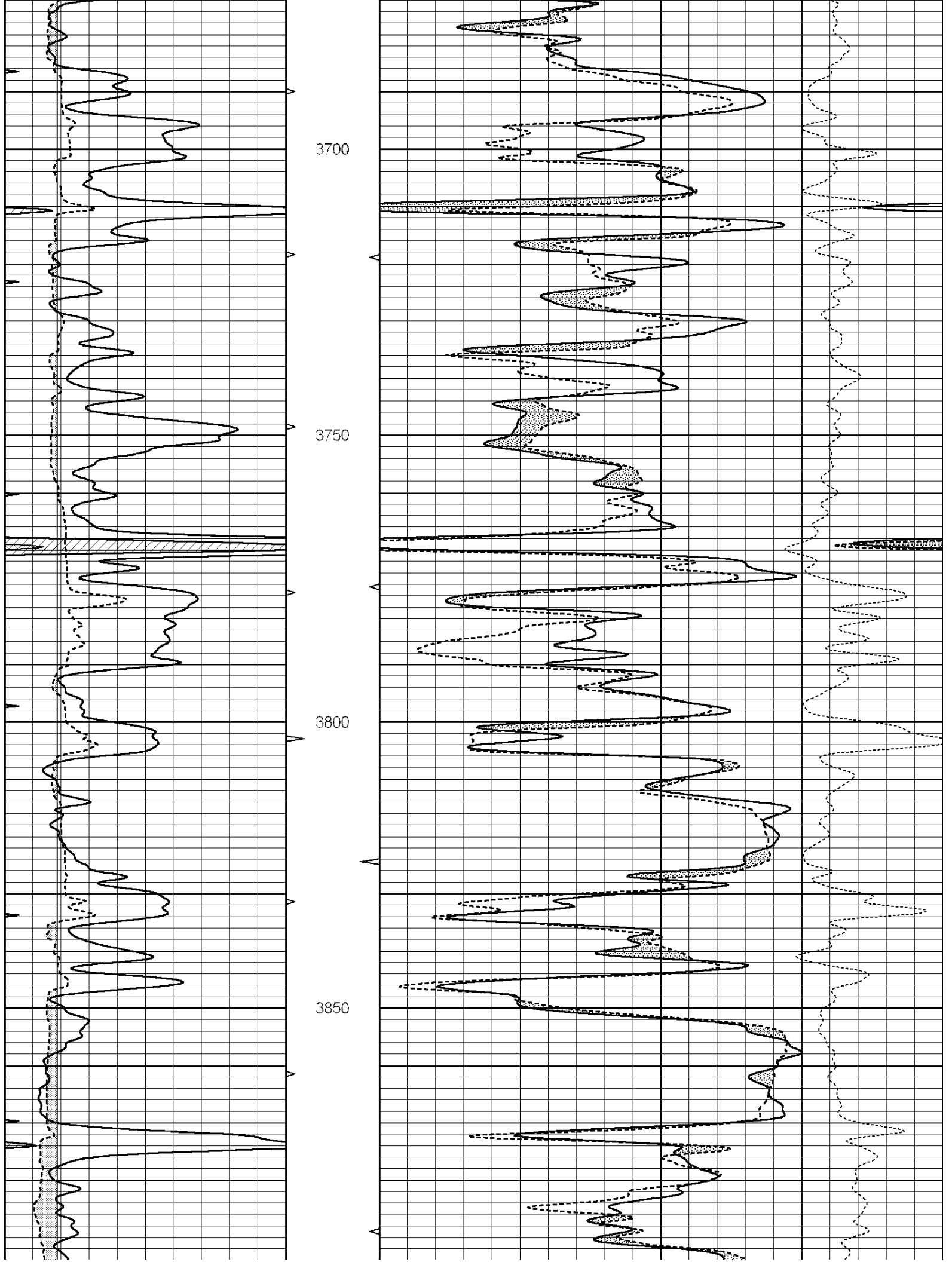


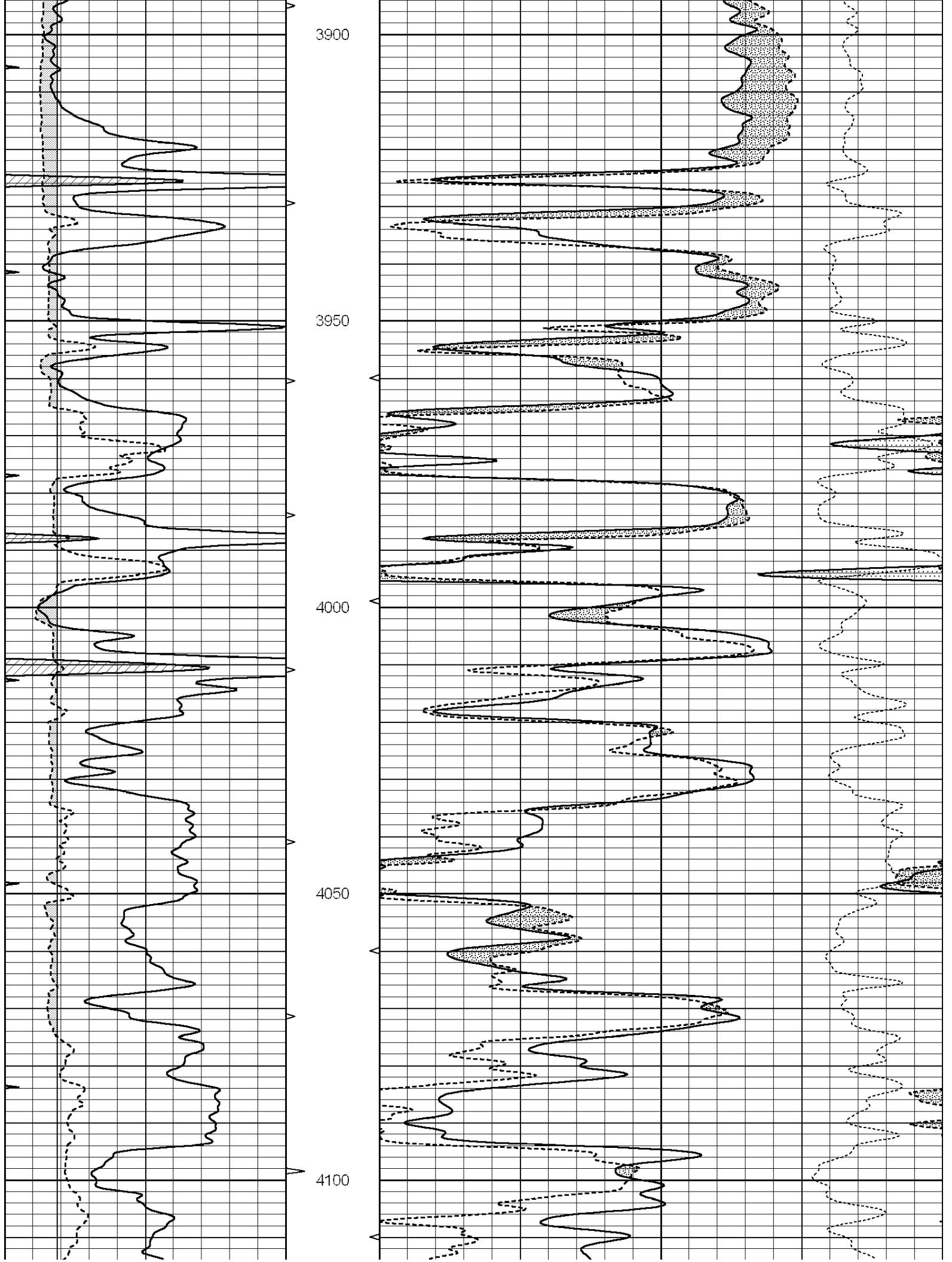
MAIN SECTION

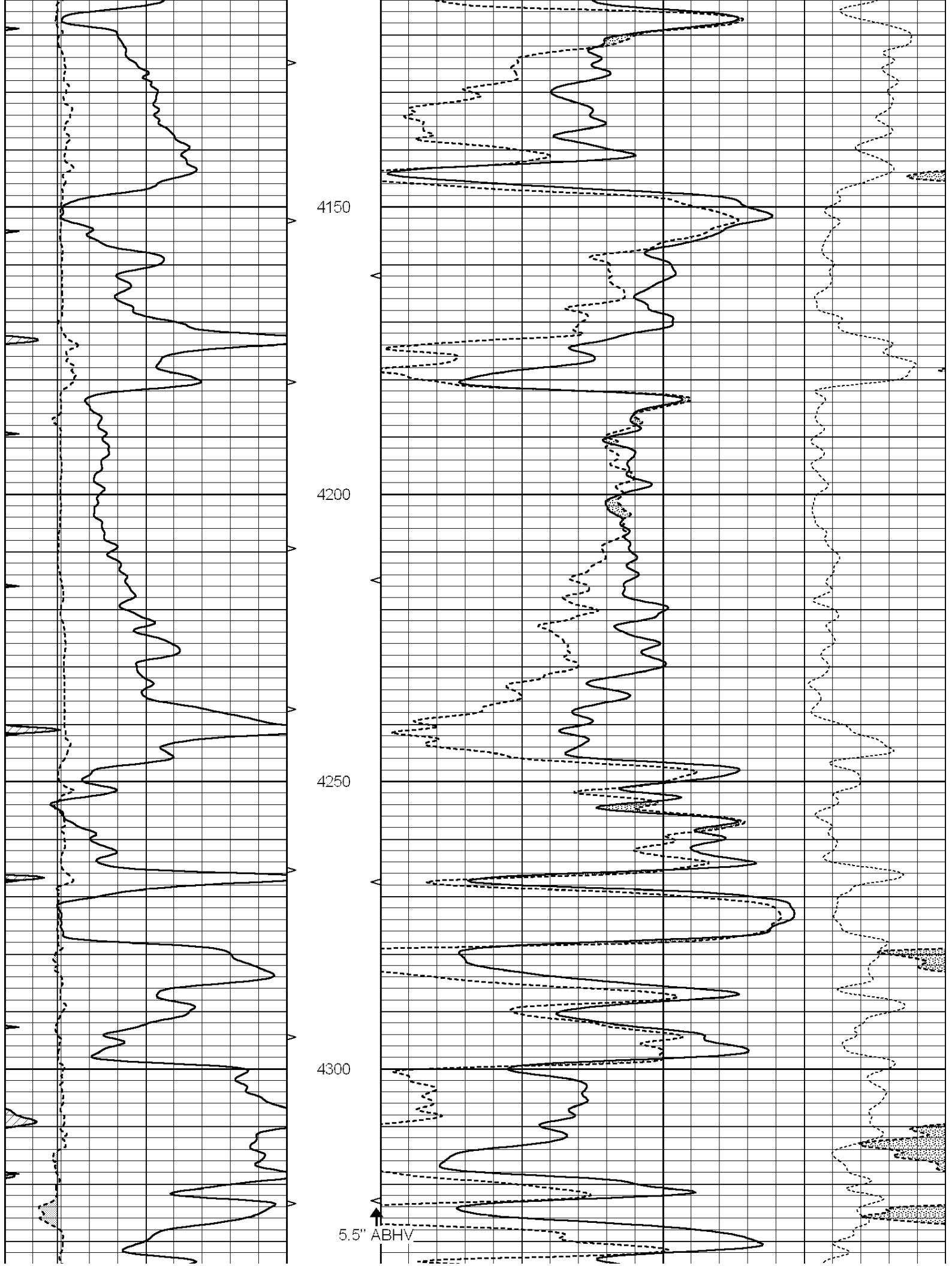
Database File: 26634ddn.db
 Dataset Pathname: pass3.3
 Presentation Format: den_neu
 Dataset Creation: Tue Aug 25 10:32:51 2015 by Calc SOC 120430
 Charted by: Depth in Feet scaled 1:240

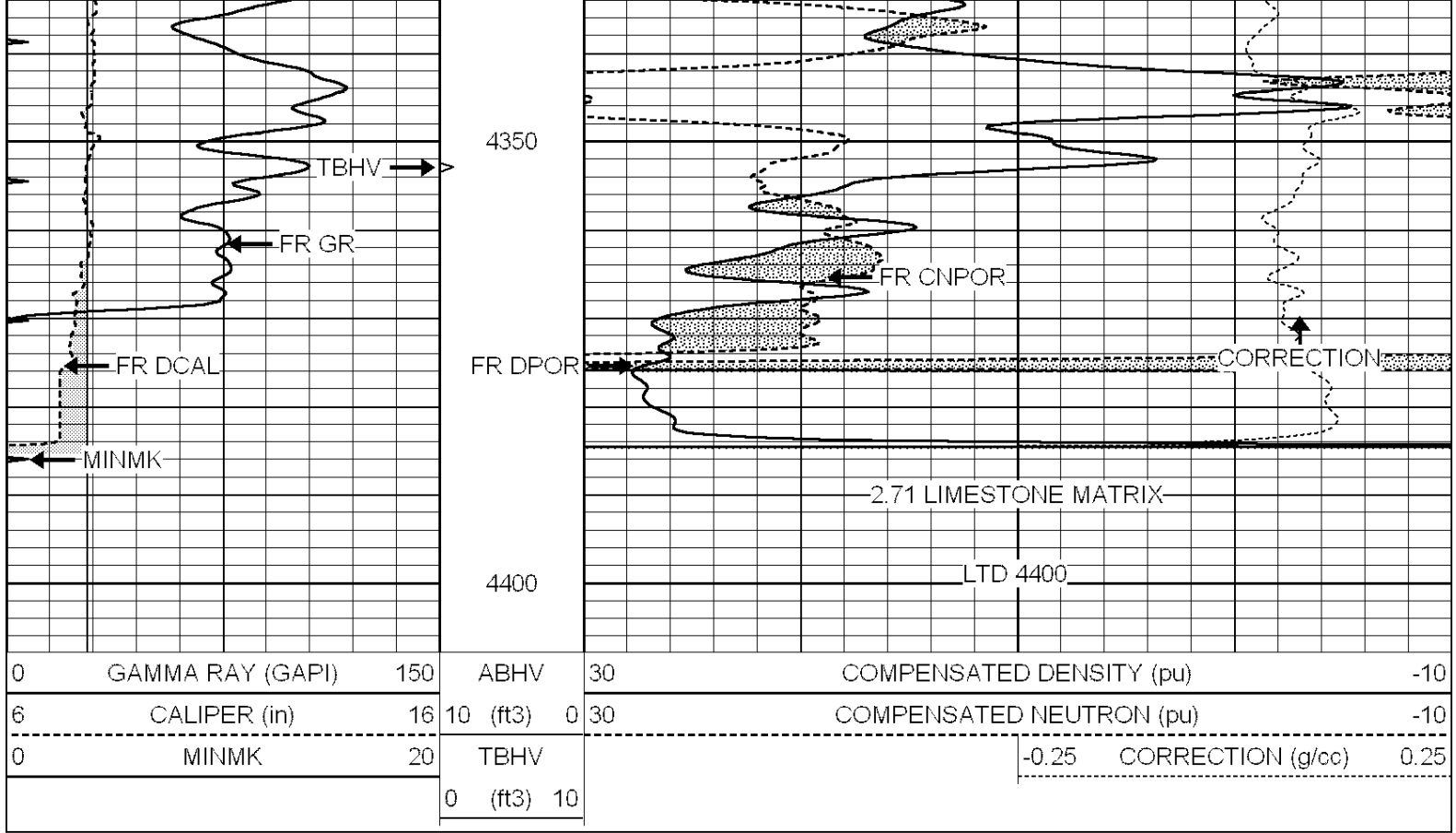
0	GAMMA RAY (GAPI)	150	ABHV	30	COMPENSATED DENSITY (pu)	-10
6	CALIPER (in)	16	10 (ft3)	0 30	COMPENSATED NEUTRON (pu)	-10
0	MINMK	20	TBHV		-0.25 CORRECTION (g/cc)	0.25
			0 (ft3)	10		







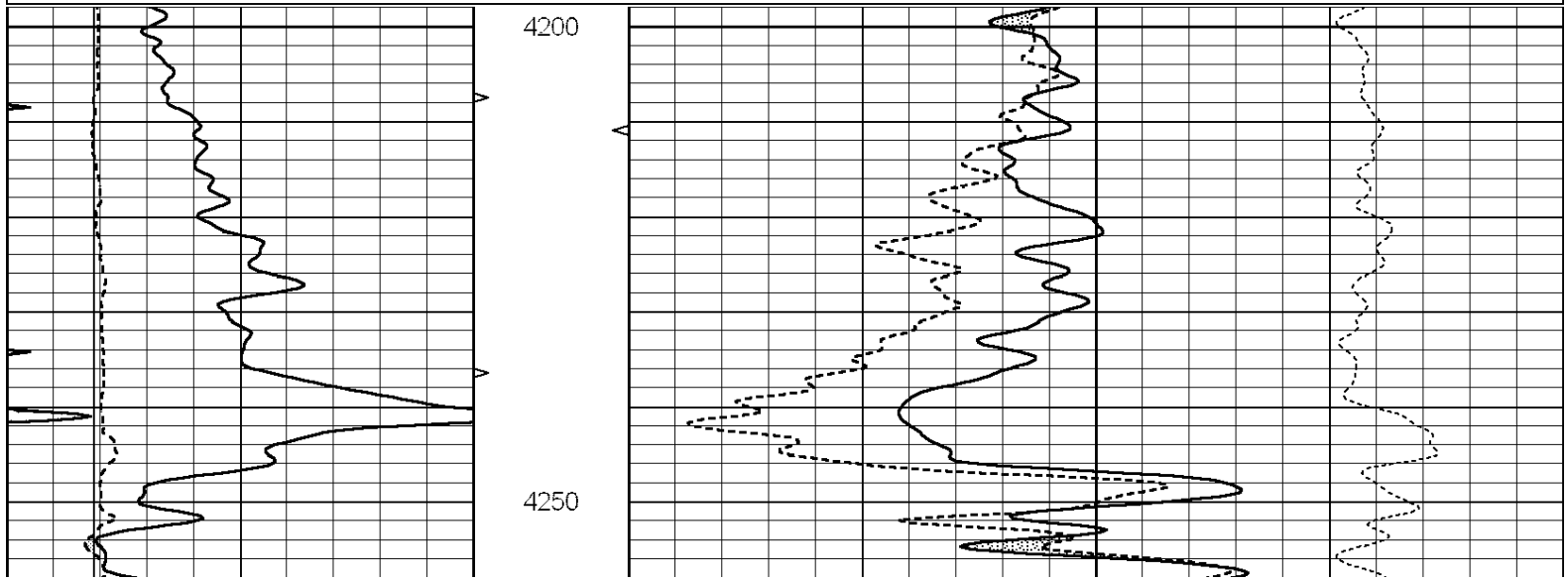


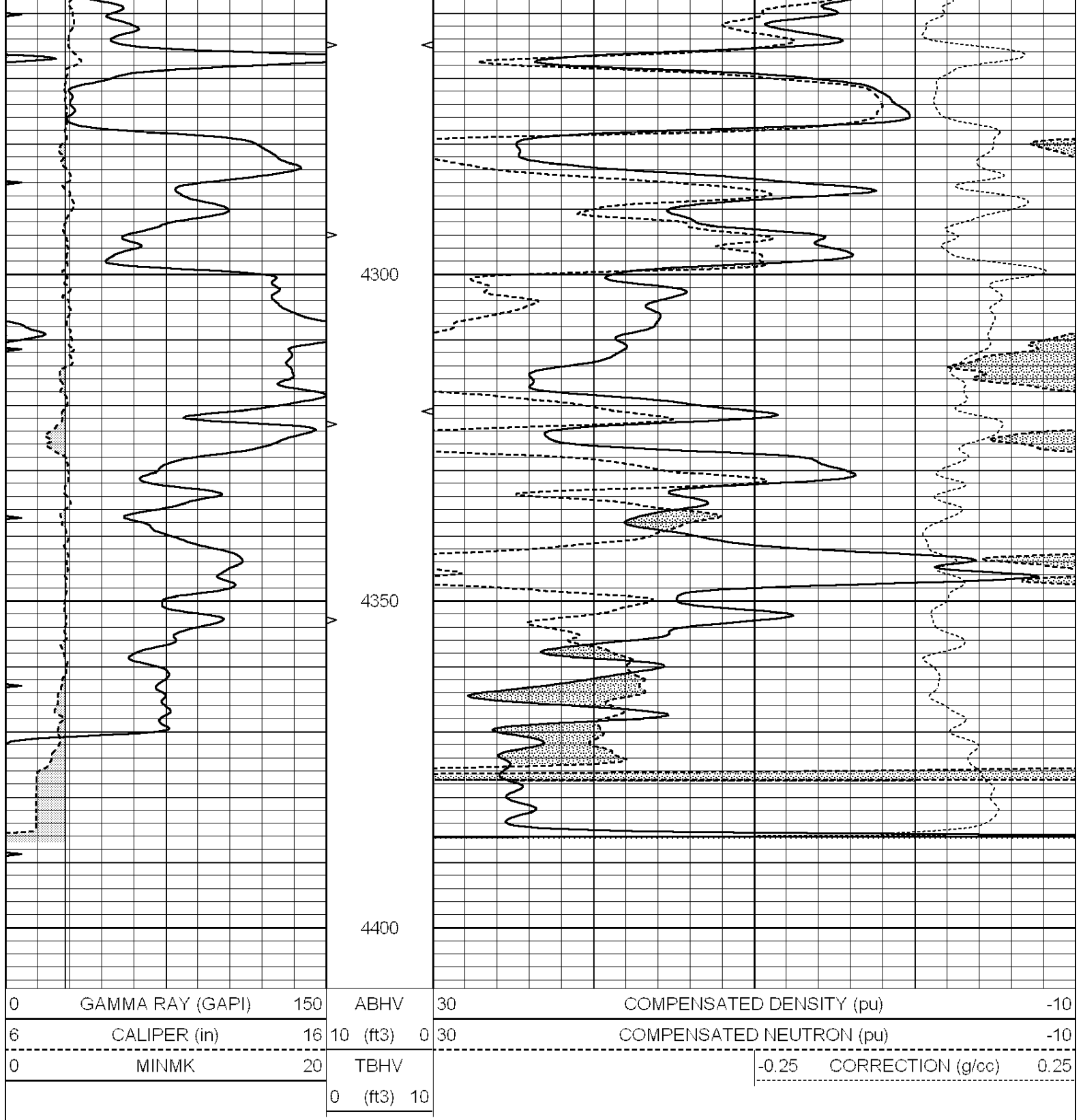


REPEAT SECTION

Database File: 26634ddn.db
 Dataset Pathname: pass2.8
 Presentation Format: den_neu
 Dataset Creation: Tue Aug 25 10:50:10 2015 by Calc SOC 120430
 Charted by: Depth in Feet scaled 1:240

0	GAMMA RAY (GAPI)	150	ABHV	30	COMPENSATED DENSITY (pu)	-10	
6	CALIPER (in)	16	10 (ft3)	0 30	COMPENSATED NEUTRON (pu)	-10	
0	MINMK	20	TBHV		-0.25	CORRECTION (g/cc)	0.25
			0 (ft3)	10			





Calibration Report

Database File: 26634ddn.db
 Dataset Pathname: pass3.3
 Dataset Creation: Tue Aug 25 10:32:51 2015 by Calc SOC 120430

Dual Induction Calibration Report

Serial-Model: PROBE9-DILG
 Surface Cal Performed: Thu Aug 13 21:13:38 2015
 Downhole Cal Performed: Mon Jul 28 12:02:56 2008
 After Survey Verification Performed: Mon Jul 28 12:02:56 2008

Loop:	Readings			References			Results	
	Air	Loop		Air	Loop		m	b
Deep	-0.014	0.629	V	0.000	400.000	mmho/m	670.000	-16.000
Medium	0.039	0.728	V	0.000	464.000	mmho/m	670.000	-28.000
Internal:	Zero	Cal		Zero	Cal		m	b
Deep	0.011	0.610	V	0.000	400.000	mmho/m	667.135	-7.256
Medium	0.005	0.712	V	0.000	464.000	mmho/m	655.677	-3.102

Downhole Calibration								
	Readings			References			Results	
	Zero	Cal		Zero	Cal		m'	b'
Deep	0.000	0.000	mmho/m	14.508	388.384	mmho/m	1.000	0.000
Medium	0.000	0.000	mmho/m	166.367	504.400	mmho/m	1.000	0.000
LL3		7.500	V		1400.000	Ohm-m		
		0.000	V		20.000	Ohm-m		
		-7.200	V		4000.000	mmho-m		

After Survey Verification								
	Readings			Targets			Results	
	Zero	Cal		Zero	Cal		m'	b'
Deep	0.000	0.000	mmho/m	0.000	0.000	mmho/m	0.000	0.000
Medium	0.000	0.000	mmho/m	0.000	0.000	mmho/m	0.000	0.000
LL3		1.000	Ohm-m		1.000	Ohm-m		
		0.000	Ohm-m		0.000	Ohm-m		
		1.000	mmho-m		1.000	mmho-m		

Litho Density Calibration Report
Serial: 003N Model: PRB

Master Calibration				Performed Tue Sep 08 14:14:44 2009			
	Background	Magnesium		Aluminum	Sandstone		
Window 1	2042.6	12312.8		4225.8	13758.4		cps
Window 2	1855.8	10134.7		3624.2	11113.1		cps
Window 3	1639.4	6760.2		2716.3	7260.3		cps
Window 4	466.4	469.2		466.1	476.5		cps
Long Space	0.0	8278.9		1768.4	9257.4		cps
Short Space	2.2	2377.3		1544.1	2574.2		cps
Rho		1.7100		2.5900	1.3800		g/cc
Pe		0.0000		2.5700	1.5500		
Rib Angle	: 44.4	Rib Slope	: 0.979	Density/Spine Ratio		: 0.549	
Spine Angle	: 74.4	Spine Slope	: 3.577	Spine Intercept		: -18.8	

Before Survey Verification				Performed Wed Dec 31 18:00:00 1969			
Window 1	0.0	0.0		0.0	0.0		cps
Window 2	0.0	0.0		0.0	0.0		cps
Window 3	0.0	0.0		0.0	0.0		cps
Window 4	0.0	0.0		0.0	0.0		cps
Long Space	0.0	0.0		0.0	0.0		cps
Short Space	0.0	0.0		0.0	0.0		cps
Measured Rho		0.0000		0.0000	0.0000		g/cc
Measured Correction		0.0000		0.0000	0.0000		g/cc
Measured Pe				0.0000	0.0000		

After Survey Verification Performed Wed Dec 31 18:00:00 1969

Window 1	0.0	0.0	0.0	0.0	cps
Window 2	0.0	0.0	0.0	0.0	cps
Window 3	0.0	0.0	0.0	0.0	cps
Window 4	0.0	0.0	0.0	0.0	cps
Long Space	0.0	0.0	0.0	0.0	cps
Short Space	0.0	0.0	0.0	0.0	cps
Measured Rho		0.0000	0.0000	0.0000	g/cc
Measured Correction		0.0000	0.0000	0.0000	g/cc
Measured Pe			0.0000	0.0000	

Compensated Neutron Calibration Report

Serial Number: 070808
Tool Model: Probe

PRE-SURVEY VERIFICATION

Detector	Readings	Measured	Target
Short Space	cps		
Long Space	cps	pu	pu

POST-SURVEY VERIFICATION

Detector	Readings	Measured	Target
Short Space	cps		
Long Space	cps	pu	pu

Gamma Ray Calibration Report

Serial Number: 070558
Tool Model: OPEN_GR
Performed: Thu Aug 13 23:52:58 2015

Calibrator Value: 1.0 GAPI

Background Reading: 0.0 cps
Calibrator Reading: 1.0 cps

Sensitivity: 0.2800 GAPI/cps