



**COMPLETION
& PRODUCTION
SERVICES CO.**

**SONIC
LOG**

Company DOLOMITE RESOURCES CORP.
Well RIEDEL #33-1
Field WILDCAT
County GRAHAM
State KANSAS

Company DOLOMITE RESOURCES CORPORATION
Well RIEDEL #33-1
Field WILDCAT
County GRAHAM State KANSAS
Location: API # : 15-065-24106-0000
2970' FSL & 1123' FWL
E/2 - SE - SW - NW
SEC 33 TWP 10S RGE 25W
Permanent Datum GROUND LEVEL Elevation 2478
Log Measured From KELLY BUSHING 8' A.G.L.
Drilling Measured From KELLY BUSHING
Other Services
CDL/CNL
DIL/MEL
Elevation
K.B. 2486
D.F. 2484
G.L. 2478

Date	8/25/75
Run Number	TWO
Depth Driller	4400
Depth Logger	4400
Bottom Logged Interval	4392
Top Log Interval	200
Casing Driller	8 5/8" @ 218'
Casing Logger	218
Bit Size	7 7/8"
Type Fluid in Hole	CHEMICAL MUD
Density / Viscosity	9.2/55
pH / Fluid Loss	10.0/8.0
Source of Sample	FLOWLINE
Rim @ Meas. Temp	.650 @ 90F
Rmf @ Meas. Temp	.488 @ 90F
Rmc @ Meas. Temp	.780 @ 90F
Source of Rmf / Rmc	MEASUREMENT
Rim @ BHT	.488 @ 120F
Time Circulation Stopped	4.5 HOURS
Time Logger on Bottom	9:15 A.M.
Maximum Recorded Temperature	120F
Equipment Number	4854
Location	HAYS, KANSAS
Recorded By	JEFF LUEBBERS
Witnessed By	TOM PRONOLD

<<< Fold Here >>>

All interpretations are opinions based on inferences from electrical or other measurements and we cannot and do not guarantee the accuracy or correctness of any interpretation, and we shall not, except in the case of gross or willful negligence on our part, be liable or responsible for any loss, costs, damages, or expenses incurred or sustained by anyone resulting from any interpretation made by any of our officers, agents or employees. These interpretations are also subject to our general terms and conditions set out in our current Price Schedule.

Comments

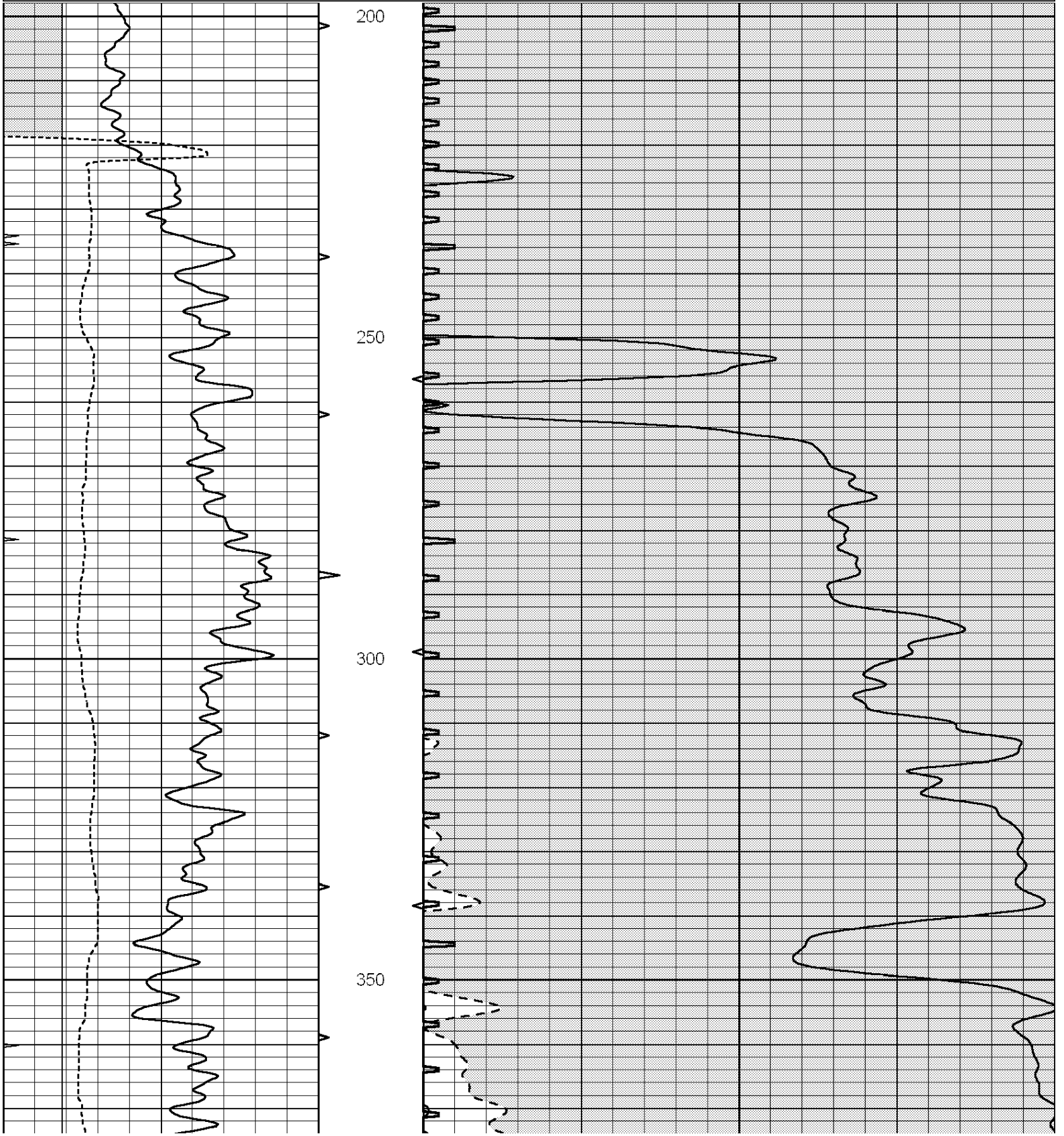
THANK YOU FOR USING "NABORS" HAYS, KANSAS (785) 628-6395
DIRECTIONS
COLLYER, KS. & I-70, 1/2N. TO STOP SIGN, E. TO "140 RD.", (ST. PETER RD.) 7N. TO "A RD.", 3W. AT
CURVE, 1/2N., E. INTO

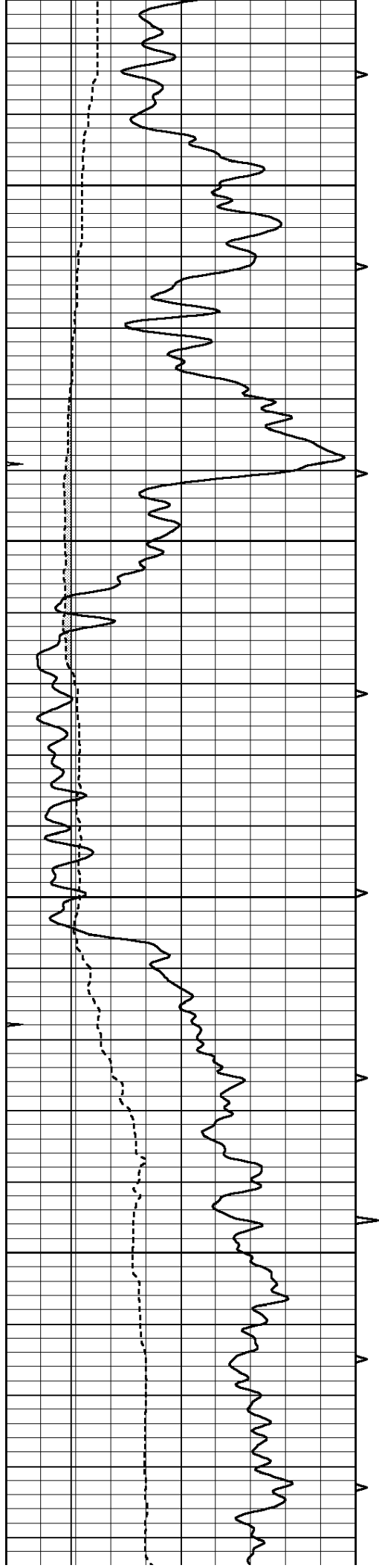


MAIN SECTION

Database File: 26634ddn.db
 Dataset Pathname: pass6.3
 Presentation Format: slt
 Dataset Creation: Tue Aug 25 12:46:02 2015 by Calc SOC 120430
 Charted by: Depth in Feet scaled 1:240

0	GAMMA RAY (GAPI)	150	ABHV	140	DELTA TIME (usec/ft)	40
6	CALIPER (in)	16	10 (ft3)	0	30	SONIC POROSITY (pu)
0	MINMK	20	TBHV	0	ITT (msec)	20
			0 (ft3)	10		



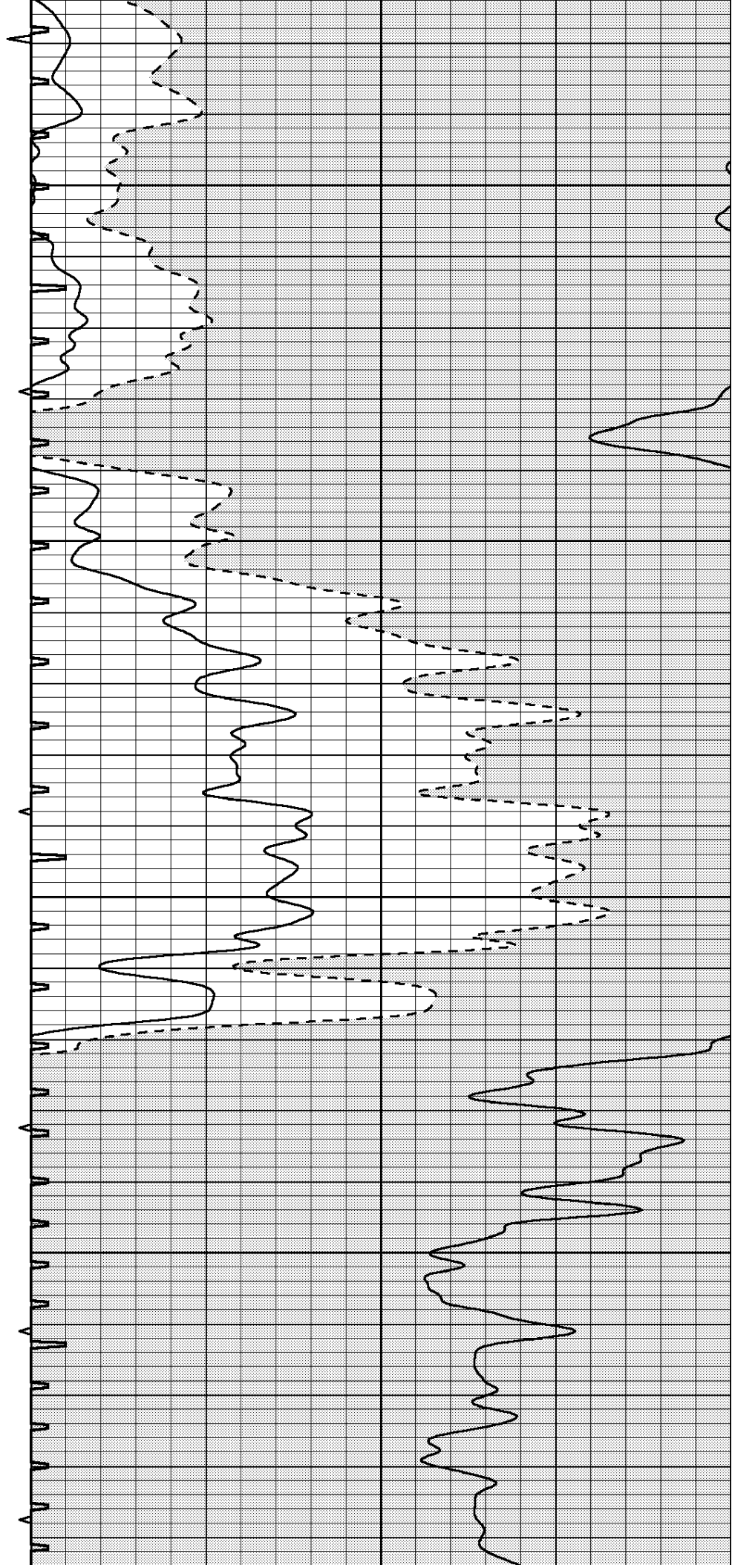


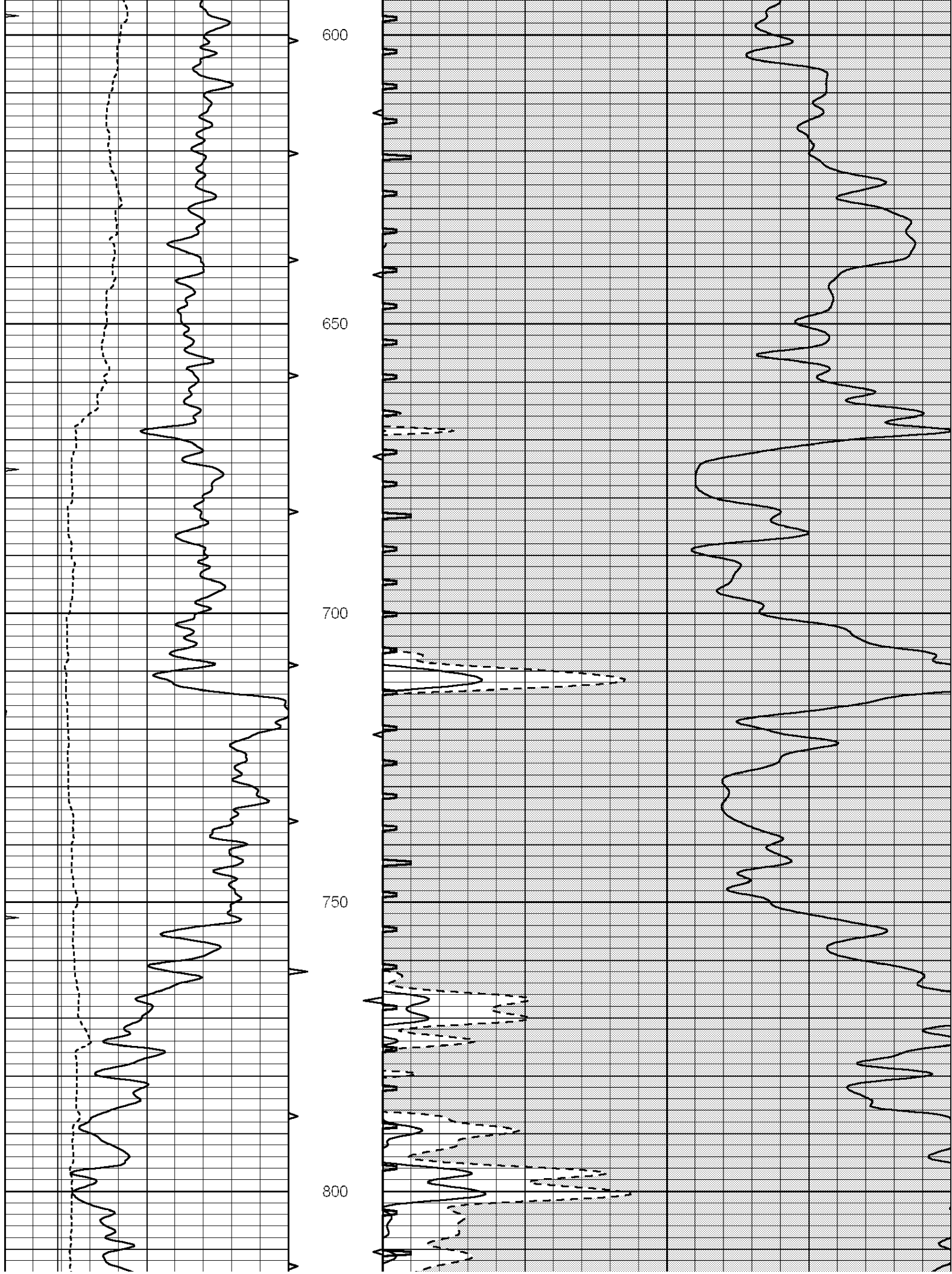
400

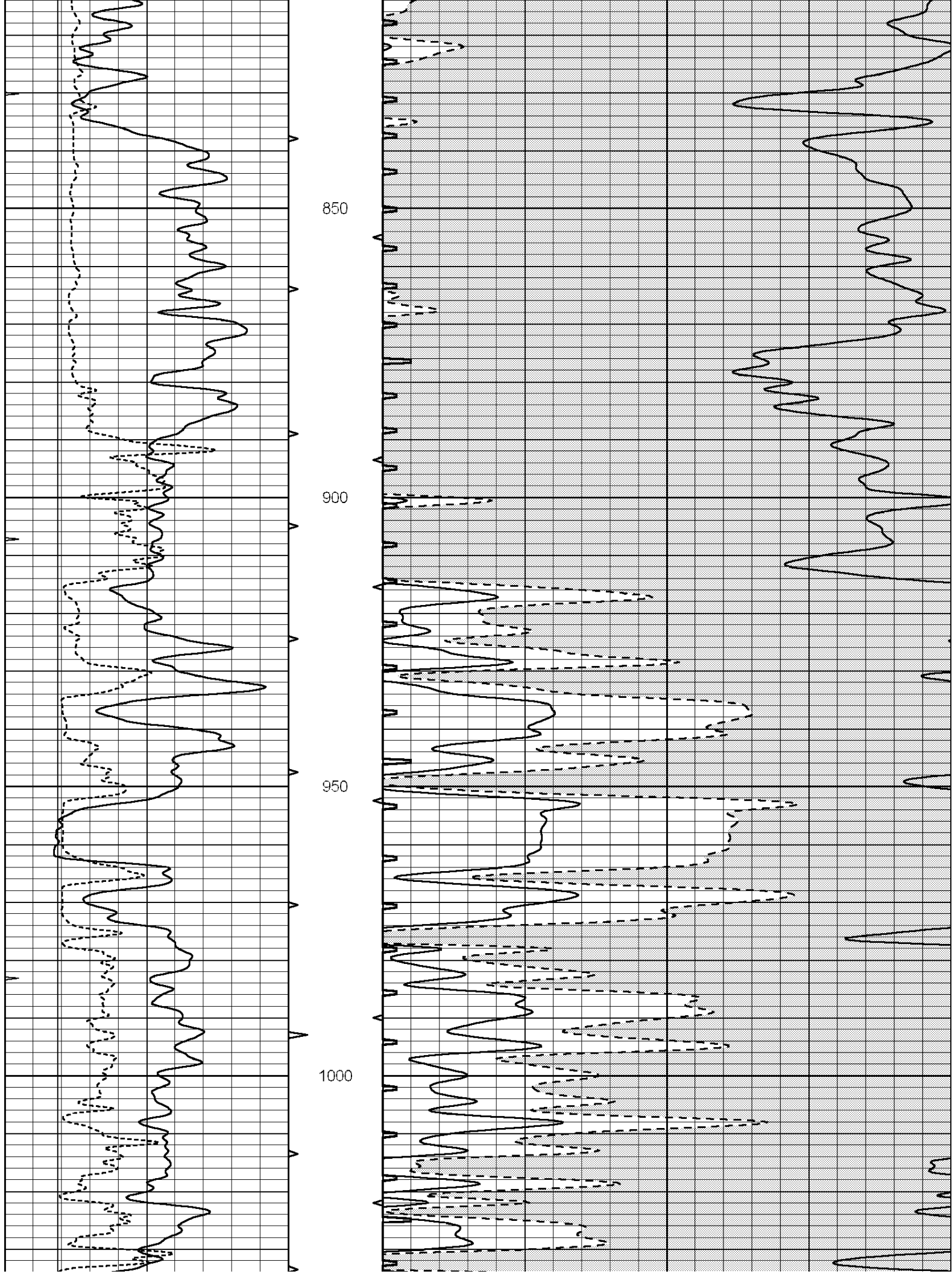
450

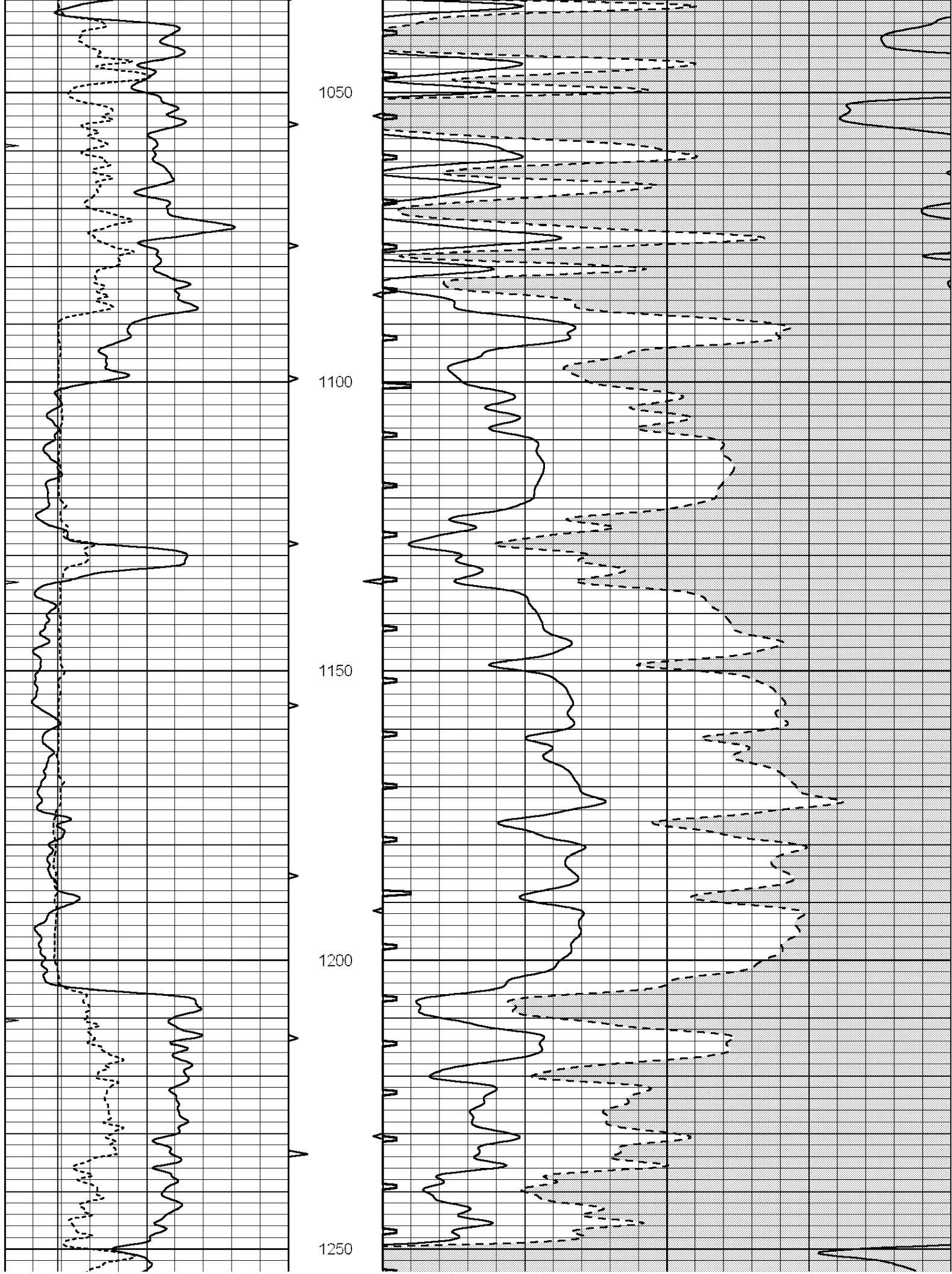
500

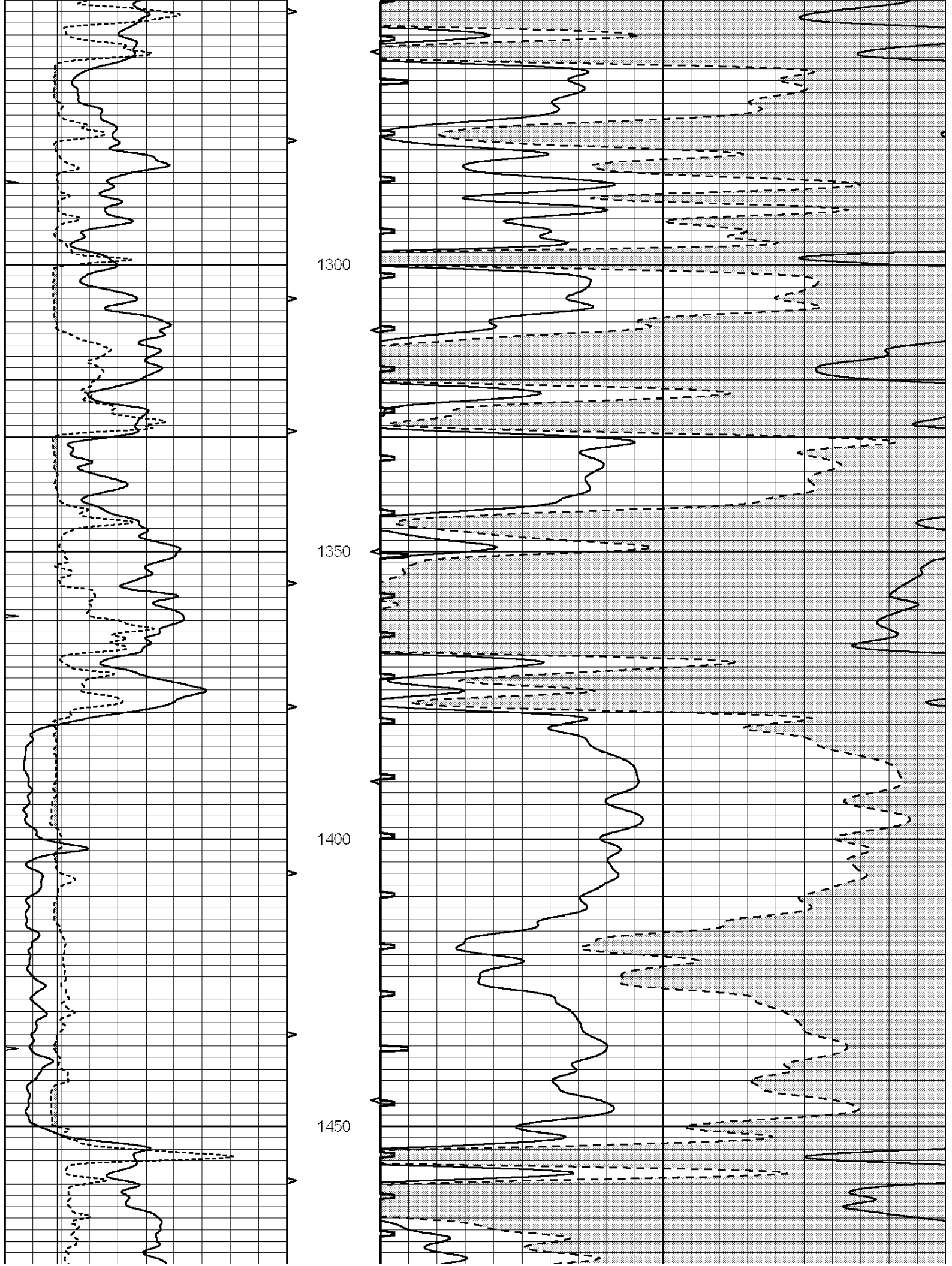
550

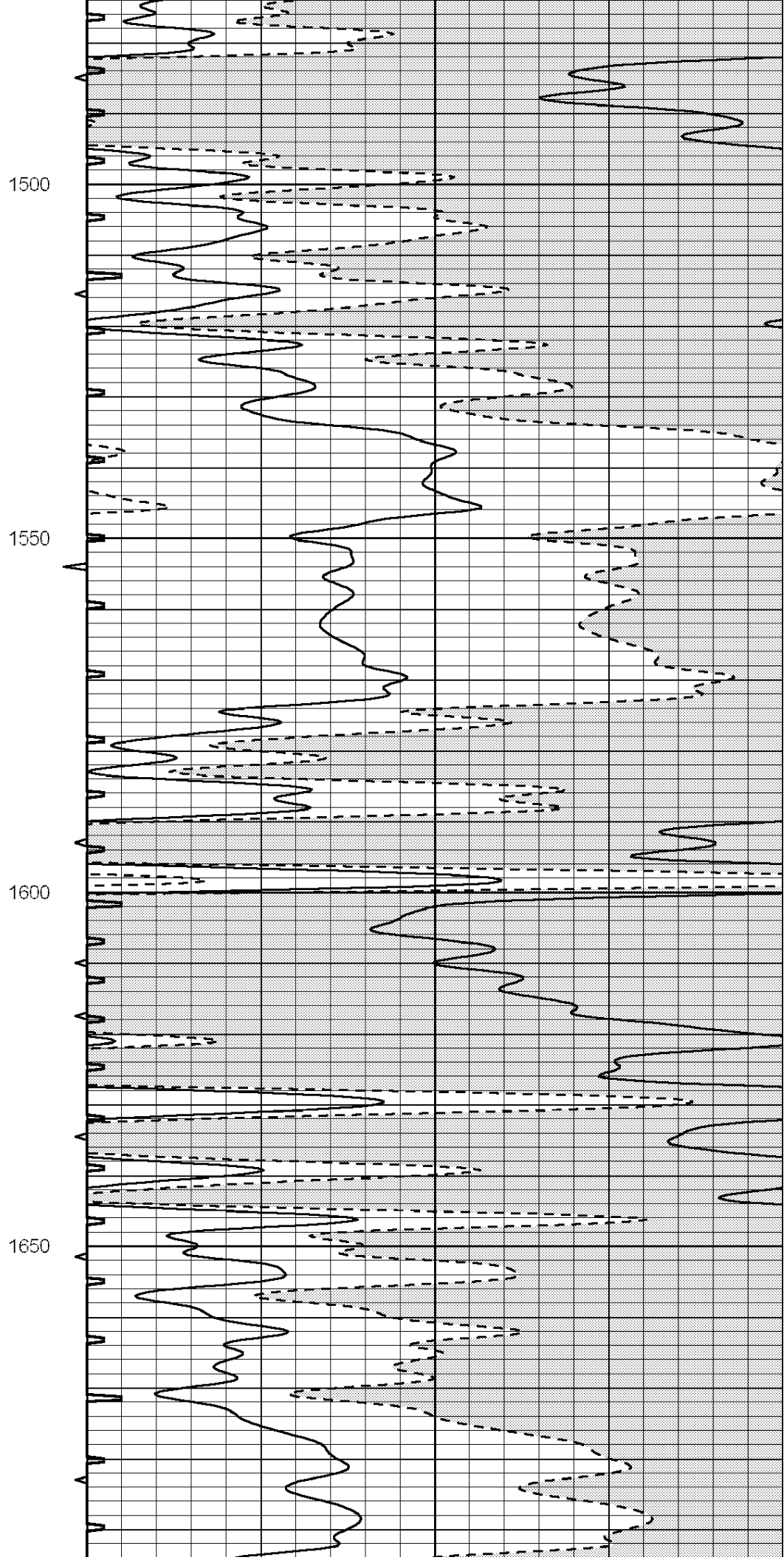
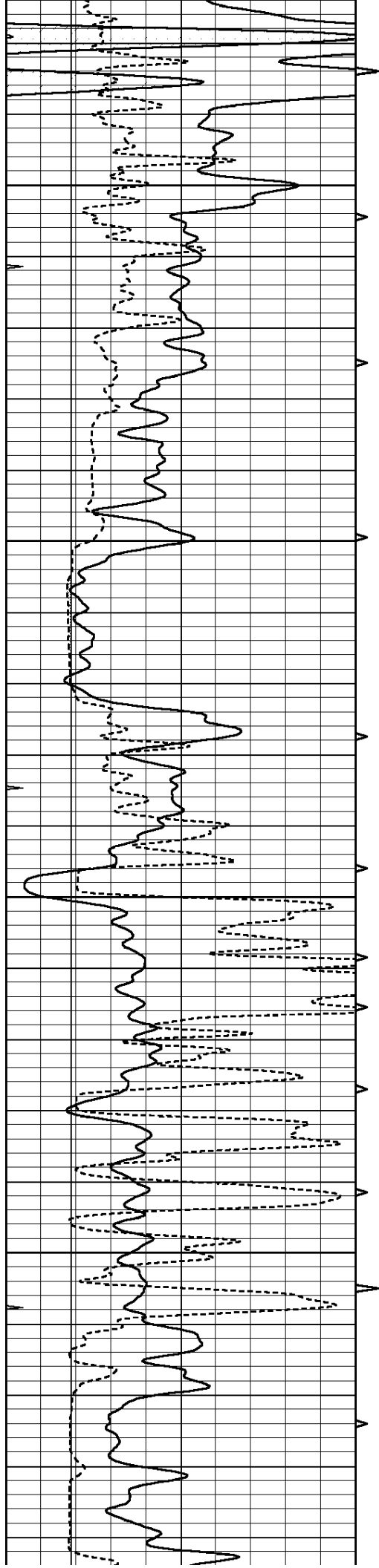


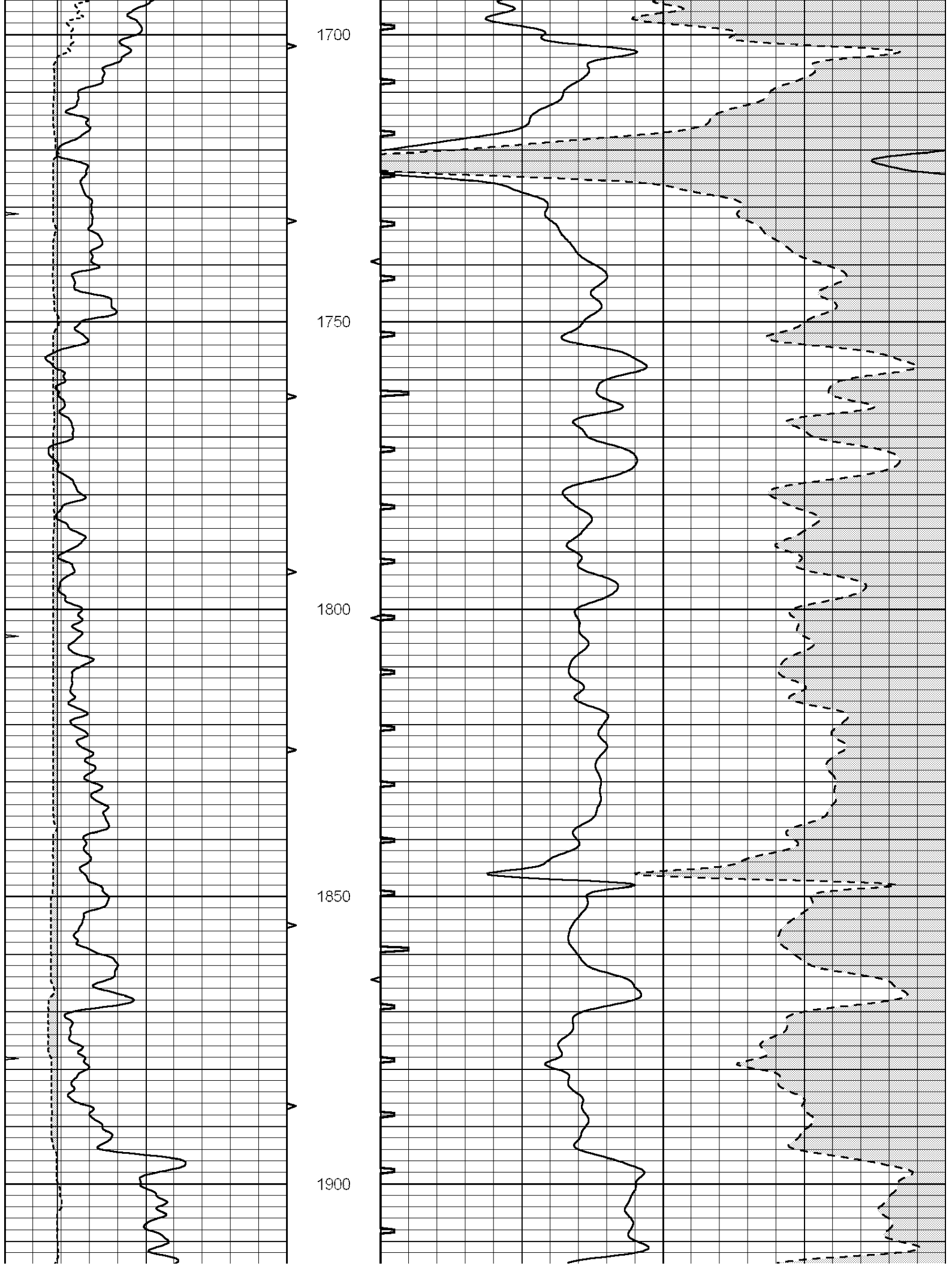


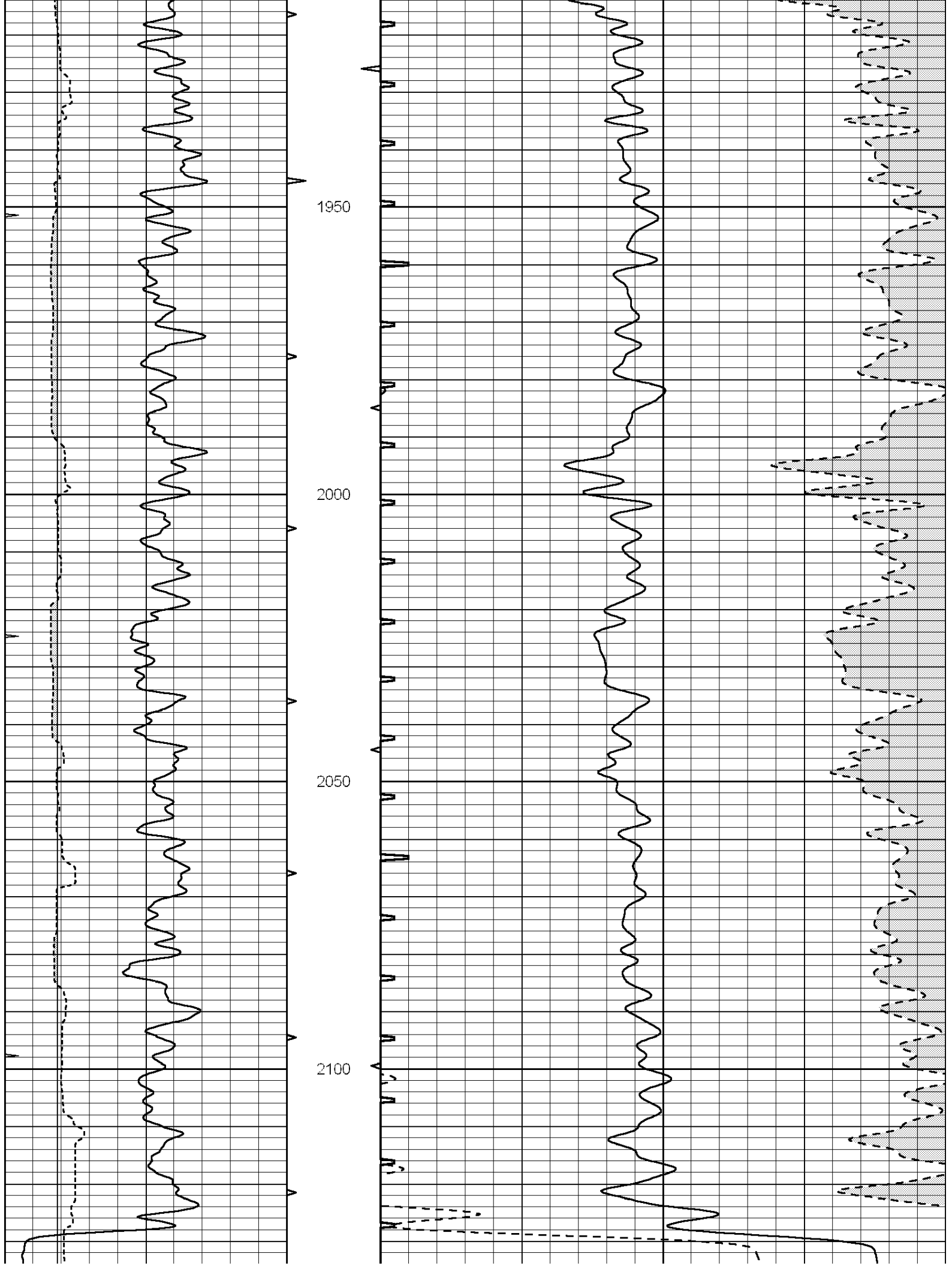


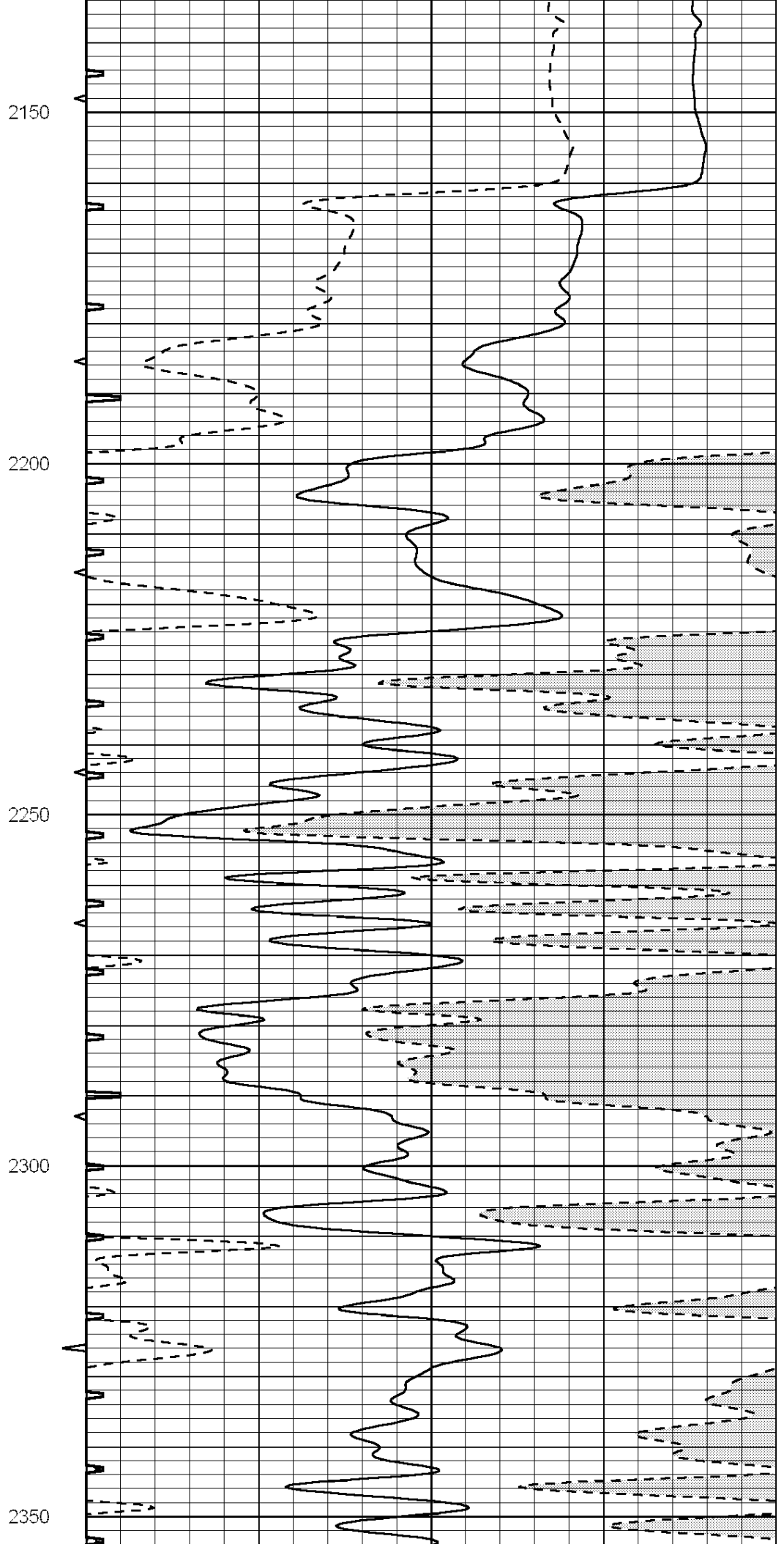
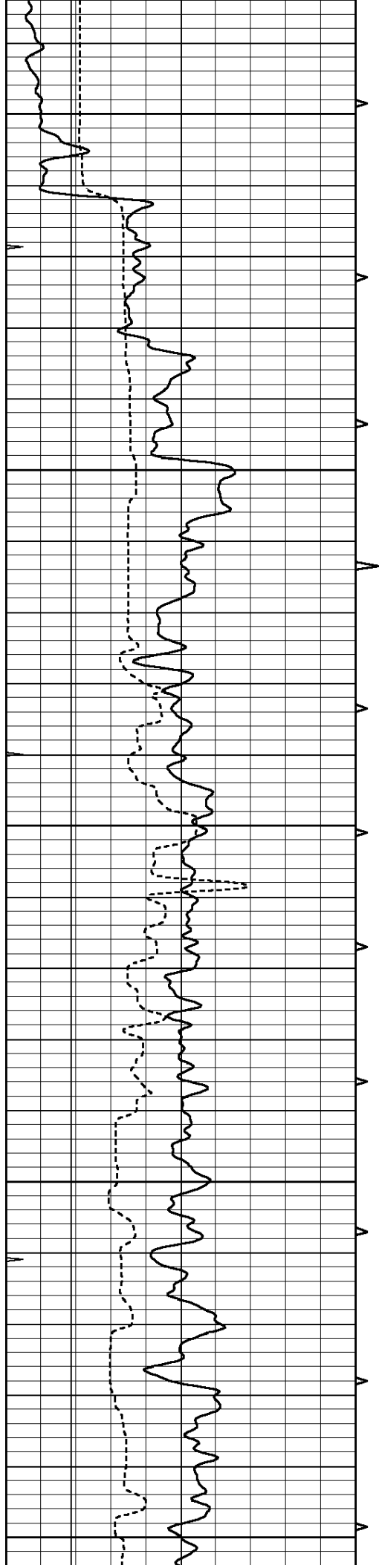


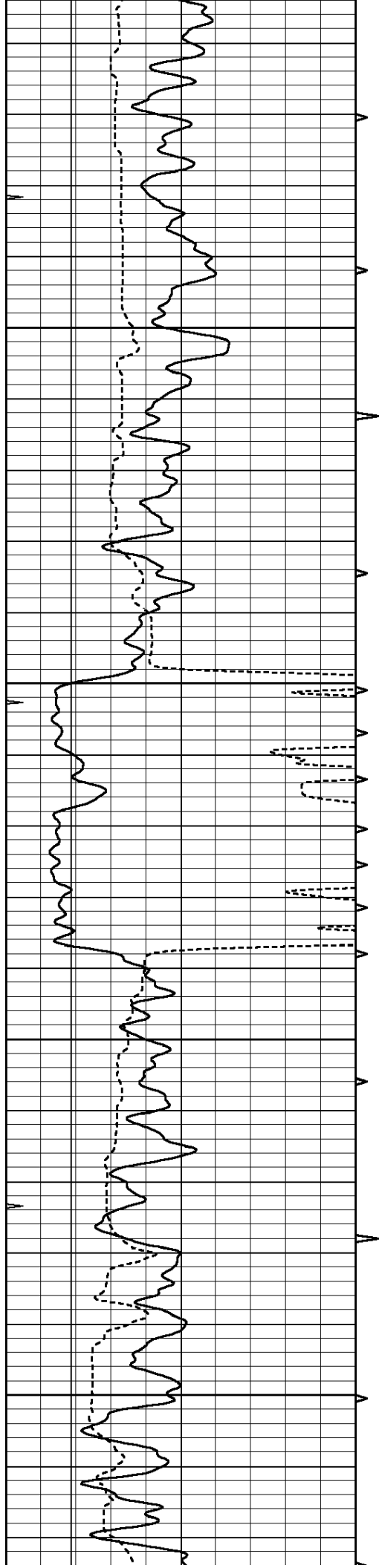










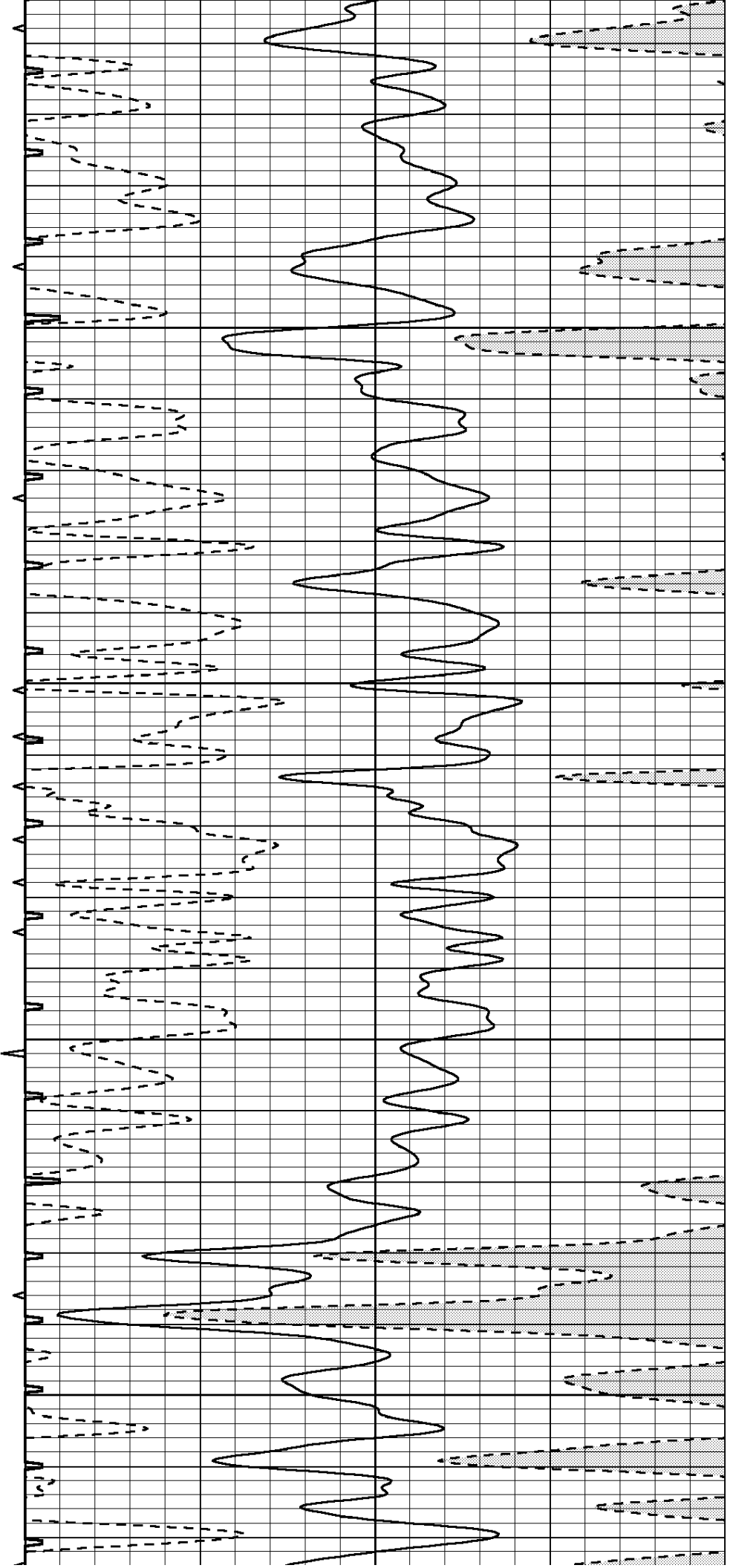


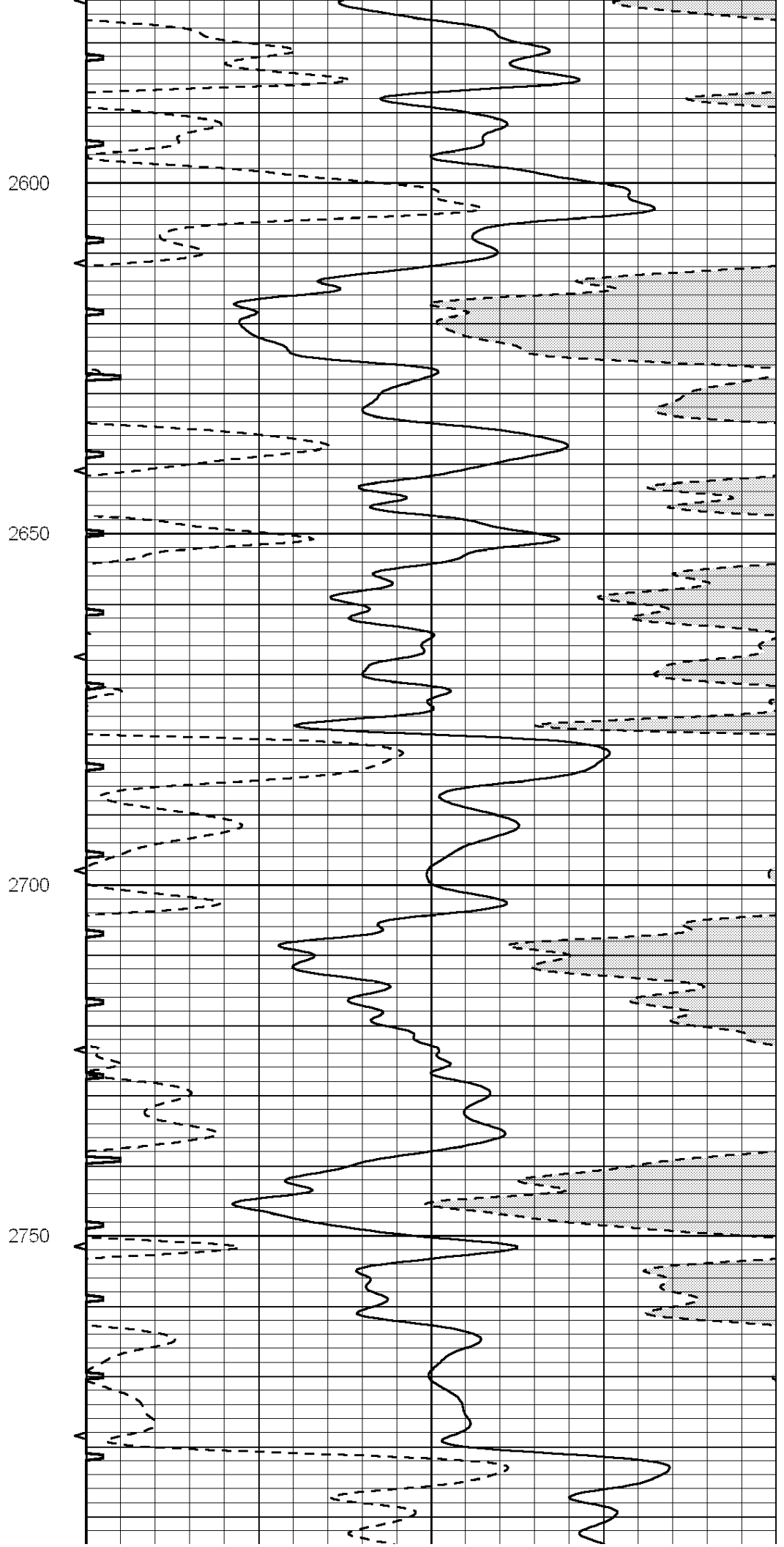
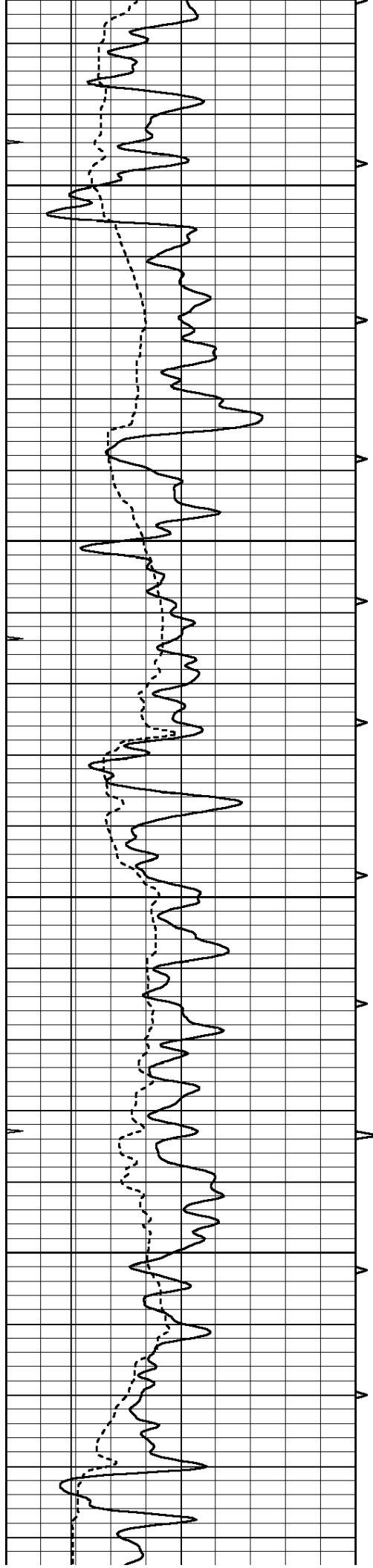
2400

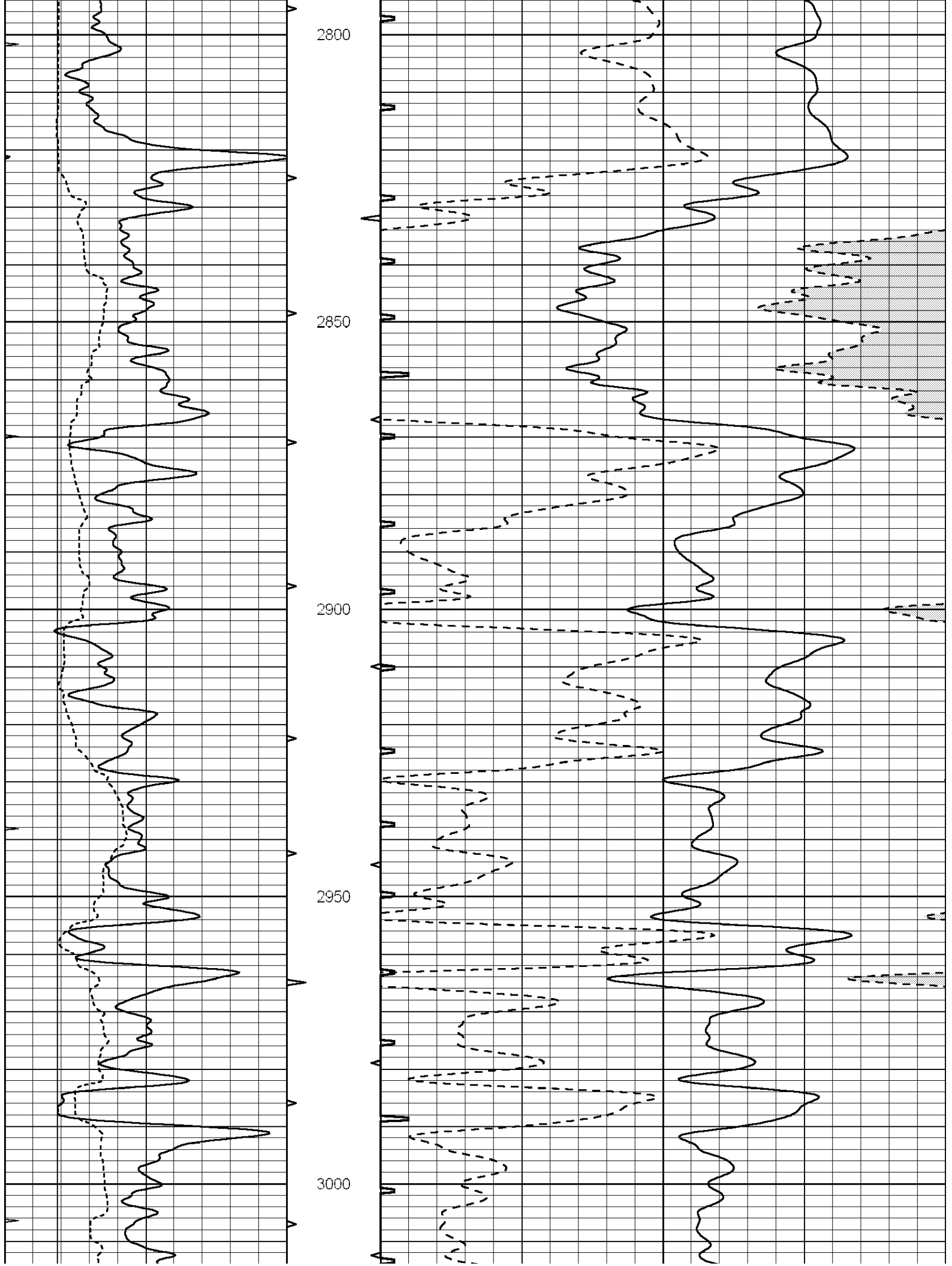
2450

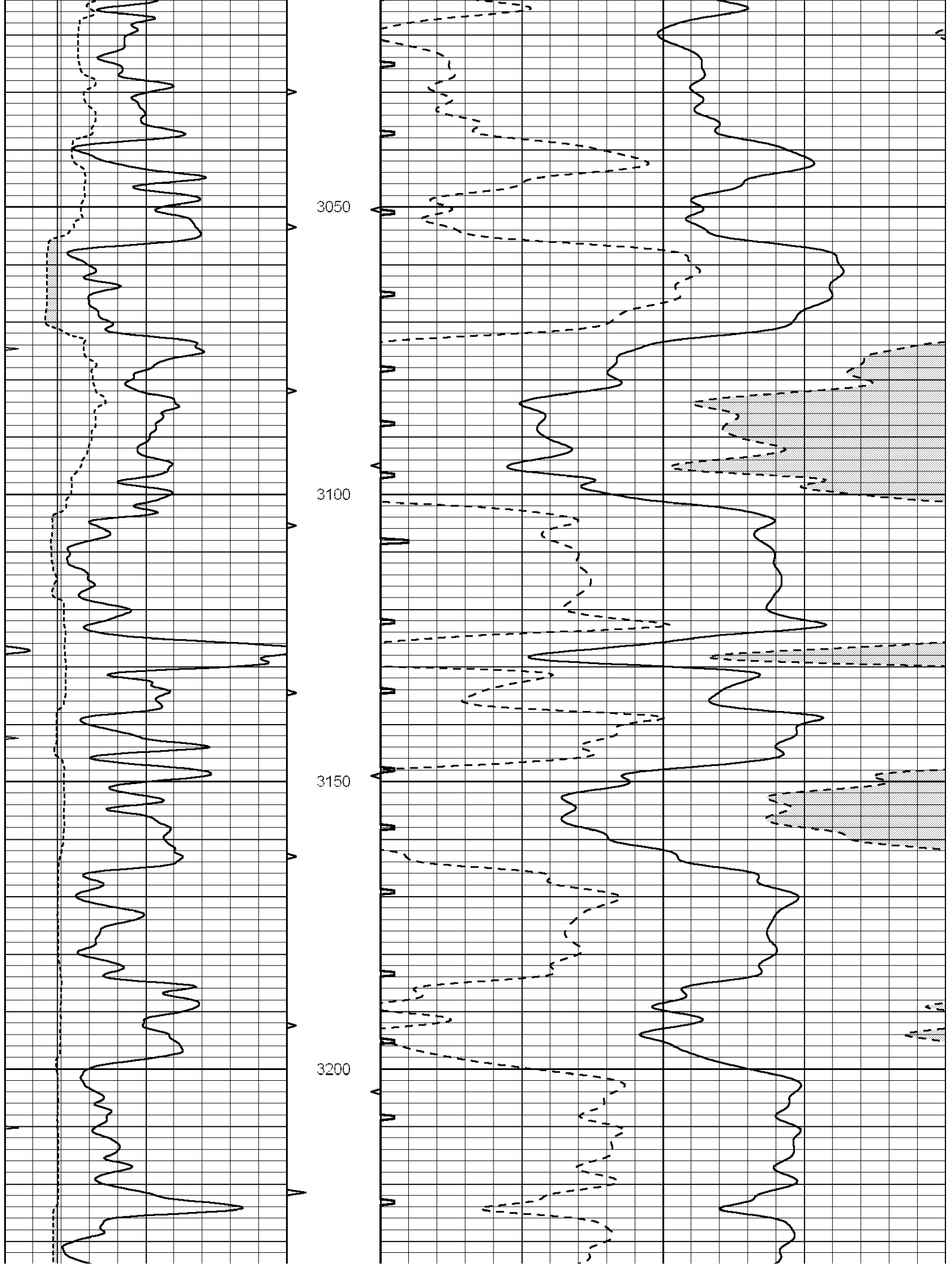
2500

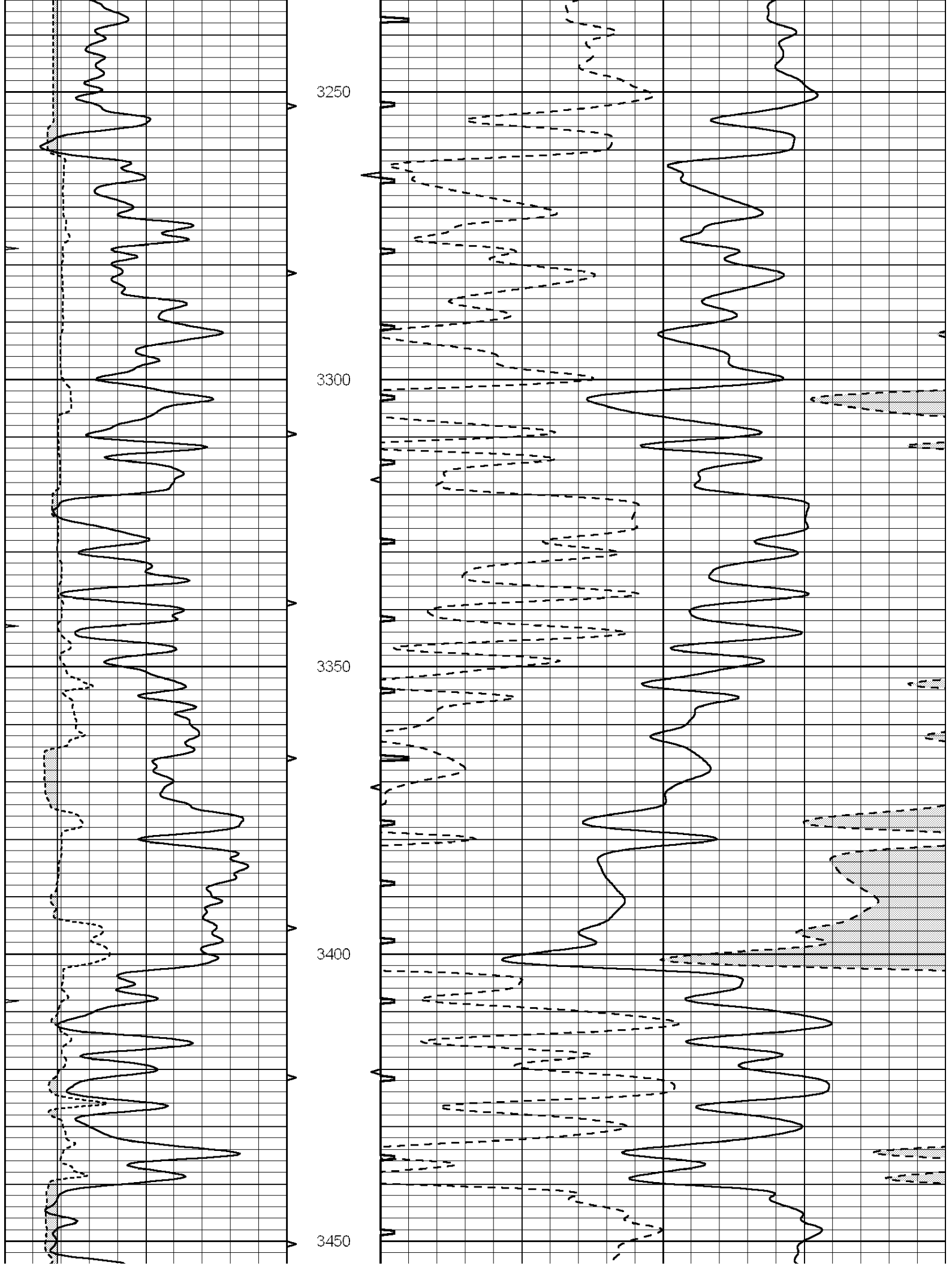
2550

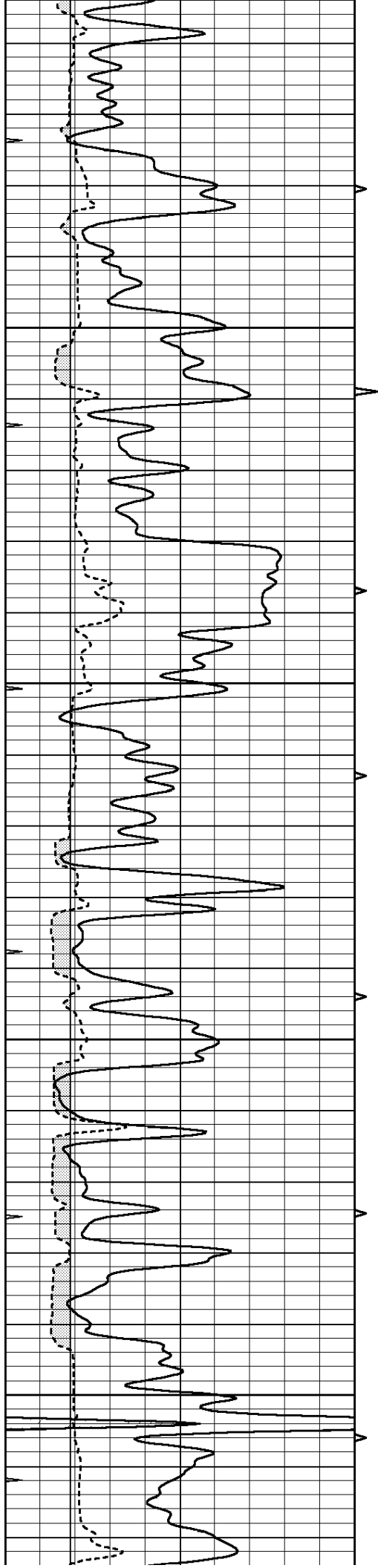










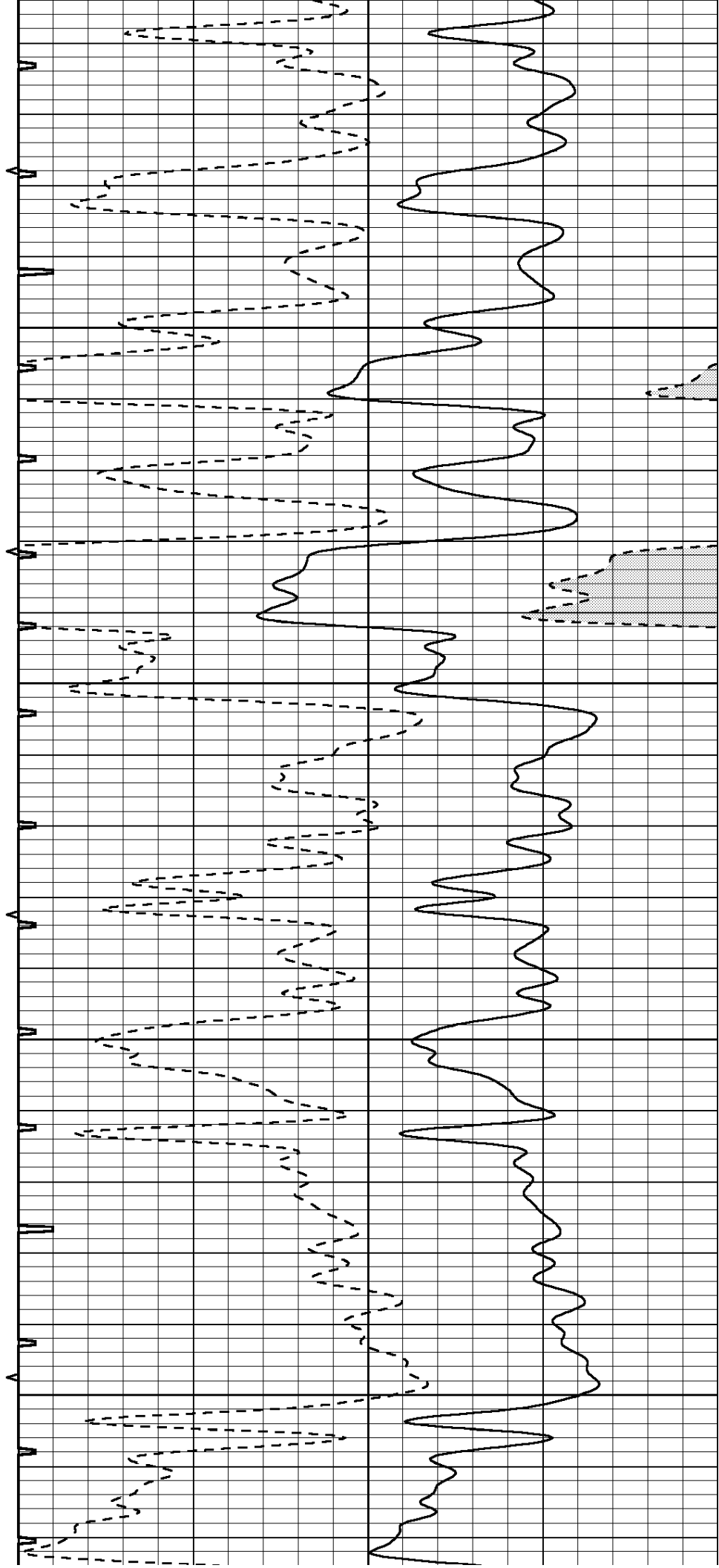


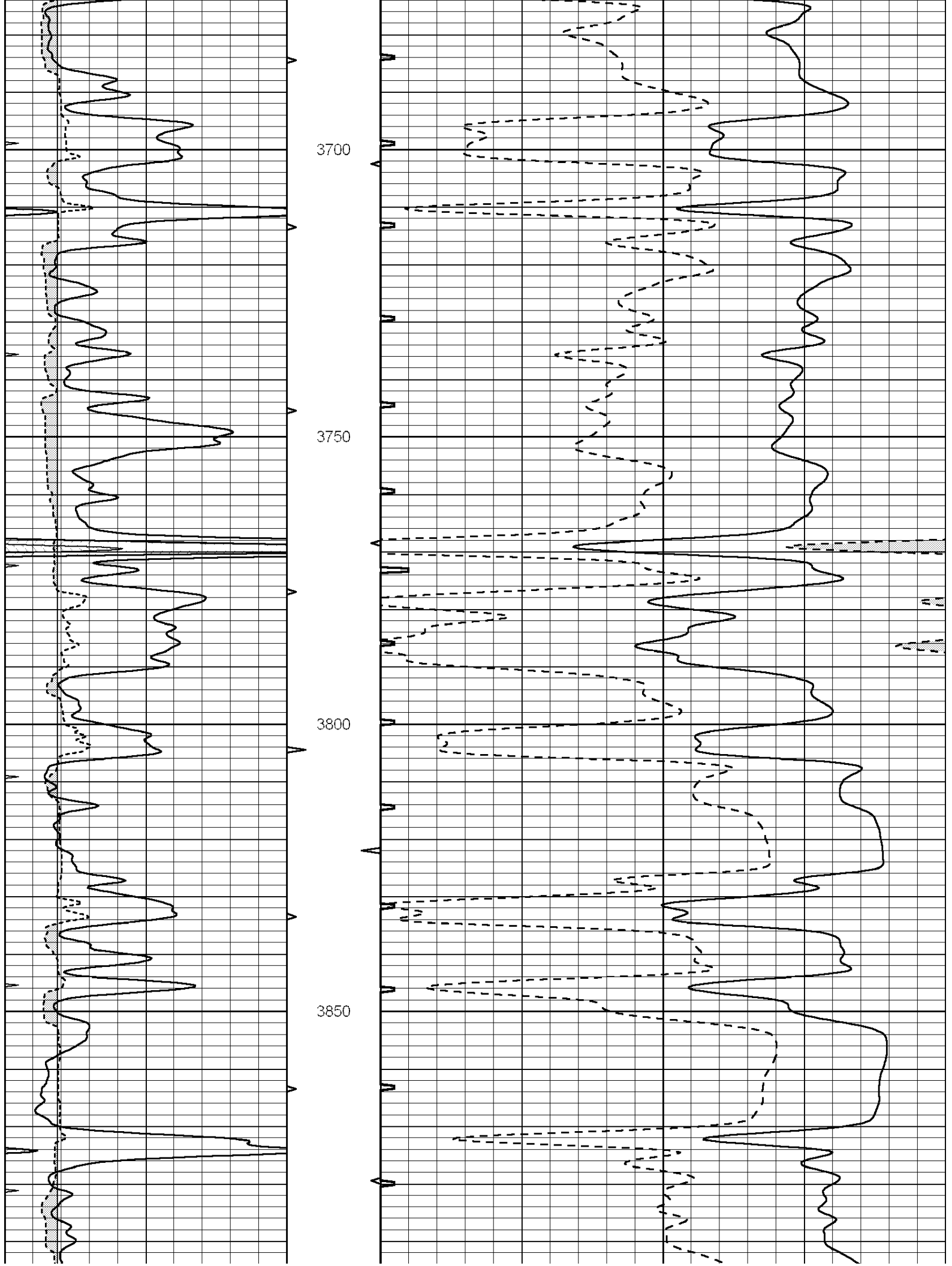
3500

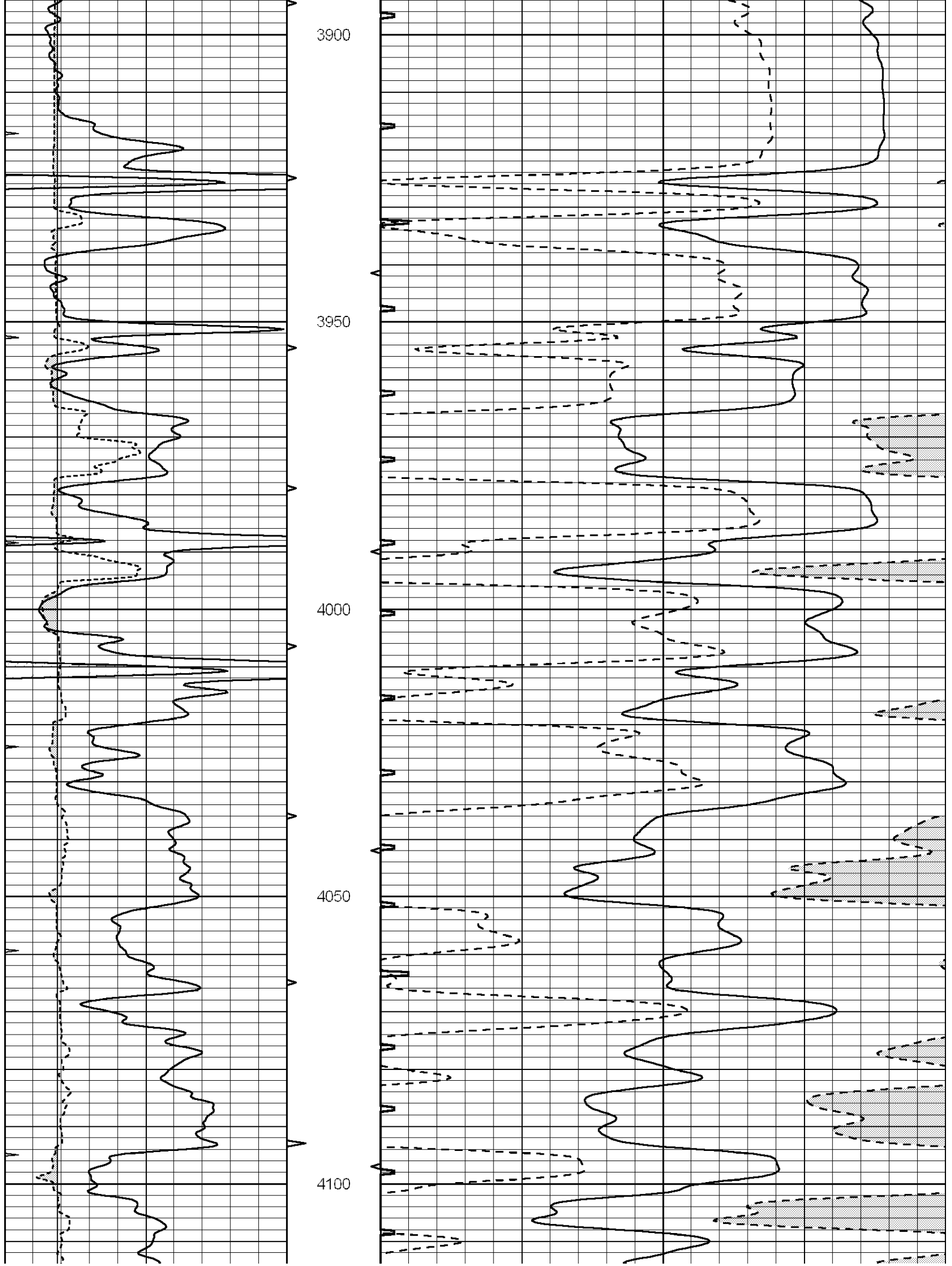
3550

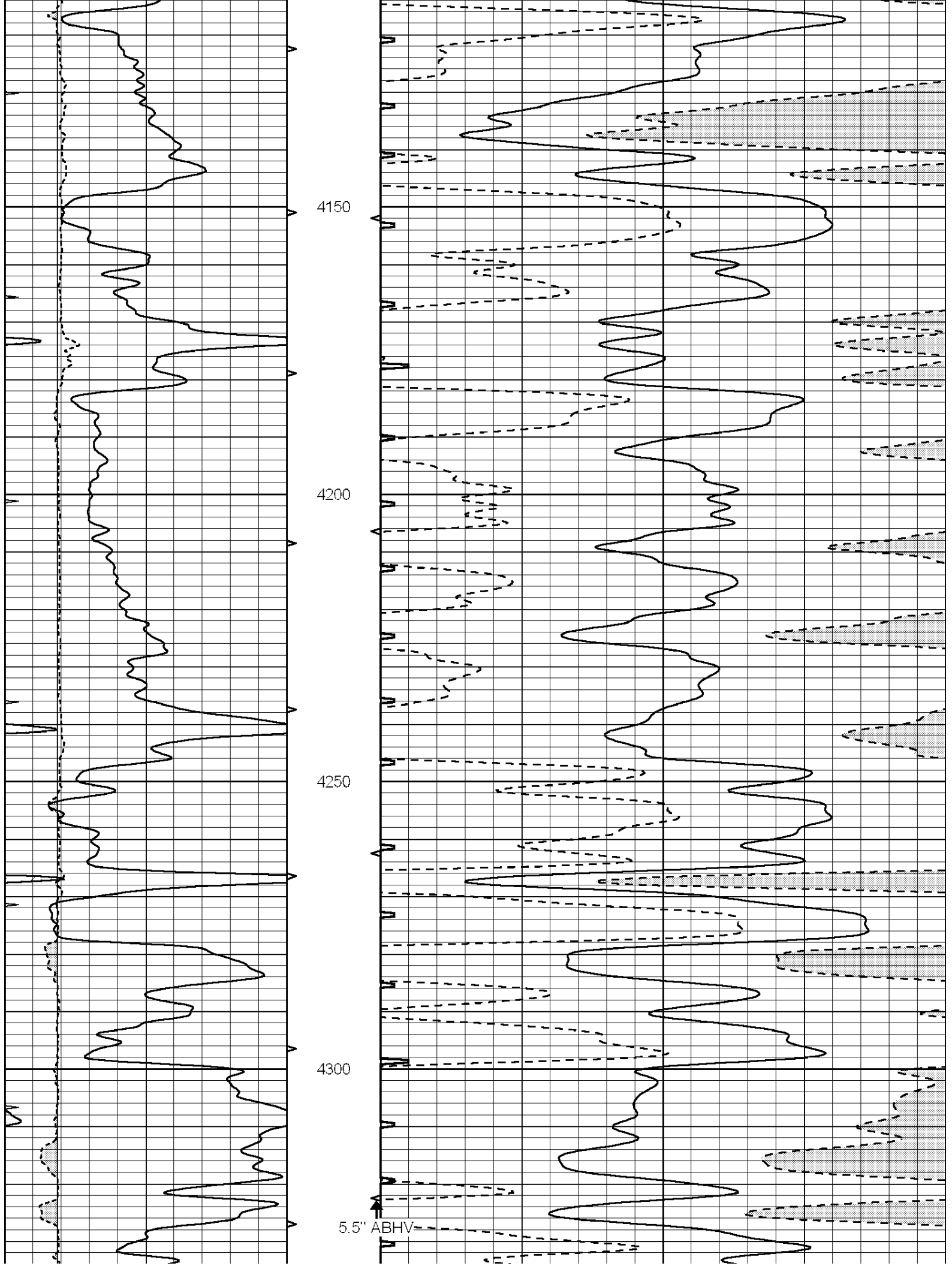
3600

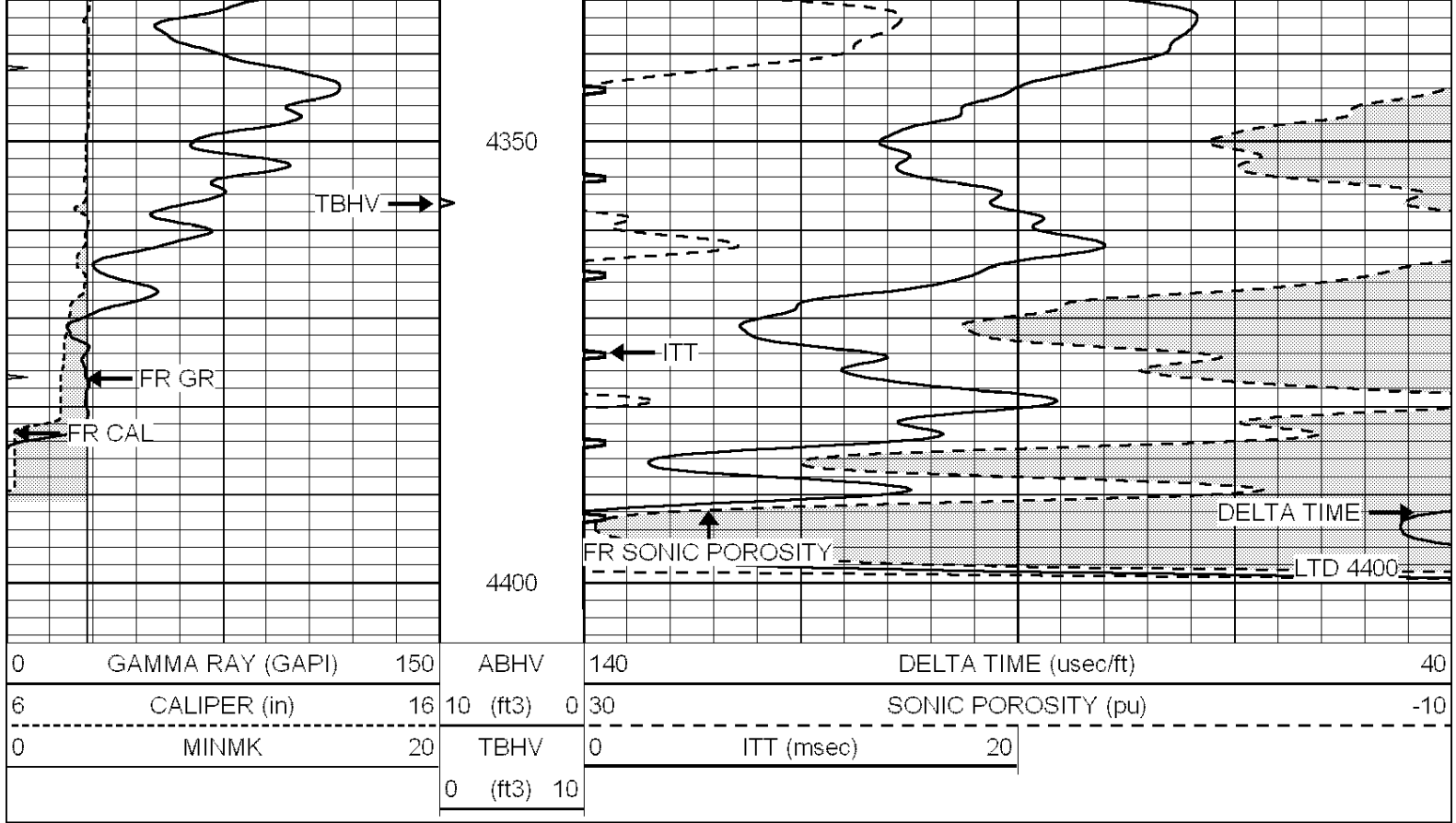
3650







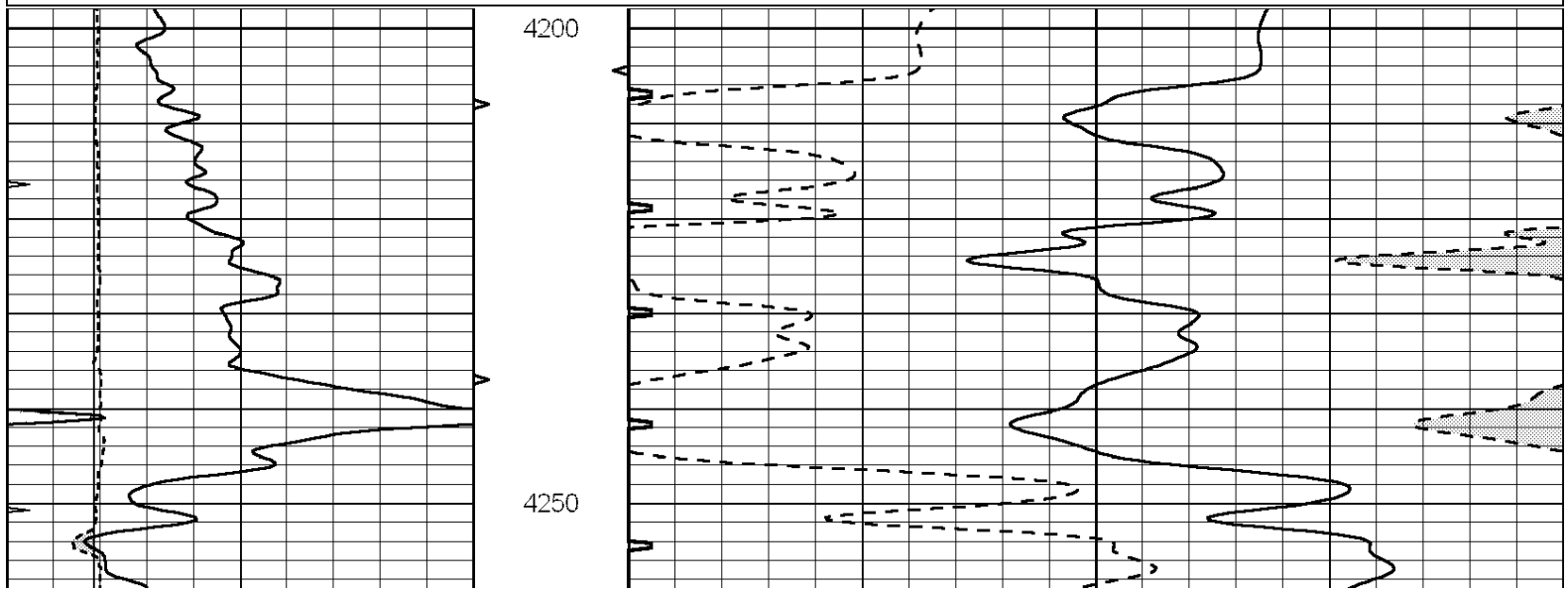


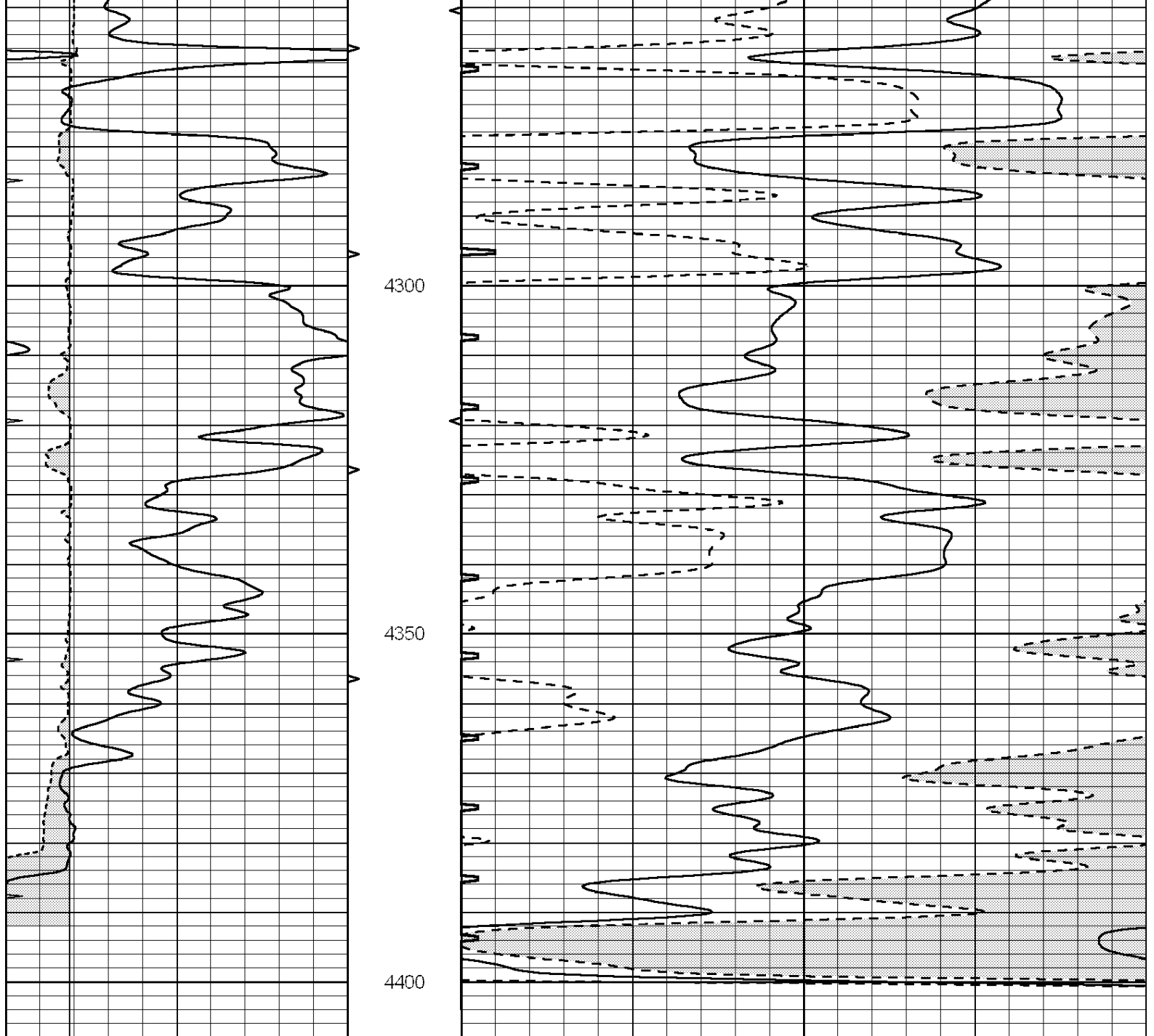


REPEAT SECTION

Database File: 26634ddn.db
 Dataset Pathname: pass5.1
 Presentation Format: slt
 Dataset Creation: Tue Aug 25 11:26:05 2015 by Calc SOC 120430
 Charted by: Depth in Feet scaled 1:240

0	GAMMA RAY (GAPI)	150	ABHV	140	DELTA TIME (usec/ft)	40	
6	CALIPER (in)	16	10 (ft3)	0	30	SONIC POROSITY (pu)	-10
0	MINMK	20	TBHV	0	ITT (msec)	20	
			0 (ft3)	10			





0	GAMMA RAY (GAPI)	150	ABHV	140	DELTA TIME (usec/ft)	40
6	CALIPER (in)	16	10 (ft3)	0 30	SONIC POROSITY (pu)	-10
0	MINMK	20	TBHV	0	ITT (msec)	20
			0 (ft3)	10		