



**COMPLETION  
& PRODUCTION  
SERVICES CO.**

**MICRO  
LOG**

Company DOLOMITE RESOURCES CORP.  
Well RIEDEL #33-1  
Field WILDCAT  
County GRAHAM  
State KANSAS

Company DOLOMITE RESOURCES CORPORATION  
Well RIEDEL #33-1  
Field WILDCAT  
County GRAHAM State KANSAS

Location: API # : 15-065-24106-0000  
2970' FSL & 1123' FWL  
E/2 - SE - SW - NW  
SEC 33 TWP 10S RGE 25W  
Permanent Datum GROUND LEVEL Elevation 2478  
Log Measured From KELLY BUSHING 8' A.G.L.  
Drilling Measured From KELLY BUSHING  
Other Services  
CDL/CNL  
DIL/SON  
Elevation  
K.B. 2486  
D.F. 2484  
G.L. 2478

Date	8/25/15
Run Number	TWO
Depth Driller	4400
Depth Logger	4400
Bottom Logged Interval	4384
Top Log Interval	3500
Casing Driller	8 5/8" @ 218'
Casing Logger	218
Bit Size	7 7/8"
Type Fluid in Hole	CHEMICAL MUD
Density / Viscosity	9.2/55
pH / Fluid Loss	10.0/8.0
Source of Sample	FLOWLINE
Rim @ Meas. Temp	.650 @ 90F
Rmf @ Meas. Temp	.488 @ 90F
Rmc @ Meas. Temp	.780 @ 90F
Source of Rmf / Rmc	MEASUREMENT
Rim @ BHT	.488 @ 120F
Time Circulation Stopped	4.5 HOURS
Time Logger on Bottom	9:15 A.M.
Maximum Recorded Temperature	120F
Equipment Number	4854
Location	HAYS, KANSAS
Recorded By	JEFF LUEBBERS
Witnessed By	TOM PRONOLD

<<< Fold Here >>>

All interpretations are opinions based on inferences from electrical or other measurements and we cannot and do not guarantee the accuracy or correctness of any interpretation, and we shall not, except in the case of gross or willful negligence on our part, be liable or responsible for any loss, costs, damages, or expenses incurred or sustained by anyone resulting from any interpretation made by any of our officers, agents or employees. These interpretations are also subject to our general terms and conditions set out in our current Price Schedule.

**Comments**

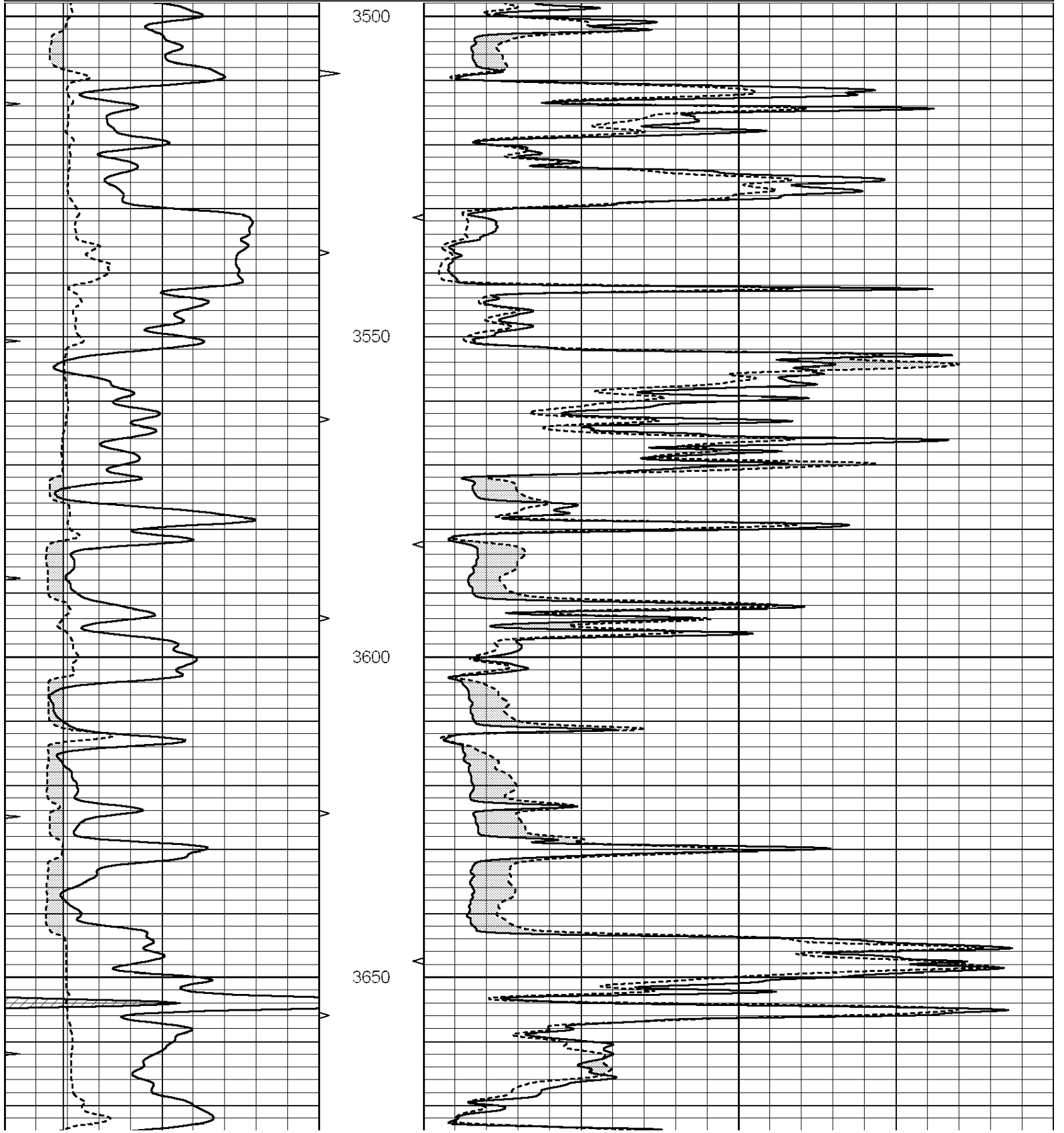
THANK YOU FOR USING "NABORS" HAYS, KANSAS (785) 628-6395  
DIRECTIONS  
COLLYER, KS. & I-70, 1/2N. TO STOP SIGN, E. TO "140 RD.", (ST. PETER RD.) 7N. TO "A RD.", 3W. AT  
CURVE, 1/2N., E. INTO

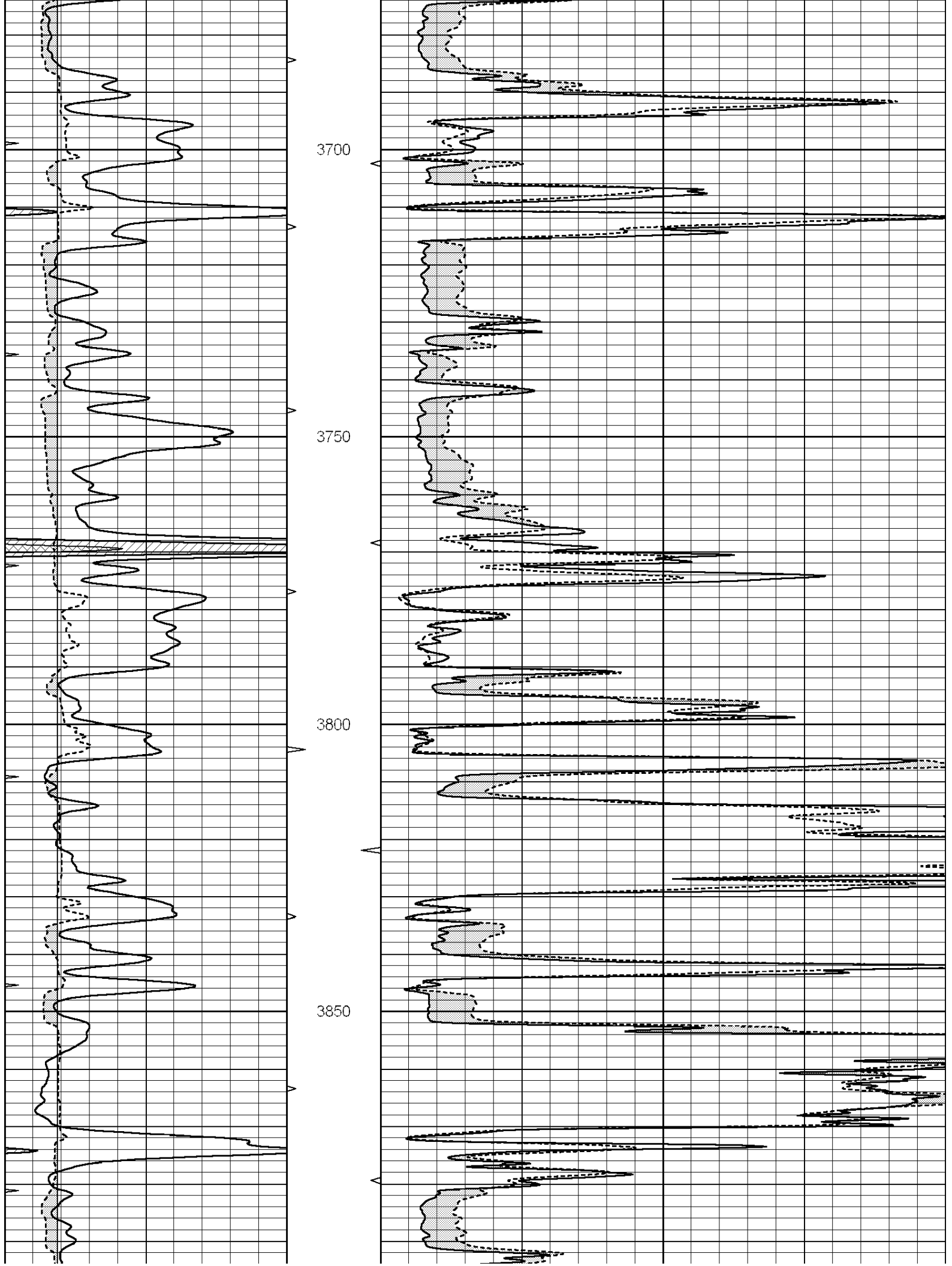


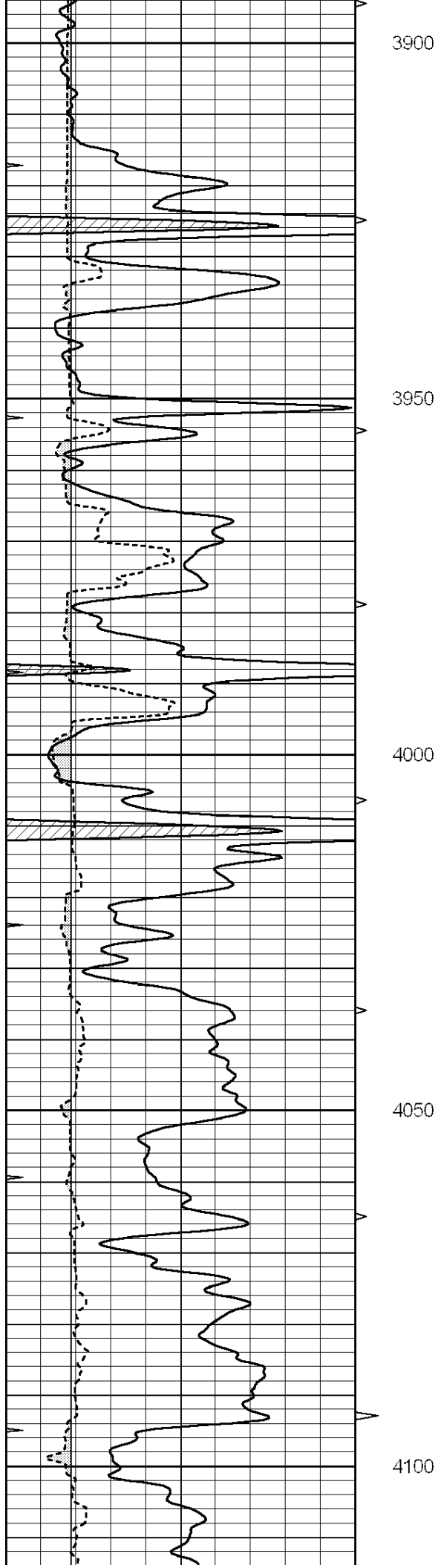
**MAIN SECTION**

Database File: 26634ddn.db  
 Dataset Pathname: pass6.1  
 Presentation Format: micro  
 Dataset Creation: Tue Aug 25 11:56:50 2015 by Calc SOC 120430  
 Charted by: Depth in Feet scaled 1:240

0	GAMMA RAY (GAPI)	150	ABHV	0	MEL1.5 (Ohm-m)	40
6	CALIPER (in)	16	10 (ft3)	0	MEL 20 (Ohm-m)	40
0	MINMK	20	TBHV			
			0 (ft3)	10		







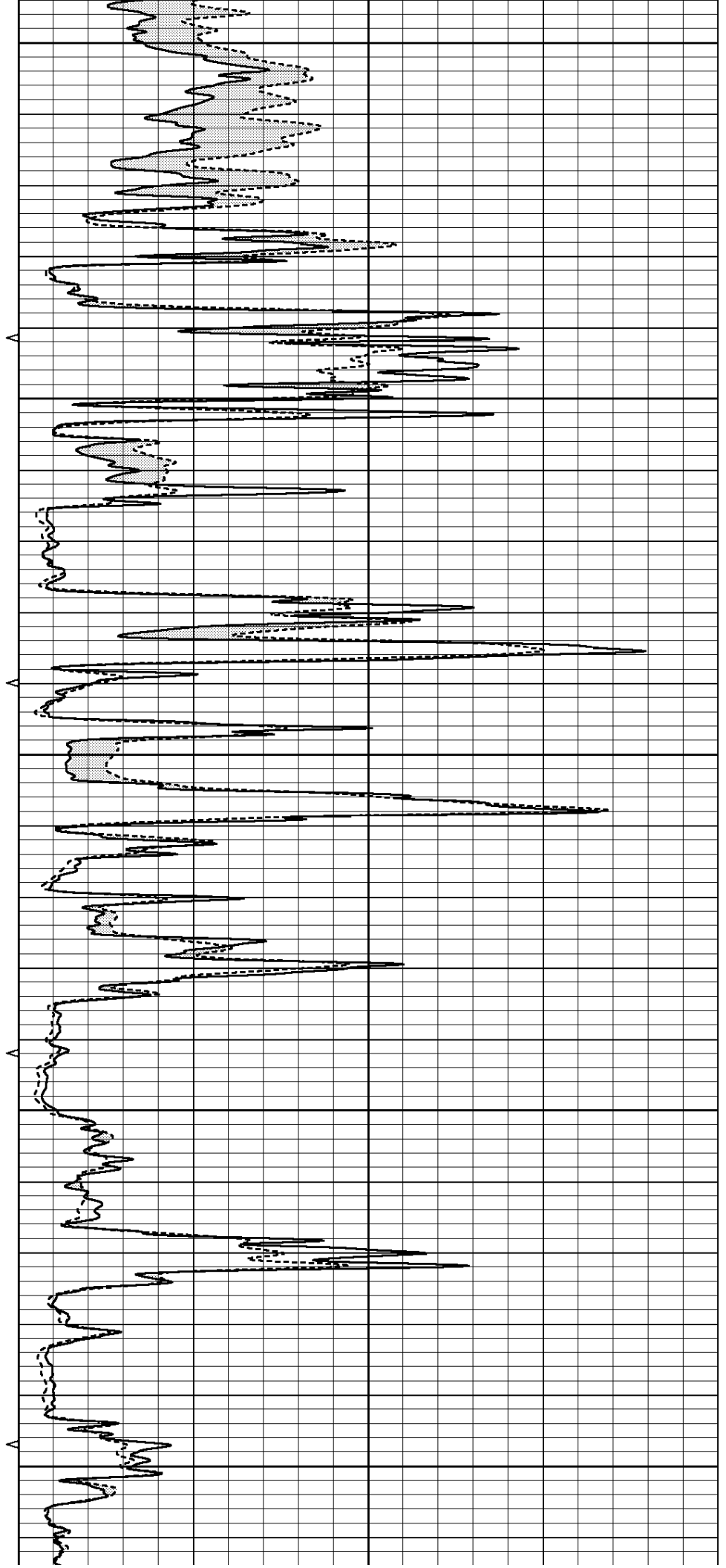
3900

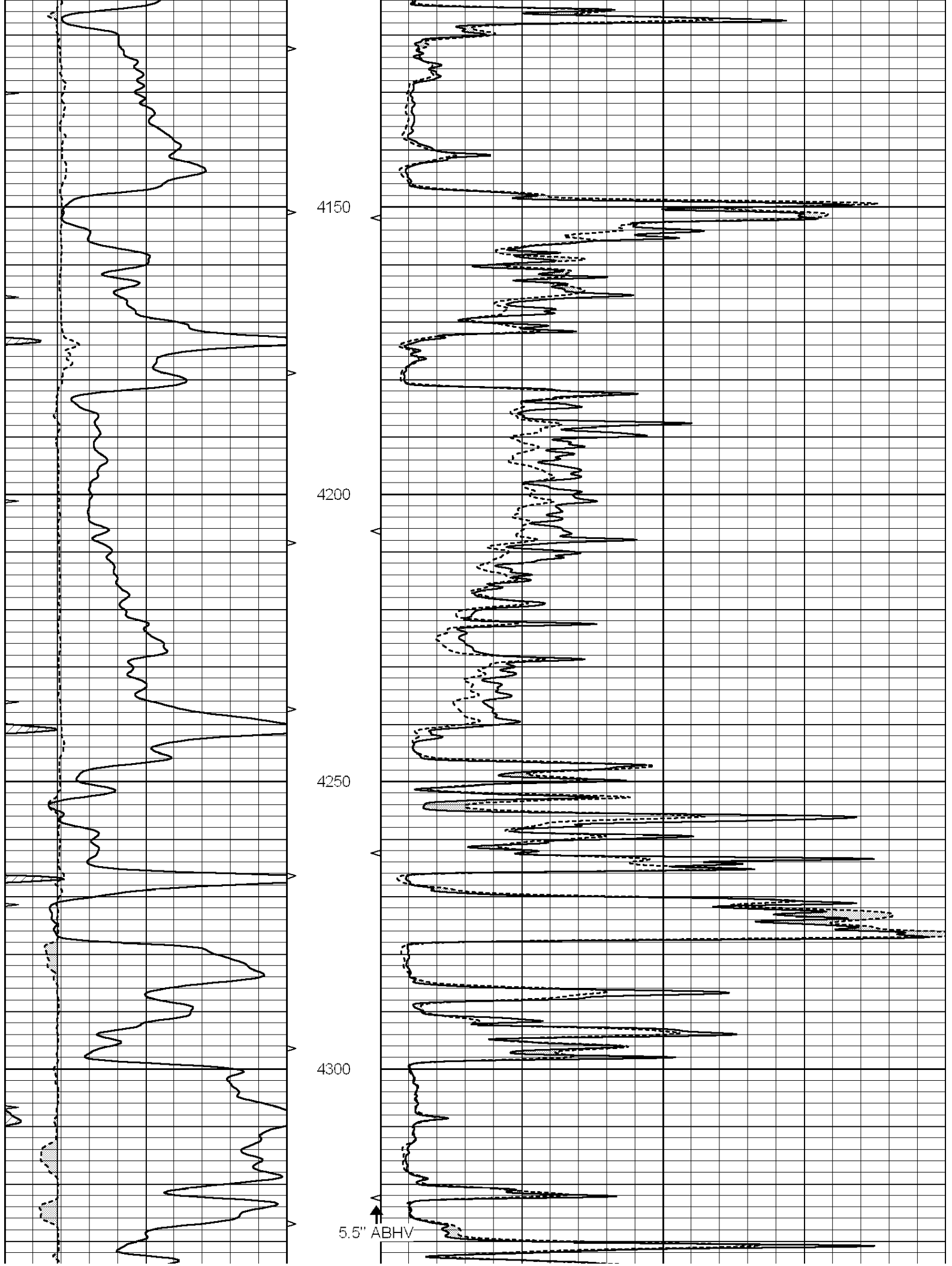
3950

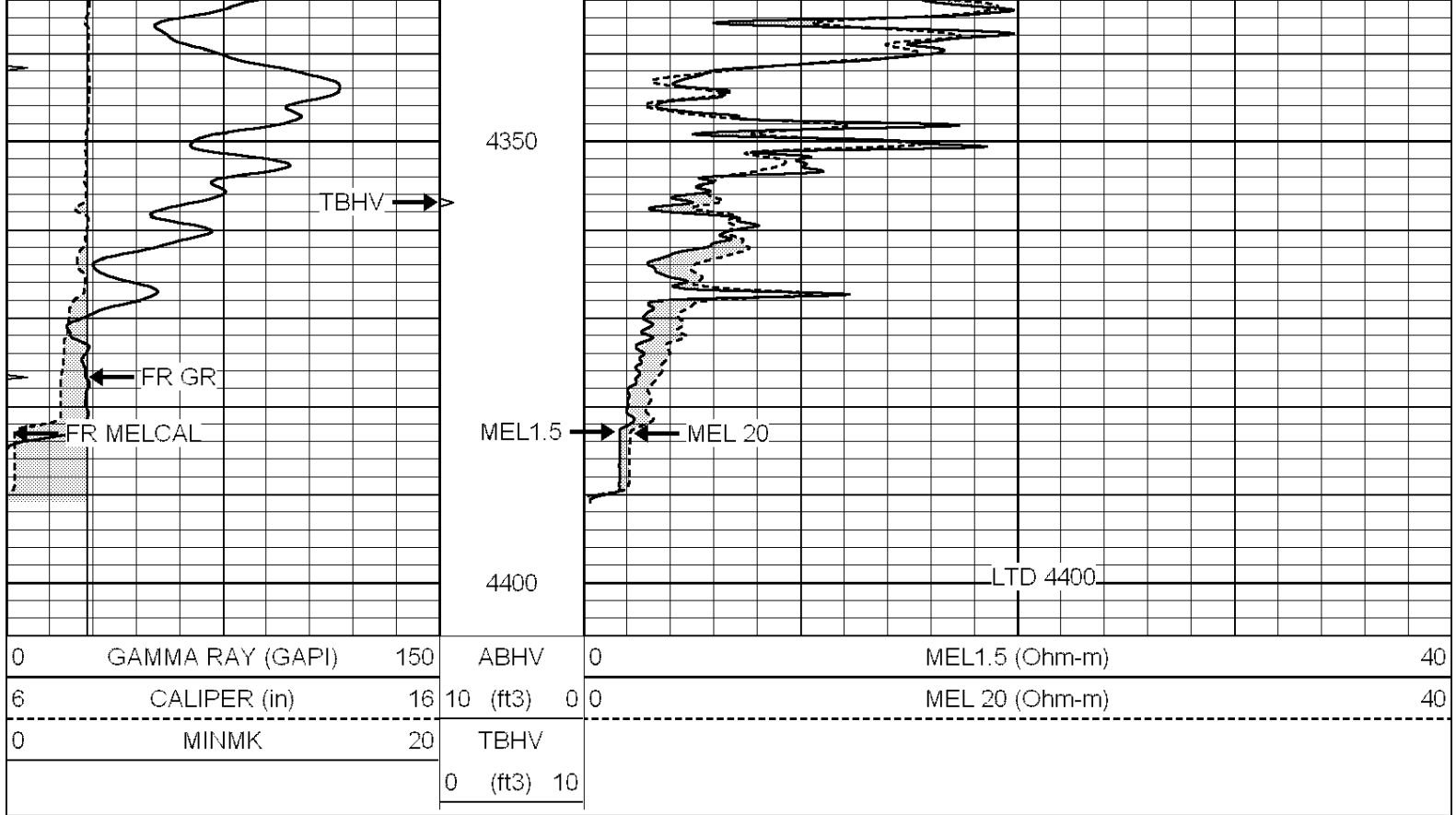
4000

4050

4100





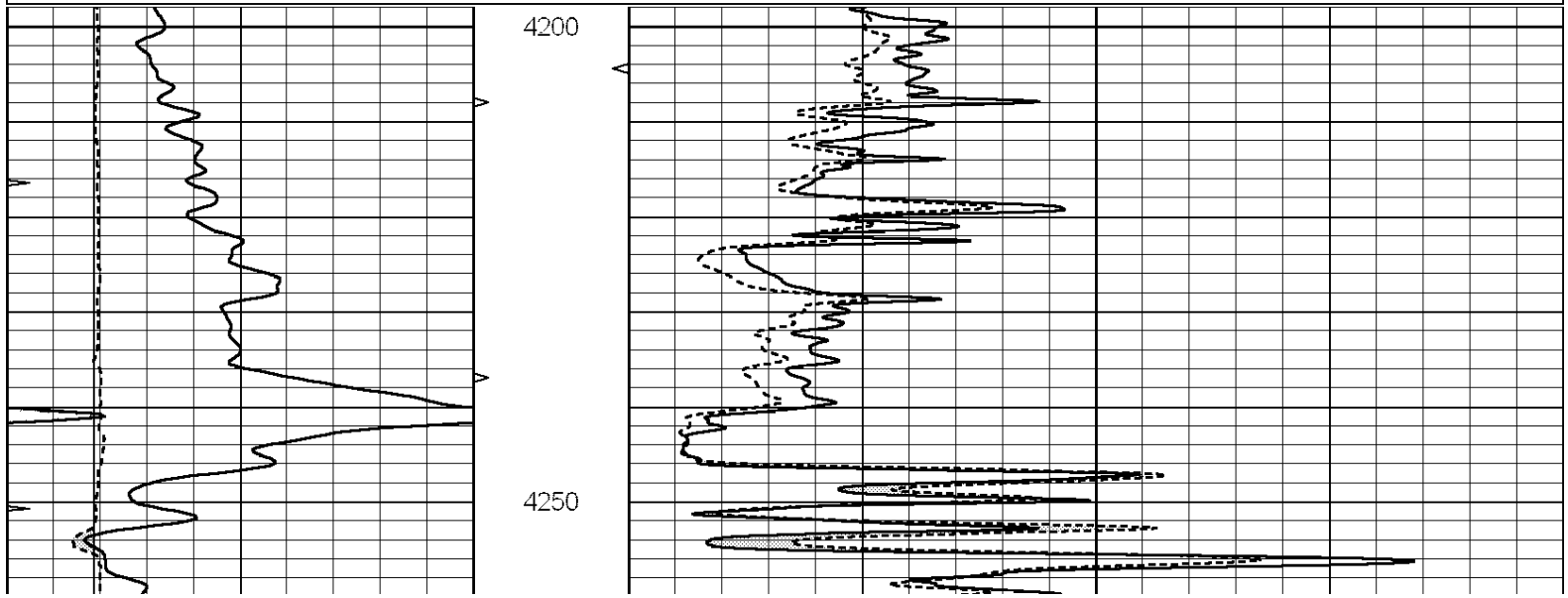


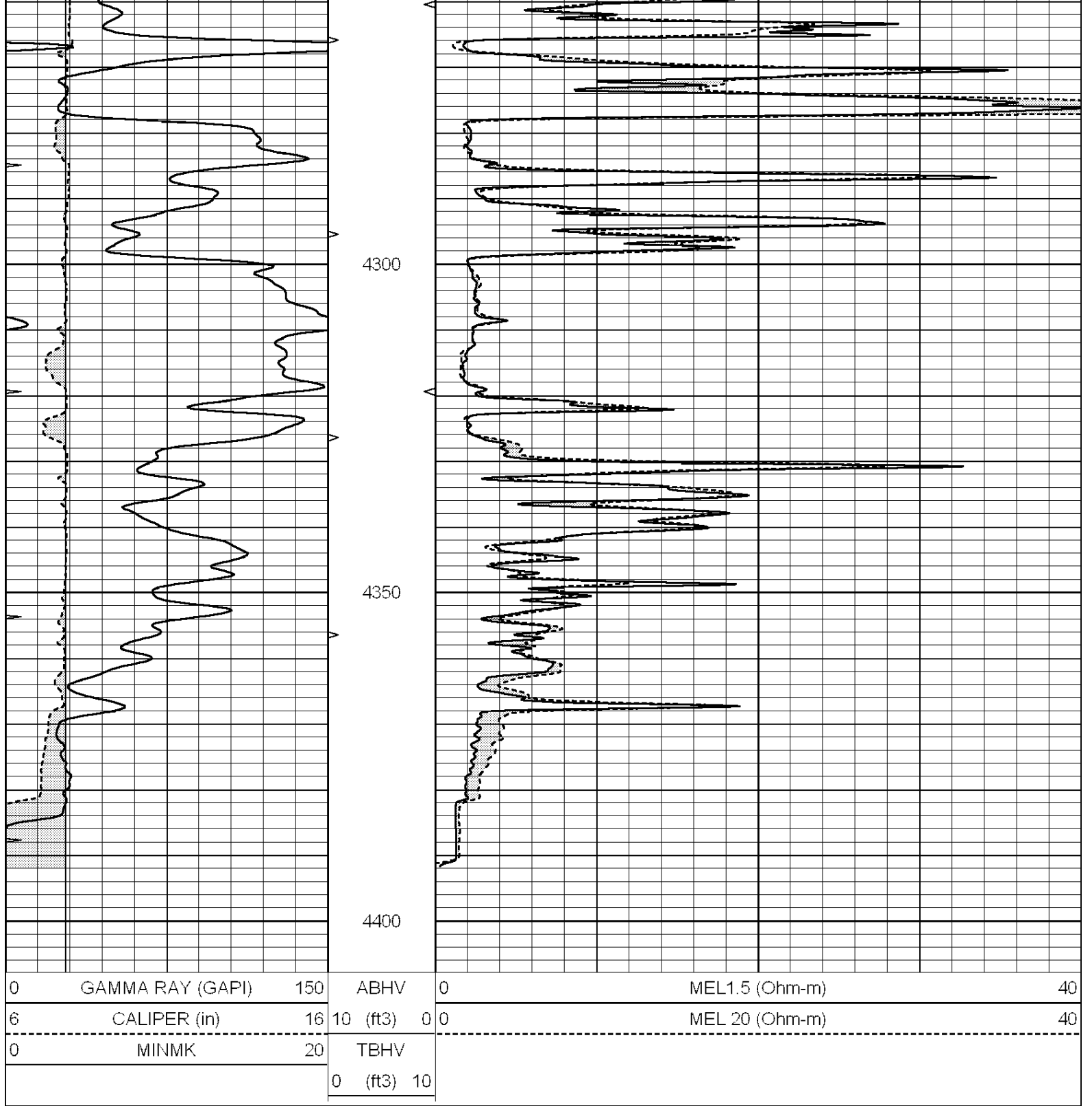
**NABORS**  
**COMPLETION**  
**& PRODUCTION**  
**SERVICES CO.**

# REPEAT SECTION

Database File: 26634ddn.db  
 Dataset Pathname: pass5.1  
 Presentation Format: micro  
 Dataset Creation: Tue Aug 25 11:26:05 2015 by Calc SOC 120430  
 Charted by: Depth in Feet scaled 1:240

0	GAMMA RAY (GAPI)	150	ABHV	0	MEL1.5 (Ohm-m)	40
6	CALIPER (in)	16	10 (ft3)	0 0	MEL 20 (Ohm-m)	40
0	MINMK	20	TBHV			
			0 (ft3)	10		





Calibration Report

Database File: 26634ddn.db  
 Dataset Pathname: pass6.1  
 Dataset Creation: Tue Aug 25 11:56:50 2015 by Calc SOC 120430

MICRO Calibration Report

Serial Number: 070911  
 Tool Model: ProbeN  
 Performed: Wed Jul 08 06:42:15 2015

Caliper Calibration: Gain=3.786      Offset=2.857  
 Low Cal      High Cal

References	7.400	18.000
Readings	1.200	4.000
1.5" Calibration:	Gain=25.000	Offset=0.300
	Low Cal	High Cal
References	0.000	20.000
Readings	0.001	1.240
2" Calibration:	Gain=50.000	Offset=-1.000
	Low Cal	High Cal
References	0.000	20.000
Readings	0.001	1.076
Gamma Ray Calibration Report		
Serial Number:	110959	
Tool Model:	OPEN_GR	
Performed:	Fri Jan 30 20:46:14 2015	
Calibrator Value:	1.0	GAPI
Background Reading:	0.0	cps
Calibrator Reading:	1.0	cps
Sensitivity:	0.2000	GAPI/cps