



**COMPLETION  
& PRODUCTION  
SERVICES CO.**

**DUAL INDUCTION  
LOG**

Company DOLOMITE RESOURCES CORP.  
Well RIEDEL #33-1  
Field WILDCAT  
County GRAHAM  
State KANSAS

Company DOLOMITE RESOURCES CORPORATION  
Well RIEDEL #33-1  
Field WILDCAT  
County GRAHAM State KANSAS

Location: API # : 15-065-24106-0000  
2970' FSL & 1123' FWL  
E/2 - SE - SW - NW  
SEC 33 TWP 10S RGE 25W

Permanent Datum GROUND LEVEL Elevation 2478  
Log Measured From KELLY BUSHING 8' A.G.L.  
Drilling Measured From KELLY BUSHING

Other Services  
CDL/CNL  
MEL/SON  
Elevation  
K.B. 2486  
D.F. 2484  
G.L. 2478

Date	8/25/75
Run Number	ONE
Depth Driller	4400
Depth Logger	4400
Bottom Logged Interval	4398
Top Log Interval	00
Casing Driller	8 5/8"@218'
Casing Logger	218
Bit Size	7 7/8"
Type Fluid in Hole	CHEMICAL MUD
Density / Viscosity	9.2/55
pH / Fluid Loss	10.0/8.0
Source of Sample	FLOWLINE
Rim @ Meas. Temp	.650@90F
Rmf @ Meas. Temp	.488@90F
Rmc @ Meas. Temp	.780@90F
Source of Rmf / Rmc	MEASUREMENT
Rim @ BHT	.488@120F
Time Circulation Stopped	2.5 HOURS
Time Logger on Bottom	9:15 A.M.
Maximum Recorded Temperature	120F
Equipment Number	4854
Location	HAYS, KANSAS
Recorded By	JEFF LUEBBERS
Witnessed By	TOM PRONOLD

<<< Fold Here >>>

All interpretations are opinions based on inferences from electrical or other measurements and we cannot and do not guarantee the accuracy or correctness of any interpretation, and we shall not, except in the case of gross or willful negligence on our part, be liable or responsible for any loss, costs, damages, or expenses incurred or sustained by anyone resulting from any interpretation made by any of our officers, agents or employees. These interpretations are also subject to our general terms and conditions set out in our current Price Schedule.

**Comments**

THANK YOU FOR USING "NABORS" HAYS, KANSAS (785) 628-6395  
DIRECTIONS  
COLLYER, KS. & I-70, 1/2N. TO STOP SIGN, E. TO "140 RD.",(ST. PETER RD.) 7N. TO "A RD.", 3W. AT  
CURVE, 1/2N., E. INTO



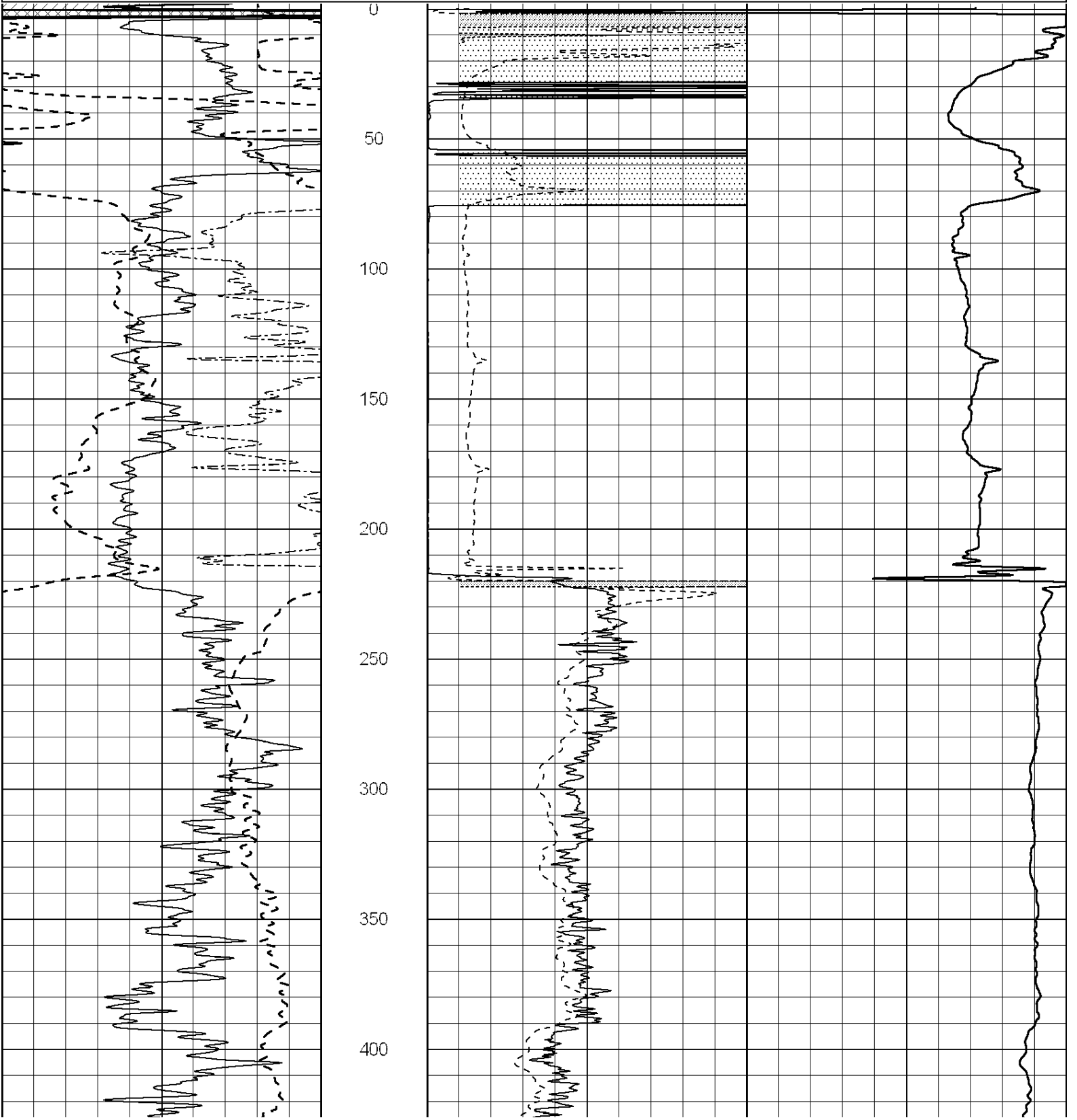
**MAIN SECTION**

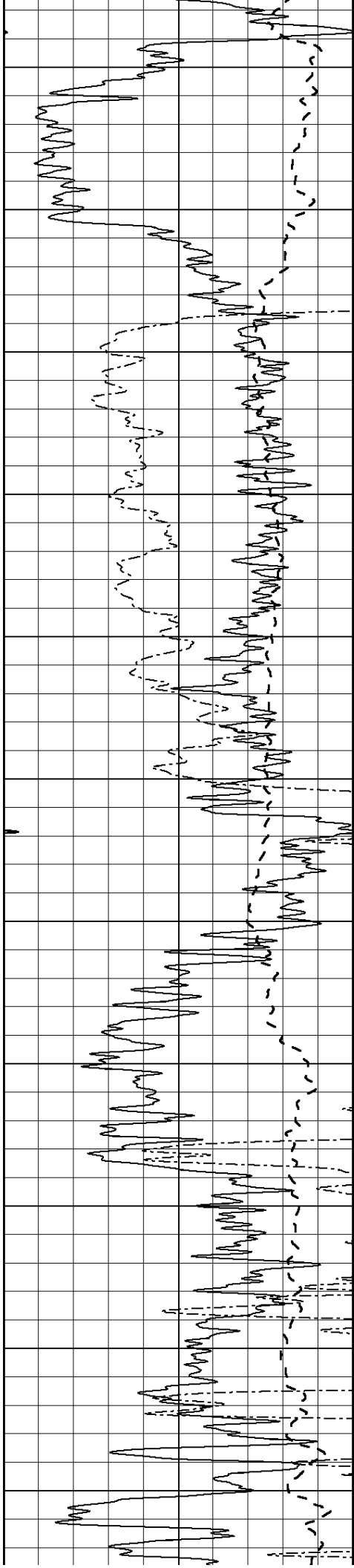
Database File: 26634ddn.db  
 Dataset Pathname: pass3.3  
 Presentation Format: dil2  
 Dataset Creation: Tue Aug 25 10:32:51 2015 by Calc SOC 120430  
 Charted by: Depth in Feet scaled 1:600

0	Gamma Ray (GAPI)	150
-100	SP (mV)	100
0	RWA (Ohm-m)	1

0	RLL3 (Ohm-m)	50
0	RILD (Ohm-m)	50
1000	CILD (mmho/m)	0

50	RILD X10 (Ohm-m)	500
50	RLL3 X10 (Ohm-m)	500





450

500

550

600

650

700

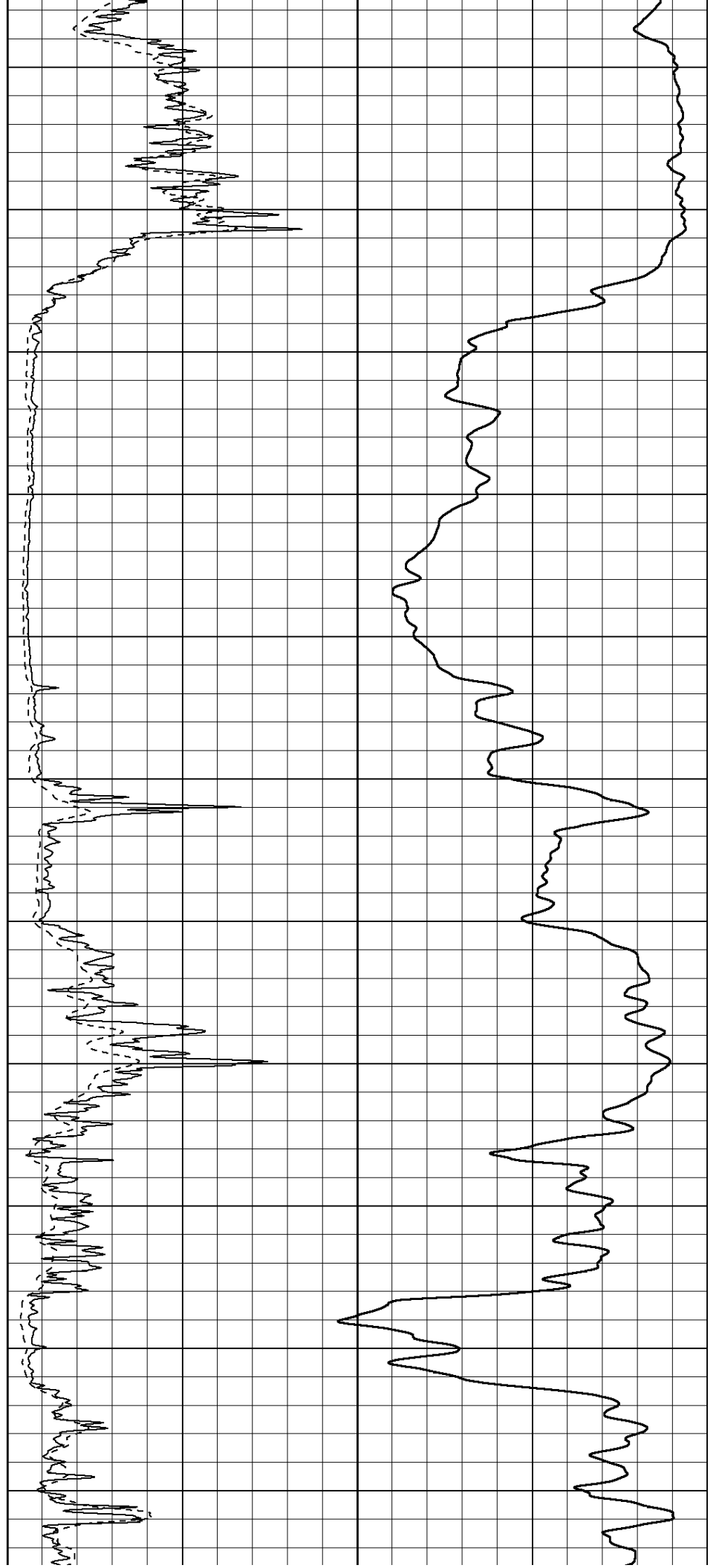
750

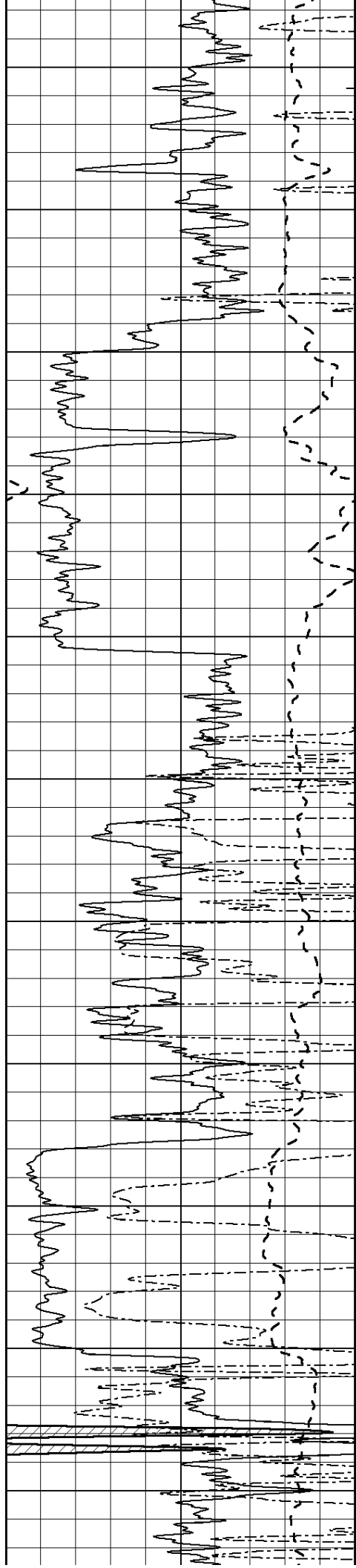
800

850

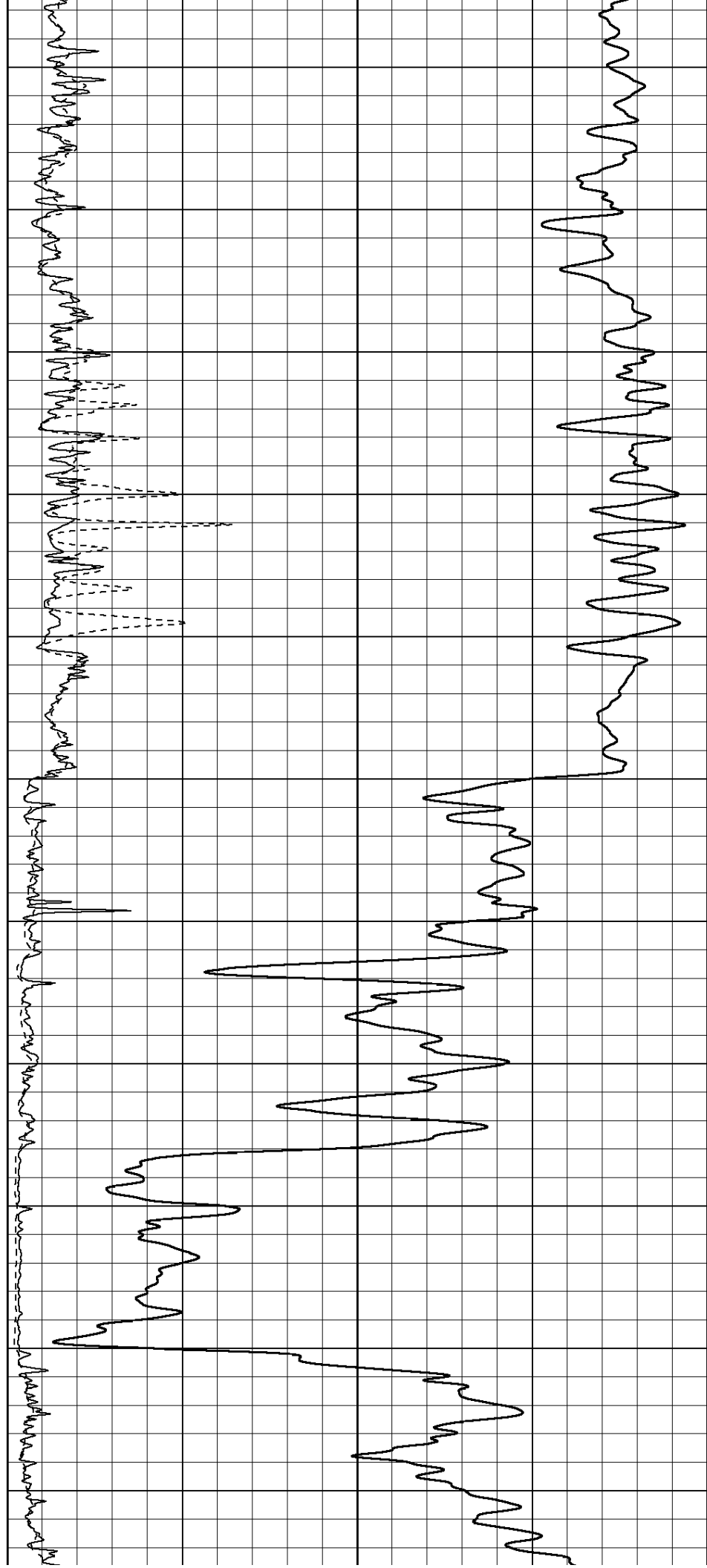
900

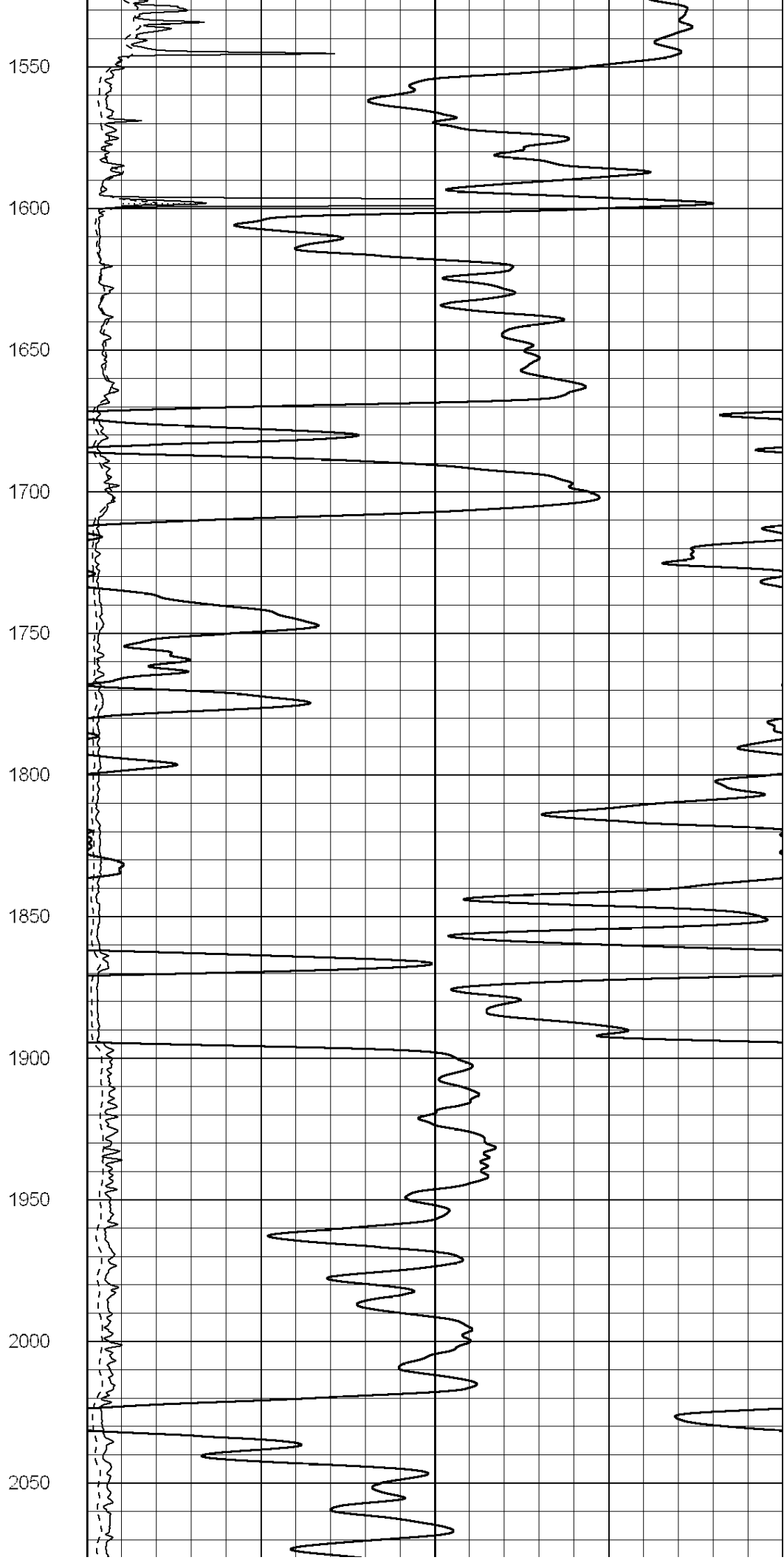
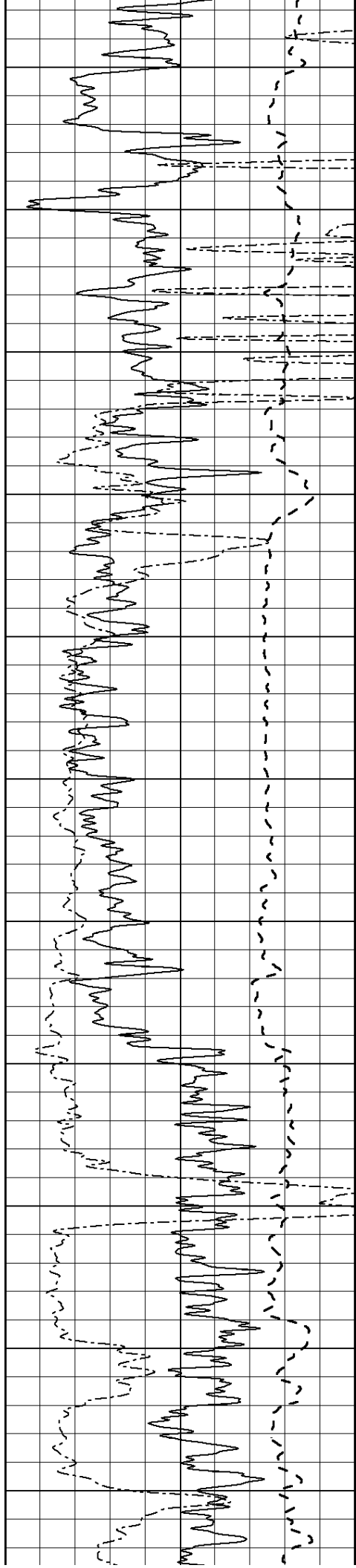
950

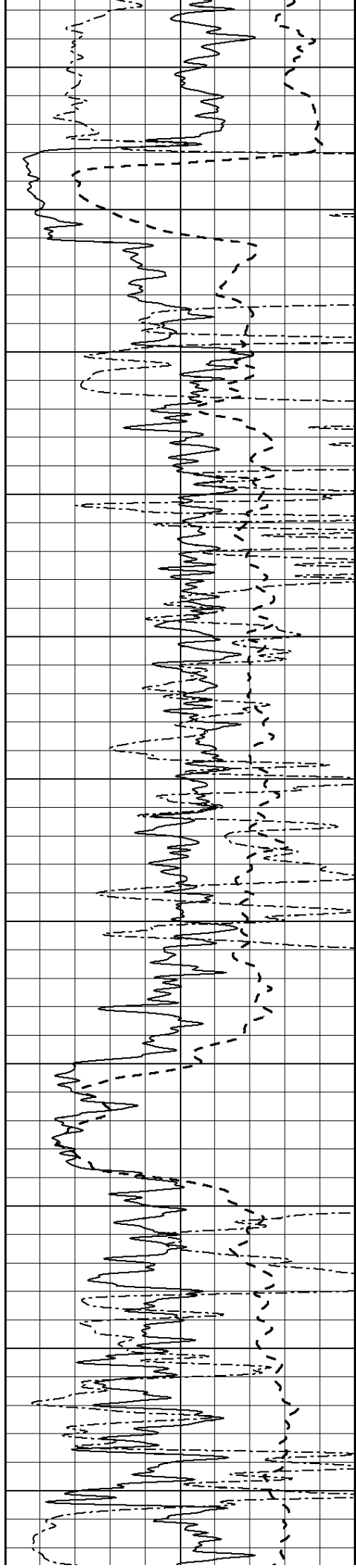




1000  
1050  
1100  
1150  
1200  
1250  
1300  
1350  
1400  
1450  
1500







2100

2150

2200

2250

2300

2350

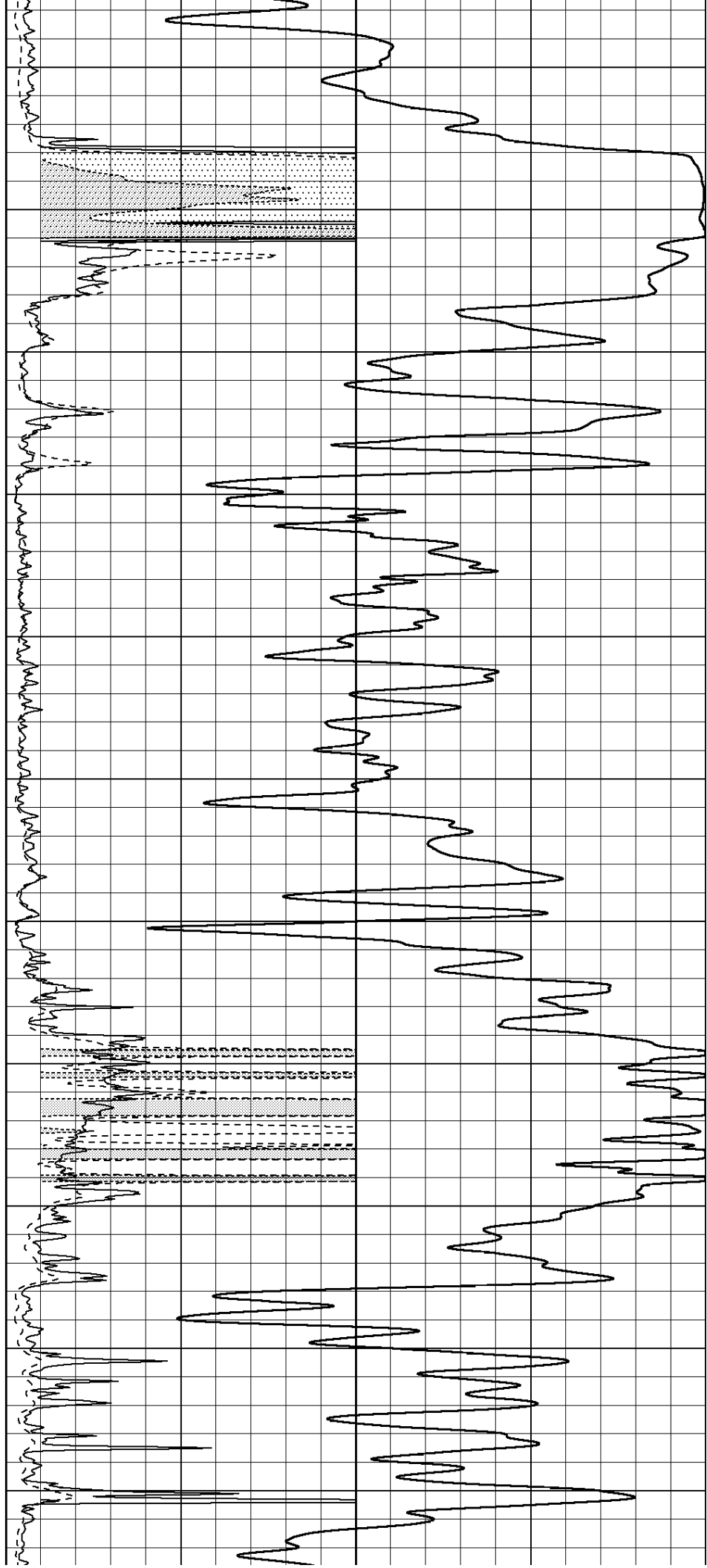
2400

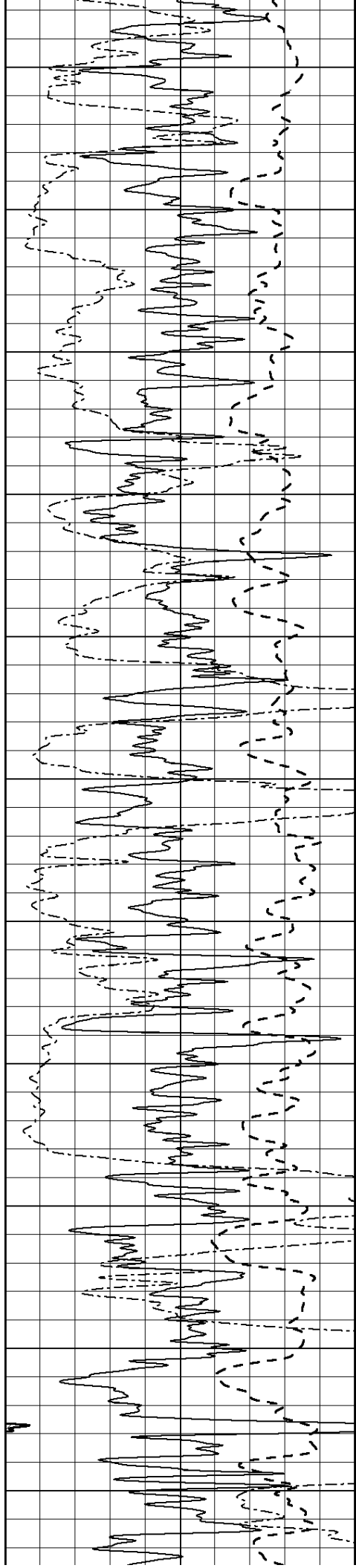
2450

2500

2550

2600





2650

2700

2750

2800

2850

2900

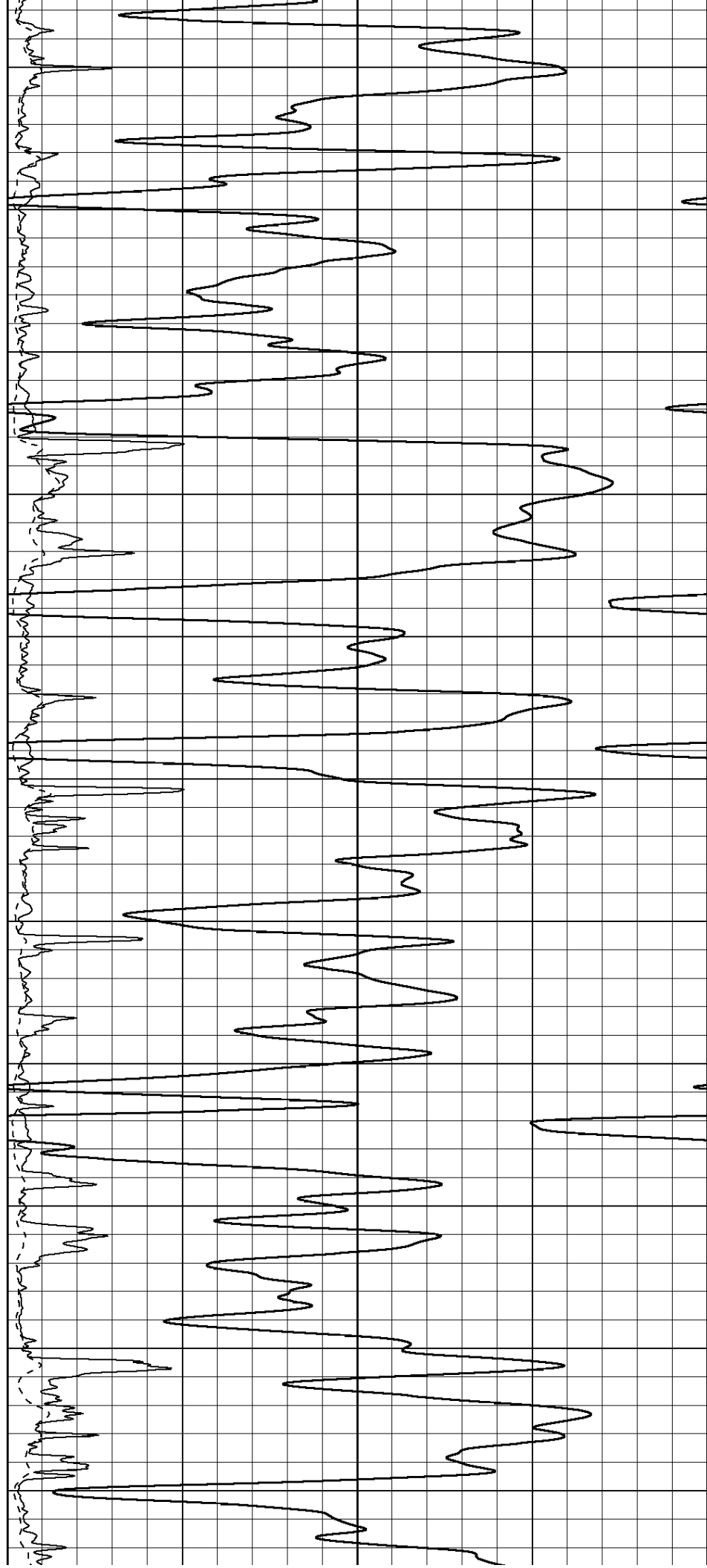
2950

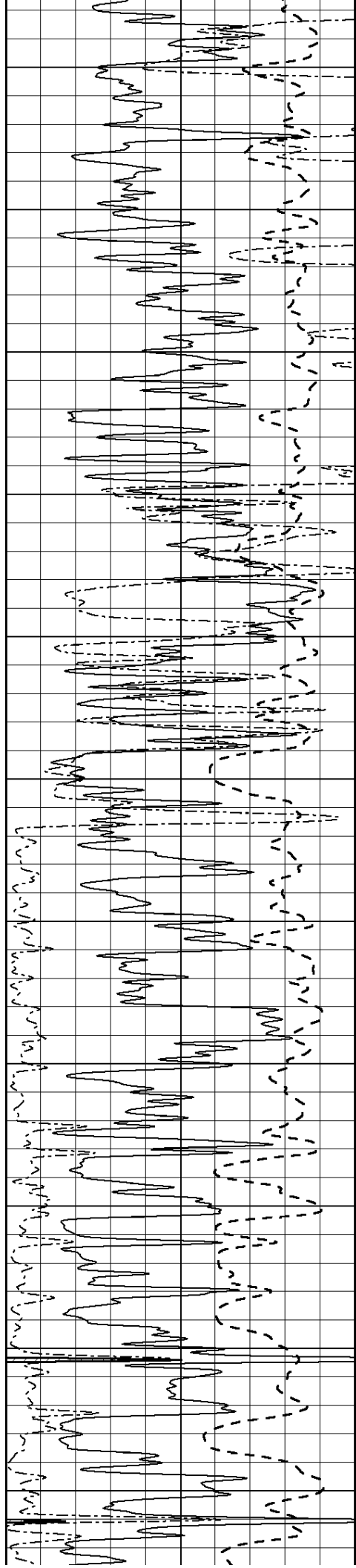
3000

3050

3100

3150





3200

3250

3300

3350

3400

3450

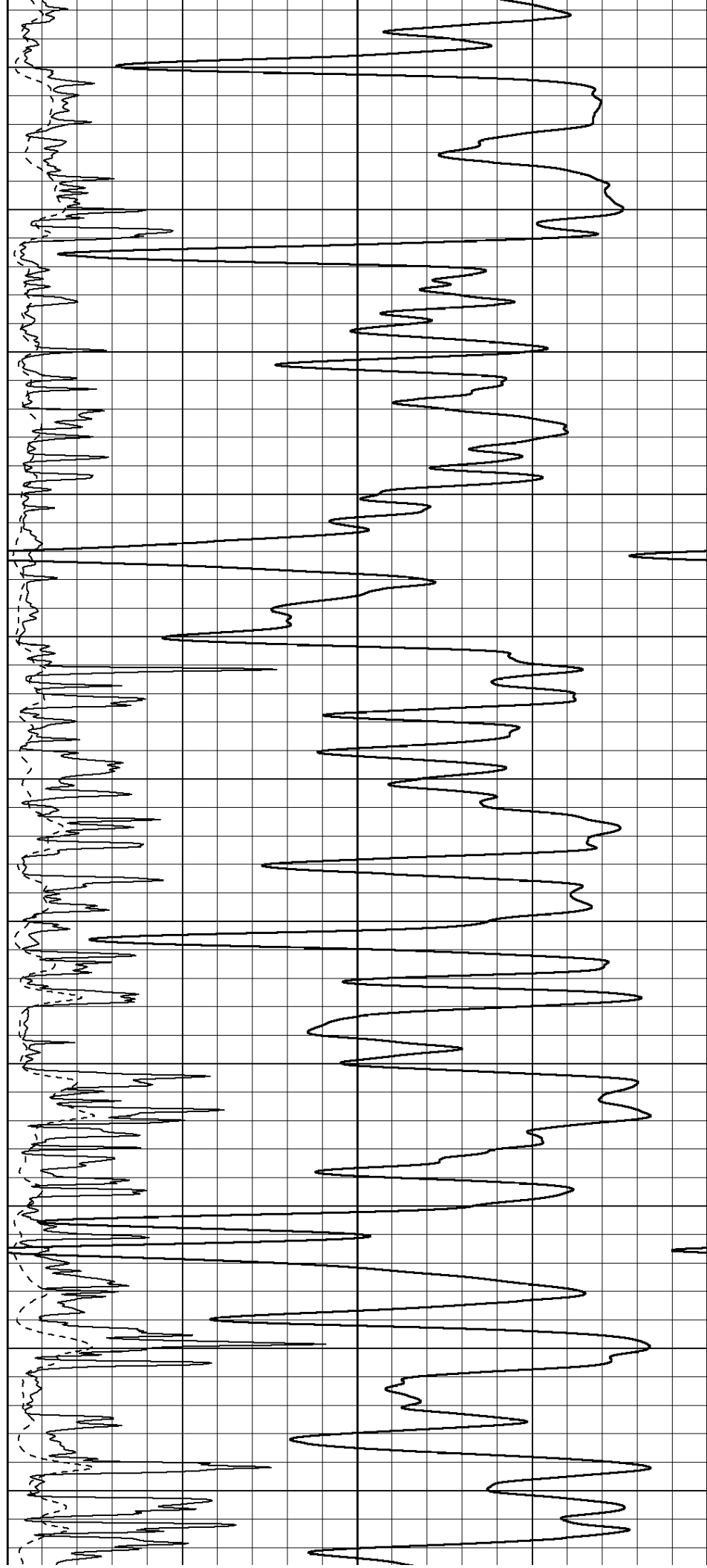
3500

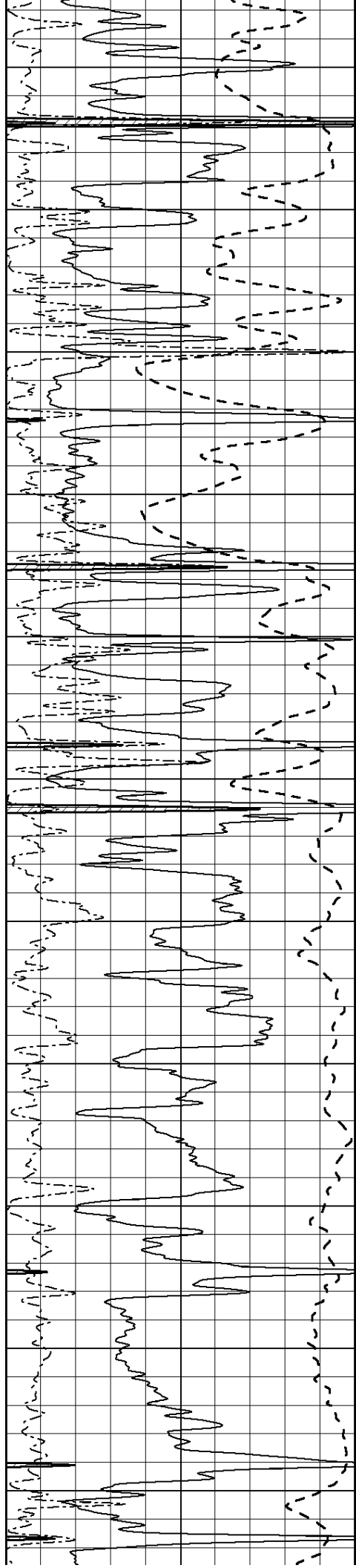
3550

3600

3650

3700





3750

3800

3850

3900

3950

4000

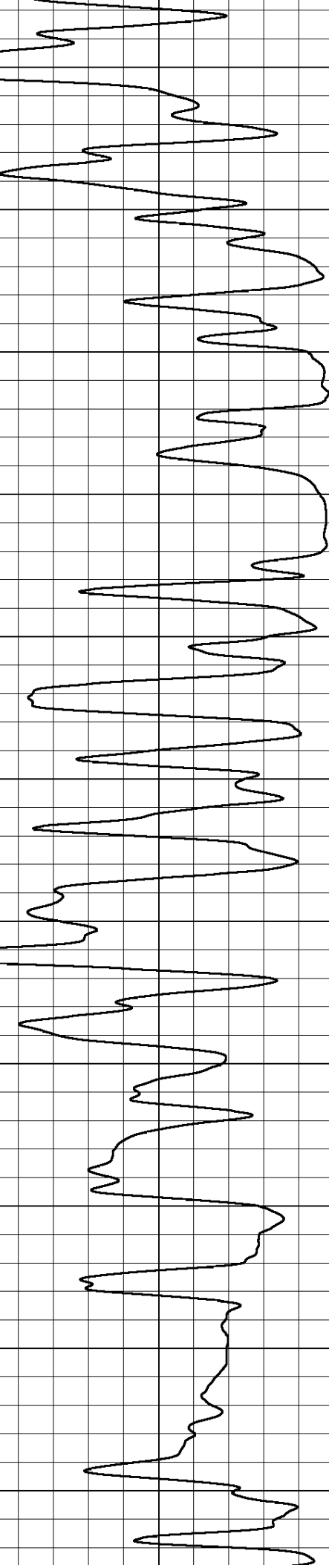
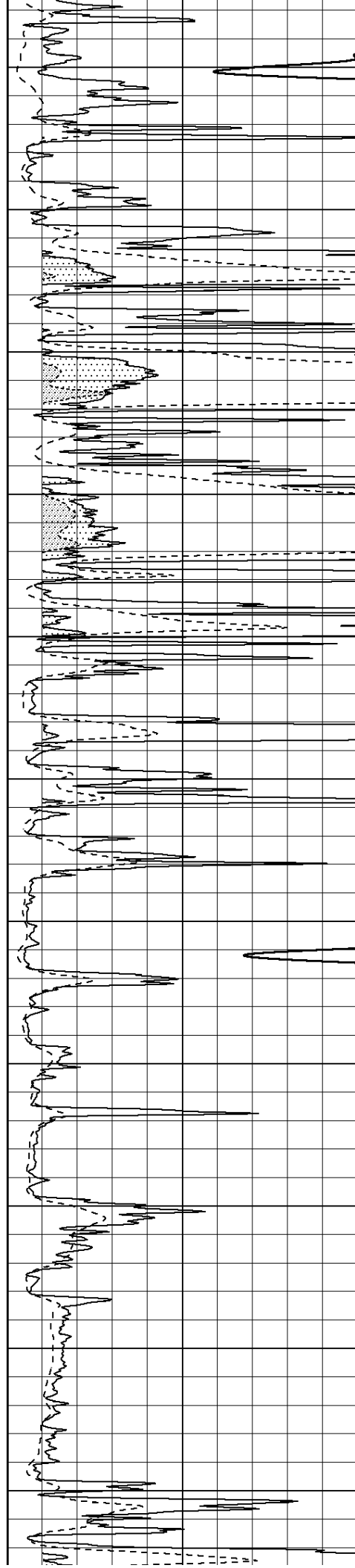
4050

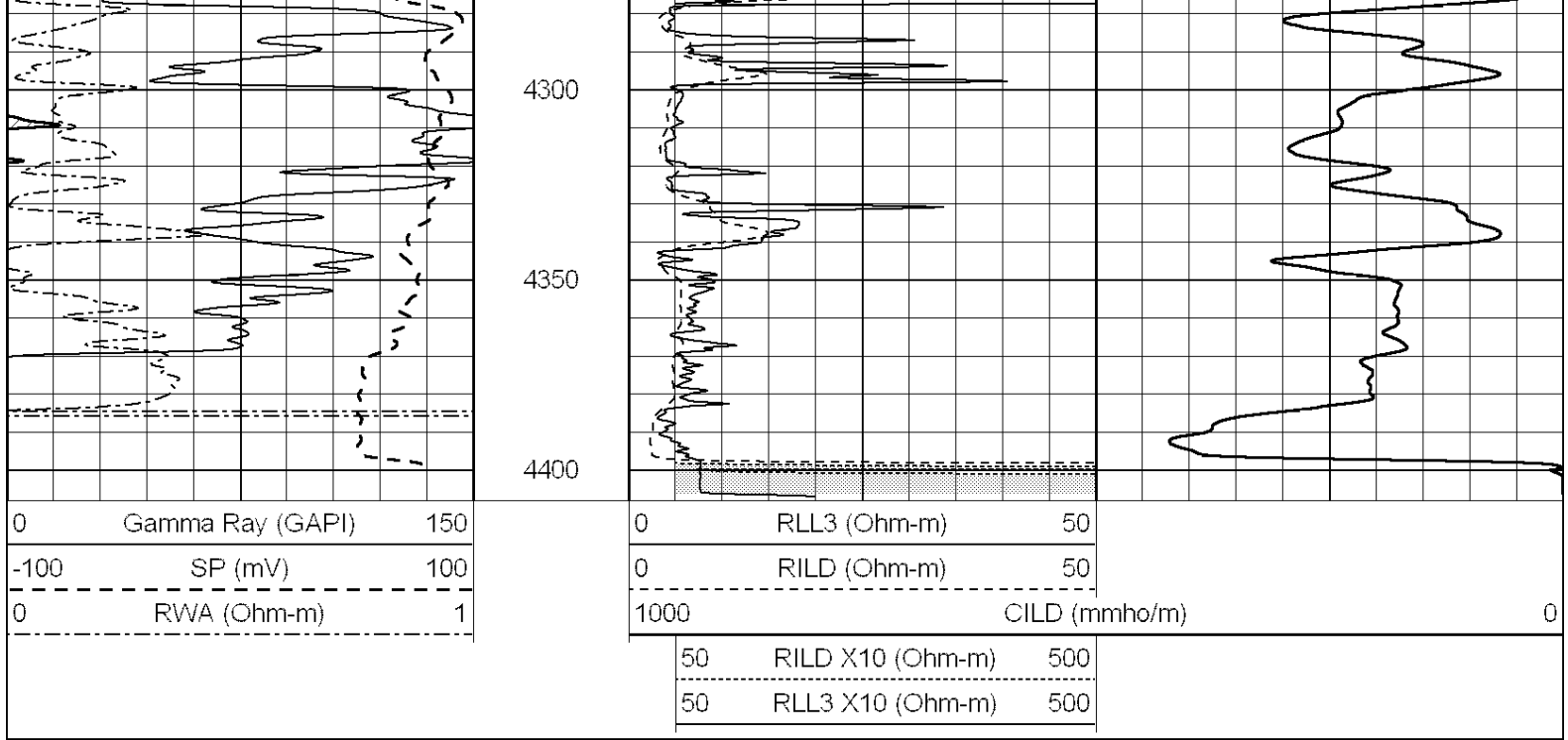
4100

4150

4200

4250

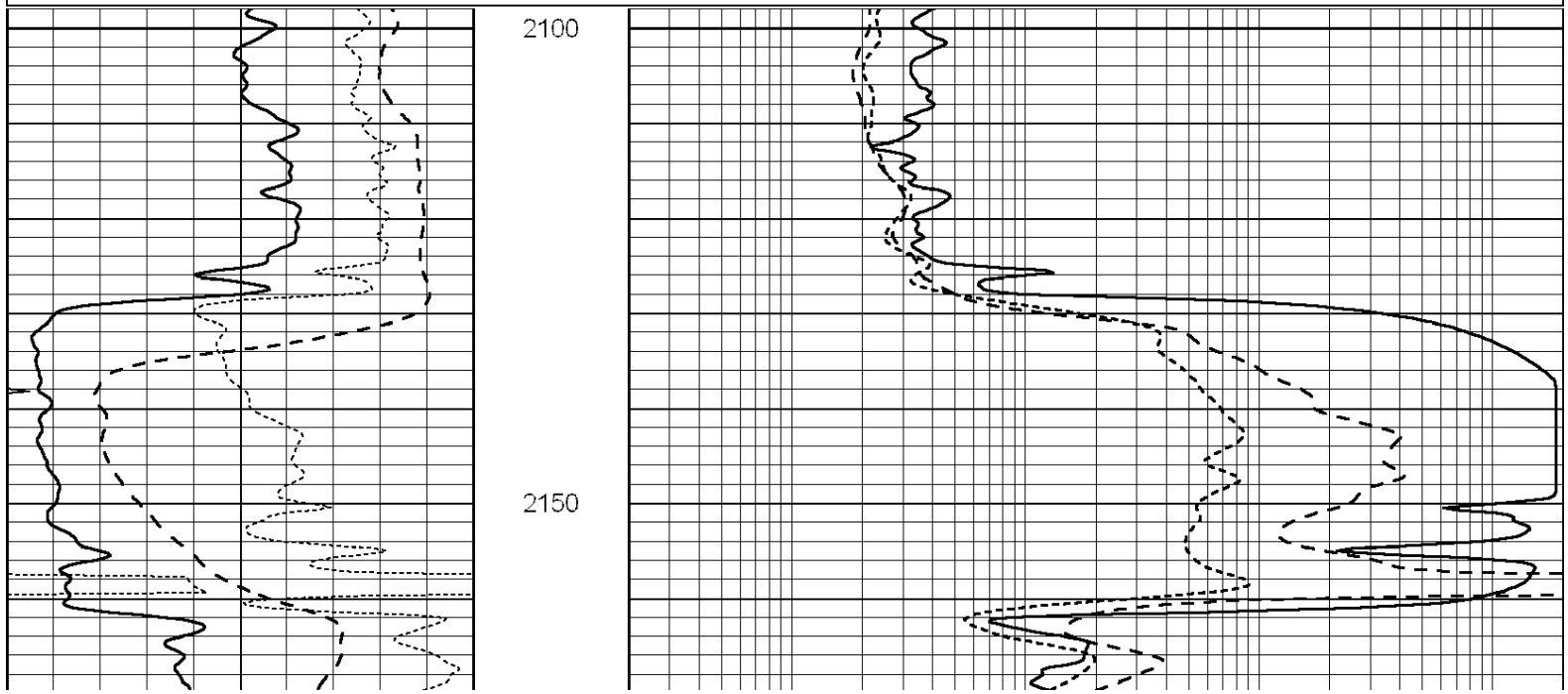


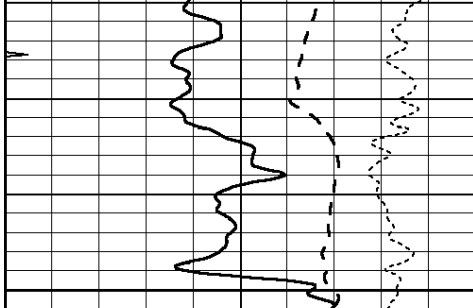


# ANHYDRITE

Database File: 26634ddn.db  
 Dataset Pathname: pass3.4  
 Presentation Format: \_dil  
 Dataset Creation: Tue Aug 25 10:34:21 2015 by Calc SOC 120430  
 Charted by: Depth in Feet scaled 1:240

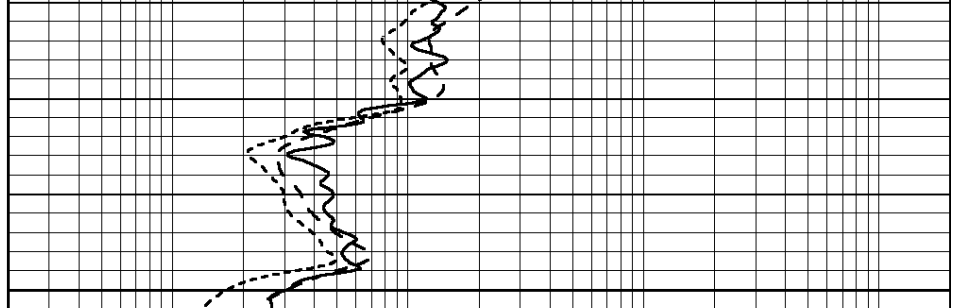
0	GAMMA RAY (GAPI)	150	0.2	SHALLOW GUARD (Ohm-m)	2000
-100	SP (mV)	100	0.2	DEEP INDUCTION (Ohm-m)	2000
-250	Rxo/Rt	50	0.2	MEDIUM INDUCTION (Ohm-m)	2000
0	MINMK	20			





2200

0	GAMMA RAY (GAPI)	150
-100	SP (mV)	100
-250	Rxo/Rt	50
0	MINMK	20



0.2	SHALLOW GUARD (Ohm-m)	2000
0.2	DEEP INDUCTION (Ohm-m)	2000
0.2	MEDIUM INDUCTION (Ohm-m)	2000

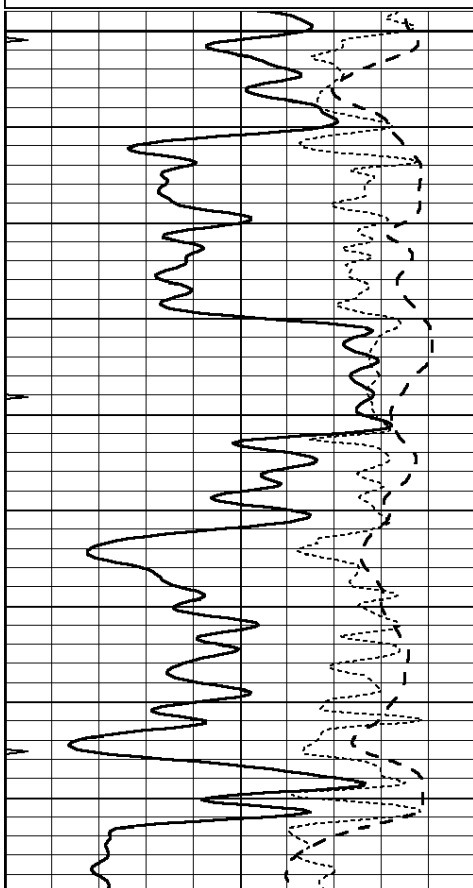


# MAIN SECTION

Database File: 26634ddn.db  
 Dataset Pathname: pass3.3  
 Presentation Format: \_dil  
 Dataset Creation: Tue Aug 25 10:32:51 2015 by Calc SOC 120430  
 Charted by: Depth in Feet scaled 1:240

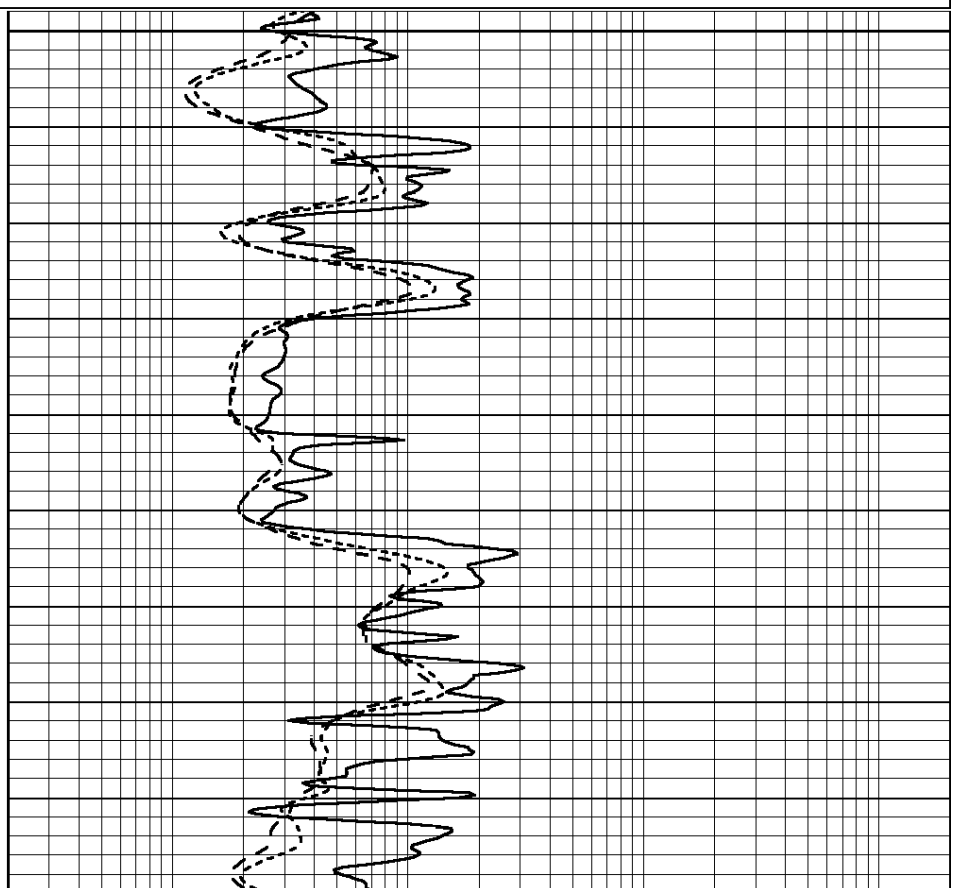
0	GAMMA RAY (GAPI)	150
-100	SP (mV)	100
-250	Rxo/Rt	50
0	MINMK	20

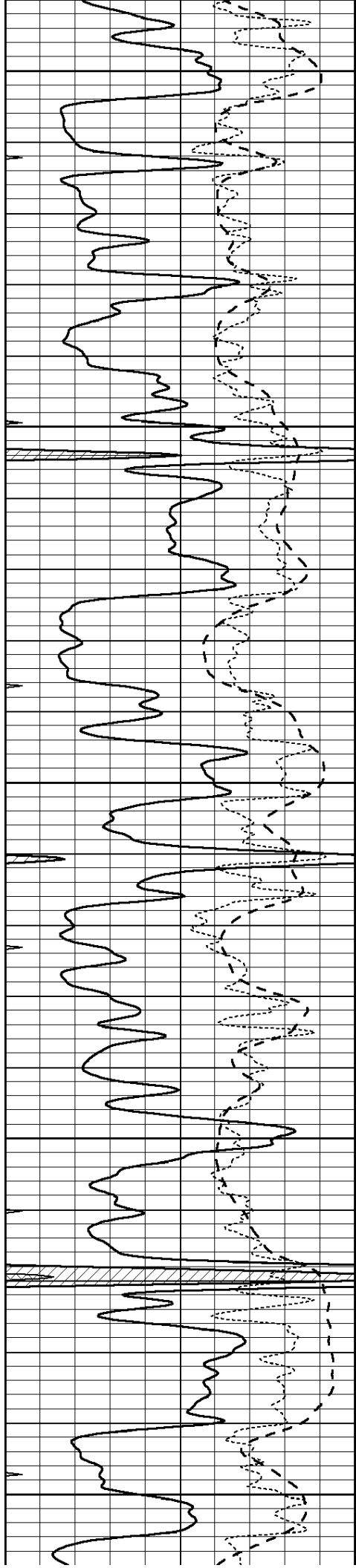
0.2	SHALLOW GUARD (Ohm-m)	2000
0.2	DEEP INDUCTION (Ohm-m)	2000
0.2	MEDIUM INDUCTION (Ohm-m)	2000



3500

3550





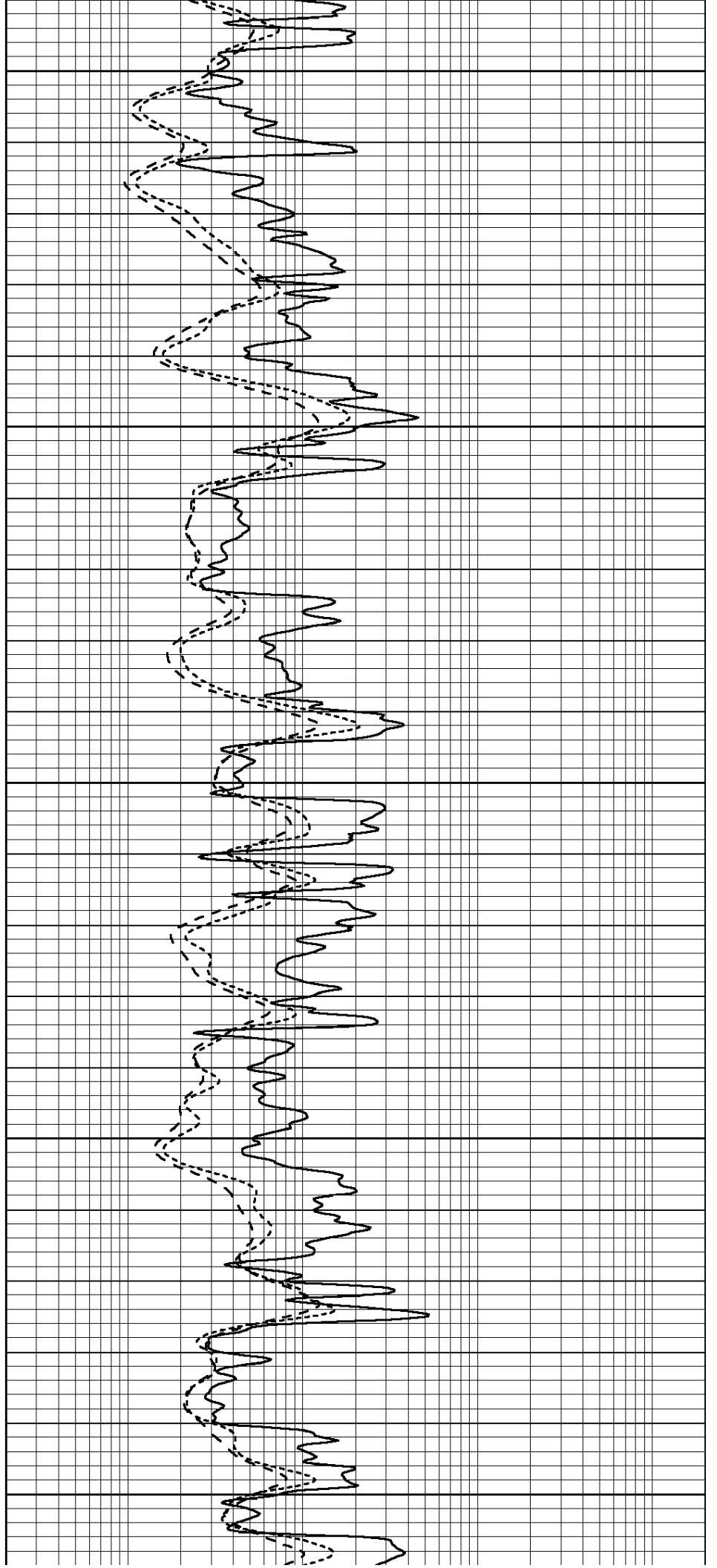
3600

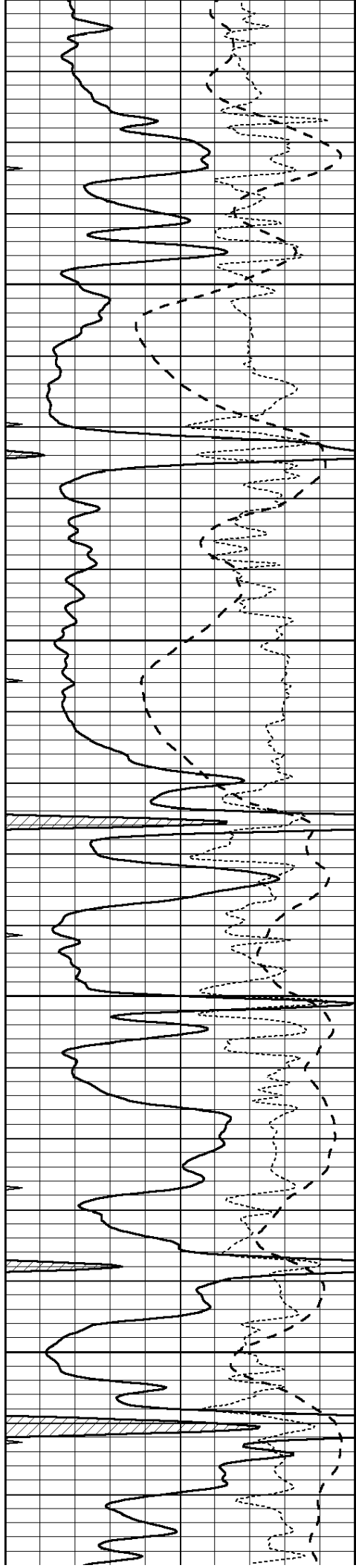
3650

3700

3750

3800



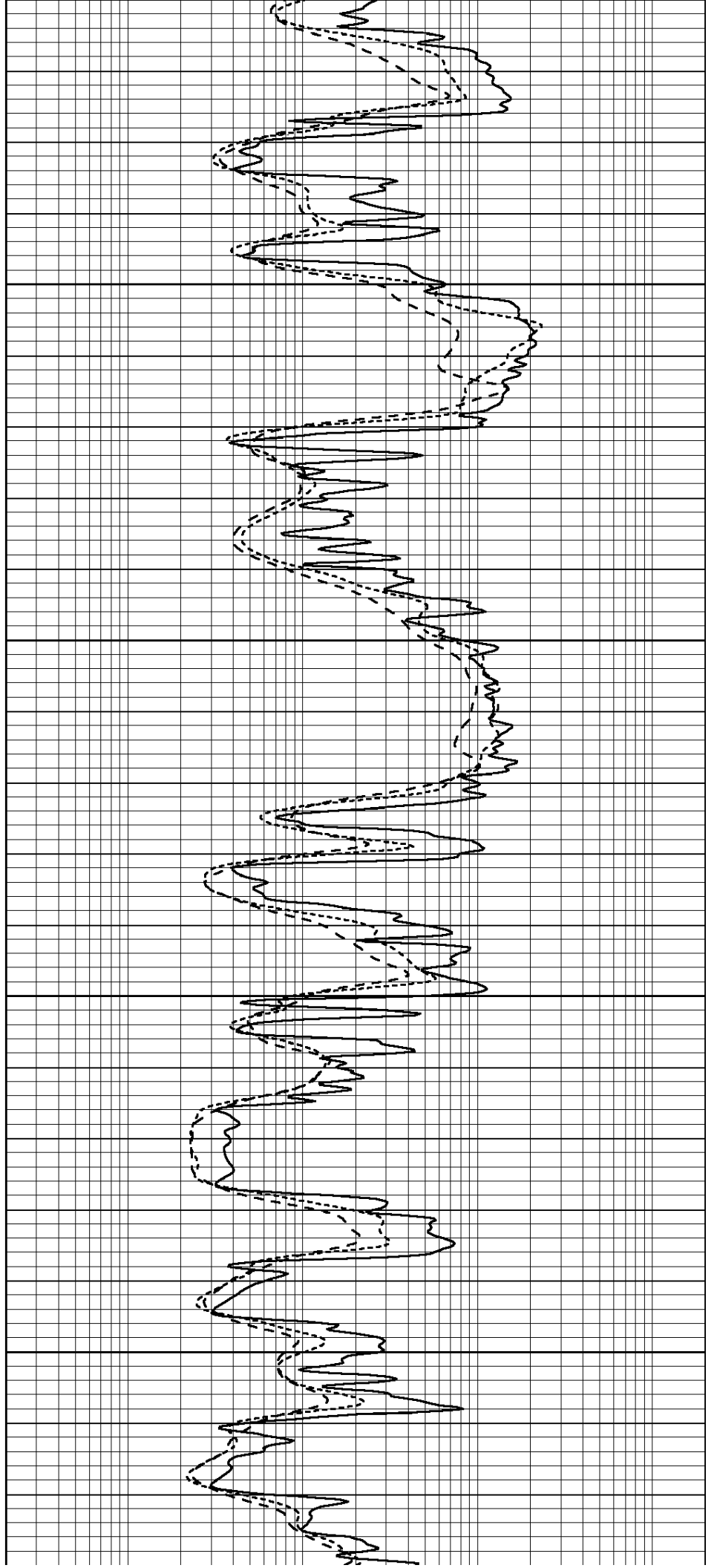


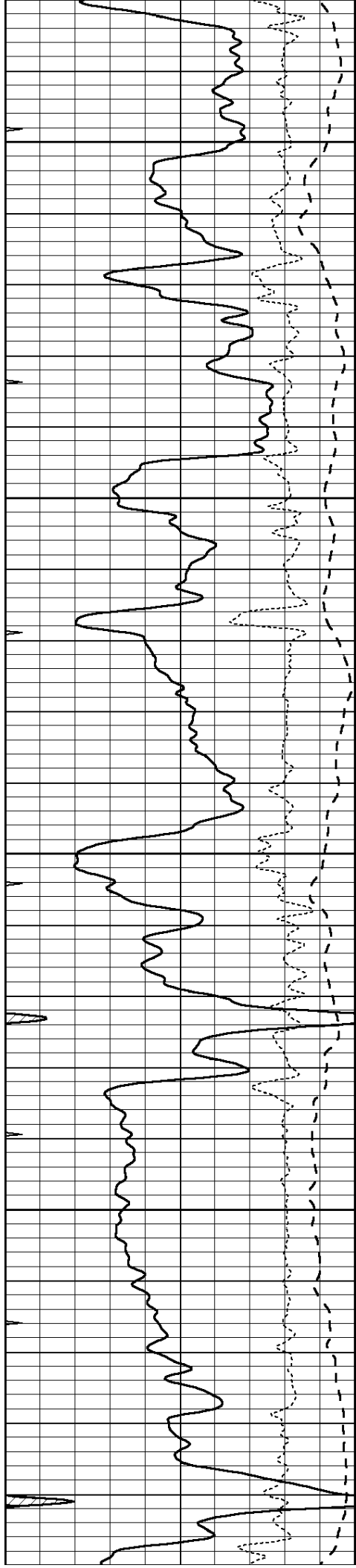
3850

3900

3950

4000





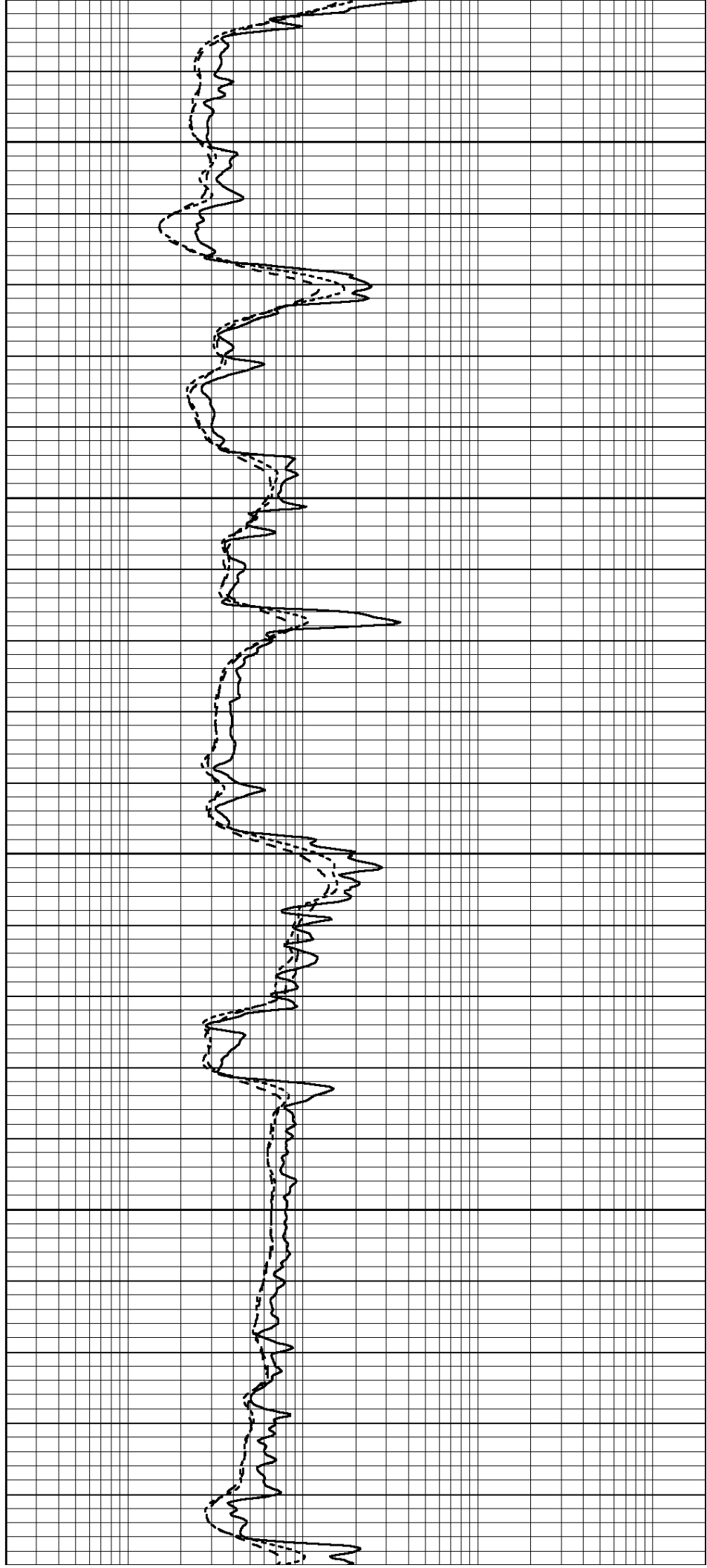
4050

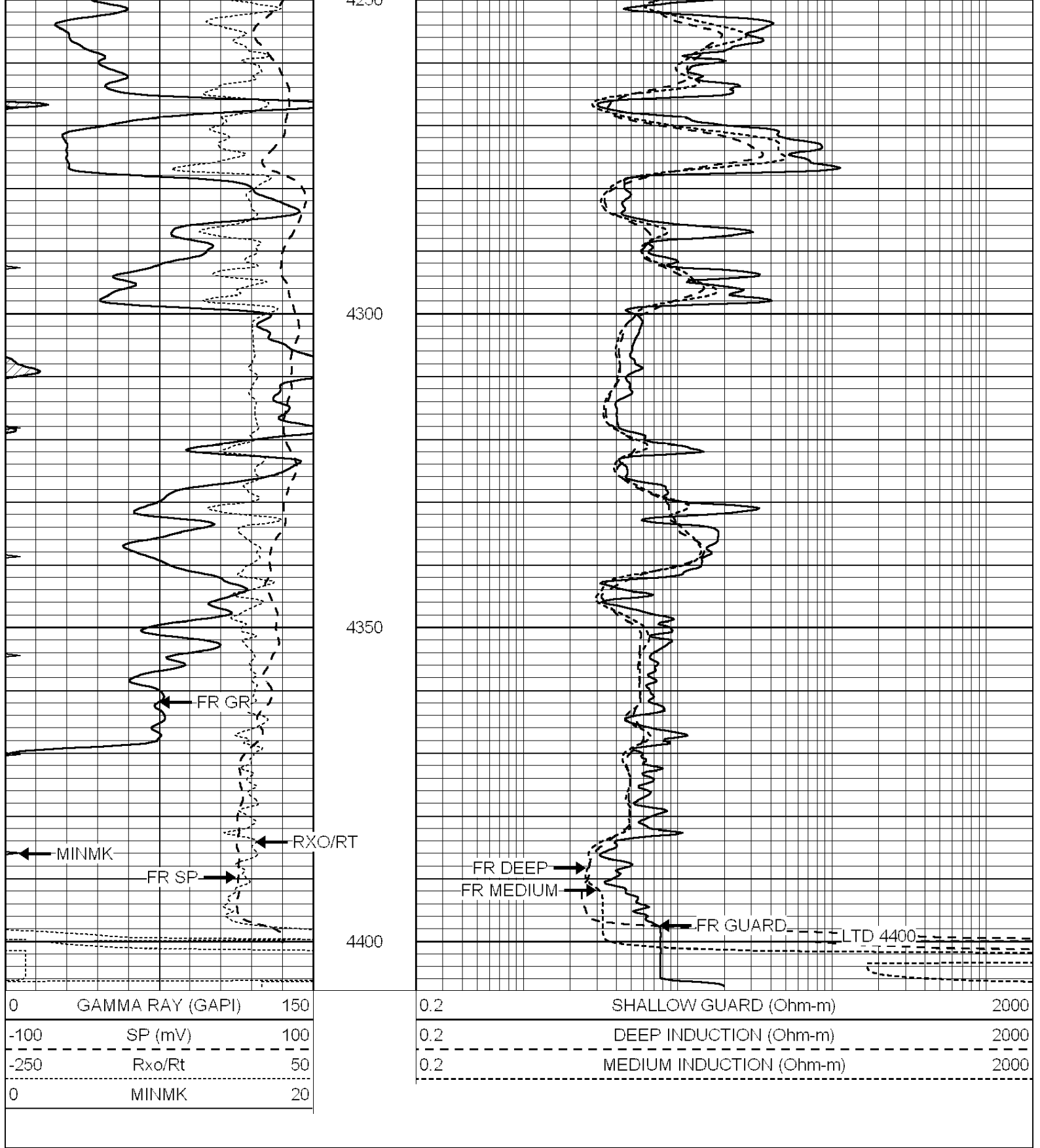
4100

4150

4200

4250



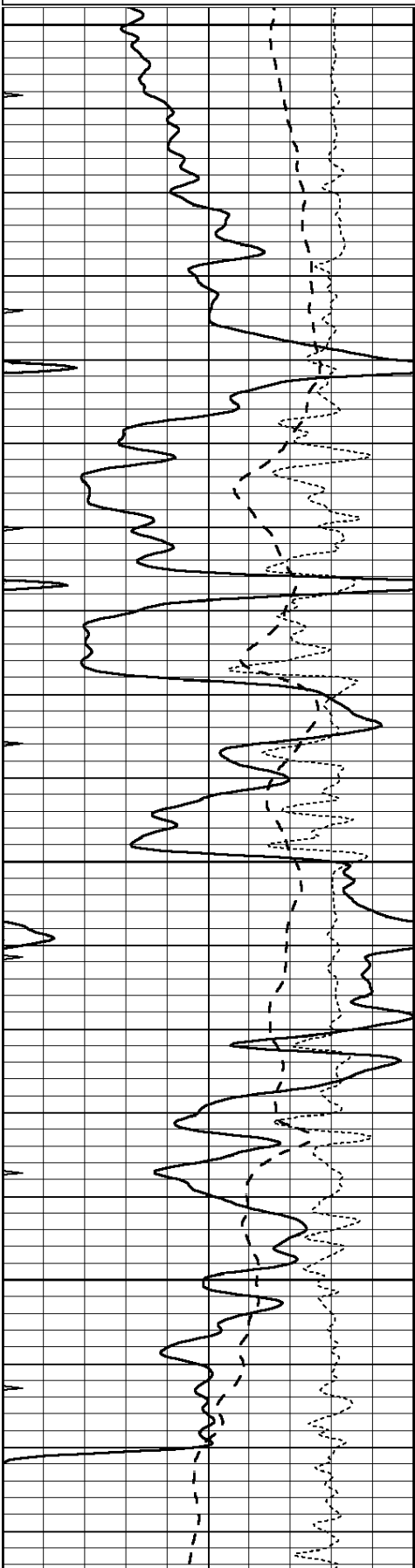


# REPEAT SECTION

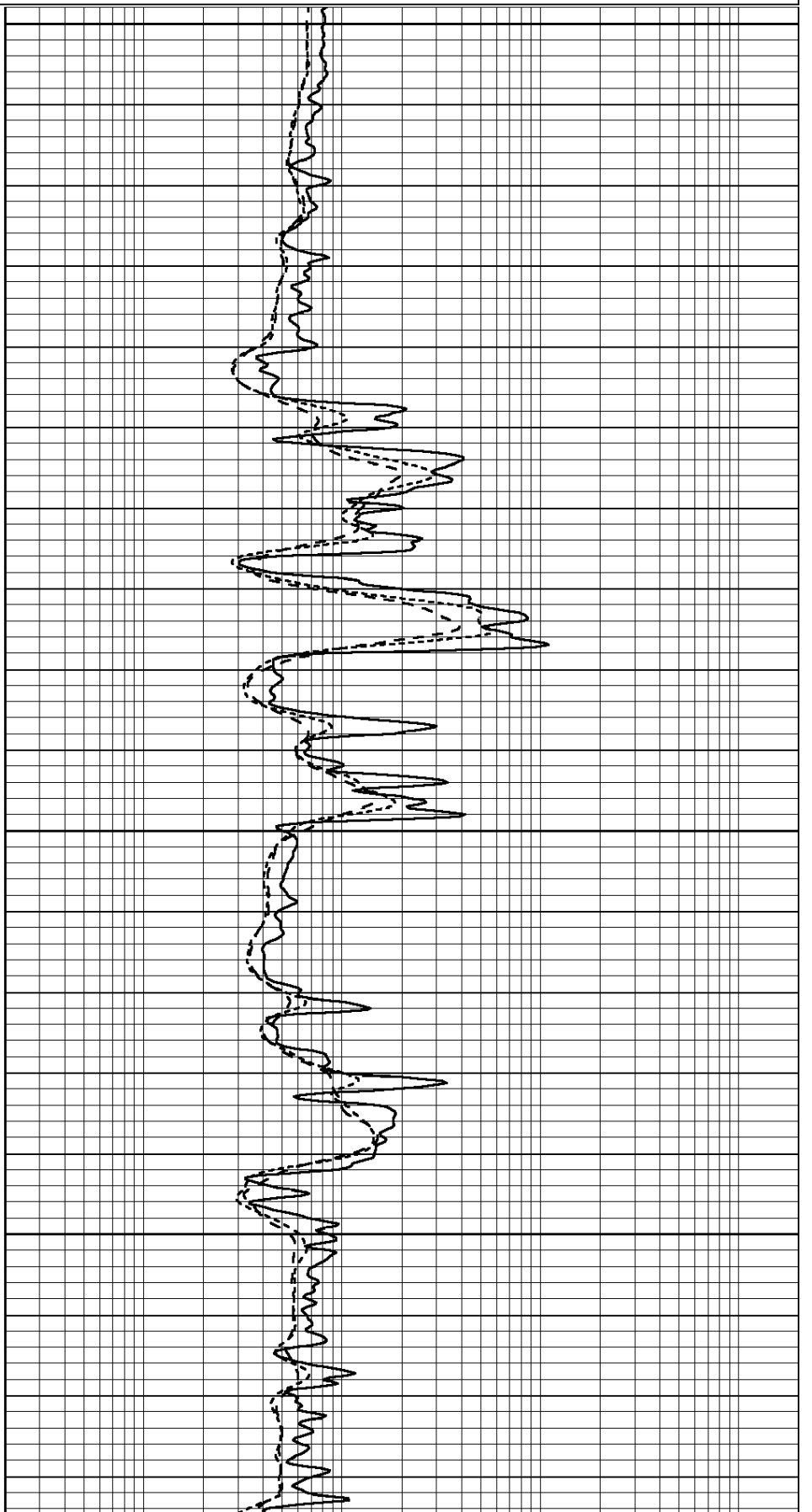
Database File: 26634ddn.db  
 Dataset Pathname: pass2.6  
 Presentation Format: \_dil

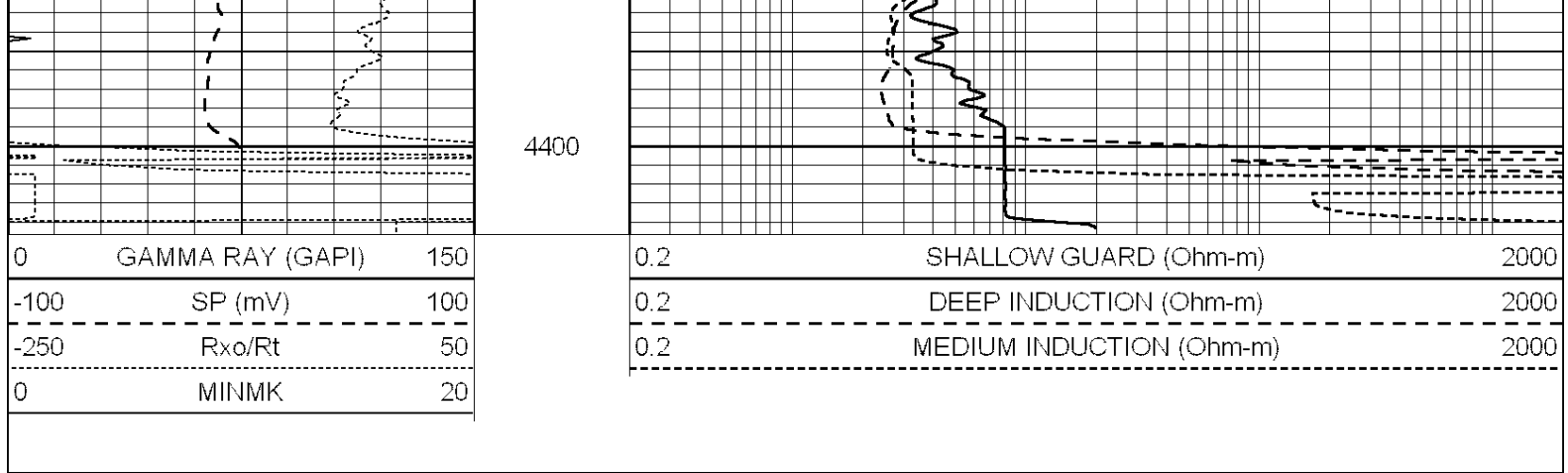
0	GAMMA RAY (GAPI)	150
-100	SP (mV)	100
-250	Rxo/Rt	50
0	MINMK	20

0.2	SHALLOW GUARD (Ohm-m)	2000
0.2	DEEP INDUCTION (Ohm-m)	2000
0.2	MEDIUM INDUCTION (Ohm-m)	2000



4200  
4250  
4300  
4350





Calibration Report

Database File: 26634ddn.db  
 Dataset Pathname: pass3.3  
 Dataset Creation: Tue Aug 25 10:32:51 2015 by Calc SOC 120430

Dual Induction Calibration Report

Serial-Model: PROBE9-DILG  
 Surface Cal Performed: Thu Aug 13 21:13:38 2015  
 Downhole Cal Performed: Mon Jul 28 12:02:56 2008  
 After Survey Verification Performed: Mon Jul 28 12:02:56 2008

Surface Calibration

Loop:	Readings				References		Results	
	Air	Loop	V		Air	Loop	m	b
Deep	-0.014	0.629	V	0.000	400.000	mmho/m	670.000	-16.000
Medium	0.039	0.728	V	0.000	464.000	mmho/m	670.000	-28.000
Internal:	Zero	Cal		Zero	Cal		m	b
Deep	0.011	0.610	V	0.000	400.000	mmho/m	667.135	-7.256
Medium	0.005	0.712	V	0.000	464.000	mmho/m	655.677	-3.102

Downhole Calibration

	Readings				References		Results	
	Zero	Cal			Zero	Cal	m'	b'
Deep	0.000	0.000	mmho/m	14.508	388.384	mmho/m	1.000	0.000
Medium	0.000	0.000	mmho/m	166.367	504.400	mmho/m	1.000	0.000
LL3		7.500	V		1400.000	Ohm-m		
		0.000	V		20.000	Ohm-m		
		-7.200	V		4000.000	mmho-m		

After Survey Verification

	Readings				Targets		Results	
	Zero	Cal			Zero	Cal	m'	b'
Deep	0.000	0.000	mmho/m	0.000	0.000	mmho/m	0.000	0.000
Medium	0.000	0.000	mmho/m	0.000	0.000	mmho/m	0.000	0.000
LL3		1.000	Ohm-m		1.000	Ohm-m		
		0.000	Ohm-m		0.000	Ohm-m		
		1.000	mmho-m		1.000	mmho-m		

Litho Density Calibration Report

Serial: 003N Model: PRB

	Background	Magnesium	Aluminum	Sandstone	
Window 1	2042.6	12312.8	4225.8	13758.4	cps
Window 2	1855.8	10134.7	3624.2	11113.1	cps
Window 3	1639.4	6760.2	2716.3	7260.3	cps
Window 4	466.4	469.2	466.1	476.5	cps
Long Space	0.0	8278.9	1768.4	9257.4	cps
Short Space	2.2	2377.3	1544.1	2574.2	cps
Rho		1.7100	2.5900	1.3800	g/cc
Pe		0.0000	2.5700	1.5500	
Rib Angle	: 44.4	Rib Slope	: 0.979	Density/Spine Ratio	: 0.549
Spine Angle	: 74.4	Spine Slope	: 3.577	Spine Intercept	: -18.8

Before Survey Verification		Performed Wed Dec 31 18:00:00 1969			
Window 1	0.0	0.0	0.0	0.0	cps
Window 2	0.0	0.0	0.0	0.0	cps
Window 3	0.0	0.0	0.0	0.0	cps
Window 4	0.0	0.0	0.0	0.0	cps
Long Space	0.0	0.0	0.0	0.0	cps
Short Space	0.0	0.0	0.0	0.0	cps
Measured Rho		0.0000	0.0000	0.0000	g/cc
Measured Correction		0.0000	0.0000	0.0000	g/cc
Measured Pe			0.0000	0.0000	

After Survey Verification		Performed Wed Dec 31 18:00:00 1969			
Window 1	0.0	0.0	0.0	0.0	cps
Window 2	0.0	0.0	0.0	0.0	cps
Window 3	0.0	0.0	0.0	0.0	cps
Window 4	0.0	0.0	0.0	0.0	cps
Long Space	0.0	0.0	0.0	0.0	cps
Short Space	0.0	0.0	0.0	0.0	cps
Measured Rho		0.0000	0.0000	0.0000	g/cc
Measured Correction		0.0000	0.0000	0.0000	g/cc
Measured Pe			0.0000	0.0000	

Compensated Neutron Calibration Report

Serial Number: 070808  
Tool Model: Probe

PRE-SURVEY VERIFICATION				
Detector	Readings	Measured	Target	
Short Space	cps			
Long Space	cps	pu	pu	

POST-SURVEY VERIFICATION				
Detector	Readings	Measured	Target	
Short Space	cps			
Long Space	cps	pu	pu	

Gamma Ray Calibration Report

Serial Number: 070558  
Tool Model: OPEN\_GR

Performed: Thu Aug 13 23:52:58 2015

Calibrator Value: 1.0 GAPI

Background Reading: 0.0 cps

Calibrator Reading: 1.0 cps

Sensitivity: 0.2800 GAPI/cps