



**COMPLETION  
& PRODUCTION  
SERVICES CO.**

**DUAL INDUCTION  
LOG**

Company CHARTER ENERGY, INC.  
Well BLACKWELL "A" #1  
Field HURRAY  
County PAWNEE  
State KANSAS

Company CHARTER ENERGY, INC.  
Well BLACKWELL "A" #1  
Field HURRAY  
County PAWNEE State KANSAS

Location: API # : 15-145-21765-0000  
2210' FNL & 330' FWL  
N/2 - SW - SW - NW  
SEC 2 TWP 22S RGE 15W  
Permanent Datum GROUND LEVEL Elevation 1971  
Log Measured From KELLY BUSHING 6' A.G.L.  
Drilling Measured From KELLY BUSHING  
Other Services  
CDL/CNL  
MEL  
Elevation  
K.B. 1977  
D.F. 1975  
G.L. 1971

Date	5/22/14		
Run Number	ONE		
Depth Driller	3945		
Depth Logger	3934		
Bottom Logged Interval	3932		
Top Log Interval	00		
Casing Driller	8 5/8"@938'		
Casing Logger	939		
Bit Size	7 7/8"		
Type Fluid in Hole	CHEMICAL MUD	CHLORIDES 7,300 PPM	
Density / Viscosity	9.0/66		
pH / Fluid Loss	10.0/9.6		
Source of Sample	FLOWLINE		
Rim @ Meas. Temp	.600@82F		
Rmf @ Meas. Temp	.450@82F		
Rmc @ Meas. Temp	.720@82F		
Source of Rmf / Rmc	MEASUREMENT		
Rim @ BHT	.424@116F		
Time Circulation Stopped	8 HOURS		
Time Logger on Bottom	2:15 P.M.		
Maximum Recorded Temperature	116F		
Equipment Number	4854		
Location	HAYS, KANSAS		
Recorded By	JEFF LUEBBERS		
Witnessed By	KURT TALBOTT		

<<< Fold Here >>>

All interpretations are opinions based on inferences from electrical or other measurements and we cannot and do not guarantee the accuracy or correctness of any interpretation, and we shall not, except in the case of gross or willful negligence on our part, be liable or responsible for any loss, costs, damages, or expenses incurred or sustained by anyone resulting from any interpretation made by any of our officers, agents or employees. These interpretations are also subject to our general terms and conditions set out in our current Price Schedule.

**Comments**

THANK YOU FOR USING "NABORS" HAYS, KANSAS (785) 628-6395  
DIRECTIONS  
LARNED, KS., E. ON K-19 TO "30TH AVE.", 1/2N., E. INTO



**MAIN SECTION**

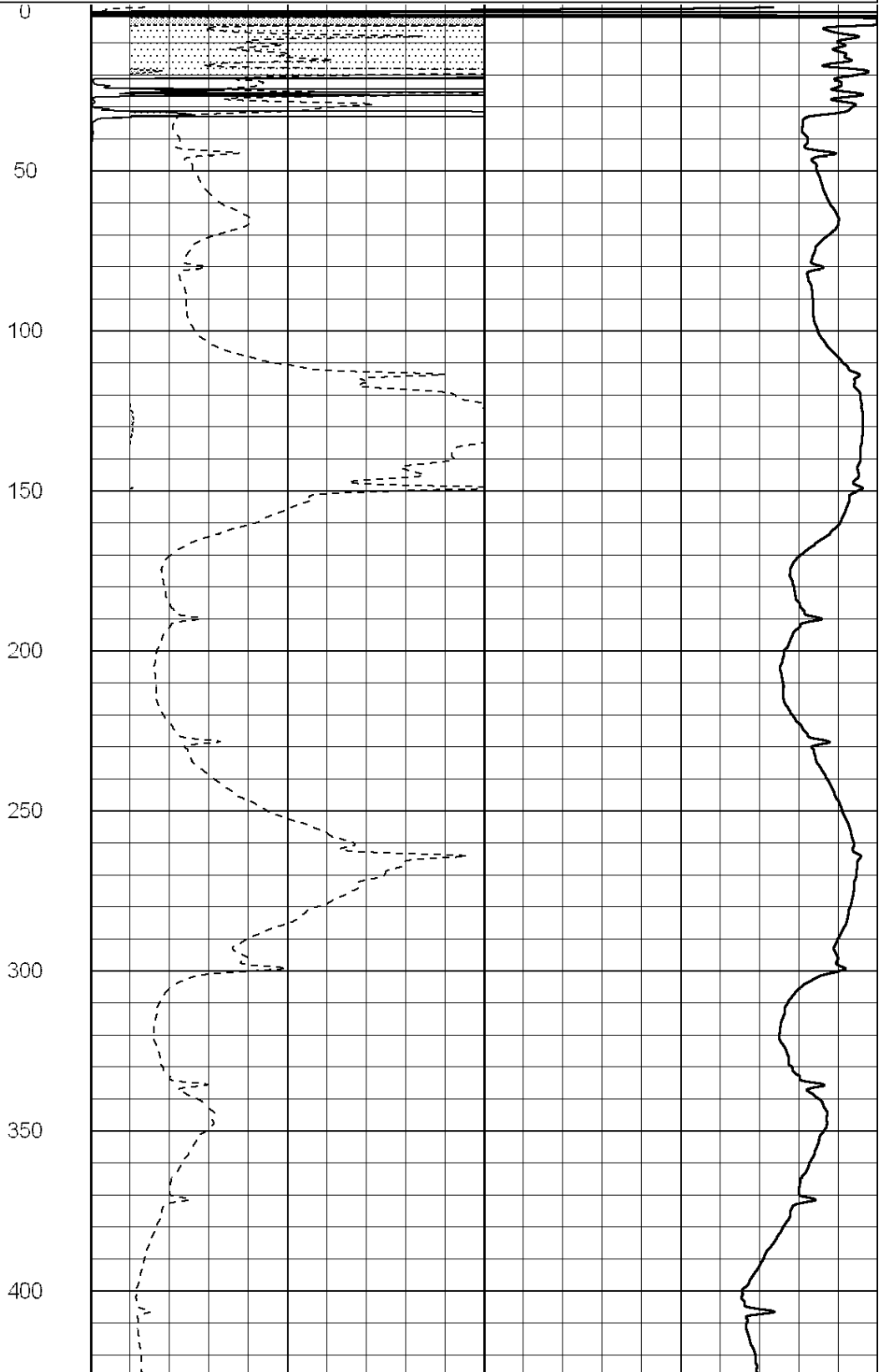
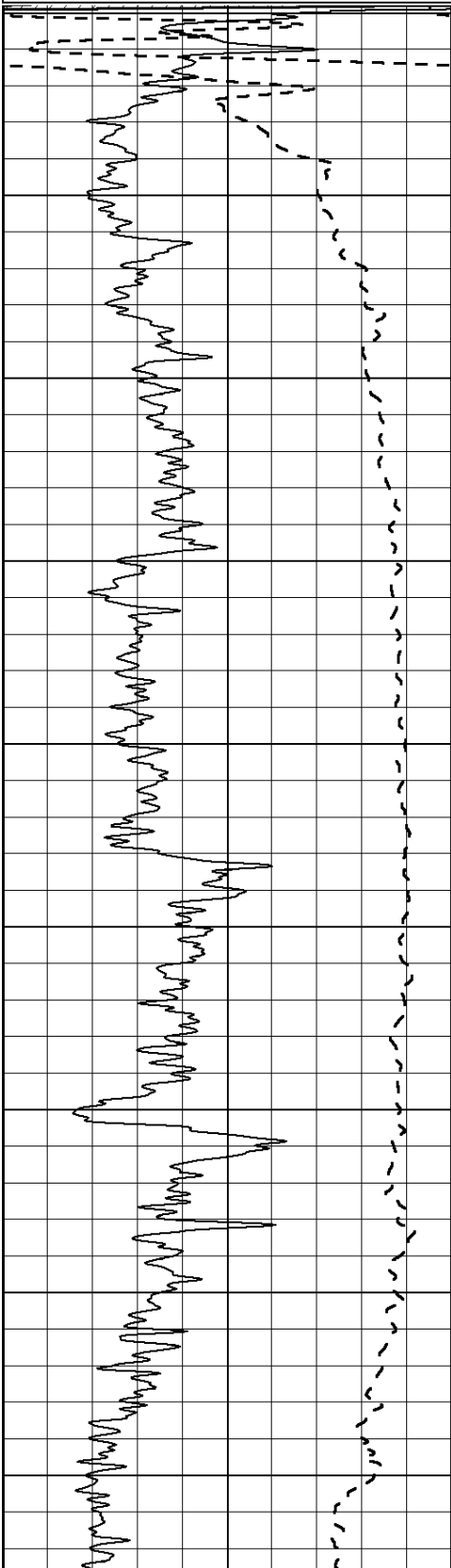
Database File: 24159ddn.db  
 Dataset Pathname: pass3.4  
 Presentation Format: dil2  
 Dataset Creation: Thu May 22 15:45:46 2014 by Calc SOC 120430  
 Charted by: Depth in Feet scaled 1:600

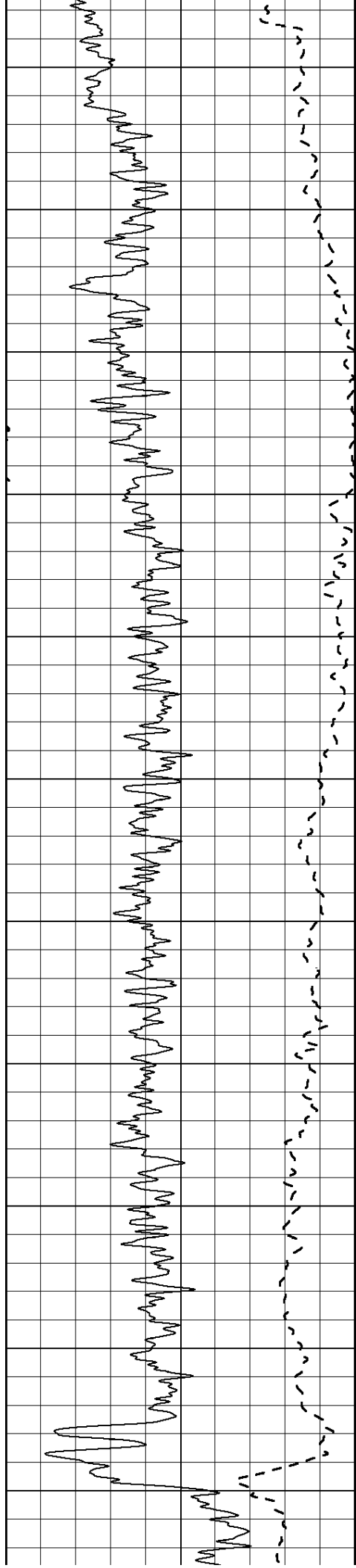
0	Gamma Ray (GAPI)	150
-100	SP (mV)	100

0	RLL3 (Ohm-m)	50
0	RILD (Ohm-m)	50

1000	CILD (mmho/m)	0
------	---------------	---

50	RILD X10 (Ohm-m)	500
50	RLL3 X10 (Ohm-m)	500





450

500

550

600

650

700

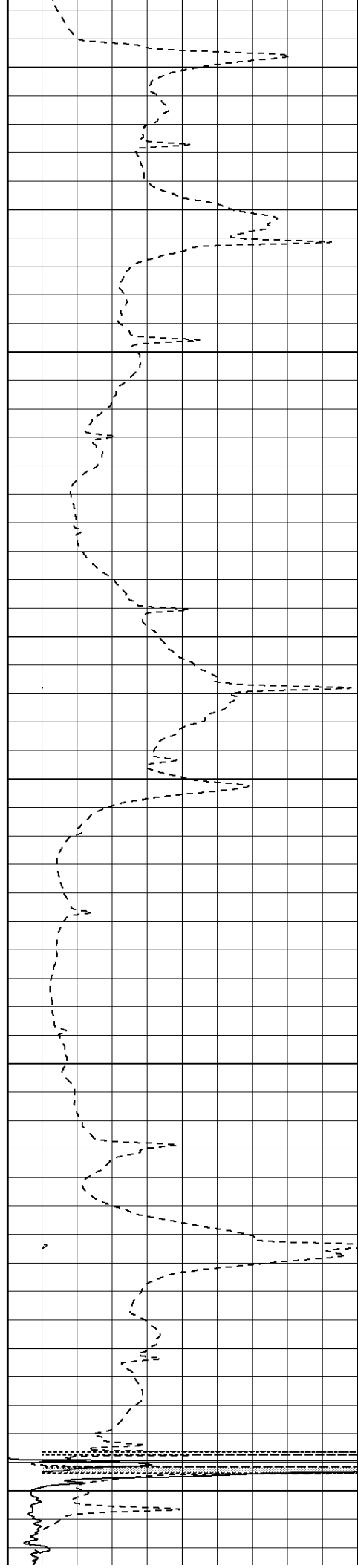
750

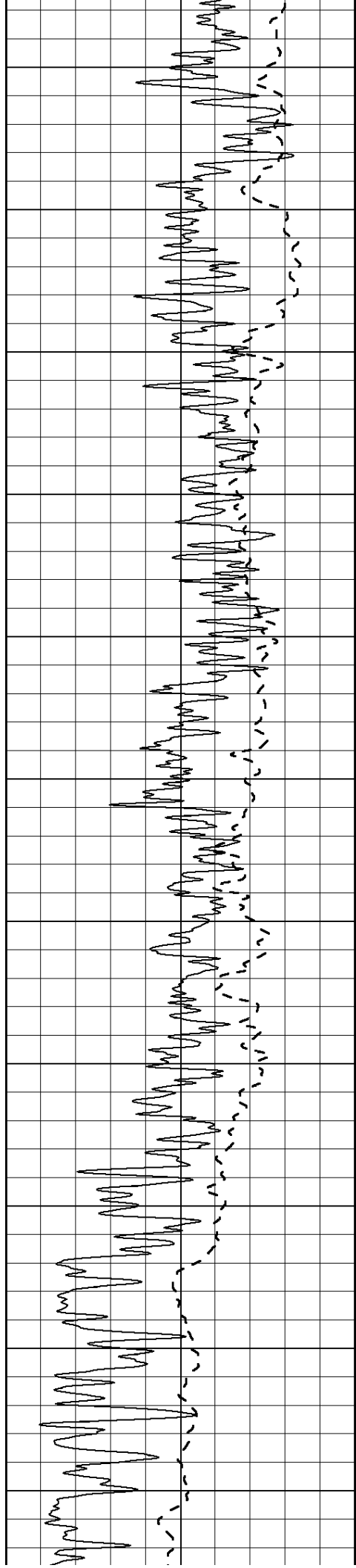
800

850

900

950





1000

1050

1100

1150

1200

1250

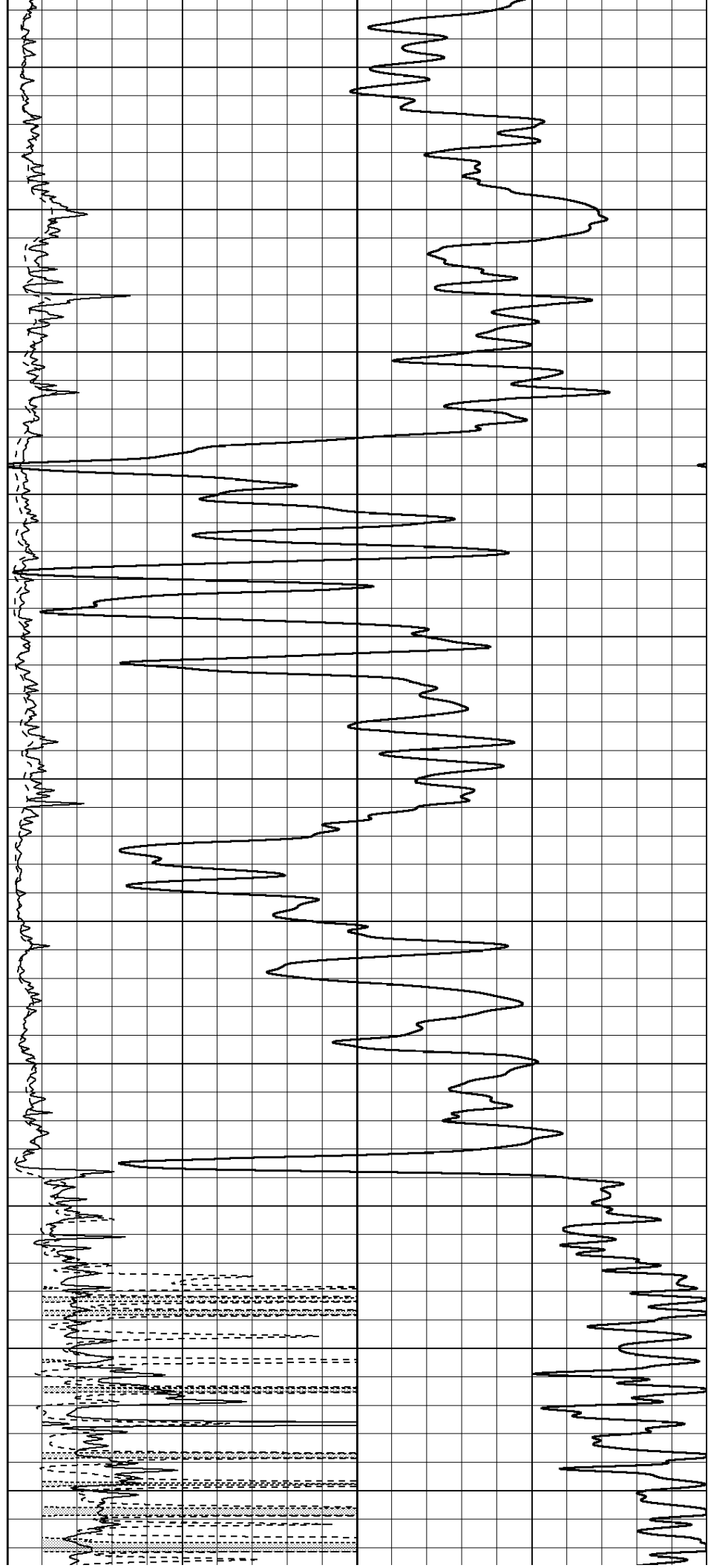
1300

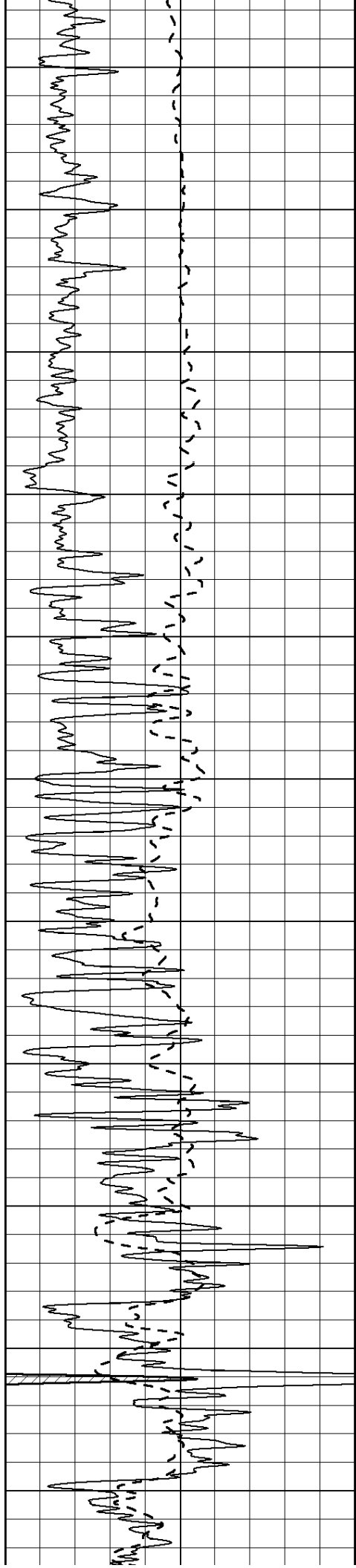
1350

1400

1450

1500





1550

1600

1650

1700

1750

1800

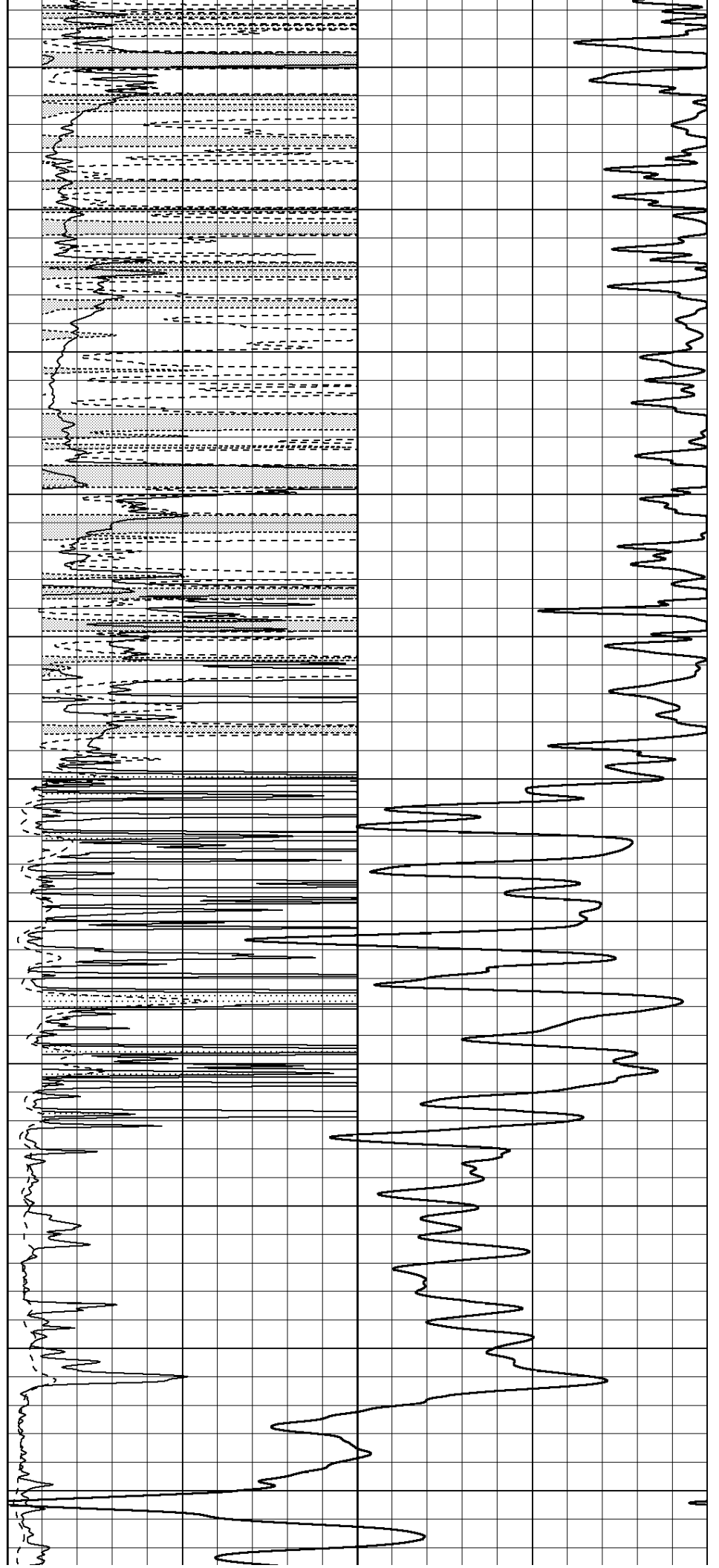
1850

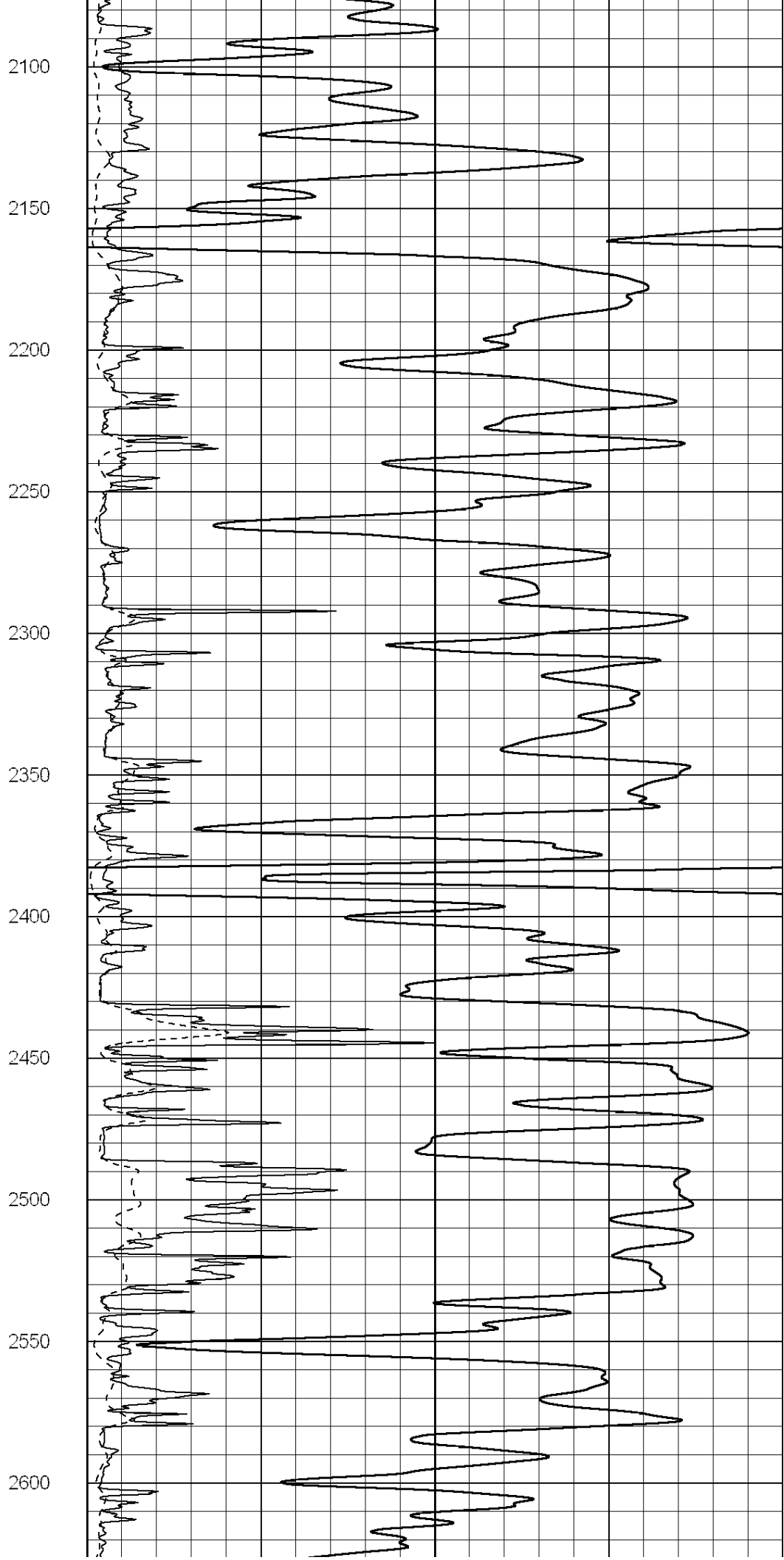
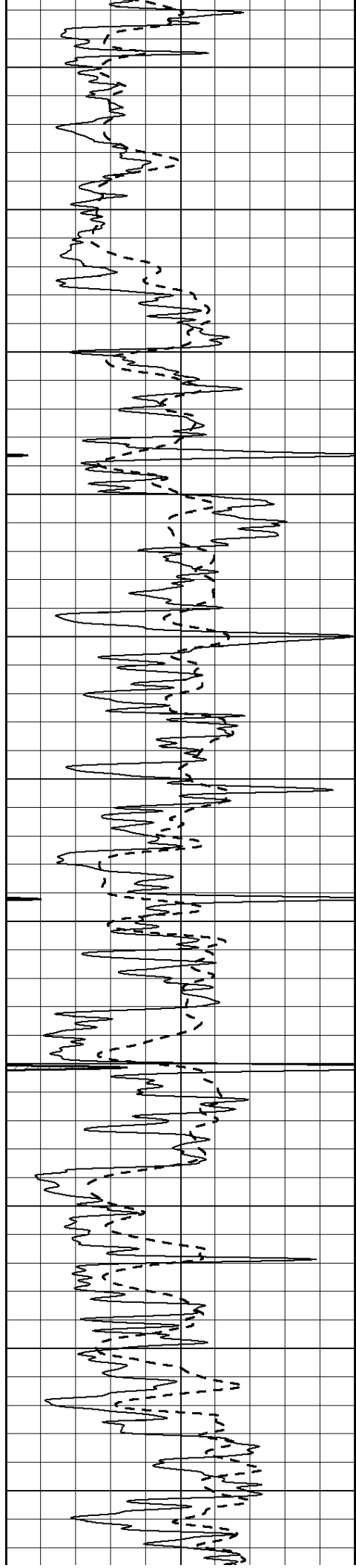
1900

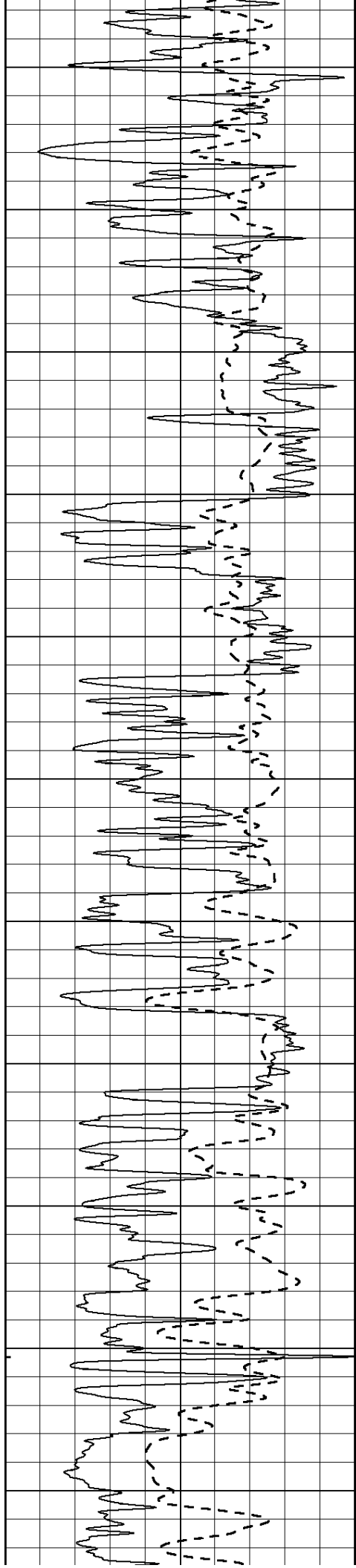
1950

2000

2050







2650

2700

2750

2800

2850

2900

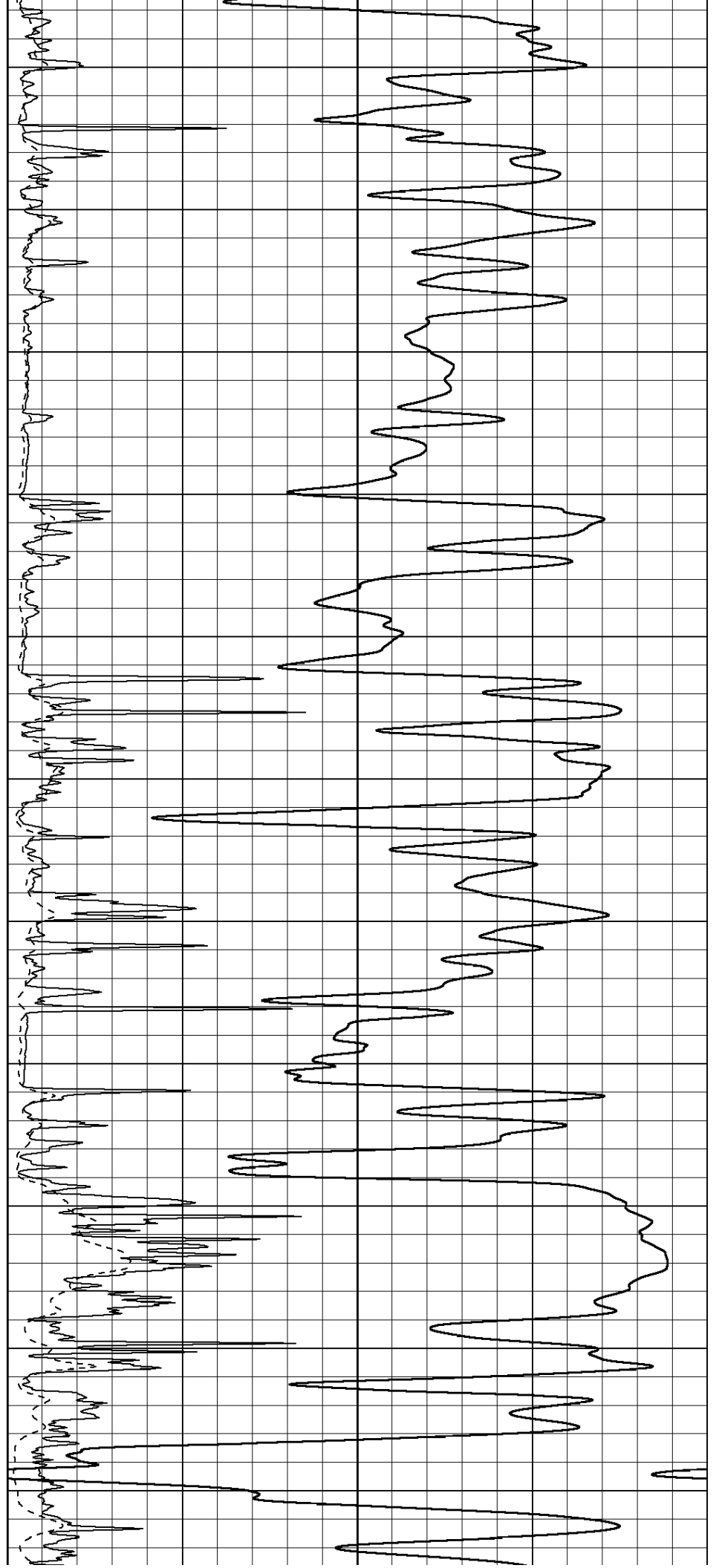
2950

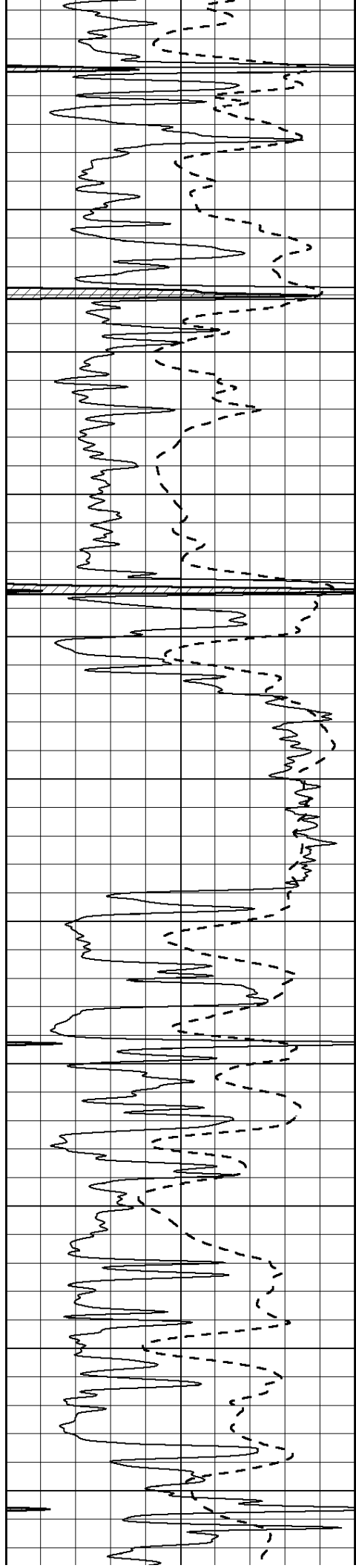
3000

3050

3100

3150





3200

3250

3300

3350

3400

3450

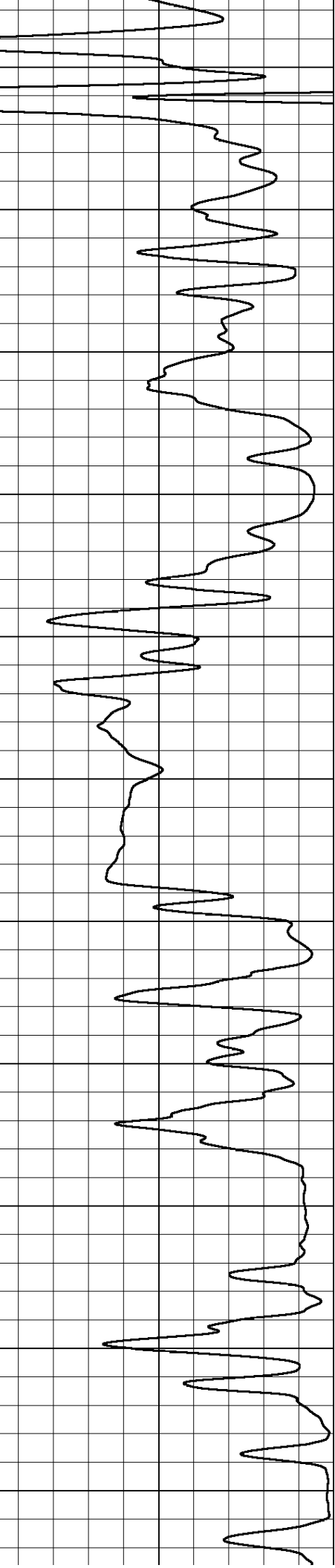
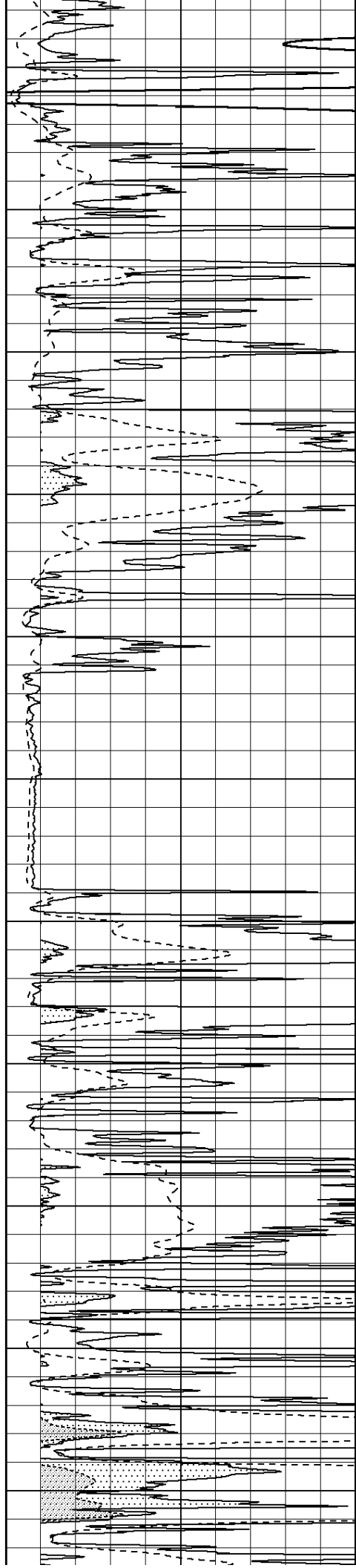
3500

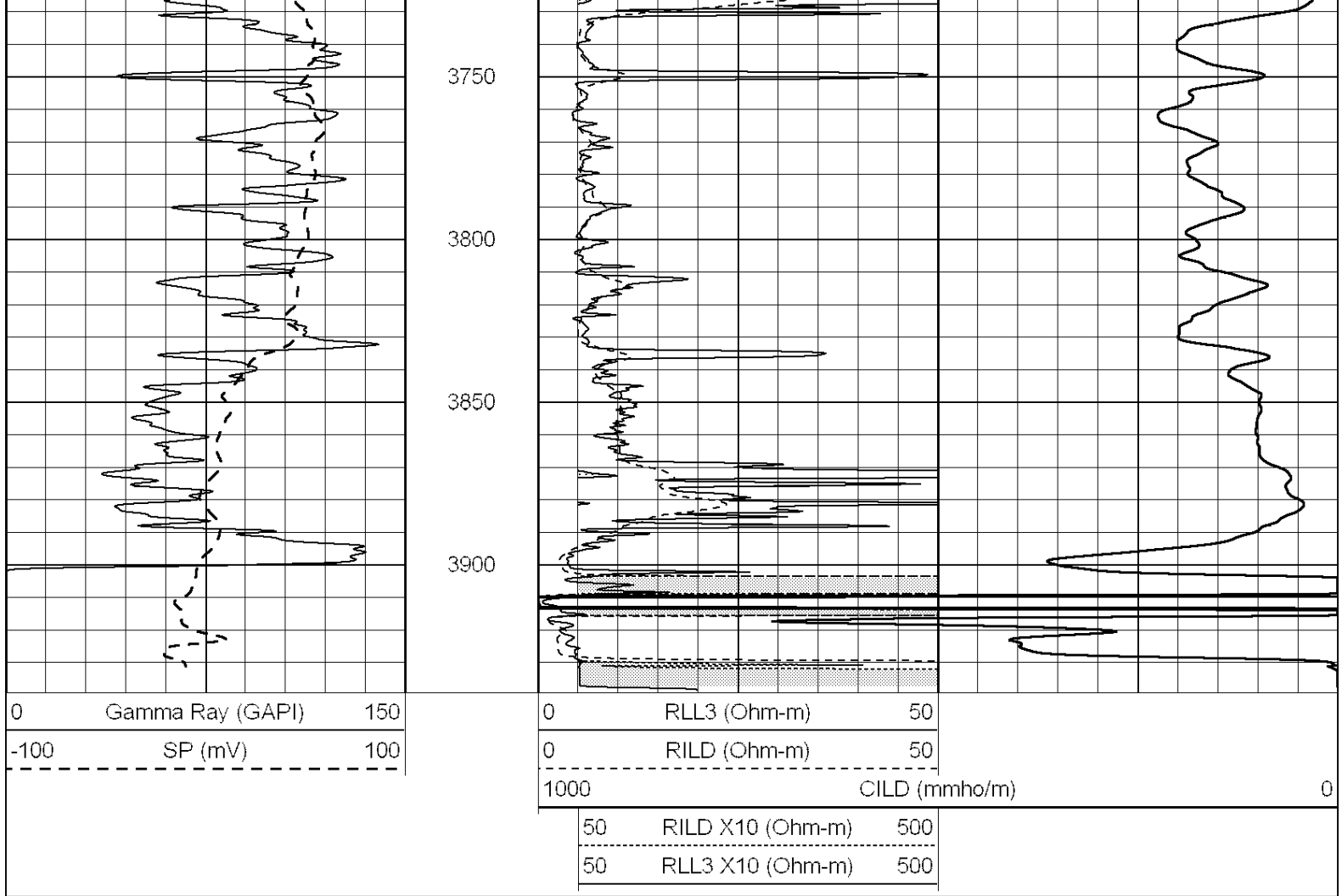
3550

3600

3650

3700



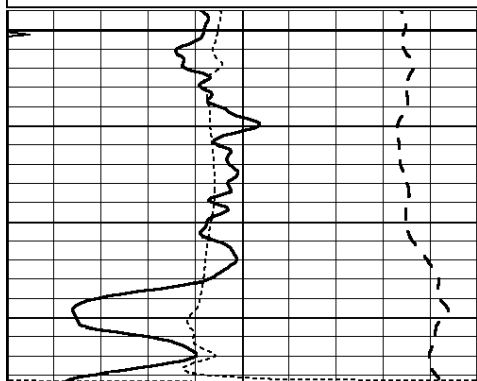


# ANHYDRITE

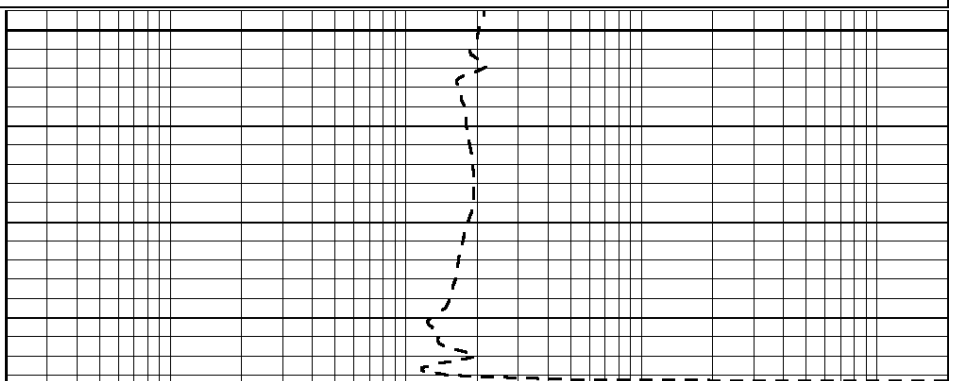
Database File: 24159ddn.db  
 Dataset Pathname: pass3.5  
 Presentation Format: \_dil  
 Dataset Creation: Thu May 22 16:06:15 2014 by Calc SOC 120430  
 Charted by: Depth in Feet scaled 1:240

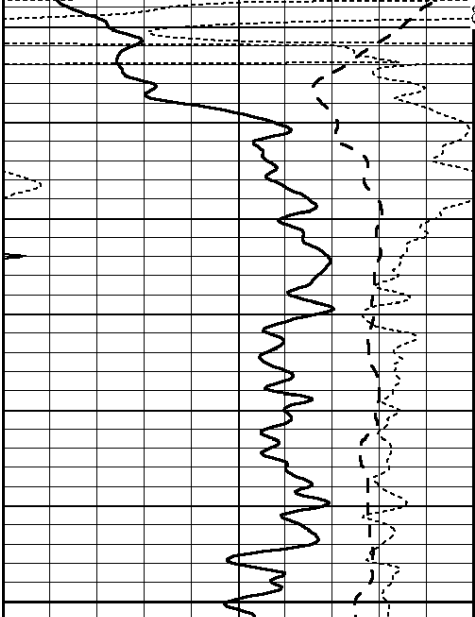
0	GAMMA RAY (GAPI)	150
-100	SP (mV)	100
-250	Rxo/Rt	50
0	MINMK	20

0.2	SHALLOW GUARD (Ohm-m)	2000
0.2	DEEP INDUCTION (Ohm-m)	2000
0.2	MEDIUM INDUCTION (Ohm-m)	2000

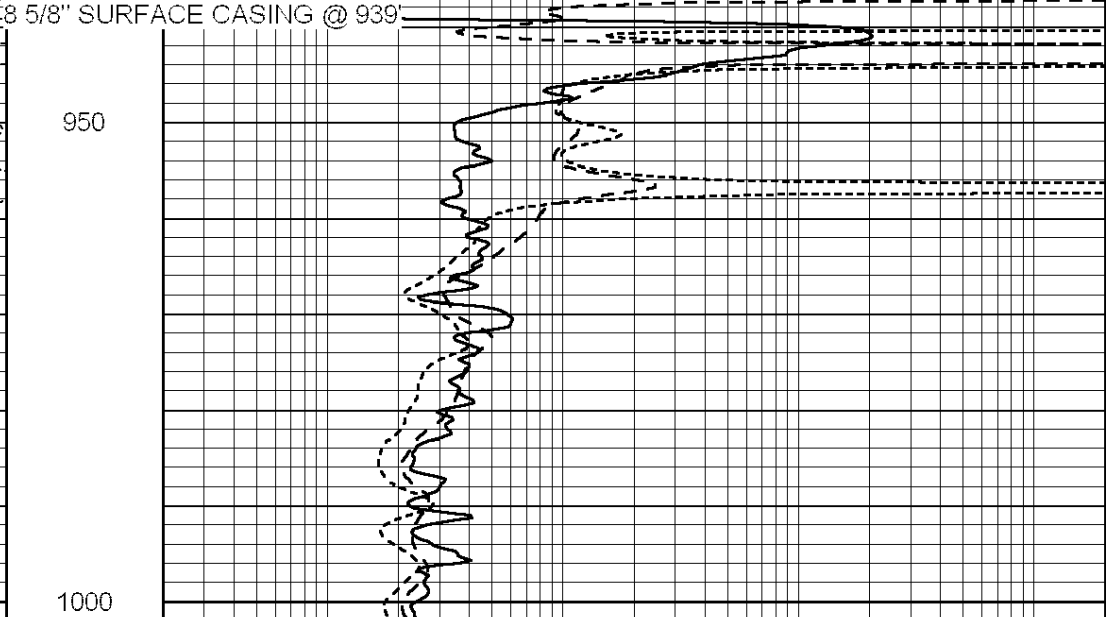


900





0	GAMMA RAY (GAPI)	150
-100	SP (mV)	100
-250	Rxo/Rt	50
0	MINMK	20



0.2	SHALLOW GUARD (Ohm-m)	2000
0.2	DEEP INDUCTION (Ohm-m)	2000
0.2	MEDIUM INDUCTION (Ohm-m)	2000

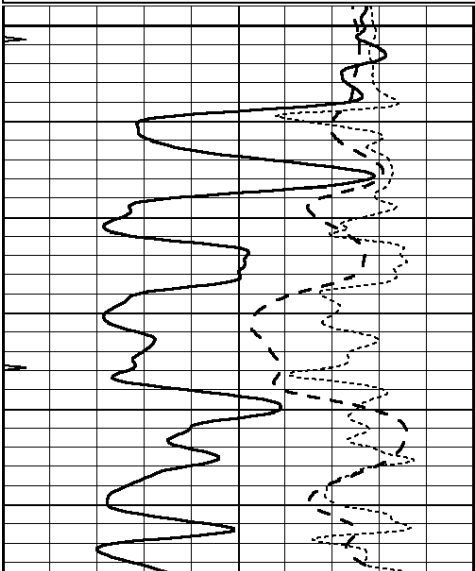


# MAIN SECTION

Database File: 24159ddn.db  
 Dataset Pathname: pass3.4  
 Presentation Format: \_dil  
 Dataset Creation: Thu May 22 15:45:46 2014 by Calc SOC 120430  
 Charted by: Depth in Feet scaled 1:240

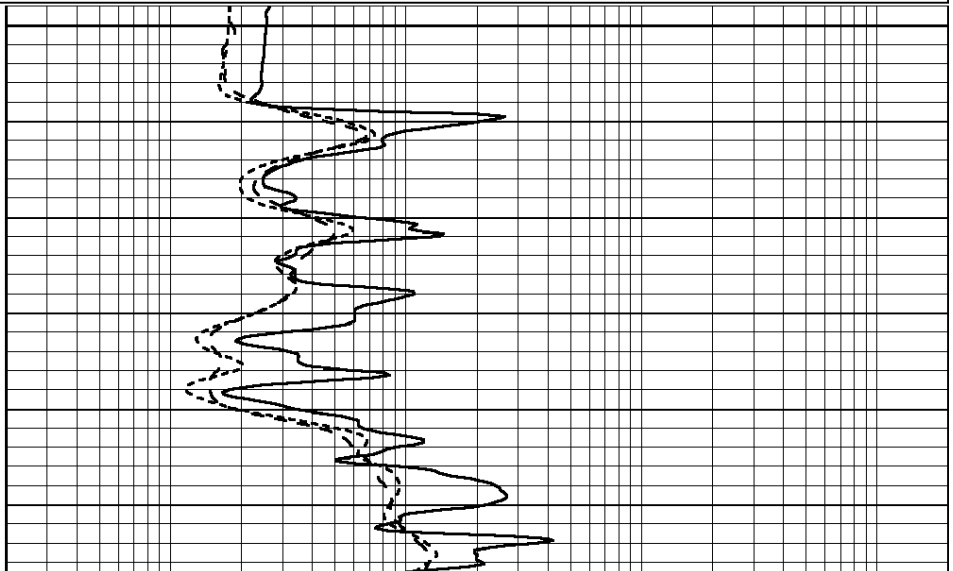
0	GAMMA RAY (GAPI)	150
-100	SP (mV)	100
-250	Rxo/Rt	50
0	MINMK	20

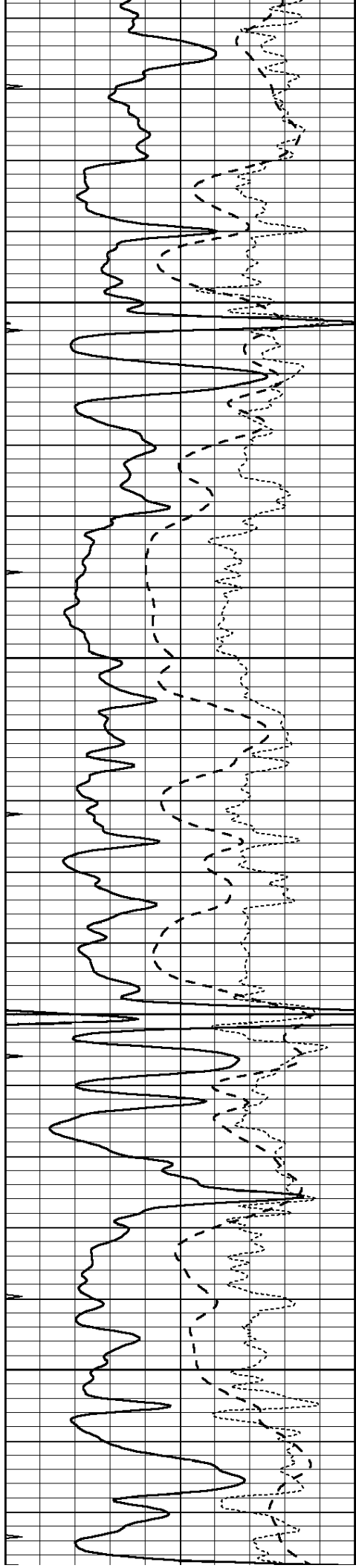
0.2	SHALLOW GUARD (Ohm-m)	2000
0.2	DEEP INDUCTION (Ohm-m)	2000
0.2	MEDIUM INDUCTION (Ohm-m)	2000



3000

3050



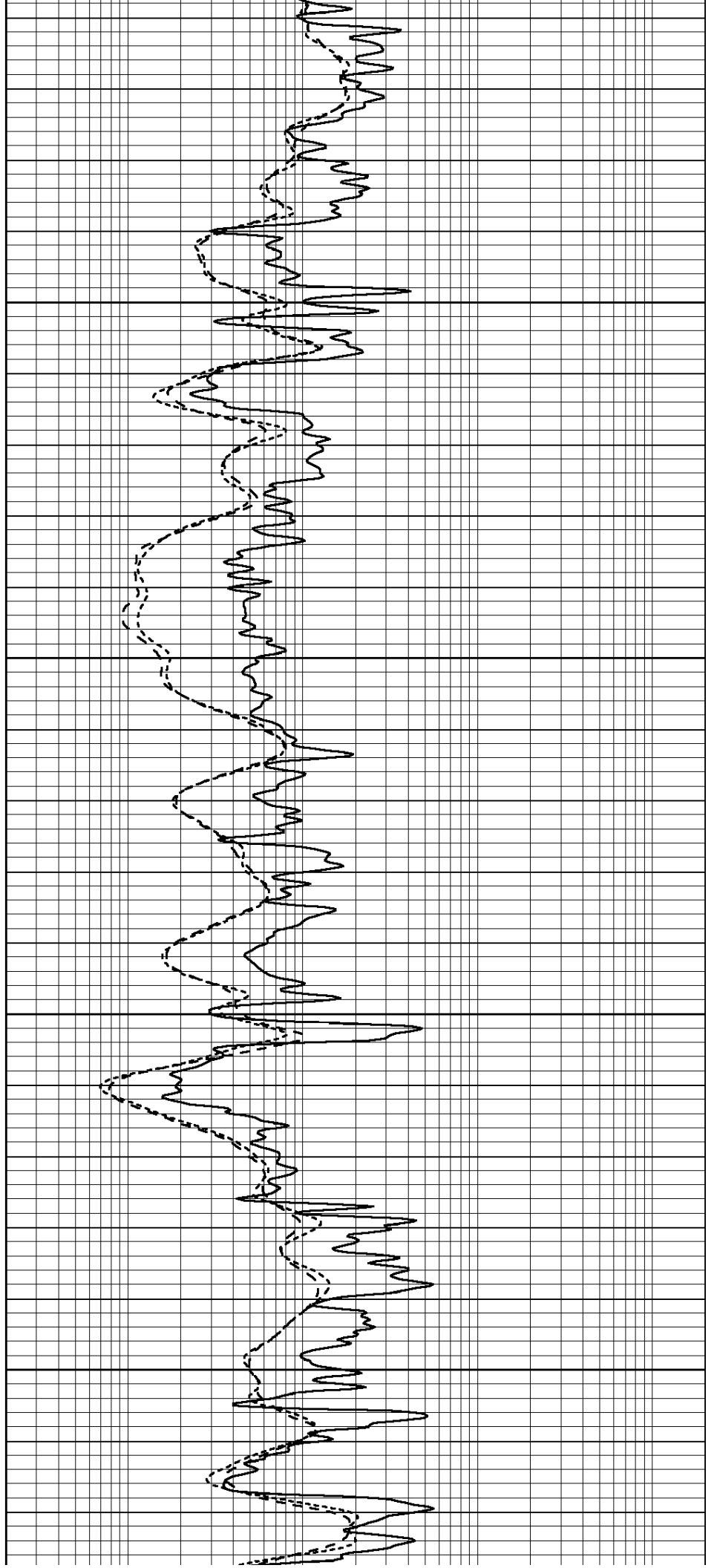


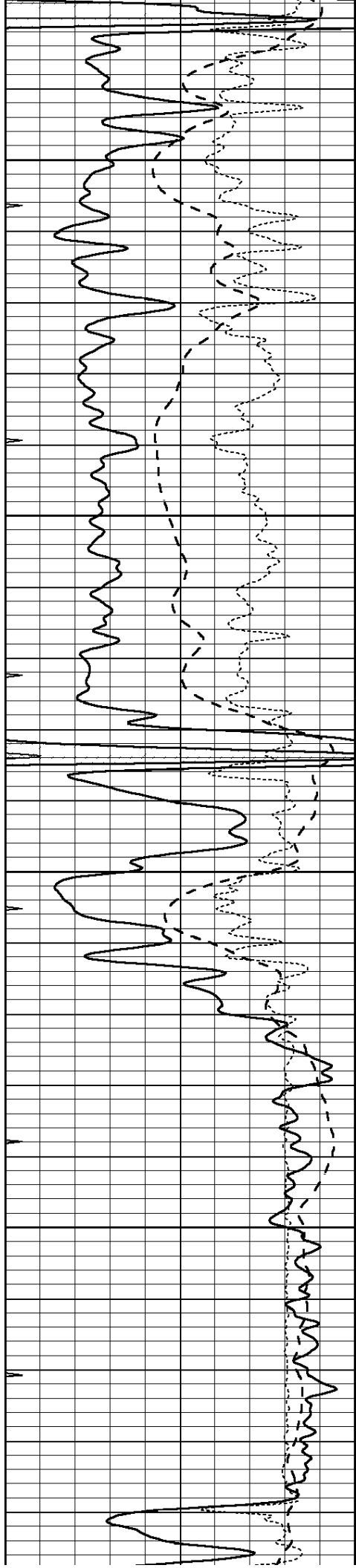
3100

3150

3200

3250



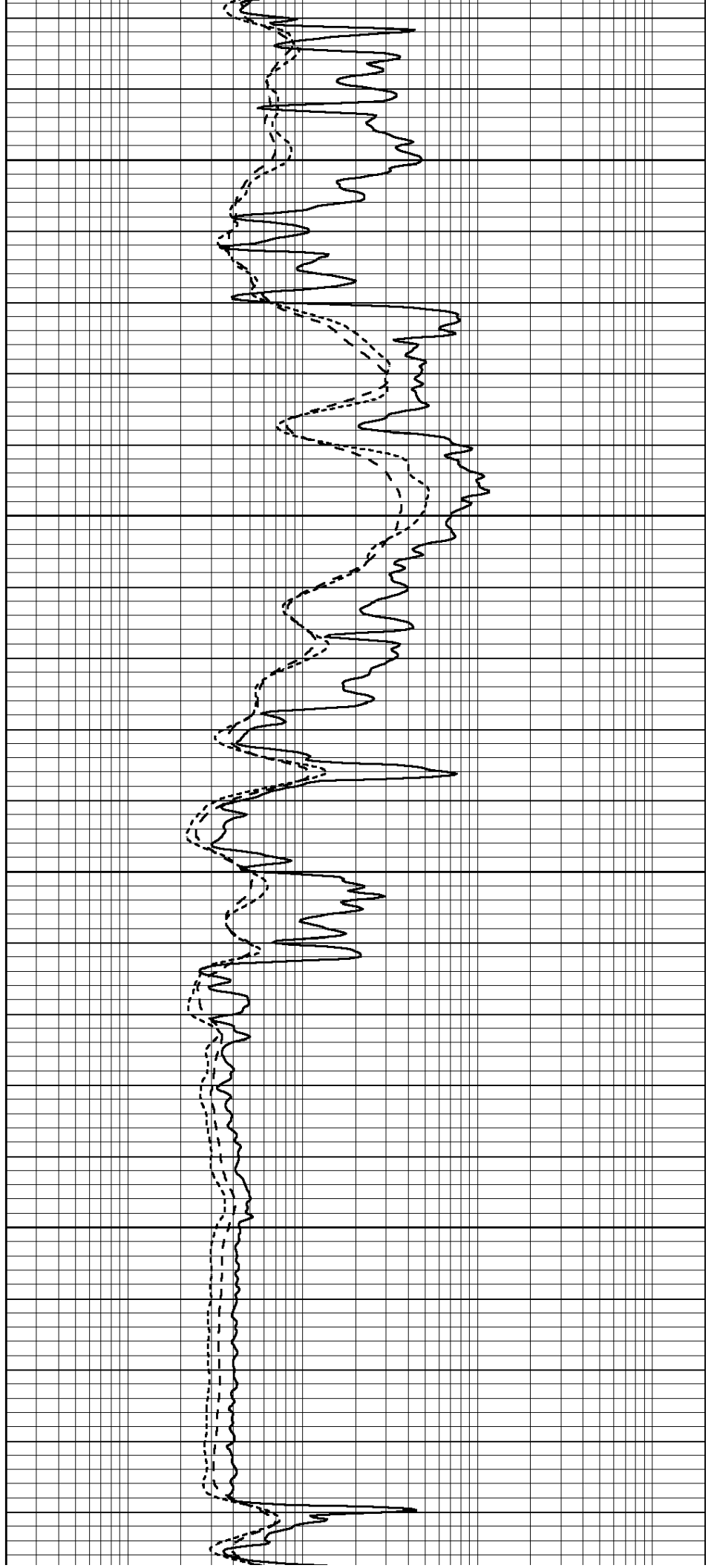


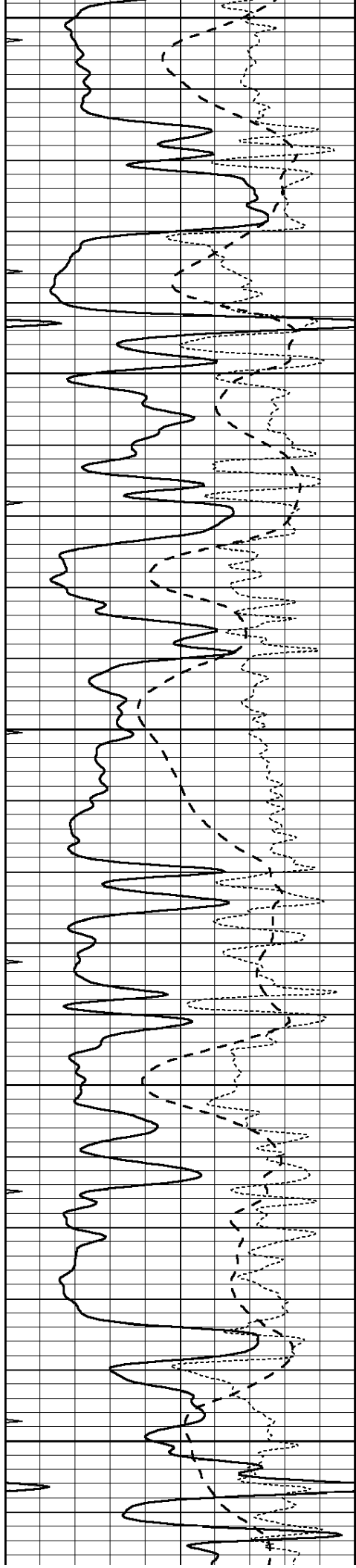
3300

3350

3400

3450





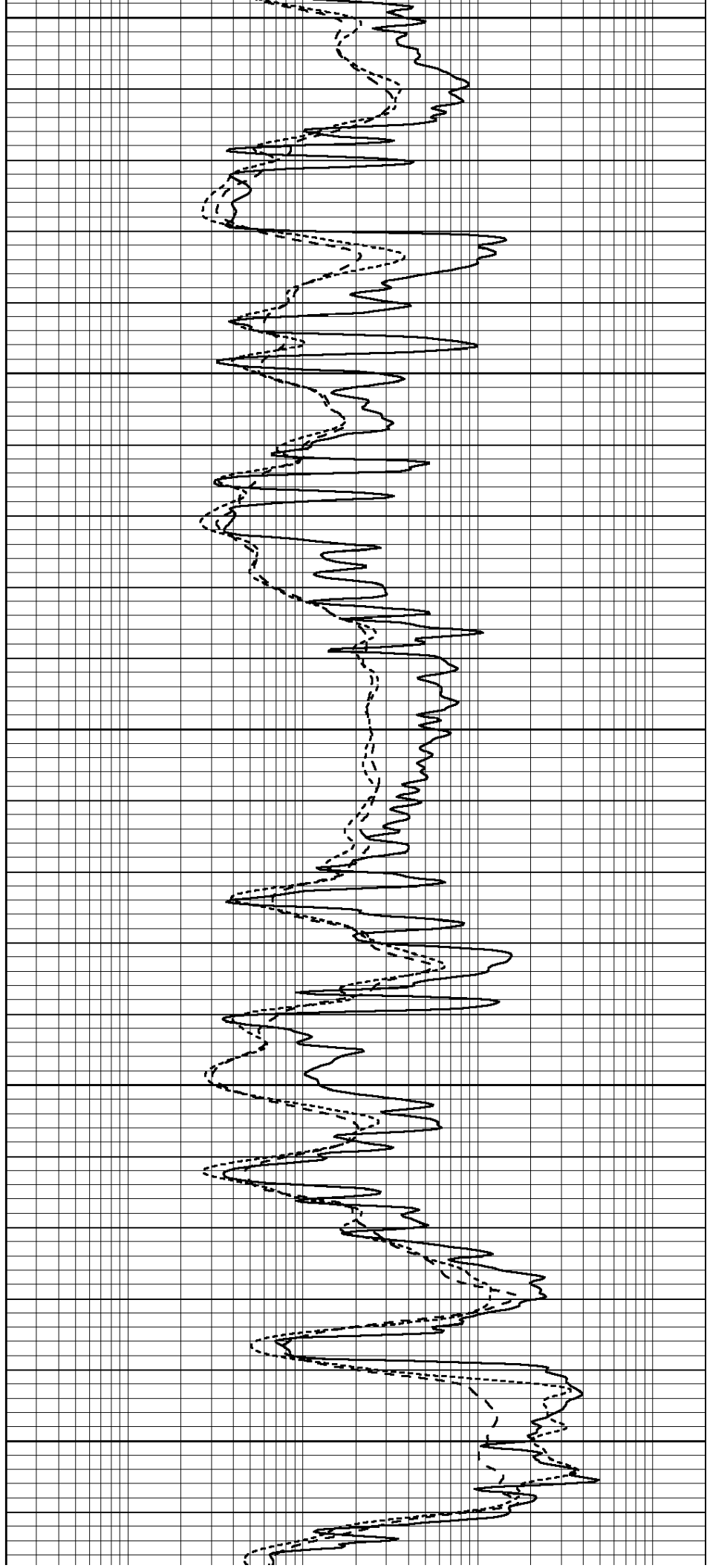
3500

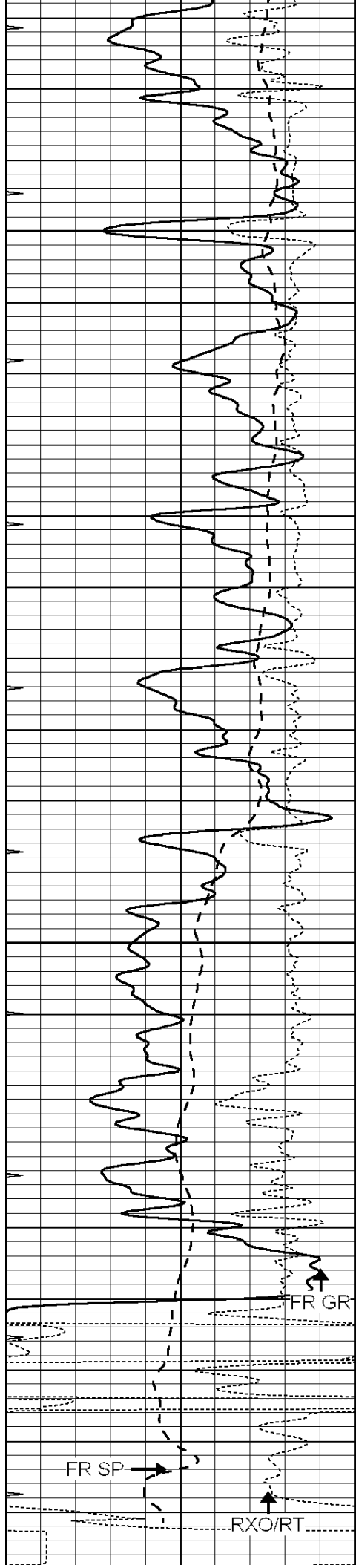
3550

3600

3650

3700





3750

3800

3850

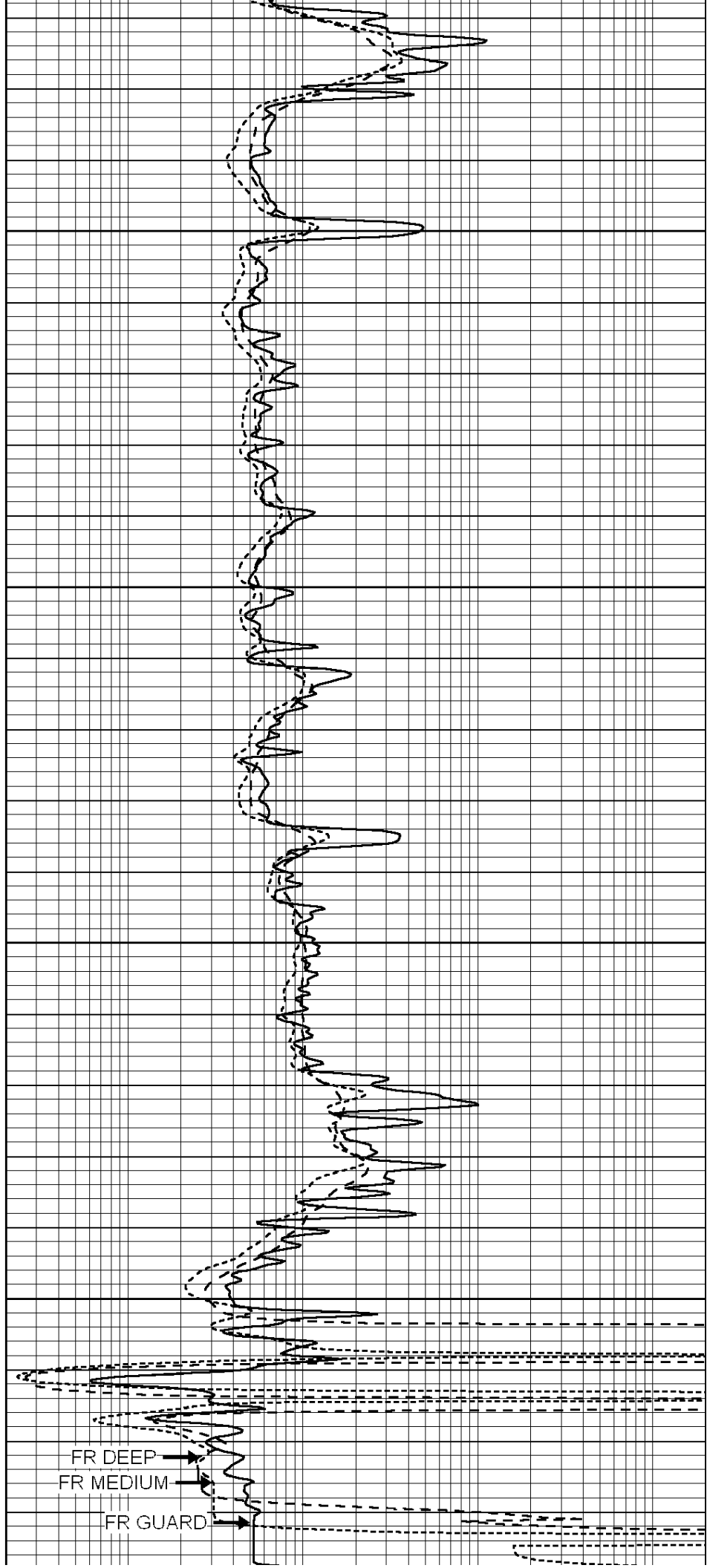
3900

FR SP

RXO/RT

FR GR

LTD 3934



FR DEEP

FR MEDIUM

FR GUARD

0	GAMMA RAY (GAPI)	150
-100	SP (mV)	100
-250	Rxo/Rt	50
0	MINMK	20

0.2	SHALLOW GUARD (Ohm-m)	2000
0.2	DEEP INDUCTION (Ohm-m)	2000
0.2	MEDIUM INDUCTION (Ohm-m)	2000



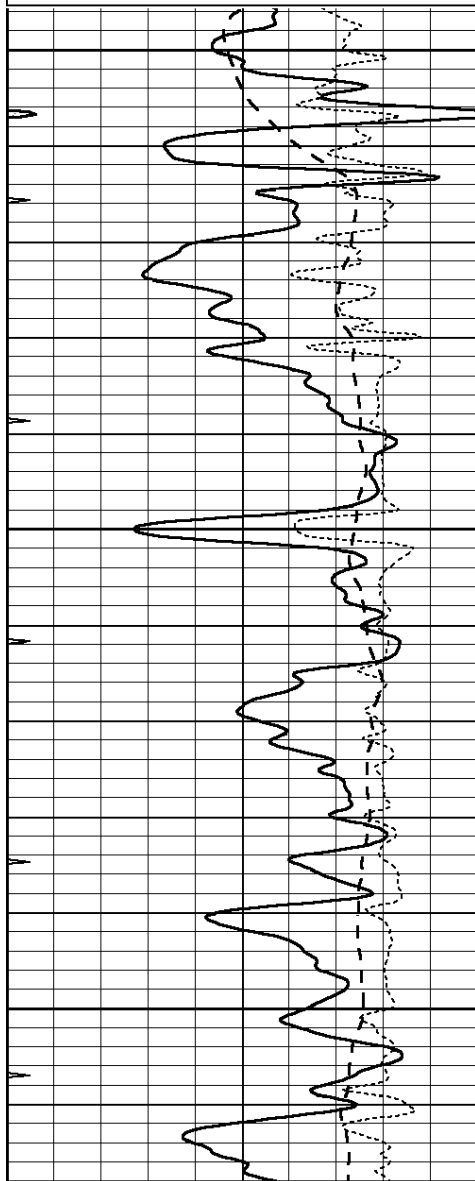
**COMPLETION  
& PRODUCTION  
SERVICES CO.**

# REPEAT SECTION

Database File: 24159ddn.db  
 Dataset Pathname: pass2.5  
 Presentation Format: \_dil  
 Dataset Creation: Thu May 22 15:48:43 2014 by Calc SOC 120430  
 Charted by: Depth in Feet scaled 1:240

0	GAMMA RAY (GAPI)	150
-100	SP (mV)	100
-250	Rxo/Rt	50
0	MINMK	20

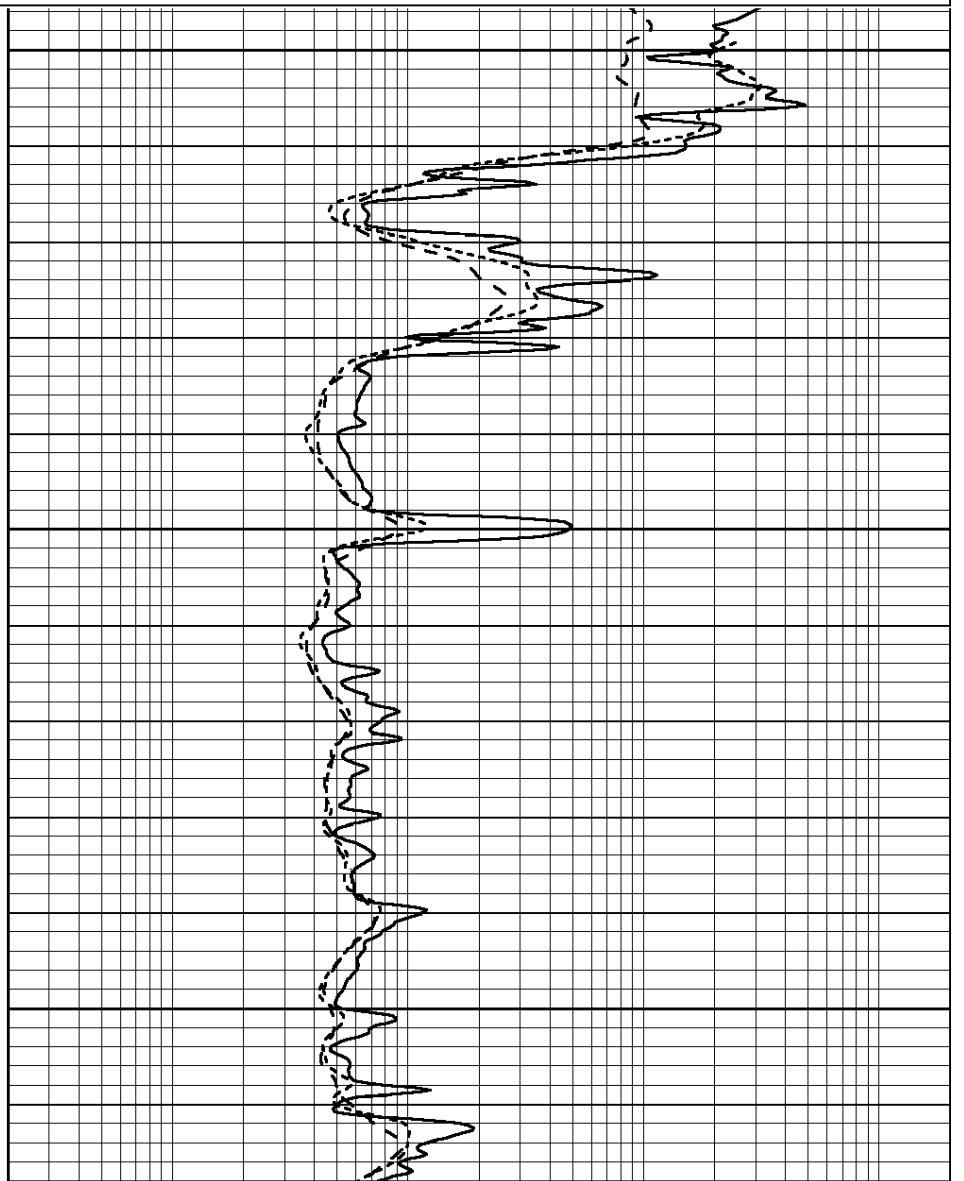
0.2	SHALLOW GUARD (Ohm-m)	2000
0.2	DEEP INDUCTION (Ohm-m)	2000
0.2	MEDIUM INDUCTION (Ohm-m)	2000

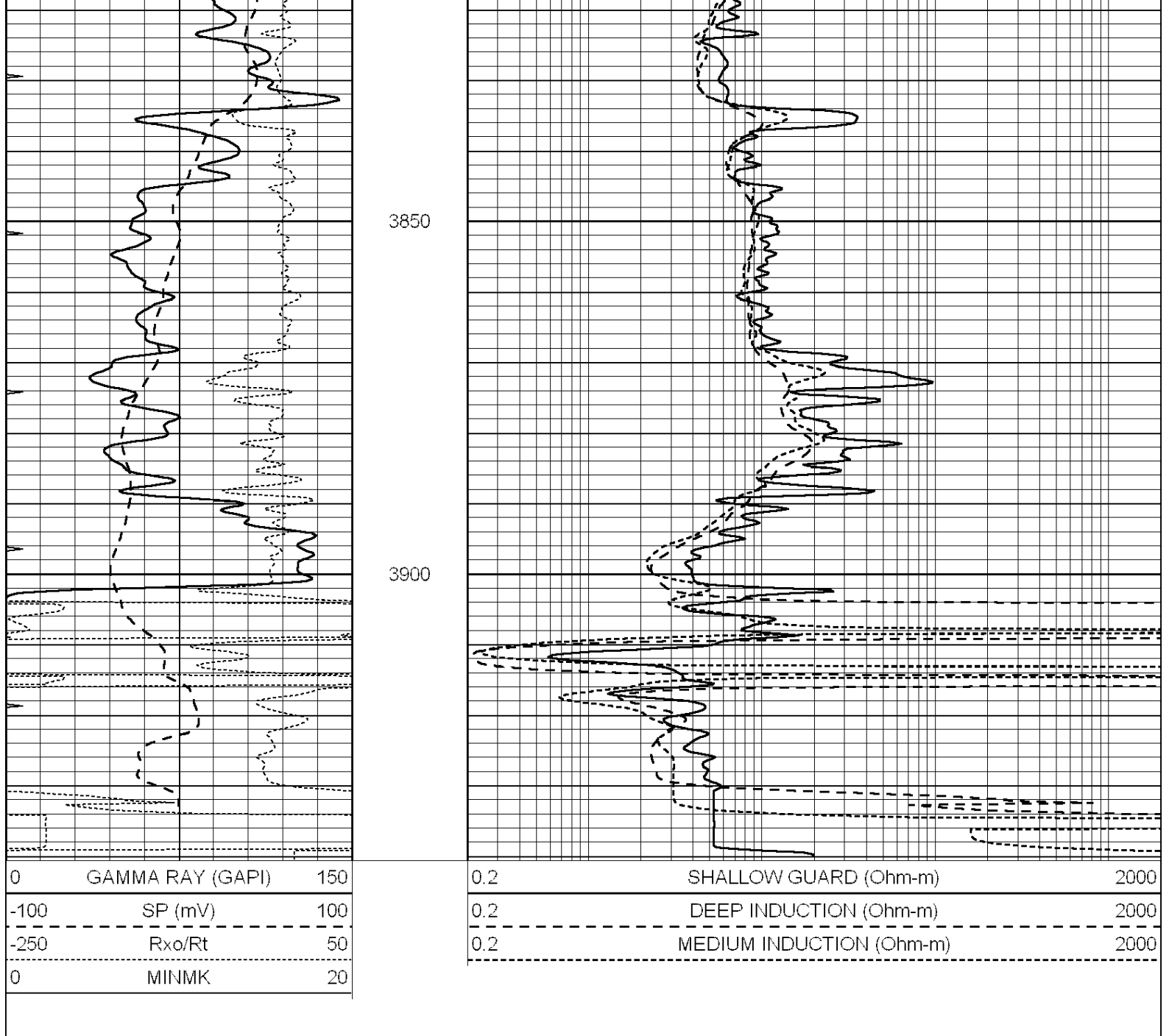


3700

3750

3800





### Calibration Report

Database File: 24159ddn.db  
 Dataset Pathname: pass3.4  
 Dataset Creation: Thu May 22 15:45:46 2014 by Calc SOC 120430

### Dual Induction Calibration Report

Serial-Model: PROBE9-DILG  
 Surface Cal Performed: Sat May 03 21:20:05 2014  
 Downhole Cal Performed: Mon Jul 28 12:02:56 2008  
 After Survey Verification Performed: Mon Jul 28 12:02:56 2008

#### Surface Calibration

Loop:	Readings			References			Results	
	Air	Loop		Air	Loop		m	b
Deep	-0.014	0.629	V	0.000	400.000	mmho/m	660.000	-12.000
Medium	0.039	0.728	V	0.000	464.000	mmho/m	650.000	-20.000
Internal:	Zero	Cal		Zero	Cal		m	b

Deep	0.011	0.610	V	0.000	400.000	mmho/m	667.135	-7.256
Medium	0.005	0.712	V	0.000	464.000	mmho/m	655.677	-3.102

Downhole Calibration								
	Readings			References			Results	
	Zero	Cal		Zero	Cal		m'	b'
Deep	0.000	0.000	mmho/m	14.508	388.384	mmho/m	1.000	0.000
Medium	0.000	0.000	mmho/m	166.367	504.400	mmho/m	1.000	0.000
LL3		7.500	V		1400.000	Ohm-m		
		0.000	V		20.000	Ohm-m		
		-7.200	V		4000.000	mmho-m		

After Survey Verification								
	Readings			Targets			Results	
	Zero	Cal		Zero	Cal		m'	b'
Deep	0.000	0.000	mmho/m	0.000	0.000	mmho/m	0.000	0.000
Medium	0.000	0.000	mmho/m	0.000	0.000	mmho/m	0.000	0.000
LL3		1.000	Ohm-m		1.000	Ohm-m		
		0.000	Ohm-m		0.000	Ohm-m		
		1.000	mmho-m		1.000	mmho-m		

Litho Density Calibration Report  
Serial: 003N    Model: PRB

Master Calibration					Performed Tue Sep 08 14:14:44 2009			
	Background	Magnesium	Aluminum	Sandstone				
Window 1	2042.6	12312.8	4225.8	13758.4				cps
Window 2	1855.8	10134.7	3624.2	11113.1				cps
Window 3	1639.4	6760.2	2716.3	7260.3				cps
Window 4	466.4	469.2	466.1	476.5				cps
Long Space	0.0	8278.9	1768.4	9257.4				cps
Short Space	2.2	2377.3	1544.1	2574.2				cps
Rho		1.7100	2.5900	1.3800				g/cc
Pe		0.0000	2.5700	1.5500				
Rib Angle	: 44.4	Rib Slope	: 0.979	Density/Spine Ratio				: 0.549
Spine Angle	: 74.4	Spine Slope	: 3.577	Spine Intercept				: -18.8

Before Survey Verification					Performed Wed Dec 31 18:00:00 1969			
	Background	Magnesium	Aluminum	Sandstone				
Window 1	0.0	0.0	0.0	0.0				cps
Window 2	0.0	0.0	0.0	0.0				cps
Window 3	0.0	0.0	0.0	0.0				cps
Window 4	0.0	0.0	0.0	0.0				cps
Long Space	0.0	0.0	0.0	0.0				cps
Short Space	0.0	0.0	0.0	0.0				cps
Measured Rho		0.0000	0.0000	0.0000				g/cc
Measured Correction		0.0000	0.0000	0.0000				g/cc
Measured Pe			0.0000	0.0000				

After Survey Verification					Performed Wed Dec 31 18:00:00 1969			
	Background	Magnesium	Aluminum	Sandstone				
Window 1	0.0	0.0	0.0	0.0				cps
Window 2	0.0	0.0	0.0	0.0				cps
Window 3	0.0	0.0	0.0	0.0				cps
Window 4	0.0	0.0	0.0	0.0				cps
Long Space	0.0	0.0	0.0	0.0				cps

Long Space	0.0	0.0	0.0	0.0	cps
Short Space	0.0	0.0	0.0	0.0	cps
Measured Rho		0.0000	0.0000	0.0000	g/cc
Measured Correction		0.0000	0.0000	0.0000	g/cc
Measured Pe			0.0000	0.0000	

Compensated Neutron Calibration Report

Serial Number: 070808  
Tool Model: Probe

PRE-SURVEY VERIFICATION

Detector	Readings	Measured	Target
Short Space	cps		
Long Space	cps	pu	pu

POST-SURVEY VERIFICATION

Detector	Readings	Measured	Target
Short Space	cps		
Long Space	cps	pu	pu

Gamma Ray Calibration Report

Serial Number: 070558  
Tool Model: OPEN\_GR  
Performed: Thu May 15 06:08:02 2014

Calibrator Value: 1.0 GAPI

Background Reading: 0.0 cps  
Calibrator Reading: 1.0 cps

Sensitivity: 0.2800 GAPI/cps