



**COMPLETION
& PRODUCTION
SERVICES CO.**

**MICRO
LOG**

Company CHARTER ENERGY, INC.
Well BLACKWELL "A" #1
Field HURRAY
County PAWNEE
State KANSAS

Company CHARTER ENERGY, INC.
Well BLACKWELL "A" #1
Field HURRAY
County PAWNEE State KANSAS

Location: API # : 15-145-21765-0000
2210' FNL & 330' FWL
N/2 - SW - SW - NW
SEC 2 TWP 22S RGE 15W
Permanent Datum GROUND LEVEL Elevation 1971
Log Measured From KELLY BUSHING 6' A.G.L.
Drilling Measured From KELLY BUSHING
Other Services
CDL/CNL
DIL
Elevation
K.B. 1977
D.F. 1975
G.L. 1971

Date	5/22/14
Run Number	TWO
Depth Driller	3945
Depth Logger	3934
Bottom Logged Interval	3932
Top Log Interval	3000
Casing Driller	8 5/8"@938'
Casing Logger	939
Bit Size	7 7/8"
Type Fluid in Hole	CHEMICAL MUD
Density / Viscosity	9.0/66
pH / Fluid Loss	10.0/9.6
Source of Sample	FLOWLINE
Rim @ Meas. Temp	.600@82F
Rmf @ Meas. Temp	.450@82F
Rmc @ Meas. Temp	.720@82F
Source of Rmf / Rmc	MEASUREMENT
Rim @ BHT	.424@116F
Time Circulation Stopped	10 HOURS
Time Logger on Bottom	2:15 P.M.
Maximum Recorded Temperature	116F
Equipment Number	4854
Location	HAYS, KANSAS
Recorded By	JEFF LUEBBERS
Witnessed By	KURT TALBOTT

<<< Fold Here >>>

All interpretations are opinions based on inferences from electrical or other measurements and we cannot and do not guarantee the accuracy or correctness of any interpretation, and we shall not, except in the case of gross or willful negligence on our part, be liable or responsible for any loss, costs, damages, or expenses incurred or sustained by anyone resulting from any interpretation made by any of our officers, agents or employees. These interpretations are also subject to our general terms and conditions set out in our current Price Schedule.

Comments

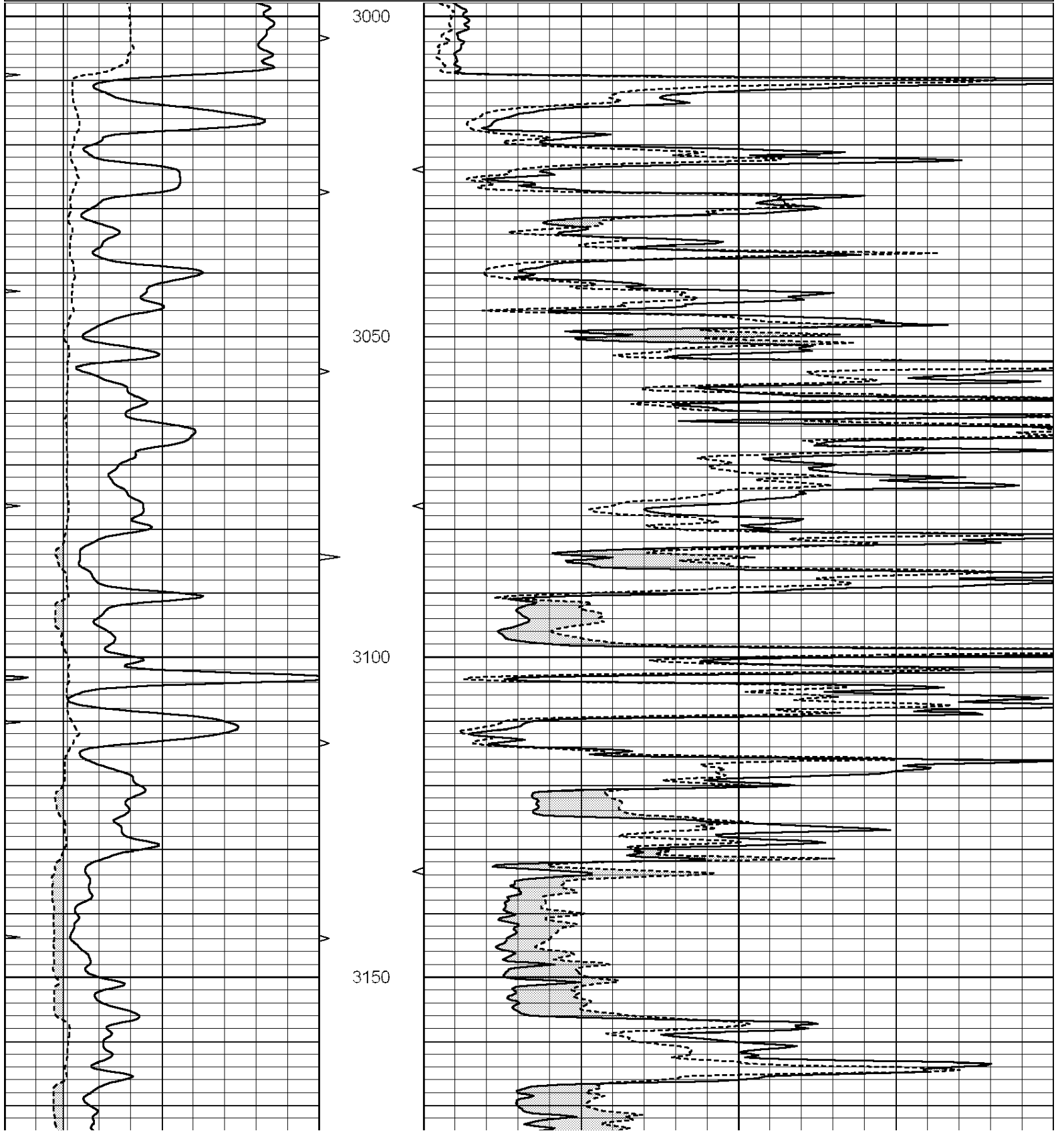
THANK YOU FOR USING "NABORS" HAYS, KANSAS (785) 628-6395
DIRECTIONS
LARNED, KS., E. ON K-19 TO "30TH AVE.", 1/2N., E. INTO

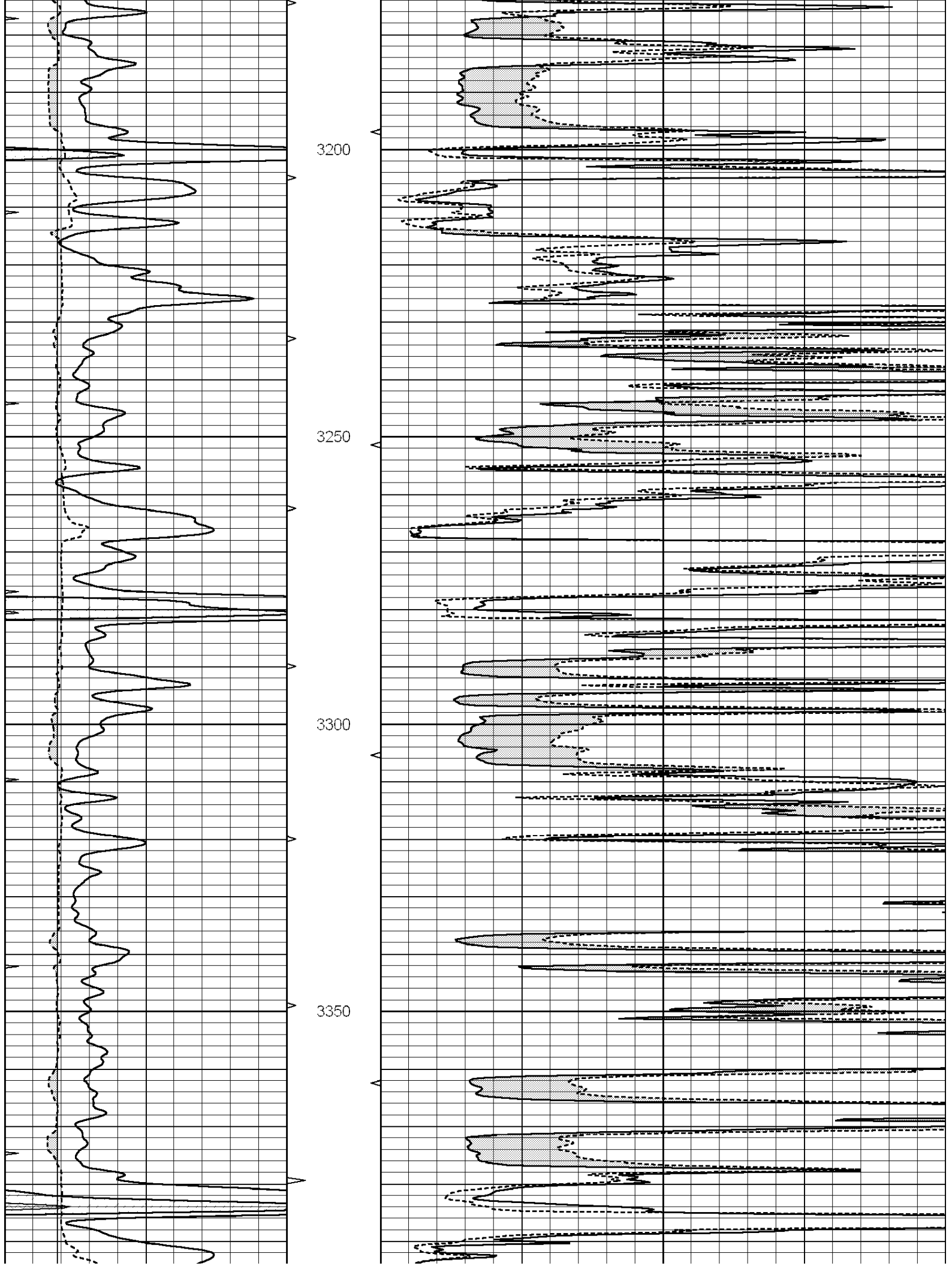


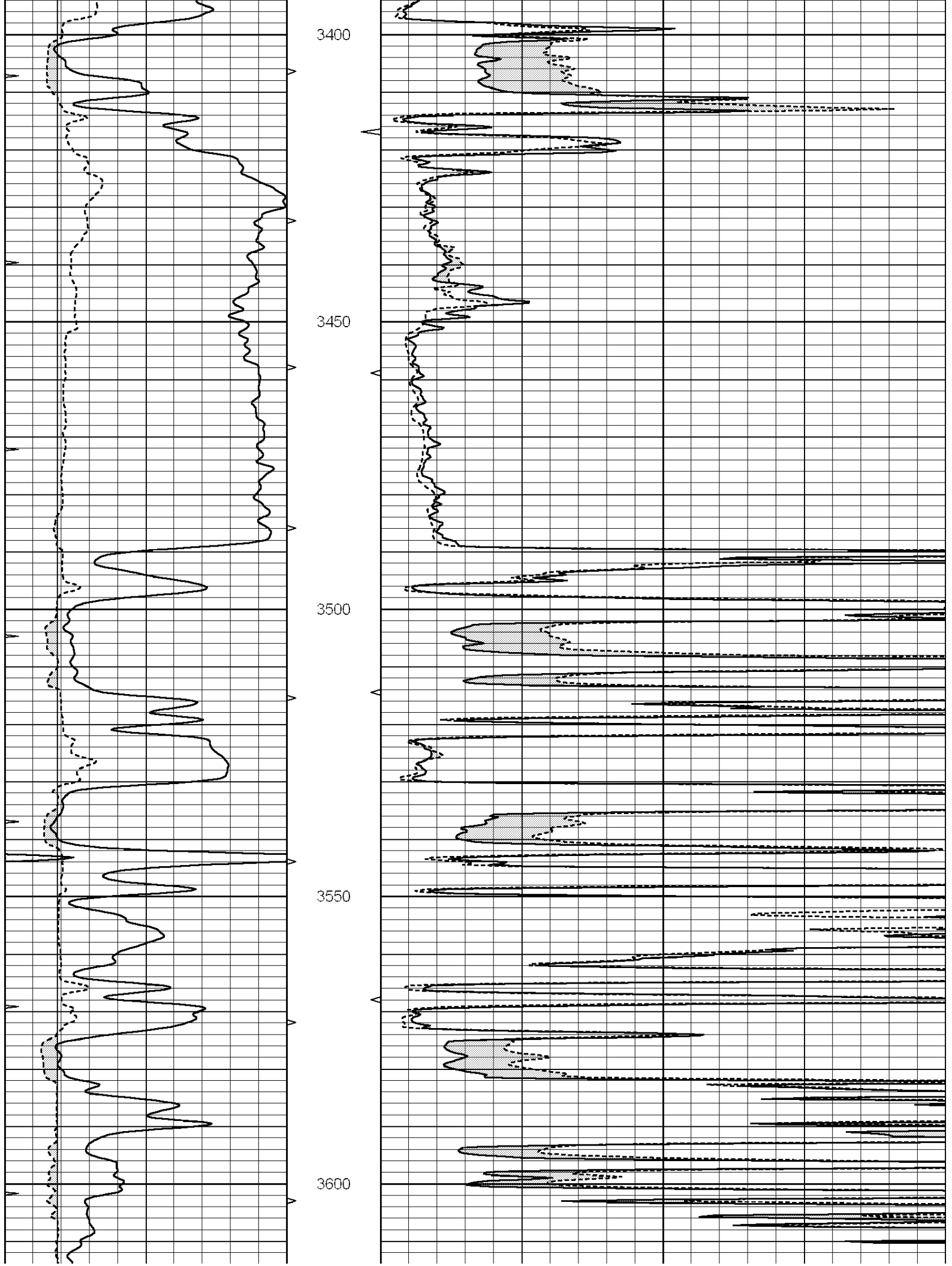
MAIN SECTION

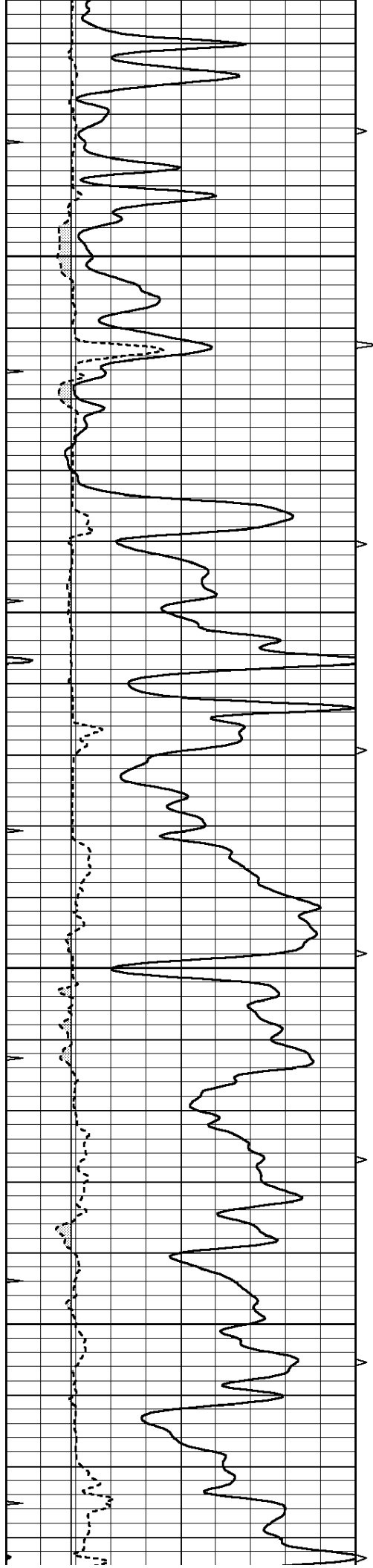
Database File: 24159ddn.db
 Dataset Pathname: pass7.11
 Presentation Format: micro
 Dataset Creation: Thu May 22 17:21:18 2014
 Charted by: Depth in Feet scaled 1:240

0	GAMMA RAY (GAPI)	150	ABHV	0	MEL1.5 (Ohm-m)	40
6	CALIPER (in)	16	10 (ft3)	0	MEL2.0 (Ohm-m)	40
0	MINMK	20	TBHV			
			0 (ft3)	10		







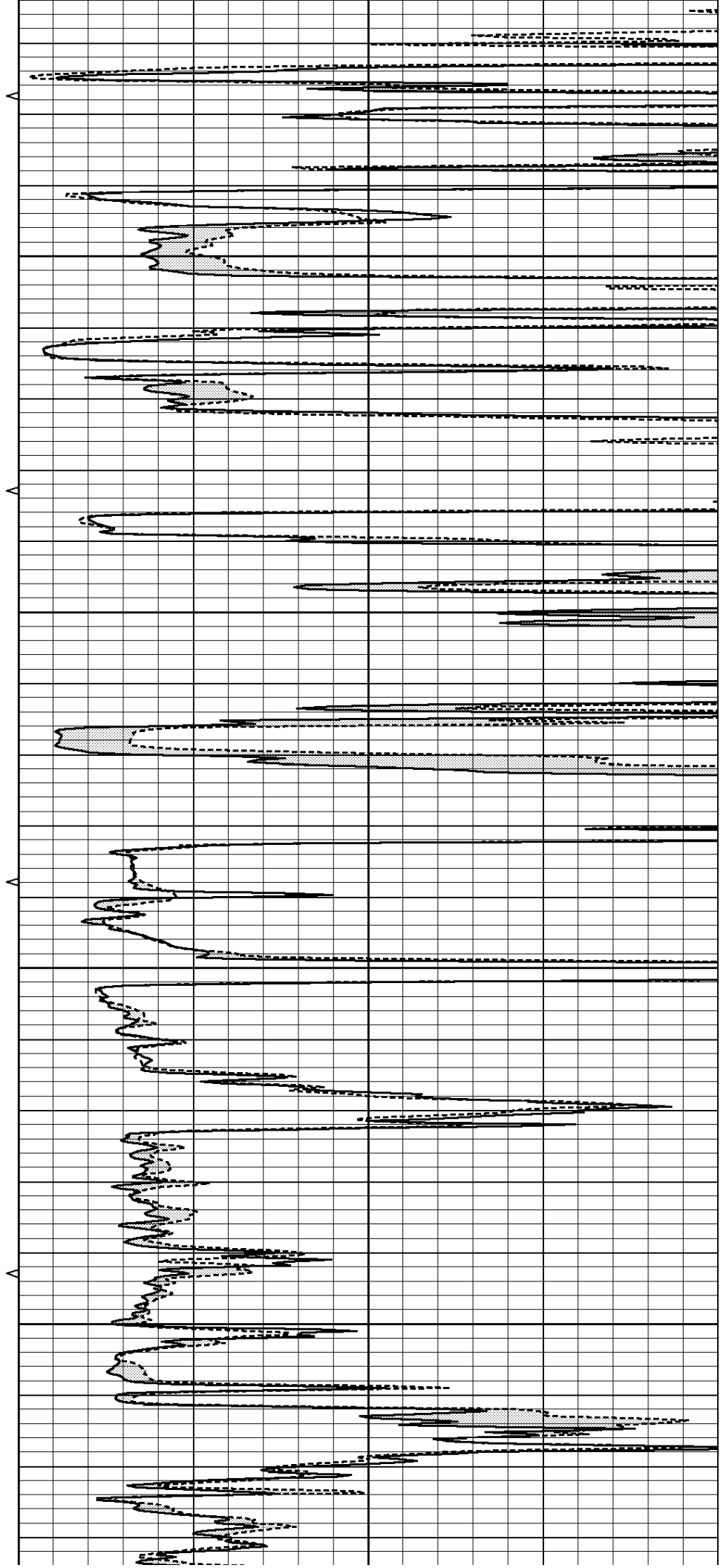


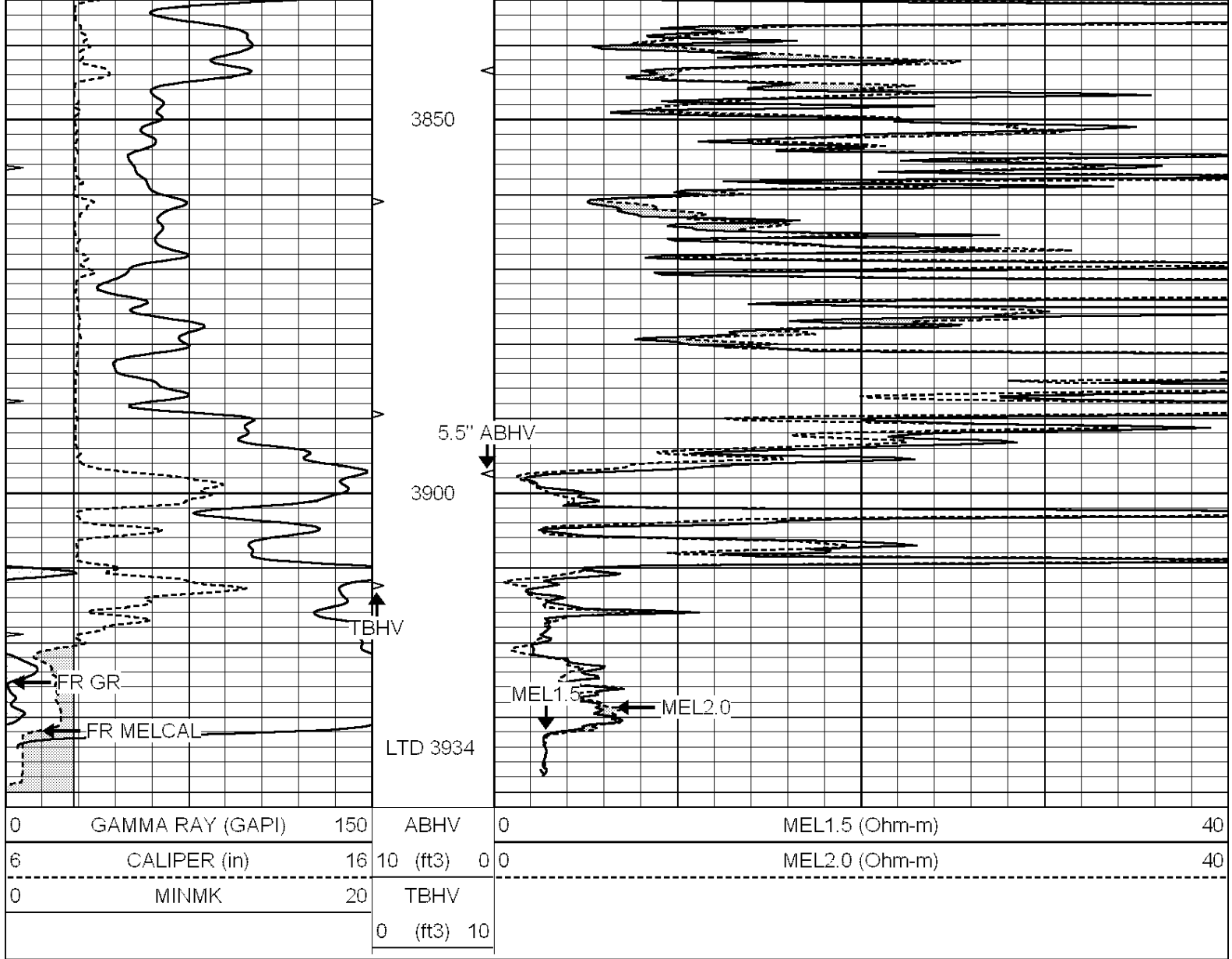
3650

3700

3750

3800



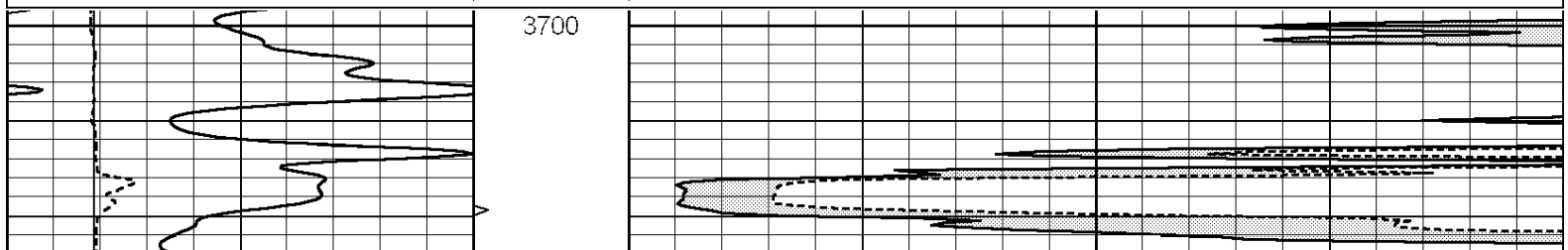


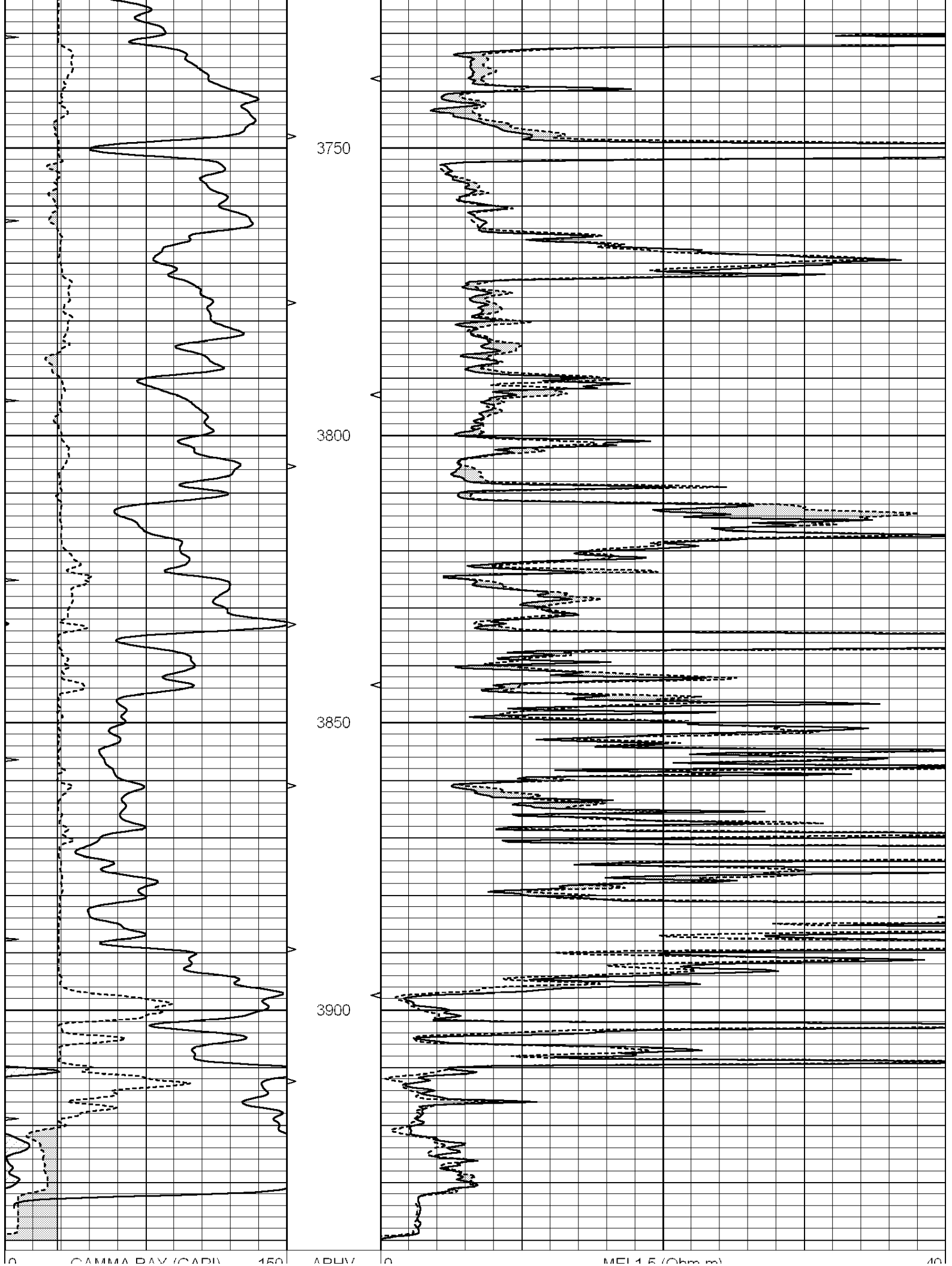
**COMPLETION
& PRODUCTION
SERVICES CO.**

REPEAT SECTION

Database File: 24159ddn.db
 Dataset Pathname: pass6.7
 Presentation Format: micro
 Dataset Creation: Thu May 22 17:25:26 2014 by Calc SOC 120430
 Charted by: Depth in Feet scaled 1:240

0	GAMMA RAY (GAPI)	150	ABHV	0	MEL1.5 (Ohm-m)	40
6	CALIPER (in)	16	10 (ft3)	0 0	MEL2.0 (Ohm-m)	40
0	MINMK	20	TBHV			
			0 (ft3)	10		





0	GAMMA RAY (GAPI)	150	ADIV	0	MEL2.0 (Ohm-m)	40
6	CALIPER (in)	16	10 (ft3)	0		40
0	MINMK	20	TBHV			
			0 (ft3)	10		

Calibration Report

Database File: 24159ddn.db
Dataset Pathname: pass7.11
Dataset Creation: Thu May 22 17:21:18 2014

MICRO Calibration Report

Serial Number:	070910	
Tool Model:	ProbeN	
Performed:	Mon Apr 28 07:45:19 2014	
Caliper Calibration:	Gain=4.150	Offset=1.460
	Low Cal	High Cal
References	7.900	15.000
Readings	1.552	3.263
1.5" Calibration:	Gain=105.000	Offset=0.500
	Low Cal	High Cal
References	0.000	20.000
Readings	0.001	1.229
2" Calibration:	Gain=95.000	Offset=-2.800
	Low Cal	High Cal
References	0.000	20.000
Readings	0.004	1.057

Gamma Ray Calibration Report

Serial Number:	070559	
Tool Model:	OPEN_GR	
Performed:	Thu May 15 09:17:20 2014	
Calibrator Value:	1.0	GAPI
Background Reading:	0.0	cps
Calibrator Reading:	1.0	cps
Sensitivity:	0.2200	GAPI/cps