



**COMPLETION
& PRODUCTION
SERVICES CO.**

**MICRO
LOG**

Company D & J OIL CO. INC.
Well WICKED WITCH #2
Field H-L
County NESS
State KANSAS

Company D & J OIL COMPANY, INC.
Well WICKED WITCH #2
Field H-L
County NESS
State KANSAS

Location: 1980' FSL & 330' FWL
W/2 - NW - SW
API # : 15-135-25694-0000
SEC 1 TWP 20S RGE 24W
Permanent Datum GROUND LEVEL Elevation 2322
Log Measured From KELLY BUSHING 5' A.G.L.
Drilling Measured From KELLY BUSHING
Other Services
CDL/CNL
PE/DIL
Elevation
K.B. 2327
D.F. 2325
G.L. 2322

Date	11/29/213
Run Number	TWO
Depth Driller	4520
Depth Logger	4521
Bottom Logged Interval	4519
Top Log Interval	3600
Casing Driller	8 5/8"@220'
Casing Logger	218'
Bit Size	7 7/8"
Type Fluid in Hole	CHEMICAL MUD
Density / Viscosity	9.4/59
pH / Fluid Loss	10.0/9.6
Source of Sample	FLOWLINE
Rim @ Meas. Temp	1.10@70F
Rmf @ Meas. Temp	0.83@70F
Rmc @ Meas. Temp	1.32@70F
Source of Rmf / Rmc	MEASUREMENT
Rim @ BHT	0.64@121F
Time Circulation Stopped	2 HOURS
Time Logger on Bottom	
Maximum Recorded Temperature	121F
Equipment Number	4854
Location	HAYS, KANSAS
Recorded By	JEFF GRONEMEG
Witnessed By	JOHN GOLDSMITH

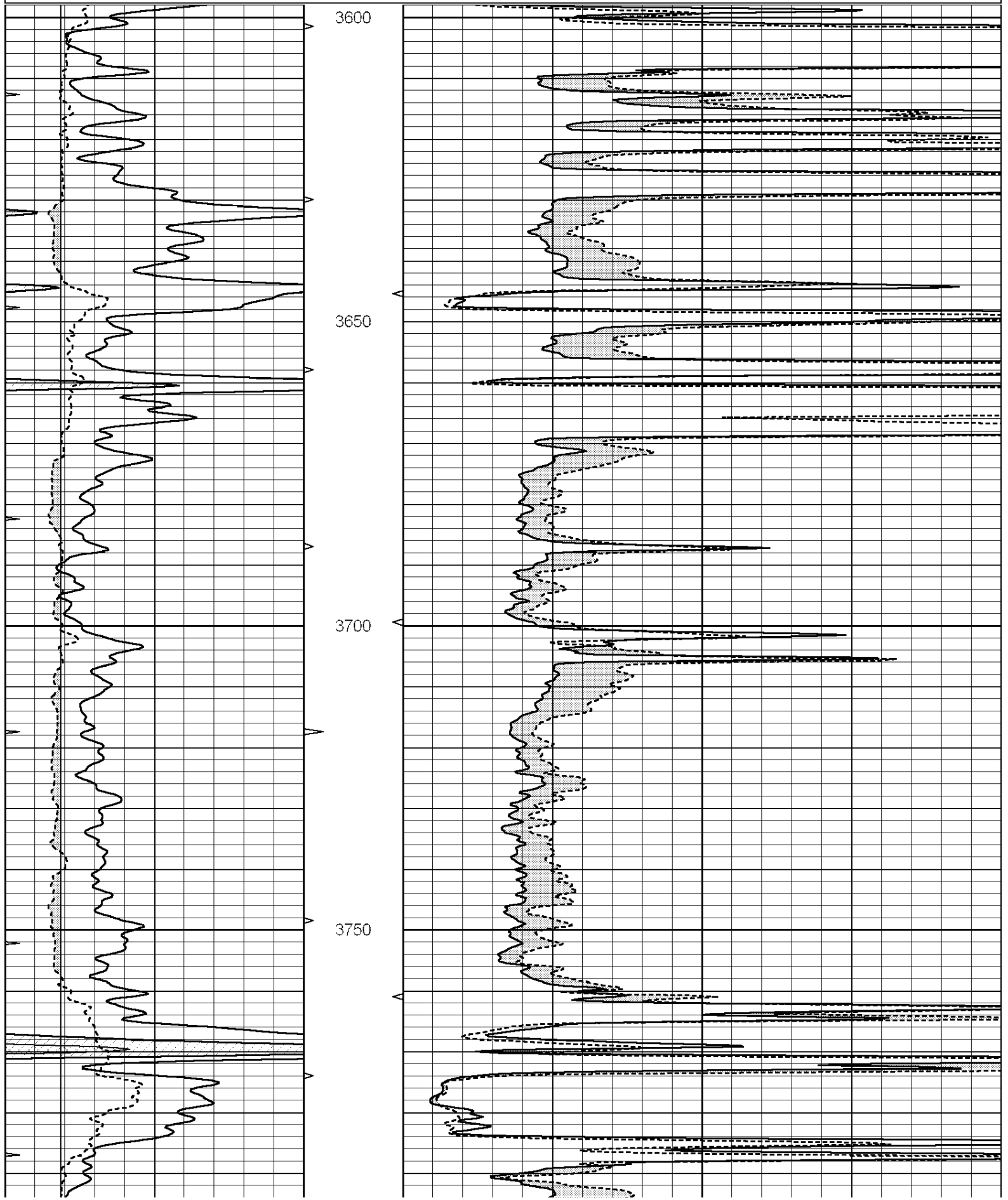
<<< Fold Here >>>

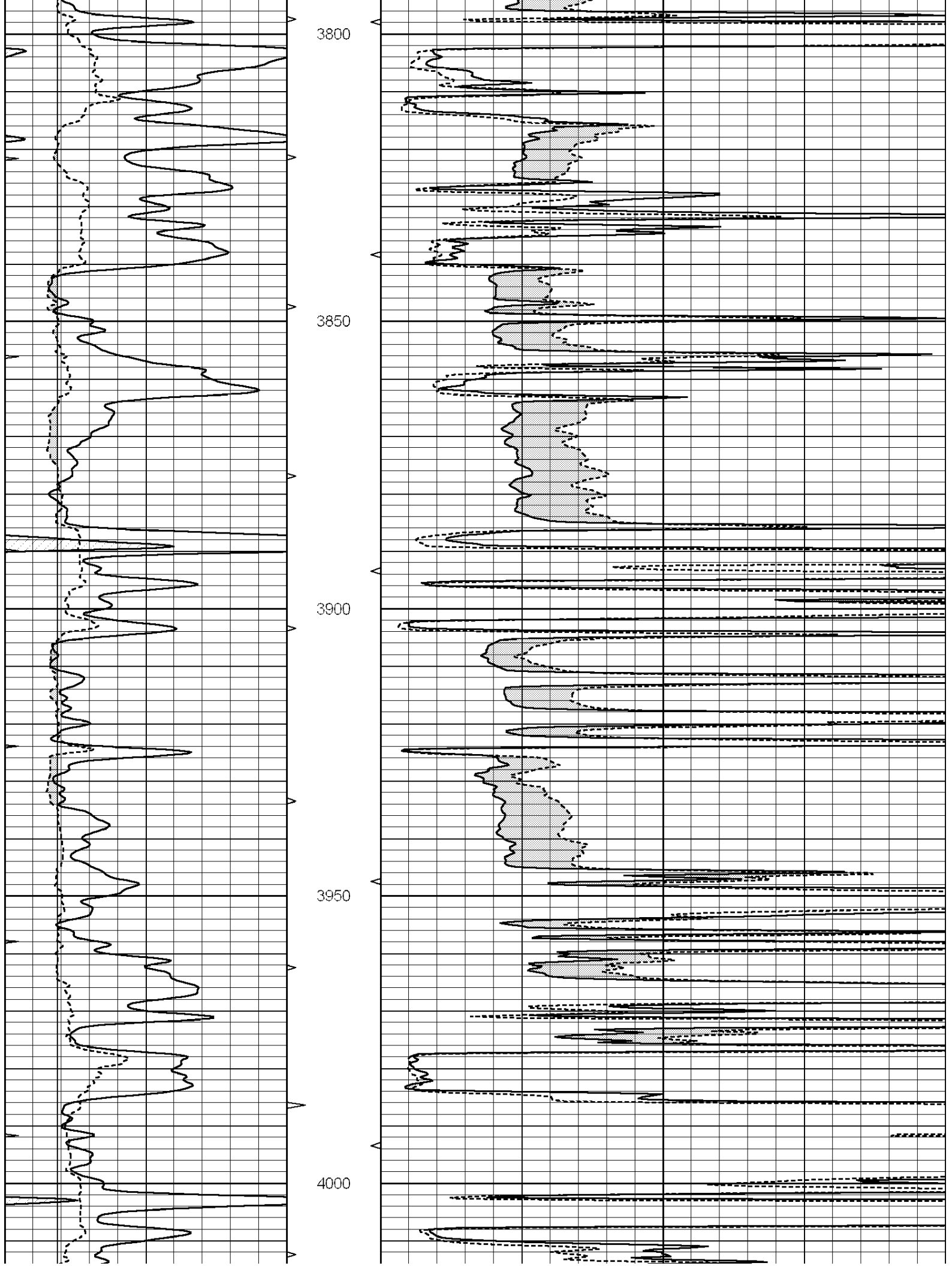
All interpretations are opinions based on inferences from electrical or other measurements and we cannot and do not guarantee the accuracy or correctness of any interpretation, and we shall not, except in the case of gross or willful negligence on our part, be liable or responsible for any loss, costs, damages, or expenses incurred or sustained by anyone resulting from any interpretation made by any of our officers, agents or employees. These interpretations are also subject to our general terms and conditions set out in our current Price Schedule.

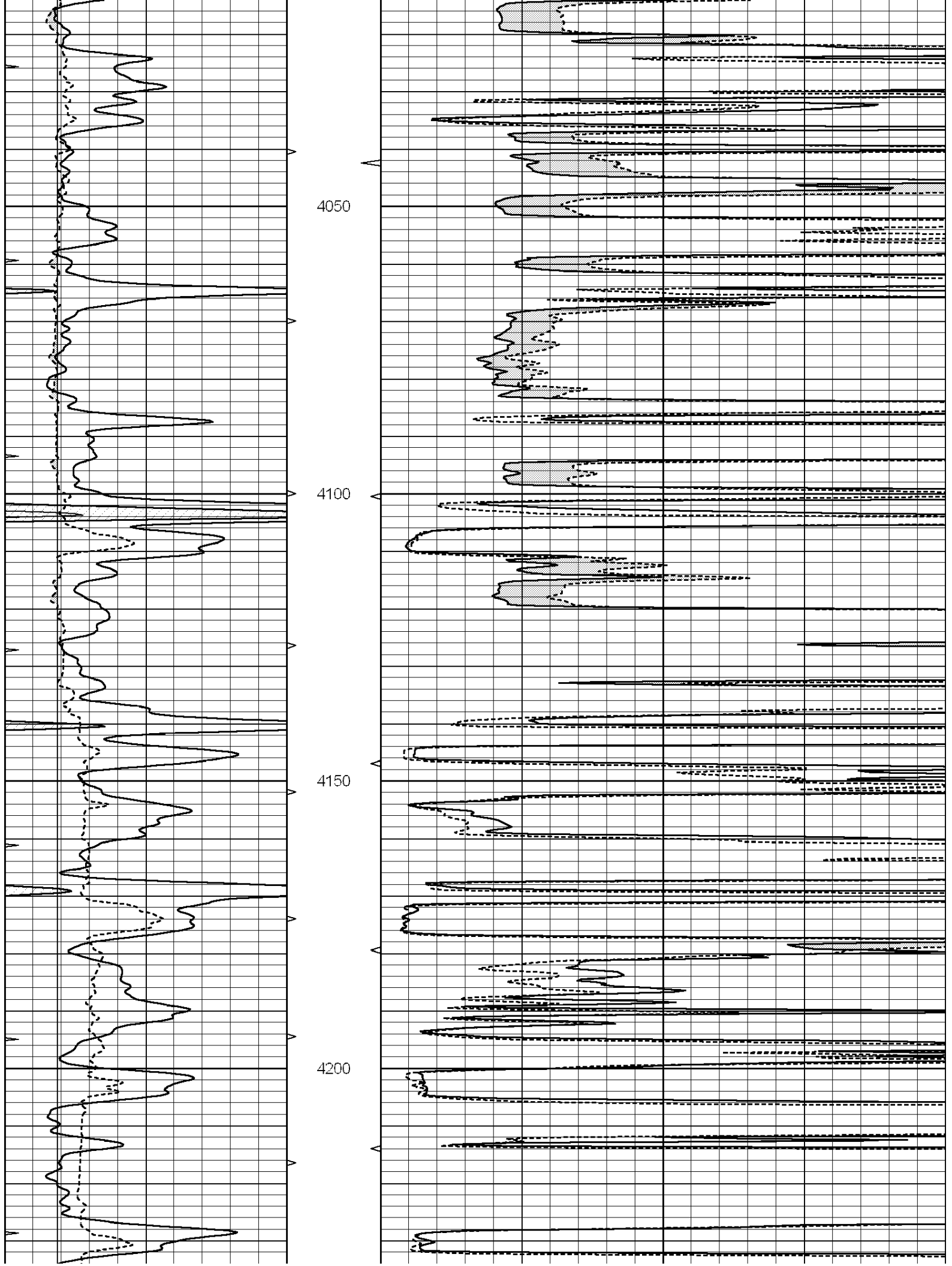
Comments

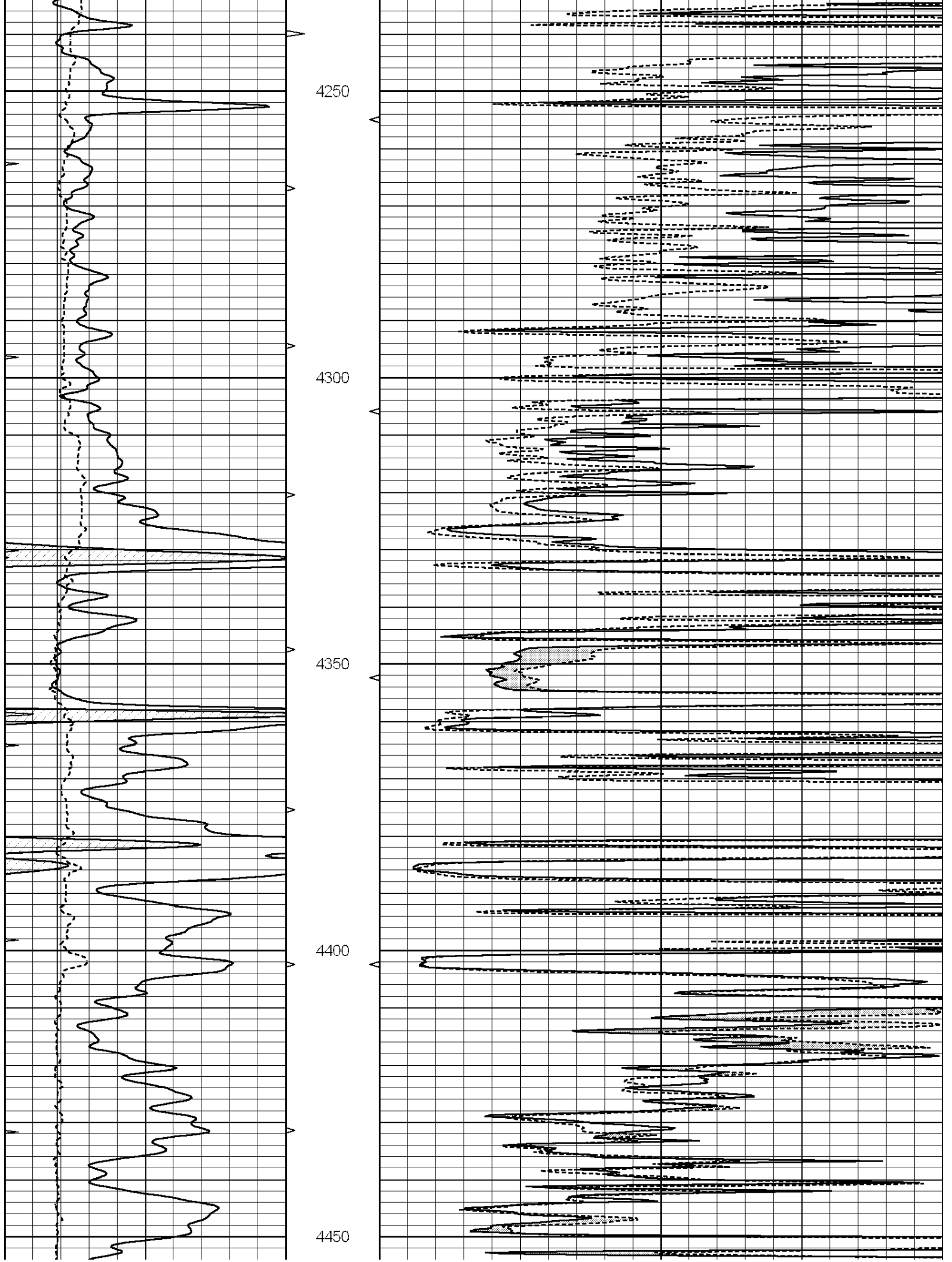
THANK YOU FOR USING "NABORS" HAYS, KANSAS (785) 628 6395
DIRECTIONS
NESS CITY, KS., 7 MILES SOUTH TO RD 60 - 2 MILES WEST TO RD Q
1/2 MILE SOUTH - EAST INTO

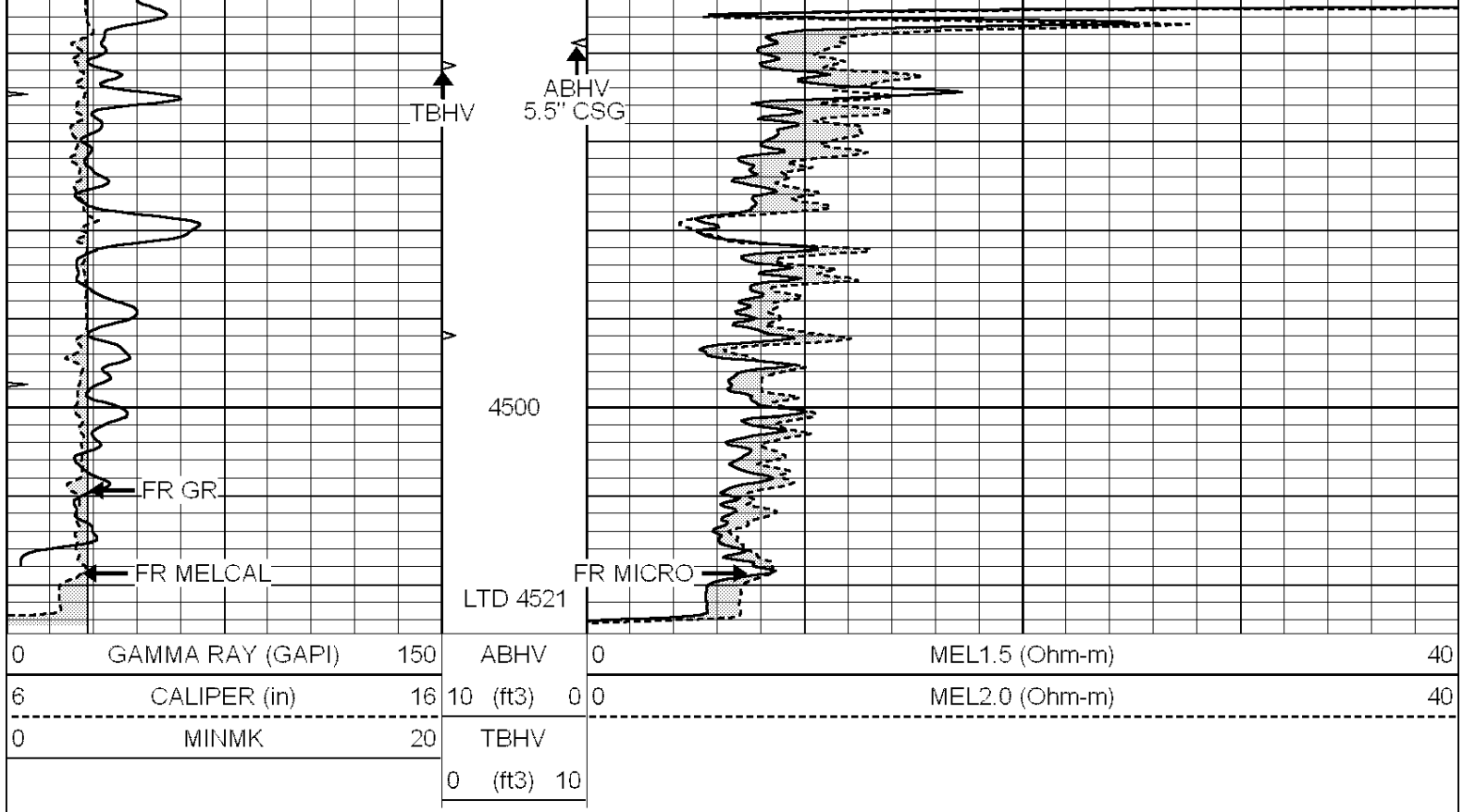
0	GAMMA RAY (GAPI)	150	ABHV	0	MEL1.5 (Ohm-m)	40
6	CALIPER (in)	16	10 (ft3)	0	MEL2.0 (Ohm-m)	40
0	MINMK	20	TBHV			
			0 (ft3)	10		







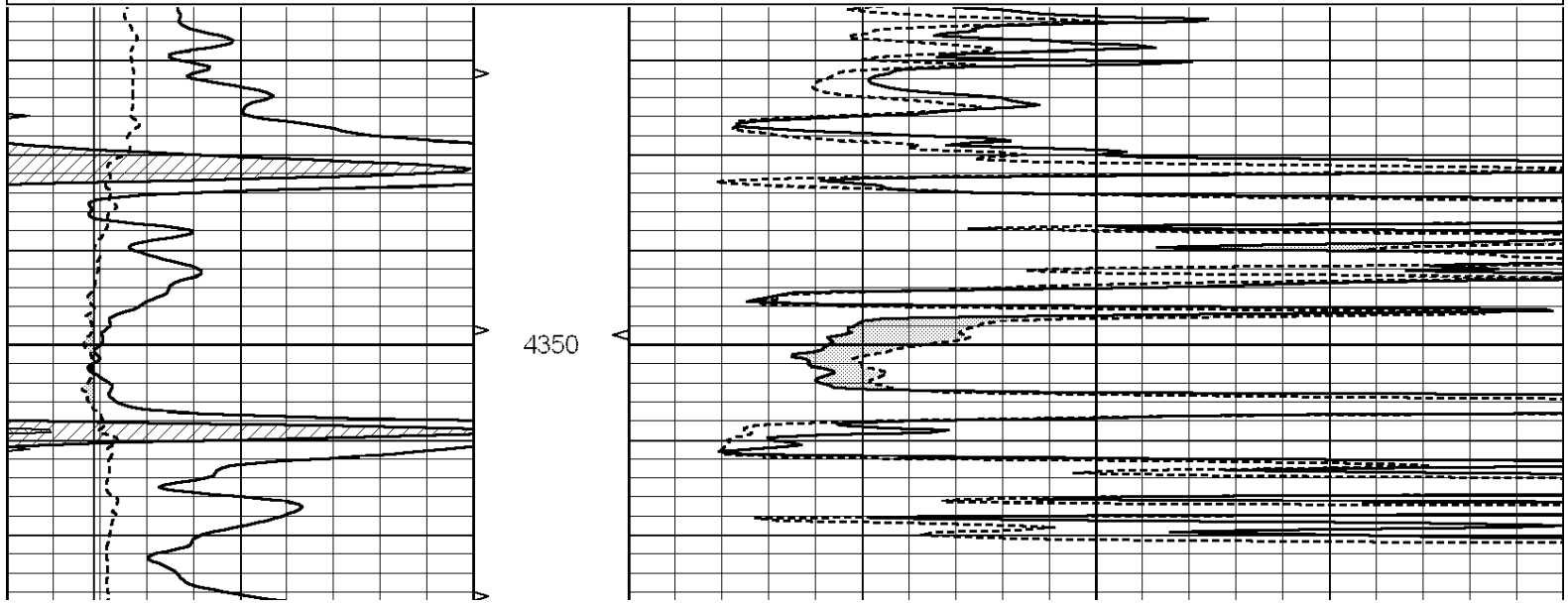


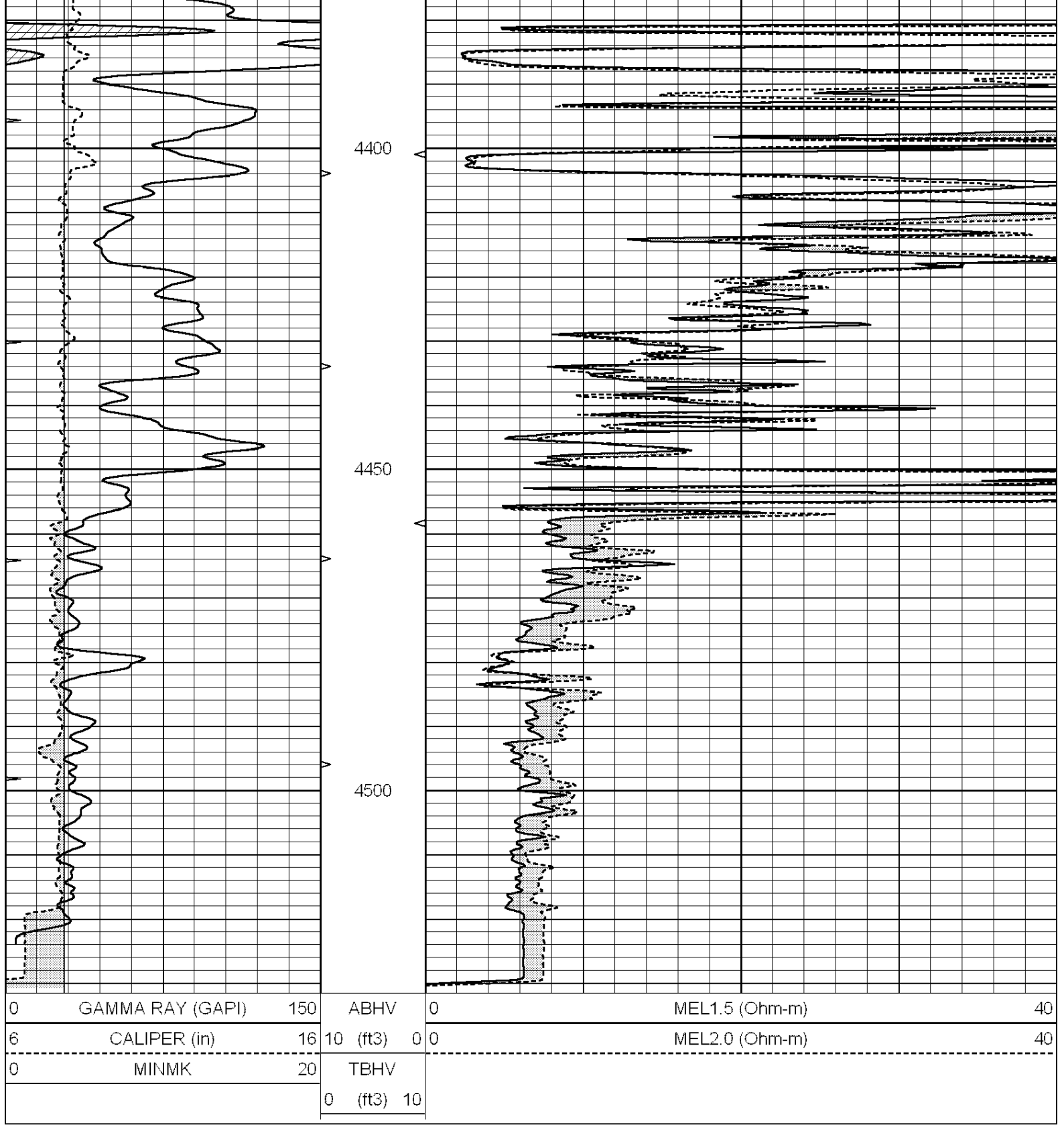


REPEAT SECTION

Database File: 011816pd.db
 Dataset Pathname: pass4.3
 Presentation Format: micro
 Dataset Creation: Fri Nov 29 13:29:42 2013 by Calc SOC 120430
 Charted by: Depth in Feet scaled 1:240

0	GAMMA RAY (GAPI)	150	ABHV	0	MEL1.5 (Ohm-m)	40
6	CALIPER (in)	16	10 (ft3)	0 0	MEL2.0 (Ohm-m)	40
0	MINMK	20	TBHV			
			0 (ft3)	10		





Calibration Report

Database File: 011816pd.db
 Dataset Pathname: pass5.2
 Dataset Creation: Fri Nov 29 13:27:27 2013 by Calc SOC 120430

MICRO Calibration Report

Serial Number: MICRO5
 Tool Model: PROBE
 Performed: Tue Nov 19 08:57:12 2013

Caliper Calibration: Gain=3.399 Offset=-5.556

References	Low Cal	High Cal
Readings	8.400	15.000
	4.106	6.048
1.5" Calibration:	Gain=42.000	Offset=-1.000
References	Low Cal	High Cal
Readings	0.000	20.000
	0.015	1.005
2" Calibration:	Gain=55.000	Offset=-1.300
References	Low Cal	High Cal
Readings	0.000	20.000
	0.009	0.910
Gamma Ray Calibration Report		
Serial Number:	GR3	
Tool Model:	OPEN	
Performed:	Tue Nov 19 09:11:23 2013	
Calibrator Value:	200.0	GAPI
Background Reading:	3.0	cps
Calibrator Reading:	186.0	cps
Sensitivity:	1.0000	GAPI/cps