



**COMPLETION  
& PRODUCTION  
SERVICES CO.**

**MICRO  
LOG**

Company	CASTELLI EXPLORATION, INC.	Company	CASTELLI EXPLORATION, INC.
Well	CHARLIE BROWN #2-25	Well	CHARLIE BROWN #2-25
Field	HAM NORTHEAST	Field	HAM NORTHEAST
County	COMANCHE	County	COMANCHE
State	KANSAS	State	KANSAS
Location:	API # : 15-033-21739-0000	Other Services	CDL/CNL/PE DIL
Permanent Datum	GROUND LEVEL	Elevation	1759
Log Measured From	KELLY BUSHING 12' A.G.L.	K.B.	1771
Drilling Measured From	KELLY BUSHING	D.F.	1769
	SEC 25 TWP 33S RGE 16W	G.L.	1759

Date	12/7/13
Run Number	TWO
Depth Driller	5700
Depth Logger	5710
Bottom Logged Interval	5708
Top Log Interval	4000
Casing Driller	13 3/8" @ 333'
Casing Logger	333
Bit Size	7 7/8"
Type Fluid in Hole	CHEMICAL MUD
Density / Viscosity	9.2/50
pH / Fluid Loss	8.5/8.8
Source of Sample	FLOWLINE
Rim @ Meas. Temp	.950 @ .55F
Rmf @ Meas. Temp	.713 @ .55F
Rmc @ Meas. Temp	1.14 @ .55F
Source of Rmf / Rmc	MEASUREMENT
Rim @ BHT	.399 @ 131F
Time Circulation Stopped	6 HOURS
Time Logger on Bottom	12:30 A.M.
Maximum Recorded Temperature	131F
Equipment Number	4854
Location	HAYS, KANSAS
Recorded By	JEFF LUEBBERS
Witnessed By	TOM CASTELLI
	RICK POPP

<<< Fold Here >>>

All interpretations are opinions based on inferences from electrical or other measurements and we cannot and do not guarantee the accuracy or correctness of any interpretation, and we shall not, except in the case of gross or willful negligence on our part, be liable or responsible for any loss, costs, damages, or expenses incurred or sustained by anyone resulting from any interpretation made by any of our officers, agents or employees. These interpretations are also subject to our general terms and conditions set out in our current Price Schedule.

**Comments**

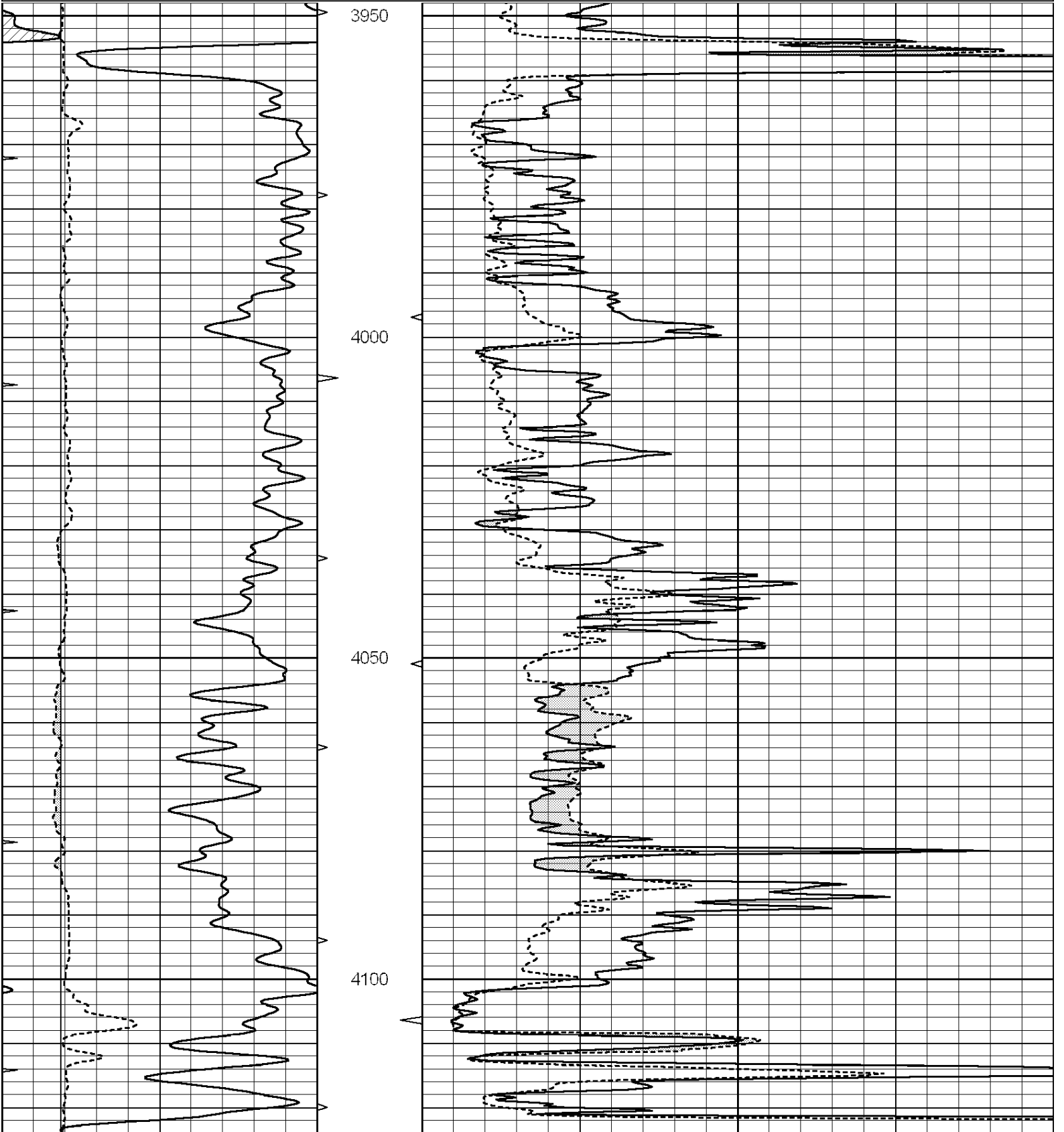
THANK YOU FOR USING "NABORS" HAYS, KANSAS (785) 628-6395  
 DIRECTIONS  
 COLDWATER, KS. 9E. ON HWY 160 TO (MM #193)"RD.22", 4S. TO STOP SIGN, 2E. TO OPEN RANGE,  
 7S. & E. & S. TO OLD BARN, CONTINUE E. PAST MERRILL RANCH SIGN TO "T" 1/2S. ON RD. 31, E. SIDE

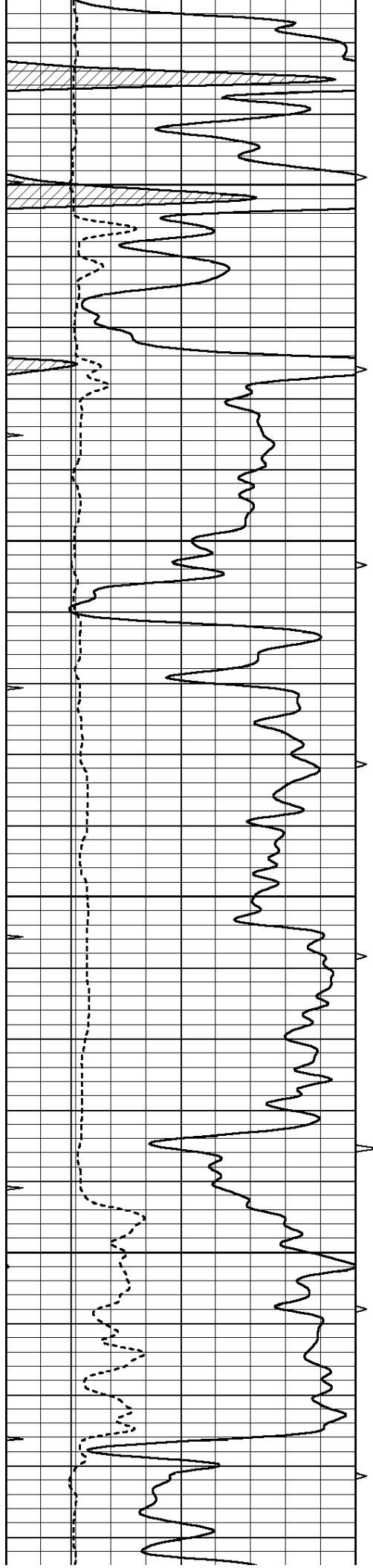


**MAIN SECTION**

Database File: 011822pe.db  
 Dataset Pathname: pass8.4  
 Presentation Format: micro  
 Dataset Creation: Sun Dec 08 05:56:30 2013  
 Charted by: Depth in Feet scaled 1:240

0	GAMMA RAY (GAPI)	150	ABHV	0	MEL1.5 (Ohm-m)	40
6	CALIPER (in)	16	10 (ft3)	0	MEL2.0 (Ohm-m)	40
0	MINMK	20	TBHV			
			0 (ft3)	10		



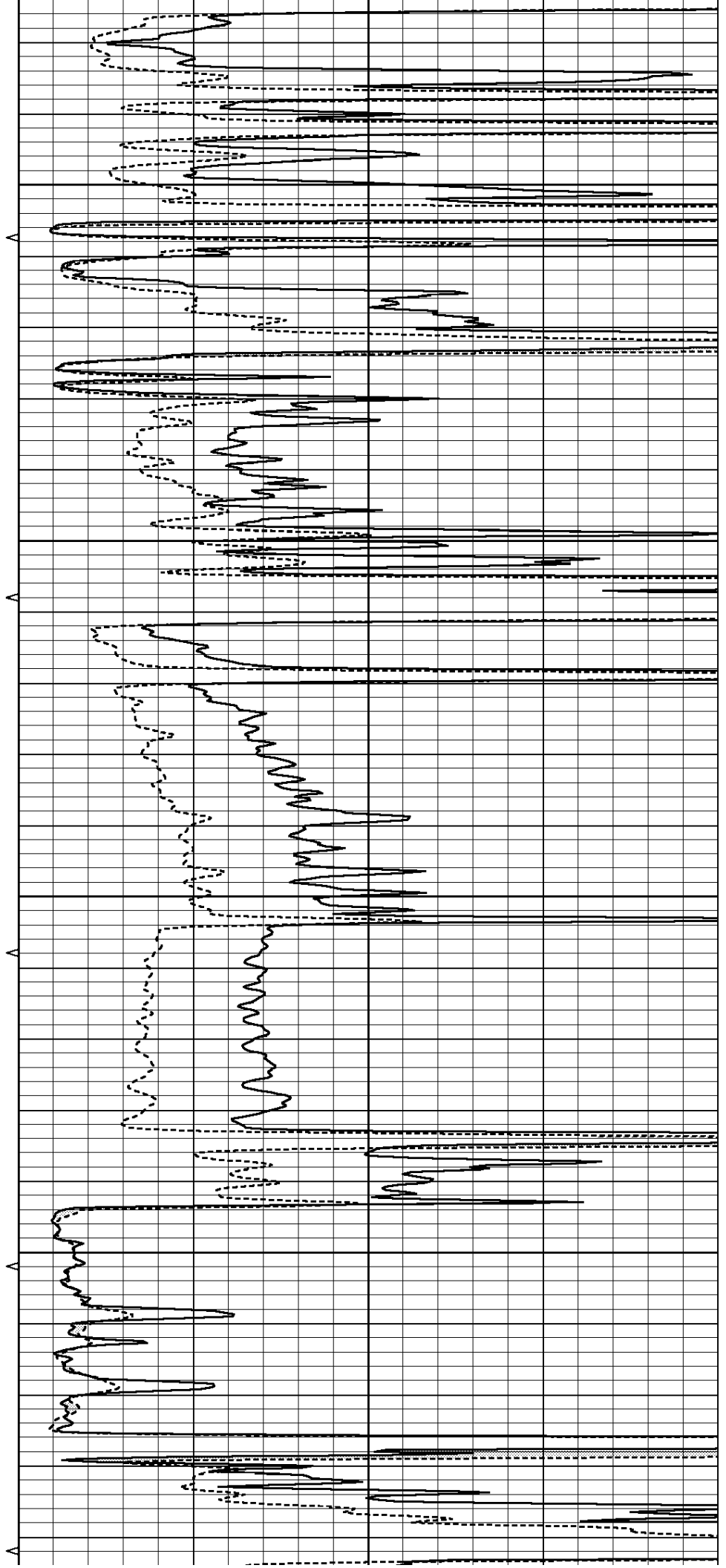


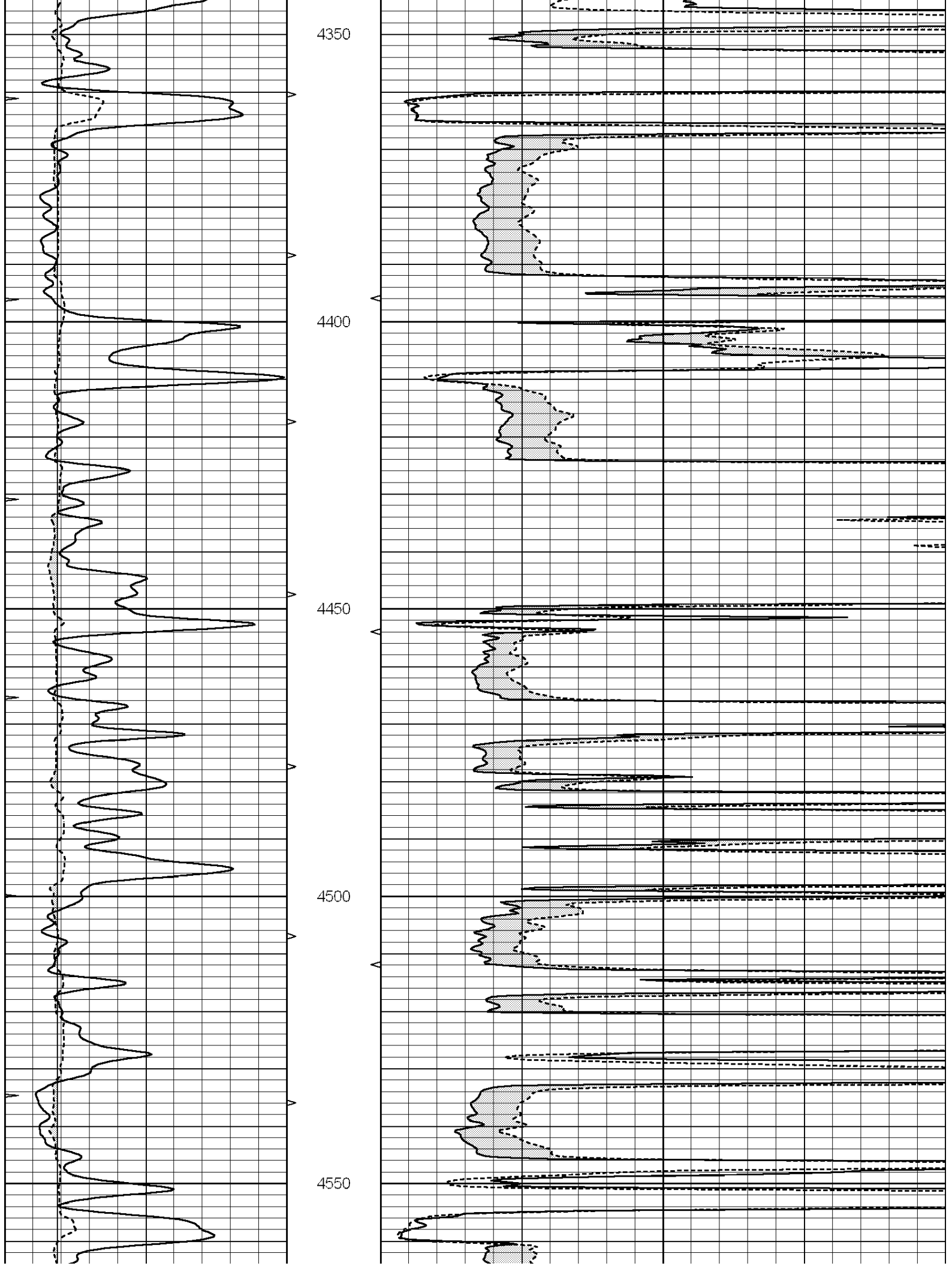
4150

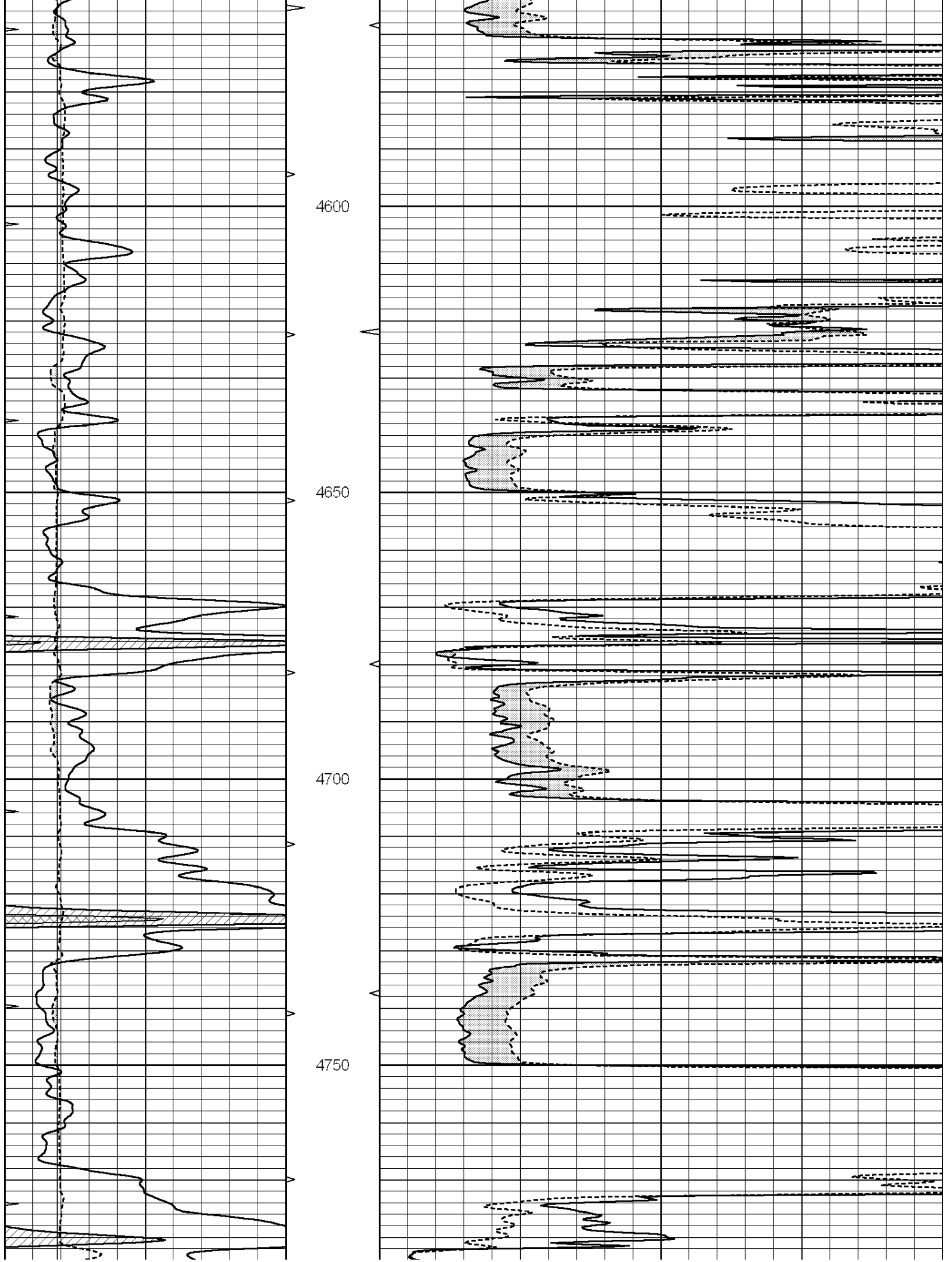
4200

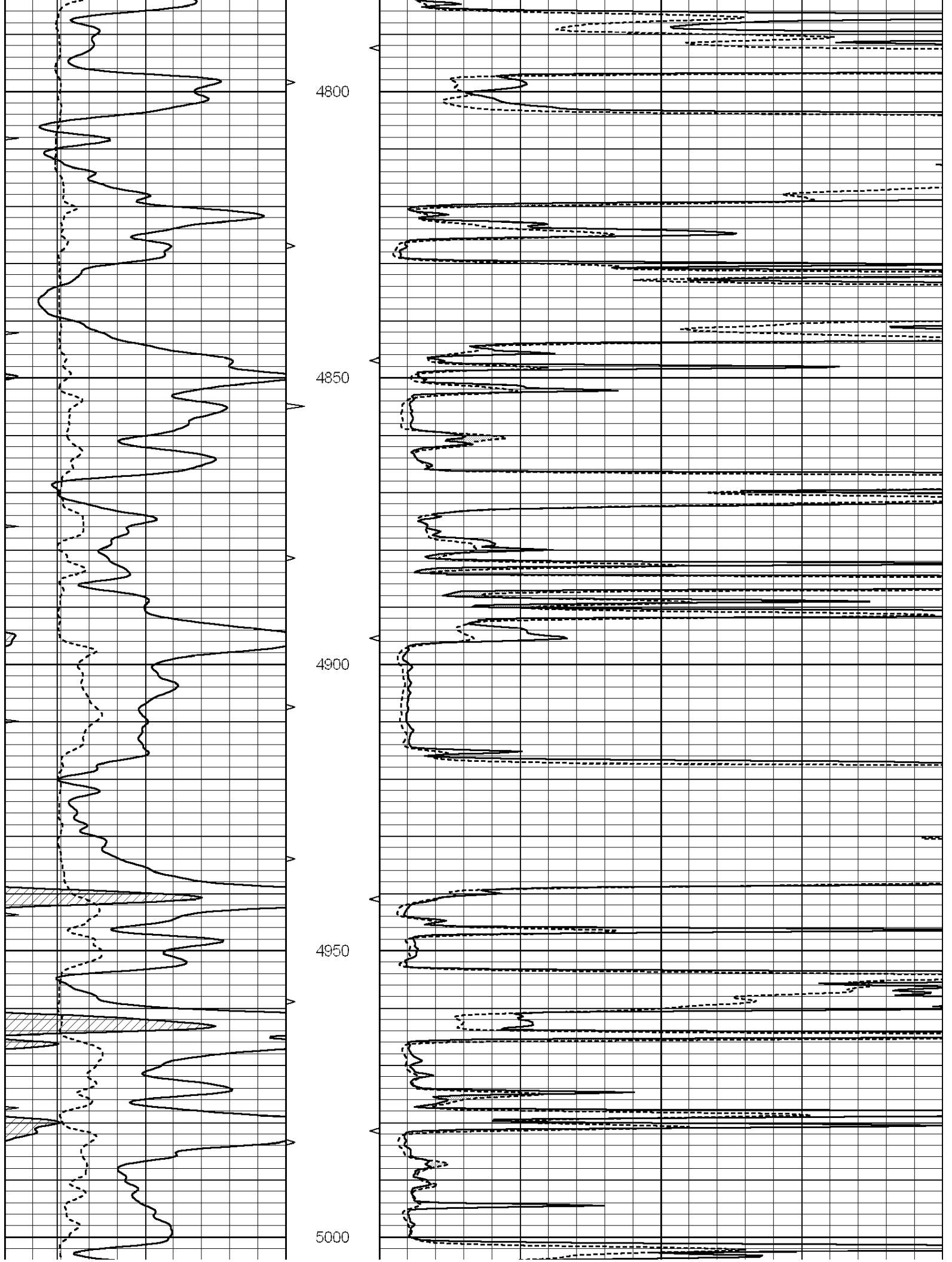
4250

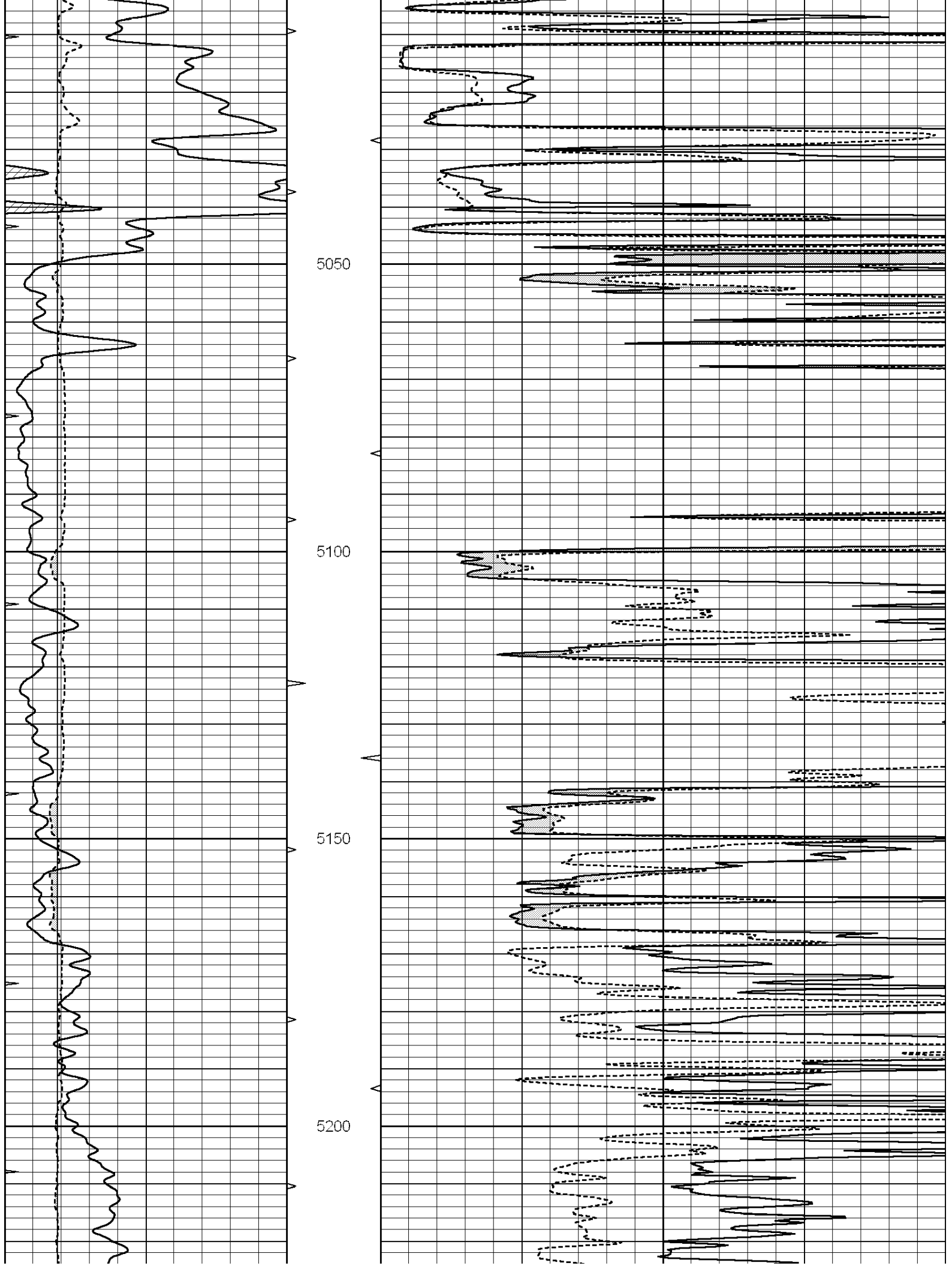
4300

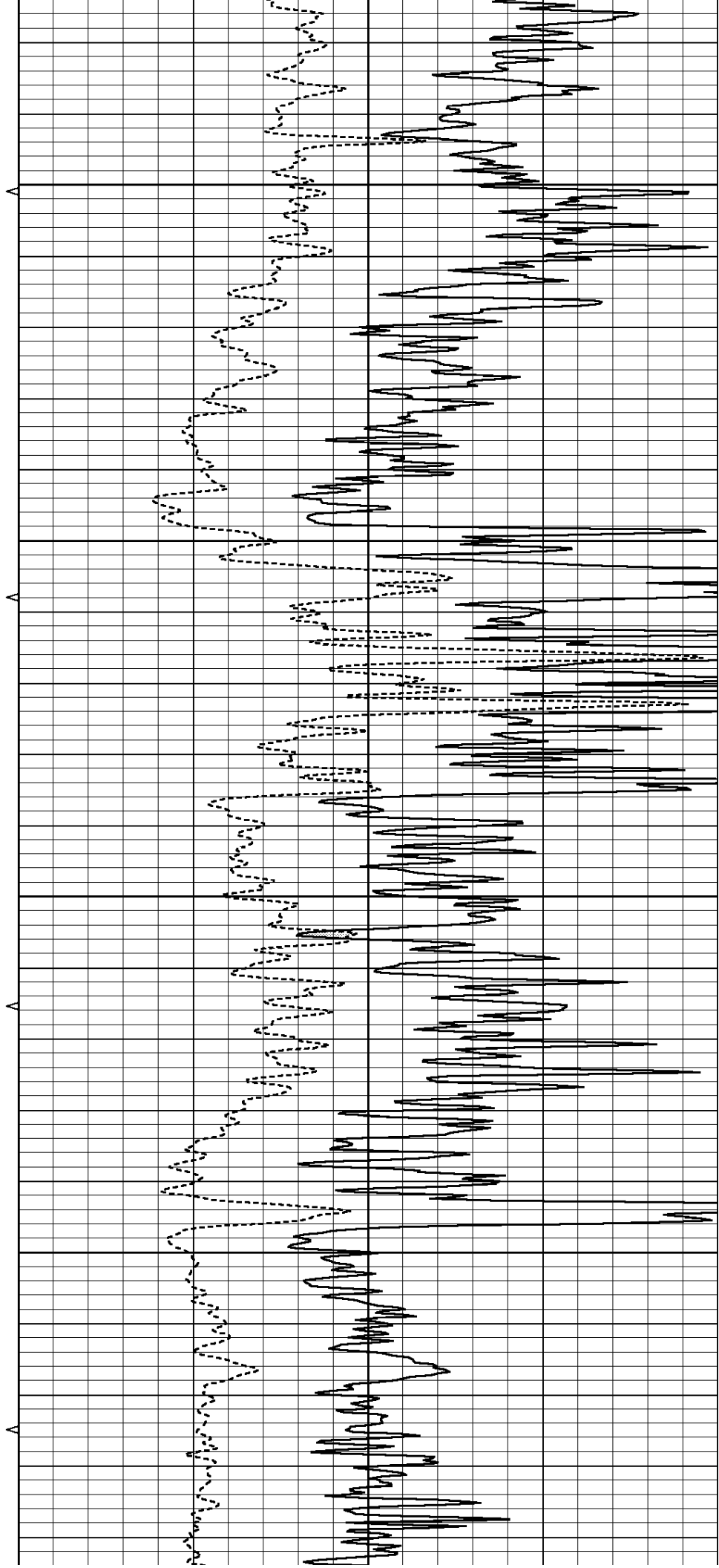
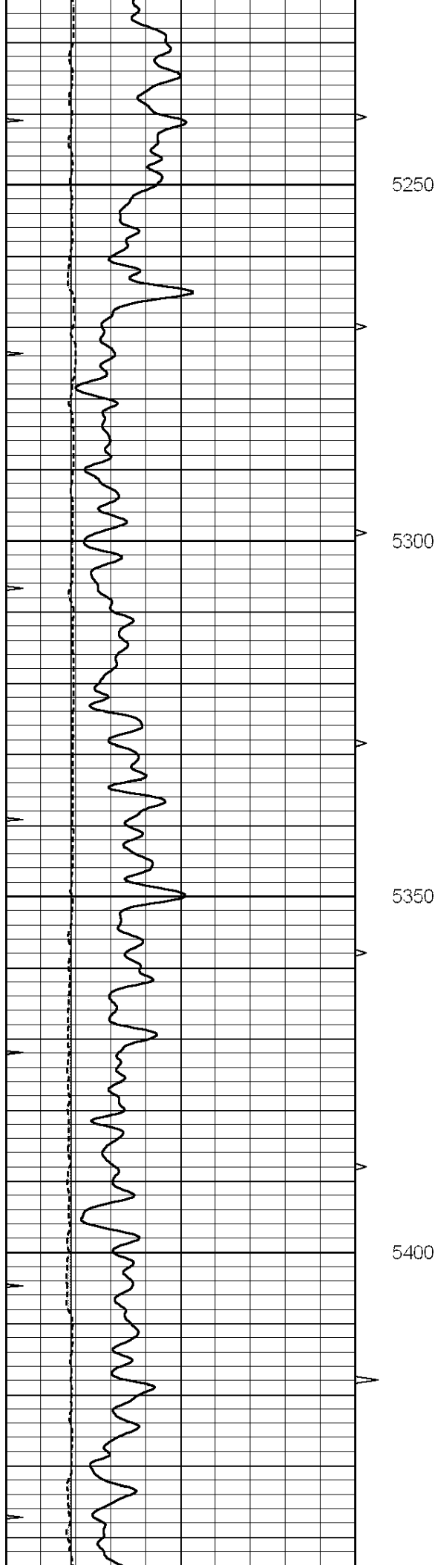


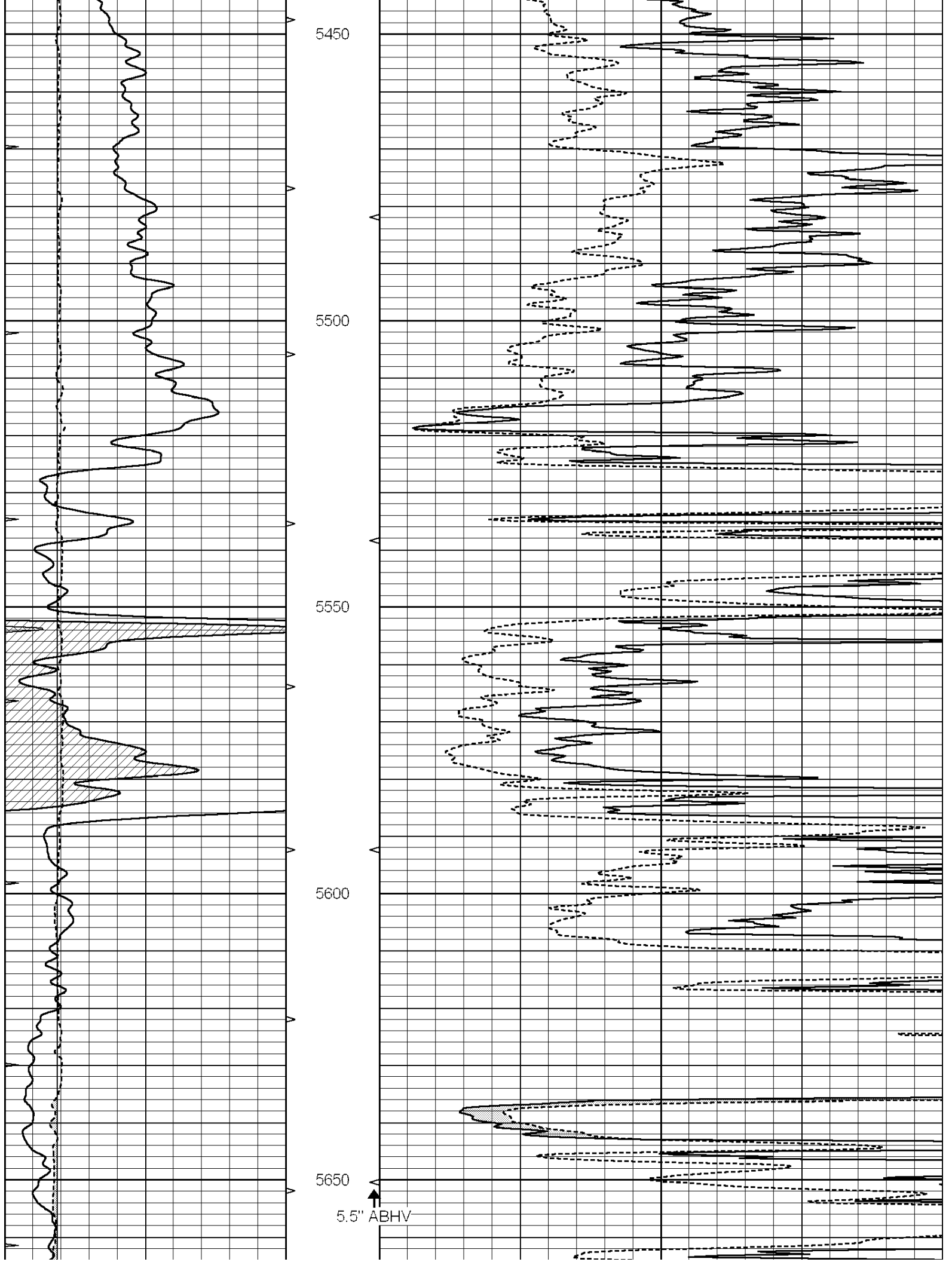


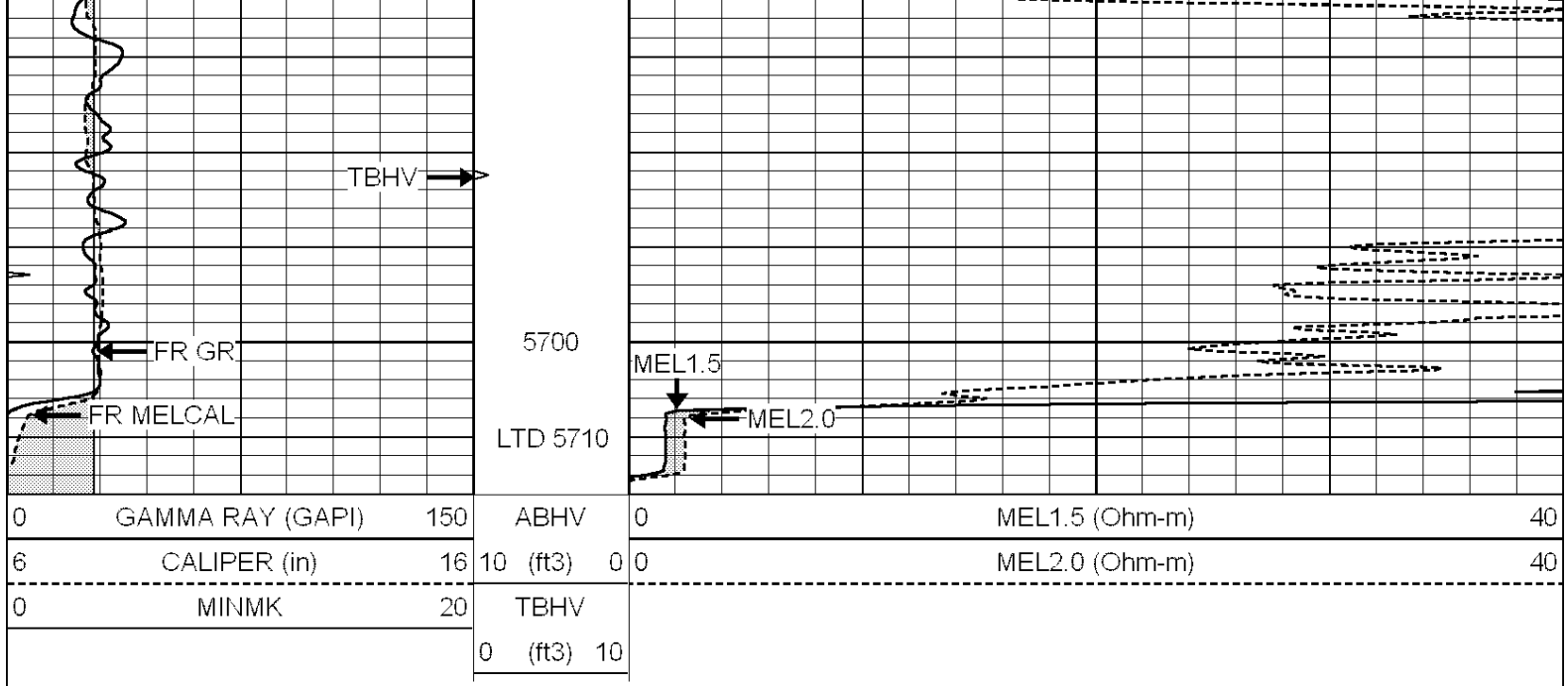








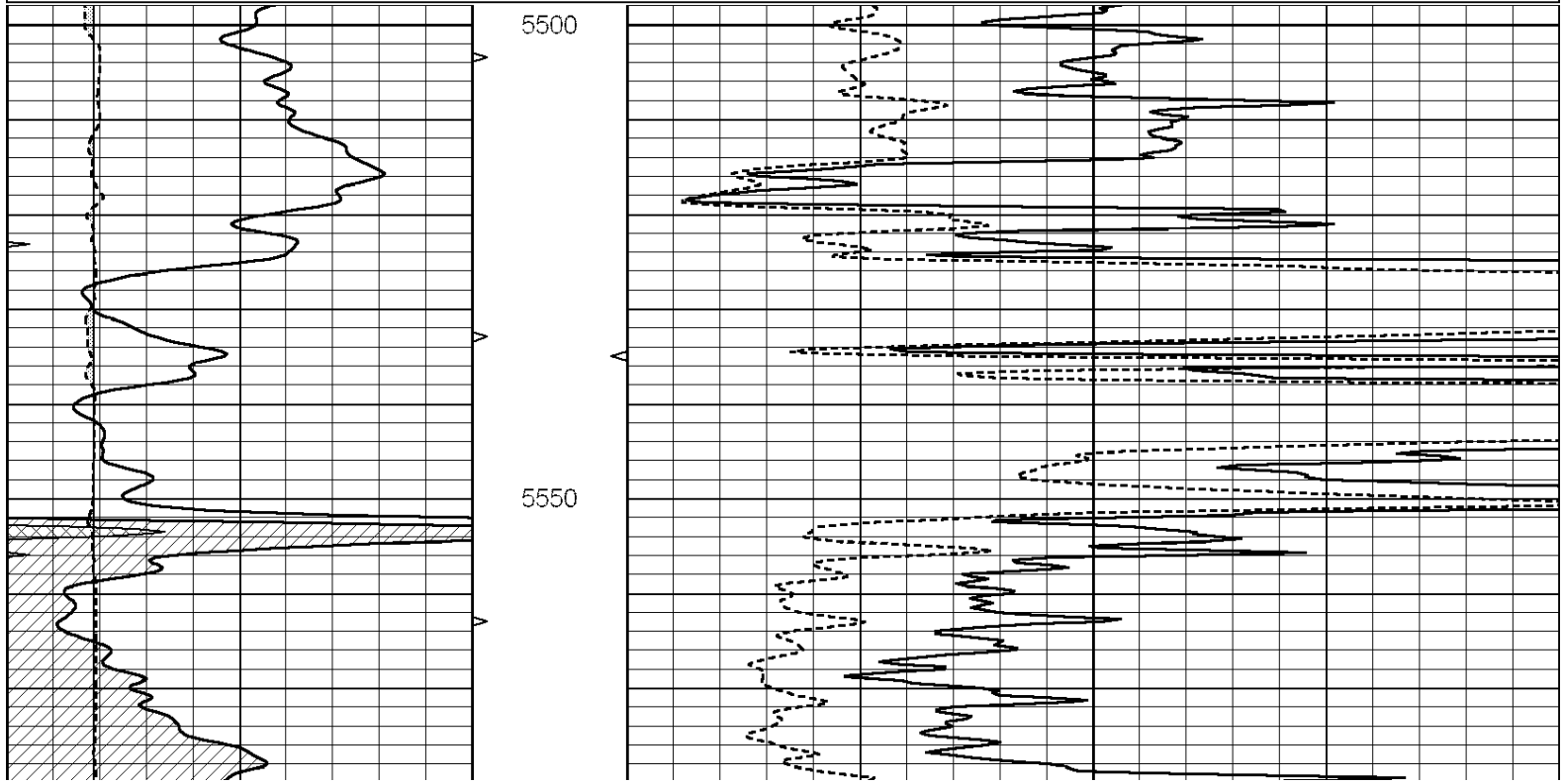


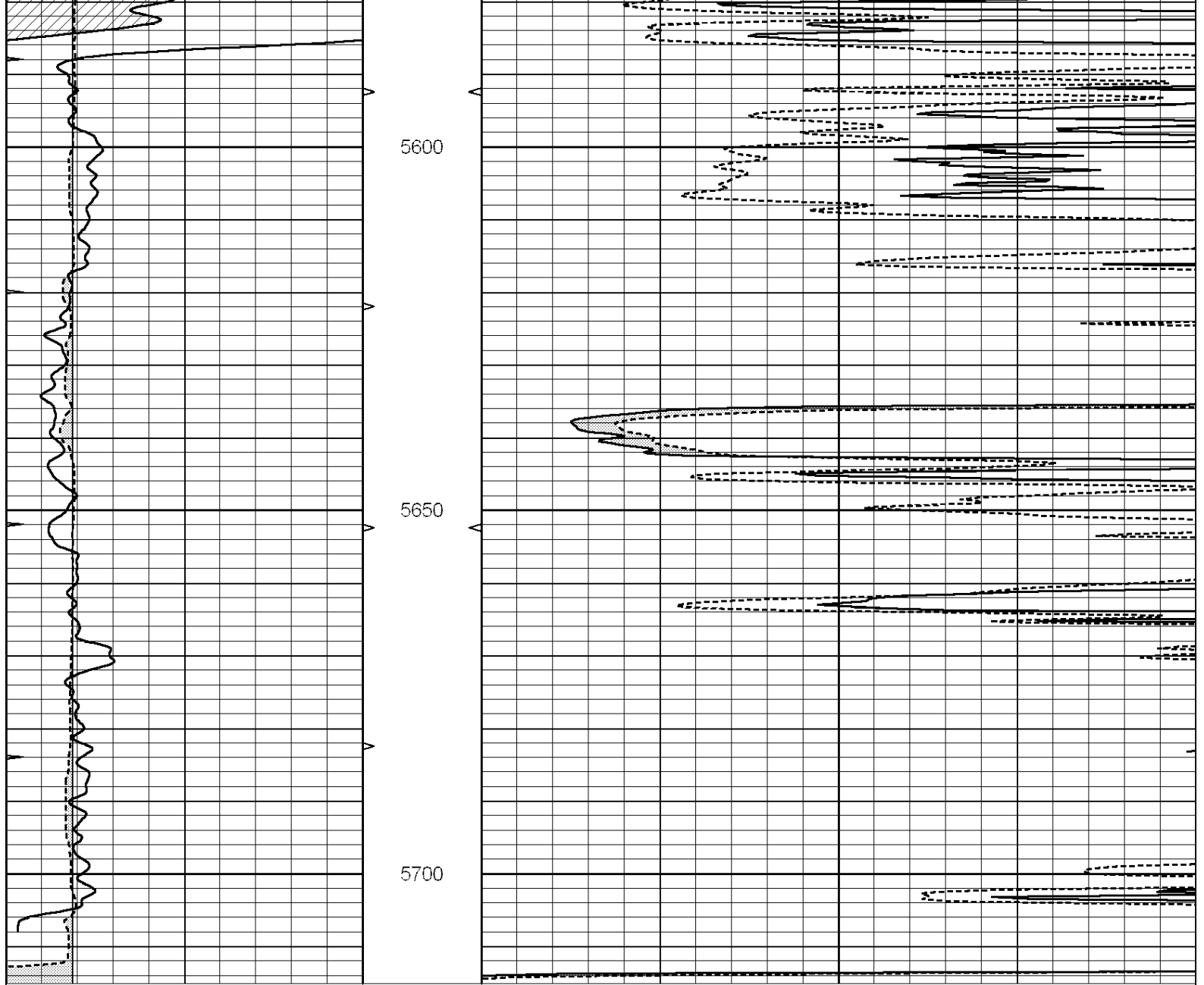


# REPEAT SECTION

Database File: 011822pe.db  
 Dataset Pathname: pass7.3  
 Presentation Format: micro  
 Dataset Creation: Sun Dec 08 04:06:25 2013 by Calc SOC 120430  
 Charted by: Depth in Feet scaled 1:240

0	GAMMA RAY (GAPI)	150	ABHV	0	MEL1.5 (Ohm-m)	40
6	CALIPER (in)	16	10 (ft3)	0	MEL2.0 (Ohm-m)	40
0	MINMK	20	TBHV			
			0 (ft3)	10		





0	GAMMA RAY (GAPI)	150	ABHV	0	MEL1.5 (Ohm-m)	40
6	CALIPER (in)	16	10 (ft3)	0 0	MEL2.0 (Ohm-m)	40
0	MINMK	20	TBHV			
			0 (ft3)	10		

### Calibration Report

Database File: 011822pe.db  
 Dataset Pathname: pass8.4  
 Dataset Creation: Sun Dec 08 05:56:30 2013

### MICRO Calibration Report

Serial Number: MICRO5  
 Tool Model: PROBE  
 Performed: Fri Dec 06 04:10:58 2013

Caliper Calibration: Gain=3.399      Offset=-5.556

References	Low Cal	High Cal
Readings	8.400	15.000
	4.106	6.048

1.5" Calibration: Gain=42.000      Offset=-0.500

	Low Cal	High Cal
References	0.000	20.000
Readings	0.015	1.005

2" Calibration:	Gain=54.000	Offset=-0.800
	Low Cal	High Cal
References	0.000	20.000
Readings	0.009	0.910

Gamma Ray Calibration Report		
------------------------------	--	--

Serial Number:	GR3	
Tool Model:	OPEN	
Performed:	Sun Dec 08 03:32:59 2013	
Calibrator Value:	200.0	GAPI
Background Reading:	3.0	cps
Calibrator Reading:	186.0	cps
Sensitivity:	1.3000	GAPI/cps