



**COMPLETION
& PRODUCTION
SERVICES CO.**

**COMPENSATED
DENSITY / NEUTRON
PE LOG**

Company CASTELLI EXPLORATION, INC.
Well CHARLIE BROWN #2-25
Field HAM NORTHEAST
County COMANCHE
State KANSAS

Company CASTELLI EXPLORATION, INC.
Well CHARLIE BROWN #2-25
Field HAM NORTHEAST
County COMANCHE State KANSAS

Location: API # : 15-033-21739-0000
2145' FSL & 2195' FWL
SW - NE - NE - SW
SEC 25 TWP 33S RGE 16W
Permanent Datum GROUND LEVEL Elevation 1759
Log Measured From KELLY BUSHING 12' A.G.L.
Drilling Measured From KELLY BUSHING
Other Services DIL/MEL
Elevation
K.B. 1771
D.F. 1769
G.L. 1759

Date	12/7/13
Run Number	ONE
Depth Driller	5700
Depth Logger	5710
Bottom Logged Interval	5686
Top Log Interval	4000
Casing Driller	13 3/8" @ 333'
Casing Logger	333
Bit Size	7 7/8"
Type Fluid in Hole	CHEMICAL MUD
Density / Viscosity	9.2/50
pH / Fluid Loss	8.5/8.8
Source of Sample	FLOWLINE
Rim @ Meas. Temp	.950 @ .55F
Rmf @ Meas. Temp	.713 @ .55F
Rmc @ Meas. Temp	1.14 @ .55F
Source of Rmf / Rmc	MEASUREMENT
Rim @ BHT	.399 @ 131F
Time Circulation Stopped	3 HOURS
Time Logger on Bottom	12:30 A.M.
Maximum Recorded Temperature	131F
Equipment Number	4854
Location	HAYS, KANSAS
Recorded By	JEFF LUEBBERS
Witnessed By	TOM CASTELLI
	RICK POPP

<<< Fold Here >>>

All interpretations are opinions based on inferences from electrical or other measurements and we cannot and do not guarantee the accuracy or correctness of any interpretation, and we shall not, except in the case of gross or willful negligence on our part, be liable or responsible for any loss, costs, damages, or expenses incurred or sustained by anyone resulting from any interpretation made by any of our officers, agents or employees. These interpretations are also subject to our general terms and conditions set out in our current Price Schedule.

Comments

THANK YOU FOR USING "NABORS" HAYS, KANSAS (785) 628-6395
DIRECTIONS

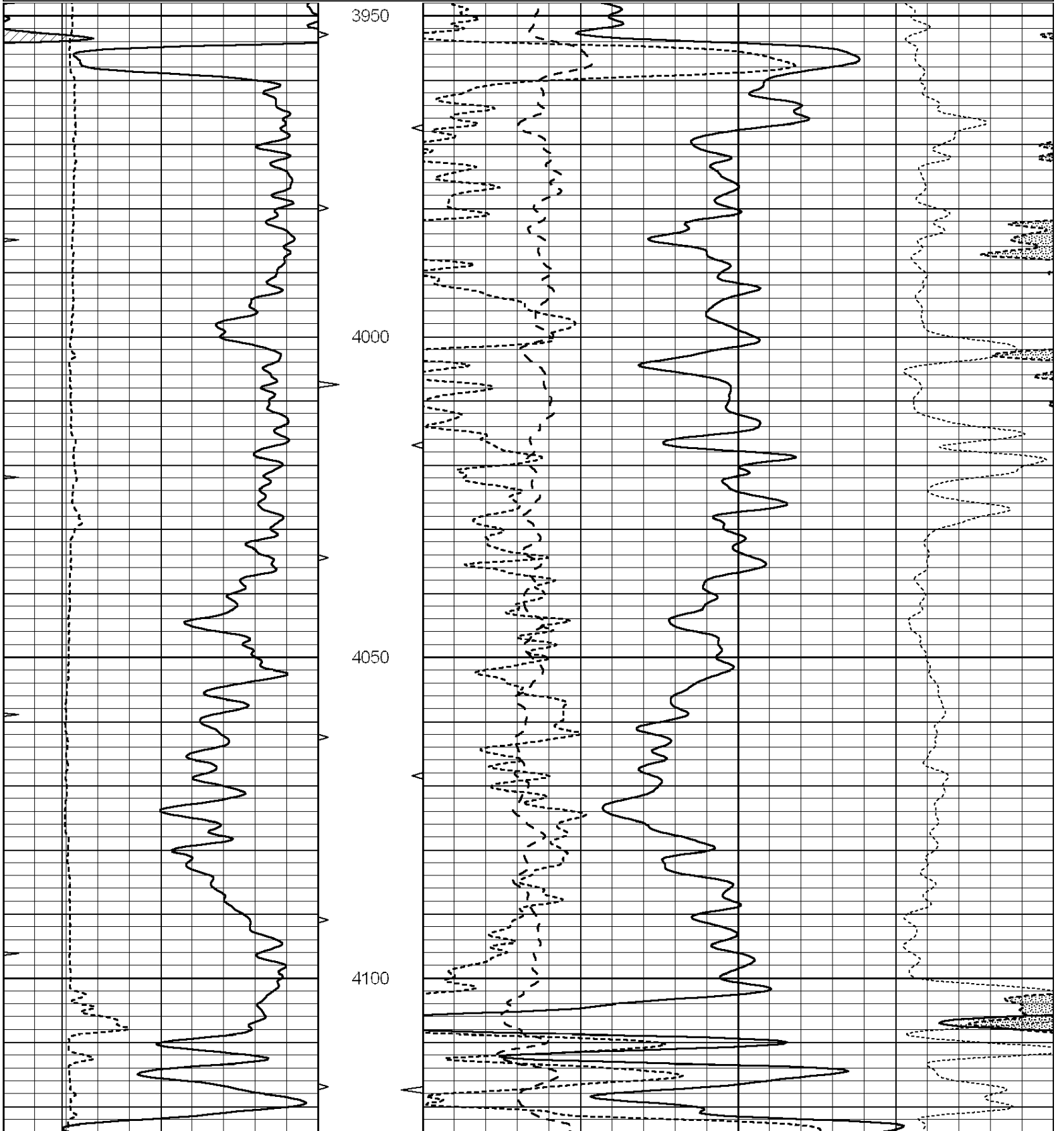
COLDWATER, KS. 9E. ON HWY 160 TO (MM #193)"RD.22", 4S. TO STOP SIGN, 2E. TO OPEN RANGE, 7S. & E. & S. TO OLD BARN, CONTINUE E. PAST MERRILL RANCH SIGN TO "T" 1/2S. ON RD. 31, E. SIDE

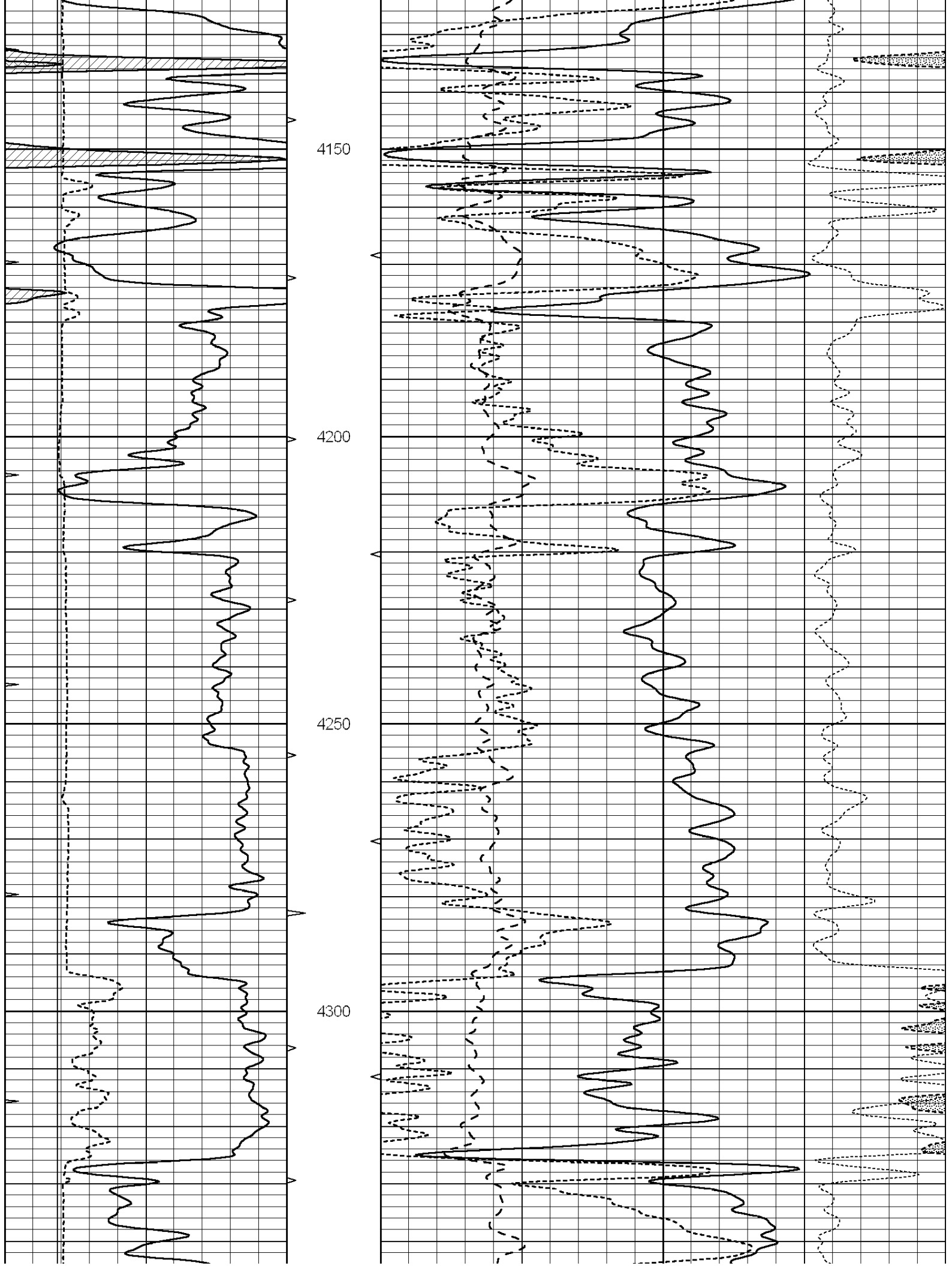


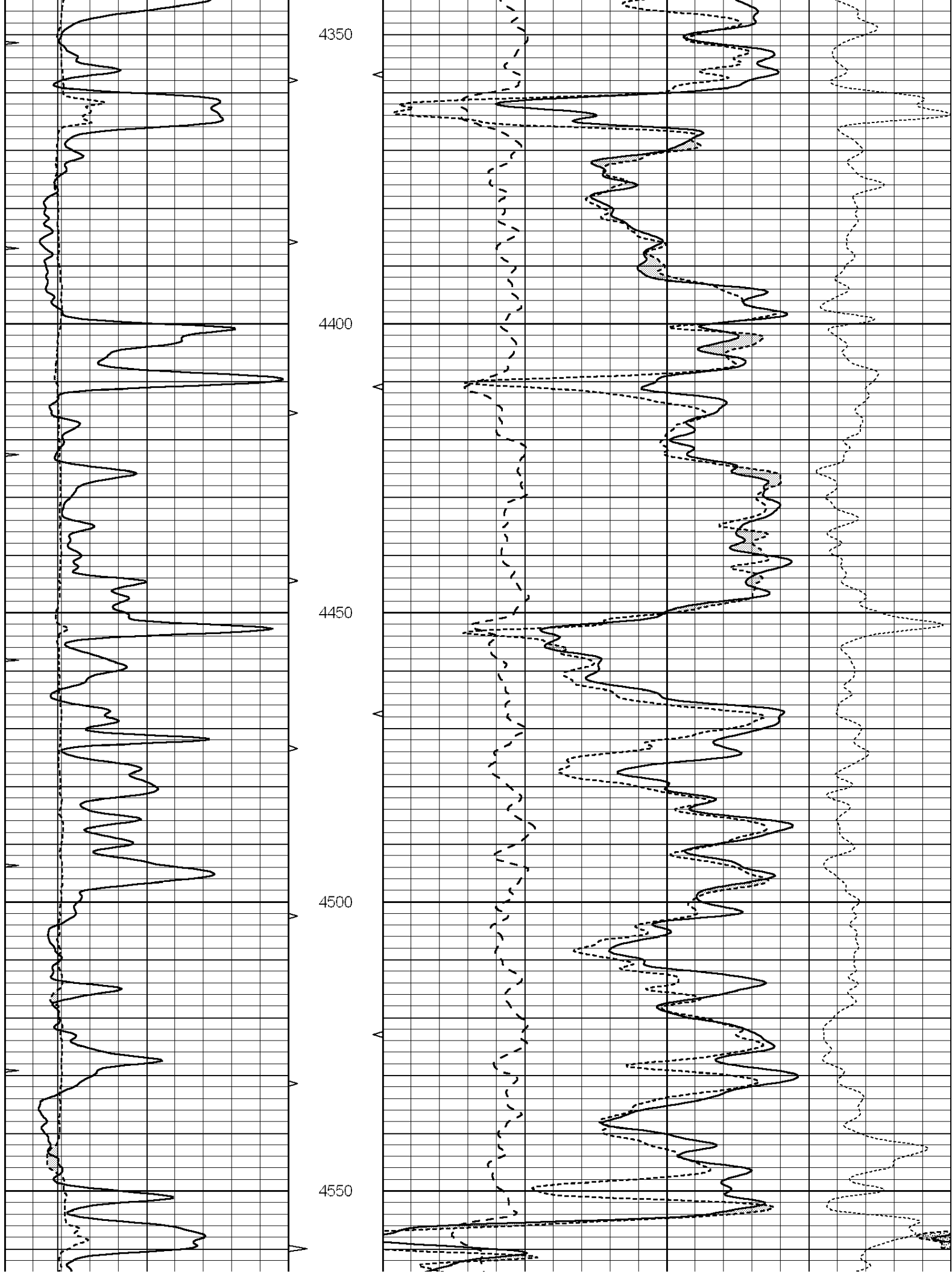
MAIN SECTION

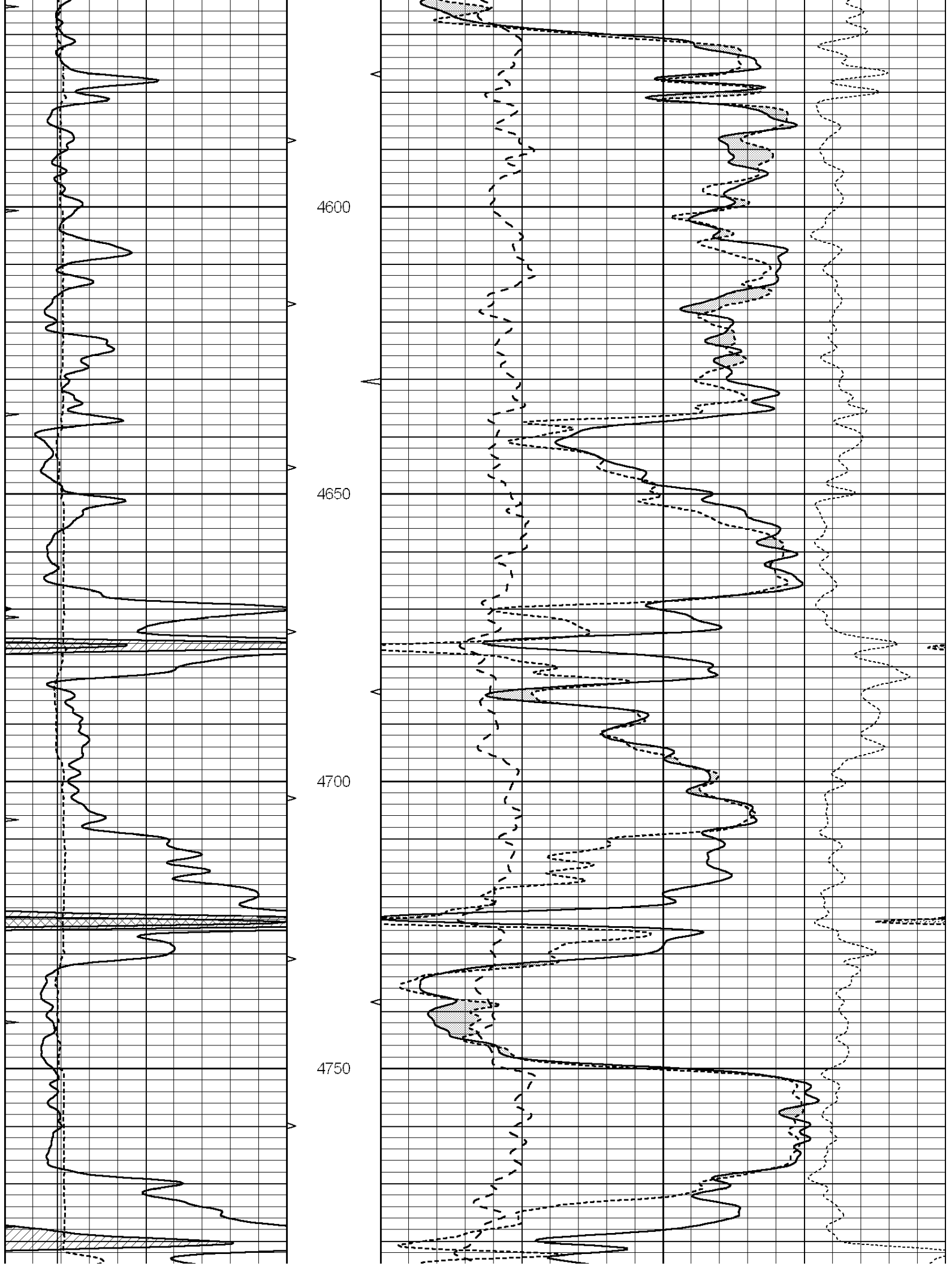
Database File: 011822pe.db
 Dataset Pathname: pass3.8
 Presentation Format: ldt_neu
 Dataset Creation: Sun Dec 08 02:06:42 2013
 Charted by: Depth in Feet scaled 1:240

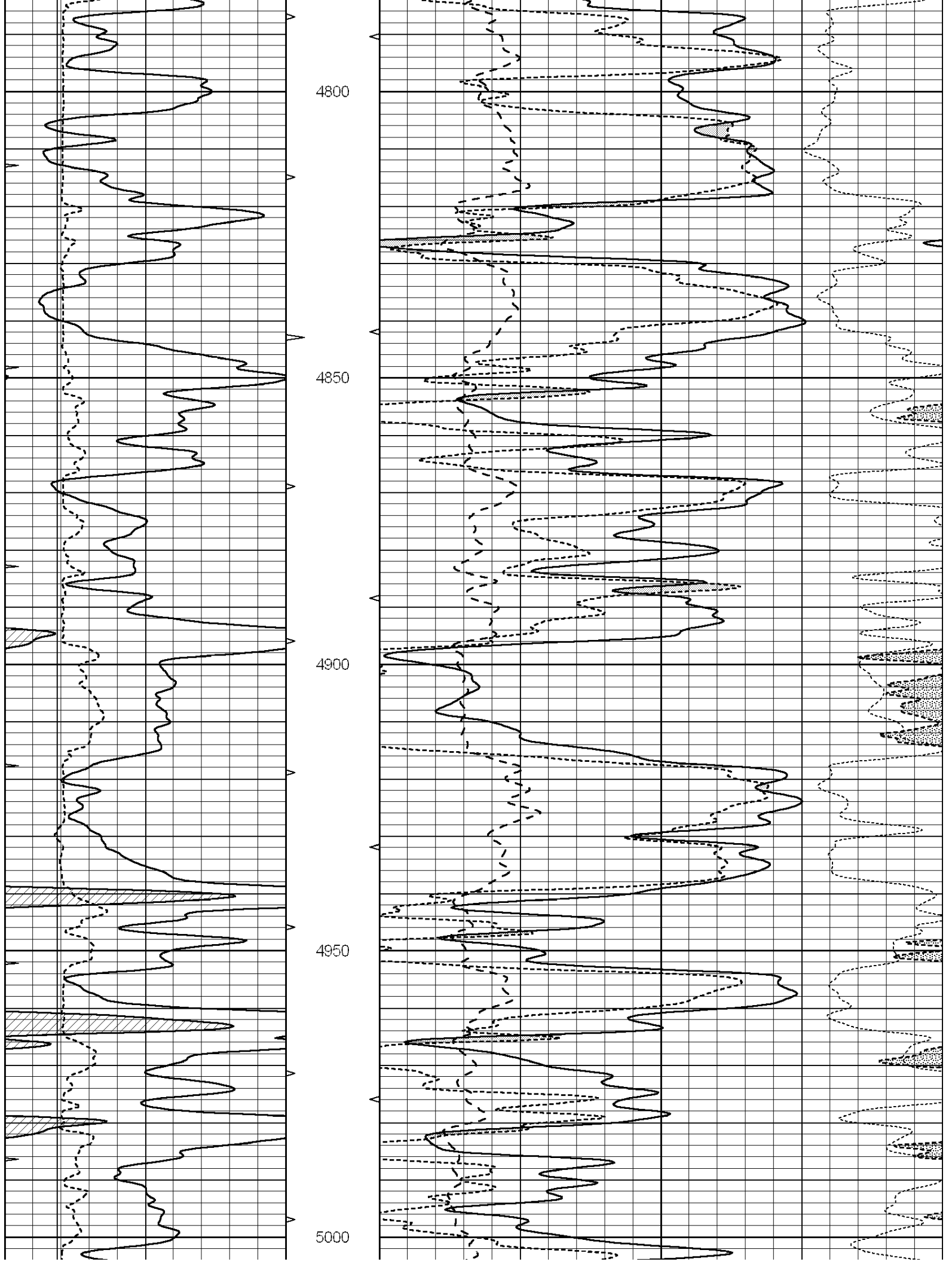
0	GAMMA RAY (GAPI)	150	ABHV	30	COMPENSATED DENSITY (pu)	-10			
6	CALIPER (in)	16	10 (ft3)	0	30	COMPENSATED NEUTRON (pu)	-10		
0	MINMK	20	TBHV	0	PE	10	-0.25	CORRECTION (g/cc)	0.25
			0 (ft3)	10					

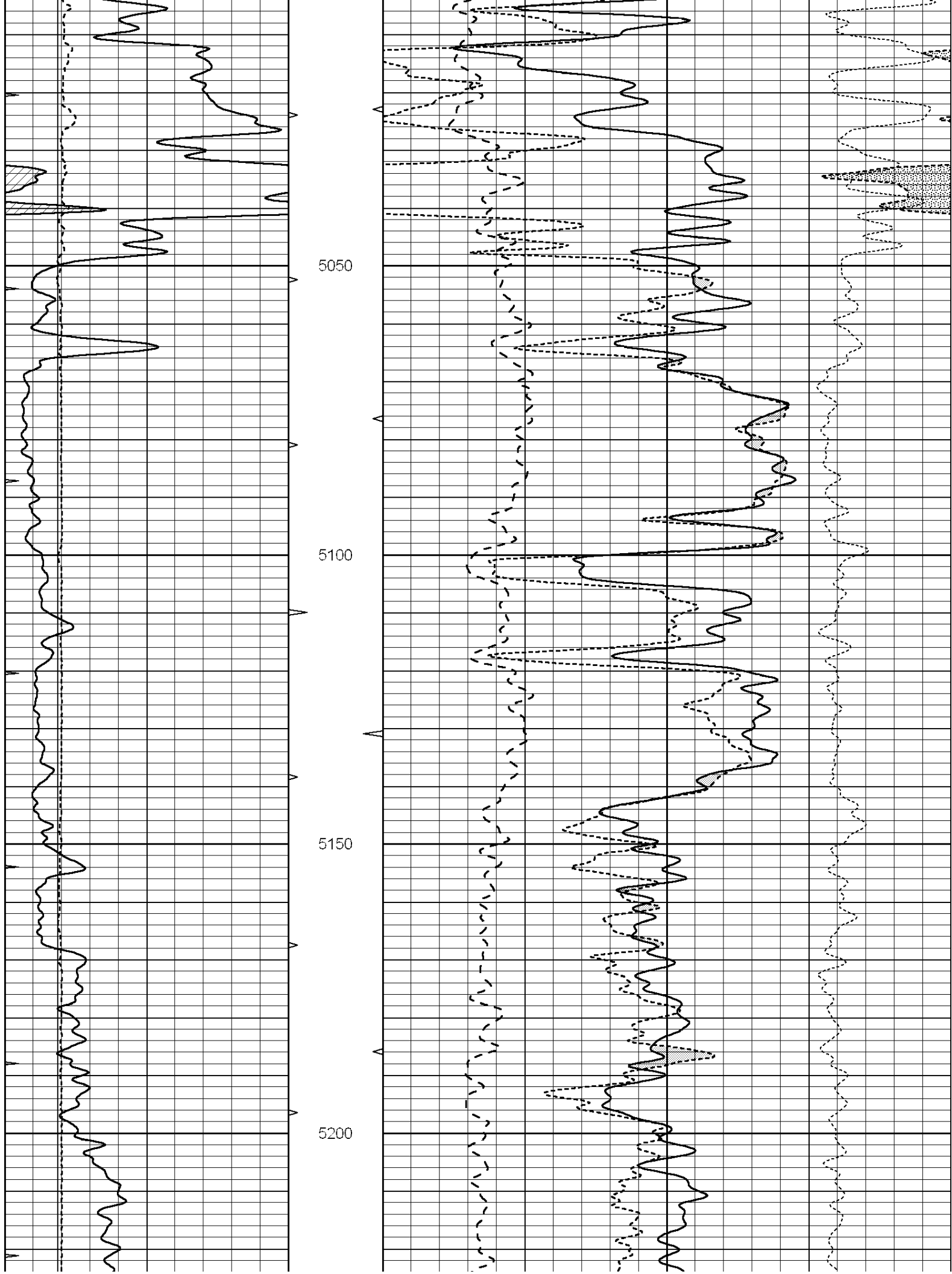


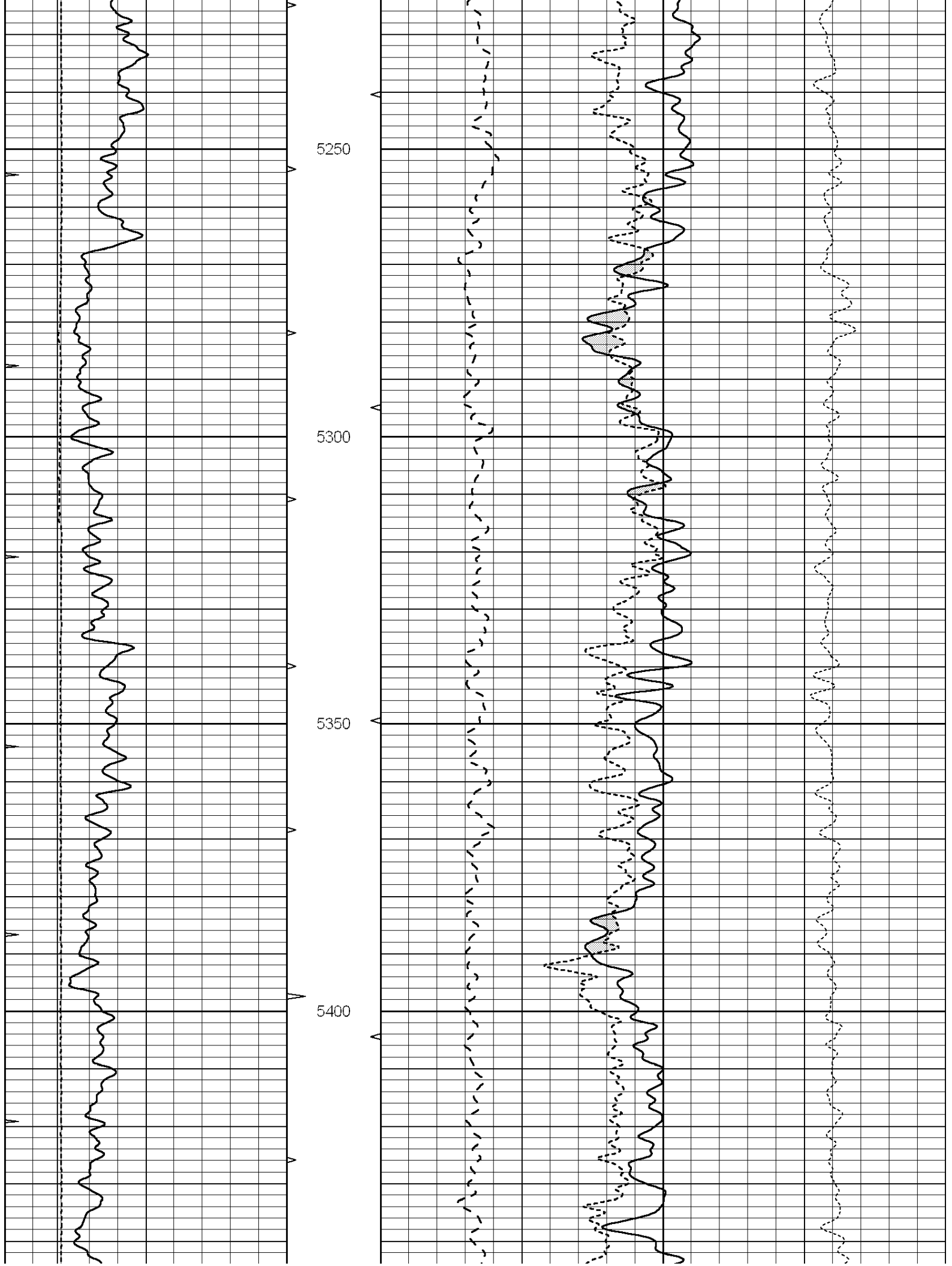


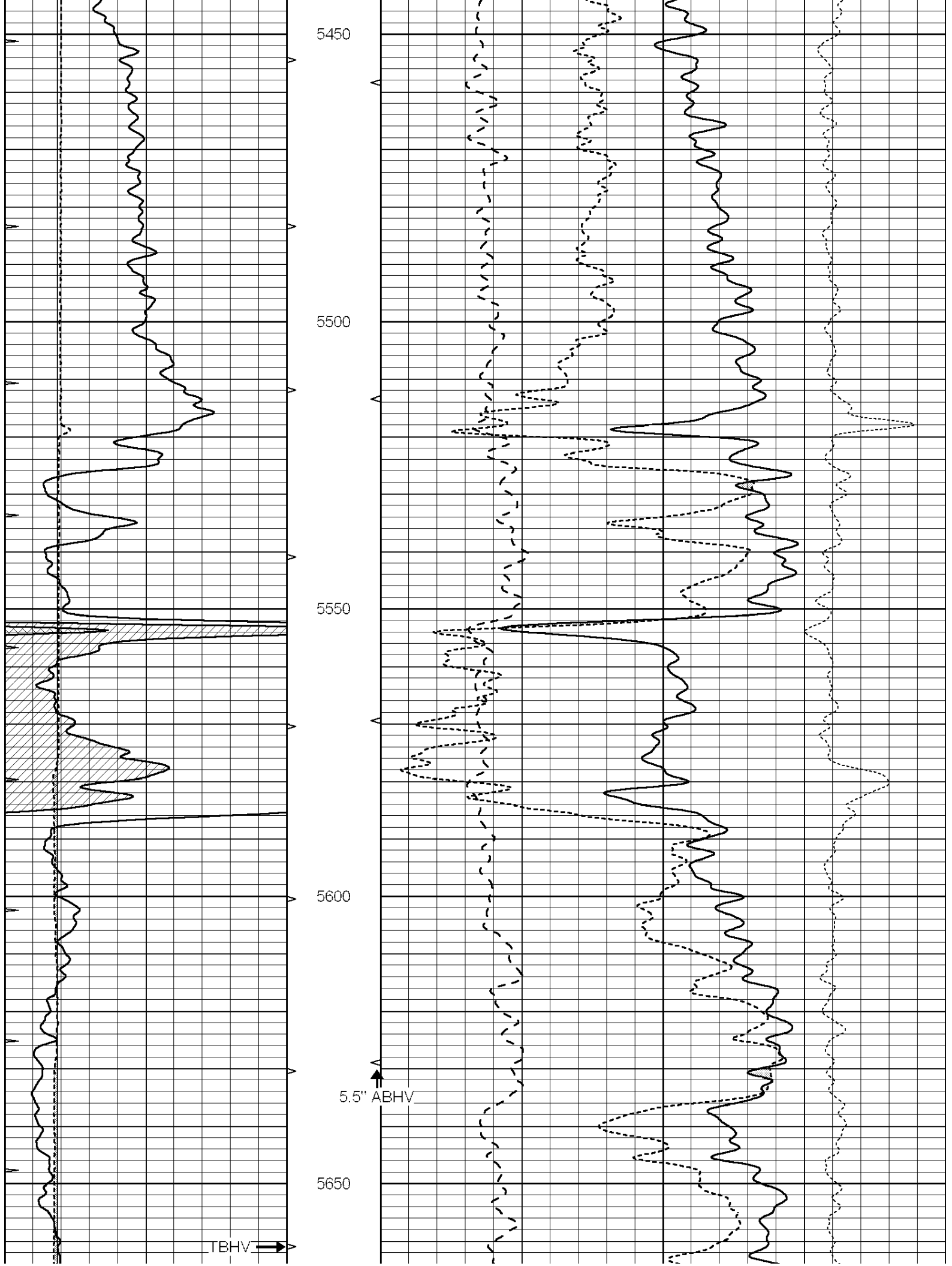


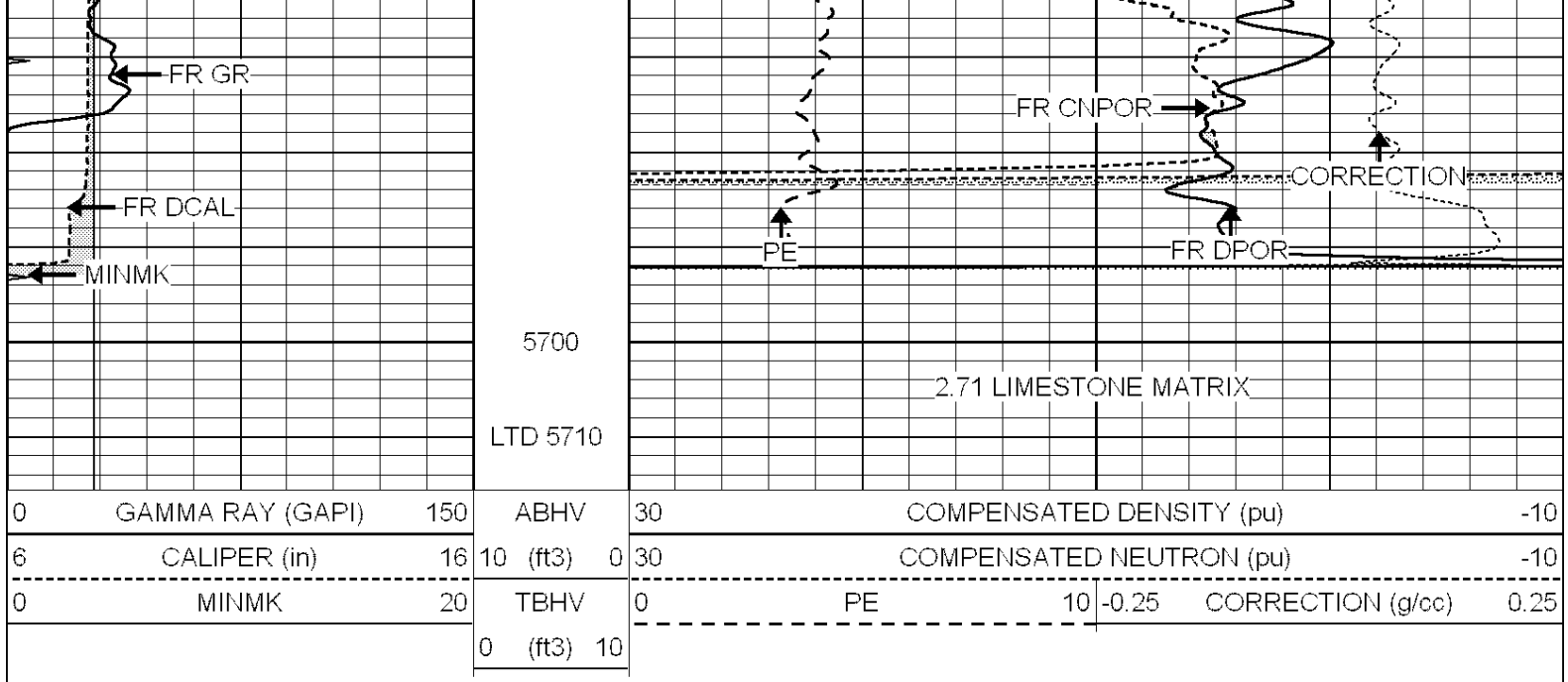






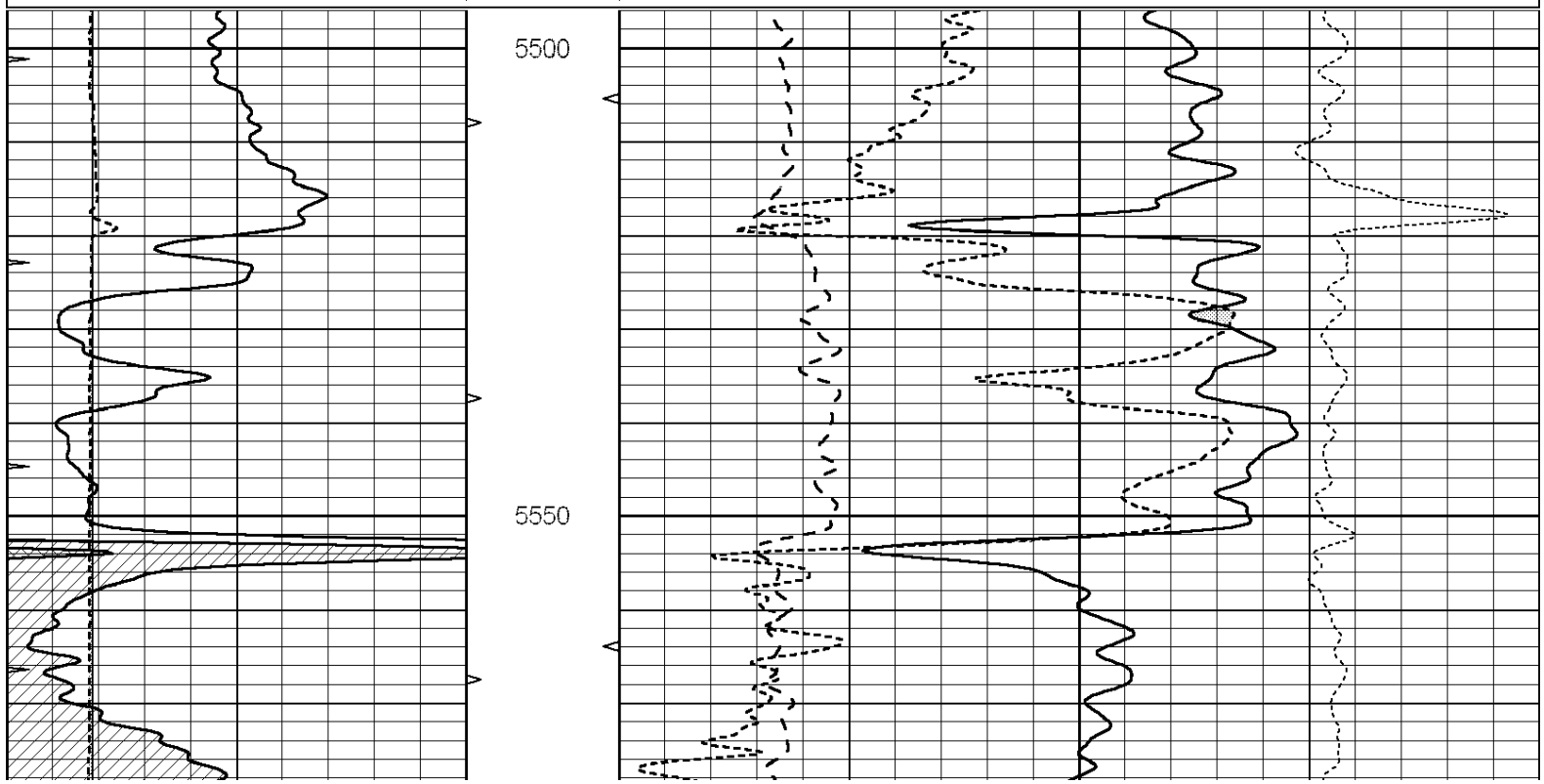
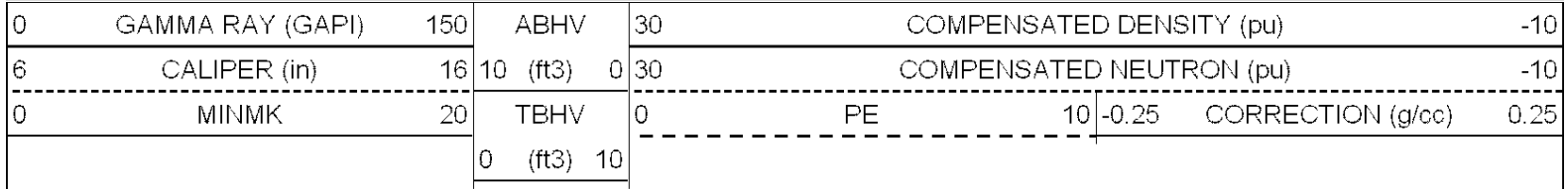


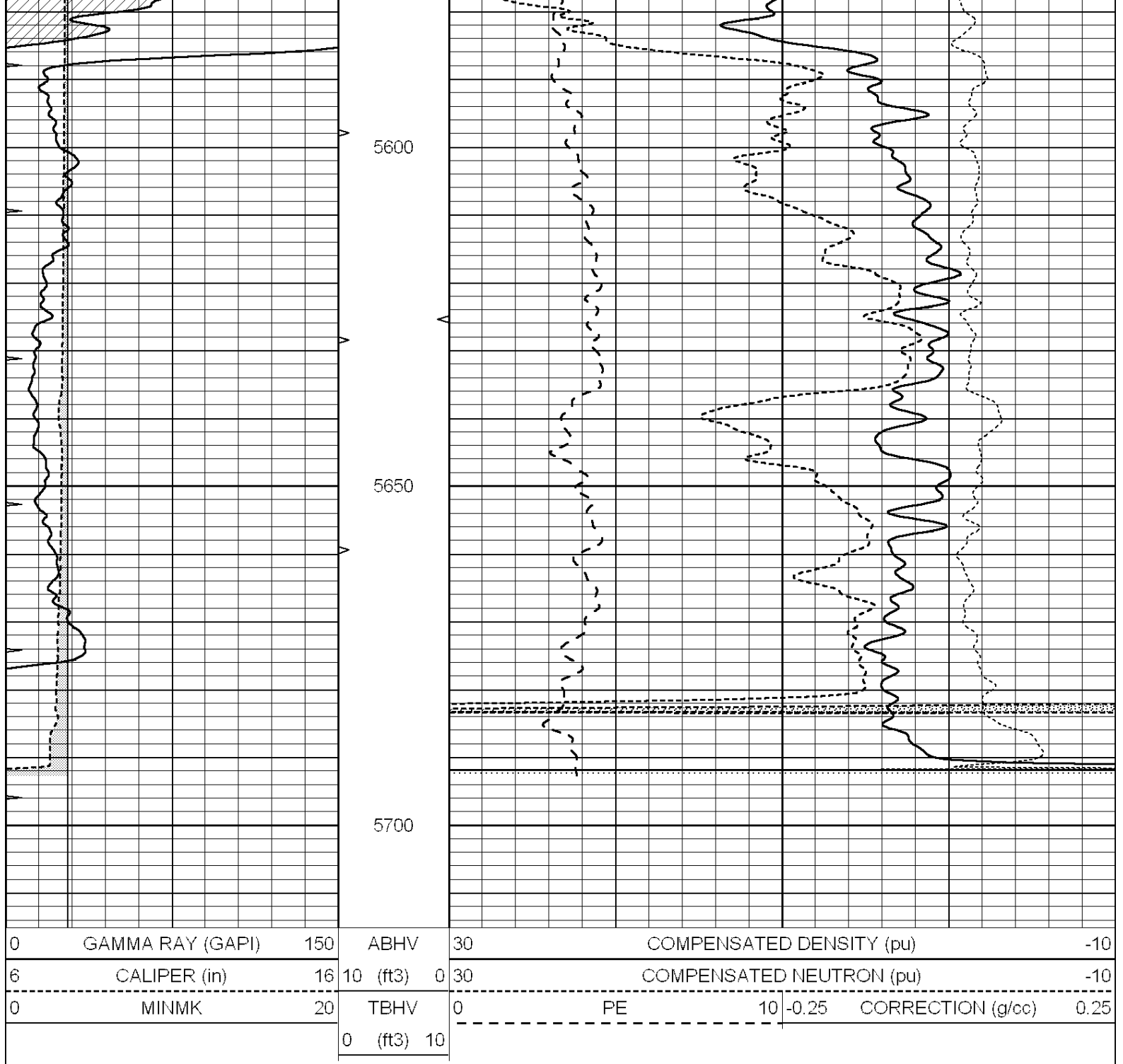




REPEAT SECTION

Database File: 011822pe.db
 Dataset Pathname: pass2.3
 Presentation Format: ldt_neu
 Dataset Creation: Sun Dec 08 01:28:13 2013 by Calc SOC 120430
 Charted by: Depth in Feet scaled 1:240





Calibration Report

Database File: 011822pe.db
 Dataset Pathname: pass3.8
 Dataset Creation: Sun Dec 08 02:06:42 2013

Dual Induction Calibration Report

Serial-Model: DIL4-GEAR
 Surface Cal Performed: Sun Dec 08 00:08:09 2013
 Downhole Cal Performed: Tue Sep 25 17:01:29 2001
 After Survey Verification Performed: Sat Jun 11 16:07:12 2005

Surface Calibration

Readings		References		Results		
Loop:	Air	Loop	Air	Loop	m	b

Deep	0.008	0.666	V	0.000	400.000	mmho/m	570.000	-2.000
Medium	-0.003	0.769	V	0.000	462.500	mmho/m	560.000	-1.000
Internal:	<u>Zero</u>	<u>Cal</u>		<u>Zero</u>	<u>Cal</u>		<u>m</u>	<u>b</u>
Deep	0.013	0.651	V	0.000	400.000	mmho/m	627.541	-8.365
Medium	0.020	0.754	V	0.000	462.500	mmho/m	630.311	-12.549

Downhole Calibration								
	Readings			References			Results	
Internal:	<u>Zero</u>	<u>Cal</u>		<u>Zero</u>	<u>Cal</u>		<u>m</u>	<u>b</u>
Deep	0.000	1.000	mmho/m	0.000	1.000	mmho/m	1.000	0.000
Medium	0.000	1.000	mmho/m	0.000	1.000	mmho/m	1.000	0.000
Shallow	2.525	0.026	V	500.000	2.000	Ohm-m	250.000	-2.500

After Survey Verification								
	Readings			Targets			Results	
Internal:	<u>Zero</u>	<u>Cal</u>		<u>Zero</u>	<u>Cal</u>		<u>m'</u>	<u>b'</u>
Deep	0.000	1.000	mmho/m	0.000	1.000	mmho/m	1.000	0.000
Medium	0.000	1.000	mmho/m	0.000	1.000	mmho/m	1.000	0.000
Shallow	0.000	0.000	Ohm-m	500.000	2.000	Ohm-m	1.000	0.000

Litho Density Calibration Report
Serial: 004N Model: PRB

Master Calibration				Performed Mon Jun 03 09:36:56 2013				
	<u>Background</u>	<u>Magnesium</u>		<u>Aluminum</u>	<u>Sandstone</u>			
Window 1	1417.6	10391.4		3464.6	11537.5			cps
Window 2	1295.0	8959.7		3050.1	9816.4			cps
Window 3	1105.1	5464.2		2051.0	5838.8			cps
Window 4	315.0	317.7		312.9	319.8			cps
Long Space	0.0	7664.6		1755.0	8521.3			cps
Short Space	1.8	1582.4		1040.8	1699.4			cps
Rho		1.7100		2.5900	1.3800			g/cc
Pe		0.0000		2.5700	1.5500			
Rib Angle	: 44.1	Rib Slope	: 0.970	Density/Spine Ratio				: 0.574
Spine Angle	: 74.1	Spine Slope	: 3.519	Spine Intercept				: -17.0

Before Survey Verification				Performed Wed Dec 31 18:00:00 1969				
	<u>Background</u>	<u>Magnesium</u>		<u>Aluminum</u>	<u>Sandstone</u>			
Window 1	0.0	0.0		0.0	0.0			cps
Window 2	0.0	0.0		0.0	0.0			cps
Window 3	0.0	0.0		0.0	0.0			cps
Window 4	0.0	0.0		0.0	0.0			cps
Long Space	0.0	0.0		0.0	0.0			cps
Short Space	0.0	0.0		0.0	0.0			cps
Measured Rho		0.0000		0.0000	0.0000			g/cc
Measured Correction		0.0000		0.0000	0.0000			g/cc
Measured Pe				0.0000	0.0000			

After Survey Verification				Performed Wed Dec 31 18:00:00 1969				
	<u>Background</u>	<u>Magnesium</u>		<u>Aluminum</u>	<u>Sandstone</u>			
Window 1	0.0	0.0		0.0	0.0			cps
Window 2	0.0	0.0		0.0	0.0			cps

Window 3	0.0	0.0	0.0	0.0	cps
Window 4	0.0	0.0	0.0	0.0	cps
Long Space	0.0	0.0	0.0	0.0	cps
Short Space	0.0	0.0	0.0	0.0	cps
Measured Rho		0.0000	0.0000	0.0000	g/cc
Measured Correction		0.0000	0.0000	0.0000	g/cc
Measured Pe			0.0000	0.0000	

Compensated Neutron Calibration Report

Serial Number: 070808
Tool Model: Probe

PRE-SURVEY VERIFICATION

Detector	Readings	Measured	Target
Short Space	cps		
Long Space	cps	pu	pu

POST-SURVEY VERIFICATION

Detector	Readings	Measured	Target
Short Space	cps		
Long Space	cps	pu	pu

Gamma Ray Calibration Report

Serial Number: 070559
Tool Model: OPEN_GR
Performed: Sun Nov 03 21:08:13 2013

Calibrator Value: 1.0 GAPI

Background Reading: 0.0 cps
Calibrator Reading: 1.0 cps

Sensitivity: 0.2800 GAPI/cps