



**COMPLETION
& PRODUCTION
SERVICES CO.**

**DUAL INDUCTION
LOG**

Company DOWNING - NELSON OIL COMPANY, INC.
Well DeWALD #1-13
Field WILDCAT
County RUSH
State KANSAS

Company DOWNING - NELSON OIL COMPANY, INC.
Well DeWALD #1-13
Field WILDCAT
County RUSH State KANSAS

Location: API # : 15-165-22043-0000
1142' FNL & 1611' FEL
SE - SE - NW - NE
SEC 13 TWP 17S RGE 19W
Permanent Datum GROUND LEVEL Elevation 2154
Log Measured From KELLY BUSHING 8' A.G.L.
Drilling Measured From KELLY BUSHING
Other Services
CDL/CNL
MEL/SONIC
Elevation
K.B. 2162
D.F. 2160
G.L. 2154

Date	11/3/13
Run Number	ONE
Depth Driller	4000
Depth Logger	4003
Bottom Logged Interval	4001
Top Log Interval	00
Casing Driller	8 5/8" @ 1364'
Casing Logger	1364
Bit Size	7 7/8"
Type Fluid in Hole	CHEMICAL MUD
Density / Viscosity	9.2/56
pH / Fluid Loss	9.5/10.4
Source of Sample	FLOWLINE
Rim @ Meas. Temp	.800 @ 70F
Rmf @ Meas. Temp	.600 @ 70F
Rmc @ Meas. Temp	.960 @ 70F
Source of Rmf / Rmc	MEASUREMENT
Rim @ BHT	.483 @ 116F
Time Circulation Stopped	2.5 HOURS
Time Logger on Bottom	9:30 P.M.
Maximum Recorded Temperature	116F
Equipment Number	4854
Location	HAYS, KANSAS
Recorded By	JEFF LUEBBERS
Witnessed By	AL DOWNING
	MARC DOWNING
	RON NELSON

<<< Fold Here >>>

All interpretations are opinions based on inferences from electrical or other measurements and we cannot and do not guarantee the accuracy or correctness of any interpretation, and we shall not, except in the case of gross or willful negligence on our part, be liable or responsible for any loss, costs, damages, or expenses incurred or sustained by anyone resulting from any interpretation made by any of our officers, agents or employees. These interpretations are also subject to our general terms and conditions set out in our current Price Schedule.

Comments

THANK YOU FOR USING "NABORS" HAYS, KANSAS (785) 628-6395
DIRECTIONS
LIEBENTHAL, KS., S. TO BLKTOP, 3W. TO "RD. 220", 4 1/2S., W. INTO JUST PAST FARM DRIVE.
FOLLOW TRAIL N. & W.



MAIN SECTION

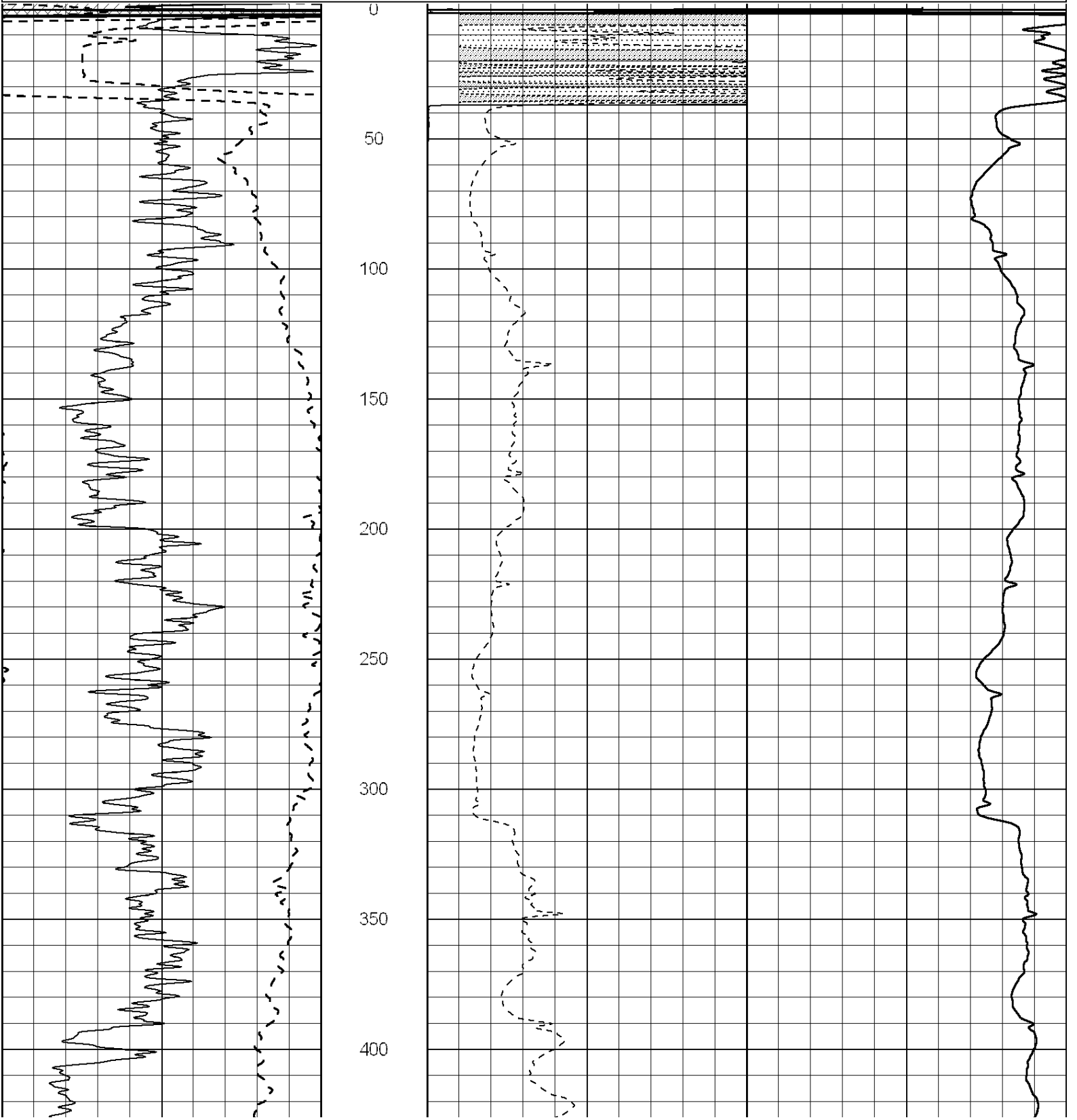
Database File: 011802ddn.db
 Dataset Pathname: pass3.5
 Presentation Format: dil2
 Dataset Creation: Sun Nov 03 22:48:24 2013 by Calc SOC 120430
 Charted by: Depth in Feet scaled 1:600

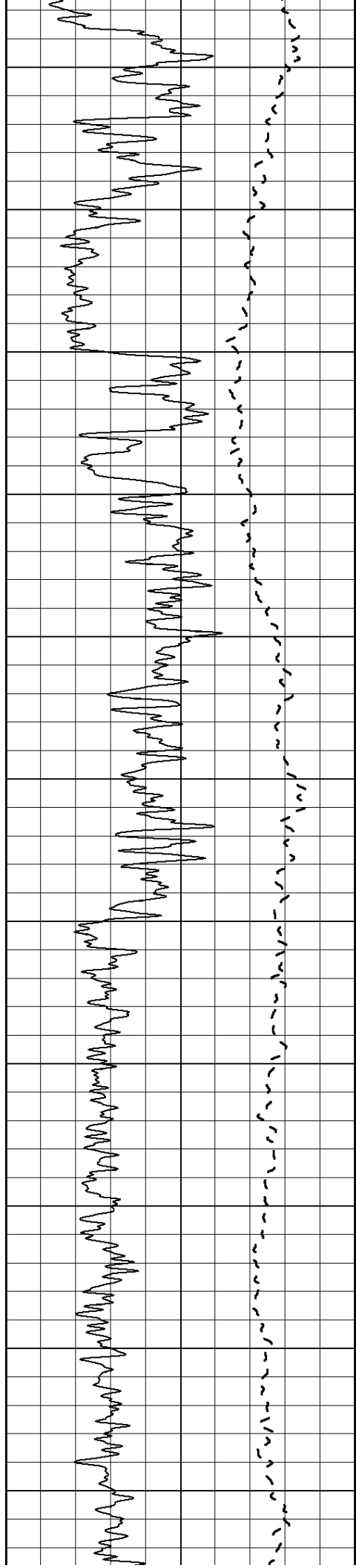
0	Gamma Ray (GAPI)	150
-100	SP (mV)	100

0	RLL3 (Ohm-m)	50
0	RILD (Ohm-m)	50

1000	CILD (mmho/m)	0
------	---------------	---

50	RILD X10 (Ohm-m)	500
50	RLL3 X10 (Ohm-m)	500





450

500

550

600

650

700

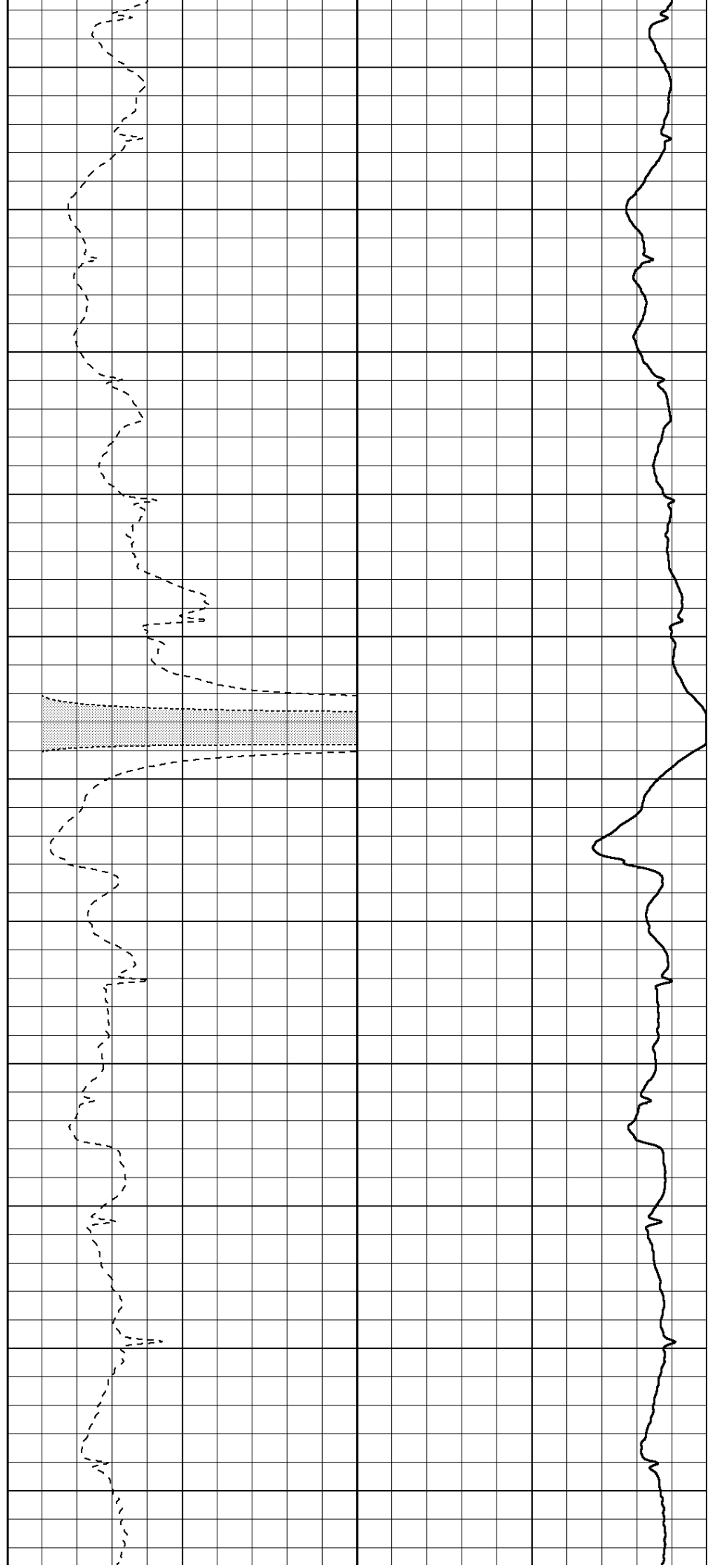
750

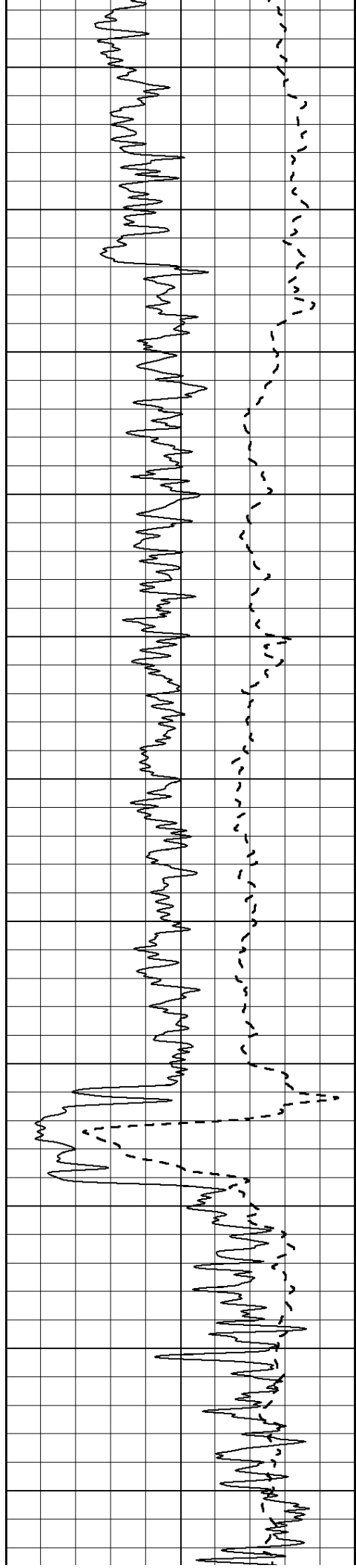
800

850

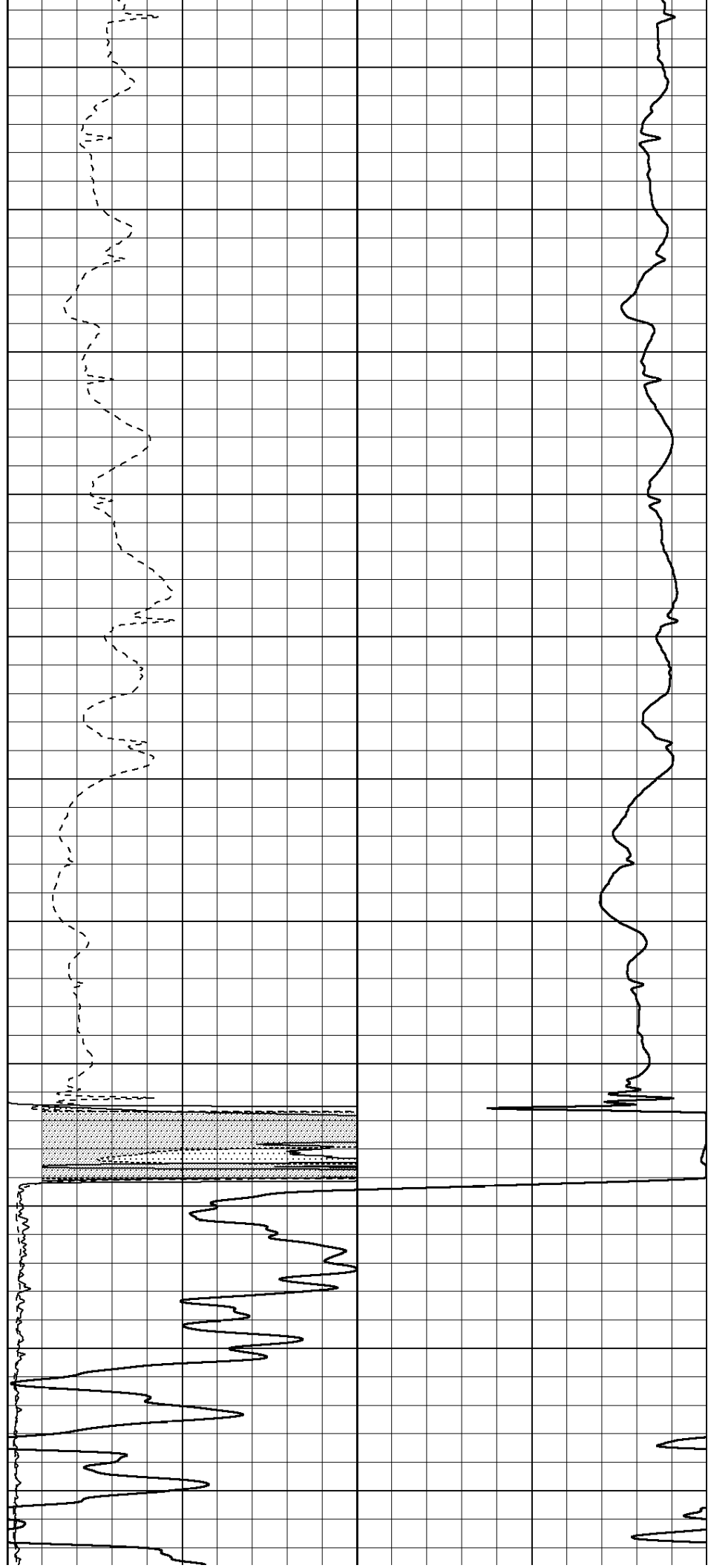
900

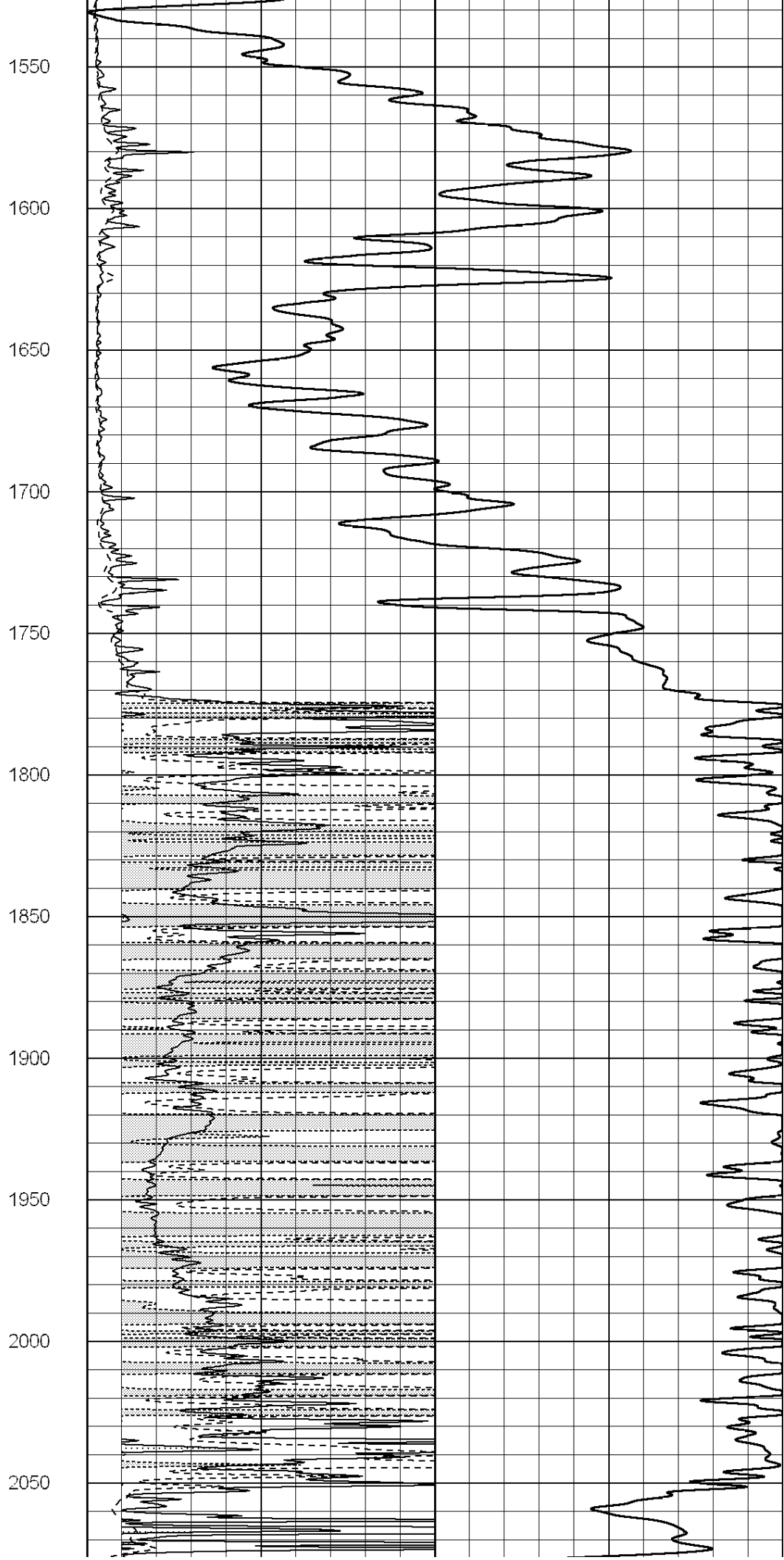
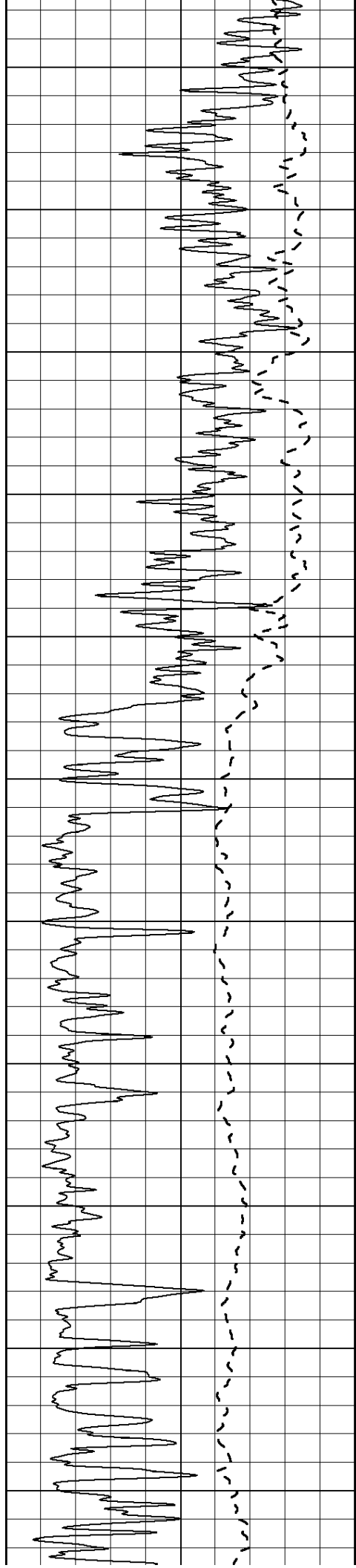
950

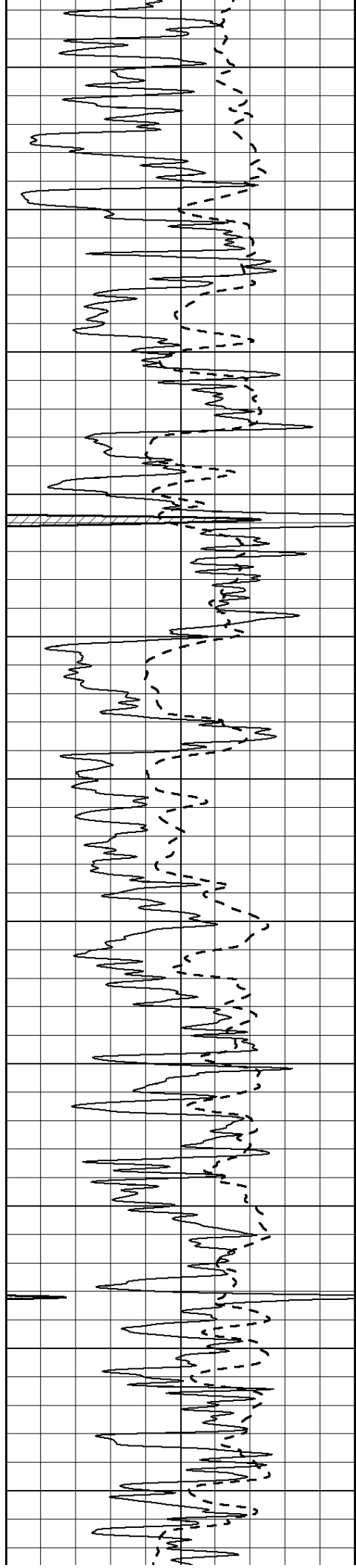




1000
1050
1100
1150
1200
1250
1300
1350
1400
1450
1500







2100

2150

2200

2250

2300

2350

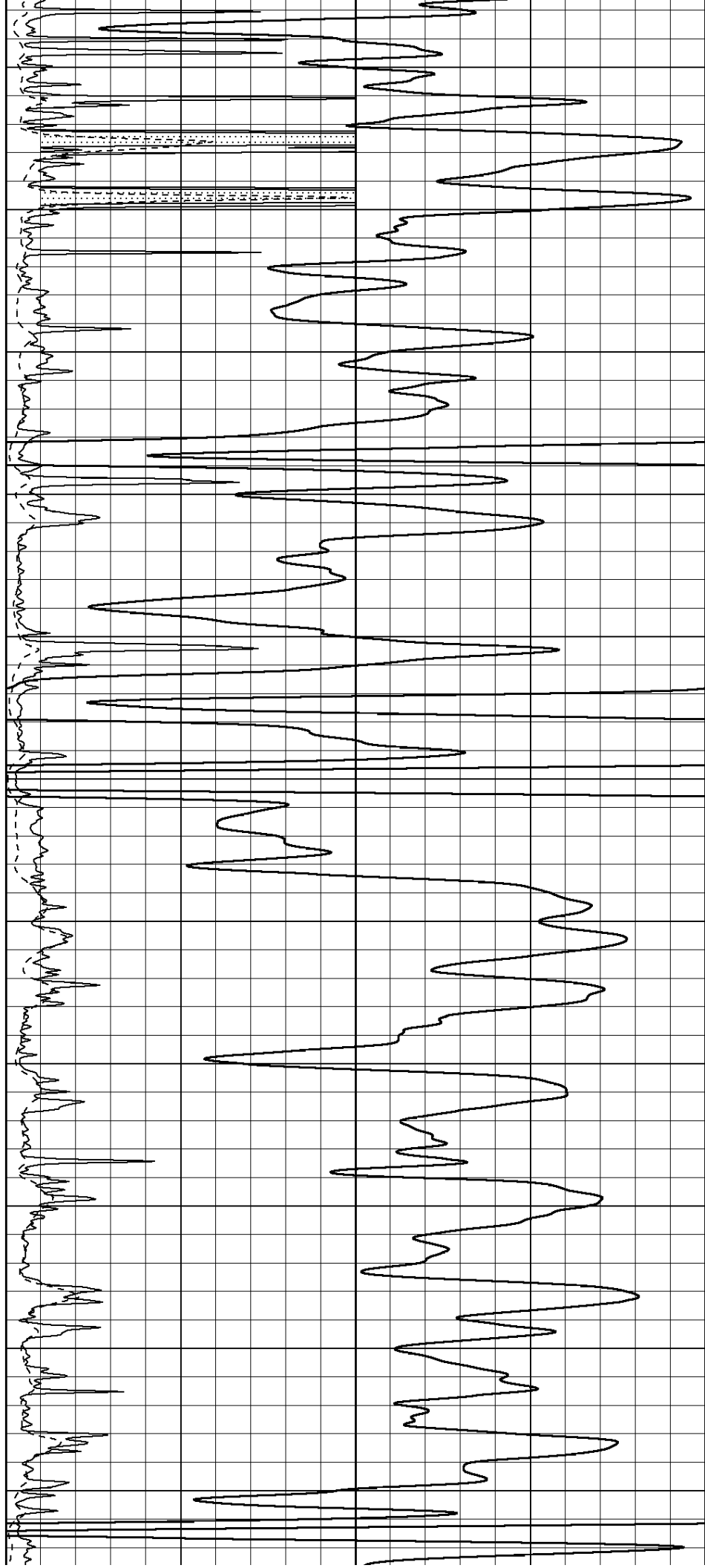
2400

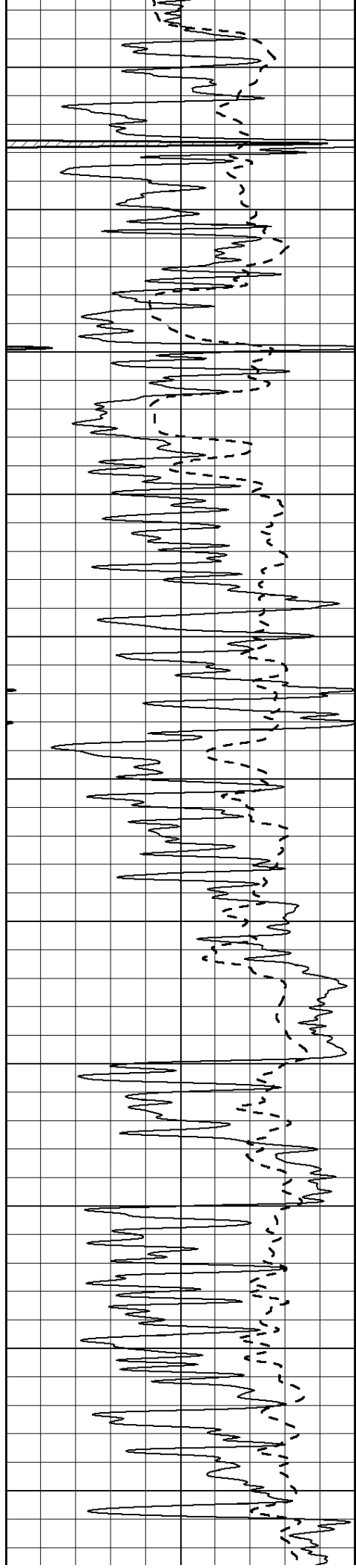
2450

2500

2550

2600





2650

2700

2750

2800

2850

2900

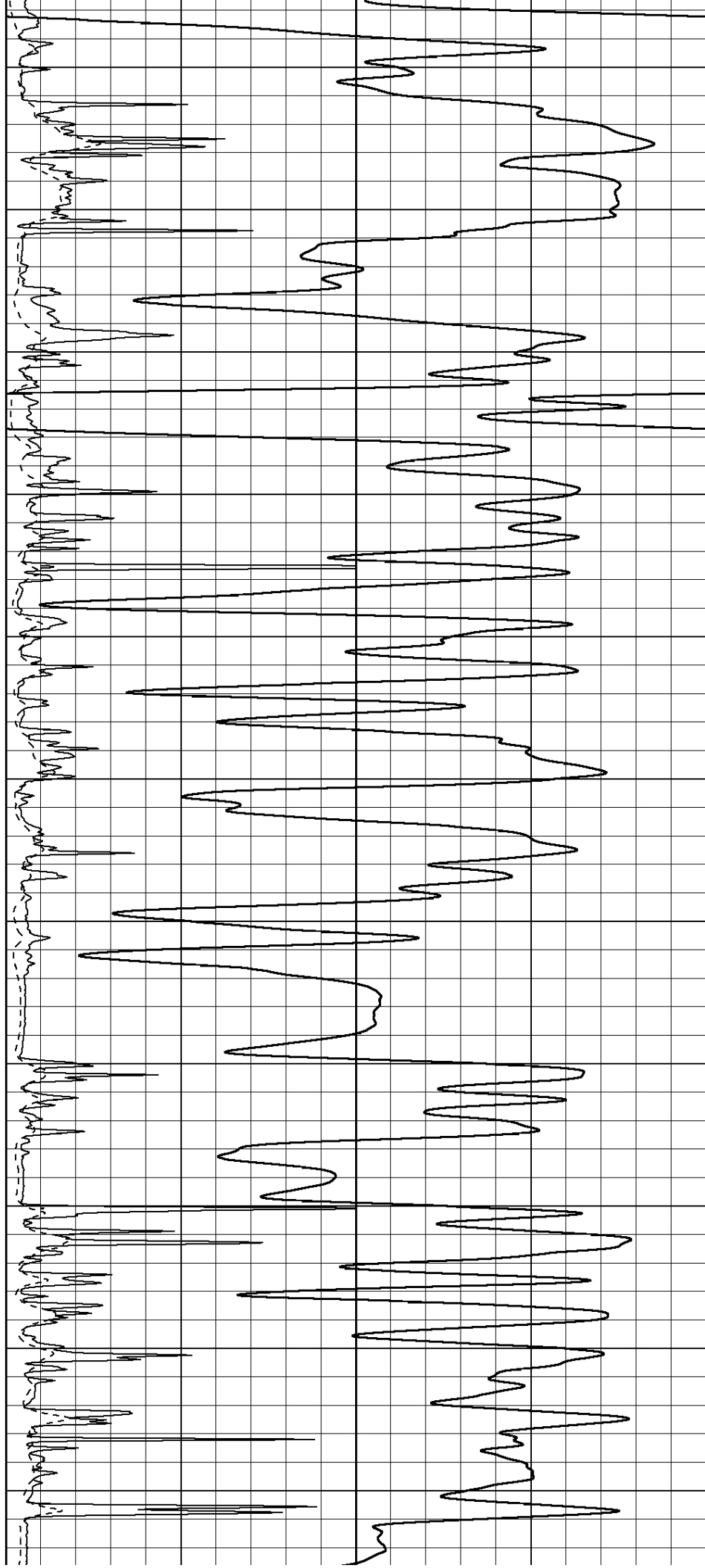
2950

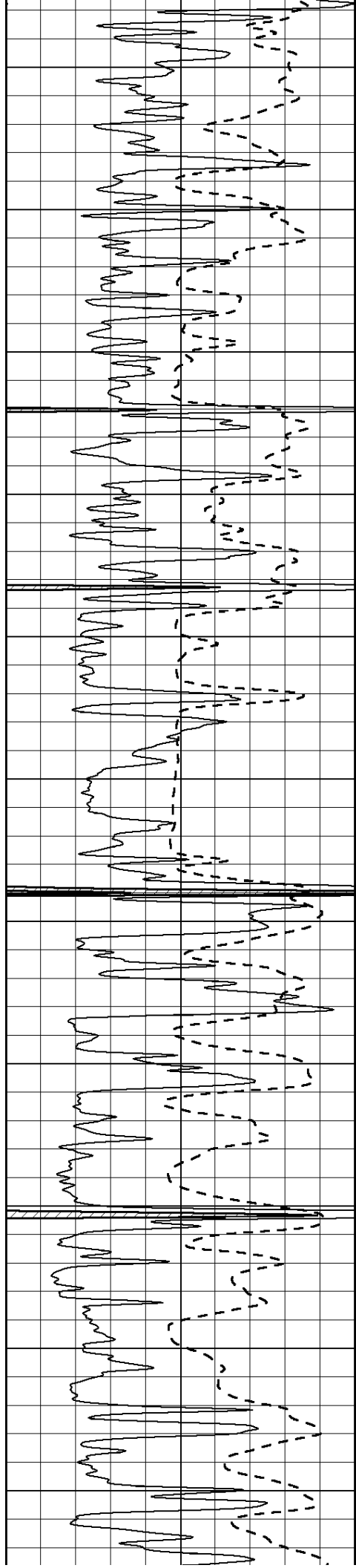
3000

3050

3100

3150





3200

3250

3300

3350

3400

3450

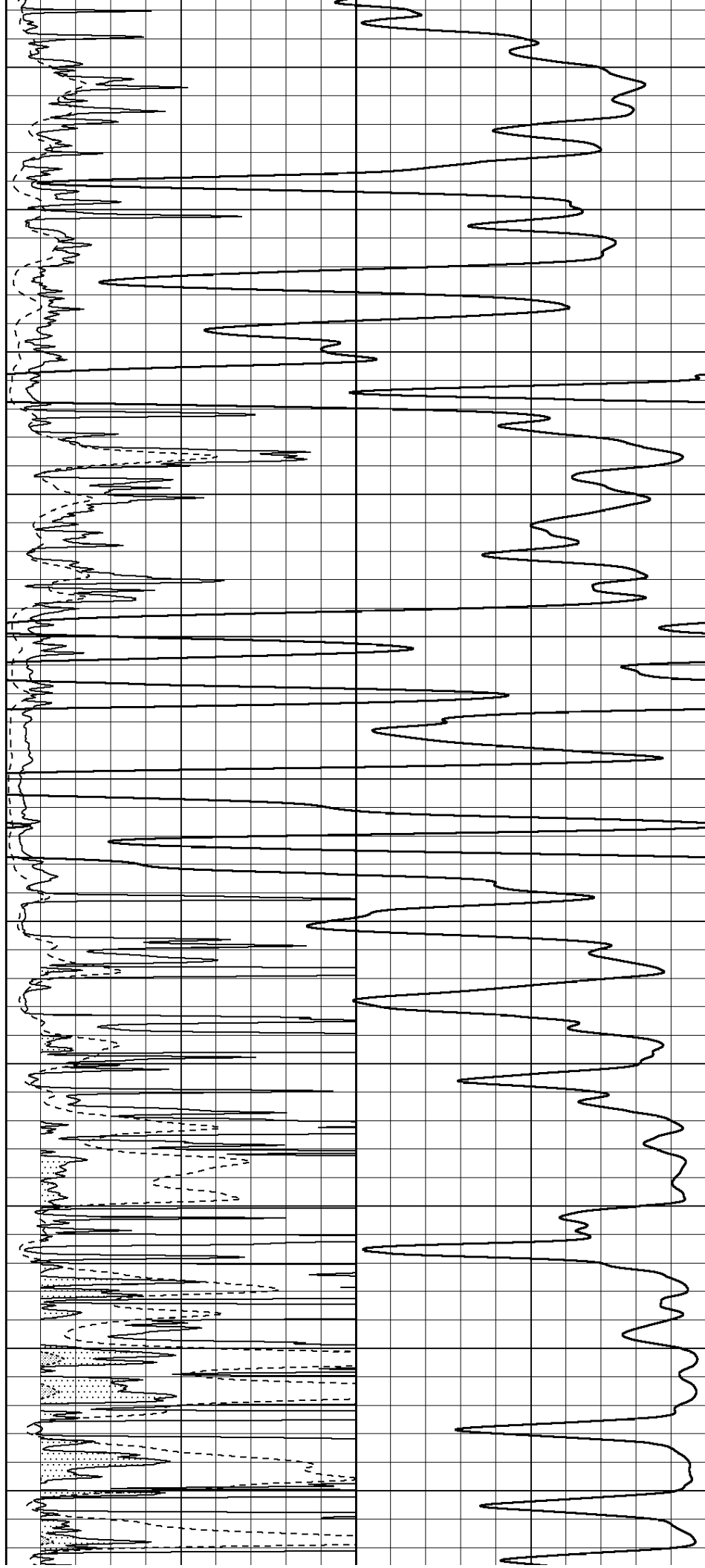
3500

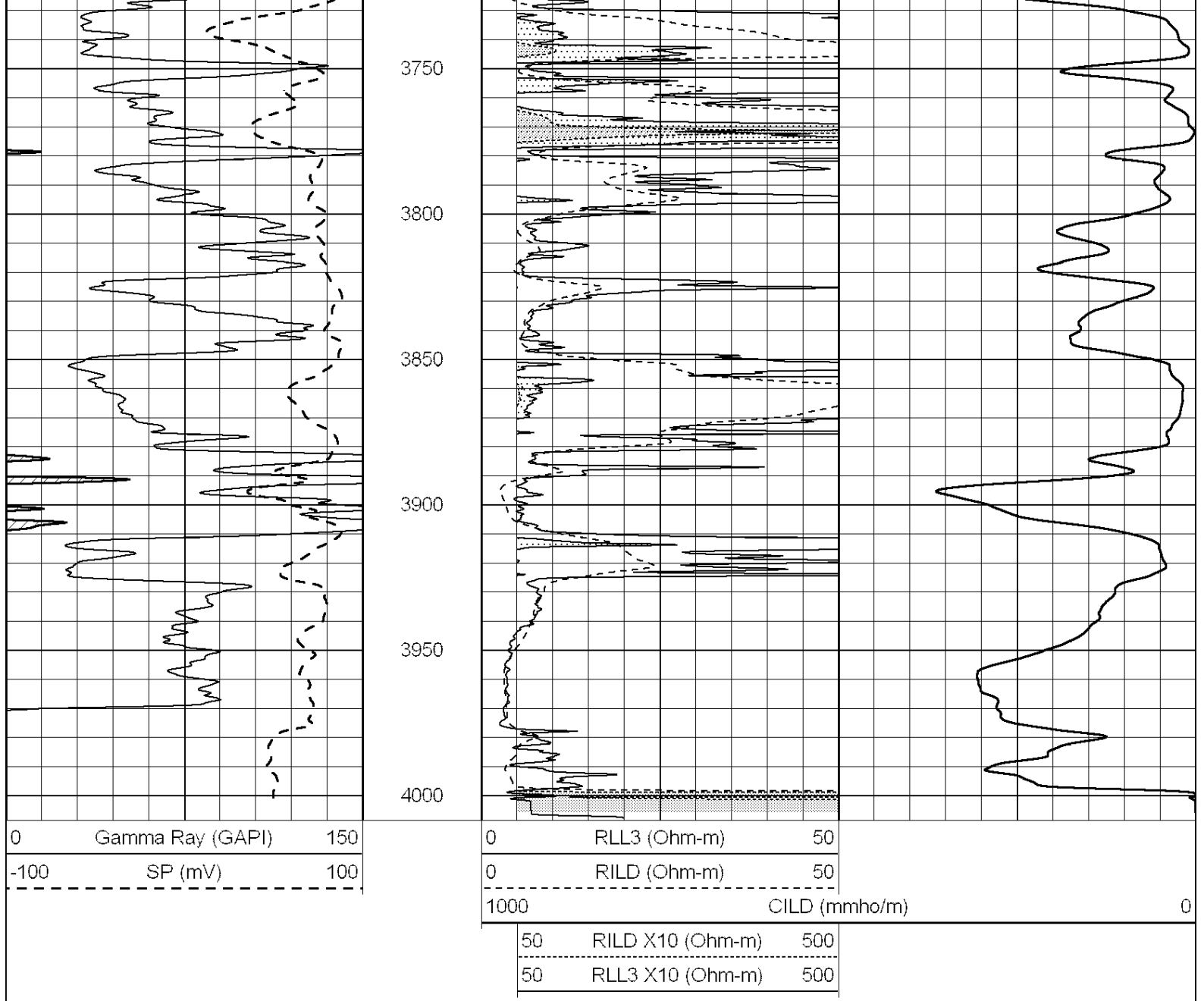
3550

3600

3650

3700



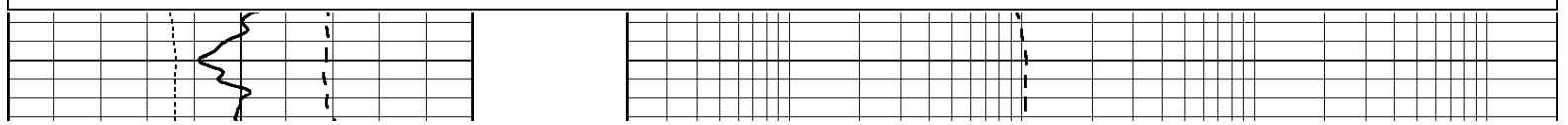


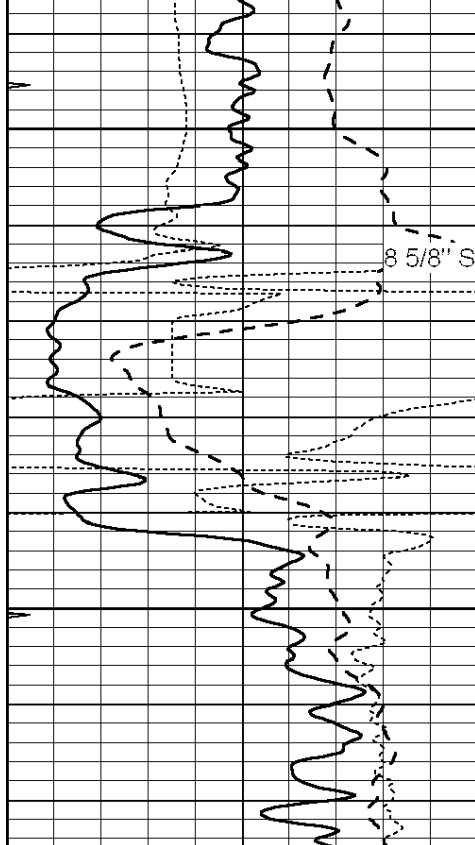
NABORS
COMPLETION & PRODUCTION SERVICES CO.

ANHYDRITE

Database File: 011802ddn.db
 Dataset Pathname: pass3.6
 Presentation Format: _dil
 Dataset Creation: Sun Nov 03 22:48:43 2013 by Calc SOC 120430
 Charted by: Depth in Feet scaled 1:240

0	GAMMA RAY (GAPI)	150	0.2	SHALLOW GUARD (Ohm-m)	2000
-100	SP (mV)	100	0.2	DEEP INDUCTION (Ohm-m)	2000
-250	Rxo/Rt	50	0.2	MEDIUM INDUCTION (Ohm-m)	2000
0	MINMK	20			



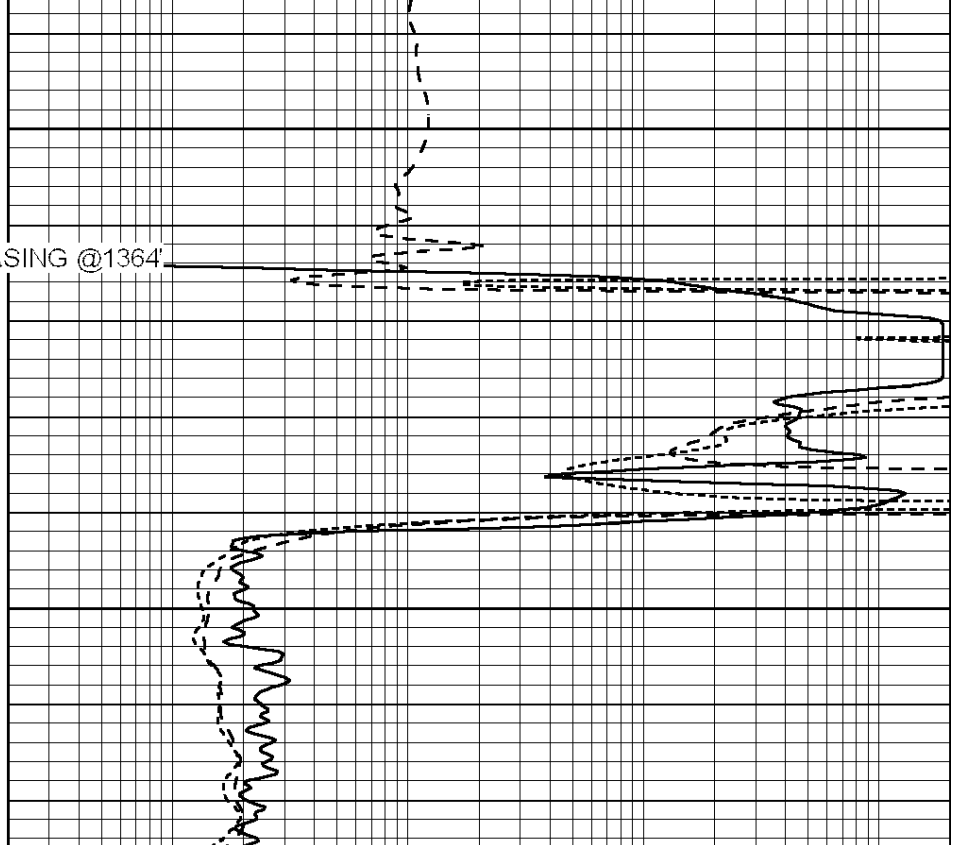


1350

8 5/8" SURFACE CASING @1364'

1400

0	GAMMA RAY (GAPI)	150
-100	SP (mV)	100
-250	Rxo/Rt	50
0	MINMK	20



0.2	SHALLOW GUARD (Ohm-m)	2000
0.2	DEEP INDUCTION (Ohm-m)	2000
0.2	MEDIUM INDUCTION (Ohm-m)	2000

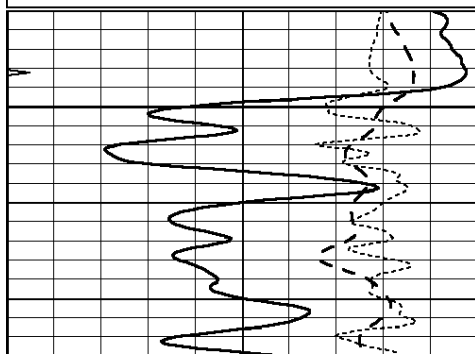


MAIN SECTION

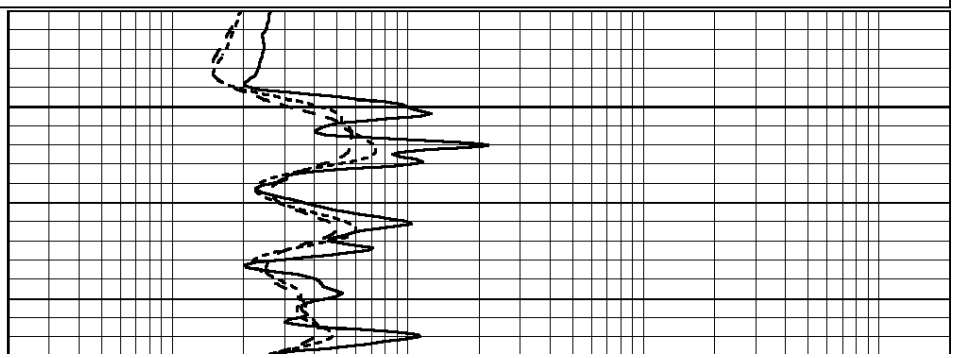
Database File: 011802ddn.db
 Dataset Pathname: pass3.5
 Presentation Format: dil
 Dataset Creation: Sun Nov 03 22:48:24 2013 by Calc SOC 120430
 Charted by: Depth in Feet scaled 1:240

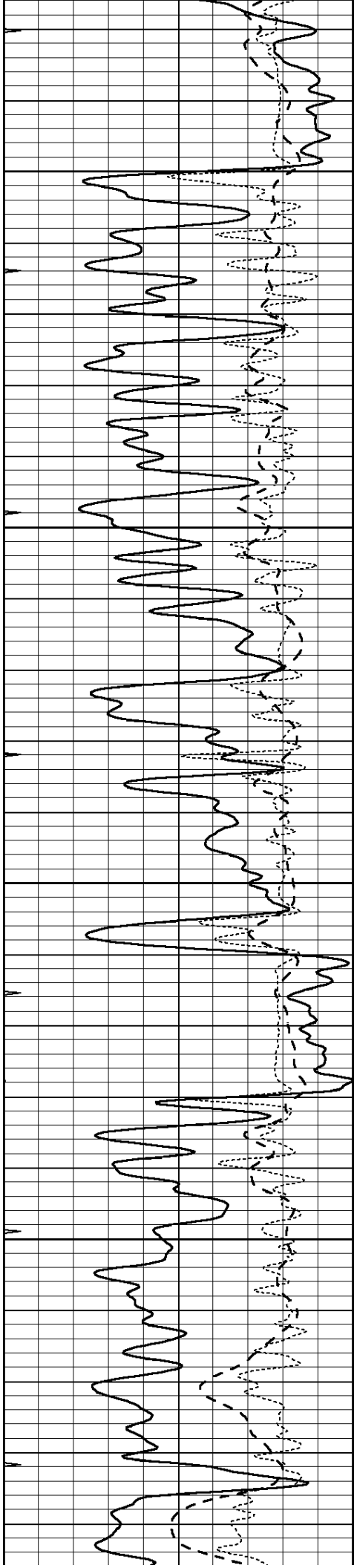
0	GAMMA RAY (GAPI)	150
-100	SP (mV)	100
-250	Rxo/Rt	50
0	MINMK	20

0.2	SHALLOW GUARD (Ohm-m)	2000
0.2	DEEP INDUCTION (Ohm-m)	2000
0.2	MEDIUM INDUCTION (Ohm-m)	2000



3000



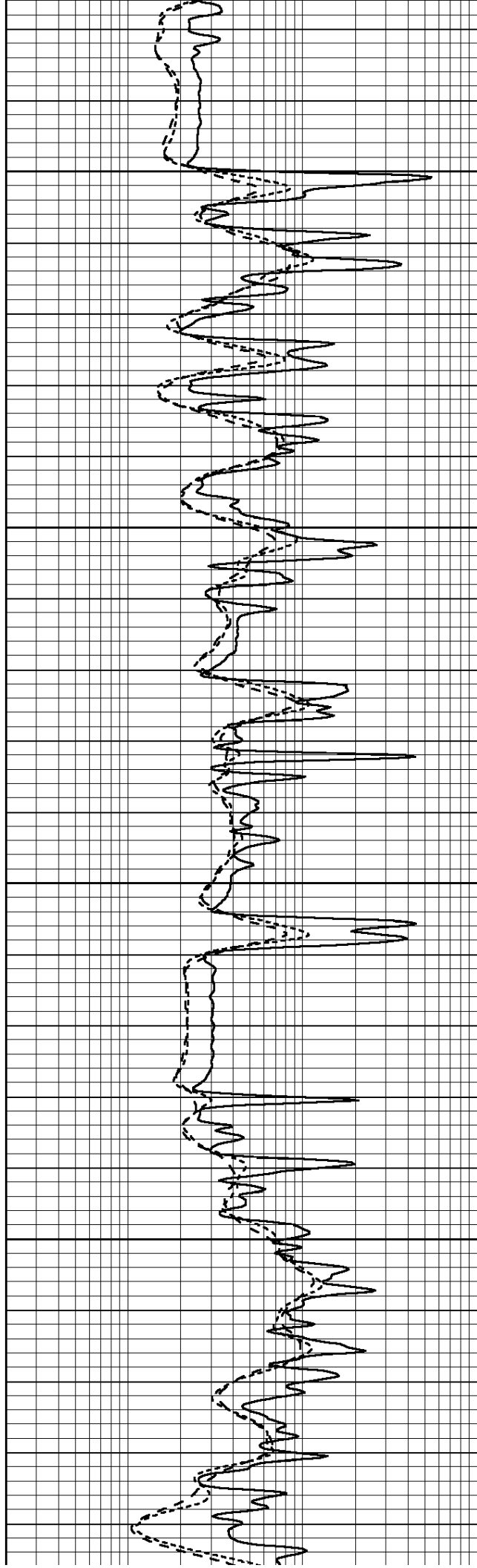


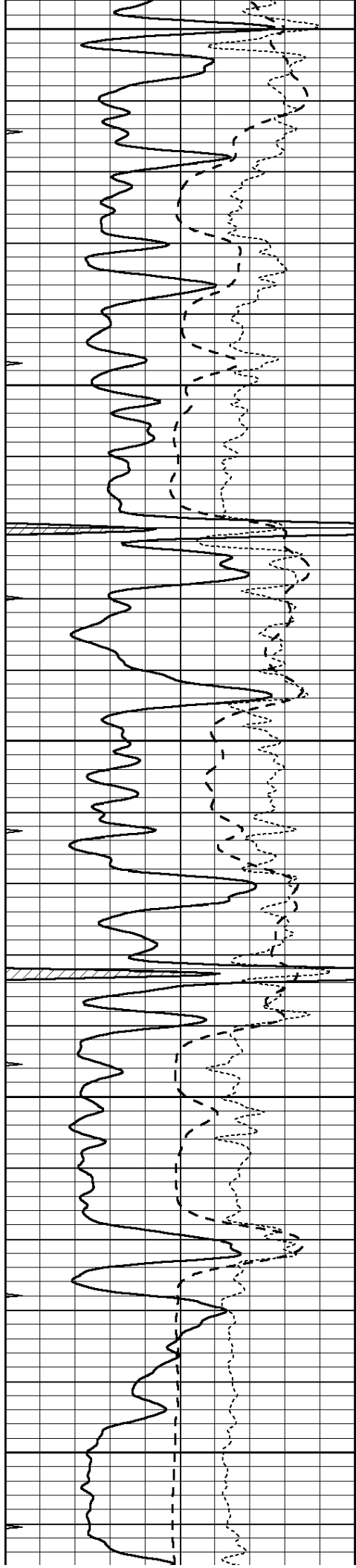
3050

3100

3150

3200





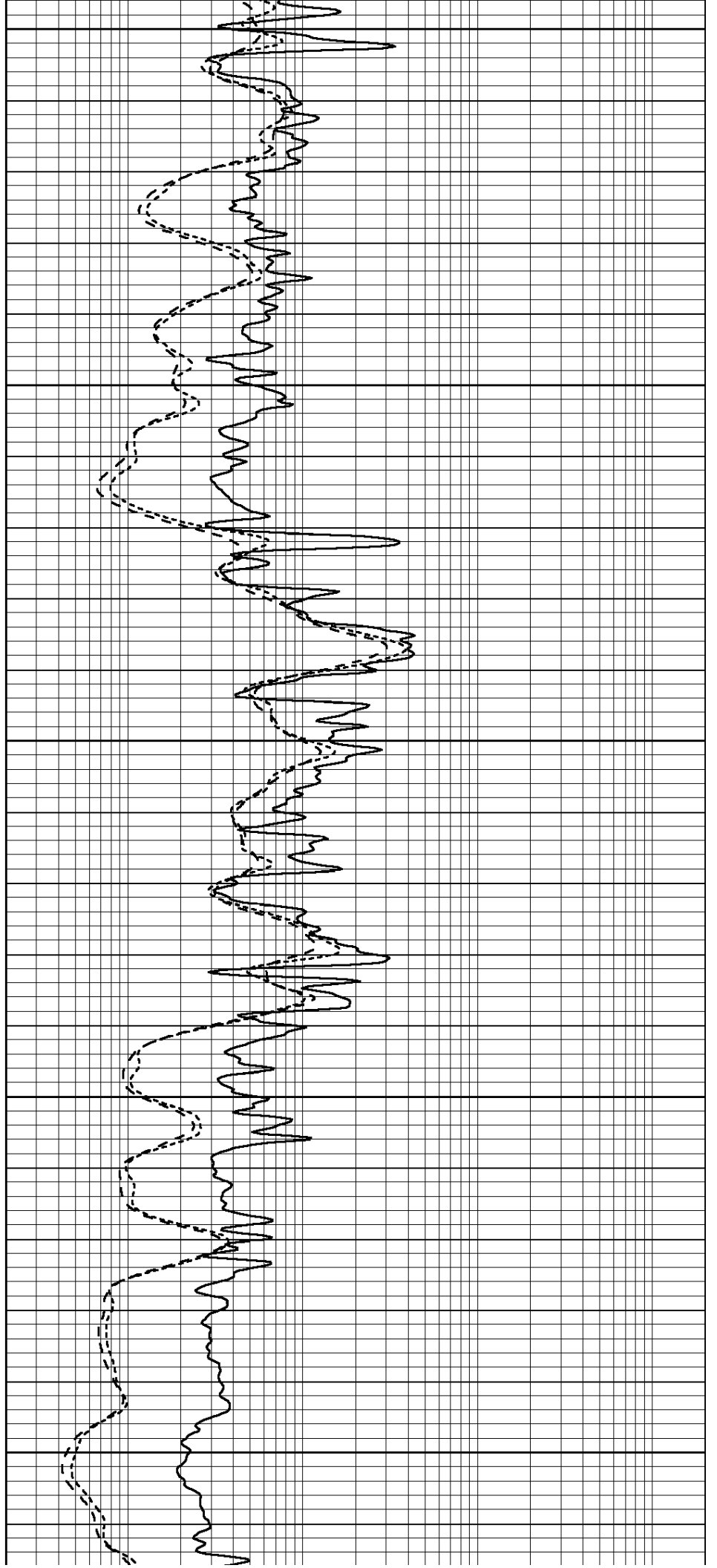
3250

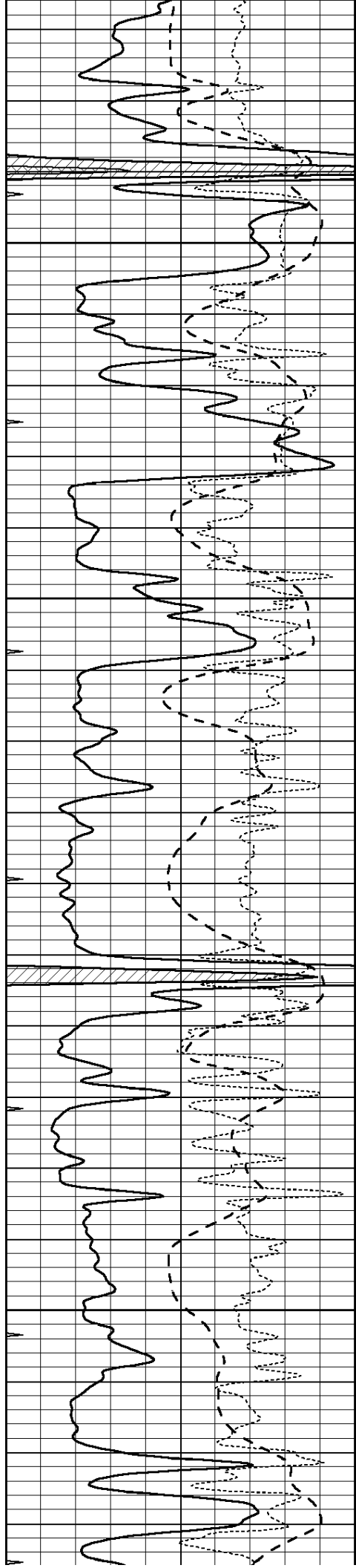
3300

3350

3400

3450



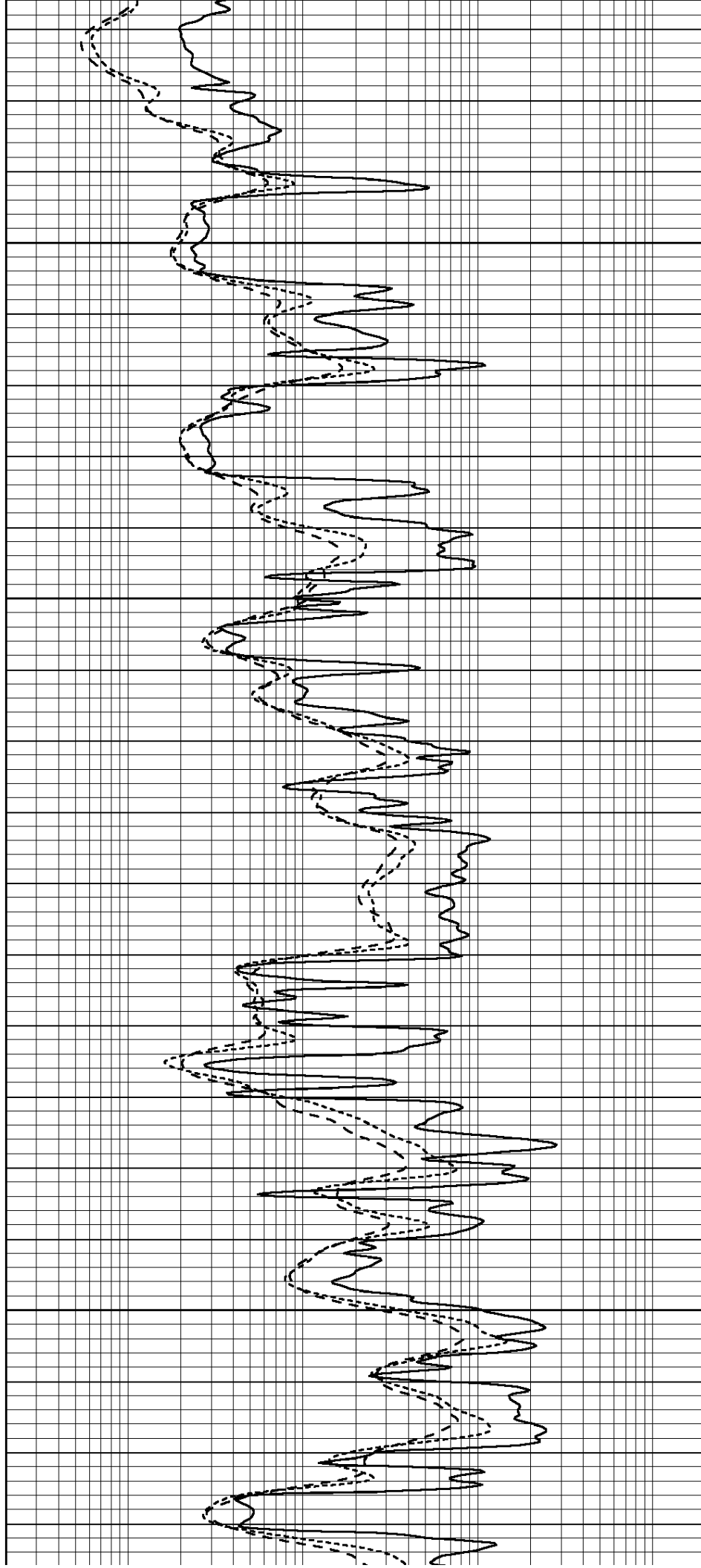


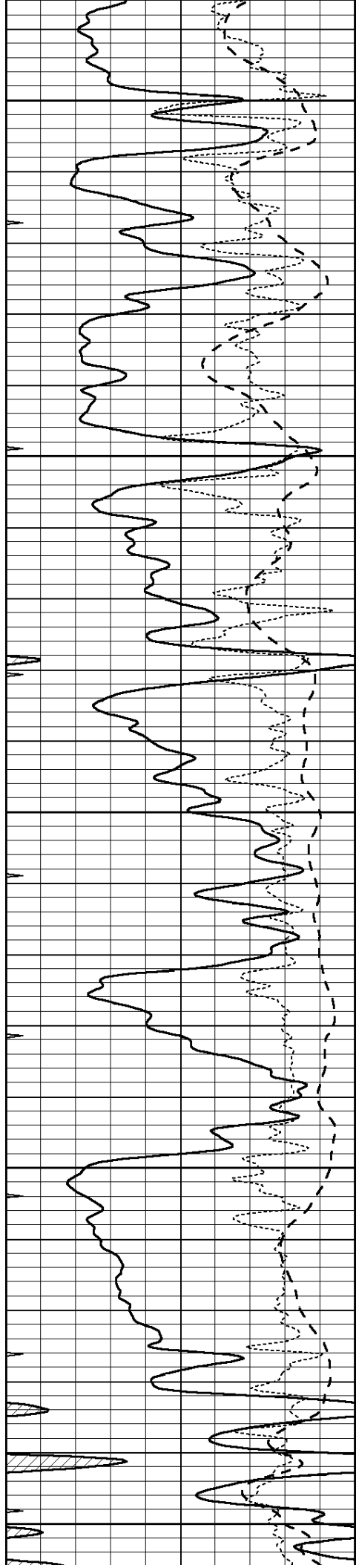
3500

3550

3600

3650





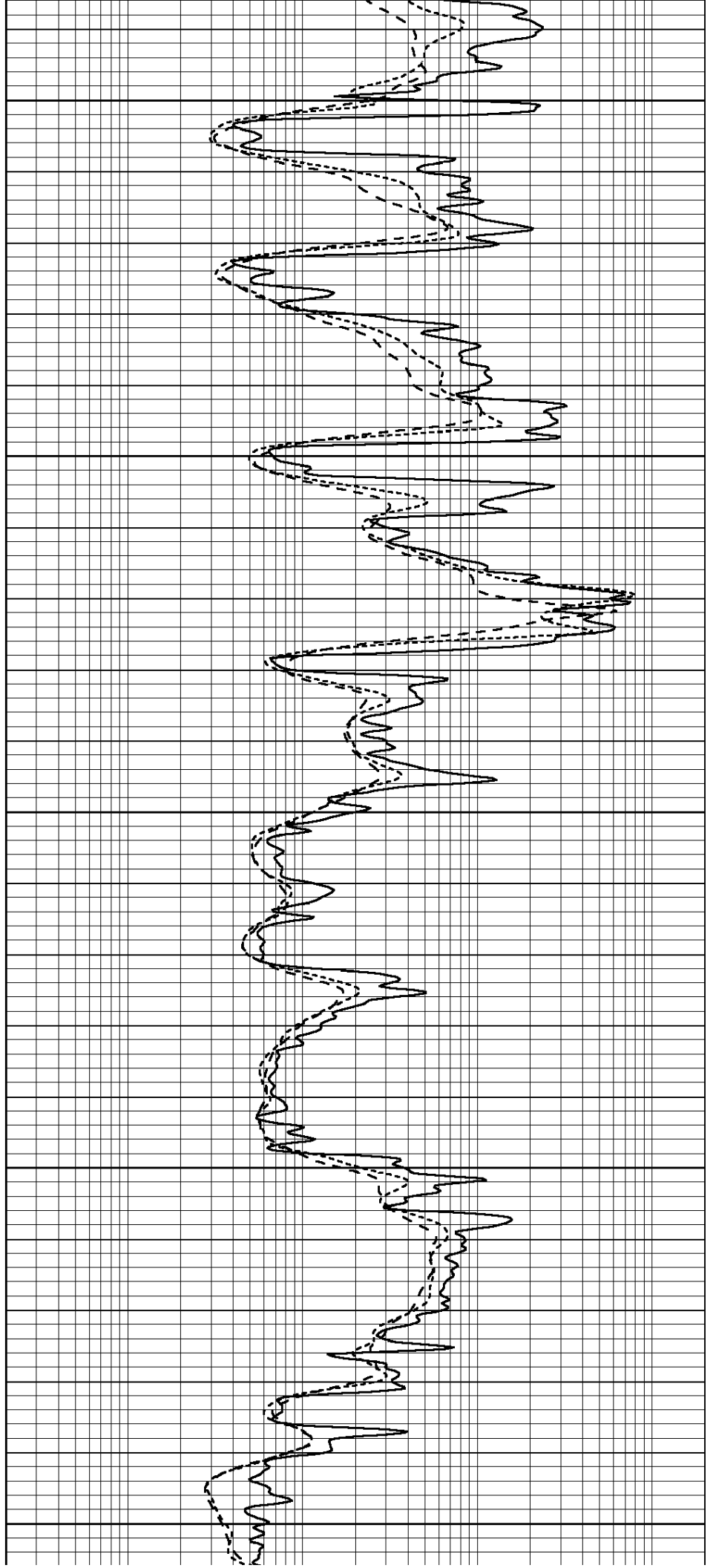
3700

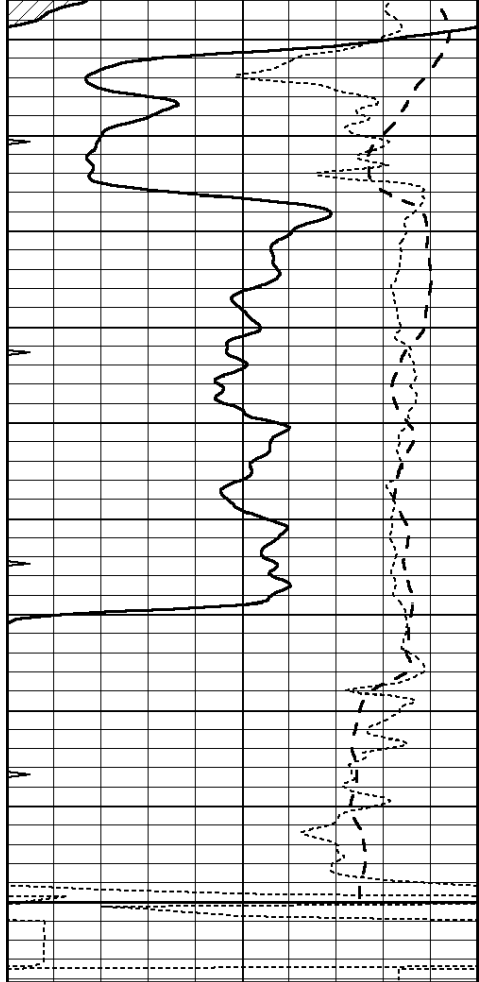
3750

3800

3850

3900

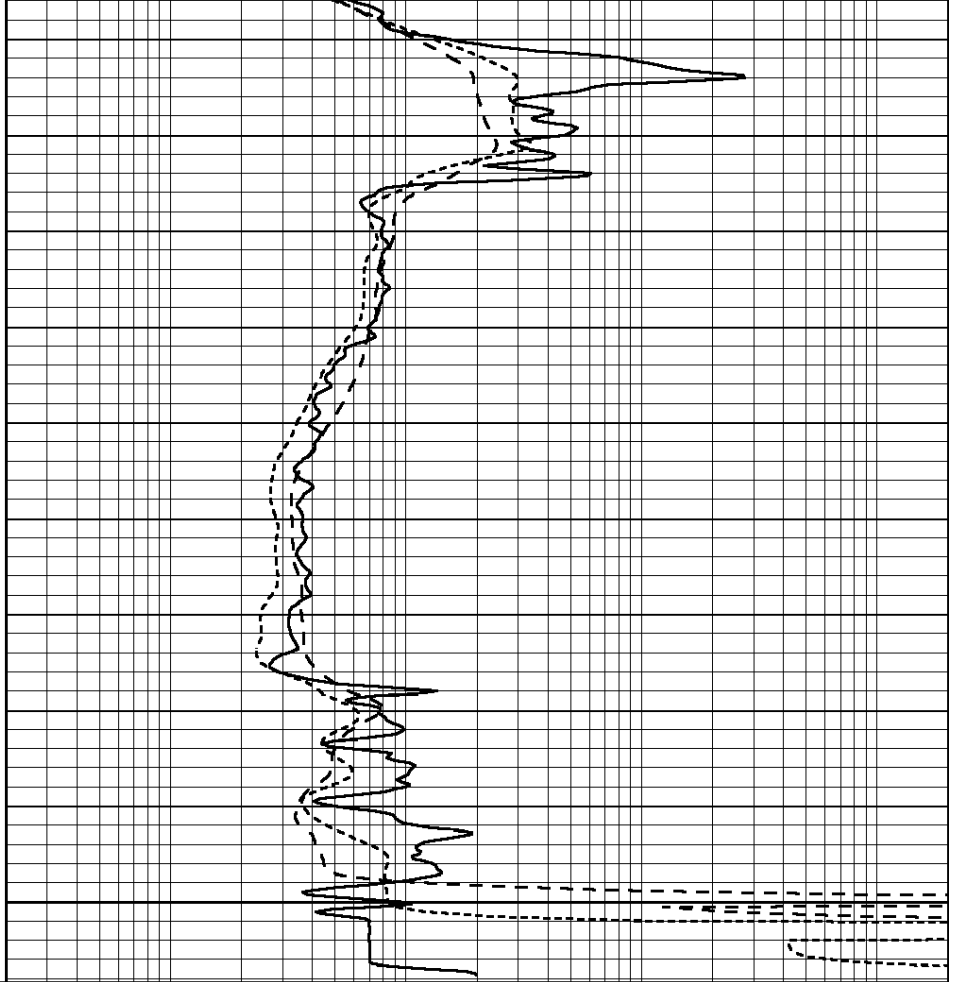




3950

4000

0	GAMMA RAY (GAPI)	150
-100	SP (mV)	100
-250	Rxo/Rt	50
0	MINMK	20



0.2	SHALLOW GUARD (Ohm-m)	2000
0.2	DEEP INDUCTION (Ohm-m)	2000
0.2	MEDIUM INDUCTION (Ohm-m)	2000

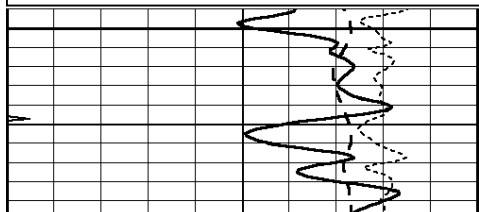


REPEAT SECTION

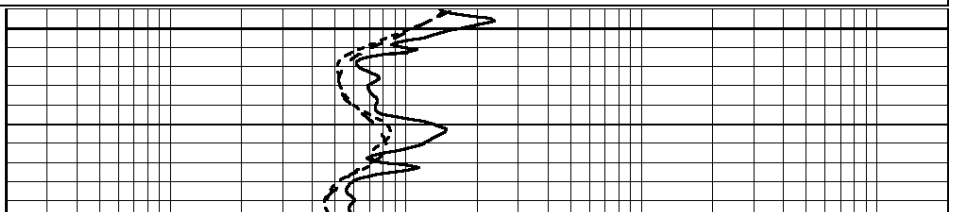
Database File: 011802ddn.db
 Dataset Pathname: pass2.1
 Presentation Format: dil
 Dataset Creation: Sun Nov 03 21:36:17 2013 by Calc SOC 120430
 Charted by: Depth in Feet scaled 1:240

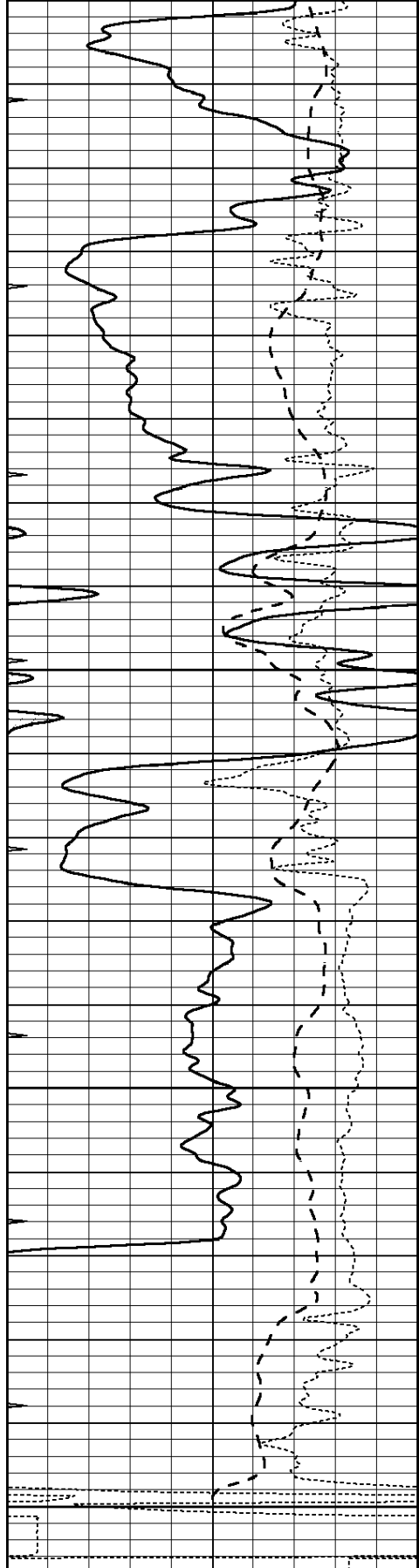
0	GAMMA RAY (GAPI)	150
-100	SP (mV)	100
-250	Rxo/Rt	50
0	MINMK	20

0.2	SHALLOW GUARD (Ohm-m)	2000
0.2	DEEP INDUCTION (Ohm-m)	2000
0.2	MEDIUM INDUCTION (Ohm-m)	2000



3800





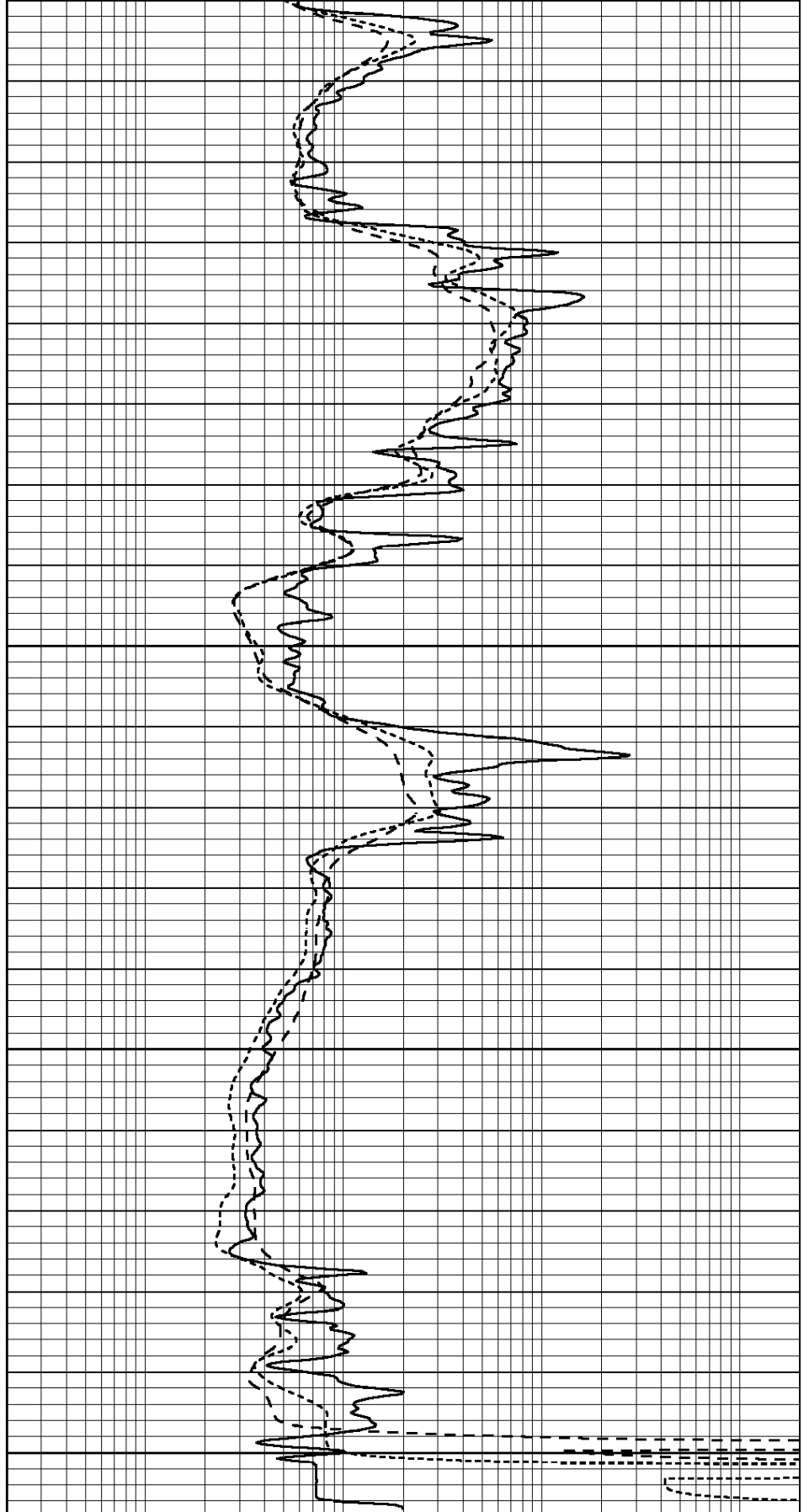
3850

3900

3950

4000

0	GAMMA RAY (GAPI)	150
-100	SP (mV)	100
-250	Rxo/Rt	50
0	MINMK	20



0.2	SHALLOW GUARD (Ohm-m)	2000
0.2	DEEP INDUCTION (Ohm-m)	2000
0.2	MEDIUM INDUCTION (Ohm-m)	2000

Calibration Report

Database File: 011802ddn.db
 Dataset Pathname: pass3.5
 Dataset Creation: Sun Nov 03 22:48:24 2013 by Calc SOC 120430

Dual Induction Calibration Report

Serial-Model: PROBE9-DILG
 Surface Cal Performed: Fri Nov 01 06:04:48 2013
 Downhole Cal Performed: Mon Jul 28 12:02:56 2008
 After Survey Verification Performed: Mon Jul 28 12:02:56 2008

Surface Calibration

Loop:	Readings			References			Results	
	Air	Loop		Air	Loop		m	b
Deep	-0.014	0.629	V	0.000	400.000	mmho/m	650.000	-13.000
Medium	0.039	0.728	V	0.000	464.000	mmho/m	640.000	-14.000
Internal:	Zero	Cal		Zero	Cal		m	b
Deep	0.011	0.610	V	0.000	400.000	mmho/m	667.135	-7.256
Medium	0.005	0.712	V	0.000	464.000	mmho/m	655.677	-3.102

Downhole Calibration

	Readings			References			Results	
	Zero	Cal		Zero	Cal		m'	b'
Deep	0.000	0.000	mmho/m	14.508	388.384	mmho/m	1.000	0.000
Medium	0.000	0.000	mmho/m	166.367	504.400	mmho/m	1.000	0.000
LL3		7.500	V		1400.000	Ohm-m		
		0.000	V		20.000	Ohm-m		
		-7.200	V		4000.000	mmho-m		

After Survey Verification

	Readings			Targets			Results	
	Zero	Cal		Zero	Cal		m'	b'
Deep	0.000	0.000	mmho/m	0.000	0.000	mmho/m	0.000	0.000
Medium	0.000	0.000	mmho/m	0.000	0.000	mmho/m	0.000	0.000
LL3		1.000	Ohm-m		1.000	Ohm-m		
		0.000	Ohm-m		0.000	Ohm-m		
		1.000	mmho-m		1.000	mmho-m		

Litho Density Calibration Report

Serial: 004N Model: PRB

Master Calibration

Performed Mon Jun 03 09:36:56 2013

	Background	Magnesium	Aluminum	Sandstone	
Window 1	1417.6	10391.4	3464.6	11537.5	cps
Window 2	1295.0	8959.7	3050.1	9816.4	cps
Window 3	1105.1	5464.2	2051.0	5838.8	cps
Window 4	315.0	317.7	312.9	319.8	cps
Long Space	0.0	7664.6	1755.0	8521.3	cps
Short Space	1.8	1582.4	1040.8	1699.4	cps
Rho		1.7100	2.5900	1.3800	g/cc
Pe		0.0000	2.5700	1.5500	
Rib Angle	: 44.1	Rib Slope	: 0.970	Density/Spine Ratio	: 0.574
Spine Angle	: 74.1	Spine Slope	: 3.519	Spine Intercept	: -17.0

Before Survey Verification

Performed Wed Dec 31 18:00:00 1969

Window 1	0.0	0.0	0.0	0.0	cps
Window 2	0.0	0.0	0.0	0.0	cps
Window 3	0.0	0.0	0.0	0.0	cps
Window 4	0.0	0.0	0.0	0.0	cps
Long Space	0.0	0.0	0.0	0.0	cps
Short Space	0.0	0.0	0.0	0.0	cps
Measured Rho		0.0000	0.0000	0.0000	g/cc
Measured Correction		0.0000	0.0000	0.0000	g/cc
Measured Pe			0.0000	0.0000	

After Survey Verification

Performed Wed Dec 31 18:00:00 1969

Window 1	0.0	0.0	0.0	0.0	cps
Window 2	0.0	0.0	0.0	0.0	cps
Window 3	0.0	0.0	0.0	0.0	cps
Window 4	0.0	0.0	0.0	0.0	cps
Long Space	0.0	0.0	0.0	0.0	cps
Short Space	0.0	0.0	0.0	0.0	cps
Measured Rho		0.0000	0.0000	0.0000	g/cc
Measured Correction		0.0000	0.0000	0.0000	g/cc
Measured Pe			0.0000	0.0000	

Compensated Neutron Calibration Report

Serial Number: 070808
Tool Model: Probe

PRE-SURVEY VERIFICATION

Detector	Readings	Measured	Target
Short Space	cps		
Long Space	cps	pu	pu

POST-SURVEY VERIFICATION

Detector	Readings	Measured	Target
Short Space	cps		
Long Space	cps	pu	pu

Gamma Ray Calibration Report

Serial Number: 070559
Tool Model: OPEN_GR
Performed: Sun Nov 03 21:08:13 2013

Calibrator Value: 1.0 GAPI
Background Reading: 0.0 cps
Calibrator Reading: 1.0 cps
Sensitivity: 0.3000 GAPI/cps