



**COMPLETION
& PRODUCTION
SERVICES CO.**

**SONIC
LOG**

Company DOWNING - NELSON OIL COMPANY, INC.
Well DeWALD #1-13
Field WILDCAT
County RUSH
State KANSAS

Company DOWNING - NELSON OIL COMPANY, INC.
Well DeWALD #1-13
Field WILDCAT
County RUSH State KANSAS

Location: API # : 15-165-22043-0000
1142' FNL & 1611' FEL
SE - SE - NW - NE
SEC 13 TWP 17S RGE 19W
Permanent Datum GROUND LEVEL Elevation 2154
Log Measured From KELLY BUSHING 8' A.G.L.
Drilling Measured From KELLY BUSHING
Other Services
CDL/CNL
DIL/SONIC
Elevation
K.B. 2162
D.F. 2160
G.L. 2154

Date	11/3/13
Run Number	TWO
Depth Driller	4000
Depth Logger	4003
Bottom Logged Interval	3991
Top Log Interval	1300
Casing Driller	8 5/8" @ 1364'
Casing Logger	1364
Bit Size	7 7/8"
Type Fluid in Hole	CHEMICAL MUD
Density / Viscosity	9.2/56
pH / Fluid Loss	9.5/10.4
Source of Sample	FLOWLINE
Rim @ Meas. Temp	.800 @ 70F
Rmf @ Meas. Temp	.600 @ 70F
Rmc @ Meas. Temp	.960 @ 70F
Source of Rmf / Rmc	MEASUREMENT
Rim @ BHT	.483 @ 116F
Time Circulation Stopped	2.5 HOURS
Time Logger on Bottom	9:30 P.M.
Maximum Recorded Temperature	116F
Equipment Number	4854
Location	HAYS, KANSAS
Recorded By	JEFF LUEBBERS
Witnessed By	AL DOWNING
	MARC DOWNING
	RON NELSON

<<< Fold Here >>>

All interpretations are opinions based on inferences from electrical or other measurements and we cannot and do not guarantee the accuracy or correctness of any interpretation, and we shall not, except in the case of gross or willful negligence on our part, be liable or responsible for any loss, costs, damages, or expenses incurred or sustained by anyone resulting from any interpretation made by any of our officers, agents or employees. These interpretations are also subject to our general terms and conditions set out in our current Price Schedule.

Comments

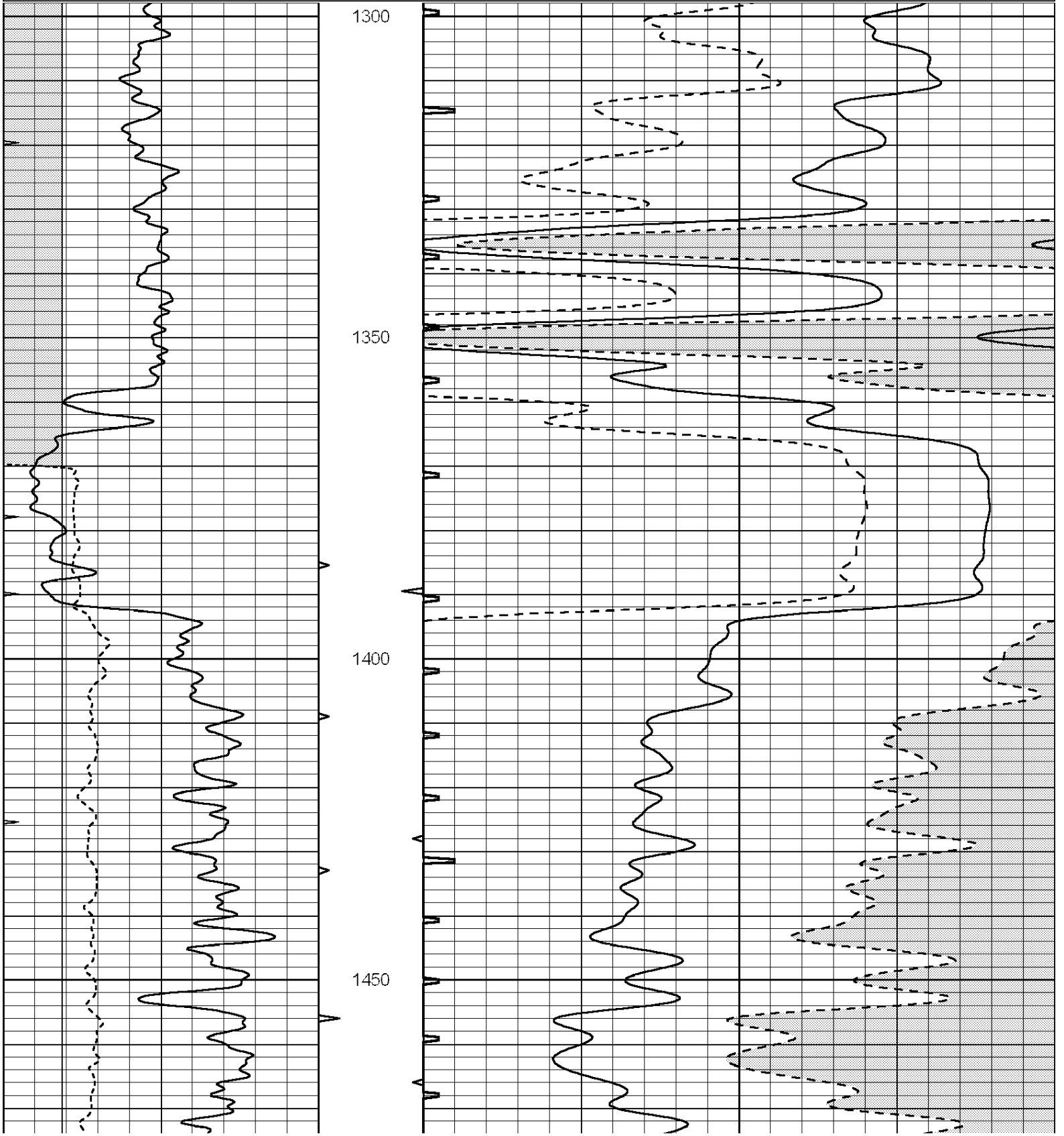
THANK YOU FOR USING "NABORS" HAYS, KANSAS (785) 628-6395
DIRECTIONS
LIEBENTHAL, KS., S. TO BLKTOP, 3W. TO "RD. 220", 4 1/2S., W. INTO JUST PAST FARM DRIVE.
FOLLOW TRAIL N. & W.

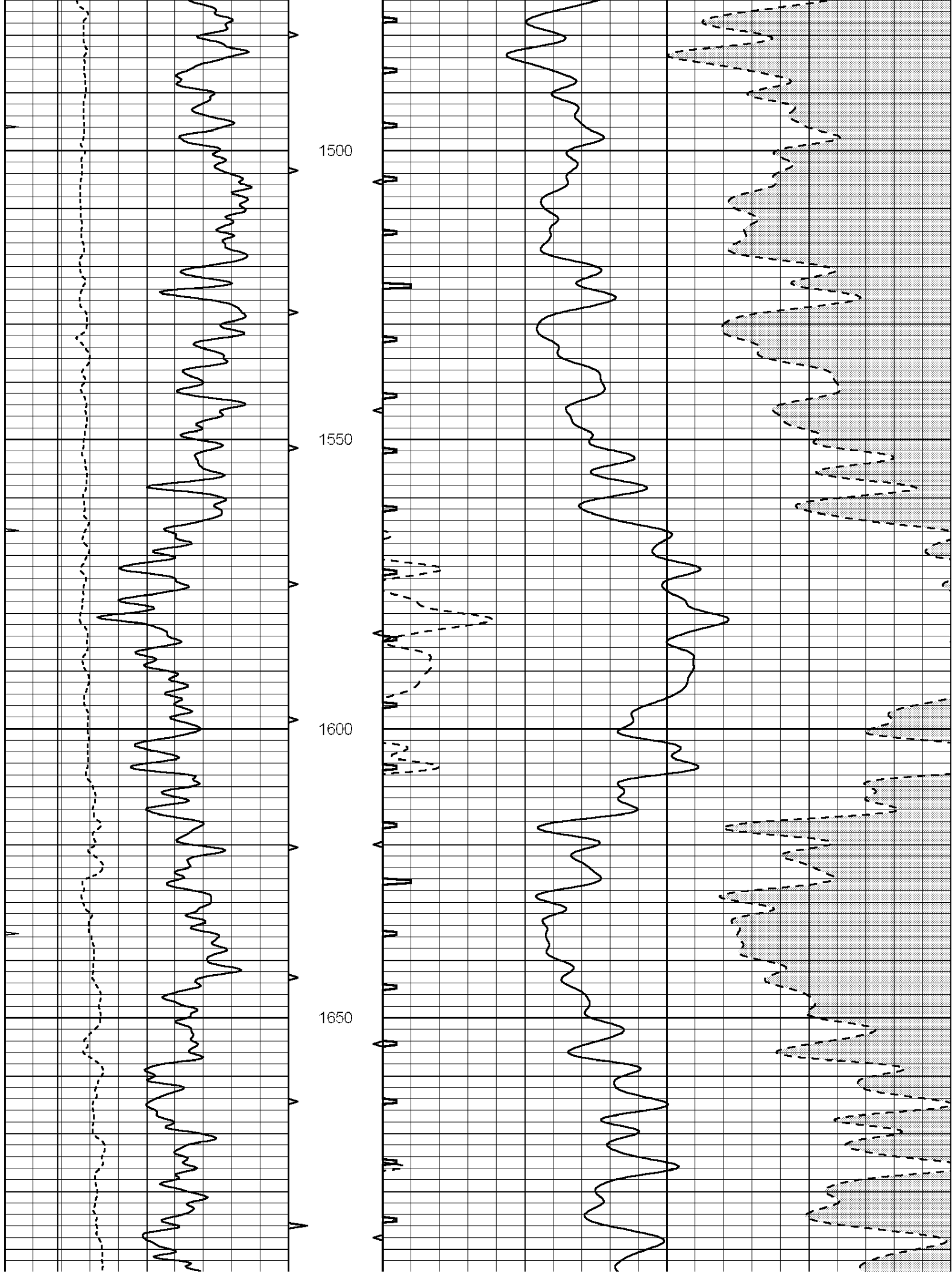


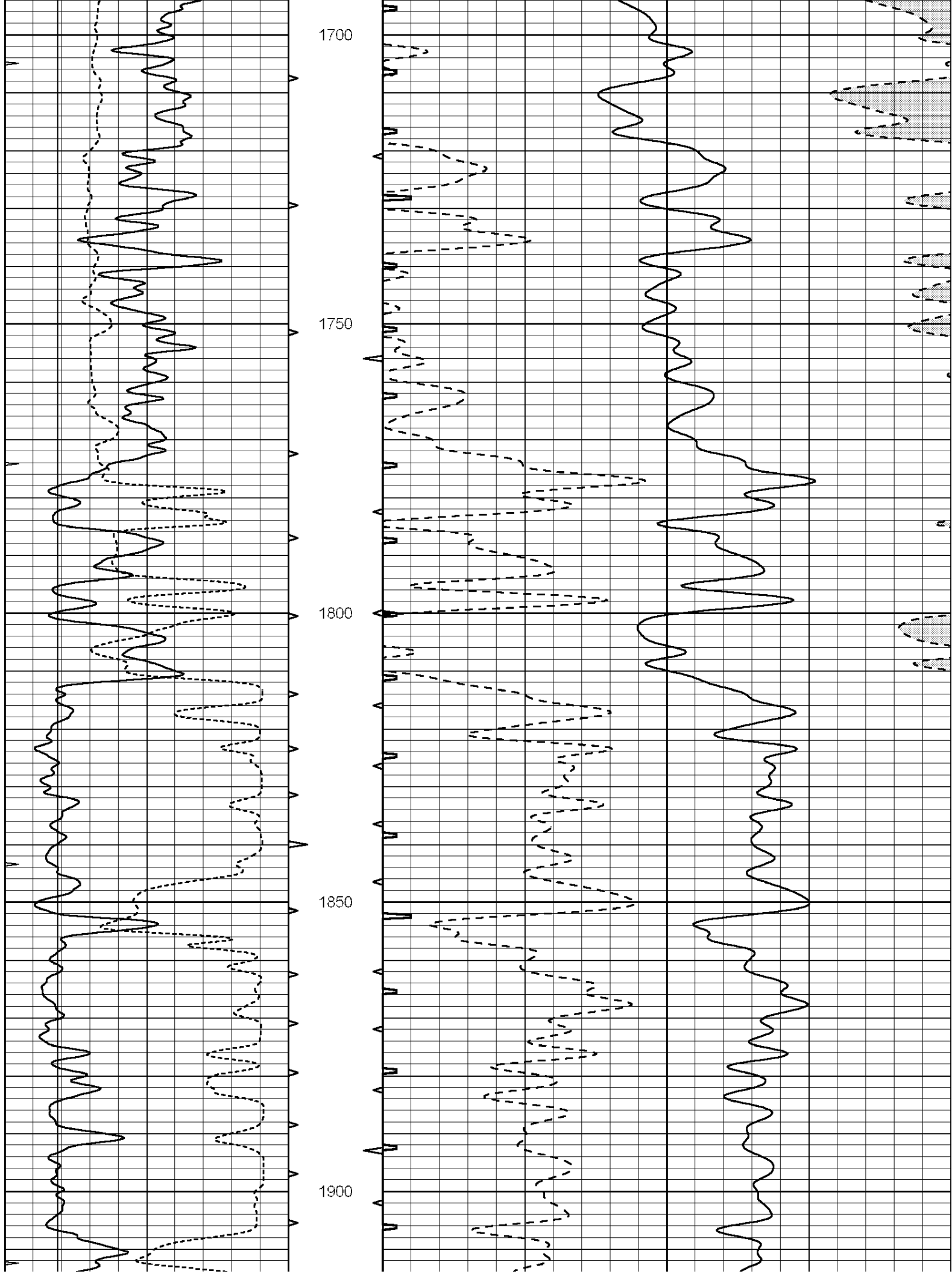
MAIN SECTION

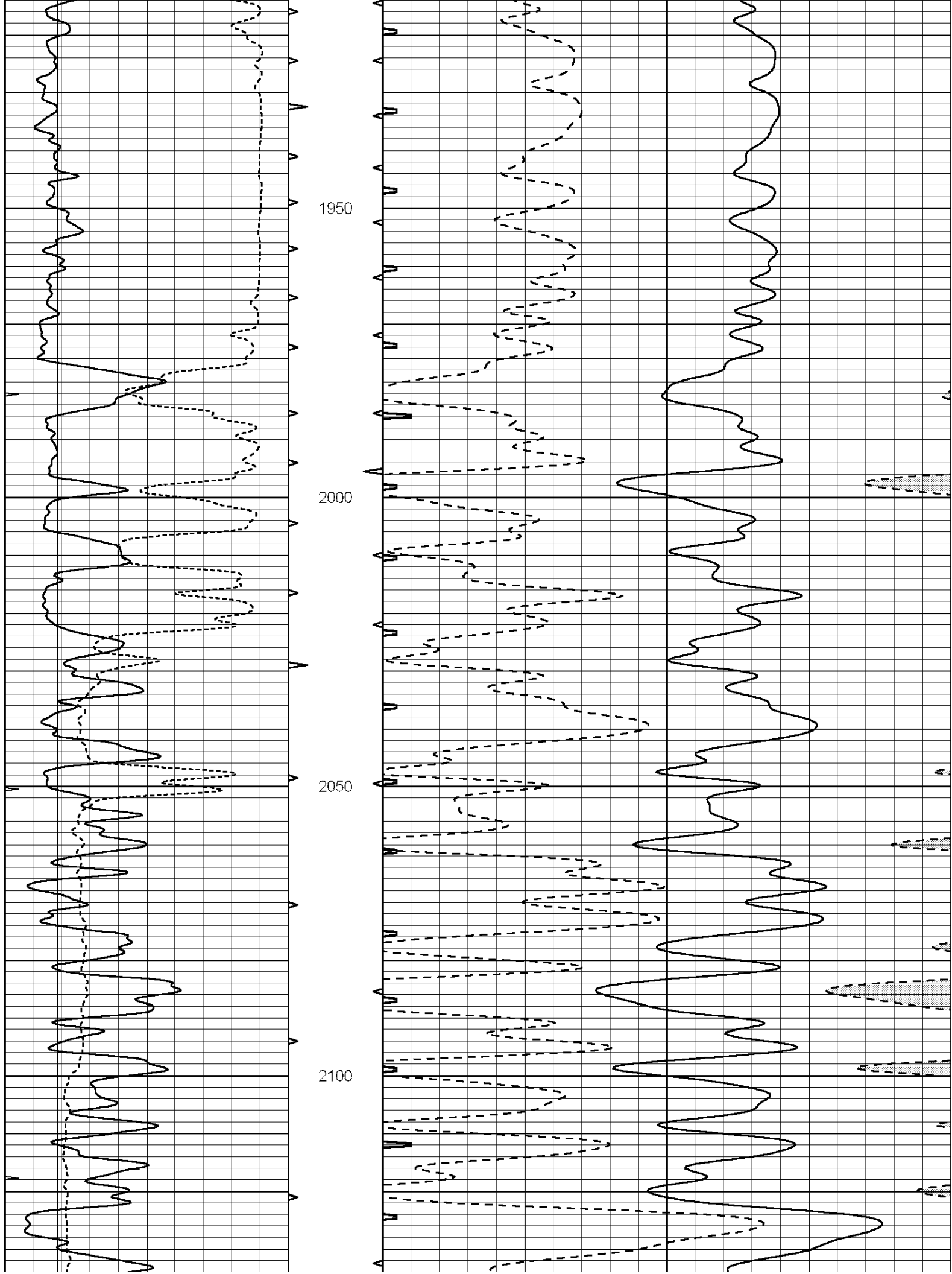
Database File: 011802ddn.db
 Dataset Pathname: pass6.5
 Presentation Format: slt
 Dataset Creation: Mon Nov 04 00:47:22 2013
 Charted by: Depth in Feet scaled 1:240

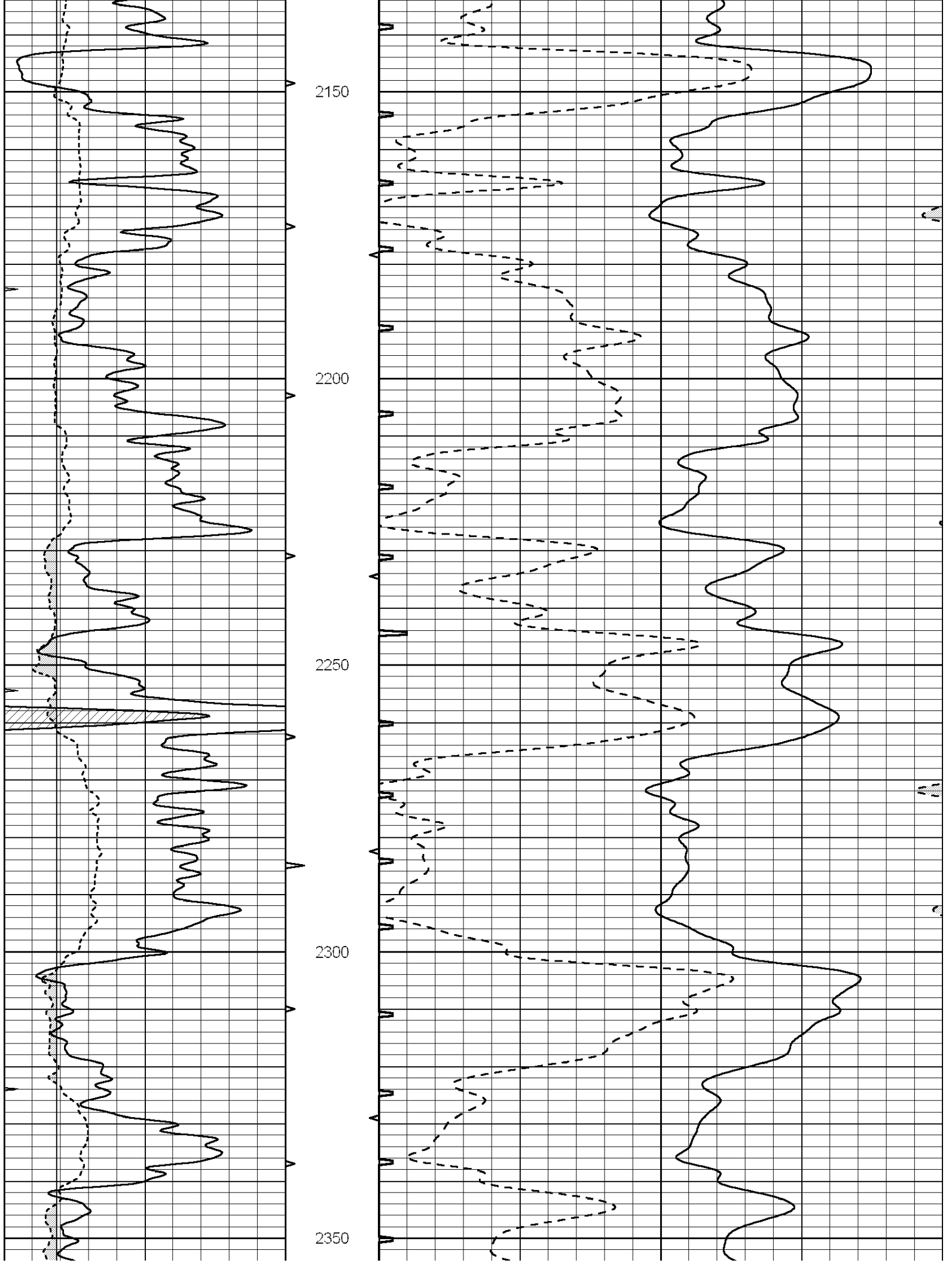
0	GAMMA RAY (GAPI)	150	ABHV	140	DELTA TIME (usec/ft)	40
6	CALIPER (in)	16	10 (ft3)	0	30	SONIC POROSITY (pu)
0	MINMK	20	TBHV	0	ITT (msec)	20
			0 (ft3)	10		

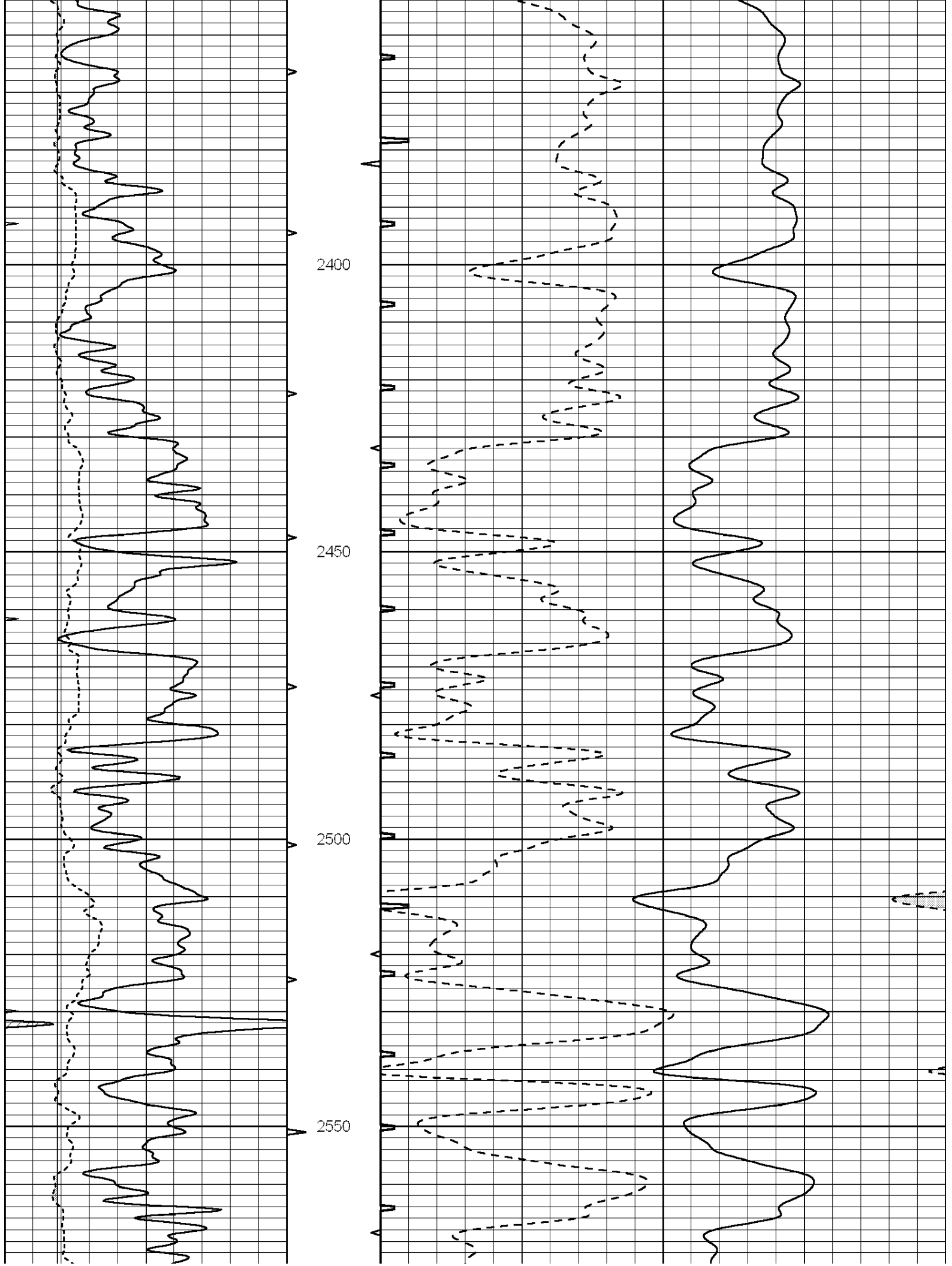


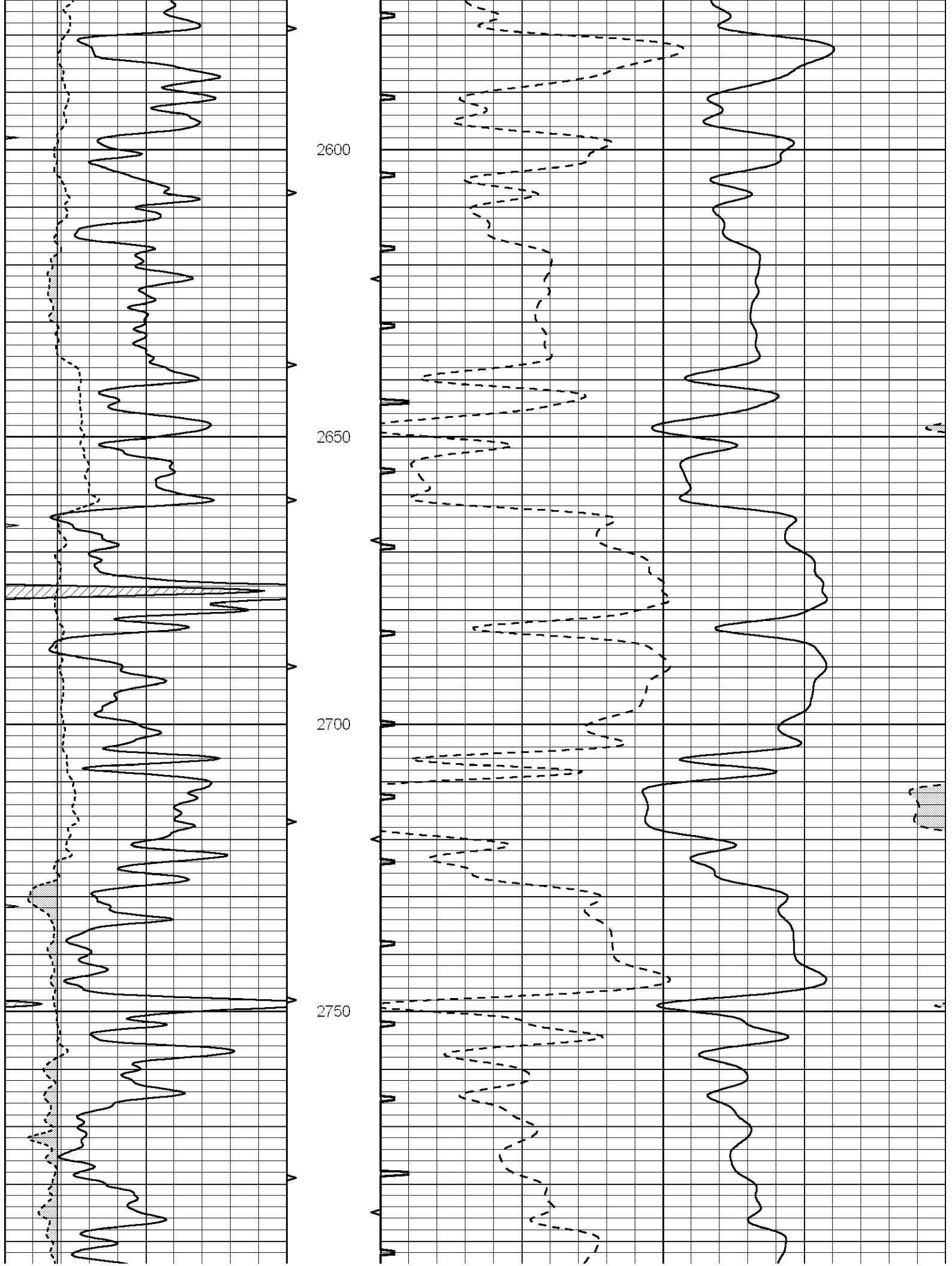


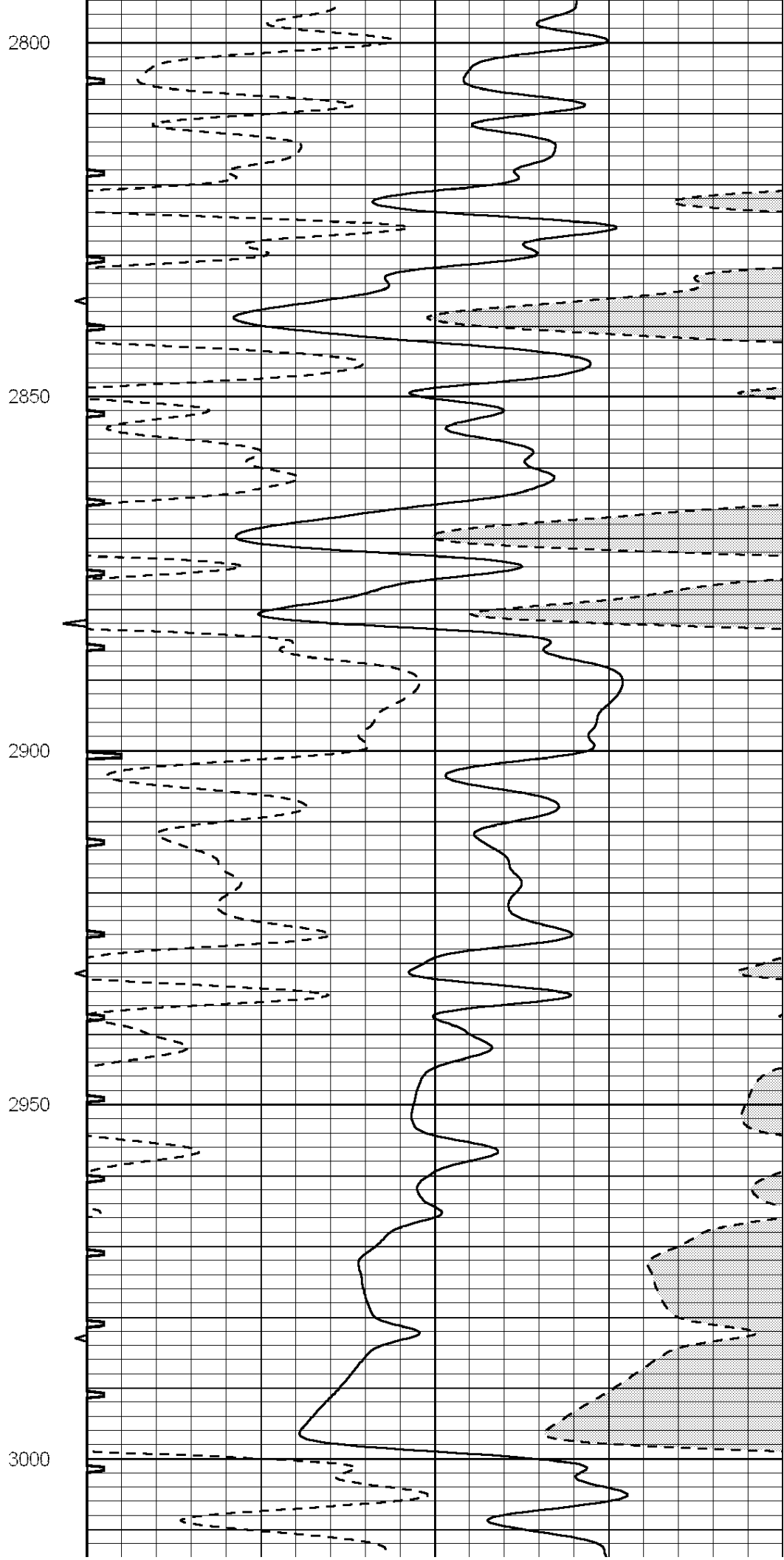
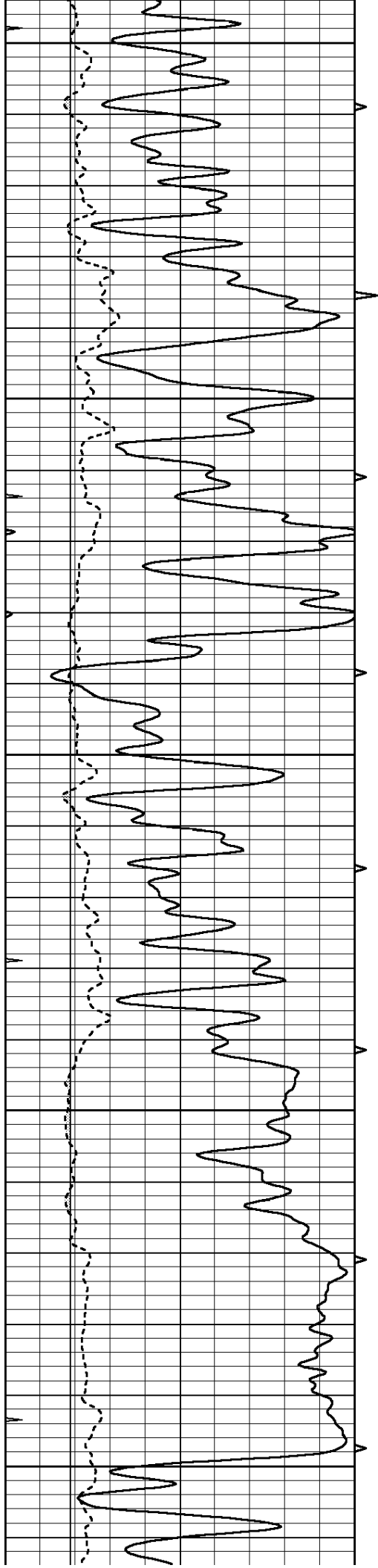


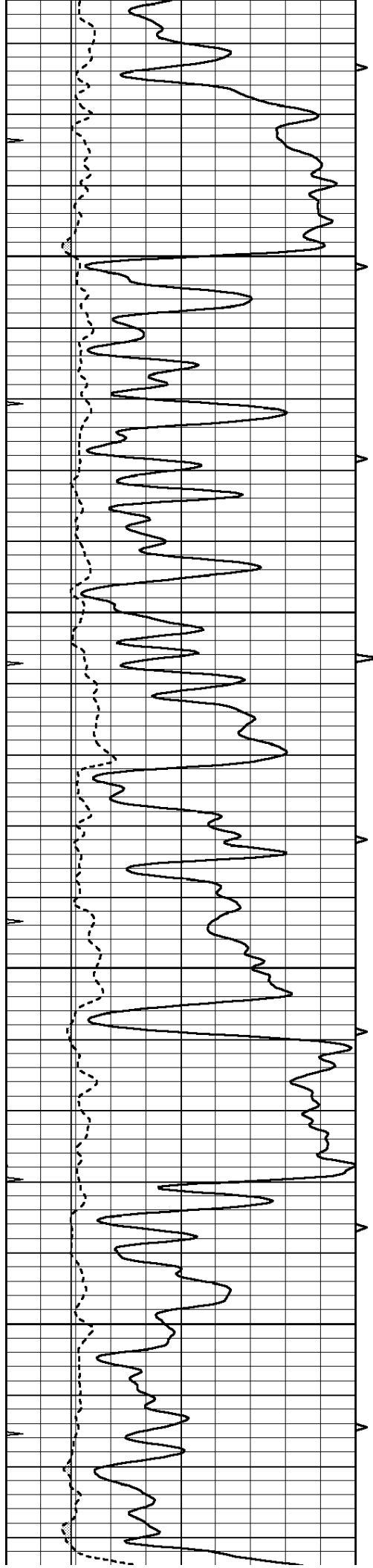










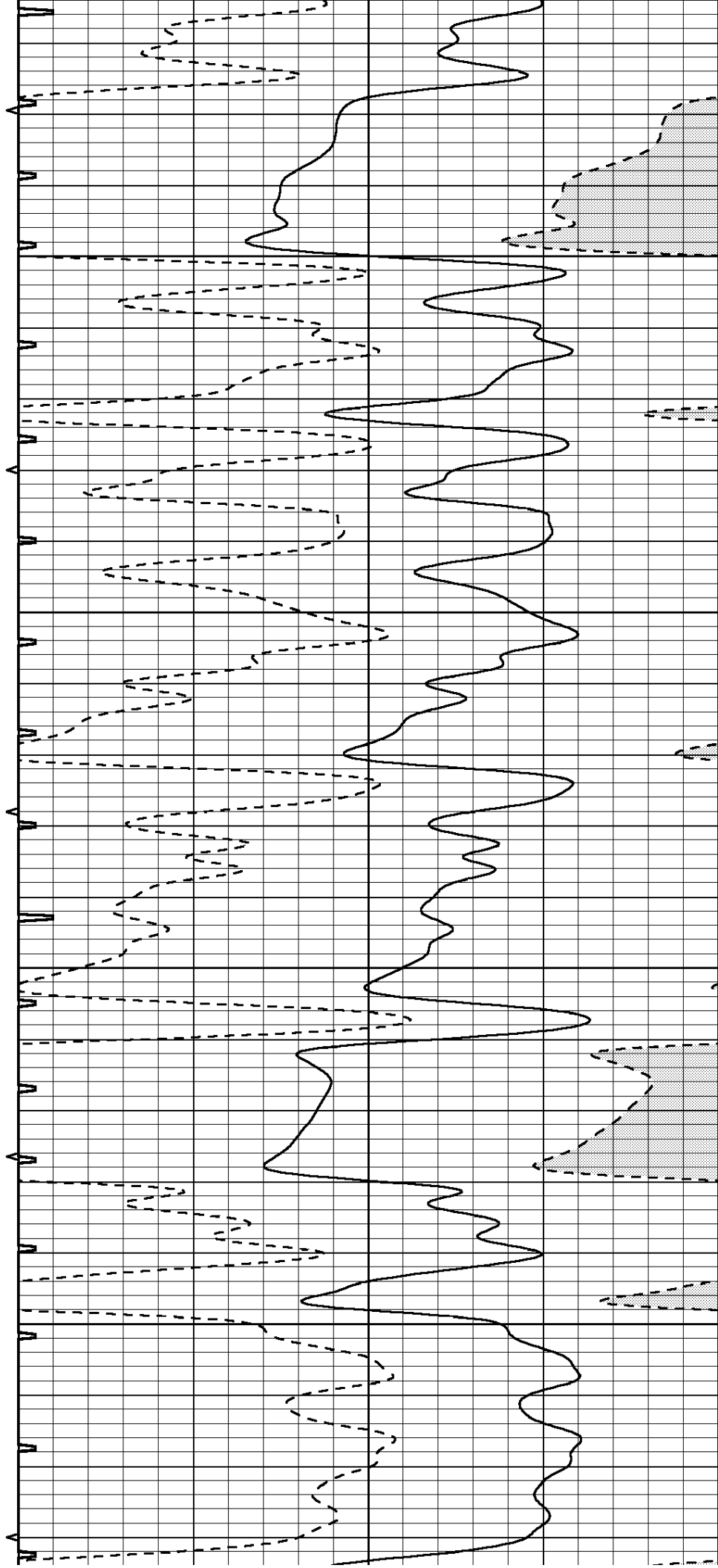


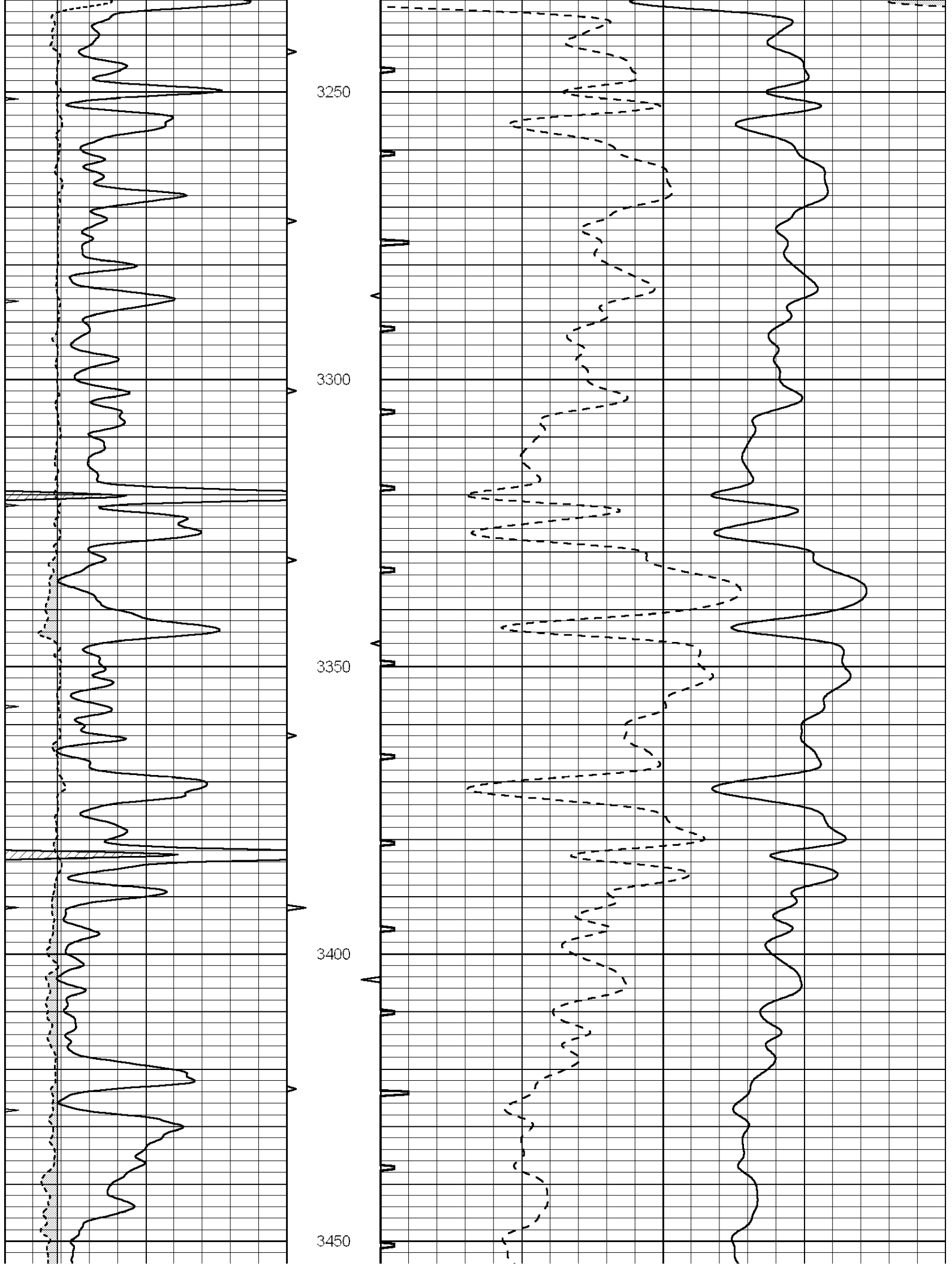
3050

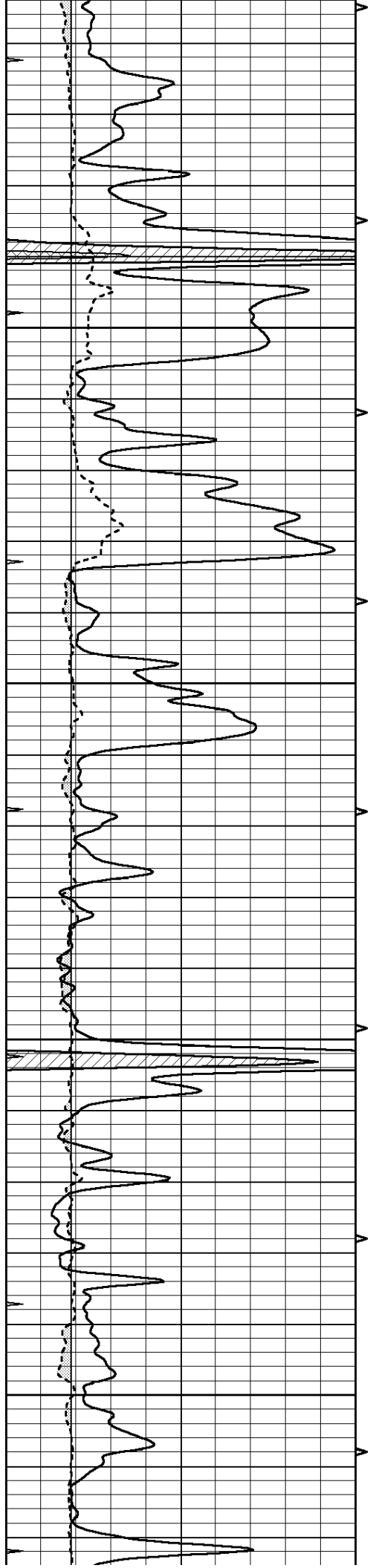
3100

3150

3200





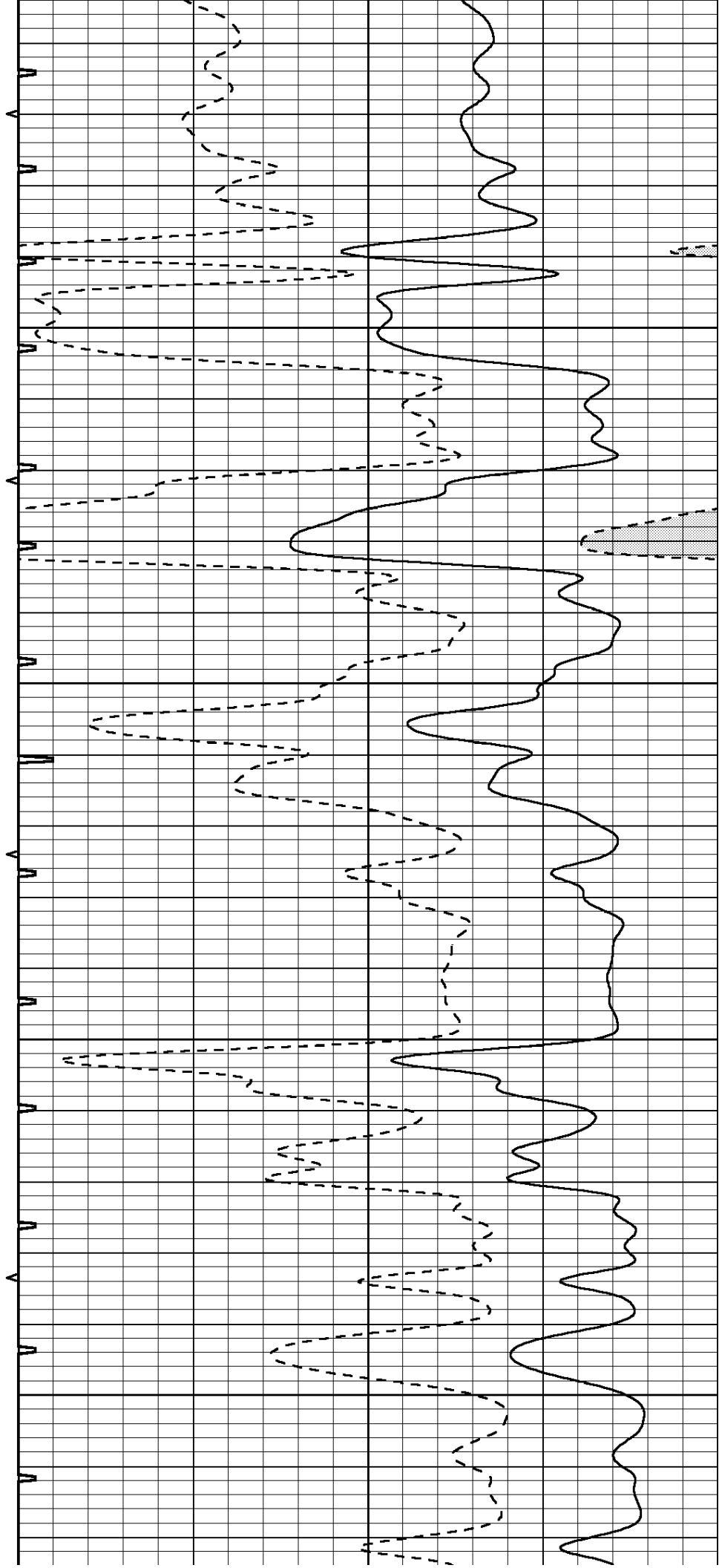


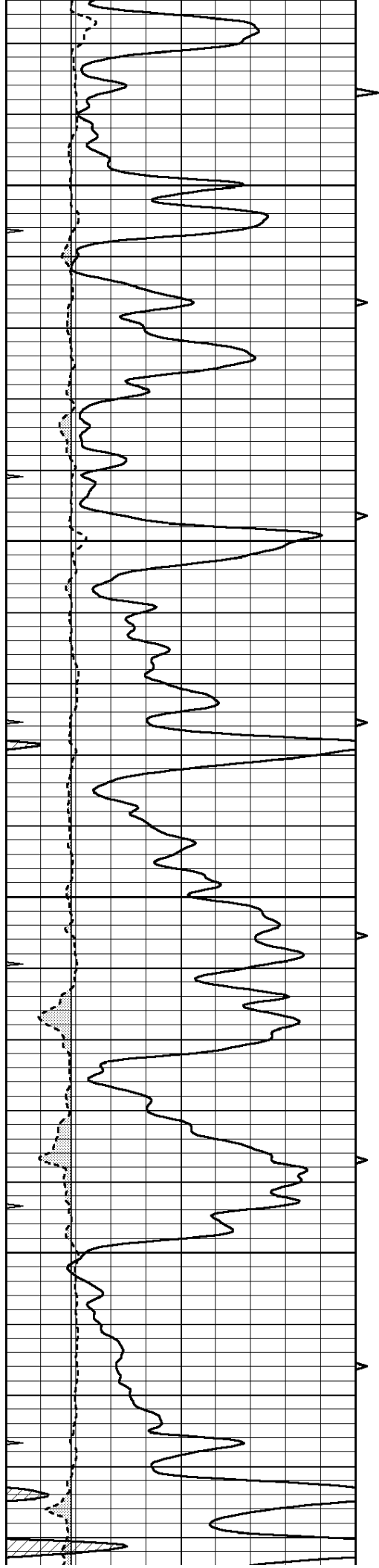
3500

3550

3600

3650



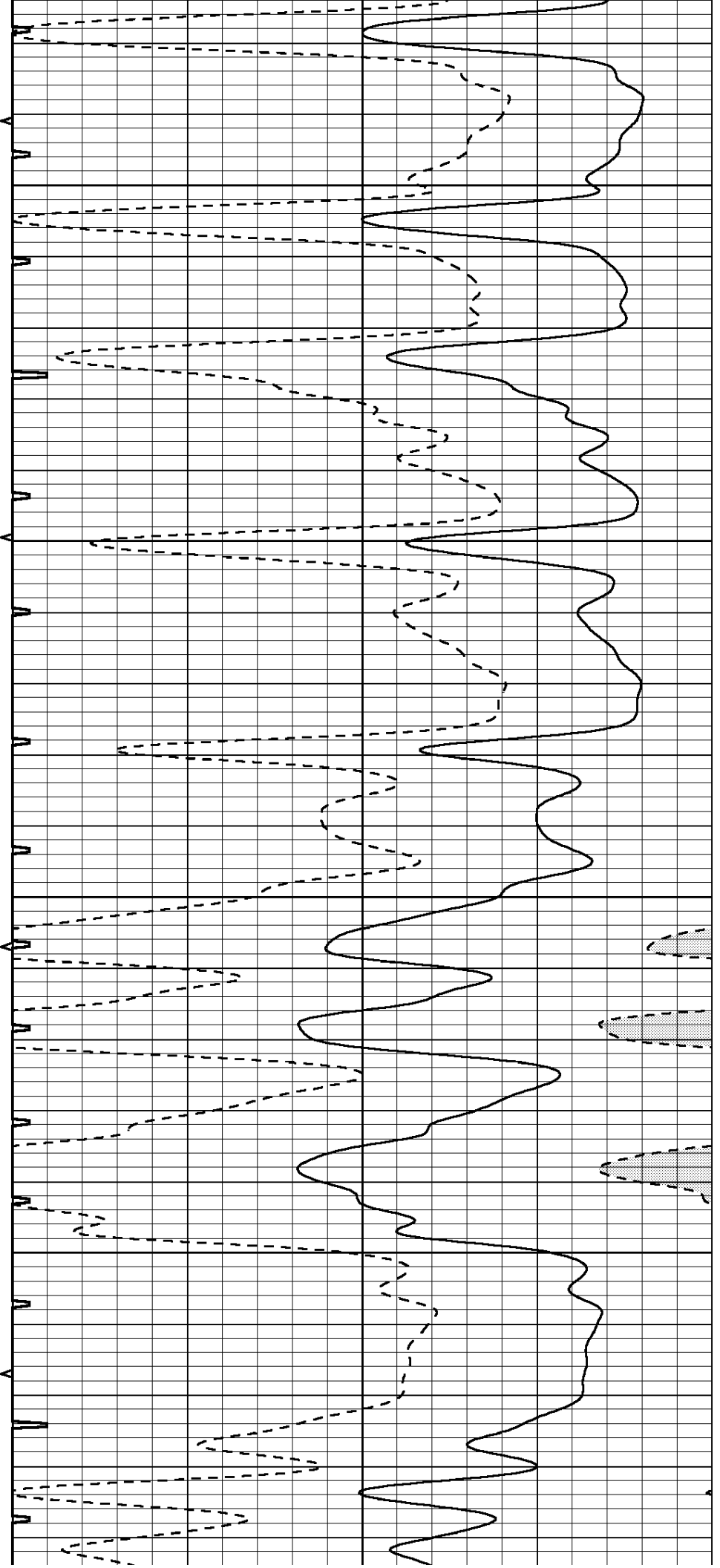


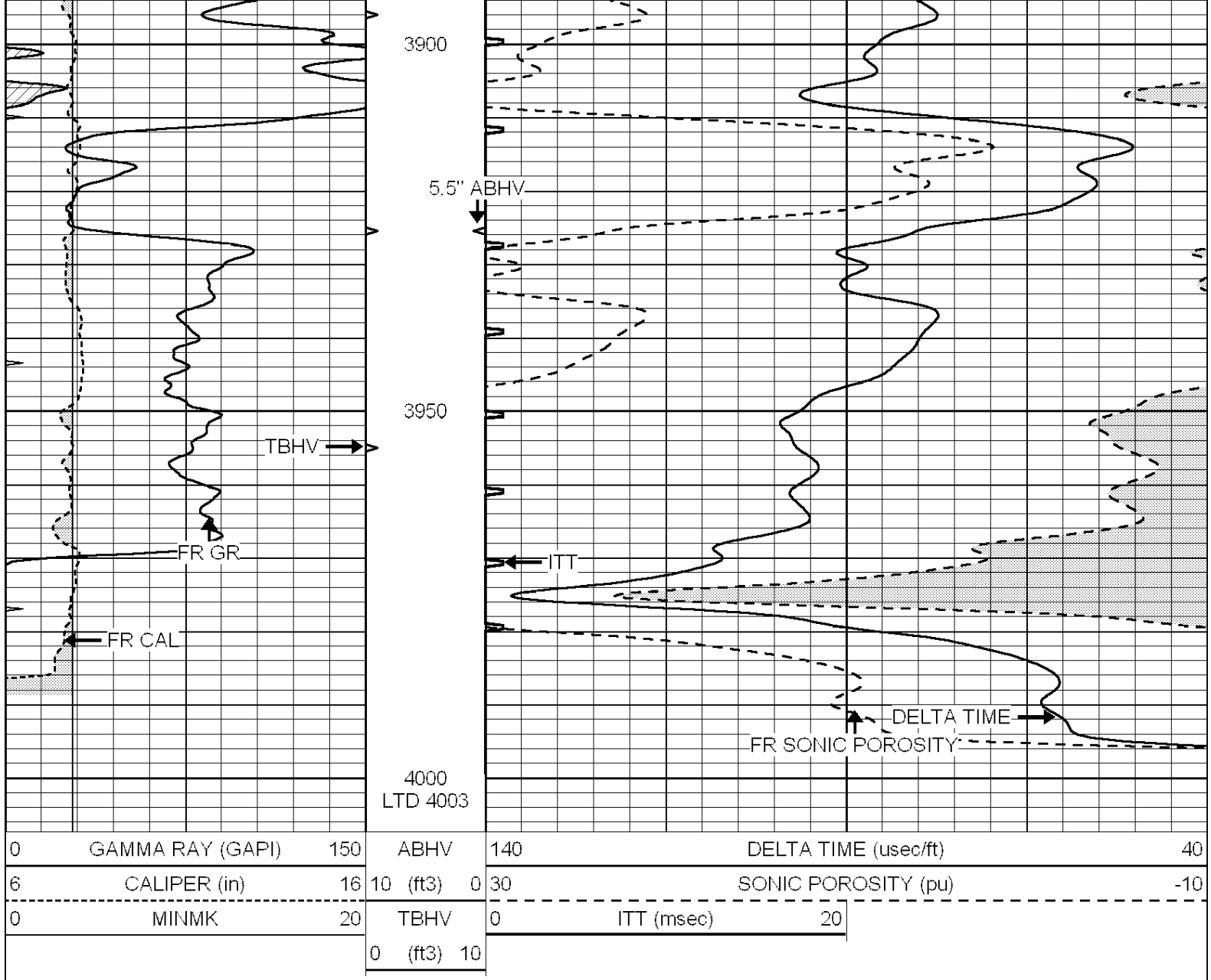
3700

3750

3800

3850

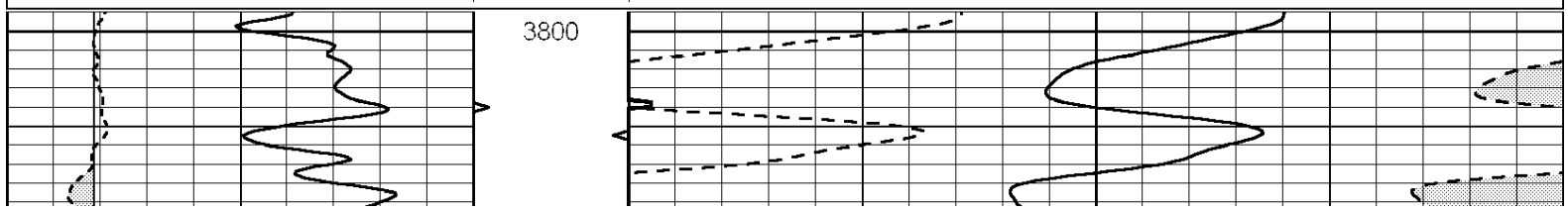
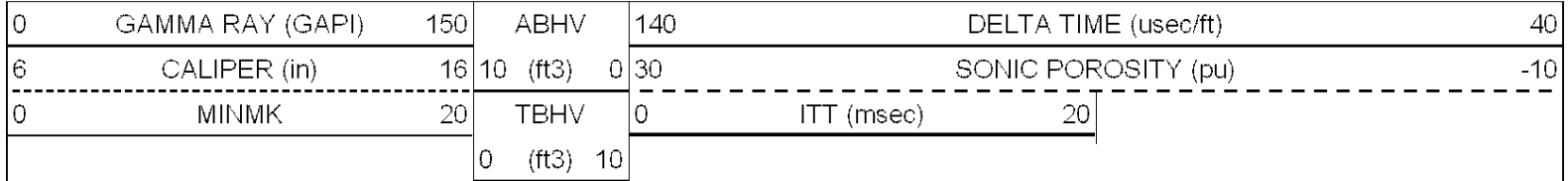


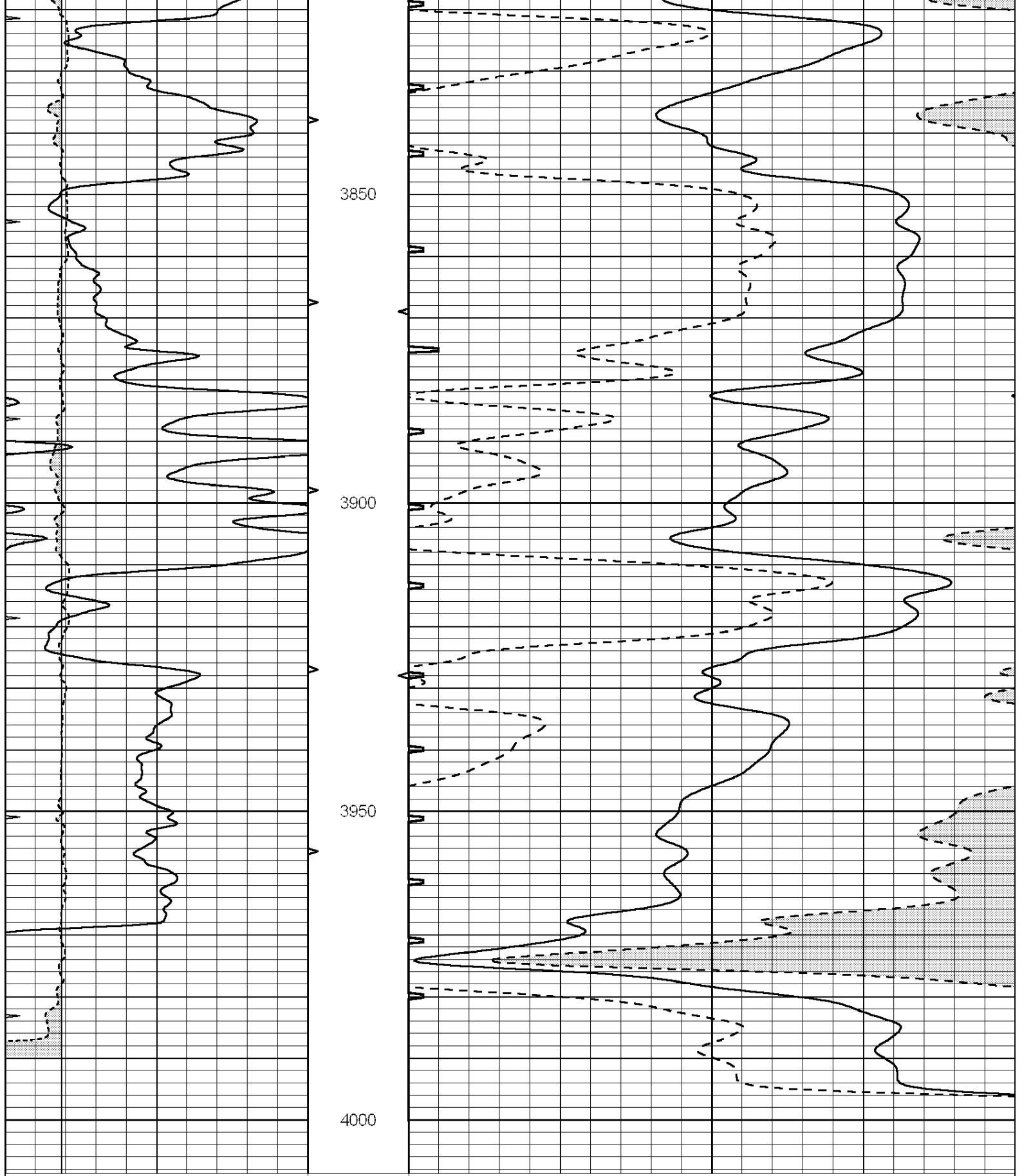


**COMPLETION
& PRODUCTION
SERVICES CO.**

REPEAT SECTION

Database File: 011802ddn.db
 Dataset Pathname: pass5.2
 Presentation Format: slt
 Dataset Creation: Sun Nov 03 23:46:13 2013
 Charted by: Depth in Feet scaled 1:240





0	GAMMA RAY (GAPI)	150	ABHV	140	DELTA TIME (usec/ft)	40	
6	CALIPER (in)	16	10 (ft3)	0	30	SONIC POROSITY (pu)	-10
0	MINMK	20	TBHV	0	ITT (msec)	20	
			0 (ft3)	10			