



MIDWEST SURVEYS
 LOGGING - PERFORATING - CONSULTING SERVICES
 P.O. Box 88, Osawatomie, KS 66064
 913.755.2128

GAMMA RAY / NEUTRON / CCL

File No.

Company: **Birk Petroleum**
 Well: **Fischer No.-15**
 Field: **Crandall North**
 County: **Coffey** State: **Kansas**

Location: **825' FSL & 1155' FEL**
 Sec: **36** Twp: **22S** Rge: **15E**
 Permeant Datum: **GL** Elevation: **NA**
 Log Measured From: **GL** KB NA
 Drilling Measured From: **GL** GF NA
 GL NA

Date: **07-16-2014**
 Run Number: **One**
 Depth Driller: **1122.0**
 Depth Logger: **1144.5**
 Bottom Logged Interval: **1113.5**
 Top Log Interval: **20.0**
 Fluid Level: **Full**

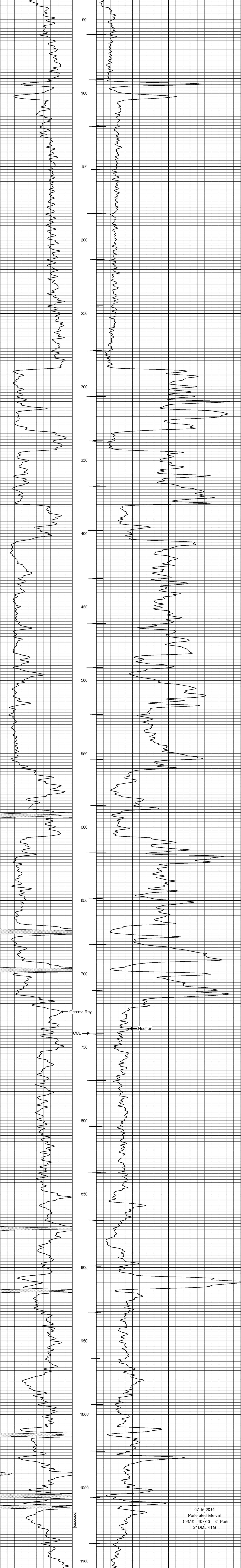
Type Fluid		Density / Viscosity		Salinity - PPM Cl		MAX Recorded Temp		Estimated Cement Top		Location	
Water		NA		NA		NA		0.0		102 Casawomie	
Recorded By:		Gary Winstead		Brial Birk							
BONE-HOLE RECORD		TO		SIZE		WGT		FROM		TO	
RON	BIT	NO	FROM	NO	FROM	NO	FROM	NO	FROM	NO	FROM
One	9.875"	0.0	4.00	7.00"	17.0#	0.0	4.00	9.875"	4.00	1122.0	1177.0
Two	6.25"	4.00	1122.0	2.875"	6.5#	0.0					

<<< Fold Here >>>
 All interpretations are opinions based on inferences from electrical or other measurements and we cannot and do not guarantee the accuracy or correctness of any interpretation, and we shall not, except in the case of gross or willful negligence on our part, be liable or responsible for any loss, costs, damages, or expenses incurred or sustained by anyone resulting from any interpretation made by any of our officers, agents or employees. These interpretations are also subject to our general terms and conditions set out in our current Price Schedule.

Comments

Drilling Contractor :
 Woco Drilling, LLC.

Database File: fischer15.db
 Dataset Pathname: pass1
 Presentation Format: gr-n-ccl
 Dataset Creation: Wed Jul 16 11:12:50 2014 by Log SCH 111116
 Charted by: Depth in Feet scaled 1.240



07-16-2014
 Perforated Interval
 1067.0 - 1077.0 31 Perfs
 2" DML RTG