



Pioneer Energy Services

# Gamma Ray / Neutron Log

15-147-20734-00-00

Company **Darrah Oil Company, Inc.**  
 Well **Ray B No. 5**  
 Field **Ray**  
 County **Phillips** State **Kansas**

Location

990' FNL & 990' FWL

Other Services  
GRCBL

Sec: 32 Twp: 5S Rge: 20W

Permanent Datum Ground Level Elevation 2194  
 Log Measured From Kelly Bushing 5 Ft. Above Perm. Datum  
 Drilling Measured From Kelly Bushing

Elevation  
K.B. 2199  
D.F. 2199  
G.L. 2194

Date 4/6/2014

Run Number One

Type Log GRN

Depth Driller 3588

Depth Logger 3593

Bottom Logged Interval 3594

Top Logged Interval 2800

Type Fluid In Hole Water

Salinity, PPM CL

Density

Level 1610

Max. Rec. Temp. F 114

Operating Rig Time One Hour

Equipment -- Location 72 Hays

Recorded By K. Ladriagan

Witnessed By Philip Martin

Run No. Bit From To Size Wgt. From To

5.5 15.5# 0 T.D.

Borehole Record Casing Record

<<< Fold Here >>>

All interpretations are opinions based on inferences from electrical or other measurements and we cannot and do not guarantee the accuracy or correctness of any interpretation, and we shall not, except in the case of gross or willful negligence on our part, be liable or responsible for any loss, costs, damages, or expenses incurred or sustained by anyone resulting from any interpretation made by any of our officers, agents or employees. These interpretations are also subject to our general terms and conditions set out in our current Price Schedule.

### Comments

Thank you for using Pioneer Energy Services, Inc. 785.625.3858

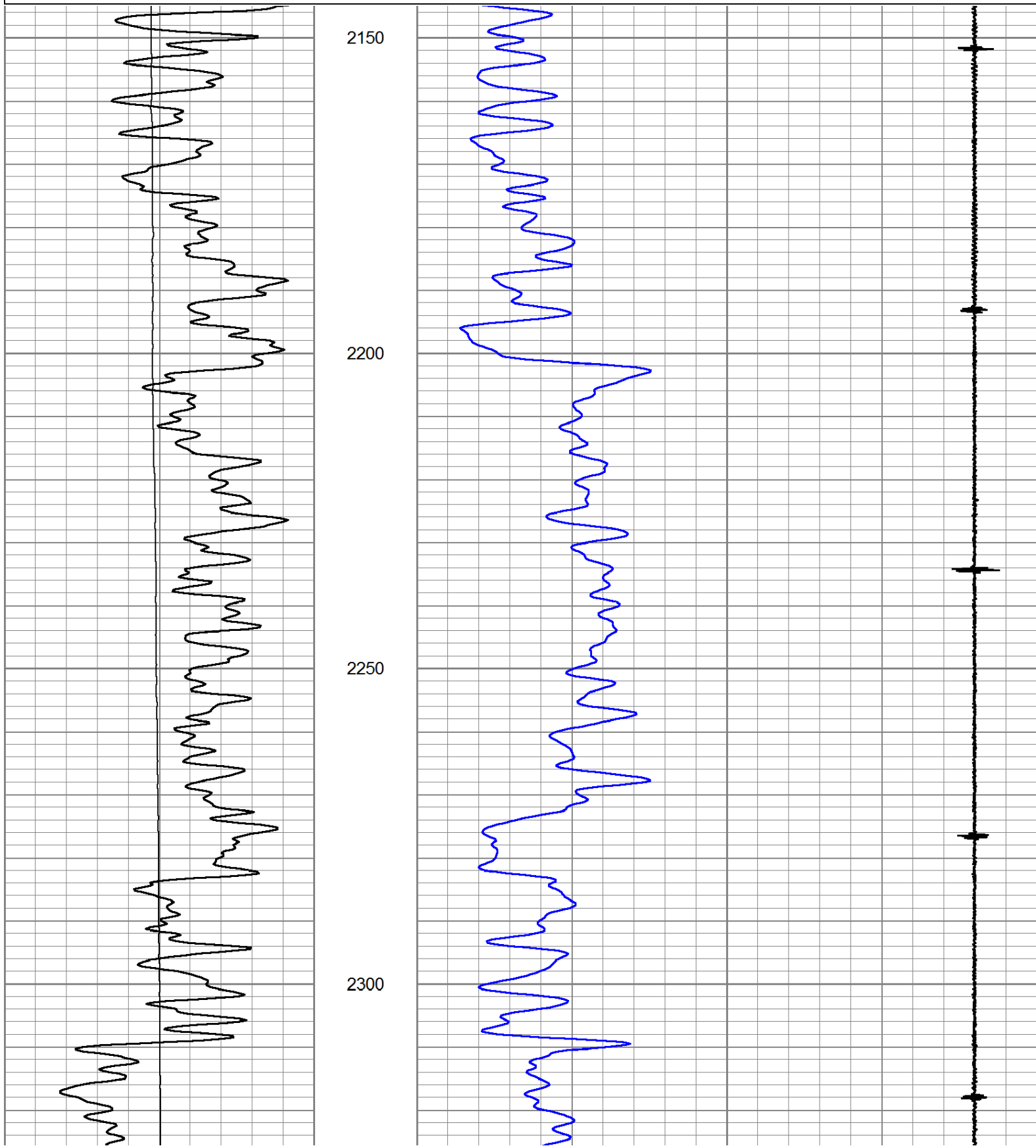
Logan, KS., South to DayDream Road (1 South of Radio Tower on Blacktop)  
2.25 West, South and West Into.

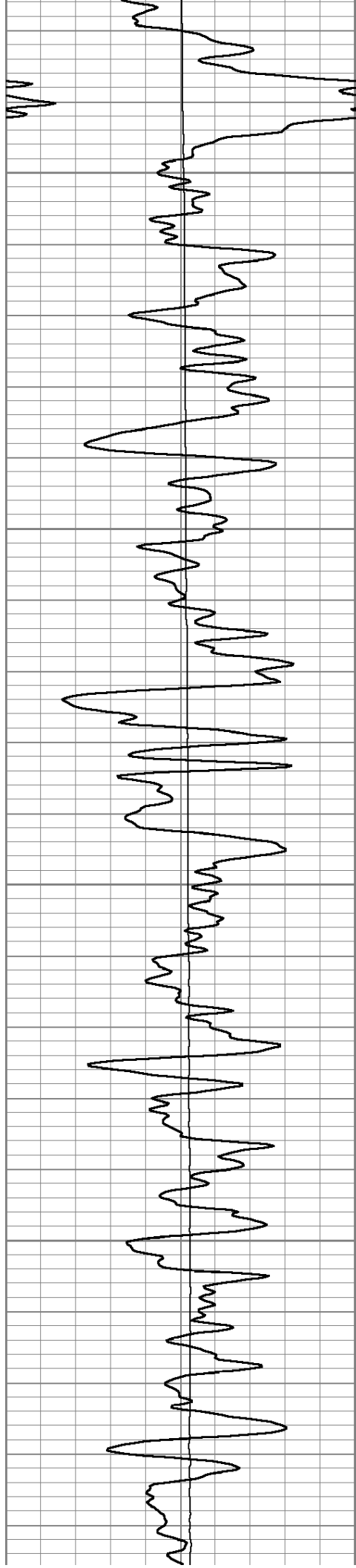


# Main Pass

Database File: grcblneu.db  
Dataset Pathname: grcblneu/pass13  
Presentation Format: gr-n-ccl  
Dataset Creation: Sun Apr 06 18:56:18 2014  
Charted by: Depth in Feet scaled 1:240

0	GR (GAPI)	150	35	NEU (NAPI)	240
0	LTEN (lb)	1500	4	CCL	-1



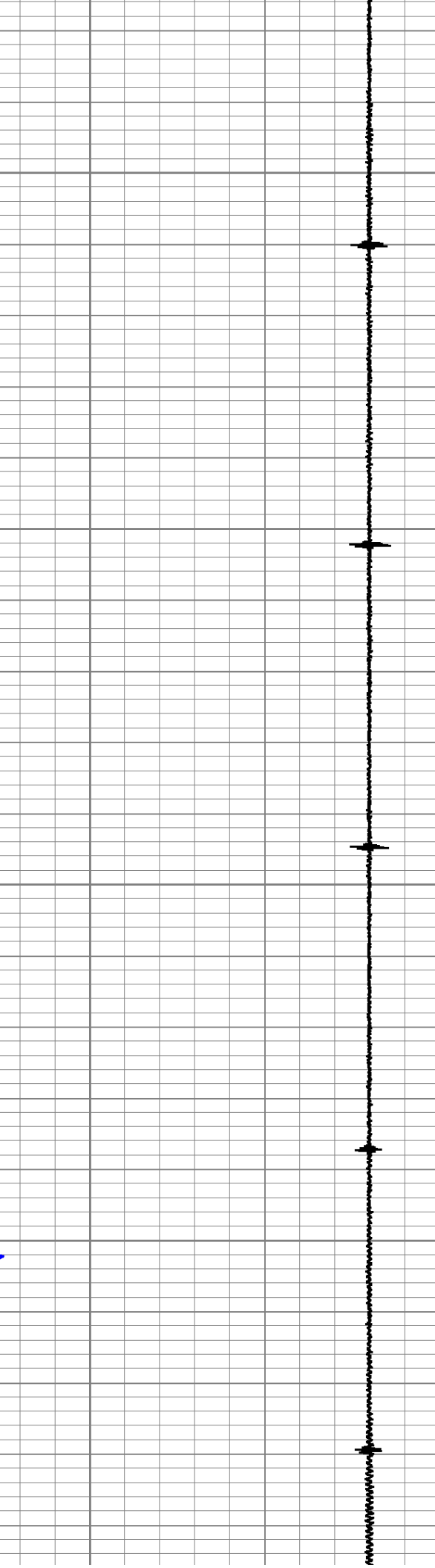
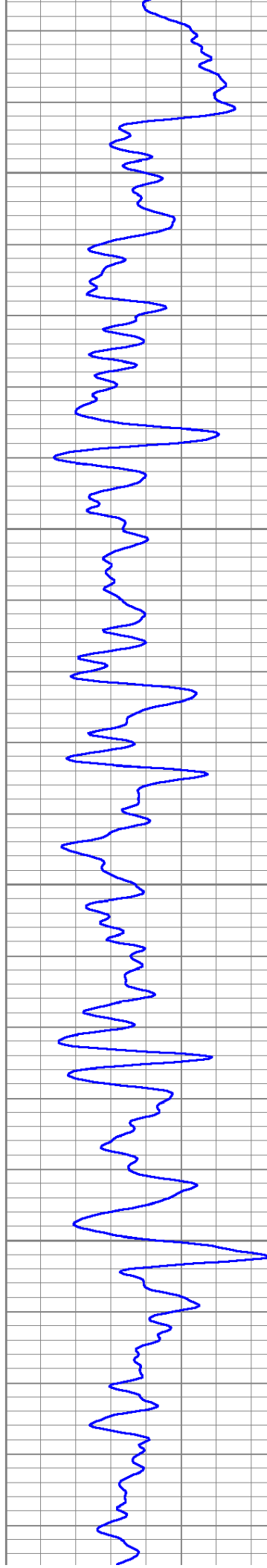


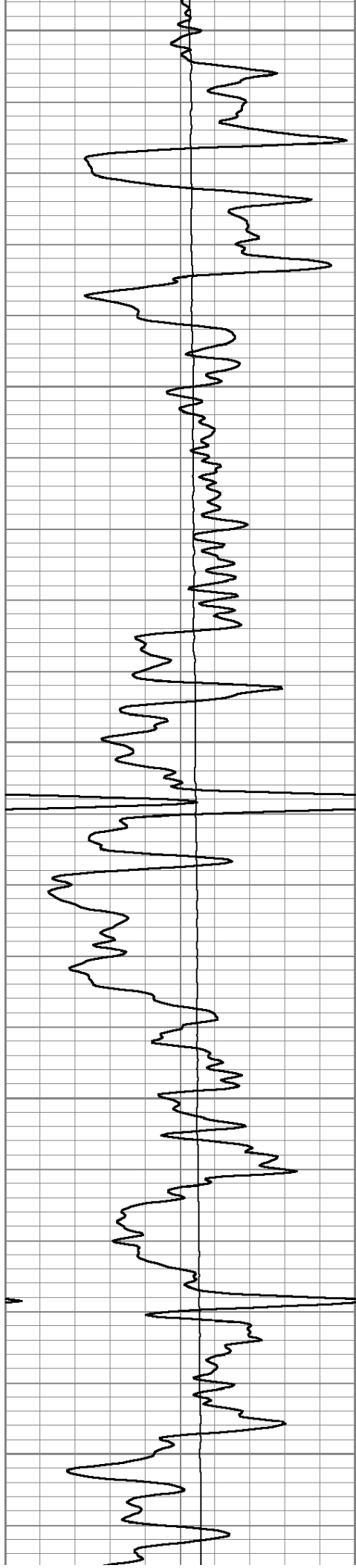
2350

2400

2450

2500





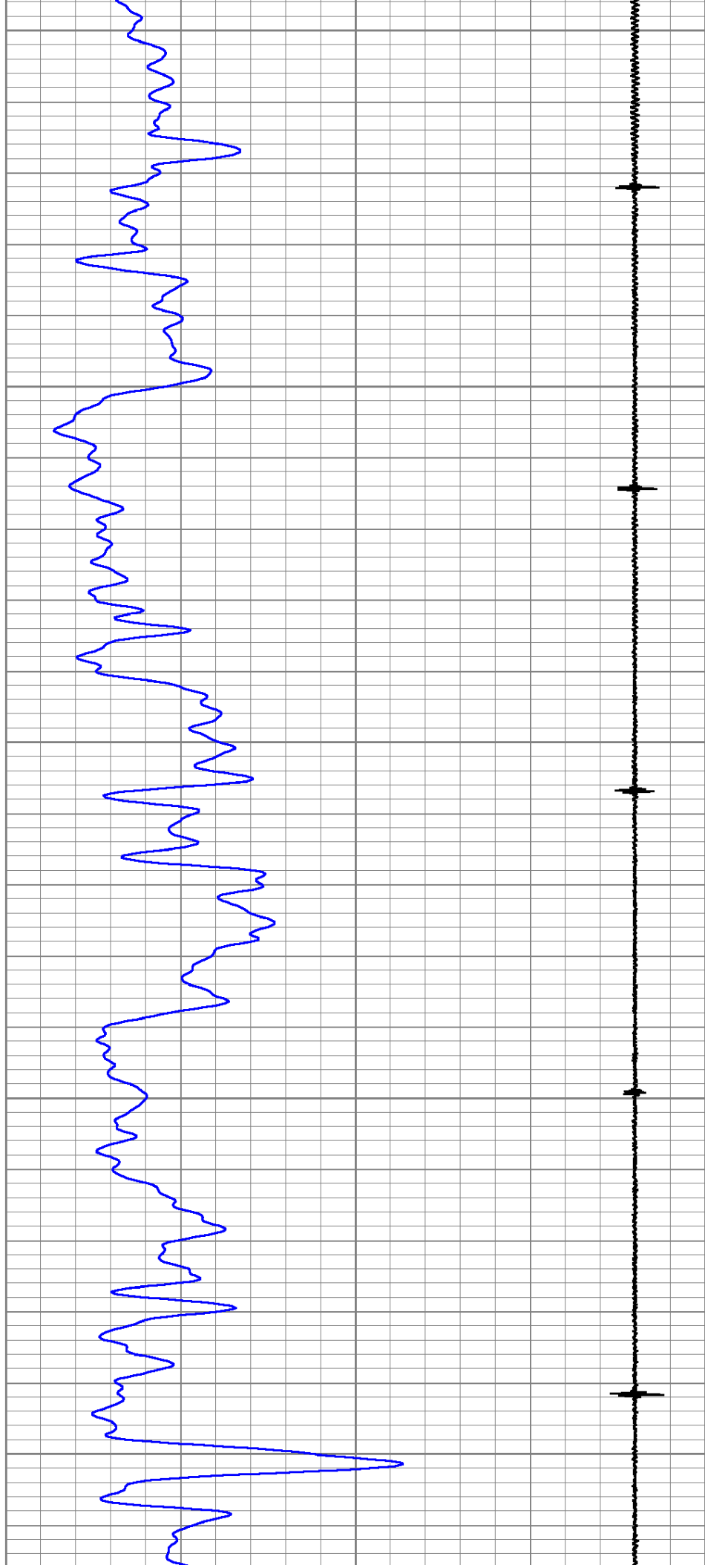
2550

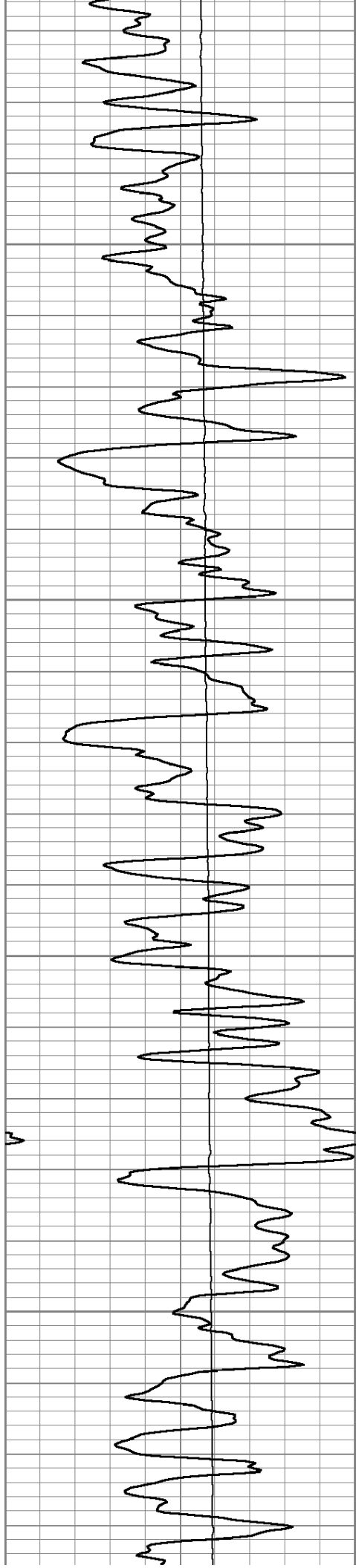
2600

2650

2700

2750



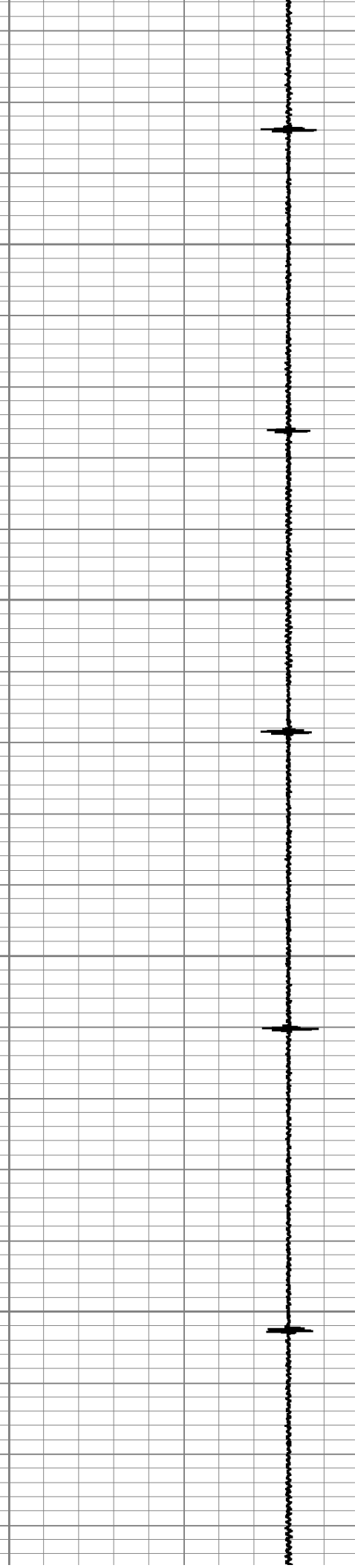
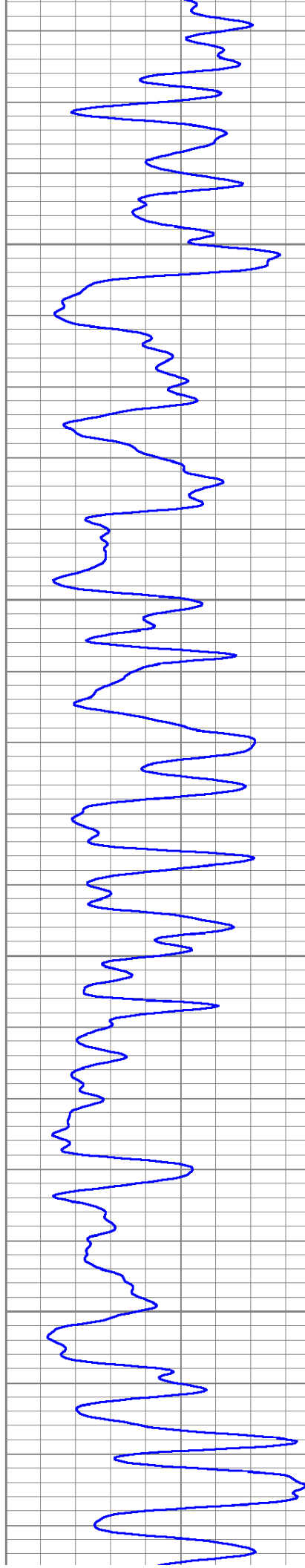


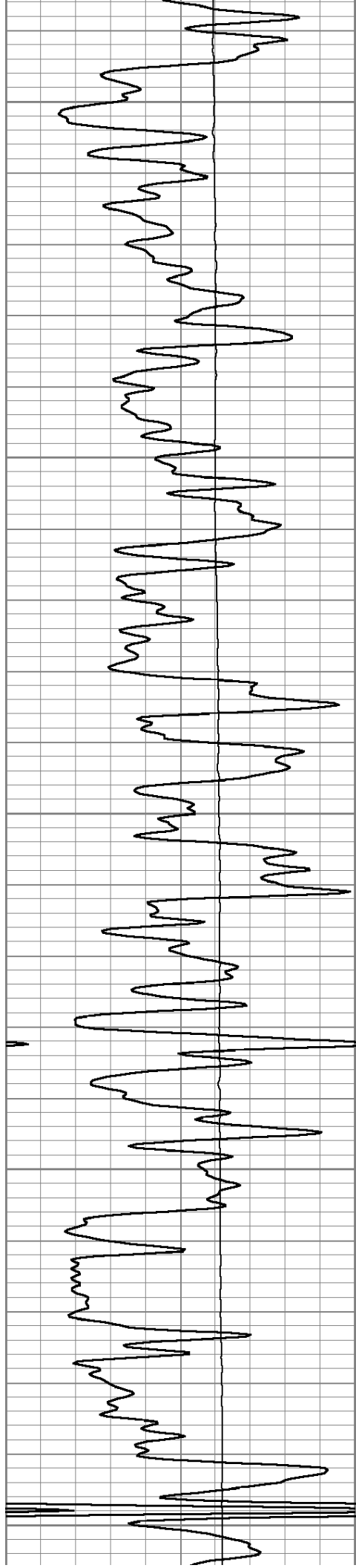
2800

2850

2900

2950





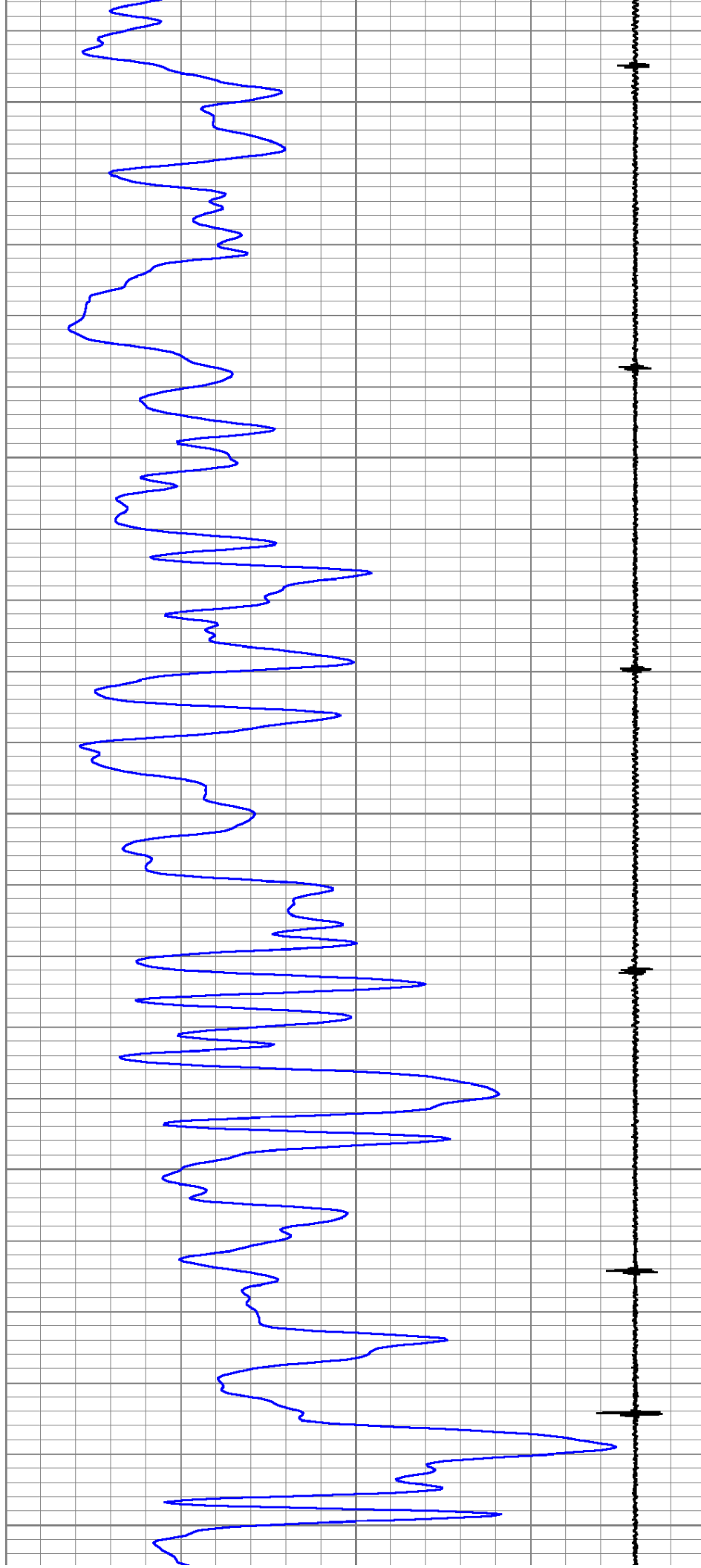
3000

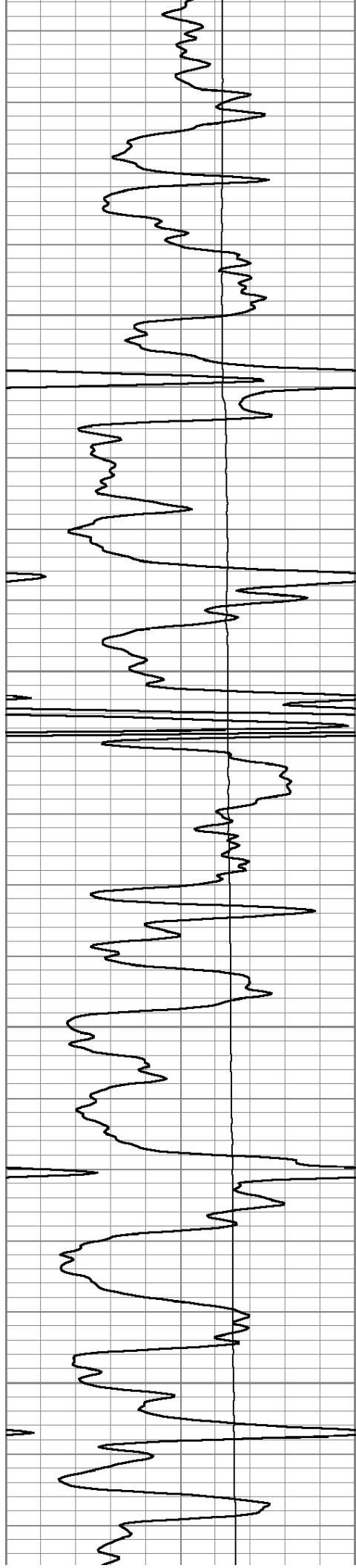
3050

3100

3150

3200





3250

3300

3350

3400

