



**WIRELINE
SERVICES, INC.**
CHANUTE, KANSAS

**GAMMA RAY
NEUTRON
COMPLETION LOG**

Company **TOWN OIL COMPANY, INC.**
Well **SAVAGE #6W**
Field **PAOLA - RANTOUL**
County **FRANKLIN**
State **KANSAS**

Company **TOWN OIL COMPANY, INC.**
Well **SAVAGE #6W**
Field **PAOLA - RANTOUL**
County **FRANKLIN** State **KANSAS**

Location: API # : 15-059-26690-00-00 Other Services
3650' FSL & 5260 FEL
NW NW SW NW
SEC 5 TWP 18S RGE 21E
Permanent Datum GL Elevation 1049'EST
Log Measured From GL K.B.
Drilling Measured From GL D.F.
G.L. 1049'EST.

| | | | |
|------------------------|-------------|---|---|
| Date | 7-30-14 | | |
| Run Number | 1 NW | | |
| Depth Driller | 716' | | |
| Depth Logger | 713.7' | | |
| Top Log Interval | 0 | | |
| Bottom Logged Interval | 713.7' | | |
| Fluid Level | FULL | | |
| Type Fluid | WATER | | |
| Production Casing | 2 7/8" @ TD | @ | @ |
| Max. Recorded Temp. | | | |
| Estimated Cement Top | | | |
| Calculated Cement Top | | | |
| Amount & Type Cement | | | |
| Amount & Type Admix | | | |
| Drilling Contractor | | | |
| Equipment Number | 103 | | |
| Location | | | |
| Recorded By | SOLOMON, B. | | |
| Witnessed By | TOWN, L. | | |

<<< Fold Here >>>

All interpretations are opinions based on inferences from electrical or other measurements and we cannot and do not guarantee the accuracy or correctness of any interpretation, and we shall not, except in the case of gross or willful negligence on our part, be liable or responsible for any loss, costs, damages, or expenses incurred or sustained by anyone resulting from any interpretation made by any of our officers, agents or employees. These interpretations are also subject to our general terms and conditions set out in our current Price Schedule.

Comments

THANK YOU

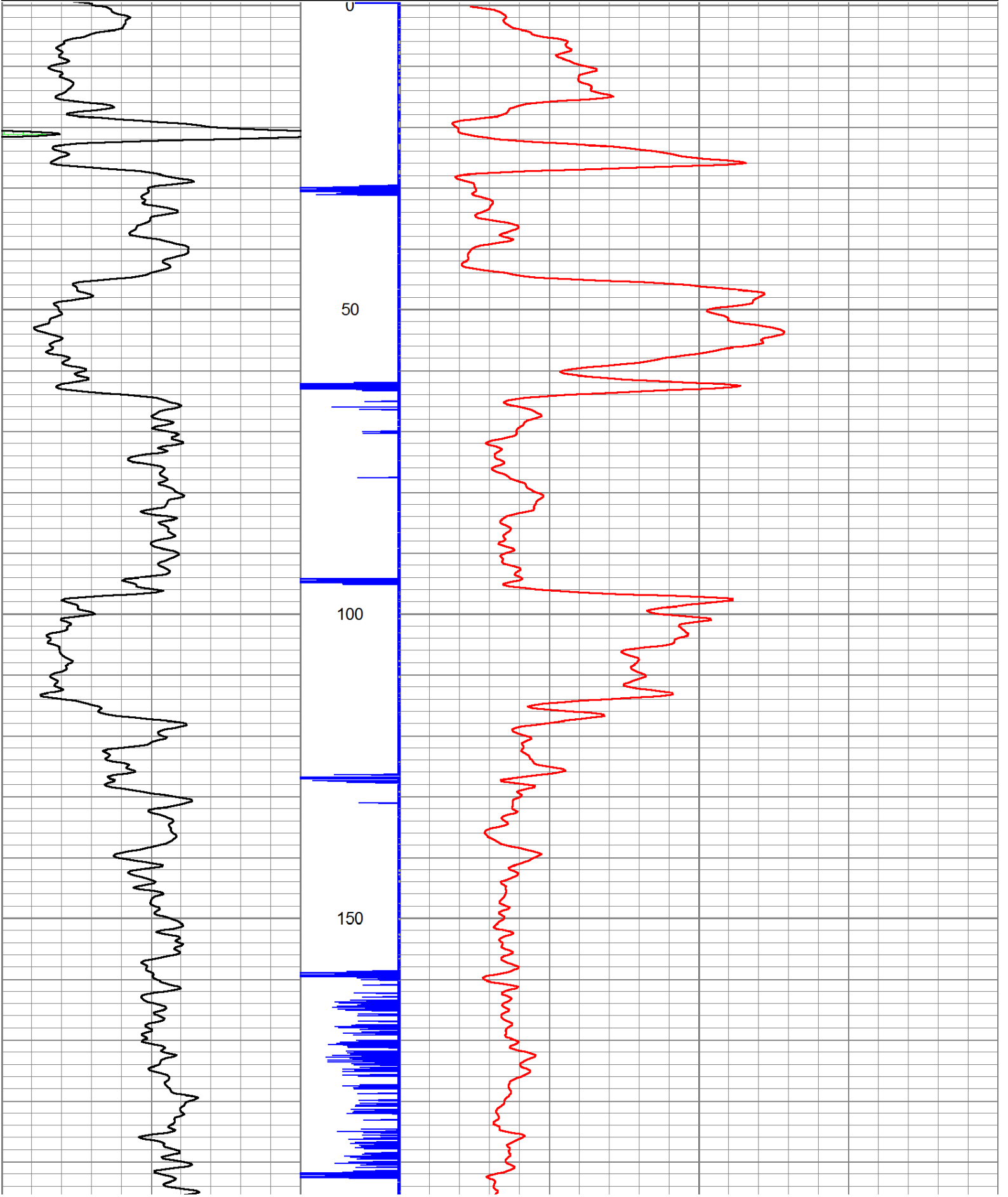
| Sensor | Offset (ft) | Schematic | Description | Len (ft) | OD (in) | Wt (lb) |
|--------|-------------|-----------|-------------|----------|---------|---------|
| | | | | | | |

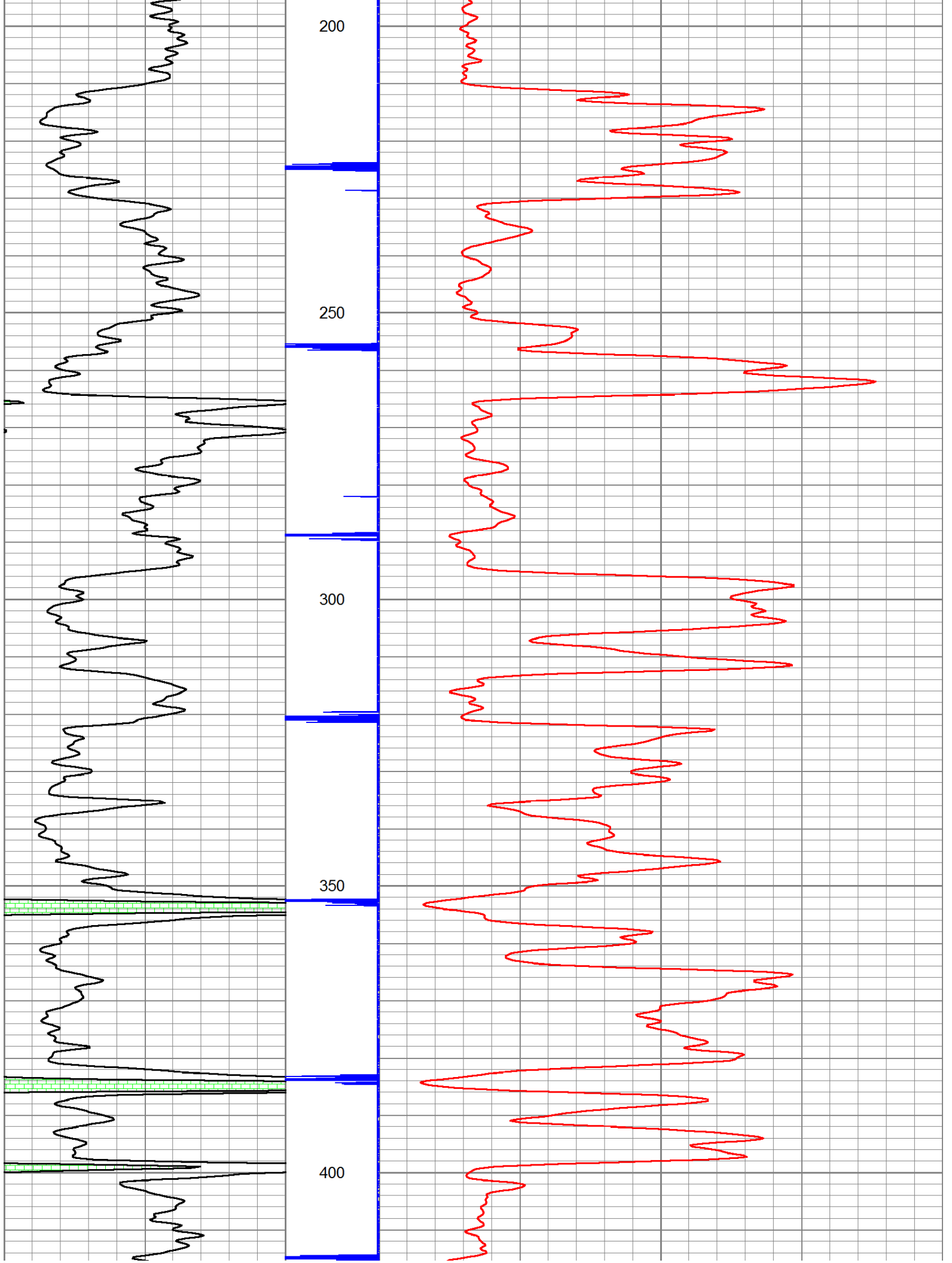
| | | | | | | |
|-----|------|--|-------------------------------------------------------|------|------|-------|
| GR | 7.59 | | GR-TITAN_169 (TIT169_001) Titan 1 11/16" Gamma Ray | 4.75 | 1.69 | 20.00 |
| CCL | 5.05 | | CCL-TITAN_169 (TIT169) Titan 1 11/16" Logging CCL | 1.83 | 1.69 | 7.50 |
| NEU | 0.63 | | NEU-TITAN (TIT801) TITAN 1 11/16" Neutron | 4.33 | 1.69 | 25.00 |

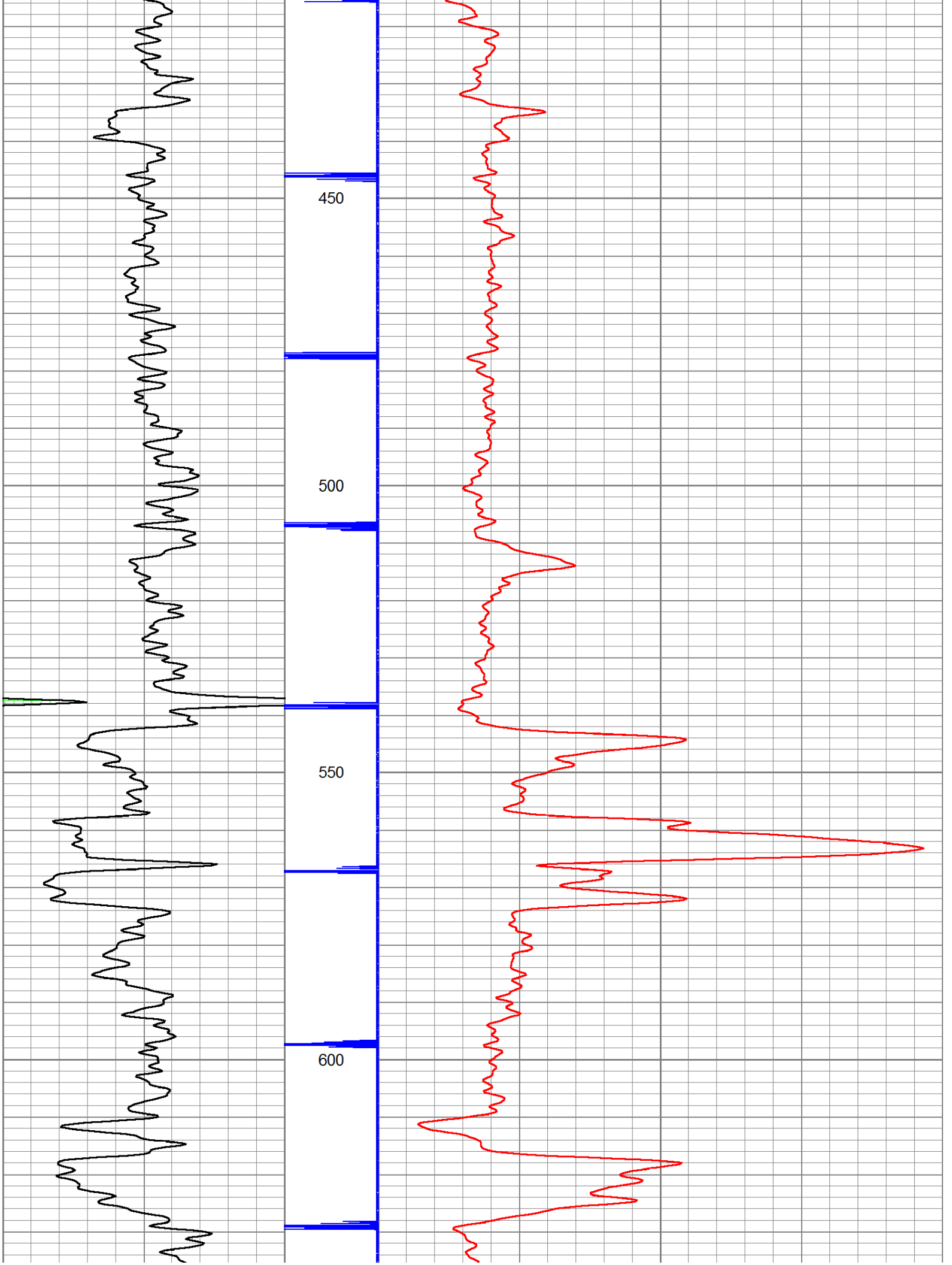
Dataset: savage #6w.db: field/well/run1/pass1
 Total Length: 10.92 ft
 Total Weight: 52.50 lb
 O.D.: 1.69 in

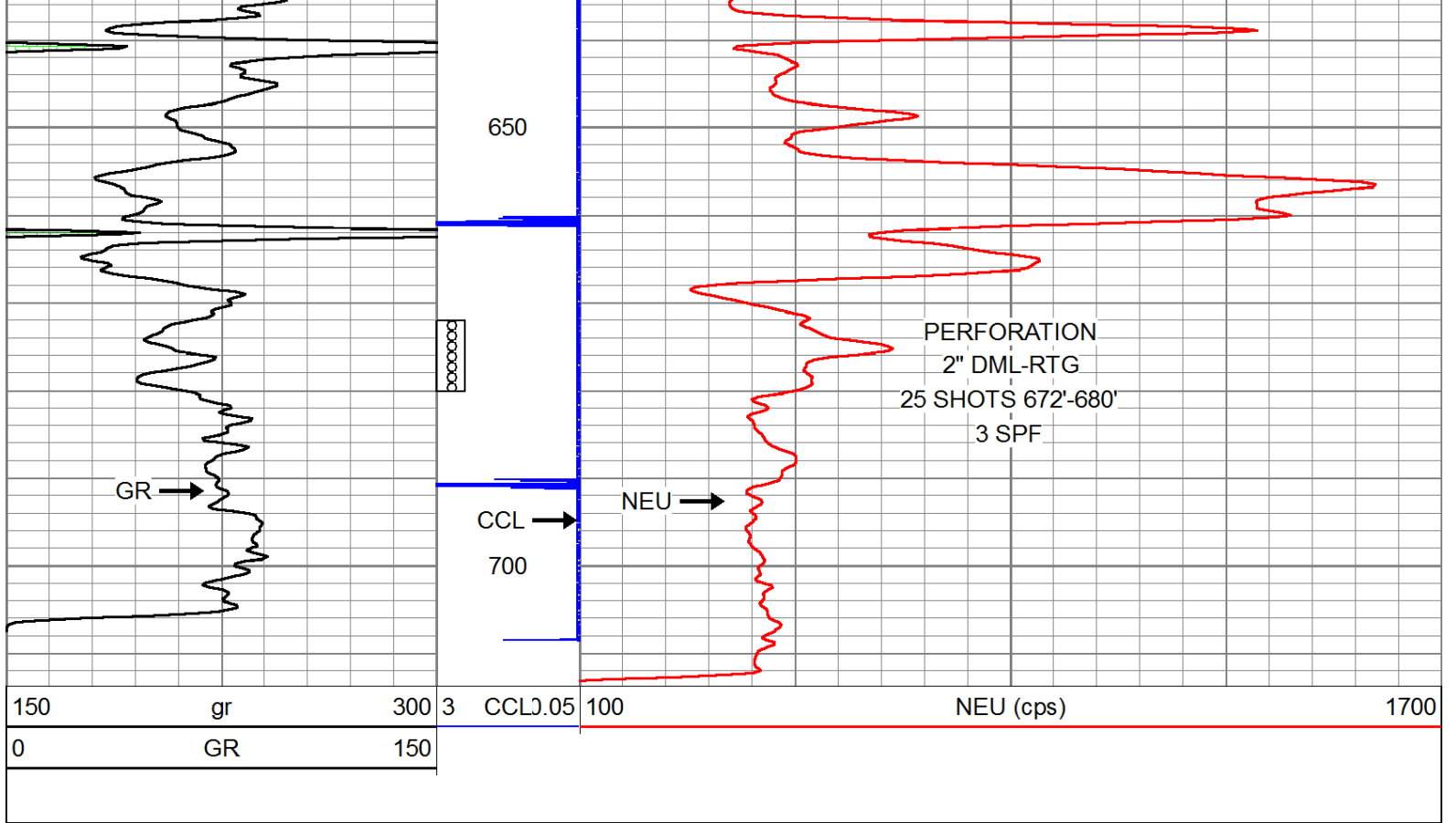
Database File: e:\savage #6w.db
 Dataset Pathname: pass1
 Presentation Format: gr-n-ccl

| | | | | | | | |
|-----|----|-----|---|---------|-----|-----------|------|
| 150 | gr | 300 | 3 | CCLJ.05 | 100 | NEU (cps) | 1700 |
| 0 | GR | 150 | | | | | |









| | |
|---------|-----------------------------------|
| Company | TOWN OIL COMPANY, INC. |
| Well | SAVAGE #6W |
| Field | PAOLA - RANTOUL |
| County | FRANKLIN SEC. 5 TWP. 18S RGE. 21E |
| State | KANSAS |
| Date | 7-30-14 |