



WIRELINE SERVICES, INC.
CHANUTE, KANSAS

**GAMMA RAY
NEUTRON
COMPLETION LOG**

Company **TOWN OIL COMPANY, INC.**
Well **SAVAGE #2-W**
Field **PAOLA - RANTOUL**
County **FRANKLIN**
State **KANSAS**

Company **TOWN OIL COMPANY, INC.**
Well **SAVAGE #2-W**
Field **PAOLA - RANTOUL**
County **FRANKLIN** State **KANSAS**

Location: API # : 15-059-26524-00-00 Other Services
3320' FSL & 4930' FEL
SE NW SW NW
SEC 5 TWP 18S RGE 21E
Permanent Datum GL Elevation 1057EST
Log Measured From GL K.B.
Drilling Measured From GL D.F.
G.L. 1057EST.

Date	7-30-14		
Run Number	1 NW		
Depth Driller	709'		
Depth Logger	706'		
Top Log Interval	0		
Bottom Logged Interval	706'		
Fluid Level	FULL		
Type Fluid	WATER		
Production Casing	2 7/8" @ TD	@	@
Max. Recorded Temp.			
Estimated Cement Top			
Calculated Cement Top			
Amount & Type Cement			
Amount & Type Admix			
Drilling Contractor			
Equipment Number	103		
Location			
Recorded By	SOLOMON, B.		
Witnessed By	TOWN, L.		

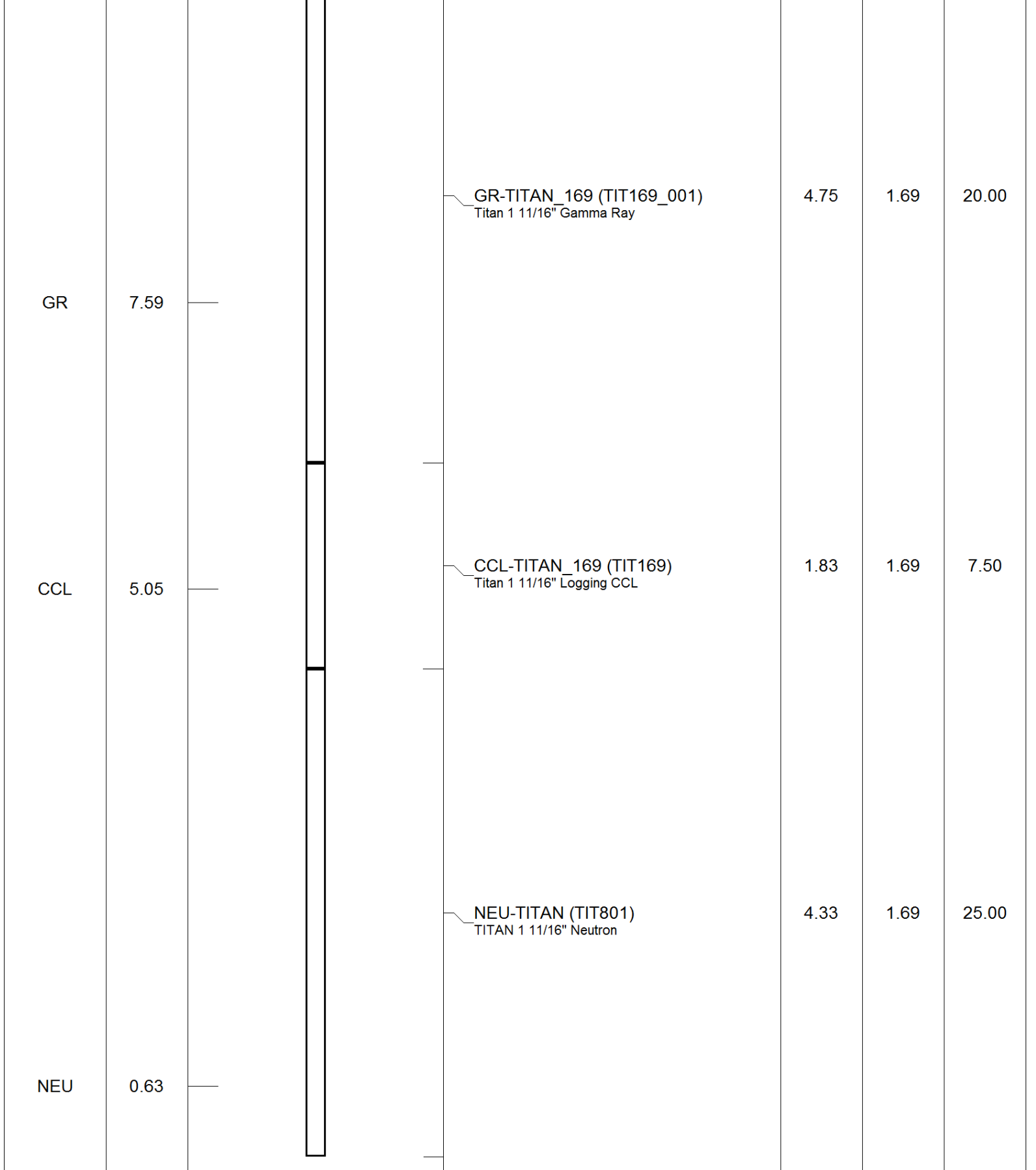
<<< Fold Here >>>

All interpretations are opinions based on inferences from electrical or other measurements and we cannot and do not guarantee the accuracy or correctness of any interpretation, and we shall not, except in the case of gross or willful negligence on our part, be liable or responsible for any loss, costs, damages, or expenses incurred or sustained by anyone resulting from any interpretation made by any of our officers, agents or employees. These interpretations are also subject to our general terms and conditions set out in our current Price Schedule.

Comments

THANK YOU

Sensor	Offset (ft)	Schematic	Description	Len (ft)	OD (in)	Wt (lb)



GR-TITAN_169 (TIT169_001)
Titan 1 11/16" Gamma Ray

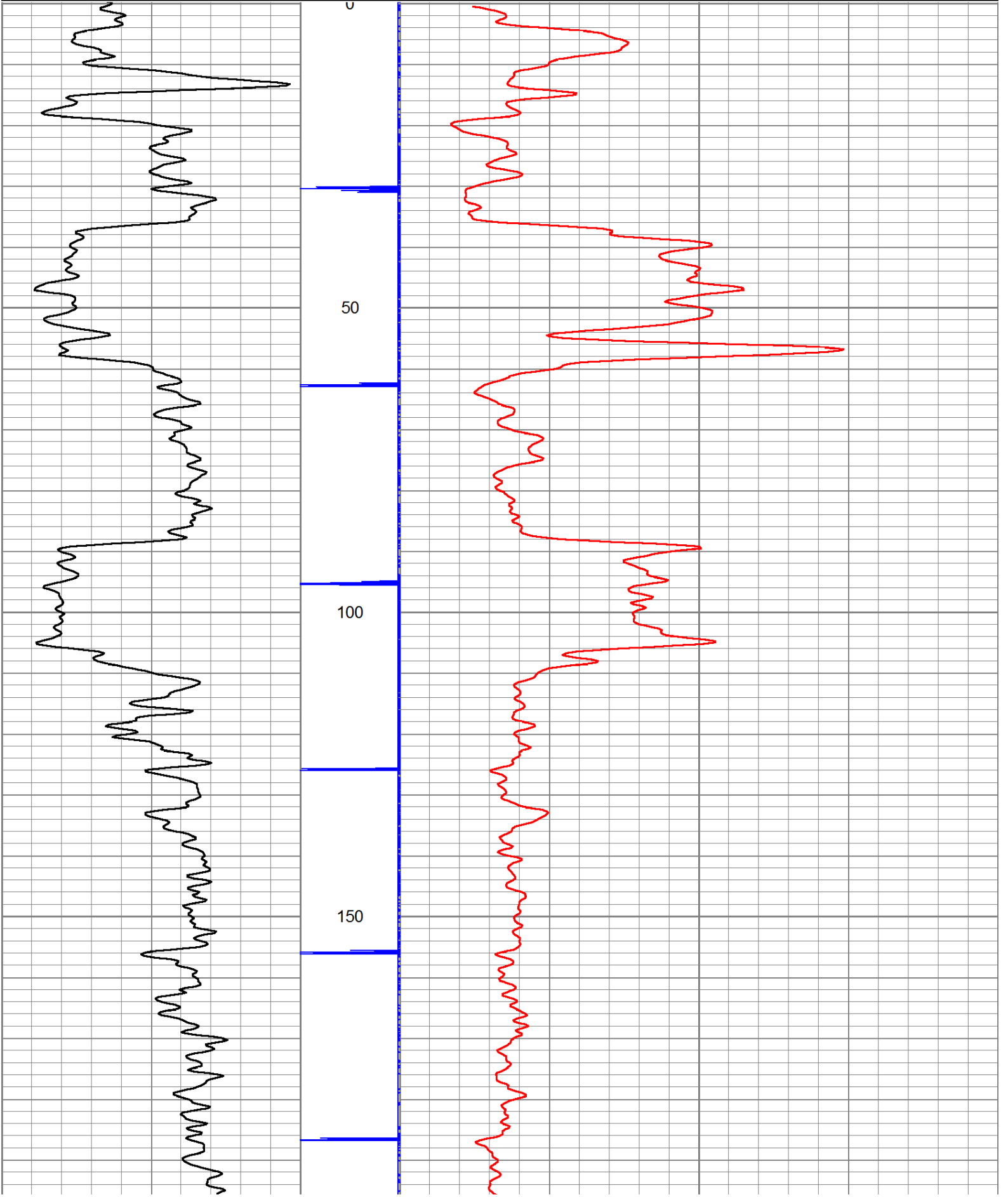
CCL-TITAN_169 (TIT169)
Titan 1 11/16" Logging CCL

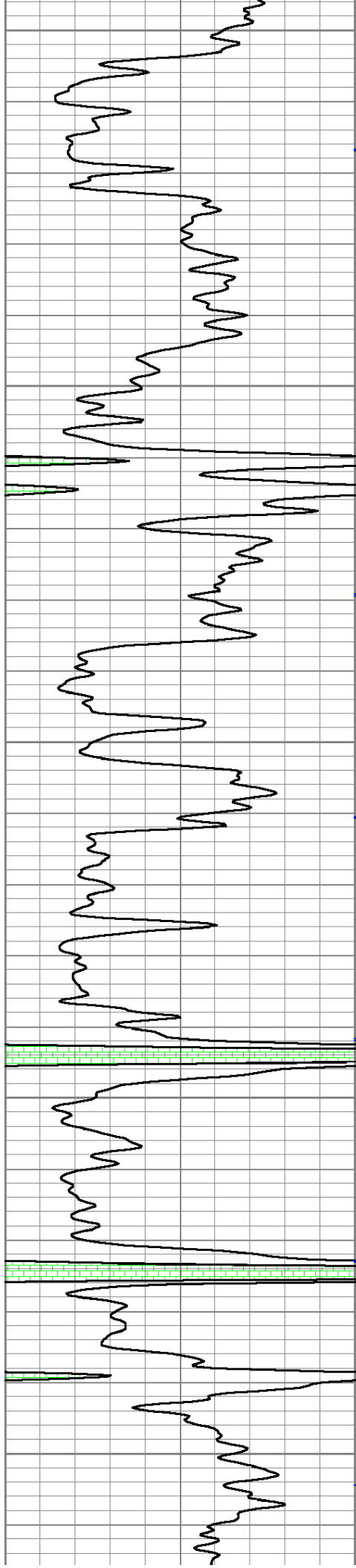
NEU-TITAN (TIT801)
TITAN 1 11/16" Neutron

Dataset: savage #2-w.db: field/well/run1/pass1
 Total Length: 10.92 ft
 Total Weight: 52.50 lb
 O.D.: 1.69 in

Database File: e:\savage #2-w.db
 Dataset Pathname: pass1
 Presentation Format: gr-n-ccl

150	gr	300	3	CCLJ.05	100	NEU (cps)	1700
0	GR	150					





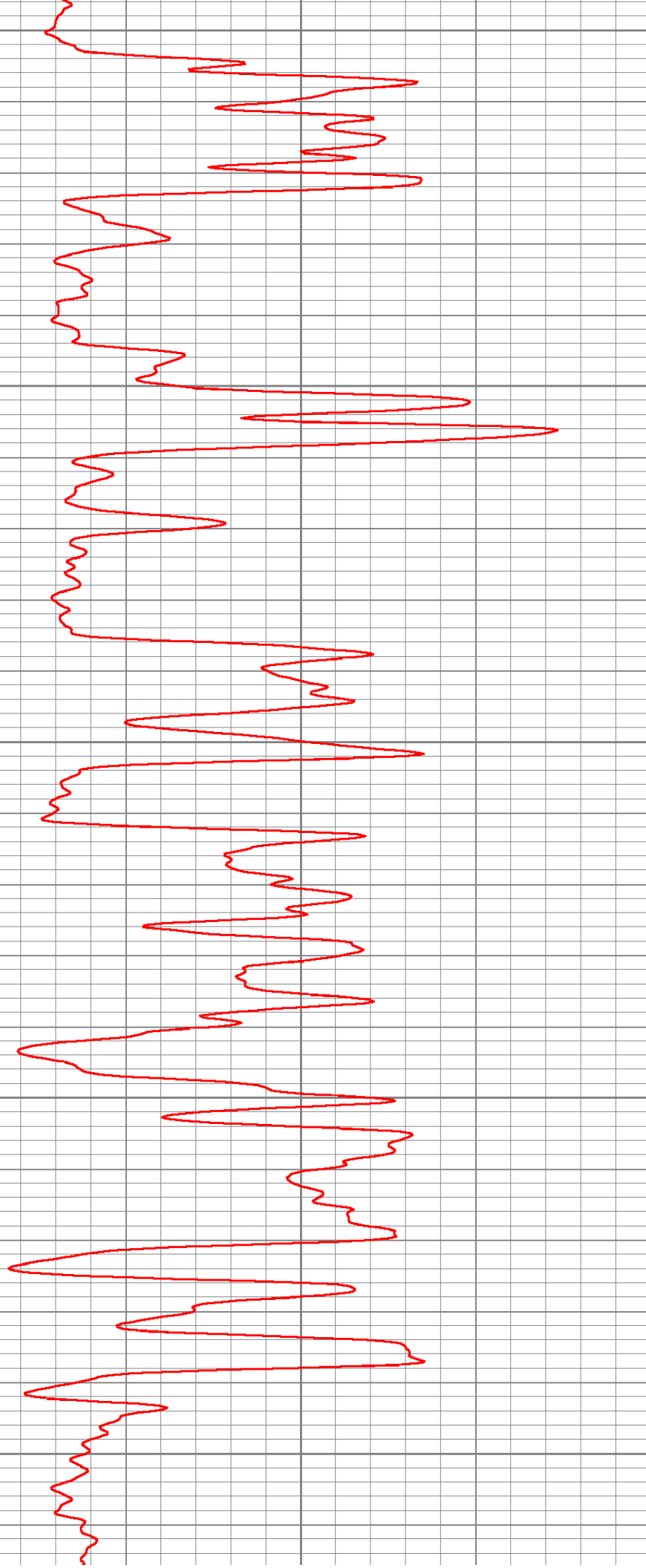
200

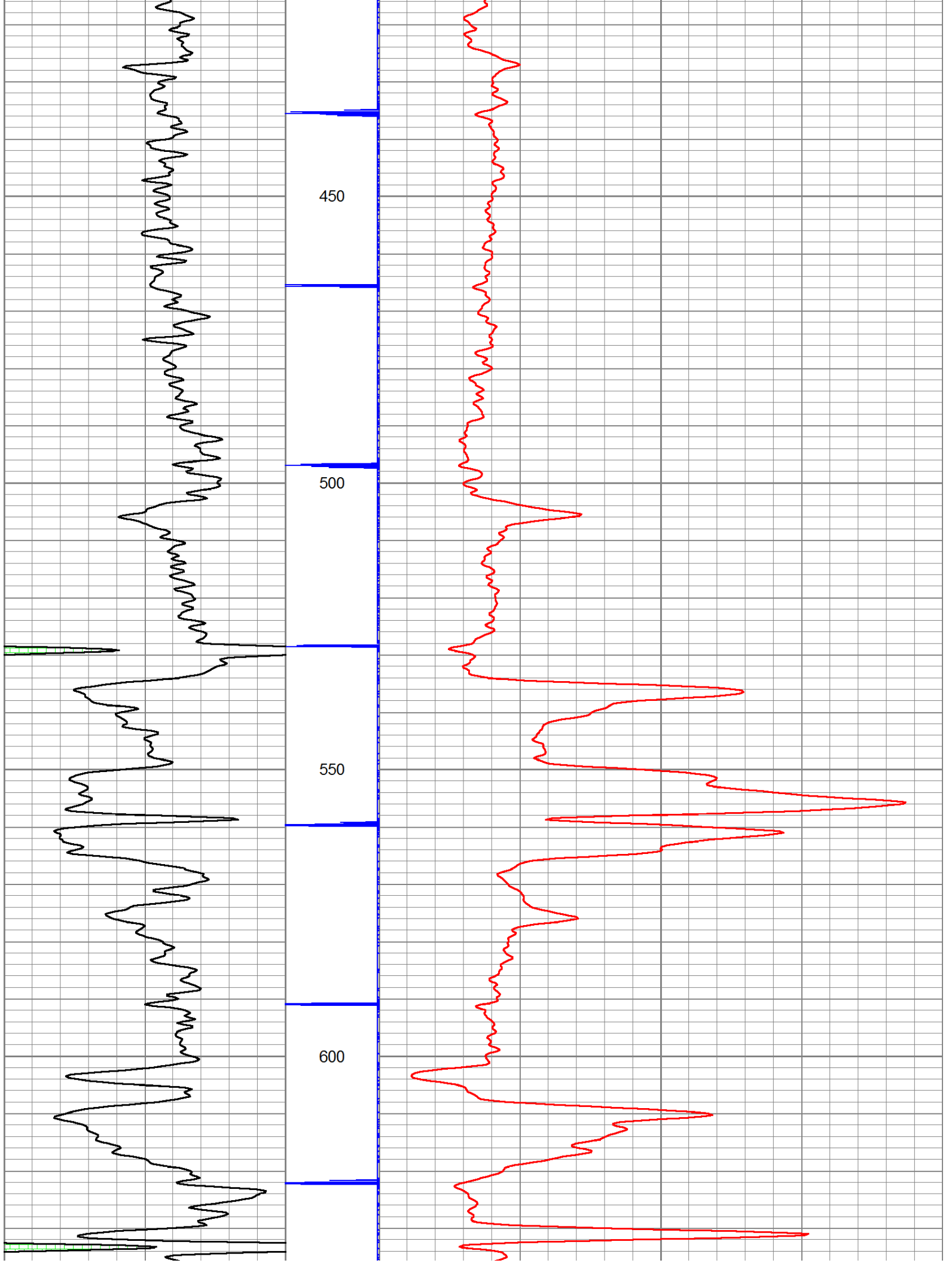
250

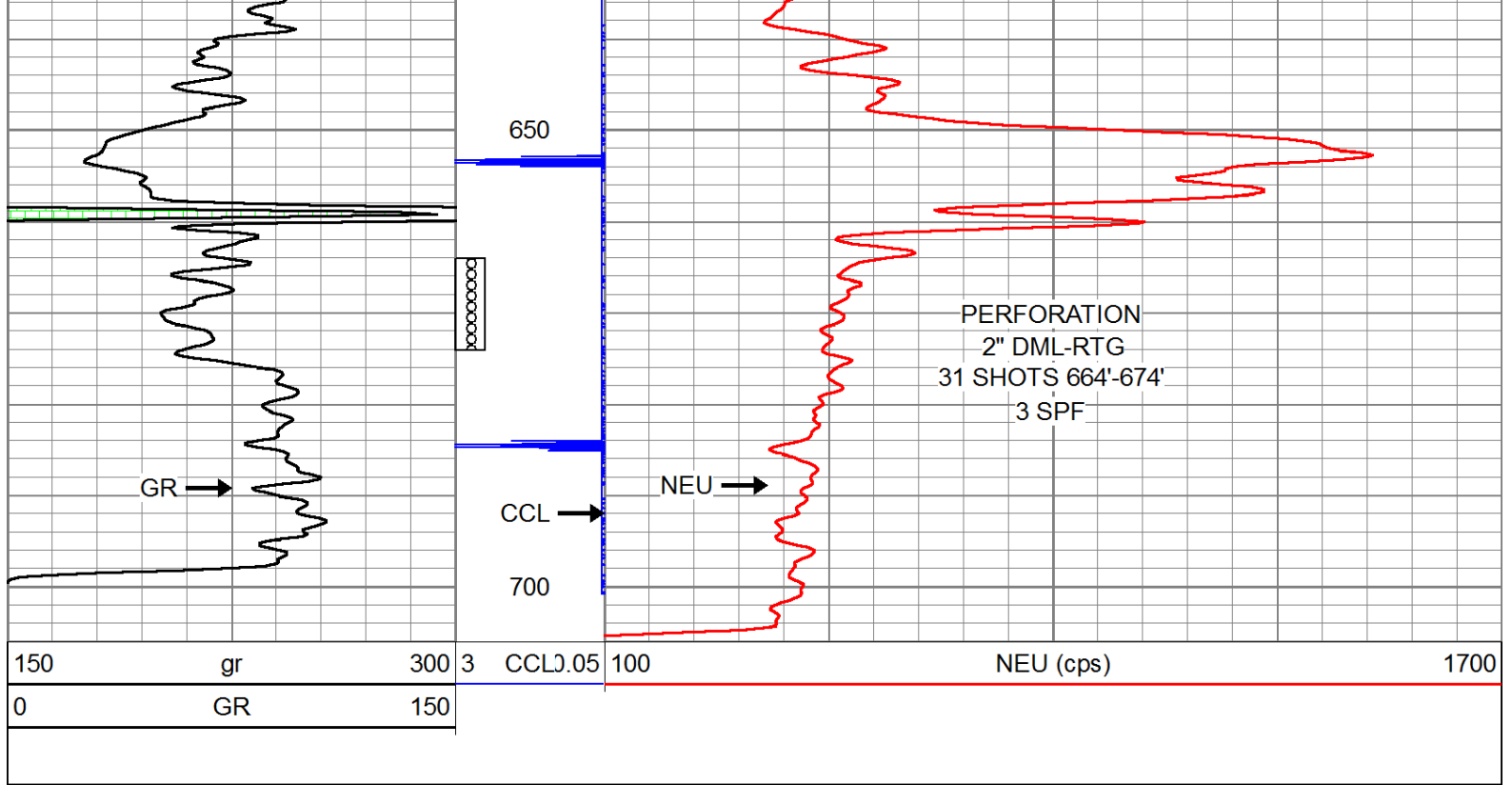
300

350

400







Company TOWN OIL COMPANY, INC.
 Well SAVAGE #2-W
 Field PAOLA - RANTOUL
 County FRANKLIN SEC. 5 TWP. 18S RGE. 21E
 State KANSAS Date 7-30-14