

MIDWEST SURVEYS
 LOGGING - PERFORATING - CONSULTING SERVICES
 P.O. Box 68, Osawatomie, KS 66064
 913.735.2128

GAMMA RAY / NEUTRON / CCL

File No. _____

Company Legend Oil & Gas, LTD

Well Patrick Collins No. - 11

Field Humboldt - Chanute

County Woodson State Kansas

Location _____

1155' FSL & 1155' FEL
 NW-NW-SE-SE

Other Services Perforate

Sec. 17 Typ. 25s Ege. 17e

Permanent Datum GL Elevation NA

Log Measured From GL

Drilling Measured From GL

Elevation K.B. NA
 D.F. NA
 G.L. NA

Date 01-08-2014

Run Number One

Depth Driller 891.0

Depth Logger 884.9

Bottom Logged Interval 883.9

Top Log Interval 20.0

Fluid Level Full

Type Fluid Water

Density / Viscosity NA

Salinity - PPM Cl NA

Max Recorded Temp NA

Estimated Cement Top 0.0

Equipment No. Location 107 Osawatomie

BORE-HOLE RECORD		CASINGS RECORD				
NO.	BIT	TO	SIZE	WGT.	FROM	TO
One	11.00"	0.0	7.00"	17.0 #	0.0	20.0
Two	5.375"	20.0	831.0	2.875"	6.5 #	890.0

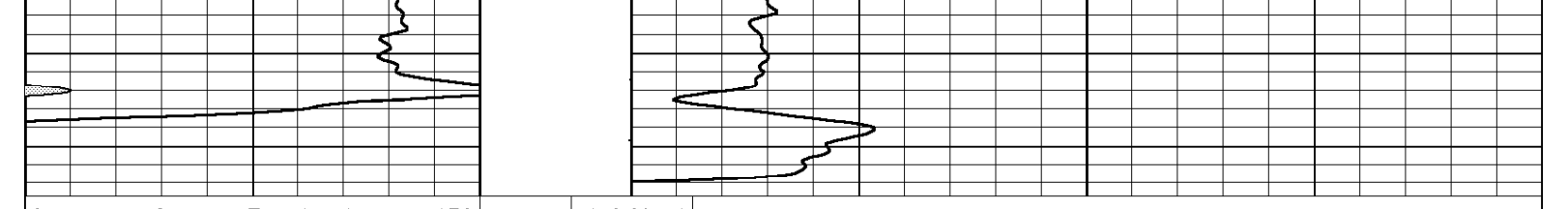
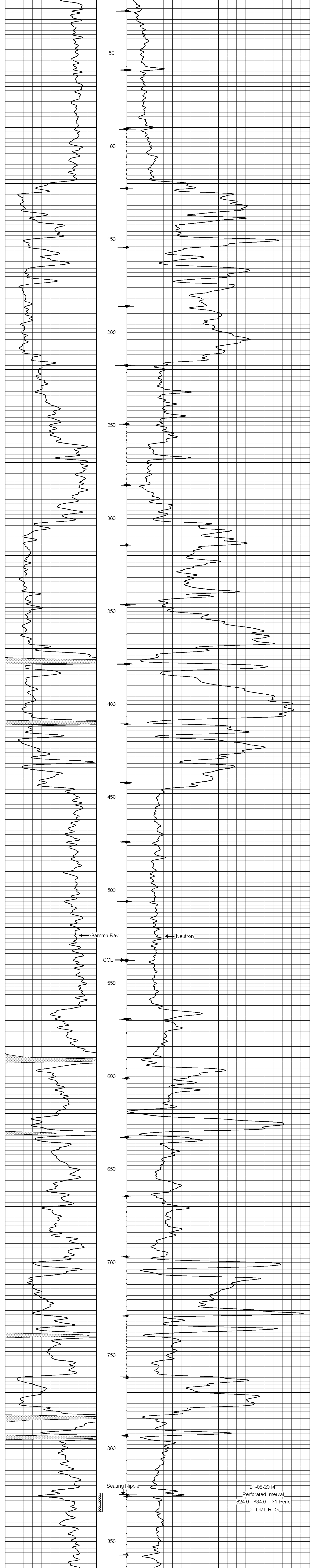
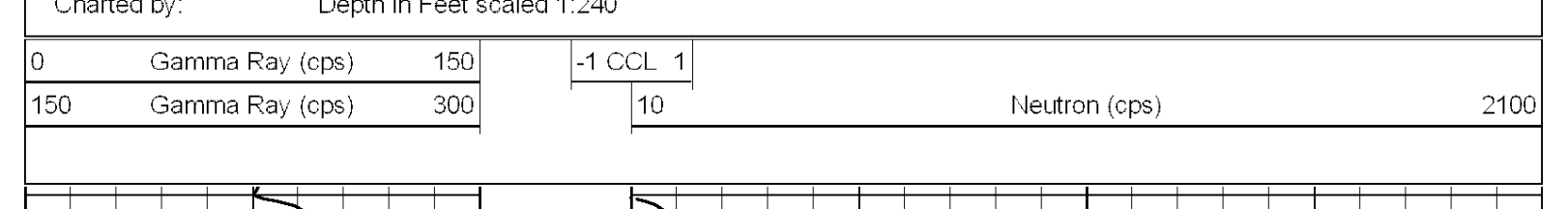
<<< Fold Here >>>

All interpretations are opinions based on inferences from electrical or other measurements and we cannot and do not guarantee the accuracy or correctness of any interpretation, and we shall not, except in the case of gross or willful negligence on our part, be liable or responsible for any loss, costs, damages, or expenses incurred or sustained by anyone resulting from any interpretation made by any of our officers, agents or employees. These interpretations are also subject to our general terms and conditions set out in our current Price Schedule.

Comments

Drilling Contractor :
 Owens Petroleum Services, LLC

Database File: pat collins11.db
 Dataset Pathname: pass1
 Presentation Format: gr-n-ccl
 Dataset Creation: Wed Jan 08 10:38:27 2014 by Log SCH 111116
 Charted by: Depth in Feet scaled 1:240



01-08-2014
 Perforated Interval 824.0 - 834.0 31 Perfs
 2" DML RTG