



**MIDWEST SURVEYS**  
 LOGGING - PERFORATING - CONSULTING SERVICES  
 P.O. Box 68, Ocala, Florida, FL 32064  
 913.735.2128

**GAMMA RAY / NEUTRON / CCL**

File No.

Company Legends Oil & Gas, Ltd

Well Patrick Collins No. - 15

Field Humboldt - Chanute

County Woodson State Kansas

Location

1815 FSL & 495 FFL

NW-SE-NE-SE

Sec. 17 Typ. 25s Fgs. 17e

Permanent Datum Log Measured From Drilling Measured From

GL GL GL

Elevation

K.B. NA D.F. NA G.L. NA

Date 06-25-2014

Run Number One

Depth Driller 882.0

Bottom Logged Interval 874.3

Fluid Level 20.0

Fluid Level Full

Type Fluid Water

Density / Viscosity NA NA

Salinity - PPM Cl NA NA

Max. Recorded Temp NA

Estimated Cement Top 0.0

Equipment No. Location 107 Osawatimie

Recorded By Steve Winkler

Missused By Marshall Diamond-Gallagher

BORE-HOLE RECORD

RUN No. BIT FROM TO SIZE WGT. FROM TO

One 11.00" 0.0 7.00" 21.0 17.0# 0.0

Two 5.575" 21.0 832.0 2.875" 6.5# 0.0

CASING RECORD

TO 21.0

881.0

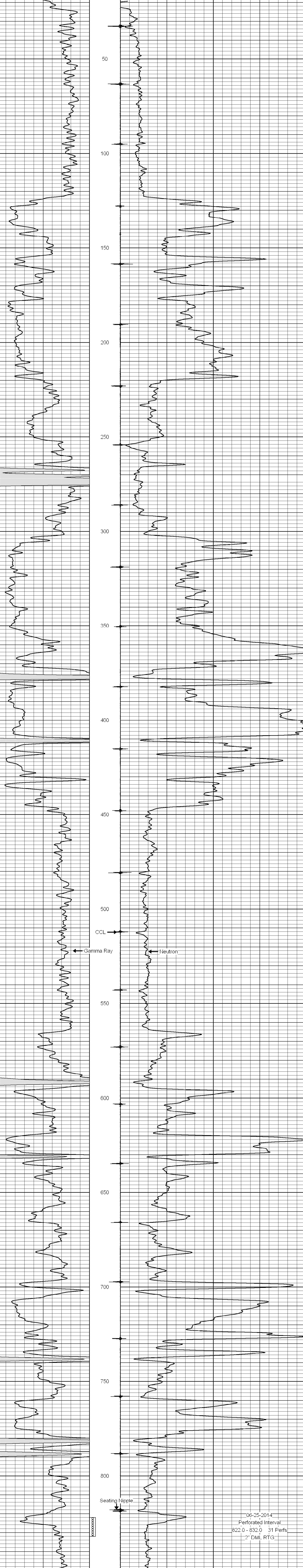
<<< Fold Here >>>

All interpretations are opinions based on inferences from electrical or other measurements and we cannot and do not guarantee the accuracy or correctness of any interpretation, and we shall not, except in the case of gross or willful negligence on our part, be liable or responsible for any loss, costs, damages, or expenses incurred or sustained by anyone resulting from any interpretation made by any of our officers, agents or employees. These interpretations are also subject to our general terms and conditions set out in our current Price Schedule.

Comments

Drilling Contractor :  
Owens Petroleum Services

Database File: pat collins15.db  
 Dataset Pathname: pass1  
 Presentation Format: gr-n-ccl  
 Dataset Creation: Wed Jun 25 10:25:05 2014 by Log SCH 111116  
 Charted by: Depth in Feet scaled 1:240



06-25-2014  
 Perforated Interval  
 822.0 - 832.0 31 Perfs  
 2" DML RTG

0 Gamma Ray (cps) 150  
 150 Gamma Ray (cps) 300

-1 CCL 1  
 10 Neutron (cps) 2100