



**COMPLETION
& PRODUCTION
SERVICES CO.**

**MICRO
LOG**

Company DOWNING - NELSON OIL CO. INC.
Well SEITZ - BARNHARDT C #5
Field RIDGEWAY
County TREGO
State KANSAS

Company DOWNING - NELSON OIL COMPANY, INC.
Well SEITZ - BARNHARDT C #5
Field RIDGEWAY
County TREGO State KANSAS

Location: API # : 15-195-22952-0000
1235' FNL & 1070' FEL
SW - SW - NE - NE
SEC 34 TWP 12S RGE 21W
Permanent Datum GROUND LEVEL Elevation 2194
Log Measured From KELLY BUSHING 8' A.G.L.
Drilling Measured From KELLY BUSHING
Other Services
CDL/CNL
DIL
Elevation
K.B. 2202
D.F. 2200
G.L. 2194

Date	7/8/14		
Run Number	TWO		
Depth Driller	3959		
Depth Logger	3961		
Bottom Logged Interval	3959		
Top Log Interval	3200		
Casing Driller	8 5/8"@22'		
Casing Logger	221		
Bit Size	7 7/8"		
Type Fluid in Hole	CHEMICAL MUD	CHLORIDES 3,000 PPM	
Density / Viscosity	9.2/59		
pH / Fluid Loss	10.0/7.6		
Source of Sample	FLOWLINE		
Rim @ Meas. Temp	.700@90F		
Rmf @ Meas. Temp	.525@90F		
Rmc @ Meas. Temp	.840@90F		
Source of Rmf / Rmc	MEASUREMENT		
Rim @ BHT	.543@116F		
Time Circulation Stopped	4 HOURS		
Time Logger on Bottom	8:45 A.M.		
Maximum Recorded Temperature	116F		
Equipment Number	4854		
Location	HAYS, KANSAS		
Recorded By	JEFF LUEBBERS		
Witnessed By	RON NELSON		

<<< Fold Here >>>

All interpretations are opinions based on inferences from electrical or other measurements and we cannot and do not guarantee the accuracy or correctness of any interpretation, and we shall not, except in the case of gross or willful negligence on our part, be liable or responsible for any loss, costs, damages, or expenses incurred or sustained by anyone resulting from any interpretation made by any of our officers, agents or employees. These interpretations are also subject to our general terms and conditions set out in our current Price Schedule.

Comments

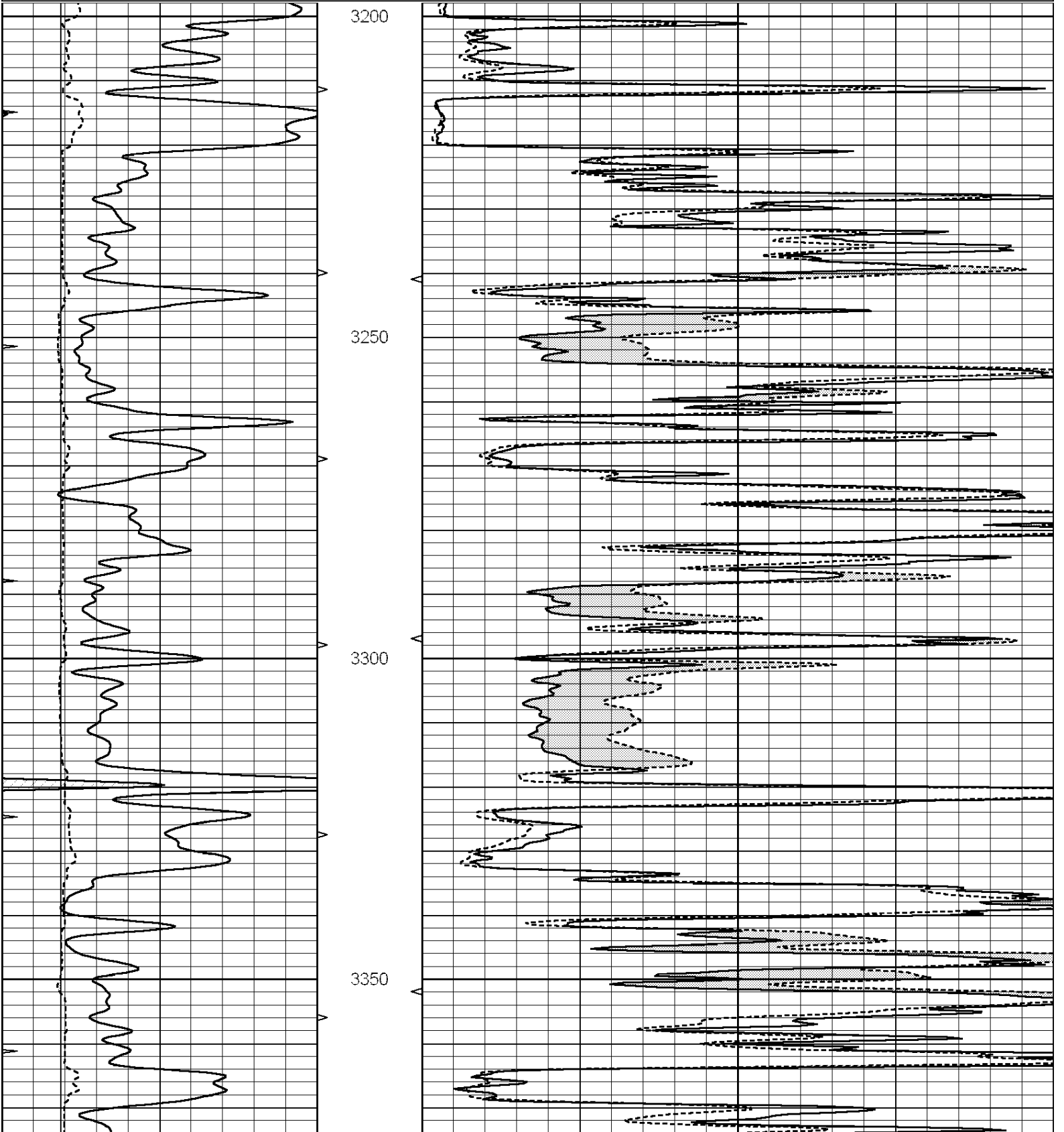
THANK YOU FOR USING "NABORS" HAYS, KANSAS (785) 628-6395
DIRECTIONS
RIGA & I-70, 1N., 1/2E. TO TANK BATTERY, S. INTO

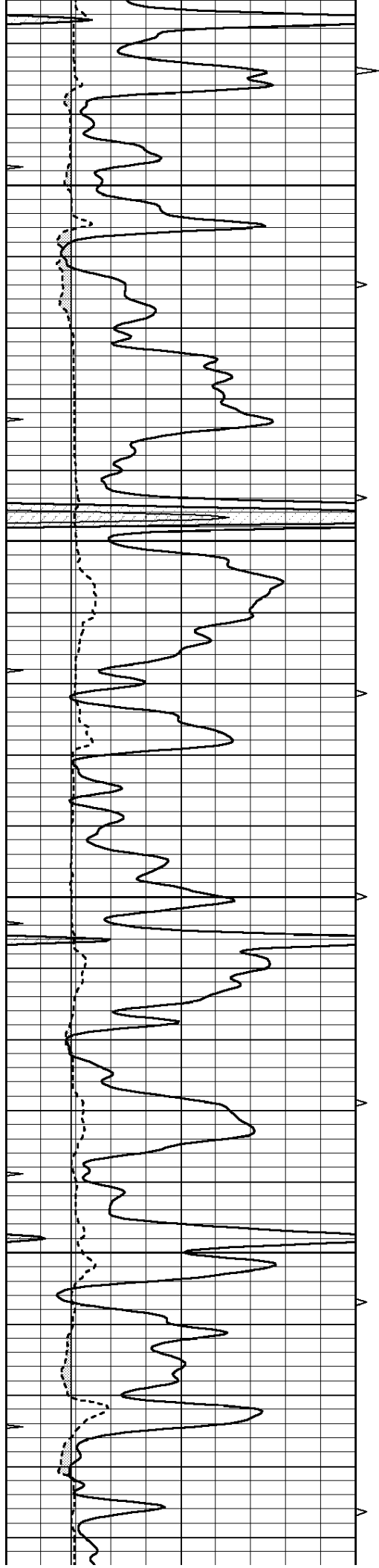


MAIN SECTION

Database File: 24551ddn.db
 Dataset Pathname: pass9.4
 Presentation Format: micro
 Dataset Creation: Tue Jul 08 12:56:03 2014 by Calc SOC 120430
 Charted by: Depth in Feet scaled 1:240

0	GAMMA RAY (GAPI)	150	ABHV	0	MEL1.5 (Ohm-m)	40
6	CALIPER (in)	16	10 (ft3)	0	MEL 20 (Ohm-m)	40
0	MINMK	20	TBHV			
			0 (ft3)	10		



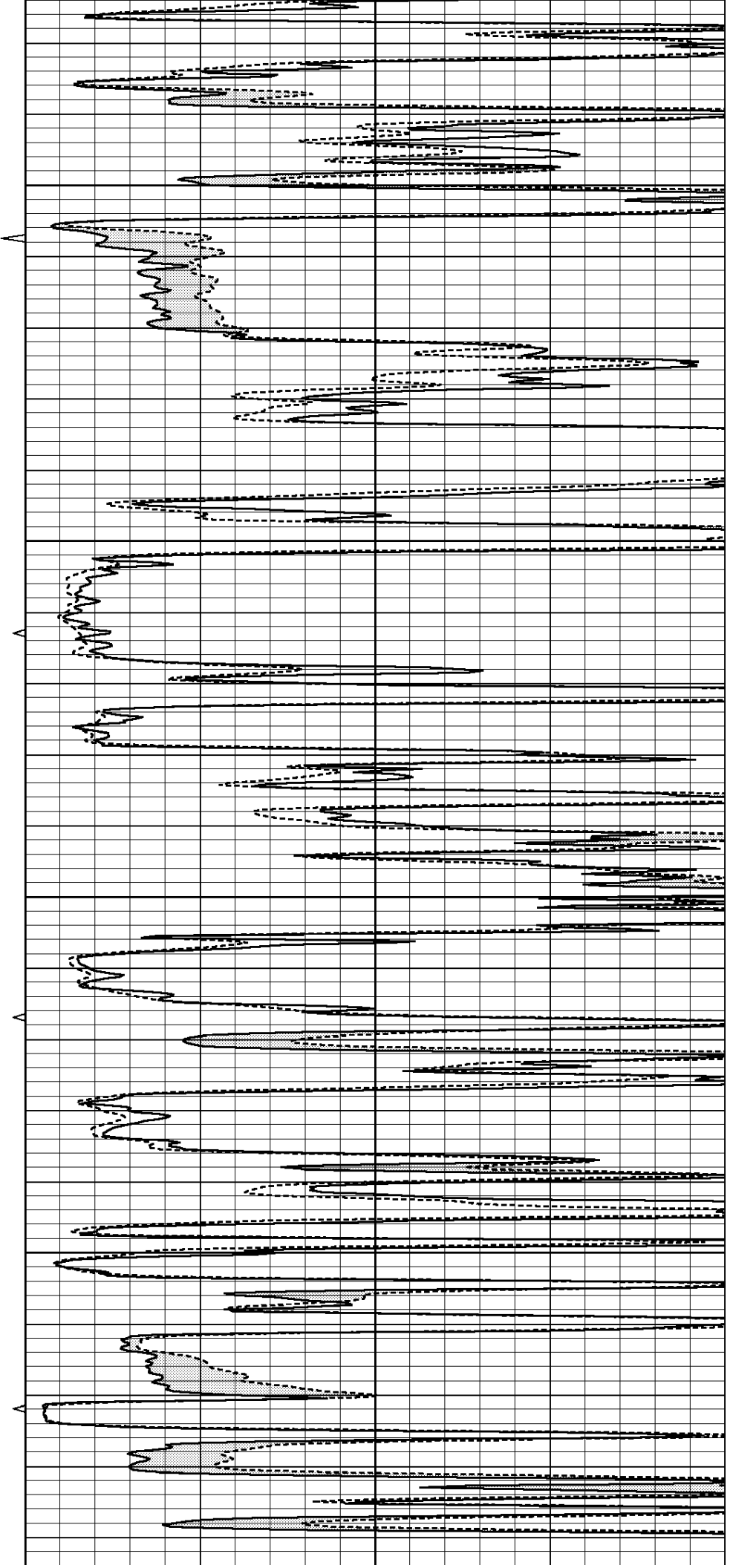


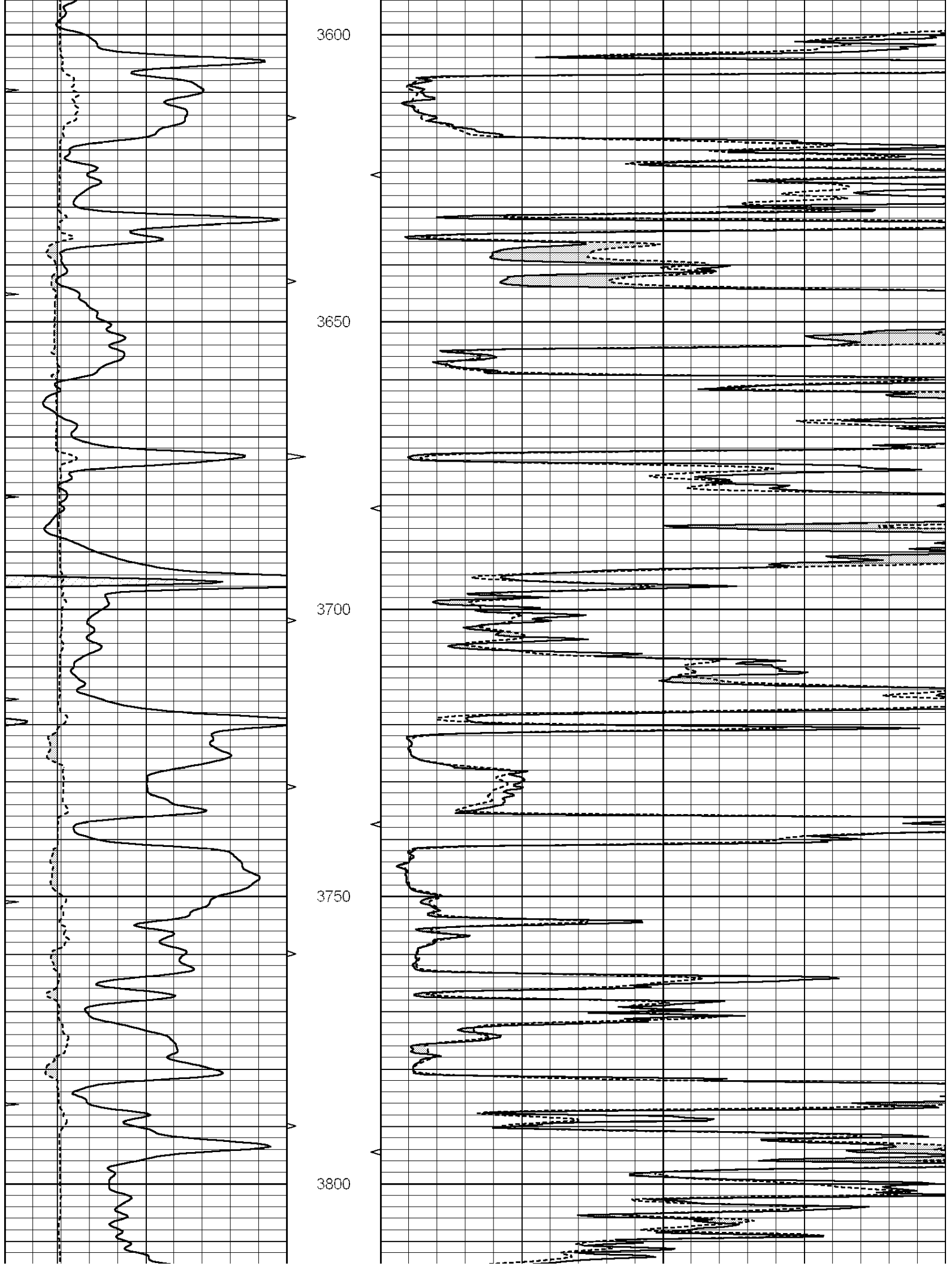
3400

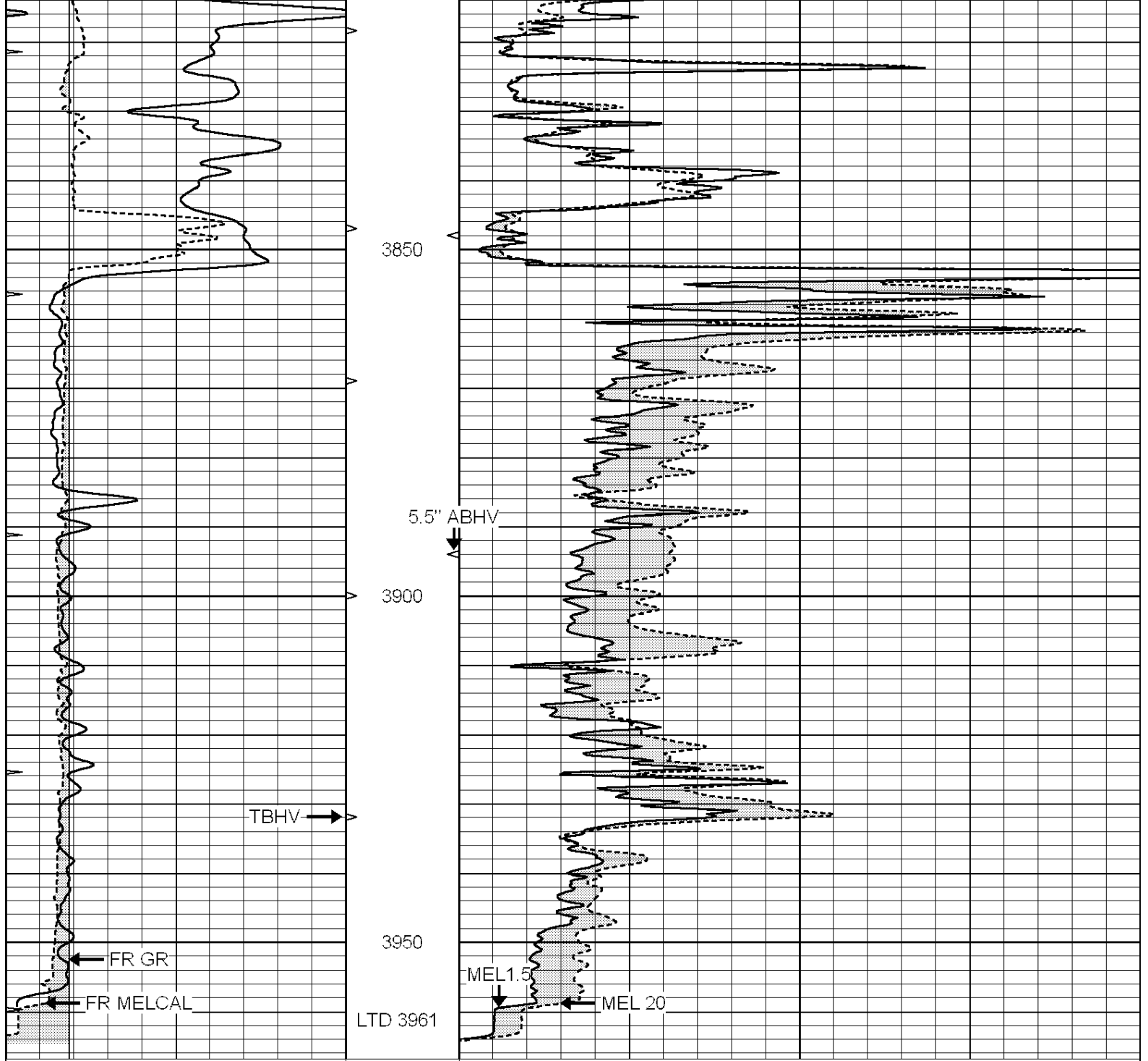
3450

3500

3550







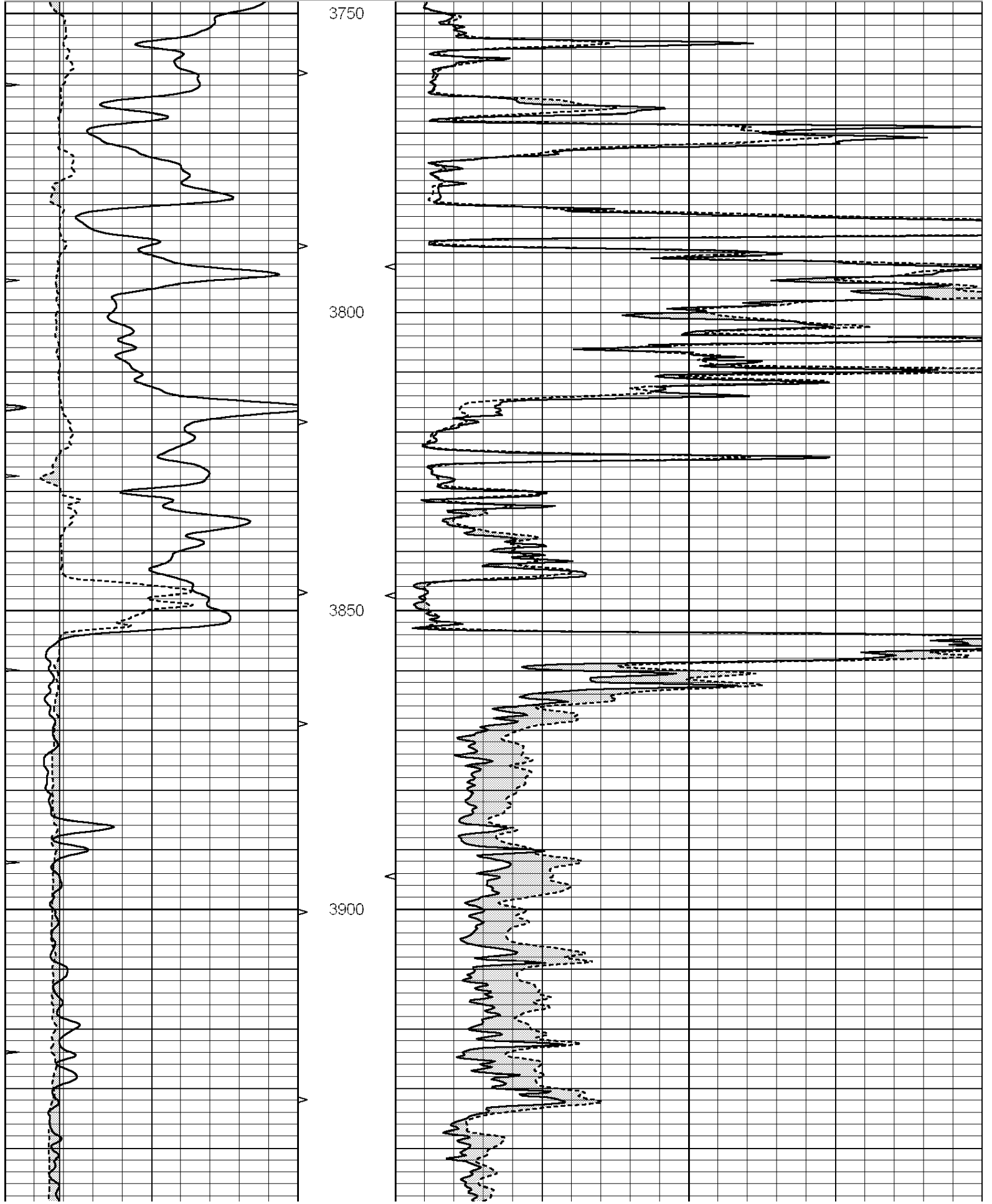
0	GAMMA RAY (GAPI)	150	ABHV	0	MEL1.5 (Ohm-m)	40
6	CALIPER (in)	16	10 (ft3)	0	MEL 20 (Ohm-m)	40
0	MINMK	20	TBHV			
			0 (ft3)	10		

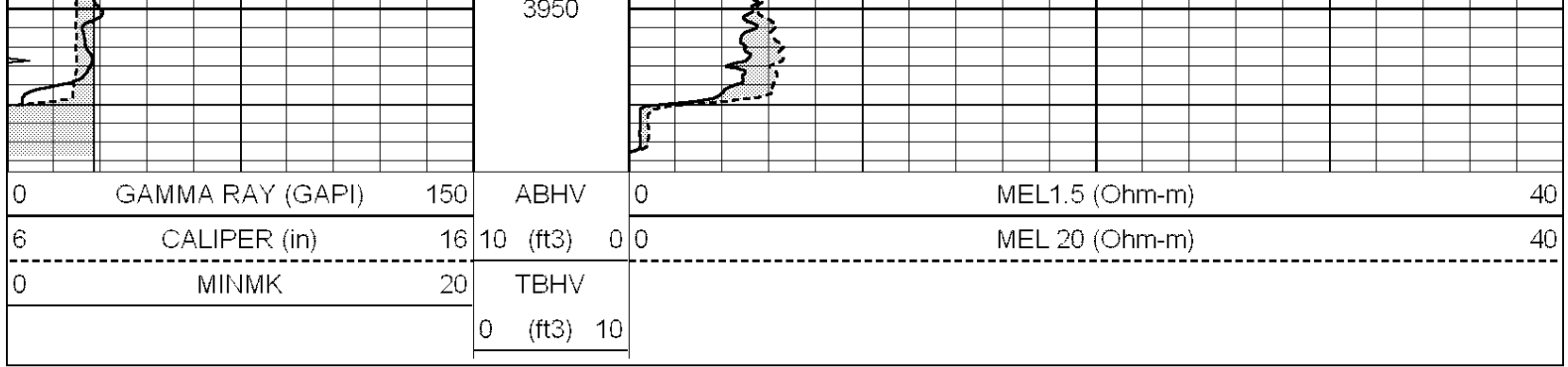
NABORS
COMPLETION & PRODUCTION SERVICES CO.

REPEAT SECTION

Database File: 24551ddn.db
 Dataset Pathname: pass8.2
 Presentation Format: micro
 Dataset Creation: Tue Jul 08 12:32:39 2014 by Calc SOC 120430
 Charted by: Depth in Feet scaled 1:240

0	GAMMA RAY (GAPI)	150	ABHV	0	MEL1.5 (Ohm-m)	40
6	CALIPER (in)	16	10 (ft3)	0 0	MEL 20 (Ohm-m)	40
0	MINMK	20	TBHV			
			0 (ft3)	10		





Calibration Report

Database File: 24551ddn.db
 Dataset Pathname: pass9.4
 Dataset Creation: Tue Jul 08 12:56:03 2014 by Calc SOC 120430

MICRO Calibration Report

Serial Number:	070910	
Tool Model:	ProbeN	
Performed:	Mon Apr 28 07:45:19 2014	
Caliper Calibration:	Gain=4.325	Offset=0.888
	Low Cal	High Cal
References	7.600	15.000
Readings	1.552	3.263
1.5" Calibration:	Gain=30.000	Offset=-0.500
	Low Cal	High Cal
References	0.000	20.000
Readings	0.000	1.216
2" Calibration:	Gain=44.000	Offset=-0.800
	Low Cal	High Cal
References	0.000	20.000
Readings	0.002	1.053

Gamma Ray Calibration Report

Serial Number:	070559	
Tool Model:	OPEN_GR	
Performed:	Tue Jun 10 17:15:42 2014	
Calibrator Value:	1.0	GAPI
Background Reading:	0.0	cps
Calibrator Reading:	1.0	cps
Sensitivity:	0.2200	GAPI/cps