



Pioneer Energy Services

Microresistivity Log

15-051-26670-00-00

API No.

Company **Brungardt Oil and Leasing, Inc.**

Well **Brungardt #7**

Field **Emmeram Northeast**

County **Elilis** State **Kansas**

Location **1025' FNL & 1205' FWL**

Other Services
CNL/CDL
DIL

Sec: **26** Twp: **12S** Rge: **16W**

Permanent Datum **Ground Level** Elevation **1961**
Log Measured From **Kelly Bushing** 5 Ft. Above Perm. Datum
Drilling Measured From **Kelly Bushing**

Elevation
K.B. 1966
D.F. 1961
G.L. 1961

Date	3/4/2014
Run Number	Two
Depth Driller	3520
Depth Logger	3405
Bottom Logged Interval	3405
Top Log Interval	2800
Casing Driller	8.625 @ 217
Casing Logger	218
Bit Size	7.875
Type Fluid in Hole	Chemical
Salinity, ppm CL	6500
Density / Viscosity	9.0 51
pH / Fluid Loss	11.0 7.2
Source of Sample	Flowline
Rm @ Meas. Temp	0.61 @ 49
Rmf @ Meas. Temp	0.48 @ 49
Rmc @ Meas. Temp	0.82 @ 49
Source of Rmf / Rmc	Charts
Rm @ BHT	0.26 @ 113
Operating Rig Time	4 Hours
Max Rec. Temp. F	113
Equipment Number	91
Location	Hays
Recorded By	D. Schmidt
Witnessed By	Brad Hutchison

<<< Fold Here >>>

All interpretations are opinions based on inferences from electrical or other measurements and we cannot and do not guarantee the accuracy or correctness of any interpretation, and we shall not, except in the case of gross or willful negligence on our part, be liable or responsible for any loss, costs, damages, or expenses incurred or sustained by anyone resulting from any interpretation made by any of our officers, agents or employees. These interpretations are also subject to our general terms and conditions set out in our current Price Schedule.

Comments

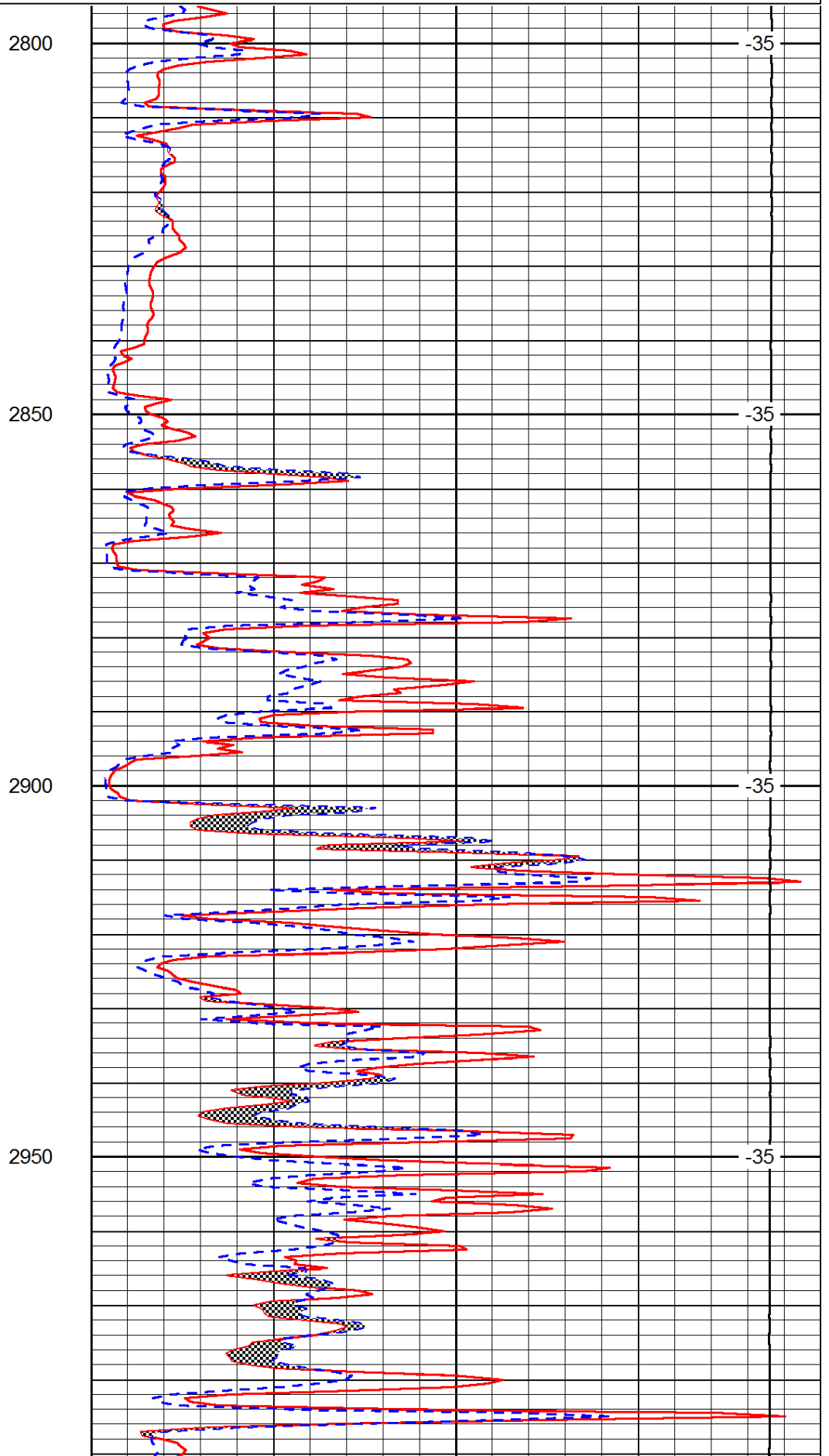
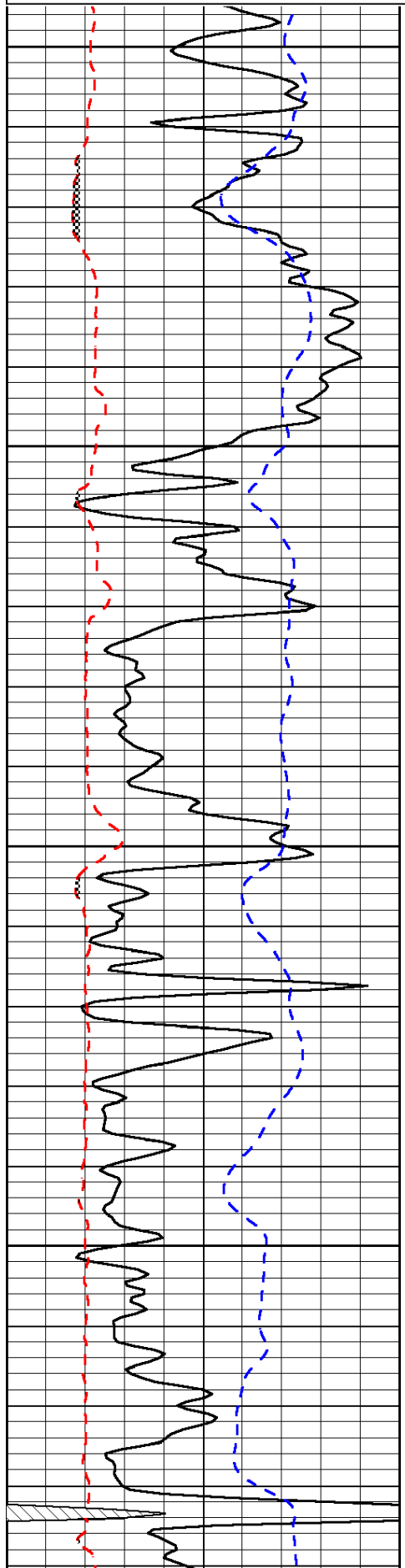
Thank you for using Pioneer Energy Services
www.pioneerenergy.com
 785 625 3858
 Gorham,
 1 East, 7 North to Decker Rd, 3 1/2 West,
 South into

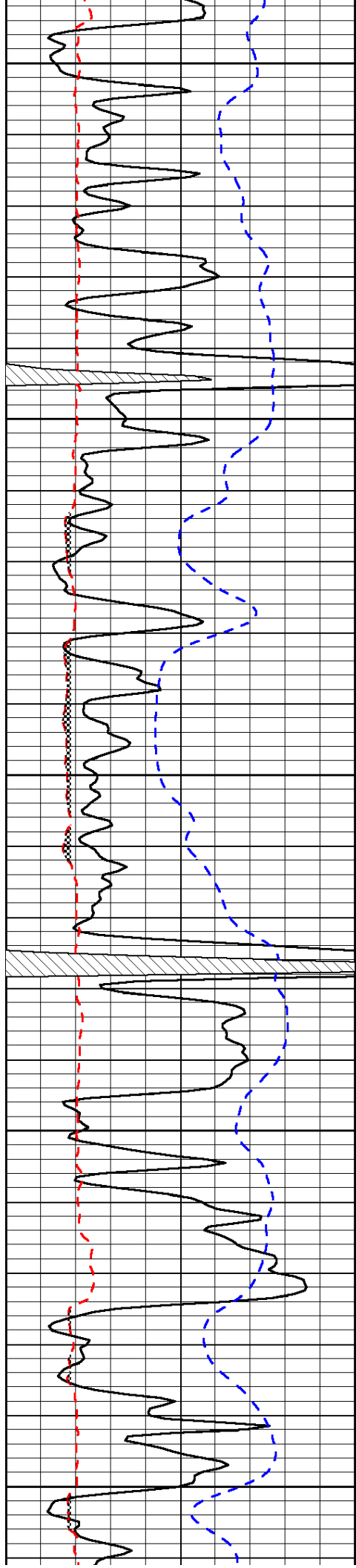
Database File: c:\warrior\data\brungardt_brungardt #7\brungardt_030414hd.db
 Dataset Pathname: dil/brustck
 Presentation Format: micro
 Dataset Creation: Tue Mar 04 14:09:12 2014
 Charted by: Depth in Feet scaled 1:240

0	Gamma Ray	150
6	Micro Log Caliper (GAPI)	16
-200	SP (mV)	0

0	Micro Inverse 1 X 1	40
0	Micro Normal 2"	40
15000	Line Weight	0

LSPD





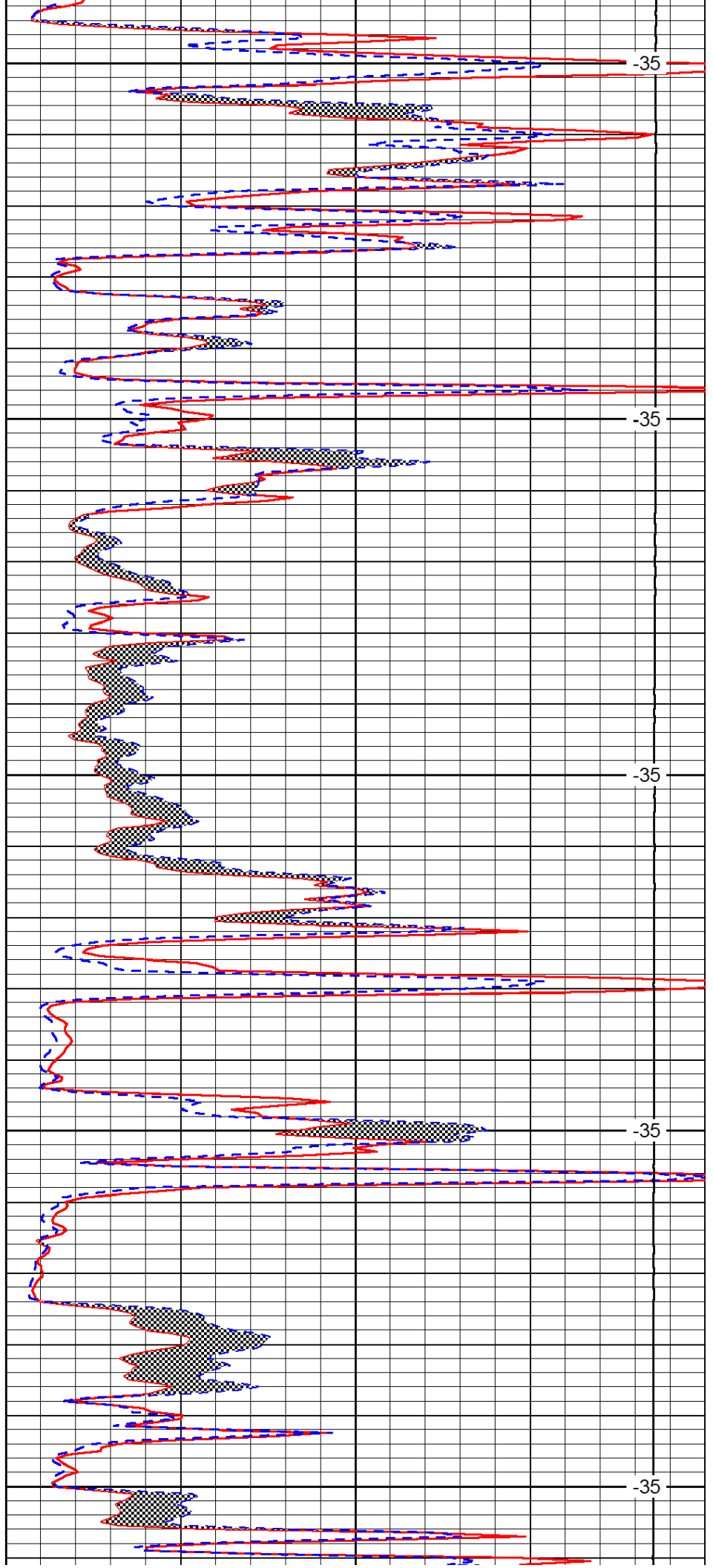
3000

3050

3100

3150

3200



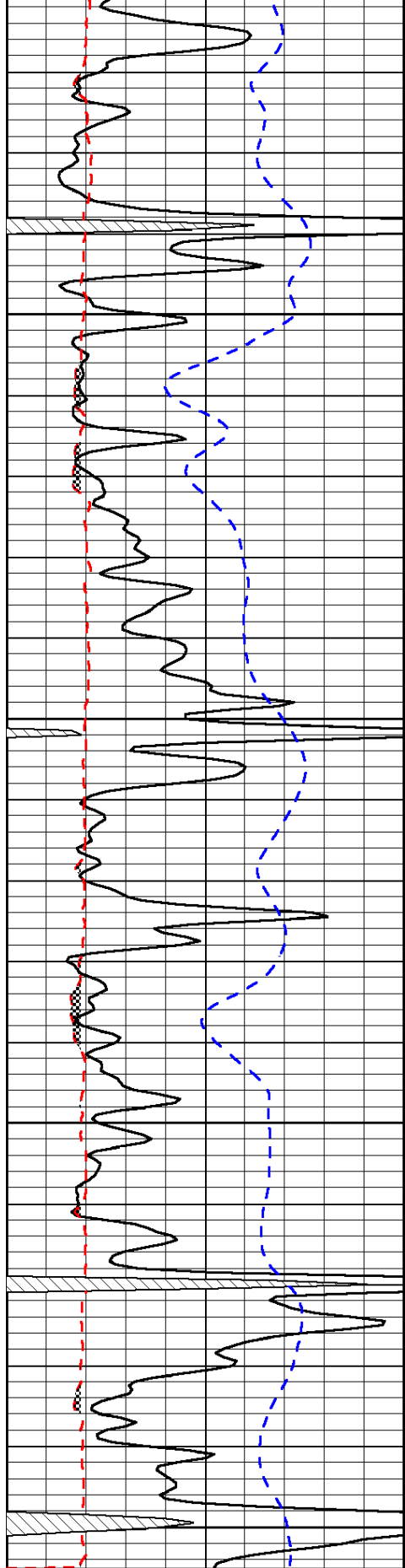
-35

-35

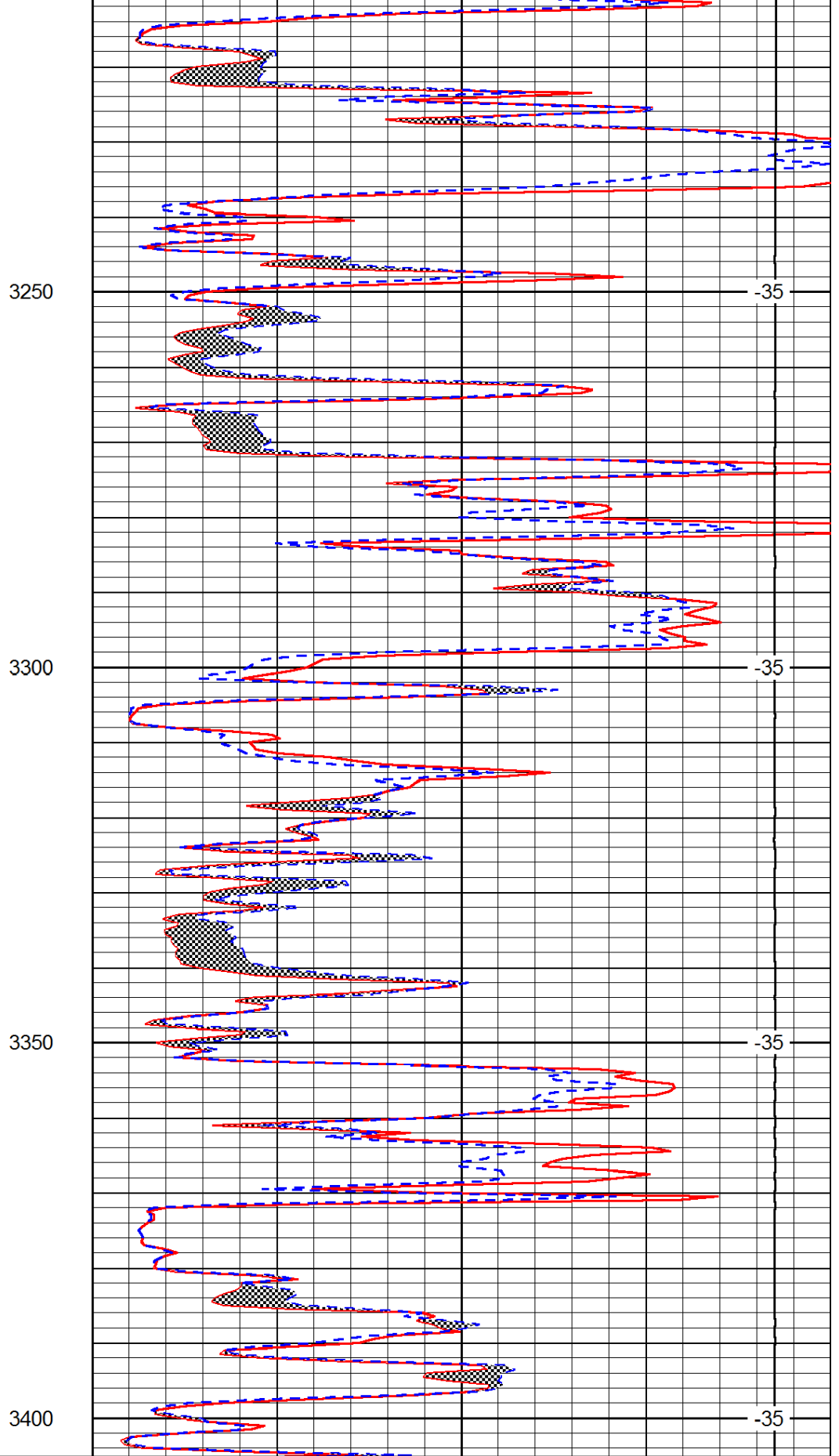
-35

-35

-35



0	Gamma Ray	150
6	Micro Log Caliper (GAPI)	16
-200	SP (mV)	0



0	Micro Inverse 1 X 1	40
0	Micro Normal 2"	40
15000	Line Weight	0

LSPD