



Pioneer Energy Services

# Dual Induction Log

15-051-26670-00-00

API No.

Company **Brungardt Oil and Leasing, Inc.**

Well **Brungardt #7**

Field **Emmeram Northeast**

County **Elilis** State **Kansas**

Location **1025' FNL & 1205' FWL**

Sec: **26** Twp: **12S** Rge: **16W**

Other Services  
CNL/CDL  
MEL

Permanant Datum **Ground Level** Elevation **1961**

Log Measured From **Kelly Bushing** **5** Ft. Above Perm. Datum

Elevation  
K.B. 1966  
D.F. 1961  
G.L. 1961

Date	3/4/2014	
Run Number	One	
Depth Driller	3520	
Depth Logger	3521	
Bottom Logged Interval	3520	
Top Log Interval	200	
Casing Driller	8.625 @ 217	
Casing Logger	218	
Bit Size	7.875	
Type Fluid in Hole	Chemical	
Salinity,ppm CL	6500	
Density / Viscosity	9.0 51	
pH / Fluid Loss	11.0 7.2	
Source of Sample	Flowline	
Rm @ Meas. Temp	0.61 @ 49	
Rmf @ Meas. Temp	0.48 @ 49	
Rmc @ Meas. Temp	0.82 @ 49	
Source of Rmf / Rmc	Charts	
Rm @ BHT	0.26 @ 113	
Operating Rig Time	4 Hours	
Max Rec. Temp. F	113	
Equipment Number	91	
Location	Hays	
Recorded By	D. Schmidt	
Witnessed By	Brad Hutchison	

<<< Fold Here >>>

All interpretations are opinions based on inferences from electrical or other measurements and we cannot and do not guarantee the accuracy or correctness of any interpretation, and we shall not, except in the case of gross or willful negligence on our part, be liable or responsible for any loss, costs, damages, or expenses incurred or sustained by anyone resulting from any interpretation made by any of our officers, agents or employees. These interpretations are also subject to our general terms and conditions set out in our current Price Schedule.

### Comments

Thank you for using Pioneer Energy Services  
[www.pioneerenergy.com](http://www.pioneerenergy.com)  
 785 625 3858  
 Gorham,  
 1 East, 7 North to Decker Rd, 3 1/2 West,  
 South into

Database File: c:\warrior\data\brungardt\_brungardt #7\brungardt\_030414hd.db  
 Dataset Pathname: dil/brustck  
 Presentation Format: dil2in  
 Dataset Creation: Tue Mar 04 14:09:12 2014  
 Charted by: Depth in Feet scaled 1:600

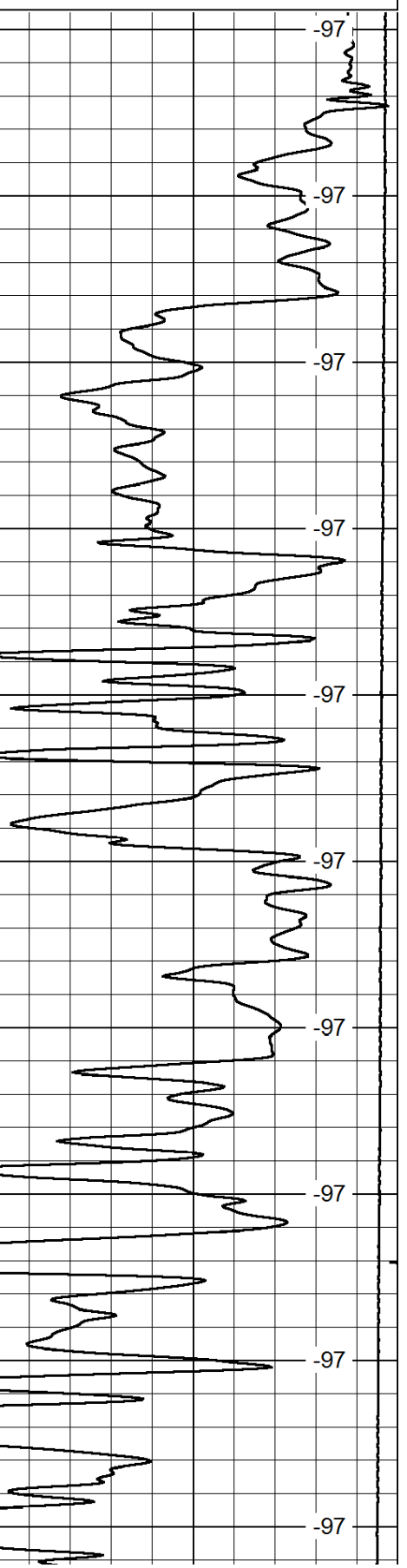
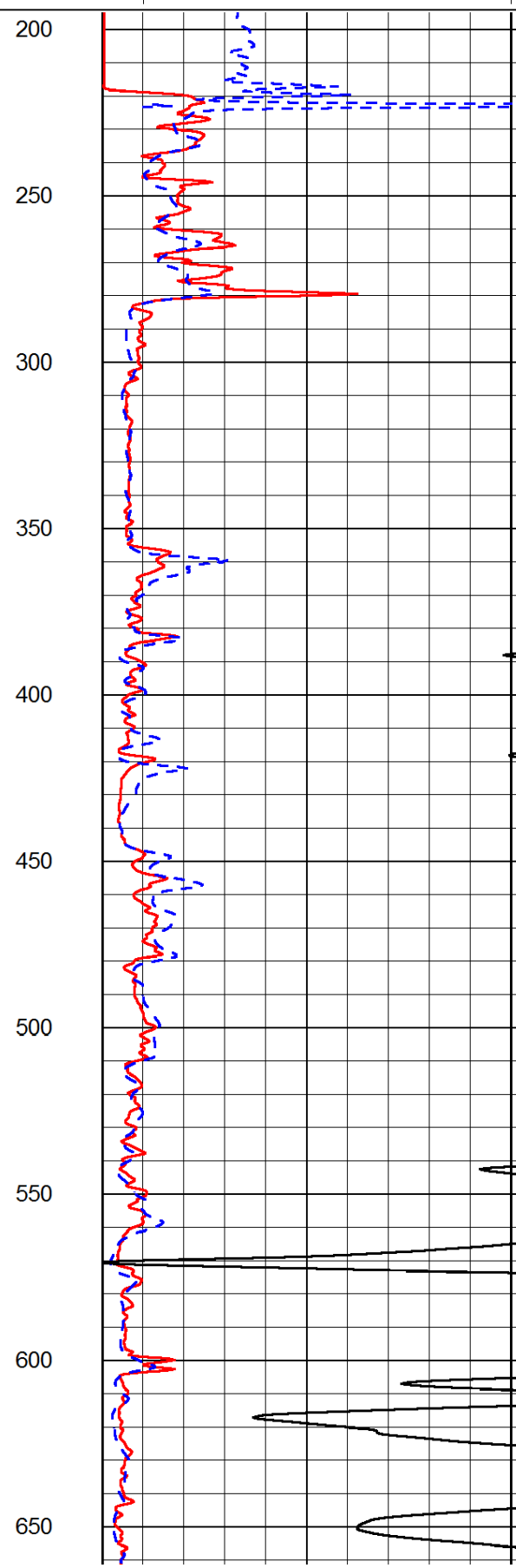
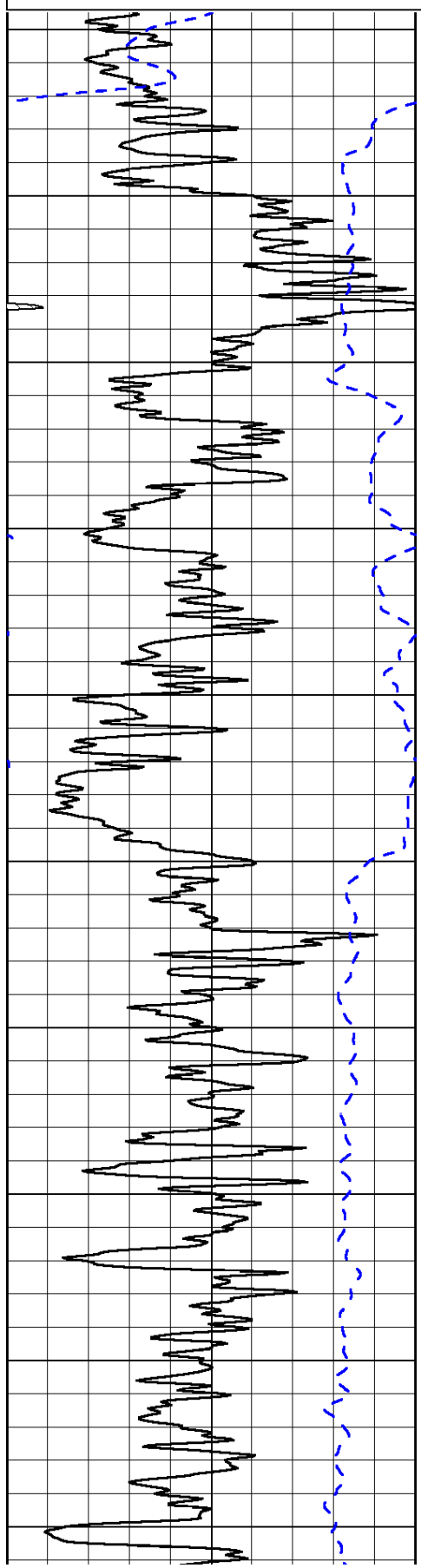
0	Gamma Ray	150
-200	SP (mV)	0

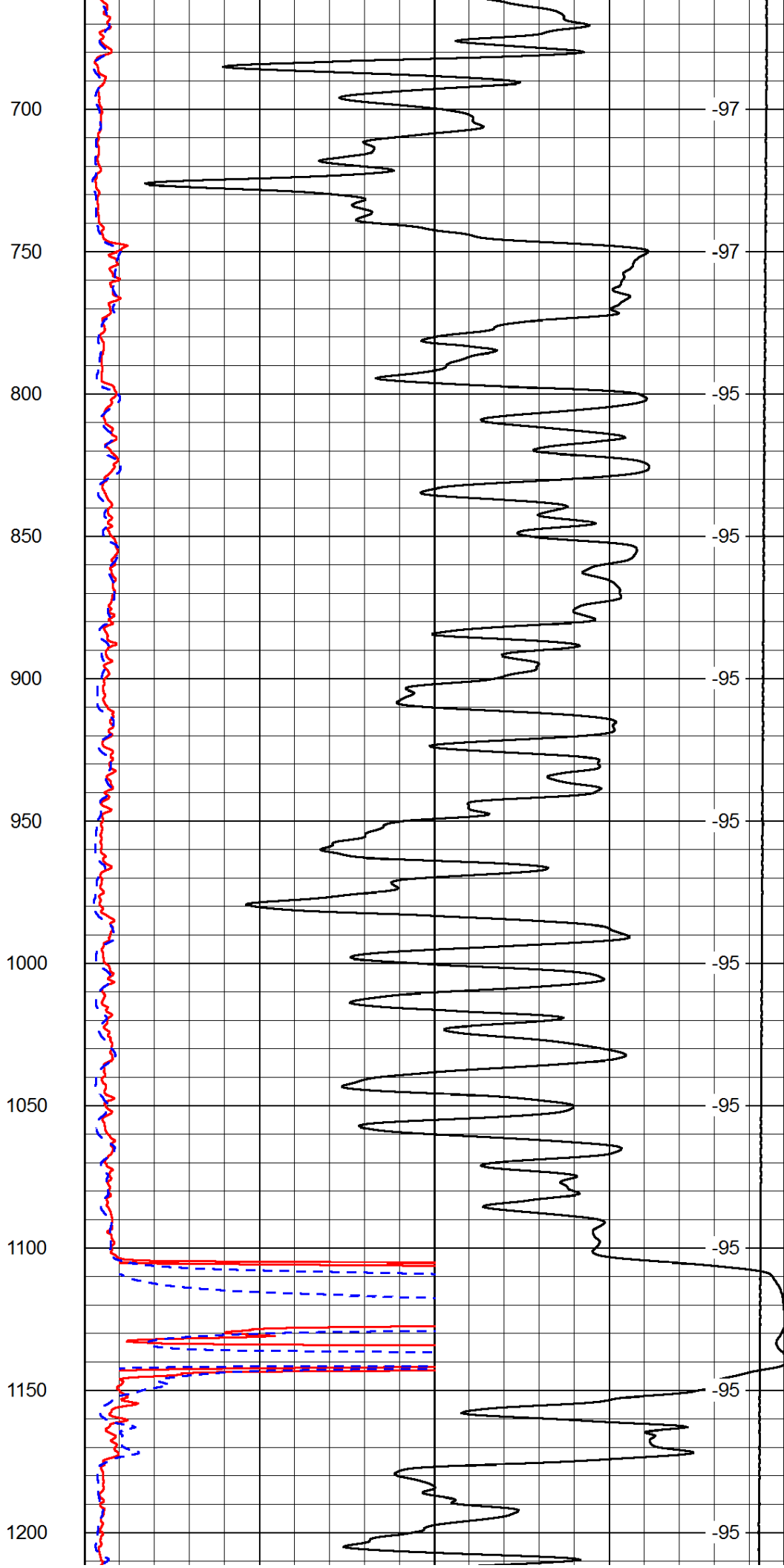
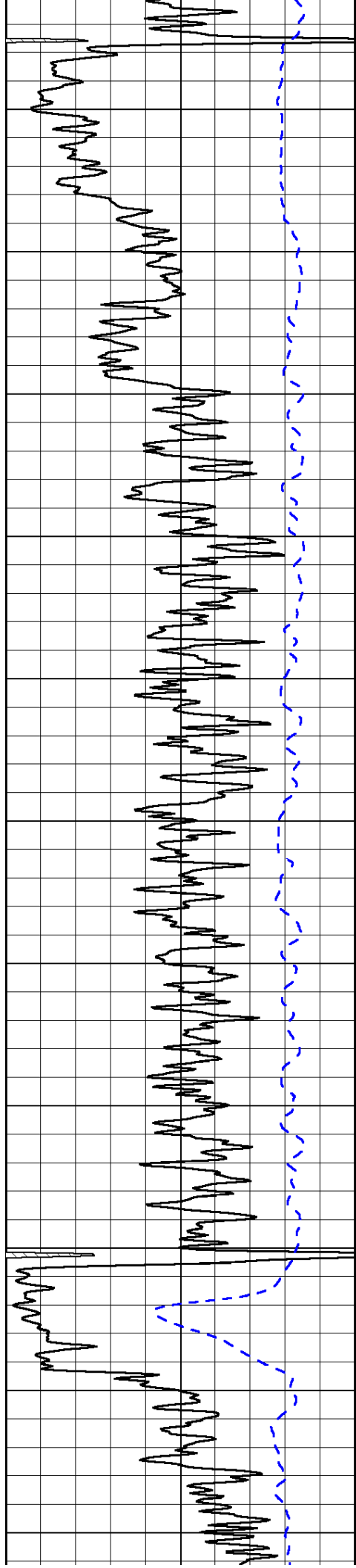
0	Shallow Resistivity	50
0	Deep Resistivity	50

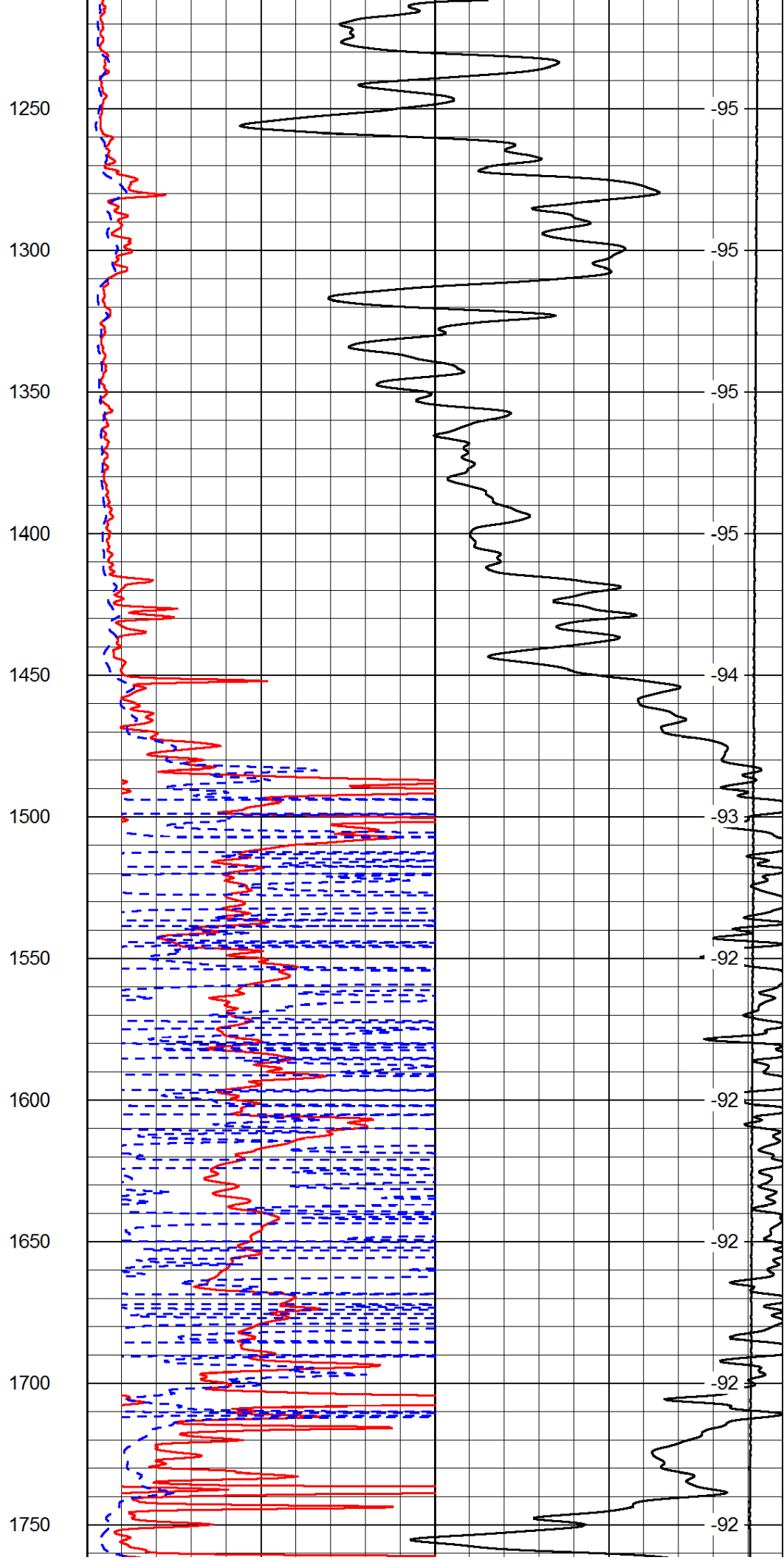
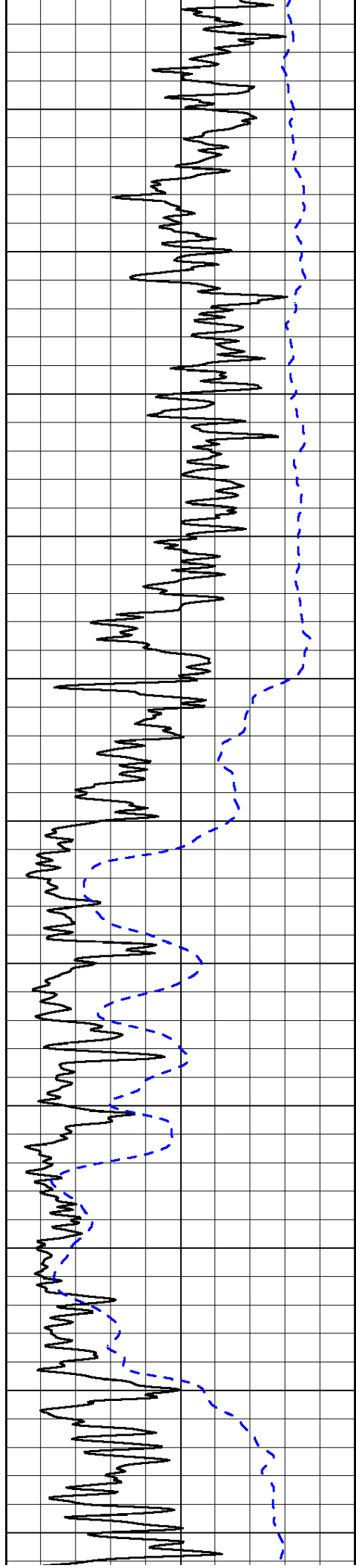
LSPD

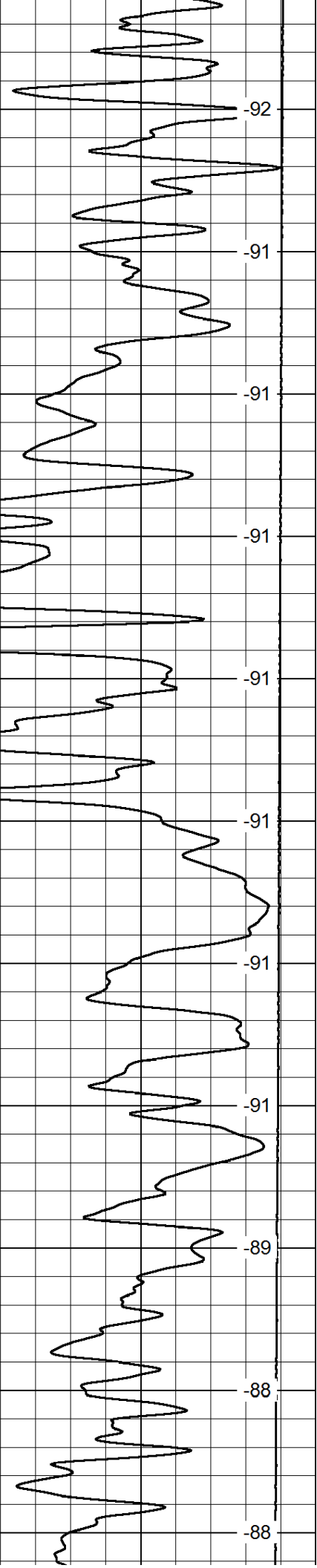
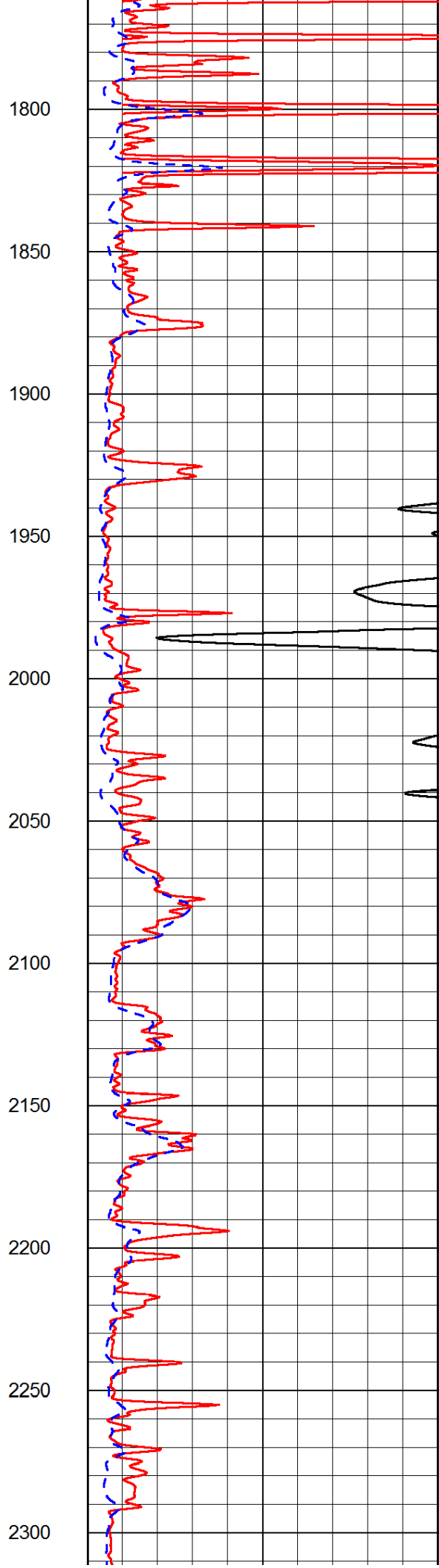
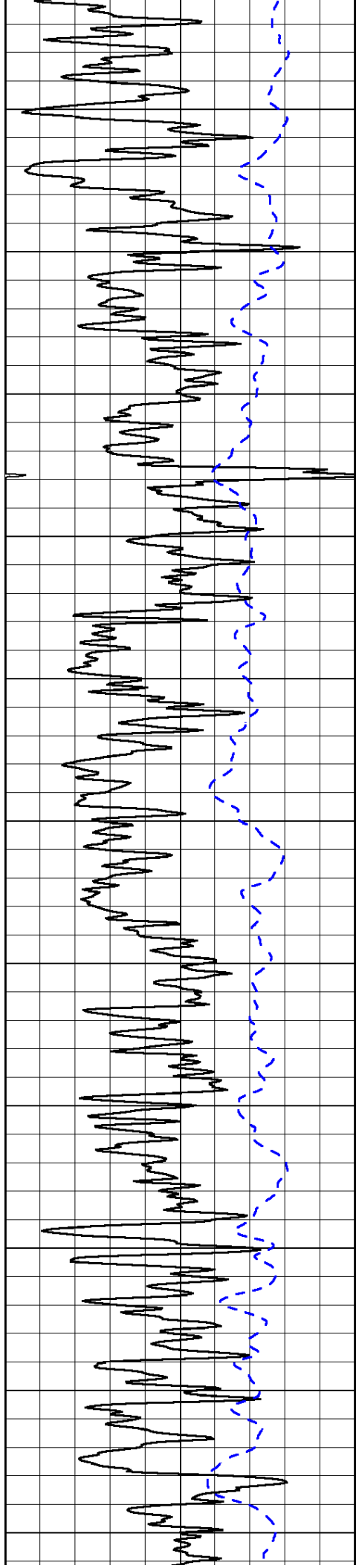
1000	Conductivity	0
15000	Line Tension	0

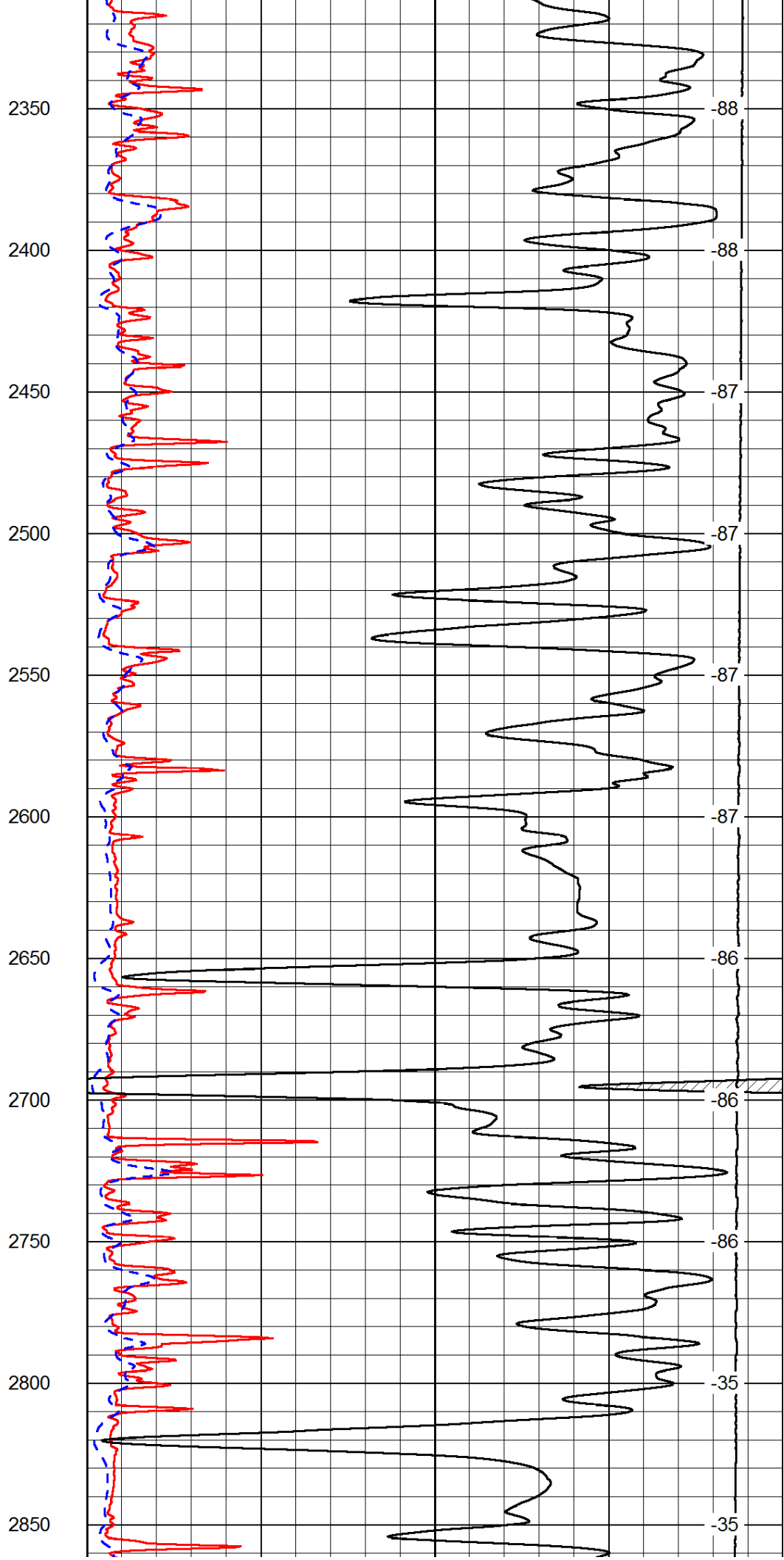
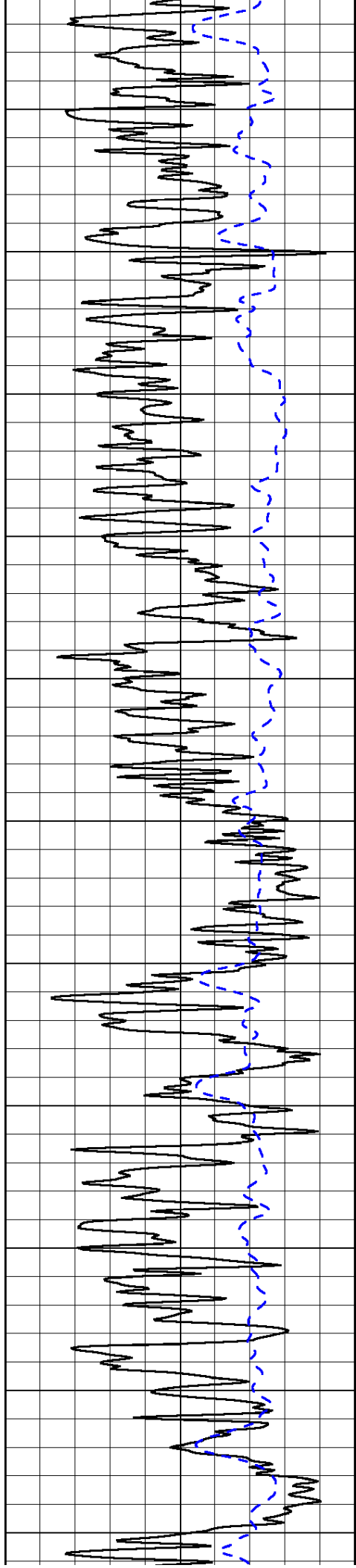
50	Shallow Resistivity	500
50	Deep Resistivity	500

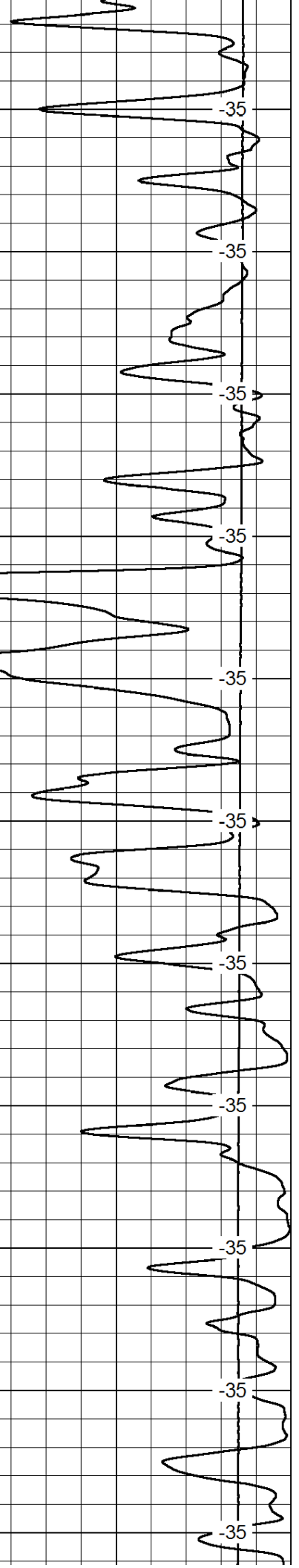
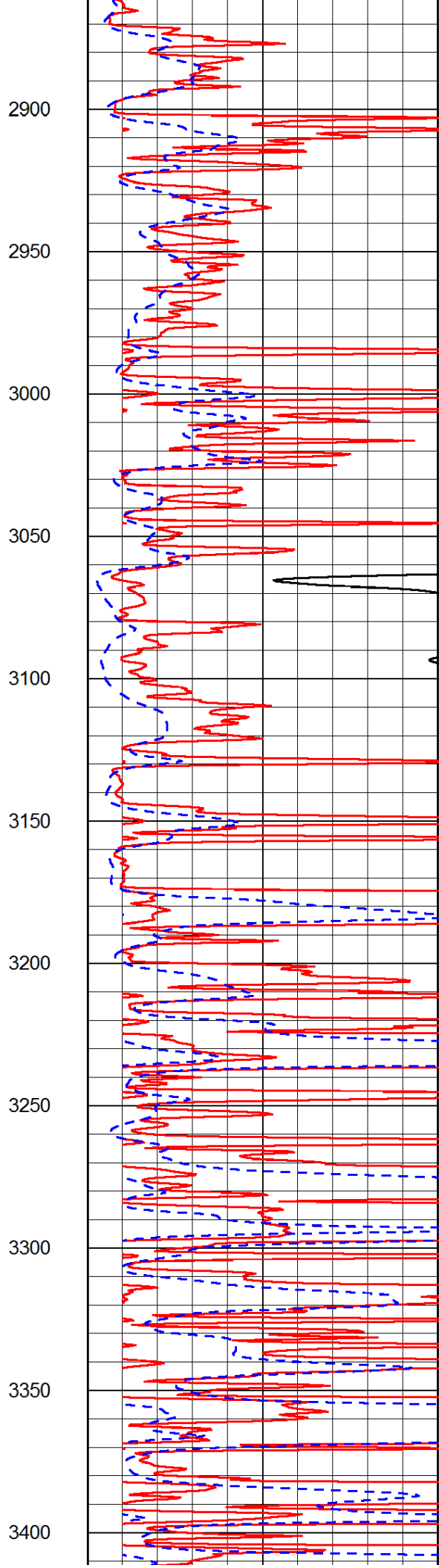
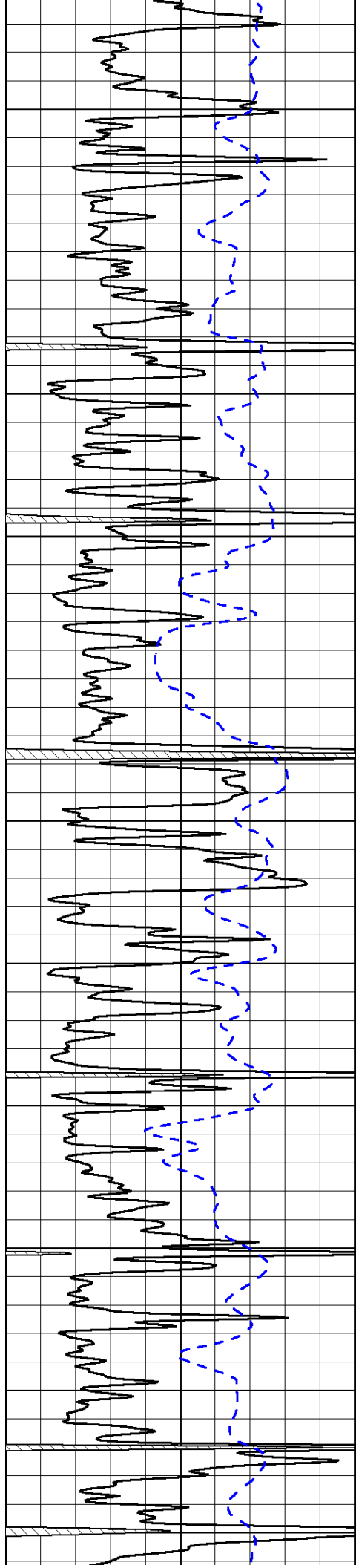


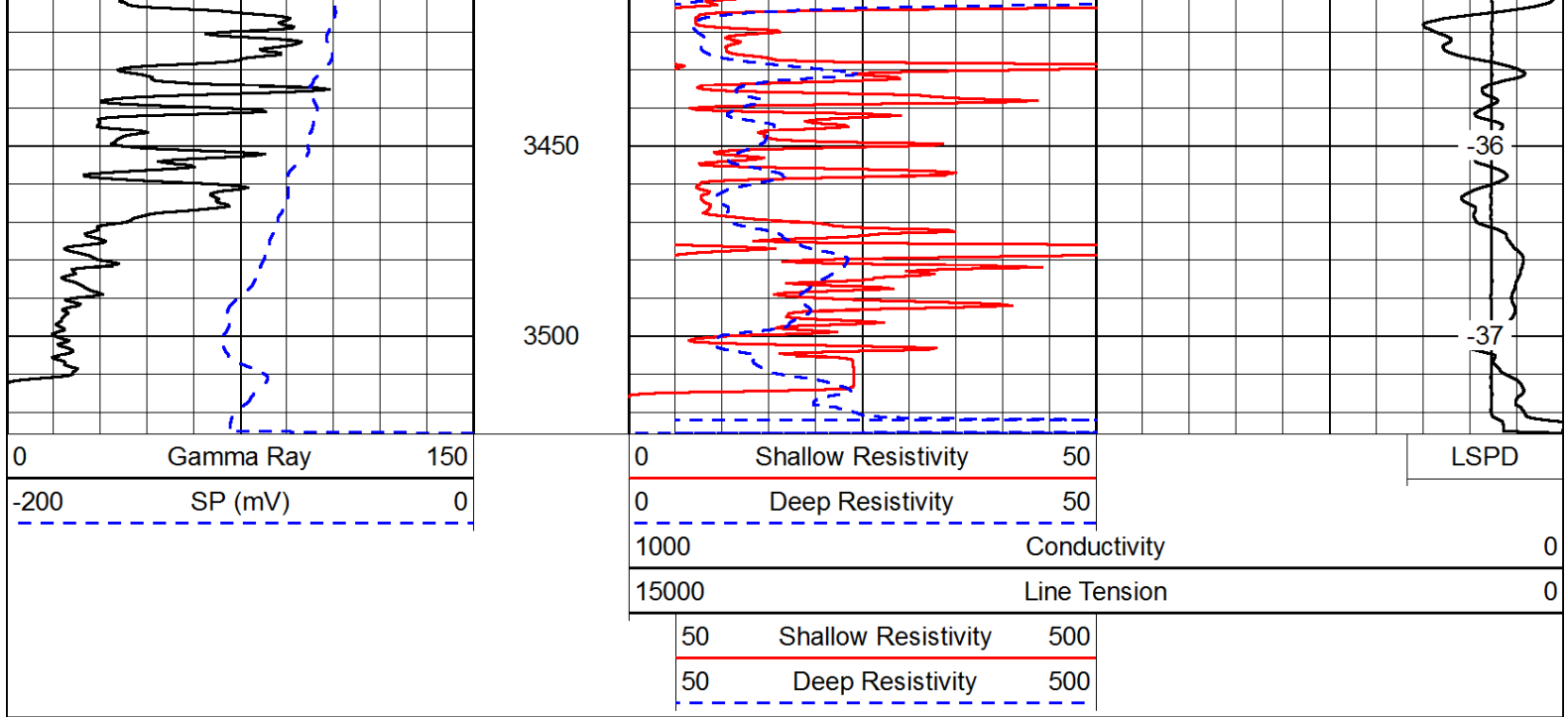




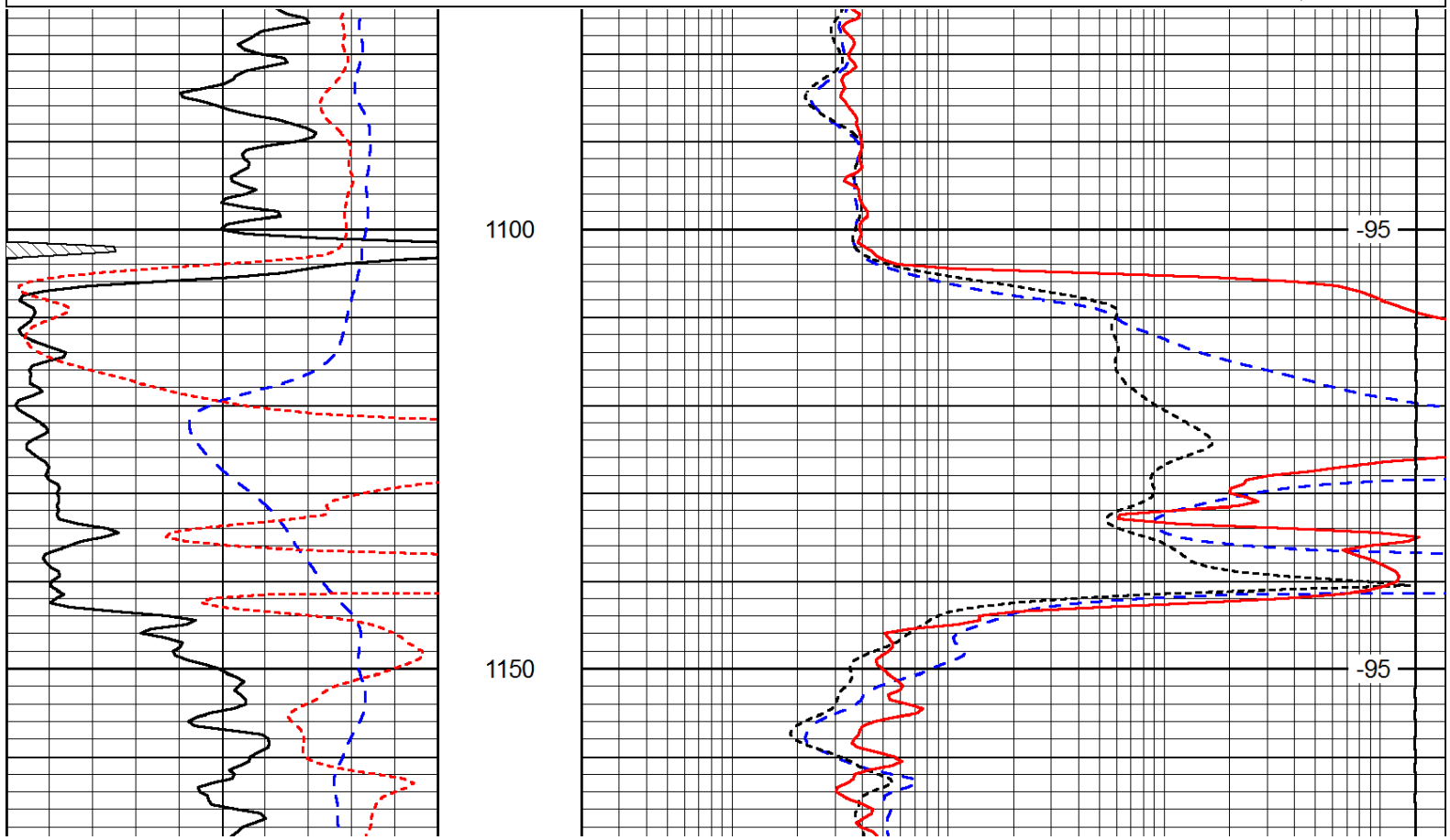
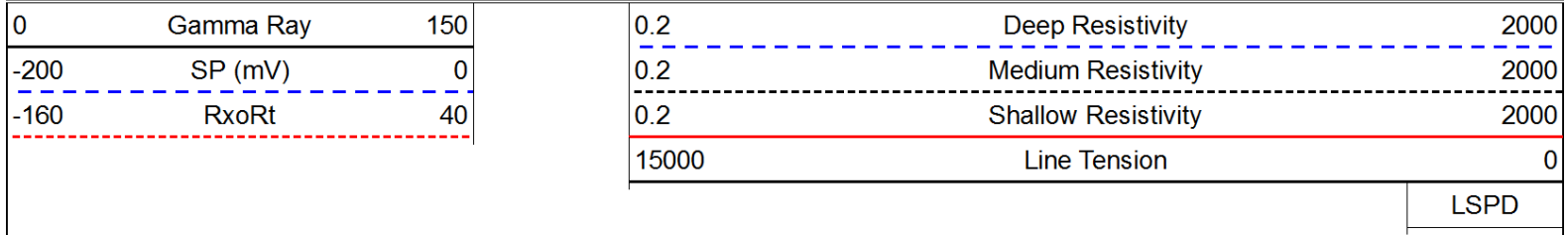


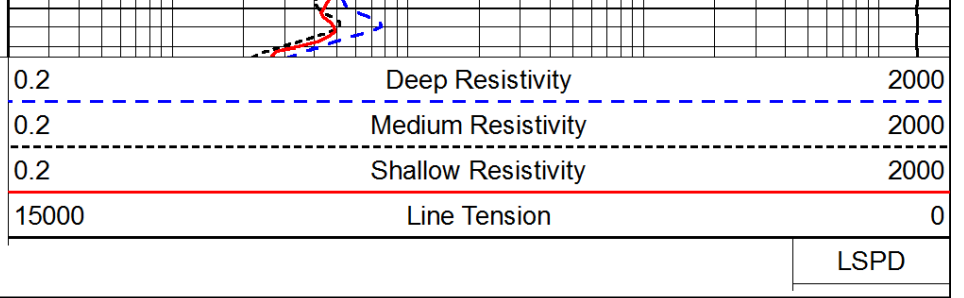
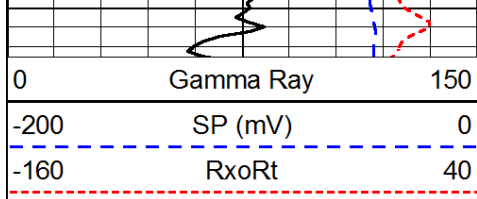




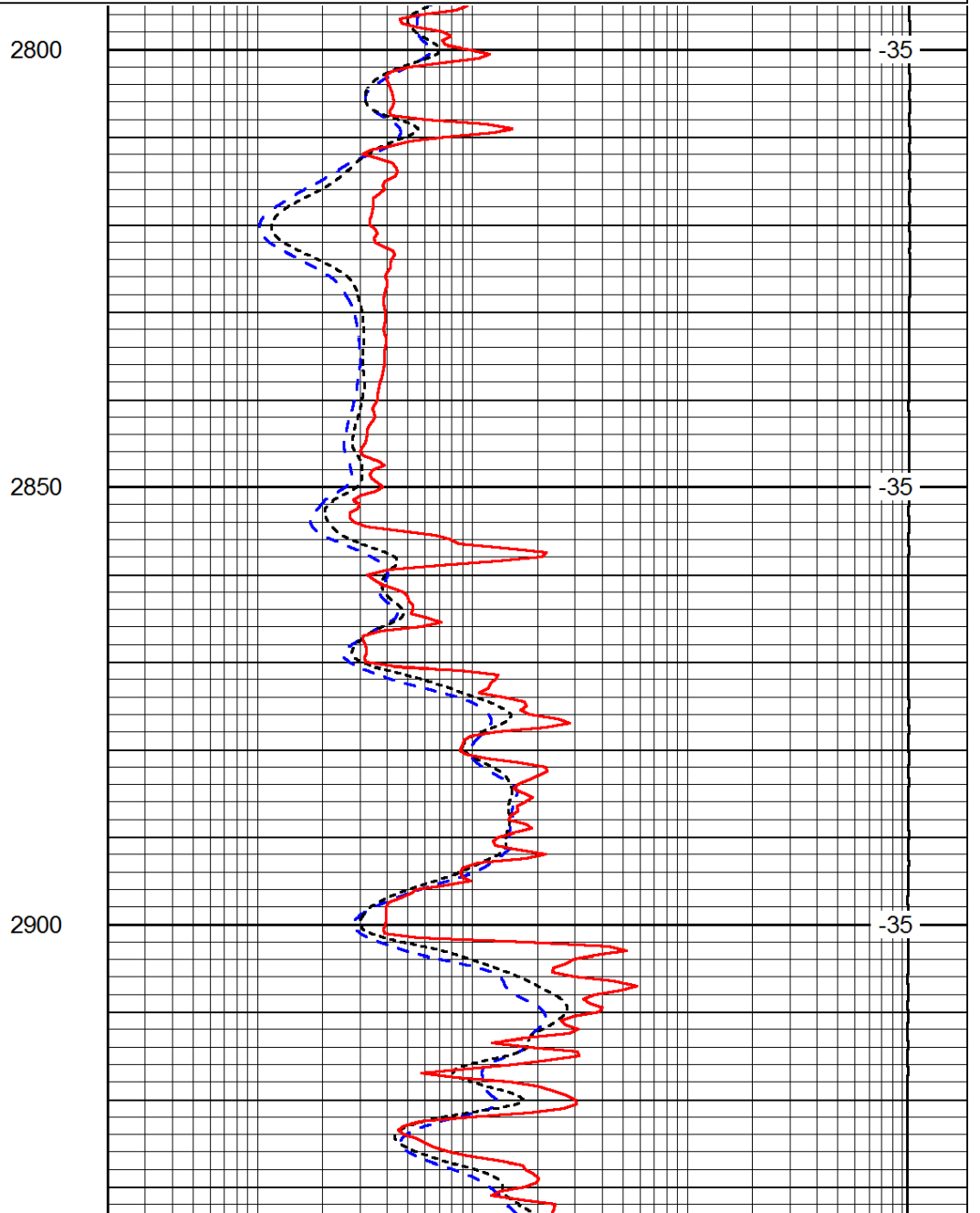
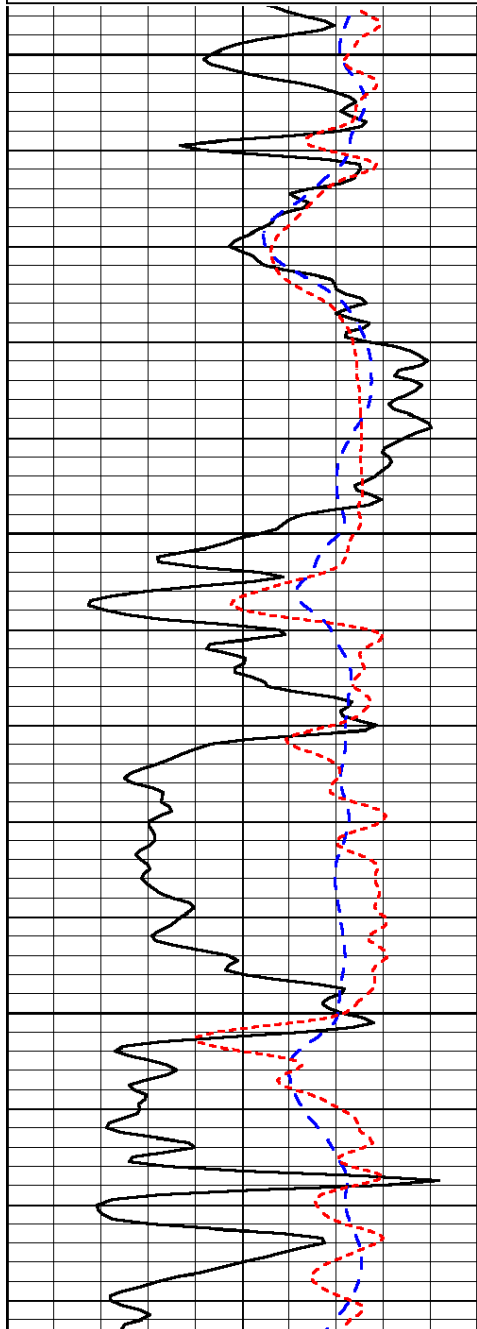
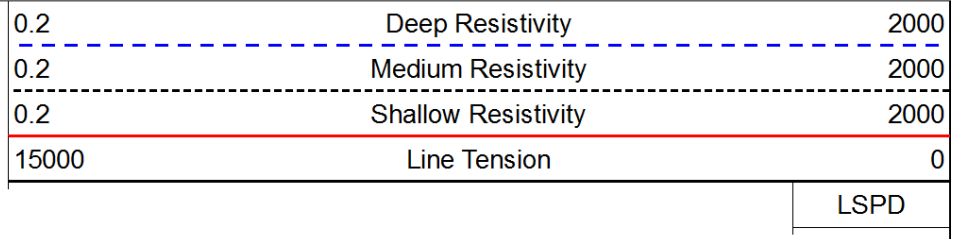
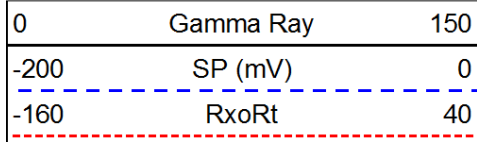


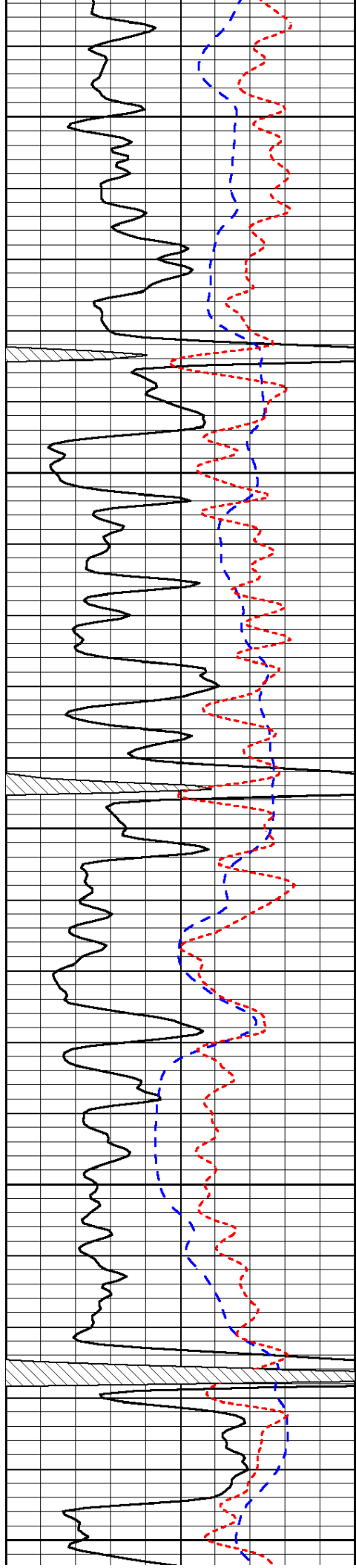
Database File: c:\warrior\data\brungardt\_brungardt #7\brungardt\_030414hd.db  
 Dataset Pathname: dil/brustck  
 Presentation Format: dil  
 Dataset Creation: Tue Mar 04 14:09:12 2014  
 Charted by: Depth in Feet scaled 1:240





Database File: c:\warrior\data\brungardt\_brungardt #7\brungardt\_030414hd.db  
 Dataset Pathname: dil/brustck  
 Presentation Format: dil  
 Dataset Creation: Tue Mar 04 14:09:12 2014  
 Charted by: Depth in Feet scaled 1:240





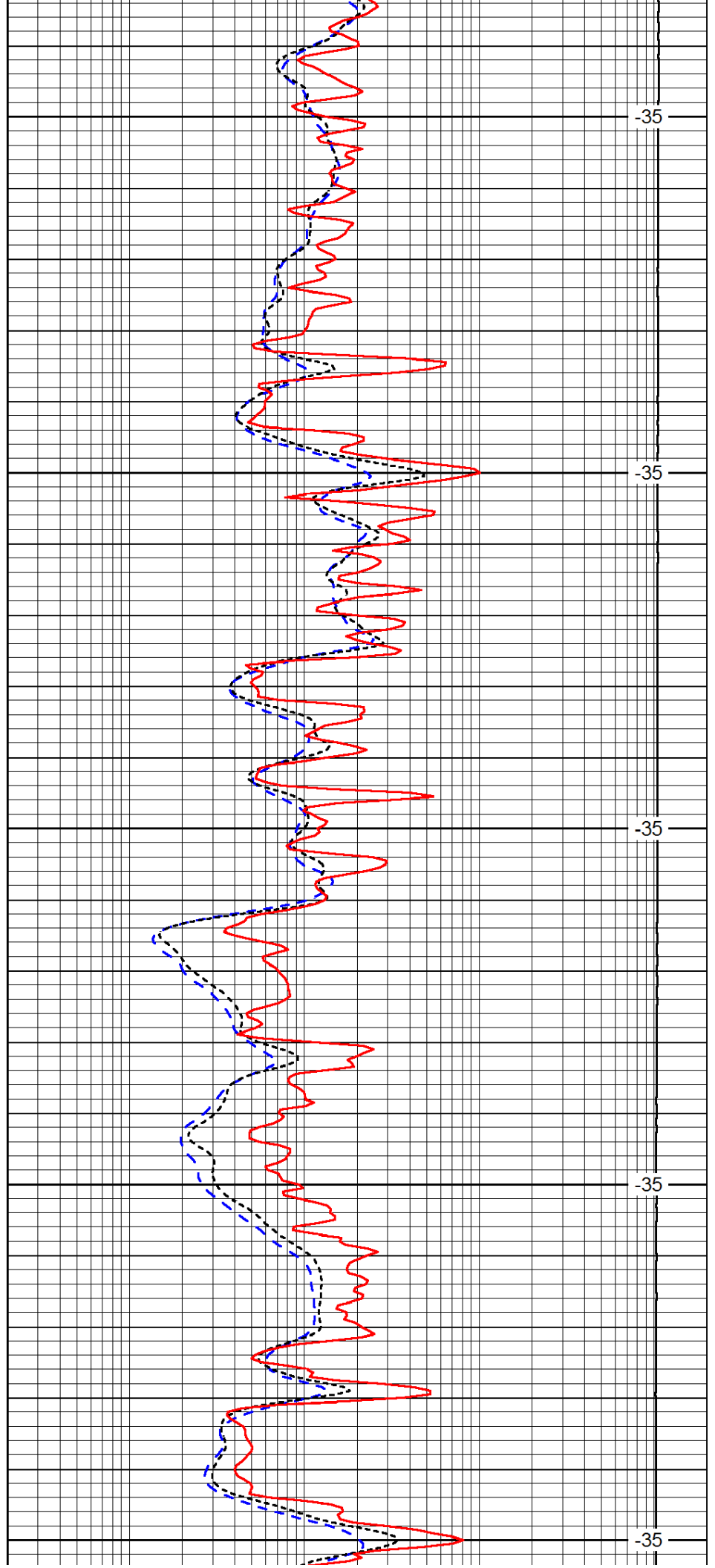
2950

3000

3050

3100

3150



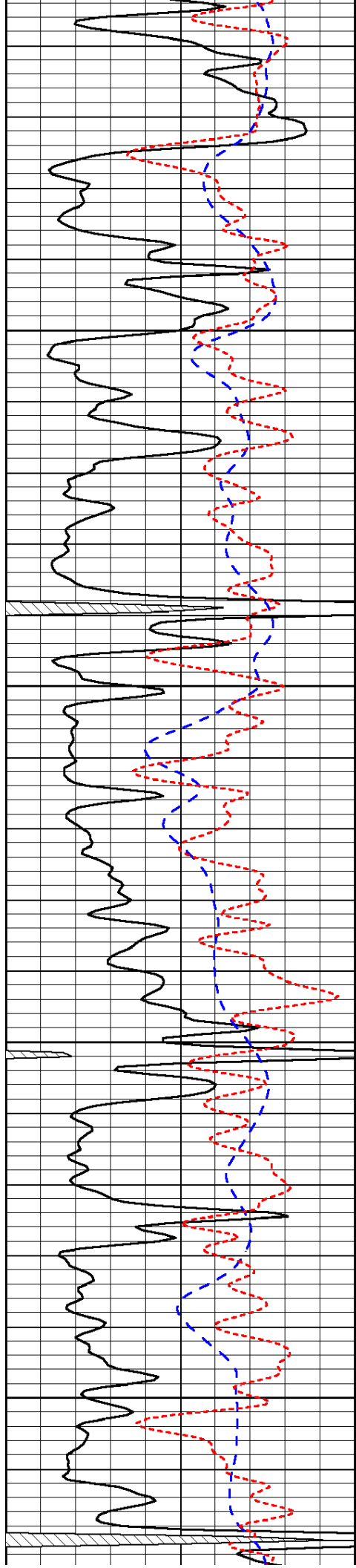
-35

-35

-35

-35

-35

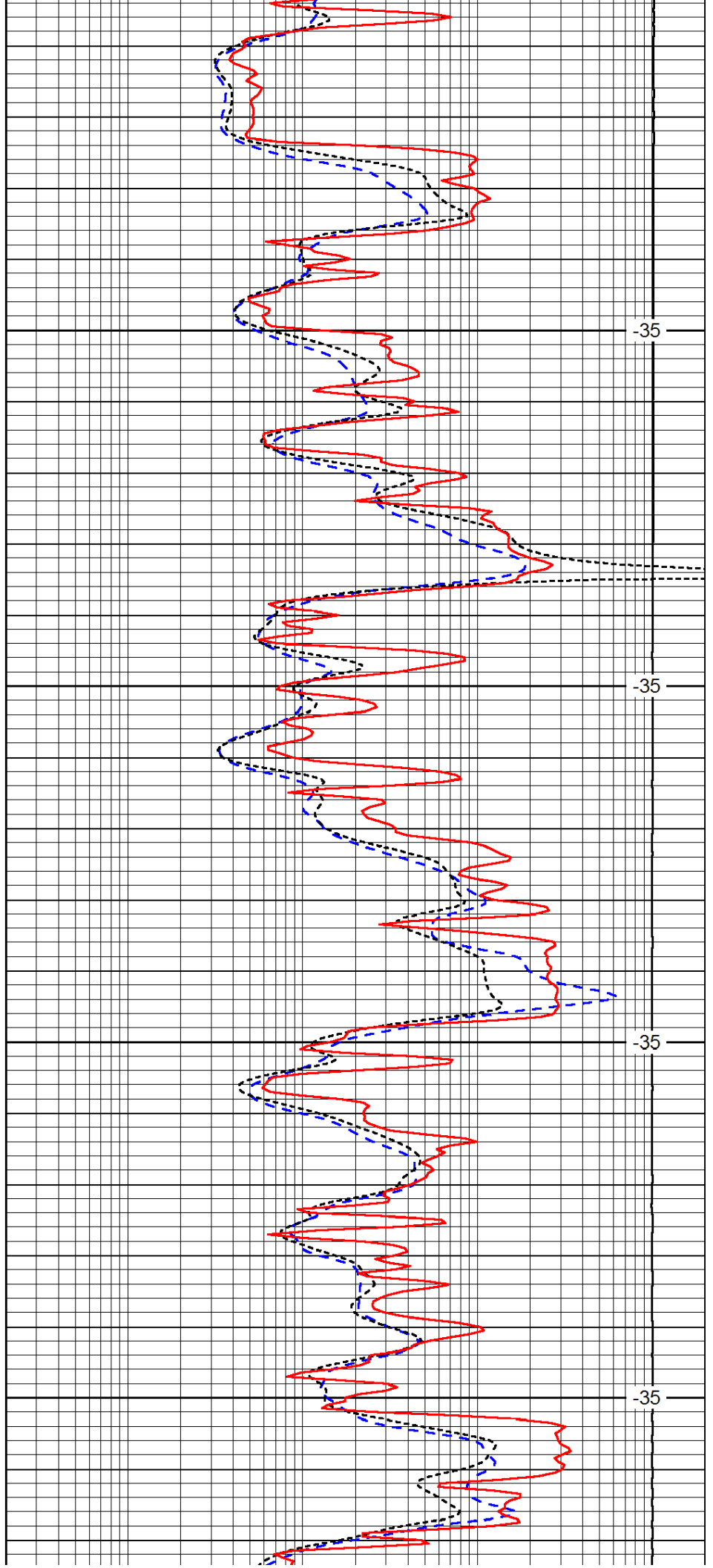


3200

3250

3300

3350

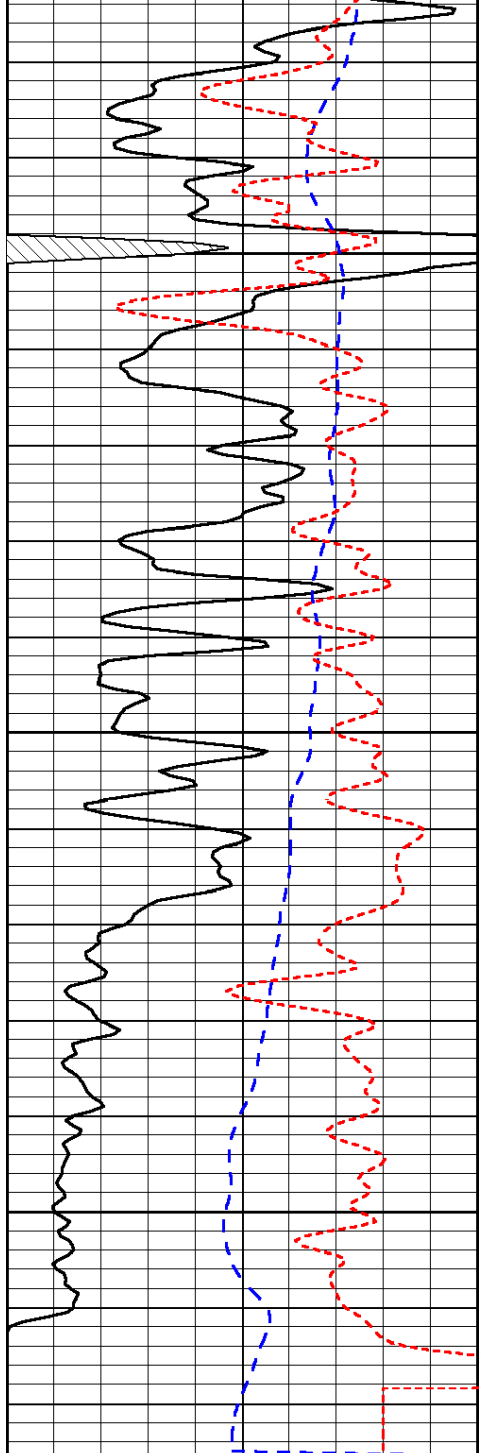


-35

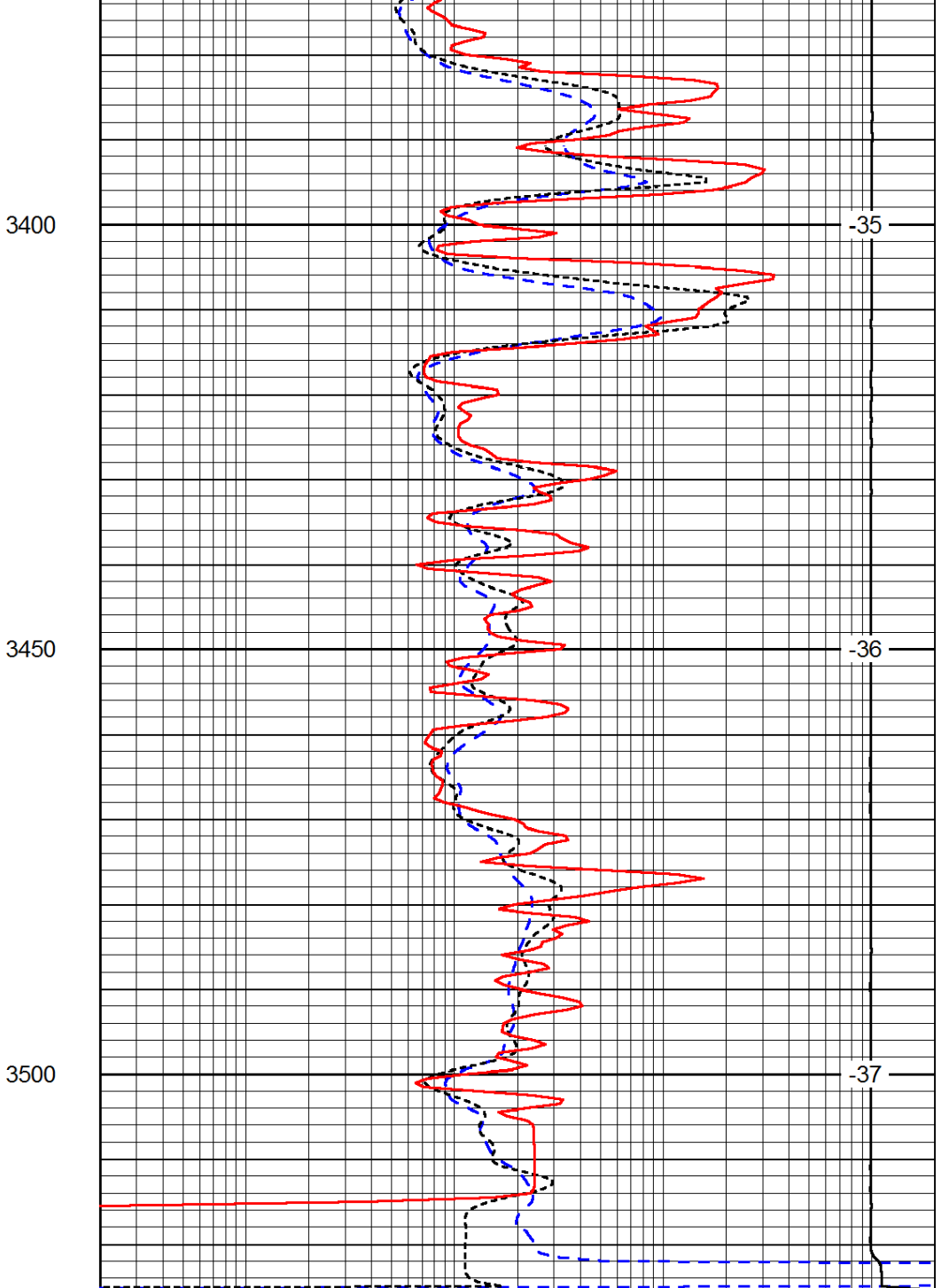
-35

-35

-35



0	Gamma Ray	150
-200	SP (mV)	0
-160	RxoRt	40



0.2	Deep Resistivity	2000
0.2	Medium Resistivity	2000
0.2	Shallow Resistivity	2000
15000	Line Tension	0

LSPD