

**COMPLETION
& PRODUCTION
SERVICES CO.**

**MICRO
LOG**

Company **CHIEFTAIN OIL COMPANY, INC.**
Well **MOLZ #23**
Field **STRANATHAN**
County **BARBER** State **KANSAS**

Company **CHIEFTAIN OIL COMPANY, INC.**
Well **MOLZ #23**
Field **STRANATHAN**
County **BARBER**
State **KANSAS**

Location: **API # : 15-007-24101**
715' FNL & 1670' FWL
SEC 10 TWP 35S RGE 12W
Permanent Datum **GROUND LEVEL** Elevation **1432**
Log Measured From **KELLY BUSHING 13' A.G.L.**
Drilling Measured From **KELLY BUSHING**
Other Services **CDL/CNL/PE DIL**
Elevation **K.B. 1445 D.F. G.L. 1432**

Date	11-18-13
Run Number	THREE
Depth Driller	5645
Depth Logger	5628
Bottom Logged Interval	5620
Top Log Interval	3600
Casing Driller	304
Casing Logger	305
Bit Size	7.875
Type Fluid in Hole	CHEMICAL MUD
Density / Viscosity	9.1 / 75
pH / Fluid Loss	10.0 / 8.0
Source of Sample	FLOWLINE
Rim @ Meas. Temp	0.55 @ 78F
Rmf @ Meas. Temp	0.41 @ 78F
Rmc @ Meas. Temp	0.66 @ 78F
Source of Rmf / Rmc	MEASURED
Rim @ BHT	.330 @ 131F
Time Circulation Stopped	3 HOURS
Time Logger on Bottom	7:30 P.M.
Maximum Recorded Temperature	131F
Equipment Number	860
Location	HAYS, KS.
Recorded By	RUPP
Witnessed By	ARDEN RATZLAFF

<<< Fold Here >>>

All interpretations are opinions based on inferences from electrical or other measurements and we cannot and do not guarantee the accuracy or correctness of any interpretation, and we shall not, except in the case of gross or willful negligence on our part, be liable or responsible for any loss, costs, damages, or expenses incurred or sustained by anyone resulting from any interpretation made by any of our officers, agents or employees. These interpretations are also subject to our general terms and conditions set out in our current Price Schedule.

Comments

NABORS COMPLETION & PRODUCTION SERVICES
785-628-6395
THANK YOU FOR YOUR BUSINESS
DIRECTIONS: HARTDNER, E TO ROWDY RD., 1N, 1W, S INTO.



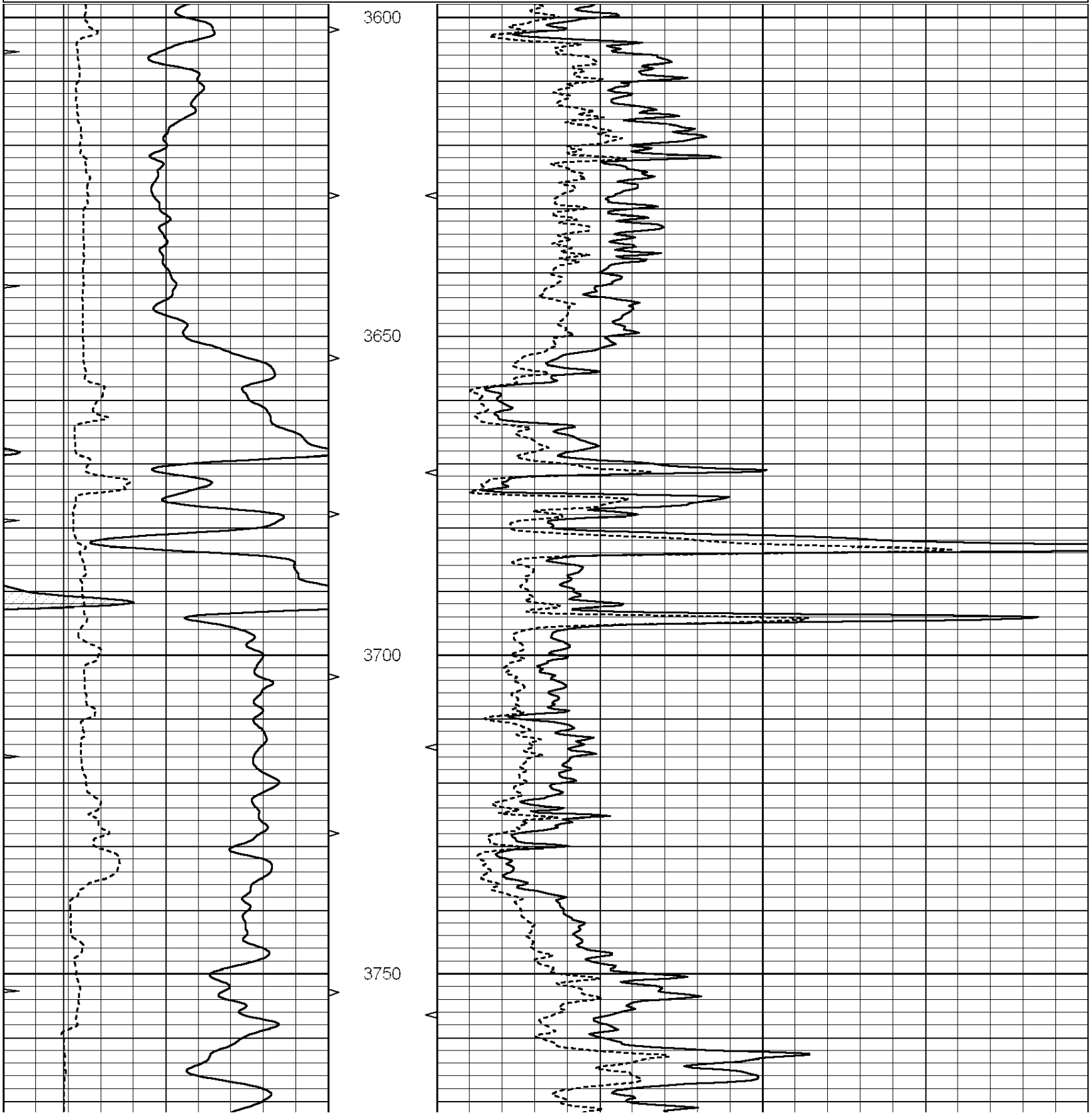
**COMPLETION
& PRODUCTION**

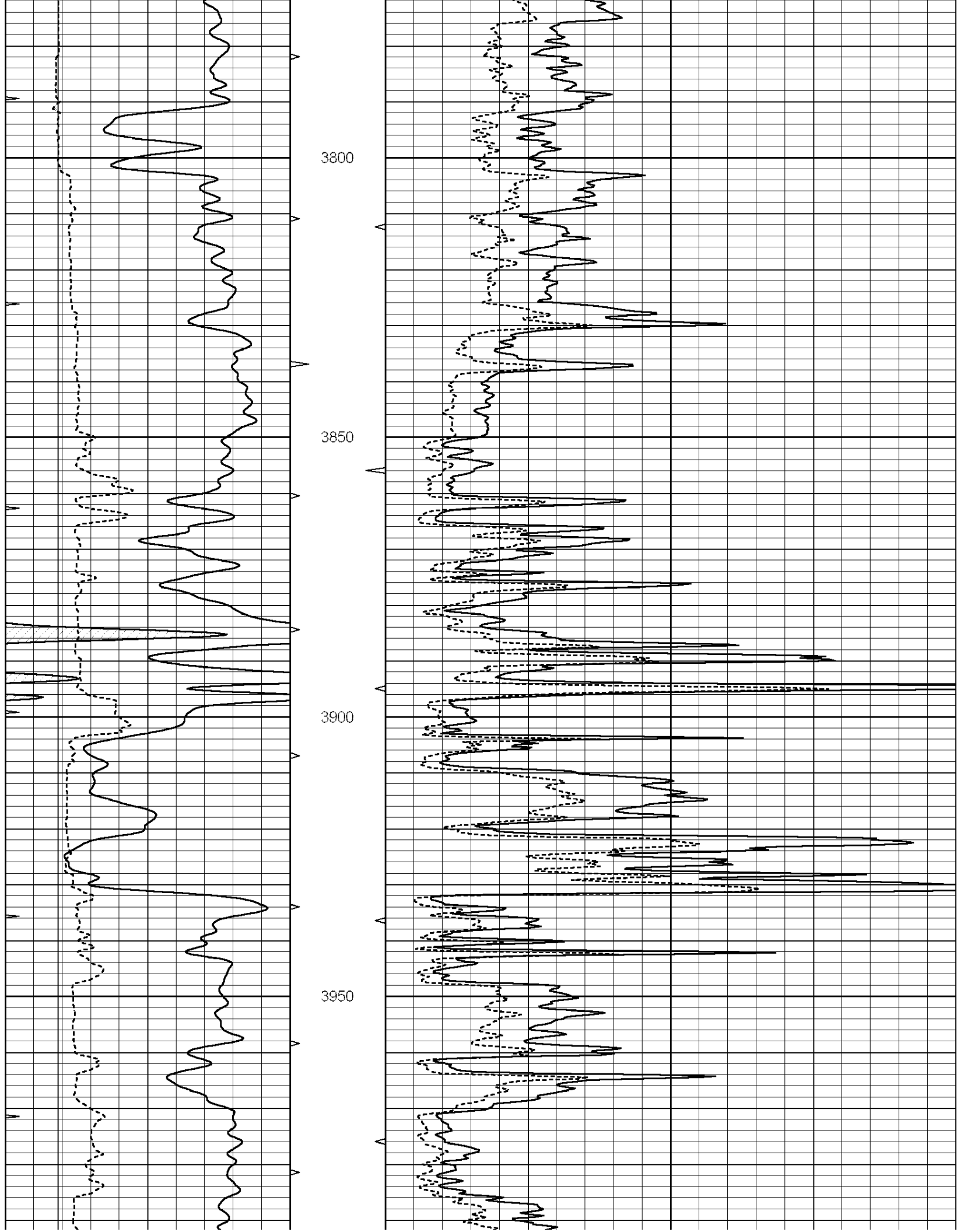
MAIN SECTION

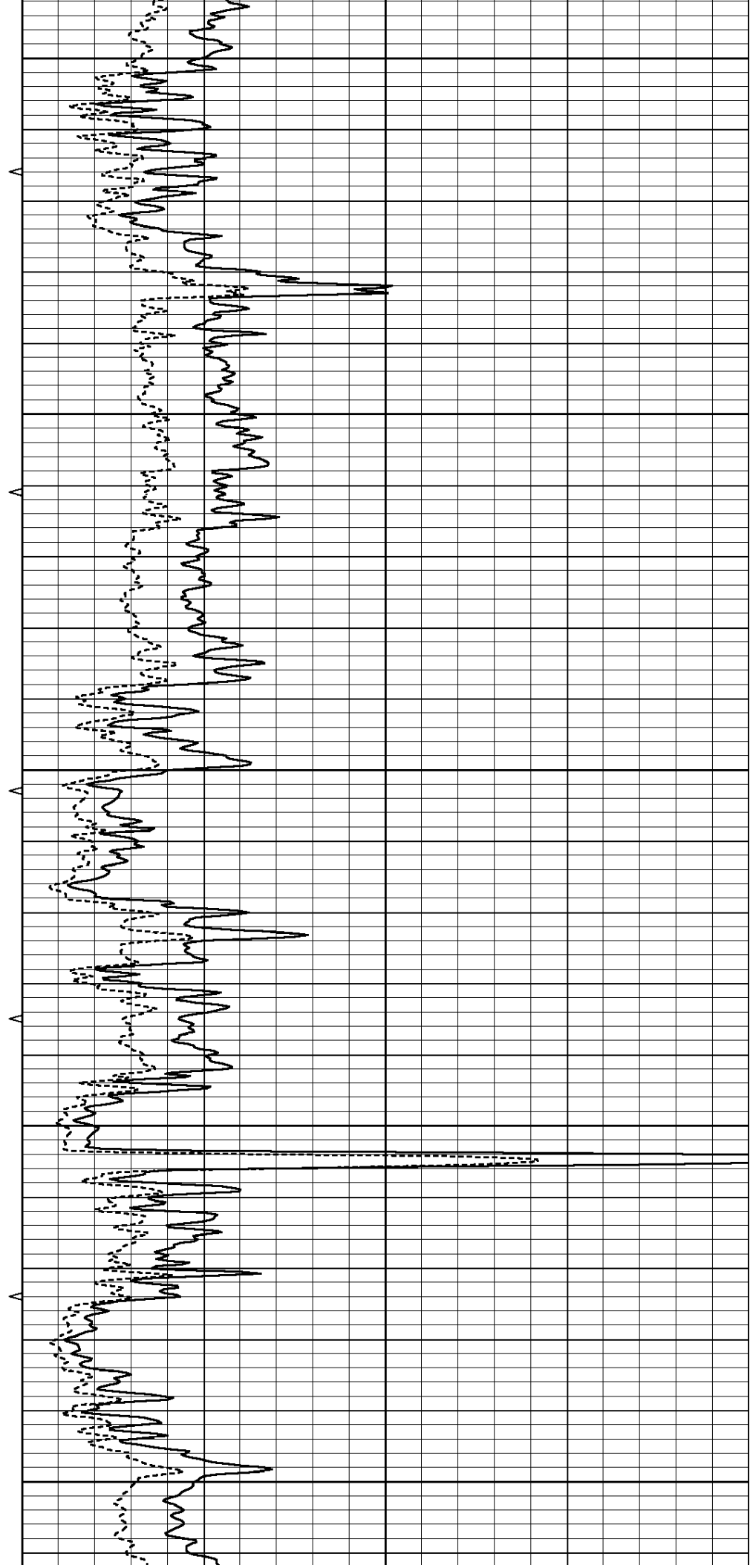
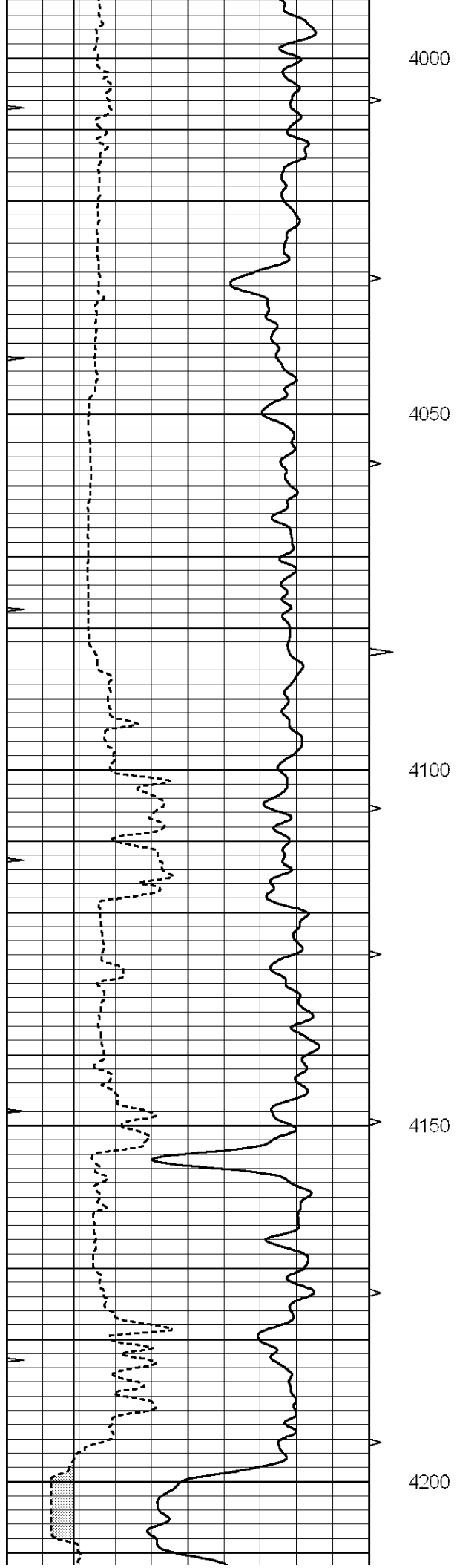
Database File: 012040pdn.db
 Dataset Pathname: pass13.3
 Presentation Format: _micro
 Dataset Creation: Tue Nov 19 03:25:36 2013 by Calc Open-Cased 090629
 Charted by: Depth in Feet scaled 1:240

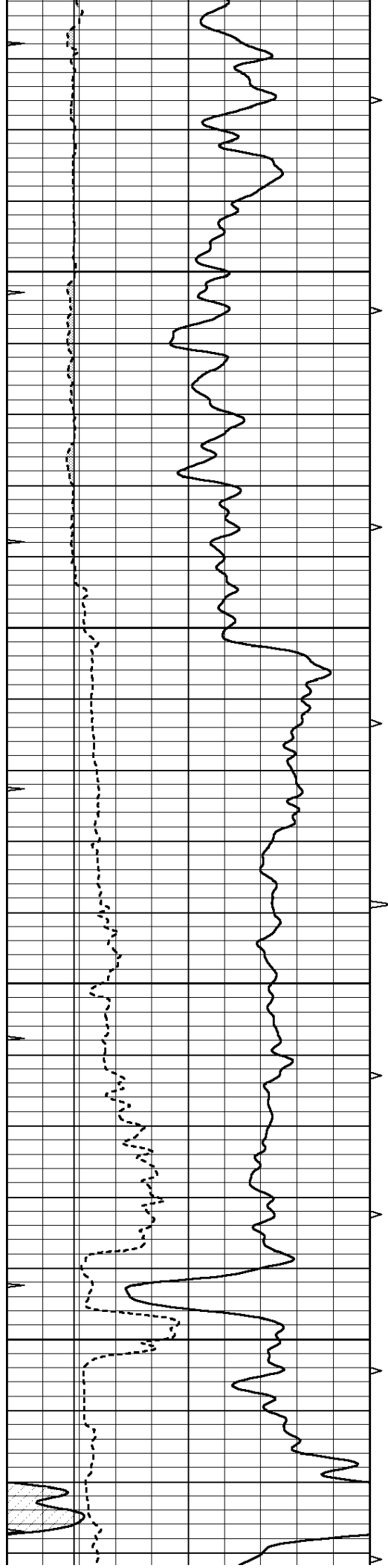
0	GAMMA RAY (GAPI)	150
6	MELCAL (in)	16
0	MINMK	20

0	MEL1.5 (Ohm-m)	40
0	MEL2.0 (Ohm-m)	40







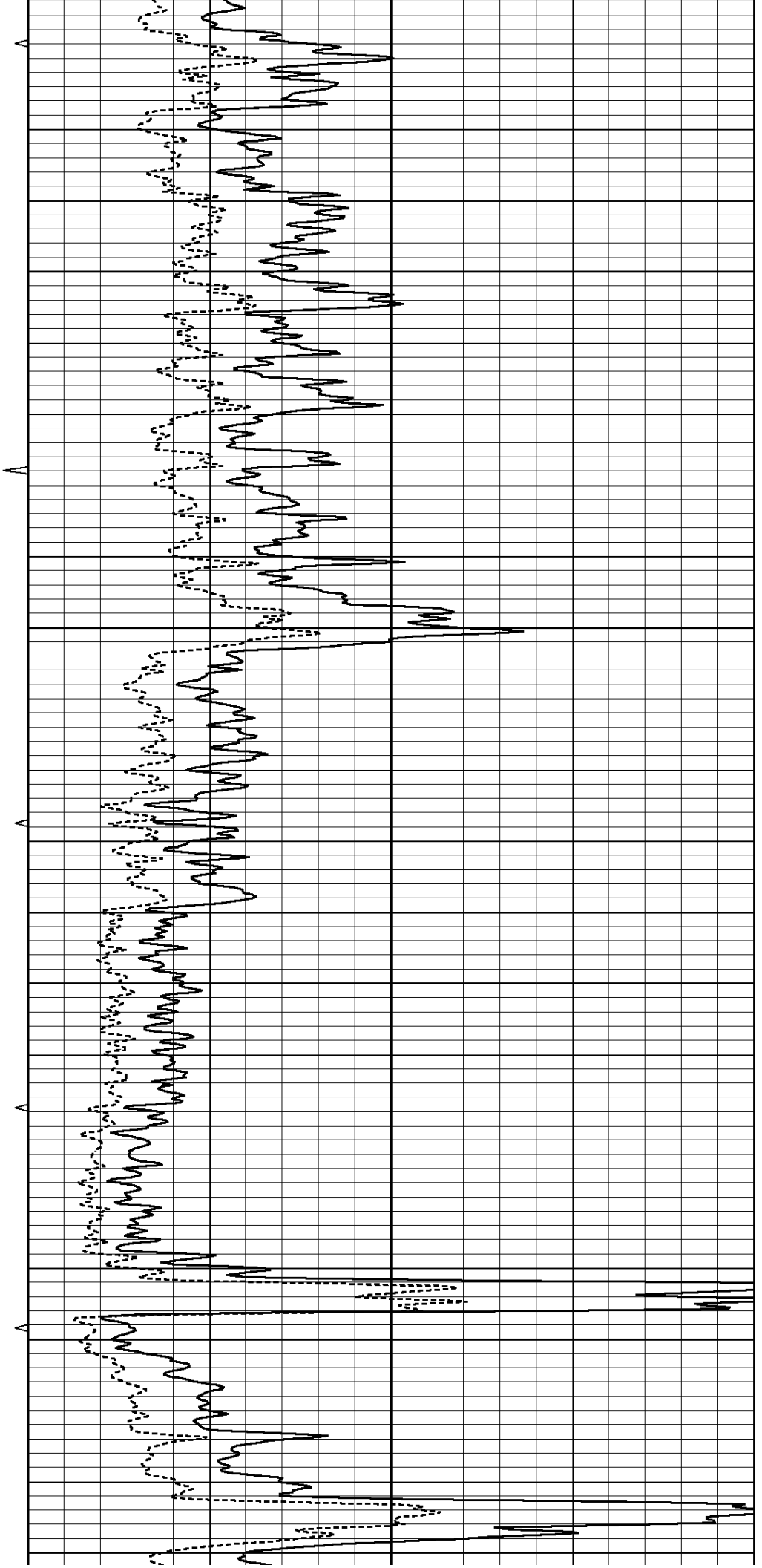


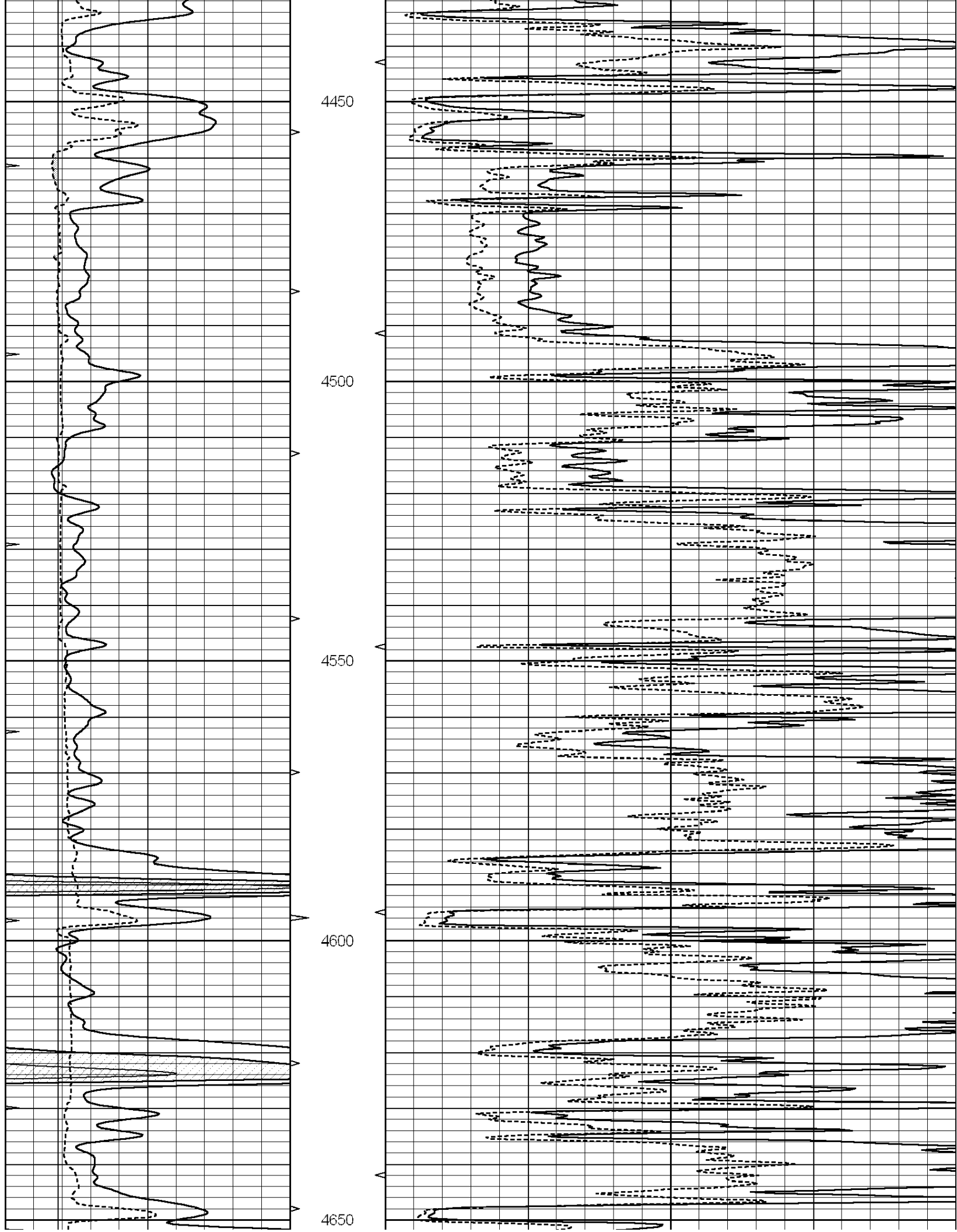
4250

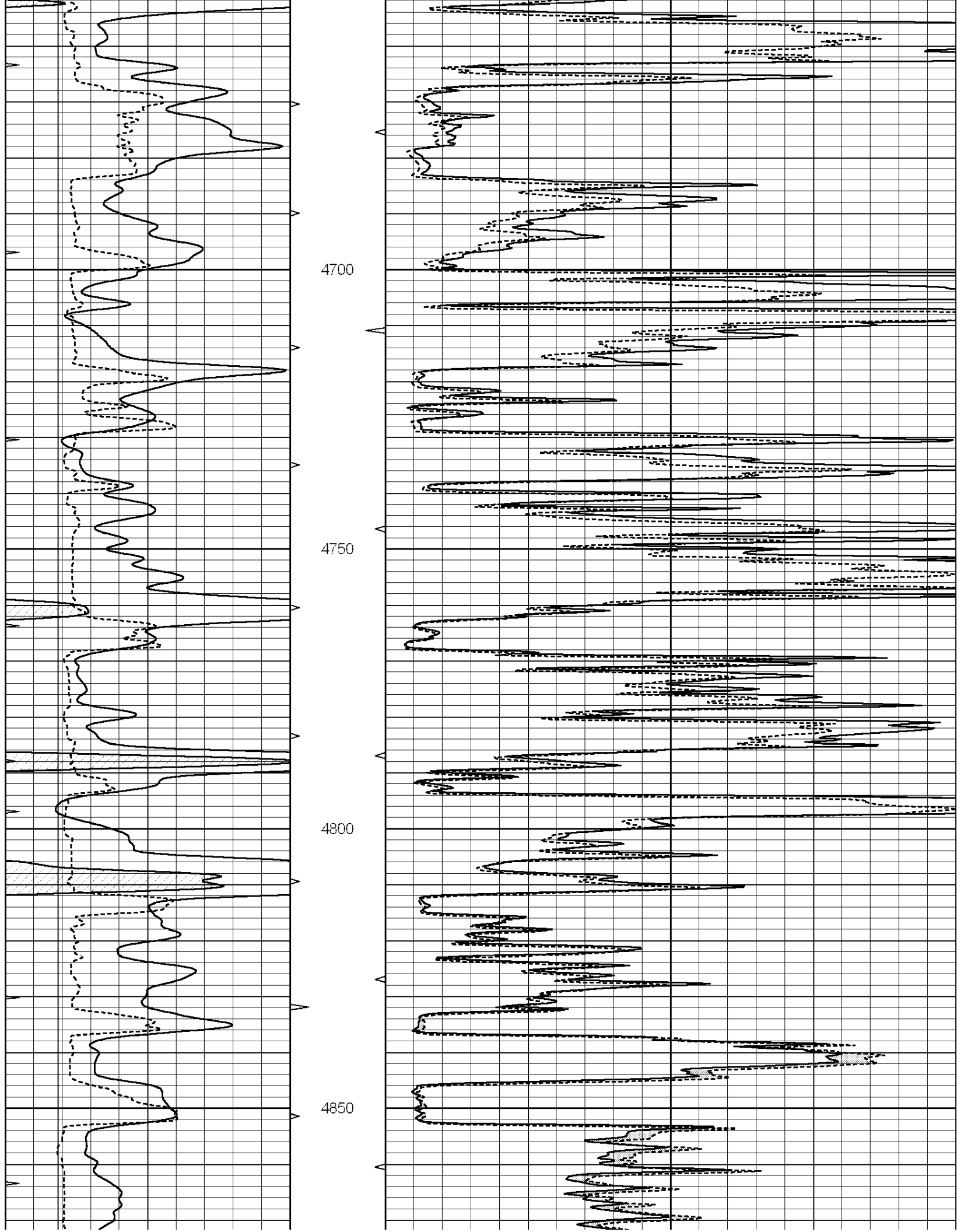
4300

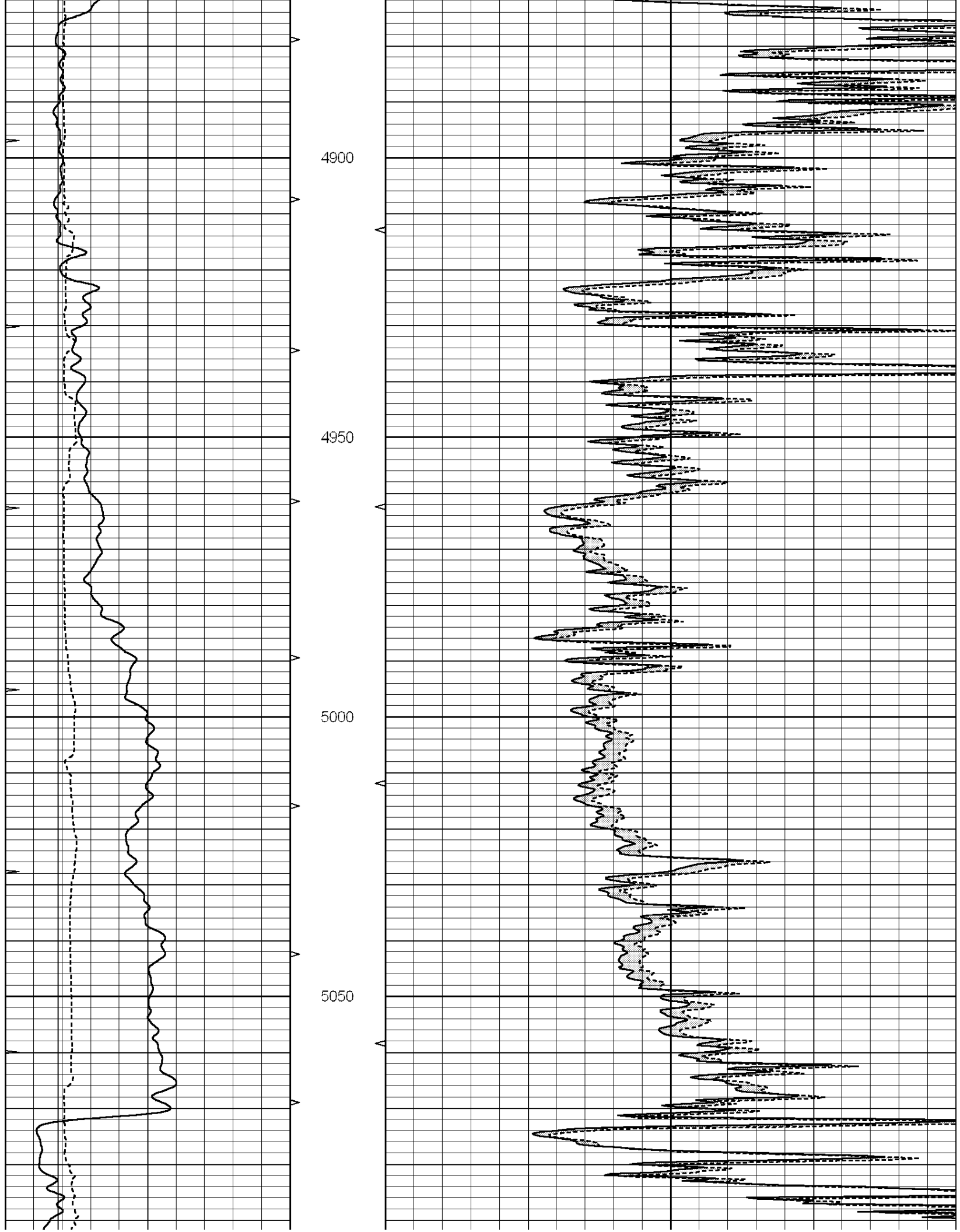
4350

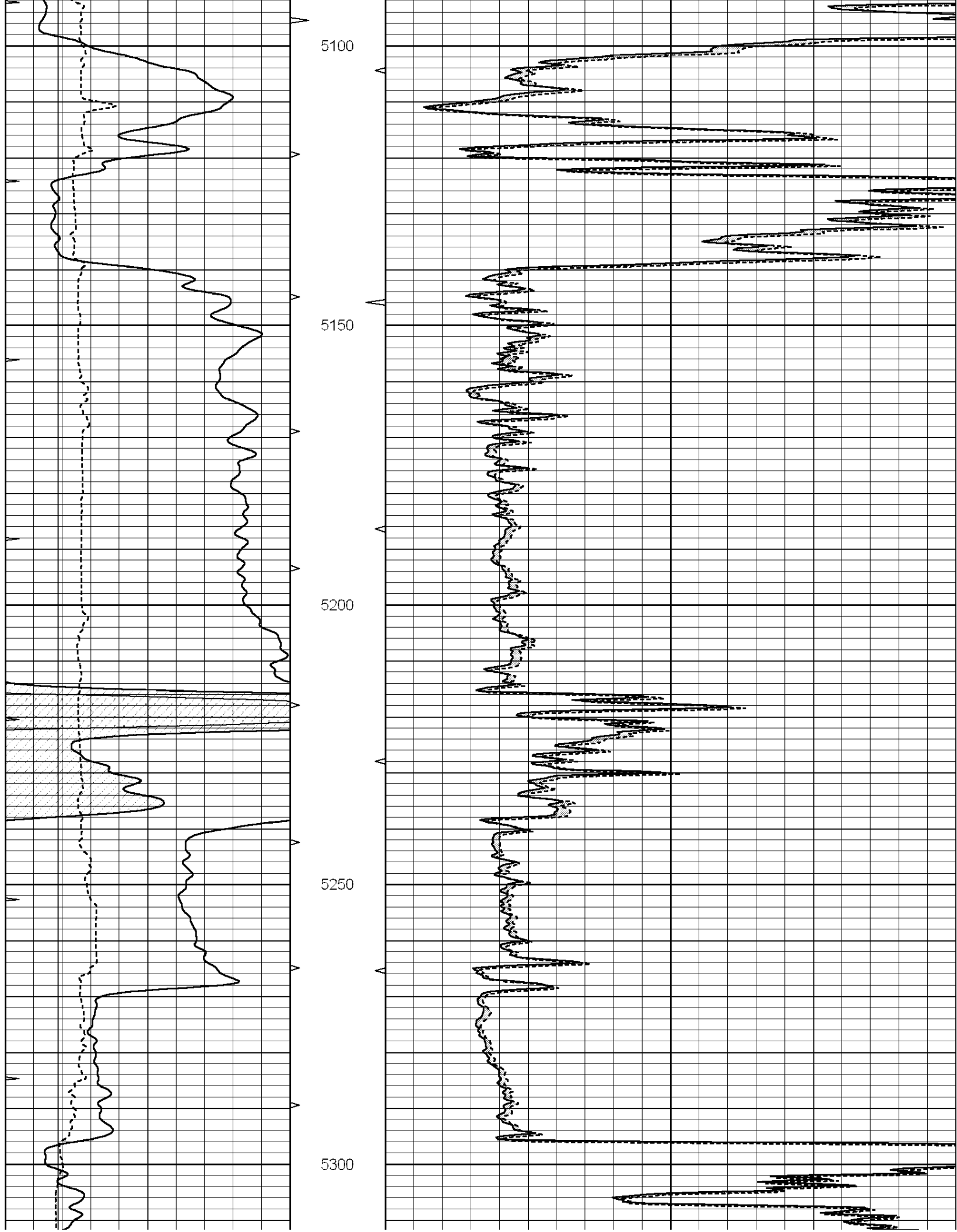
4400

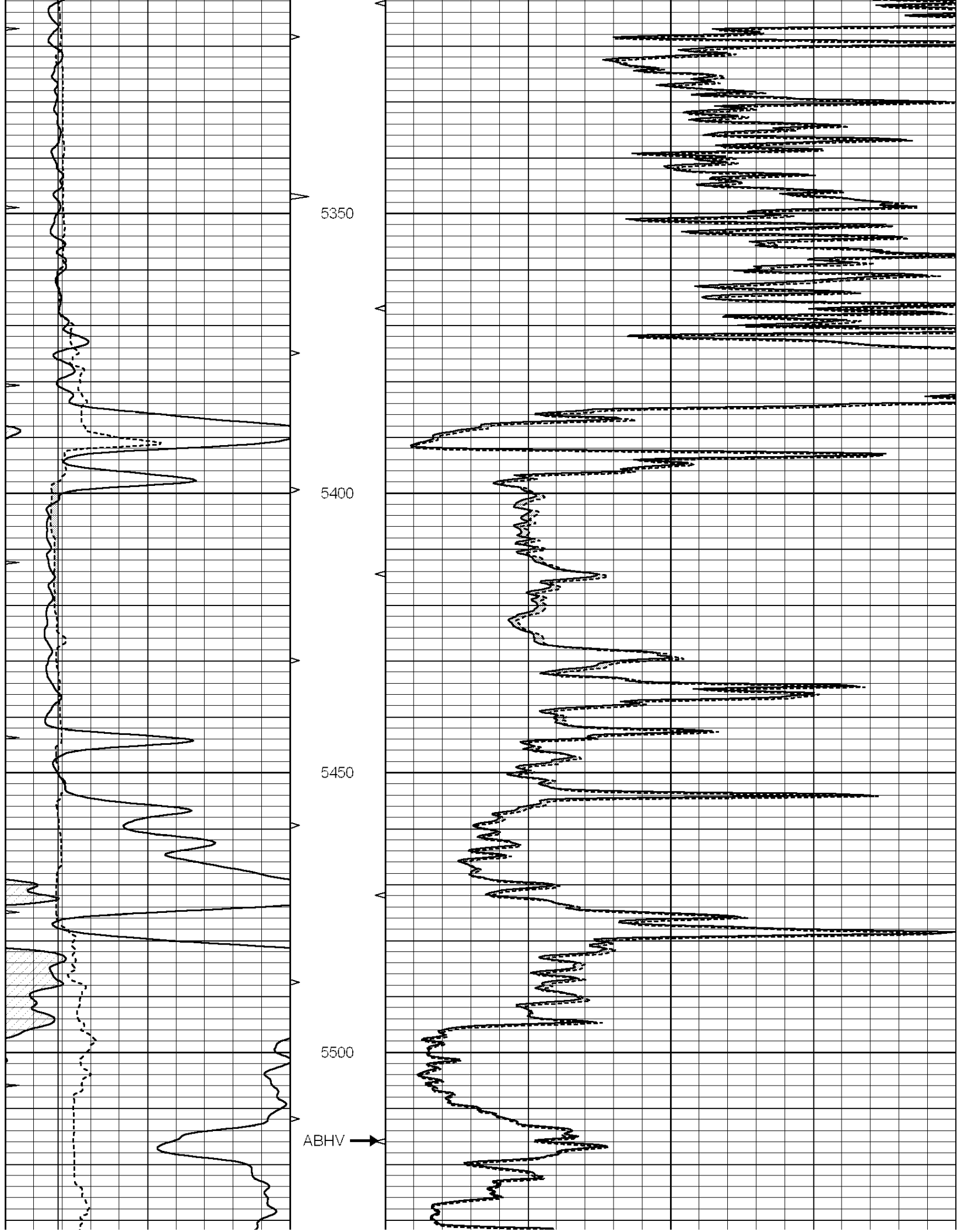


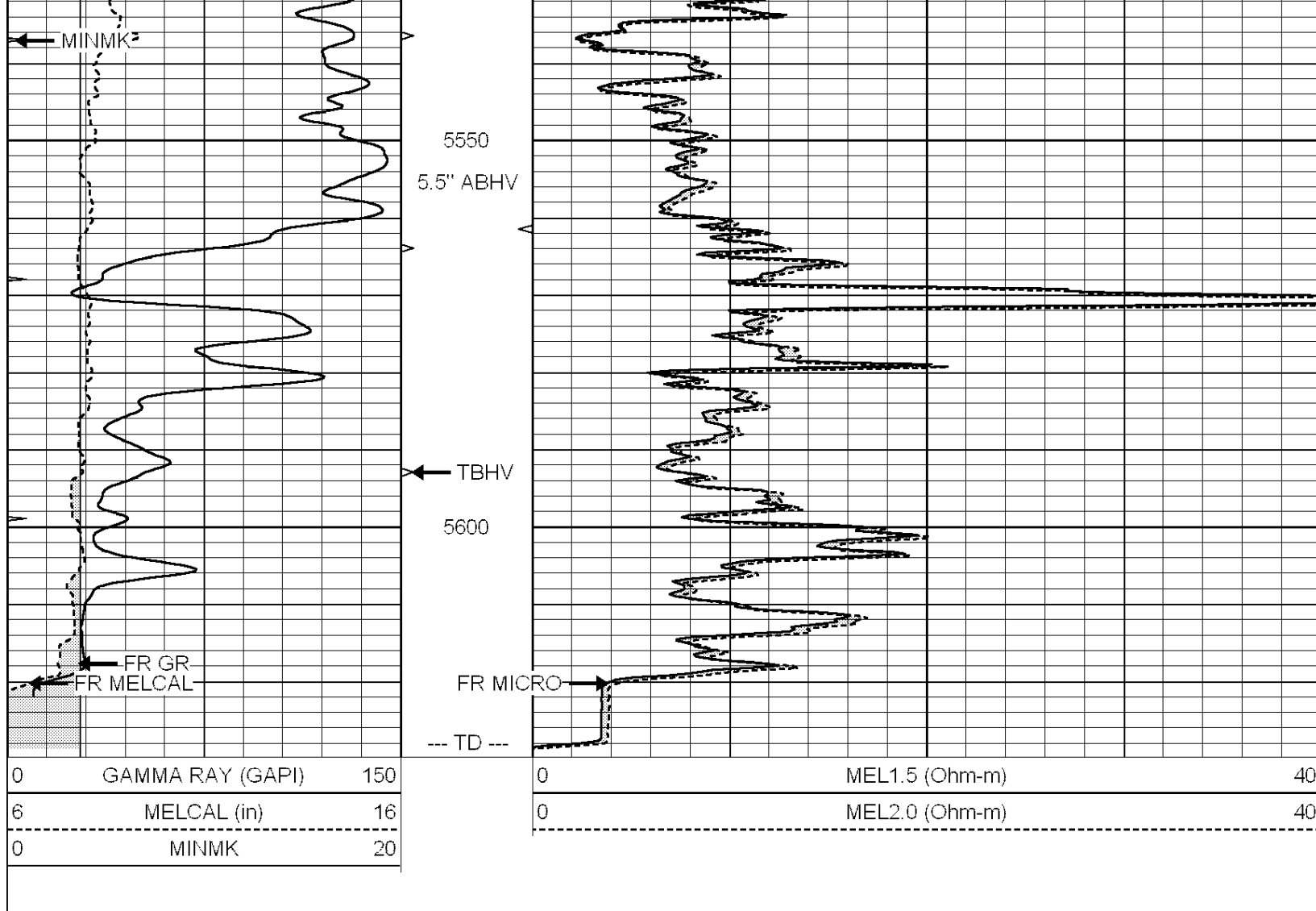








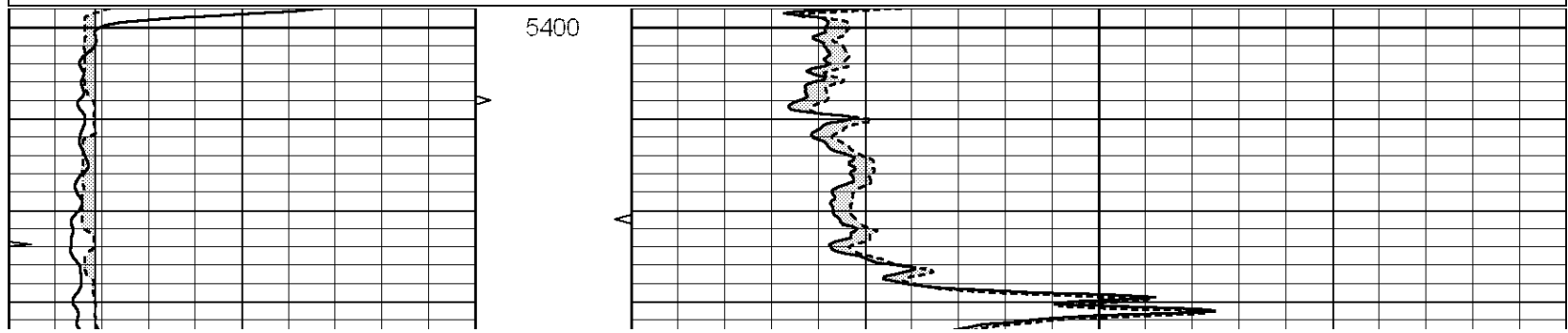


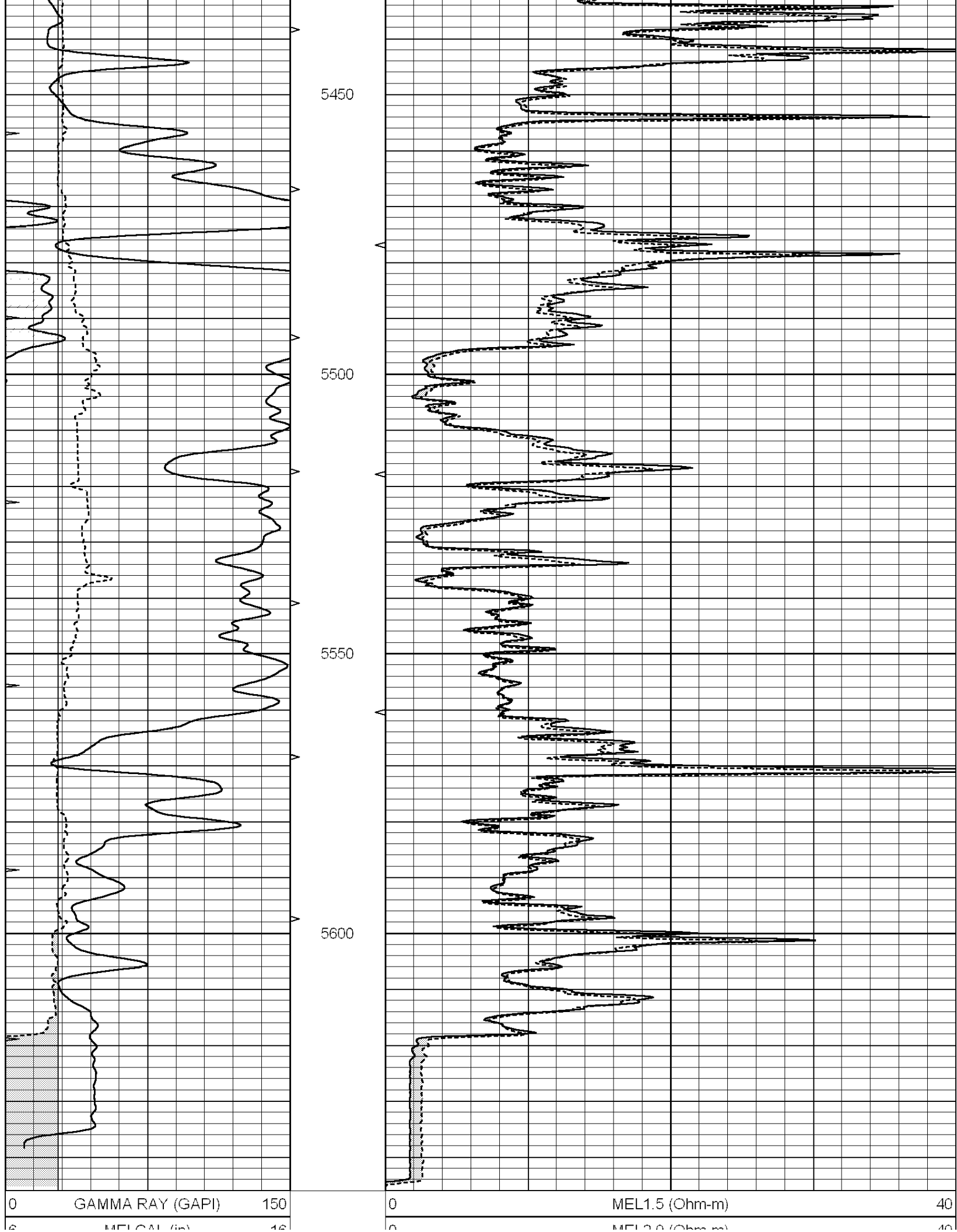


REPEAT SECTION

Database File: 012040pdn.db
 Dataset Pathname: pass12.A
 Presentation Format: _micro
 Dataset Creation: Tue Nov 19 03:13:57 2013 by Calc Open-Cased 090629
 Charted by: Depth in Feet scaled 1:240

0	GAMMA RAY (GAPI)	150	0	MEL1.5 (Ohm-m)	40
6	MELCAL (in)	16	0	MEL2.0 (Ohm-m)	40
0	MINMK	20			





0	MELCAL (in)	10
0	MINMK	20

0	MELZ.0 (CHIM)	40
---	---------------	----

Calibration Report

Database File: 012040pdn.db
 Dataset Pathname: pass13.3
 Dataset Creation: Tue Nov 19 03:25:36 2013 by Calc Open-Cased 090629

MICRO Calibration Report

Serial Number: MICRO4
 Tool Model: PROBE
 Performed: Tue Nov 19 03:11:30 2013

Caliper Calibration:	Gain=2.947	Offset=-9.300
	Low Cal	High Cal
References	8.600	14.000
Readings	5.934	7.767

1.5" Calibration:	Gain=25.000	Offset=-0.200
	Low Cal	High Cal
References	0.000	20.000
Readings	0.009	1.541

2" Calibration:	Gain=100.000	Offset=-0.200
	Low Cal	High Cal
References	0.000	20.000
Readings	0.004	1.198

Gamma Ray Calibration Report

Serial Number: GR5
 Tool Model: OPEN
 Performed: Tue Nov 19 02:10:14 2013

Calibrator Value:	1.0	GAPI
Background Reading:	0.0	cps
Calibrator Reading:	1.0	cps
Sensitivity:	0.3300	GAPI/cps