



**Sonic Cement
Bond Log**

15-007-24101

Company **Chieftain Oil Company, Inc.**
 Well **Molz #23**
 Field **Stranathan**
 County **Barber** State **Kansas**

Location **715' FNL & 1670' FWL**

Sec: **10** Twp: **35S** Rge: **12W**

Other Services
Mast Trailer

Permanent Datum **Ground Level** Elevation **1432**
 Log Measured From **Kelly Bushing** 13 Ft. Above Perm. Datum
 Drilling Measured From **Kelly Bushing**

Elevation
K.B. 1445
D.F. _____
G.L. 1432

Run Number	One	
Date Survey	11/26/2013	
Date Cementing	11/19/2013	
Type Cementing Operation	Primary	
Depth Driller	5645	
Depth Logger	5580	
Logged Interval	5579 to 3850	to
Casing Driller	5.5 @ TD	@
Float Collar -- D.V. Tool	////	////
Squeeze Depth	////	
Amount & Type Cement	////	
Amount & Type Admix	////	
Type Fluid In Hole	Water	
Fluid Level	Full	
Salinity PPM CL	////	
Weight lb/gal -- Vis.	////	////
Approx. Logged Cement Top		
Calculated Cement Top	3984	
Max. Hole Temperature	////	
Tool No.	DIG02	
Spacing Recorded	3-5	
Equipment -- Location	02 Pratt	
Recorded By	N. Schneider	
Witnessed By	Ryan Molz	

<<< Fold Here >>>

All interpretations are opinions based on inferences from electrical or other measurements and we cannot and do not guarantee the accuracy or correctness of any interpretation, and we shall not, except in the case of gross or willful negligence on our part, be liable or responsible for any loss, costs, damages, or expenses incurred or sustained by anyone resulting from any interpretation made by any of our officers, agents or employees. These interpretations are also subject to our general terms and conditions set out in our current Price Schedule.

Comments

Thank you for using Excel Wireline (620) 388-5676

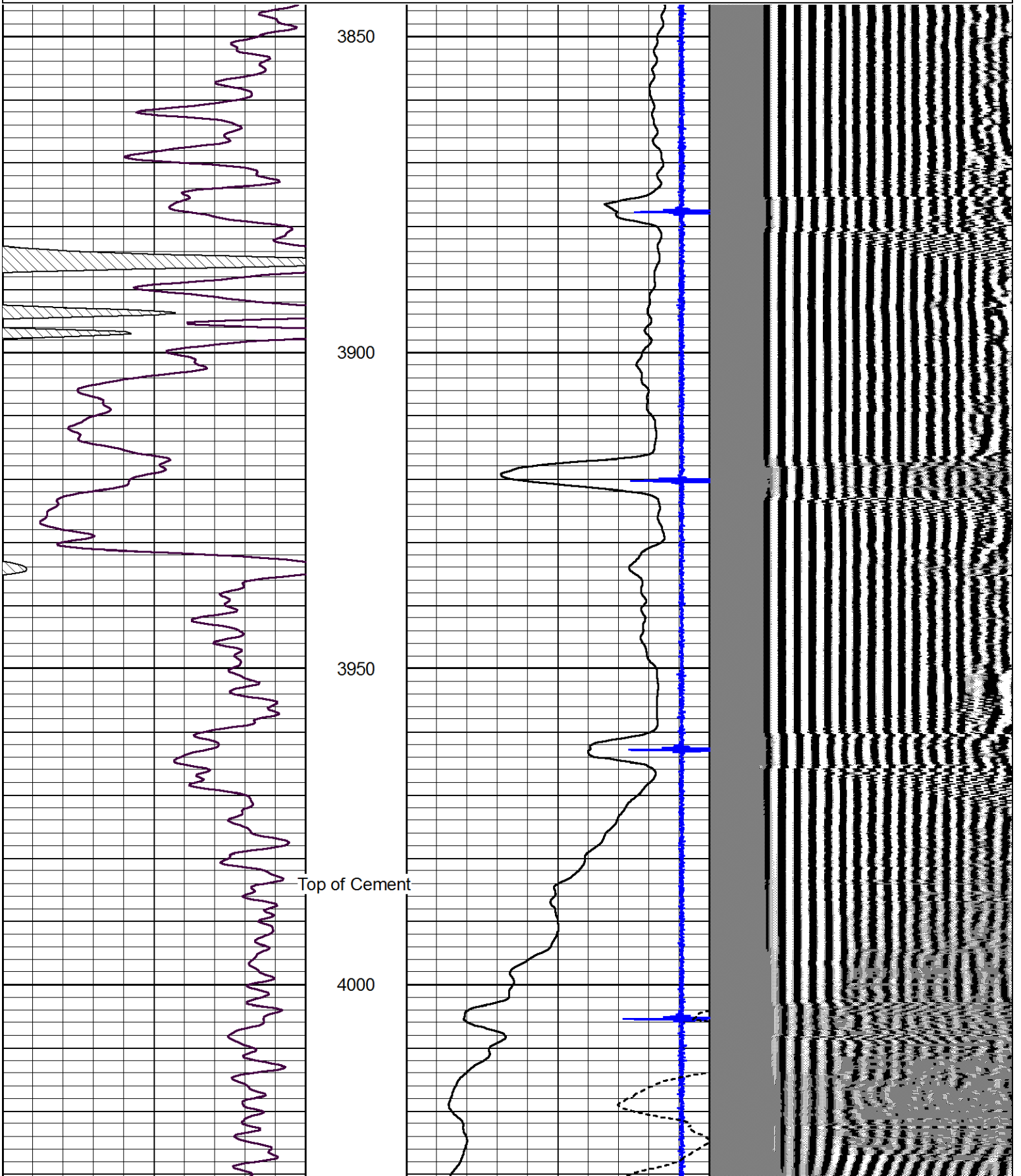
Hardtner
E to Roundup Rd
N then W into

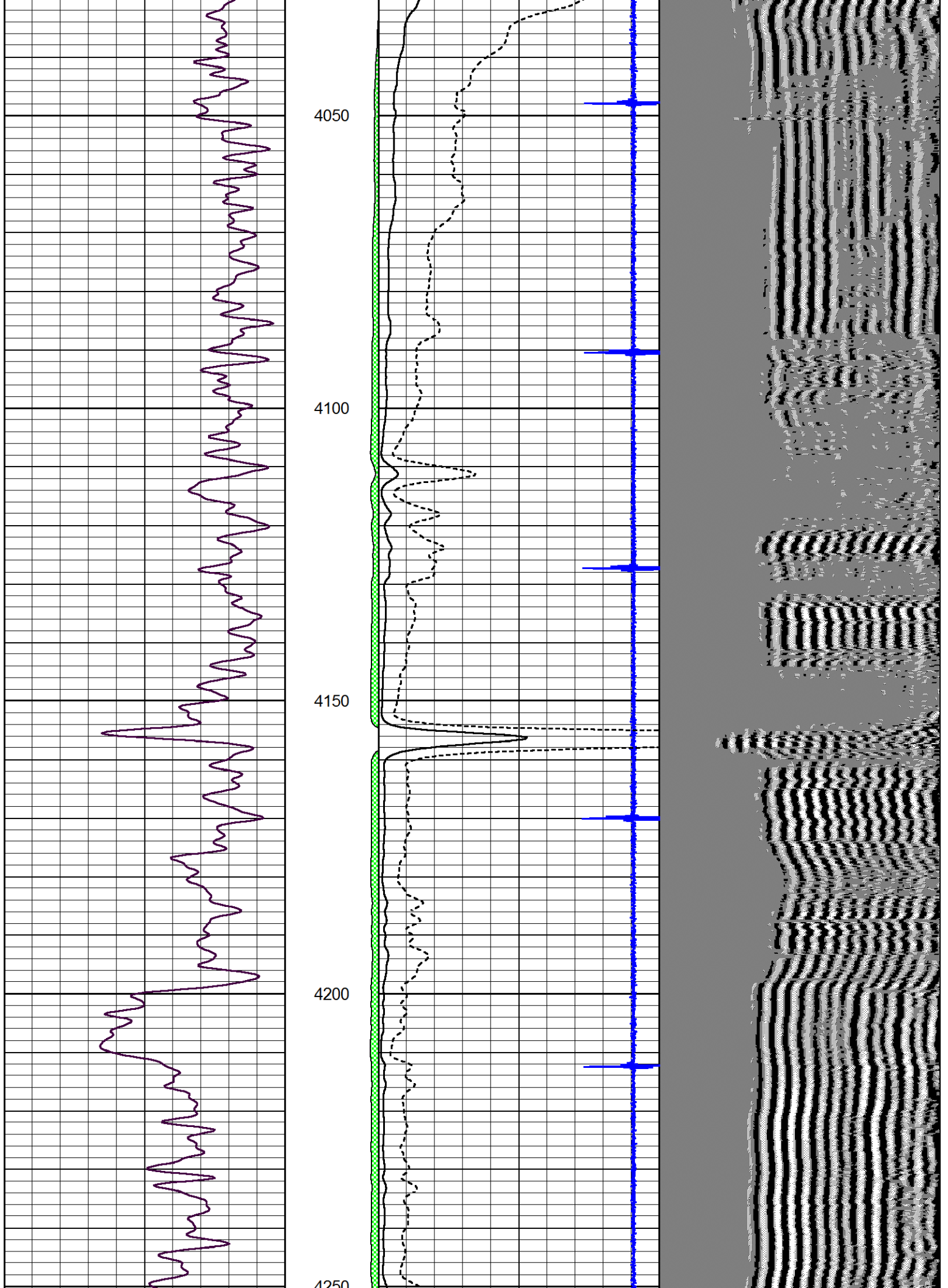


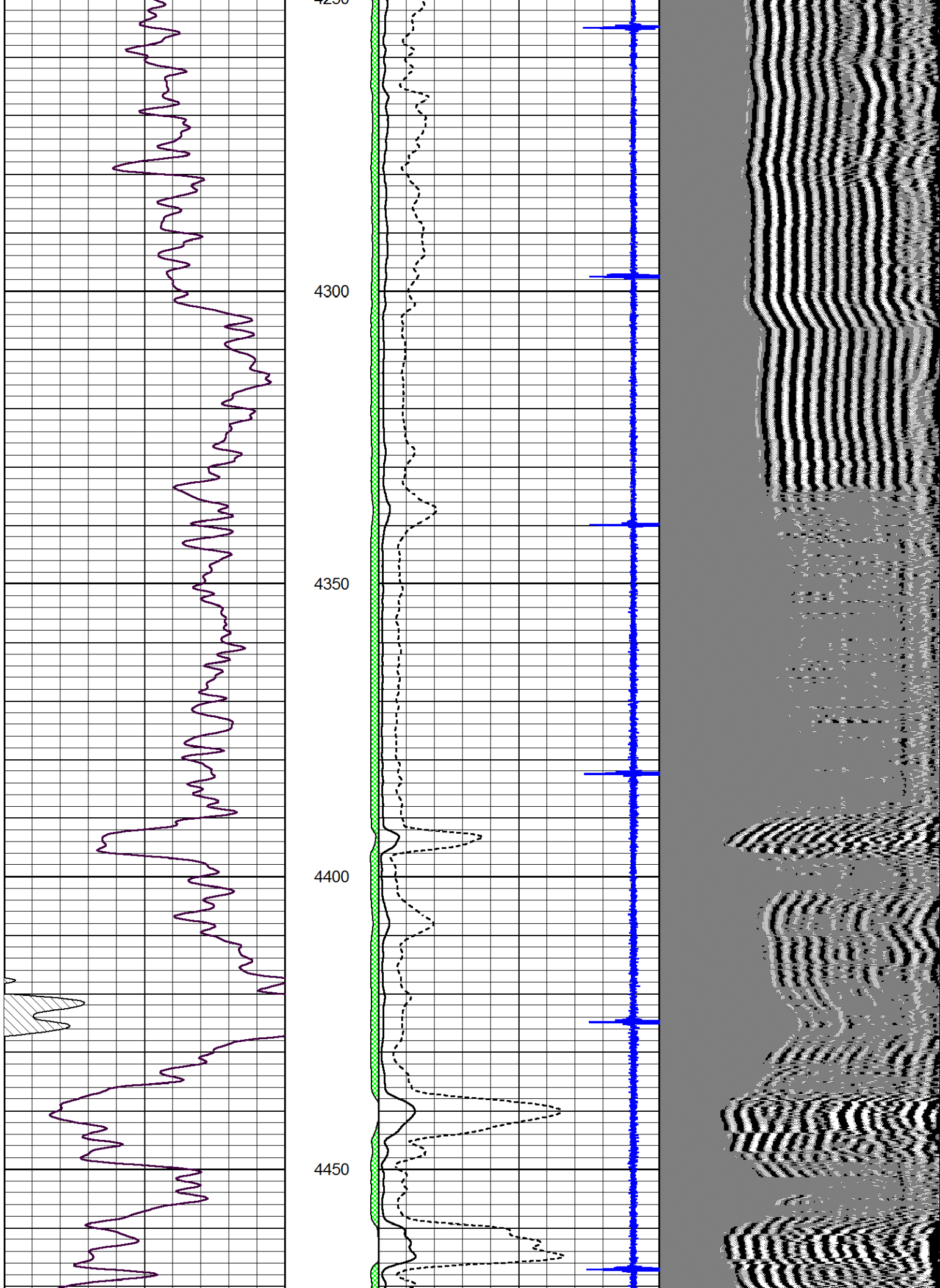
Main Pass

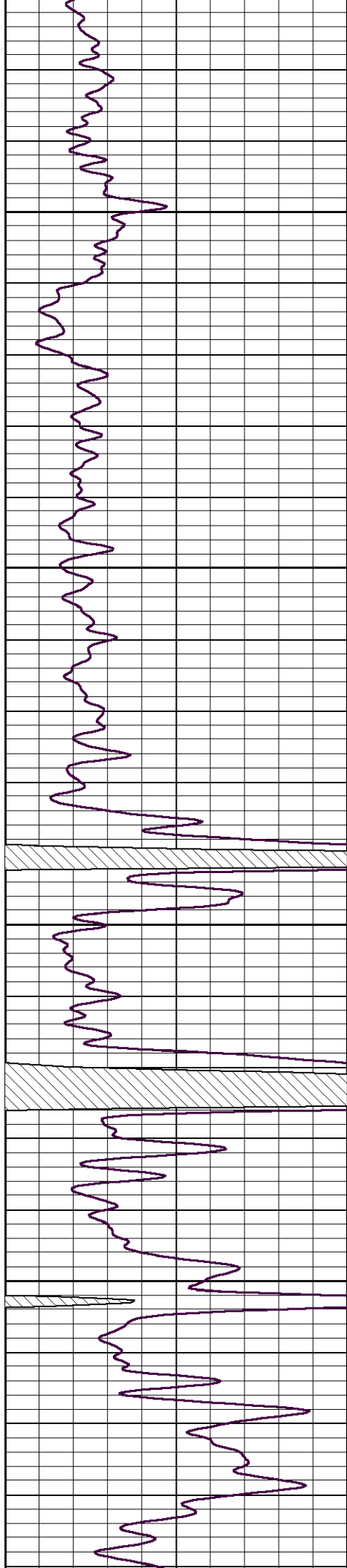
Database File chieftain_molz_23.db
 Dataset Pathname grcbl/pass6
 Presentation Format cbl dr
 Dataset Creation Tue Nov 26 08:48:14 2013
 Charted by Depth in Feet scaled 1:240

0	Gamma Ray (GAPI)	150	amp3ft	3	Casing Collars	-0.3	200	wvf5ft	1200
			(mV)	0	Amplified Amplitude (mV)	100			
			-100 10	0	Pipe Amplitude (mV)	20			







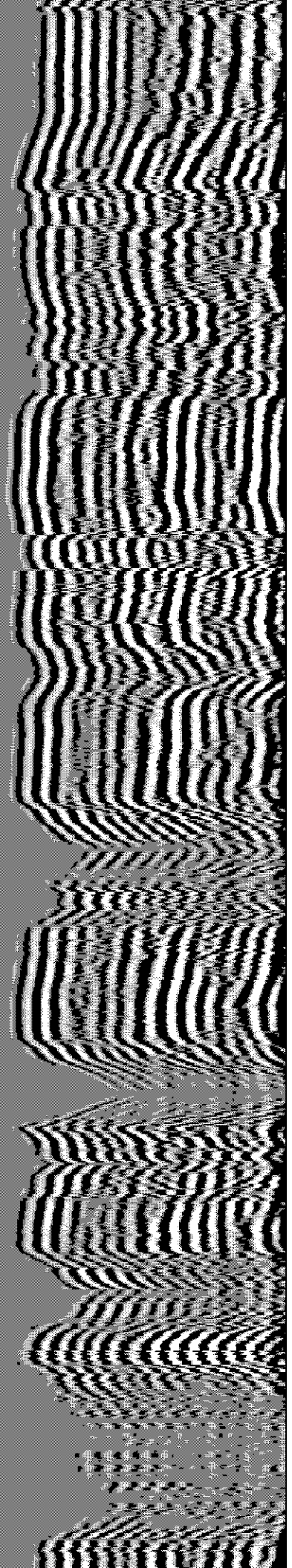
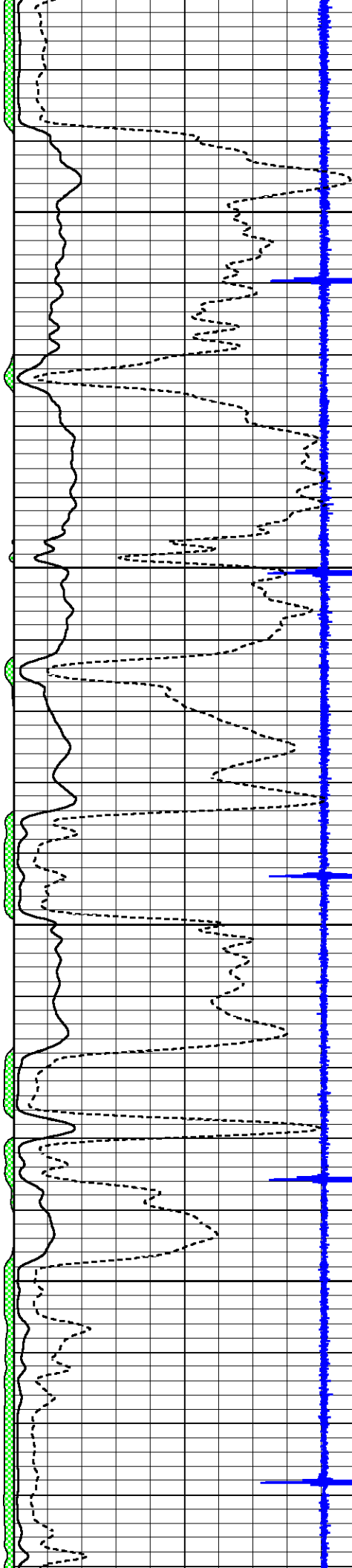


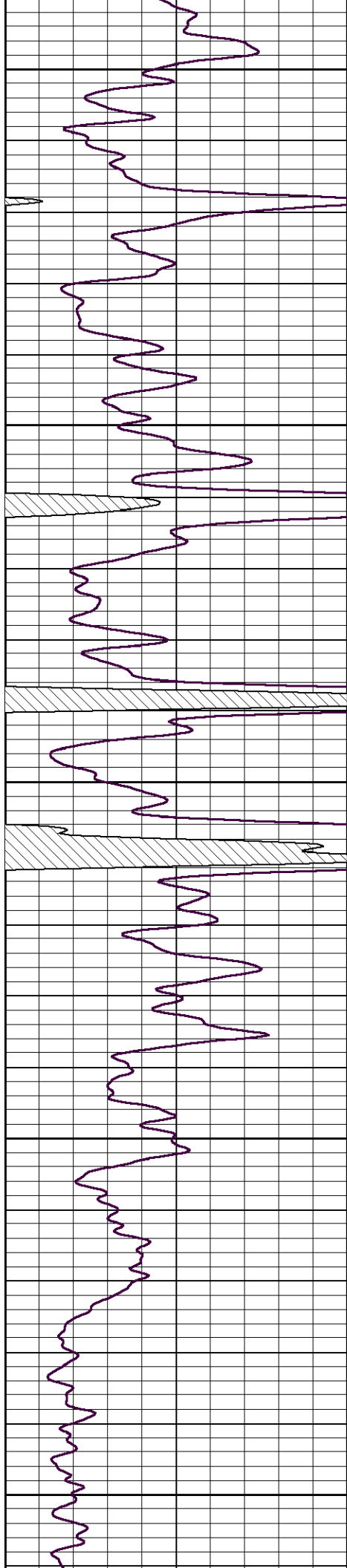
4500

4550

4600

4650





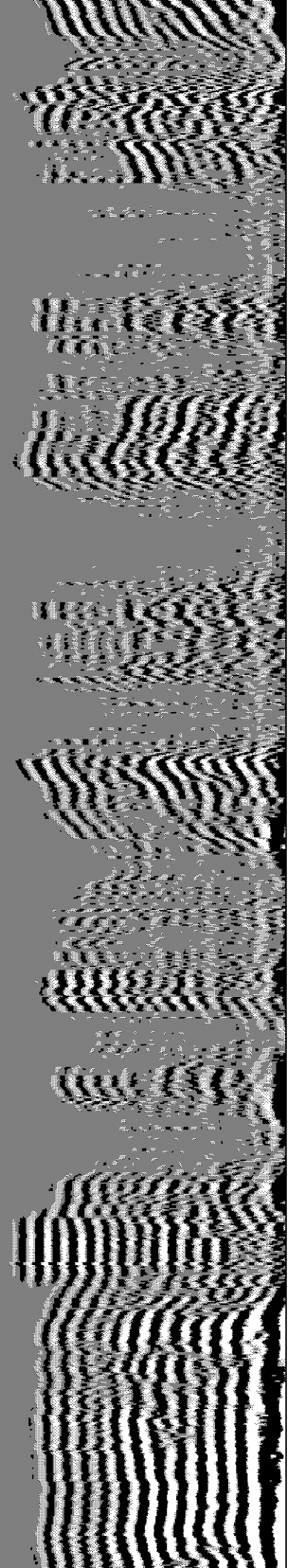
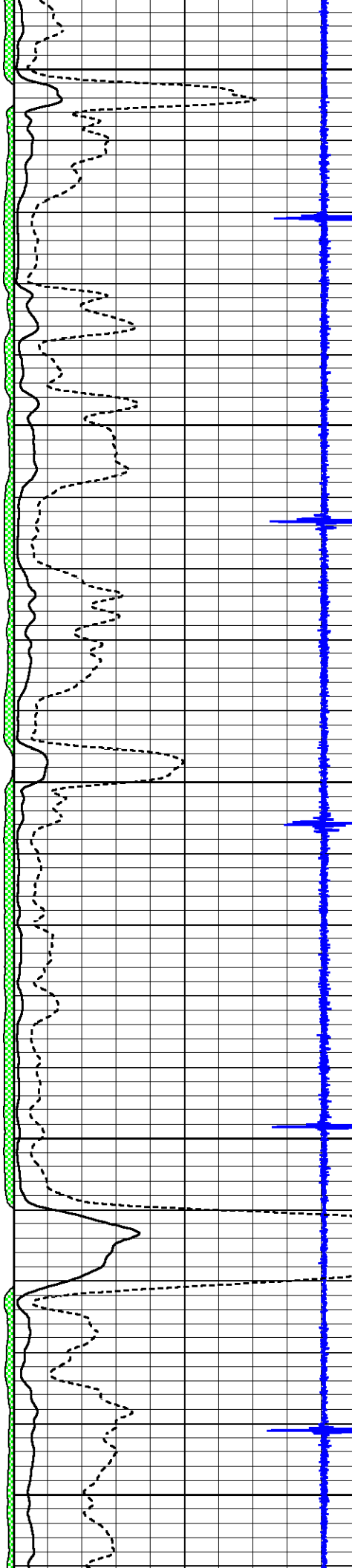
4700

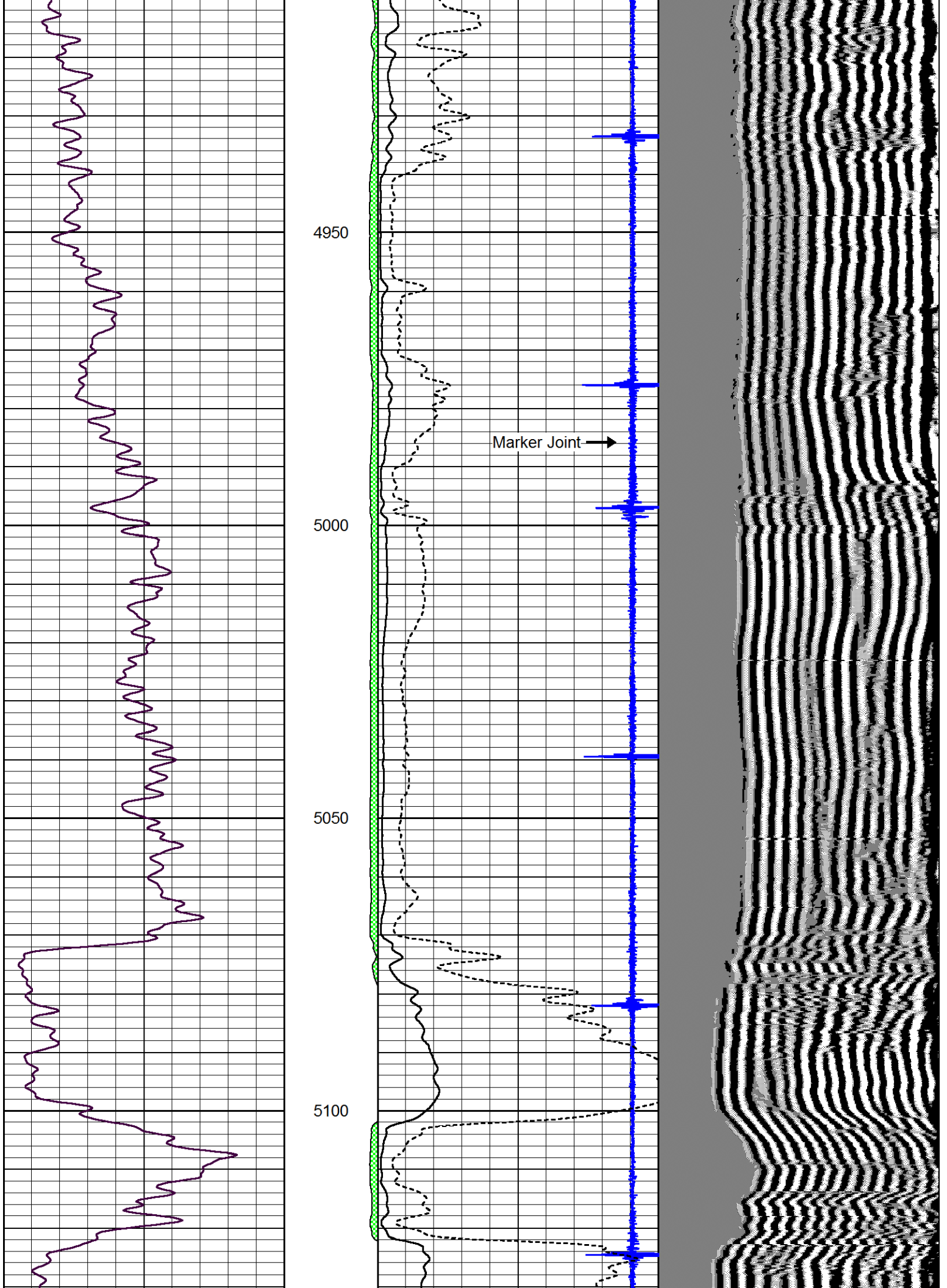
4750

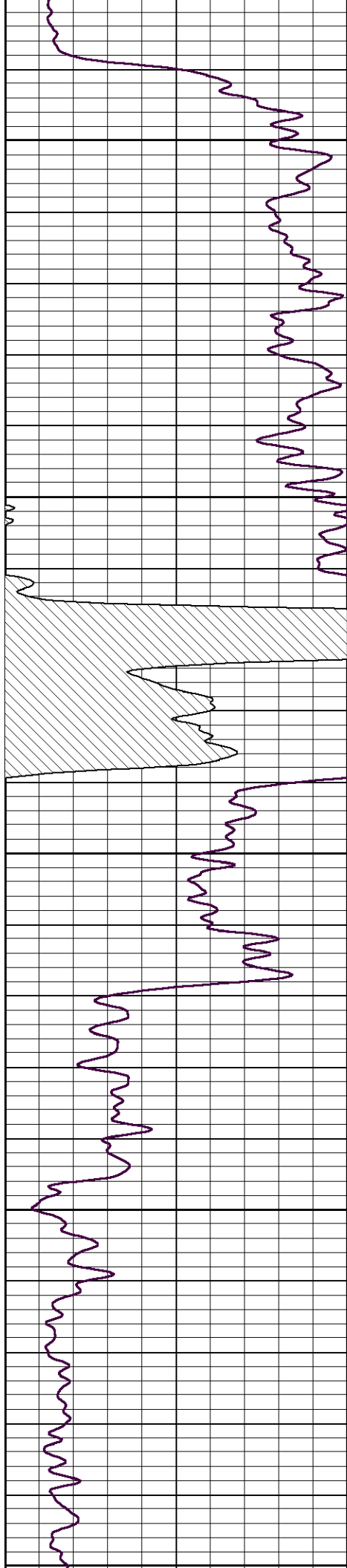
4800

4850

4900







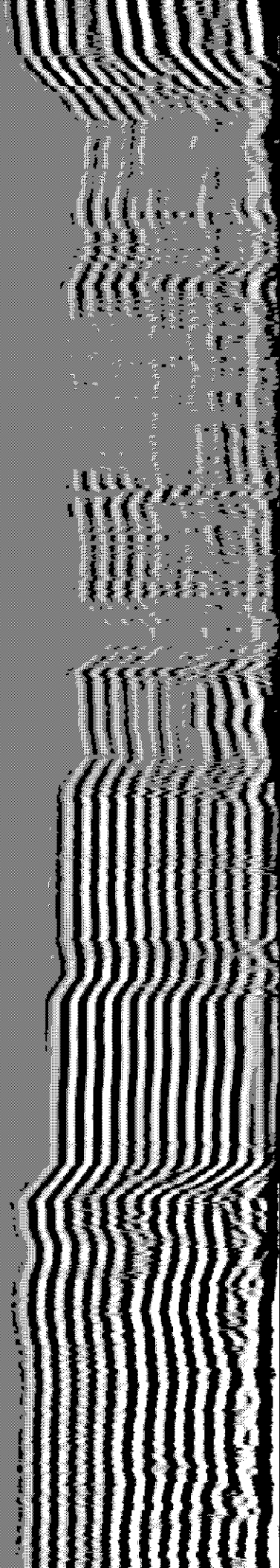
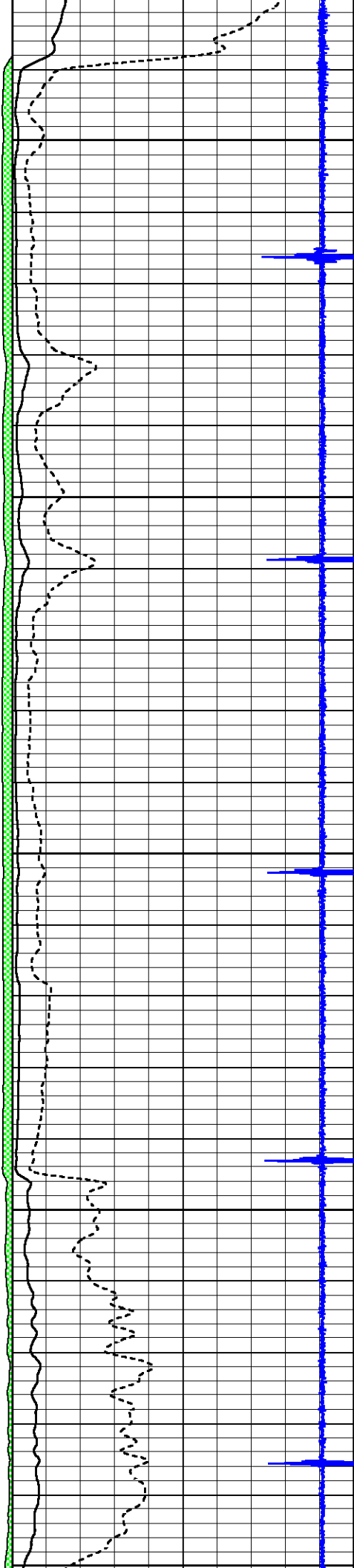
5150

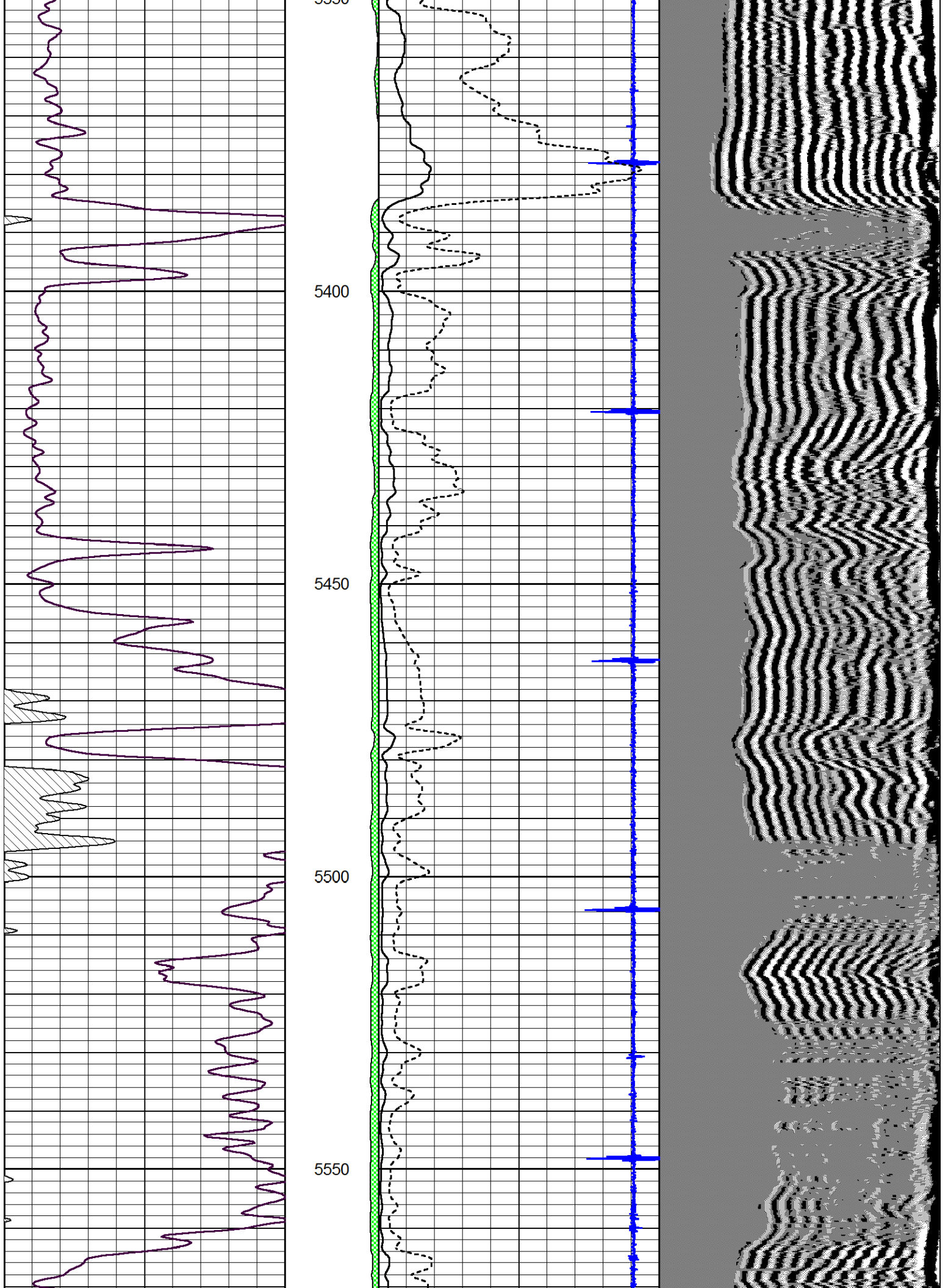
5200

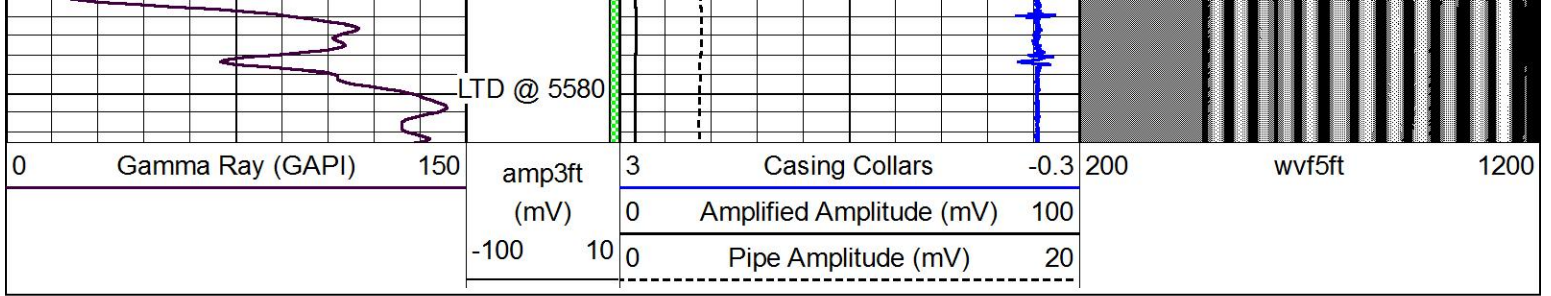
5250

5300

5350

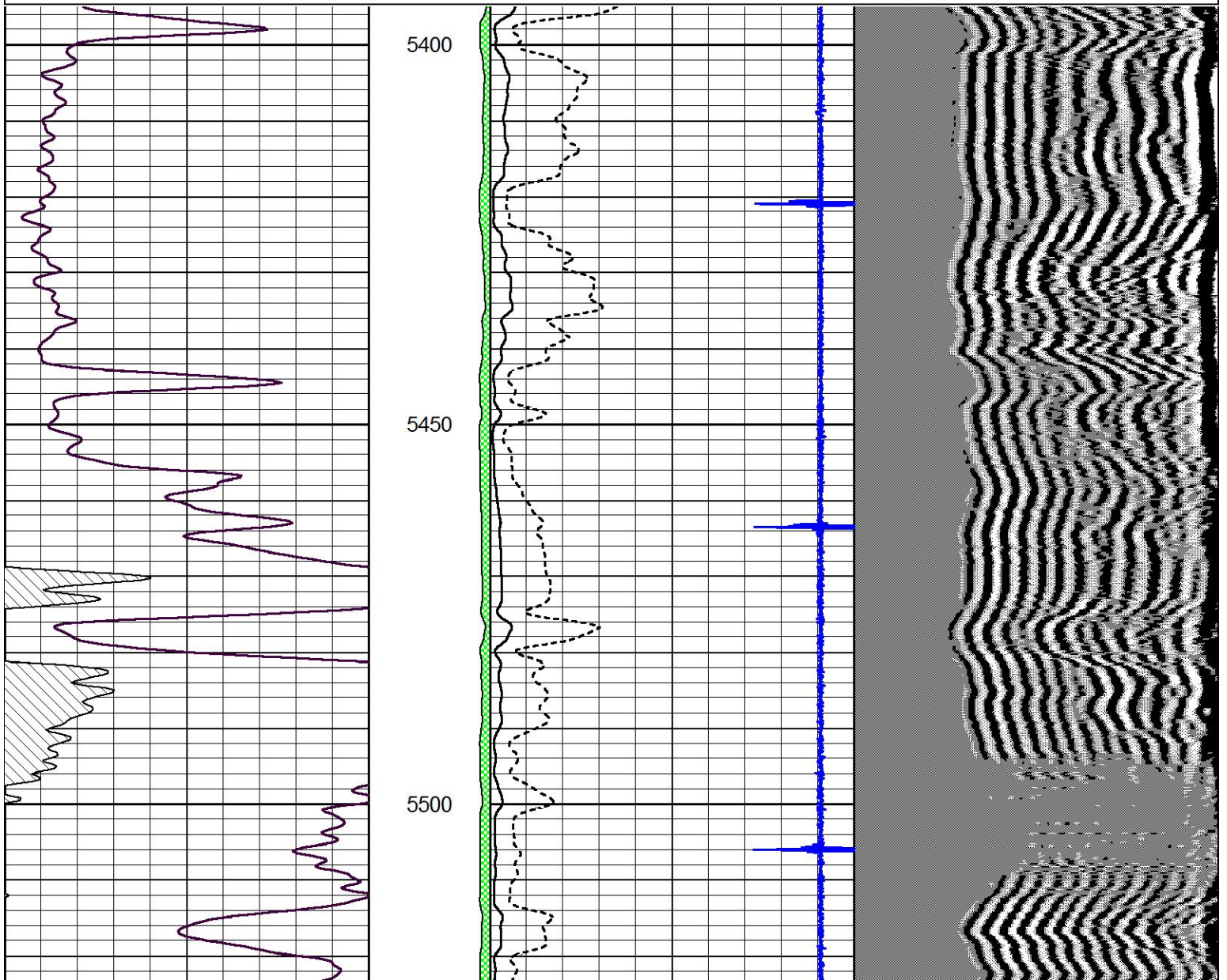
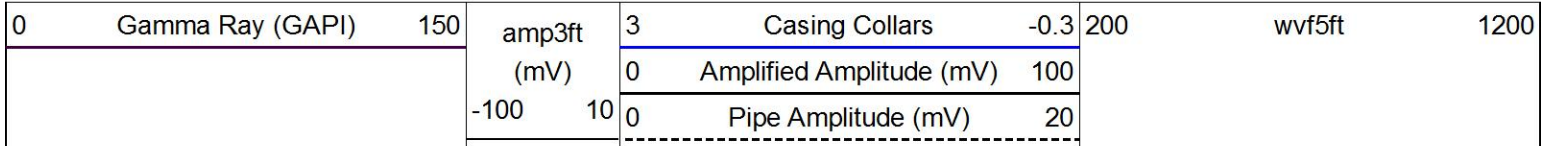


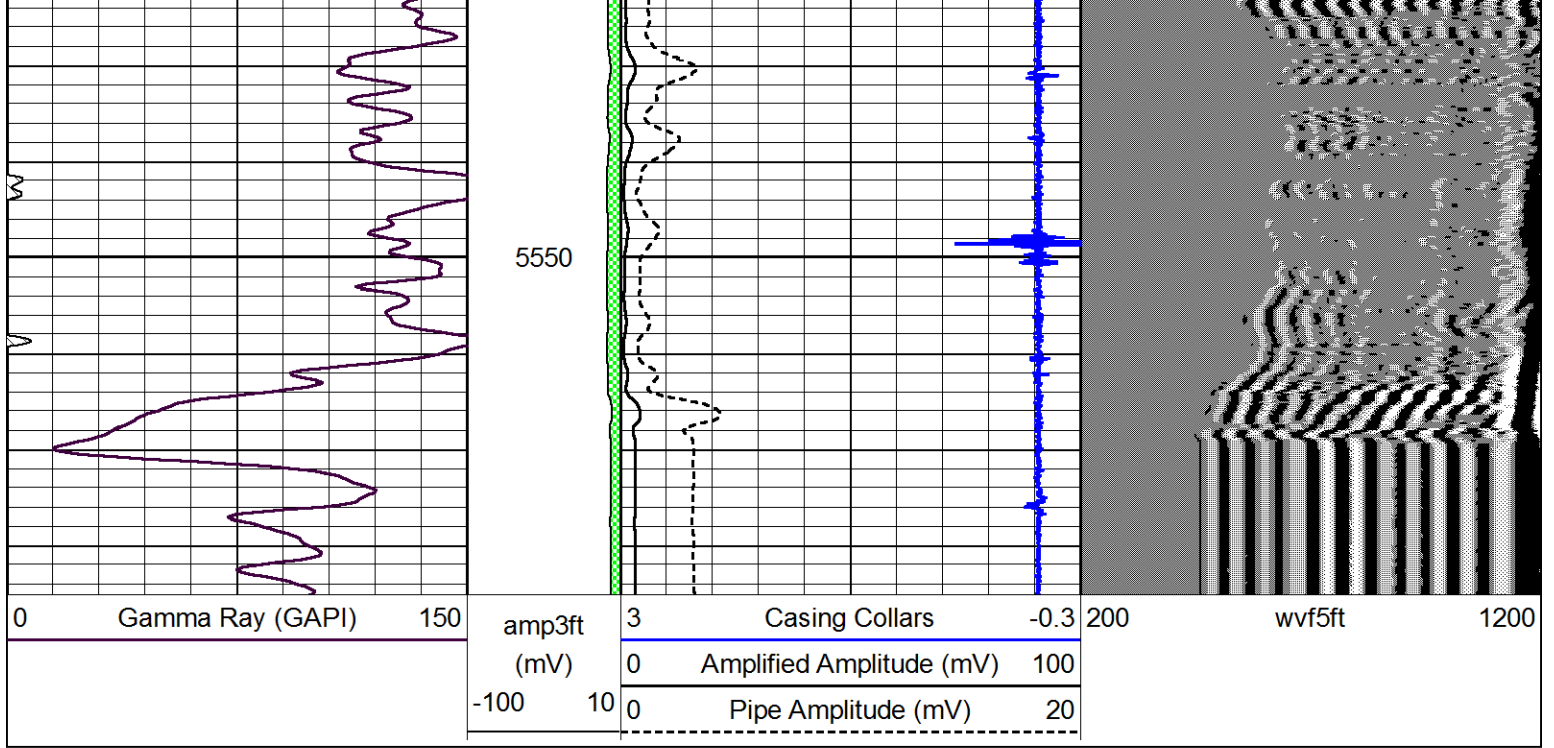




Repeat Section

Database File chieftain_molz_23.db
 Dataset Pathname grcbl/pass3
 Presentation Format cbldr
 Dataset Creation Tue Nov 26 08:42:14 2013
 Charted by Depth in Feet scaled 1:240





5550

200

wvf5ft

1200