



Weatherford

CEMENT BOND LOG

COMPANY TAOS RESOURCES
WELLWEST MADDIX UNIT
NO. 19
FIELD MADDIX NORTH
CNTY COWLEY STATE KS

COMPANY TAOS RESOURCES OPERATING CO.,
WELL WEST MADDIX UNIT #19
FIELD NORTH MADDIX
COUNTY COWLEY STATE KANSAS

LOCATION:
495' FSL & 2145' FWL
C SE SE SW
SEC. 2 TWP. 33S RGE. 5E
OTHER SERVICES:
CRANE
PERF

PERM. DATUM GROUND LEVEL ELEV. 1270
LOG MEASURED FROM 10 FT. ABOVE PERMANENT DATUM ELEV.: K.B. 1280
DRILLING MEASURED FROM KELLY BUSHING D.F. 1278
G.L. 1270

DATE	08 JAN 2014						
RUN NO.	ONE						
DEPTH DRILLER	3650						
DEPTH LOGGER	3606						
BIT. LOG INTERVAL	3601						
TOP LOG INTERVAL	1500						
OPEN HOLE SIZE	7.875"						
TYPE FLUID	WATER						
DENS.	-----						
VISC.	---						
MAX. REC. TEMP. F	108 (OH)						
EST. CEMENT TOP	1725						
TIME WELL READY	1200						
TIME LOGGER ON BIT.	1230						
EQUIP. NO.	14261						
LOCATION	OKC						
RECORDED BY	FRANK MAYERS						
WITNESSED BY	MR. RAY DOROTHY						
BOREHOLE RECORD							
RUN NO.	BIT	FROM	TO	SIZE	WGT.	FROM	TO
TUBING RECORD							
CASING RECORD	SIZE	WT/FT	GRADE	TYPE JOINT	TOP	BOTTOM	
SURFACE STRING	8.625	40		SURF		252	
PROT. STRING							
PROD. STRING	5.5	17		SURF		TD	
LINER							

All interpretations of log data are opinions based on inferences from electrical or other measurements. We do not guarantee the accuracy or correctness of any interpretation or recommendation and we shall not be liable or responsible for any loss, cost, damages or expenses incurred or sustained by anyone resulting from any interpretation or recommendation made by any of our employees or agents.

REMARKS Rig: WEATHERFORD CRANE 15038 Service Order # 208038

FLUID LEVEL AT SURFACE BHT 108 °F

ADDED 6FT TO CORRELATE TO WFD INDUCTION LOG DATED 29 DEC 2013

LOGGED WITH 0 PSI AT SURFACE

PERFORATED 3370-3380, 3340-3360, 3310-3330 1 SPF Prints: X

EQUIPMENT DATA				
Bit Size	Run No.	Tool Type	Tool No.	Other
Well Status	ONE	CCL/TELE	CTBA251	
Surface Pressure		GAMMA RAY	GRBA181	
Shut In	Flowing	CENTRALIZER	CENB142	
		BOND	SBTA170	
		CENTRALIZER	CENA197	

REMARKS

LOGGED WITH 0 PSI AT SURFACE

DEPTH SCALE: 5":100'

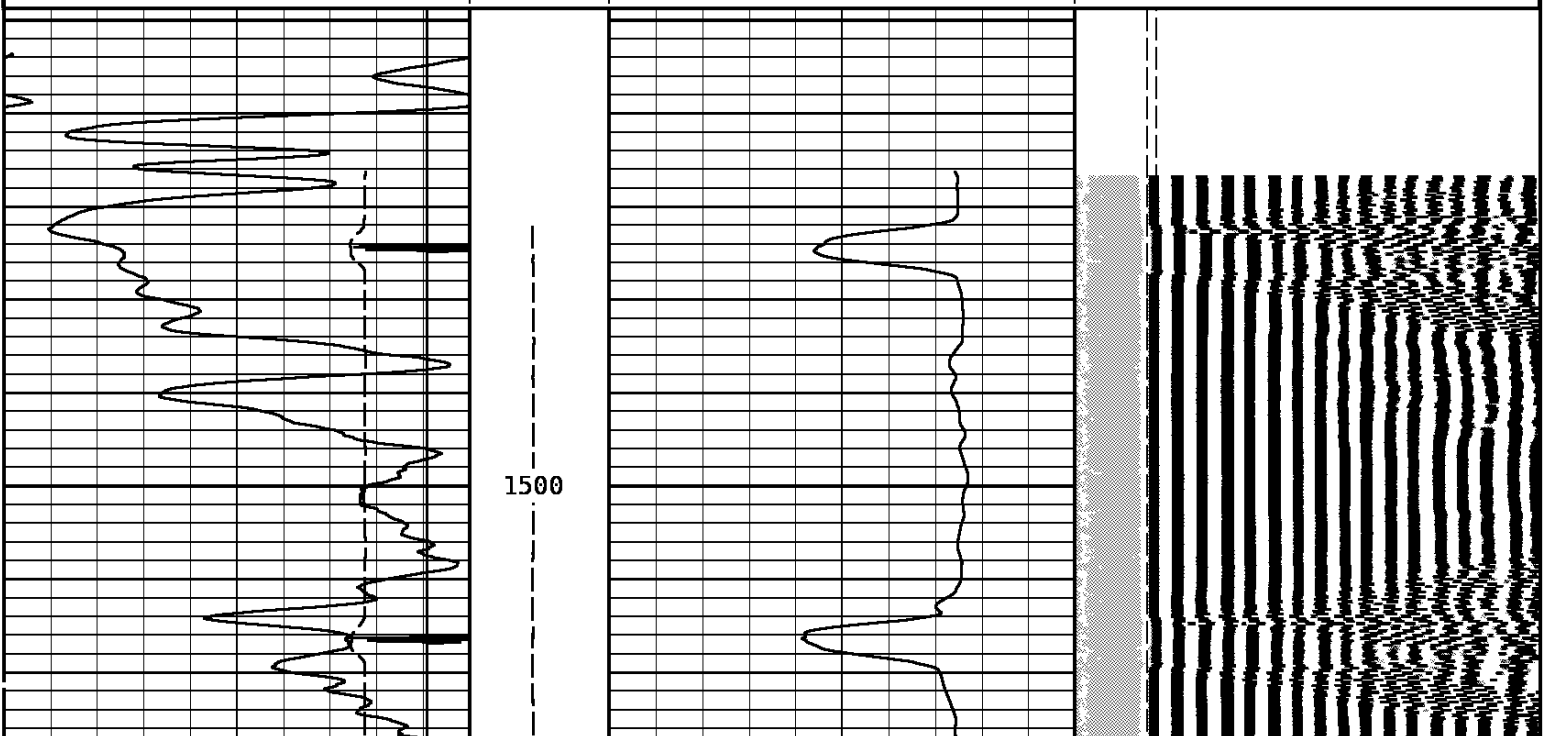
PROCESSED VERSION: 2012.07.18.162"

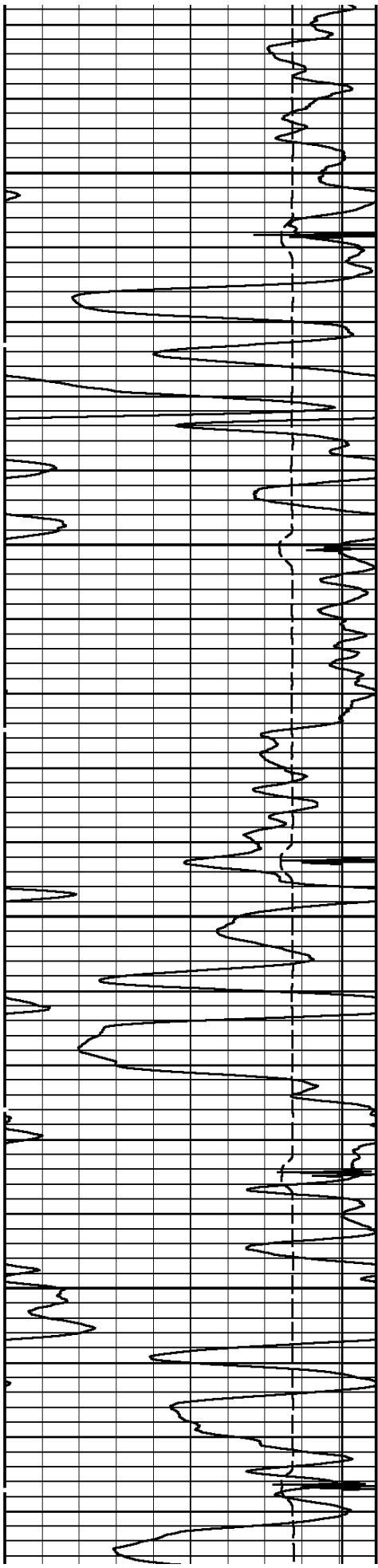
MAIN PASS

208038 sbt2

FINISH DEPTH: 1471.8 Feet DIRECTION: UP DATE: 01/08/2014 TIME: 12:17 MODE: ORIGINAL
 RECOMPUTED DATE: 01/08/2014 TIME: 12:26

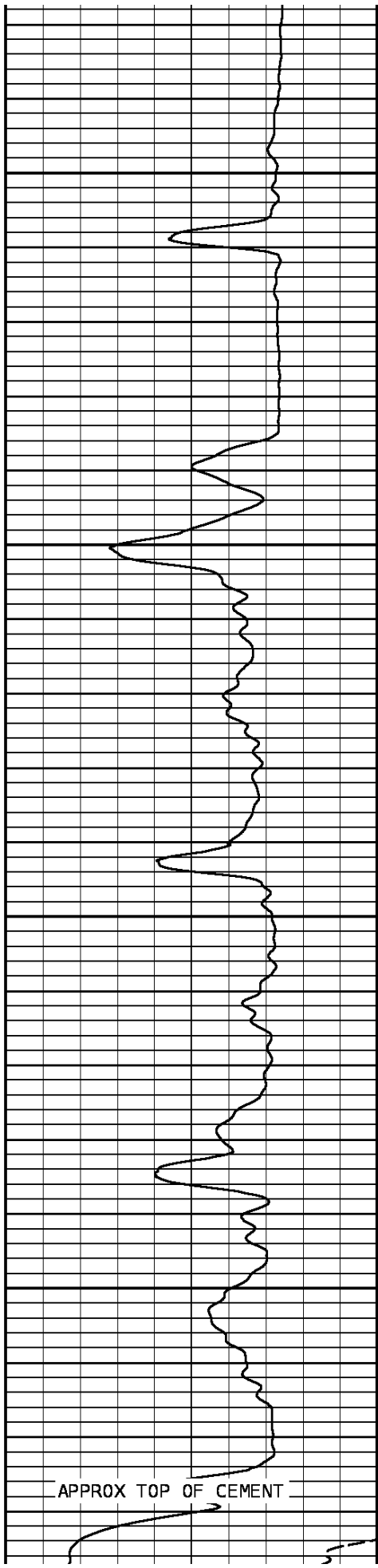
Collar Locator							
-3000	Millivolts	300					
Gamma Ray				AMPLITUDE 3FTX5			
0	API	150	0	Millivolts	20		
TRAVEL TIME 3FT				AMPLITUDE 3FT		VARIABLE DENSITY 5FT	
400	Microseconds	200	0	1000	0	100	200
				Millivolts			Microseconds
							1200



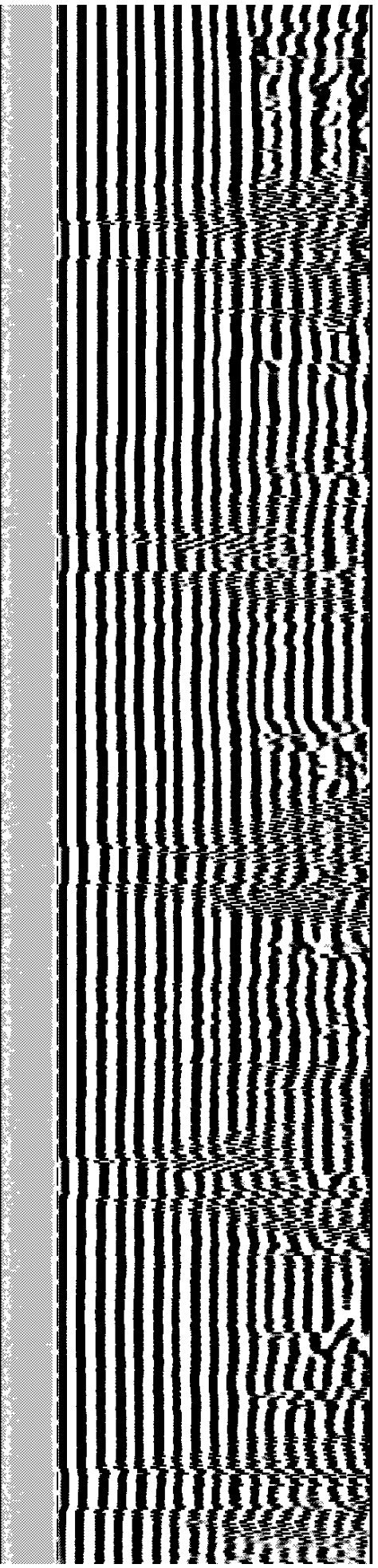


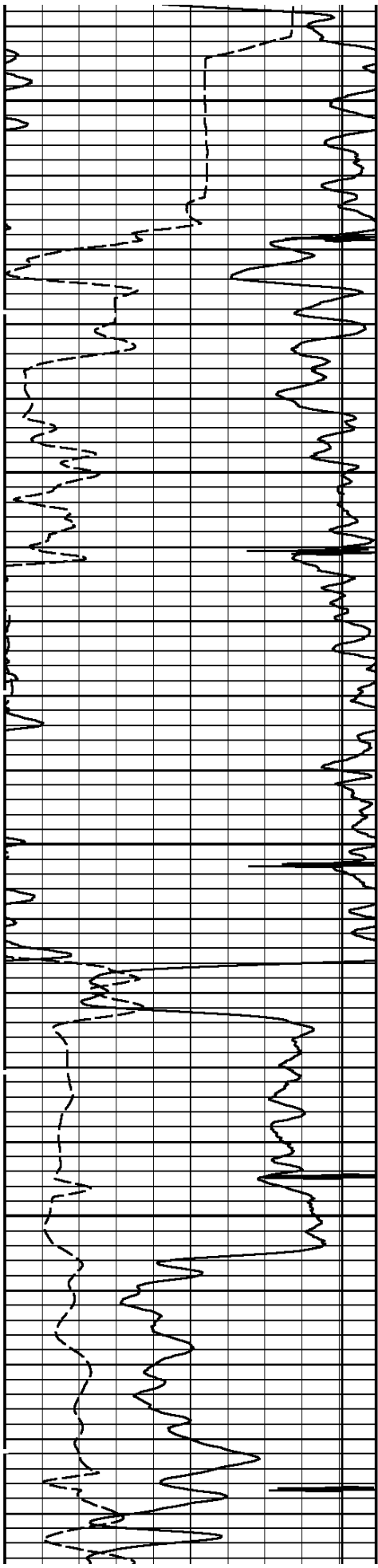
1600

1700



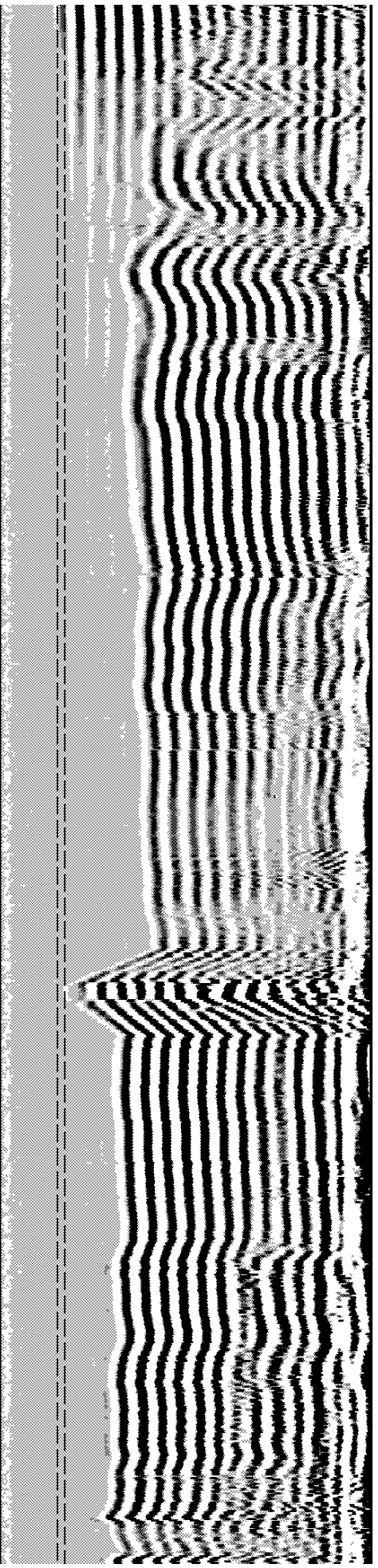
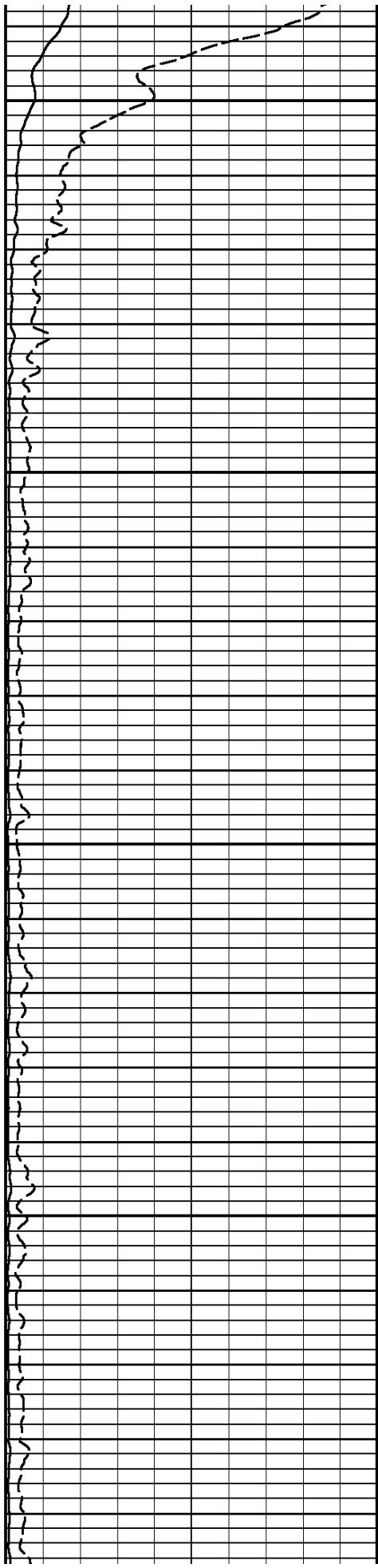
APPROX TOP OF CEMENT

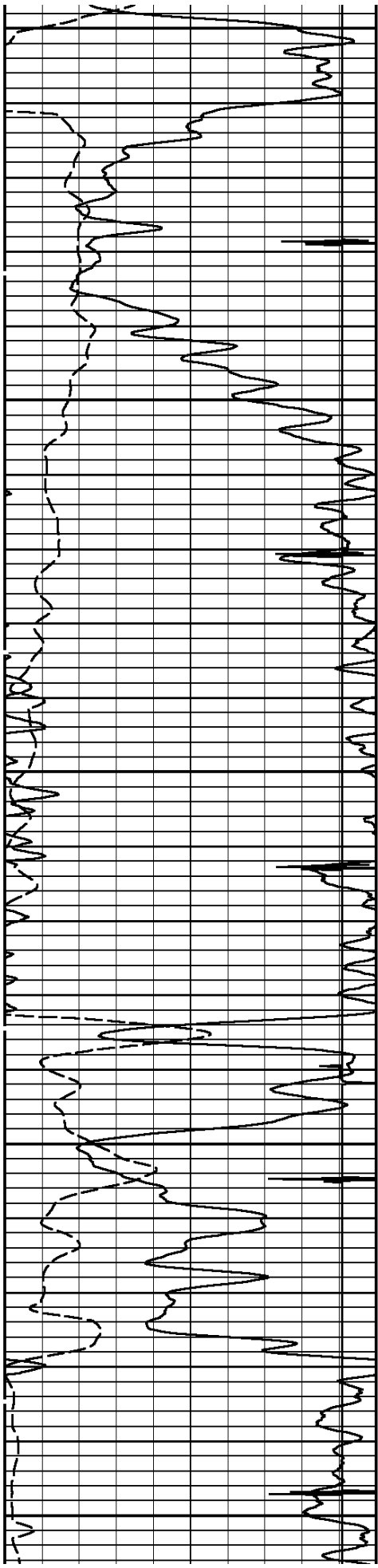




1800

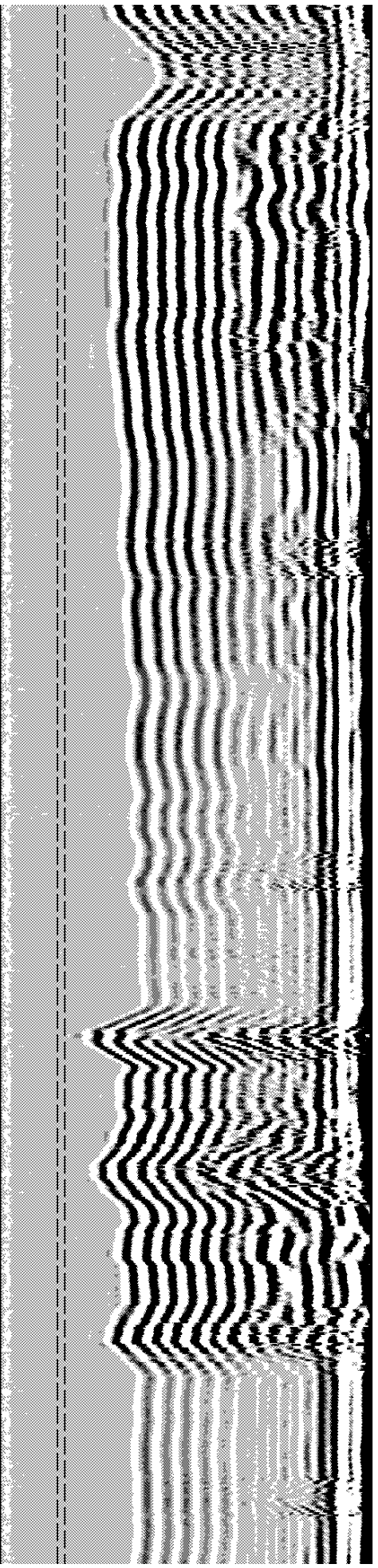
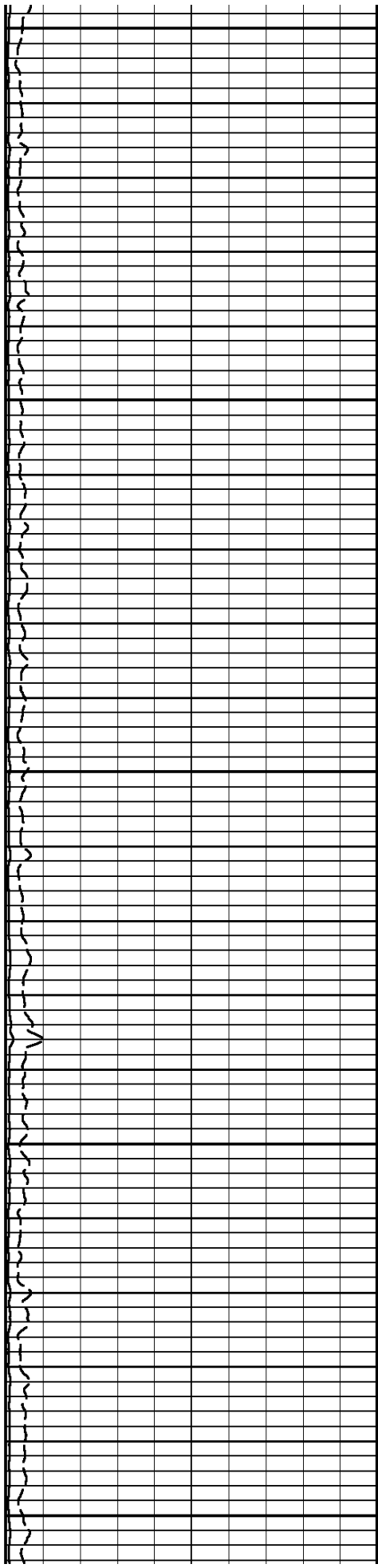
1900

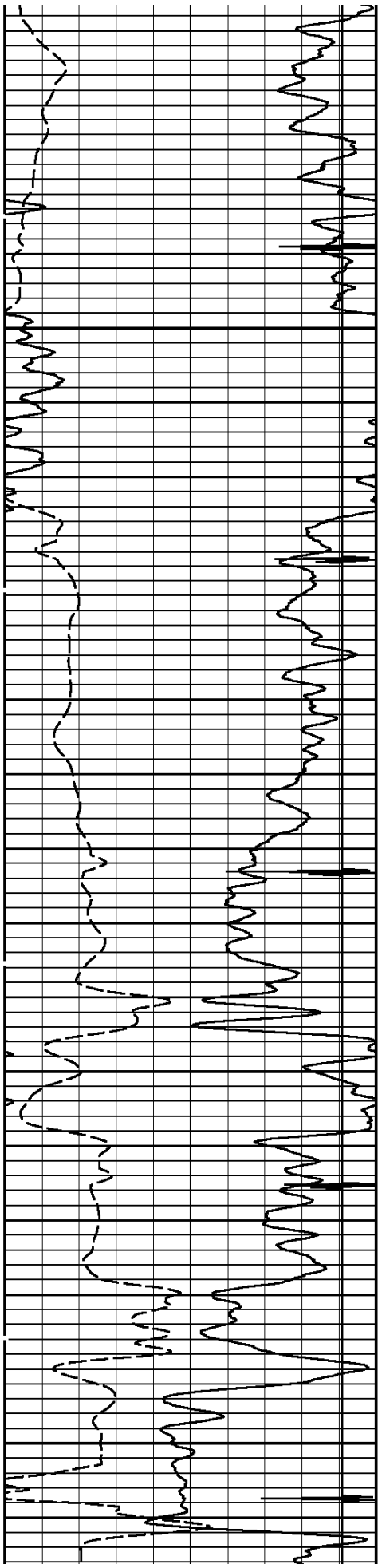




2000

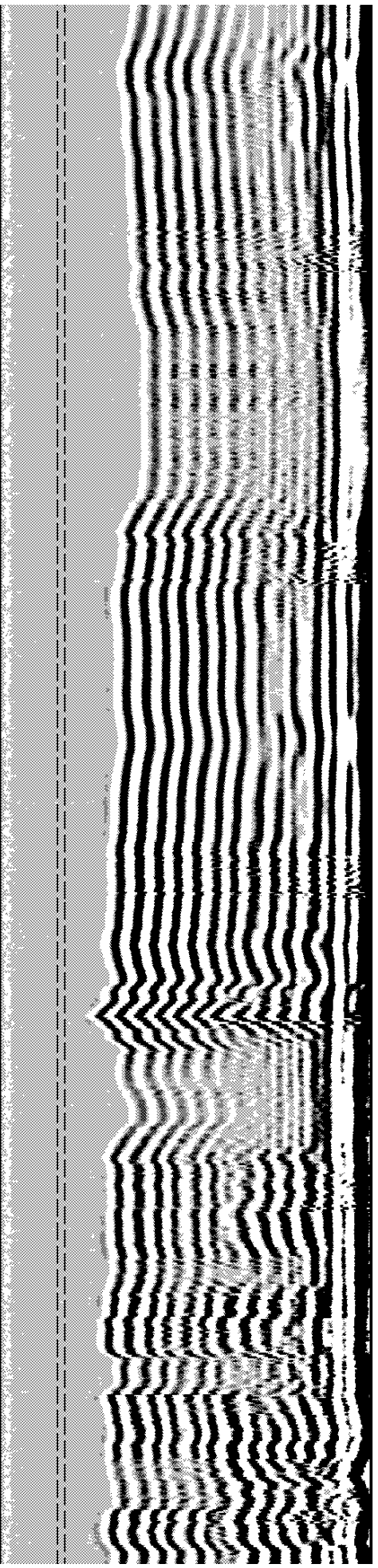
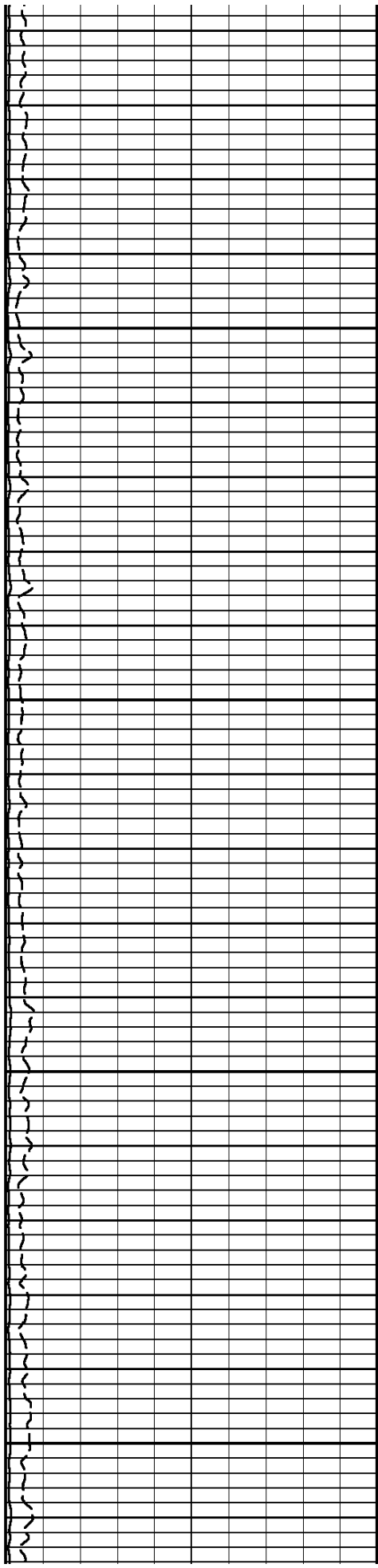
2100

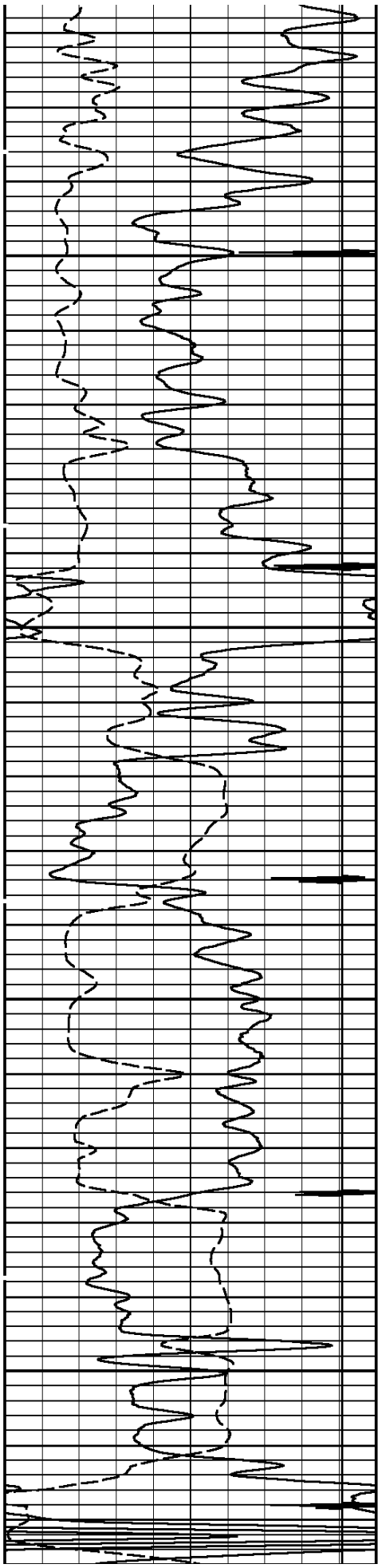




2200

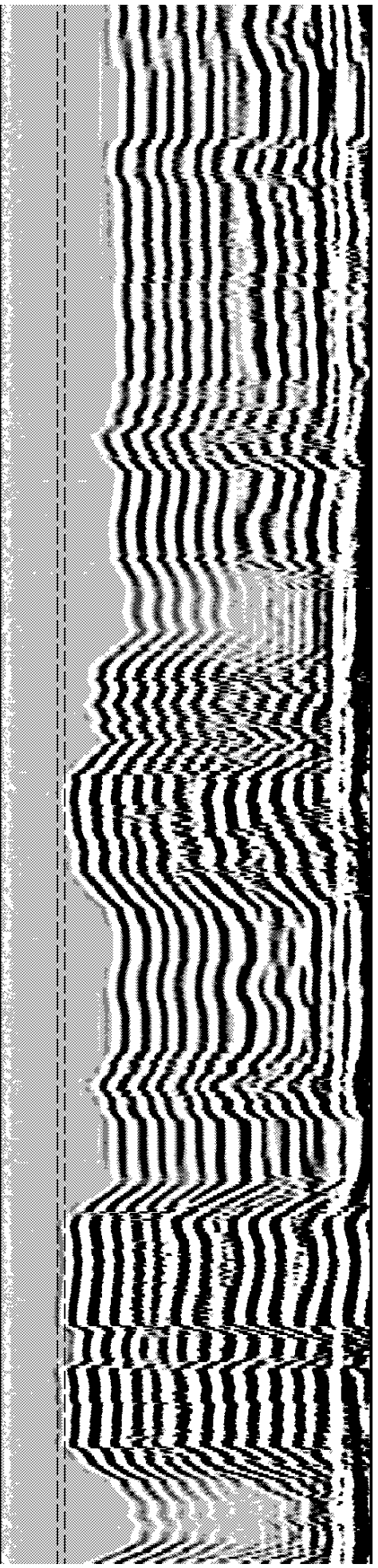
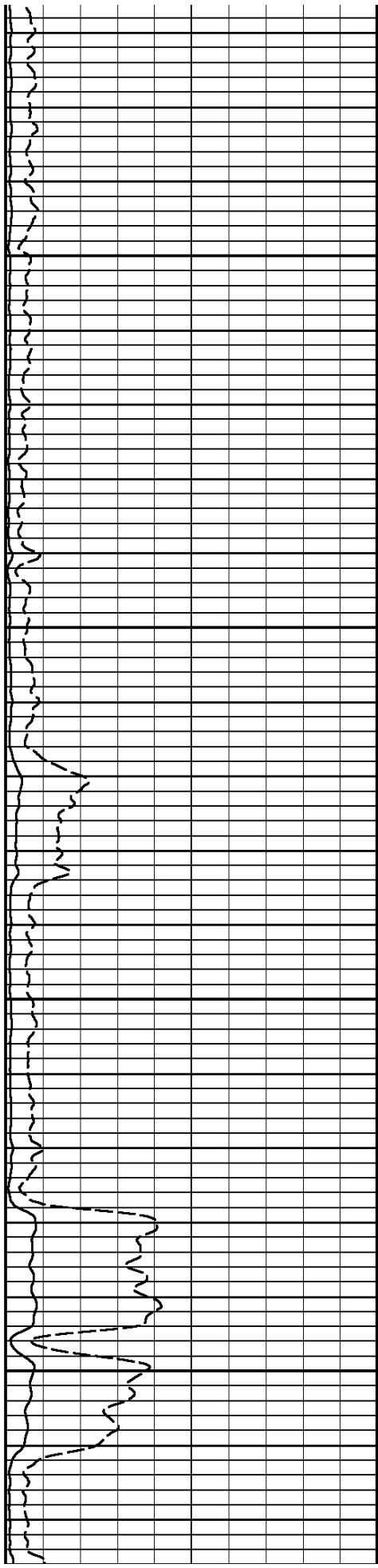
2300

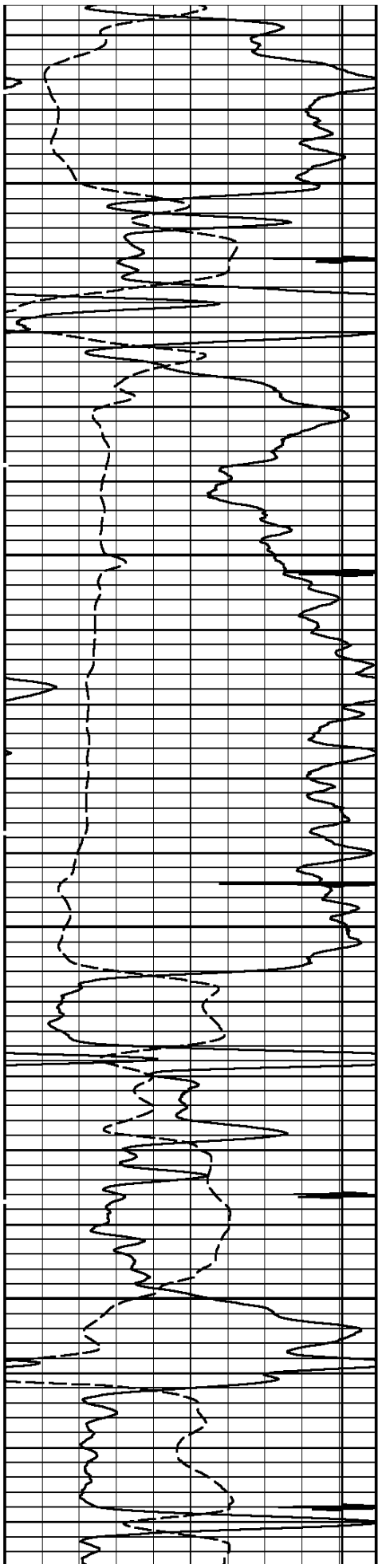




2400

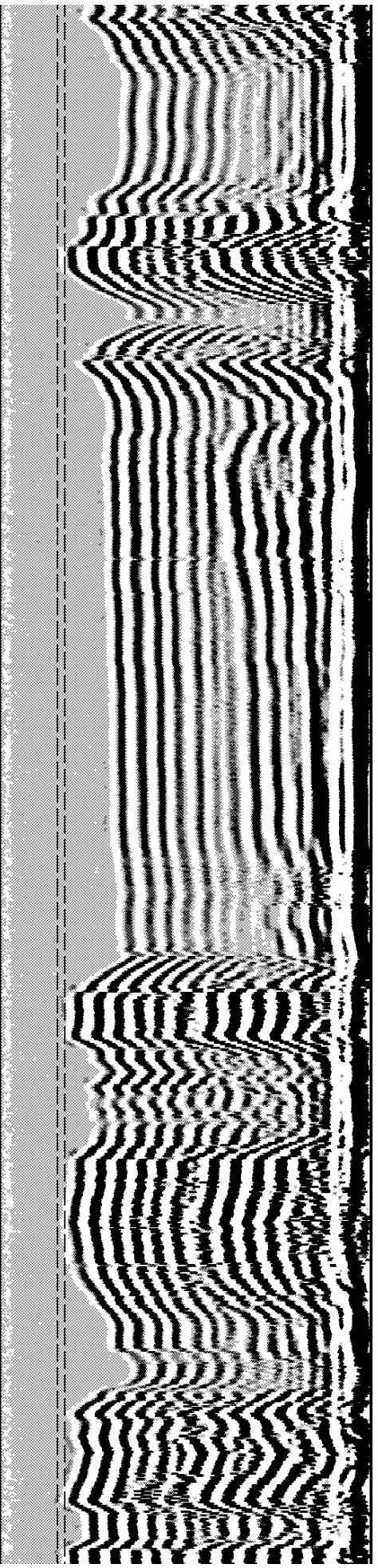
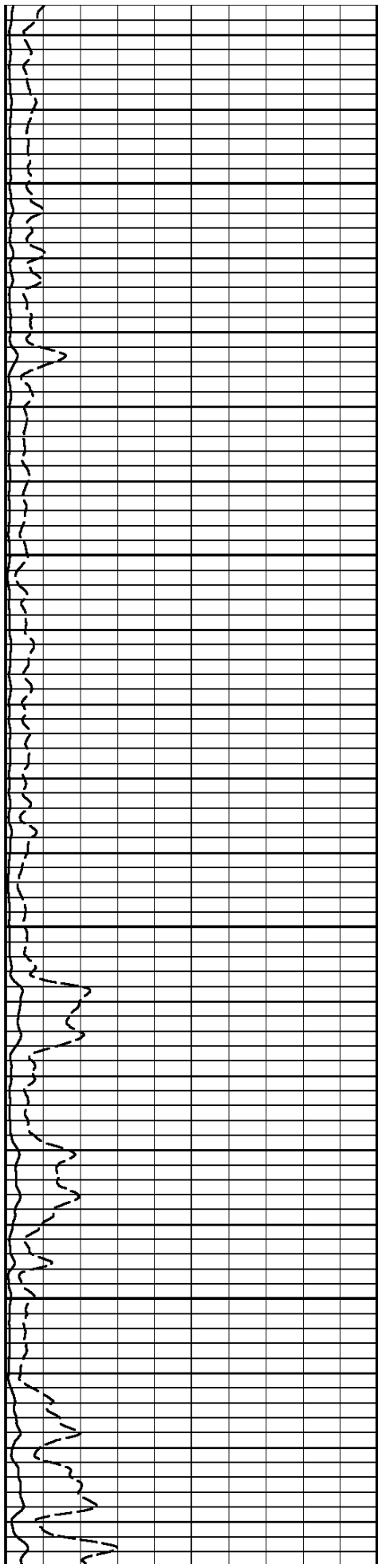
2500

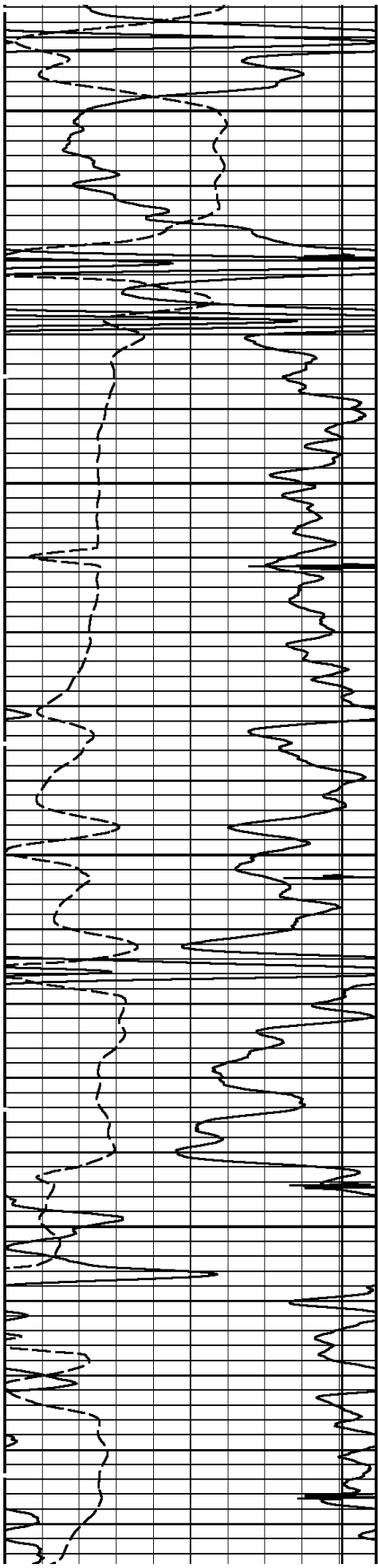




2600

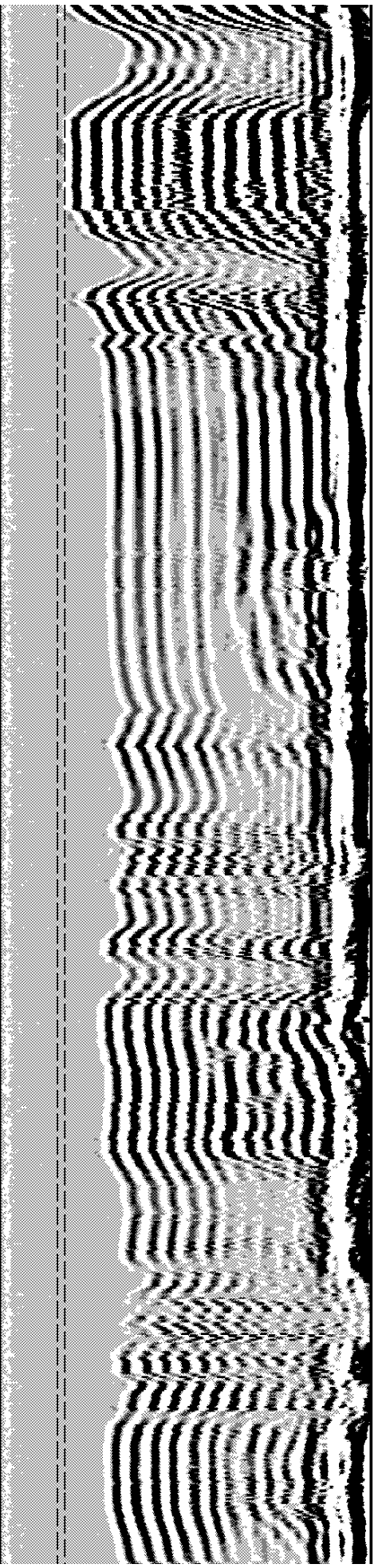
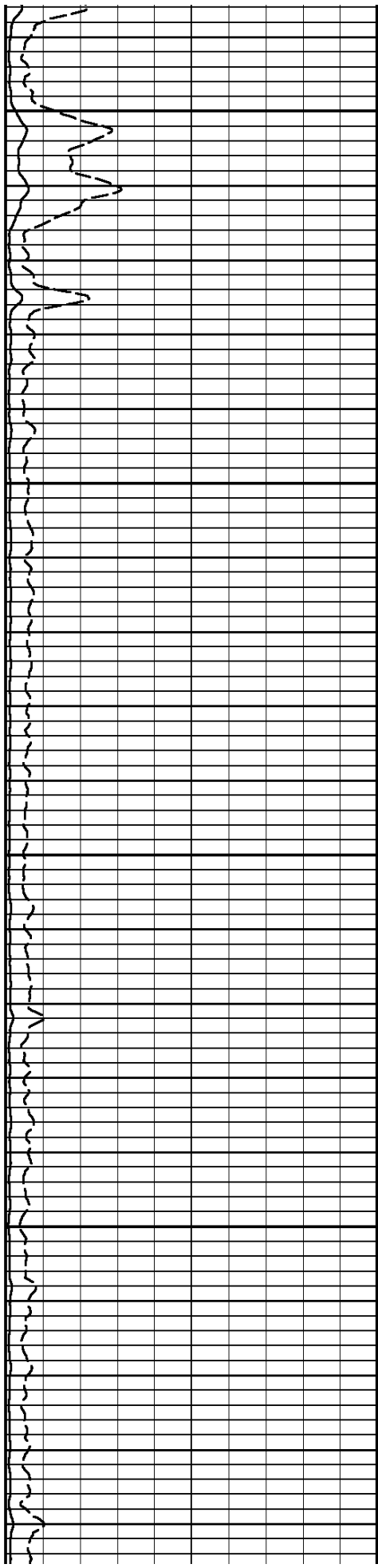
2700

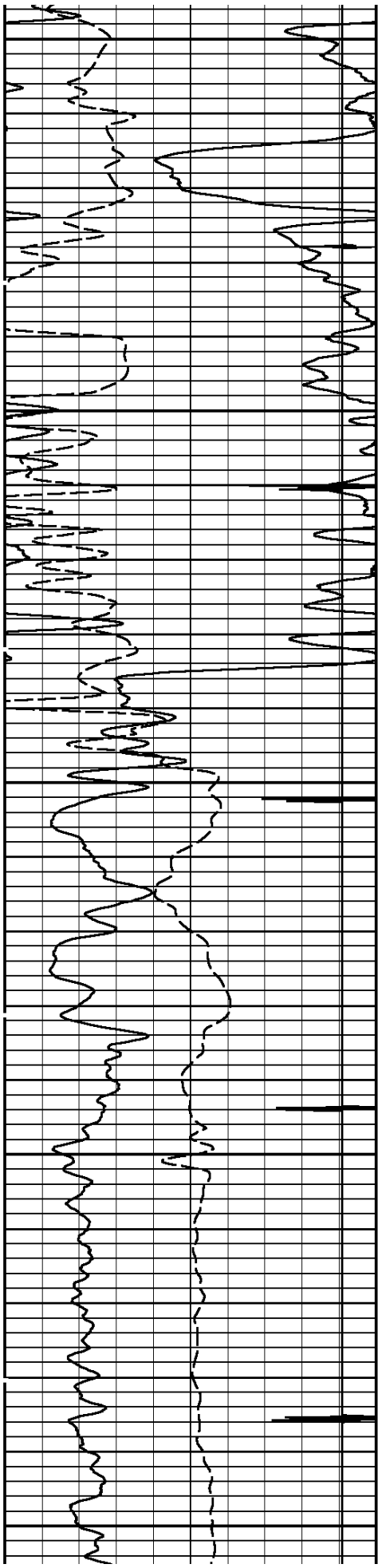




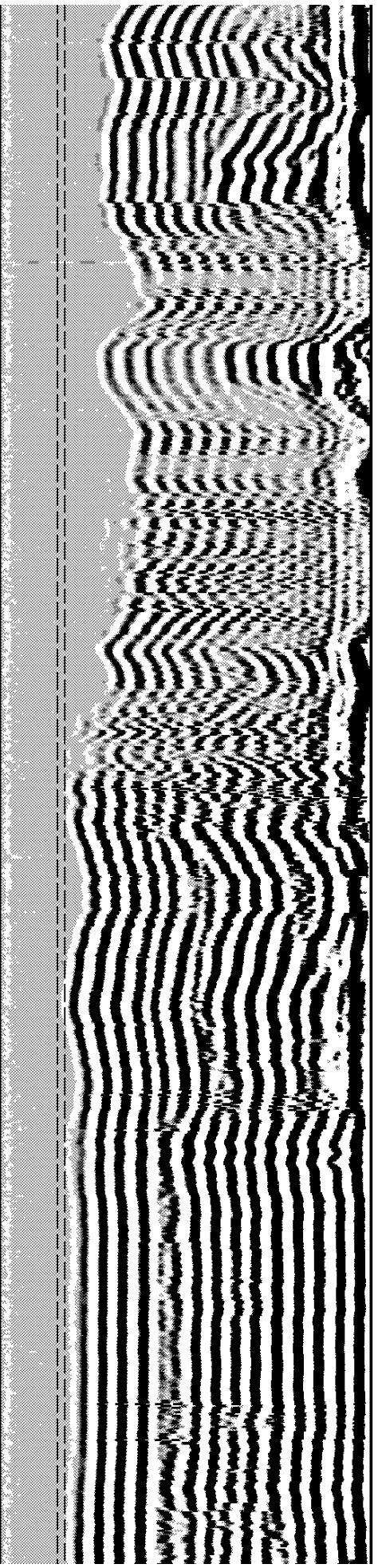
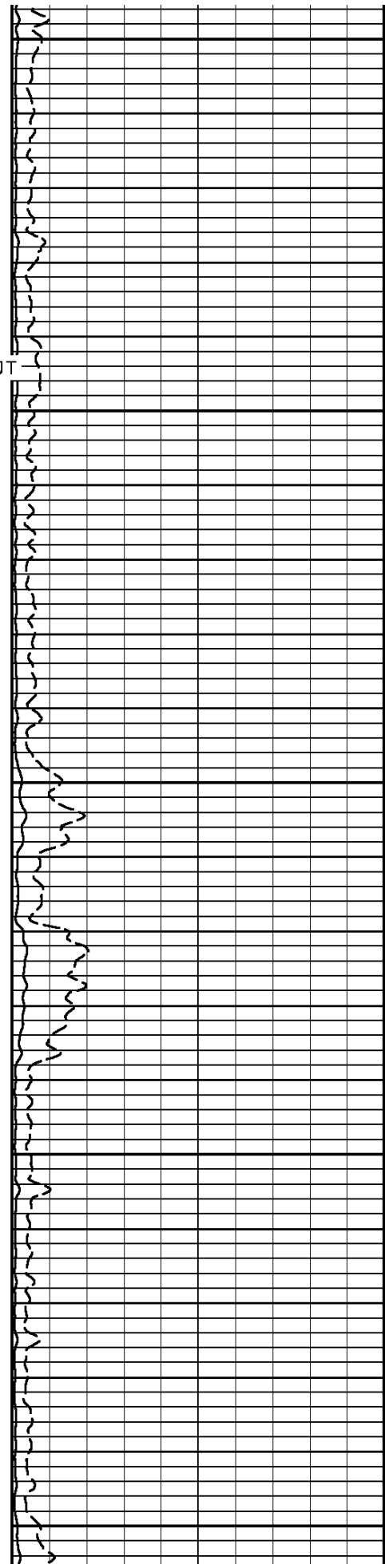
2800

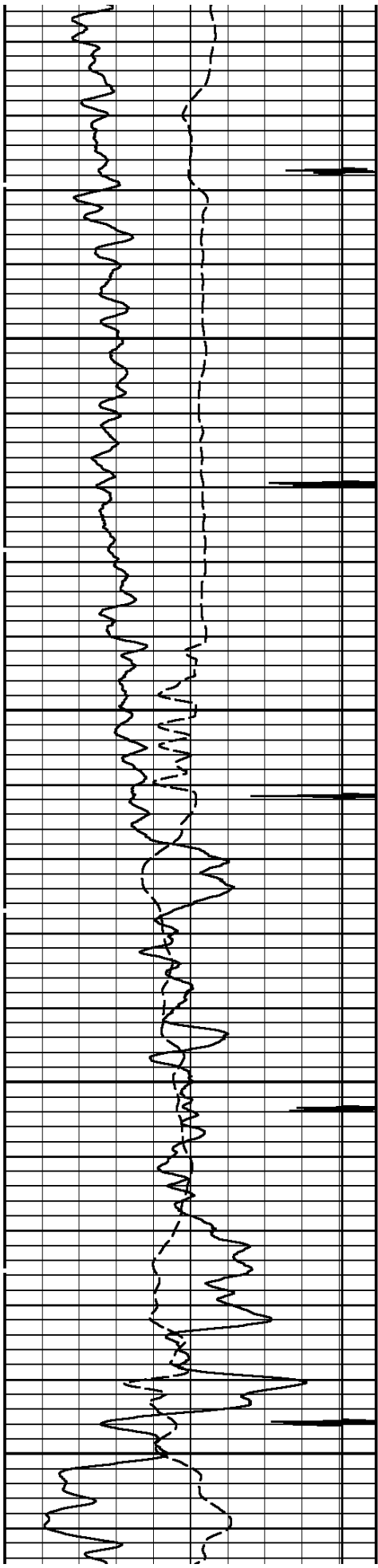
2900





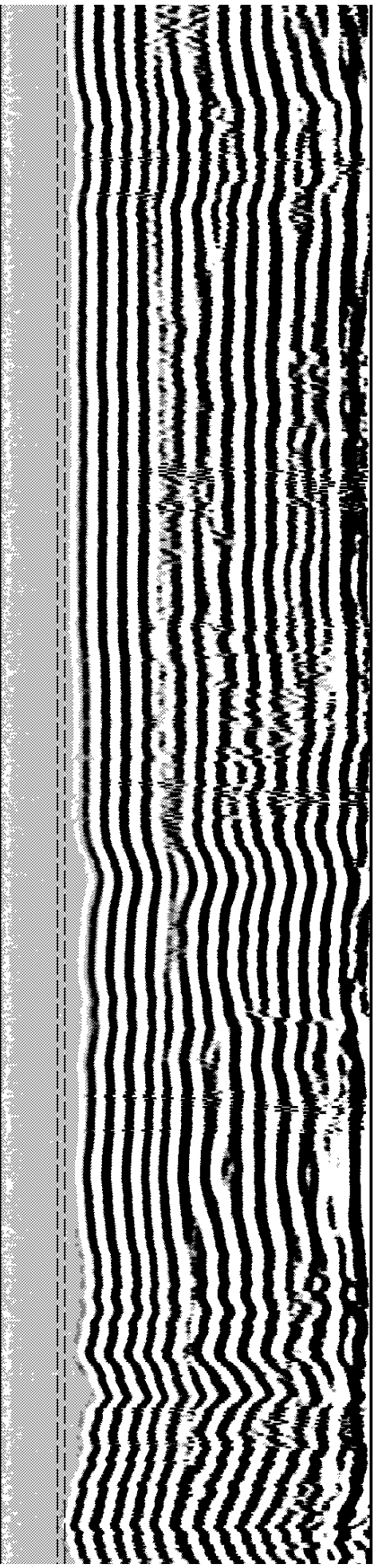
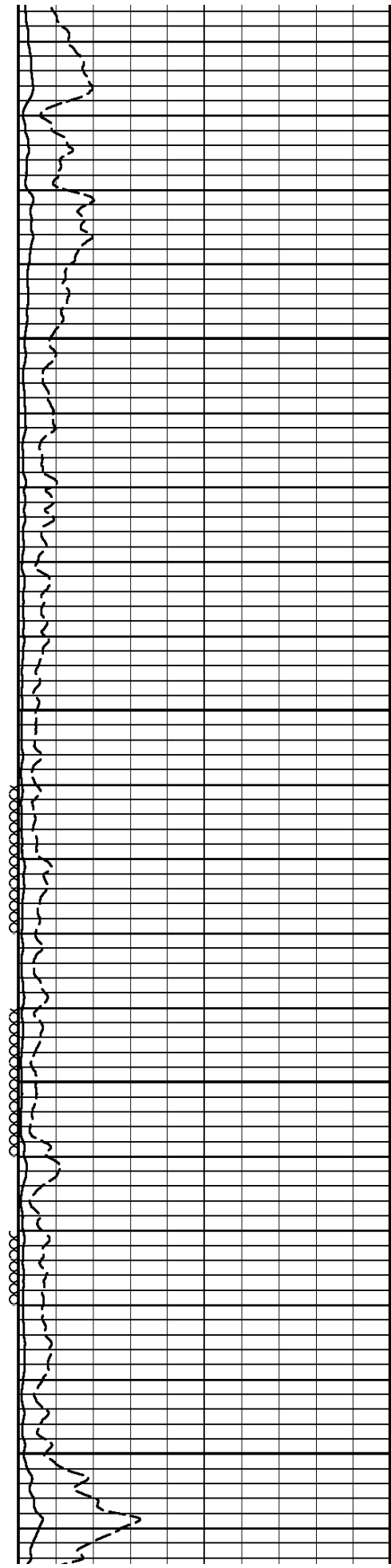
3000
MARKER JT
3100
3200

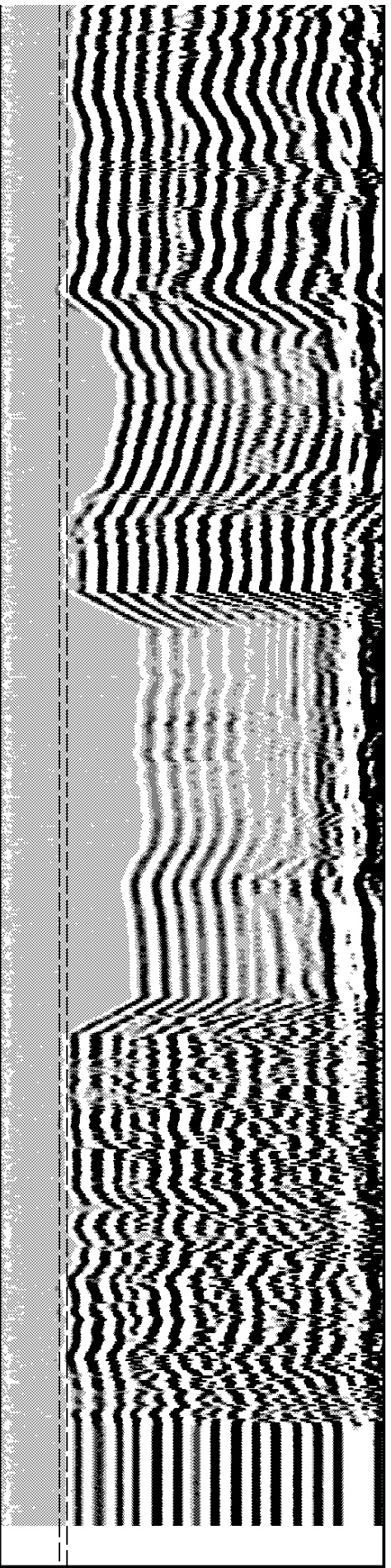
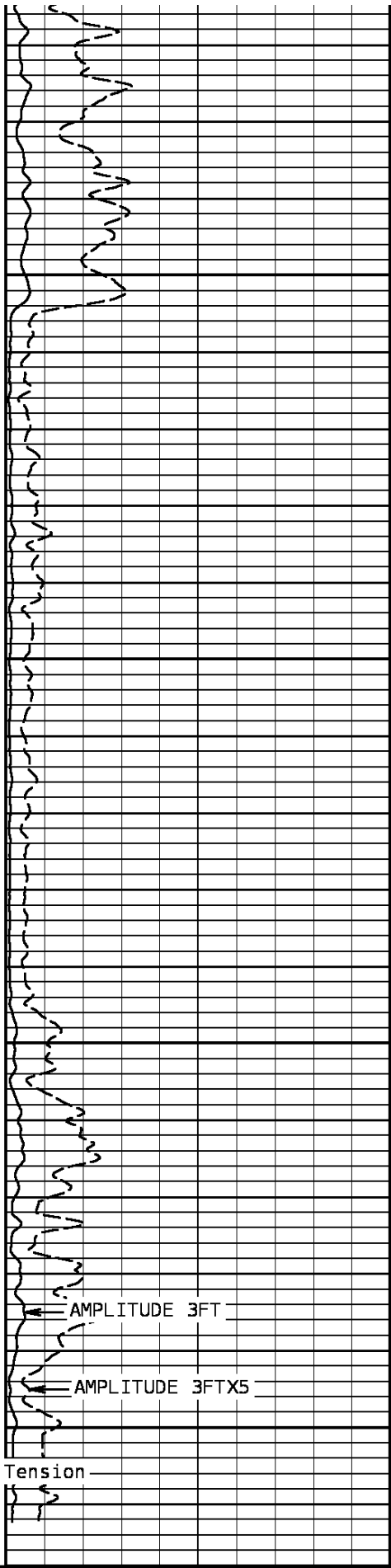
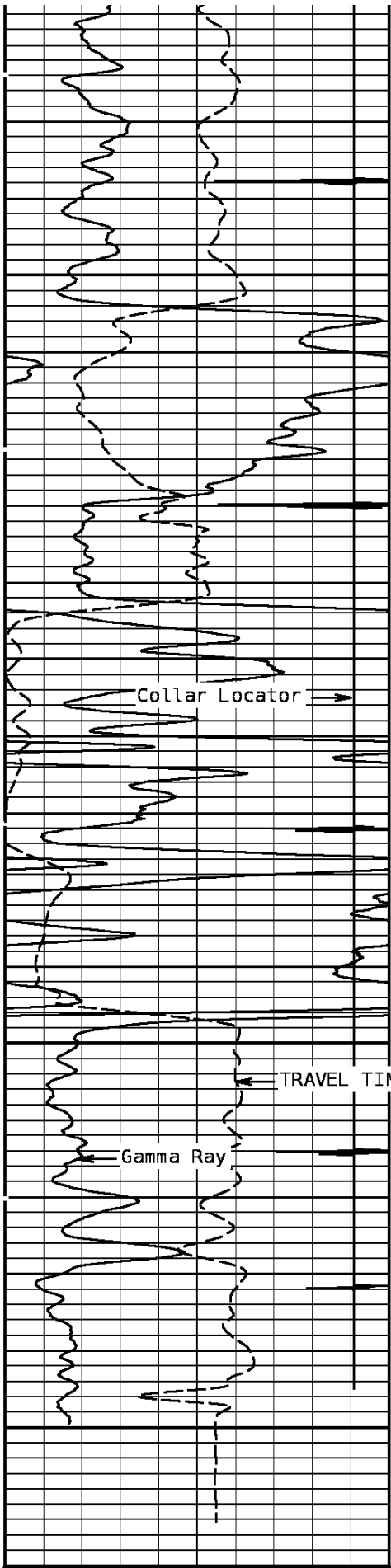




3300

3400





TRAVFI TTMF 3FT

Tension

AMPLITUDE 3FT

VARIABLE DENSITY 5FT

Collar Locator

Gamma Ray

TRAVEL TIME 3FT

AMPLITUDE 3FT

AMPLITUDE 3FTX5

Tension

3500

3600

400	Microseconds	200	0	1000	0	Millivolts	100	200	Microseconds	1200	
Gamma Ray			AMPLITUDE 3FTX5								
0	API	150			0	Millivolts	20				
Collar Locator											
-3000	Millivolts	300									

START DEPTH: **3617.8** DIRECTION: **UP** DATE: **01/08/2014** TIME: **11:34** MODE: **ORIGINAL**
 RECOMPUTED DATE: **01/08/2014** TIME: **12:25**

208038 sbt2

MAIN PASS

DEPTH SCALE: **5":100'**

LOGGED VERSION: **2012.07.18.162"**

REMARKS

LOGGED WITH 0 PSI AT SURFACE

DEPTH SCALE: **5":100'**

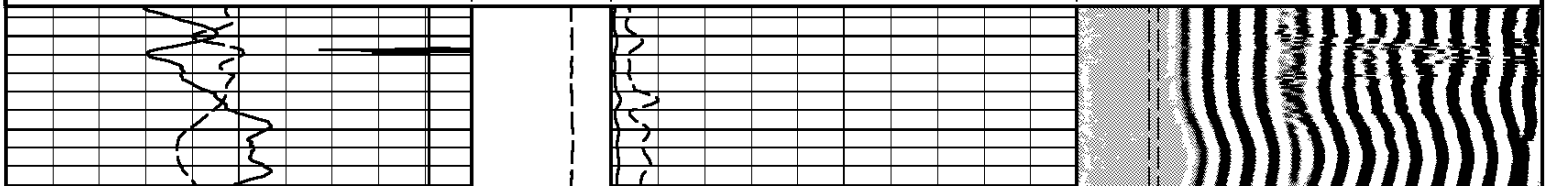
PROCESSED VERSION: **2012.07.18.162"**

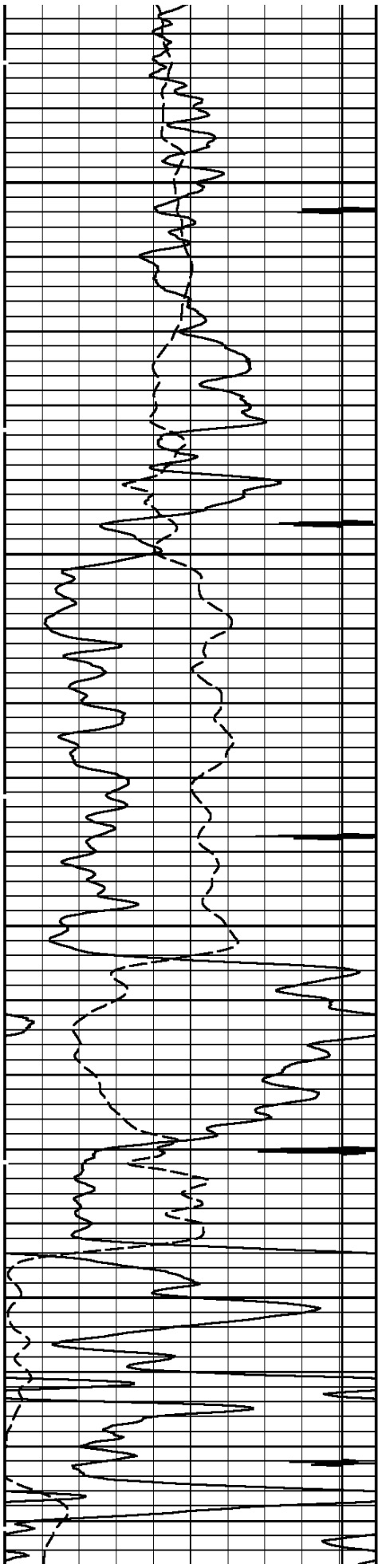
REPEAT PASS

208038 sbt1

FINISH DEPTH: **3295.7** Feet DIRECTION: **UP** DATE: **01/08/2014** TIME: **11:30** MODE: **ORIGINAL**
 RECOMPUTED DATE: **01/08/2014** TIME: **12:19**

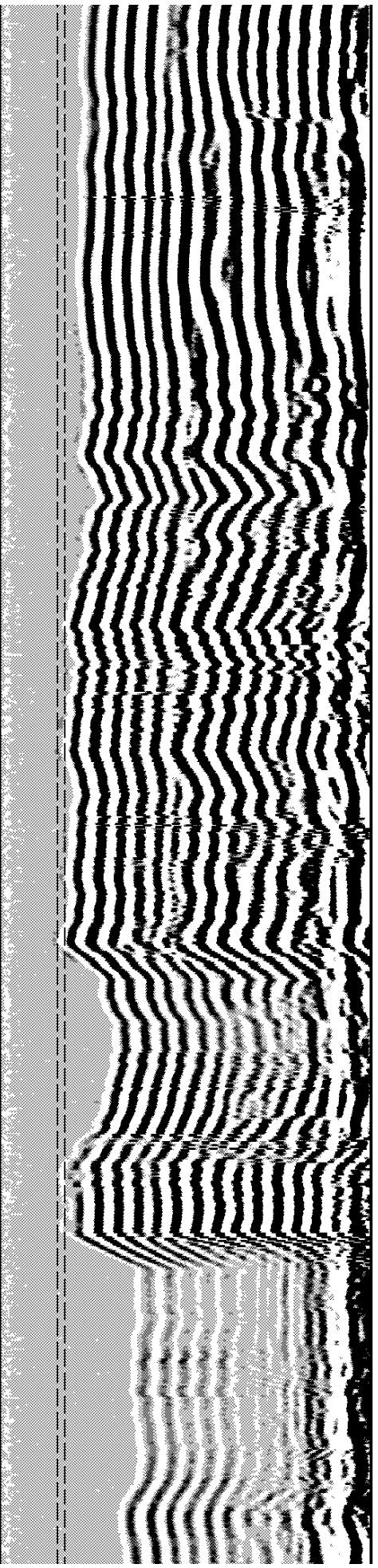
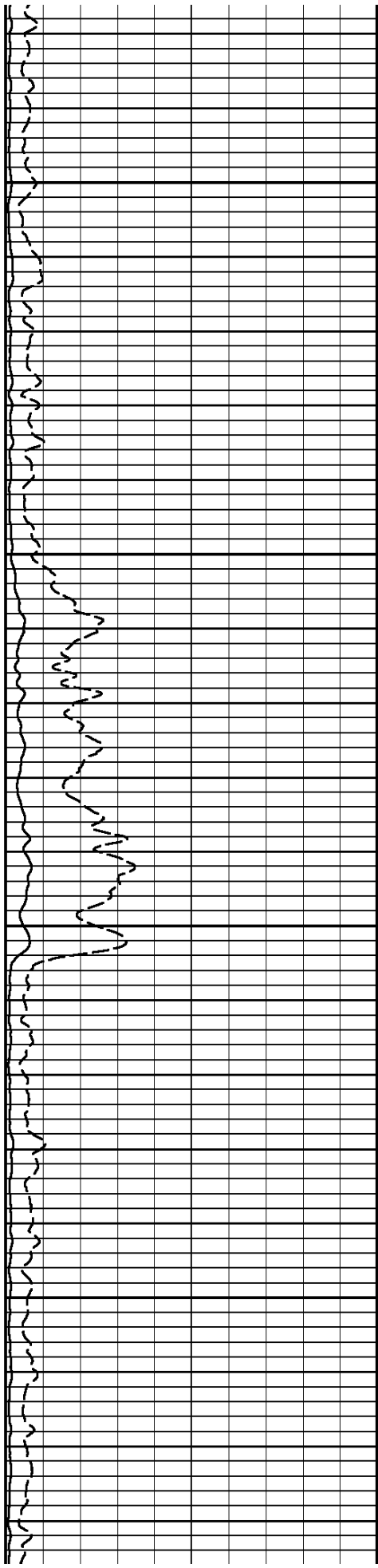
Collar Locator			AMPLITUDE 3FTX5								
-3000	Millivolts	300			0	Millivolts	20				
Gamma Ray											
0	API	150			0	Millivolts	20				
TRAVEL TIME 3FT			Tension		AMPLITUDE 3FT			VARIABLE DENSITY 5FT			
400	Microseconds	200	0	1000	0	Millivolts	100	200	Microseconds	1200	

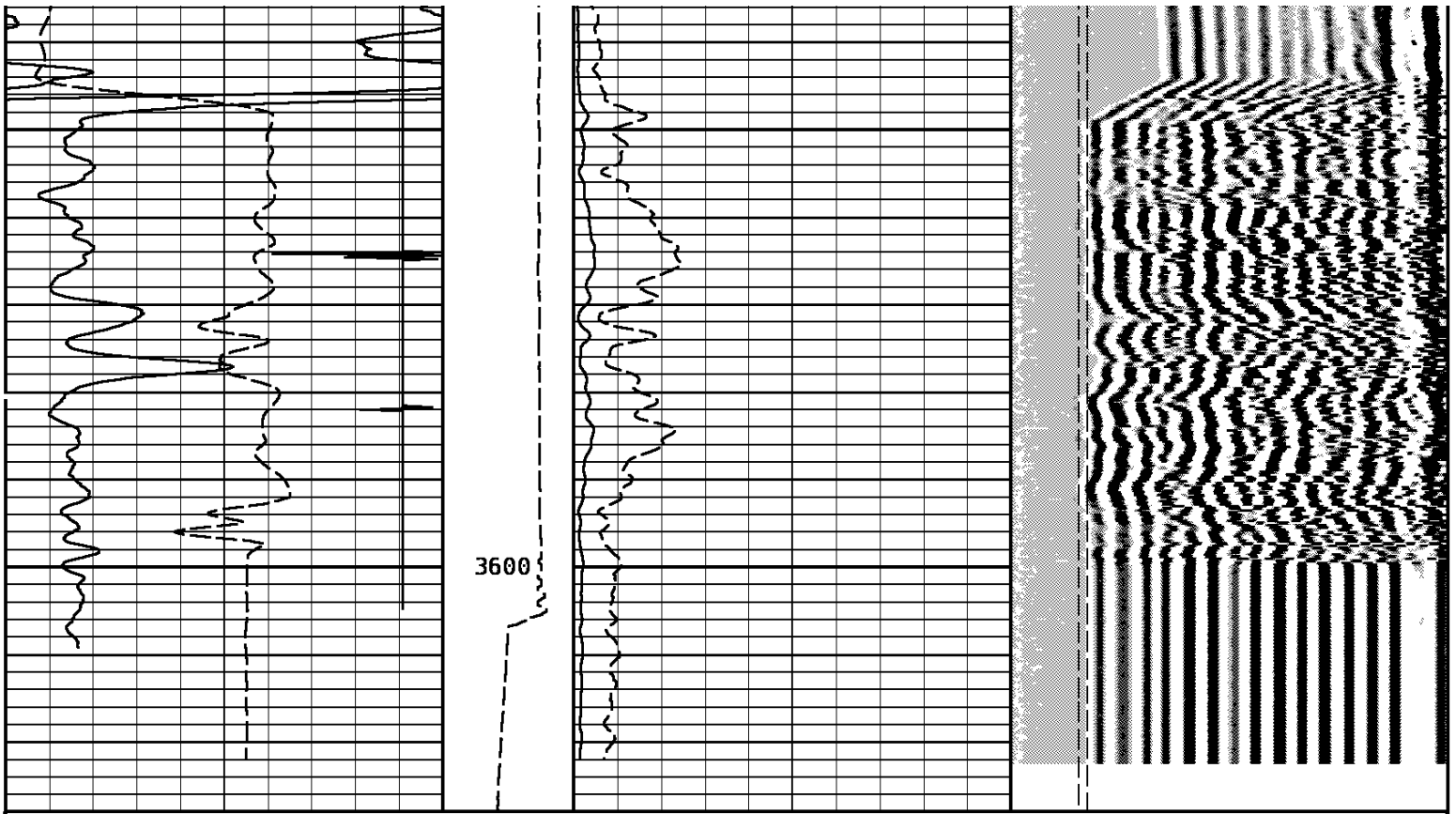




3400

3500





TRAVEL TIME 3FT	Tension	AMPLITUDE 3FT	VARIABLE DENSITY 5FT
400 Microseconds 200	0 1000	0 Millivolts 100	200 Microseconds 1200
Gamma Ray		AMPLITUDE 3FTX5	
0 API 150		0 Millivolts 20	
Collar Locator			
-3000 Millivolts 300			

START DEPTH: **3628.0** DIRECTION: **UP** DATE: **01/08/2014** TIME: **11:23** MODE: **ORIGINAL**
 RECOMPUTED DATE: **01/08/2014** TIME: **12:19**

208038 sbt1

REPEAT PASS

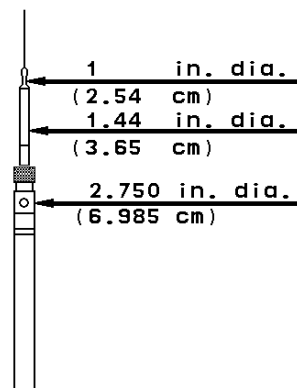
DEPTH SCALE: **5":100'** LOGGED VERSION: **2012.07.18.162"**

Sector Bond Before Calibration

Tool Type	SBT-AA	Serial No	sbtfm
Sensor	Description	Standard	Measured
AMP 3FT	ZERO	1.00	8.69
	PLUS	72.00	1064.95
AMP 5FT	ZERO	1.00	13.67
	PLUS	72.00	1251.29
1 SECTOR AMP	ZERO	1.00	55.46
	PLUS	95.00	530.54
2 SECTOR AMP	ZERO	1.00	68.89
	PLUS	95.00	594.95
3 SECTOR AMP	ZERO	1.00	37.31
	PLUS	95.00	617.78
4 SECTOR AMP	ZERO	1.00	28.69
	PLUS	95.00	592.77
5 SECTOR AMP	ZERO	1.00	42.74
	PLUS	95.00	621.85
6 SECTOR AMP	ZERO	1.00	77.28
	PLUS	95.00	660.96
7 SECTOR AMP	ZERO	1.00	19.79
	PLUS	95.00	632.29
8 SECTOR AMP	ZERO	1.00	60.79
	PLUS	95.00	560.25

1 7/16" Cablehead

Weight 2.2 LB
 Length 1.0 FT
 Max. Diameter 1.44 IN
 Total Stack Weight 219.2 LB in air
 Total Stack Length 24.01FT



Collar Locator

Weight 39.8 lb
 Length 3.40 ft
 Max. Diameter 2.7 in

Slim Hole Gamma Ray

Weight 39.8 lb
 Length 4.71 ft
 Max. Diameter 2.7 in

Slim Hole Centralizer

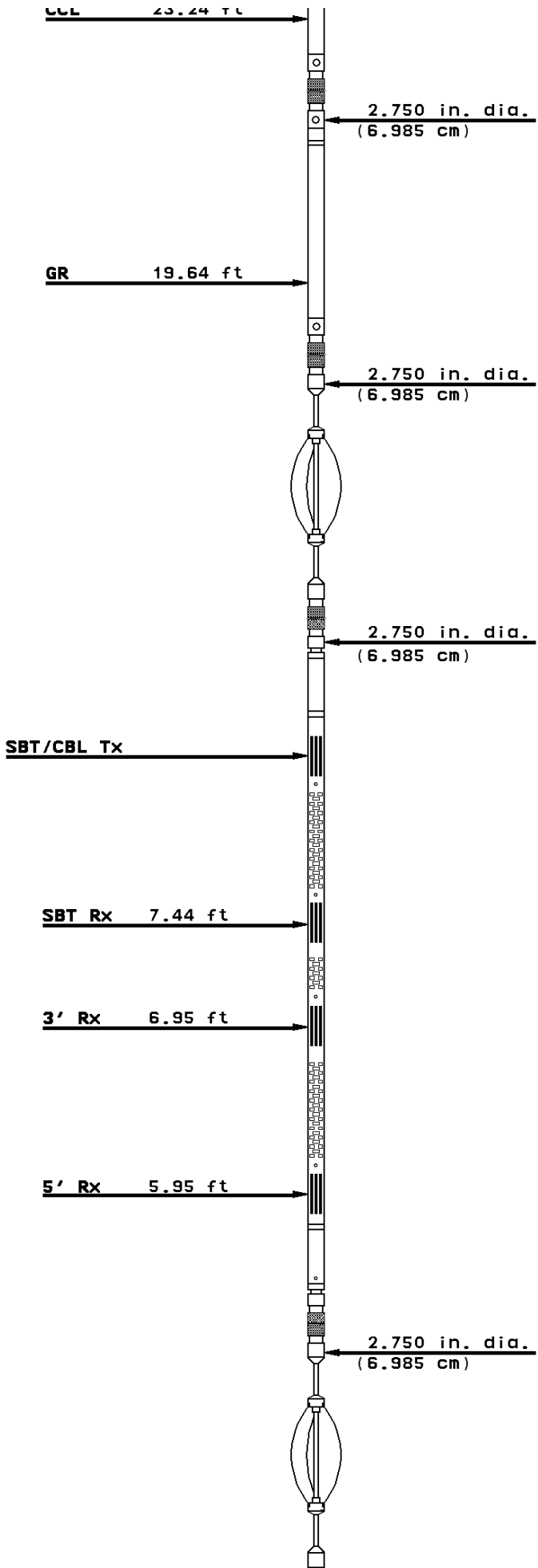
Weight 23.8 lb
 Length 3.08 ft
 Max. Diameter 2.7 in

Sector Bond

Weight 89.8 lb
 Length 10.32 ft
 Max. Diameter 2.7 in

Slim Hole Centralizer

Weight 11.9 lb
 Length 2.49 ft
 Max. Diameter 2.7 in





COMPANY TAOS RESOURCES OPERATING CO.

WELL WEST MADDIX UNIT #19

FIELD NORTH MADDIX

COUNTY COWLEY STATE KANSAS



Weatherford®